

EAST BLOCK CARPET REPLACEMENT

TENDER DOCUMENTS

Heritage Conservation Services

Architecture and Engineering Services
Real Property Branch
Public Services and Procurement Canada

Services de la Conservation du Patrimoine

Services d'Architecture et de Génie
Direction Générale des Biens Immobiliers
Services Publics et Approvisionnement Canada



BUILDING EXTERIOR, WEST FACADE (HCS, 2013)



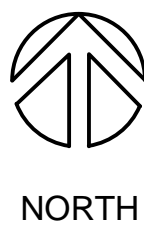
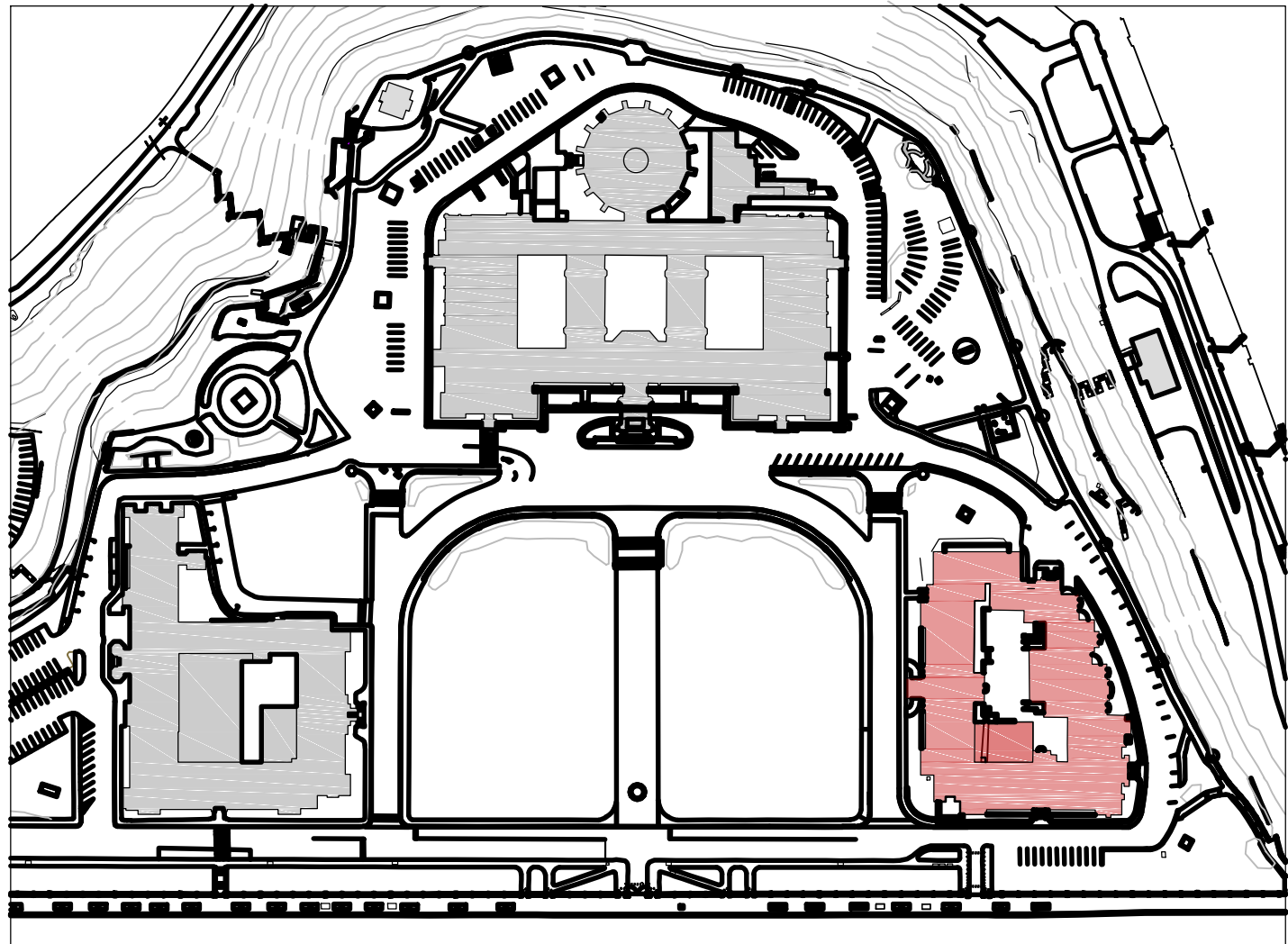
INTERIOR CORRIDOR LOOKING NORTH AT GOVERNOR GENERAL'S LANDING, 2ND FLOOR (HCS, 2017)

INDEX LIST OF DRAWINGS

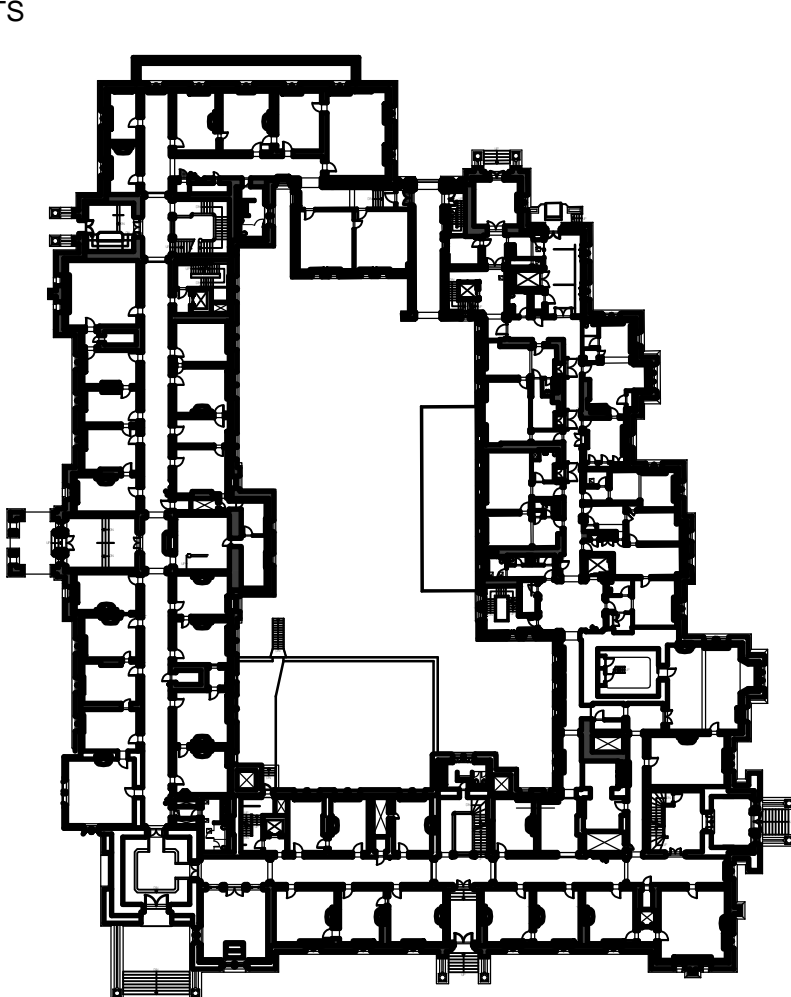
A0 - COVER PAGE

A1 - BASEMENT NEW CARPET PLAN
+ BASEMENT SUBSTRATE PLAN
A2 - MAIN FLOOR NEW CARPET PLAN
+ MAIN FLOOR SUBSTRATE PLAN
A3 - 2ND FLOOR NEW CARPET PLAN
+ 2ND FLOOR SUBSTRATE PLAN
A4 - 3RD FLOOR NEW CARPET PLAN
+ 3RD FLOOR SUBSTRATE PLAN
A5 - SAMPLE REFERENCE DETAILS

SITE PLAN NTS



FLOOR PLAN NTS



NOTES

- ALL CARPET AREAS ARE APPROXIMATE AND SHOULD BE VERIFIED ON SITE PRIOR TO WORK.

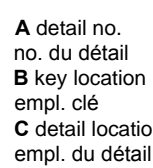
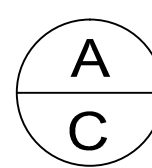
- ALL MEASUREMENTS ARE PRODUCED USING THE INTERNATIONAL SYSTEM OF MEASUREMENTS.

- PHOTOS ARE FOR REFERENCE ONLY AND MAY NOT BE AN ACCURATE REPRESENTATION OF THE EXISTING CARPET COLOURS. SAMPLES SHOULD BE TAKEN ON SITE FOR COLOUR MATCHING PURPOSES.

CARPET SCHEDULE						
CARPET TYPE	PHOTO REFERENCE	PATTERN	FLOOR	WING	APPROX. FLOOR AREA COVERED (SQ. M.)	APPROX. TOTAL (SQ. M.)
TYPE 1-A (Field Pattern)		TEXTURED	0	1910	71	387
			1	1910	86	
			2	1910	116	
			3	1910	115	
TYPE 1-B (Border Pattern)		SOLID COLOUR	0	1910	28	251
			1	1910	51	
			2	1910	80	
			3	1910	91	
TYPE 2-A (Field Pattern)		TEXTURED	0	1910	70	70
			1	N/A	0	
			2	N/A	0	
			3	N/A	0	
TYPE 2-B (Border Pattern)		SOLID COLOUR	0	1910	22	22
			1	N/A	0	
			2	N/A	0	
			3	N/A	0	
TYPE 3		PATTERN	1	1867	122	504
			2	1867	259	
			3	1867	47	
			PRIVY COUNCIL STAIRS	1867	76	
TYPE 4		TEXTURED	SOUTH STAIRS	1867	50	36
			0	N/A	0	
			1	1867 & 1910	36	
			2	N/A	0	
			3	N/A	0	

KEY PLAN PLAN-REPÈRE

06		
05	REVISED TENDER SUBMISSION	201710
04	REVISED TENDER SUBMISSION	201708
03	TENDER SUBMISSION	201705
02	DRAFT SUBMISSION	201704
01	PRELIM DRAFT SUBMISSION	201703
revision		date



project

EAST BLOCK CARPET REPLACEMENT

111 WELLINGTON STREET, OTTAWA, ON

drawing

COVER PAGE

designed

date

drawn

date

revised

date

approved

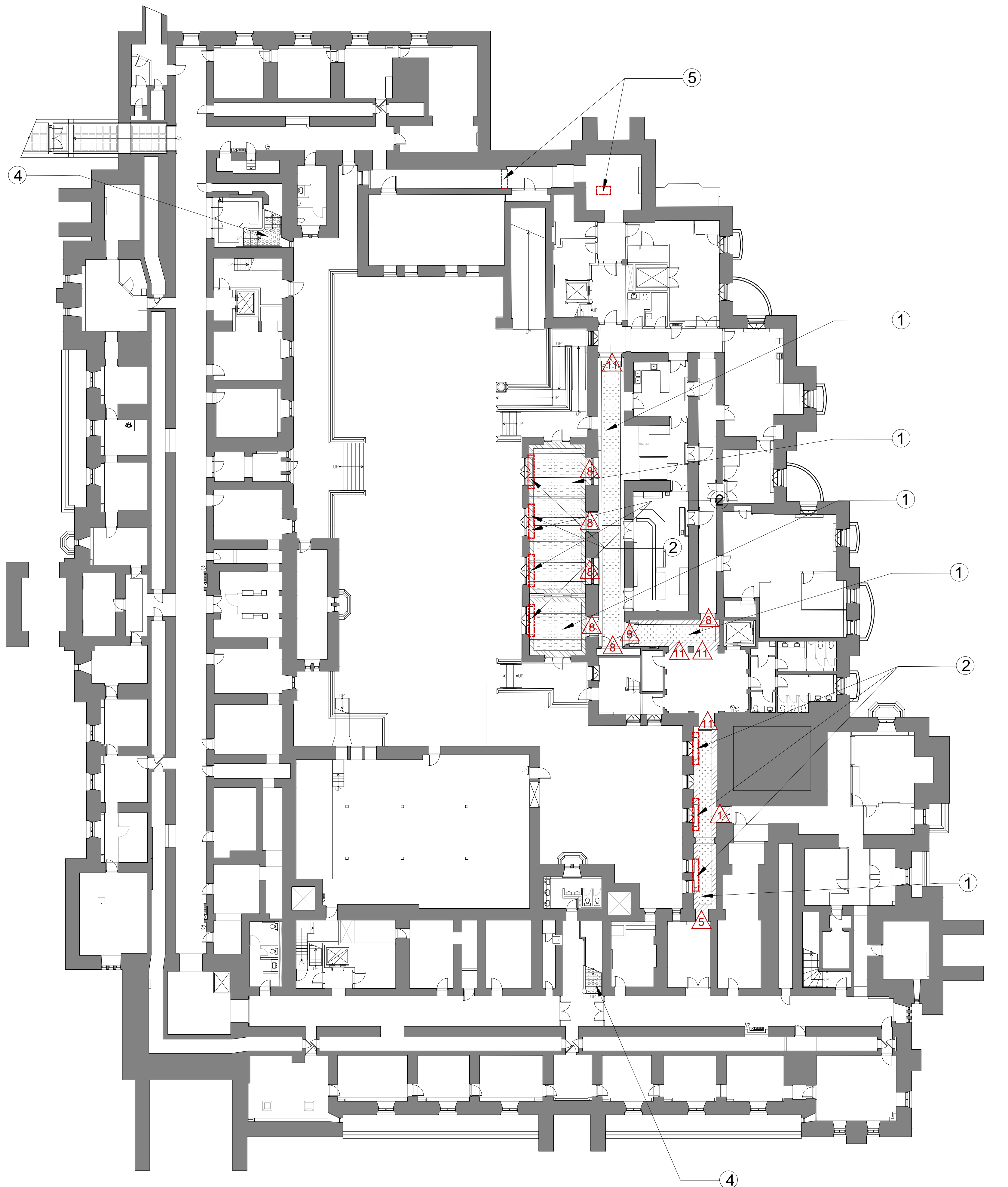
date

tender

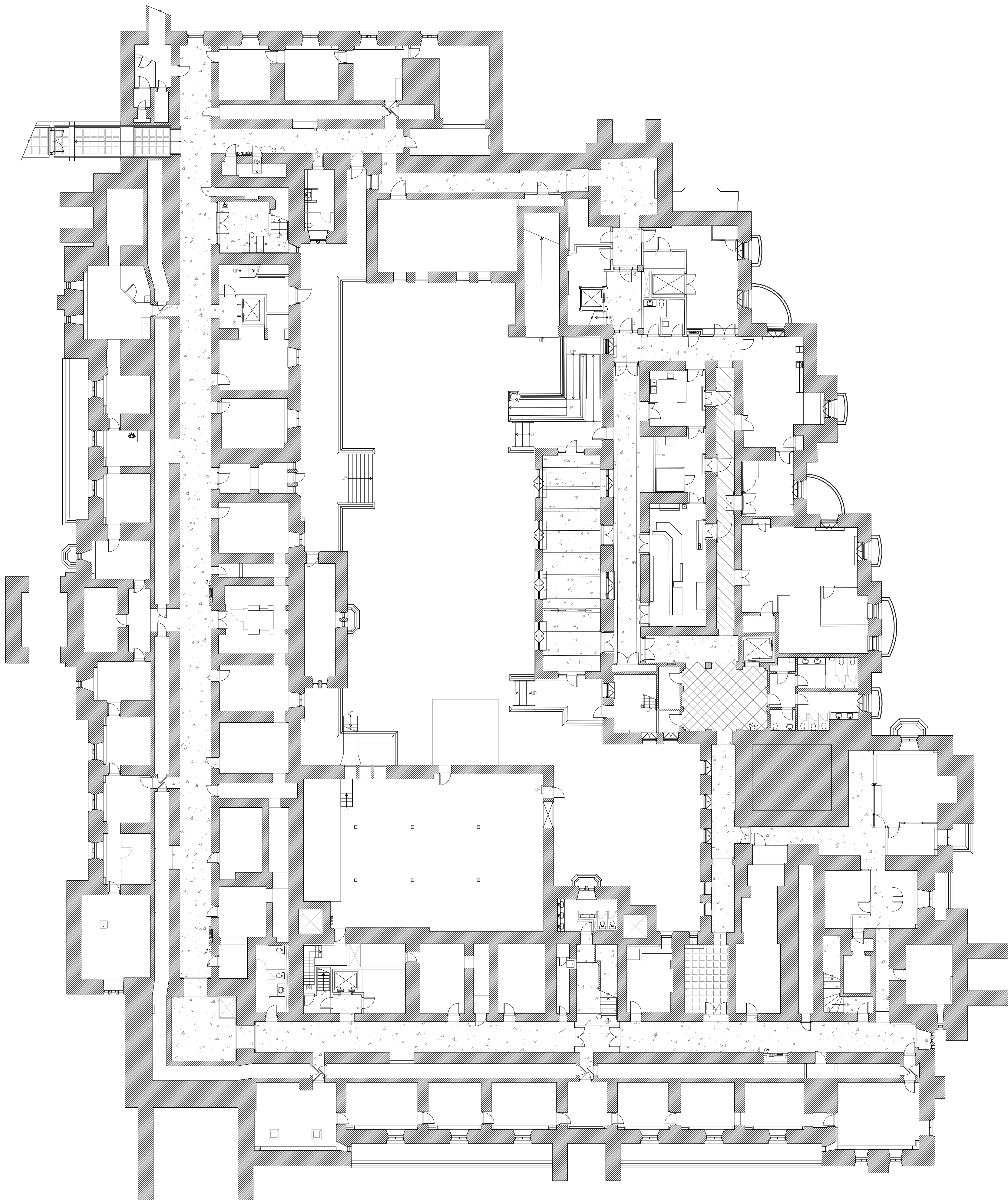
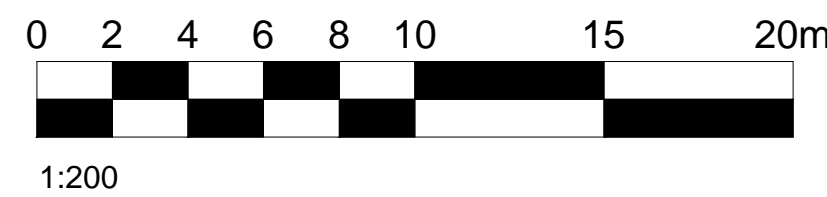
Project Manager

no. du projet

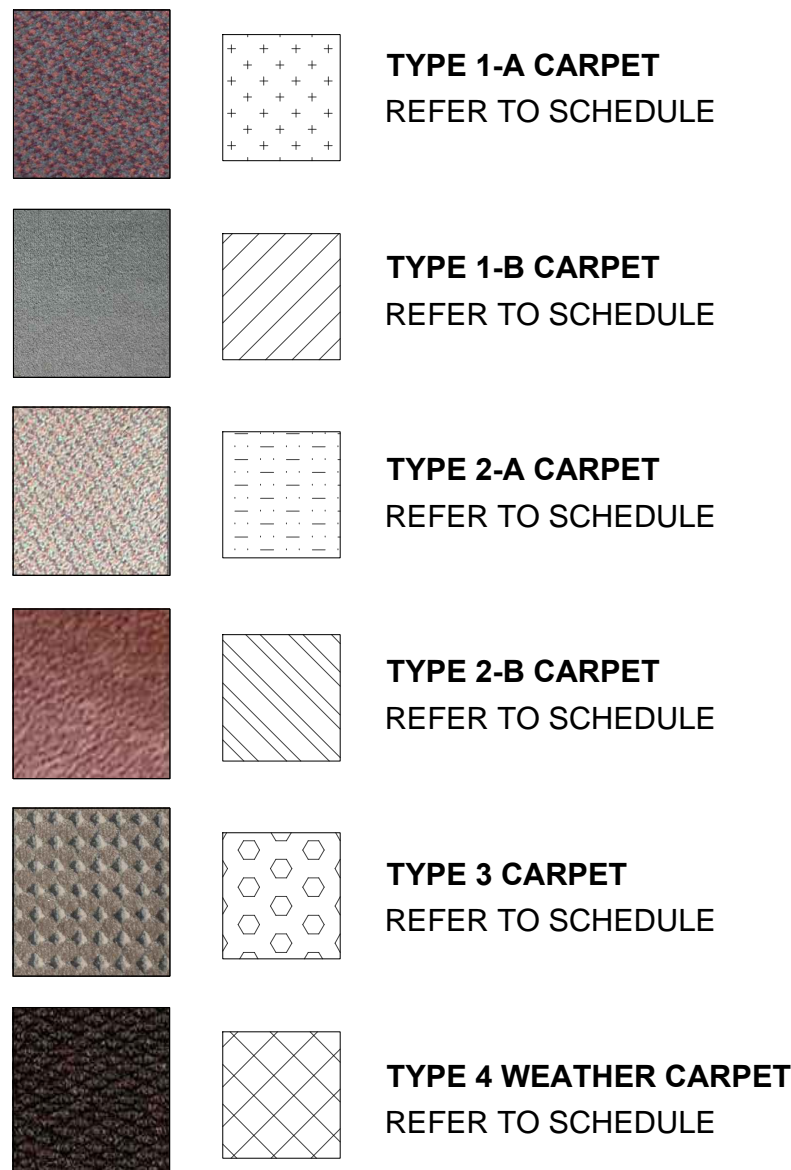
no. du dessin



1 BASEMENT NEW CARPET PLAN
A1 NTS



2 BASEMENT SUBSTRATE PLAN
A1 NTS



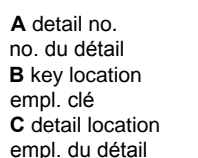
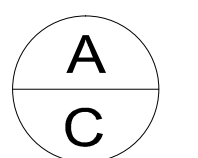
- EXISTING CARPET TO BE REMOVED AND REPLACED WITH CORRESPONDING NEW CARPET TYPE.
- RADIATOR COVERS TO BE TEMPORARILY REMOVED AND STORED FOR THE DURATION OF WORK AND REINSTALLED FOLLOWING COMPLETION. APPROX. 26 LOCATIONS.
- EXISTING BASEBOARDS TO BE TEMPORARILY REMOVED AND STORED FOR THE DURATION OF WORK AND REINSTALLED FOLLOWING COMPLETION.
- EXISTING STAIR RUNNER TO BE REMOVED AND REPLACED WITH NEW CARPET RUNNER.
- TRIP HAZARD TO BE FIXED.
- WEATHER CARPET TO BE INSTALLED FOR SEPTEMBER 2018.
- EXISTING CARPET TO BE REMOVED AND LEAVE TILES TO BE EXPOSED.

TRANSITION NOTES

- TYPICAL OFFICE THRESHOLD DETAIL IN 1867 WING. APPROXIMATELY 41 LOCATIONS. REFER TO DETAIL (A1/A5).
- TYPICAL SECONDARY THRESHOLD DETAIL IN 1867 WING. APPROXIMATELY 9 LOCATIONS. REFER TO DETAIL (A2/A5).
- TYPICAL ELEVATOR THRESHOLD DETAIL IN 1867 WING. APPROXIMATELY 3 LOCATIONS. REFER TO DETAIL (A3/A5).
- TYPICAL WASHROOM THRESHOLD DETAIL IN 1867 WING. APPROXIMATELY 7 LOCATIONS. REFER TO DETAIL (A4/A5).
- TYPICAL CARPET-TILE TRANSITION DETAIL IN 1867 WING. APPROXIMATELY 12 LOCATIONS. REFER TO DETAIL (A5/A5).
- TYPICAL CARPET-CARPET TRANSITION DETAIL IN 1867 WING. APPROXIMATELY 3 LOCATIONS. REFER TO DETAIL (A6/A5).
- TYPICAL RAISED TILE TRANSITION DETAIL IN 1867 WING. APPROXIMATELY 1 LOCATIONS. REFER TO DETAIL (A7/A5).
- TYPICAL CARPET REDUCER DETAIL IN 1910 WING. APPROXIMATELY 6 LOCATION. REFER TO DETAIL (A8/A5).
- TYPICAL OFFICE THRESHOLD DETAIL IN 1910 WING. APPROXIMATELY 40 LOCATIONS. REFER TO DETAIL (A9/A5).
- TYPICAL WASHROOM THRESHOLD DETAIL IN 1910 WING. APPROXIMATELY 12 LOCATIONS. REFER TO DETAIL (A10/A5).
- TYPICAL METAL LOBBY EDGING DETAIL. APPROXIMATELY 18 LOCATIONS. REFER TO DETAIL (A11/A5).
- THRESHOLD DETAIL TO BE VERIFIED ON SITE. APPROXIMATELY 23 LOCATIONS.

KEY PLAN PLAN-REPÈRE

revision		date
06		
05	REVISED TENDER SUBMISSION	2017/10
04	REVISED TENDER SUBMISSION	2017/08
03	TENDER SUBMISSION	2017/05
02	DRAFT SUBMISSION	2017/04
01	PRELIM DRAFT SUBMISSION	2017/03



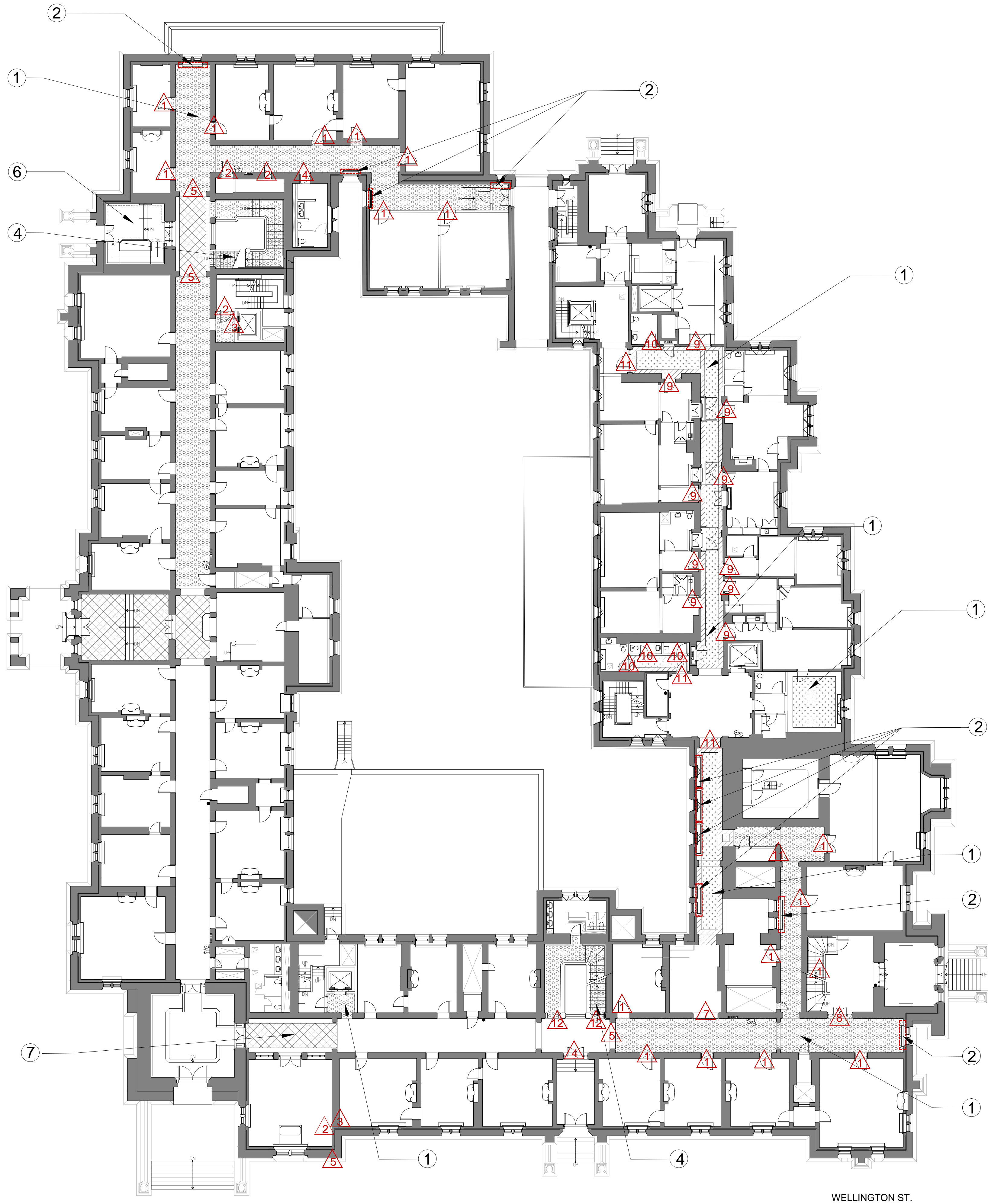
project

EAST BLOCK CARPET REPLACEMENT

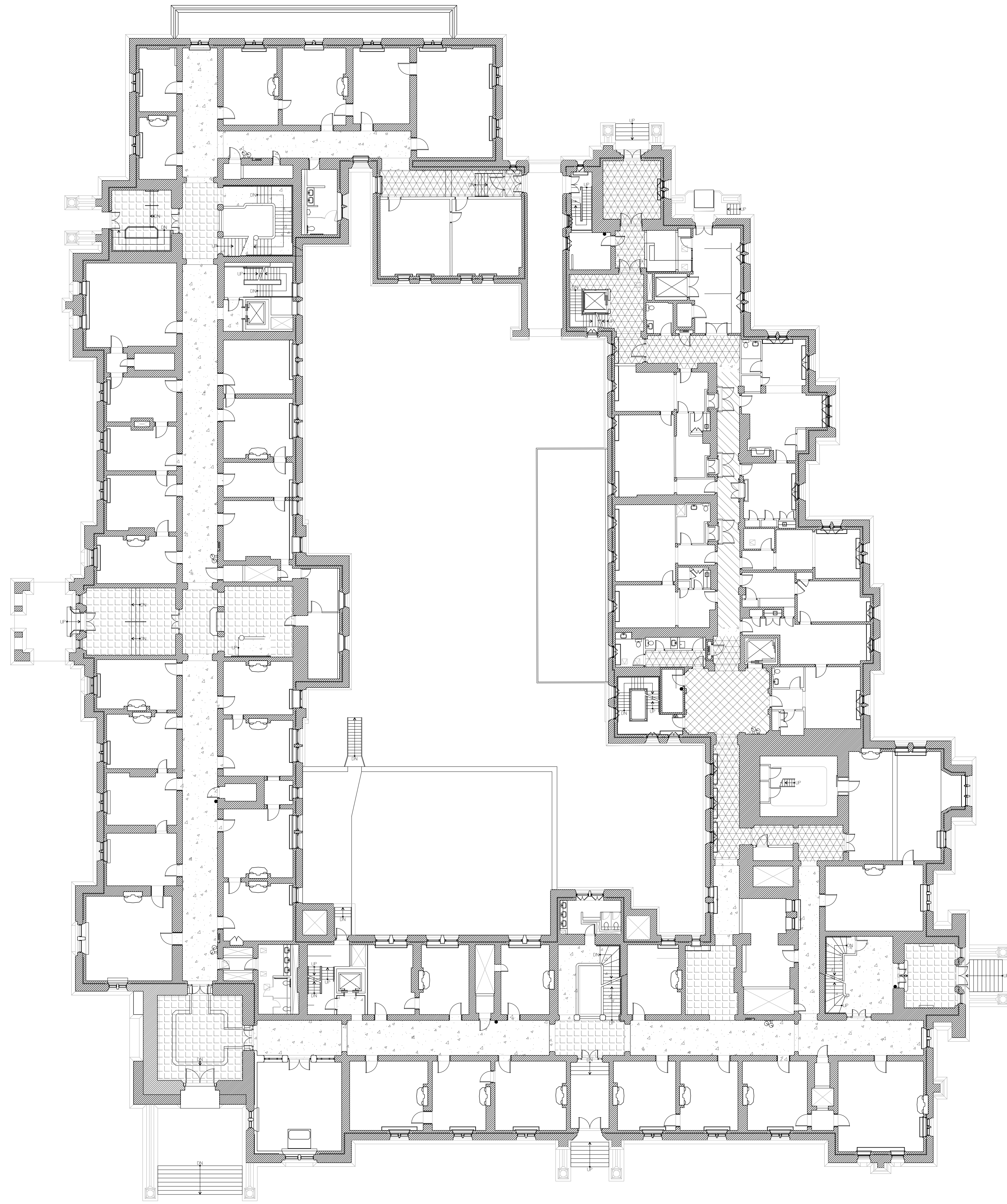
111 WELLINGTON STREET, OTTAWA, ON

NEW BASEMENT CARPET + BASEMENT SUBSTRATE PLANS

designed	M. LEGINES	conçu
date	2017/10	
drawn	M. LEGINES	dessiné
date	2017/10	
reviewed	C. LUMSDON	examiné
date	2017/10	
approved		approuvé
date		
tender		soumission
Project Manager	Administrateur de projets	
project no.	R.011972.028	no. du projet
drawing no.		no. du dessin



1 MAIN FLOOR NEW CARPET PLAN
A2 NTS



2 MAIN FLOOR SUBSTRATE PLAN
A2 NTS



	TYPE 1-A CARPET REFER TO SCHEDULE
	TYPE 1-B CARPET REFER TO SCHEDULE
	TYPE 2-A CARPET REFER TO SCHEDULE
	TYPE 2-B CARPET REFER TO SCHEDULE
	TYPE 3 CARPET REFER TO SCHEDULE
	TYPE 4 WEATHER CARPET REFER TO SCHEDULE

- EXISTING CARPET TO BE REMOVED AND REPLACED WITH CORRESPONDING NEW CARPET TYPE.
- RADIATOR COVERS TO BE TEMPORARILY REMOVED AND STORED FOR THE DURATION OF WORK AND REINSTALLED FOLLOWING COMPLETION. APPROX. 26 LOCATIONS.
- EXISTING BASEBOARDS TO BE TEMPORARILY REMOVED AND STORED FOR THE DURATION OF WORK AND REINSTALLED FOLLOWING COMPLETION.
- EXISTING STAIR RUNNER TO BE REMOVED AND REPLACED WITH NEW CARPET RUNNER.
- TRIP HAZARD TO BE FIXED.
- WEATHER CARPET TO BE INSTALLED FOR SEPTEMBER 2018.
- EXISTING CARPET TO BE REMOVED AND LEAVE TILES TO BE EXPOSED.

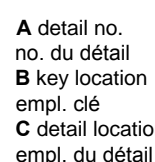
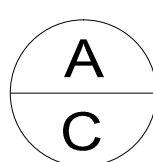
TRANSITION NOTES

- TYPICAL OFFICE THRESHOLD DETAIL IN 1867 WING. APPROXIMATELY 41 LOCATIONS. REFER TO DETAIL
- TYPICAL SECONDARY THRESHOLD DETAIL IN 1867 WING. APPROXIMATELY 9 LOCATIONS. REFER TO DETAIL
- TYPICAL ELEVATOR THRESHOLD DETAIL IN 1867 WING. APPROXIMATELY 3 LOCATIONS. REFER TO DETAIL
- TYPICAL WASHROOM THRESHOLD DETAIL IN 1867 WING. APPROXIMATELY 7 LOCATIONS. REFER TO DETAIL
- TYPICAL CARPET-TILE TRANSITION DETAIL IN 1867 WING. APPROXIMATELY 12 LOCATIONS. REFER TO DETAIL
- TYPICAL CARPET-CARPET TRANSITION DETAIL IN 1867 WING. APPROXIMATELY 3 LOCATIONS. REFER TO DETAIL
- TYPICAL RAISED TILE TRANSITION DETAIL IN 1867 WING. APPROXIMATELY 1 LOCATIONS. REFER TO DETAIL
- TYPICAL CARPET REDUCER DETAIL IN 1910 WING. APPROXIMATELY 6 LOCATION. REFER TO DETAIL

- TYPICAL OFFICE THRESHOLD DETAIL IN 1910 WING. APPROXIMATELY 40 LOCATIONS. REFER TO DETAIL
- TYPICAL WASHROOM THRESHOLD DETAIL IN 1910 WING. APPROXIMATELY 12 LOCATIONS. REFER TO DETAIL
- TYPICAL METAL LOBBY EDGING DETAIL. APPROXIMATELY 18 LOCATIONS. REFER TO DETAIL
- THRESHOLD DETAIL TO BE VERIFIED ON SITE. APPROXIMATELY 23 LOCATIONS.

KEY PLAN
PLAN-REPÈRE

revision	date
06	
05	REVISED TENDER SUBMISSION 2017110
04	REVISED TENDER SUBMISSION 201708
03	TENDER SUBMISSION 201705
02	DRAFT SUBMISSION 201704
01	PRELIM DRAFT SUBMISSION 201703

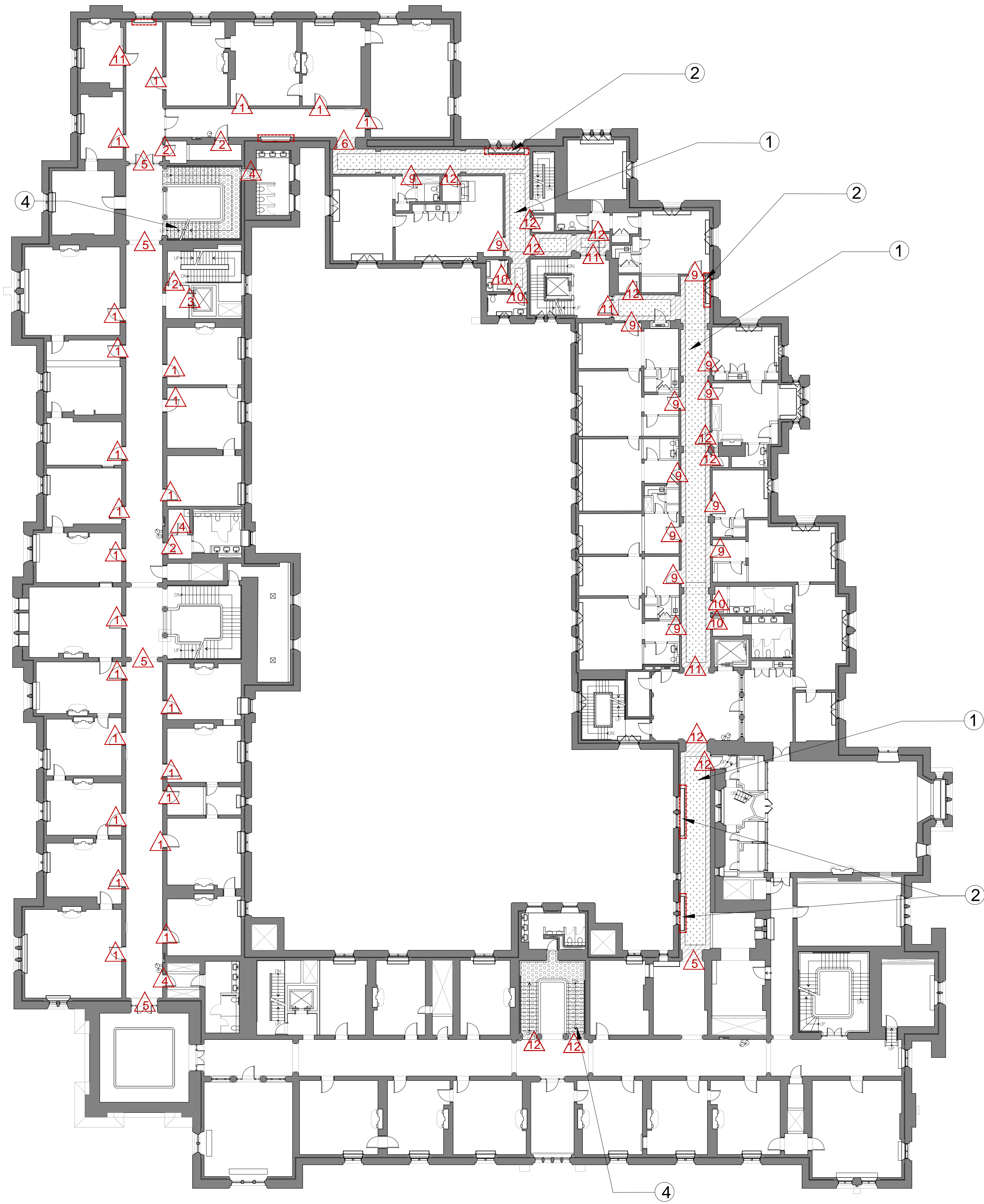


EAST BLOCK
CARPET REPLACEMENT

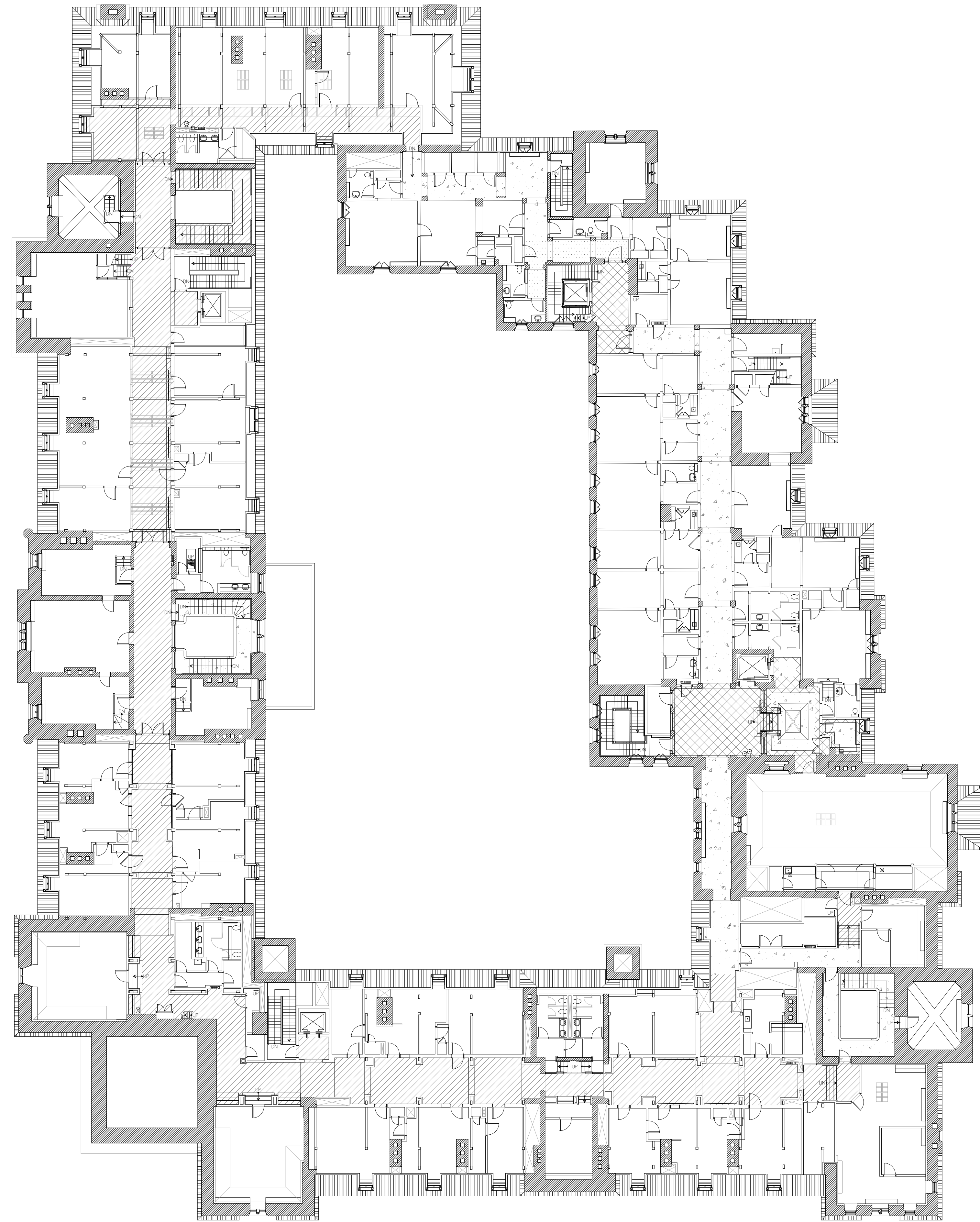
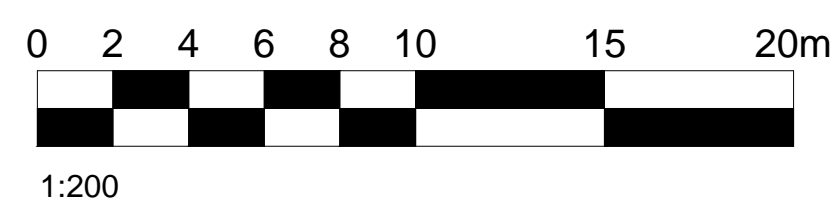
111 WELLINGTON STREET, OTTAWA, ON

NEW MAIN FLOOR
CARPET + MAIN FLOOR
SUBSTRATE PLANS

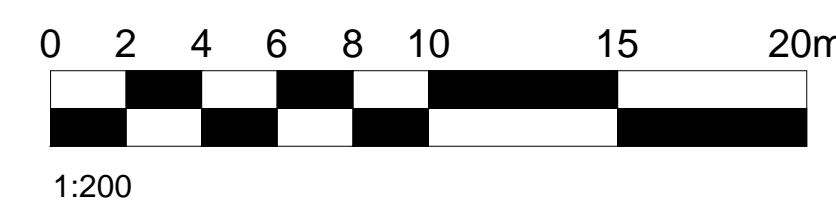
designed	M. LEGINES	conçu
date	2017110	
drawn	M. LEGINES	dessiné
date	2017110	
reviewed	C. LUMSDON	examiné
date	2017110	
approved		approuvé
date		
tender		soumission
Project Manager	Administrateur de projets	
project no.	no. du projet	
	R.011972.028	
drawing no.	no. du dessin	
	A2 of 5	



1 2ND FLOOR NEW CARPET PLAN
A3 NTS



2 2ND FLOOR SUBSTRATE PLAN
A3 NTS



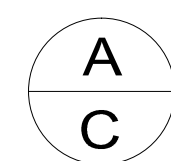
- EXISTING CARPET TO BE REMOVED AND REPLACED WITH CORRESPONDING NEW CARPET TYPE.
- RADIATOR COVERS TO BE TEMPORARILY REMOVED AND STORED FOR THE DURATION OF WORK AND REINSTALLED FOLLOWING COMPLETION. APPROX. 26 LOCATIONS.
- EXISTING BASEBOARDS TO BE TEMPORARILY REMOVED AND STORED FOR THE DURATION OF WORK AND REINSTALLED FOLLOWING COMPLETION.
- EXISTING STAIR RUNNER TO BE REMOVED AND REPLACED WITH NEW CARPET RUNNER.
- TRIP HAZARD TO BE FIXED.
- WEATHER CARPET TO BE INSTALLED FOR SEPTEMBER 2018.
- EXISTING CARPET TO BE REMOVED AND LEAVE TILES TO BE EXPOSED.

TRANSITION NOTES

- TYPICAL OFFICE THRESHOLD DETAIL IN 1867 WING. APPROXIMATELY 41 LOCATIONS. REFER TO DETAIL (01 A5)
- TYPICAL SECONDARY THRESHOLD DETAIL IN 1867 WING. APPROXIMATELY 9 LOCATIONS. REFER TO DETAIL (02 A5)
- TYPICAL ELEVATOR THRESHOLD DETAIL IN 1867 WING. APPROXIMATELY 3 LOCATIONS. REFER TO DETAIL (03 A5)
- TYPICAL WASHROOM THRESHOLD DETAIL IN 1867 WING. APPROXIMATELY 7 LOCATIONS. REFER TO DETAIL (04 A5)
- TYPICAL CARPET-TILE TRANSITION DETAIL IN 1867 WING. APPROXIMATELY 12 LOCATIONS. REFER TO DETAIL (05 A5)
- TYPICAL CARPET-CARPET TRANSITION DETAIL IN 1867 WING. APPROXIMATELY 3 LOCATIONS. REFER TO DETAIL (06 A5)
- TYPICAL RAISED TILE TRANSITION DETAIL IN 1867 WING. APPROXIMATELY 1 LOCATIONS. REFER TO DETAIL (07 A5)
- TYPICAL CARPET REDUCER DETAIL IN 1910 WING. APPROXIMATELY 6 LOCATION. REFER TO DETAIL (08 A5)
- TYPICAL OFFICE THRESHOLD DETAIL IN 1910 WING. APPROXIMATELY 40 LOCATIONS. REFER TO DETAIL (09 A5)
- TYPICAL WASHROOM THRESHOLD DETAIL IN 1910 WING. APPROXIMATELY 12 LOCATIONS. REFER TO DETAIL (10 A5)
- TYPICAL METAL LOBBY EDGING DETAIL. APPROXIMATELY 18 LOCATIONS. REFER TO DETAIL (11 A5)
- THRESHOLD DETAIL TO BE VERIFIED ON SITE. APPROXIMATELY 23 LOCATIONS.

KEY PLAN
PLAN-REPERE

06		
05	REVISED TENDER SUBMISSION	2017/10
04	REVISED TENDER SUBMISSION	2017/08
03	TENDER SUBMISSION	2017/05
02	DRAFT SUBMISSION	2017/04
01	PRELIM DRAFT SUBMISSION	2017/03
revision		date



project project

EAST BLOCK
CARPET REPLACEMENT

111 WELLINGTON STREET, OTTAWA, ON

NEW 2ND FLOOR
CARPET + 2ND FLOOR
SUBSTRATE PLANS

designed	M. LEGINES	conçu
date	2017/10	
dram	M. LEGINES	dessiné
date	2017/10	
reviewed	C. LUMSDON	examiné
date	2017/10	
approved		approuvé
date		
tender		soumission
Project Manager		Administrateur de projets
project no.		no. du projet
	R.011972.028	
drawing no.		no. du dessin
	A3 of 5	

KEY PLAN
PLAN-REPERE

06		
05	REVISED TENDER SUBMISSION	2017/10
04	REVISED TENDER SUBMISSION	2017/08
03	TENDER SUBMISSION	2017/05
02	DRAFT SUBMISSION	2017/04
01	PRELIM DRAFT SUBMISSION	2017/03

revision	date
----------	------

A C	A detail no. no. du détail empl. cdt C detail location empl. du détail	A B C
--------	--	----------

project

EAST BLOCK
CARPET REPLACEMENT

111 WELLINGTON STREET, OTTAWA, ON

drawing

NEW 3RD FLOOR
CARPET + 3RD FLOOR
SUBSTRATE PLANS

designed M. LEGINES
date 2017/10

drawn M. LEGINES
date 2017/10

reviewed C. LUMSDON
date 2017/10

approved

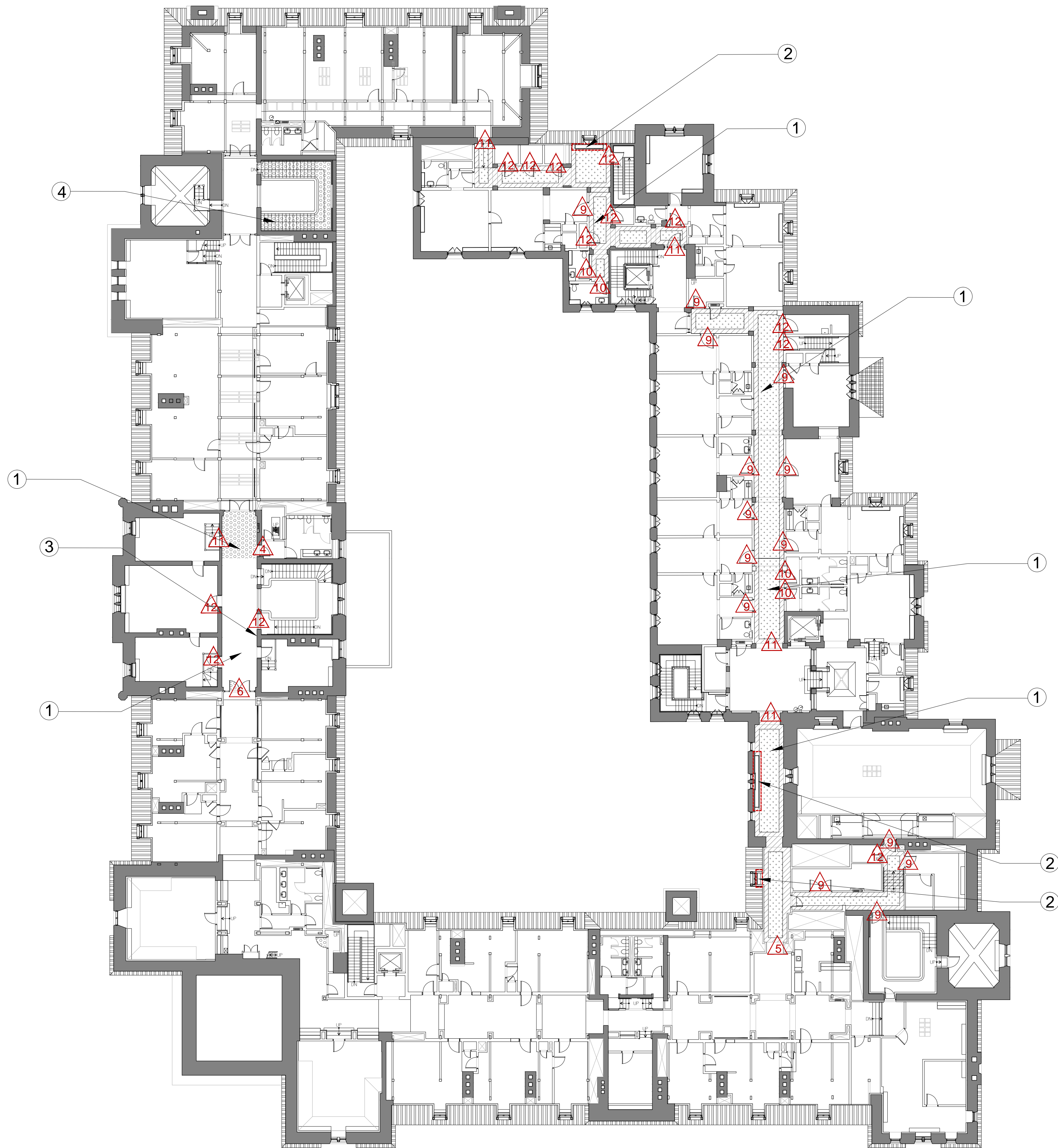
date

tender

Project Manager

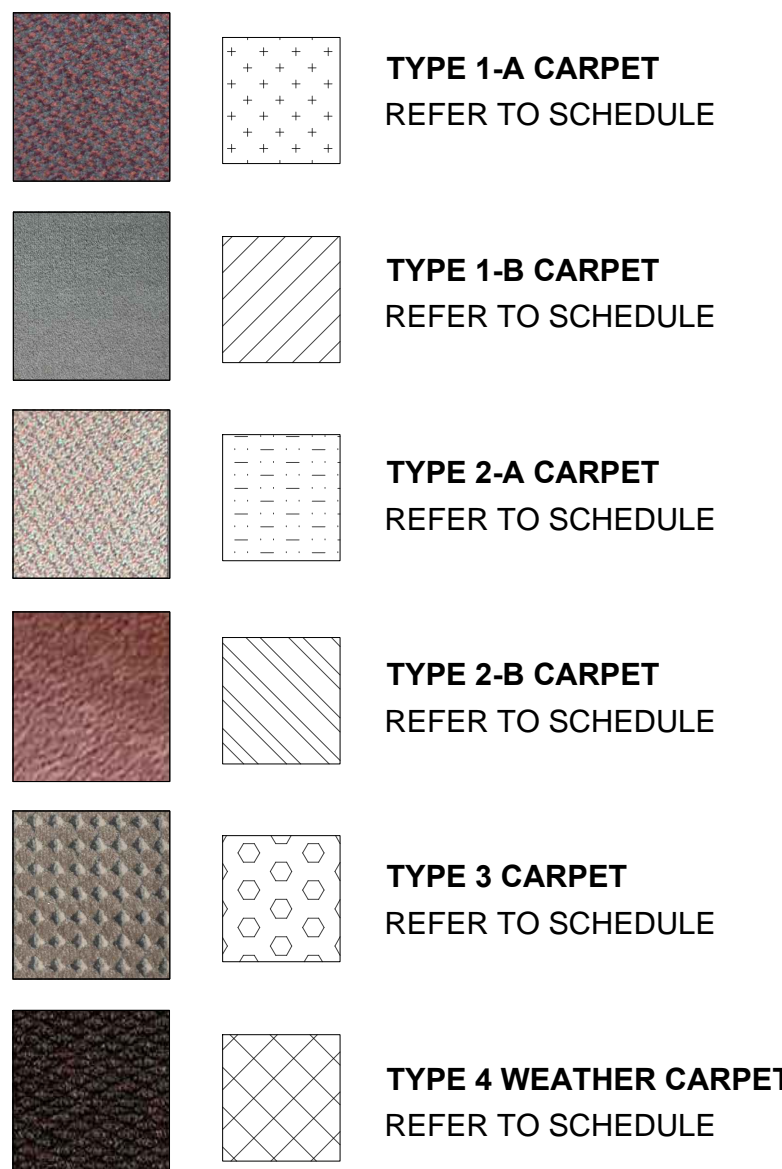
project no.

drawing no.



1
A4
3RD FLOOR NEW CARPET PLAN
NTS

0 2 4 6 8 10 15 20m
1:200

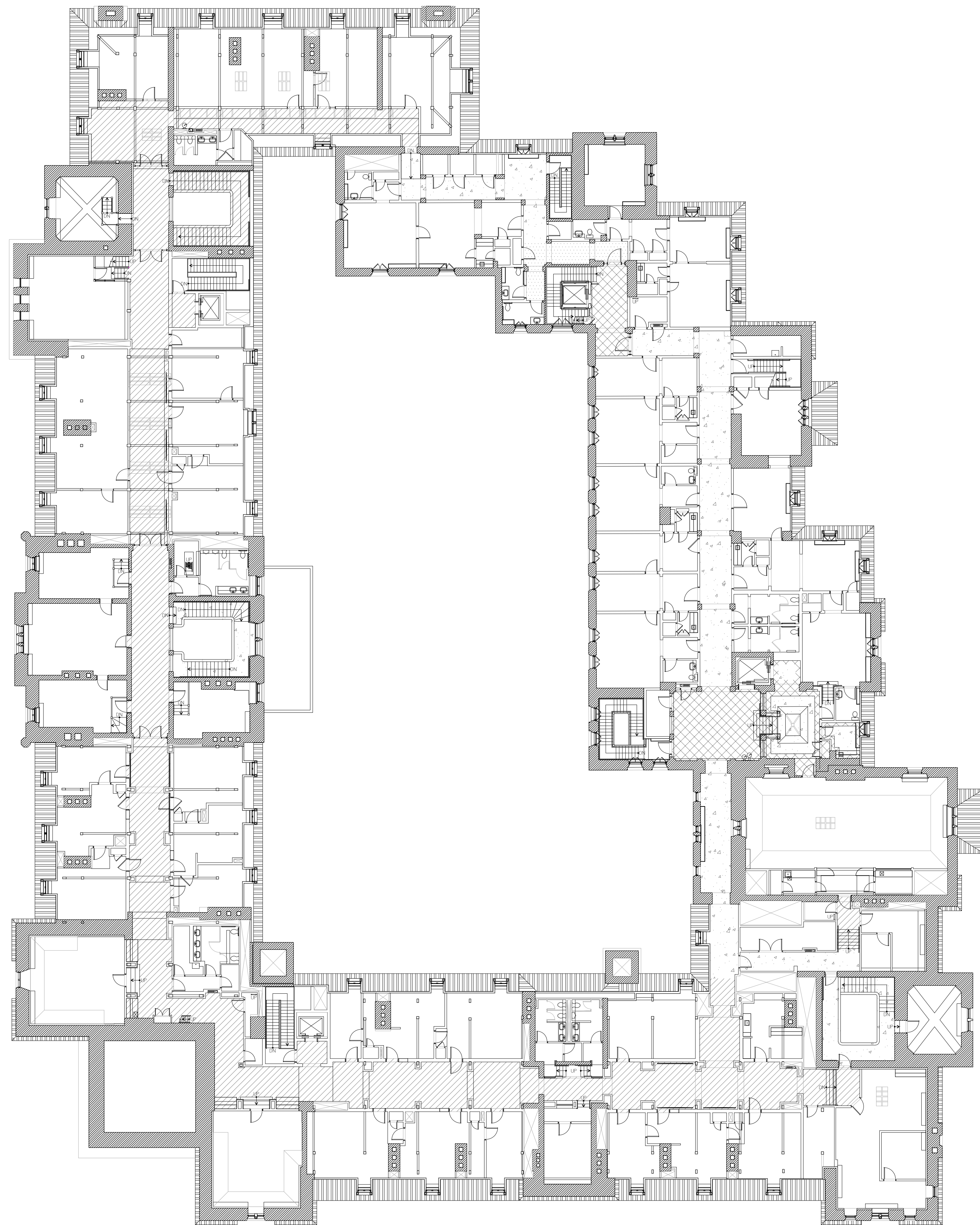


- EXISTING CARPET TO BE REMOVED AND REPLACED WITH CORRESPONDING NEW CARPET TYPE.
- RADIATOR COVERS TO BE TEMPORARILY REMOVED AND STORED FOR THE DURATION OF WORK AND REINSTALLED FOLLOWING COMPLETION. APPROX. 26 LOCATIONS.
- EXISTING BASEBOARDS TO BE TEMPORARILY REMOVED AND STORED FOR THE DURATION OF WORK AND REINSTALLED FOLLOWING COMPLETION.
- EXISTING STAIR RUNNER TO BE REMOVED AND REPLACED WITH NEW CARPET RUNNER.
- TRIP HAZARD TO BE FIXED.
- WEATHER CARPET TO BE INSTALLED FOR SEPTEMBER 2018.
- EXISTING CARPET TO BE REMOVED AND LEAVE TILES TO BE EXPOSED.

TRANSITION NOTES

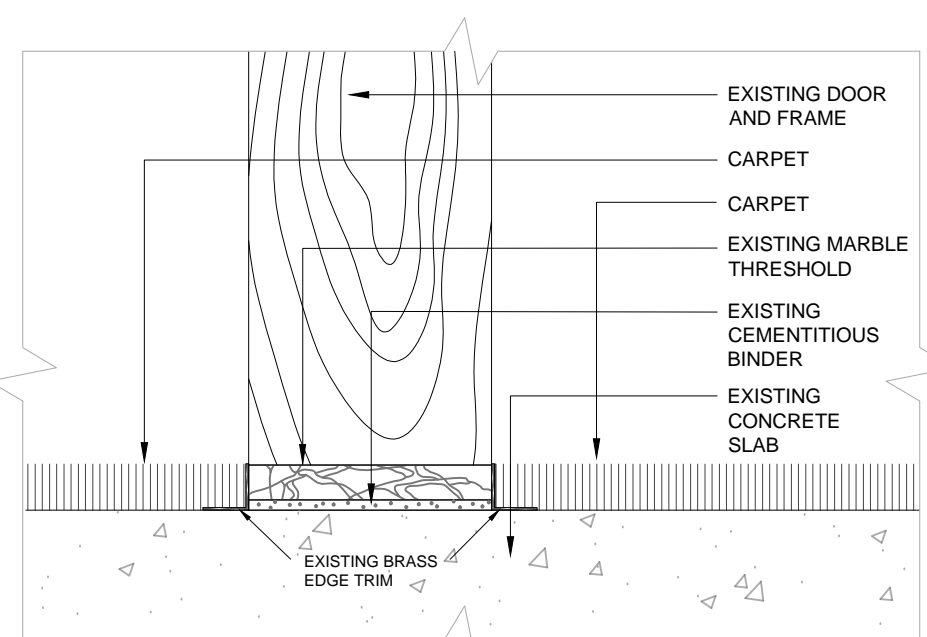
- TYPICAL OFFICE THRESHOLD DETAIL IN 1867 WING. APPROXIMATELY 41 LOCATIONS. REFER TO DETAIL (01 A5).
- TYPICAL SECONDARY THRESHOLD DETAIL IN 1867 WING. APPROXIMATELY 9 LOCATIONS. REFER TO DETAIL (02 A5).
- TYPICAL ELEVATOR THRESHOLD DETAIL IN 1867 WING. APPROXIMATELY 3 LOCATIONS. REFER TO DETAIL (03 A5).
- TYPICAL WASHROOM THRESHOLD DETAIL IN 1867 WING. APPROXIMATELY 7 LOCATIONS. REFER TO DETAIL (04 A5).
- TYPICAL CARPET-TILE TRANSITION DETAIL IN 1867 WING. APPROXIMATELY 12 LOCATIONS. REFER TO DETAIL (05 A5).
- TYPICAL CARPET-CARPET TRANSITION DETAIL IN 1867 WING. APPROXIMATELY 3 LOCATIONS. REFER TO DETAIL (06 A5).
- TYPICAL RAISED TILE TRANSITION DETAIL IN 1867 WING. APPROXIMATELY 1 LOCATIONS. REFER TO DETAIL (07 A5).
- TYPICAL CARPET REDUCER DETAIL IN 1910 WING. APPROXIMATELY 6 LOCATIONS. REFER TO DETAIL (08 A5).

- TYPICAL OFFICE THRESHOLD DETAIL IN 1910 WING. APPROXIMATELY 40 LOCATIONS. REFER TO DETAIL (09 A5).
- TYPICAL WASHROOM THRESHOLD DETAIL IN 1910 WING. APPROXIMATELY 12 LOCATIONS. REFER TO DETAIL (10 A5).
- TYPICAL METAL LOBBY EDGING DETAIL. APPROXIMATELY 18 LOCATIONS. REFER TO DETAIL (11 A5).
- THRESHOLD DETAIL TO BE VERIFIED ON SITE. APPROXIMATELY 23 LOCATIONS.

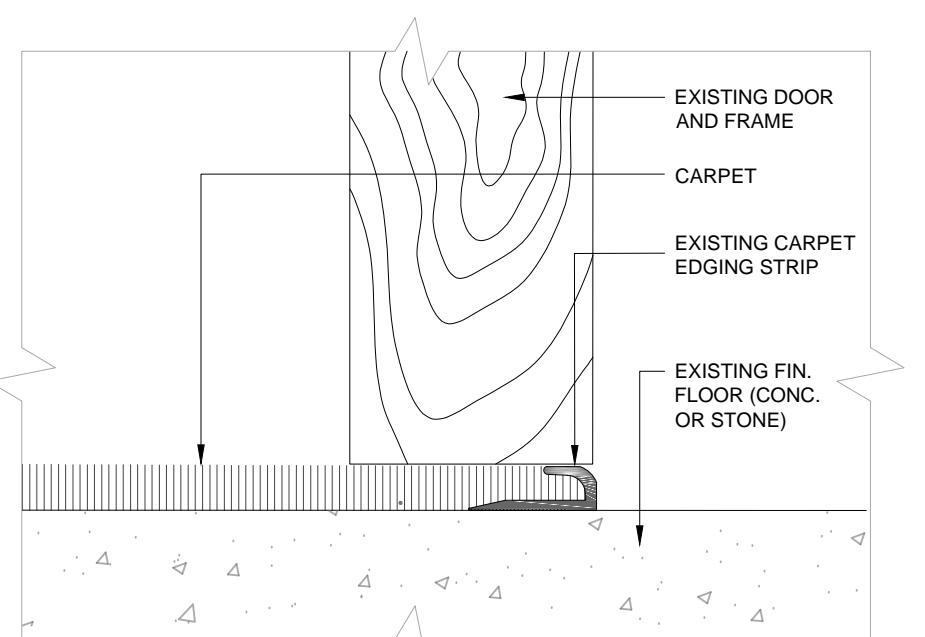


2
A4
3RD FLOOR SUBSTRATE PLAN
NTS

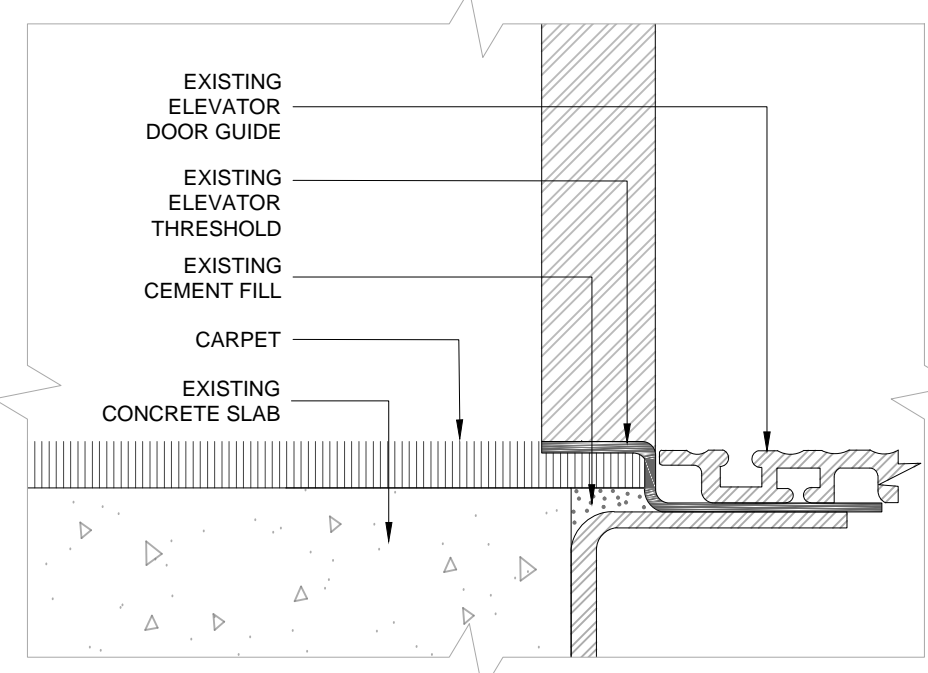
0 2 4 6 8 10 15 20m
1:200



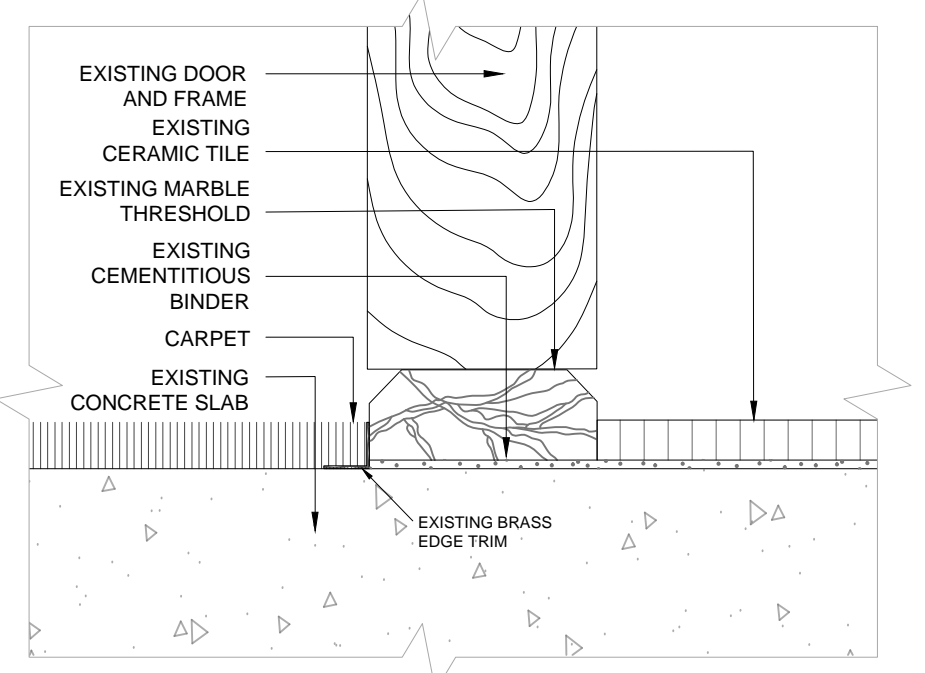
01
AS / NTS
TYPICAL OFFICE THRESHOLD DETAIL



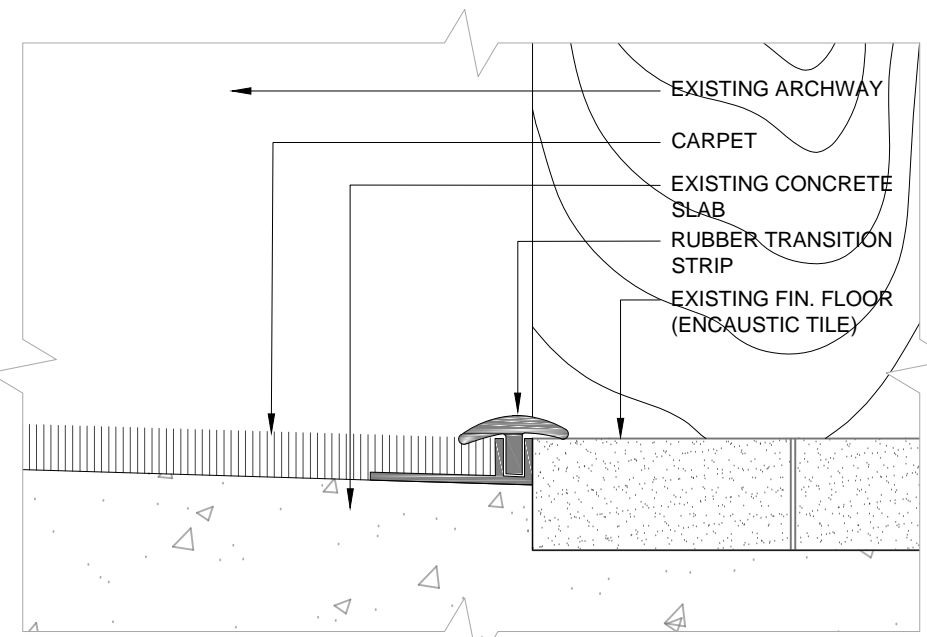
02
AS / NTS
TYPICAL SECONDARY THRESHOLD DETAIL



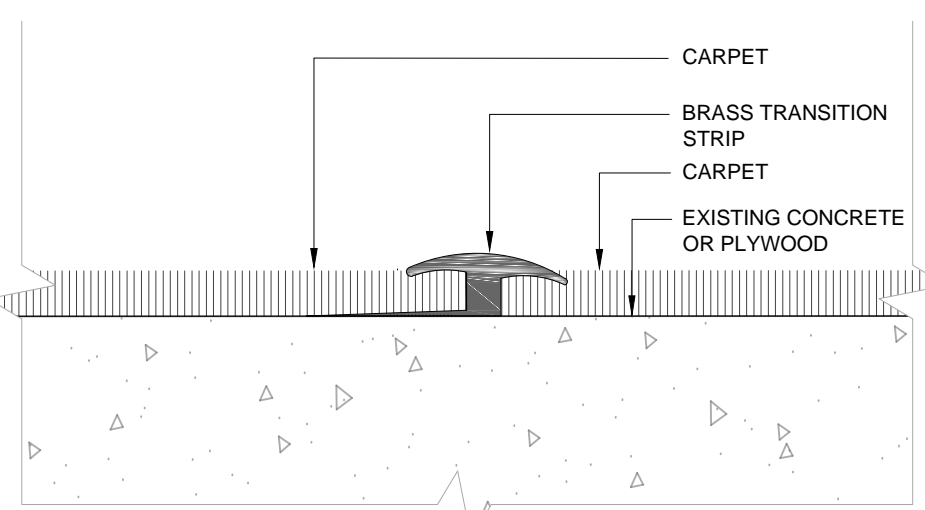
03
AS / NTS
TYPICAL ELEVATOR THRESHOLD DETAIL



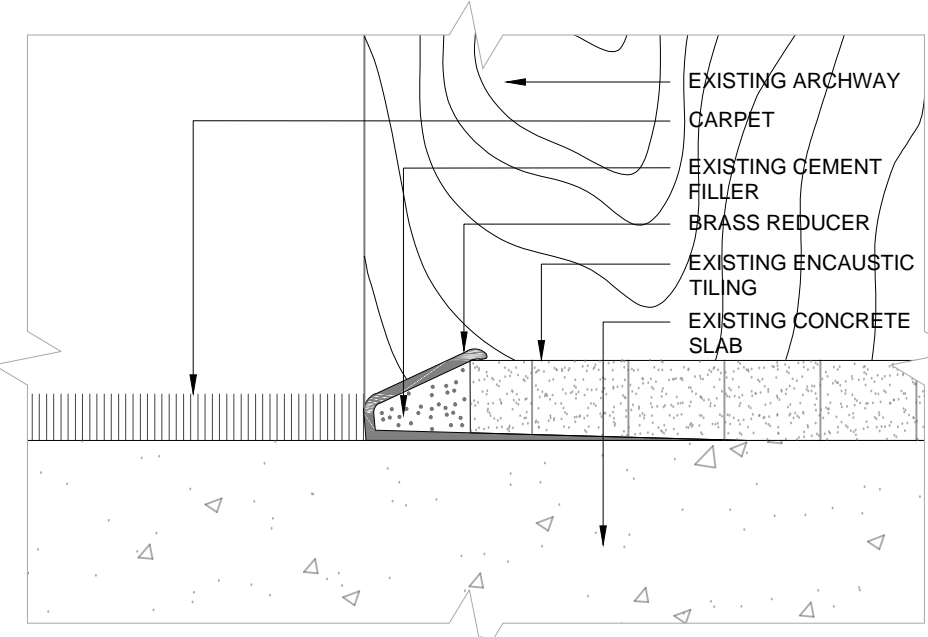
04
AS / NTS
TYPICAL WASHROOM THRESHOLD DETAIL



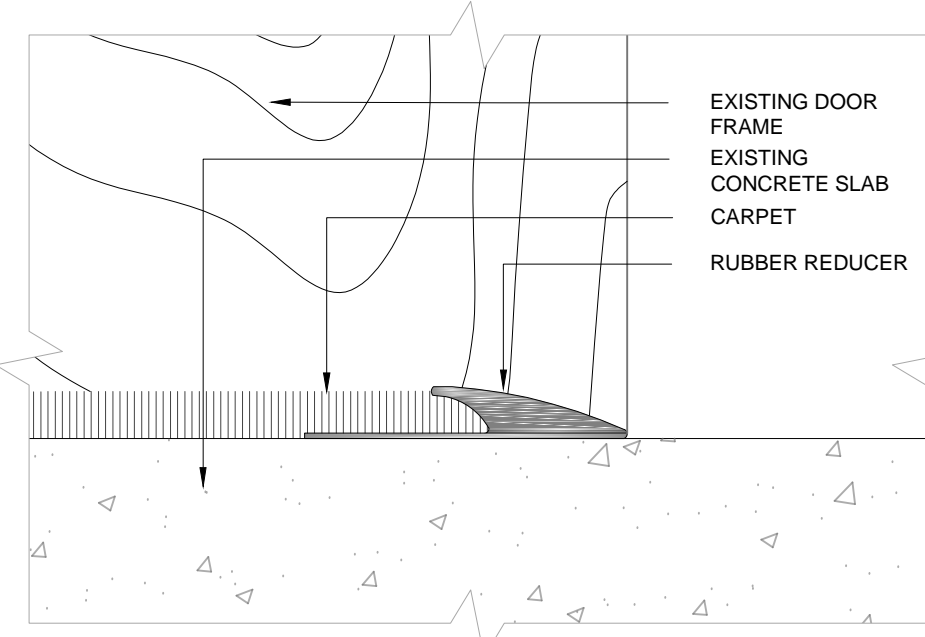
05
AS / NTS
TYPICAL CARPET-TILE TRANSITION DETAIL



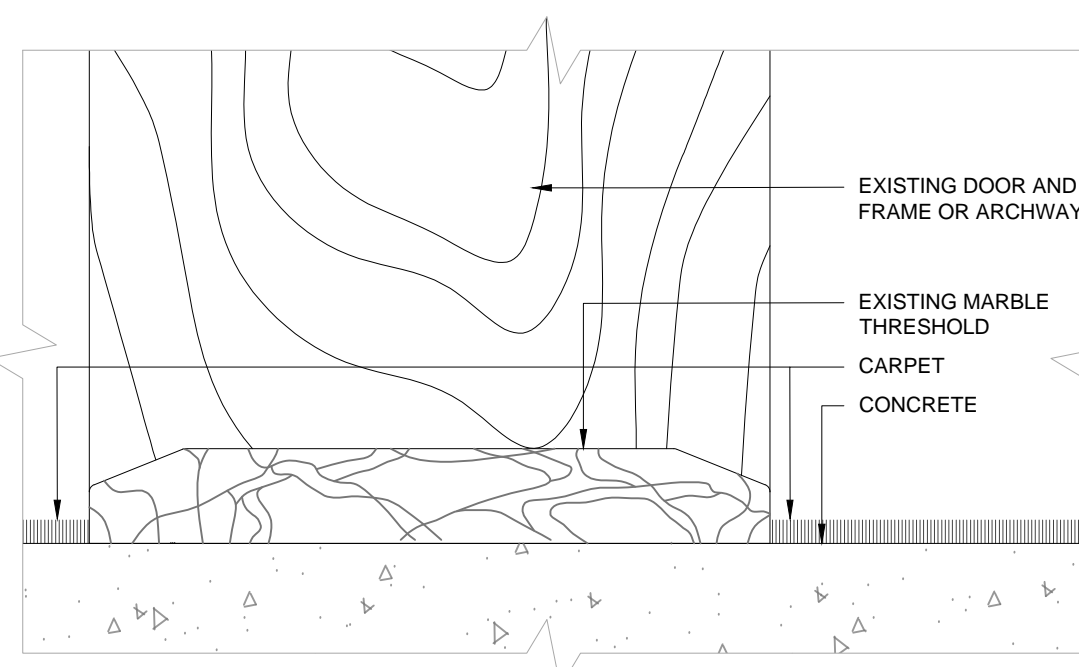
06
AS / NTS
TYPICAL CARPET-CARPET TRANSITION DETAIL



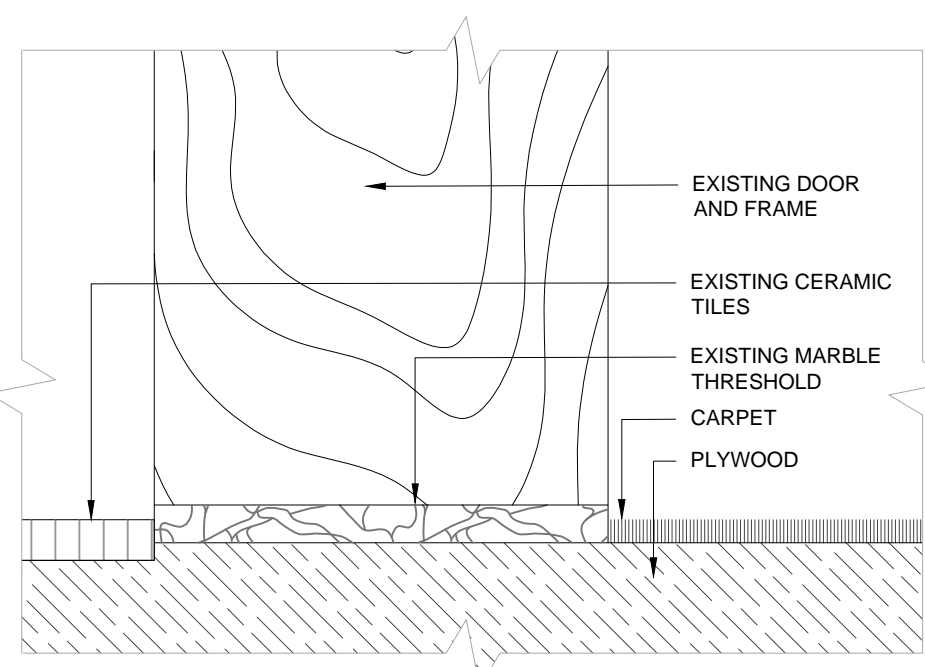
07
AS / NTS
TYPICAL RAISED TILE TRANSITION DETAIL



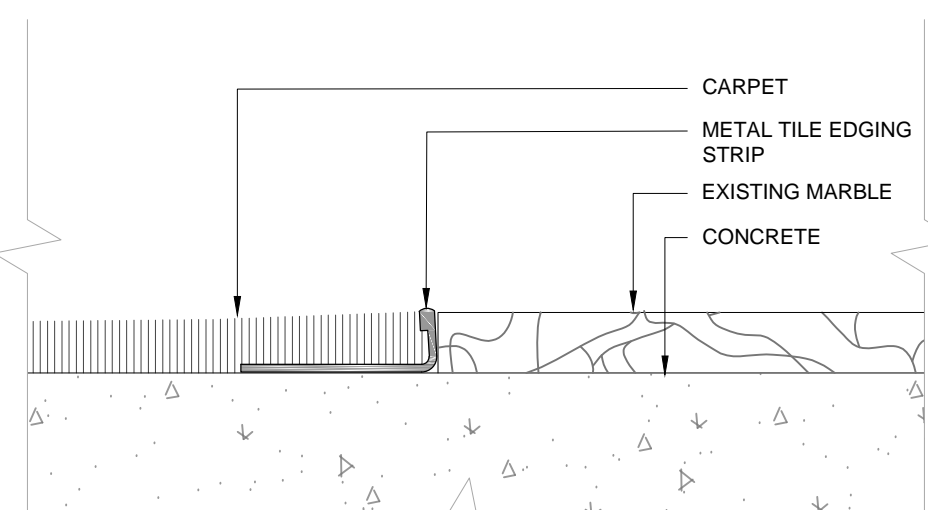
08
AS / NTS
TYPICAL CARPET REDUCER DETAIL



09
AS / NTS
TYPICAL OFFICE THRESHOLD DETAIL



10
AS / NTS
TYPICAL WASHROOM THRESHOLD DETAIL



11
AS / NTS
TYPICAL METAL LOBBY EDGING DETAIL



- EXISTING CARPET TO BE REMOVED AND REPLACED WITH CORRESPONDING NEW CARPET TYPE.
- RADIATOR COVERS TO BE TEMPORARILY REMOVED AND STORED FOR THE DURATION OF WORK AND REINSTALLED FOLLOWING COMPLETION. APPROX. 26 LOCATIONS.
- EXISTING BASEBOARDS TO BE TEMPORARILY REMOVED AND STORED FOR THE DURATION OF WORK AND REINSTALLED FOLLOWING COMPLETION.
- EXISTING STAIR RUNNER TO BE REMOVED AND REPLACED WITH NEW CARPET RUNNER.
- TRIP HAZARD TO BE FIXED.
- WEATHER CARPET TO BE INSTALLED FOR SEPTEMBER 2018.
- EXISTING CARPET TO BE REMOVED AND LEAVE TILES TO BE EXPOSED.

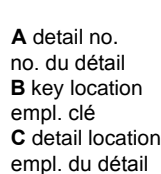
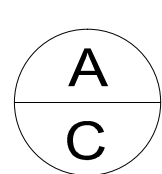
NOTES

- DETAILS SHOWN ARE FOR GENERIC REPRESENTATIONAL PURPOSES ONLY AND SHOULD BE VERIFIED ON SITE PRIOR TO BEGINNING OF WORK.

- THE STATE OF EACH INDIVIDUAL TRANSITION DETAIL IN AREAS OF WORK MAY VARY.

KEY PLAN
PLAN-REPIÈRE

06		
05	REVISED TENDER SUBMISSION	2017/10
04	REVISED TENDER SUBMISSION	2017/08
03	TENDER SUBMISSION	2017/05
02	DRAFT SUBMISSION	2017/04
01	PRELIM DRAFT SUBMISSION	2017/03
revision		date



project / projet

EAST BLOCK
CARPET REPLACEMENT

111 WELLINGTON STREET, OTTAWA, ON

drawing / dessin

TYPICAL REFERENCE
DETAILS

designed	M. LEGINES	conçu
date	2017/10	
drawn	M. LEGINES	dessiné
date	2017/10	
reviewed	C.LUMSDON	examiné
date	2017/10	
approved		approuvé
date		
tender		soumission
Project Manager		Administrateur du projet
project no.		no. du projet
	R.011972.028	
drawing no.		no. du dessin
	A5 of 5	