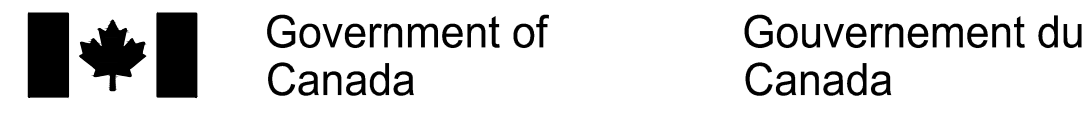


ISSUED FOR TENDER  
DECEMBER 11 2017



# SITE INFRASTRUCTURE PROJECT B

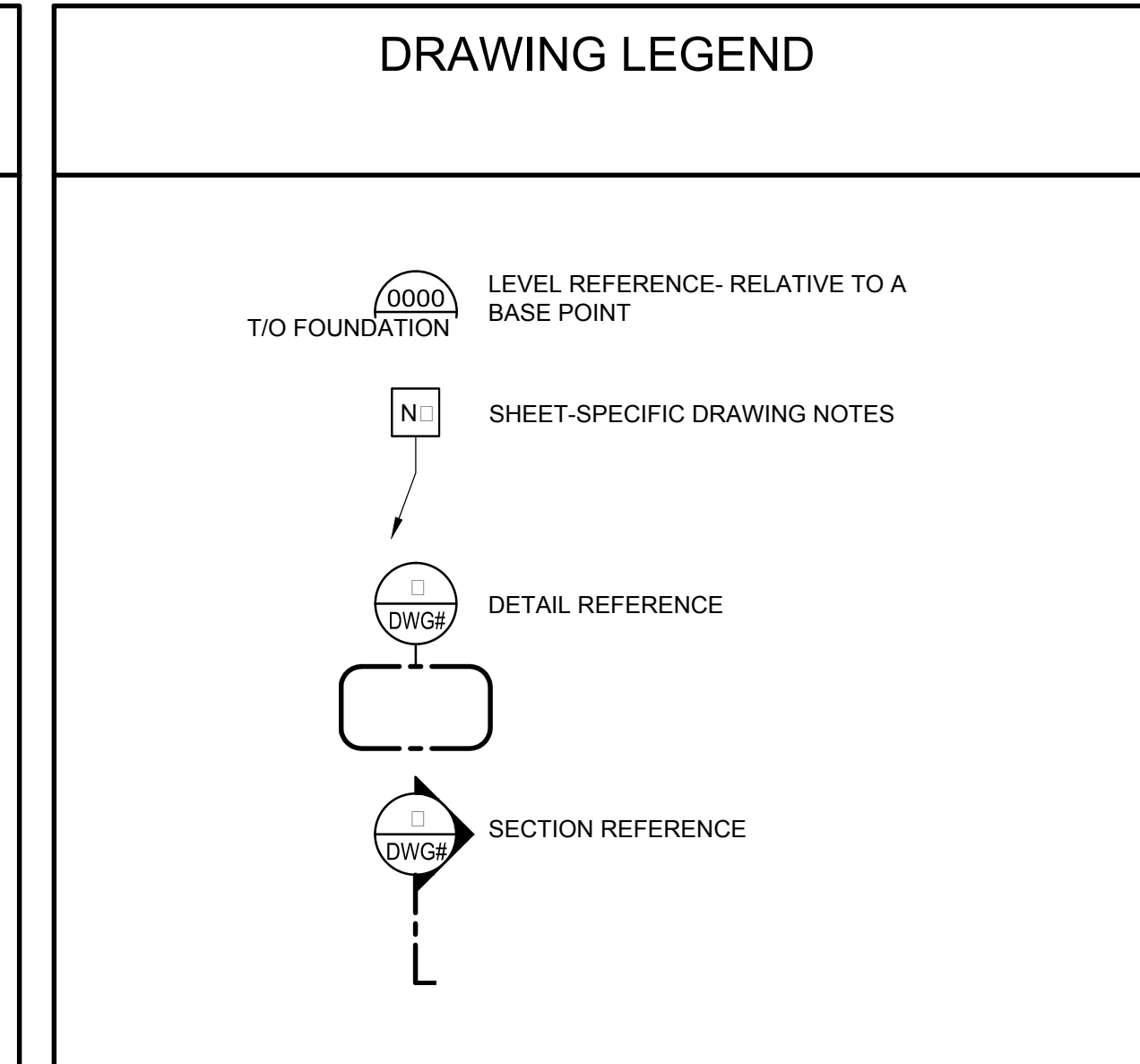
OTTAWA ONTARIO



PETER J. KINDREE  
ARCHITECT

79 Hinton Ave. N. Ottawa K1Y 0Z7  
79 Ave. Hinton N. 613-860-1530

DRAWING LIST	
ARCHITECTURAL	
A001	COVERPAGE: DRAWING LIST □ LEGEND
A101	ARCHITECTURAL DETAILS
ELECTRICAL	
E1	ELECTRICAL COMMUNICATIONS NEW WORK
CIVIL	
C601	NOTES AND DETAILS: COMMUNICATIONS DUCTWORK
C602	SITE SERVICING: COMMUNICATIONS DUCTWORK
C603	SITE SERVICING: COMMUNICATIONS DUCTWORK
C604	SITE SERVICING: COMMUNICATIONS DUCTWORK
C605	SITE SERVICING: COMMUNICATIONS DUCTWORK
C606	SITE SERVICING: COMMUNICATIONS DUCTWORK
C607	SITE SERVICING: COMMUNICATIONS DUCTWORK
C608	SITE SERVICING: COMMUNICATIONS DUCTWORK



IT IS THE RESPONSIBILITY OF THE APPROPRIATE CONTRACTOR TO CHECK AND VERIFY ALL DIMENSIONS ON SITE. ALL CONTRACTORS MUST COMPLY WITH ALL PERTINENT CODES AND BYLAWS. DO NOT SCALE DRAWINGS. THIS DRAWING MAY NOT BE USED FOR CONSTRUCTION UNTIL SIGNED. COPYRIGHT RESERVED.

IL APPARTIENT À L'ENTREPRENEUR CONCERNÉ D'EXAMINER ET DE VÉRIFIER TOUTES LES DIMENSIONS SUR LE CHANTIER. TOUS LES ENTREPRENEURS DOIVENT SE CONFORMER AUX CODES ET RÈGLEMENTS PERTINENTS. NE PAS RELEVÉR DE DIMENSIONS À L'ÉCHELLE SUR LES DESSINS. LE PRÉSENT DESSIN NE PEUT ÊTRE UTILISÉ SUR LE CHANTIER À MOINS QU'IL NE SOIT SIGNÉ. TOUS DROITS RÉSERVÉS.

revisions	description	date
1	ISSUED FOR TENDER	2017/12/11

A	B	C
no. du détail	location drawing no.	drawing no.
sur dessin	sur dessin	dessin no.

project projet

## SITE INFRASTRUCTURE PROJECT B

drawing dessin

COVERPAGE □  
DRAWING LIST □  
LEGEND □

Designed By	Conçu par
Date	Date
Drawn By	Dessiné par
Date	Date
Reviewed By	Examiné par
Date	Date
Approved By	Approuvé par
Date	Date
Tender	Soumission
Project Manager	Administrateur de projets
Project no.	No. du projet
	7218202
Drawing no.	No. du dessin
	A001

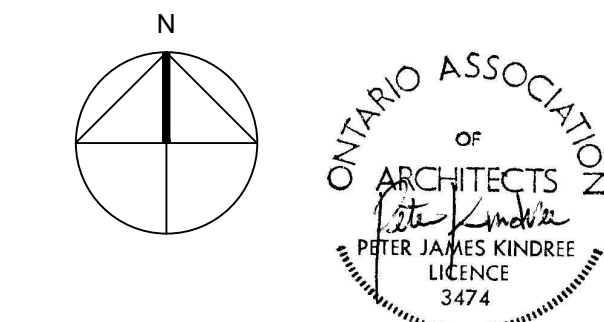
C

GENERAL NOTES: A101

A. PROVIDE SHOP DRAWINGS FOR THE VEHICULAR BARRIER STAMPED BY AN ENGINEER LICENSED IN THE PROVINCE OF ONTARIO SHOWING CONNECTION DETAILS INCLUDING ANCHORAGE INTO EXISTING CONCRETE. PROVIDE POST-INSTALLATION REVIEW BY SAME ENGINEER TO CONFIRM THAT INSTALLATION HAS BEEN INSTALLED IN COMPLIANCE WITH REVIEWED SHOP DRAWINGS.

DRAWING NOTES: A101

1. SECURE PULL BOX. REFER TO ELECTRICAL ATTACHMENT TO EXISTING HORIZONTAL WALL GIRTS. PROVIDE SHOP DRAWINGS STAMPED BY AN ENGINEER LICENSED IN THE PROVINCE OF ONTARIO FOR THE STRUCTURAL ATTACHMENT OF THE PULLBOXES TO THE EXISTING BUILDING THAT ALSO DEMONSTRATE THE PRESERVATION OF THE CONTINUITY OF THE EXTERIOR BUILDING ENVELOPE AS WELL AS AS THE CONTINUITY OF THE VAPOUR BARRIER PROVIDED BY THE INTERIOR LINER PANEL. AT THE LOCATIONS WHERE THE PULLBOXES ARE CONNECTED TO THE BUILDING, PROVIDE POST-INSTALLATION REVIEW BY SAME ENGINEER TO CONFIRM THAT INSTALLATION HAS BEEN INSTALLED IN COMPLIANCE WITH REVIEWED SHOP DRAWINGS
2. PREFINISHED METAL COVER, MINIMUM 1.6MM THICK, FASTENED TO EXISTING CLADDING WITH TAMPER-PROOF FASTENERS.
3. CONDUIT BEHIND. REFER TO ELECTRICAL DRAWINGS.
4. EXISTING EXTERIOR WALL.
5. MANHOLE. REFER TO CIVIL DRAWINGS.
6. VEHICULAR BARRIER
7. 205X150 REMOVABLE HSS. GALVANI. ED.
8. VEHICULAR BARRIER STEEL POST. GALVANI. ED. SPACED TO ALLOW ANCHORING IN EXISTING SOUND CONCRETE SLAB.
9. VEHICULAR BARRIER BASE PLATE 300X300X6 mm. GALVANI. ED.
10. GALVANI. ED STEEL ANCHOR BOLT SET INTO EXISTING CONCRETE.
11. EXISTING SLAB TO REMAIN
12. REINSTATE CONCRETE SLAB. REFER TO CIVIL DRAWINGS.
13. BACKFILL AROUND MANHOLE. REFER TO CIVIL.
14. ASPHALT PAVEMENT. REFER TO CIVIL DRAWINGS.
15. PROVIDE SEALANT TO SEAL CONDUIT PENETRATION INTO EXISTING BUILDING.
16. PATCH/ MAKE GOOD. REPAIR EXISTING CONSTRUCTION AT THE PENETRATION. PROVIDE 2 HOUR FIRESTOPPING.
17. ALIGN NEW BARRIERS WITH EXISTING BARRIERS ON EITHER SIDE.
18. EXISTING SLAB EDGE AT EXCAVATION. VERIFY REQUIRED OFFSET TO ANCHORING IN SHOP DRAWINGS.
19. TO BE CONFIRMED BY DEPARTMENTAL REPRESENTATIVE.
20. LINE OF CONDUITS. REFER TO ELECTRICAL DRAWINGS.
21. MATCH HEIGHT OF EXISTING BARRIERS ON EITHER SIDE
22. NEARBY BEAM UNDER WHICH CONDUIT MUST PASS.



IT IS THE RESPONSIBILITY OF THE APPROPRIATE CONTRACTOR TO CHECK AND VERIFY ALL DIMENSIONS ON SITE. ALL CONTRACTORS MUST COMPLY WITH ALL PERTINENT CODES AND BYLAWS. DO NOT SCALE DRAWINGS. THIS DRAWING MAY NOT BE USED FOR CONSTRUCTION UNTIL SIGNED. COPYRIGHT RESERVED.

IL APPARTIENT À L'ENTREPRENEUR CONCERNÉ D'EXAMINER ET DE VÉRIFIER TOUTES LES DIMENSIONS SUR LE CHANTIER. TOUS LES ENTREPRENEURS DOIVENT SE CONFORMER AUX CODES ET RÈGLEMENTS PERTINENTS. NE PAS RELEVÉR DE DIMENSIONS À L'ÉCHELLE SUR LES DESSINS. LE PRÉSENT DESSIN NE PEUT ÊTRE UTILISÉ SUR LE CHANTIER À MOINS QU'IL NE SOIT SIGNÉ. TOUS DROITS RÉSERVÉS.

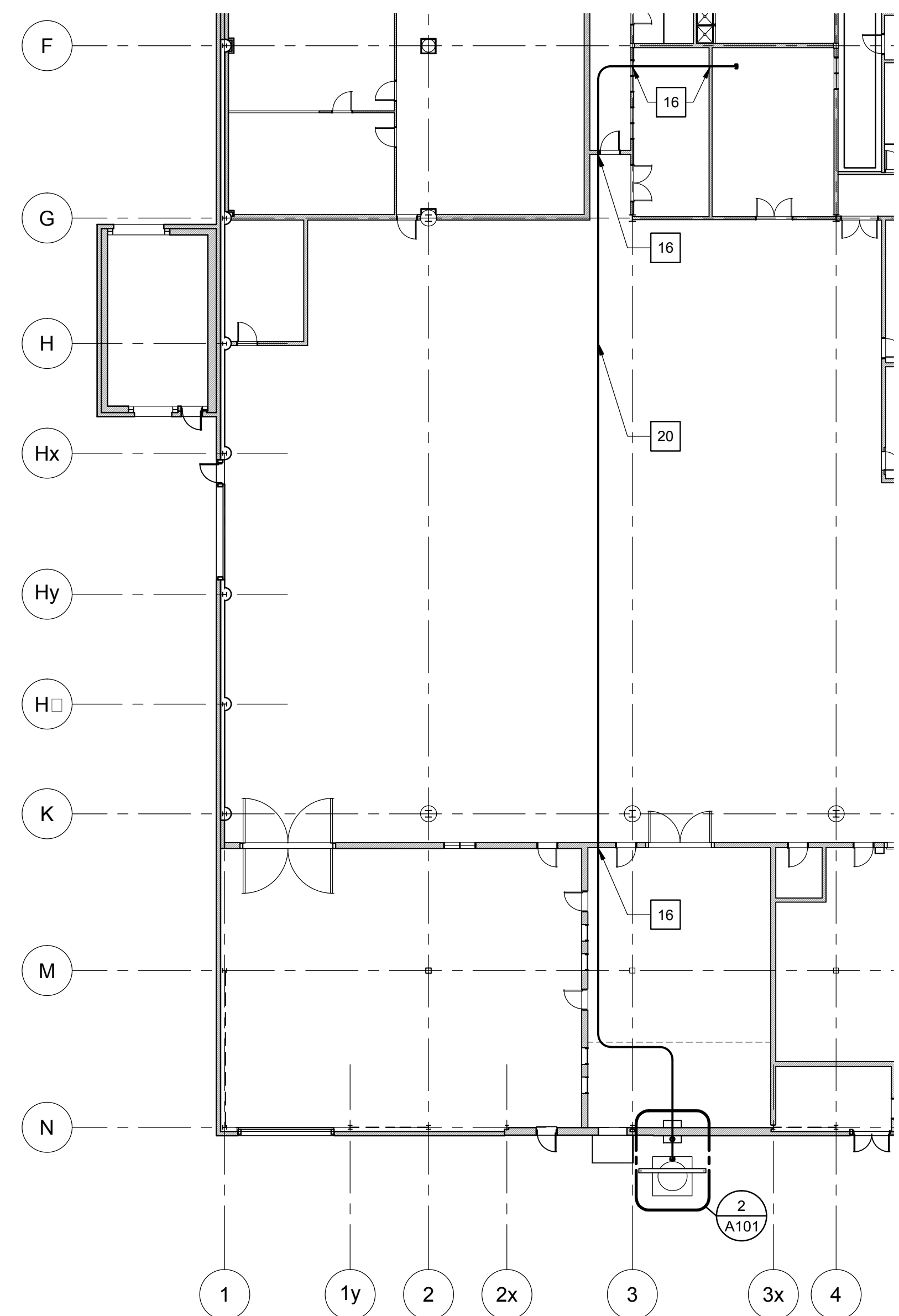
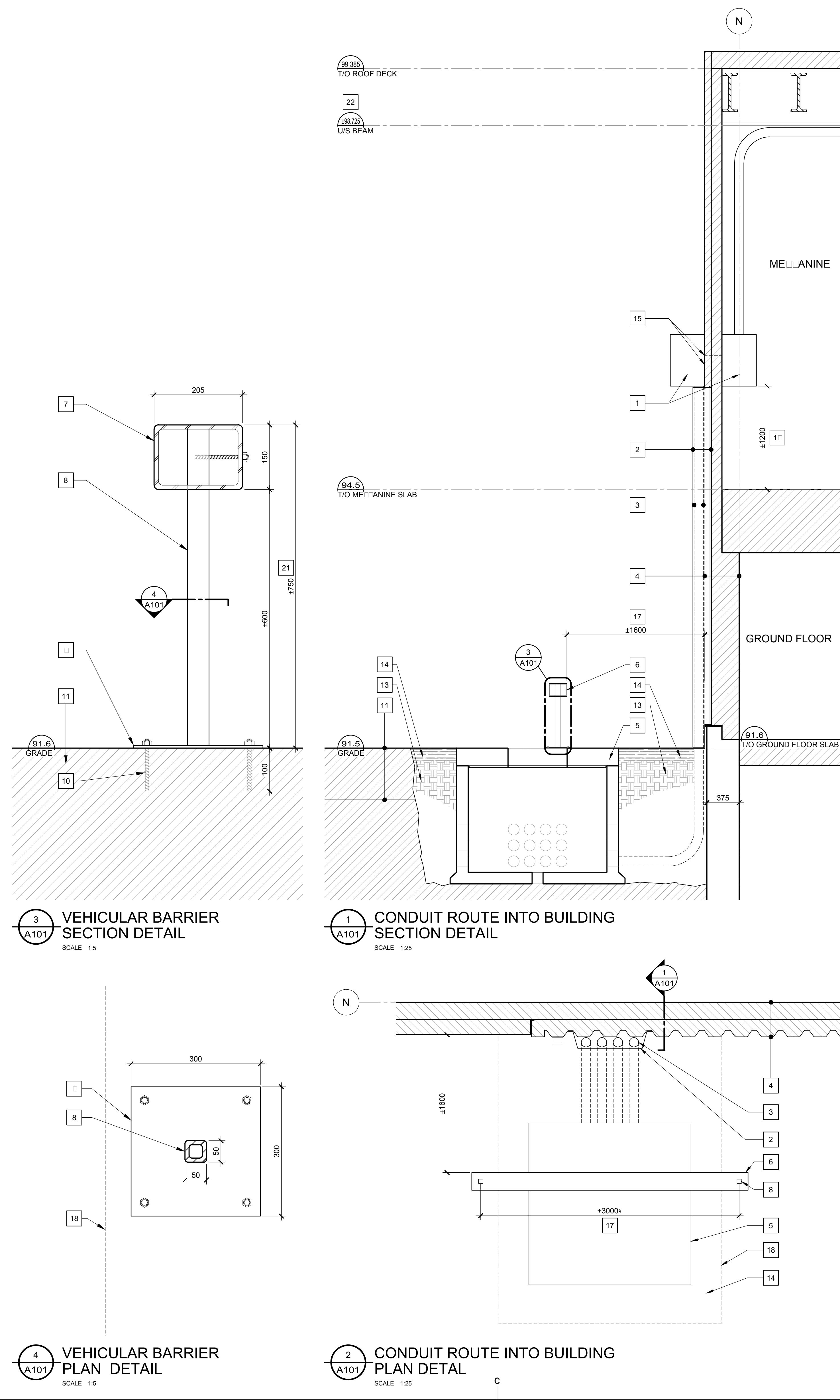
revisions	description	date
2	ISSUED FOR TENDER	2017/12/11
1	ISSUED FOR 99% REVIEW	2017/10/13

A	no. du détail	A
B	location drawing no. sur dessin no.	B
C	C drawing no. dessin no.	C

project: SITE INFRASTRUCTURE PROJECT B

drawing: ARCHITECTURAL DETAILS

Designed By	PK/RR	Conçu par	
Date	DEC 2017	(yyyy/mm/dd)	
Drawn By	RR	Dessiné par	
Date	DEC 2017	(yyyy/mm/dd)	
Reviewed By	PK	Examiné par	
Date	DEC 2017	(yyyy/mm/dd)	
Approved By	PK	Approuvé par	
Date	DEC 2017	(yyyy/mm/dd)	
Tender		Soumission	
Project Manager	JC	Administrateur de projets	
Project no.		No. du projet	7218202
Drawing no.		No. du dessin	A101





**GENERAL NOTES AND SPECIFICATIONS:**

- COORDINATE AND SCHEDULE ALL WORK WITH OTHER TRADES AND CONTRACTORS.
- DETERMINE THE EXACT LOCATION, SIZE, MATERIAL AND ELEVATION OF ALL EXISTING UTILITIES PRIOR TO COMMENCING CONSTRUCTION. PROTECT AND ASSUME RESPONSIBILITY FOR ALL EXISTING UTILITIES WHETHER OR NOT SHOWN ON THIS DRAWING.
- OBTAIN ALL NECESSARY PERMITS AND APPROVALS BEFORE COMMENCING CONSTRUCTION.
- BEFORE COMMENCING CONSTRUCTION OBTAIN AND PROVIDE PROOF OF COMPREHENSIVE, ALL RISK AND OPERATIONAL LIABILITY INSURANCE FOR \$5,000,000.00. INSURANCE POLICY TO NAME OWNERS, ENGINEERS AND ARCHITECTS AS CO-INSURED.
- RESTORE ALL DISTURBED AREAS ON-SITE AND OFF-SITE, INCLUDING TRENCHES AND SURFACES ON PUBLIC ROAD ALLOWANCES TO RESTORE CONDITIONS OR BETTER TO THE SATISFACTION OF THE DEPARTMENTAL REPRESENTATIVE.
- REMOVE FROM SITE ALL EXCESS EXCAVATED MATERIAL, ORGANIC MATERIAL AND DEBRIS UNLESS OTHERWISE INSTRUCTED BY ENGINEER. EXCAVATE AND REMOVE FROM SITE ANY CONTAMINATED MATERIAL. ALL CONTAMINATED MATERIAL SHALL BE DISPOSED OF AT A LICENSED LANDFILL FACILITY.
- ALL ELEVATIONS ARE GEODETIC.
- THE DEPARTMENTAL REPRESENTATIVE WILL ENGAGE A GEOTECHNICAL CONSULTANT AS REQUIRED. THE GEOTECHNICAL CONSULTANT IS TO REVIEW ON-SITE CONDITIONS AFTER EXCAVATION AND PRIOR TO THE PLACEMENT OF THE GRANULAR MATERIAL AND PROVIDE CONSTRUCTION RECOMMENDATIONS.
- ALL SAND USED FOR BEDDING AND COVER SHALL MEET OR EXCEED THE SIEVE SIZE AND PERCENTAGE OF MATERIAL PASSING AS LISTED IN THE FOLLOWING TABLE:

SIEVE SIZE (mm)	PERCENTAGE OF MATERIAL PASSING
4.75	100.0
2.36	99.9
1.18	99.8
0.60	98.3
0.30	71.9
0.150	24.5
0.075	5.9

- GRANULAR A PIPE BEDDING AND COVER SHALL CONFORM TO OPSS 1010. A SAMPLE IS TO BE PROVIDED BY THE SUPPLIER FOR LABORATORY TESTING BY THE GEOTECHNICAL CONSULTANT.
- GRANULAR A AND GRANULAR B TYPE II MATERIALS FOR ROADWAY REINSTATEMENT SHALL CONFORM TO OPSS 1010.
- SAND BEDDING AND COVER SHALL BE COMPACTED TO 95% OF STANDARD PROCTOR MAXIMUM DRY DENSITY.
- GRANULAR A FOR BEDDING AND COVER SHALL BE COMPACTED TO 95% OF STANDARD PROCTOR MAXIMUM DRY DENSITY.
- GRANULAR A AND GRANULAR B TYPE II FOR ROADWAYS SHALL BE COMPACTED TO 98% OF STANDARD PROCTOR MAXIMUM DRY DENSITY.
- ASPHALT FOR ROADWAY REINSTATEMENT SHALL BE PG 58-34 TYPE B, SUPERPAVE 19.0 FOR BASE COURSE AND SUPERPAVE 12.5 FOR WEAR COURSE.

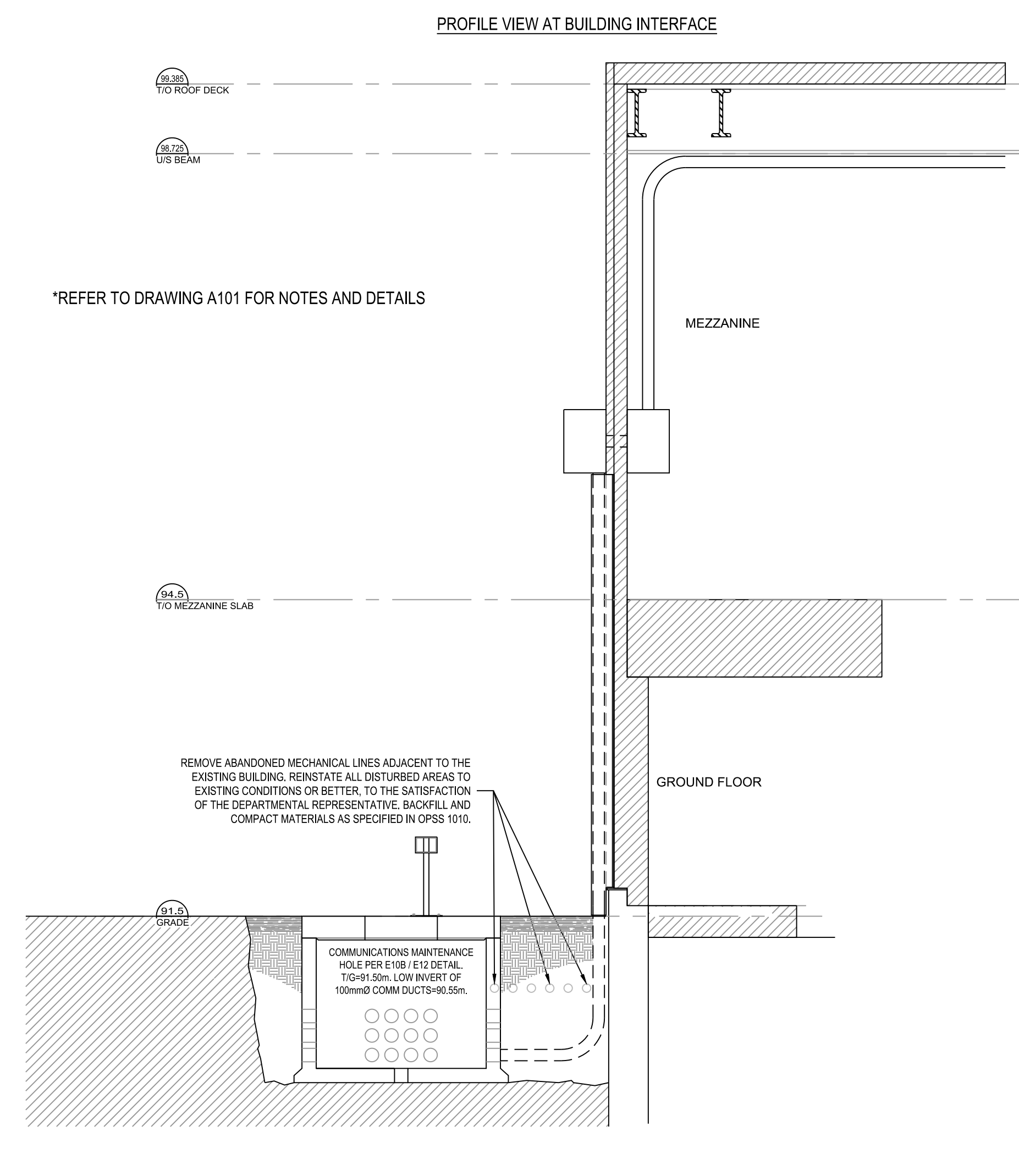
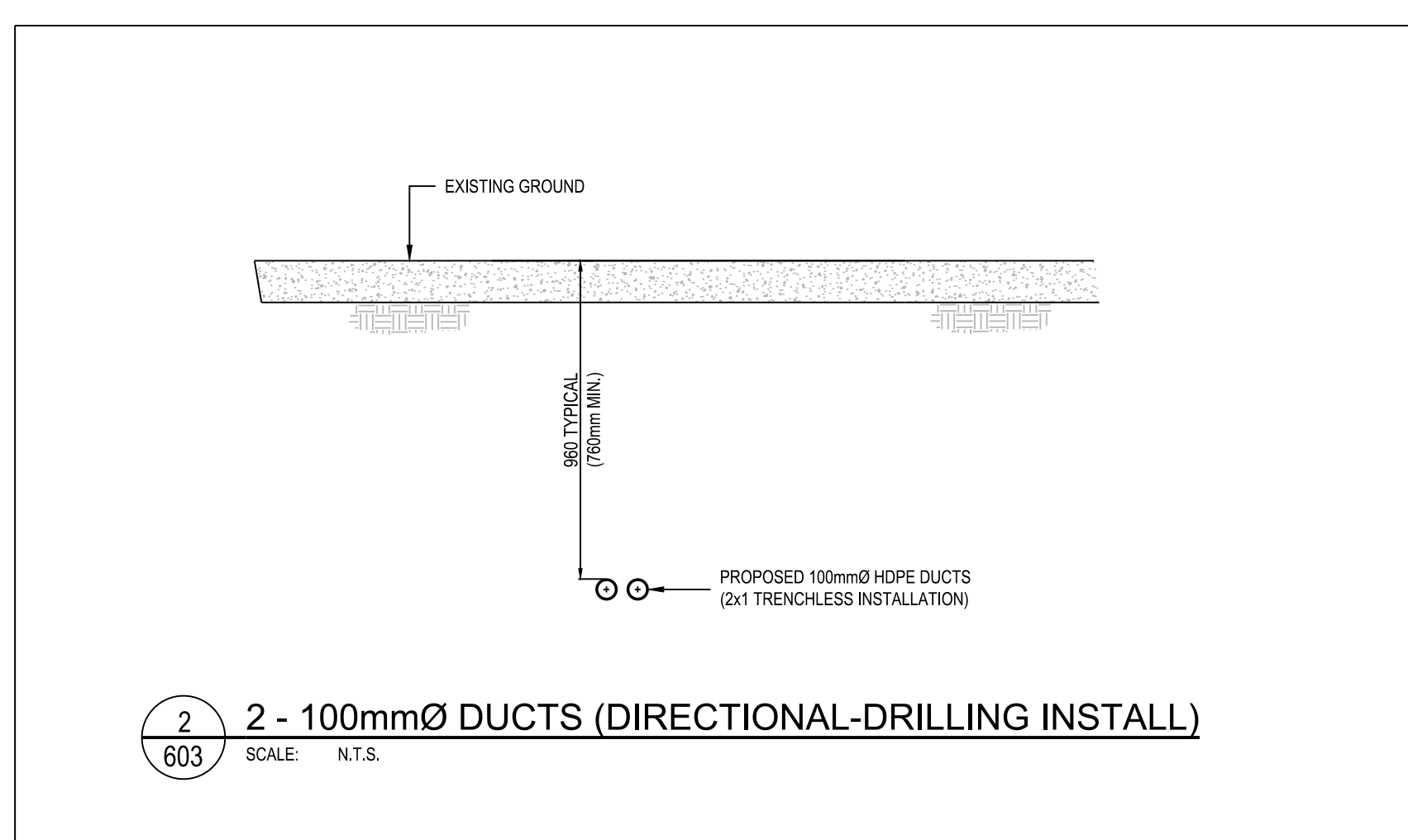
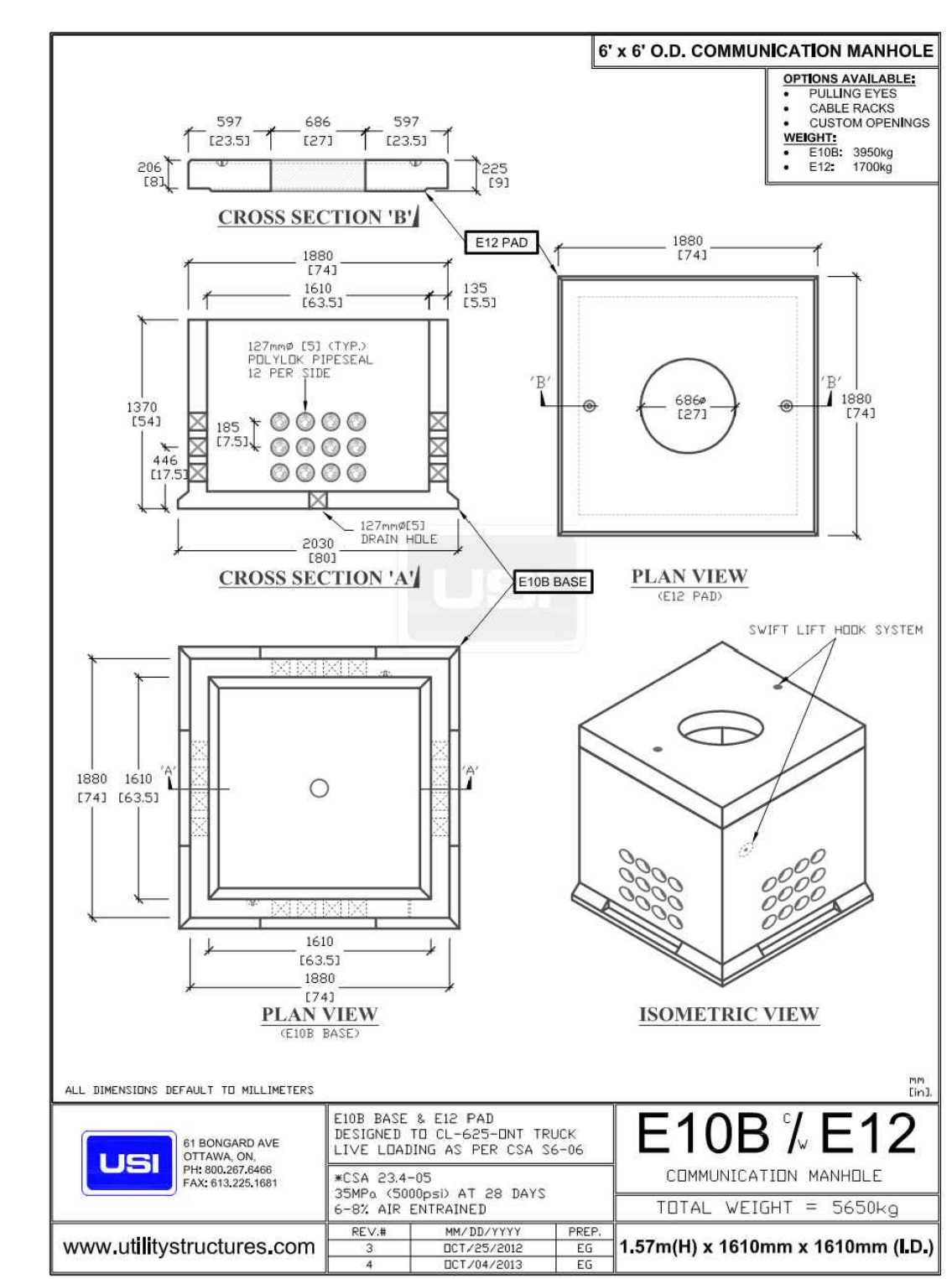
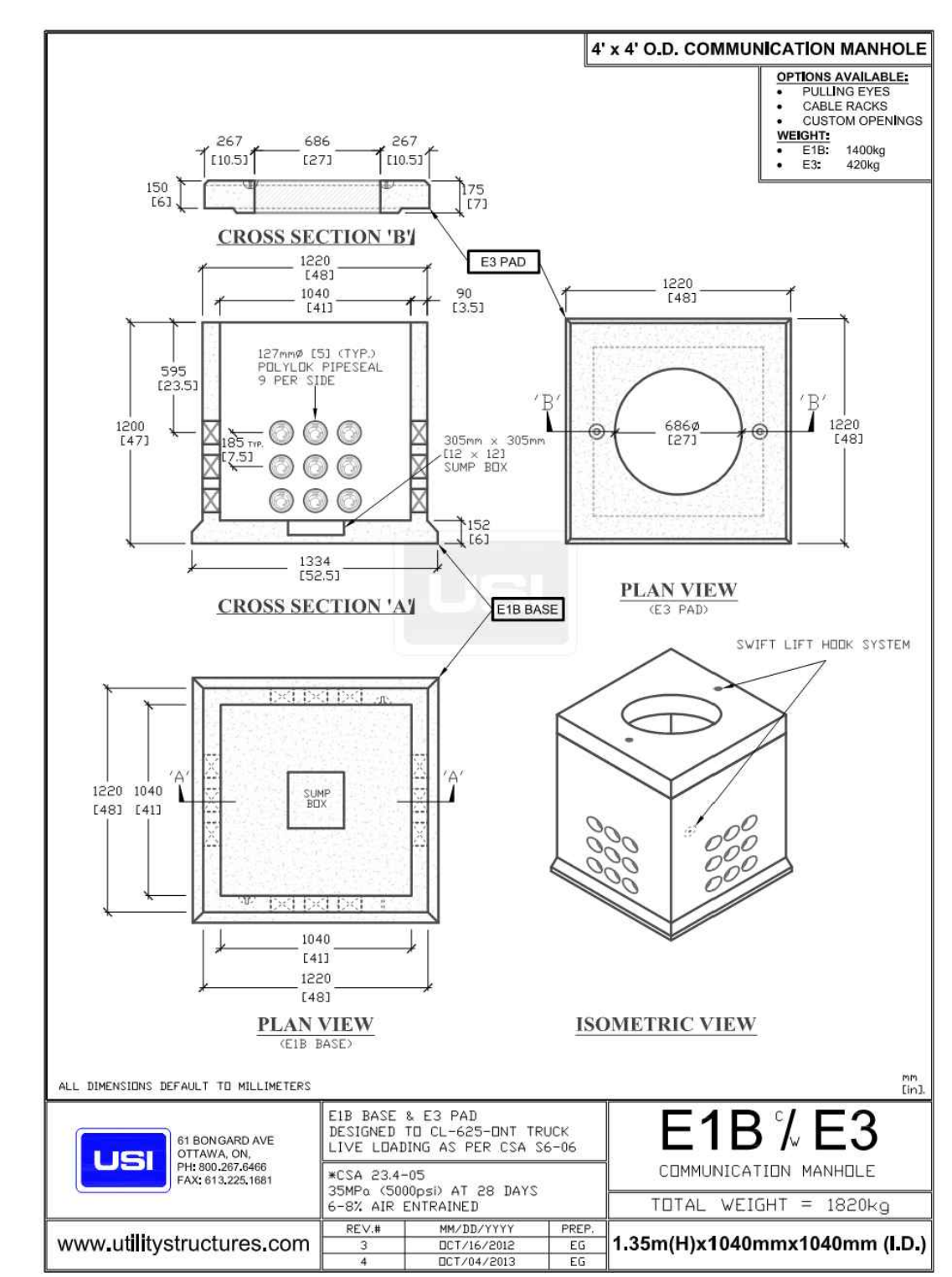
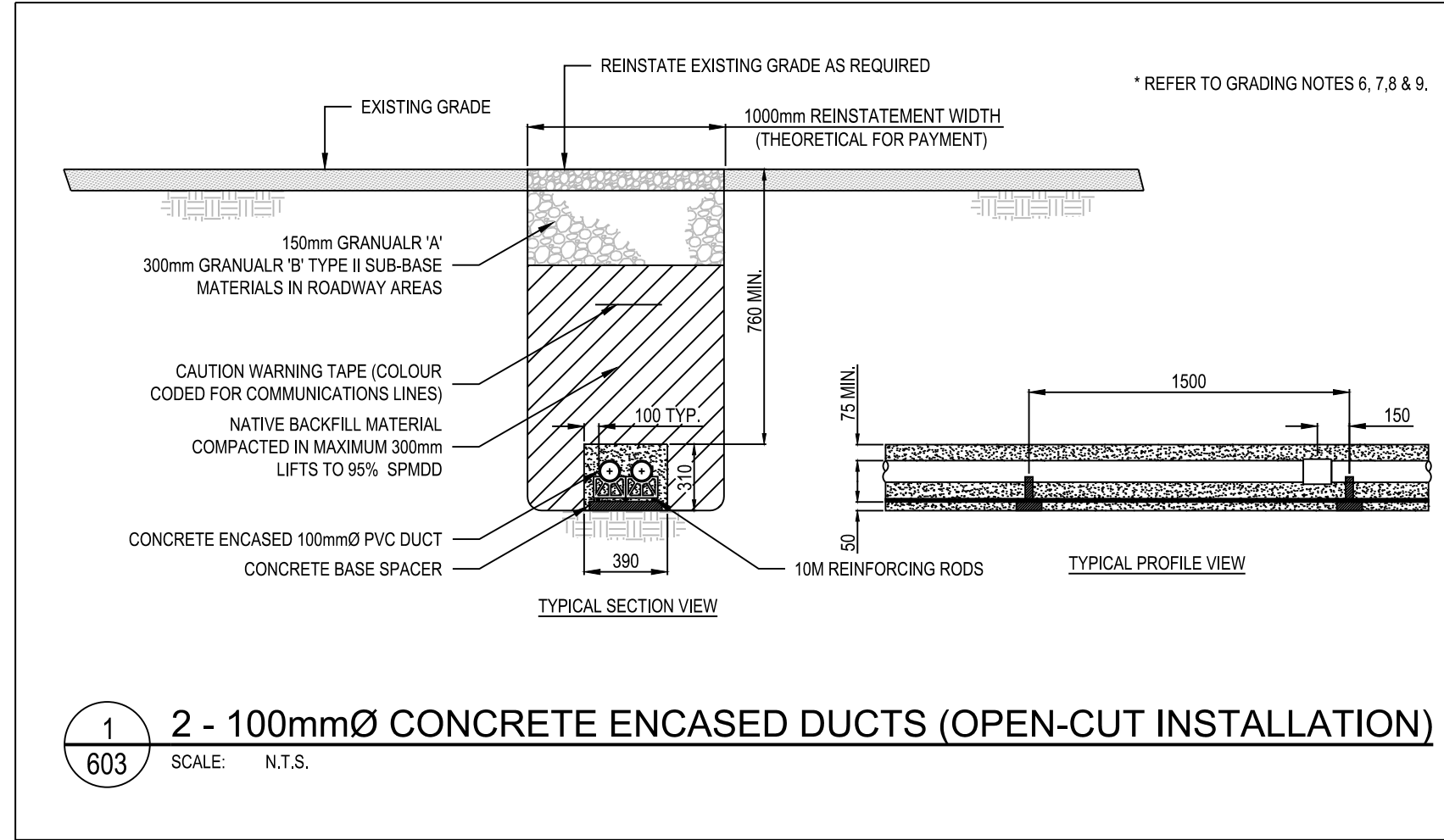
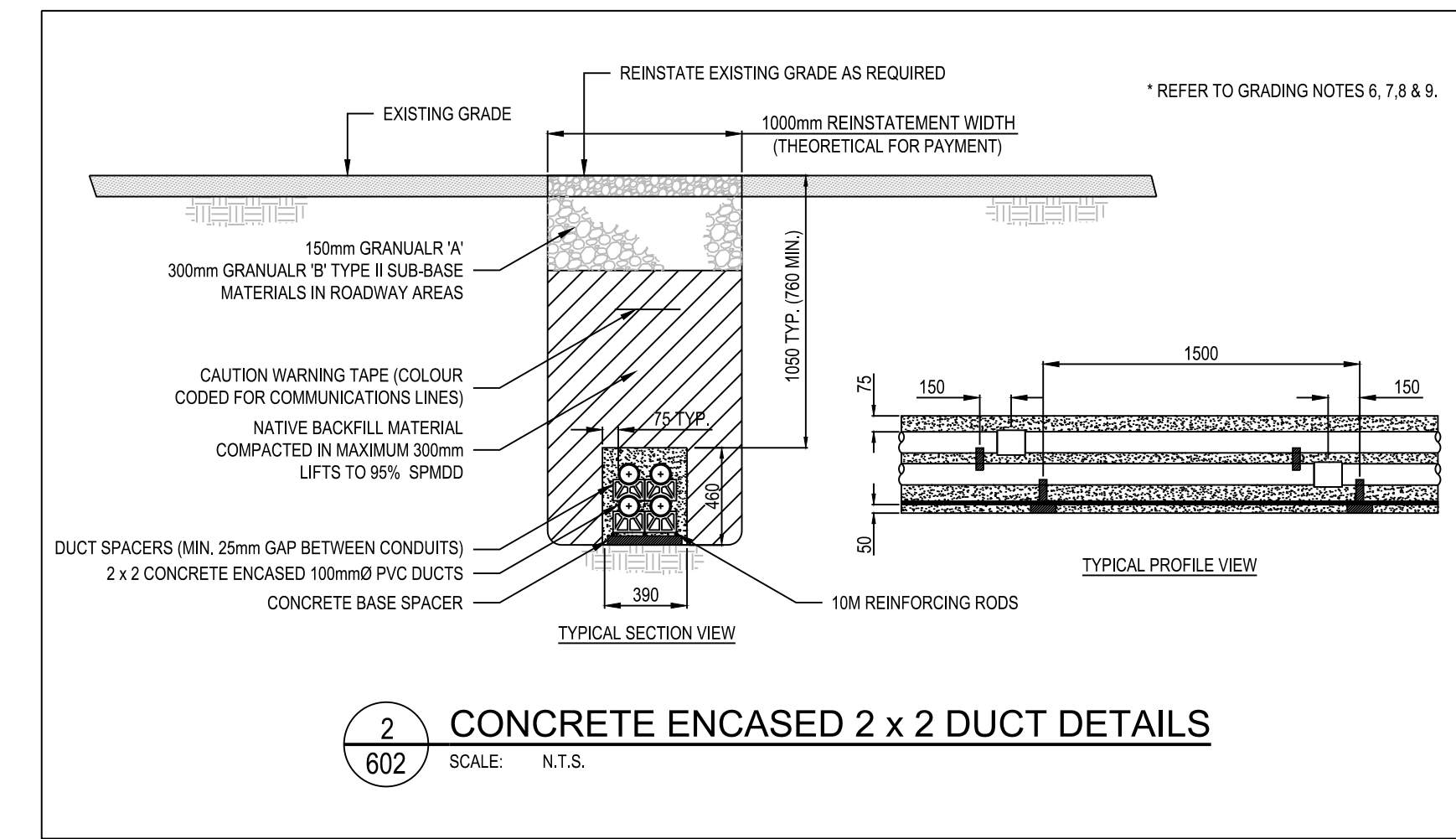
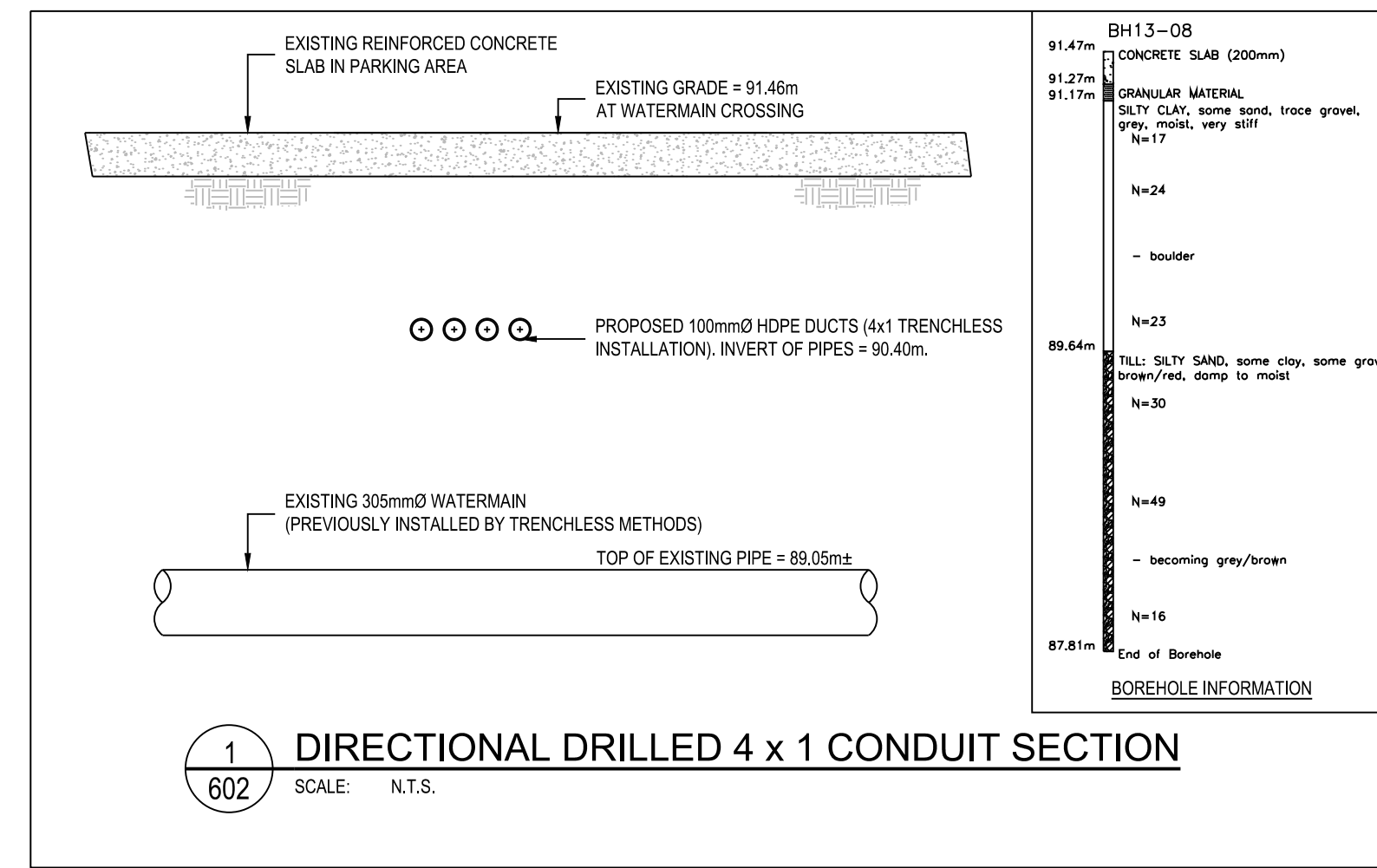
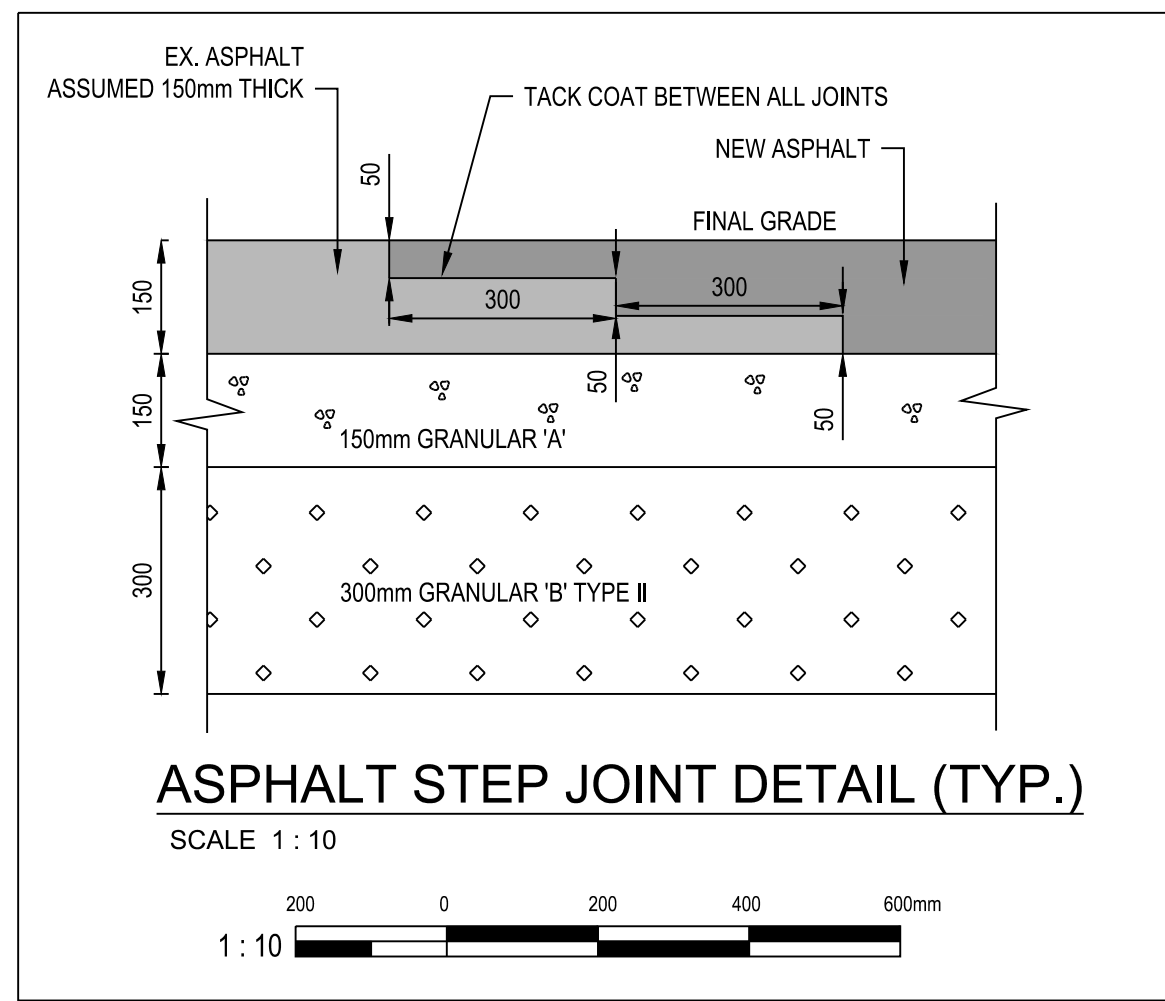
**GRADING NOTES:**

- EXPOSED SUBGRADE IN PROPOSED PAVED AREAS SHOULD BE PROOF ROLLED WITH A LARGE STEEL DRUM ROLLER AND ANY SOFT AREAS SHOULD BE PROOF ROLLED SHOULD BE SUBEXCAVATED AND REPLACED WITH SUITABLE MATERIAL THAT IS FROST COMPATIBLE WITH THE EXISTING SOILS.
- THE GRANULAR BASE SHOULD BE COMPACTED TO AT LEAST 98% OF THE STANDARD PROCTOR MAXIMUM DRY DENSITY VALUE. ANY ADDITIONAL GRANULAR FILL USED BELOW THE PROPOSED ROADWAY STRUCTURE SHOULD BE COMPACTED TO AT LEAST 95% OF THE STANDARD PROCTOR MAXIMUM DRY DENSITY VALUE.
- GRADE AND/OR FILL BEHIND PROPOSED CURBS AND BETWEEN BUILDINGS AND CURBS, WHERE REQUIRED TO PROVIDE POSITIVE DRAINAGE TOWARDS EXISTING DRAINAGE STRUCTURES.
- PROVIDE A MINIMUM OF 2% GRADE UNLESS OTHERWISE NOTED.
- ALL GRADES BY CURBS ARE EDGE OF PAVEMENT GRADES UNLESS OTHERWISE INDICATED.
- PAYMENT FOR REINSTATEMENT OF OPEN CUT TRENCHING TO BE BASED ON A THEORETICAL TRENCH WIDTH OF 1000mm.
- PAYMENT FOR REINSTATEMENT AROUND STRUCTURES TO BE BASED ON THE ACTUAL AREA OF REINSTATEMENT.
- REINSTATEMENT OF LANDSCAPED AREAS TO BE 100mm TOPSOIL AND SEEDING.
- REINSTATEMENT OF GRAVEL SHOULDERS TO BE 150mm GRANULAR 'A' ON 300mm GRANULAR 'B' TYPE II, COMPACTED TO 95% OF STANDARD PROCTOR MAXIMUM DRY DENSITY.

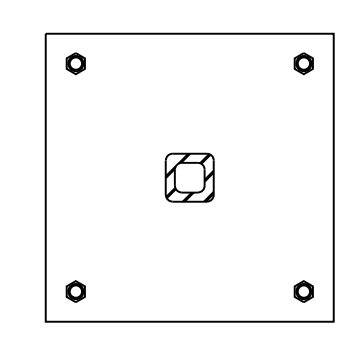
**EROSION AND SEDIMENT CONTROL NOTES :**

THE CONTRACTOR SHALL IMPLEMENT BEST MANAGEMENT PRACTICES, TO PROVIDE FOR PROTECTION OF THE AREA DRAINAGE SYSTEM AND THE RECEIVING WATERCOURSE. DURING CONSTRUCTION ACTIVITIES, THE CONTRACTOR ACKNOWLEDGES THAT FAILURE TO IMPLEMENT APPROPRIATE EROSION AND SEDIMENT CONTROL MEASURES MAY BE SUBJECT TO PENALTIES IMPOSED BY ANY APPLICABLE REGULATORY AGENCY.

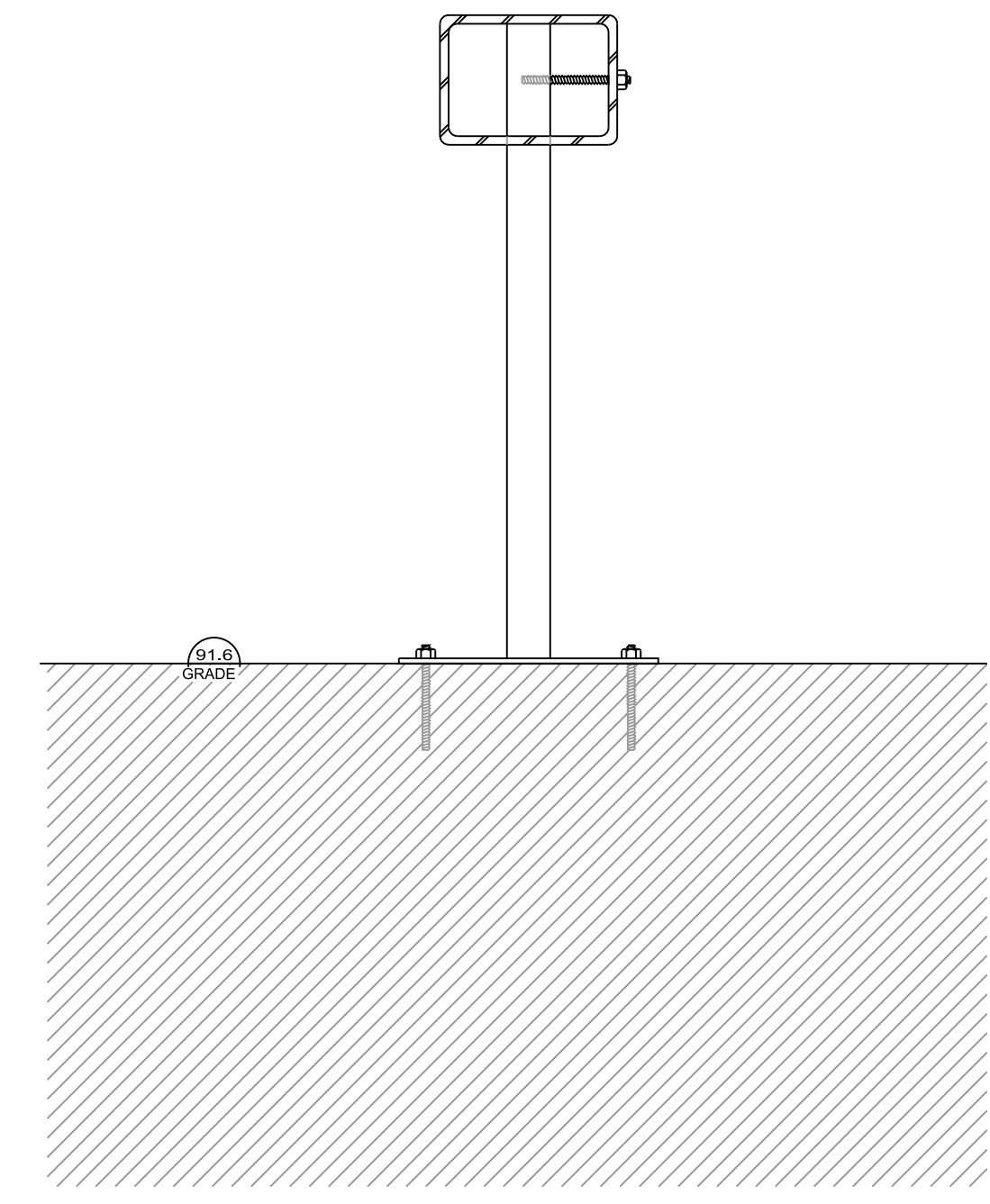
- ALL EROSION AND SEDIMENT CONTROLS ARE TO BE INSTALLED TO THE SATISFACTION OF THE DEPARTMENTAL REPRESENTATIVE. THEY ARE TO BE APPROPRIATE TO THE SITE CONDITIONS, PRIOR TO UNDERTAKING ANY SITE ALTERATIONS (FILLING, GRADING, REMOVAL OF VEGETATION, ETC.) AND DURING ALL PHASES OF SITE PREPARATION AND CONSTRUCTION. THESE PRACTICES ARE TO BE IMPLEMENTED IN ACCORDANCE WITH THE CURRENT BEST MANAGEMENT PRACTICES FOR EROSION AND SEDIMENT CONTROL AND SHOULD INCLUDE AS A MINIMUM THOSE MEASURES INDICATED ON THE PLAN.
- EROSION AND SEDIMENT CONTROL MEASURES WILL BE IMPLEMENTED DURING CONSTRUCTION IN ACCORDANCE WITH THE "GUIDELINES ON EROSION AND SEDIMENT CONTROL FOR URBAN CONSTRUCTION SITES" (GOVERNMENT OF ONTARIO, MAY 1987). THE CONTRACTOR SHALL BE SOLELY RESPONSIBLE FOR MEETING ALL REGULATORY AGENCY REQUIREMENTS.
- TO PREVENT SURFACE EROSION FROM ENTERING ANY STORM SEWER SYSTEM DURING CONSTRUCTION, FILTER CLOTH WILL BE PLACED UNDER GRATES OF NEARBY CATCHBASINS AND STRUCTURES. A LIGHT DUTY SILT FENCE BARRIER WILL ALSO BE INSTALLED AROUND THE CONSTRUCTION AREA (WHERE APPLICABLE). THESE CONTROL MEASURES WILL REMAIN IN PLACE UNTIL CONSTRUCTION IS COMPLETE.
- TO LIMIT EROSION, MINIMIZE THE AMOUNT OF EXPOSED SOILS AT ANY GIVEN TIME. RE-VEGETATE EXPOSED AREAS AND SLOPES AS SOON AS POSSIBLE AND PROTECT EXPOSED SLOPES WITH NATURAL OR SYNTHETIC MULCHES.
- FOR MATERIAL STOCKPILING: MINIMIZE THE AMOUNT OF EXPOSED MATERIALS AT ANY GIVEN TIME; APPLY TEMPORARY SEEDING, TARPS, COMPACTION AND/OR SURFACE ROUGHENING AS REQUIRED TO STABILIZE STOCKPILED MATERIALS THAT WILL NOT BE USED WITHIN 14 DAYS.
- THE SEDIMENT CONTROL MEASURES SHALL ONLY BE REMOVED WHEN, IN THE OPINION OF THE DEPARTMENTAL REPRESENTATIVE, THE MEASURES ARE NO LONGER REQUIRED. NO CONTROL MEASURES MAY BE PERMANENTLY REMOVED WITHOUT PRIOR AUTHORIZATION FROM THE DEPARTMENTAL REPRESENTATIVE.
- THE CONTRACTOR SHALL IMMEDIATELY REPORT TO THE DEPARTMENTAL REPRESENTATIVE ANY ACCIDENTAL DISCHARGES OF SEDIMENT MATERIAL INTO ANY STORM SEWER SYSTEM, APPROPRIATE RESPONSE MEASURES, INCLUDING ANY REPAIRS TO EXISTING CONTROL MEASURES OR THE IMPLEMENTATION OF ADDITIONAL CONTROL MEASURES, SHALL BE CARRIED OUT BY THE CONTRACTOR WITHOUT DELAY.
- THE CONTRACTOR ACKNOWLEDGES THAT FAILURE TO IMPLEMENT EROSION AND SEDIMENT CONTROL MEASURES MAY BE SUBJECT TO PENALTIES IMPOSED BY ANY APPLICABLE REGULATORY AGENCY.
- ROADWAYS ARE TO BE SWEEP AS REQUIRED OR AS DIRECTED BY THE DEPARTMENTAL REPRESENTATIVE.
- THE CONTRACTOR SHALL ENSURE PROPER DUST CONTROL IS PROVIDED WITH THE APPLICATION OF WATER (AND IF REQUIRED, CALCIUM CHLORIDE) DURING DRY PERIODS. MONITOR DUST LEVELS DURING SITE PREPARATION/EXCAVATION AND CONSTRUCTION ACTIVITIES, AND WHEN DUST LEVELS BECOME VISUALLY APPARENT SPRAY WATER TO MINIMIZE THE RELEASE OF DUST FROM GRAVEL, PAVED AREAS AND EXPOSED SOILS. USE CHEMICAL DUST SUPPRESSANTS ONLY WHERE NECESSARY ON PROBLEM AREAS.



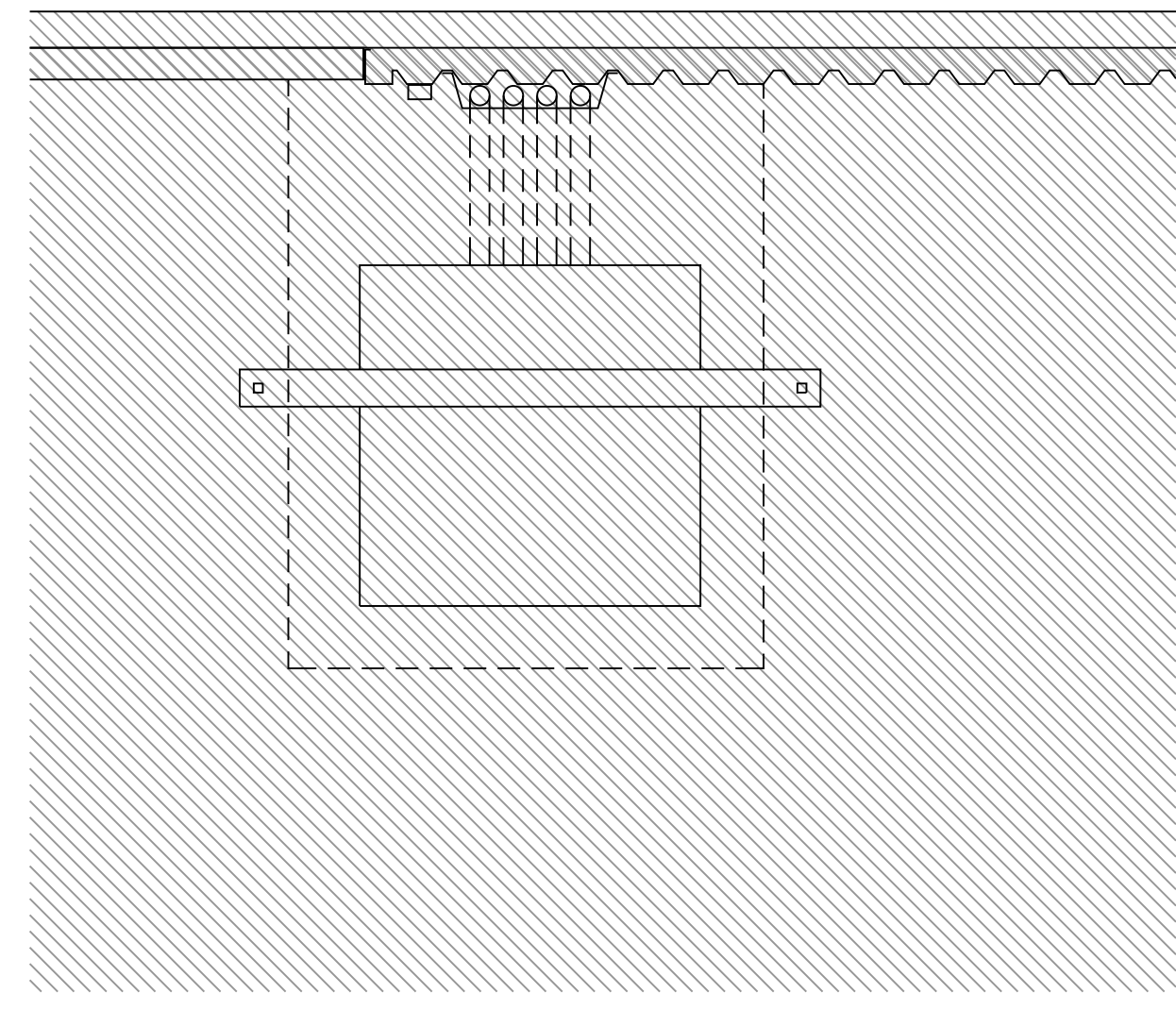
PLAN VIEW AT BOLLARD  
REFER TO DRAWING A101 FOR NOTES AND DETAILS



SECTION VIEW AT BOLLARD  
REFER TO DRAWING A101 FOR NOTES AND DETAILS



PLAN VIEW AT BUILDING INTERFACE  
REFER TO DRAWING A101 FOR NOTES AND DETAILS



Government of Canada / Gouvernement du Canada

**Canada**

**PETER J. KINDREE ARCHITECT**

79 Hinton Ave. N. Ottawa K1Y 0Z7

79 Ave. Hinton N. Ottawa, Ontario, Canada K2M 1P6

(613) 254-9643 (613) 254-5867

www.novatech-eng.com

**NOVATECH**  
Engineers, Planners & Landscape Architects  
Suite 200, 240 Michael Cowpland Drive  
Ottawa, Ontario, Canada K2M 1P6

Telephone: (613) 254-9643  
Facsimile: (613) 254-5867  
Website: www.novatech-eng.com



IT IS THE RESPONSIBILITY OF THE APPROPRIATE CONTRACTOR TO CHECK AND VERIFY ALL DIMENSIONS ON SITE. ALL CONTRACTORS MUST COMPLY WITH ALL PERTINENT CODES AND BYLAWS. DO NOT SCALE DRAWINGS. THIS DRAWING MAY NOT BE USED FOR CONSTRUCTION UNLESS SIGNED. COPYRIGHT RESERVED.

IL APPARTIEN À L'ENTREPRENEUR CONCERNÉ D'EXAMINER ET DE VÉRIFIER TOUTES LES DIMENSIONS SUR LE CHANTIER. TOUS LES ENTREPRENEURS DOIVENT SE CONFORMER AUX CODES ET RÈGLEMENTS PERTINENTS. NE PAS RELIEVER DE DIMENSIONS À L'ÉCHELLE SUR LES DESSINS. LE PRÉSENT DESSIN NE PEUT ÊTRE UTILISÉ SUR LE CHANTIER À MOINS QU'IL NE SOIT SIGNÉ. TOUS DROITS RÉSERVÉS.

1	Issued for Tender	2017/12/11
revisions	description	date
A	detail no. du detail	A
B	location drawing no. sur dessin no.	B
C	drawing no. dessin no.	C

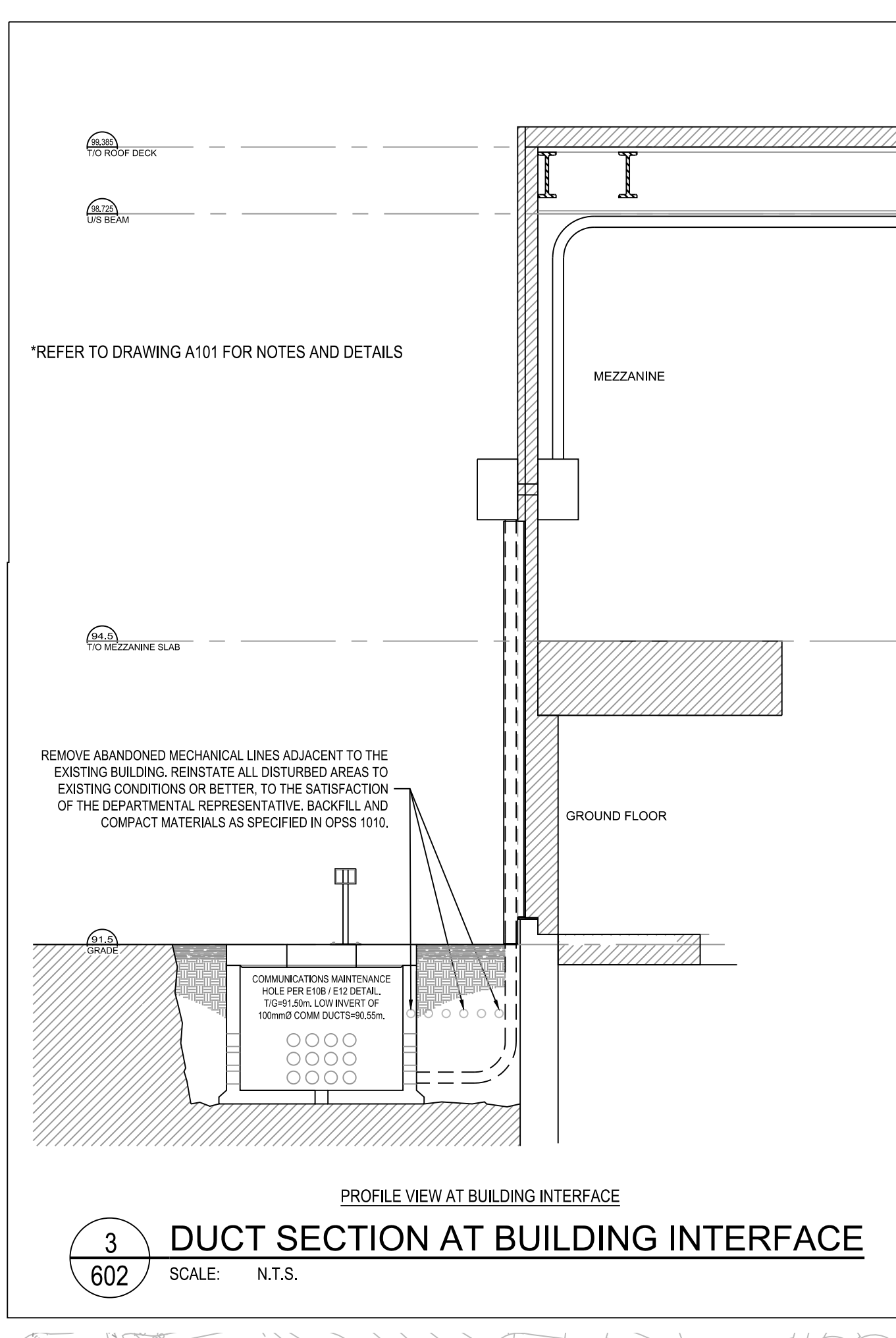
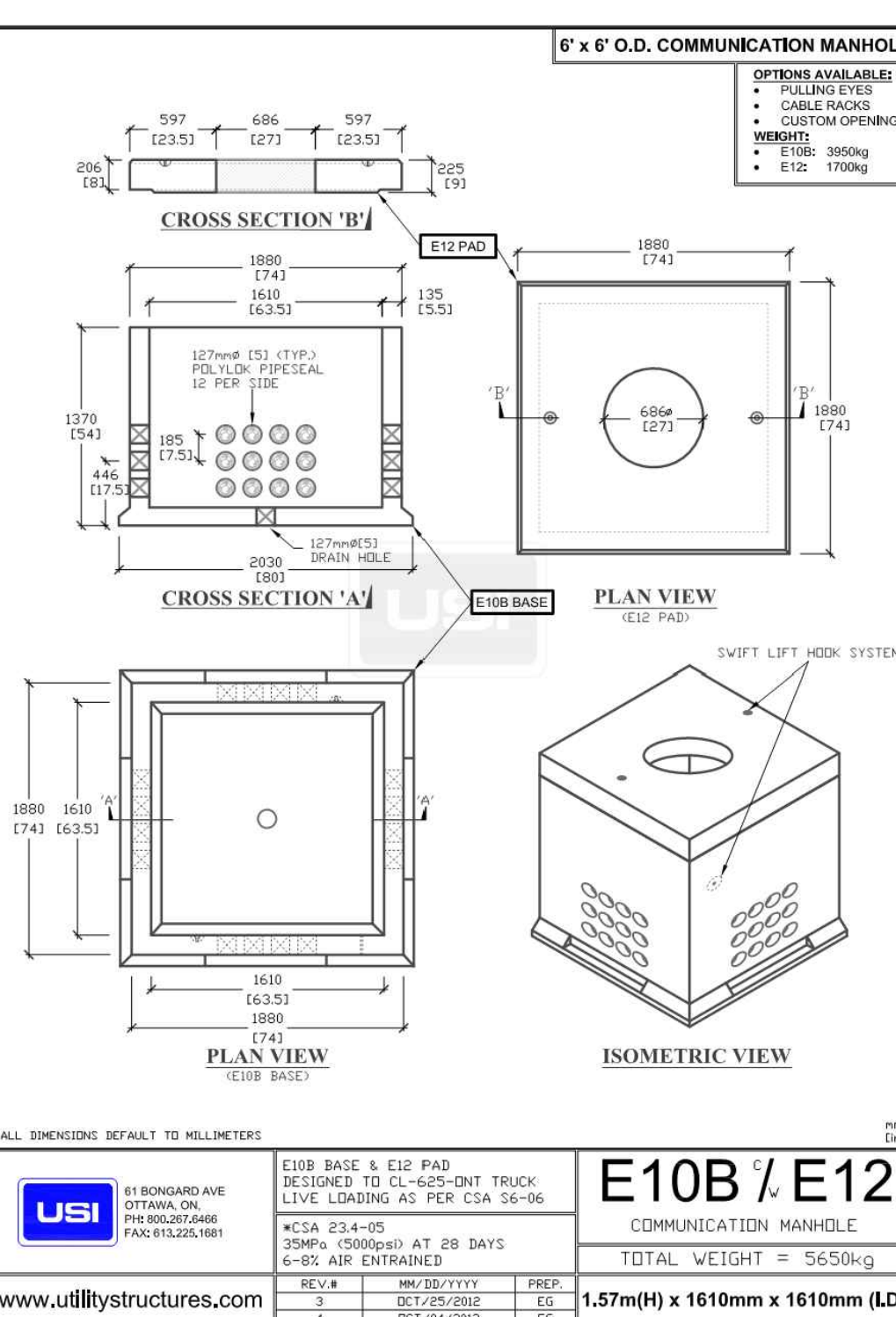
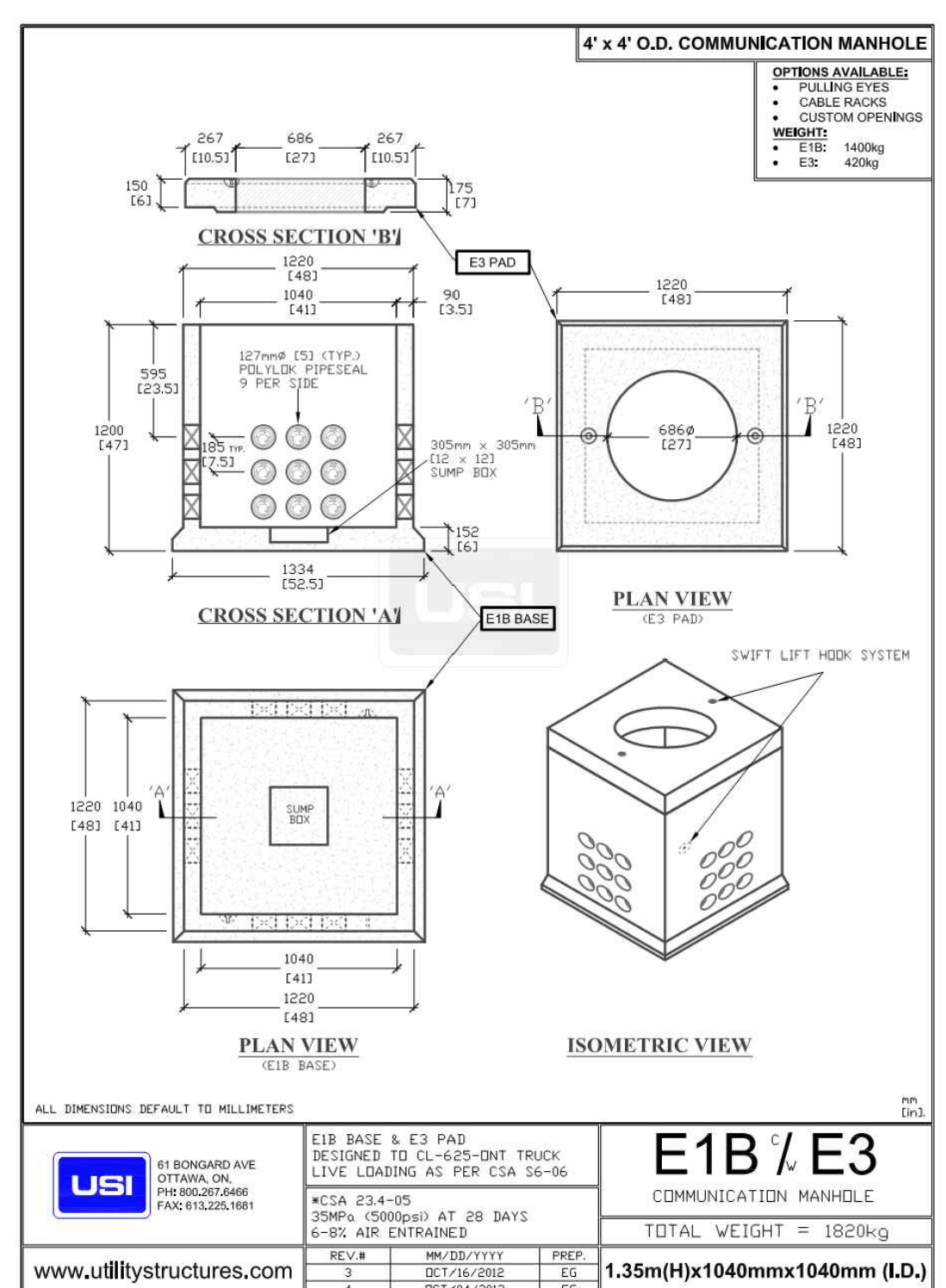
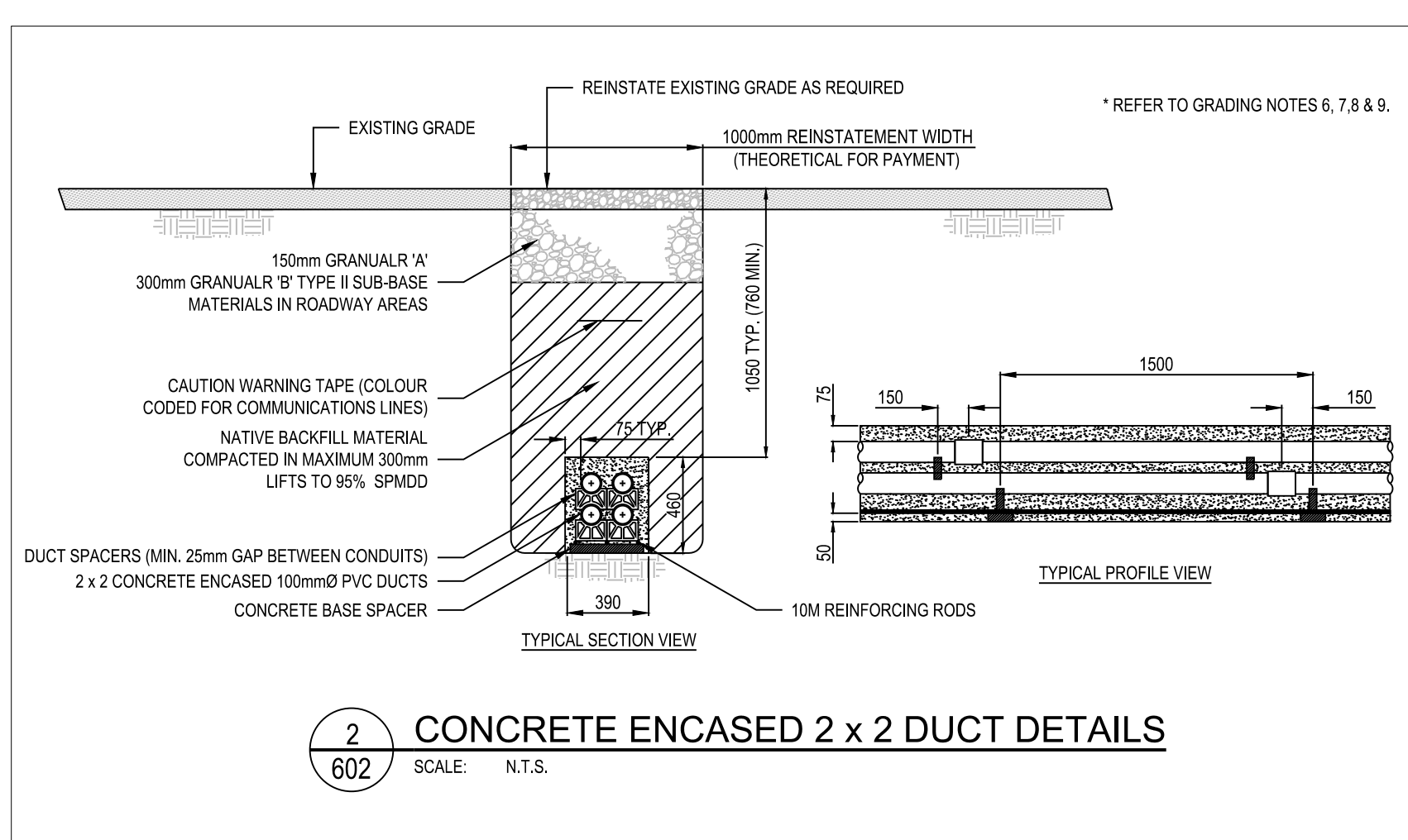
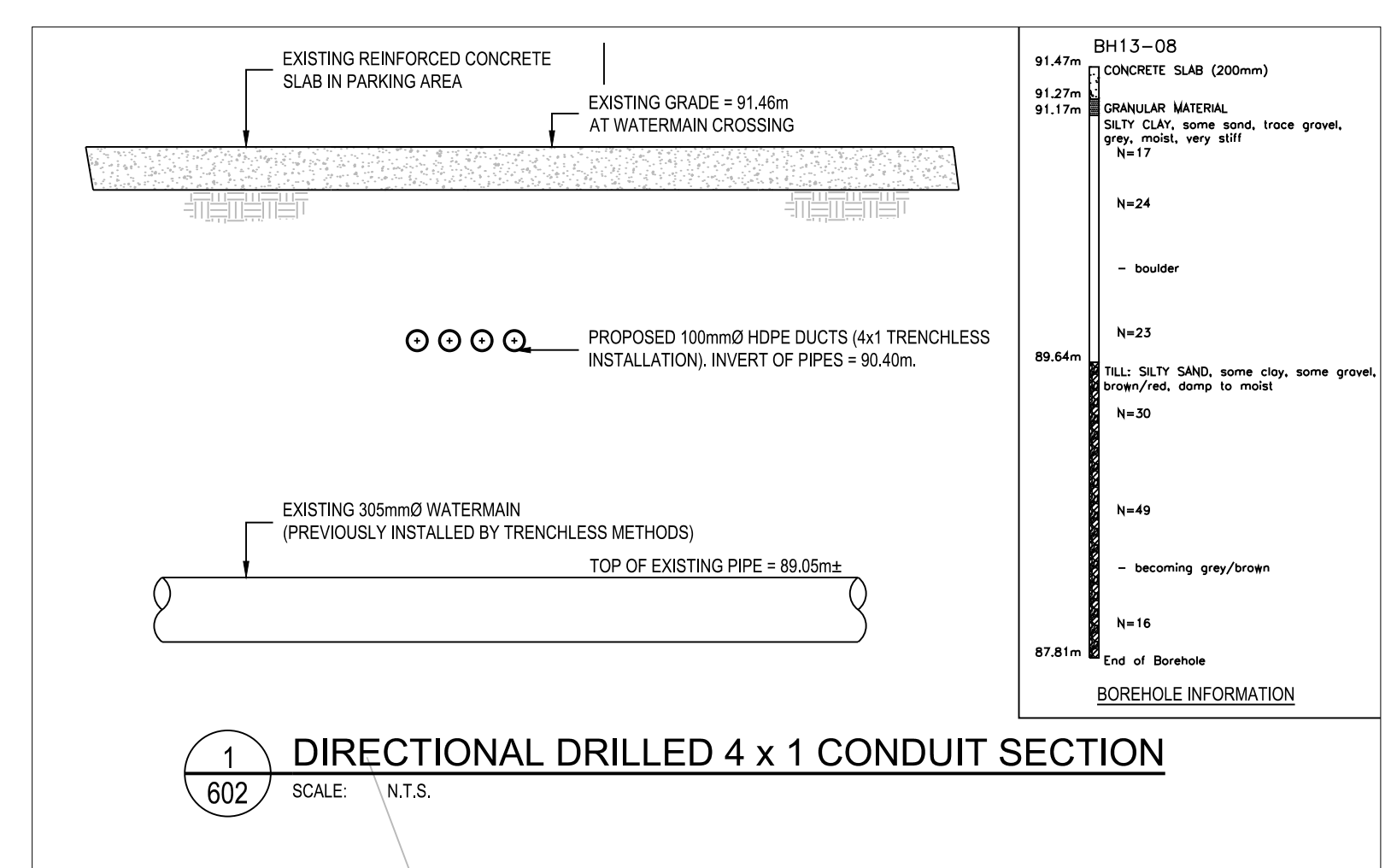
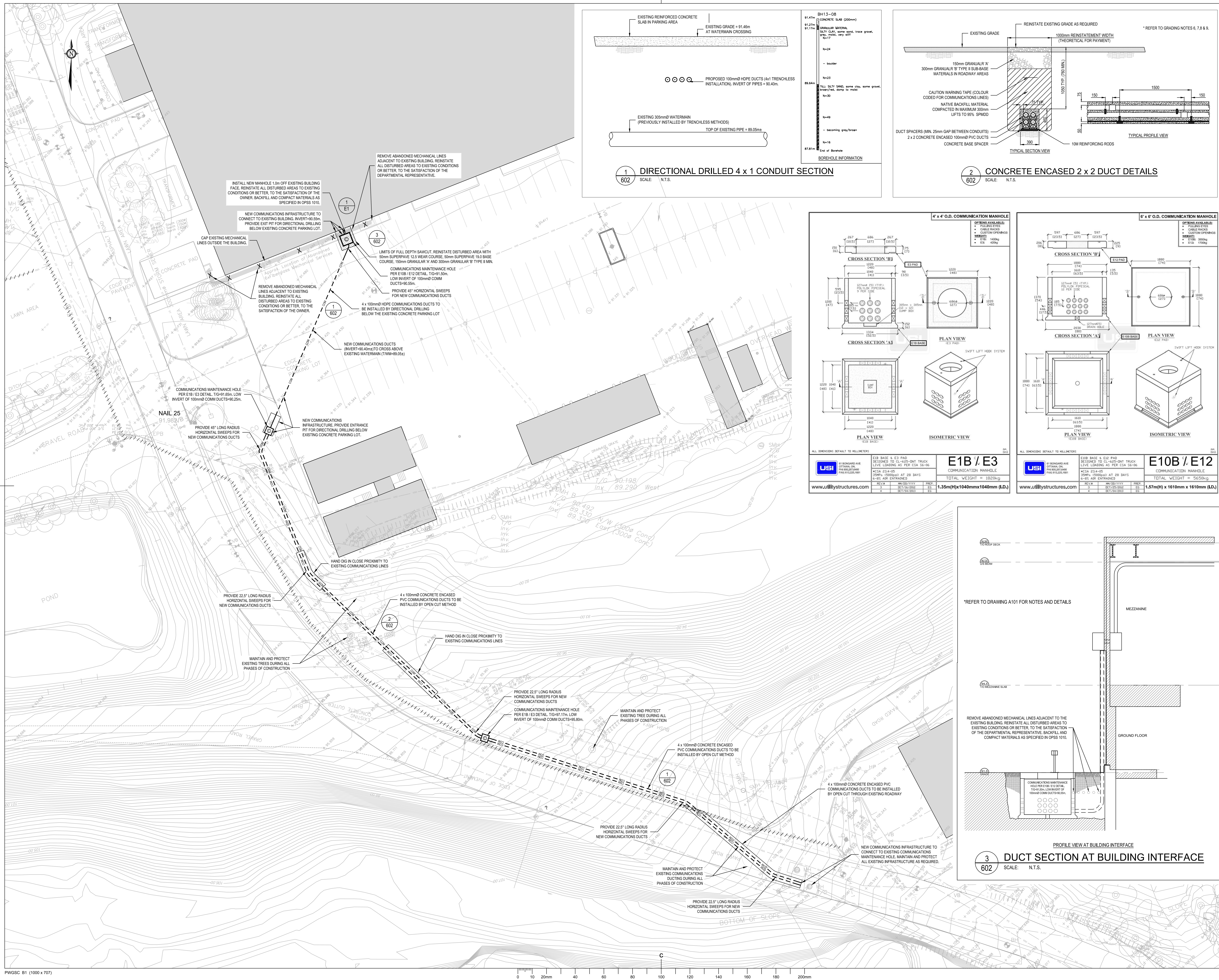
**SITE INFRASTRUCTURE PROJECT\_B**

**NOTES & DETAILS: COMMUNICATIONS DUCTWORK**

Designed By	GJM	Conçu par
Date	(2017/12/11)	(yyyy/mm/dd)
Drawn By	SM	Dessiné par
Date	(2017/12/11)	(yyyy/mm/dd)
Reviewed By	GJM	Examiné par
Date	(2017/12/11)	(yyyy/mm/dd)
Approved By	GJM	Approuvé par
Date	(2017/12/11)	(yyyy/mm/dd)

Project Manager	JULIE CARRIERE	Administrateur de projets
Project no.		No. du projet
7218202		
Drawing no.		No. du dessin
C601		





Government of Canada / Gouvernement du Canada

**Canada**

**PETER J. KINDREE ARCHITECT**

79 Hinton Ave. N. Ottawa K1Y 0Z7

79 Ave. Hinton N. Ottawa K1Y 0Z7 613-860-1530

**NOVATECH**

Engineers, Planners & Landscape Architects  
Suite 200, 240 Michael Cowpland Drive  
Ottawa, Ontario, Canada K2M 1P6

Telephone: (613) 254-9643  
Facsimile: (613) 254-5867  
Website: www.novatech-eng.com

**LEGEND**

--- U/G COMMUNICATIONS LINE (NEW)

⊙ COMMUNICATIONS MANHOLE (NEW)

IT IS THE RESPONSIBILITY OF THE APPROPRIATE CONTRACTOR TO CHECK AND VERIFY ALL DIMENSIONS ON SITE. ALL CONTRACTORS MUST COMPLY WITH ALL PERTINENT CODES AND BYLAWS. DO NOT SCALE DRAWINGS. THIS DRAWING MAY NOT BE USED FOR CONSTRUCTION UNTIL SIGNED. COPYRIGHT RESERVED.

IL APPARTIEN À L'ENTREPRENEUR CONCERNÉ EXAMINER ET VÉRIFIER TOUTES LES DIMENSIONS SUR LE CHANTIER. TOUS LES ENTREPRENEURS DOIVENT SE CONFORMER AUX CODES ET RÈGLEMENTS PERTINENTS. NE PAS RELEVÉR DE DIMENSIONS À L'ÉCHELLE SUR LES DESSINS. LE PRÉSENT DESSIN NE PEUT ÊTRE UTILISÉ SUR LE CHANTIER À MOINS QU'IL NE SOIT SIGNÉ. TOUS DROITS RÉSERVÉS.

4	Issued for Tender	2017/12/11
3	Issued for 99% Review	2017/10/13
2	Reference to E1 Added at Building	2017/06/23
1	Updated Alignment per Locate Info	2017/06/20

revisions	description	date
A	A detail no. du detail	A
B	B location drawing no. sur dessin no.	B
C	C drawing no. dessin no.	C

project: **SITE INFRASTRUCTURE PROJECT\_B**

Drawing Scale: 1:500

**SITE SERVICING: COMMUNICATIONS DUCTWORK**

Designed By	GJM	Conçu par	GJM
Date	(2017/06/12)	(yyyy/mm/dd)	(yyyy/mm/dd)
Drawn By	SM	Dessiné par	SM
Date	(2017/10/13)	(yyyy/mm/dd)	(yyyy/mm/dd)
Reviewed By	GJM	Examiné par	GJM
Date	(2017/10/13)	(yyyy/mm/dd)	(yyyy/mm/dd)
Approved By	GJM	Approuvé par	GJM
Date	(2017/10/13)	(yyyy/mm/dd)	(yyyy/mm/dd)

Project Manager: **JULIE CARRIERE** / Administrateur de projets

Project no.: **7218202**

Drawing no.: **C602**





IT IS THE RESPONSIBILITY OF THE APPROPRIATE CONTRACTOR TO CHECK AND VERIFY ALL DIMENSIONS ON SITE. ALL CONTRACTORS MUST COMPLY WITH ALL PERMIT CODES AND BYLAWS. DO NOT SCALE DRAWINGS. THIS DRAWING MAY NOT BE USED FOR CONSTRUCTION UNTIL SIGNED. COPYRIGHT RESERVED.

IL APPARTIENT A L'ENTREPRENEUR CONCERNE D'EXAMINER ET DE VÉRIFIER TOUTES LES DIMENSIONS SUR LE CHANTIER. TOUS LES ENTREPRENEURS DOIVENT SE CONFORMER AUX CODES ET RÈGLEMENTS PERTINENTS. NE PAS RELIEVER DE DIMENSIONS A L'ÉCHELLE SUR LES DESSINS. LE PRÉSENT DESSIN NE PEUT ÊTRE UTILISÉ SUR LE CHANTIER À MOINS QU'IL NE SOIT SIGNÉ. TOUS DROITS RÉSERVÉS.

revisions	description	date
4	Issued for Tender	2017/12/11
3	Issued for 99% Review	2017/10/13
2	Revised Alignment to Innes Road	2017/09/22
1	Issued for Coordination Meeting	2017/09/18

A	B	C
detail no. du detail	location drawing no. sur dessin no.	drawing no. dessin no.

project project  
**SITE INFRASTRUCTURE PROJECT\_B**

Drawing Scale: 1:500  
Échelle

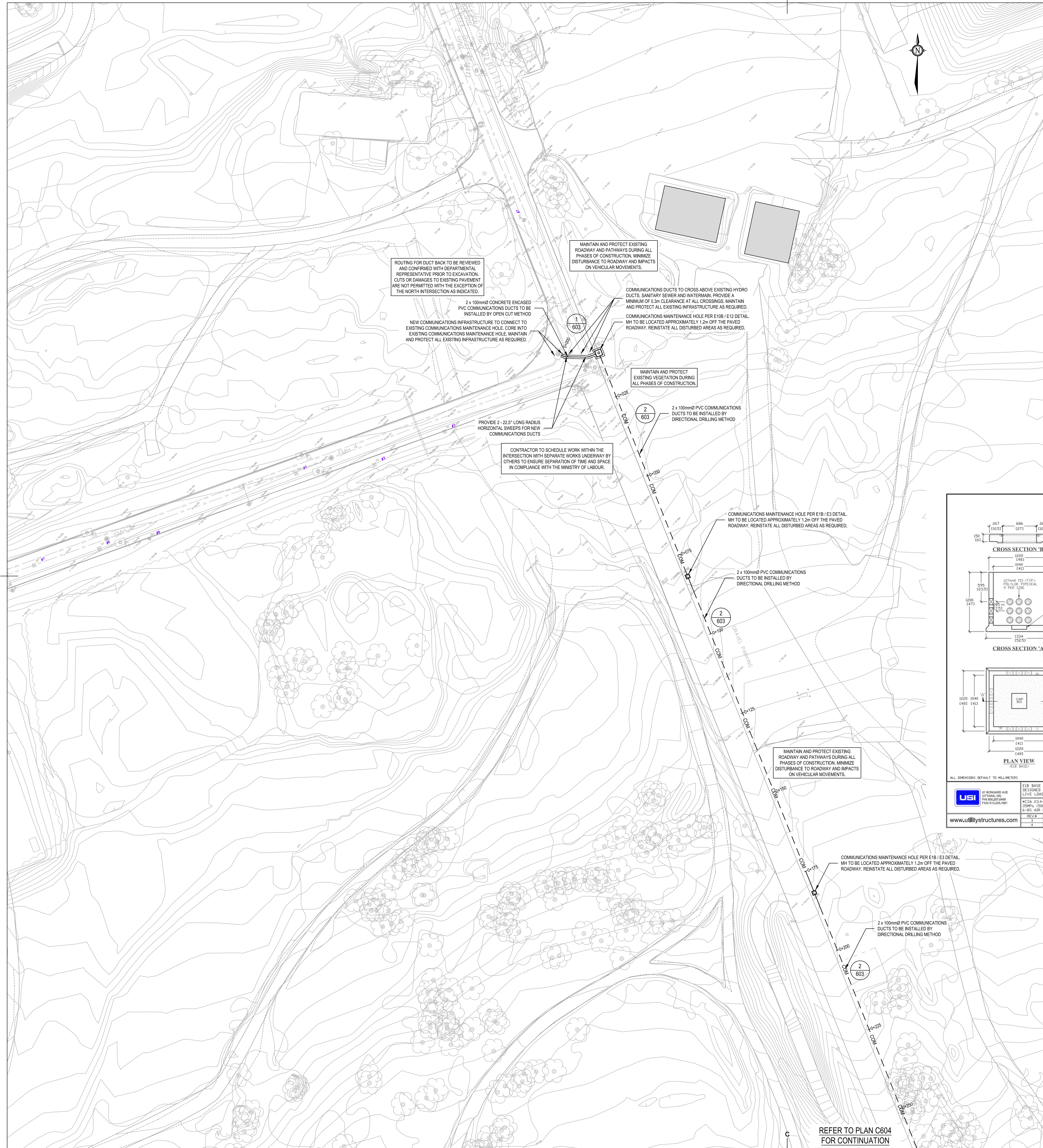
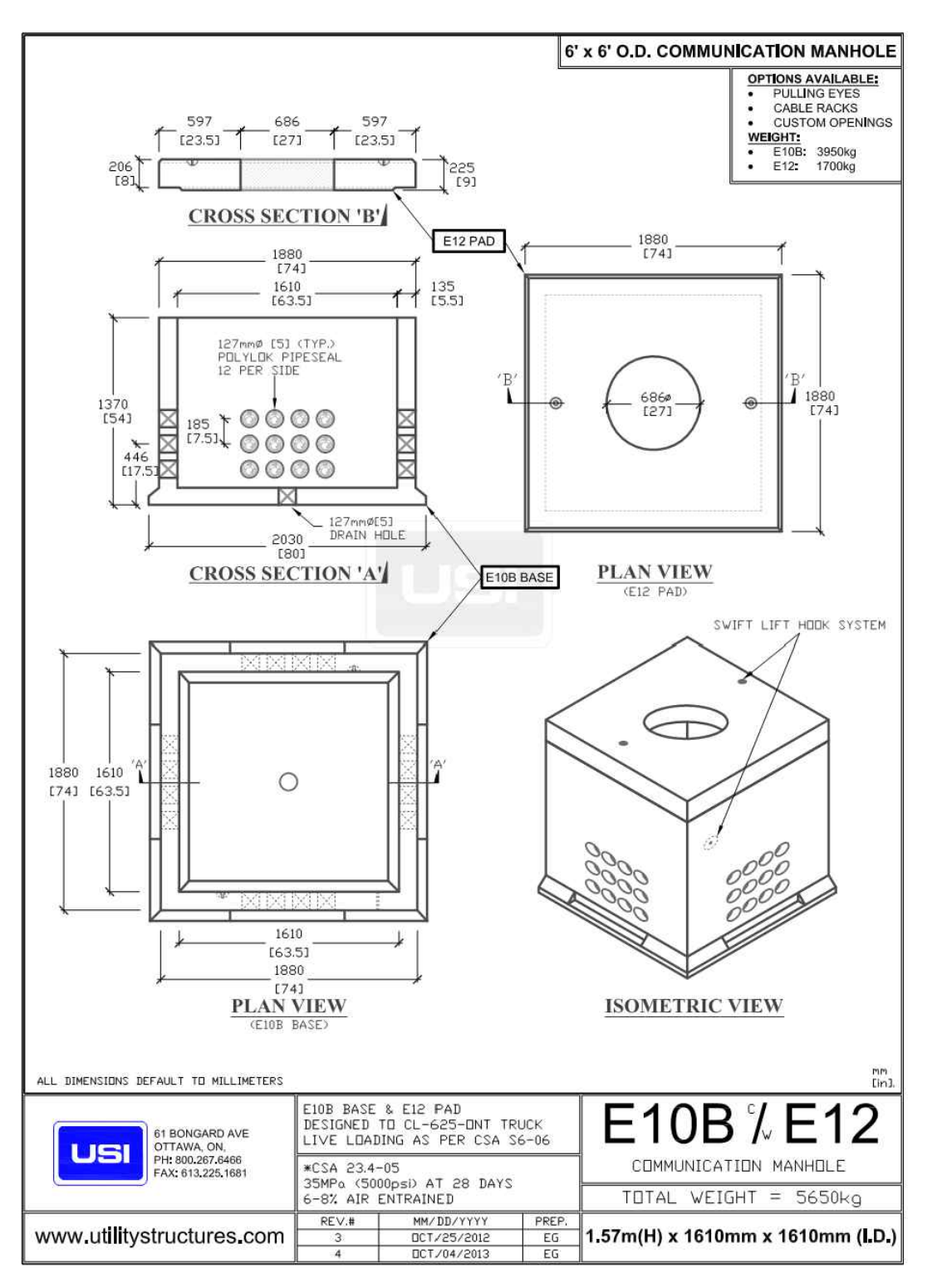
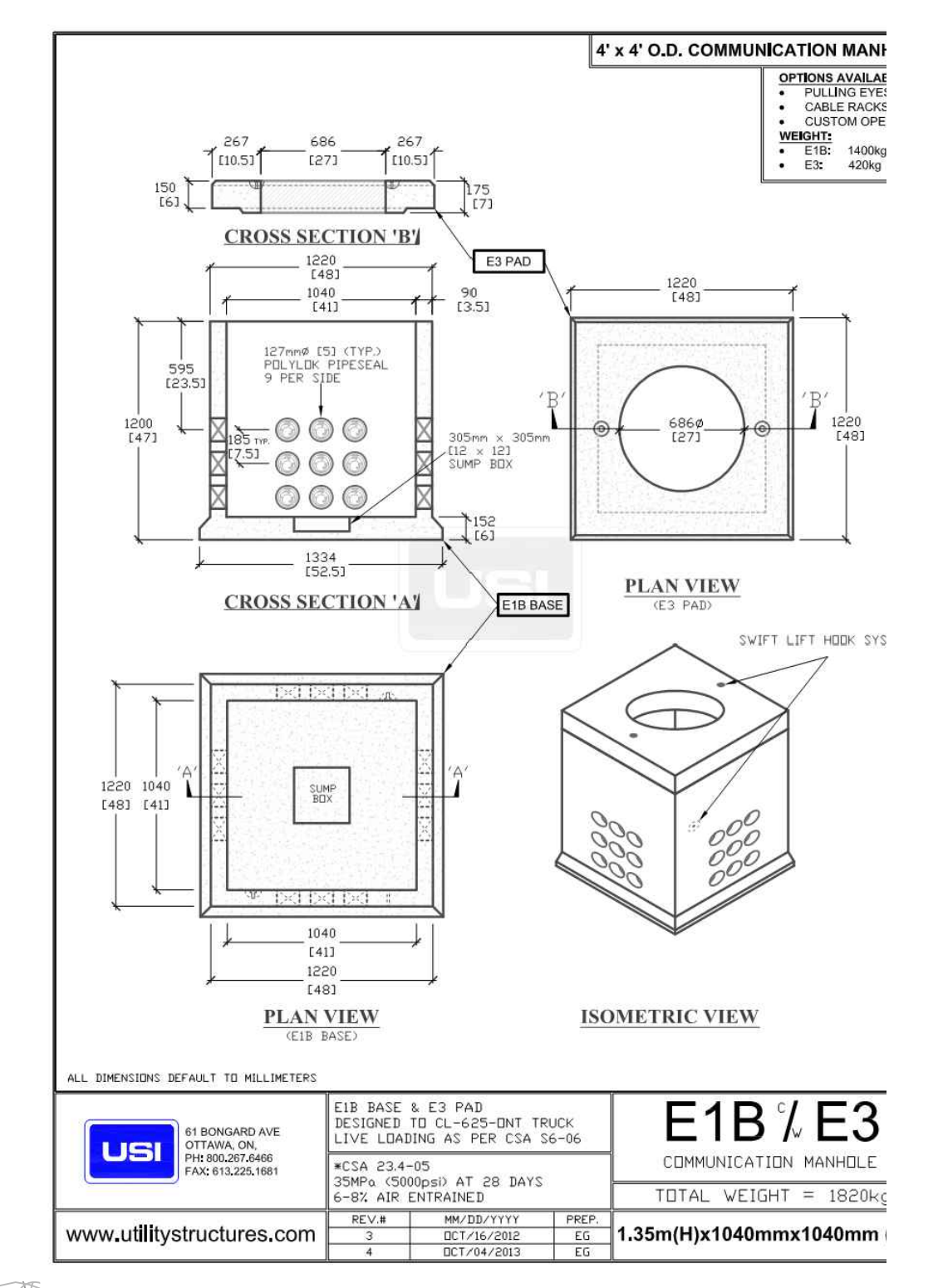
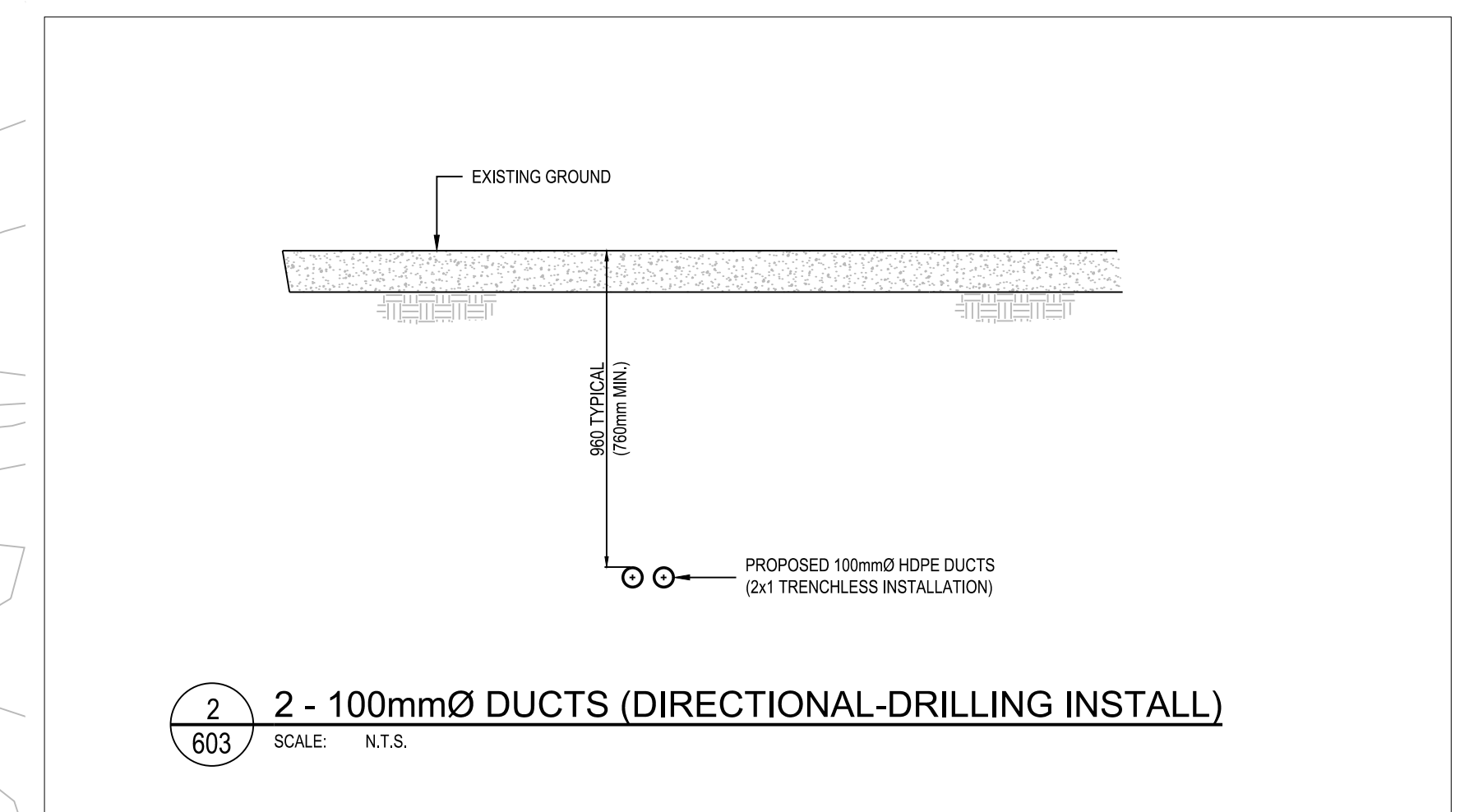
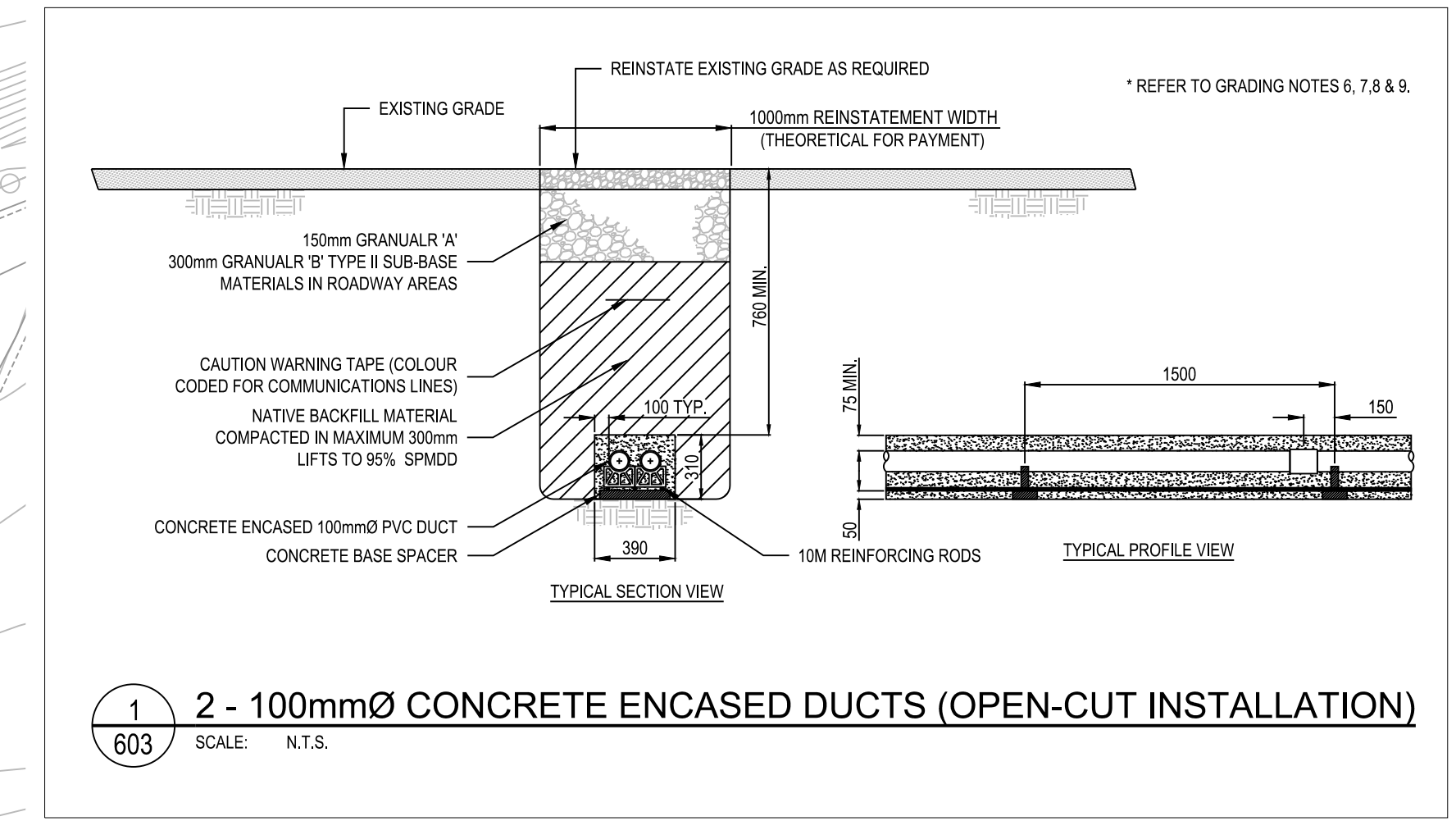
**SITE\_SERVICING: COMMUNICATIONS DUCTWORK**

Designed By	GJM	Conçu par	
Date	(2017/06/12)	(yyyy/mm/dd)	
Drawn By	SM	Dessiné par	
Date	(2017/10/13)	(yyyy/mm/dd)	
Reviewed By	GJM	Examiné par	
Date	(2017/10/13)	(yyyy/mm/dd)	
Approved By	GJM	Approuvé par	
Date	(2017/10/13)	(yyyy/mm/dd)	

Project Manager: JULIE\_CARRIERE / Administrateur de projets  
Project no.: No. du projet

7218202

Drawing no.: No. du dessin  
**C603**







REFER TO PLAN C603 FOR CONTINUATION

REFER TO PLAN C605 FOR CONTINUATION



**PETER J. KINDREE ARCHITECT**

79 Hinton Ave. N. Ottawa K1Y 0Z7  
79 Ave. Hinton N. 613-860-1530



Engineers, Planners & Landscape Architects  
Suite 202, 240 Michael Cowpland Drive  
Ottawa, Ontario, Canada K2M 1P6  
Telephone: (613) 254-9643  
Facsimile: (613) 254-5867  
Website: www.novatech-eng.com

**LEGEND**

---	COM	U/G COMMUNICATIONS LINE (NEW)
⊙		COMMUNICATIONS MANHOLE (NEW)



IT IS THE RESPONSIBILITY OF THE APPROPRIATE CONTRACTOR TO CHECK AND VERIFY ALL DIMENSIONS ON SITE. ALL CONTRACTORS MUST COMPLY WITH ALL PERTINENT CODES AND BYLAWS. DO NOT SCALE DRAWINGS. THIS DRAWING MAY NOT BE USED FOR CONSTRUCTION UNTIL SIGNED. COPYRIGHT RESERVED.

IL APPARTIENT À L'ENTREPRENEUR CONCERNÉ D'EXAMINER ET DE VÉRIFIER TOUTES LES DIMENSIONS SUR LE CHANTIER. TOUS LES ENTREPRENEURS DOIVENT SE CONFORMER AUX CODES ET RÈGLEMENTS PERTINENTS. NE PAS RELEVÉR DE DIMENSIONS À L'ÉCHELLE SUR LES DESSINS. LE PRÉSENT DESSIN NE PEUT ÊTRE UTILISÉ SUR LE CHANTIER À MOINS QU'IL NE SOIT SIGNÉ. TOUS DROITS RÉSERVÉS.

4	Issued for Tender	2017/12/11
3	Issued for 99% Review	2017/10/13
2	Revised Alignment to Innes Road	2017/09/22
1	Issued for Coordination Meeting	2017/09/18

revisions	description	date
A	detail no. no. du détail	A
B	location drawing no. sur dessin no.	B
C	C drawing no. dessin no.	C

**SITE INFRASTRUCTURE PROJECT\_B**

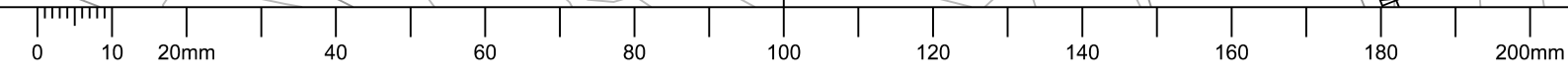
Drawing Scale: 1:500 / Échelle

**SITE\_SERVICING: COMMUNICATIONS DUCTWORK**

Designed By	GJM (2017/06/12)	Conçu par	
Date	(2017/06/12)	(yyyy/mm/dd)	
Drawn By	SM (2017/10/13)	Dessiné par	
Date	(2017/10/13)	(yyyy/mm/dd)	
Reviewed By	GJM (2017/10/13)	Examiné par	
Date	(2017/10/13)	(yyyy/mm/dd)	
Approved By	GJM (2017/10/13)	Approuvé par	
Date	(2017/10/13)	(yyyy/mm/dd)	

Project Manager: JULIE\_CARRIERE / Administrateur de projets  
Project no.: 7218202 / No. du projet

Drawing no.: C604 / No. du dessin





REFER TO PLAN C604  
FOR CONTINUATION



**PETER J. KINDREE ARCHITECT**  
79 Hinton Ave. N. 79 Ave. Hinton N.  
Ottawa K1Y 0Z7 613-860-1530

**NOVATECH**  
Engineers, Planners & Landscape Architects  
Suite 200, 240 Michael Cowpland Drive  
Ottawa, Ontario, Canada K2M 1P6  
Telephone: (613) 254-9643  
Facsimile: (613) 254-5867  
Website: www.novatech-eng.com

**LEGEND**  
--- COM --- U/G COMMUNICATIONS LINE (NEW)  
⊙ COMMUNICATIONS MANHOLE (NEW)



IT IS THE RESPONSIBILITY OF THE APPROPRIATE CONTRACTOR TO CHECK AND VERIFY ALL DIMENSIONS ON SITE. ALL CONTRACTORS MUST COMPLY WITH ALL PERTINENT CODES AND BYLAWS. DO NOT SCALE DRAWINGS. THIS DRAWING MAY NOT BE USED FOR CONSTRUCTION UNTIL SIGNED. COPYRIGHT RESERVED.

IL APPARTIENT À L'ENTREPRENEUR CONCERNÉ D'EXAMINER ET DE VÉRIFIER TOUTES LES DIMENSIONS SUR LE CHANTIER. TOUS LES ENTREPRENEURS DOIVENT SE CONFORMER AUX CODES ET RÈGLEMENTS PERTINENTS. NE PAS RELIEVER DE DIMENSIONS À L'ÉCHELLE SUR LES DESSINS. LE PRÉSENT DESSIN NE PEUT ÊTRE UTILISÉ SUR LE CHANTIER À MOINS QU'IL NE SOIT SIGNÉ. TOUS DROITS RÉSERVÉS.

revisions	description	date
4	Issued for Tender	2017/12/11
3	Issued for 99% Review	2017/10/13
2	Revised Alignment to Innes Road	2017/09/22
1	Issued for Coordination Meeting	2017/09/18

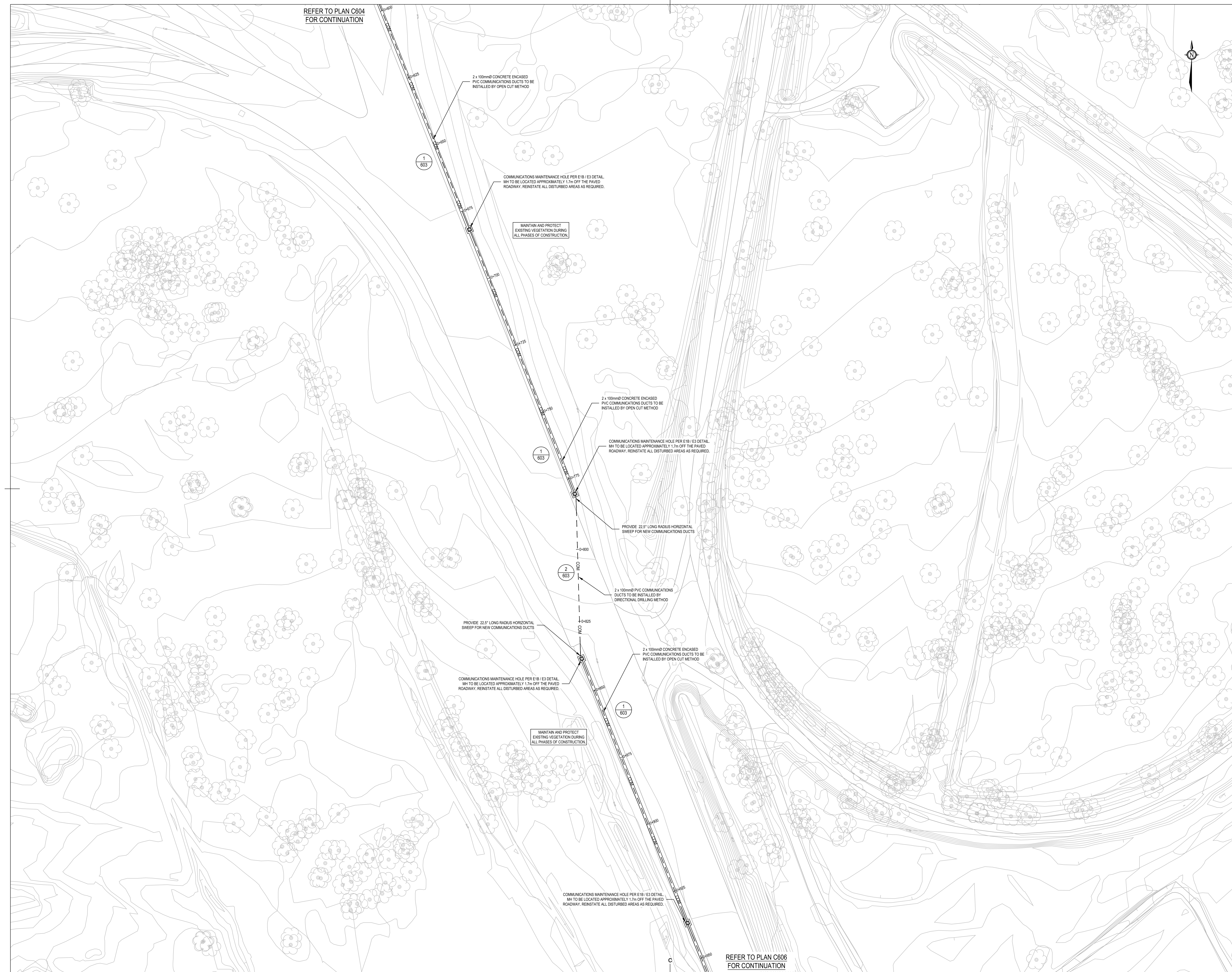
A	detail no. du détail	A
B	location drawing no. sur dessin no.	B
C	drawing no. dessin no.	C

project project  
**SITE INFRASTRUCTURE PROJECT\_B**  
Drawing Scale 1 : 500 Échelle  
drawing dessin

**SITE SERVICING: COMMUNICATIONS DUCTWORK**

Designed By GJM (2017/06/12) Conçu par  
Date (yyyy/mm/dd) (yyyy/mm/dd)  
Drawn By SM (2017/10/13) Dessiné par  
Date (yyyy/mm/dd) (yyyy/mm/dd)  
Reviewed By GJM (2017/10/13) Examiné par  
Date (yyyy/mm/dd) (yyyy/mm/dd)  
Approved By GJM (2017/10/13) Approuvé par  
Date (yyyy/mm/dd) (yyyy/mm/dd)

JULIE\_CARRIERE  
Project Manager Administrateur de projets  
Project no. No. du projet  
**7218202**  
Drawing no. No. du dessin  
**C605**



REFER TO PLAN C606  
FOR CONTINUATION



**LEGEND**

---	COM	UIG COMMUNICATIONS LINE (NEW)
⊙		COMMUNICATIONS MANHOLE (NEW)



IT IS THE RESPONSIBILITY OF THE APPROPRIATE CONTRACTOR TO CHECK AND VERIFY ALL DIMENSIONS ON SITE. ALL CONTRACTORS MUST COMPLY WITH ALL PERTINENT CODES AND BYLAWS. DO NOT SCALE DRAWINGS. THIS DRAWING MAY NOT BE USED FOR CONSTRUCTION UNTIL SIGNED. COPYRIGHT RESERVED.

IL APPARTIENT A L'ENTREPRENEUR CONCERNE D'EXAMINER ET DE VÉRIFIER TOUTES LES DIMENSIONS SUR LE CHANTIER. TOUS LES ENTREPRENEURS DOIVENT SE CONFORMER AUX CODES ET RÈGLEMENTS PERTINENTS. NE PAS RELEVÉR DE DIMENSIONS A L'ÉCHELLE SUR LES DESSINS. LE PRÉSENT DESSIN NE PEUT ÊTRE UTILISÉ SUR LE CHANTIER À MOINS QU'IL NE SOIT SIGNÉ. TOUS DROITS RÉSERVÉS.

revisions	description	date
4	Issued for Tender	2017/12/11
3	Issued for 99% Review	2017/10/13
2	Revised Alignment to Innes Road	2017/09/22
1	Issued for Coordination Meeting	2017/09/18

A	A detail no. no. du détail	A
B	B location drawing no. sur dessin no.	B
C	C drawing no. dessin no.	C

project \_\_\_\_\_ projet \_\_\_\_\_

**SITE INFRASTRUCTURE PROJECT\_B**

Drawing Scale 1 : 500 Échelle

drawing \_\_\_\_\_ dessin \_\_\_\_\_

**SITE\_SERVICING: COMMUNICATIONS DUCTWORK**

Designed By	GJM (2017/06/12)	Conçu par	
Date	(2017/06/12)	(yyyy/mm/dd)	
Drawn By	SM (2017/10/13)	Dessiné par	
Date	(2017/10/13)	(yyyy/mm/dd)	
Reviewed By	GJM (2017/10/13)	Examiné par	
Date	(2017/10/13)	(yyyy/mm/dd)	
Approved By	GJM (2017/10/13)	Approuvé par	
Date	(2017/10/13)	(yyyy/mm/dd)	

JULIE\_CARRIERE  
Project Manager Administrateur de projets  
Project no. No. du projet

7218202

Drawing no. No. du dessin

C606







REFER TO PLAN C606  
FOR CONTINUATION

REFER TO PLAN C608  
FOR CONTINUATION



**PETER J. KINDREE ARCHITECT**

79 Hinton Ave. N. 79 Ave. Hinton N.  
Ottawa K1Y 0Z7 613-860-1530



Engineers, Planners & Landscape Architects  
Suite 200, 240 Michael Cowpland Drive  
Ottawa, Ontario, Canada K2M 1P6  
Telephone (613) 254-9643  
Facsimile (613) 254-5867  
Website www.novatech-eng.com

**LEGEND**

---	COM	U/G COMMUNICATIONS LINE (NEW)
⊙		COMMUNICATIONS MANHOLE (NEW)



IT IS THE RESPONSIBILITY OF THE APPROPRIATE CONTRACTOR TO CHECK AND VERIFY ALL DIMENSIONS ON SITE. ALL CONTRACTORS MUST COMPLY WITH ALL PERTINENT CODES AND BYLAWS. DO NOT SCALE DRAWINGS. THIS DRAWING MAY NOT BE USED FOR CONSTRUCTION UNTIL SIGNED. COPYRIGHT RESERVED.

IL APPARTIENT À L'ENTREPRENEUR CONCERNÉ D'EXAMINER ET DE VÉRIFIER TOUTES LES DIMENSIONS SUR LE CHANTIER. TOUS LES ENTREPRENEURS DOIVENT SE CONFORMER AUX CODES ET RÈGLEMENTS PERTINENTS. NE PAS RELIEVER DE DIMENSIONS À L'ÉCHELLE SUR LES DESSINS. LE PRÉSENT DESSIN NE PEUT ÊTRE UTILISÉ SUR LE CHANTIER À MOINS QU'IL NE SOIT SIGNÉ. TOUS DROITS RÉSERVÉS.

revisions	description	date
4	Issued for Tender	2017/12/11
3	Issued for 99% Review	2017/10/13
2	Revised Alignment to Innes Road	2017/09/22
1	Issued for Coordination Meeting	2017/09/18

A	detail no. du détail	A
B	location drawing no. sur dessin no.	B
C	drawing no. dessin no.	C

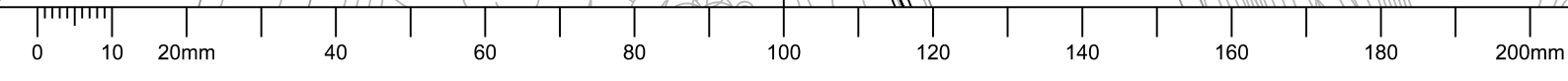
project project  
**SITE INFRASTRUCTURE PROJECT\_B**

Drawing Scale 1 : 500 Échelle

drawing dessin  
**SITE\_SERVICING: COMMUNICATIONS DUCTWORK**

Designed By	GJM	Conçu par	
Date	(2017/06/12)	(yyyy/mm/dd)	
Drawn By	SM	Dessiné par	
Date	(2017/10/13)	(yyyy/mm/dd)	
Reviewed By	GJM	Examiné par	
Date	(2017/10/13)	(yyyy/mm/dd)	
Approved By	GJM	Approuvé par	
Date	(2017/10/13)	(yyyy/mm/dd)	

JULIE\_CARRIERE  
Project Manager Administrateur de projets  
Project no. No. du projet  
**7218202**  
Drawing no. No. du dessin  
**C607**







IT IS THE RESPONSIBILITY OF THE APPROPRIATE CONTRACTOR TO CHECK AND VERIFY ALL DIMENSIONS ON SITE. ALL CONTRACTORS MUST COMPLY WITH ALL PERTINENT CODES AND BYLAWS. DO NOT SCALE DRAWINGS. THIS DRAWING MAY NOT BE USED FOR CONSTRUCTION UNTIL SIGNED. COPYRIGHT RESERVED.

IL APPARTIENT À L'ENTREPRENEUR CONCERNÉ D'EXAMINER ET DE VÉRIFIER TOUTES LES DIMENSIONS SUR LE CHANTIER. TOUS LES ENTREPRENEURS DOIVENT SE CONFORMER AUX CODES ET RÈGLEMENTS PERTINENTS. NE PAS RELIEVER DE DIMENSIONS À L'ÉCHELLE SUR LES DESSINS. LE PRÉSENT DESSIN NE PEUT ÊTRE UTILISÉ SUR LE CHANTIER À MOINS QU'IL NE SOIT SIGNÉ. TOUS DROITS RÉSERVÉS.

revisions	description	date
4	Issued for Tender	2017/12/11
3	Issued for 99% Review	2017/10/13
2	Revised Alignment to Innes Road	2017/09/22
1	Issued for Coordination Meeting	2017/09/18

A	detail no. du detail	A
B	location drawing no. sur dessin no.	B
C	drawing no. dessin no.	C

project / projet  
**SITE INFRASTRUCTURE PROJECT\_B**  
Drawing Scale / Échelle  
1 : 500

**SITE\_SERVICING: COMMUNICATIONS DUCTWORK**

Designed By / Conçu par	GJM
Date / (yyyy/mm/dd)	(2017/06/12)
Drawn By / Dessiné par	SM
Date / (yyyy/mm/dd)	(2017/10/13)
Reviewed By / Examiné par	GJM
Date / (yyyy/mm/dd)	(2017/10/13)
Approved By / Approuvé par	GJM
Date / (yyyy/mm/dd)	(2017/10/13)

Project Manager / Administrateur de projets  
Project no. / No. du projet  
**7218202**  
Drawing no. / No. du dessin  
**C608**

