



IT IS THE RESPONSIBILITY OF THE APPROPRIATE CONTRACTOR TO CHECK AND VERIFY ALL DIMENSIONS ON SITE. ALL CONTRACTORS MUST COMPLY WITH ALL PERTINENT CODES AND BYLAWS. DO NOT SCALE DRAWINGS. THIS DRAWING MAY NOT BE USED FOR CONSTRUCTION UNLESS SIGNED. COPYRIGHT RESERVED.

IL APPARTIENT A L'ENTREPRENEUR CONCERNE D'EXAMINER ET DE VERIFIER TOUTES LES DIMENSIONS SUR LE CHANTIER. TOUS LES ENTREPRENEURS DOIVENT SE CONFORMER AUX CODES ET REGLEMENTS PERTINENTS. NE PAS RELIEVER DE DIMENSIONS A L'ECHELLE SUR LES DESSINS. LE PRESENT DESSIN NE PEUT ETRE UTILISE SUR LE CHANTIER A MOINS QU'IL NE SOIT SIGNE. TOUS DROITS RESERVES.

4	ISSUED FOR TENDER	2017.12.11
3	ISSUED FOR 99% REVIEW	2017.10.13
2	ISSUED FOR CLIENT REVIEW	2017.05.17
1	ISSUED FOR PRELIMINARY DESIGN	2017.05.03

revisions	description	date
A	A: detail no. du detail	A
B	B: location drawing no. sur dessin no.	B
C	C: drawing no. dessin no.	C

project / projet

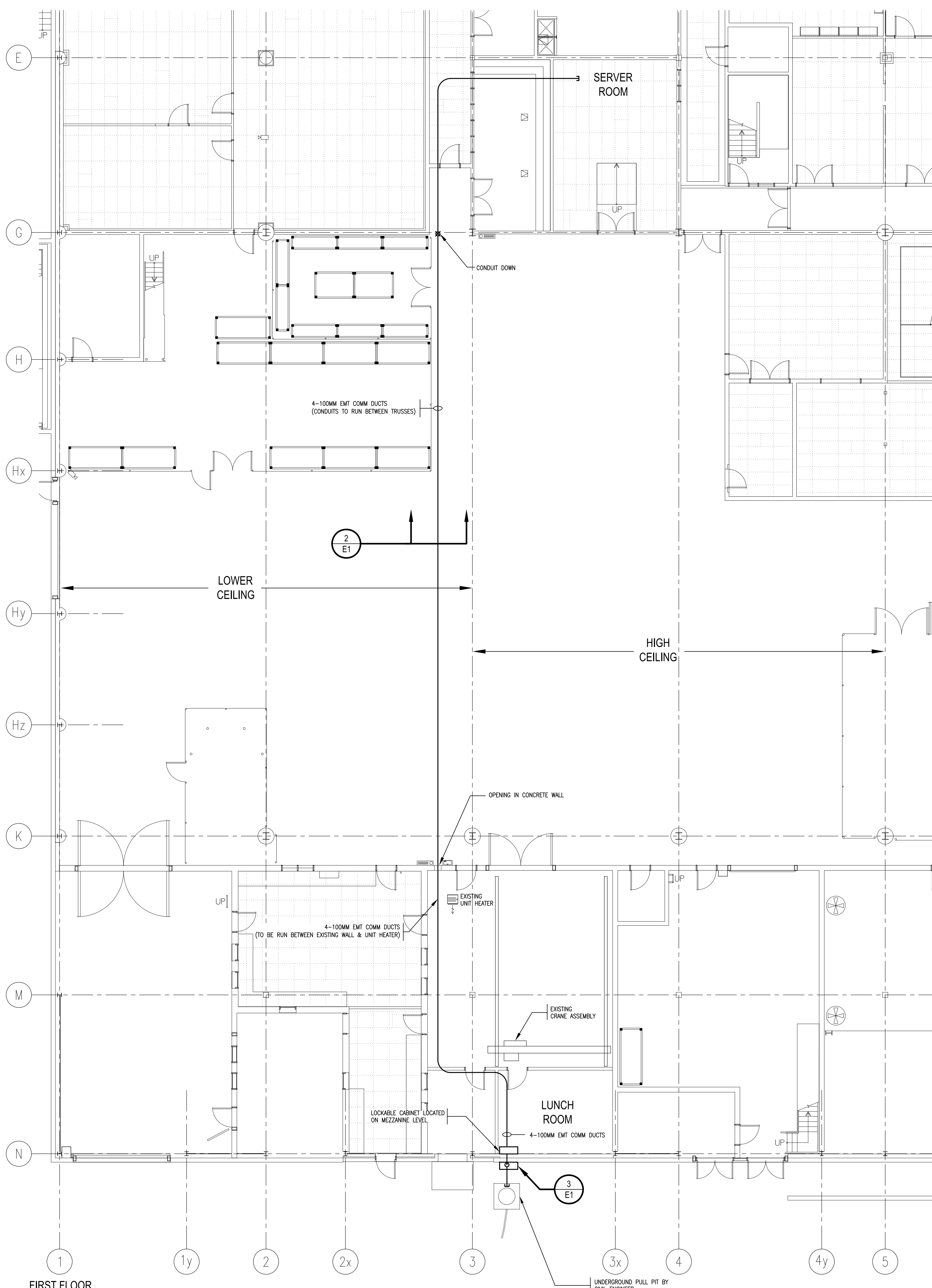
**SITE INFRASTRUCTURE PROJECT B**

drawing / dessin

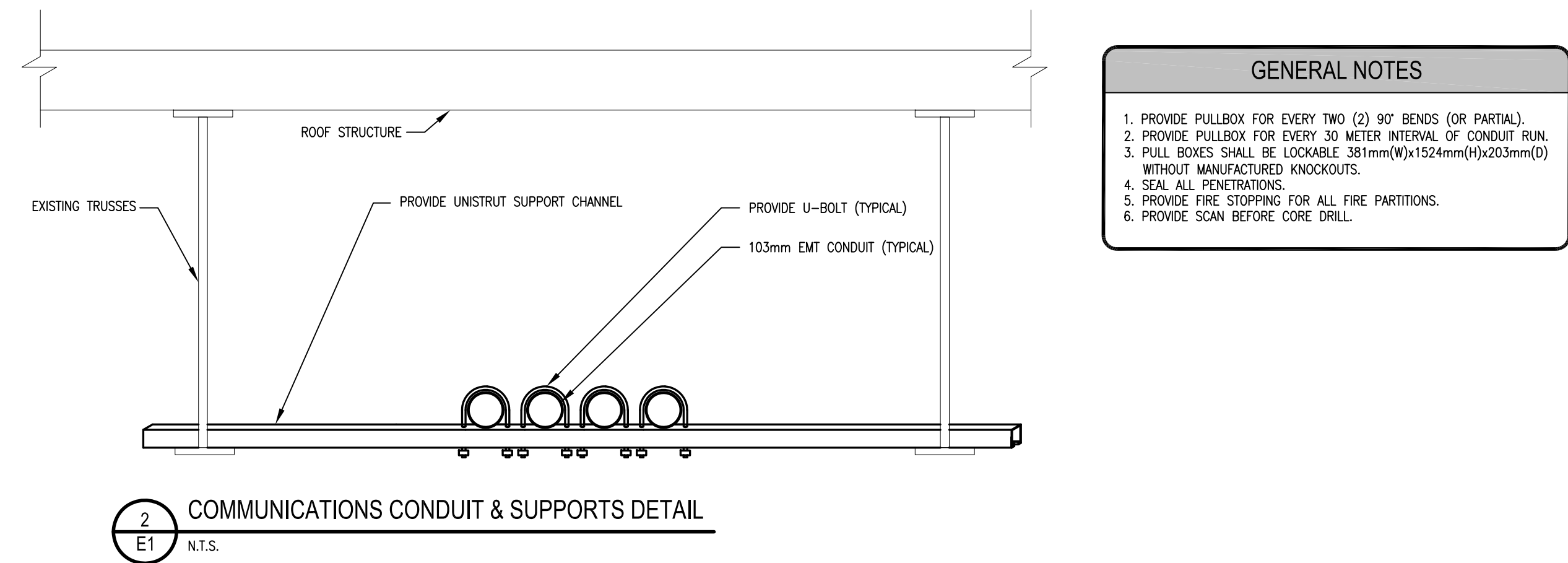
**ELECTRICAL COMMUNICATIONS NEW WORK**

Designed By / Conçu par: W.NEEDHAM  
Date / (yyyy/mm/dd):  
Drawn By / Dessiné par: E.YEH  
Date / (yyyy/mm/dd):  
Reviewed By / Examiné par: W.NEEDHAM  
Date / (yyyy/mm/dd):  
Approved By / Approuvé par: A.MIKHAIEL  
Date / (yyyy/mm/dd):  
Tender / Soumission: JULIE CARRIERE  
Project Manager / Administrateur de projets: JULIE CARRIERE  
Project no. / No. du projet: 7218202

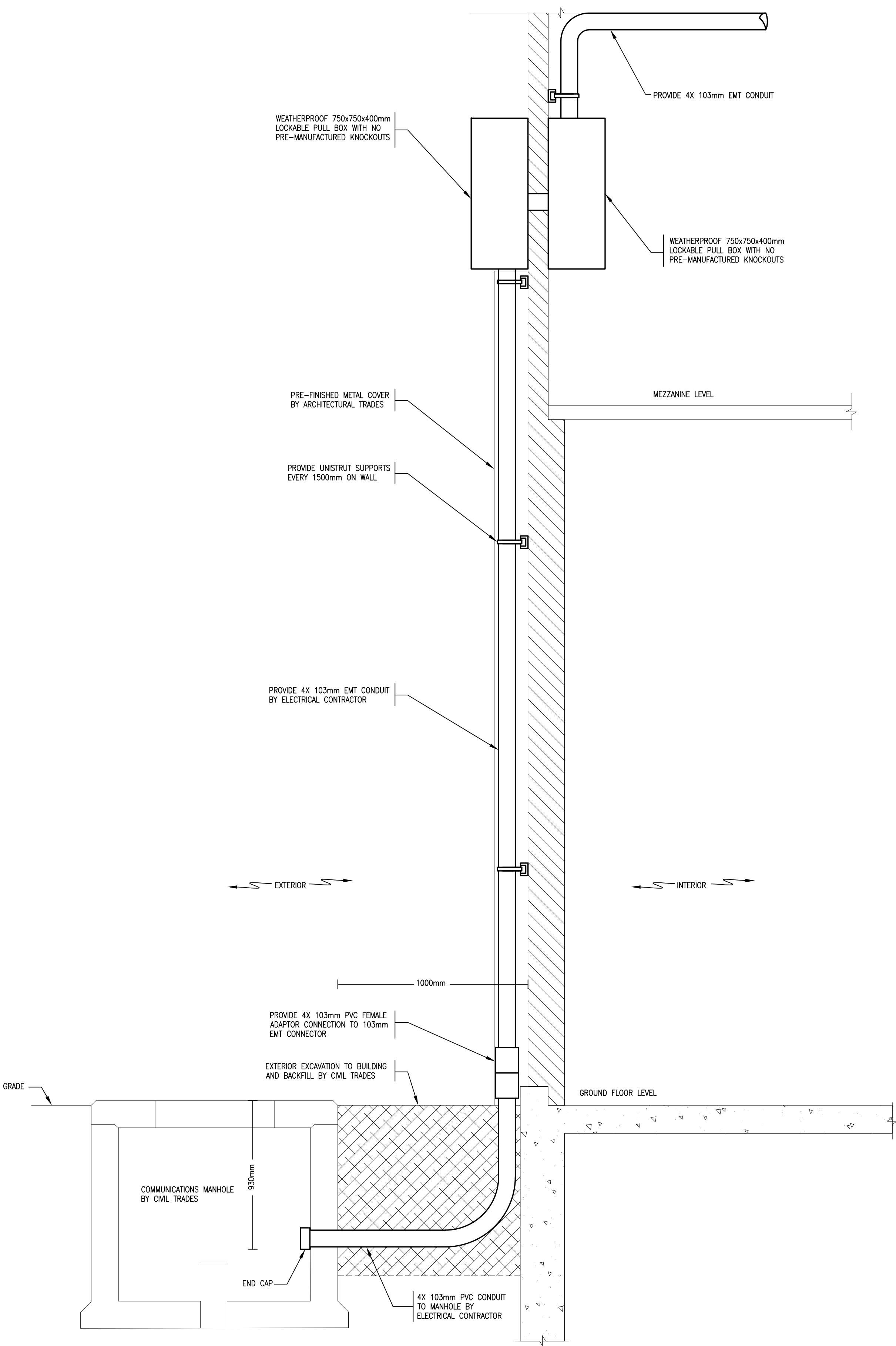
Drawing no. / No. du dessin: **E1** OF 1



**1 E1**  
FIRST FLOOR ELECTRICAL COMMUNICATIONS NEW WORK  
1:100



**2 E1**  
COMMUNICATIONS CONDUIT & SUPPORTS DETAIL  
N.T.S.



**3 E1**  
COMMUNICATIONS CONDUIT BUILDING ENTRY DETAIL  
N.T.S.