

REAL PROPERTY SERVICES
Western Region

Client

**CORRECTIONAL
SERVICES
CANADA**

Client

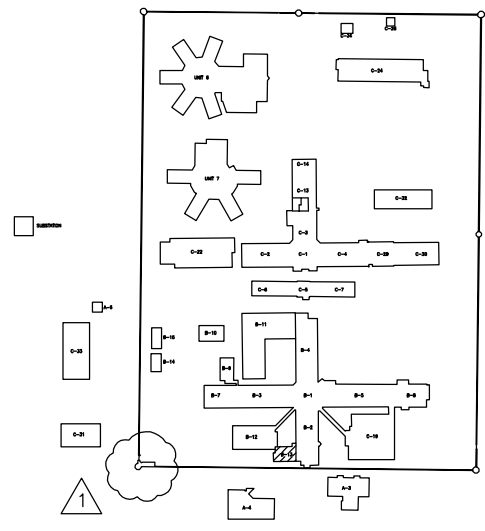
SASKATCHEWAN PENITENTIARY

COUPLAND KRAEMER
Architecture + Interior Design Inc.
Contact: Michael Coupland
mcoupland@ckd.ca

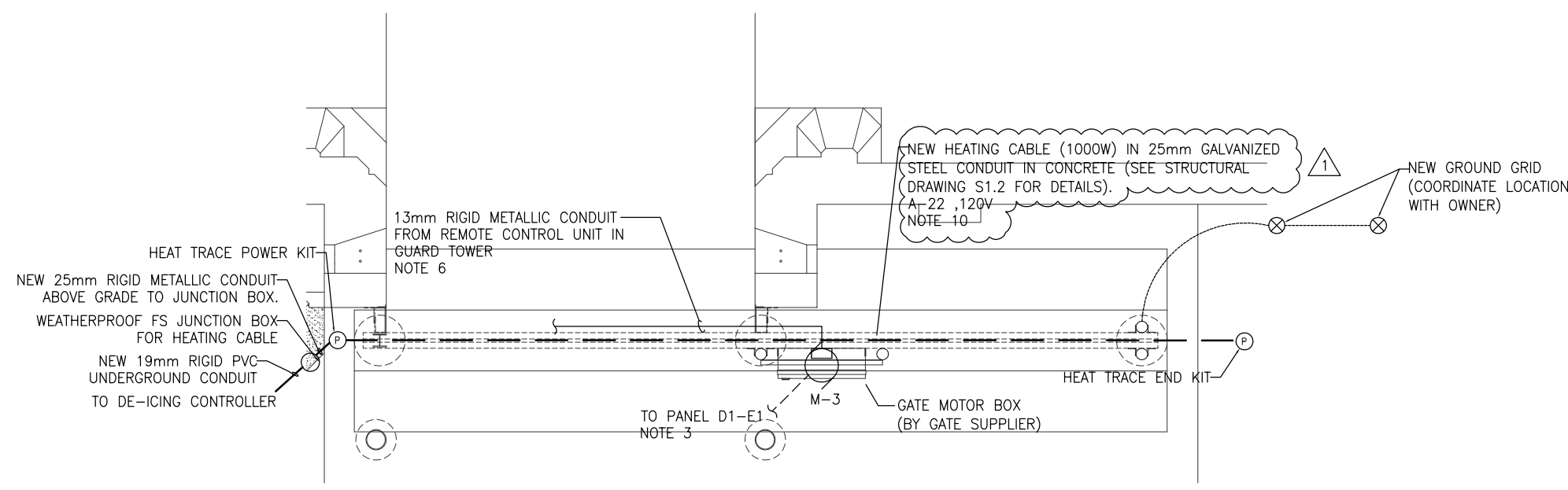
Suite 101
4602 1st Street SE
Calgary, Alberta
T2G 2G3
T: 403.269.7109
F: 403.269.7595

wsp

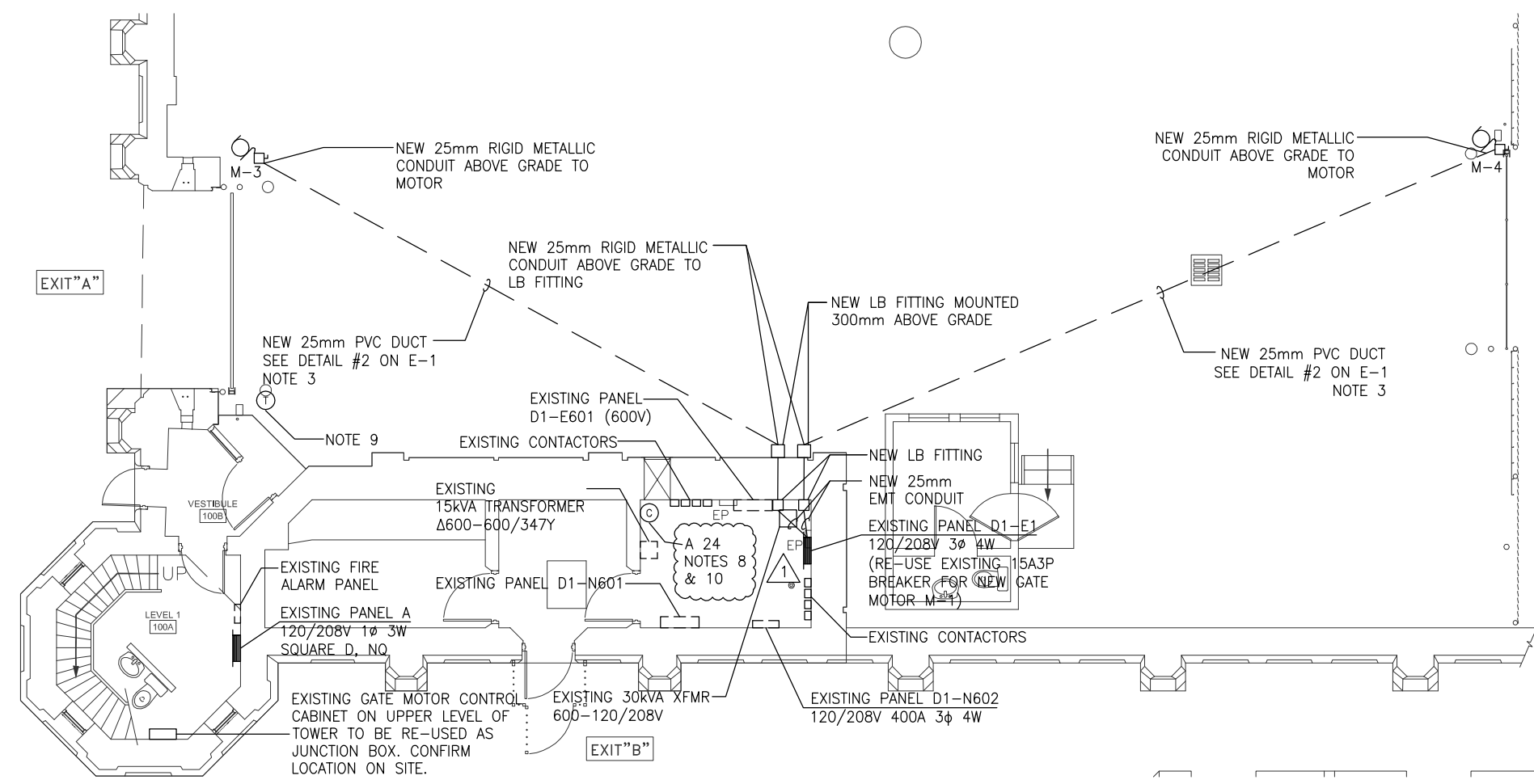
203 Wallman Crescent
SASKATOON SK S7T 0J1
PHONE: 306-665-6223 FAX: 306-665-8559
WWW.WSPGROUP.COM



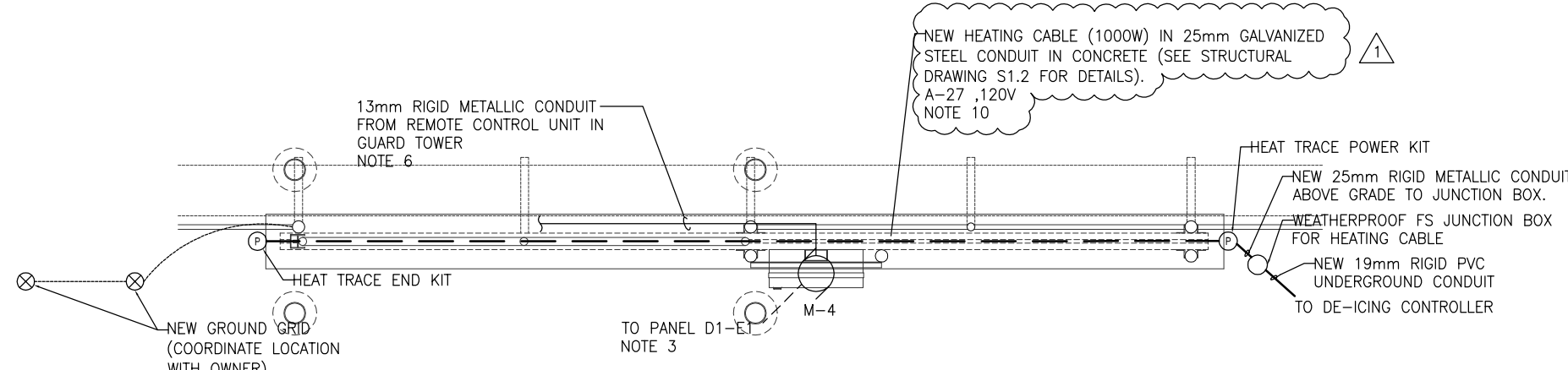
KEY PLAN
NTS



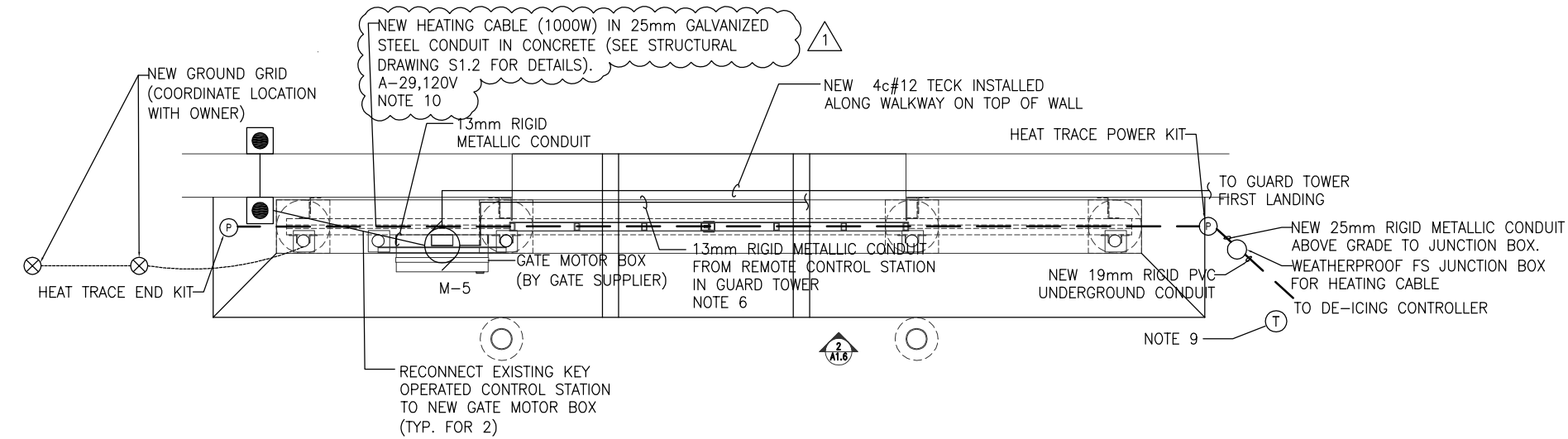
EXTERIOR NORTHEAST GATE (VMG 3)
1:50



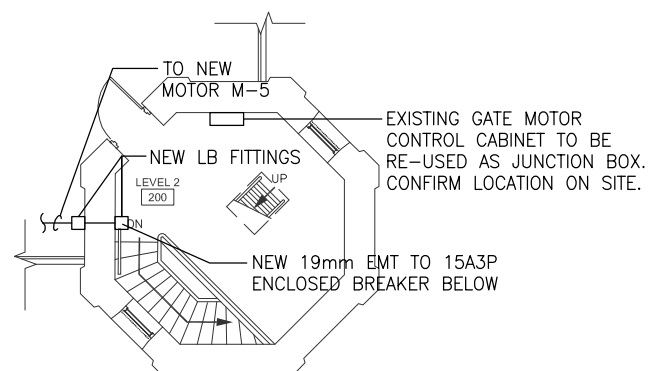
NORTHEAST TOWER - MAIN FLOOR
1:100



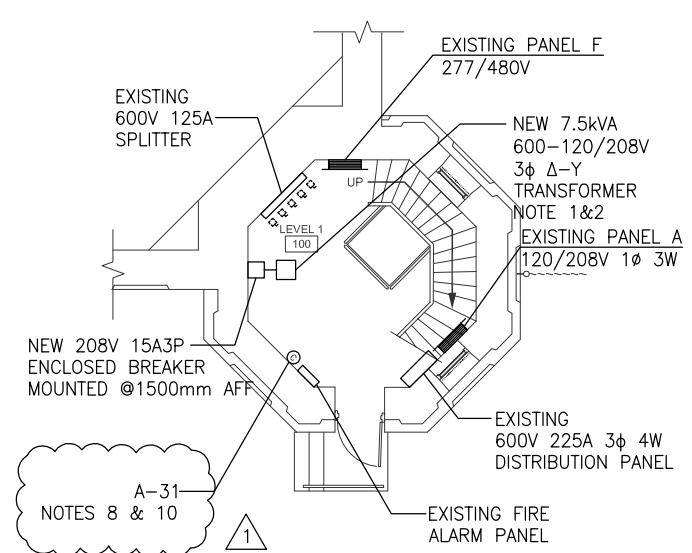
INTERIOR NORTHEAST GATE (VMG 4)
1:50



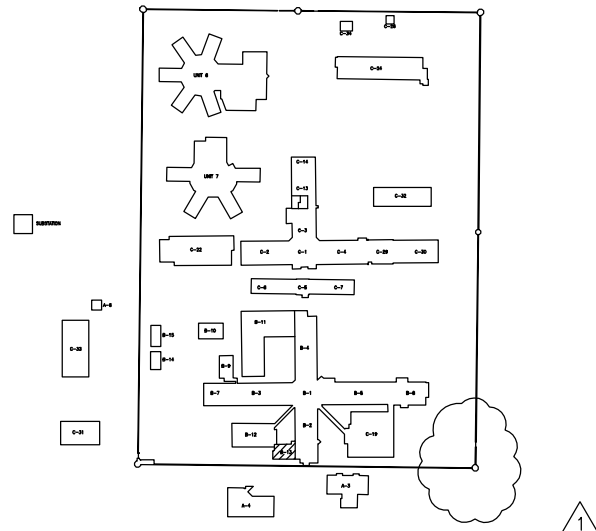
NORTHWEST GATE (VMG 5)
1:50



NORTHWEST TOWER - FIRST LANDING
1:100



NORTHWEST TOWER - MAIN FLOOR
1:100



KEY PLAN
NTS

NOTES

- WALLMOUNT TRANSFORMER ON WALL SPACE ABOVE NEW 208V, 15A3P BREAKER.
- INSTALL NEW 3#12, 1#12GRND-13C BETWEEN 600V DIST PANEL AND PRIMARY SIDE OF TRANSFORMER. INSTALL NEW 3#12, 1#12GRND-19C BETWEEN SECONDARY SIDE OF TRANSFORMER AND 15A3P ENCLOSED BREAKER. PROVIDE AND INSTALL NEW 15A3P BREAKER IN 600V DISTRIBUTION PANEL (19/21/23).
- CONTRACTOR TO LOCATE ALL UNDERGROUND SERVICES IN THE VICINITY OF THE GATE PRIOR TO EXCAVATING.
- CONTRACTOR TO CONNECT NEW REMOTE CONTROL STATION LOCATED IN GUARD TOWER (TYPICAL FOR EACH GATE) TO NEW MOTOR BOX.
- CONTRACTOR TO SUPPLY AND INSTALL ALL FIELD WIRING FOR NEW GATE MOTOR FIELD COMPONENTS. FIELD WIRING TO BE INSTALLED IN RIGID METALLIC CONDUIT BETWEEN FIELD DEVICE AND MOTOR BOX. FIELD COMPONENTS INCLUDE:
- LEFT HAND GATE OPERATOR
- STATUS LIMIT IN LOCKING COLUMN
- THREE BUTTON CONTROL STATION
- LOOP SOCKET
- MOVEMENT ALARM BUZZER
- THROUGH BEAM PHOTO CELLS
- CONTRACTOR TO SUPPLY AND INSTALL ALL CONTROL WIRING BETWEEN THE GATE MOTOR BOX AND THE NEW REMOTE MOMENTARY OPEN-CLOSE PUSHBUTTON STATION IN THE GUARD TOWER. PUSHBUTTON STATION LOCATION TO BE COORDINATED WITH OWNER.
- HEATING CABLE SHALL BE RATED AT 30W/FT, 120V. PYROTEK #B/32H03400/3411059112017/H22A/Y/N12 OR APPROVED EQUAL.
- LOCATION OF DE-ICING CONTROLLER TO BE COORDINATED ON SITE WITH OWNER. CONTROLLER TO BE INSTALLED IN LOCKABLE CABINET c/w VIEWING WINDOW.
- INSTALL DE-ICING SENSOR IN PAVEMENT SURFACE. SENSOR SHOULD BE INSTALLED ADJACENT TO GATE OUTSIDE OF VEHICLE TRAVEL PATH. EXACT LOCATION OF DE-ICING SENSOR TO BE COORDINATED ON SITE WITH OWNER.
- PROVIDE AND INSTALL NEW 15A1P BREAKER.
- NEW MOTOR BOX HEATERS TO BE CIRCUITED AS FOLLOWS:
- M-2: D1-E1-20, NEW 15A1P BREAKER
- M-4: D1-E1-02, NEW 15A1P BREAKER
- M-5: A-22, NEW 15A1P BREAKER

MOTOR CONTROL SCHEDULE

MOTOR No	DESCRIPTION	HP/kW	VOLTS, ϕ	FLA	BREAKER	FEEDER	CIRCUIT	STARTER	DISCON.	REMARKS	MOTOR No
M-1	EXTERIOR SOUTH GATE MOTOR (VMG 1)	1HP	208V, 3 ϕ	4.6A	15A3P	3#12, 1#12GRND-25C	TOWER #1 - 02/04/06	BY MANUF.	BY MANUF.	NOTE 1,2,6	M-1
M-2	INTERIOR SOUTH GATE MOTOR (VMG 2)	1HP	208V, 3 ϕ	4.6A	15A3P	3#12, 1#12GRND-25C	TOWER #1 - 01/03/05	BY MANUF.	BY MANUF.	NOTE 2&7	M-2
M-3	EXTERIOR NORTHEAST GATE MOTOR (VMG 3)	1HP	208V, 3 ϕ	4.6A	15A3P	3#12, 1#12GRND-25C	D1-E1 - 14/16/18	BY MANUF.	BY MANUF.	NOTE 1&2	M-3
M-4	INTERIOR NORTHEAST GATE MOTOR (VMG 4)	1HP	208V, 3 ϕ	4.6A	15A3P	3#12, 1#12GRND-25C	D1-E1 - 35/37/39	BY MANUF.	BY MANUF.	NOTE 1&2	M-4
M-5	NORTHWEST GATE MOTOR (VMG 5)	1HP	208V, 3 ϕ	4.6A	15A3P	3#12, 1#12GRND-25C	ENCLOSED BREAKER	BY MANUF.	BY MANUF.	NOTE 1&3	M-5
M-6	CENTER GATE MOTOR (VMG 6)	1HP	208V, 3 ϕ	4.6A	15A3P	3#12, 1#12GRND-25C	X - 01/03/05	BY MANUF.	BY MANUF.	NOTE 3,5,7	M-6
M-7	SOUTH SALLYPORT WEST GATE MOTOR (VMG 7)	1HP	208V, 3 ϕ	4.6A	15A3P	3#12, 1#12GRND-25C	ED - 11/13/15	BY MANUF.	BY MANUF.	NOTE 3&7	M-7
M-8	SOUTH SALLYPORT EAST GATE MOTOR (VMG 8)	1HP	208V, 3 ϕ	4.6A	15A3P	3#12, 1#12GRND-25C	ED - 14/16/18	BY MANUF.	BY MANUF.	NOTE 3&7	M-8

MOTOR CONTROL NOTES:

- CONTROLLED BY KEYED OPERATOR STATION AND EXISTING REMOTE CONTROL DEVICES.
- RE-USE EXISTING 15A3P BREAKER.
- CONTRACTOR TO VERIFY SOURCE OF POWER SUPPLY.
- GATE MOTOR POWER CONDUIT TO BE USED FOR MOTOR POWER & MOTOR BOX HEATER.
- CIRCUITING TO BE CONFIRMED ON SITE.
- CONTROLLED BY TOUCHSCREEN IN GUARD TOWER.
- CONTROLLED BY TOUCHSCREEN IN UNIT 6.