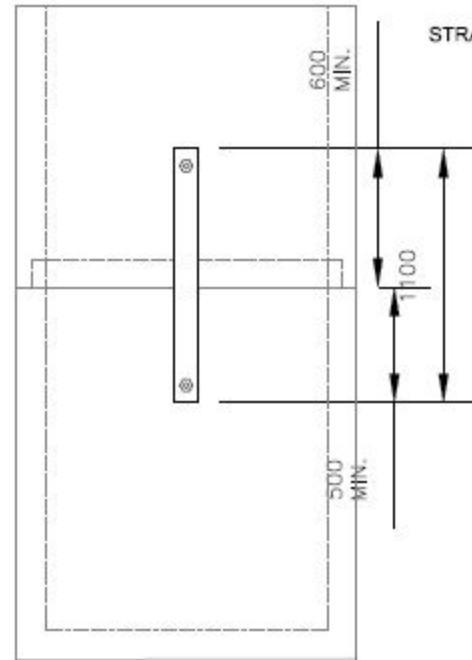
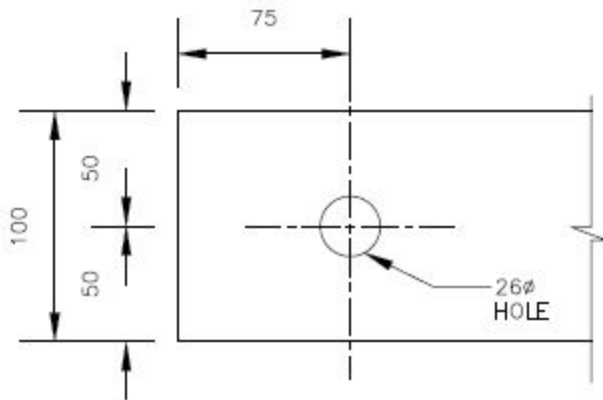


END VIEW

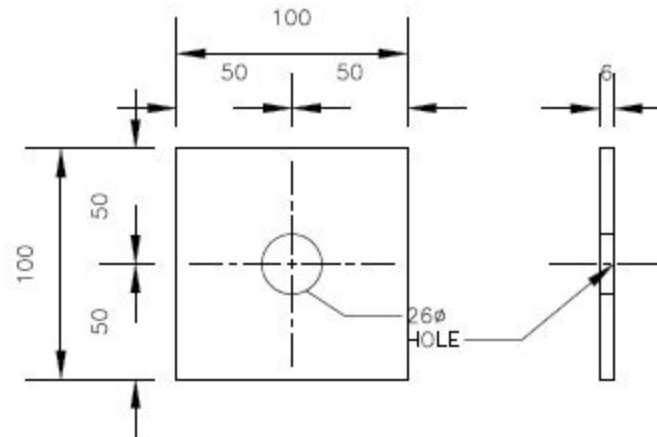


STRAP TO CONNECT EACH SIDE OF ALL JOINTS

1. 26mm 304 STAINLESS STEEL THREADED ROD EMBEDDED 105mm WITH HILTI HIT HY 150 ANCHOR, OR EQUIVALENT, AND INSTALLED AS PER MANUFACTURERS INSTRUCTIONS
2. 100mm X 6mm 304 STAINLESS FLAT BAR TO BE USED FOR STRAPPING



TENSION BAR  
NOT TO SCALE



WASHER  
NOT TO SCALE

**MANHOLE RESTRAINING STRAPS**  
N.T.S.