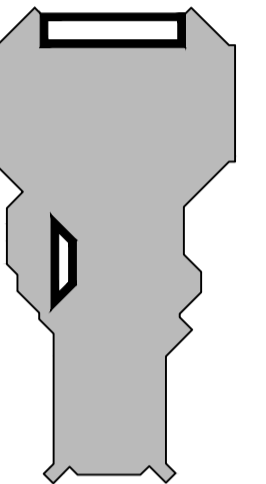




300 - 150 Katimavik Road, Ottawa, Ontario, K2L 2N2  
T: 613-831-7293 | F: 613-831-3812 | www.fsaeng.com



Contractor to verify all dimensions & conditions on site and immediately notify the departmental representative of all discrepancies.

2	ISSUED FOR TENDER	2017-12-21
1	FOR REVIEW	2017-11-17

revisions	description	date
A	A detail no. du detail	
B	B location drawing no. sur dessin no.	
C	C drawing no. dessin no.	

project

**RÉFECTION DE TOITURE 2017**  
**ROOF REPLACEMENT**

251 SIR FREDERICK BANTING DRIVEWAY,  
OTTAWA, ONTARIO

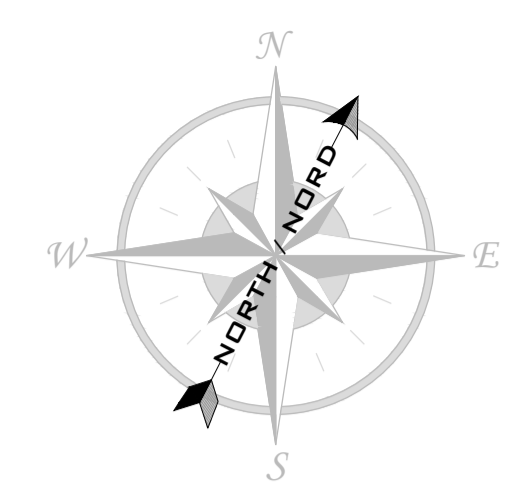
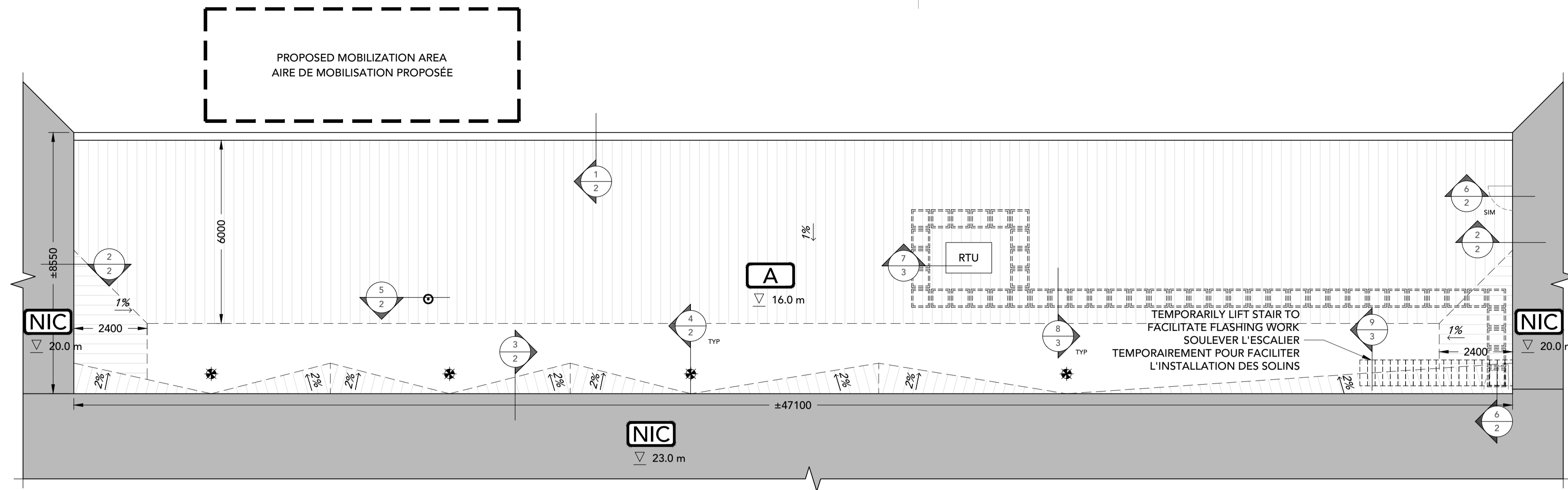
drawing

**ROOF PLAN**  
**PLAN DU TOIT**

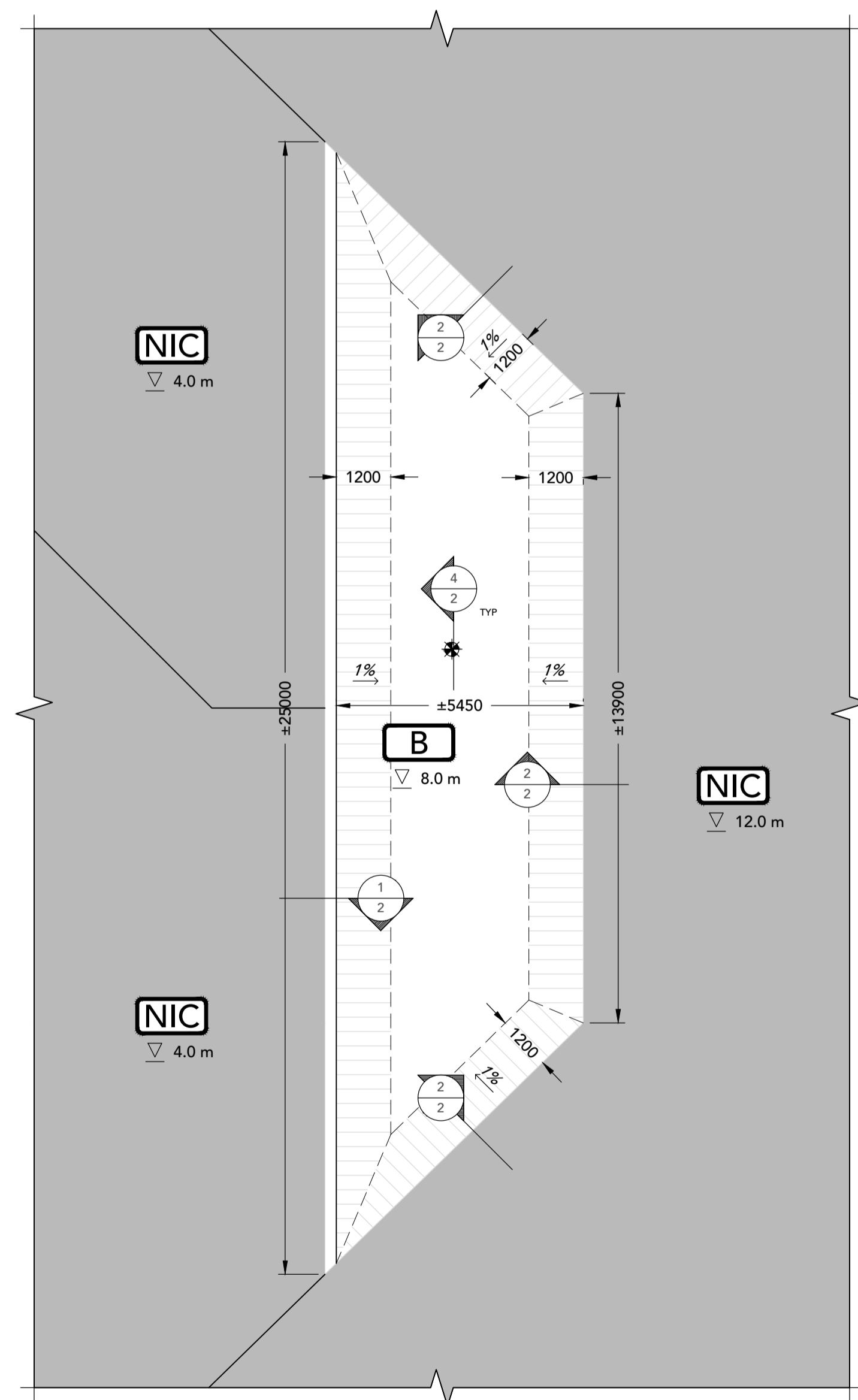
Designed By	MICHEL PAULIN	Conçu par
Date		(yyyy/mm/dd)
Drawn By	ZAYN BAKSH	Dessiné par
Date		(yyyy/mm/dd)
Reviewed By	JOHN CALLENDER	Examiné par
Date		(yyyy/mm/dd)
Approved By	JOHN CALLENDER	Approuvé par
Date		(yyyy/mm/dd)
Tender		Soumission
Project Manager	JOHN CALLENDER	Administrateur de projets
Project no.		No. du projet

17452DO

Drawing no. 1

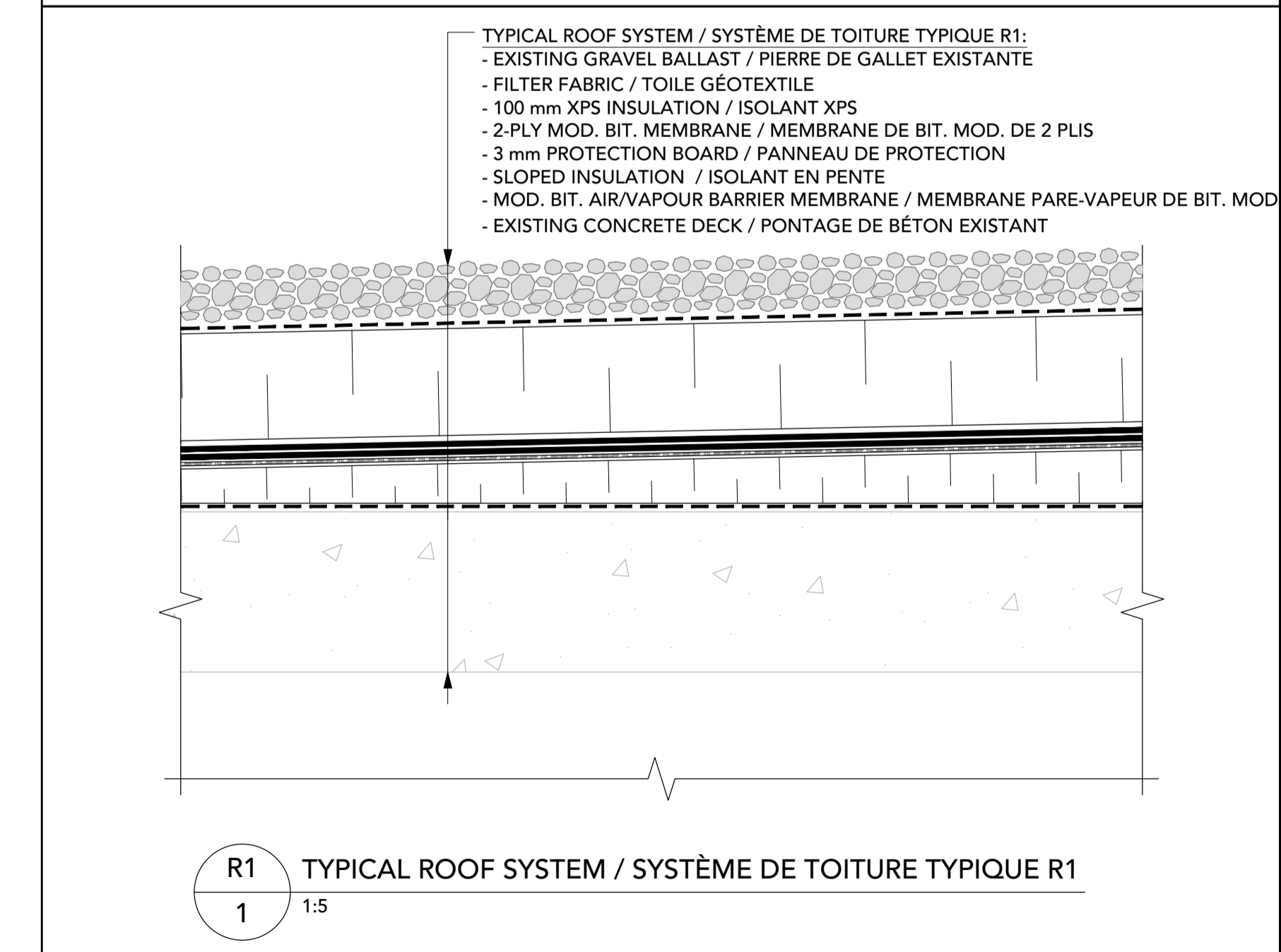
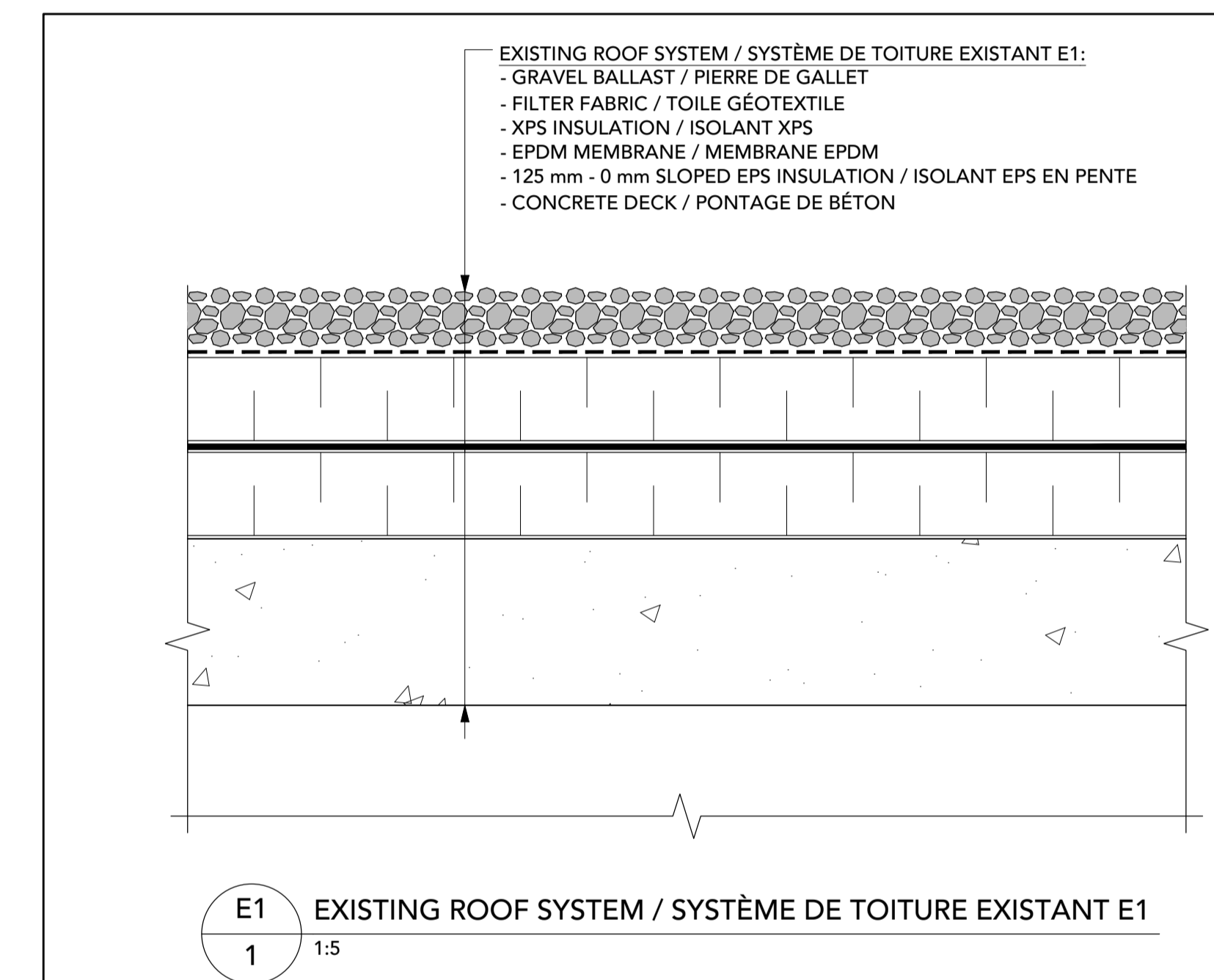


ROOF PLAN / PLAN DU TOIT  
1:100



ROOF PLAN / PLAN DU TOIT  
1:100

LEGEND / LÉGENDE	
SYMBOL / SYMBOLE	DESCRIPTION
RTU	BUILT-IN ROOFTOP UNIT UNITÉ MÉCANIQUE ENCASTRÉE
CONCRETE PAVES	CONCRETE PAVER DALLE DE BÉTON
2%	EXTENT AND DIRECTION OF SLOPED INSULATION SURFACE AND INCLINATION OF THE INSULATION SLOPE
○	PLUMBING VENT ÉVENT DE PLOMBERIE
*	ROOF DRAIN DRAIN DE TOIT
XX/XX	ROOF NUMBER AND ELEVATION NUMÉRO DU TOIT ET ALTITUDE
STAIRS	STAIRS ESCALIERS





300 - 150 Katimavik Road, Ottawa, Ontario, K2L 2N2  
T: 613-831-7293 | F: 613-831-3812 | www.fsaeng.com

Contractor to verify all dimensions & conditions on site and immediately notify the departmental representative of all discrepancies.

2	ISSUED FOR TENDER	2017-12-21
1	FOR REVIEW	2017-11-17

revisions	description	date
A	A detail no. no. du detail	A
B	B location drawing no. sur dessin no.	B C
C	C drawing no. dessin no.	

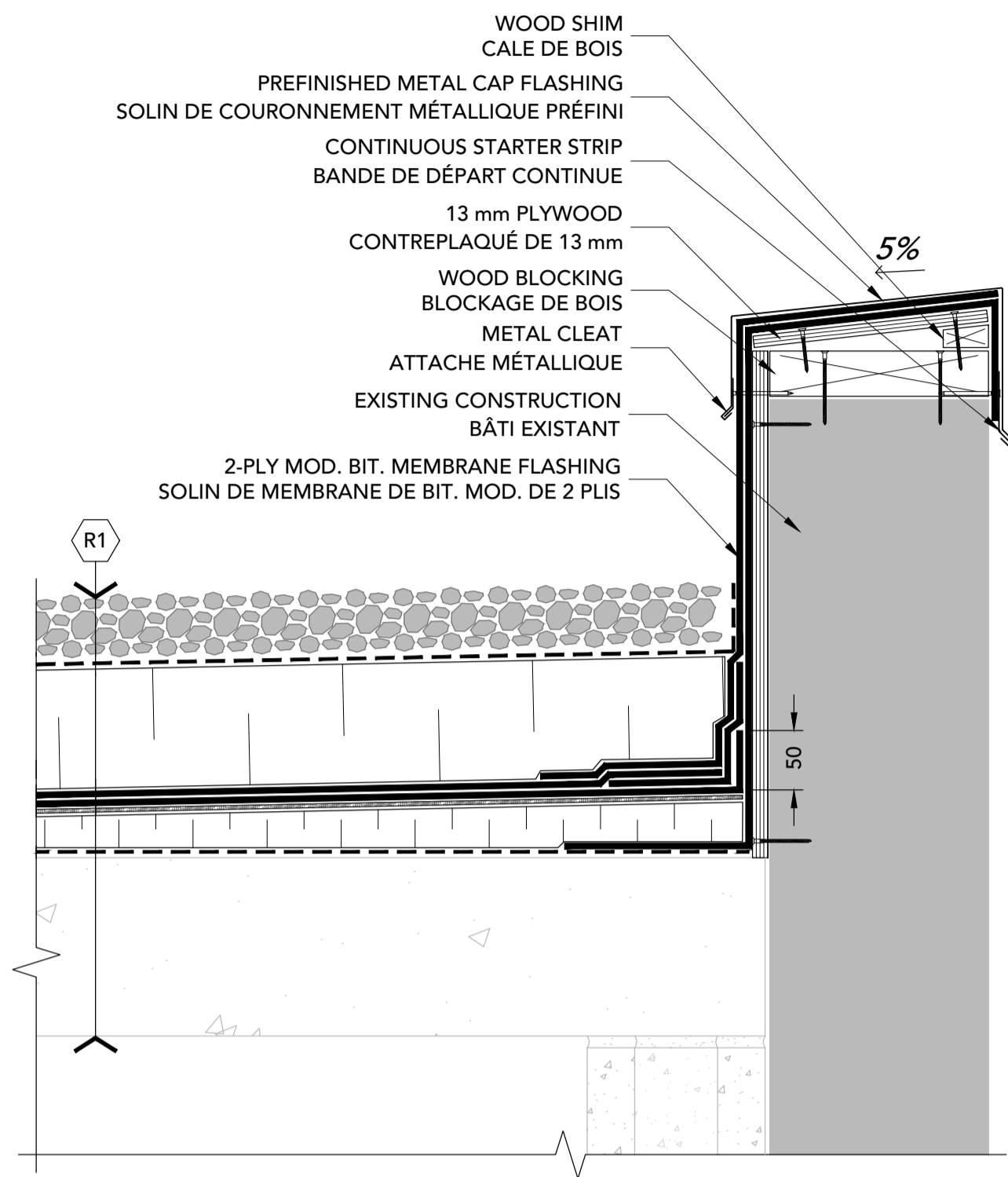
project / projet  
**RÉFECTION DE TOITURE 2017**  
**ROOF REPLACEMENT**  
251 SIR FREDERICK BANTING DRIVEWAY,  
OTTAWA, ONTARIO

drawing / dessin  
**DETAILS**  
**DÉTAILS**

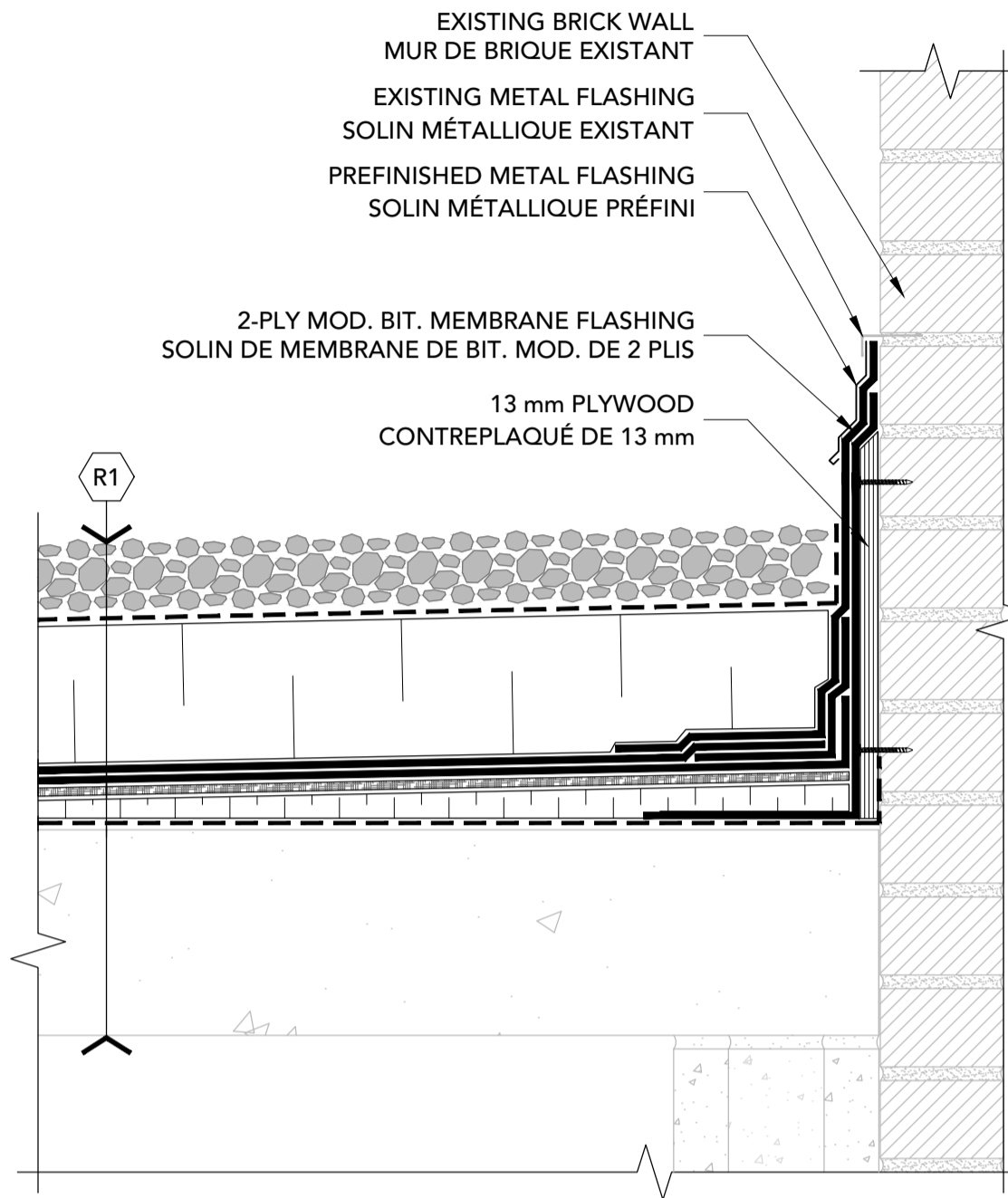
Designed By	MICHEL PAULIN	Conçu par	
Date		(yyyy/mm/dd)	
Drawn By	ZAYN BAKSH	Dessiné par	
Date		(yyyy/mm/dd)	
Reviewed By	JOHN CALLENDER	Examiné par	
Date		(yyyy/mm/dd)	
Approved By	JOHN CALLENDER	Approuvé par	
Date		(yyyy/mm/dd)	
Tender		Soumission	
Project Manager	JOHN CALLENDER	Administrateur de projets	
Project no.		No. du projet	

17452DO  
Drawing no. / No. du dessin

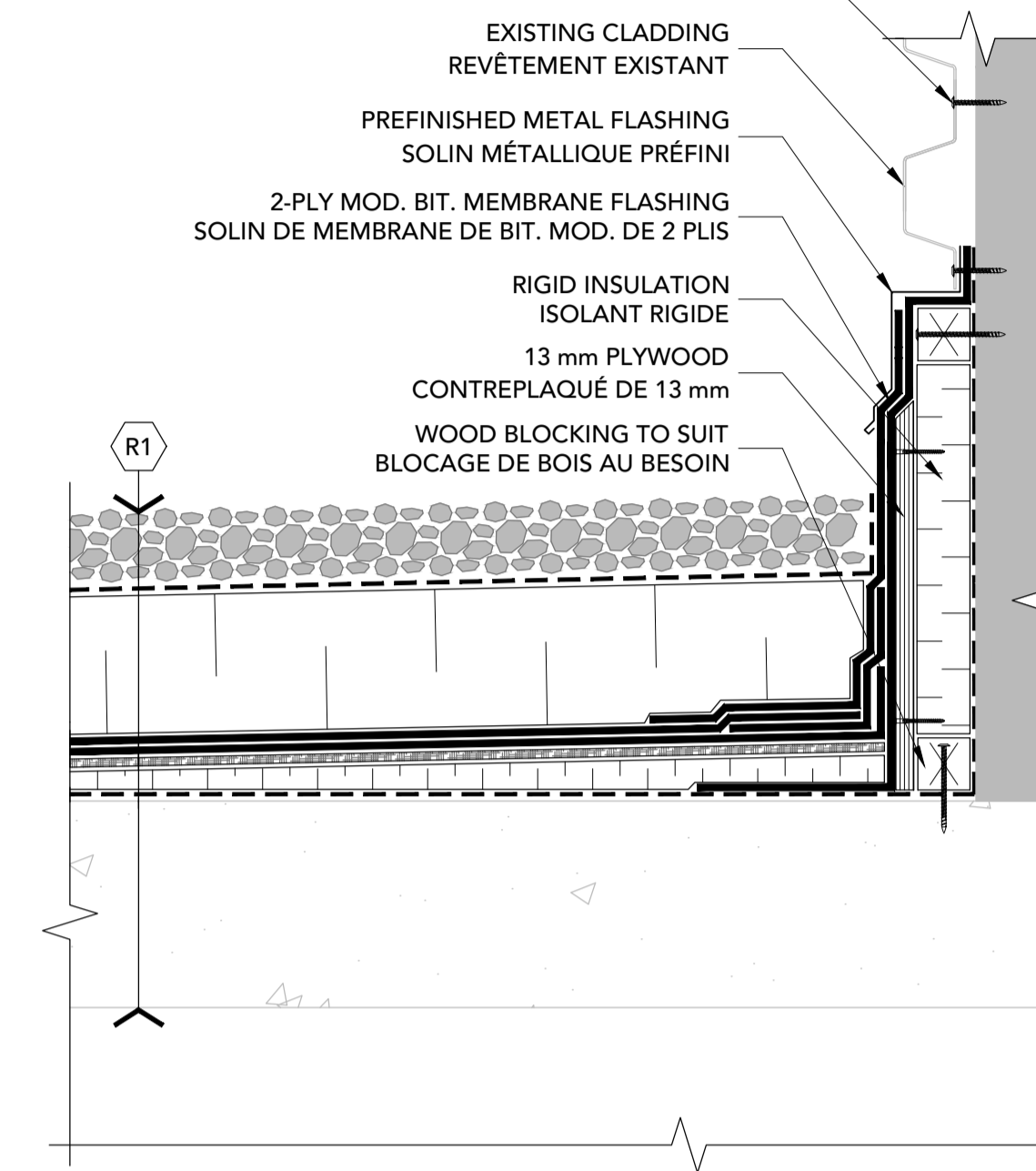
TEMPORARILY REMOVE AND REINSTATE FASTENERS TO FACILITATE INSTALLATION OF NEW FLASHING  
ENLEVER LES VIS DU REVÊTEMENT MÉTALLIQUE TEMPORAIREMENT POUR FACILITER L'INSTALLATION DU NOUVEAU SOLIN



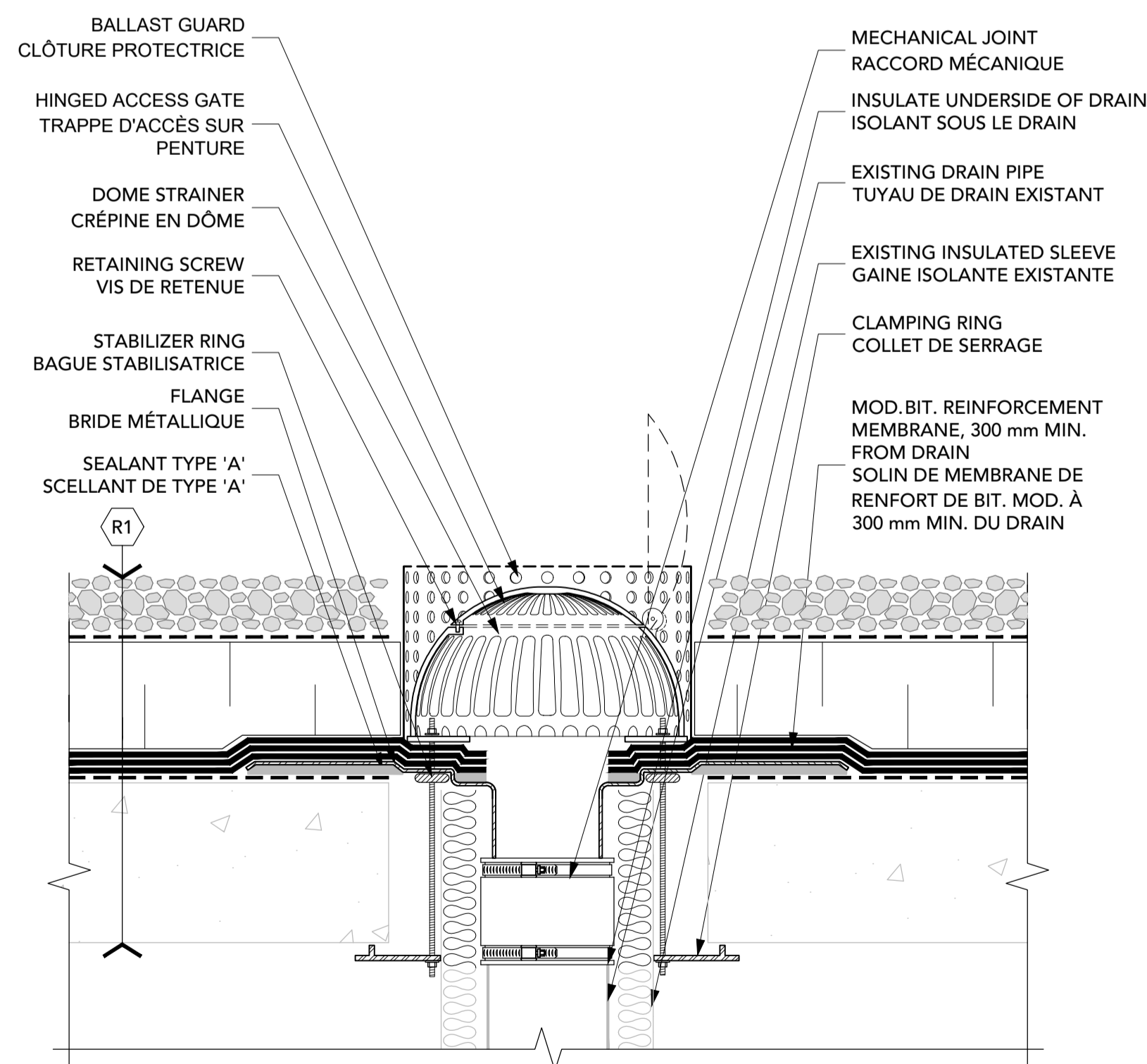
1 PARAPET  
2 1:5



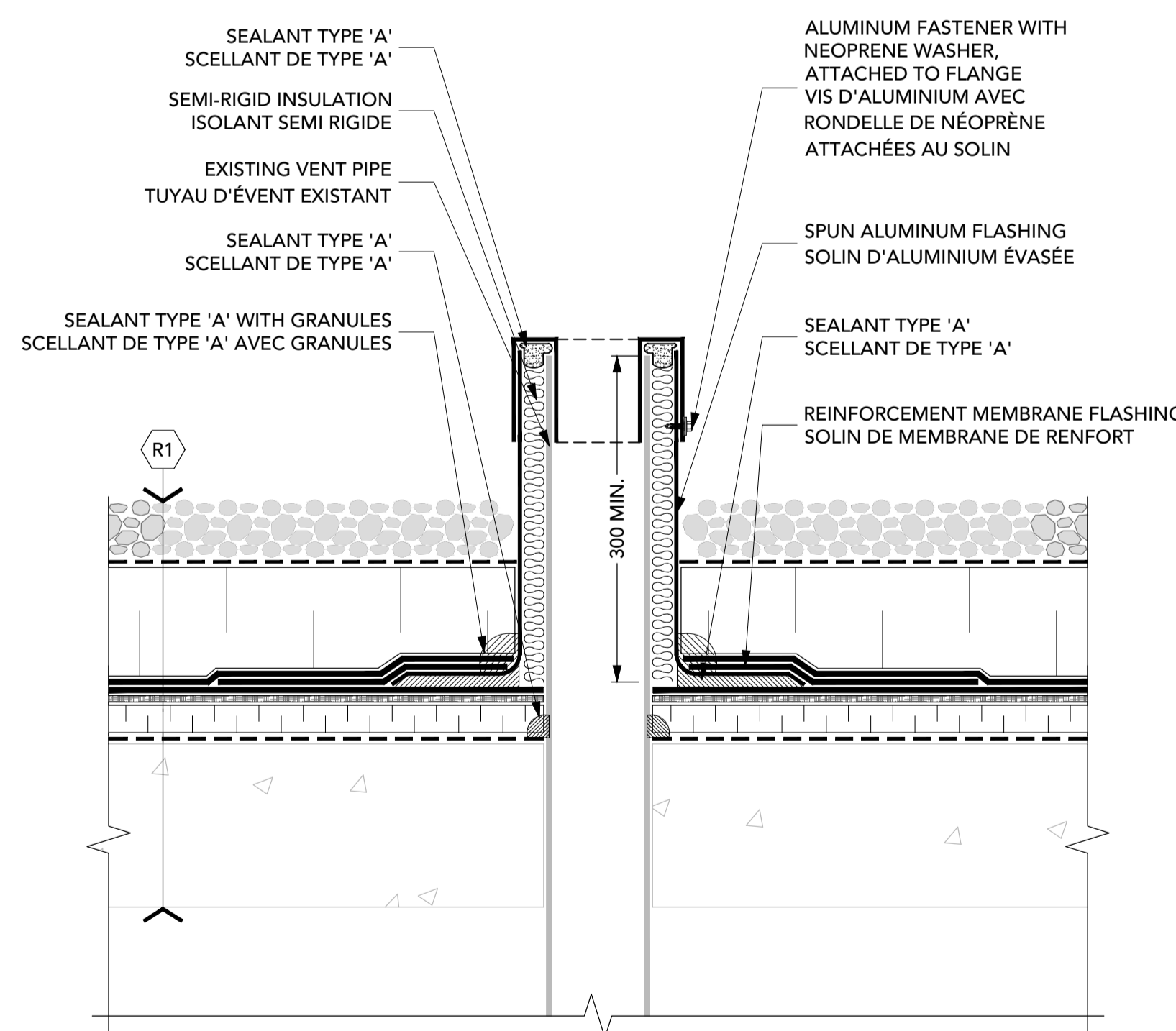
2 WALL TIE-IN / TERMINAISON MURALE  
2 1:5



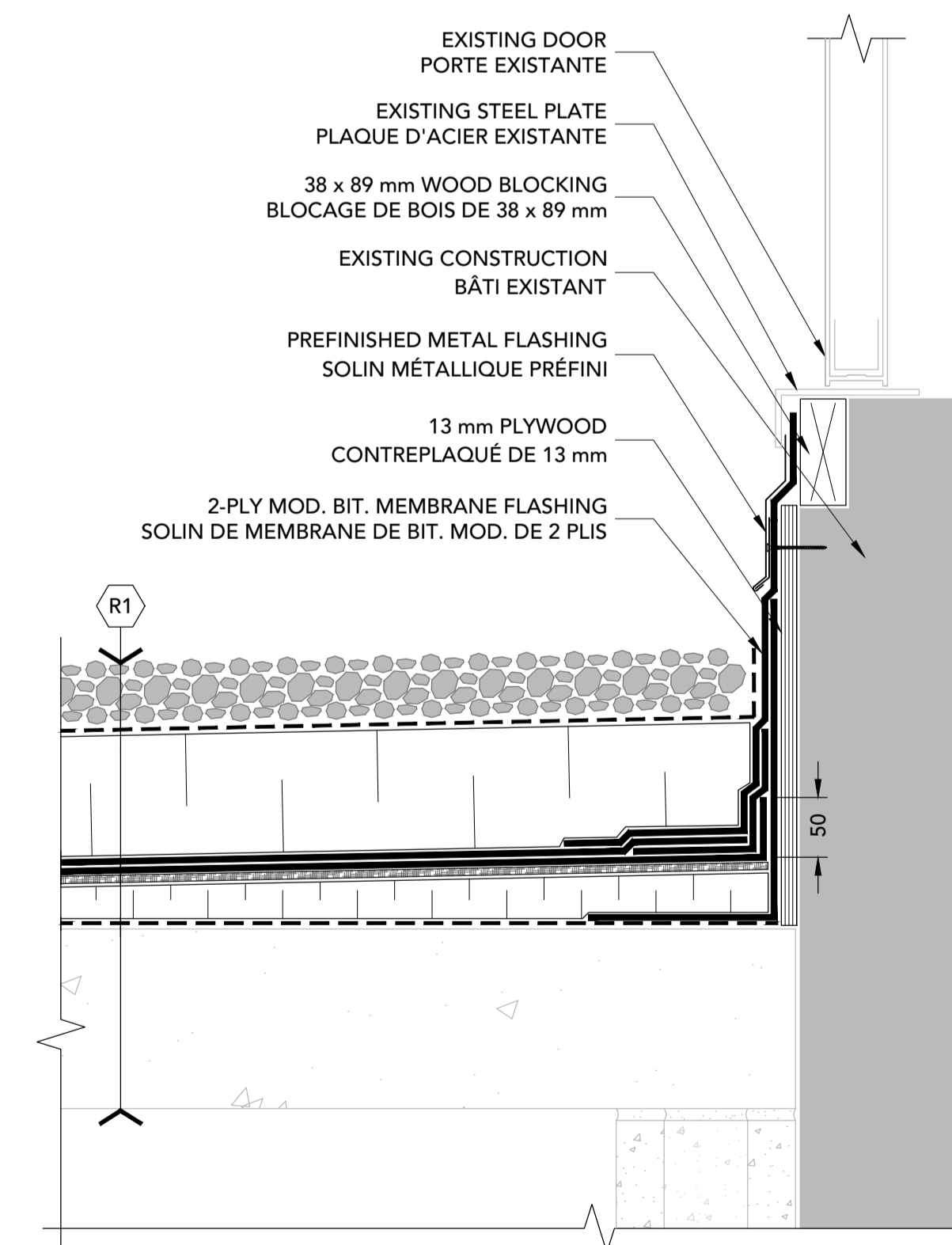
3 WALL TIE-IN / TERMINAISON MURALE  
2 1:5



4 DRAIN  
2 1:5



5 PLUMBING VENT / ÉVENT DE PLOMBERIE  
2 1:5



6 DOOR SILL / SEUIL DE PORTE  
2 1:5



300 - 150 Katimavik Road, Ottawa, Ontario, K2L 2N2  
T: 613-831-7293 | F: 613-831-3812 | www.fsaeng.com

Contractor to verify all dimensions & conditions on site and immediately notify the departmental representative of all discrepancies.

2	ISSUED FOR TENDER	2017-12-21
1	FOR REVIEW	2017-11-17

revisions	description	date
-----------	-------------	------

A	A detail no. / no. du détail	A
B	B location drawing no. / sur dessin no.	B C
C	C drawing no. / dessin no.	

project projet

**RÉFECTION DE TOITURE 2017**  
**ROOF REPLACEMENT**  
251 SIR FREDERICK BANTING DRIVEWAY,  
OTTAWA, ONTARIO

drawing dessin

**DETAILS**  
**DÉTAILS**

Designed By MICHEL PAULIN Conçu par  
Date (yyyy/mm/dd)

Drawn By ZAYN BAKSH Dessiné par  
Date (yyyy/mm/dd)

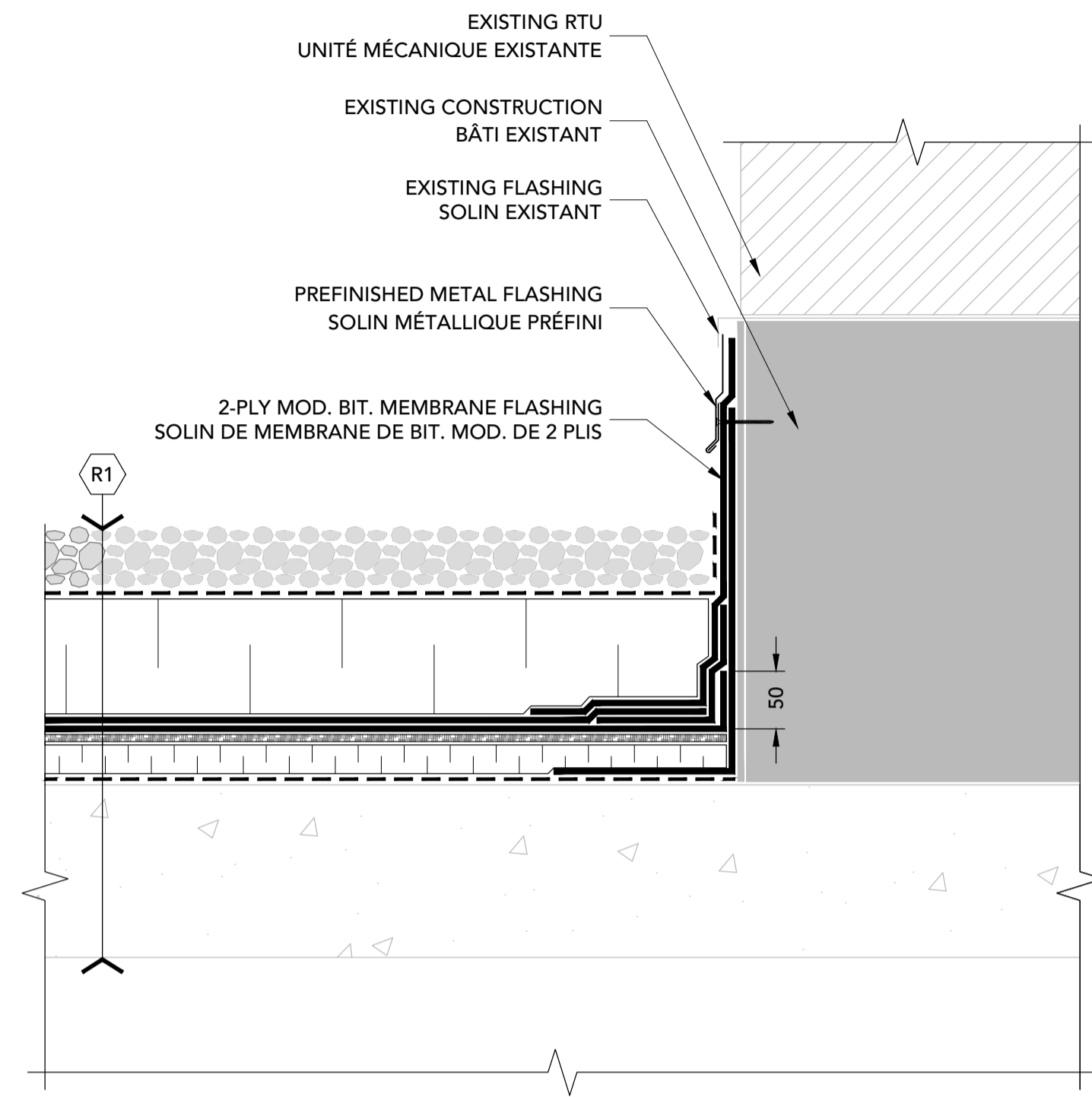
Reviewed By JOHN CALLENDER Examiné par  
Date (yyyy/mm/dd)

Approved By JOHN CALLENDER Approuvé par  
Date (yyyy/mm/dd)

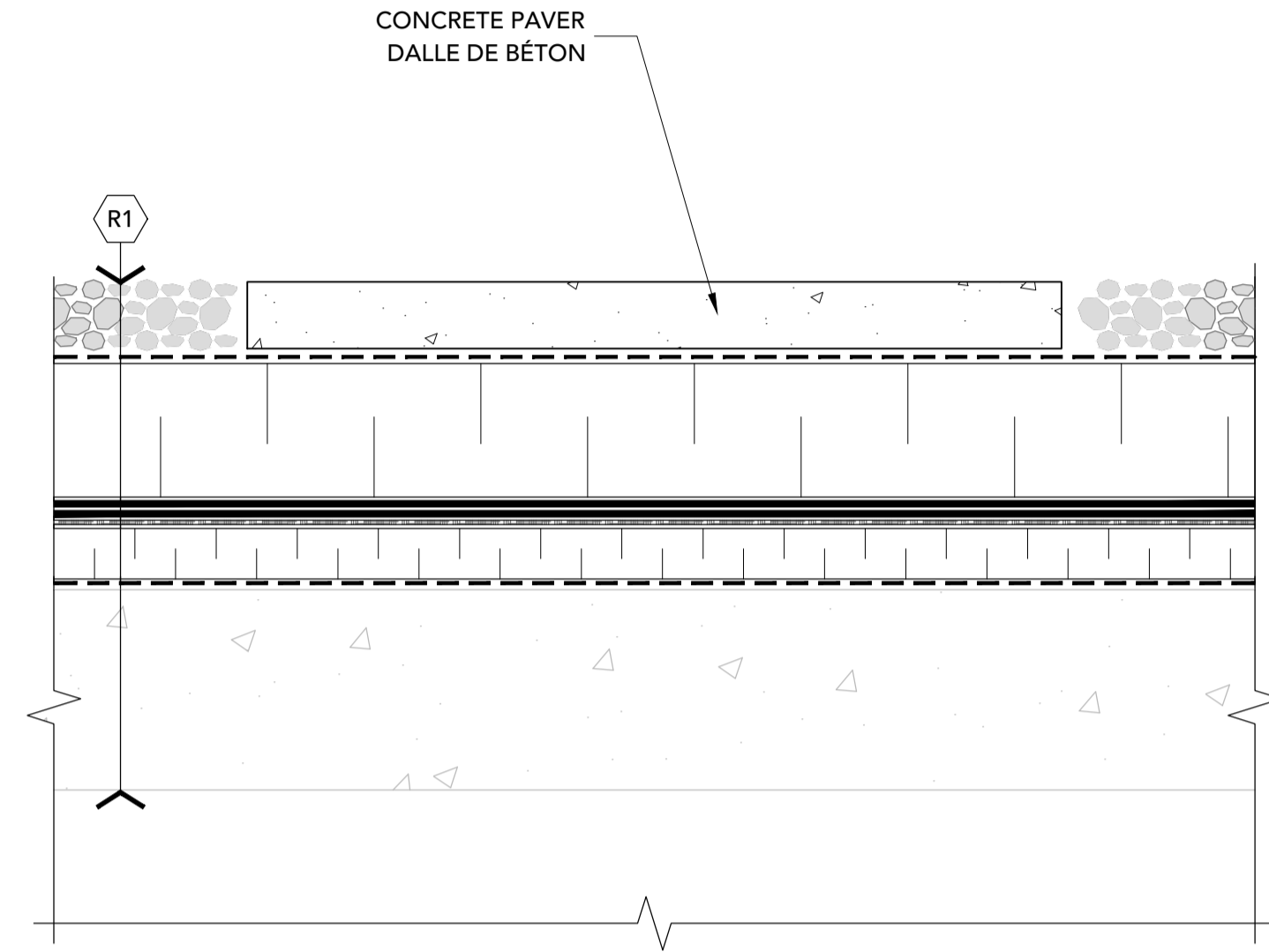
Tender Soumission  
Project Manager JOHN CALLENDER Administrateur de projets

Project no. 17452DO No. du projet

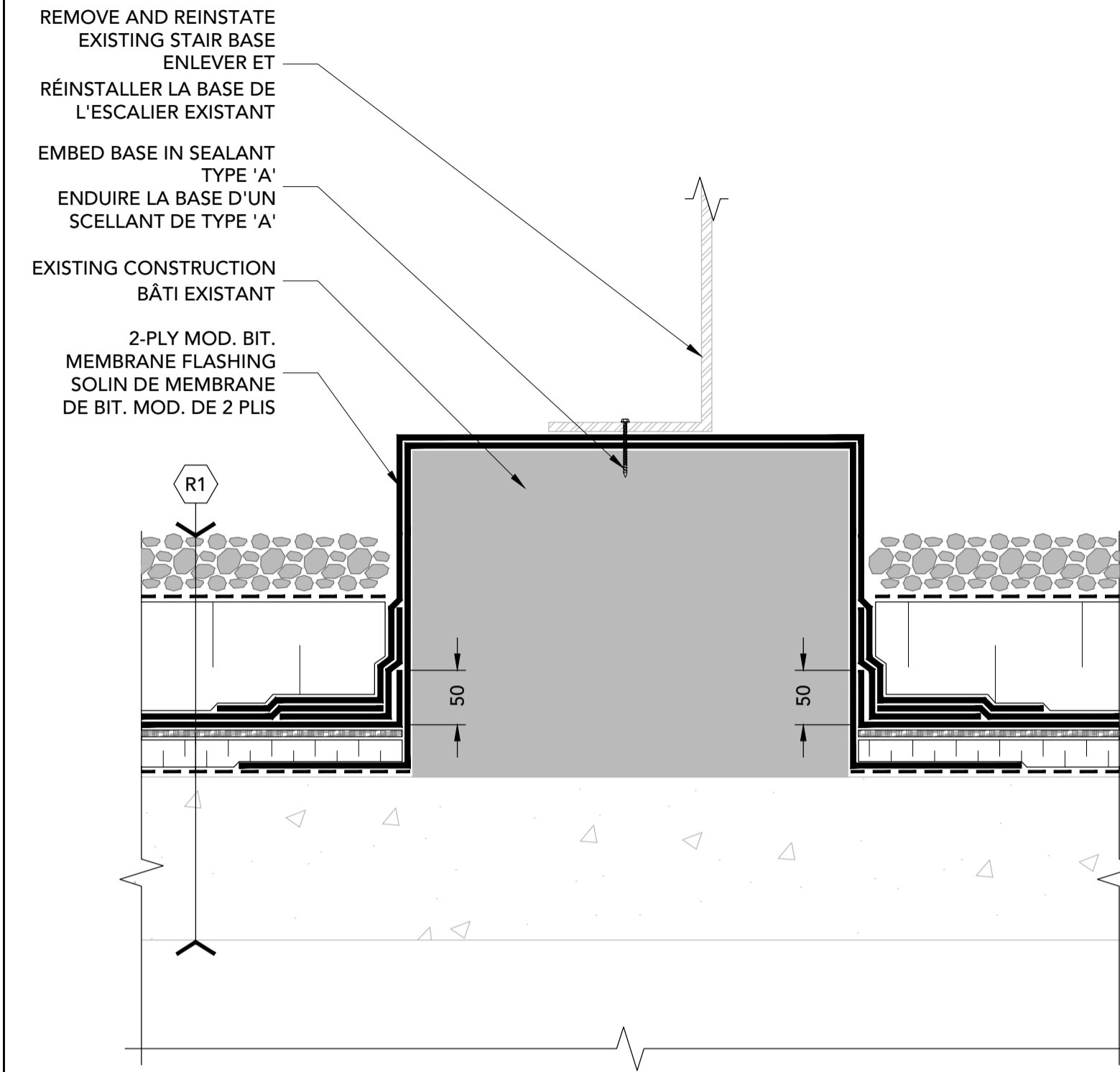
Drawing no. 3 No. du dessin



7 RTU SUPPORT / SUPPORT DE L'UNITÉ MÉCANIQUE  
3 1:5



8 CONCRETE PAVER / DALLE DE BÉTON  
3 1:5



9 STAIR BASE / BASE DE L'ESCALIER  
3 1:5

RESERVED  
RÉSERVÉ

RESERVED  
RÉSERVÉ

RESERVED  
RÉSERVÉ