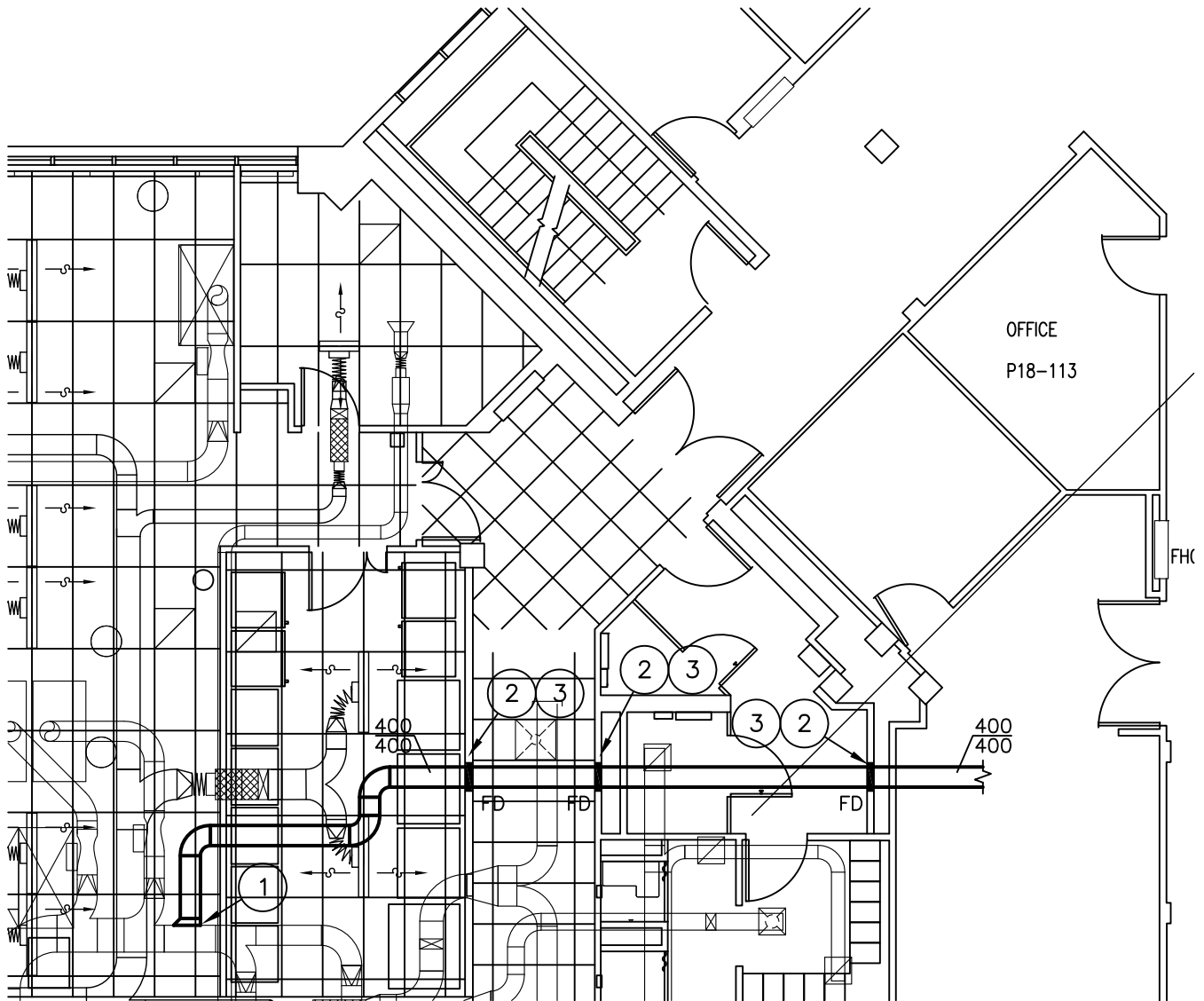


- ① CONNECT NEW 400/400 EXHAUST AIR DUCT TO EXISTING IN THIS APPROXIMATE LOCATION. EXACT LOCATION TO BE DETERMINED ON SITE.
- ③ PROVIDE NEW FIRE DAMPER C/W REQUIRED ACCESS HATCHES.



Consultant



Project

NAFC P-18 SNORKEL HOOD EXTENSION

Title

PART FLOOR PLAN MECHANICAL LAYOUT

Dwn. By:

S.M.

Date:
14/02/18

Dwg. #:
MSK-1

Chk'd/App'r'd By:

H.F.

Proj. #:
F6879-179230

Scale:
1:100