



Royal Canadian Mounted Police
Gendarmerie royale du Canada

Doc. no: G.S. 1045-305

Date: 2017-07-25

Specification

Shirt, Blue, F.R. Special Duty

This document has 21 pages including the drawings.

This document was created in English.

The document is available in English and French.

English/Anglais
Français/French

The photograph on this page is for reference only.



Modifications

Date	Para. No's	Modifications
2002-10-28		Original Specification
2002-12-03	Scale of Measurements	Scale of Measurements amended to reflect patterns.
2003-06-17	Entire Specification Para. 4.1.5 Appendix "A"	Nomenclature changed to viewing sample. Hook & loop tape description changed & certification added. Patterns changed.
2004-02-11	Para. 4.3.6 Para. 7.7 Scale of Measurements Drawing #2 Front view Drawing #3 Drawing #4	Clarify military strap button on cuff. Change heading to cuff length. Changed low visibility to Badge, Shoulder, Subdued. Neckline circumference heading modified. Changed cuff circumference to cuff length. Remove reference to Dimension "A" Armhole stitching corrected to show on body Added measurement for pen pocket.
2006-07-28	Table I Para. 4.1.5	Removed reference to colour number and added to match viewing sample. Hook & loop requirements updated.
2009-07-24	Entire Specification	Specification re-written and re-issued to change nomenclature & update technical information. Patterns, specs and drawings updated to ensure consistency.
2013-07-17	Para. 2.10 Para.2.11 Para. 4.1.4.1, 4.1.4.2 & 4.1.4.3 Para. 4.1.5 Para. 4.3.17 Table I – Note: for information purposes. Para. 4.3.15 -Appendix C Appendix D	Updated CGSB standard. Added standard for Aramid spun thread. Updated thread as per industry standard. Changed validation certificate to Certificate of Compliance. Specified date in numeric format. Removed reference to Difco Performance Fabrics as they are no longer in business. Added detailed care instruction sheet. Added Certification and Test data criteria.
2015-02-27	Para. 4.1.5 Para. 4.3.17 Appendix D	Updated hook and loop tape information. Specified name in label to match specification name. Removed Appendix D
2017-07-25	Entire Specification Para. 1.1 Para. 2.1-2.6 Para. 4.1.1 Para. 4.3.17	Reformatted Specification. Modified title. Added stock number. Updated specifications. Modified Shell Material to be GAM. Modified Marking label information.

	Para. 6, Scale of Measurements Appendix A & B Table I	Update Chest and Hem on Scale of Measurements to be total circumference instead of half measurements. Modified wording to remove reference to Nomex [®] IIIA. Deleted Table I because fabric is now GAM.

RCMP VIEWING SAMPLE

A viewing sample, when available, will be supplied to the successful bidder.

This will be used for the guidance of the manufacturer in all factors not covered by this specification or referred to therein. Variation from the specification may appear in the sample in which case the specification shall govern.

It may be obtained from:

Royal Canadian Mounted Police
ATTN: Uniform and Equipment Program
(440 Coventry Road, Warehouse Building)
1200 Vanier Parkway
Ottawa, Ontario
K1A 0R2

It will be sent “prepaid” and is to be returned “prepaid”.

The viewing sample shall be returned to the RCMP in the same condition as received by the manufacturer. Lost or damaged viewing samples shall be replaced by an identical item or the RCMP shall be reimbursed for the cost of an acceptable replacement.

SPECIFICATION
Shirt, Blue, FR, Special Duty

1. Definition

- 1.1 This specification shall govern the manufacture and inspection of Shirt, Blue, FR, Special Duty. The specific item covered under this specification with stock number is as follows:
- i. 6055 Shirt, Blue, FR, Special Duty / Chemise de fonction spéciale bleue ignifuge
 - ii. 6056-100 Shirt, Blue, FR, Special Duty, Special / Chemise de fonction spéciale bleue ignifuge, tailles spéciales
- 1.2 This specification, pattern, drawing, viewing sample, or other information issued in connection therewith, may only be used for specific enquiries, solicitations, or orders placed on behalf of the Royal Canadian Mounted Police.
- 1.3 This specification supersedes all previous specifications for Shirt, Combat, FR Blue and Shirt, Blue, FR, Special Duty.
- 1.4 This specification has been translated into French from this original English language document.

2. Applicable Specifications

- 2.1 The following publications are applicable to this specification and to the issues in effect on the date of the solicitation, unless otherwise specified.
- 2.2 ISO 4915, International Standard for Textiles - “Stitch Types”.
- 2.3 ISO 4916:1991, International Standard for Textiles - “Seam Types”.
- 2.4 RCMP Specification, G.S.1045-266, Badges, Woven. Item - Badge, Shoulder, Subdued Badge (stock # 2141-100).
- 2.5 CAN/CGSB 86.1-2003, Care Labelling of Textiles.
- 2.6 A-A-55217B, Thread Aramid, Spun Staple

3. **General Requirements**

- 3.1 The article or material covered by this specification shall be free from material and manufacturing defects that may affect its appearance or serviceability. In all particulars not covered by this specification or contract documents, production shall be equivalent in all respects to the pattern and viewing sample.
- 3.2 **Design** – The Shirt, Blue, FR, Special Duty shall be constructed from a fire resistant material and shall incorporate an inside sleeve strap designed to keep the long sleeve rolled up in a short sleeve position as desired. The overall design shall incorporate a hidden button front, chest pockets with flaps and military strap buttons for closure. It shall be designed in accordance with the patterns and attached scale of measurements and drawings which form part of this specification.

4. **Detail Requirements**

4.1 **Components**

- 4.1.1 **Shell** - The shell material is RCMP stock item number 9157-000, Poplin, Navy, FR navy in colour and shall be purchased from the RCMP.
- 4.1.2 **Shoulder Badges** – The shoulder badges are RCMP stock item number 2141-100 Badge, Shoulder, Subdued Blue, and shall be purchased from the RCMP.
- 4.1.3 **Buttons** – The buttons shall be 19 mm diameter, military strap type of nylon composition, black in colour.
- 4.1.4 **Thread**
- 4.1.4.1 **Thread for Stitching** – 100% Craq Spun Nomex® thread; 27 Tex; navy blue to match the shell material, meeting A-A-55217B Type II.
- 4.1.4.2 **Thread for Serging** – 100% Spun Nomex® thread; 27 Tex; navy blue to match the shell material, meeting A-A-55217B Type I.
- 4.1.4.3 **Thread for Buttonholes & Bar-Tacks** – 100% Craq Spun Nomex® thread; 40 Tex; navy blue to match the shell material, meeting A-A-55217B Type II.

- 4.1.5 **Hook and Loop Tape** – The hook and loop tape shall be woven nylon, black in colour, 25 mm wide, with a high life cycle. The combined hook and loop shall have no less than 8 P.S.I. length-wise shear strength with initial peel strength of not less than 1 P.I.W. when tested to ASTM D5169-98 (2015), standard test method for shear strength [dynamic method] of hook and loop touch fasteners and ASTM D5170-98 (2015), standard test method for peel strength [“T” method] of hook and loop touch fasteners.”
- 4.2 **Size and Dimensions** – Shirt, Blue, F.R., Special Duty to this specification shall be supplied in the sizes specified by the R.C.M.P. and to the dimensions given in the scale of measurements and drawings, which form part of this specification. The garment components shall be shaped, dimensioned and positioned in accordance with the pattern requirements as outlined in Appendix A forming part of this specification.
- 4.3 **Construction**
- 4.3.1 **Cutting** – All component parts of the shirt shall be cut from the same piece of material and shall be cut following the grain line on the pattern piece to ensure uniformity of shade.
- 4.3.2 **Stitching** – Using the specified thread, there shall be no less than 3 and no more than 4 stitches per cm. All stitching shall be lockstitch Type 301 or lockchain stitch Type 401. The beginning and ending of all stitching shall be securely backstitched and tacked unless secured by other stitching. Where seaming, turning and stitching are required the edges shall be properly worked out before stitching. Armhole seams shall be seamed, serged, and top stitched at 6 mm. Bar tacks shall be 13 mm in length and made with no less than 18 cover stitches per tack. Care shall be taken to minimize unsightly gathering and puckering.
- 4.3.3 **Fronts**
- 4.3.3.1 **Left Front** – The left front shall be constructed in a way to form a hidden button closure. It shall have a front buttonhole flap made from material specified in Para. 4.1.1. Vertical buttonholes shall be positioned on the flap as per pattern. All short sizes shall have 5 buttonholes, all regular sizes shall have 6 buttonholes and all tall sizes shall have 7 buttonholes as outlined in the pattern. All buttonholes shall be sized to properly fit the 19 mm button as specified in paragraph 4.1.3. The left front shall be folded back to create a 5 cm wide facing and shall be top stitched with a 6 mm gauge. The buttonhole flap shall be stitched to the inside facing to create a

separation between each hole as per viewing sample. The left front shall conform in all respects to the patterns and drawings.

- 4.3.3.2 **Right Front** – The right front shall have a folded facing of 5 cm wide when finished. The facing shall be folded to the inside and pressed flat. The raw edge shall be turned inward and top stitched using a 2 mm gauge as per drawing and viewing sample. Military strap buttons, as specified in Para. 4.1.3, shall be positioned to correspond with the buttonholes. There shall be a piece of loop tape 8.5 cm x 2.5 cm for a name tag above the right front pocket flap as per pattern template and drawings.
- 4.3.4 **Chest Pockets** – There shall be two chest pockets constructed from the material specified in Para. 4.1.1. The pockets shall be a one-piece bellow, patch type, sized and positioned as per patterns. The pockets shall be applied so that the bellow faces the back of the shirt as per drawings and viewing sample. Both pockets shall have a two slot pen pocket, 6 cm wide and 15 cm deep, made from a single ply of shell material with the hem across the top. The pen pocket shall be stitched using a 2 mm gauge to the body of the shirt. Both pockets shall have two pieces of hook tape and a 19 mm military strap style button applied as per drawing #4. Three corners of the pocket shall be bar tacked as shown in drawing #4.
- 4.3.5 **Pocket Flaps** – The flaps shall be constructed of two pieces of shell material as specified in Para. 4.1.1. The side, corner and bottom edges shall be sewn and top-stitched with a 6 mm gauge. Each flap shall be stitched to the shirt front in a continuous operation and shall be bar tacked at each end. There shall be two pieces of loop tape sewn to the underside of the flap, sized and positioned as per pattern and drawings. The chest pocket flaps shall be constructed and positioned as per the patterns, drawings and viewing sample.
- 4.3.6 **Strap (Military Buttons)** – All straps shall be made from shell material, as per Para 4.1.1, inserted through a military style button as per Para. 4.1.3. and bar tacked in place. They shall be positioned on the right front as per pattern, one on each upper sleeve and two on each cuff as shown in the drawings. Where one button is required, the strap shall be 4 cm finished in length and where two buttons are required the strap shall be 5 cm finished in length. All buttons shall conform to drawings and viewing sample.
- 4.3.7 **Back** – The completed back panel shall have a double layer yoke. The yoke shall be applied to the top of the back panel and shall be top stitched using a 2 mm gauge. The back panel shall have two pleats positioned as per the pattern, sewn in at the

yoke seam. The back panel shall conform in all respects to the pattern and drawings.

- 4.3.8 **Shoulder Straps** – The straps shall be made of shell material as specified in Para. 4.1.1, sized and dimensioned as per patterns and drawing #3. They shall be seamed, turned and stitched or creased and stitched using a 6mm gauge and placed as per pattern notch. The completed shoulder straps shall be sewn into the armhole seam, parallel with the shoulder seam. The straps shall be secured at the pointed end with hook and loop tape as specified in Para. 4.1.5. The hook tape shall be sewn to the underside of the strap and the loop tape on the shoulder seam. They shall be sized and positioned in accordance with the patterns and drawings. Care shall be taken to ensure that the straps shall lie flat when fastened.
- 4.3.9 **Sleeves** – Both one-piece sleeves shall be made from material as specified in Para. 4.1.1 with a placket opening and cuff as per the pattern and drawing #3. The placket shall be 2.5 cm wide with a finished outside length of 19 cm. The sleeve shall have an elbow patch pocket secured by hook and loop tape designed to hold removable padding. There shall be a sleeve strap with a buttonhole sewn to the inside of the sleeve as per pattern designed to hold the rolled up sleeve in place. Dimensions shall be as per pattern and placement shall be 1cm below the sleeve military button as per drawing #3 and viewing sample. When the sleeve is in a rolled up position it shall fasten to the military strap button sewn to the outside of the sleeve as per patterns and drawing #3. The sleeve shall be positioned and constructed as per patterns, drawings and viewing sample.
- 4.3.10 **Joining Sleeves, Underarm and Side Seams** – The join shall be by means of a seamed and serged safety stitch. The armhole shall be top stitched using a 6 mm gauge to the body of the shirt as per drawing #3.
- 4.3.11 **Sleeve Cuff** – The cuffs shall be made from two plies of shell material dimensioned as per pattern and top stitched using a 6 mm gauge. The cuff shall have one buttonhole and two military strap buttons for horizontal adjustment. The buttonhole and strap buttons shall be centered on the cuff as per pattern. The placket shall lay flat when the first button is closed. The cuff shall be positioned and constructed as per pattern, drawings and viewing sample.
- 4.3.12 **Bottom Hem** – The bottom edge of the shirt front and back shall be hemmed by turning in the raw edge, folding this edge under and stitching.

- 4.3.13 **Collar** – The collar shall be constructed from two plies of shell material as specified in Para. 4.1.1. The collar shall be seamed, the corners clipped, turned and top stitched using a 6mm gauge. The collar shall be constructed, dimensioned and positioned as per the patterns.
- 4.3.14 **Shoulder Badges** – The Badge, Shoulder, Subdued Shoulder Badge specified in Para. 4.1.2 shall be centered on the sleeve head below the shoulder seam as per pattern and attached securely with one row of stitching all around.
- 4.3.15 **Instruction Sheet** – Each completed shirt shall have an instruction sheet attached to the garment and/or folded and inserted into the pocket. Outlining the “Manufacturers Care Instructions” for the fire resistant materials used. See Appendix B.
- 4.3.16 **Identification Label** – Each shirt shall have a durable blank label 7.5 cm x 2 cm applied separately below the marking and cleaning label used for the inscription of the wearers’ name.
- 4.3.17 **Marking & Cleaning Instructions Label** – Each shirt shall have a durable label positioned and sewn to the inside back. The text shall be permanent inks of a contrasting colour and shall withstand the life of the garment with no apparent change in appearance. All text except for the RCMP stock number and size shall be in size 6 font. The RCMP stock number and size shall appear in size 8 font. The manufacturer’s identification shall not appear anywhere on the garment except where indicated on the label. The label shall contain the following information in English and French:
1. Item name in English as written in Para. 1.1.
 2. Item name in French as written in Para. 1.1.
 3. RCMP stock number - reference contract documents. (Ex. 4005 000)
 4. Size and height group of the article, combining the size designation referenced in the English and French contract documents. (Ex. L/R - G/R)
 5. Date of manufacture, in numeric format year/month (Ex. 2001/11)
 6. Your manufacturer identification (Company name or number).
 7. Print information as shown below.

1		
2		
3		
4		
5		
6		
7	Wash separately	Laver séparément
	Machine wash - warm (40°C)	Laver à la machine – à l’eau tiède (40°C)
	Do Not use fabric softener or chlorine bleach	Ne pas utiliser d’agent assouplissant ni d’agent de blanchiment
	Tumble dry- low (Do Not use dryer sheets)	Sécher par culbutage - à basse température (Ne pas utiliser d’assouplissant en feuilles)
	Steam iron - low	Repasser à la vapeur - à basse température
	Further care instructions: See separate care instruction sheet	Instructions d’entretien supplémentaires : voir fiche d’instructions d’entretien séparée

5. **Quality Assurance Provisions**

5.1 **Responsibility for Inspection** – Unless otherwise stipulated in the contract, it is the prime contractor's responsibility to satisfy the RCMP, Uniform and Equipment Program that the material and services being supplied conform to this specification. This may be accomplished by performing the tests specified in this specification or by demonstrating to the satisfaction of the RCMP, Uniform and Equipment Program that conformity to this specification of manufacturing processes is assured. The contractor shall use any independent, North American, ISO 9001 certified and ISO 17025 “Textile” certified testing facilities. Note: CTT Group Inc., Quebec, is known to meet this requirement.

5.2 The RCMP, Uniform and Equipment Program reserves the right to perform any inspection considered necessary to ensure the material and services conform to the specified requirements. For the purpose of inspection, a portion of each delivery not exceeding two percent or two out of any number delivered under 100 may be put to tests that could destroy the articles. If found to be inferior or not in accordance with this specification, all articles so destroyed shall be replaced by others of proper quality and pattern at the expense of the contractor. The entire delivery may also be rejected if it is found that articles previously rejected due to non-repairable defects are redelivered for inspection.

5.3 The contractor will be promptly notified when any articles are not accepted and such articles will be returned at the contractor's risk and expense.

6. **Scale of Measurement Definitions and Location References**

(Refer to the Scale of Measurements and drawing #1)

- 6.1 **Chest Circumference (total circumference)** – When placed flat, the chest shall be the distance across the buttoned shirt, measured at the lowest point of the armholes. The result shall be doubled to measure total circumference. (A)
- 6.2 **Hem Circumference (total circumference)** - When placed flat, the hem shall be the distance across the buttoned shirt, measured in a straight line at the lowest point on the side seam. The result shall be doubled to measure total circumference. (B)
- 6.3 **Back Length** - The length shall be the distance measured from the base of the collar at center back of the neck to the bottom of the shirt. (C)
- 6.4 **Back Width** - The back width shall be the distance across the back of the shirt measured at the bottom of the yoke. (D)
- 6.5 **Side Length** - The distance measured from the lowest point of the armhole to the bottom edge of the hem. (E)
- 6.6 **Neck Circumference** - The neckline circumference shall be the distance measured along the neck line from collar end to end. (F)
- 6.7 **Sleeve Overarm** - The overarm sleeve length shall be the distance from the armhole at the shoulder to the top of the cuff. (G)
- 6.8 **Sleeve Underarm** - The underarm sleeve length shall be the distance along the sleeve seam from the armhole to the top of the cuff. (H)
- 6.9 **Sleeve Length (Centre Back Neckline to cuff edge)** - The distance measured from the mid-point of the neckline at the center back to the bottom edge of the cuff. (J)
- 6.10 **Cuff Length** - The cuff length shall be the total distance from the outer edge to the opposite outer edge of the cuff. (K)
- 6.11 **Shoulder Strap** - The shoulder strap shall be the distance measured from the tip of the shoulder strap to the shoulder seam. (L)
- 6.12 **Depth of Yoke** - The yoke depth shall be the distance measured from the collar seam at the center back to the bottom of the yoke. (M)

Scale of Measurements – Shirt, Blue, FR, Special Duty														
Size Designation		Body Measurements	Garment Measurements											
Height Group	Size	Chest (Inches)	Chest Circ.	Hem Circ.	Back Length	Back Width	Side Length	Neckline Circ.	Sleeve Length			Cuff Length	Shoulder Straps	Depth of Yoke
									Sleeve Overarm	Sleeve Underarm	Centre Back Neck to cuff edge			
Short	XXS	31" - 33"	98	92.5	68	41	36	41.25	55	44.75	82	29.75	14	7.25
	XS	34" - 36"	105.5	100	70	43.5	37	42	55.5	44.75	83.75	30	14.75	8.25
	S	37" - 39"	113	107.5	72	46	38	43.25	56.25	45	85.75	30.5	15.5	9.25
	M	40" - 42"	120.5	115	74	48.5	39	44.25	56.75	45	87.5	30.75	16.25	10.25
	L	43" - 45"	128	122.5	76	51	40	45.5	57.25	45.25	89.5	31	17	11.25
	XL	46" - 48"	135.5	130	78	53.5	41	46.5	57.75	45.5	91.25	31.25	17.75	12.25
	2XL	49" - 51"	143	137.5	80	56	42	47.5	58.25	45.5	93.25	31.5	18.5	13.25
	3XL	52" - 54"	150.5	145	82	58.5	43	48.75	59	45.75	95.25	32	19.25	14.25
	4XL	55" - 57"	158	152.5	84	61	44	50	59.5	46	97	32.25	20	15.25
5XL	58" - 60"	165.5	160	86	63.5	45	51.25	60	46.25	99	32.5	20.75	16.25	
Regular	XXS	31" - 33"	98	92.5	73	41	41	41.25	59	48.75	86	29.75	14	7.25
	XS	34" - 36"	105.5	100	75	43.5	42	42.25	59.5	49	87.75	30	14.75	8.25
	S	37" - 39"	113	107.5	77	46	43	43.25	60.25	49	89.75	30.5	15.5	9.25
	M	40" - 42"	120.5	115	79	48.5	44	44.25	60.75	49.25	91.5	30.75	16.25	10.25
	L	43" - 45"	128	122.5	81	51	45	45.5	61.25	49.25	93.5	31	17	11.25
	XL	46" - 48"	135.5	130	83	53.5	46	46.5	61.75	49.5	95.5	31.25	17.75	12.25
	2XL	49" - 51"	143	137.5	85	56	47	47.75	62.25	49.75	97.25	31.5	18.5	13.25
	3XL	52" - 54"	150.5	145	87	58.5	48	49	63	49.75	99.25	32	19.25	14.25
	4XL	55" - 57"	158	152.5	89	61	49	50.25	63.5	50	101	32.25	20	15.25
5XL	58" - 60"	165.5	160	91	63.5	50	51.5	64	50.25	103	32.5	20.75	16.25	
Tolerance ±			4 cm	4 cm	1.5 cm	1.5 cm	1 cm	1 cm	1.5 cm	1.5 cm	1.5 cm	1 cm	0.5 cm	1 cm
Measurement Location			A	B	C	D	E	F	G	H	J	K	L	M

NOTE: All measurements are in centimetres unless otherwise indicated.

Scale of Measurements – Shirt, Blue, FR, Special Duty														
Size Designation		Body Measurements	Garment Measurements											
Height Group	Size	Chest (Inches)	Chest Circ.	Hem Circ.	Back Length	Back Width	Side Length	Neckline Circ.	Sleeve Length			Cuff Length	Shoulder Straps	Depth of Yoke
									Sleeve Overarm	Sleeve Underarm	Centre Back Neck to cuff edge			
Tall	XXS	31" - 33"	98	92.5	78	41	46	41.5	63	52.75	90	29.75	14	7.25
	XS	34" - 36"	105.5	100	80	43.5	47	42.5	63.5	53	91.75	30	14.75	8.25
	S	37" - 39"	113	107.5	82	46	48	43.5	64.25	53	93.75	30.5	15.5	9.25
	M	40" - 42"	120.5	115	84	48.5	49	44.5	64.75	53.25	95.5	30.75	16.25	10.25
	L	43" - 45"	128	122.5	86	51	50	45.5	65.25	53.25	97.5	31	17	11.25
	XL	46" - 48"	135.5	130	88	53.5	51	46.75	65.75	53.5	99.5	31.25	17.75	12.25
	2XL	49" - 51"	143	137.5	90	56	52	48	66.25	53.75	101.25	31.5	18.5	13.25
	3XL	52" - 54"	150.5	145	92	58.5	53	49.25	67	53.75	103.25	32	19.25	14.25
	4XL	55" - 57"	158	152.5	94	61	54	50.5	67.5	54	105	32.25	20	15.25
5XL	58" - 60"	165.5	160	96	63.5	55	51.5	68	54.25	107	32.5	20.75	16.25	
Tolerance ±			4 cm	4 cm	1.5 cm	1.5 cm	1 cm	1 cm	1.5 cm	1.5cm	1.5 cm	1 cm	0.5 cm	1 cm
Measurement Location			A	B	C	D	E	F	G	H	J	K	L	M

NOTE: All measurements are in centimetres unless otherwise indicated.

APPENDIX A

Sealed Pattern Identifier

Pattern #: G.S. 1045-305
 Title: Shirt, Blue, FR, Special Duty

Paper Patterns - Paper patterns are available from the RCMP, Uniform and Equipment Program, Ottawa Ontario, under Pattern # G.S. 1045-305. Firms requested to produce Pre-contract Award Samples will be provided with the base pattern only. The full set of patterns either in individual sizes or as a graded nest will be provided to the successful bidder after the contract is awarded.

The paper patterns include seam allowances, drill holes and/or placement templates. Drill holes mark the edge of the placement. Contractors may make changes required to suit their production process, however, the design and grade shall not be affected or changed.

All patterns are the property of the RCMP and must be returned upon completion of the contract.

Pattern Pieces - This design has 17 pattern components.

<u>Legend:</u>	
Cut 1 Single	= Cut 1
Cut 1 Paired	= Cut 2
Cut 2 Paired	= Cut 4

Pattern Components	Nomenclature	Quantity to be cut	Material
# 1 of 17	Back	1 Single	Shell Material
# 2 of 17	Front - Right	1 Single	Shell Material (RSU)
# 3 of 17	Front - Left	1 Single	Shell Material (RSU)
# 4A of 17	Buttonhole Flap - Left Front	1 Single	Shell Material (RSU)
# 4B of 17	Buttonhole Flap - Left Front	1 Single	Shell Material (RSU)
# 4C of 17	Buttonhole Flap - Left Front	1 Single	Shell Material (RSU)
# 5 of 17	Yoke	1 Paired	Shell Material
# 6 of 17	Sleeve	1 Paired	Shell Material
# 7 of 17	Cuff	2 Paired	Shell Material

# 8 of 17	Sleeve Strap	1 Paired	Shell Material
# 9 of 17	Placket	1 Paired	Shell Material
# 10 of 17	Collar	1 Paired	Shell Material
# 11 of 17	Elbow Patch	1 Paired	Shell Material
# 12 of 17	Pocket	1 Paired	Shell Material
# 13 of 17	Pocket Flap A	1 Paired	Shell Material
# 14 of 17	Pocket Flap B	1 Paired	Shell Material
# 15 of 17	Shoulder Strap	2 Paired	Shell Material
# 16 of 17	Pen Pocket	1 Paired	Shell Material
# 17 of 17	Buttonhole Flap	1 Paired	Shell Material

APPENDIX B

CARE INSTRUCTIONS

Applicable To:

Shirt, Blue, F.R. Special Duty
Trousers, Combat F.R. Blue

This garment is designed to be fire-resistant. The best way to maintain its performance is to **keep it clean by washing it regularly**. Garments made of fire-resistant material can be washed and dried by any conventional home method, followed by hand ironing if necessary. Conventional home laundering may not remove the last traces of very heavy, widespread or ground-in soils which may be flammable and could adversely affect the thermal protective performance of fire-resistant garments. If home laundering does not remove contaminants or contaminants build up, garments can be periodically dry cleaned or commercially laundered. If garments are contaminated by hazardous materials, only commercial or on-site laundering or dry cleaning should be used with appropriate wastewater treatment techniques.

DO NOT USE FABRIC SOFTENER OR DRYER SHEETS
DO NOT USE BLEACH
DO NOT USE FATTY BASED SOAPS

Machine Wash:

Close all buttons, zippers, fasteners and Velcro before washing. Wash fire-resistant garments separately from other garments to prevent contamination with lint of flammable fibres. Wash in warm water **separately, with heavy-duty liquid** detergent. **DO NOT OVERLOAD MACHINE.**

If heavily soiled, pretreat heavily soiled areas by rubbing full strength heavy duty liquid laundry detergent, or any off the shelf laundry pretreatment product

At the end of the final rinse cycle, readjust the garment in the washer, and put it through an additional rinse cycle. This will assure complete rinsing of detergent that may have been trapped during washing.

Drying:

Close all buttons, zippers, fasteners and Velcro before drying. Tumble dry separately on a warm setting. **DO NOT OVERLOAD MACHINE.** Remove promptly. If necessary, touch up with steam iron at low temperature.

Dry Cleaning:

If dry-cleaned, request appropriate wastewater treatment techniques.

INSTRUCTIONS D'ENTRETIEN

Applicable à :

Chemise de fonction spéciale bleue ignifuge
Pantalon de combat bleu ignifuge

Ce vêtement est conçu pour être ignifuge. La meilleure façon d'en préserver les propriétés est de le **garder propre en le lavant régulièrement**. Les vêtements ignifuges peuvent être lavés et séchés dans des appareils domestiques classiques, puis repassés, au besoin. Il se peut qu'un blanchissage domestique ne permette pas d'enlever la grosse saleté ou la saleté étendue ou incrustée, et les résidus pourraient être inflammables et nuire à la capacité de protection thermique des vêtements ignifuges. Si le blanchissage domestique ne permet pas d'éliminer tous les contaminants, les vêtements peuvent être périodiquement nettoyés à sec ou blanchis dans une blanchisserie commerciale. Les vêtements contaminés par des matières dangereuses doivent uniquement être blanchis ou nettoyés à sec sur place ou dans une installation commerciale en utilisant des techniques appropriées de traitement des eaux usées.

NE PAS UTILISER D'AGENT ADOUCISSANT OU D'ASSOUPLEISSANT EN FEUILLES
NE PAS UTILISER D'AGENT DE BLANCHIMENT
NE PAS UTILISER DE SAVONS À BASE DE GRAS

Lavage à la machine :

Fermer tous les boutons et toutes les fermetures à glissière, les attaches et les attaches à ruban autoagrippant avant le lavage. Laver les vêtements ignifuges séparément afin d'éviter toute contamination par de la charpie ou des fibres inflammables. Laver à l'eau tiède **séparément**, avec un détergent **liquide industriel**. **NE PAS SURCHARGER LA MACHINE.**

Si le vêtement est très sale, frotter les taches à l'aide d'un détergent liquide industriel ou d'un détachant pour lessive commercial.

À la fin du dernier cycle de rinçage, replacer le vêtement dans la machine et entreprendre un autre cycle de rinçage, afin d'éliminer complètement le détergent.

Séchage :

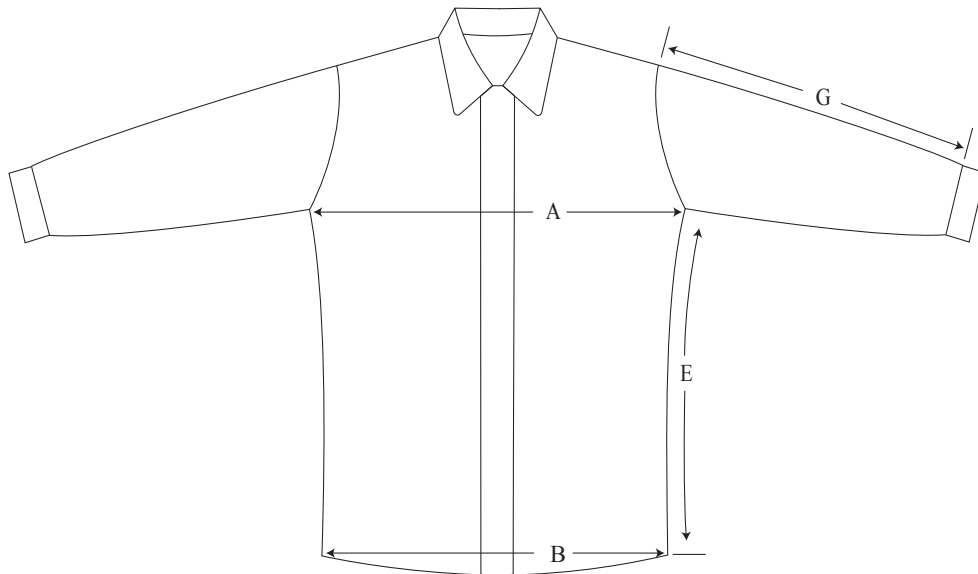
Fermer tous les boutons et toutes les fermetures à glissière, les attaches et les attaches à ruban autoagrippant avant le séchage. Sécher par culbutage séparément à température moyenne. **NE PAS SURCHARGER LA MACHINE.** Retirer rapidement après le séchage. Au besoin, repasser légèrement à basse température avec un fer à vapeur.

Nettoyage à sec :

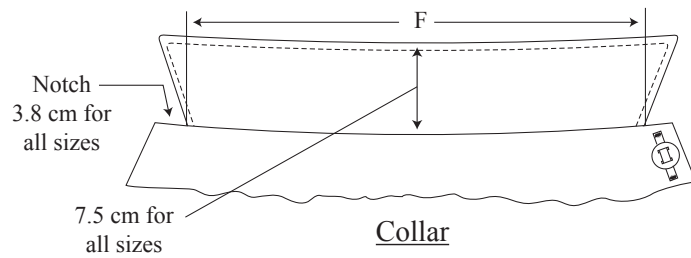
Si le vêtement est nettoyé à sec, exiger que des techniques appropriées de traitement des eaux usées soient utilisées.

Drawing 1

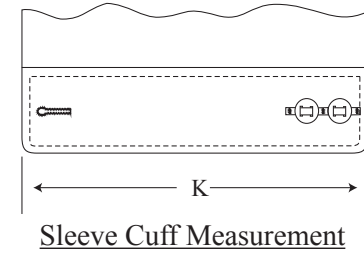
Shirt, Blue, FR, Special Duty
#6055
Measurement Location Chart



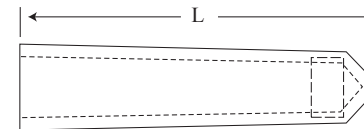
Front View



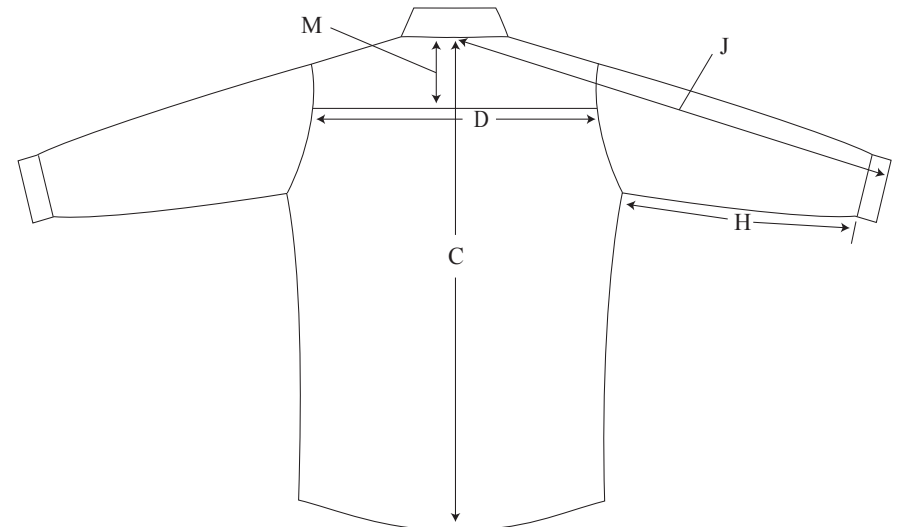
Collar



Sleeve Cuff Measurement



Shoulder Strap



Back View

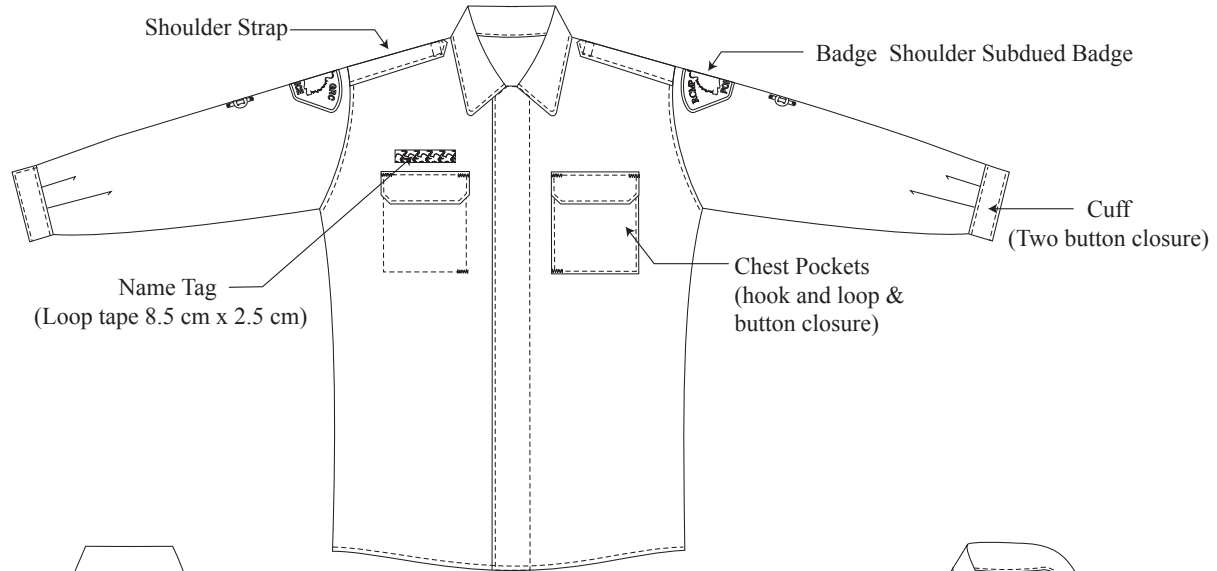
NOT TO SCALE

All measurements are shown in centimeters.

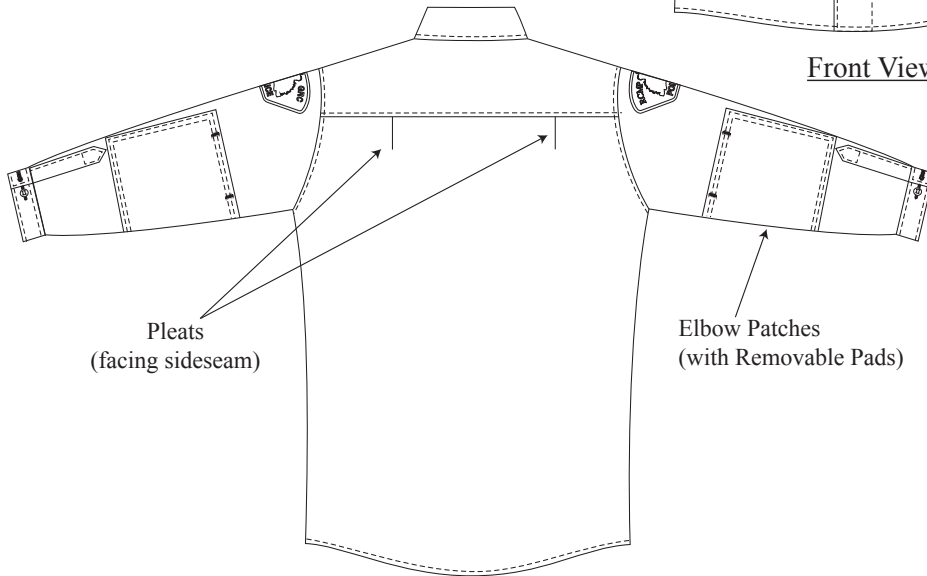
± 0.5 cm tolerance acceptable unless otherwise indicated.

Drawing 2

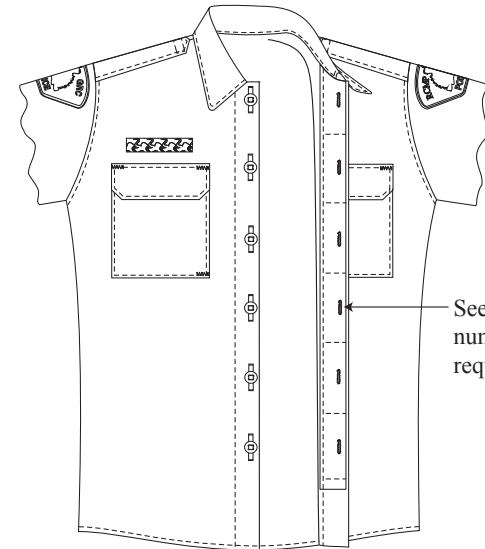
Shirt, Blue, FR, Special Duty
#6055



Front View



Back View



Front Placket Detail

NOT TO SCALE

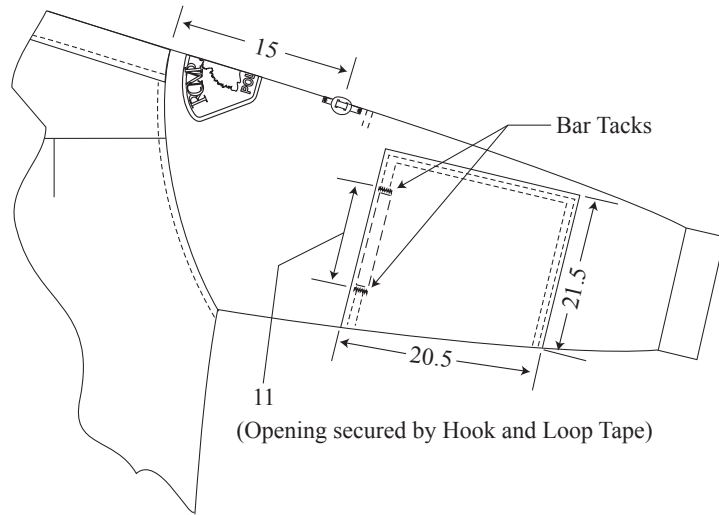
All measurements are shown in centimeters.

± 0.5 cm tolerance acceptable unless otherwise indicated.

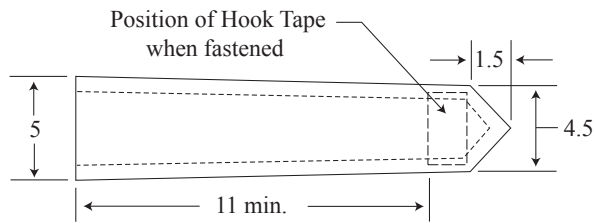
Drawing 3

G.S.1045-305

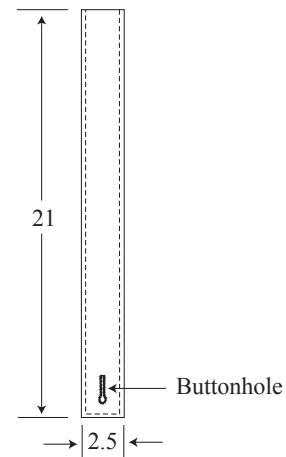
Shirt, Blue, FR, Special Duty
#6055



Elbow Patch Detail

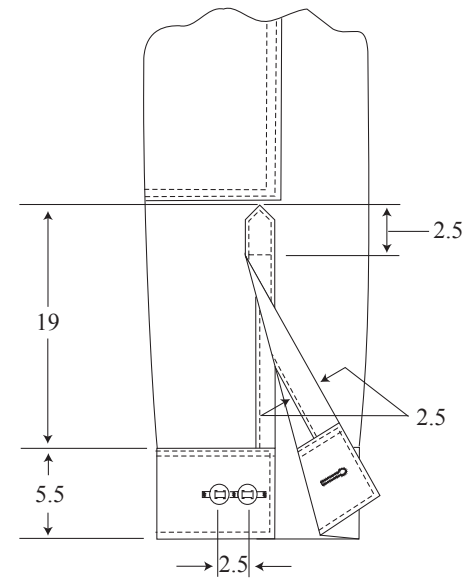


Shoulder Strap

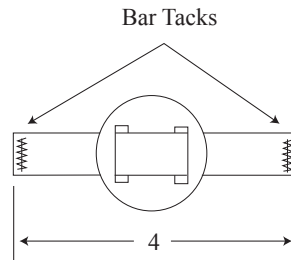


Sleeve Strap

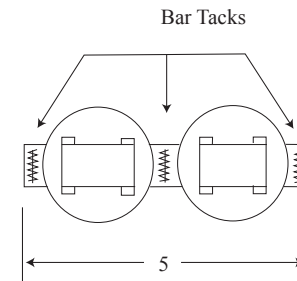
(Allows sleeve to be rolled up and secured)



Cuff Placket Detail



Military Strap Button with Strap



Military Strap Button with Strap for Cuff

NOT TO SCALE

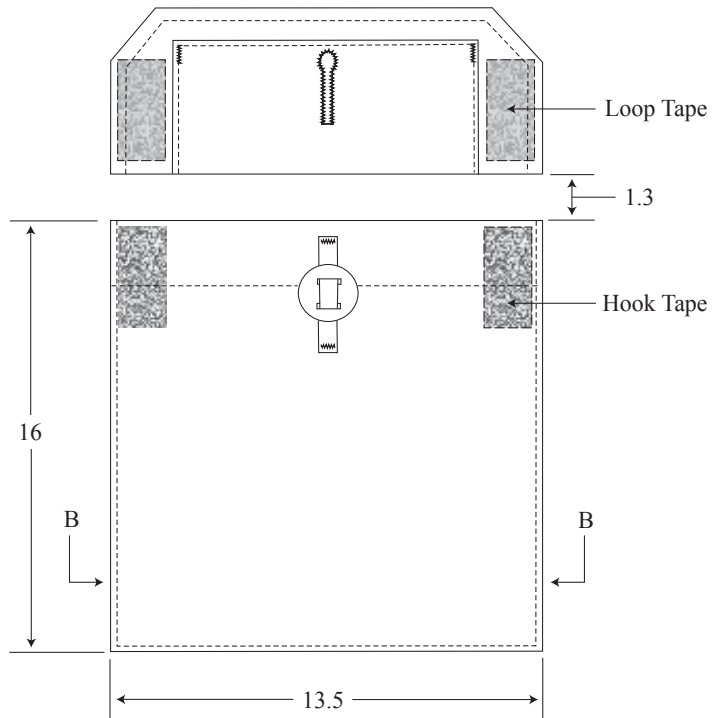
All measurements are shown in centimeters.

± 0.5 cm tolerance acceptable unless otherwise indicated.

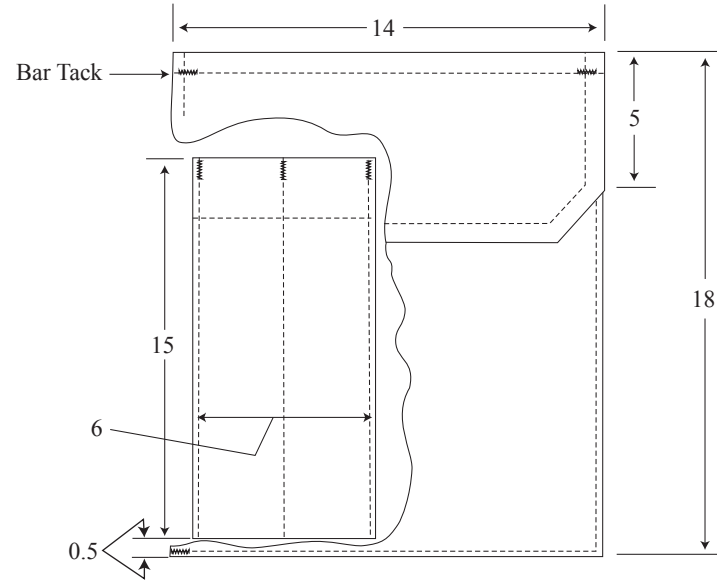
Drawing 4

G.S.1045-305

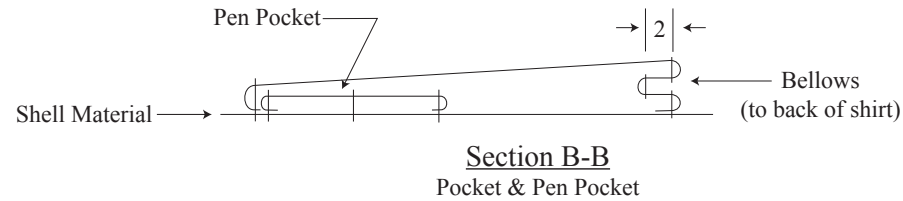
Shirt, Blue, FR, Special Duty
#6055



Pocket Detail



Left Chest Pocket
(showing Pen Pocket)



Section B-B
Pocket & Pen Pocket

NOT TO SCALE

All measurements are shown in centimeters.

± 0.5 cm tolerance acceptable unless otherwise indicated.