



**CANADIAN COAST GUARD  
MARITIME AND CIVIL INFRASTRUCTURE  
Atlantic Region**

**CONSTRUCTION SERVICES**

**Ladder and Platform Refurbishment**

**Straight of Canso Range Towers**





## STATEMENT OF WORK

### “Ladder and Platform Refurbishment - Straight of Canso Range Towers”

**Background Information:** The Ladders on the Straight of Canso Range Towers has been identified as not within current safety regulations and cannot be used safely. Tower access is required for Canadian Coast Guard operations, therefore the ladders must be replaced.

#### Description of Work:

Work for this project consists of; the removal of the current ladder system and replacing it with the new ladder, grating, and support system on the identified ten (10) range towers.

#### 1.0 General

- 1.1 There will be a site visit that potential contractors are encouraged to attend. There will be no extras for failure of the contractor to verify site conditions.
- 1.2 Project to be completed and ready for final inspection by **May 30, 2018**.
- 1.3 Upon award of contract and prior to commencement of work, contractor is to provide the following:
  - 1.3.1. Proof of liability insurance.
  - 1.3.2. Proof of Workers Compensation Board coverage.
- 1.4 Provide a work plan, in writing, indicating;
  - 1.4.1. Name of Contractor.
  - 1.4.2. Project Title.
  - 1.4.3. Date.
  - 1.4.4. Name of Subcontractor(s), if any.
  - 1.4.5. Work methods/procedures to be implemented.
  - 1.4.6. List of Products to be utilized.
  - 1.4.7. Anticipated schedule for the undertaking of all work.
- 1.5 Upon completion of work, Contractor to provide written notification indicating that all work has been completed as per Statement of Work.
- 1.6 See Appendix A for Ladder and Platform Specifications. See Appendix B for Site Locations. See Appendix C for Site Photos.

#### 2.0 Location:

- 2.1 The table below identifies the ten (10) towers included in the Work. Please note the height provided for each tower is measured from foundation to top of light, and is to be used for a reference only.



LLN	Height (ft)	SITE NAME	LATITUDE	LONGITUDE	Approx. Address
LL 689.3	40.4	Eddy Point range front	45°31'12.23"N	61°15'7.43"W	20-72 Sand Point Rd, Mulgrave, NS B0E 2G0
LL 689.4	62.3	Eddy Point range rear	45°31'5.55"N	61°14'53.73"W	
LL 689.7	31.4	Port Malcolm range front	45°34'32.69"N	61°17'16.78"W	2835-2821 Port Malcolm Rd, Port Malcolm, NS B9A 1Z6
LL 689.8	62.7	Port Malcolm range rear	45°34'52.24"N	61°17'40.40"W	
LL 690.3	25.6	Middle Melford range front	45°32'21.73"N	61°18'53.24"W	6861-6773 Marine Dr, Mulgrave, NS B0E 2G0
LL 690.4	45.3	Middle Melford range rear	45°32'21.57"N	61°18'57.59"W	
LL 692	36.3	Park Point range front	45°32'35.75"N	61°19'16.01"W	6861-6773 Marine Dr, Mulgrave, NS B0E 2G0
LL 693	63.3	Park Point range rear	45°32'27.22"N	61°19'7.92"W	
LL 694.4	41.7	Cahil Rock range front	45°34'13.28"N	61°21'17.64"W	7530 NS-344, Mulgrave, NS B0E 2G0
LL 694.5	40.4	Cahil Rock range rear	45°34'16.54"N	61°21'24.34"W	

Table 1: Range Tower Locations

### 3.0 Work Required

The Work to be performed under this scope of work shall include all labour, materials and equipment necessary to complete the following for all ten (10) range towers:

- 3.1 All work and specifications outlined in Appendix A – Ladder and Platform Specifications.
- 3.2 Contractor must confirm all site specific tower measurements and quantities to assure all components fit as intended
  - 3.2.1. I.e. tower height, leg diameter, perimeter channel size, platform layout, etc.
- 3.3 Contractor must supply and install Tylon Cougar Safety Rail as per manufacturer's specifications.
- 3.4 Contractor must install two (2) Protecta Model DB12101639 anchor points as per manufacturer's instructions with stainless steel hardware. One (1) located on the guardrail within arm's reach of the ladder, and one (1) on the guardrail within work area (next to light). Maximum space between anchor points is 2000mm.
- 3.5 All cut members and components must be cleaned of sharp edges and burs.
- 3.6 Contractor must assume there is no power available on site.
- 3.7 Access is the sole responsibility of the contractor.
- 3.8 Any damage to CCG assets, property, or adjoining property caused by the Contractor's Work must be repaired to the satisfaction of the Departmental Representative before Project completion at the expense of the Contractor.

### 4.0 Acceptance Inspection

- 4.1 An acceptance inspection by the Departmental Representative may be carried out at any time during and after the completion of the work by the Contractor.
- 4.2 The Contractor must ensure that a quality control person performs a complete inspection of the Work prior to the crew leaving the site and prior to informing the Departmental Representative that the Work is ready for inspection. The Contractor must have sufficient crew on site during the inspection to correct deficiencies noted by the Departmental Representative.



## 5.0 Safety Requirements

- 5.1 This Section describes specific safety requirements to be observed and enforced during the progress of the Work.
- 5.2 Inclusion of these specific safety requirements shall not constitute a relief of the Contractor's responsibility but is a precaution against oversight or errors.
- 5.3 Contractor must submit a project/site specific Health and Safety Plan for undertaking the work prior to mobilizing for ANY fieldwork. All work to be undertaken in accordance with applicable federal, provincial, and municipal legislation and standards. In the event of conflict between any provisions of above authorities the most stringent provision governs. The Contractor is solely responsible for safety procedures deemed necessary by the Contractor to meet the requirements of this contract.
- 5.4 Contractor must provide all workers, including sub-trades, with adequate and appropriate safety procedures prior to commencement of their duties. Contractor must ensure all workers comply with all safety regulations required by National and Provincial Building Codes, Workers' Compensation Board, Canada Labour Code Part II and any applicable Provincial or Federal acts and municipal statutes and bylaws.
- 5.5 Contractor must take all precautions and must provide all required protection to ensure the safety of the general public and workers in accordance with the current edition of the Occupational Health and Safety Act and Regulations for Construction Projects.
- 5.6 In the event of conflict between any provisions of above authorities the most stringent provision governs.
- 5.7 Contractor must provide health and safety protection as required and must ensure that all work persons are trained in the safe use of health and safety equipment and the handling of materials. Contractor must ensure that at least one person remains on site at all times during the use of materials who is trained in the first aid aspects required to deal with emergency situations that may arise.
- 5.8 Contractor must ensure that all workers have been fully qualified and certified in respect to mandated safety training as required under the applicable health and safety legislation. The Contractor shall, on request of the Departmental Representative, provide documentation to this effect.
- 5.9 Contractor must comply with all health and safety rules, procedures and codes that may be specified by the Departmental Representative and/or contained in the Contract.
- 5.10 Contractor must provide all necessary safety equipment, including personal protective equipment (PPE), as required for safe execution of the Work. All safety equipment must conform to the requirements of the appropriate authority. (i.e. CSA)
- 5.11 Contractor must post "No Smoking" signs when flammable materials are being used. Contractor must not allow use of spark producing equipment during application of flammable materials until vapors have gone after application. Contractor must ensure that at least one person remains on site at all times who is trained to deal with emergency situations that may arise due to outbreak of fire.
- 5.12 Submission of the Safety Plan must not relieve Contractor of any legal obligations for the provision of construction safety as specified by the most stringent Federal/Provincial Safety Acts or Regulations or any other Acts, Regulations, Standards or Codes of Practice.
- 5.13 Contractor must immediately report to the Departmental Representative all incidents and accidents that occur on the Work Site.
- 5.14 Contractor must stop the Work if conditions are such that the Work cannot be performed safely.
- 5.15 Contractor must be responsible for the safety of any Subcontractors involved in the Project. This must include ensuring they have all necessary tools and equipment, including Personal protective equipment, to safely perform the Work.



5.16 Contractor must also, ensure that all subcontractors have been advised of and are in compliance with the overall project Health and Safety Plan.

## **6.0 Environmental Requirements**

- 6.1 Contractor is solely responsible for all environmental protection procedures deemed necessary to comply with all applicable Federal, Provincial and Municipal regulatory requirements.
- 6.2 Contractor is fully responsible for all costs associated with required remediation occurring from Contractors work on site.
- 6.3 Fires and burning of rubbish are not permitted on site.
- 6.4 Contractor must ensure that all equipment is in good repair and no fuels or fluids are leaking from it. Equipment in disrepair is not permitted on site and must be removed. Basic petroleum spill equipment must be on site.
- 6.5 No maintenance beyond that of a required daily routine shall be performed on equipment while on site. No refueling to be completed within 30m of a water body.
- 6.6 Contractor must not pump water suspected of containing suspended materials into waterways, sewers or drainage systems.
- 6.7 Contractor must ensure no sediment is introduced to any waterway as a result of the Work.

## **7.0 Security Requirements**

- 7.1 Contractor to protect public from damage to person and property.
- 7.2 Contractor is responsible for security of contents of site and work for duration of project.



## **APPENDIX “A”**

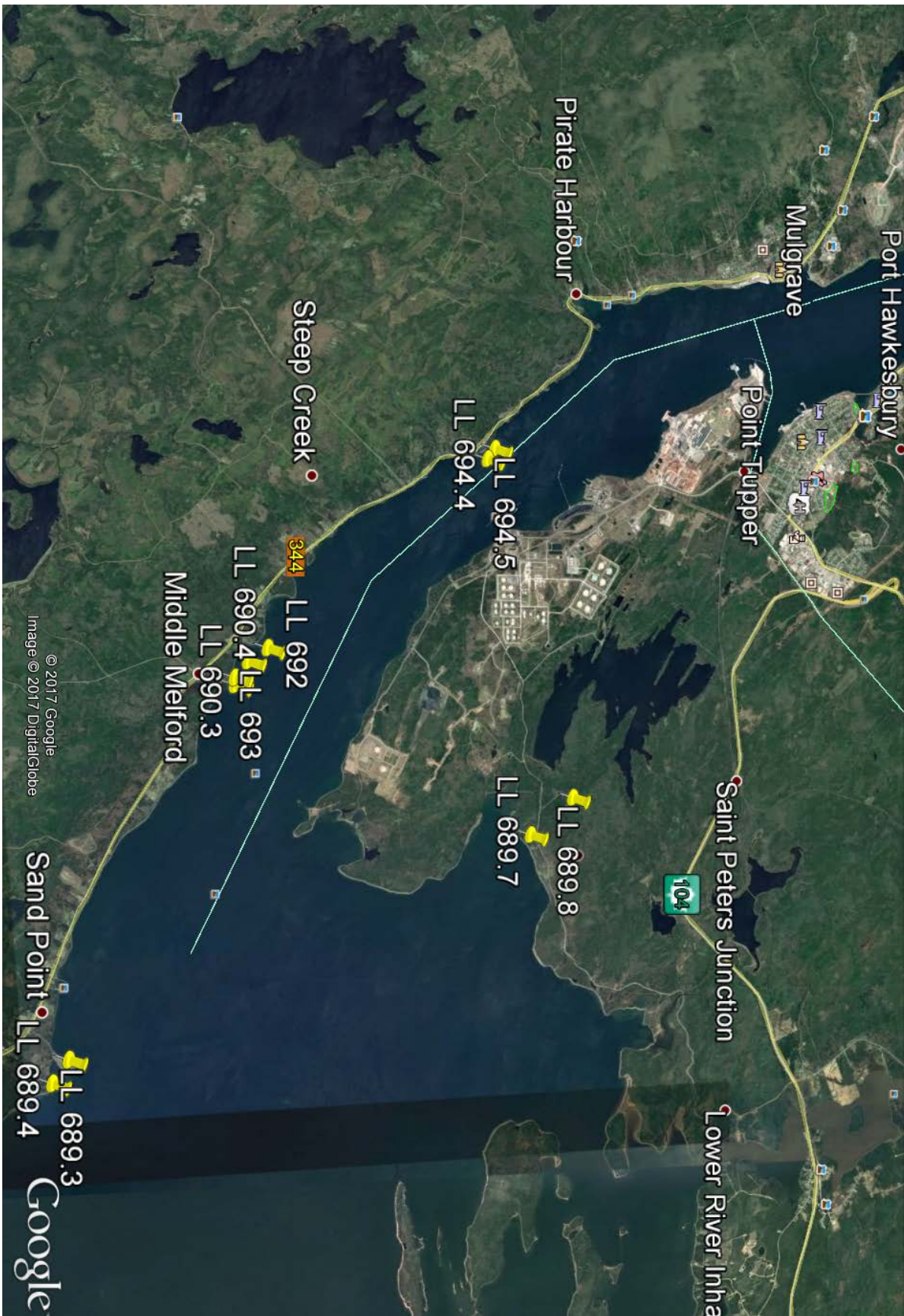
### **Ladder and Platform Specifications**



## **APPENDIX “B”**

### **Site Locations**









## **APPENDIX “C”**

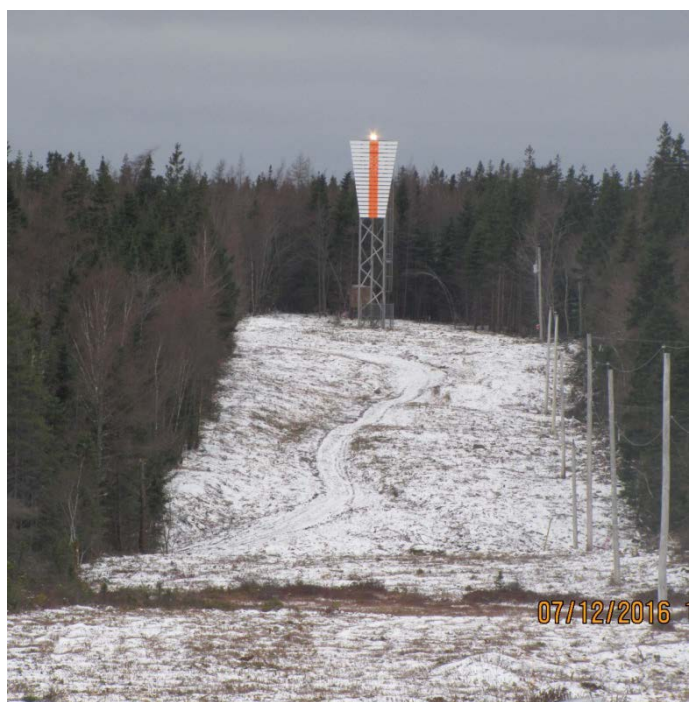
### **Site Photos**



**LL 689.3 & LL 689.4 - Eddy Point Front and Rear Range**



LLN 689.7 Port Malcom Front Range



**LL 689.7 & LL 689.8 - Port Malcolm Front and Rear Range**





**LL 690.3 & LL 690.4 - Middle Melford Front and Rear Range**



**LL 692 & LL 693 – Park Point Front and Rear Range**



**LL 694.4 & LL 694.5 – Cahil Rock Front and Rear Range**