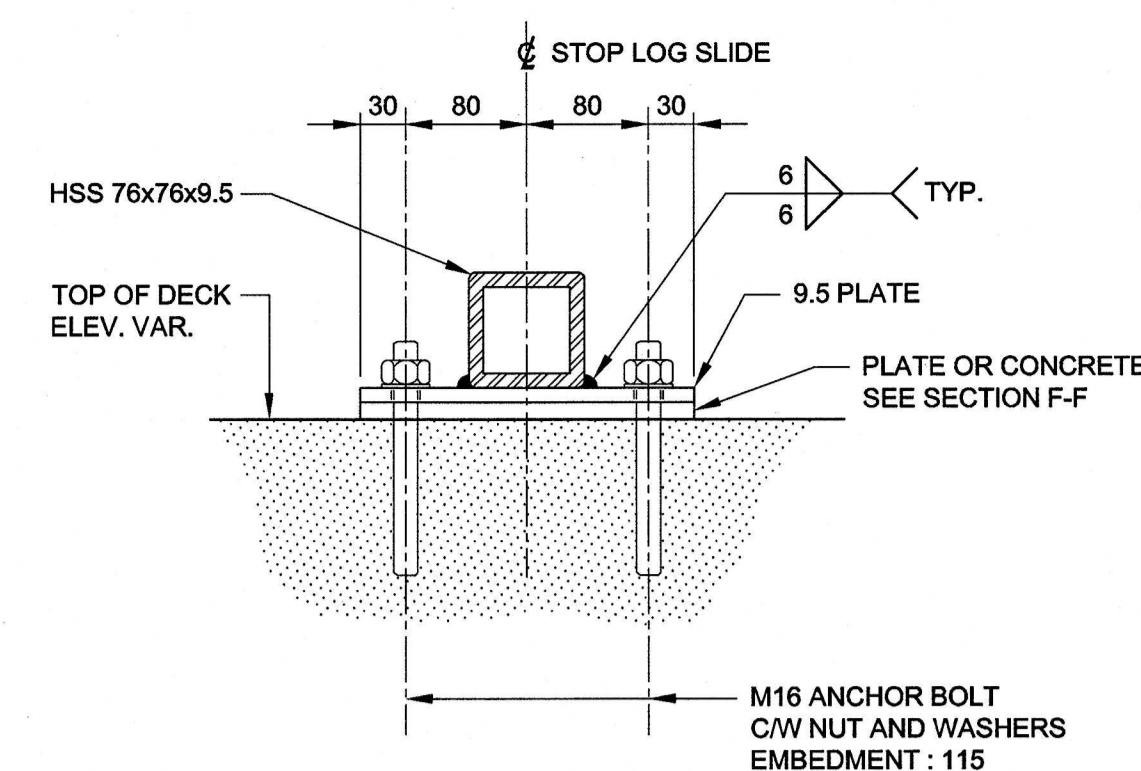
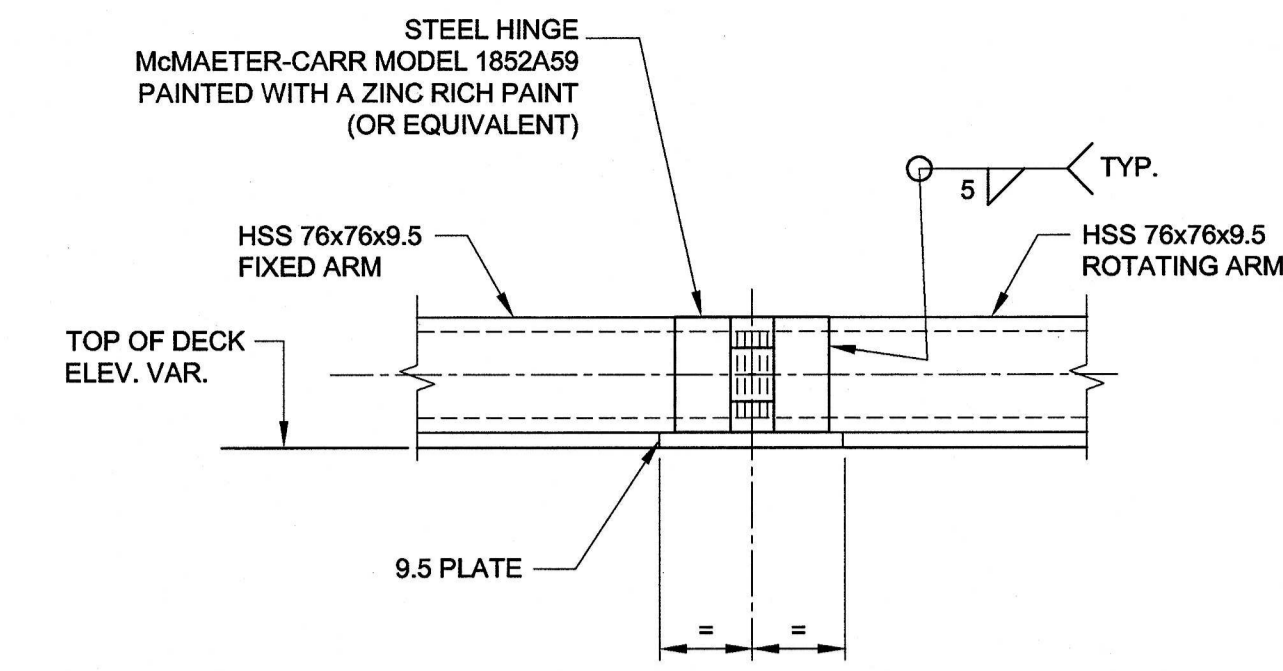


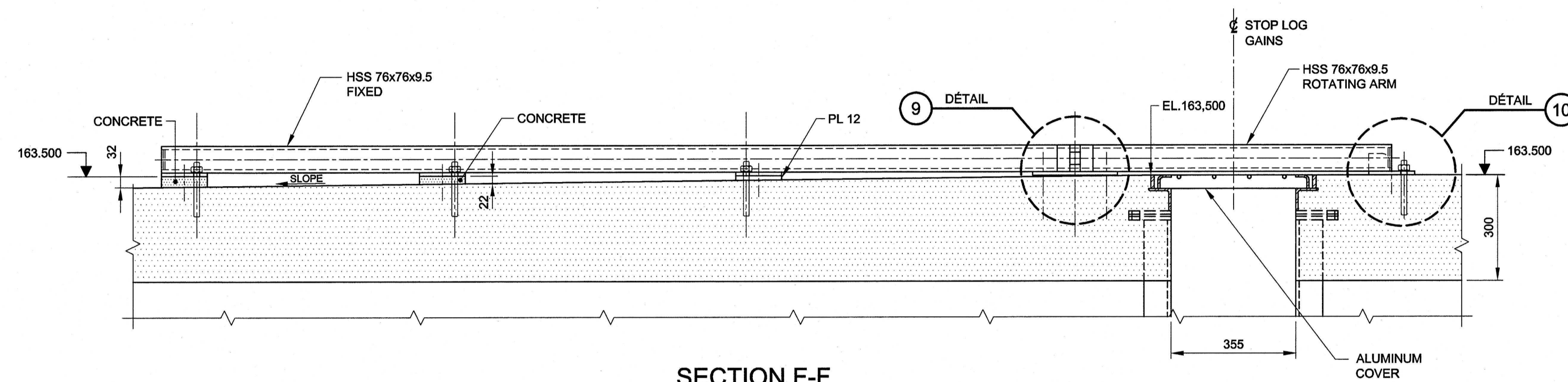
DETAIL 8
STOP LOG RAIL
CV-006-01
1:10



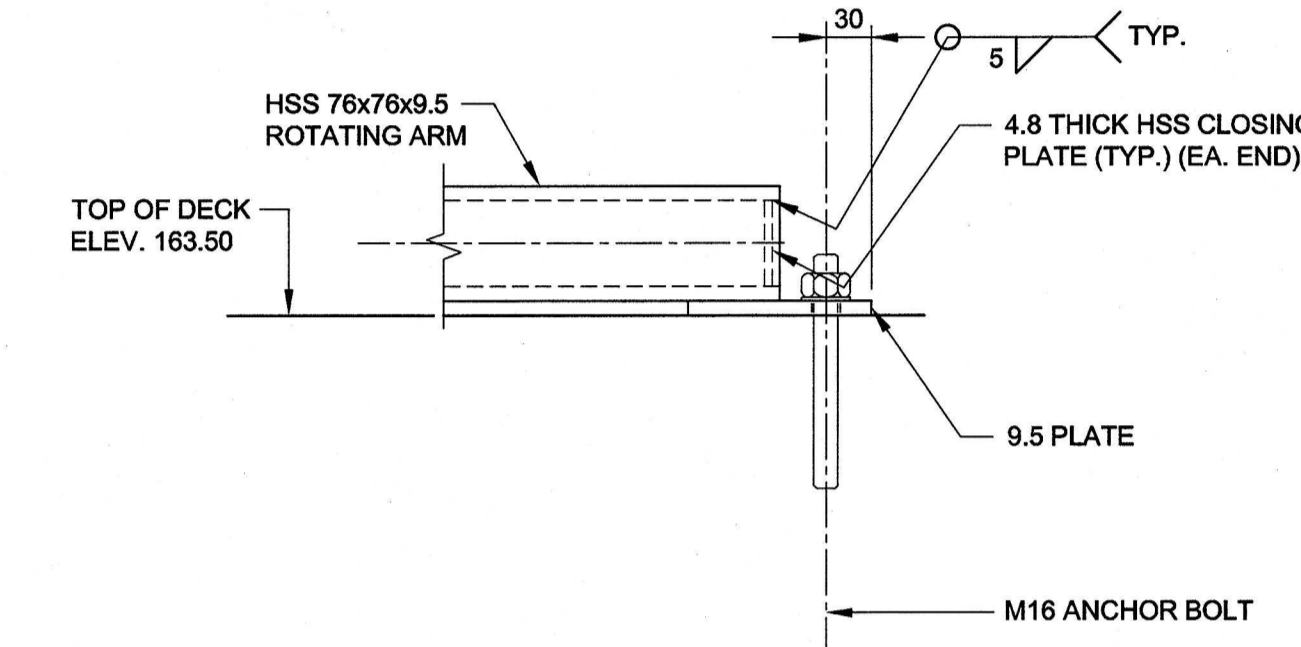
SECTION G-G
1:5



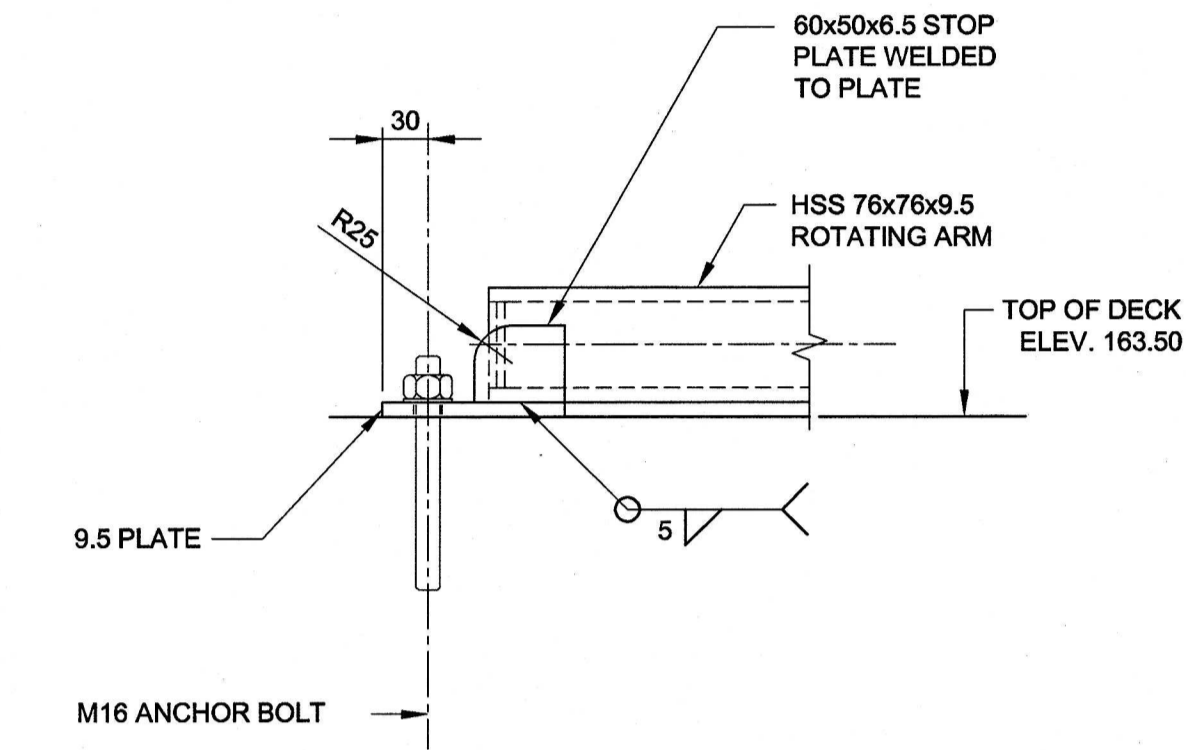
DETAIL 9
1:5



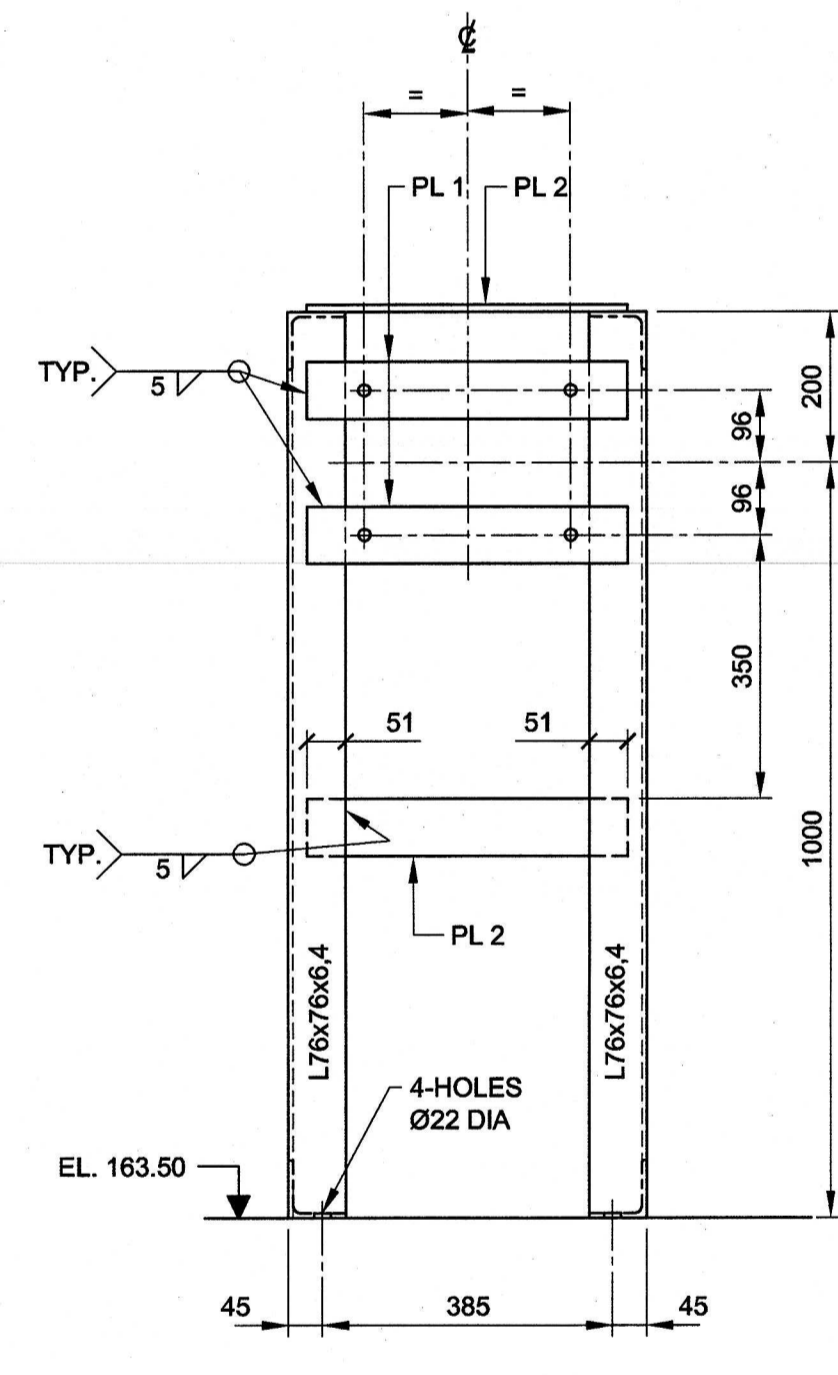
SECTION F-F
1:10



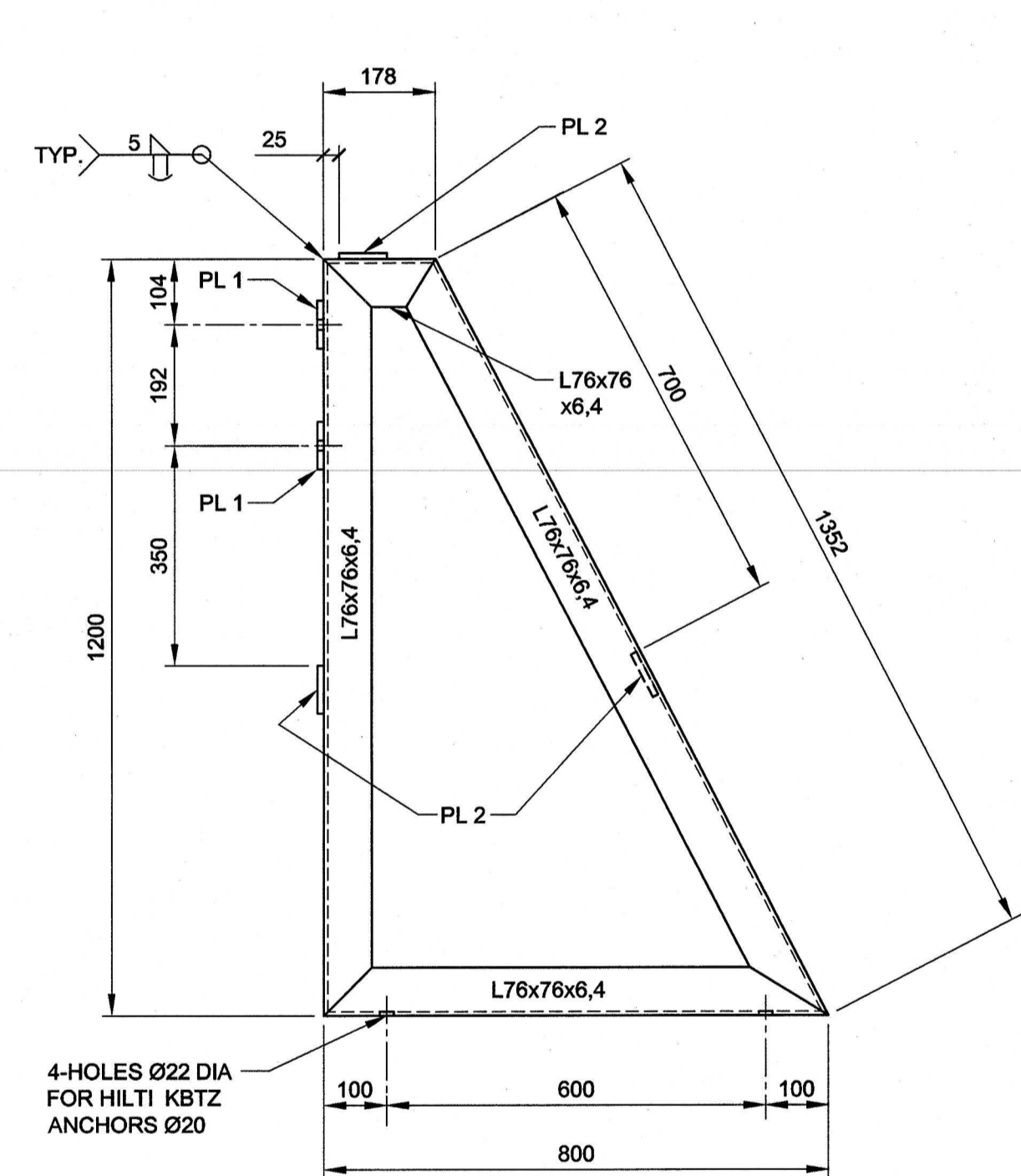
DETAIL 10
1:5



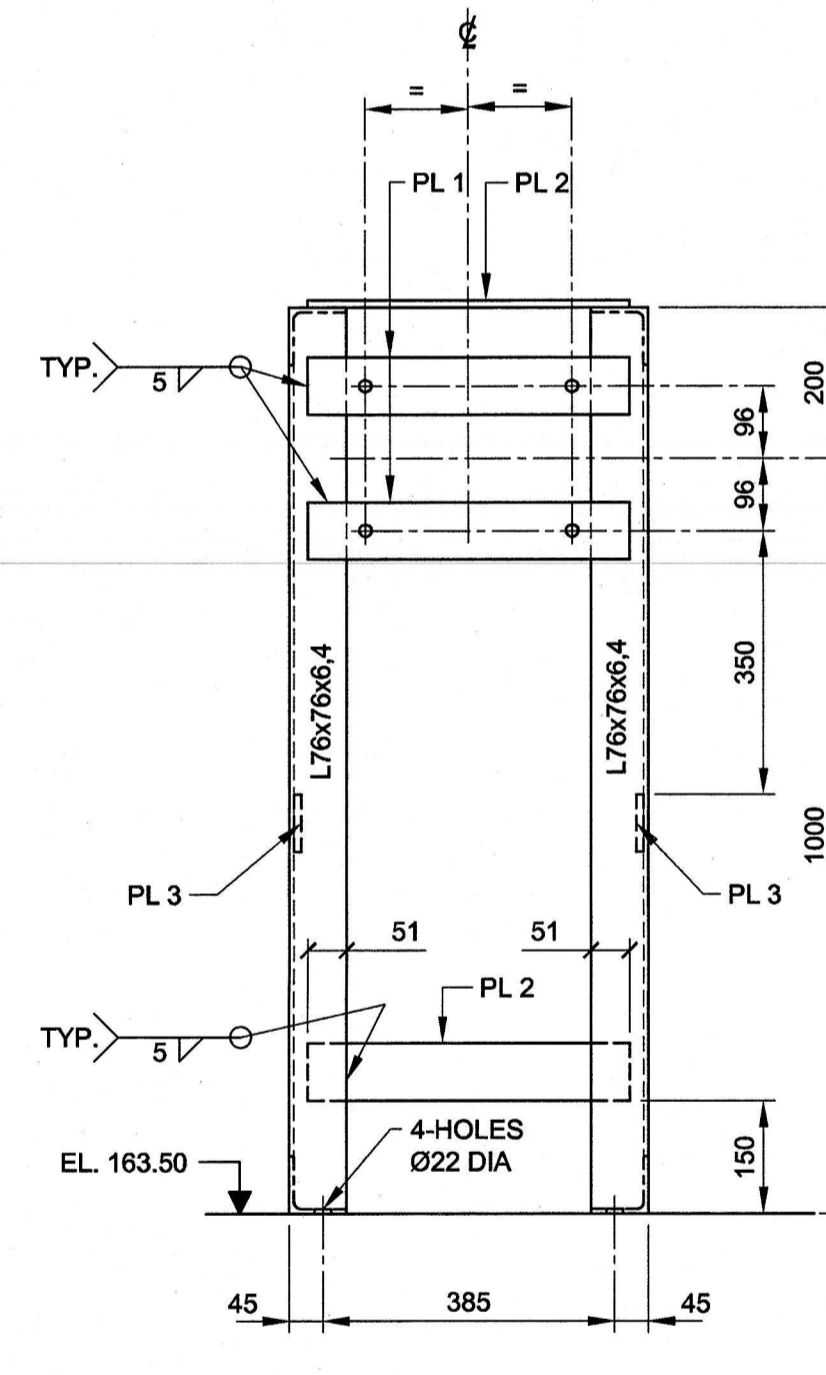
SECTION H-H
1:5



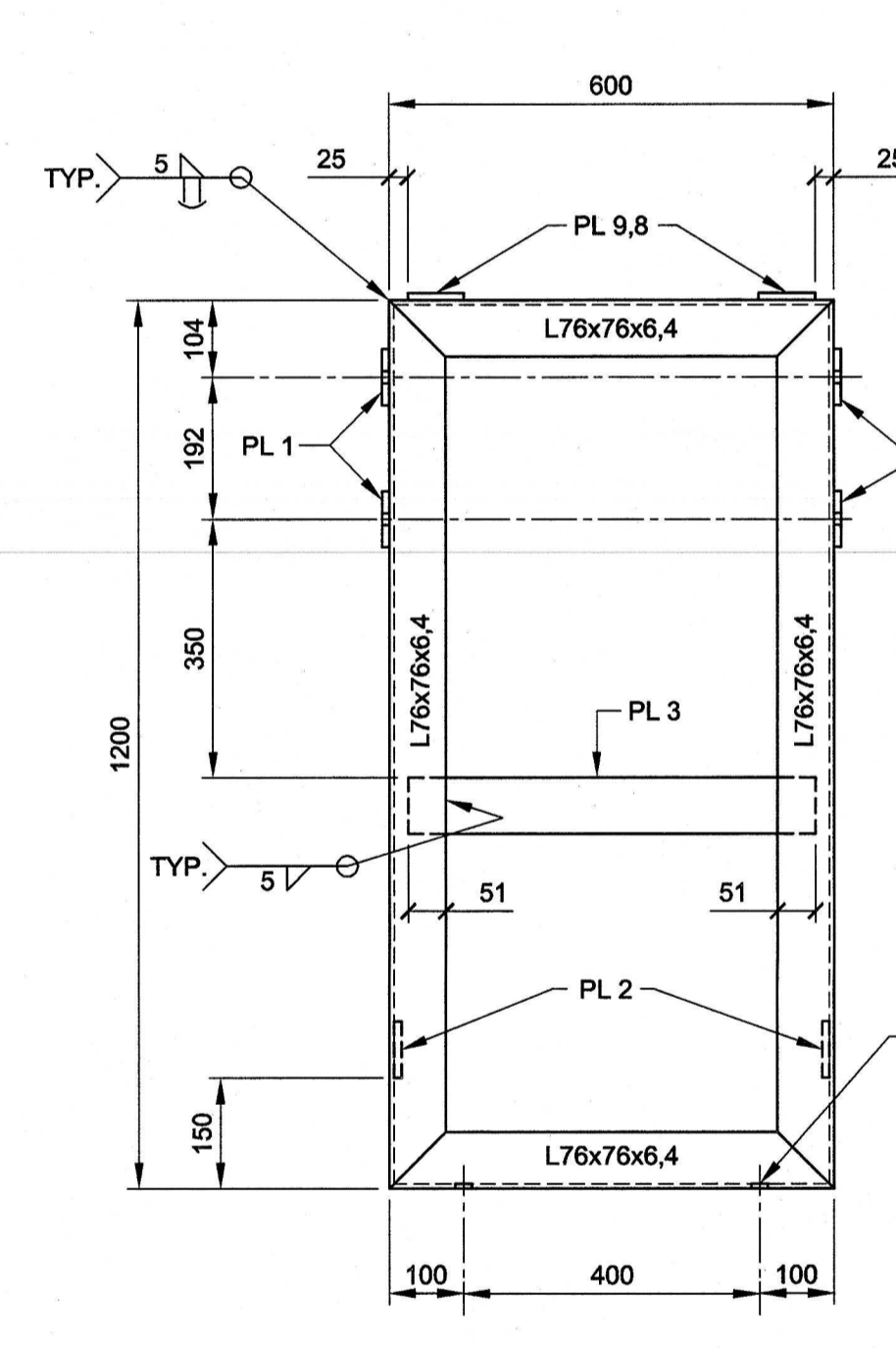
ELEVATION
1:10



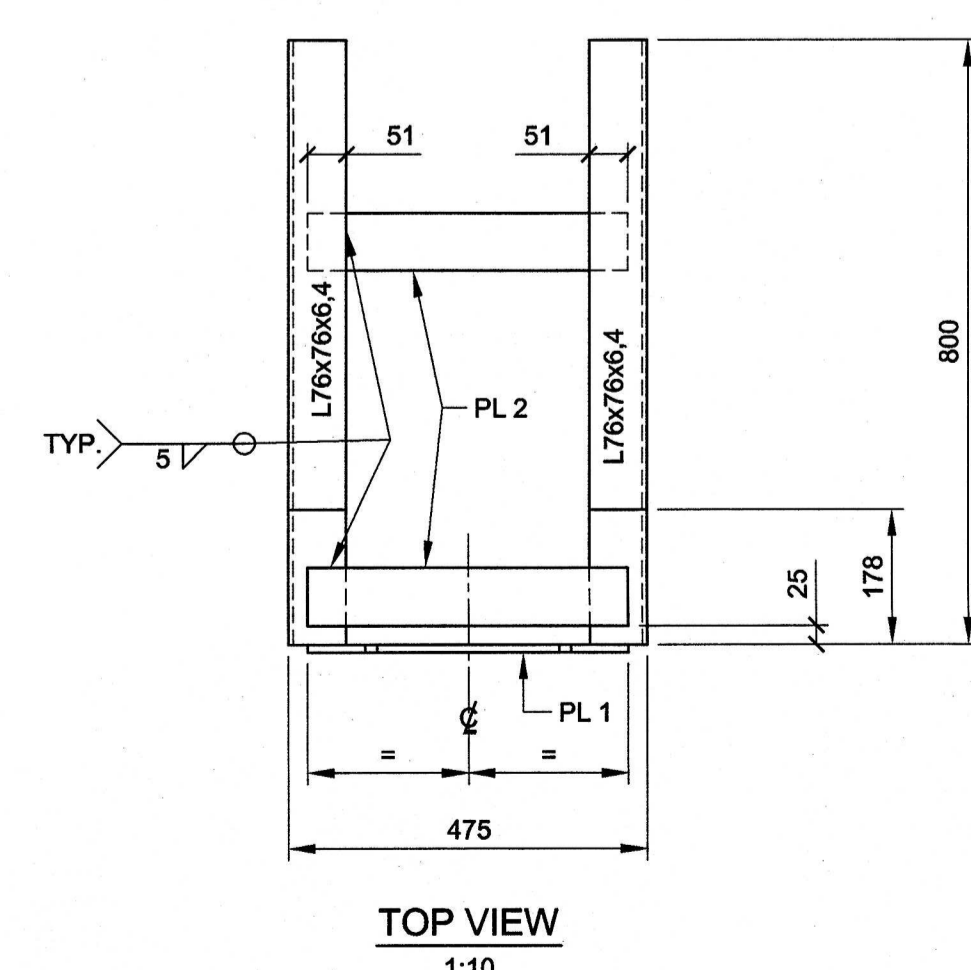
SIDE VIEW
1:10



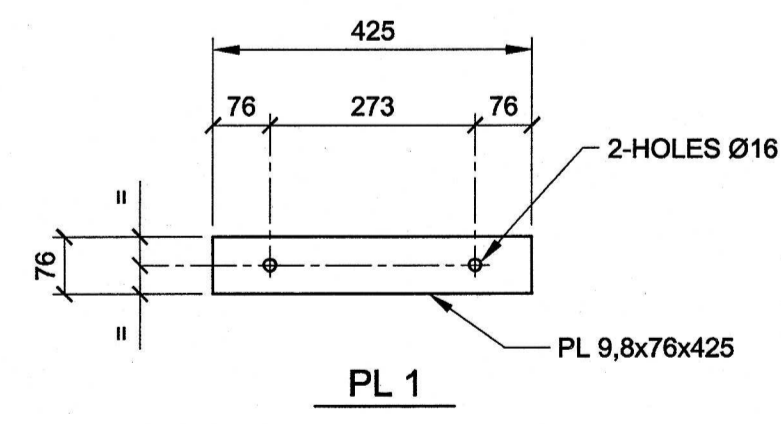
ELEVATION
1:10



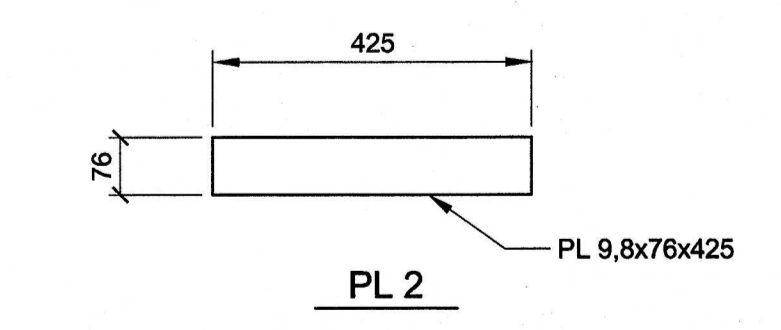
SIDE VIEW
1:10



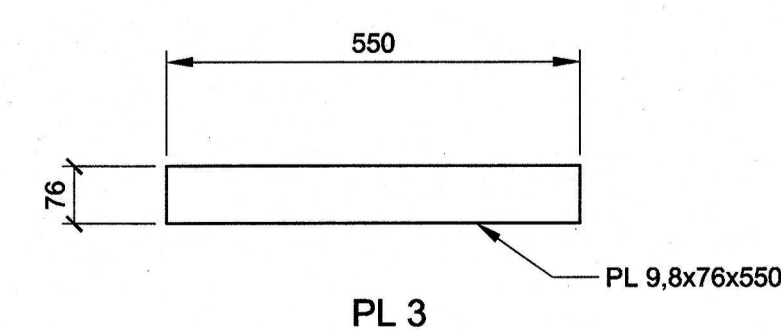
TOP VIEW
1:10



PL 1



PL 2



PL 3

DETAIL 11
FOR HAND WINCH MODEL WINTTECH LMB-GC-SBH
CV-006-01
1:10

DETAIL 12
FOR HAND WINCH MODEL WINTTECH LMB-GC-SBH
CV-006-01
1:10

No	DATE	DESCRIPTION	BY
1	2018-02-22	ISSUED FOR TENDER	J.K.
0	2017-02-23	ISSUED FOR REVIEW	J.K.
no	date	issues and/or modifications	by

No	DATE	DESCRIPTION	BY
1	2018-02-22	ISSUED FOR TENDER	J.K.
0	2017-02-23	ISSUED FOR REVIEW	J.K.
no	date	issues and/or modifications	by

Canada

 600-3400 St. Laurent Blvd
 Level OC H7V 3Z2
 Phone: 514 337-2462
 Fax: 450 682-1013
 www.cima.ca

J. KONCZYNSKI
 100115189
 2018-02-22

project		BOBS LAKE DAM REPLACEMENT BOLINGBROKE - ONTARIO	
title		WINCH FRAME AND STOP LOG RAIL SECTIONS AND DETAILS	
drawn	I. ZIECK	scale	AS SHOWN
checked	J. CARON	date	2015-07-28
designed	M. LAPLANTE	reference	
approved	J. KONCZYNSKI		
A0138	A000492B	CV 006 02 1	

2018-02-22 10:00:00 AM C:\Users\jcaron\OneDrive\Documents\CV-006-01.dwg