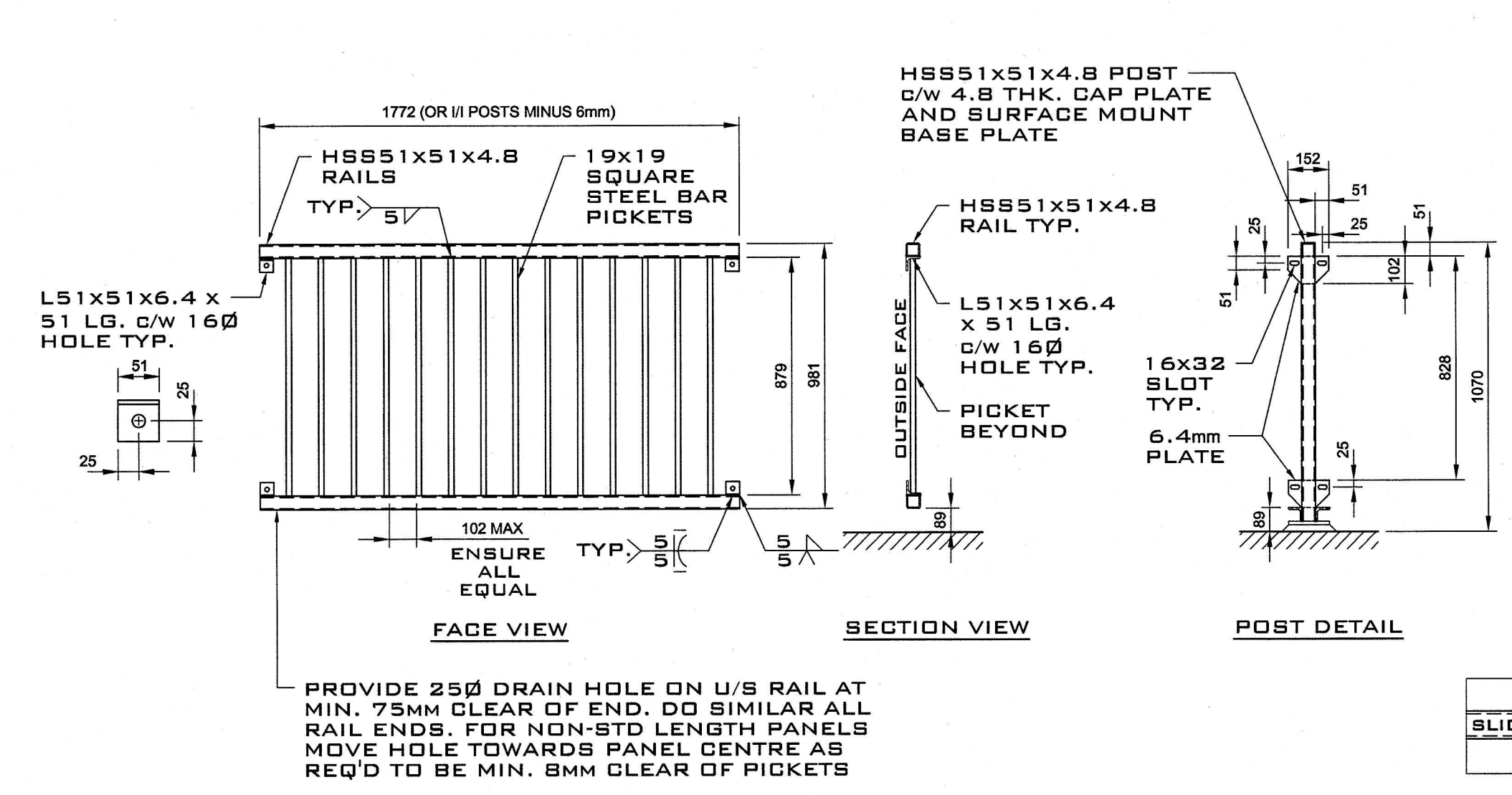
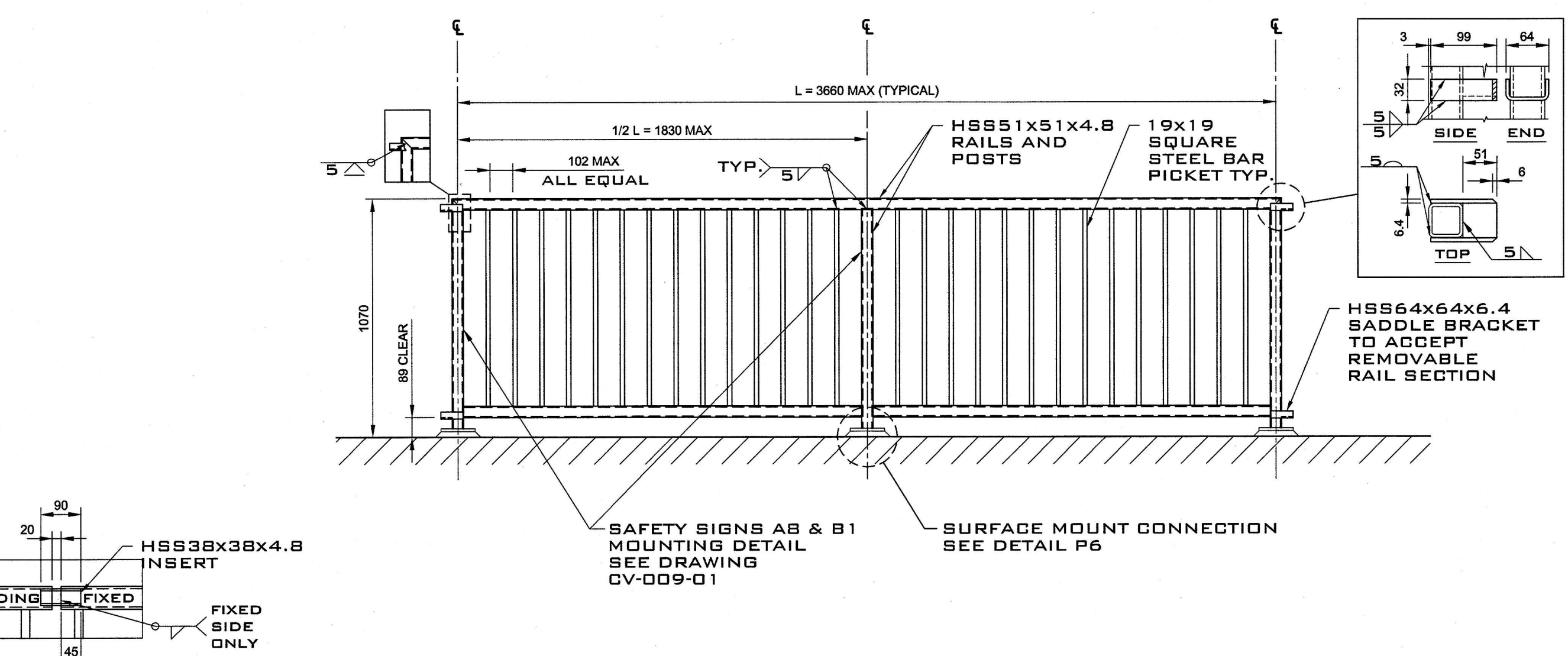


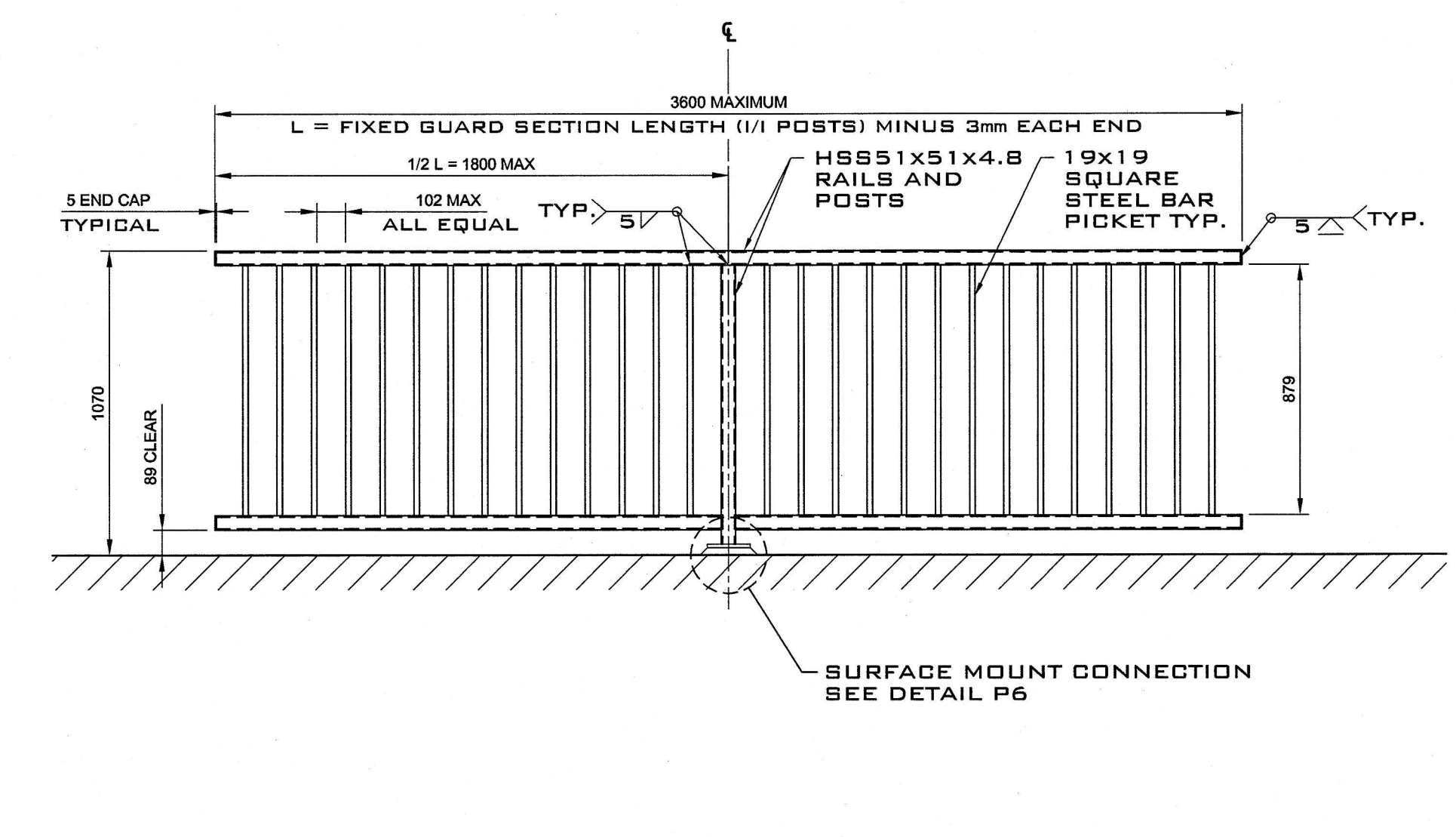
No	DATE	ISSUED FOR TENDER	BY
3	2018-02-22	ISSUED FOR TENDER	J.K.
2	2016-11-04	ISSUED FOR REVIEW	J.K.
1	2016-08-02	PRELIMINARY DESIGN - 66% STAGE	J.K.
0	2016-08-02	PRELIMINARY	J.K.



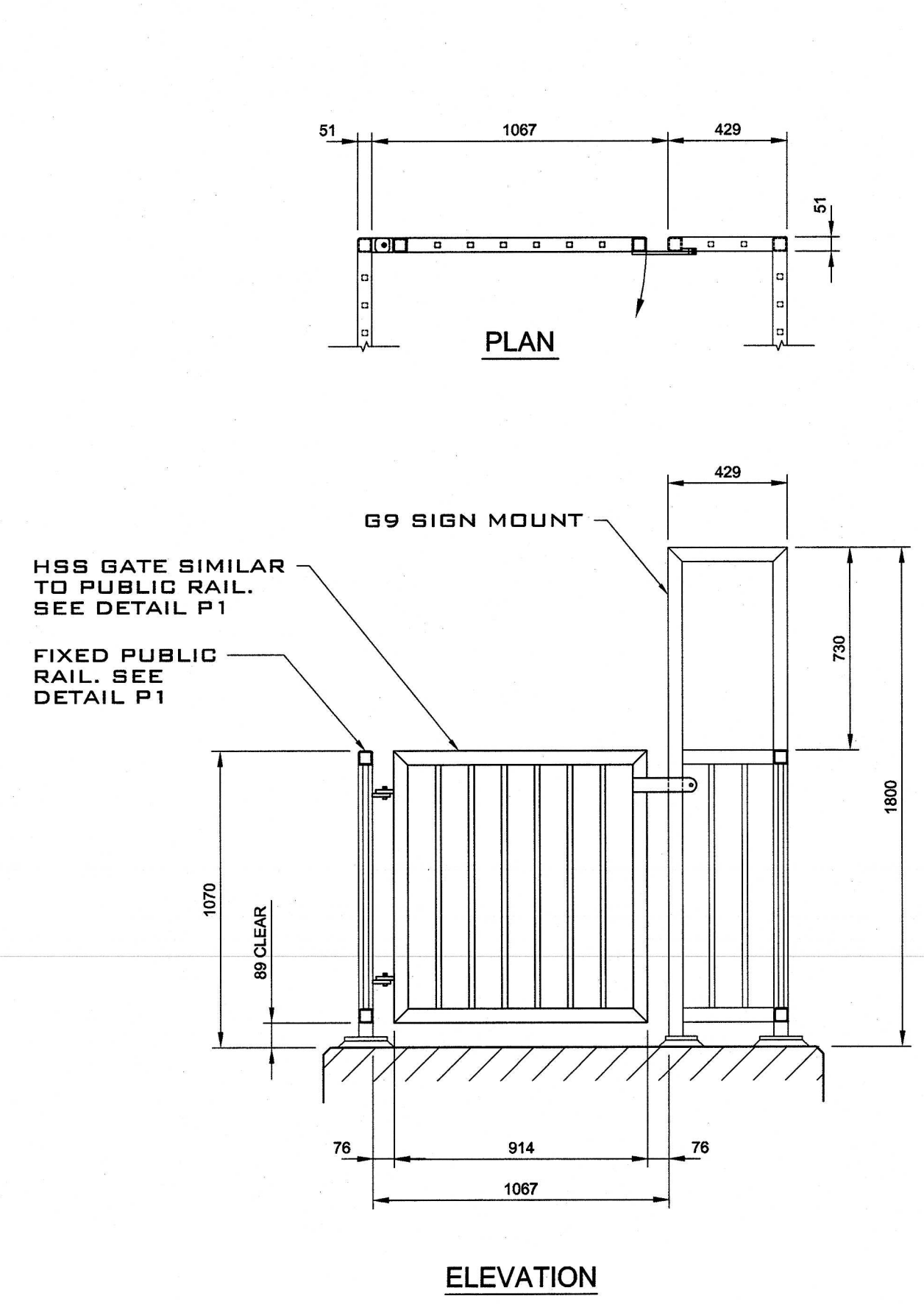
PIA - PICKET PANEL INSERT
1:20



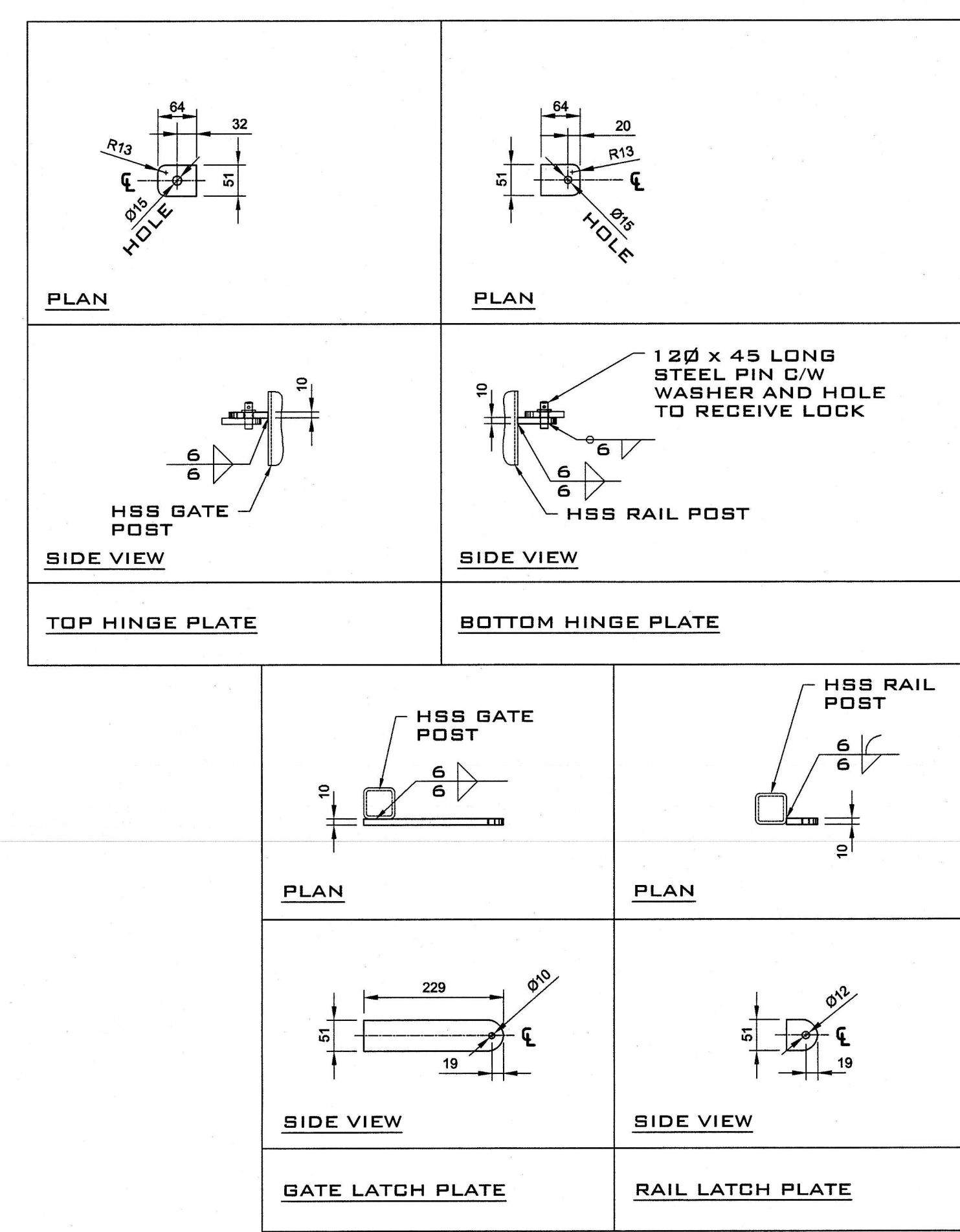
PI - FIXED RAIL SECTION
1:20



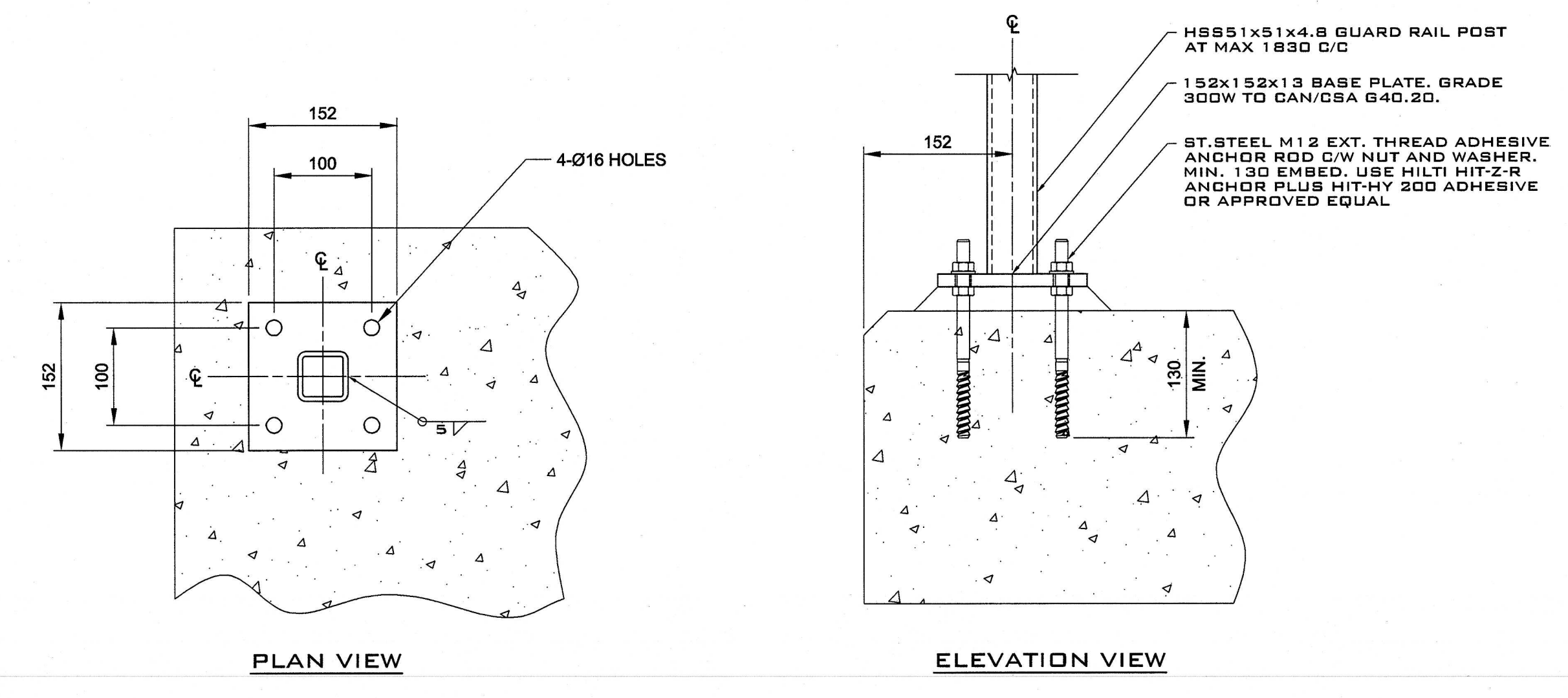
P2 - REMOVABLE SECTION
1:20



P3 - ACCESS GATE
1:20



P6 - SURFACE MOUNT CONNECTION
1:20



NOTES:
 1) BASE PLATES SHALL BE LEVELED TO PLUMB GUARD RAIL POSTS AS REQUIRED. WHERE SHIM AMOUNT EXCEEDS 13mm, USE OF LEVELING NUT AND A BED OF NON-SHRINKABLE GROUT OF THICKNESS MIN 25mm TO MAX 32mm SHALL BE USED AT UNDERSIDE OF PLATE. SLOPE SIDES OF GROUT BED AT 1:1 DOWN TO SURFACE.
 2) INSPECT SURFACE PRIOR TO INSTALLATION. WHERE SURFACE CONCRETE IS CRACKED OR SCALED IN EXCESS OF 6mm DEPTH THE SURFACE MUST BE REPAIRED PRIOR TO BASE PLATE INSTALLATION.

NOTES

- SEE DRAWING CV-002-01 FOR GENERAL NOTES, LEGEND AND ABBREVIATIONS.
- TYPICALLY A RUN OF GUARD RAIL SHALL CONSIST OF ALTERNATING FIXED AND REMOVABLE SECTIONS.
- COMPLETE ASSEMBLED SECTIONS ARE TO BE PAINTED WITH TWO COATS OF BLACK COLOUR EPOXY PAINT AFTER FABRICATION.

No	DATE	ISSUED FOR TENDER	BY
3	2018-02-22	ISSUED FOR TENDER	J.K.
2	2016-11-04	ISSUED FOR REVIEW	J.K.
1	2016-08-02	PRELIMINARY DESIGN - 66% STAGE	J.K.
0	2016-08-02	PRELIMINARY	J.K.

no date issues and/or modifications by

Canada
Parcs Canada

CIWA
900-3400 du Souvenir Blvd
Laval QC H7V 3Z2
Phone: 514 237-2462
Fax: 450 682-1013
www.ciwa.ca

ISO 9001

J. KONCZYNSKI
10113485
PROFESSIONAL ENGINEER
2018-02-22

project: **BOBS LAKE DAM REPLACEMENT
BOLINGBROKE - ONTARIO**

title: **STANDARD PUBLIC STYLE GUARDRAIL
FABRICATION DETAILS**

drawn	H. OTMANI	scale	AS SHOWN
checked	J. CARON	date	2016-07-28
designed	M. LAPLANTE	reference	
approved	J. KONCZYNSKI		

A0138 | A000492B | CV | 008 | 01 | 3