

LAND DRAINAGE SEWER PROFILE: CB16 TO CB5
H: 1 : 250, V: 1:100

DRAWING REFERENCE: C6.3

Project title

**Expansion and Redevelopment of the
North Portal Port of Entry
North Portal, Saskatchewan**

Drawn
by

GES

PWGSC

Proj. man. **James Hutchings**

Designed
by

GES

Project
no.

16-1962-001

Approved
by

CR

Date

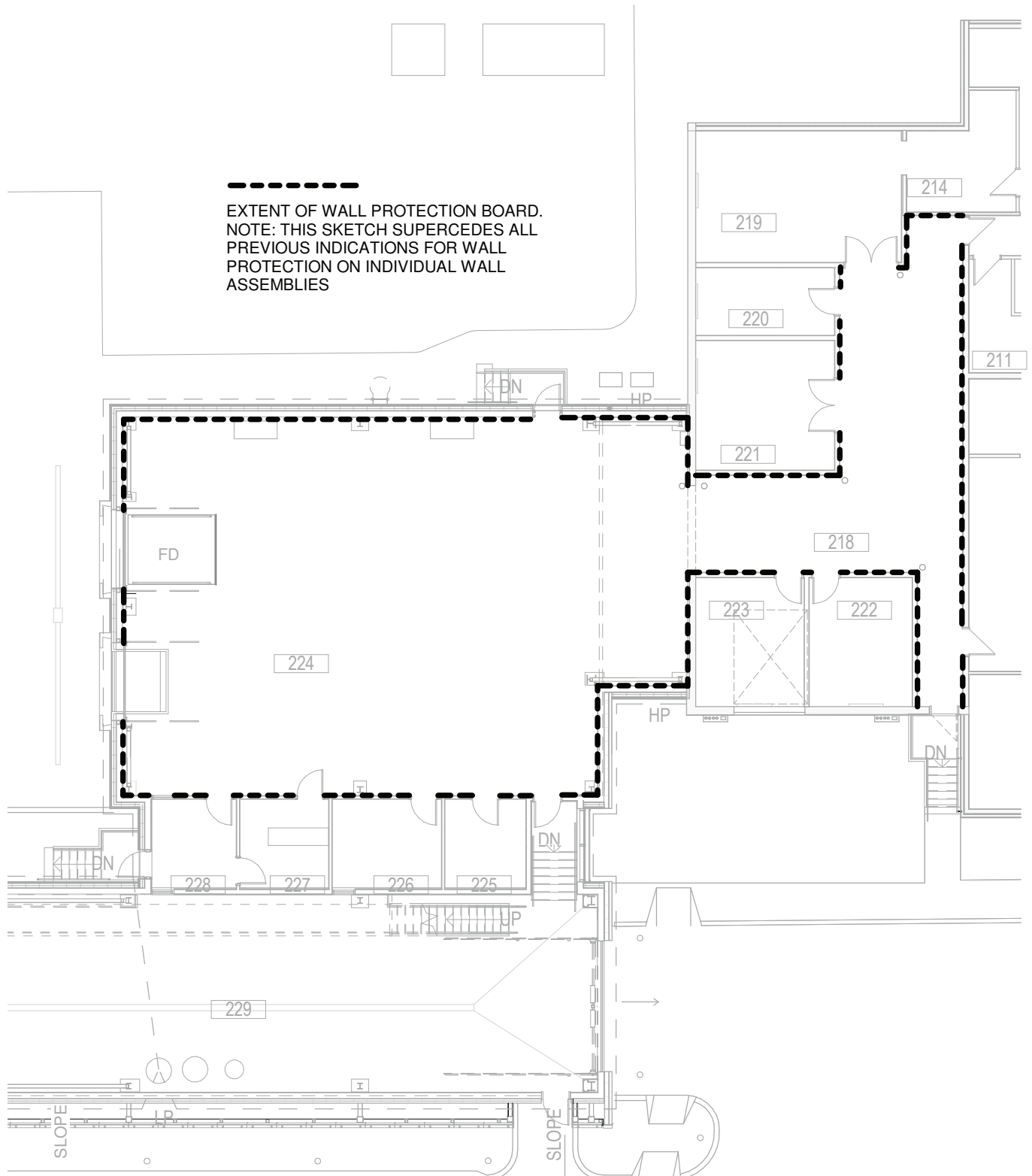
2018-03-20

Sheet

SK-C02

Revision

0



Project title

**Expansion and Redevelopment of the
North Portal Port of Entry
North Portal, Saskatchewan**

Drawn
by

DH

Designed
by

RB

Approved
by

RB

PWGSC

Proj. man. **James Hutchings**

Project
no.

16-00200

Date

2018-03-15

Sheet
ASK-07

Revision

0

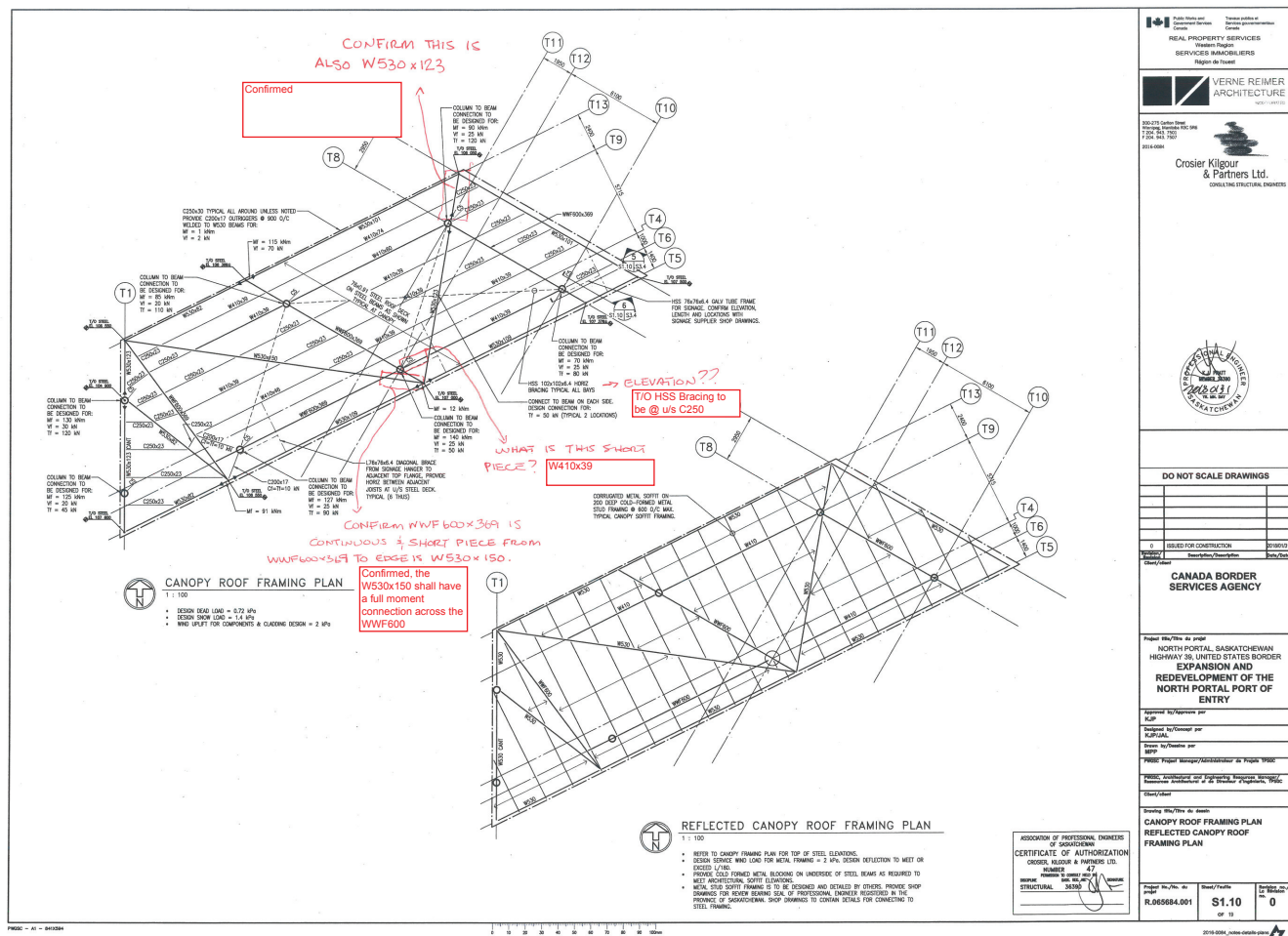
ROOM		FLOOR		WALLS								CEILING			REMARKS	NOTES
No.	NAME	FIN	BASE	NORTH		EAST		SOUTH		WEST		MAT	FIN	HEIGHT		
218	WAREHOUSE	EXIST	EXIST	GB/PLY	P	GB/PLY	P	GB/PLY	P	GB/PLY	P	GB	P	EXIST.	WALL PROT. BOARD	1
219	BOND ROOM	EXIST	EXIST	GB	P	GB	P	GB	P	GB	P	GB	-	EXIST.		
220	LOCKER ROOM	SLF	RCB	GB	P	GB	P	GB	P	GB	P	GB	P	EXIST.		3
221	FILE STORAGE	EXIST	EXIST	GB	P	GB	P	GB	P	GB	P	BG	P	EXIST.		
222	CCTV	EXIST	EXIST	GB/PLY	P	GB/PLY	P	GB/PLY	P	GB/PLY	P	GB	-	EXIST.	FIRE RATED ROOM	2
223	ELECTRICAL ROOM	EXIST	EXIST	GB/PLY	P	GB/PLY	P	GB/PLY	P	GB/PLY	P	GB	P	EXIST.	FIRE RATED ROOM	2
224	WAREHOUSE	CONC	CONC	GB/PLY	P	GB/PLY	P	GB/PLY	P	GB/PLY	P	EXP	P	U/S STRUCT	WALL PROT. BOARD	1
225	STORAGE	CONC	CONC	GB	P	GB	P	GB	P	GB	P	GB	P	3000		
226	OFFICE	SLF	RCB	GB	P	GB	P	GB	P	GB	P	ACT	-	3000		4
227	INTERVIEW	SLF	RCB	GB	P	GB	P	GB	P	GB	P	GB	P	3000	ABUSE RESISTANT GB	4, 5
228	DRIVER WAITING	SLF	RCB	GB	P	GB	P	GB	P	GB	P	GB	P	3000	ABUSE RESISTANT GB	4, 5
229	DRIVE THROUGH INSPECTION BAY	CONC	CONC	GB	P	GB	P	GB	P	GB	P	EXP	P	U/S STRUCT		
P101	PIL BOOTH 1	SRF	MTL	M	-	M	-	M	-	M	-	ACT	-	PER DWGS.	FLOOR NON-SLIP	
P102	PIL BOOTH 2	SRF	MTL	M	-	M	-	M	-	M	-	ACT	-	PER DWGS.	FLOOR NON-SLIP	
P103	PIL BOOTH 3	SRF	MTL	M	-	M	-	M	-	M	-	ACT	-	PER DWGS.	FLOOR NON-SLIP	
L101	LINK	CONC	CONC	GP	P	GB	P	GB	P	GB	P	ACT	-	2545		

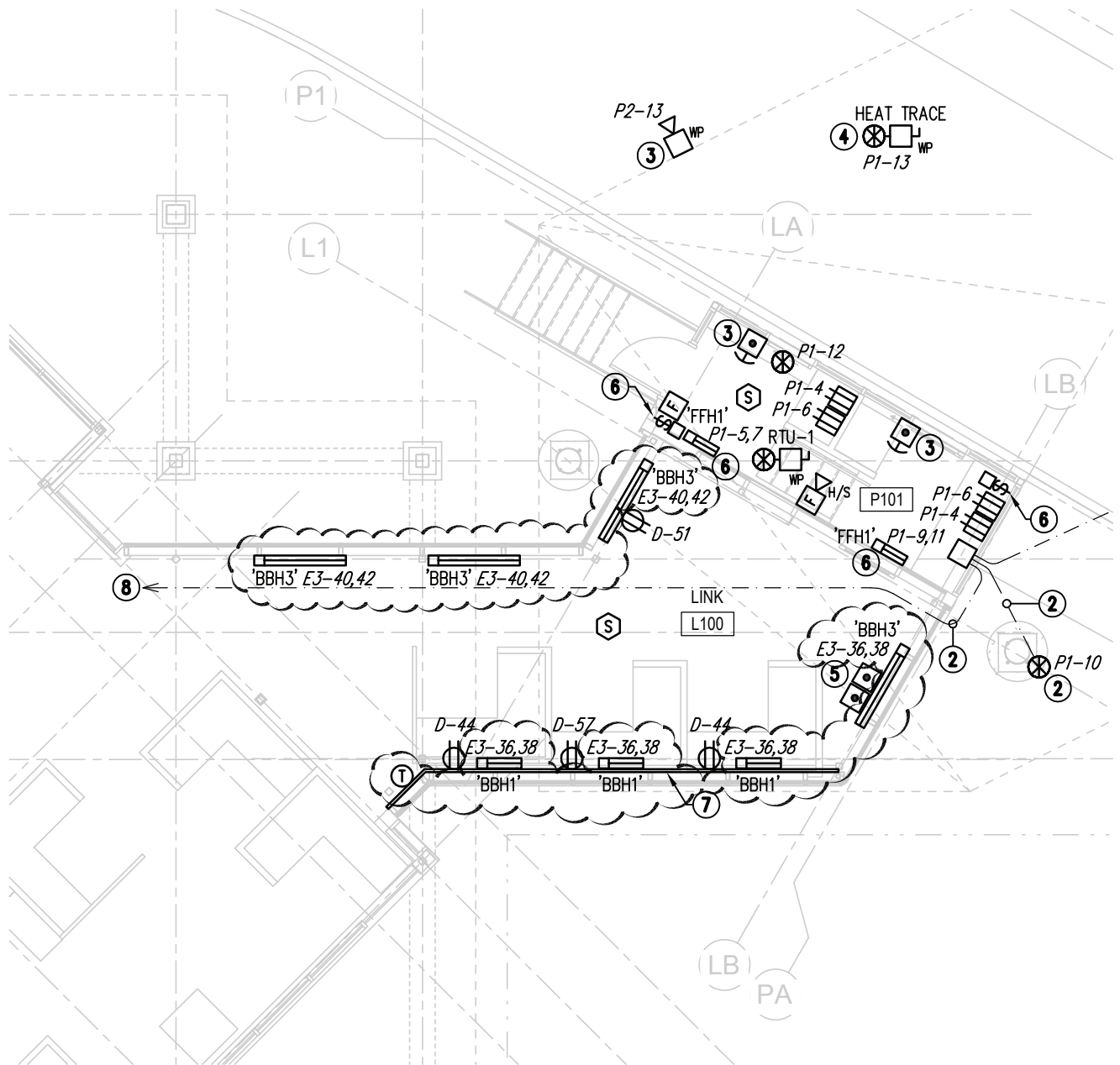
ABBREVIATIONS

ACP	ACOUSTICAL WALL PANEL	EXP	EXPOSED STRUCTURE	RTF	RUBBER TILE FLOORING
ACT	ACOUSTICAL TILE	FWC	FABRIC WALL COVERING	SEF	SEAMLESS EPOXY FLOORING
BR	BRICK	GB	GYPSUM BOARD	SF	SAFETY FLOORING
CB	CONCRETE BLOCK	HWC	HIGH BUILD WALL COATING	SRF	SHEET RUBBER FLOORING
CF	CLEAR FINISH	LMC	LINEAR METAL CEILING	SLF	SHEET LINOLEUM FLOORING
CH	CONCRETE HARDENER	M	MELAMINE PANEL	ST	STAIN FINISH
CONC	CONCRETE	P	PAINT FINISH	SVF	SHEET VINYL FLOORING
CS	CONCRETE SEALER	PLC	PARABOLIC LOUVER CEILING	VCT	VINYL COMPOSITION TILE
EP	EPOXY PAINT	PLY	PLYWOOD	VWC	VINYL WALL COVERING
EXIST	EXISTING	RCB	RUBBER COVE BASE	WD	WOOD
				WPL	WOOD PANELING

GENERAL NOTES:

- 16mm G1S PLYWOOD WALL PROTECTION BOARD TO 1220mm AFF, PAINTED BOTH SIDES AND EDGES
- FLOOR TO CEILING - 21mm FIRE RATED G1S PLYWOOD OR 21mm G1S PLYWOOD PAINTED BOTH SIDES AND EDGES WITH FIRE RETARDANT PAINT
- RCB TO LOCKER BASES AND EXPOSED GB WALL ONLY
- RCB TO ALL 4 WALLS, INCLUDING EXPOSED CONCRETE UPSTAND
- ABUSE-RESISTANT GB





NEW PIL BOOTH LINK – POWER & SYSTEMSLAYOUT



2

EP2.3

SCALE: 1:100

10896

MCW

MCW / AGE

Consulting Professional Engineers
210-1821 Wellington Avenue
Winnipeg, Manitoba, R3H 0G4
Phone - (204) 779-7900 Fax - (204) 779-1119
E-Mail: mcw_wpg@mcw.com

PROJECT:

**EXPANSION & REDEVELOPMENT OF THE
NORTH PORTAL: PORT OF ENTRY**

DESCRIPTION:

**NEW PIL BOOTH LINK –
POWER & SYSTEMS LAYOUT**

DATE:

2018-03-21

DRAWN BY:

GA

SCALE:

N.T.S.

REF. DWG. NO.

2/EP2.3

DWG. NO.

RE3.1

ISSUED WITH:

ADD#04E