



- | | | |
|-----|---|-----------------------|
| ABL | - | ABOVE BASELINE |
| BHD | - | BULKHEAD |
| BL | - | BASELINE |
| CL | - | CL |
| DN | - | DOWN |
| FR. | - | FRAME |
| OCL | - | OFF CENTRELINE |
| P | - | PORT |
| REF | - | REFERENCE |
| RM | - | ROOM/COMPARTMENT |
| Rx | - | RECEIVE |
| S | - | STARBOARD |
| SS | - | STAINLESS STEEL |
| SVS | - | SPEED VELOCITY SENSOR |
| SWL | - | SUMMER WATER LINE |
| Tx | - | TRANSMIT |
| Typ | - | TYPICAL |
| VL | - | VERTICAL LADDER |
| WT | - | WATERTIGHT |

GENERAL NOTES:

- A. DIMENSIONS MARKED WITH * ARE SUGGESTED DIMENSIONS. MODIFY TO SUIT. VERIFY FINAL GEOMETRY FOR ANY INTERFERENCES.
- B. THIS DRAWING IS FOR DESIGN GUIDANCE ONLY, NOT TO BE USED DIRECTLY FOR CONSTRUCTION. COMPLETE DETAIL ENGINEERING DESIGN BASED ON FINAL AS-SELECTED EQUIPMENT.
- C. RX & TX CONDUIT CONNECTIONS ARE TO BE WELDED THROUGHOUT. USE INDUCTION BENDING OR SIMILAR FOR CONDUIT BENDS.

DESIGN NOTES:

- *1- DESIGN DRAWING - NOT FOR CONSTRUCTION
ADJUST DIMENSIONS TO SUIT.
- *2- ENSURE CONDUIT CLEARS TANK TOP DECK
BEAMS.
- *3- EXISTING ECHO SOUNDER ACCESS TO BE
CLOSED OFF.
- *4- AS PER EXISTING VENTS ON INBOARD SIDE
(MIN. 760 mm).
- *5- FOR ACCESS, REFER TO STRUCTURAL
MODIFICATIONS DRAWING.
- *6- CONDUIT PRESSURE RELIEF HULL
PENETRATIONS TO BE FIT WITH SUBSTANTIAL
GRATINGS, SUFFICIENT TO PREVENT ICE
INGRESS. FLUSH WITH HULL.
- *7- CONFIRM WITH SVS INSTALLATION MANUAL

	SEE SHEET 1		
rev	description	by	date

Asset - Actif	

CCGS HENRY LARSEN

INSTALLATION OF A MULTI-BEAM SOUNDER

Drawing - Dessin

TRANSDUCER CONDUIT ARRANGEMENT

designed - conception

 TDZ | 2017-12-1 |

drawn - dessiné

drawn	decide	date
TDZ	2012-12-2	

checked - vérifié

BC	2012-12-2
----	-----------

approved - approuvé

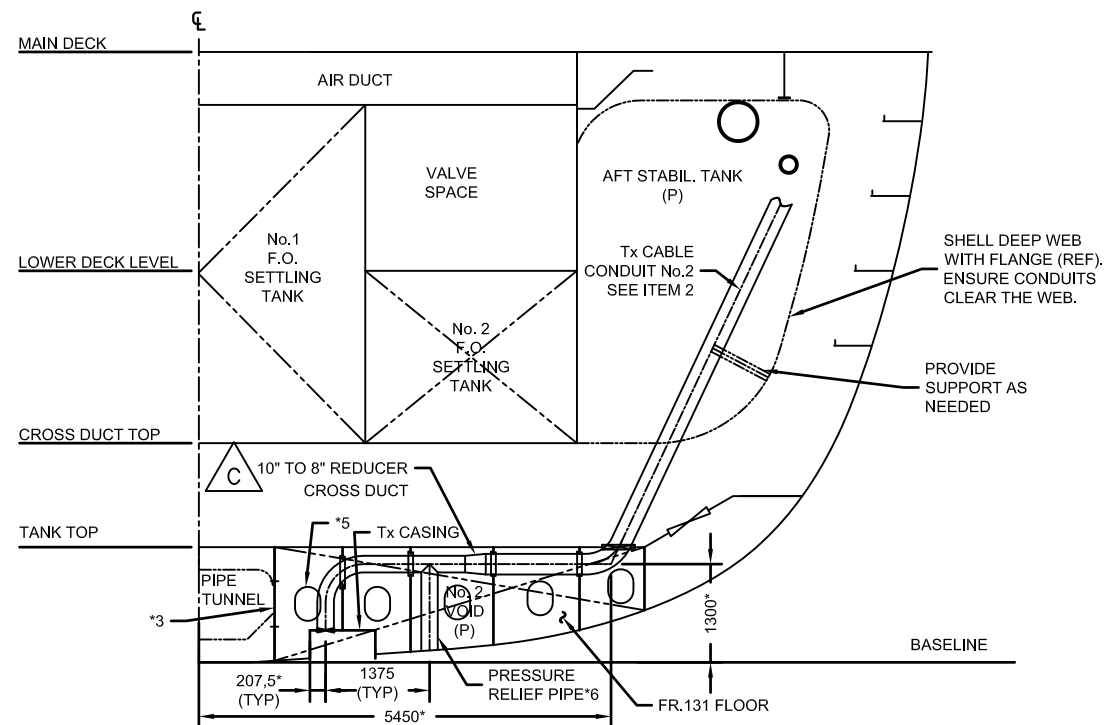
EG	2012-12-2
----	-----------

CCG ref. no. - no. réf. GCC	scale - échelle
-----------------------------	-----------------

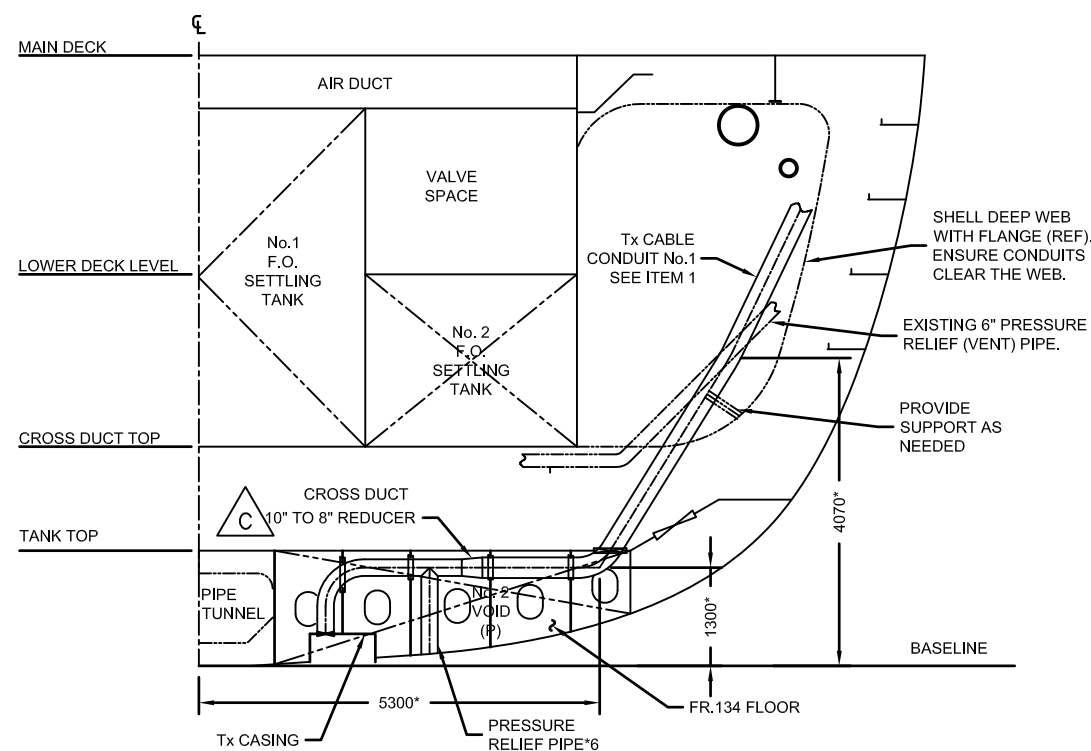
F7048-090005	1:100
--------------	-------

drawing no. - no. dessin	sheet-feuille	rev
--------------------------	---------------	-----

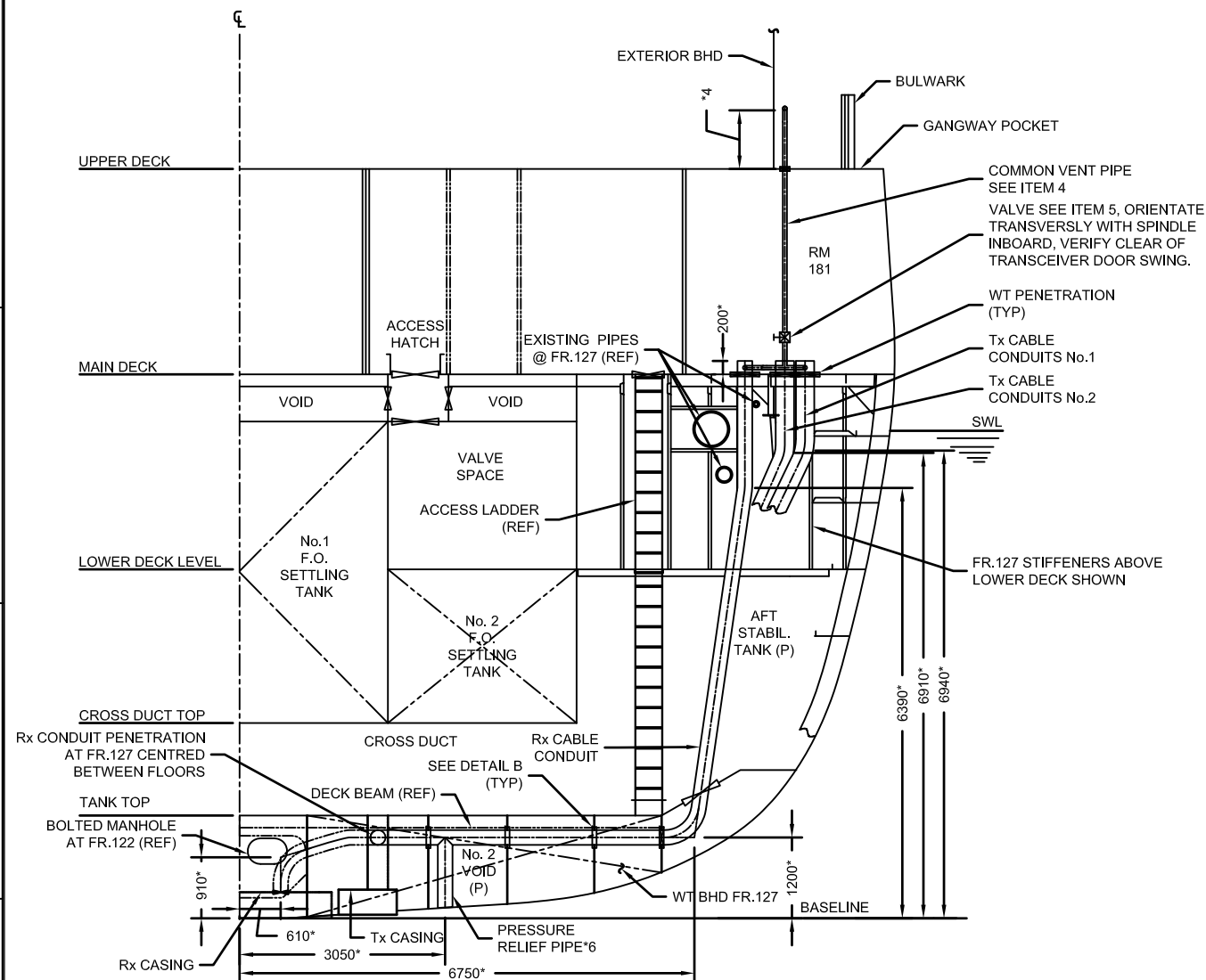
21262	02/02	C
-------	-------	---



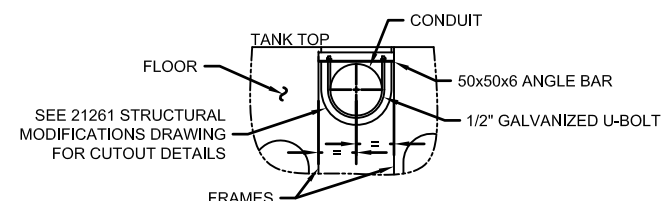
SECTION AT FR. 132 + 400mm
LOOKING AFT



SECTION AT FR. 134 + 400mm
LOOKING AFT



SECTION AT FR. 128 + 400mm
LOOKING AFT



DETAIL B
NON-WT FLOOR PENETRATION SUPPORT
SCALE 1:40