

NOTES:

1. SHIPYARD TO PROVIDE A WELDING PROCEDURE, MATERIALS, AND WORKMANSHIP IN ACCORDANCE WITH CLASS REQUIREMENTS AND APPROVED WELDING SCHEDULE.
2. REFER TO THE LATEST REVISION OF MANUFACTURER'S SPECIFICATIONS FOR Rx AND Tx TRANSDUCER HOUSING.
3. USE ONLY FINAL LOFTED HULL SHAPE FOR PRODUCTION DESIGN. DO NOT RELY ON MEASUREMENTS FROM THIS DRAWING.



Fisheries and Oceans  
Canada  
Canadian  
Coast Guard

Pêches et Océans  
Canada  
Garde côtière  
Canadienne



**ROBERT ALLAN LTD.**  
NAVAL ARCHITECTS AND MARINE ENGINEERS  
230-1639 West 2nd Avenue  
Vancouver, B.C. V6J 1H3  
Canada  
web info@ral.ca  
email info@ral.ca  
phone 604-736-9466

E	REVISED AS PER CCGS COMMENTS	RDB	2018-04-10
D	REVISED AS PER CCGS COMMENTS	RDB	2018-04-06
C	CORRECTIONS TO RX SEC 'B-B' (P.6)	RDB	2018-01-15
B	ADDITIONAL DWGS	RDB	2018-01-12
A	PRELIMINARY	RDB	2017-12-22
rev	description	by par	date

Asset - Actif			
CCGS HENRY LARSEN			
INSTALLATION OF A MULTI-BEAM SOUNDER			
Drawing - Dessin			
Rx AND Tx TRANSDUCER HOUSING			
designed - conception		date	
RDB		2017-12-13	
drawn - dessiné		date	
RDB		2017-12-13	
checked - vérifié		date	
----		----	
approved - approuvé		date	
----		----	
CCG ref. no. - no. réf. GCC		scale - échelle	
REF NO / PROJ NO / FILE NO		N/A	
drawing no. - no. dessin		sheet-feuille	rev
21260		01/10	E

Fisheries and Oceans  
Canada  
Canadian  
Coast GuardPêches et Océans  
Canada  
Garde côtière  
Canadienne**ROBERT ALLAN LTD.**  
NAVAL ARCHITECTS AND MARINE ENGINEERS  
230-1639 West 2nd Avenue  
Vancouver, B.C. V6J 1H3  
web: www.ra.ca  
email: info@ra.ca  
phone: 604-736-9466

21260

C

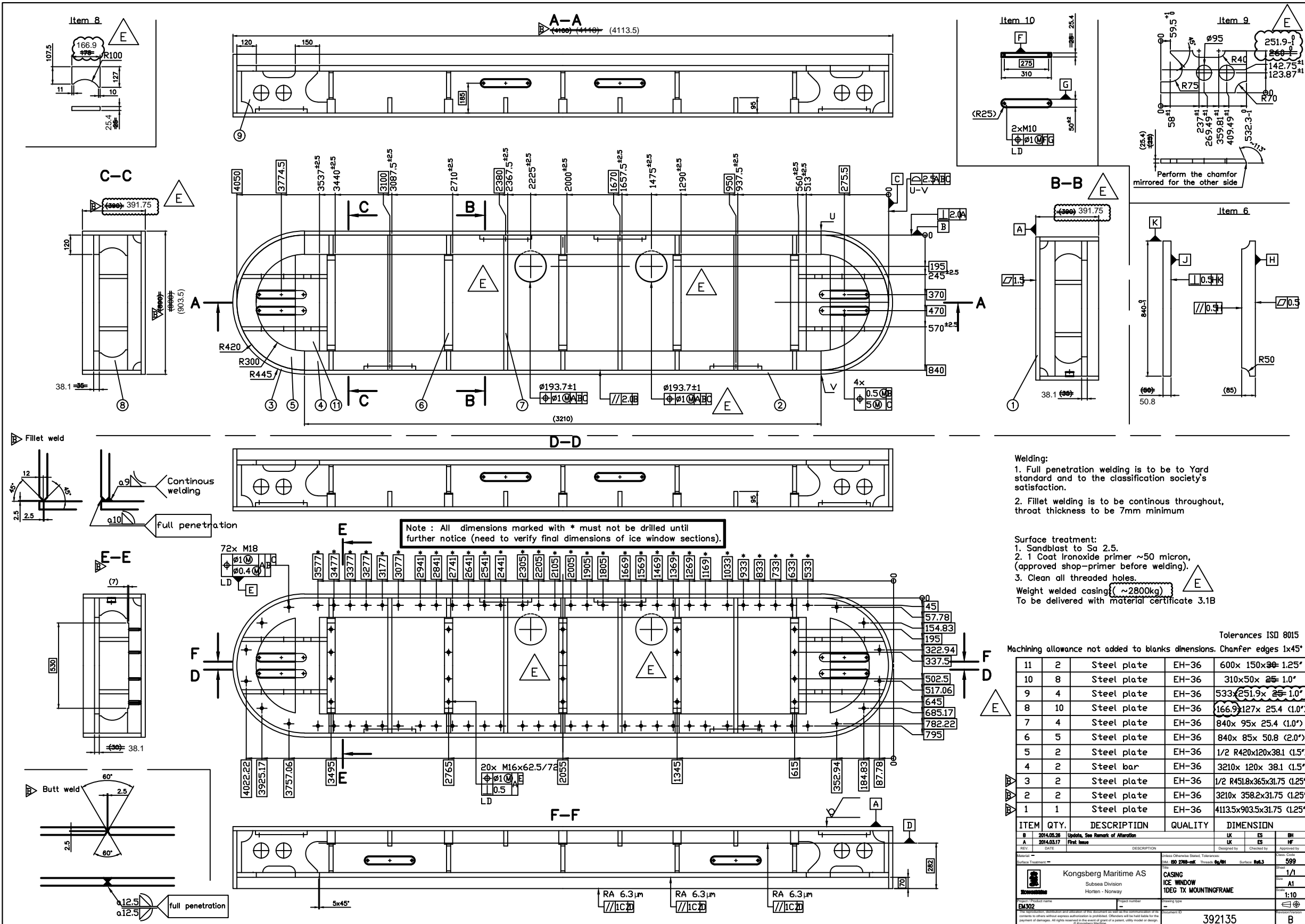
B

A

21260

File / Fichier: 217-049 21260 RX AND TX TRANSDUCER HOUSING.DWG - Printed / Imprimé: 2018/04/10 10:38

ANSI B



Welding:

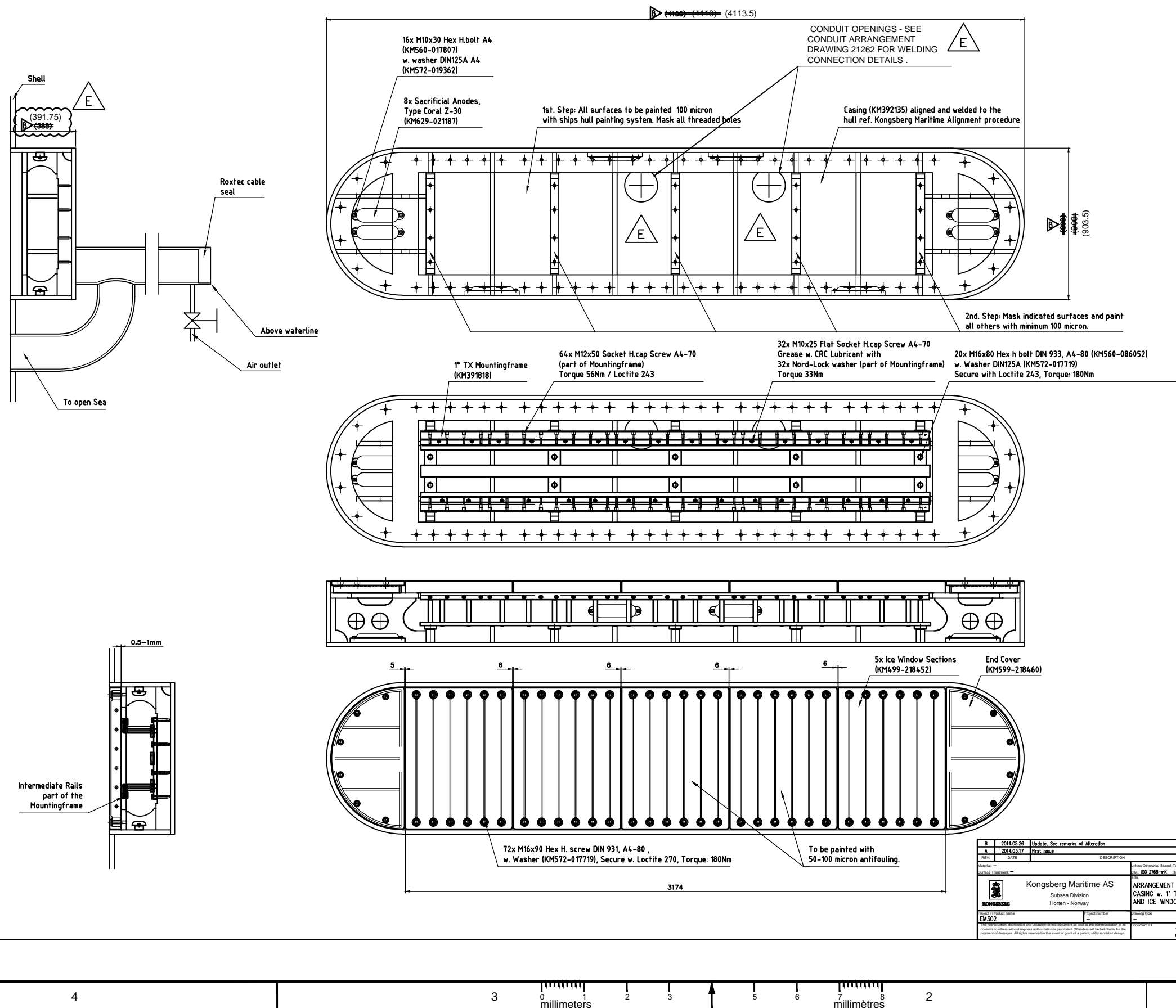
1. Full penetration welding is to be to Yard standard and to the classification society's satisfaction.
2. Fillet weld is to be continuous throughout, throat thickness to be 7mm minimum

Surface treatment:

1. Sandblast to Sa 2.5.
2. 1 Coat Ironoxide primer ~50 micron, (approved shop-primer before welding).
3. Clean all threaded holes.

Weight welded casing (~2800kg)  
To be delivered with material certificate 3.1B

Tolerances ISO 8015				
Machining allowance not added to blanks dimensions. Chamfer edges 1x45°				
11	2	Steel plate	EH-36	600x 150x38 1.25"
10	8	Steel plate	EH-36	310x50x 25 1.0"
9	4	Steel plate	EH-36	533x251.9x 25 1.0"
8	10	Steel plate	EH-36	166.9x127x 25.4 (1.0")
7	4	Steel plate	EH-36	840x 95x 25.4 (1.0")
6	5	Steel plate	EH-36	840x 85x 50.8 (2.0")
5	2	Steel plate	EH-36	1/2 R420x120x38.1 (1.5")
4	2	Steel bar	EH-36	3210x 120x 38.1 (1.5")
3	2	Steel plate	EH-36	1/2 R451.8x365x31.75 (1.25")
2	2	Steel plate	EH-36	3210x 358.2x31.75 (1.25")
1	1	Steel plate	EH-36	4113.5x903.5x31.75 (1.25")
ITEM	QTY.	DESCRIPTION	QUALITY	DIMENSION
B	2014.05.28	Update, See Remark of Alteration	UK	ES BH
A	2014.03.17	First Issue	UK	ES HF
REV.	DATE	DESCRIPTION	Designed by	Checked by Approved by
Material: 1. Sandblast to Sa 2.5. 2. 1 Coat Ironoxide primer ~50 micron, (approved shop-primer before welding). 3. Clean all threaded holes.				
Kongsberg Maritime AS			599	
Subsea Division			1/1	
Horten - Norway			A1	
Drawing type			1:10	
Drawing no.			16	
Drawing title			32135	
Drawing scale			Revision: 0	
Drawing date			B	



E	REVISED AS PER CCGS COMMENTS	RDB	2018-04-10
D	REVISED AS PER CCGS COMMENTS	RDB	2018-04-06
C	CORRECTIONS TO RX SEC "B-B" (P.6)	RDB	2018-01-15
B	ADDITIONAL DWGS	RDB	2018-01-12
A	PRELIMINARY	RDB	2018-12-22
rev	description	by	date

Asset - Actif	
---------------	--

CCGS HENRY LARSEN

## INSTALLATION OF A MULTI-BEAM SOUNDER

Drawing - Dessin

Tx TRANSDUCER HOUSING

designed - conception
-----------------------

RDB	2017-12-13	049
-----	------------	-----

drawn - dessiné

RDB 2017-12-13

checked - vérifié

-----

approved - approuvé
---------------------

-----

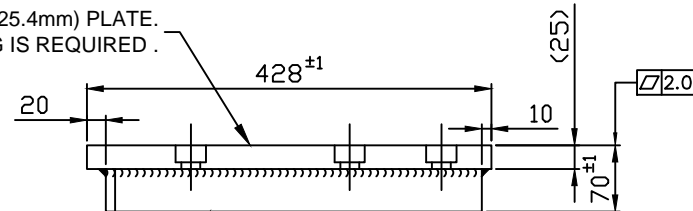
CCG ref. no. - no. réf. GCC	scale - échelle
-----------------------------	-----------------

REF NO / PROJ NO / FILE NO 1:25

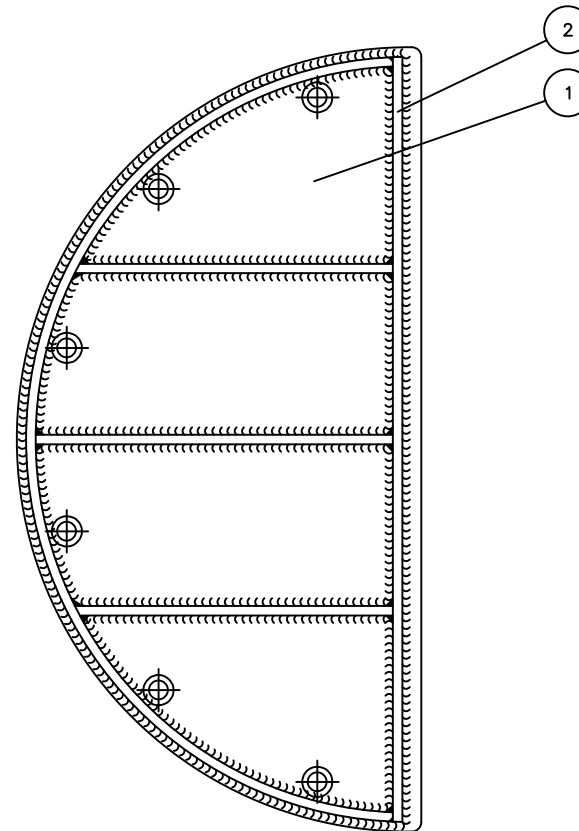
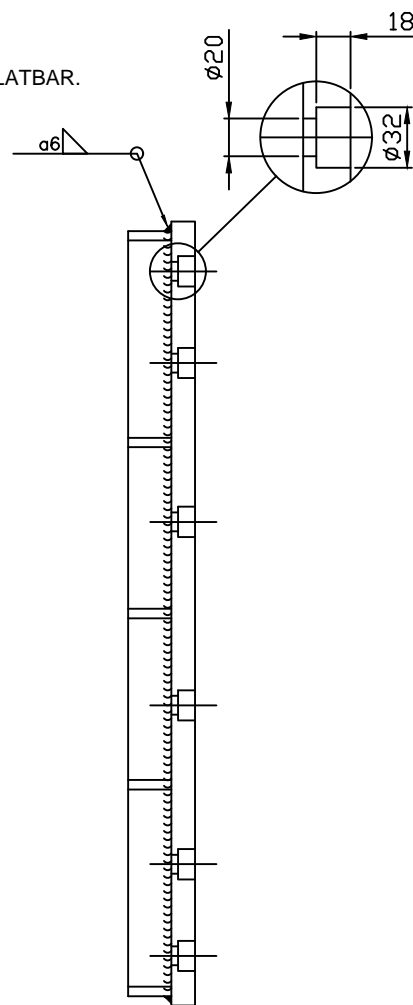
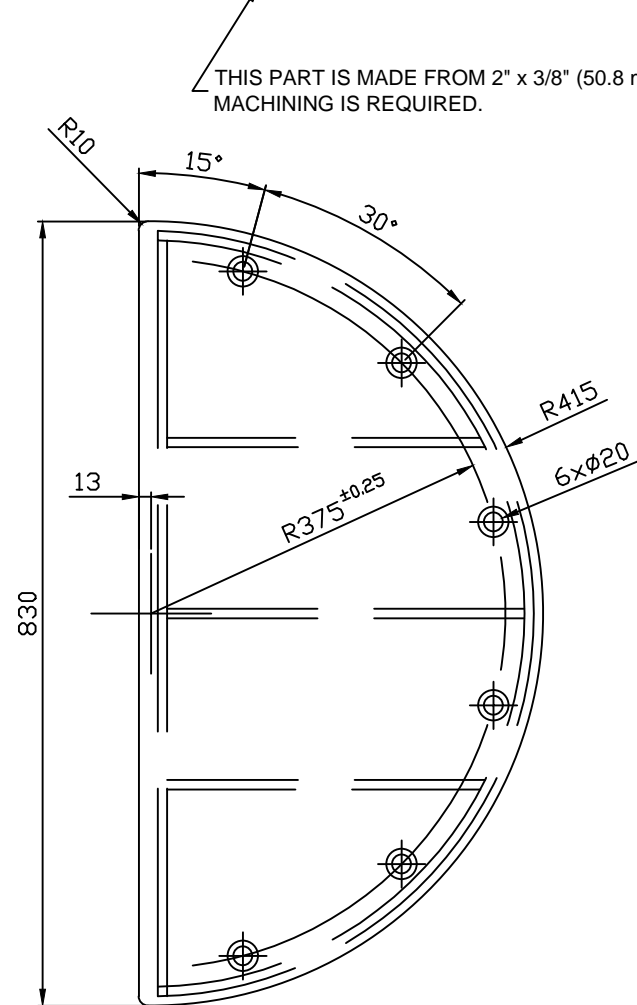
drawing no. - no. dessin	sheet-feuille	rev
--------------------------	---------------	-----

21260	03/10	E	AN
-------	-------	---	----

THIS PART IS MADE FROM 1" (25.4mm) PLATE.  
MACHINING IS REQUIRED .





THIS PART IS MADE FROM 2" x 3/8" (50.8 mmX 9.525mm) FLATBAR.  
MACHINING IS REQUIRED.




Surface treatment:

1. Sandblast to Sa 2.5
2. 1 coat Iron oxide primer, ~50 micron

S355J2G3 equal to: DIN 17100 St52-3N, DNV NVE 36, Lloyds EH 36

2		Steel bar	S355J2G3	50.8x9.525 (2"x3/8") x~3200 <del>50.8x9.525 x~3200</del>
1		Steel plate	S355J2G3	25.4(1")x 840x450 <del>25.4x 840x450</del>
ITEM	QTY.	DESCRIPTION	QUALITY	DIMENSION
REV./SIGN. DATE				
PROJ. METHOD		UNLESS OTHERWISE DIM.: ISO 2768-mK	STATED, TOLERANCE: THREAD: 6g/6H	PARTS LIST: 599-218460
SCALE	1:5	END SECTION		
DRAWN	03.02.18	EEn	TX CASING	
CHECKED	14.03.12	LK	ICE WINDOW	
APPROVED	14.03.12	HF	EM300	
				SHEET 1 OF 1    SH.SIZE: A2    REV.: <div>871-218461</div> <div>A</div>
				FILE NO.: 732-89

 Fisheries and Oceans Canada  
Pêches et Océans Canada



**ROBERT ALLAN LTD.**  
NAVAL ARCHITECTS AND MARINE ENGINEERS  
230-1639 West 2nd Avenue  
Vancouver, B.C. V6J 1H3  
Canada

web [www.ral.ca](http://www.ral.ca)  
email [info@ral.ca](mailto:info@ral.ca)  
phone 604-736-9466

E	REVISED AS PER CCGS COMMENTS	RDB	2018-04-10
D	REVISED AS PER CCGS COMMENTS	RDB	2018-04-06
C	CORRECTIONS TO RX SEC 'B-B'(P.6)	RDB	2018-01-15
B	ADDITIONAL DWGS	RDB	2018-01-12
A	PRELIMINARY	RDB	2017-12-22
rev	description	by	date

Asset - Actif	
---------------	--

CCGS HENRY LARSEN

## INSTALLATION OF A MULTI-BEAM SOUNDER

Drawing - Dessin

Tx TRANSDUCER HOUSING

designed - conception
-----------------------

RDB	2017-12-13	2018-01-01
-----	------------	------------

drawn - dessiné
-----------------

RDB	2017-12-13	3
-----	------------	---

checked - vérifié

1	---	1	13/
---	-----	---	-----

approved - approuvé
---------------------

-----

CCG ref. no. - no. réf. GCC

REF NO / PROJ NO / FILE NO	1:8	0
----------------------------	-----	---

drawing no. - no. dessin	sheet-feuille	rev	0
--------------------------	---------------	-----	---

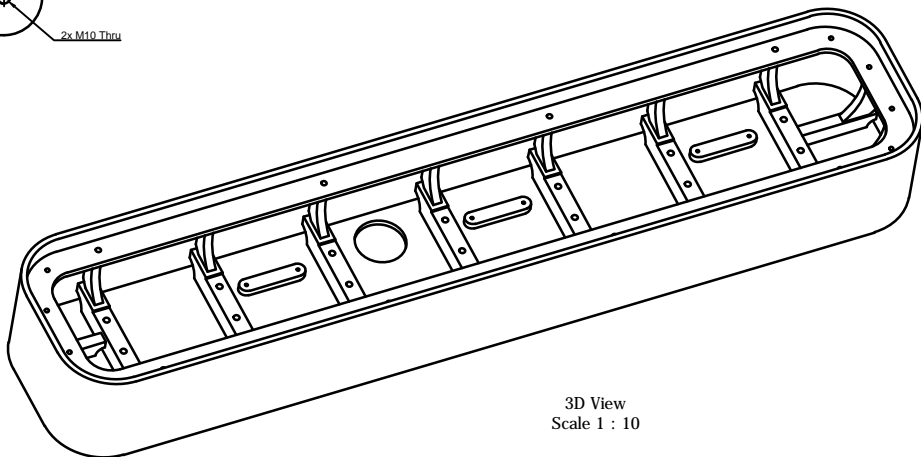
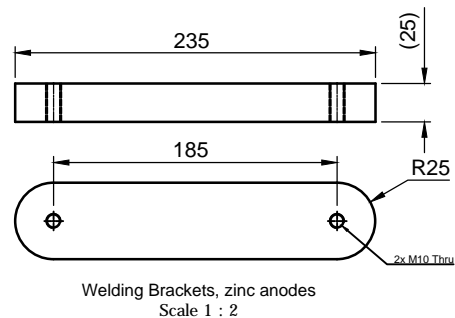
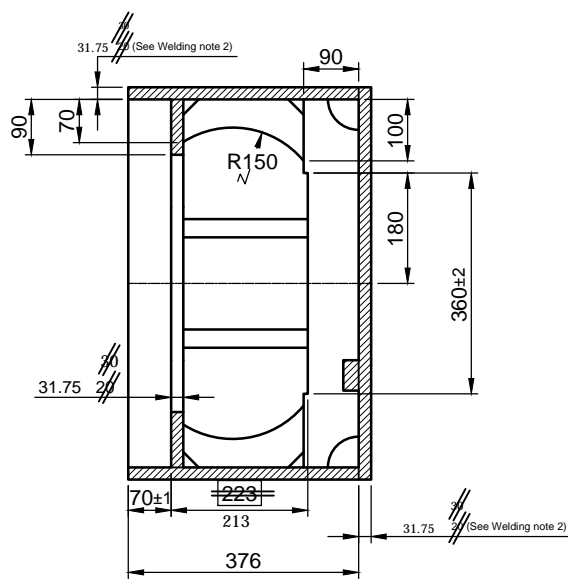
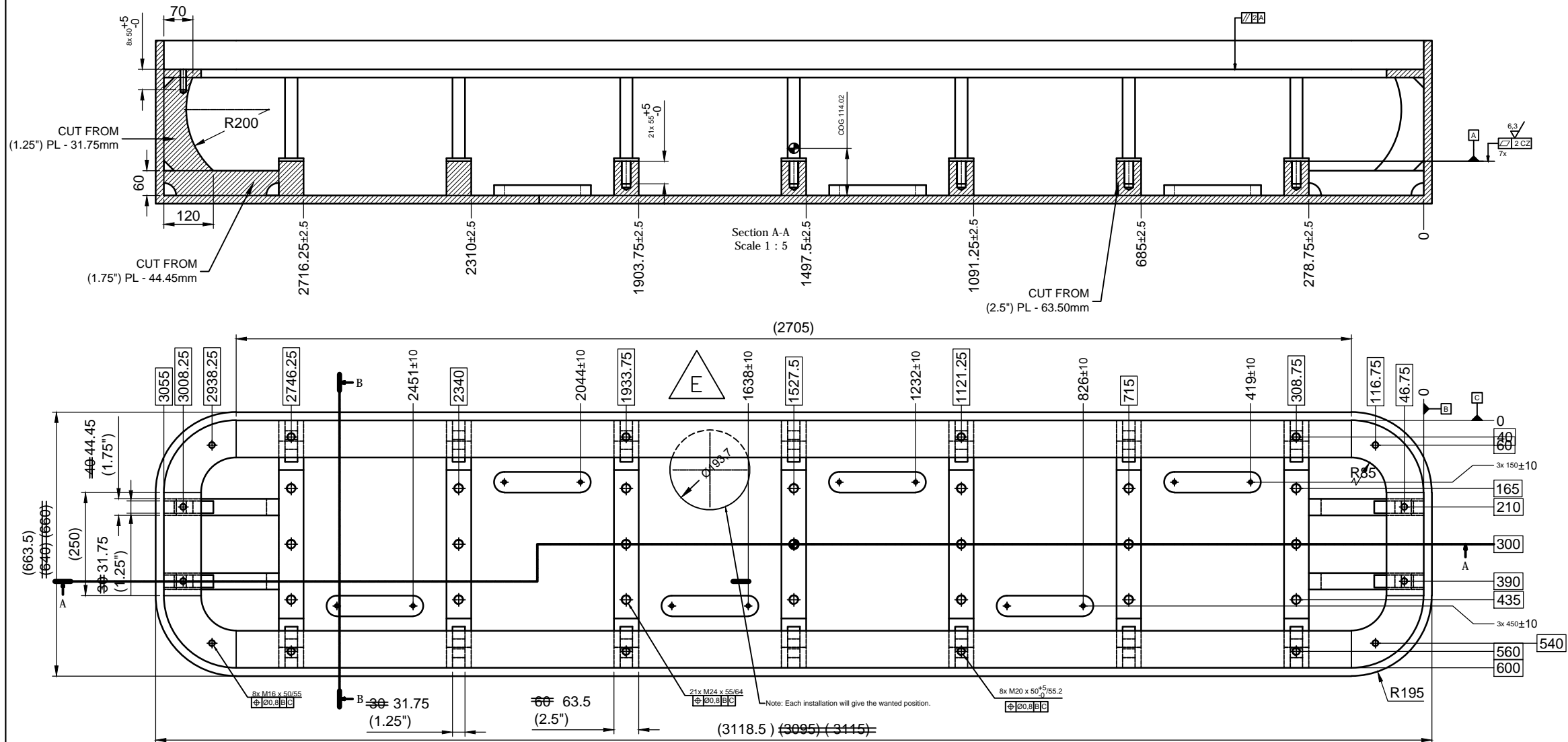
21260	04/10	E	Z
-------	-------	---	---



C

B

A



ALL STEEL EH36.  
ALL STEEL 1.25" - 31.75mm THICKNESS UNLESS OTHERWISE INDICATED.

## Note:

- Welding:
  1. Welding procedure to be given by shipyard/workshop.
  2. If the casing is welded into the hull, the steel quality and plate thickness must be considered and the installation as a whole to be approved by a classification society.
- Surface treatment:
  1. To be sandblasted to 2.5
  2. To be painted with iron oxide primer, 50 micron
  3. Clean all threaded holes.
- Machining allowance not added to blanks.
- Corrosion protection by zinc anodes or similar to be added by shipyard.
- Weight 1049 kg

Rev.	Date	Description	Designed by	Checked by	Approved by
A		Steel, NVA (See Welding note 2)			
B		Surface treatment (See Surface treatment note)			
C		CASING			
D		ICE WINDOW			
E		2 DEGREES RX			
F		EM302			
G		Underwater Mapping			
H		Project number / Item ID	430256		
I		Drawing type	632 Miscellaneous		
J		Scale	1 : 5		
K		Project	430256		
L		Sheet	A		



Fisheries and Oceans  
Canada  
Canadian  
Coast Guard

Pêches et Océans  
Canada  
Garde côtière  
Canadienne



**ROBERT ALLAN LTD.**  
NAVAL ARCHITECTS AND MARINE ENGINEERS  
230-1639 West 2nd Avenue  
Vancouver, B.C. V6J 1H3  
Canada  
web: www.raai.ca  
email: info@raai.ca  
phone: 604-736-9466

rev	description	by	date
E	REVISED AS PER CCGS COMMENTS	RDB	2018-04-10
D	REVISED AS PER CCGS COMMENTS	RDB	2018-04-06
C	CORRECTIONS TO RX SEC "B-B" (P.6)	RDB	2018-01-15
B	ADDITIONAL DWGS	RDB	2018-01-12
A	PRELIMINARY	RDB	2017-12-22

Asset - Actif

CCGS HENRY LARSEN

INSTALLATION OF A  
MULTI-BEAM SOUNDER

Drawing - Dessin

Rx TRANSDUCER HOUSING

designed - conception	date
RDB	2017-12-13
drawn - dessiné	date
RDB	2017-12-13
checked - vérifié	date
----	----
approved - approuvé	date
----	----
CCG ref. no. - no. réf. GCC	scale - échelle
REF NO / PROJ NO / FILE NO	NTS
drawing no. - no. dessin	sheet-feuille
21260	06/10
	rev
	E

21260

4

3

0

1

2

3

5

6

7

8

2

millimeters

millimètres

1

The copyright of this drawing and of all annexes which are entrusted to a person's care always remain the property of Kongsberg Maritime AS. They must not be copied or duplicated nor shown to or placed at the disposal of third persons without our written consent.

C

B

A

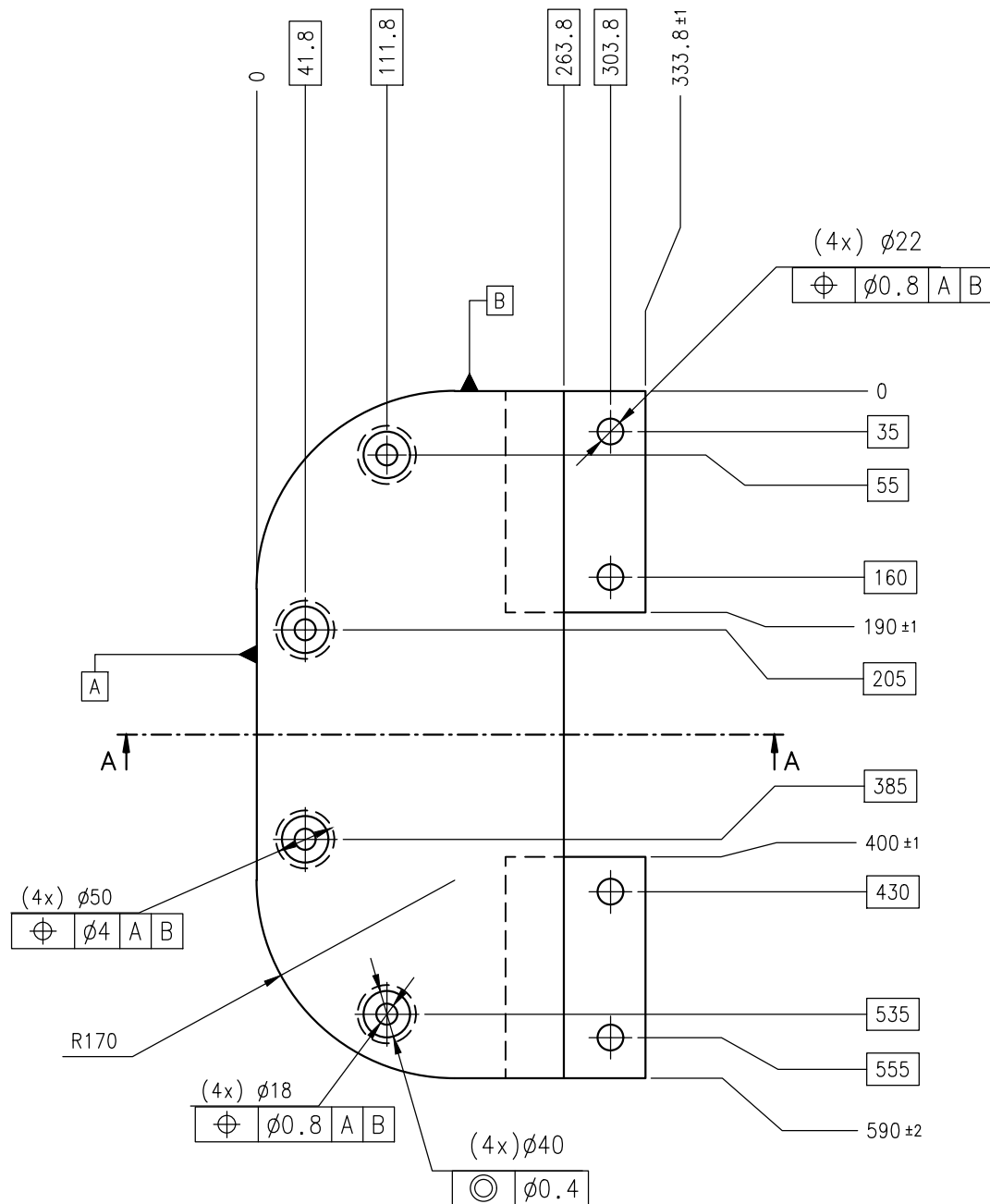
21260

CAD PRODUCED DRAWING  
PRODUIT PAR DAO

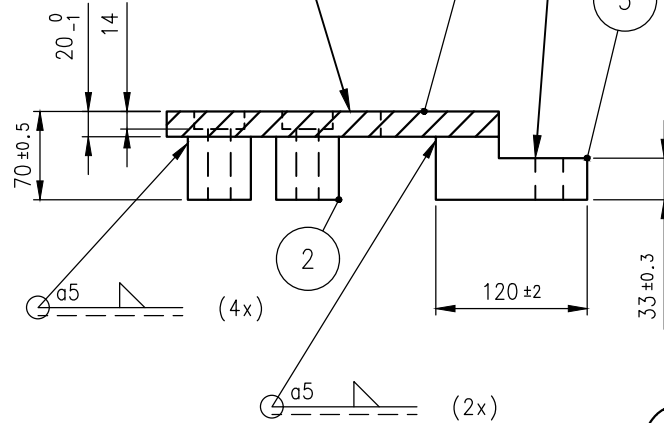
0 1  
inches

3 4  
pouces

REPORT ANY ERRORS OR OMISSIONS TO ILS MANAGER  
SIGNALER LES ERREURS OU LES OMISSIONS AU GESTIONNAIRE SLI



THIS PART IS MADE FROM 7/8"  
(22.225mm) PLATE.  
MACHINING IS REQUIRED TO  
OBTAIN THICKNESS INDICATED.



THIS PART IS MADE FROM 2"  
(50.8mm) PLATE.  
MACHINING IS REQUIRED.

SECTION A-A  
SCALE 1:5

ISOMETRIC  
SCALE 1:10

Weight 38 kg

- Surface treatment:
1. Sandblast to Sa 2.5
  2. 1 Coat iron oxide primer ~50 micron (approved shop primer before welding)
  3. Final paint, same system as used on ships hull.

ITEM	Q'TY	DESCRIPTION	QUALITY	DIMENSION
3	2	Steel bar	<del>S235J0</del> EH36	190 x 120 x <del>50mm</del> 50.8mm(2")
2	4	Steel bolt	S235J0	Ø50 x 50 mm
1	1	Steel plate	<del>S235J0</del> EH36	590 x 263.8 x <del>20mm</del> 22.225mm(7/8")

MATERIAL: Steel, S235J0 SURFACE TREATMENT: See drawing			UNLESS OTHERWISE STATED, TOLERANCES: DIM.: ISO2768-mK THREADS: 6g/6H SURFACE: -			PROJ. METHODE	
ENDPLATE A ICEWINDOW RX EM302			SCALE 1:5 ALTERNATIVE SCALE 1:10				
ORIGIN DATE 2010.12.01			DESIGNED ES	APPROVED HF			
SIZE A3			SHEET 1 OF 1			CLASS. CODE 599	ITEM ID 353859
						REV. A	REV. DATE. 2010.12.01

Fisheries and Oceans  
Canada  
Canadian  
Coast Guard

Pêches et Océans  
Canada  
Garde côtière  
Canadienne

**ROBERT ALLAN LTD.**  
NAVAL ARCHITECTS AND MARINE ENGINEERS  
230-1639 West 2nd Avenue  
Vancouver, B.C. V6J 1H3  
Canada

web  
email  
phone

www.ra.ca  
info@rai.ca  
604-736-9466

E	REVISED AS PER CCGS COMMENTS	RDB	2018-04-10
D	REVISED AS PER CCGS COMMENTS	RDB	2018-04-06
C	CORRECTIONS TO RX SEC "B-B" (P.6)	RDB	2018-01-15
B	ADDITIONAL DWGS	RDB	2018-01-12
A	PRELIMINARY	RDB	2017-12-22
rev	description	by pdr	date

Asset - Actif

CCGS HENRY LARSEN

INSTALLATION OF A  
MULTI-BEAM SOUNDER

Drawing - Dessin

Rx TRANSDUCER HOUSING

designed - conception

RDB 2017-12-13

drawn - dessiné

RDB 2017-12-13

checked - vérifié

----

approved - approuvé

----

CCG ref. no. - no. réf. GCC

REF NO / PROJ NO / FILE NO

21260

scale - échelle

1:6

sheet-feuille

07/10

File / Fichier: 217-049 21260RE RX AND TXTRANSDUCER HOUSING.DWG - Printed / Imprimé: 2018/04/10 10:38

ANSI B

21260

The copyright of this drawing and of all annexes which are entrusted to a person's care always remain the property of Kongsberg Maritime AS. They must not be copied or duplicated nor shown to or placed at the disposal of third persons without our written consent.

21260

A

B

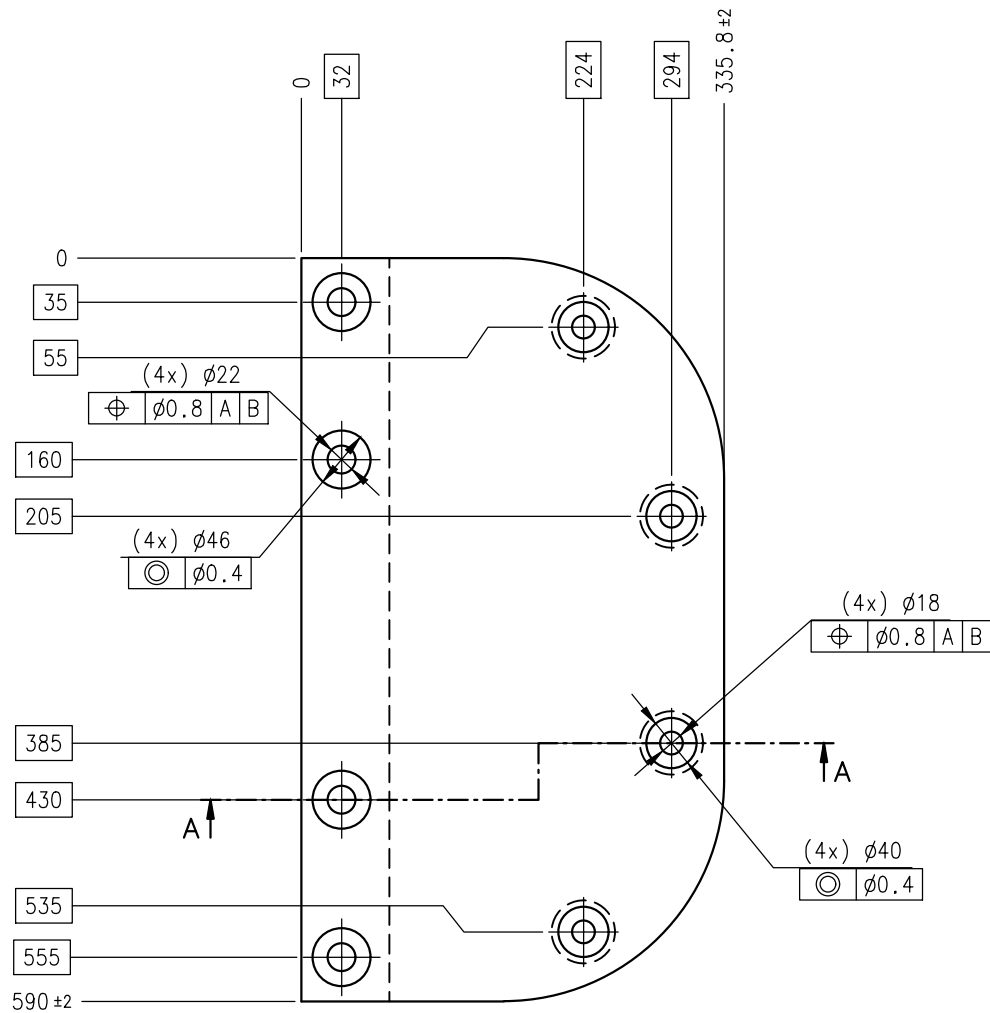
C

CAD PRODUCED DRAWING  
PRODUIT PAR DAO

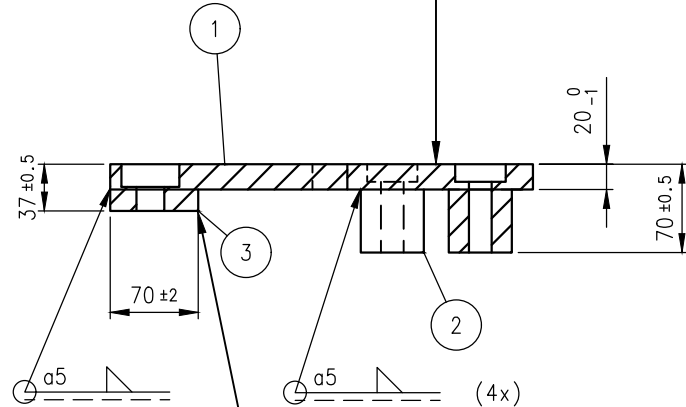
0 1  
inches

3 4  
pouces

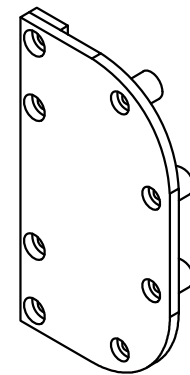
REPORT ANY ERRORS OR OMISSIONS TO ILS MANAGER  
SIGNALER LES ERREURS OU LES OMISSIONS AU GESTIONNAIRE SLI



THIS PART IS MADE FROM 7/8"  
(22.225mm) PLATE.  
MACHINING IS REQUIRED TO  
OBTAIN THICKNESS INDICATED.



THIS PART IS MADE FROM 7/8"  
(22.225mm) PLATE.  
MACHINING IS REQUIRED.



ISOMETRIC  
SCALE 1:10

- Surface treatment:  
1. Sandblast to Sa 2.5  
2. 1 Coat iron oxide primer ~50 micron (approved shop primer before welding)  
3. Final paint, same system as used on ships hull.

Weight 35 kg

ITEM	Q'TY	DESCRIPTION	QUALITY	DIMENSION
3	1	Steel plate	<del>S235J0</del> EH36	590x70x <del>20mm</del> 22.225mm(7/8")
2	4	Steel bolt	S235J0	∅50x50 mm
1	1	steel plate	<del>S235J0</del> EH36	590x335.8x <del>20mm</del> 22.225mm(7/8")

MATERIAL: Steel, S235J0 SURFACE TREATMENT: See drawing			UNLESS OTHERWISE STATED, TOLERANCES: DIM.: ISO2768-mK THREADS: 6g/6H SURFACE: -		PROJ. METHODE
END PLATE B ICE WINDOW RX EM302			SCALE 1:5 ALTERNATIVE SCALE 1:10	Kongsberg Maritime AS	
ORIGIN DATE 2010.12.01			CLASS. CODE 599	ITEM ID 353860	REV. A
DESIGNED ES	APPROVED HF	SIZE A3	SHEET 1 OF 1	REV. DATE. 2010.12.01	

Fisheries and Oceans  
Canada  
Canadian  
Coast Guard

Pêches et Océans  
Canada  
Garde côtière  
Canadienne

**ROBERT ALLAN LTD.**  
NAVAL ARCHITECTS AND MARINE ENGINEERS  
230-1639 West 2nd Avenue  
Vancouver, B.C. V6J 1H3  
Canada

web  
email  
phone

www.rai.ca  
info@rai.ca  
604-736-9466

E	REVISED AS PER CCGS COMMENTS	RDB	2018-04-10
D	REVISED AS PER CCGS COMMENTS	RDB	2018-04-06
C	CORRECTIONS TO RX SEC "B-B" (P.6)	RDB	2018-01-15
B	ADDITIONAL DWGS	RDB	2018-01-12
A	PRELIMINARY	RDB	2017-12-22
rev	description	by par	date

Asset - Actif

CCGS HENRY LARSEN

INSTALLATION OF A  
MULTI-BEAM SOUNDER

Drawing - Dessin

Rx TRANSDUCER HOUSING

designed - conception	date
RDB	2017-12-13
drawn - dessiné	date
RDB	2017-12-13
checked - vérifié	date
----	----
approved - approuvé	date
----	----
CCG ref. no. - no. réf. GCC	scale - échelle
REF NO / PROJ NO / FILE NO	1:6
drawing no. - no. dessin	sheet-feuille
21260	08/10
	rev
	E

File / Fichier: 217-049 21260RE RX AND TXTRANSDUCER HOUSING.DWG - Printed / Imprimé: 2018/04/10 10:38

ANSI B

21260



C

B

A

21260

The copyright of this drawing and of all annexes which are entrusted to a person's care always remain the property of Kongsberg Maritime AS. They must not be copied or duplicated nor shown to or placed at the disposal of third persons without our written consent.

CAD PRODUCED DRAWING  
PRODUIT PAR DAO

0 1  
inches

3 4  
pouces

REPORT ANY ERRORS OR OMISSIONS TO ILS MANAGER  
SIGNALER LES ERREURS OU LES OMISSIONS AU GESTIONNAIRE SLI

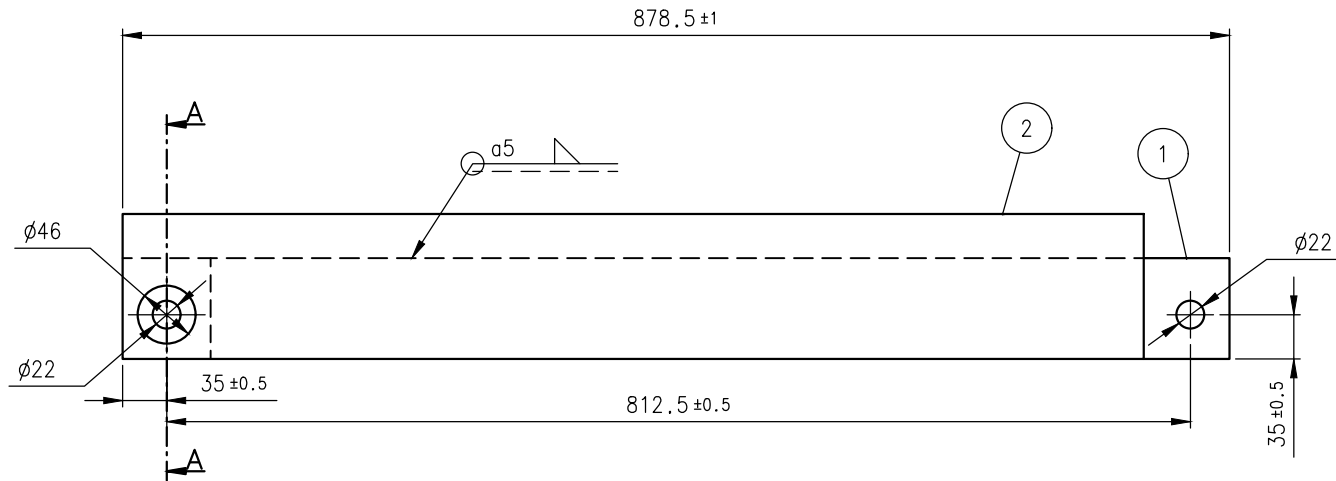
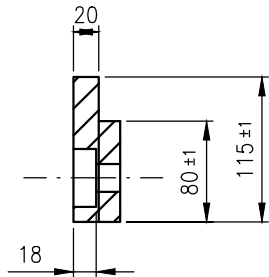


Fisheries and Oceans  
Canada  
Canadian  
Coast Guard

Pêches et Océans  
Canada  
Garde côtière  
Canadienne



**ROBERT ALLAN LTD.**  
NAVAL ARCHITECTS AND MARINE ENGINEERS  
230-1639 West 2nd Avenue  
Vancouver, B.C. V6J 1H3  
Canada  
web: www.rai.ca  
email: info@rai.ca  
phone: 604-736-9466

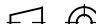



THIS PART IS MADE FROM 7/8"  
(22.225mm) PLATE.  
MACHINING IS REQUIRED.

Surface treatment:  
1. Sandblast to Sa 2.5  
2. 1 coat iron oxide primer approx. 50 micron (approved shop primer before welding)  
3. Final paint, same as used on ships hull

Weight 40 kg

ITEM	Q'TY	DESCRIPTION	QUALITY	DIMENSION
2	1	Steel bar	<del>S235J0</del> EH36	115 x <del>20</del> 22.225mm(7/8") x 810.5 mm
1	1	Steel bar	<del>S235J0</del> EH36	80 x <del>50</del> 50.8mm(2") x 878.5 mm

MATERIAL: S235J0			UNLESS OTHERWISE STATED, TOLERANCES:			PROJ. METHODE	
SURFACE TREATMENT: See drawing			D.I.M.: ISO2768-mK		THREADS: 6g/6H	SURFACE: -	
SIDE COVER A  ICE WINDOW  RX  EM302			SCALE  1:5  ALTERNATIVE SCALE  —		 <b>KONGSBERG</b>		
			CLASS. CODE  599				
			ITEM ID  354393		REV.  Pro01		
ORIGIN DATE 2010.12.20	DESIGNED ES	APPROVED HF	SIZE A3	SHEET 1 OF 1	REV. DATE. 2010.12.20		

E	REVISED AS PER CCGS COMMENTS	RDB	2018-04-10
D	REVISED AS PER CCGS COMMENTS	RDB	2018-04-06
C	CORRECTIONS TO RX SEC "B-B" (P.6)	RDB	2018-01-15
B	ADDITIONAL DWGS	RDB	2018-01-12
A	PRELIMINARY	RDB	2017-12-22
rev	description	by pär	date

Asset - Actif	
CCGS HENRY LARSEN	
INSTALLATION OF A MULTI-BEAM SOUNDER	
Drawing - Dessin	
Rx TRANSDUCER HOUSING	

designed - conception	date
RDB	2017-12-13
drawn - dessiné	date
RDB	2017-12-13
checked - vérifié	date
----	----
approved - approuvé	date
----	----
CCG ref. no. - no. réf. GCC	scale - échelle
REF NO / PROJ NO / FILE NO	1:6
drawing no. - no. dessin	sheet-feuille
21260	09/10
	rev
	E

File / Fichier: 217-049 21260RE RX AND TXTRANSDUCER HOUSING.DWG - Printed / Imprimé: 2018/04/10 10:38

ANSI B

21260

The copyright of this drawing and of all annexes which are entrusted to a person's care always remain the property of Kongsberg Maritime AS. They must not be copied or duplicated nor shown to or placed at the disposal of third persons without our written consent.

21260

A

B

C

CAD PRODUCED DRAWING  
PRODUIT PAR DAO

0 1  
inches

3 4  
pouces

REPORT ANY ERRORS OR OMISSIONS TO ILS MANAGER  
SIGNALER LES ERREURS OU LES OMISSIONS AU GESTIONNAIRE SLI

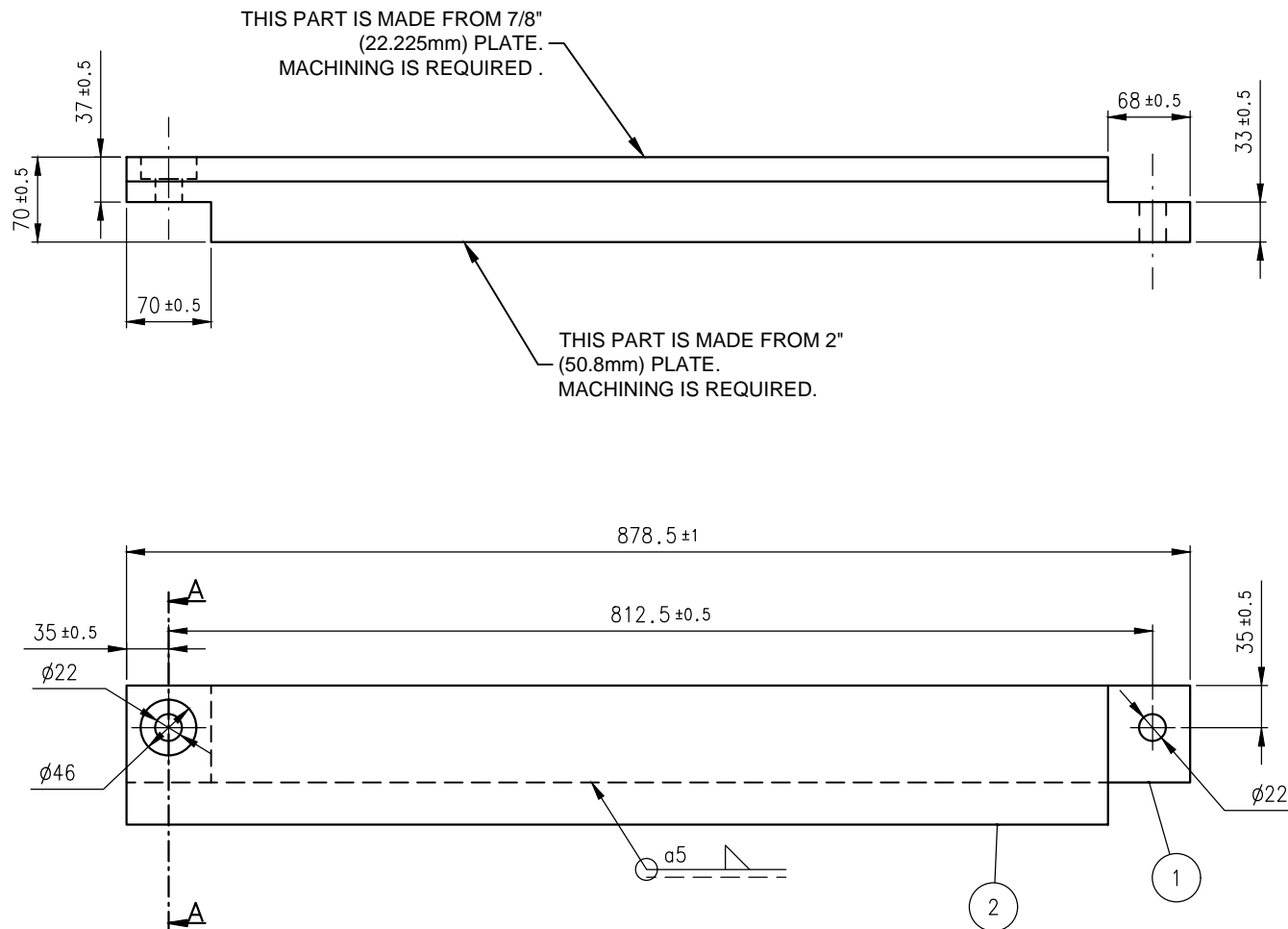
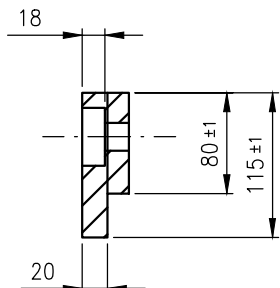


Fisheries and Oceans  
Canada  
Canadian  
Coast Guard

Pêches et Océans  
Canada  
Garde côtière  
Canadienne



**ROBERT ALLAN LTD.**  
NAVAL ARCHITECTS AND MARINE ENGINEERS  
230-1639 West 2nd Avenue  
Vancouver, B.C. V6J 1H3  
Canada  
web: www.ra.ca  
email: info@rai.ca  
phone: 604-736-9466



Surface treatment:  
1. Sandblast to Sa 2.5  
2. 1 coat iron oxide primer approx. 50 micron (approved shop primer before welding)  
3. Final paint, same as used on ships hull

Weight 40 kg

ITEM	Q'TY	DESCRIPTION	QUALITY	DIMENSION
2	1	Steel bar	<del>S235J0</del> EH36	115 x <del>20</del> 22.225mm(7/8") x 810.5 mm
1	1	Steel bar	<del>S235J0</del> EH36	80 x <del>50</del> 50.8mm(2") x 878.5 mm

MATERIAL: S235J0 SURFACE TREATMENT: See drawing			UNLESS OTHERWISE STATED, TOLERANCES: DIM.: ISO2768-mK THREADS: 6g/6H SURFACE: -			PROJ. METHODE	
SIDE COVER B ICE WINDOW RX EM2040			SCALE 1:5 ALTERNATIVE SCALE -				
			CLASS. CODE 599	ITEM ID 354395		REV. Pro01	
ORIGIN DATE 2010.12.20	DESIGNED ES	APPROVED HF	SIZE A3	SHEET 1 OF 1	REV. DATE. 2010.12.20		

E	REVISED AS PER CCGS COMMENTS	RDB	2018-04-10
D	REVISED AS PER CCGS COMMENTS	RDB	2018-04-06
C	CORRECTIONS TO RX SEC "B-B" (P.6)	RDB	2018-01-15
B	ADDITIONAL DWGS	RDB	2018-01-12
A	PRELIMINARY	RDB	2017-12-22
rev	description	by par	date

Asset - Actif  
**CCGS HENRY LARSEN**  
INSTALLATION OF A  
MULTI-BEAM SOUNDER

Drawing - Dessin  
**Rx TRANSDUCER HOUSING**

designed - conception	date
RDB	2017-12-13
drawn - dessiné	date
RDB	2017-12-13
checked - vérifié	date
----	----
approved - approuvé	date
----	----
CCG ref. no. - no. réf. GCC	scale - échelle
REF NO / PROJ NO / FILE NO	1:6
drawing no. - no. dessin	sheet-feuille
21260	10/10
	rev
	E

File / Fichier: 217-049 21260RE RX AND TXTRANSDUCER HOUSING.DWG - Printed / Imprimé: 2018/04/10 10:38

ANSI B

21260