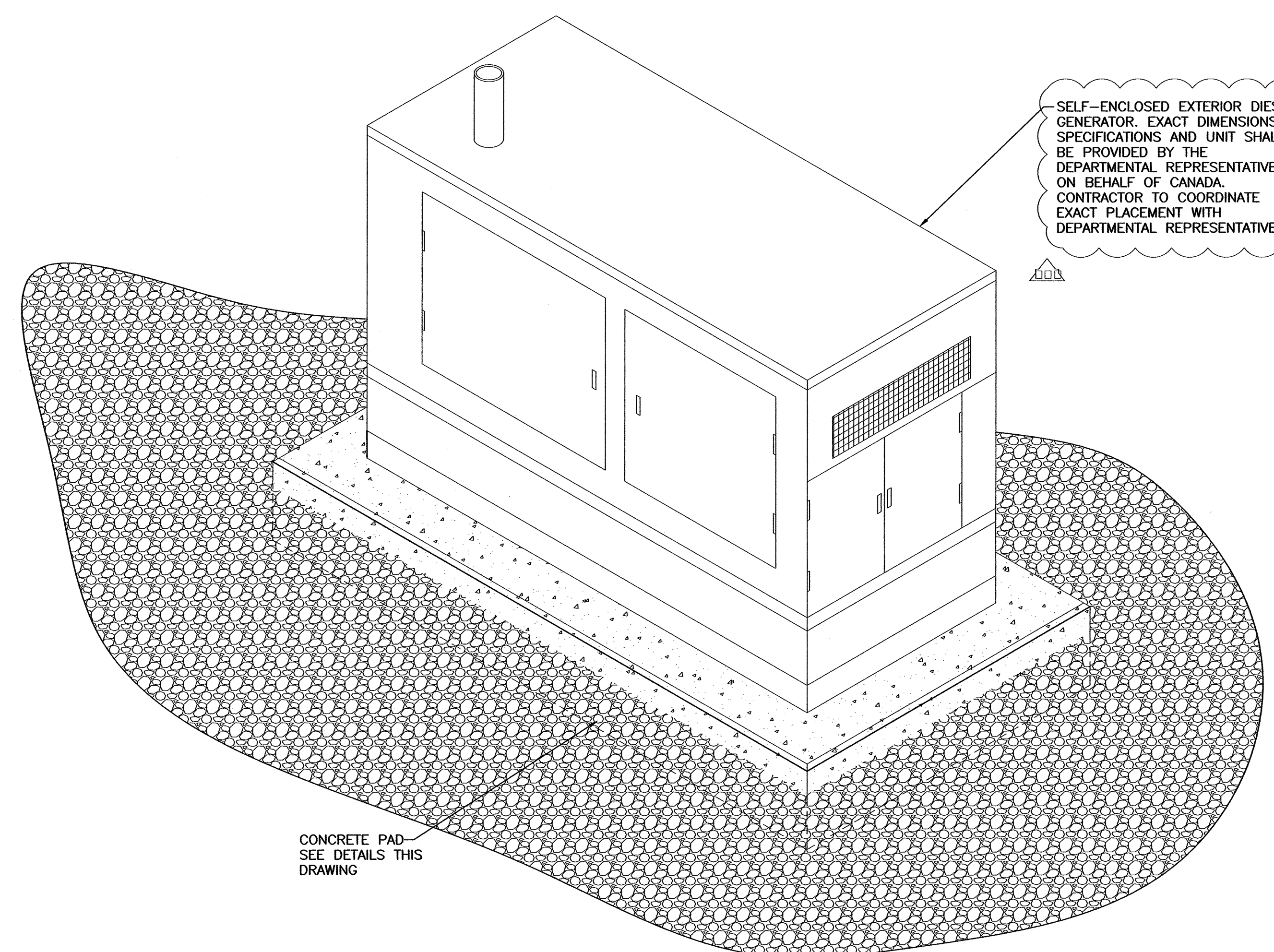
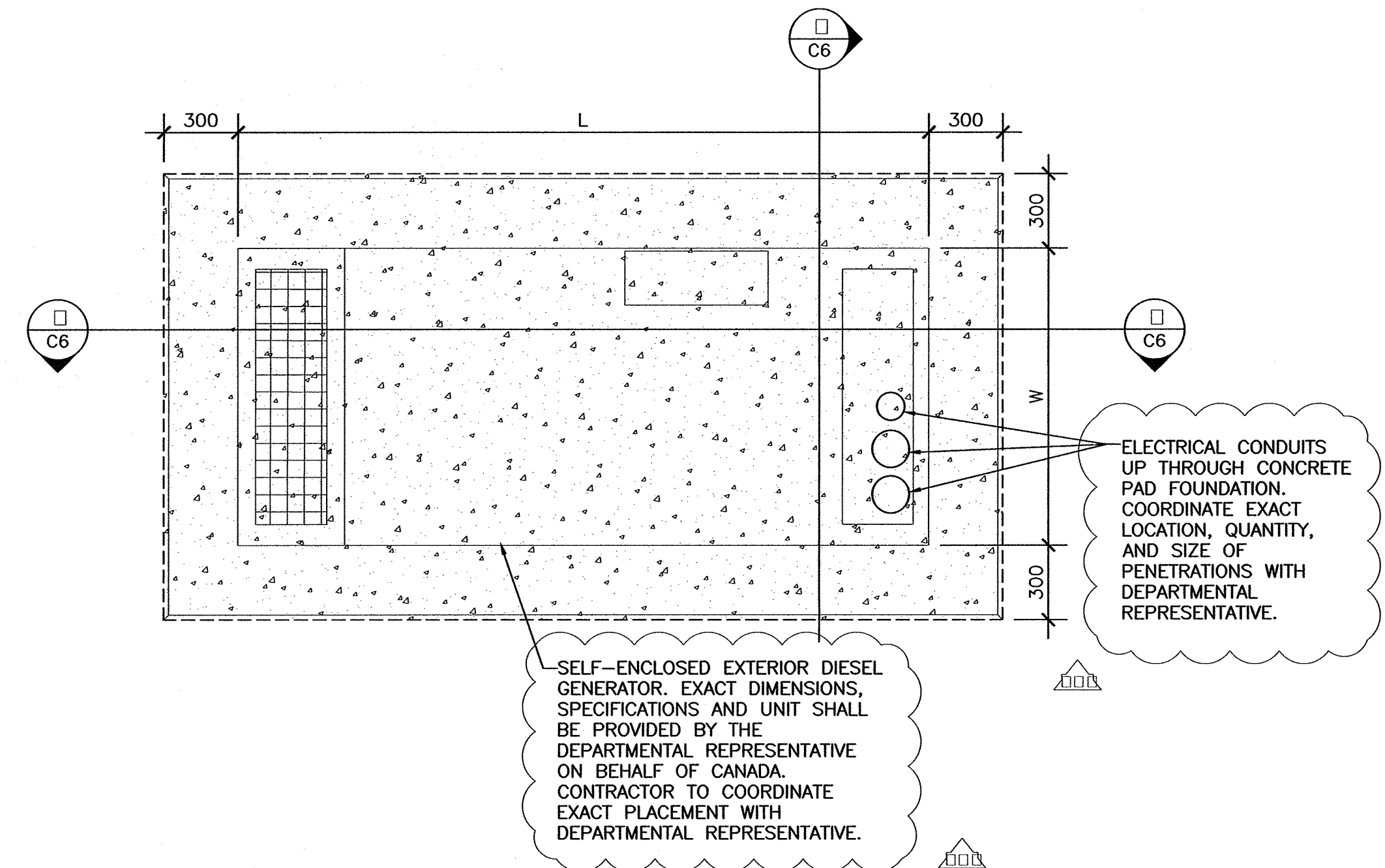


NOTES:

1. GENERATOR WILL BE SUPPLIED IN FULL BY CANADA. CONTRACTOR TO COORDINATE SIZE AND PLACEMENT OF PAD FOUNDATION AND NECESSARY PENETRATIONS WITH DEPARTMENTAL REPRESENTATIVE.
2. ANCHOR EQUIPMENT TO CONCRETE IN ACCORDANCE WITH MANUFACTURER'S WRITTEN INSTRUCTIONS.
3. CONCRETE CLEAR COVER:
 1. TOP / SIDES : 60mm
 2. BOTTOM : 75mm
4. NO EQUIPMENT SHALL BE PLACED UNTIL CONCRETE TEST RESULTS INDICATE NO LESS THAN 70% OF SPECIFIED COMPRESSIVE STRENGTH
5. COORDINATE SIZE OF PAD FOUNDATION AND LOCATION OF NECESSARY PENETRATIONS WITH DEPARTMENTAL REPRESENTATIVE. GENERATOR TO BE SUPPLIED BY CANADA AND INSTALLED BY THE CONTRACTOR.
6. ALL ELEVATIONS ARE IN METERS
7. ALL DIMENSIONS ARE IN MILLIMETERS.



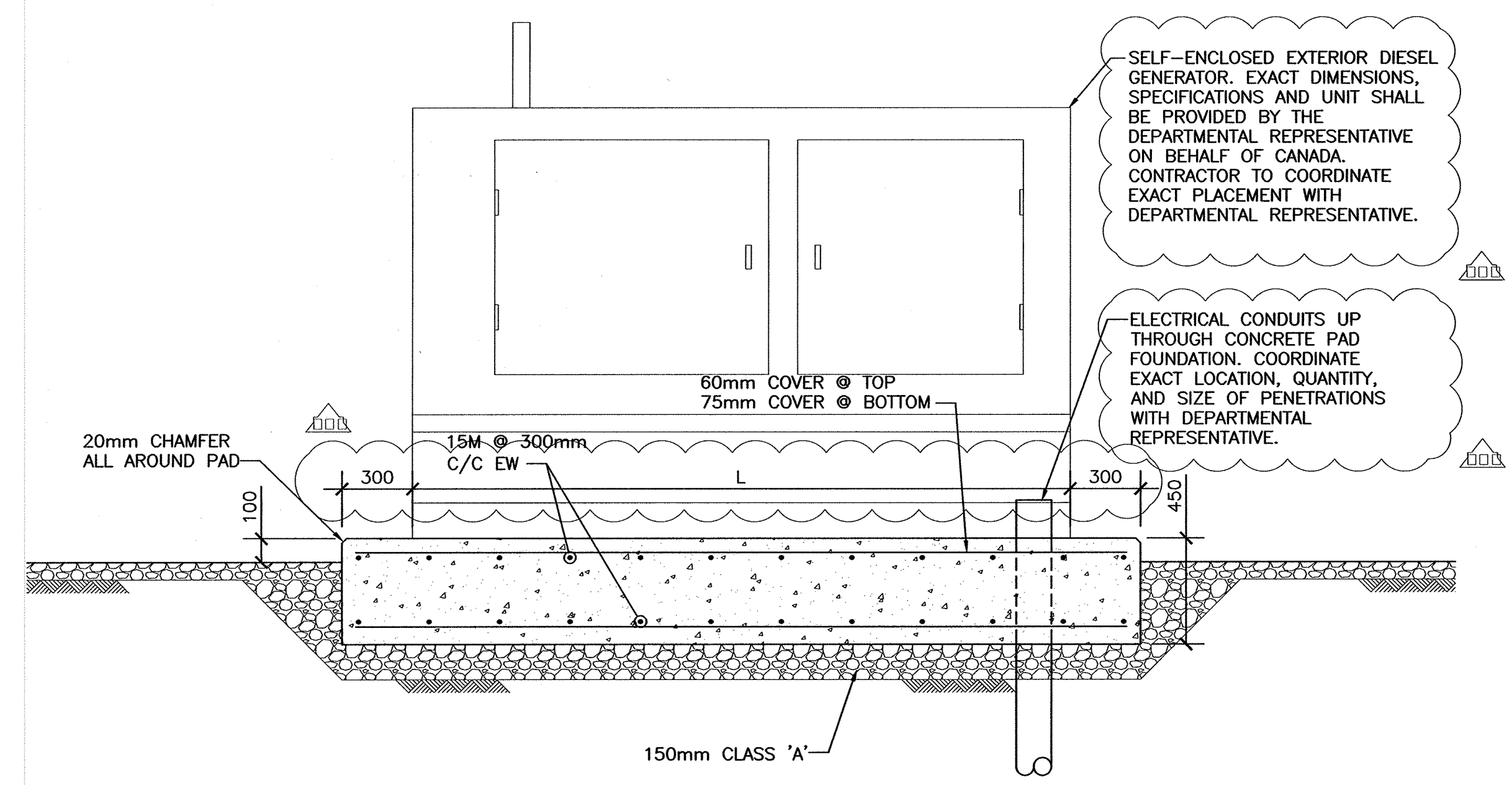
SELF-ENCLOSED EXTERIOR DIESEL GENERATOR CONCRETE PAD DETAIL - PLAN

SCALE : 1:20

3
C6

SELF-ENCLOSED EXTERIOR DIESEL GENERATOR CONCRETE PAD DETAIL - ISOMETRIC

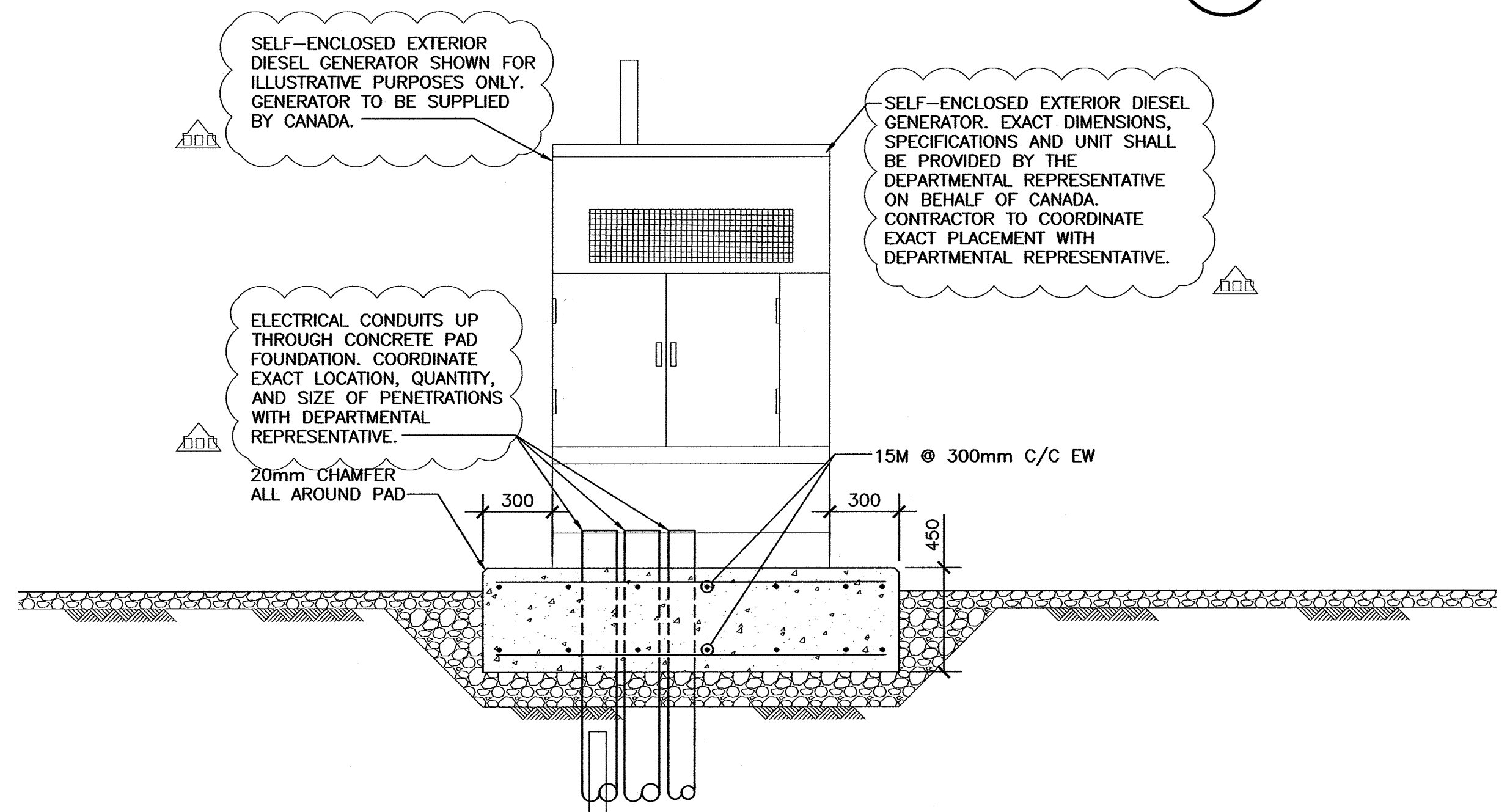
4
C6



SELF-ENCLOSED EXTERIOR DIESEL GENERATOR CONCRETE PAD DETAIL - SECTION

SCALE : 1:20

2
C6



SELF-ENCLOSED EXTERIOR DIESEL GENERATOR CONCRETE PAD DETAIL - SECTION

SCALE : 1:20

1
C6

CO2	ISSUED FOR ADDENDUM #1	APR 30 2018
CO1	ISSUED FOR TENDER	MAR 28 2018
revisions		date
project		project

ST. ANTHONY SAR STATION REFURBISHMENT PHASE II SAR READY BUILDING & FLOATING DOCK

DIESEL GENERATOR CONCRETE PAD DETAILS

designed	KB	conçu
date	2018-03-28	
drawn	TS	dessiné
date	2018-03-28	
approved	MK	approuvé
date	2018-03-28	
Tender DB		Submission
PWGSC Project Manager		Administrateur de projets TPSGC
project number		no. du projet
	R.089934.001	
drawing no.		no. du dessin
	C6 - REV	