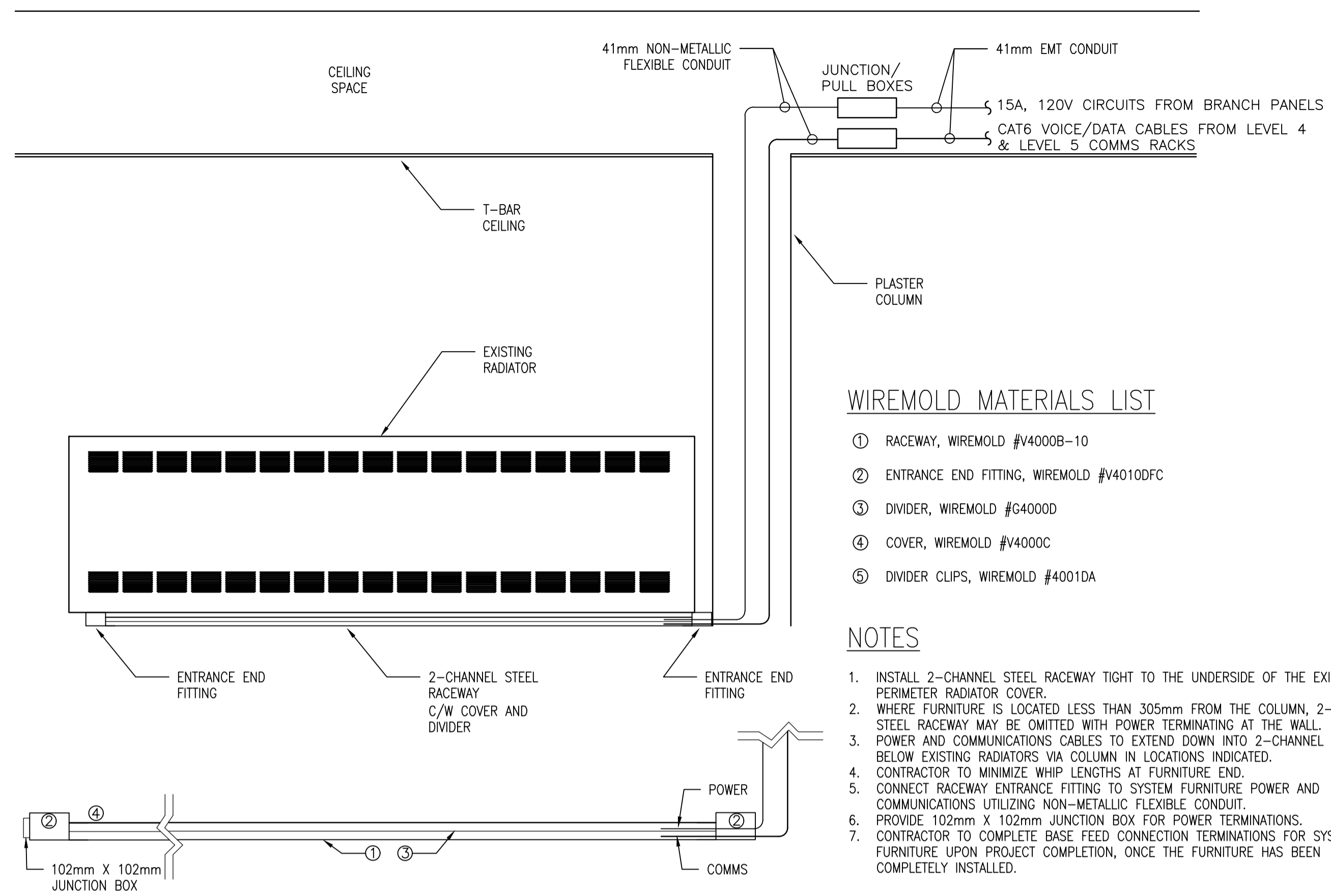


**ELECTRICAL LEGEND**

- EXISTING 600mm X 1200mm, FLUORESCENT, 24 CELL PARABOLIC TROFFER
- EXISTING 300mm X 1200mm, FLUORESCENT, 16 CELL PARABOLIC TROFFER
- EXISTING 600mm X 600mm, FLUORESCENT, 12 CELL PARABOLIC TROFFER
- LED UNDER-CABINET FIXTURE, 4000K, PHILIPS eW PROFILE POWERCORE: 997mm, ITEM No. 523-00027-77, 489mm, 523-00027-76 C/W PERMANENT WIRING COMPARTMENT & TERMINATOR, 120-00065-00 AND END TO END CONNECTOR 108-00035-10
- RECESSED POT LIGHT FIXTURE, PHILIPS LIGHTOLIER CALCULITE LED C6RN, C6L35883WZ10U, C6RDLWH
- 120V SINGLE GANG DIMMER SWITCH
- 120V TWO GANG DIMMER SWITCH
- EXISTING TRACK LIGHTING
- EXISTING LOW VOLTAGE SWITCHES: TWO GANG, FOUR SWITCH, TWO CIRCUIT AND TWO GANG, TWO SWITCH, TWO CIRCUIT RESPECTIVELY, WHERE 'D-6' INDICATES FED FROM CIRCUIT 6 IN PANEL 'D'
- EXISTING ON/OFF PUSH BUTTON SWITCH
- EXISTING 347V TWO GANG DIMMER SWITCH
- CEILING MOUNTED OCCUPANCY SENSOR (MATCH EXISTING)
- EXISTING DISTRIBUTION PANEL, SURFACE MOUNTED
- 15A, 125V, PARALLEL BLADE, U-GROUND, DUPLEX RECEPTACLE (5-15R)
- 15A, 125V, PARALLEL BLADE, U-GROUND, DUPLEX RECEPTACLE, MOUNTED @ COUNTER HEIGHT, WHERE 'GF' INDICATES C/W GROUND FAULT CIRCUIT INTERRUPTION
- COMMUNICATION (VOICE/DATA) OUTLET, C/W TWO CATEGORY 6 RJ45 JACKS, TWO CAT 6 FT6 RATED CABLES WIRED FROM CAT 6 PATCH PANEL IN COMM/PHONE ROOMS TO JACKS IN WALL
- MULTI-MEDIA OUTLET C/W AUDIO, VGA AND HDMI RECEPTACLES
- ELECTRICAL CONDUIT (SIZED AS INDICATED)
- EXISTING PA SPEAKER
- EXISTING FIRE ALARM STROBE
- EXISTING FIRE ALARM MANUAL PULL STATION
- UV AIR PURIFIER MANUAL STARTER W/ THERMAL OVERLOAD PROTECTION AND PILOT LIGHT
- 120V SINGLE PHASE MOTOR
- 120V, SINGLE PHASE DIRECT SYSTEMS FURNITURE POWER CONNECTION, REFER TO DETAIL 1/E-1
- SYSTEMS FURNITURE COMMUNICATIONS CONNECTION, REFER TO DETAIL 1/E-1
- EXISTING PACK POLE SUPPLYING DESK FURNITURE
- ELECTRICAL JUNCTION BOX LOCATED IN CEILING SPACE
- CONDUIT STUB DOWN
- CONDUIT STUB UP
- FLUSH MOUNTED POKE THROUGH FLOOR BOX, COMPLETE WITH TWO(2) 15 AMP, 5-15R DUPLEX RECEPTACLES, FIVE(5) CAT 6 JACKS (4-DATA & 1-VOICE), TWO(2) HDMI, TWO(2) VGA AND TWO(2) AUDIO MEDIA OUTLETS
- EXISTING EMERGENCY LIGHTING DUAL REMOTE HEADS
- EXISTING EMERGENCY LIGHTING BATTERY PACK
- EXISTING CEILING MOUNTED EXIT SIGN

**ELECTRICAL DESCRIPTORS LEGEND**

- 'E' EXISTING DEVICE/LUMINAIRE TO REMAIN
- 'M' DEVICE/LUMINAIRE TO BE MOVED
- 'RM' DEVICE/LUMINAIRE TO BE REMOVED AND RETURNED TO OWNER
- 'RL' DEVICE/LUMINAIRE, RELOCATED
- 'N' NEW DEVICE/LUMINAIRE TO BE PROVIDED BY ELECTRICAL CONTRACTOR



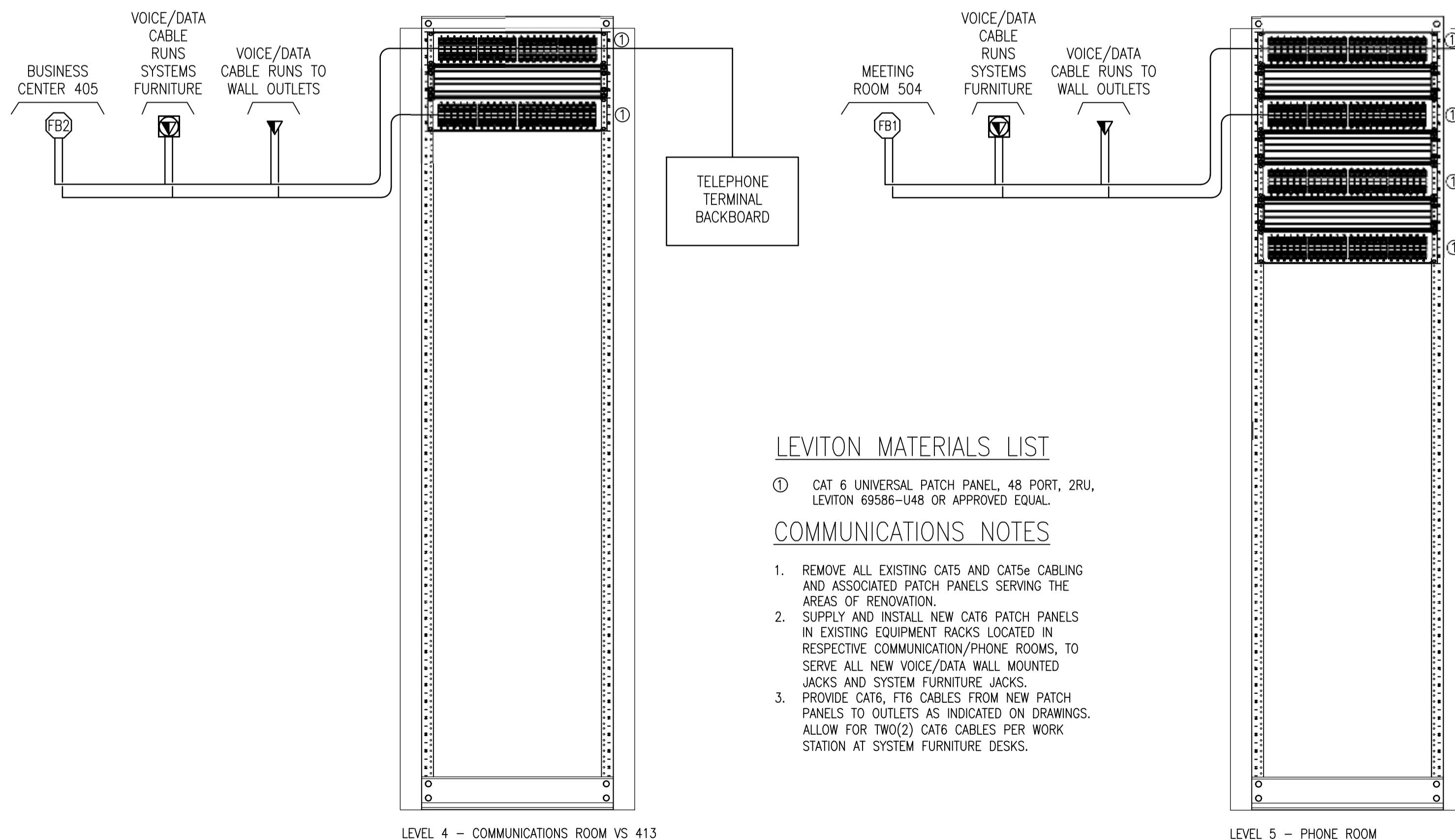
**WIREMOLD MATERIALS LIST**

- ① RACEWAY, WIREMOLD #V4000B-10
- ② ENTRANCE END FITTING, WIREMOLD #V4010DFC
- ③ DIVIDER, WIREMOLD #G4000D
- ④ COVER, WIREMOLD #V4000C
- ⑤ DIVIDER CLIPS, WIREMOLD #4001DA

**NOTES**

1. INSTALL 2-CHANNEL STEEL RACEWAY TIGHT TO THE UNDERSIDE OF THE EXISTING PERIMETER RADIATOR COVER.
2. WHERE FURNITURE IS LOCATED LESS THAN 305mm FROM THE COLUMN, 2-CHANNEL STEEL RACEWAY MAY BE OMITTED WITH POWER TERMINATING AT THE WALL.
3. POWER AND COMMUNICATIONS CABLES TO EXTEND DOWN INTO 2-CHANNEL RACEWAY BELOW EXISTING RADIATORS VIA COLUMN IN LOCATIONS INDICATED.
4. CONTRACTOR TO MINIMIZE WHIP LENGTHS AT FURNITURE END.
5. CONNECT RACEWAY ENTRANCE FITTING TO SYSTEM FURNITURE POWER AND COMMUNICATIONS UTILIZING NON-METALLIC FLEXIBLE CONDUIT.
6. PROVIDE 102mm X 102mm JUNCTION BOX FOR POWER TERMINATIONS.
7. CONTRACTOR TO COMPLETE BASE FEED CONNECTION TERMINATIONS FOR SYSTEMS FURNITURE UPON PROJECT COMPLETION, ONCE THE FURNITURE HAS BEEN COMPLETELY INSTALLED.

1 SYSTEMS FURNITURE POWER & COMMUNICATIONS DETAIL  
E-1 N.T.S.



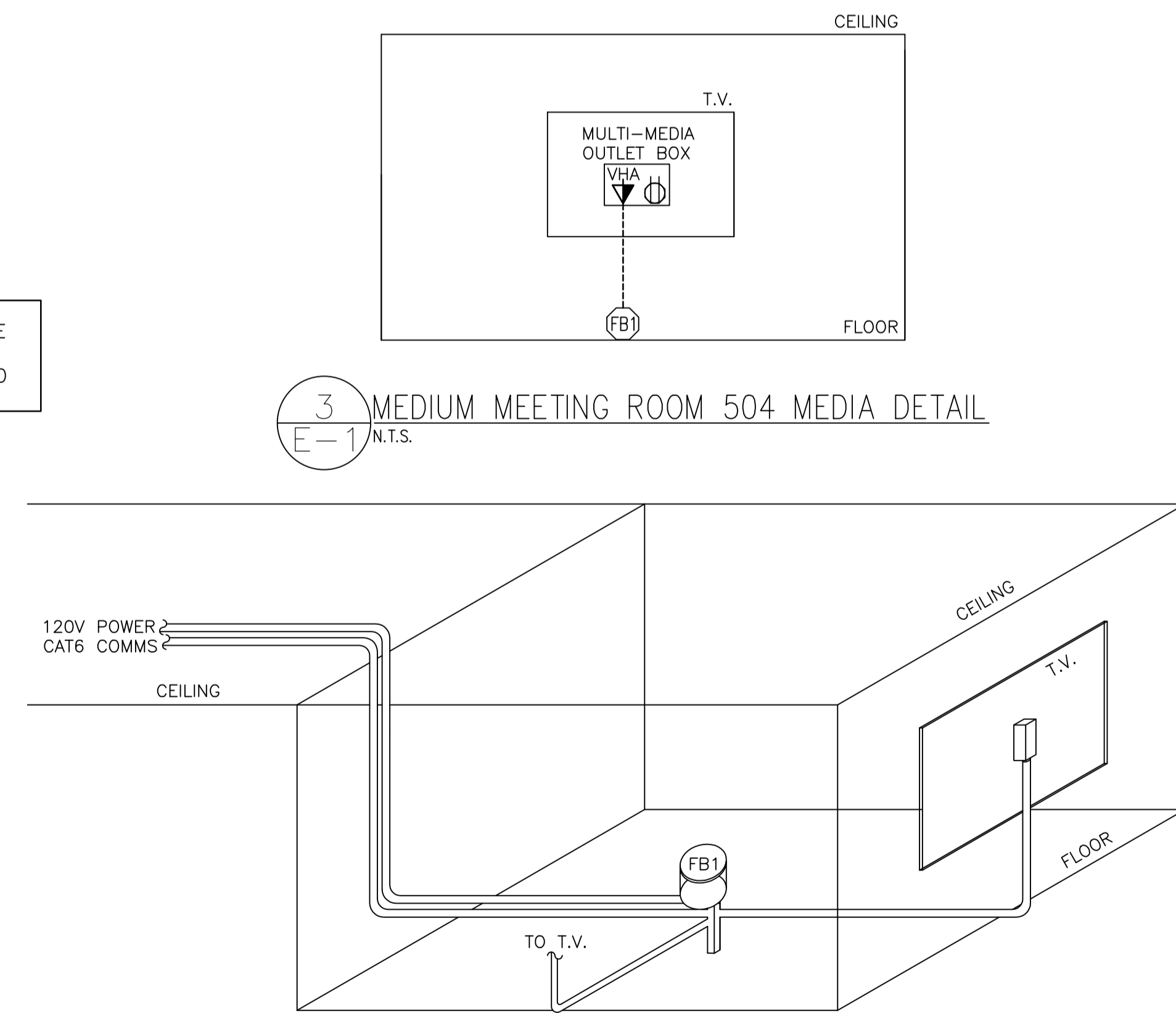
**LEVITON MATERIALS LIST**

- ① CAT 6 UNIVERSAL PATCH PANEL, 48 PORT, 2RU, LEVITON 69586-U48 OR APPROVED EQUAL.

**COMMUNICATIONS NOTES**

1. REMOVE ALL EXISTING CAT5 AND CAT5e CABLING AND ASSOCIATED PATCH PANELS SERVING THE AREAS OF RENOVATION.
2. SUPPLY AND INSTALL NEW CAT6 PATCH PANELS IN EXISTING EQUIPMENT RACKS LOCATED IN RESPECTIVE COMMUNICATION/PHONE ROOMS, TO SERVE ALL NEW VOICE/DATA WALL MOUNTED JACKS AND SYSTEM FURNITURE JACKS.
3. PROVIDE CAT6, FT6 CABLES FROM NEW PATCH PANELS TO OUTLETS AS INDICATED ON DRAWINGS. ALLOW FOR TWO(2) CAT6 CABLES PER WORK STATION AT SYSTEM FURNITURE DESKS.

2 COMMUNICATIONS DISTRIBUTION DETAIL  
E-1 N.T.S.

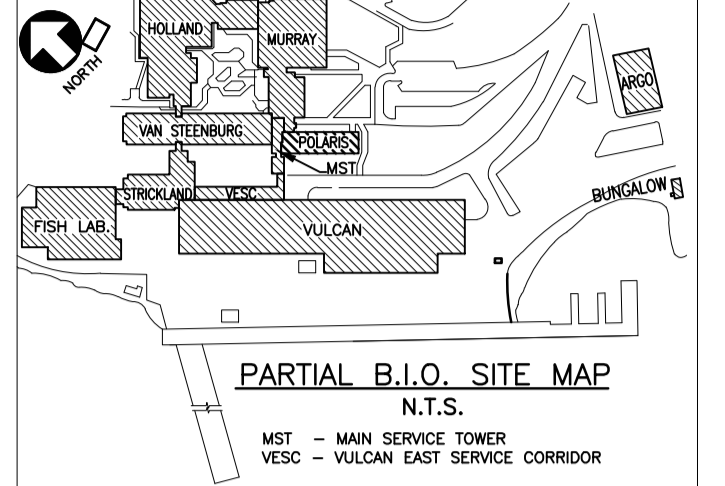


3 MEDIUM MEETING ROOM 504 MEDIA DETAIL  
E-1 N.T.S.

**NOTES**

1. CONTRACTOR TO INSTALL 1-HDMI, 1-VGA AND 1-AUDIO CABLE FROM POKE THROUGH FLOOR BOX TO EACH TV IN ROOM 504.
2. ROUTING OF CABLING IS DIAGRAMMATIC ONLY, CONTRACTOR SHALL ROUTE CABLING TO BEST SUIT SITE CONDITIONS.
3. CONTRACTOR SHALL COORDINATE APPROPRIATE TIMES TO ACCESS CEILINGS BELOW FLOOR BOX LOCATIONS IN ORDER TO ROUTE THE POWER AND COMMUNICATIONS CABLES AS REQUIRED.
4. PROVIDE RECESSED STYLE MULTI-MEDIA BOXES BEHIND TELEVISIONS FOR THE DUPLEX RECEPTACLE AND ASSOCIATED A/V CABLE OUTLETS.

4 MEDIUM MEETING ROOM 504 MEDIA DETAIL  
E-1 N.T.S.



consultant:

**trilogy**  
Interior Design Inc.

PO Box 321  
Bedford Row  
Halifax, Nova Scotia  
Canada B3J 2N7

tel: 902 835-9333  
fax: 902 835-9663

**emtech**  
CONSULTING ENGINEERS - LTD

118 Collier Avenue, Dartmouth, N.S. P1C 4B5, CANADA  
email: kevin@emtecheng.ca Tel: 902.255.3258



THESE DRAWINGS ARE TO BE USED SOLELY FOR THIS INTENDED PROJECT AND ARE NOT TO BE REPRODUCED OR USED FOR ANY OTHER PROJECT WITHOUT WRITTEN AUTHORIZATION DIRECTLY FROM TRILOGY INTERIOR DESIGN INC. ©TRILOGY INTERIOR DESIGN 2017

00	REVISED & ISSUED FOR TENDER	27NOV17
0	ISSUED FOR TENDER & CONST	07JUL17
revisions		date
project		projct

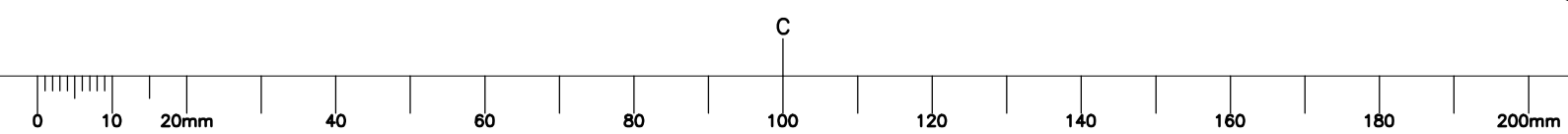
POLARIS BUILDING RENOVATIONS

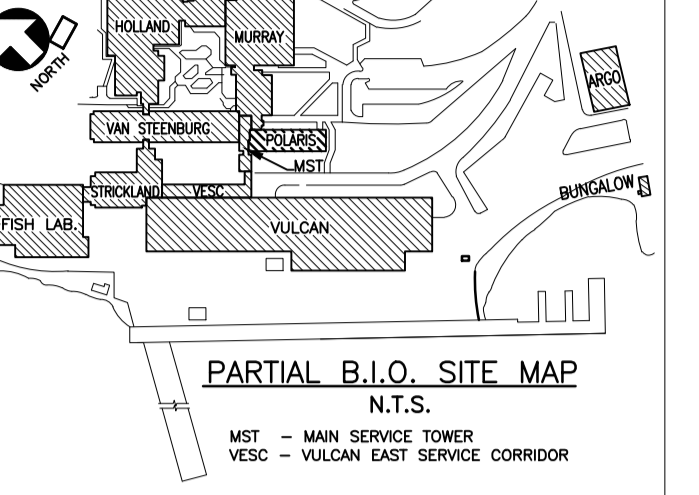
BEDFORD INSTITUTE OF OCEANOGRAPHY DARTMOUTH - NS

drawing dessein

**ELECTRICAL LEGEND & DETAILS**

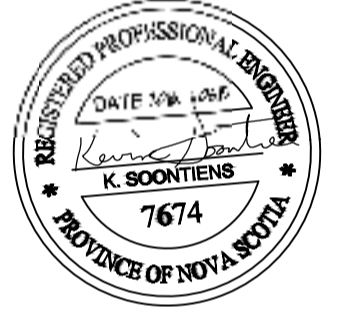
designed	KS	conçu
date	NOV 2017	
drawn	JT	dessiné
date	NOV 2017	
approved	KS	approuvé
date		
Tender	MICHAEL SHEN	Soumission
PWGSC Project Manager	Administrateur de projets TPSGC	
project number		no. du projet
	R.087416.001	
drawing no.		no. du dessin
	E-1	





consultant:  
**trilogy**  
 Interior Design Inc.  
 PO Box 321  
 Bedford Row  
 Halifax, Nova Scotia  
 Canada B3J 2N7  
 tel: 902 835-9333  
 fax: 902 835-9663

**emtech**  
 CONSULTING ENGINEERS UNITED  
 118 Collier Avenue, Dartmouth, N.S. PH: 902 403 3098  
 email: info@emtecheng.ca Cell: 902 553 3258



THESE DRAWINGS ARE TO BE USED SOLELY FOR THIS INTENDED PROJECT AND ARE NOT TO BE REPRODUCED OR USED FOR ANY OTHER PROJECT WITHOUT WRITTEN AUTHORIZATION DIRECTLY FROM TRILOGY INTERIOR DESIGN INC. ©TRILOGY INTERIOR DESIGN 2017

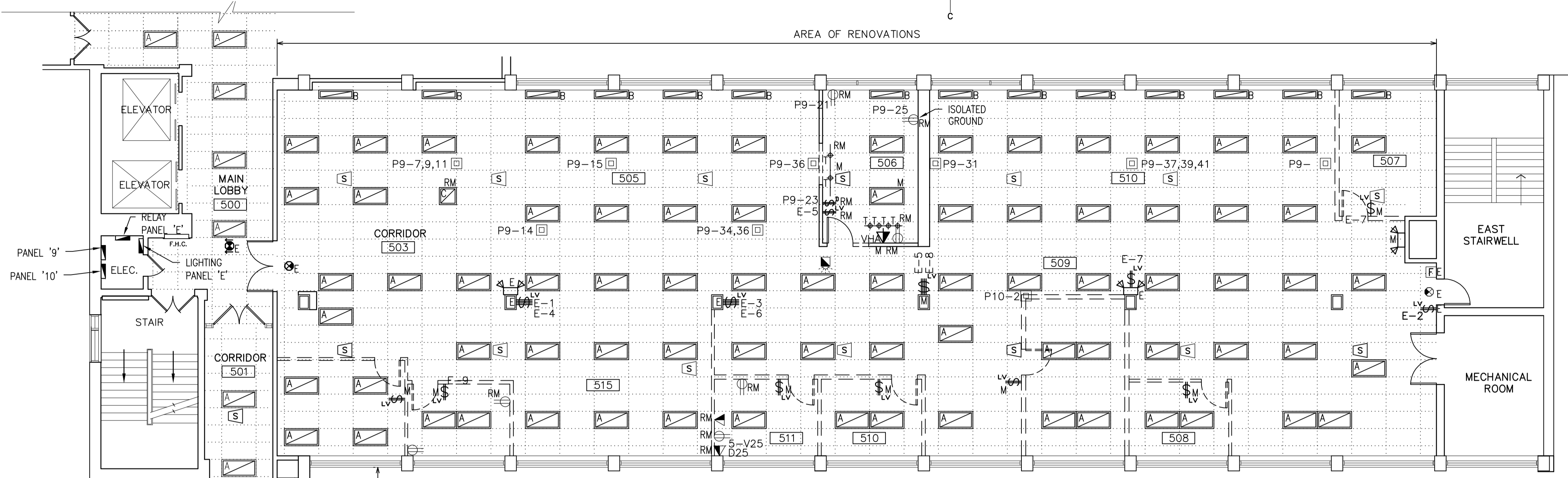
revisions	date	project
00	REVISED & ISSUED FOR TENDER	27NOV17
0	ISSUED FOR TENDER & CONST	07JUL17

project POLARIS BUILDING RENOVATIONS  
 BEDFORD INSTITUTE OF OCEANOGRAPHY DARTMOUTH - NS  
 drawing dessin

LEVELS 4 & 5 ELECTRICAL DEMOLITION PLANS

designed KS conçu  
 date NOV 2017  
 drawn JT dessiné  
 date NOV 2017  
 approved KS approuvé  
 date  
 Tender Soumission  
 MICHAEL SHEN  
 PWGSC Project Manager Administrateur de projets TPSGC  
 project number no. du projet  
 R.087416.001  
 drawing no. no. du dessin

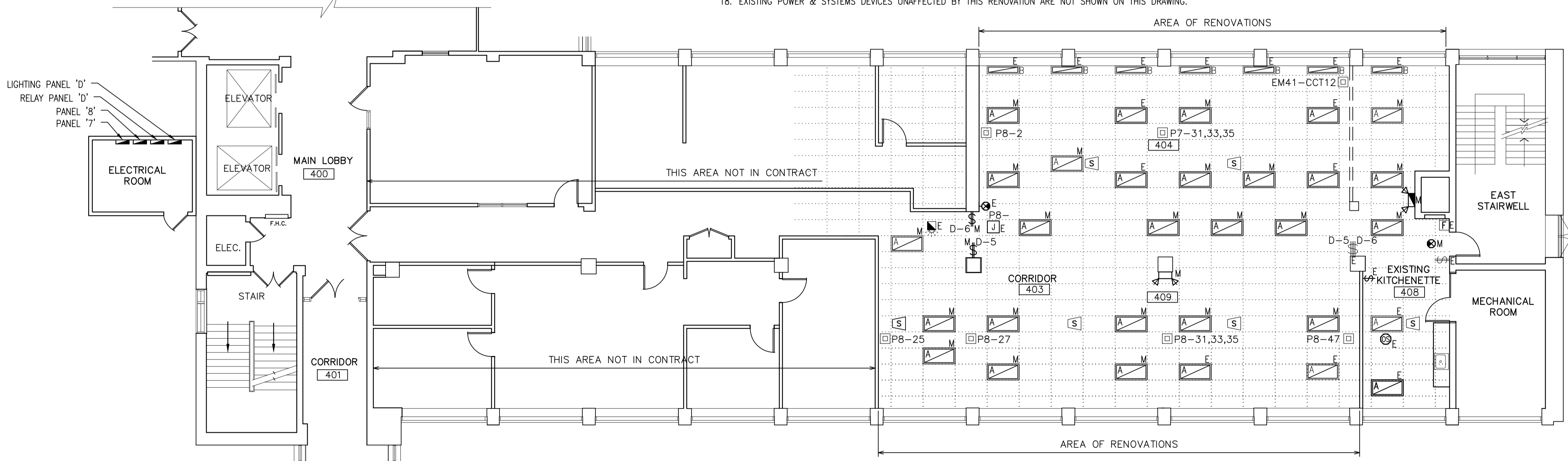
E-2



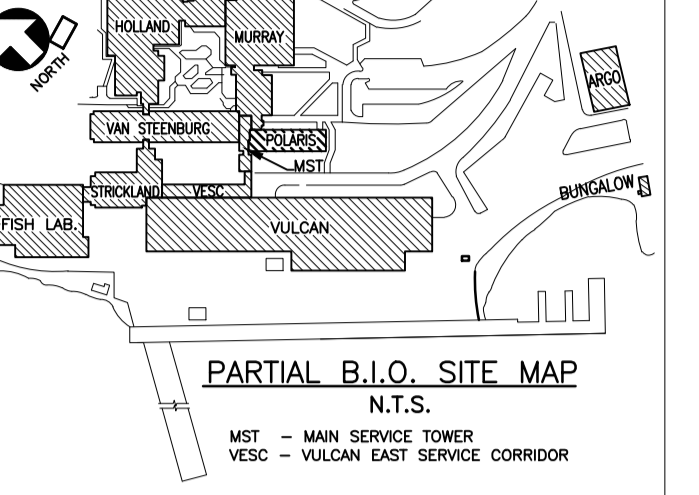
2 LEVEL FIVE - EXISTING ELECTRICAL/ DEMOLITION PLAN  
 E-2 N.T.S.

ELECTRICAL DEMOLITION NOTES

- RE-WORK EXISTING TYPE A LIGHT FIXTURES ON LEVEL 4 TO SUIT THE NEW LAYOUT AS PER DRAWING E-3. REFER TO ELECTRICAL DESCRIPTORS LEGEND ON DRAWING E-1.
- REMOVE AND SAFELY STORE, SO AS TO PROTECT FROM DAMAGE, EXISTING TYPE A FIXTURES ON LEVEL 5 FOR RE-USE.
- MAINTAIN LOW VOLTAGE SWITCHES FROM WALLS BEING DEMOLISHED FOR RE-USE IN NEW OFFICE SPACES. RE-USE NEAREST AVAILABLE LIGHTING RELAY CIRCUITS.
- RE-CIRCUIT LIGHTING CONTROL ZONES IN MAIN OFFICE AREA TO SUIT NEW LAYOUT ON DRAWING E-3 AS REQUIRED.
- REMOVE EXISTING LIGHTING CONTROL CIRCUITRY AND DEVICES MADE REDUNDANT AND UPDATE PANEL SCHEDULES AS REQUIRED.
- REMOVE EXISTING TRACK LIGHTING FROM ROOM 506 AND RETURN TO OWNER.
- EXISTING TELEVISIONS LOCATED IN ROOMS 506 AND 511 SHALL BE RELOCATED TO MEETING ROOM 504 IN LOCATIONS INDICATED ON DRAWING E-4. EXISTING MULTI-MEDIA, 'VHA' OUTLET IN ROOM 506 MAY BE RE-USED IF IN GOOD REPAIR.
- REMOVE EXISTING POWER AND DATA OUTLETS IN OFFICE WALLS BEING DEMOLISHED, COMPLETE WITH FEEDERS, BACK TO THE NEAREST JUNCTION BOX. MAINTAIN POWER CIRCUITS FOR RE-USE.
- REMOVE ALL EXISTING CAT 5 AND CAT 5e OUTLETS AND COMMUNICATIONS CABLES, WITHIN THE AREAS BEING RENOVATED, BACK TO PATCH PANELS IN COMMUNICATIONS/PHONE ROOMS ON LEVELS 4 & 5.
- REMOVE ALL EXISTING SYSTEMS FURNITURE WHIPS PRESENTLY EXITING FACE OF COLUMNS AND FIT BOXES WITH BLANK COVERS. REMOVE FEEDERS BACK TO NEAREST JUNCTION BOX AND MAINTAIN CIRCUITS FOR RE-USE.
- EXISTING PACK POLES SHOWN ON THIS DRAWING ARE FOR INDICATION OF EXISTING CIRCUITS IN AREAS UNDER RENOVATION. POLES WILL BE REMOVED PRIOR TO START OF THIS CONTRACT WITH CIRCUITS TERMINATING IN LOCAL JUNCTION BOXES WITHIN CEILING SPACE.
- RELOCATE EXISTING EMERGENCY BATTERY UNITS AND REMOTE HEADS AS REQUIRED TO SUIT NEW LAYOUT AS PER DRAWING E-4.
- RELOCATE EXISTING FIRE ALARM SPEAKERS IN CEILING SPACE TO SUIT NEW LAYOUT. REFER TO COORDINATION DRAWING E-5 FOR NEW LOCATIONS. PROVIDE FOR SYSTEM VERIFICATION UPON COMPLETION OF THE WORK.
- EXISTING SOUND MASKING EMITTERS SHALL REMAIN. CONTRACTOR SHALL TEMPORARILY SUPPORT TO ALLOW FOR T-BAR CEILING REPLACEMENT ON LEVEL 5. REFER TO COORDINATION DRAWING E-5 FOR LOCATIONS.
- CONTRACTOR TO SUPPORT, IN ACCORDANCE WITH CANADIAN ELECTRICAL CODE REQUIREMENTS, ALL EXISTING DEVICES WITHIN CEILING SPACE, INCLUDING: CABLES, LIGHT FIXTURES AND DEVICES NOT BEING REMOVED COMPLETELY OR MADE REDUNDANT BY THIS RENOVATION.
- EXISTING PANEL '7' AND PANEL '8' ARE CURRENTLY FEEDING LEVEL 4 POWER CIRCUITS. EXISTING PANEL 'D' AND ASSOCIATED RELAY PANEL ARE FEEDING LIGHTS IN LEVEL 4.
- EXISTING PANEL '9' AND PANEL '10' ARE CURRENTLY FEEDING LEVEL 5 POWER CIRCUITS. EXISTING PANEL 'E' AND ASSOCIATED RELAY PANEL ARE FEEDING LIGHTS IN LEVEL 5.
- EXISTING POWER & SYSTEMS DEVICES UNAFFECTED BY THIS RENOVATION ARE NOT SHOWN ON THIS DRAWING.

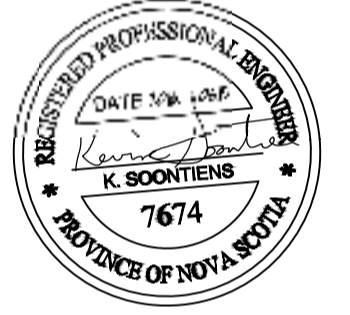


1 LEVEL FOUR - EXISTING ELECTRICAL/ DEMOLITION PLAN  
 E-2 N.T.S.



consultant:  
**trilogy**  
 Interior Design Inc.  
 PO Box 321  
 Bedford Row  
 Halifax, Nova Scotia  
 Canada B3J 2N7  
 tel: 902 835-9333  
 fax: 902 835-9663

**emtech**  
 CONSULTING ENGINEERS LIMITED  
 118 Collier Avenue, Dartmouth, N.S. PH: 902 403 3058  
 email: tech@emtech.ns.ca Cell: 902 553 3258



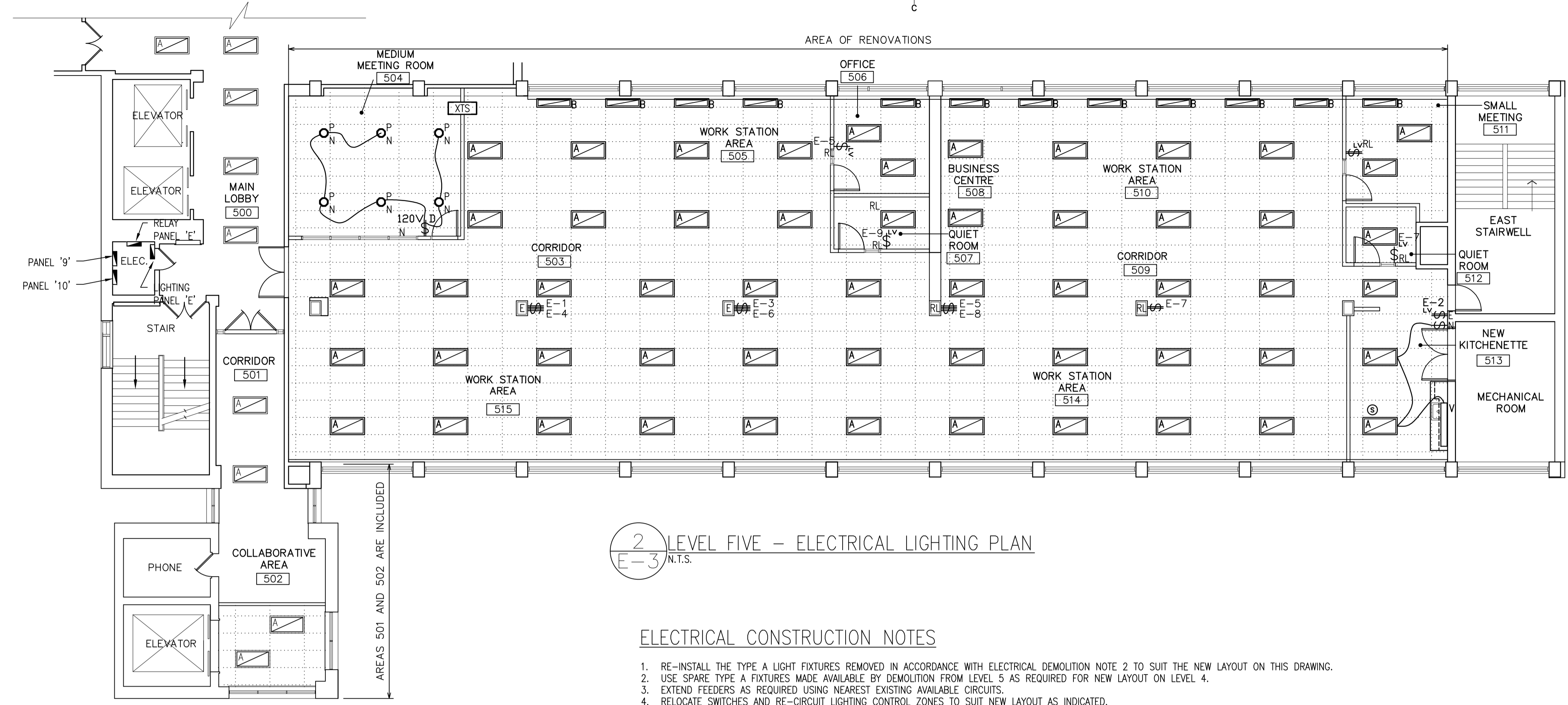
THESE DRAWINGS ARE TO BE USED SOLELY FOR THIS INTENDED PROJECT AND ARE NOT TO BE REPRODUCED OR USED FOR ANY OTHER PROJECT WITHOUT WRITTEN AUTHORIZATION DIRECTLY FROM TRILOGY INTERIOR DESIGN INC. ©TRILOGY INTERIOR DESIGN 2017

00	REVISED & ISSUED FOR TENDER	27NOV17
0	ISSUED FOR TENDER & CONST	07JUL17

revisions: 00, 0  
 project: POLARIS BUILDING RENOVATIONS  
 BEDFORD INSTITUTE OF OCEANOGRAPHY DARTMOUTH - NS

LEVELS 4 & 5 ELECTRICAL LIGHTING PLANS

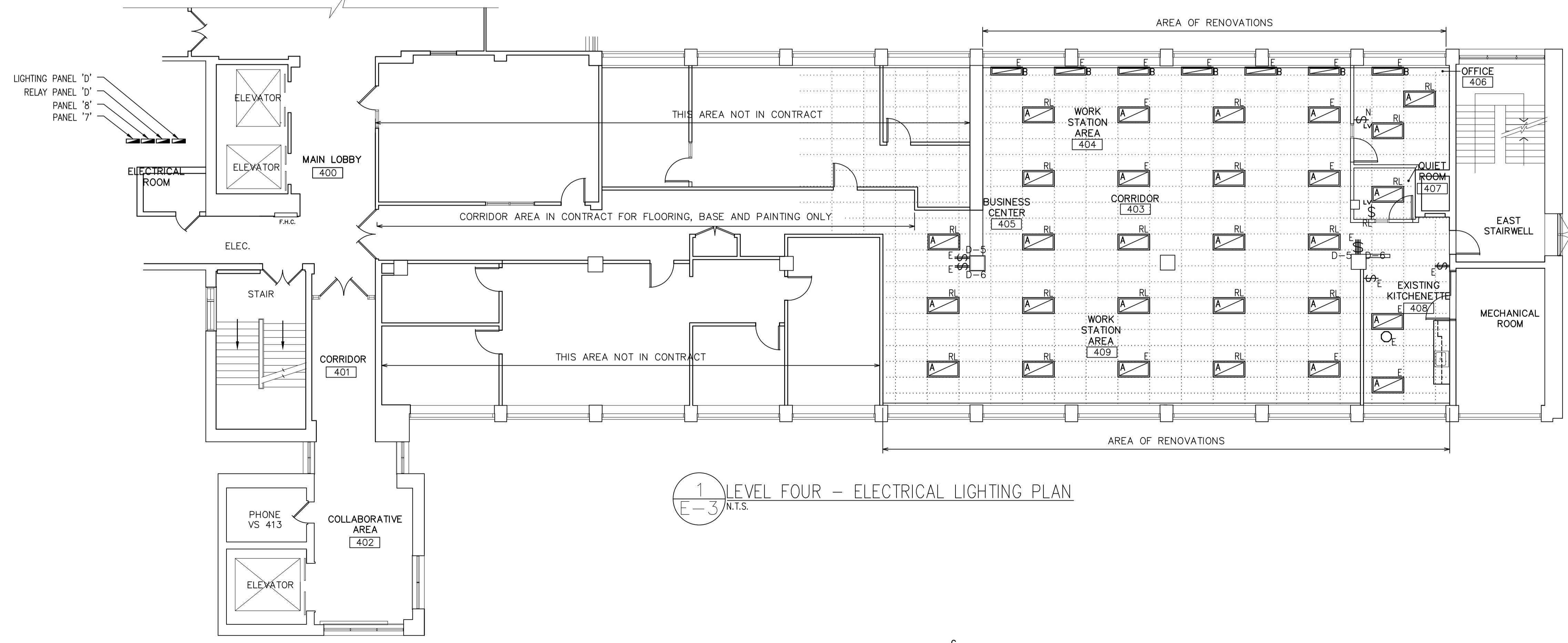
designed: KS  
 date: NOV 2017  
 drawn: JT  
 date: NOV 2017  
 approved: KS  
 Tender: MICHAEL SHEN  
 PWGSC Project Manager / Administrateur de projets TPSGC  
 project number: R.087416.001  
 drawing no.: E-3



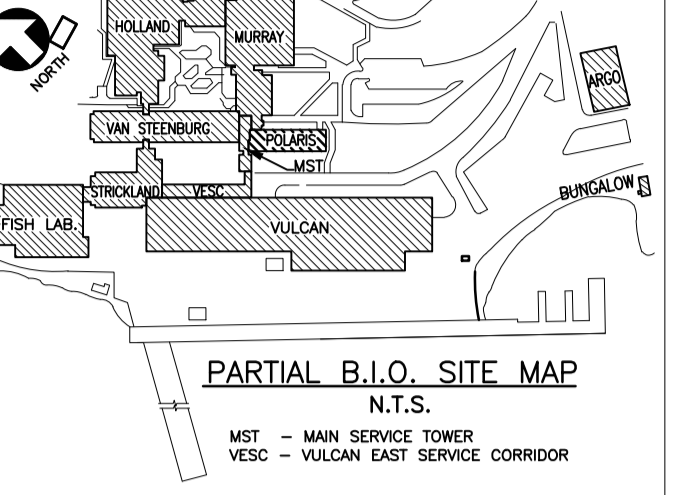
2 LEVEL FIVE - ELECTRICAL LIGHTING PLAN  
 E-3 N.T.S.

ELECTRICAL CONSTRUCTION NOTES

- RE-INSTALL THE TYPE A LIGHT FIXTURES REMOVED IN ACCORDANCE WITH ELECTRICAL DEMOLITION NOTE 2 TO SUIT THE NEW LAYOUT ON THIS DRAWING.
- USE SPARE TYPE A FIXTURES MADE AVAILABLE BY DEMOLITION FROM LEVEL 5 AS REQUIRED FOR NEW LAYOUT ON LEVEL 4.
- EXTEND FEEDERS AS REQUIRED USING NEAREST EXISTING AVAILABLE CIRCUITS.
- RELOCATE SWITCHES AND RE-CIRCUIT LIGHTING CONTROL ZONES TO SUIT NEW LAYOUT AS INDICATED.
- PROVIDE NEW COVER PLATES SUITABLE FOR USE WITH EXISTING LOW VOLTAGE SWITCHES IN LOCATIONS INDICATED THROUGHOUT AREA UNDER RENOVATION.
- ENSURE DUAL SWITCHING IS MAINTAINED FOR ALL TYPE A FIXTURES.
- PROVIDE NEW SWITCH AND OCCUPANCY SENSOR IN KITCHENETTE 513 TO MATCH EXISTING IN KITCHENETTE 408.
- PROVIDE NEW 120 VOLT, RECESSED DOWNLIGHT FIXTURES IN MEDIUM MEETING ROOM 504 AND TWO GANG LINE VOLTAGE DIMMER FOR CONTROL; SWITCHING AS INDICATED.
- PROVIDE ALL NECESSARY COMPONENTS FOR FIXTURE TYPE 'Y' IN NEW KITCHENETTE 513 TO MAKE A WORKING LUMINAIRE THE LENGTH OF THE CUPBOARD VALENCE AS INDICATED.
- ENSURE ALL FIXTURES IN AREA UNDER RENOVATION HAVE BEEN CLEANED AND RE-LAMPED AS REQUIRED, INCLUDING CORRIDOR 501 AND COLLABORATIVE AREA 502.
- UPON COMPLETING OF THE WORK, PROVIDE UPDATED PANEL SCHEDULES AND CIRCUIT NUMBERS ON ELECTRICAL AS-BUILT LAYOUT DRAWINGS.



1 LEVEL FOUR - ELECTRICAL LIGHTING PLAN  
 E-3 N.T.S.

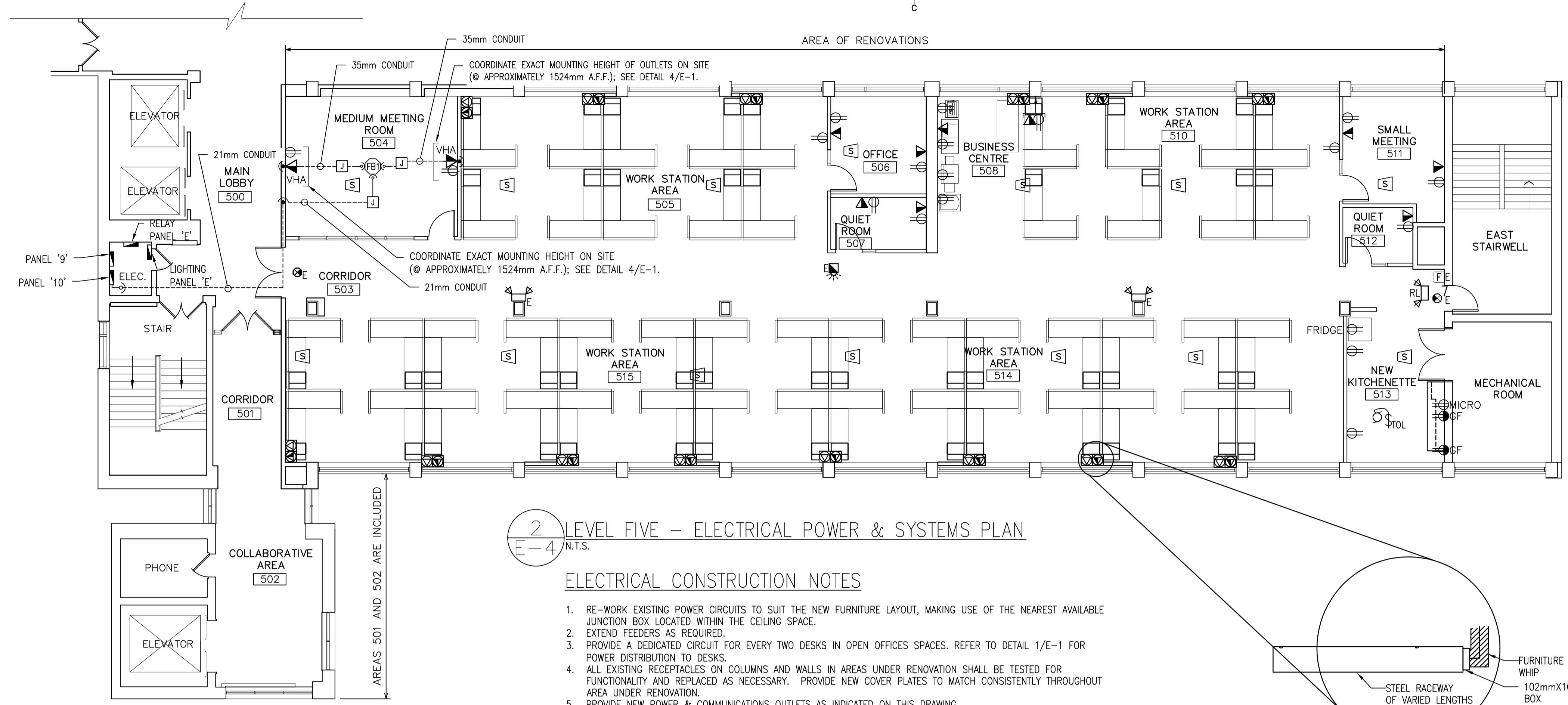


consultant:  
**trilogy**  
 interior design inc.  
 PO Box 321  
 Bedford Row  
 Halifax, Nova Scotia  
 Canada B3J 2N7  
 tel: 902 835-9333  
 fax: 902 835-9663

**emtech**  
 CONSULTING ENGINEERS UNITED  
 118 Collier Avenue, Dartmouth, N.S. Ph: 902 403-3058  
 email: tech@emtecheng.ca Cell: 902 593-3258



THESE DRAWINGS ARE TO BE USED SOLELY FOR THIS INTENDED PROJECT AND ARE NOT TO BE REPRODUCED OR USED FOR ANY OTHER PROJECT WITHOUT WRITTEN AUTHORIZATION DIRECTLY FROM TRILOGY INTERIOR DESIGN INC. ©TRILOGY INTERIOR DESIGN 2017

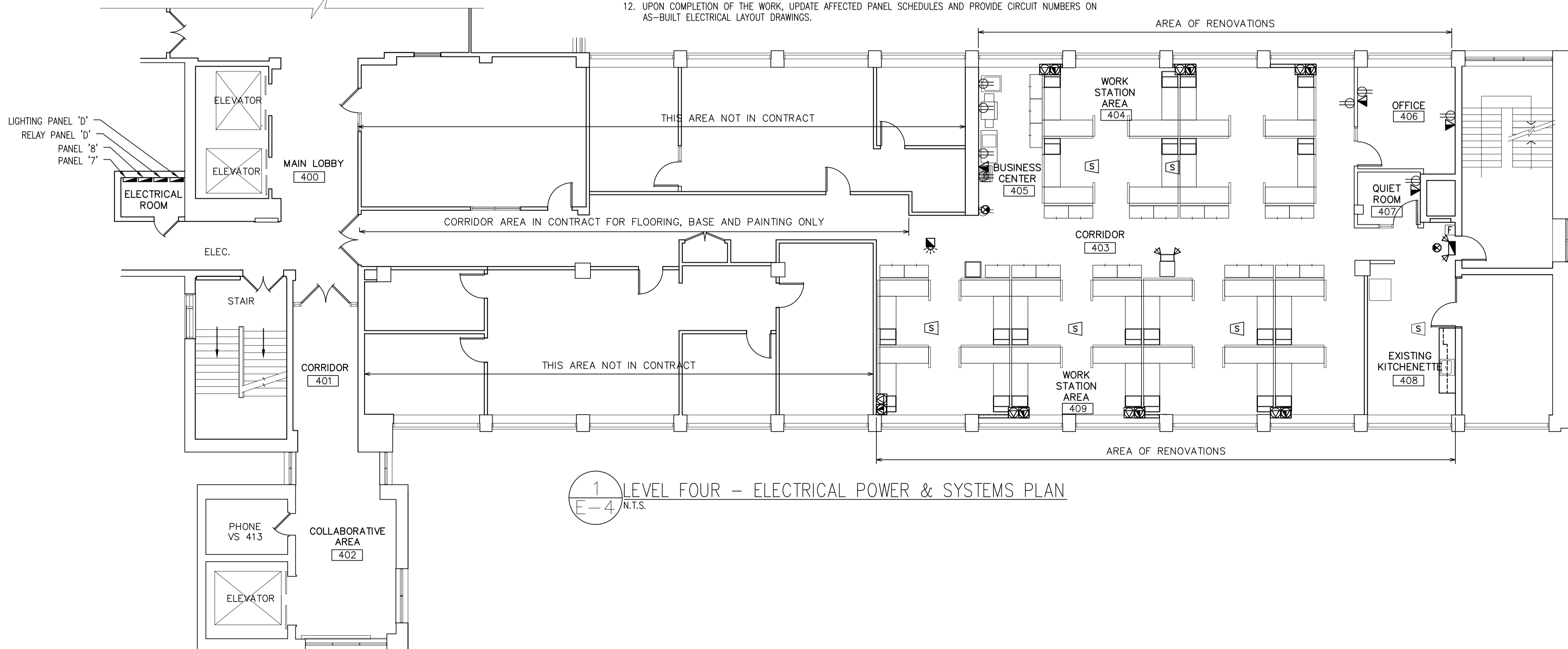
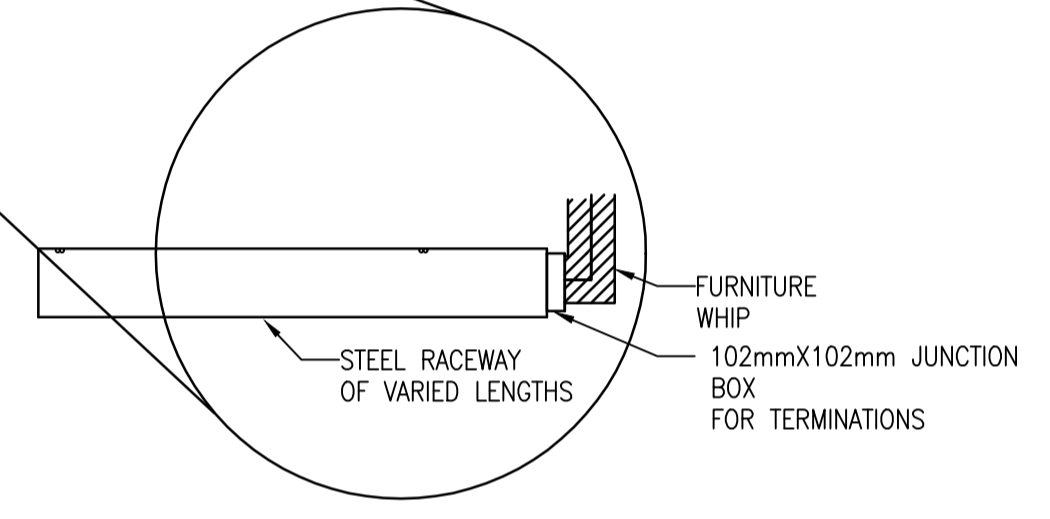


2 LEVEL FIVE - ELECTRICAL POWER & SYSTEMS PLAN  
 E-4 N.T.S.

ELECTRICAL CONSTRUCTION NOTES

- RE-WORK EXISTING POWER CIRCUITS TO SUIT THE NEW FURNITURE LAYOUT, MAKING USE OF THE NEAREST AVAILABLE JUNCTION BOX LOCATED WITHIN THE CEILING SPACE.
- EXTEND FEEDERS AS REQUIRED.
- PROVIDE A DEDICATED CIRCUIT FOR EVERY TWO DESKS IN OPEN OFFICES SPACES. REFER TO DETAIL 1/E-1 FOR POWER DISTRIBUTION TO DESKS.
- ALL EXISTING RECEPTACLES ON COLUMNS AND WALLS IN AREAS UNDER RENOVATION SHALL BE TESTED FOR FUNCTIONALITY AND REPLACED AS NECESSARY. PROVIDE NEW COVER PLATES TO MATCH CONSISTENTLY THROUGHOUT AREA UNDER RENOVATION.
- PROVIDE NEW POWER & COMMUNICATIONS OUTLETS AS INDICATED ON THIS DRAWING.
- EXACT LOCATION OF FLOOR MOUNTED BACK BOX, 'FB1', IN MEETING ROOM 504 TO BE DETERMINED ON SITE BY THE DEPARTMENTAL REPRESENTATIVE.
- PROVIDE MULTI-MEDIA OUTLETS TO MATCH OR RE-USE THOSE EXISTING IN ROOM 506 FOR EACH TV IN LOCATIONS INDICATED IN NEW MEETING ROOM 504; MOUNTING HEIGHTS TO BE CONFIRMED ON SITE BY THE DEPARTMENTAL REPRESENTATIVE. REFER TO DETAILS 3/E-1 & 4/E-1.
- PROVIDE DEDICATED CIRCUITS FOR EACH MACHINE (PLOTTER, PRINTER, FAX MACHINE, COPIER AND SHREDDER) IN THE BUSINESS CENTERS.
- PROVIDE 120V POWER AND MANUAL STARTER FOR NEW UV FILTER IN KITCHENETTE 513. USE EXISTING 15AMP CIRCUIT BREAKER IN PANEL '9' OR PANEL '10' OR PROVIDE NEW AS REQUIRED TO MATCH EXISTING. USE NEAREST AVAILABLE CIRCUIT.
- PROVIDE CAT 6 PATCH PANELS ON LEVELS 4 AND 5, COMPLETE WITH CAT 6 FT6 RATED CABLES, RUN TO ALL EXISTING & NEW DATA DROPS WITHIN SPACE BEING RENOVATED. REFER TO DETAIL 2/E-1.
- UPON COMPLETION OF THE WORK, UPDATE AFFECTED PANEL SCHEDULES AND PROVIDE CIRCUIT NUMBERS ON AS-BUILT ELECTRICAL LAYOUT DRAWINGS.

3 TYPICAL FURNITURE CONNECTION DETAIL  
 E-4 N.T.S.  
 NOTE: REFER TO DETAIL 1/E-1 FOR COMPLETE POWER FEED DETAIL.

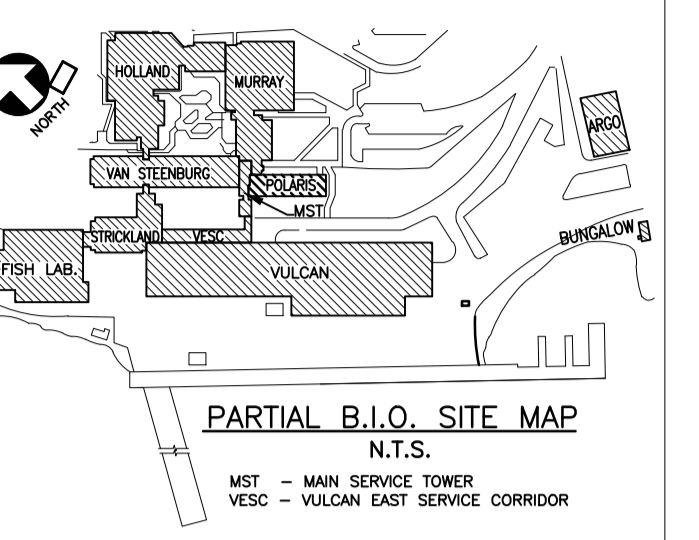


1 LEVEL FOUR - ELECTRICAL POWER & SYSTEMS PLAN  
 E-4 N.T.S.

revisions	date	project
00	REVISED & ISSUED FOR TENDER	27NOV17
0	ISSUED FOR TENDER & CONST	07JUL17

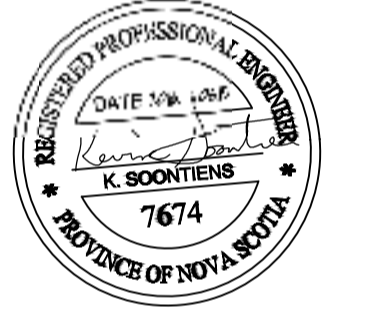
project: POLARIS BUILDING RENOVATIONS  
 BEDFORD INSTITUTE OF OCEANOGRAPHY DARTMOUTH - NS  
 drawing: dessein  
 designed: KS conçu  
 date: NOV 2017  
 drawn: JT dessiné  
 date: NOV 2017  
 approved: KS approuvé

date: Soumission  
 Tender: MICHAEL SHEN  
 PWGSC Project Manager / Administrateur de projets TPSGC  
 project number: no. du projet  
 R.087416.001  
 drawing no.: no. du dessin  
 E-4



consultant:  
**trilogy**  
 Interior Design Inc.  
 PO Box 321  
 Bedford Row  
 Halifax, Nova Scotia  
 Canada B3J 2N7  
 tel: 902 835-9333  
 fax: 902 835-9663

**emtech**  
 CONSULTING ENGINEERS LIMITED  
 118 Collier Avenue, Dartmouth, N.S. PH: 902 403-3058  
 email: tech@emtecheng.ca Cell: 902 553-3258



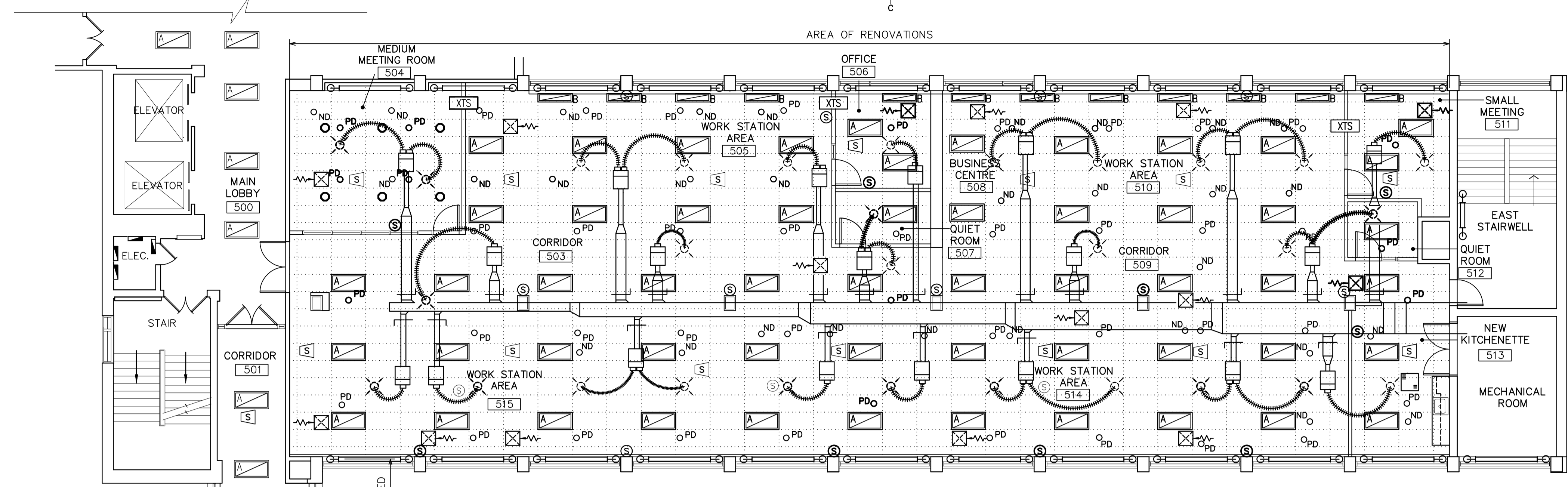
THESE DRAWINGS ARE TO BE USED SOLELY FOR THIS INTENDED PROJECT AND ARE NOT TO BE REPRODUCED OR USED FOR ANY OTHER PROJECT WITHOUT WRITTEN AUTHORIZATION DIRECTLY FROM TRILOGY INTERIOR DESIGN INC. ©TRILOGY INTERIOR DESIGN 2017

revisions	date	project
00	REVISED & ISSUED FOR TENDER	27NOV17
0	ISSUED FOR TENDER & CONST	07JUL17

POLARIS BUILDING RENOVATIONS  
 BEDFORD INSTITUTE OF OCEANOGRAPHY DARTMOUTH - NS  
 drawing: dessin

LEVELS 4 & 5  
 MECHANICAL & ELECTRICAL RCP COORDINATION

designed KS conçu  
 date NOV 2017  
 drawn JT dessiné  
 date NOV 2017  
 approved KS approuvé  
 Tender: MICHAEL SHEN, PWGSC Project Manager / Administrateur de projets TPSGC  
 project number: R.087416.001  
 drawing no. E-5 no. du dessin



2 LEVEL FIVE - MECHANICAL & ELECTRICAL RCP COORDINATION  
 E-5 N.T.S.

**HVAC LEGEND**

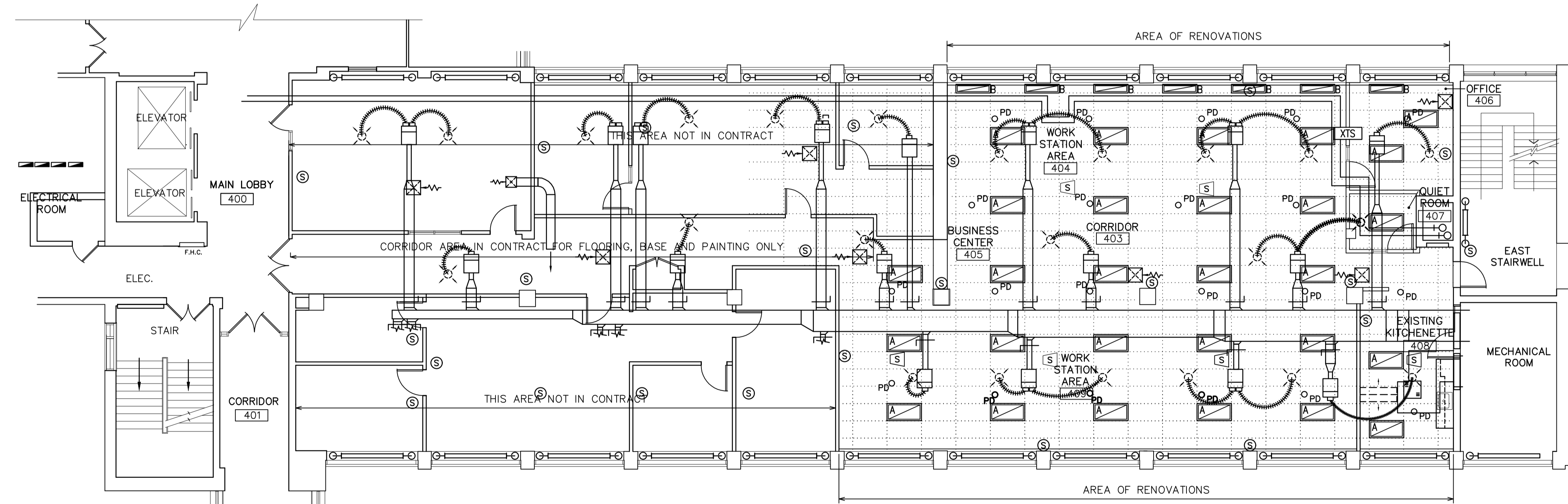
⊙	TEMPERATURE SENSOR
⊕	BALL VALVE
⊖	UV AIR PURIFIER
⊙	SUPPLY AIR DIFFUSER
⊗	RETURN AIR GRILLE
⊖	BALANCING DAMPER
—	FLEX DUCT

**SPRINKLER LEGEND**

⊕	PENDANT SPRINKLER HEAD
⊖	FIRE EXTINGUISHER

**ELECTRICAL LEGEND**

A	EXISTING 600mm X 1200mm, FLUORESCENT, 24 CELL PARABOLIC TROFFER
BL	EXISTING 300mm X 1200mm, FLUORESCENT, 16 CELL PARABOLIC TROFFER
PO	RECESSED POT LIGHT FIXTURE, PHILIPS LIGHTOLIER CALCULITE LED C6RN, C6L35883WZ10U, C6RDLWH
S	EXISTING FIRE ALARM SPEAKER
ND	EXISTING SOUND MASKING SPEAKER



1 LEVEL FOUR - MECHANICAL & ELECTRICAL RCP COORDINATION  
 E-5 N.T.S.