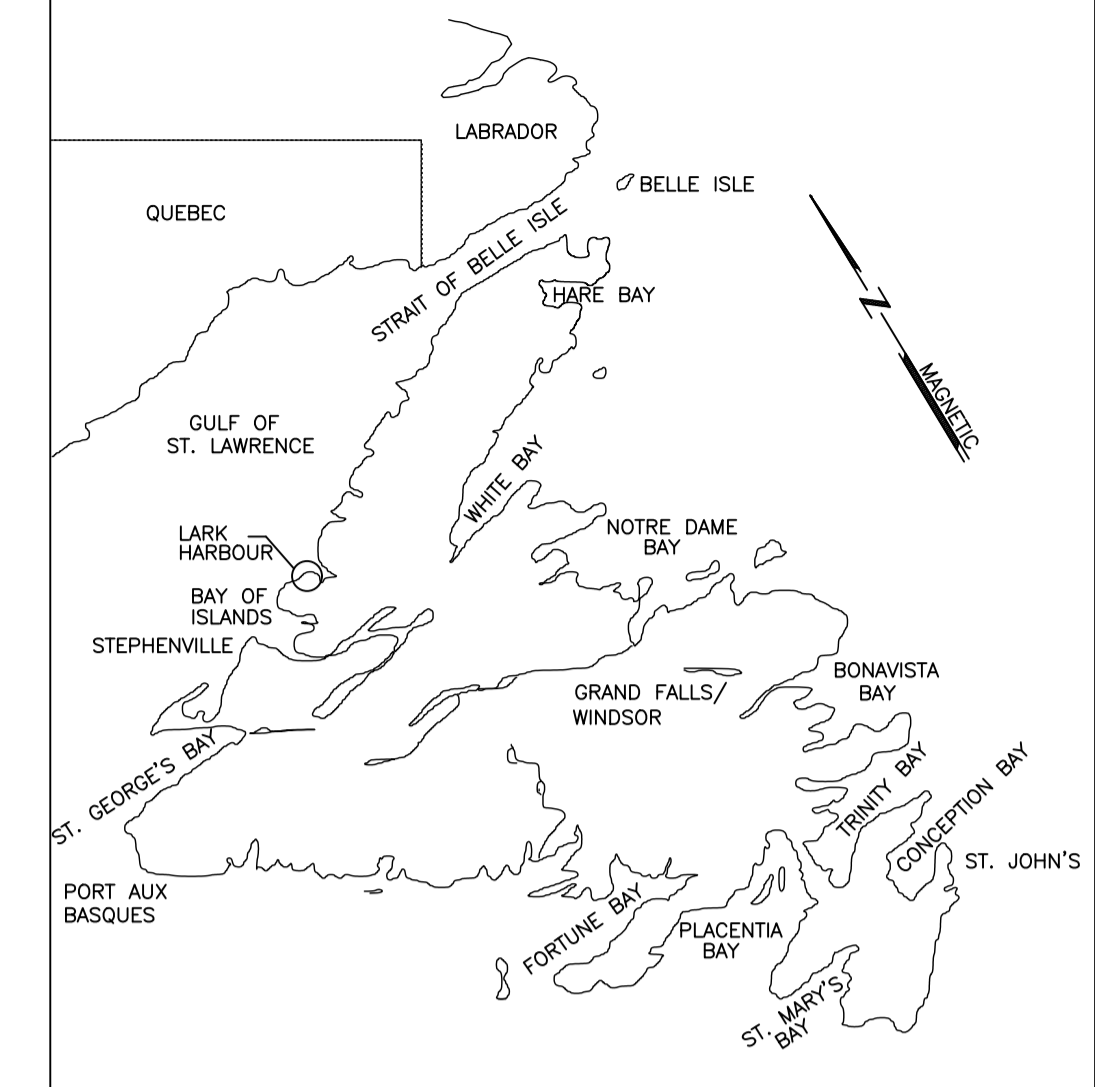


Fisheries Pêches
and Oceans et Océans
Real Property Services Immobiliers

GREENING OF GOVERNMENT OPERATIONS
LARK HARBOUR SAR
LARK HARBOUR
NEWFOUNDLAND AND LABRADOR

PROJECT NO. F6879-189202

Canada 

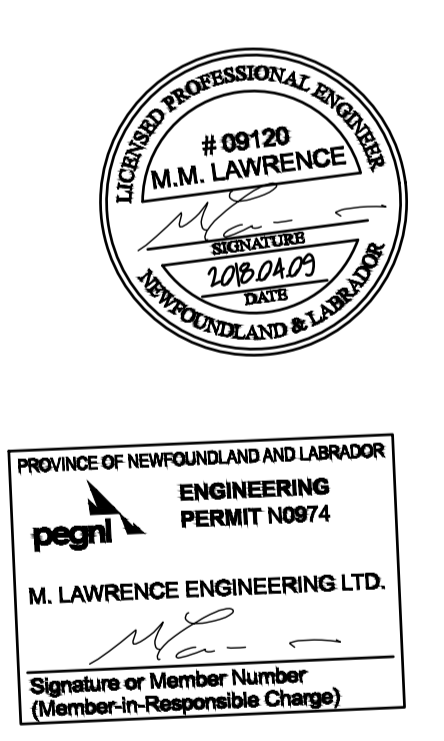


KEY LOCATION PLAN

M. LAWRENCE ENGINEERING LTD
Consulting Engineers
HALIFAX NS
902-222-5364
WWW.MLENGINEERING.CA

CONSULTANT

STAMP



1	ISSUED FOR TENDER	18/04/09	M.L.	M.L.
no.	revision	date	by	approved
	revision	date	par	approuvé

Project - projet
LARK HARBOUR - GREENING OF GOVERNMENT OPERATIONS

Drawing - dessin
LEVEL 1 - NEW MECHANICAL LAYOUT

drawn - dessiné	H. OSBORNE	designed - dessiné par	M. LAWRENCE
date - date	FEBRUARY 2018	checked - vérifié	M. LAWRENCE
scale - échelle	AS SHOWN	approved for tender - approuvé pour l'offre	
project no. - projet no.	F6879-189202	drawing no. - no du dessin	12G0102F020ME1
		sheet - feuille	ME-2

ELECTRICAL NOTES

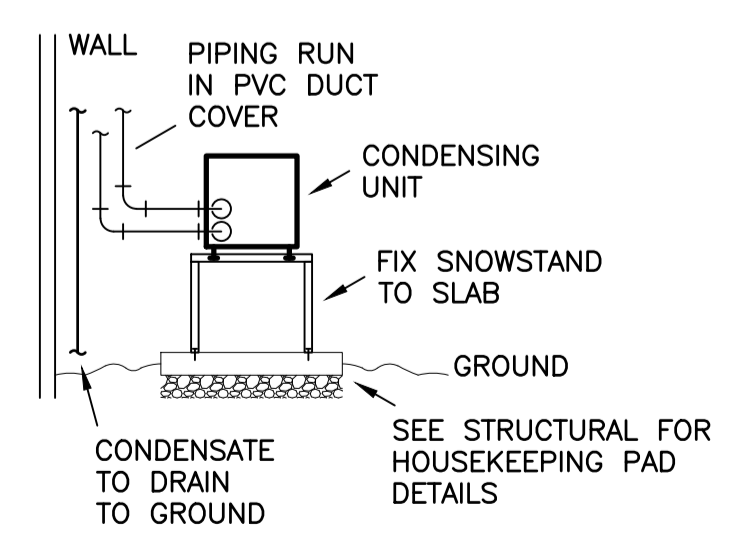
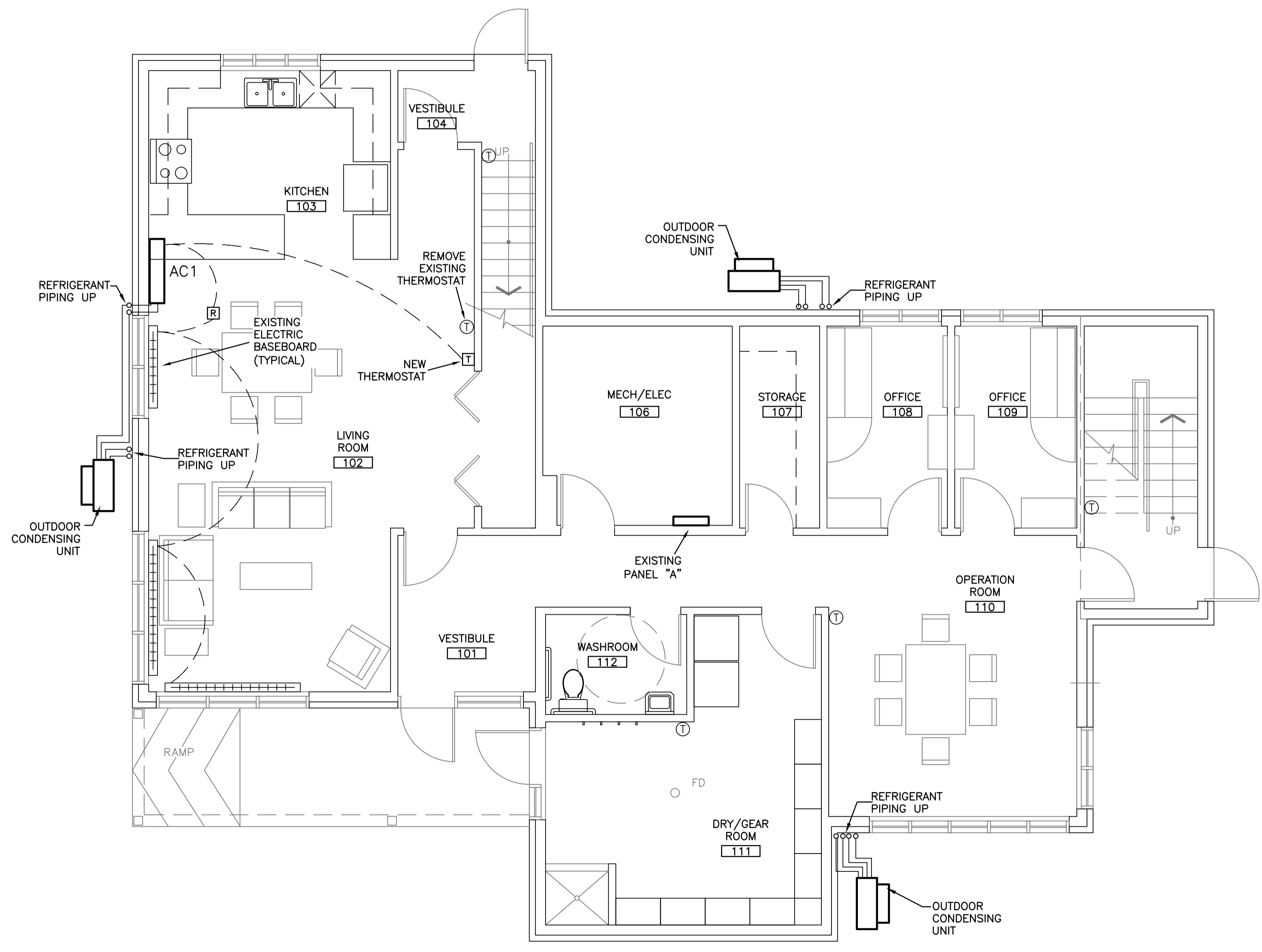
- SUPPLY AND INSTALL NEW 60 AMP, 2 POLE BREAKER IN EXISTING PANEL 'A', CIRCUIT LOCATIONS 69,71
- EXISTING PANEL 'A' IS A 400 AMP, 120/240 VOLT, 1 PHASE, 3 WIRE CULTER HAMMER POW-R-LINE PRL1a, LOCATED IN MECH/ELEC ROOM 106
- SUPPLY AND INSTALL NEW PANEL 'B' - 100AMP, 120/240 VOLT, 1 PHASE, 3 WIRE, 24 CIRCUIT PANEL IN MECH/ELEC ROOM 106. COORDINATE EXACT LOCATION ON SITE.
- NEW PANEL 'B' TO BE A POW-R-LINE 1a SERIES WITH BREAKERS: 3 X 20 AMP, 2 POLE AND 6 X 15 AMPS, 1 POLE.
- FEED NEW PANEL 'B' FROM THE 60 AMP, 2 POLE BREAKER INSTALLED IN PANEL 'A'. FEEDER TO BE 3C#6 AWG AC90.
- RELOCATE THE 15 AMP, 2 POLE BREAKER IN PANEL 'A', CIRCUIT LOCATIONS 69,71 (RO UNITE) TO NEW PANEL 'B'.
- REFEED THE RO UNIT FROM NEW PANEL 'B', UTILIZING THE RELOCATED 15 AMP, 2 POLE BREAKER. FEED TO BE 3C#12 AWG AC90.
- SUPPLY AND INSTALL NEW 30 AMP, 208 VOLT, 3R DISCONNECT SWITCHES ADJACENT NEW OUTDOOR CONDENSING UNITS AC1, AC2 & AC3.
- SUPPLY AND INSTALL FEEDERS (12/3 NMD90) FROM PANEL 'B', TO NEW CONDENSING UNIT DISCONNECT SWITCHES.
- EXTEND FEEDER FROM DISCONNECT SWITCHES TO AC OUTDOOR CONDENSING UNITS UTILIZING LTF CONDUIT OR TECK CABLE.
- PROVIDE TYPE-WRITTEN PANEL DIRECTORY WITHIN PANEL 'B', IDENTIFYING LOADS BEING FED FROM EACH BREAKER (EXAMPLE: AC1 OUTDOOR CONDENSER).
- SUPPLY AND INSTALL LAMICOID PLATES ON NEW AC CONDENSING UNIT DISCONNECT SWITCHES (EXAMPLE: PANEL 'B', CIRCUIT 1,3).
- WIRING BETWEEN AC OUTDOOR CONDENSING UNITS TO INDOOR EVAPORATOR UNITS IN BUILDING TO BE INSTALLED BY MECHANICAL CONTRACTOR.
- MECHANICAL CONTRACTOR TO RUN CONTROL WIRE FROM EVAPORATOR TO NEW THERMOSTAT AND TO NEW RELAY. ELECTRICAL CONTRACTOR TO SUPPLY AND INSTALL NEW RELAY TO CONTROL EXISTING ELECTRIC BASEBOARD RADIATOR(S) AS AUXILIARY HEAT.
- PROVIDE FIRE STOPPING AT ALL LOCATIONS WHERE CABLES PENETRATE WALLS, FLOORS AND CEILINGS.

EQUIPMENT SCHEDULE

AC1 - MULTI ZONE DUCTLESS SPLIT HEAT PUMP SYSTEM. MITSUBISHI MODEL MXZ-2B20NA OUTDOOR UNIT, 26,400 BTU/HR HEATING CAPACITY AND TWO MITSUBISHI MODEL MSZ-GE12NA INDOOR UNITS, 13,800 BTU/HR NOMINAL HEATING CAPACITY. C/W PROGRAMMABLE THERMOSTAT, WIND BAFFLE, STAND, HOUSEKEEPING PAD, AND AUXILIARY HEAT OUTPUT. ELECTRICAL: 208V/1PH/60hz, MCA 15 AMPS, MOP 20 AMPS

AC2 - MULTI ZONE DUCTLESS SPLIT HEAT PUMP SYSTEM. MITSUBISHI MODEL MXZ-2B20NA OUTDOOR UNIT, 22,00 BTU/HR HEATING CAPACITY AND TWO MITSUBISHI MODEL MSZ-GE09NA INDOOR UNITS, 10,900 BTU/HR NOMINAL HEATING CAPACITY. C/W PROGRAMMABLE THERMOSTAT, WIND BAFFLE, STAND, HOUSEKEEPING PAD, AND AUXILIARY HEAT OUTPUT. ELECTRICAL: 208V/1PH/60hz, MCA 15 AMPS, MOP 20 AMPS

AC3 - MULTI ZONE DUCTLESS SPLIT HEAT PUMP SYSTEM. MITSUBISHI MODEL MXZ-2B20NA OUTDOOR UNIT, 22,00 BTU/HR HEATING CAPACITY AND TWO MITSUBISHI MODEL MSZ-GE09NA INDOOR UNITS, 10,900 BTU/HR NOMINAL HEATING CAPACITY. C/W PROGRAMMABLE THERMOSTAT, WIND BAFFLE, STAND, HOUSEKEEPING PAD, AND AUXILIARY HEAT OUTPUT. ELECTRICAL: 208V/1PH/60hz, MCA 15 AMPS, MOP 20 AMPS



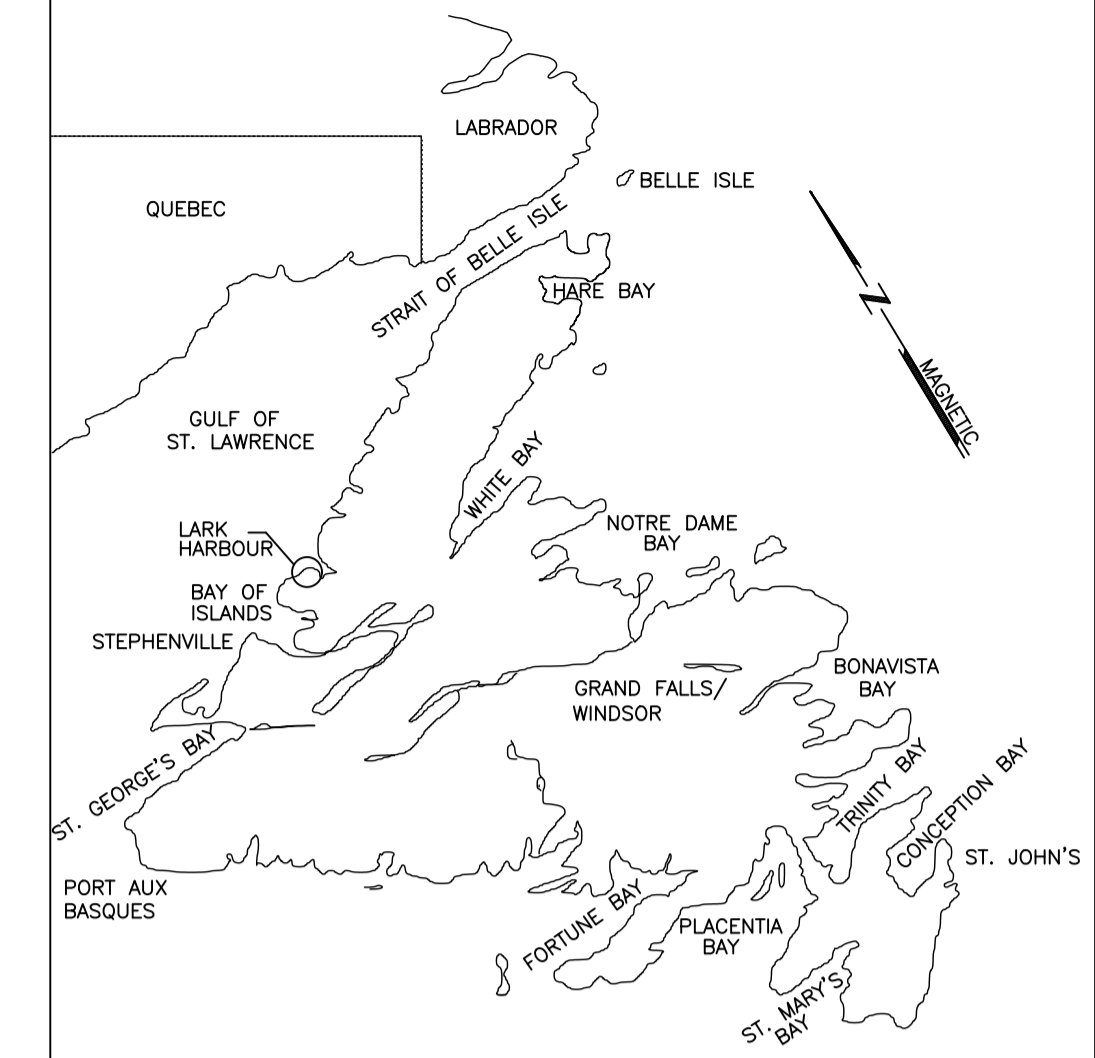
CONDENSING UNIT DETAIL
SCALE : N.T.S.

2
ME2

MECHANICAL - LEVEL 1

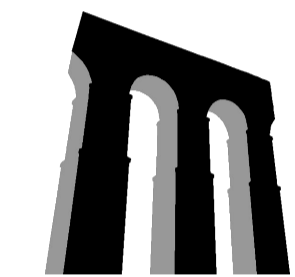


1
ME2



KEY LOCATION PLAN

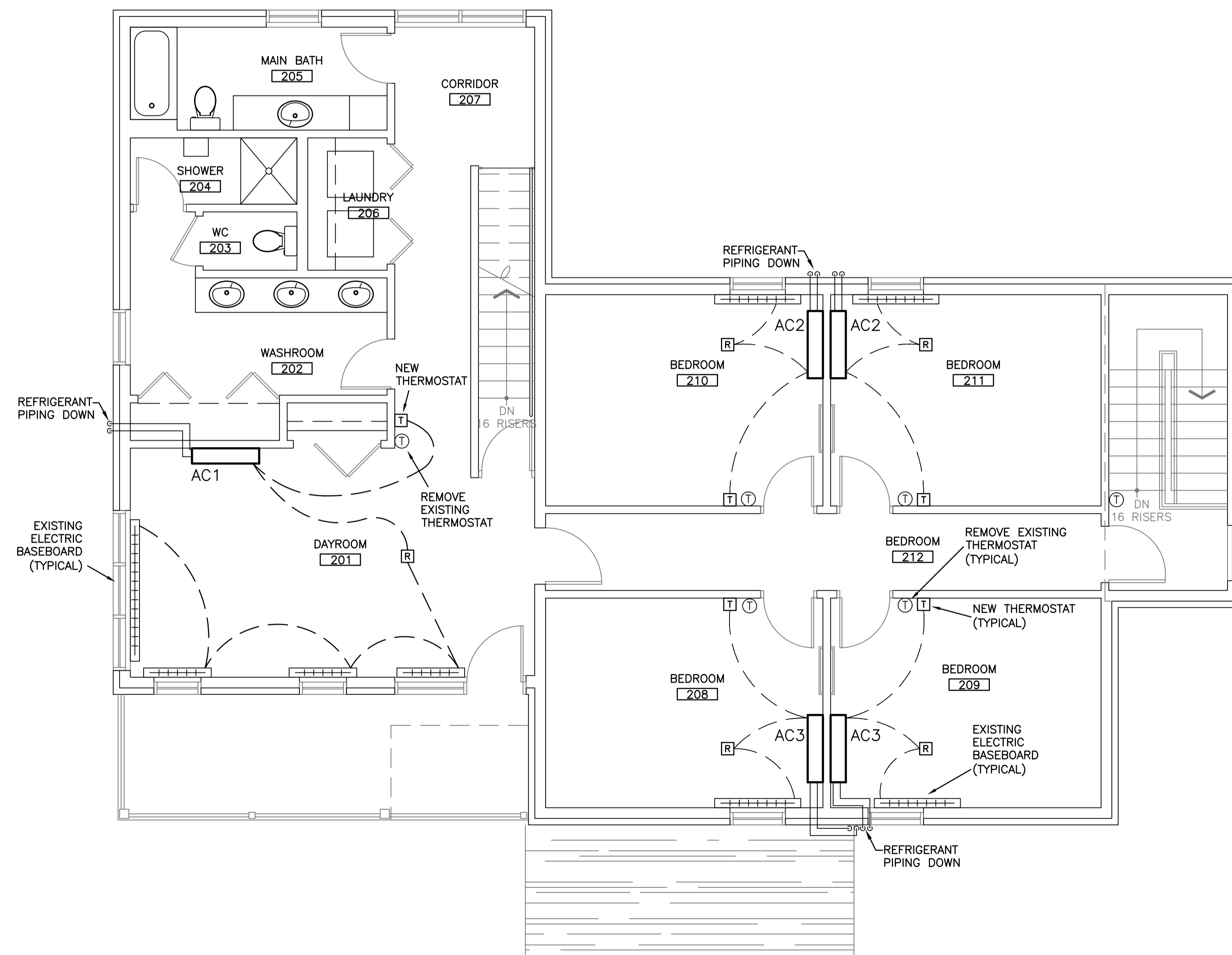
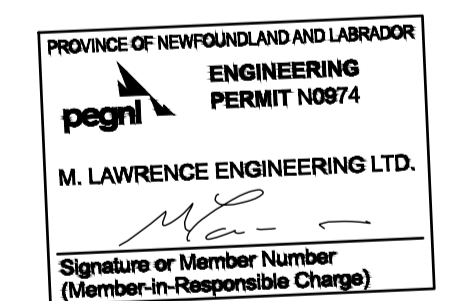
M. LAWRENCE ENGINEERING LTD



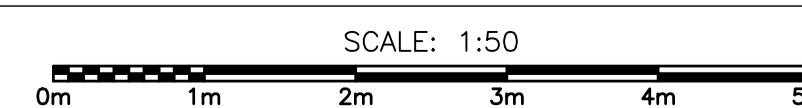
Consulting Engineers
HALIFAX NS
902-222-5364
WWW.MLENGINEERING.CA

CONSULTANT

STAMP



MECHANICAL – LEVEL 2



1
ME3

1	ISSUED FOR TENDER	18/04/09	M.L.	M.L.
no.	revision	date	by	approved
no.	revision	date	par	approuvé

Project – projet

LARK HARBOUR –
GREENING OF
GOVERNMENT OPERATIONS

Drawing – dessin

LEVEL 2 – NEW
MECHANICAL LAYOUT

drawn – dessiné	H. OSBORNE	designed – dessiné par	M. LAWRENCE
date – date	FEBRUARY 2018	checked – vérifié	M. LAWRENCE
scale – échelle	AS SHOWN	approved for tender – approuvé pour l'offre	
project no. – projet no.	F6879-189202	drawing no. – no du dessin	12G0102F020ME1
		sheet – feuille	ME-3