



NORR

2300, 411 - 1st Street SE,
Calgary, AB Canada T2G 4Y5
norr.com

NORR ARCHITECTS ENGINEERS PLANNERS
A Partnership of Limited Companies

Poon McKenzie Architects (Alberta) Inc., Poon McKenzie Holdings Inc.
NORR is a trademark owned by Ingenium Group Inc. and is used under license.

Victor Smith, Architect, AAA, B.Arch, MAIBC
Bruce G. McKenzie, Architect, AAA, M.Arch, MAIBC
A. Silvio Baldassarra, Architect, AAA, B.Arch, MAIBC
Adrian Todeila, P.Eng., APEGA
Chris Pal, P.Eng., APEGA

GOVERNMENT OF CANADA ADDITION

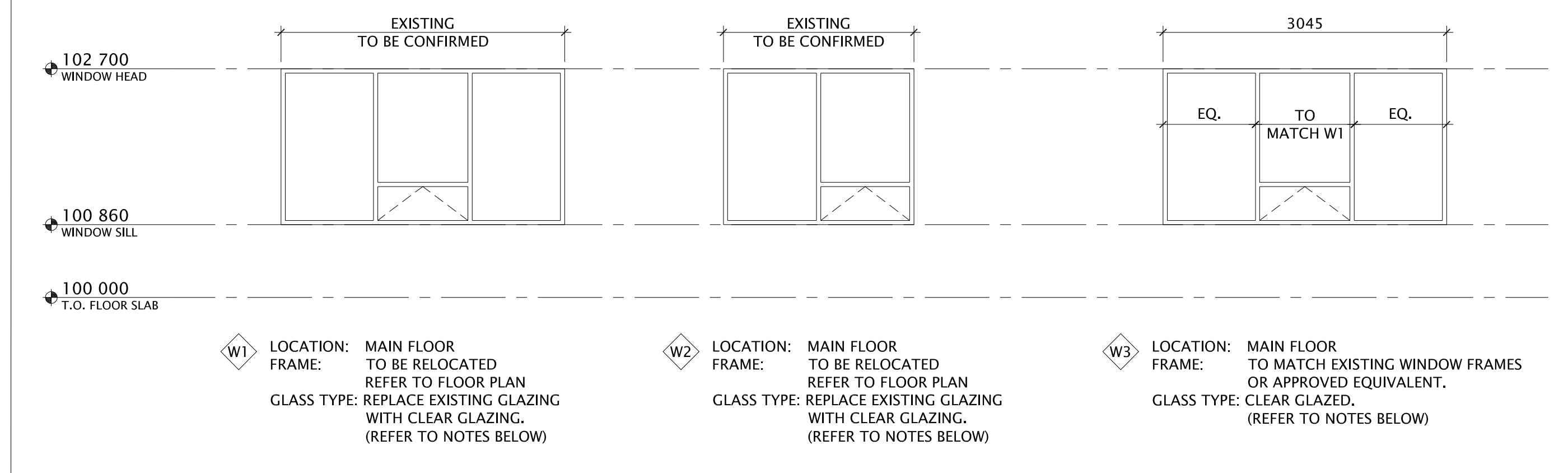
INNISFAIL, ALBERTA, CANADA

NORR JOB NO: NCCA-17-0228

ISSUED FOR TENDER - MARCH 29, 2018

ARCHITECTURAL	STRUCTURAL	MECHANICAL	ELECTRICAL
<p>NORR ARCHITECTS ENGINEERS PLANNERS SUITE 2300, 411 - 1st STREET S.E. CALGARY, ALBERTA T2G 4Y5</p> <p>PHONE: 403.264.4000 FAX: 403.269.7215</p>	<p>NORR ARCHITECTS ENGINEERS PLANNERS SUITE 2300, 411 - 1st STREET S.E. CALGARY, ALBERTA T2G 4Y5</p> <p>PHONE: 403.264.4000 FAX: 403.269.7215</p>	<p>NORR ARCHITECTS ENGINEERS PLANNERS SUITE 2300, 411 - 1st STREET S.E. CALGARY, ALBERTA T2G 4Y5</p> <p>PHONE: 403.264.4000 FAX: 403.269.7215</p>	<p>NORR ARCHITECTS ENGINEERS PLANNERS SUITE 2300, 411 - 1st STREET S.E. CALGARY, ALBERTA T2G 4Y5</p> <p>PHONE: 403.264.4000 FAX: 403.269.7215</p>
<p>ARCHITECTURAL DRAWINGS</p> <p>A00-00-01 COVER SHEET/DRAWING LIST</p> <p>A00-01-02 GENERAL NOTES, BUILDING CONSTRUCTION TYPES & WINDOW SCHEDULE</p> <p>A01-00-01 BUILDING CODE REVIEW & LIFE SAFETY PLAN</p> <p>A10-00-00 SITE PLAN</p> <p>A20-00-01 PLANS FLOOR PLANS REFLECTED</p> <p>CEILING PLANS</p> <p>A20-01-01 ROOF PLANS - EXISTING & PROPOSED</p> <p>A30-00-01 BUILDING ELEVATIONS</p> <p>A31-00-01 BUILDING SECTIONS</p> <p>A33-00-01 INTERIOR ELEVATIONS</p> <p>A40-00-01 ENLARGED PLAN</p> <p>A51-00-01 SECTION DETAILS</p>	<p>STRUCTURAL DRAWINGS</p> <p>S-01 GENERAL NOTES</p> <p>S-02 GENERAL NOTES</p> <p>S-03 TYPICAL DETAILS</p> <p>S-04 TYPICAL DETAILS</p> <p>S-05 TYPICAL DETAILS</p> <p>S-06 PLANS AND SECTIONS FOUNDATION PLAN, FRAMING PLAN AND SECTIONS</p>	<p>MECHANICAL DRAWINGS</p> <p>M-00-01 MECHANICAL LEGEND, SCHEDULE, DRAWING LIST, SPECIFICATIONS</p> <p>M-20-01 PIPING DEMOLITION AND CONSTRUCTION PLANS</p> <p>M-50-01 VENTILATION DEMOLITION AND CONSTRUCTION PLANS</p>	<p>ELECTRICAL DRAWINGS</p> <p>E00-00 ELECTRICAL COVER SHEET</p> <p>E00-01 DEMOLITION AND NEW POWER & SYSTEM PLANS</p> <p>E10-00 LIGHTING PLANS, SCHEDULES AND SINGLE LINE DIAGRAM</p> <p>E20-00 ELECTRICAL SPECIFICATIONS</p> <p>E20-01 ELECTRICAL SPECIFICATIONS</p>

WINDOW SCHEDULE



COLUMN & BEAM RATING

PROVIDE F.R.R. TO ALL COLUMNS, LOAD BEARING WALLS AND BEAMS EQUAL TO THE STRUCTURE BEING SUPPORTED (REFER TO BUILDING CODE REVIEW).

STRUCTURAL

READ THESE DRAWINGS IN CONJUNCTION WITH THE STRUCTURAL ENGINEER'S DRAWINGS. WHERE STRUCTURAL DRAWINGS CONFLICT WITH THE REQUIREMENTS OF THE BUILDING CODE, THE STRUCTURAL ENGINEER SHALL BE CONSULTED FOR DIRECTION. NO CHANGE TO THE STRUCTURAL DESIGN SHALL BE IMPLEMENTED WITHOUT WRITTEN CONSENT FROM THE STRUCTURAL ENGINEER.

CABINETS

THE ARCHITECTURAL PLANS INDICATE PLANNING & LAYOUT OF A STATIONARY CABINET WITH SINK.

IT IS THE INTENTION OF THE OWNER THAT THE CABINET CASEWORK & ALL RELATED COUNTERTOPS & MILLWORK BE PROVIDED ON A DESIGN/BUILD BASIS, WITH ALL WORK INCLUDED TO PROVIDE COMPLETE, CODE COMPLIANT & FUNCTIONAL INSTALLATION COORDINATED WITH OWNER SUPPLIED APPLIANCES & THE WORK OF OTHER TRADES INCLUDING PLUMBING, ELECTRICAL POWER & LIGHTING.

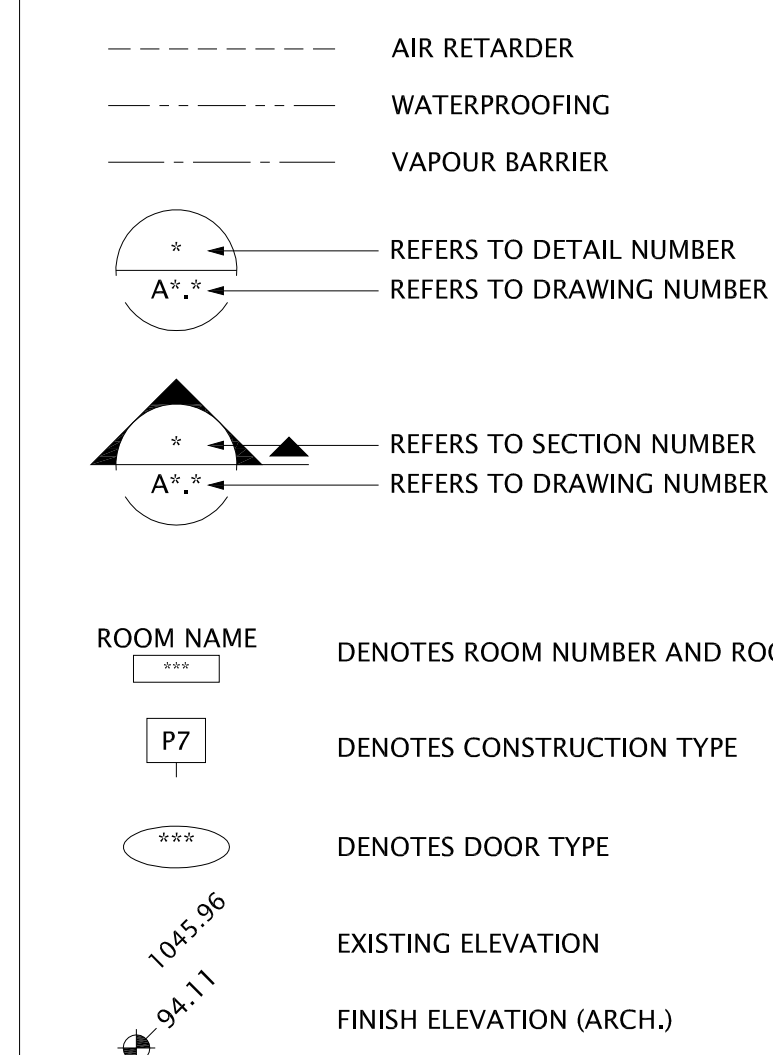
MECHANICAL & ELECTRICAL

THE ARCHITECTURAL DRAWINGS INDICATE GENERAL DESIGN INTENT FOR MAIN DUCT RUNS & SHAFTS, FURNACE & WATER HEATER FLUE LOCATIONS, ELECTRICAL PANEL LOCATIONS, POWER & COMMUNICATION OUTLETS, LIGHTING & RELATED SWITCHING.

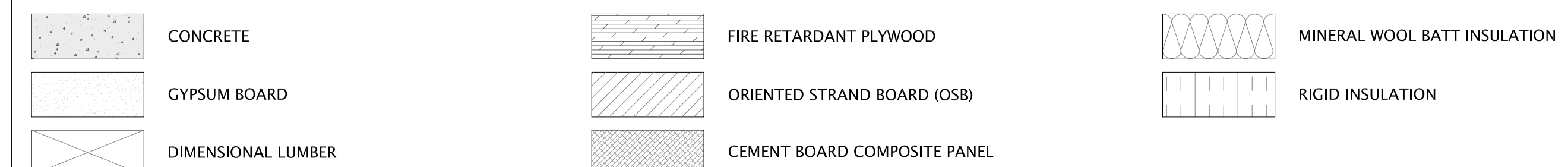
IT IS THE INTENTION OF THE OWNER THAT THE MECHANICAL & ELECTRICAL SYSTEMS BE PROVIDED ON A DESIGN CONSULTANT BASIS, WITH ALL WORK INCLUDED TO PROVIDE COMPLETE, CODE COMPLIANT SYSTEMS FOR HEATING, PLUMBING, ELECTRICAL POWER, COMMUNICATIONS & LIGHTING.

REFER TO DRAWINGS &/OR ADDITIONAL SPECIFICATIONS ISSUED BY THE CONSTRUCTION MANAGER.

SYMBOLS LEGEND



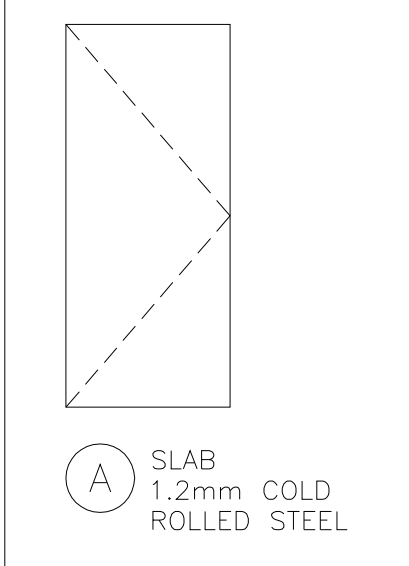
HATCH LEGEND



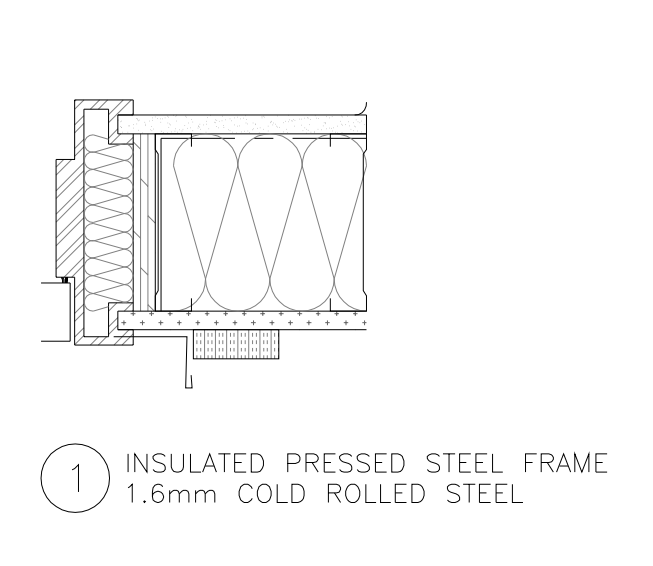
DOOR SCHEDULE

DOOR		REBATE DIMENSIONS			TYPE	MAT.	FIN.	GLAZING	FRAME			FIRE LABELS		HARDWARE GROUP	REMARKS
No.	LOCATION	W	H	TH					TYPE	MAT.	FIN.	F.R.R.	TEMP. RISE (250° C after)		
D1	EXISTING LUNCH ROOM														EXISTING DOOR
D2	LUNCH ROOM ADDITION	914	2133	45	A	HMI	PT							B1 L1 C1 S1 M1 M2 M3 M4	RE-LOCATED DOOR, ENSURE DOOR MEETS ALL DOOR AND HARDWARE REQUIREMENTS.
D3	LUNCH ROOM ADDITION	914	2133	45	A	HMI	PT							B1 L1 C1 S1 M1 M2 M3 M4	RE-LOCATED DOOR, ENSURE DOOR MEETS ALL DOOR AND HARDWARE REQUIREMENTS.

DOOR TYPES



FRAME TYPES



HARDWARE SCHEDULE ABBREVIATION

- B BUTTS / PIVOTS HARDWARE (1 1/2 PAIR PER LEAF, UNLESS NOTED OTHERWISE)
- B1 BALL BEARING NRP BUTTS
- L LATCHING HARDWARE
- L1 DEAD BOLT KEY ONE SIDE THUMB TURN OPPOSITE C/W 25mm THROW MIN.
- C CLOSURE
- C1 HEAVY DUTY CLOSURE ANSI F13 OR ANSI F15 CLOSER SURFACE MOUNTED PUSH SIDE
- S STOPS
- S1 INTEGRAL STOP CLOSER
- M MISCELLANEOUS HARDWARE
- M1 THRESHOLD
- M2 WEATHERSTRIP AND DOOR SWEEP
- M3 STRIKE BUCKET
- M4 WEDGE TO PREVENT SPREAD

DOOR SCHEDULE ABBREVIATION

- ALUM ALUMINUM
- DG DOUBLE GLAZED
- FG FROSTED GLASS
- FLG FIRELITE GLASS
- HCWD HOLLOW CORE WOOD
- HM HOLLOW METAL
- HMI HOLLOW METAL INSULATED
- M METAL
- MCI METAL CLAD INSULATED
- PF PREFINISHED
- PS PRESSED STEEL
- PT PAINT
- ST STAINED
- SCWD SOLID CORE WOOD
- SG SINGLE GLAZED
- TG TEMPERED GLASS
- WD WOOD
- WG WIRED GLASS (6mm)

GENERAL NOTES

- ALL CONSTRUCTION TO COMPLY WITH NATIONAL BUILDING CODE, REGULATIONS, RULES AND BY-LAWS SET BY THE AUTHORITY HAVING JURISDICTION.
- PROVIDE AND MAINTAIN CONTINUOUS FIRE/SMOKE SEPARATIONS. EACH TRADE IS TO FIRE STOP ALL SERVICE PENETRATIONS ASSOCIATED WITH THEIR WORK WITH APPROVED AND U.L.C. LISTED FIREPROOF SYSTEMS.
- PROVIDE AND MAINTAIN CONTINUOUS AIR/VAPOUR BARRIER SYSTEM. CAULK AROUND OPENINGS AND GAPS WITH SEALANT TO ACHIEVE A CONTINUOUS BARRIER.
- PROVIDE AND MAINTAIN CONTINUOUS ACOUSTIC BARRIER SYSTEM. AVOID SOUND TRANSMISSION THROUGH DIRECT CONTACT AT ACOUSTICALLY TREATED SURFACES. COMPLETELY SEAL ALL PENETRATIONS WITH ACOUSTIC SEALANT, TAPE AND INSULATION AS REQUIRED TO PREVENT SOUND TRANSFER AND MAINTAIN THE REQUIRED STC RATINGS OF THE WALL SYSTEMS. PROVIDE APPROVED ISOLATION METHODS TO ALL NOISE GENERATING AND MOVING EQUIPMENT.
- VERIFY ALL CONDITIONS AND DIMENSIONS ON SITE PRIOR TO FABRICATION. PROMPTLY NOTIFY THE ARCHITECT OF ANY ERRORS OR OMISSIONS.
- DIMENSIONS ARE TAKEN TO GRID LINES, TO FACE OF STUD, TO FACE OF CONCRETE AND / OR BLOCK WALLS AND TO FACE OF CONCRETE SLAB.
- THE GENERAL CONTRACTOR SHALL ARRANGE FOR AND COORDINATE ALL INCOMING AND OUTGOING MECHANICAL AND ELECTRICAL SERVICES FOR THIS PROJECT.
- THE GENERAL CONTRACTOR SHALL COORDINATE ALL ACTIVITIES AS REQUIRED TO ENSURE EFFICIENT, CORRECT AND ORDERLY INSTALLATION OF EACH PART OF THE WORK TO AVOID CONFLICT IN THE TRADE WORK AND SCHEDULE.
- REFER TO STRUCT. DWGS FOR COLUMN SIZES, LOCATIONS AND REINFORCEMENT.
- ALL DOORS AND WINDOWS REFERENCED ON THE PLANS AND SCHEDULES ARE SHOWN NOMINAL SIZE. CONFIRM AND VERIFY ALL ROUGH OPENING SIZE REQUIREMENTS WITH THE SELECTED PRODUCT MANUFACTURER AND SITE SITE CONDITIONS PRIOR TO FABRICATION. REFER TO MANUFACTURERS INSTALLATION MANUAL.
- ALL INTERIOR DOOR OPENINGS IN STUD FRAMING WALLS TO BE SPACED A MINIMUM OF 100mm (4") FROM THE ADJACENT WALL, UNLESS NOTED NOTED OTHERWISE.
- PROVIDE AND INSTALL SOLID BLOCKING AND BACKING WITHIN THE WALLS FOR ALL WALL MOUNTED CABINETS AND ACCESSORIES, HANDRAILS, GUARDS, LADDERS, MECHANICAL AND ELECTRICAL FIXTURES AND EQUIPMENT, ETC. AS REQUIRED FOR PROPER ANCHORING.
- ALL CONSTRUCTION TO COMPLY WITH INDUSTRY TRADE STANDARDS, AS WELL AS MANUFACTURERS' RECOMMENDATIONS, TO THE EXTENT THAT THOSE INSTRUCTIONS AND RECOMMENDATIONS ARE MORE EXPLICIT OR STRINGENT THAN THE REQUIREMENTS CONTAINED IN THESE CONTRACT DOCUMENTS.
- MECHANICAL LINES ARE NOT TO BE IN CONTACT WITH THE STUD WALLS OR CONCRETE WALL OR FLOOR ASSEMBLIES. ISOLATE ALL PIPES TO AVOID SOUND TRANSMISSION. INSTALL NEOPRENE RUBBER PAD ON TOP OF SUBSTRATE SURFACE (BOTTOM PLATE, CONCRETE ETC.) BEFORE ALL MECHANICAL CLAMPS ARE TIGHTENED INTO PLACE.
- CONFIRM ALL ROUGH OPENING SIZES AND CONNECTION REQUIREMENTS FOR MECHANICAL, ELECTRICAL AND OWNER SUPPLIED EQUIPMENT. ADJUST ROUGH OPENING SIZES TO SUIT.
- INSTALL & CONNECT OWNER SUPPLIED EQUIPMENT OR APPLIANCES AS DIRECTED, CENTERED, LEVEL AND TRUE.
- PROVIDE ALL WARRANTIES, BONDS AND MANUFACTURERS' OPERATING INSTRUCTION AND SERVICE MANUALS AS WELL AS PARTS LISTS AT THE COMPLETION OF THE PROJECT.
- EXTERIOR WALL CONSTRUCTION TO COMPLY WITH "ALBERTA WALL & CEILING BUREAU" DETAILS AND REQUIREMENTS.
- INTERIOR AND EXTERIOR STEEL STUDS TO BE DESIGNED BY A PROFESSIONAL ENGINEER. FOR STUD SPACING AND STUD GAUGE, REFER TO STEEL STUD ENGINEERS DESIGN / DRAWINGS.
- DOOR DETAILS, TYPE, AND HARDWARE SCHEDULE PER PROVIDED SPECIFICATION DOCUMENT - DIVISION 08.

WALL AND PARTITION NOTES

- ALL INTERIOR WALLS EXTEND TO U/S OF STRUCTURE UNLESS NOTED OTHERWISE.
- REFER TO STRUCTURAL DRAWINGS FOR SHEAR WALL REQUIREMENT & LOCATION.
- WALL FRAMING MAXIMUM 400mm O.C. ALL FRAMING TO BE SECURED TO FLOOR, THEN WALLS, THEN FLOORS.
- TO MINIMIZE GAPS, CEILING BOARD TO BE INSTALLED FIRST, THEN WALLS, THEN FLOORS.
- STAGGER ALL JOINTS. USE SCREWS TO ATTACH WALL BOARD / CEILING BOARD / PLYWOOD COVER TO STUDS, AS WELL AS TOP AND BOTTOM PLATES.
- AROUND SINK CUPBOARD STATION, PROVIDE ADDITIONAL LAYER OF MOISTURE RESISTANT OSB TO FACE OF WALL ASSEMBLY, SUITED FOR BACKSPLASH INSTALLATION (AS NOTED ON PLANS). WALL ASSEMBLY BEHIND TO MAINTAIN INTEGRITY AS SPECIFIED IN WALL TYPES SCHEDULE.
- WHERE A WALL IS MADE UP OF DIFFERENT PARTITION TYPES, PROVIDE RESILIENT CHANNEL (IF REQUIRED) & ADDITIONAL LAYER OF GYPSUM BOARD (IF REQUIRED), SO THAT FINISHED GYPSUM BOARD FACE IS SMOOTH, ALIGNED & CONTINUOUS UNLESS NOTED OTHERWISE.
- NON-COMBUSTIBLE MINERAL WOOL INSULATION TO BE USED THROUGHOUT.
- ADDITIONAL ACOUSTIC INSULATION TO BE INSTALLED AT ALL PLUMBING AND FAN COIL WALL LOCATIONS.

WINDOW NOTES:

- DESIGN WINDOWS TO NBC AND CSA STANDARDS FOR WINDOWS: WATER TIGHTNESS B3 & WIND-LOAD RESISTANCE C3.
- DESIGN WINDOWS TO MEET OR EXCEED NECB DIVISION B 3.1 REQUIREMENTS FOR GLAZED FENESTRATION
- CONFIRM EACH & INDIVIDUAL ROUGH OPENING ON SITE PRIOR TO FABRICATION.
- CONFIRM ALL UNIT WINDOWS WITH BUILDING ELEVATIONS.
- ALL WINDOWS TO BE MIN. DOUBLE GLAZING C/W LOW E COATING AND ARGON FILLED.
- APPLY SF9 ACE SECURITY LAMINATE OR APPROVED EQUIVALENT TO ALL GLAZING UNITS WIDER THAN 150mm TYPICAL.

EXTERIOR WALL TYPES SCHEDULE

No.	ILLUSTRATION	ASSEMBLY (from exterior to interior)
W1		EXTERIOR WALL TYPE 1 -WOOD FIBRE SIDING -19 x 67 WOOD STRAPPING @ 400mm O.C. VERTICALLY -Z-BARS SPACED @ 1200mm O.C. HORIZONTALLY -75mm RIGID INSULATION -AIR/VAPOUR BARRIER MEMBRANE -13mm OSB SHEATHING -38 x 140 WOOD STUDS @ 400mm O.C. -13mm GYPSUM BOARD

FLOOR ASSEMBLY TYPES SCHEDULE

No.	ILLUSTRATION	ASSEMBLY
F01		CONCRETE FLOOR -REINFORCED CONCRETE SLAB, REFER TO STRUCT. DWGS -10mil POLY VAPOUR BARRIER, SEALED TO EXISTING -50mm RIGID INSULATION (R8.5) -CRUSHED GRAVEL BASE C/W DRAINAGE SYSTEM

INTERIOR PARTITION TYPES SCHEDULE

No.	ILLUSTRATION	ASSEMBLY
P1		INTERIOR PARTITION TYPE 1 -LOAD BEARING - TO U/S OF TRUSS CHORD -GYPSUM BOARD TO U/S OF TRUSSES -13mm GYPSUM BOARD
P1b		INTERIOR PARTITION TYPE 1 -LOAD BEARING - TO U/S OF TRUSS CHORD -GYPSUM BOARD TO U/S OF TRUSSES -13mm GYPSUM BOARD -38 x 140 WOOD STUDS @ 400mm O.C. -140mm BATT INSULATION - SURROUNDING THIS ROOM ONLY -13mm GYPSUM BOARD
P2		MODIFIED EXISTING WALL -REMOVE EXISTING WOOD FIBRE SIDING -REMOVE EXISTING WOOD STRAPPING -REMOVE EXISTING Z-BARS -REMOVE EXISTING RIGID INSULATION -REMOVE EXISTING AIR/VAPOUR BARRIER MEMBRANE -REMOVE EXISTING OSB SHEATHING -NEW 13mm GYPSUM BOARD -EXISTING 38 x 140 WOOD STUDS @ 400mm O.C. -EXISTING AIR SPACE -EXISTING CONCRETE BLOCK, REINFORCED & CORE FILLED

ROOF TYPES SCHEDULE

No.	ILLUSTRATION	ASSEMBLY (from top to bottom)
R1		ROOF ASSEMBLY TYPE 1 -2 PLY SBS ROOFING MEMBRANE -25mm FIBRE BOARD -RIGID INSULATION (REFER TO ROOF PLAN FOR SLOPES) -VAPOUR BARRIER MEMBRANE -19mm T & G PLYWOOD SHEATHING -FLAT TRUSS (REFER TO STRUCTURAL) -13mm GYPSUM BOARD TO U/S OF TRUSS

DATE	ISSUED FOR	REV
2018-02-07	ISSUED FOR 60% REVIEW	
2018-02-14	ISSUED FOR DP	
2018-03-02	ISSUED FOR 95% REVIEW	
2018-03-29	ISSUED FOR TENDER	

This drawing has been prepared solely for the use of the CLIENT and there are no representations of any kind made by NORR Architects Engineers Planners to any party with whom NORR Architects Engineers Planners has not entered into a contract.

This drawing shall not be used for construction purposes until the seal appearing hereon is signed and dated by the Architect or Engineer.

Project Component
LUNCHROOM EXPANSION

Keyplan

Consultants

Architectural: NORR Architects Engineers Planners
Structural: NORR Architects Engineers Planners
Mechanical: NORR Architects Engineers Planners
Electrical: NORR Architects Engineers Planners

Seal(s)

NORR

2300, 411 - 1st Street SE,
Calgary, AB Canada T2G 4Y5
norr.com

NORR ARCHITECTS ENGINEERS PLANNERS
A Partnership of Limited Companies

FOR INFORMATION: ARCHITECT: AEA, B.Arch, M.Arch
ENGINEER: M.Eng, P.Eng, M.Eng, P.Eng, M.Eng, P.Eng
MECHANICAL: M.Eng, P.Eng, M.Eng, P.Eng
ELECTRICAL: M.Eng, P.Eng, M.Eng, P.Eng
CONSULTANT: M.Eng, P.Eng, M.Eng, P.Eng

Project Manager	Drawn
D. HIDER	
Project Leader	Checked
D. HIDER	

Client

RCMP

Project
**INNISFAIL PDSTC
LUNCHROOM EXPANSION**

Drawing Title
**GENERAL NOTES &
BUILDING CONSTRUCTION TYPES
& WINDOW SCHEDULE**

Check Scale (may be photo reduced)
0 1inch 0 10mm

Project No.
NCCA17-0228

Drawing No.
A00-01-02

PLOT DATE: March 28, 2018 TIME: 12:51 PM FULL PATH AND FILENAME: P:\RCMP_PROJECTS\NCCA17-0228 - RCMP - DTF LUNCHROOM EXPANSION\500-DELIVARCH_PROD\SHEETS\A01-00-01.DWG PLOTSTYLE TABLE: PMA-STD-100.ctb



01 LIFE SAFETY PLAN - MAIN FLOOR
A01-00-01 1:200

BUILDING CODE REVIEW:		SPECIFIC CODE ARTICLE	
REVIEW BASED ON 2015 NATIONAL BUILDING CODE - THE FOLLOWING NOTES PROVIDE INFORMATION HIGHLIGHTING BUILDING DESIGN CRITERIA. IT IS NOT INTENDED TO DESCRIBE ALL DESIGN & CONSTRUCTION REQUIREMENT. ALL CONSTRUCTION SHALL CONFIRM TO ALL APPLICABLE SECTIONS OF THE BUILDING CODE. - CONSTRUCTED UNDER PART "3" OF BUILDING CODE			
GENERAL INFORMATION			
BUILDING AREA:	746.01 sq.m		
BUILDING HEIGHT:	1 STOREYS ABOVE GRADE 0 LEVEL OF PARKADE BELOW GRADE		
MEZZANINE AND OPENINGS THROUGH FLOOR ASSEMBLIES			
- APPLICATION FOR SPECIAL PROTECTION FOR MEZZANINE AND INTERCONNECTED FLOOR SPACE	3.2.8	CONFIRMING TO ARTICLE ABC 3.2.8.2.	
MAJOR OCCUPANCY			
A) GROUP/DIV.	D BUSINESS AND PERSONAL SERVICES	1 STOREY	
SIZE AND CONSTRUCTION RELATIVE TO OCCUPANCY			
A) GROUP D		3.2.2.62	
1) a) NOT MORE THAN 2 STOREYS		1 STOREY	
b) BUILDING AREA NOT MORE THAN 1000 sq. m		746.01 sq.m	
LOCATION OF ACCESS ROUTE & PROVISION FOR FIRE FIGHTING			
- PRINCIPAL ENTRANCE AND EVERY ACCESS OPENING ARE LOCATED MIN. 3m, & MAX. 15m FROM CLOSEST PORTION OF THE ACCESS ROUTE	3.2.5.5.(1)		
- IF FIRE DEPARTMENT CONNECTION IS PROVIDED, MAX. 45m FROM FIRE DEPARTMENT CONNECTION TO HYDRANT	3.2.5.15.		
- IF FIRE DEPARTMENT CONNECTION IS NOT PROVIDED, MAX. 90m FROM HYDRANT TO VEHICLE PLUS UNOBSTRUCTED PATH OF TRAVEL	3.2.5.5.(2) (b)		
- ACCESS ROUTE DESIGN CONFIRMING TO ARTICLE ABC 3.2.5.6.	3.2.5.6.		
OCCUPANCY LOAD BY LEVEL / ROOM			
- LEVEL 1 OFFICES	746.01 sq.m, @ 9.30 sq.m. / PERSON = 81 PERSONS	3.1.17.1	
- POSTED MAXIMUM OCCUPANCY AS STATED BY OWNER = 25 PERSONS			
ACCESS TO EXIT AND LOCATION			
LEVEL / ROOM	MIN. 2 EGRESS DOORWAY 3.3.1.5	CORRIDOR WIDTH (mm) 3.3.1.9 / 3.3.1.17	MAX. TRAVEL DIST. (m) 3.4.2.5
	REQUIRED	PROVIDED	REQUIRED
MAIN FLR	2	3	40m
		(MIN. 1100)	37.3m
EXIT WIDTH			3.4.3.2
FLOOR	OCCUPANT LOAD	REQUIRED (mm)	PROVIDED (mm)
		EXIT CORR.	STAIRS
MAIN FLR.	25	(MIN. 1100)	(MIN. 900)
		(MIN. 800)	1500mm
			N/A
			900mm
HEADROOM CLEARANCE			
- EXITS (STAIRS & LANDING)	2050mm (MIN. 2050mm)		3.4.3.4 (1)
- DOORWAYS	2030mm (MIN. 2030mm)		3.4.3.4 (4)
FIRE SEPARATION			
- PUBLIC CORRIDOR	45min F.R.R.		3.3.1.4 (2)
- SERVICE ROOM	1 hr F.R.R.		3.6.2.1 (1)
- STORAGE ROOM	45min F.R.R.		3.3.4.3 (3)
- JANITOR'S ROOM	45min F.R.R.		3.3.1.21 (2)
FIRE CLOSURES			3.1.8.4.
F.R.R. OF FIRE SEPARATION	RATING OF CLOSURE		
45 min. (0.75 hr)	45 min. (0.75 hr)		
60 min. (1.00 hr)	45 min. (0.75 hr)		
90 min. (1.50 hr)	60 min. (1.00 hr)		
120 min. (2.00 hr)	90 min. (1.50 hr)		
20 MINUTE DOOR A DOOR ASSEMBLY HAVING A FIRE-PROTECTION RATING OF NOT LESS THAN 20 min. IS PERMITTED TO BE USED AS A CLOSURE IN A FIRE SEPARATION NOT REQUIRED TO HAVE A FIRE RESISTANCE RATING MORE THAN 1 hr LOCATED BETWEEN A CORRIDOR AND A SUITE.			3.1.8.10.(1)
TEMPERATURE RISE LIMIT FOR DOORS			3.1.8.15.
- ALL STAIRWELL DOORS AND ELEVATOR ACCESS AREAS SHALL BE INSTALLED WITH A TRANSPARENT PANEL FOR VISIBILITY BY CITY BYLAW. DESIGN OF RESTRICTED GLAZING AREA FOR FIRE CLOSURES CONFIRMING TO ARTICLE 3.1.8.15.			
BARRIER-FREE DESIGN REQUIREMENTS			
- BARRIER-FREE PARKING STALLS REQUIRED ## STALLS			3.8.2.2.
- DOORWAYS THAT IS LOCATED IN A BARRIER-FREE PATH OF TRAVEL SHALL HAVE A CLEAR WIDTH NOT LESS THAN 850mm IN OPEN POSITION			3.8.3.3.
- COMPLY WITH THE BARRIER FREE RAMP DESIGN TO ARTICLE 3.8.3.4.			3.8.3.4.
FIRE ALARM & DETECTION SYSTEM			
- REQUIRE FIRE ALARM SYSTEM IN AN AUTOMATIC SPRINKLER SYSTEM			3.2.4.1.
- FIRE ALARM SYSTEM TO BE A SINGLE- OR 2-STAGE SYSTEM			3.2.4.3.
- REQUIRE FIRE DETECTOR TO BE CONNECTED TO THE FIRE ALARM SYSTEM			3.2.4.11.
- REQUIRE TO SIGNAL TO FIRE DEPARTMENT			3.2.4.8.
- REQUIRE ANNUNCIATOR TO AND ZONE INDICATION			3.2.4.9.
- REQUIRED SMOKE DETECTOR IN PUBLIC CORRIDOR FOR GROUP C			3.2.4.12.
- REQUIRED SMOKE ALARM IN SUITE			3.2.4.22.(7)
- NOT REQUIRED VOICE COMMUNICATION SYSTEMS			3.2.4.22.(7)
FLAME SPREAD RATING AND SMOKE DEVELOPED CLASSIFICATION			3.1.12.1
WASHROOM FACILITIES			
- MINIMUM NUMBER OF WATER CLOSETS FOR EACH SEX - 1			3.7.2.2.12

DATE	ISSUED FOR	REV
2018-02-07	ISSUED FOR 60% REVIEW	
2018-02-14	ISSUED FOR DP	
2018-03-02	ISSUED FOR 95% REVIEW	
2018-03-29	ISSUED FOR TENDER	

This drawing has been prepared solely for the use of the CLIENT and there are no representations of any kind made by NORR Architects Engineers Planners to any party with whom NORR Architects Engineers Planners has not entered into a contract.

This drawing shall not be used for construction purposes until the seal appearing hereon is signed and dated by the Architect or Engineer.

Project Component
LUNCHROOM EXPANSION

Keyplan

Consultants

Architectural: NORR Architects Engineers Planners
Structural: NORR Architects Engineers Planners
Mechanical: NORR Architects Engineers Planners
Electrical: NORR Architects Engineers Planners

Seal(s)

NORR

2300, 411 - 1st Street SE,
Calgary, AB Canada T2G 4Y5
norr.com

NORR ARCHITECTS ENGINEERS PLANNERS
A Partnership of Limited Companies

FOR INFORMATION PURPOSES ONLY - NOT A CONTRACT DOCUMENT
NORR is a registered member of the International Brotherhood of Firefighters

Viktor Stehli, Architect, AIA, B.Arch, M.Arch
Bruce G. Macdonald, Architect, AIA, M.Arch, M.A.S.C.
A. Brian Robertson, Architect, AIA, B.Arch, M.A.S.C.
Arlene Trudell, P.Eng., APEGA
Chris P. King, APEGA

Project Manager	Drawn
D. HIDER	Initial.LastName
Project Leader	Checked
D. HIDER	Initial.LastName

Client
RCMP

Project
INNISFAIL PDSTC LUNCHROOM EXPANSION

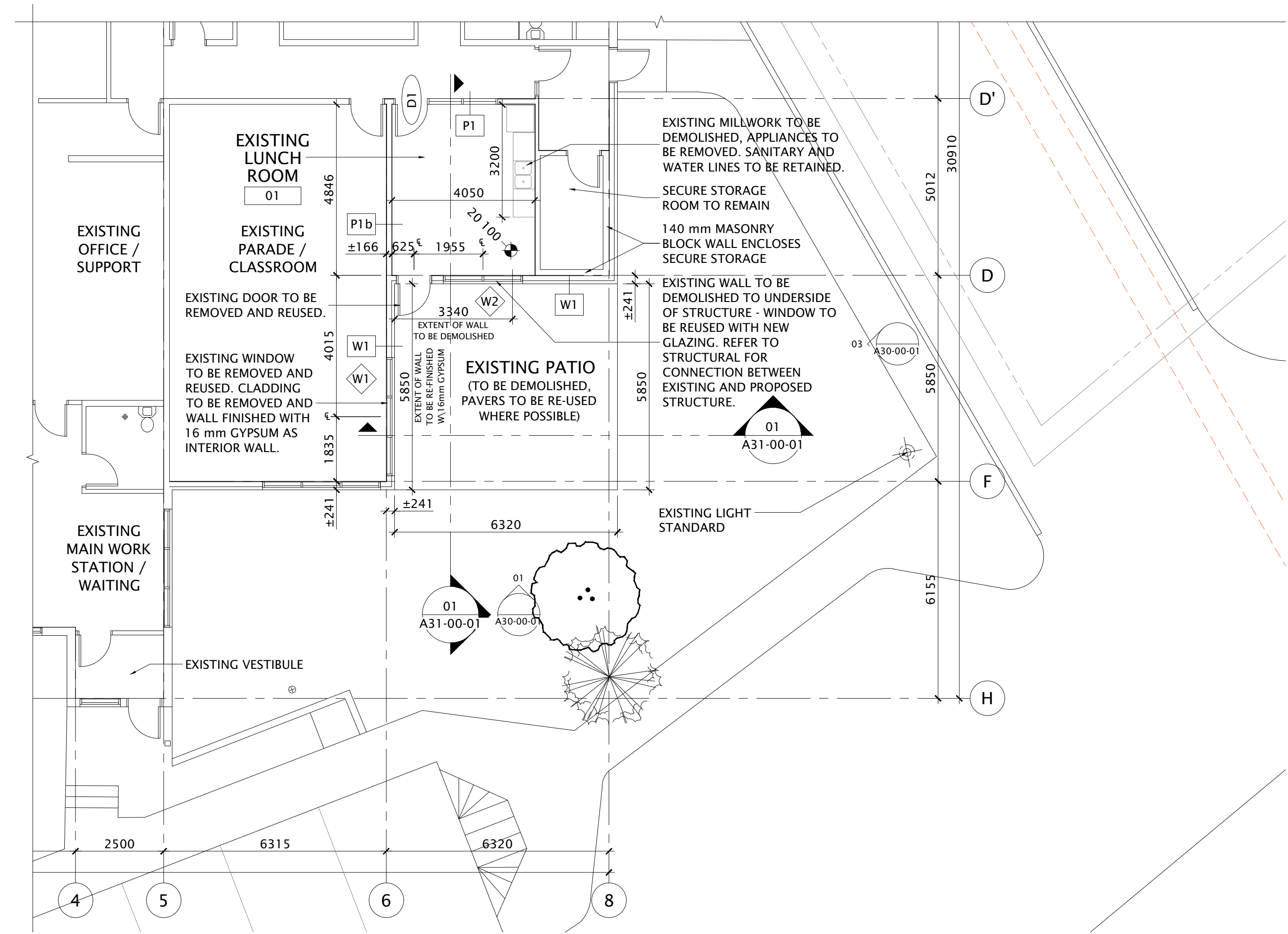
Drawing Title
BUILDING CODE REVIEW & LIFE SAFETY PLAN

Check Scale (may be photo reduced)
0 1inch 0 10mm

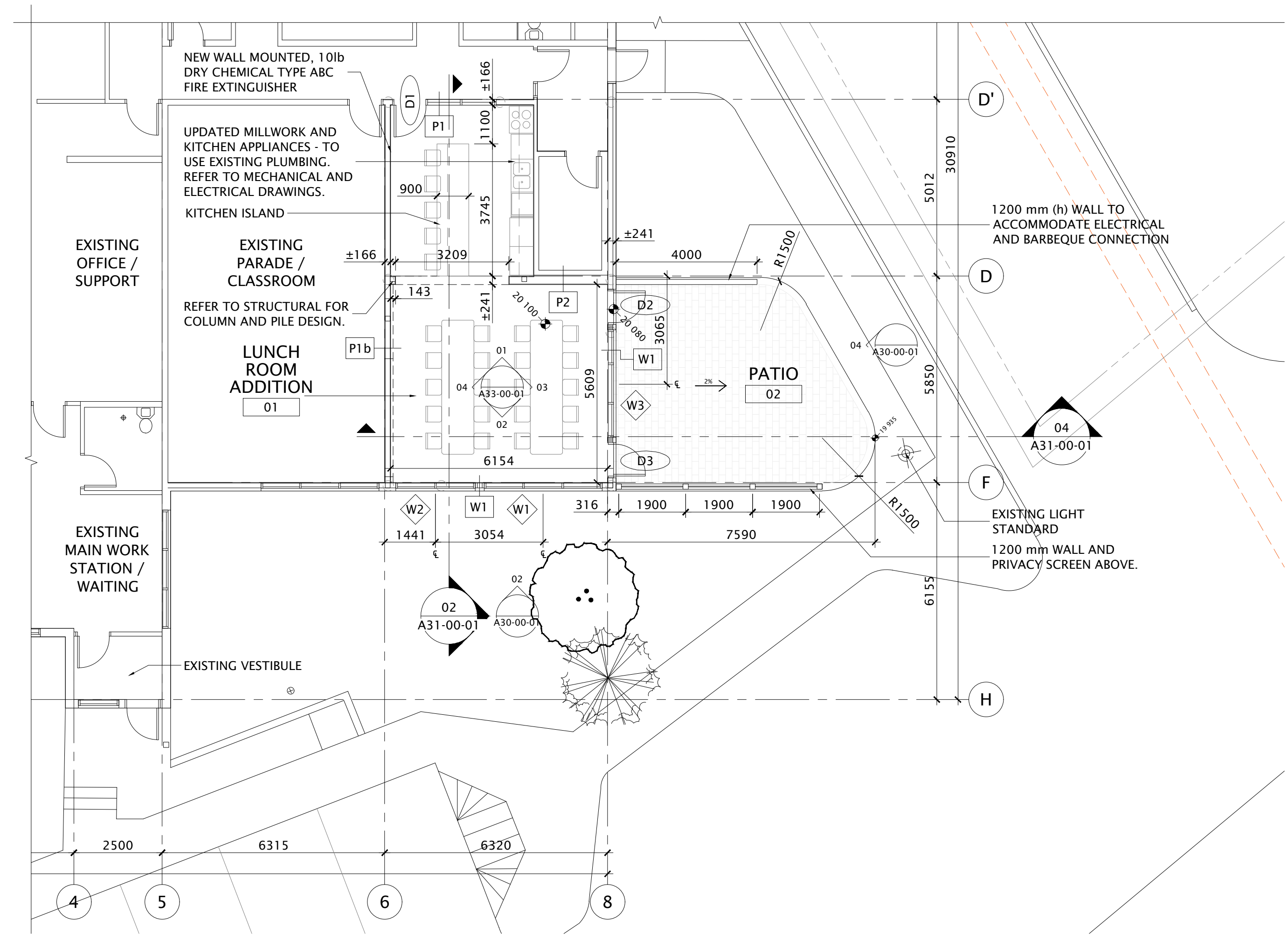
Project No. **NCCA17-0228**

Drawing No. **A01-00-01**

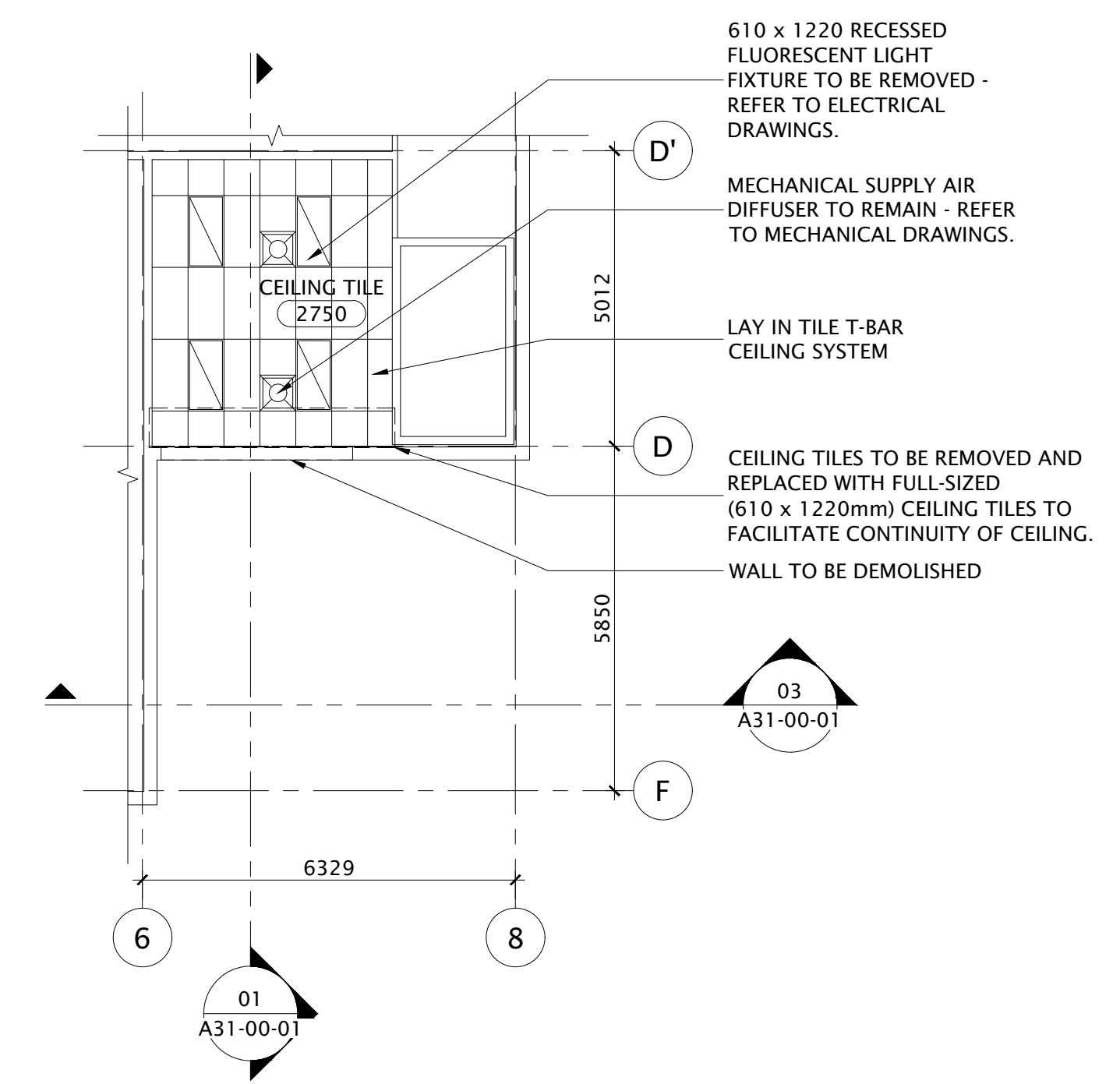
DATE	ISSUED FOR	REV
2018-02-07	ISSUED FOR 60% REVIEW	
2018-02-14	ISSUED FOR DP	
2018-03-02	ISSUED FOR 95% REVIEW	
2018-03-29	ISSUED FOR TENDER	



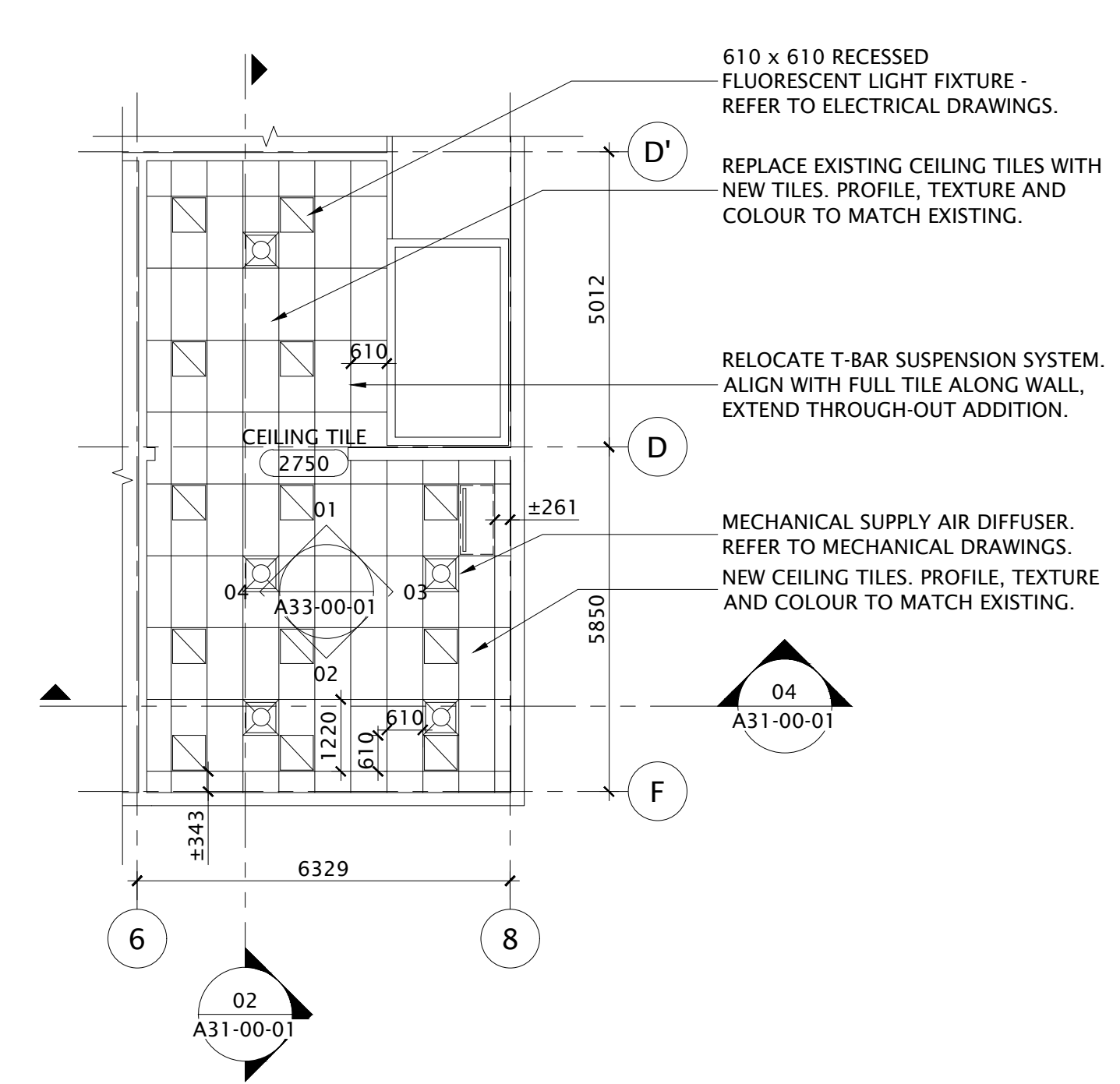
01
EXISTING FLOOR PLAN
INNISFAIL PDSTC LUNCHROOM EXPANSION
 1:100
 A20-00-01



02
PROPOSED FLOOR PLAN
INNISFAIL PDSTC LUNCHROOM EXPANSION
 1:100
 A20-00-01



03
EXISTING REFLECTED CEILING PLAN
INNISFAIL PDSTC LUNCHROOM EXPANSION
 1:100
 A20-00-01



04
PROPOSED REFLECTED PLAN
INNISFAIL PDSTC LUNCHROOM EXPANSION
 1:100
 A20-00-01

This drawing has been prepared solely for the use of the CLIENT and there are no representations of any kind made by NORR Architects Engineers Planners to any party with whom NORR Architects Engineers Planners has not entered into a contract.
 This drawing shall not be used for construction purposes until the seal appearing hereon is signed and dated by the Architect or Engineer.

Project Component
LUNCHROOM EXPANSION
 Keyplan

Consultants
 Architectural: NORR Architects Engineers Planners
 Structural: NORR Architects Engineers Planners
 Mechanical: NORR Architects Engineers Planners
 Electrical: NORR Architects Engineers Planners

Seal(s)

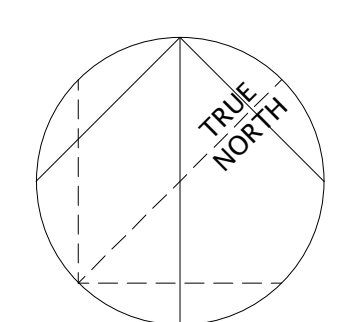
NORR
 2300, 411 - 1st Street SE,
 Calgary, AB Canada T2G 4Y5
 norr.com
 NORR ARCHITECTS ENGINEERS PLANNERS
 A Partnership of Limited Companies
Equal Opportunity Employer/Contractor. Post Secondary Education 90%
 NORR is a registered provider of training under the work-learn-earn program.
 Victor Smith, Architect, A.A.A., R.Arch., M.A.M.C.
 Bruce G. MacKinnon, Architect, A.A.A., M.Arch., M.A.M.C.
 A. Shariq Siddiqui, Architect, A.A.A., R.Arch., M.A.M.C.
 Adam Tordella, P.Eng., A.P.E.G.A.
 Chris Peir, P.Eng., A.P.E.G.A.

Project Manager	Drawn
D. HIDER	
Project Leader	Checked
D. HIDER	
Client	RCMP

Project
INNISFAIL PDSTC LUNCHROOM EXPANSION

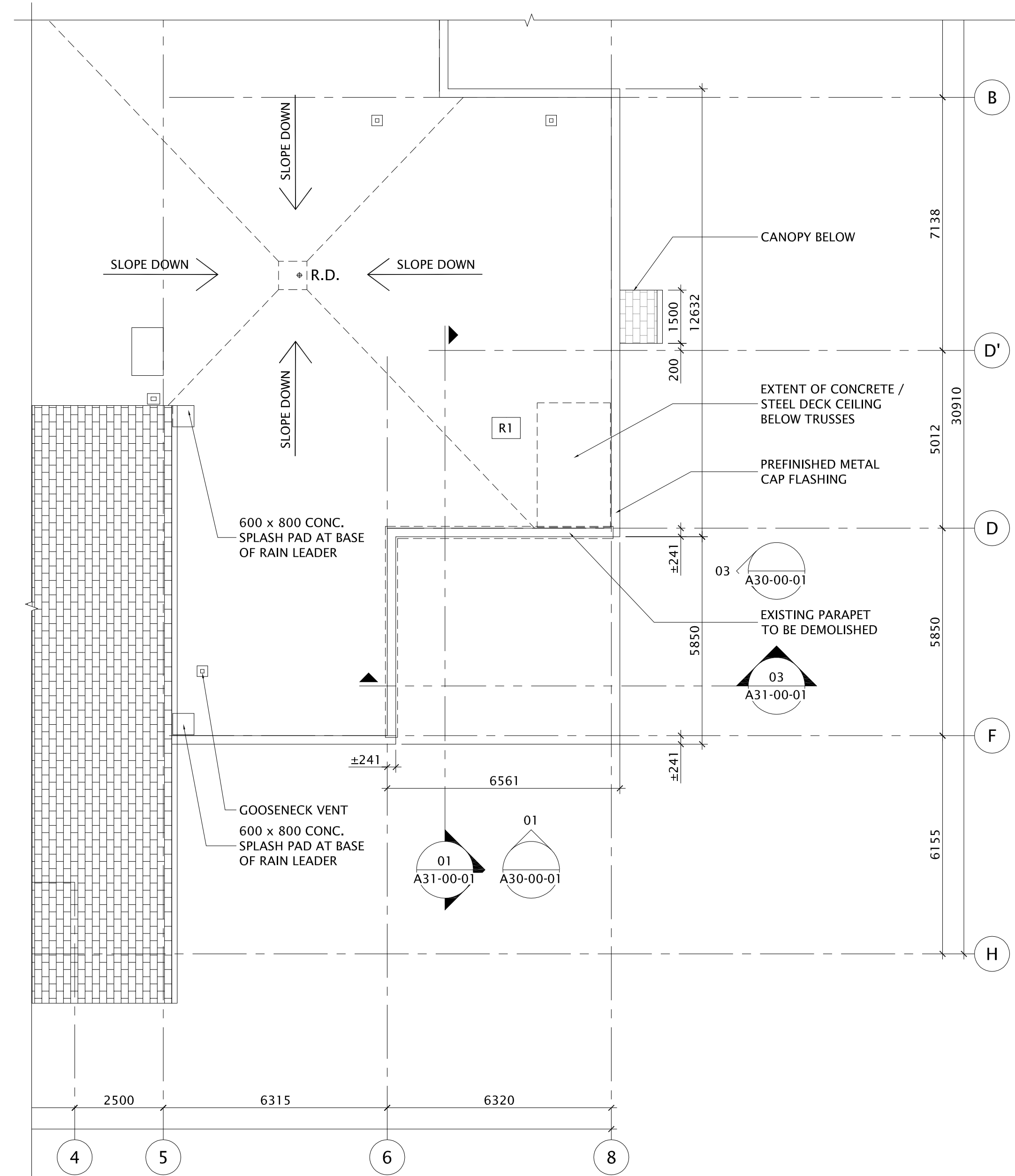
Drawing Title
PLANS
FLOOR PLANS
REFLECTED CEILING PLANS

Check Scale (may be photo reduced)
 0 1inch 0 10mm
 Project No. **NCCA17-0228**
 Drawing No. **A20-00-01**

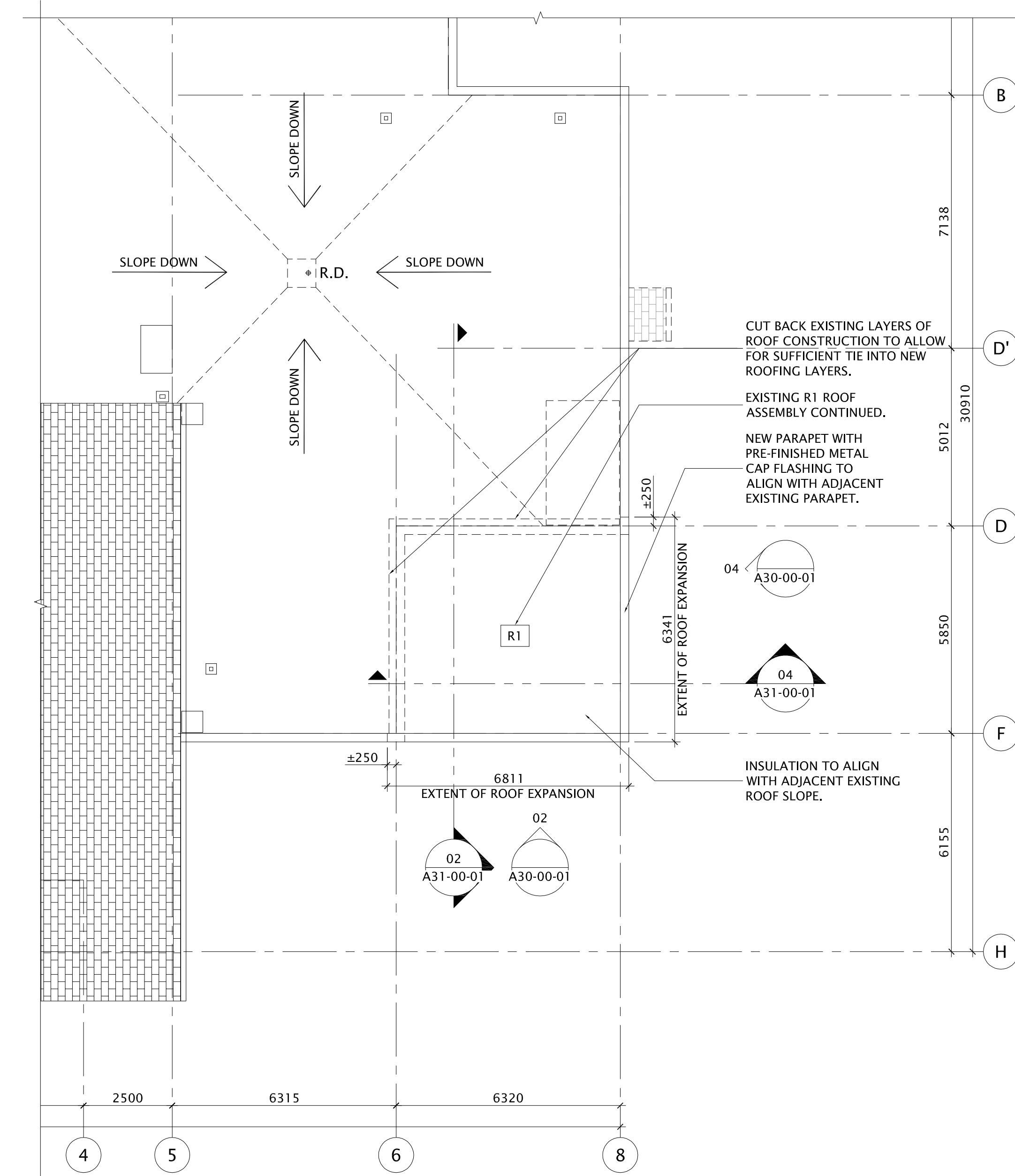


PLOT DATE: March 29, 2018 TIME: 2:35 PM FULL PATH AND FILENAME: P:\RCMP_PROJECTS\NCCA17-0228 - RCMP - DTF LUNCHROOM EXPANSION\500-DELIV\ARCH_PROD\SHEETS\A20-00-01.DWG PLOTS\TABLE_PMA-STD-100.cab

PLOT DATE: March 28, 2018 TIME: 12:51 PM FULL PATH AND FILENAME: P:\RCMP_PROJECTS\NCCA17-0228 - RCMP - DTF LUNCHROOM EXPANSION\500-DELIVARCH_PROD\SHEETS\A20-01-01.DWG PLOTSTYLE TABLE: PMA-STD-100.ctb



01
A20-01-01 1:100
**EXISTING ROOF PLAN
INNISFAIL PDSTC LUNCHROOM EXPANSION**



02
A20-01-01 1:100
**PROPOSED ROOF PLAN
INNISFAIL PDSTC LUNCHROOM EXPANSION**

DATE	ISSUED FOR	REV
2018-02-07	ISSUED FOR 60% REVIEW	
2018-02-14	ISSUED FOR DP	
2018-03-02	ISSUED FOR 95% REVIEW	
2018-03-29	ISSUED FOR TENDER	

This drawing has been prepared solely for the use of the CLIENT and there are no representations of any kind made by NORR Architects Engineers Planners to any party with whom NORR Architects Engineers Planners has not entered into a contract.
This drawing shall not be used for construction purposes until the seal appearing hereon is signed and dated by the Architect or Engineer.

Project Component
LUNCHROOM EXPANSION
Keyplan

Consultants
Architectural: NORR Architects Engineers Planners
Structural: NORR Architects Engineers Planners
Mechanical: NORR Architects Engineers Planners
Electrical: NORR Architects Engineers Planners

Seal(s)

NORR
2300, 411 - 1st Street SE,
Calgary, AB Canada T2G 4Y5
norr.com
NORR ARCHITECTS ENGINEERS PLANNERS
A Partnership of Limited Companies
NORR is a registered provider for the Alberta Health Services.
Victor Stehli, Architect, A.A.A., B.Arch, M.A.S.C.
Bruce G. Macdonald, Architect, A.A.A., M.A.S.C., M.A.M.C.
A. Shaheed, Structural Engineer, A.A.A., B.A.S.C., M.A.S.C.
Ariane Tremblay, P.Eng., A.P.E.G.A.
Chris P. P. Eng., A.P.E.G.A.

Project Manager D. HIDER	Drawn
Project Leader D. HIDER	Checked

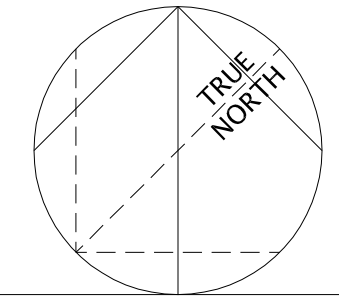
Client
RCMP

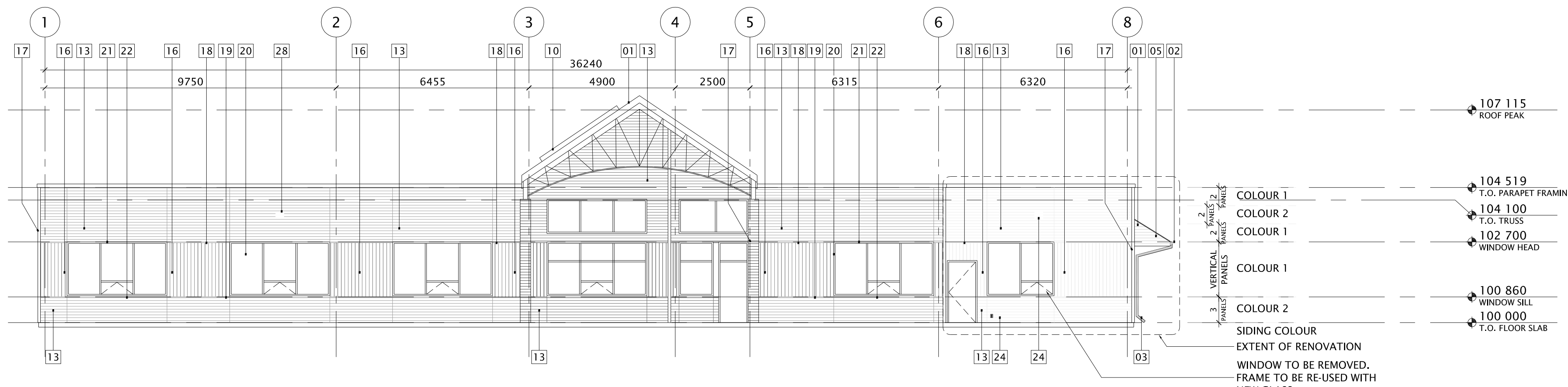
Project
**INNISFAIL PDSTC
LUNCHROOM EXPANSION**

Drawing Title
**ROOF PLANS
EXISTING & PROPOSED**

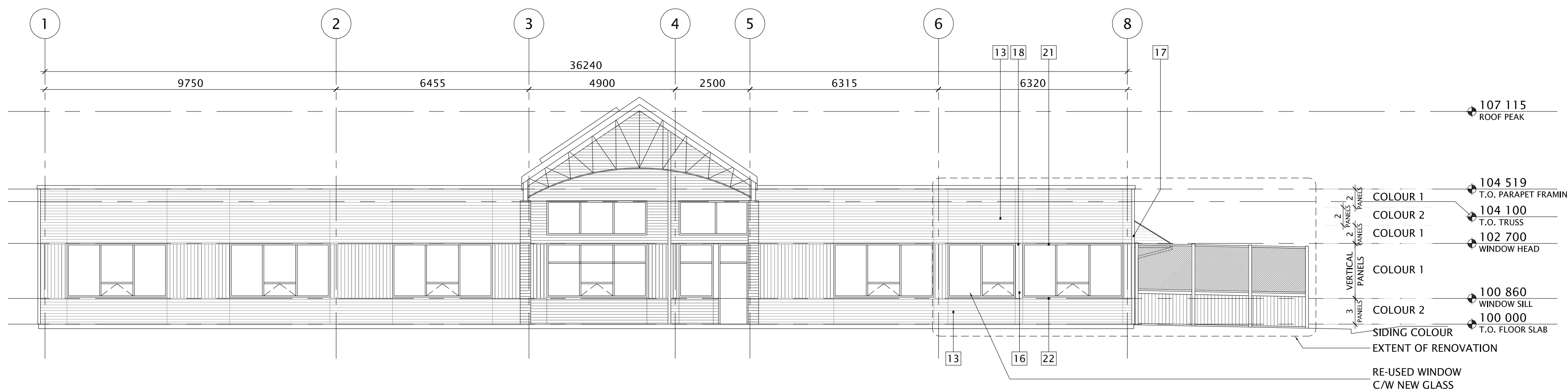
Check Scale (may be photo reduced)
0 1inch 0 10mm

Project No. **NCCA17-0228**
Drawing No. **A20-01-01**

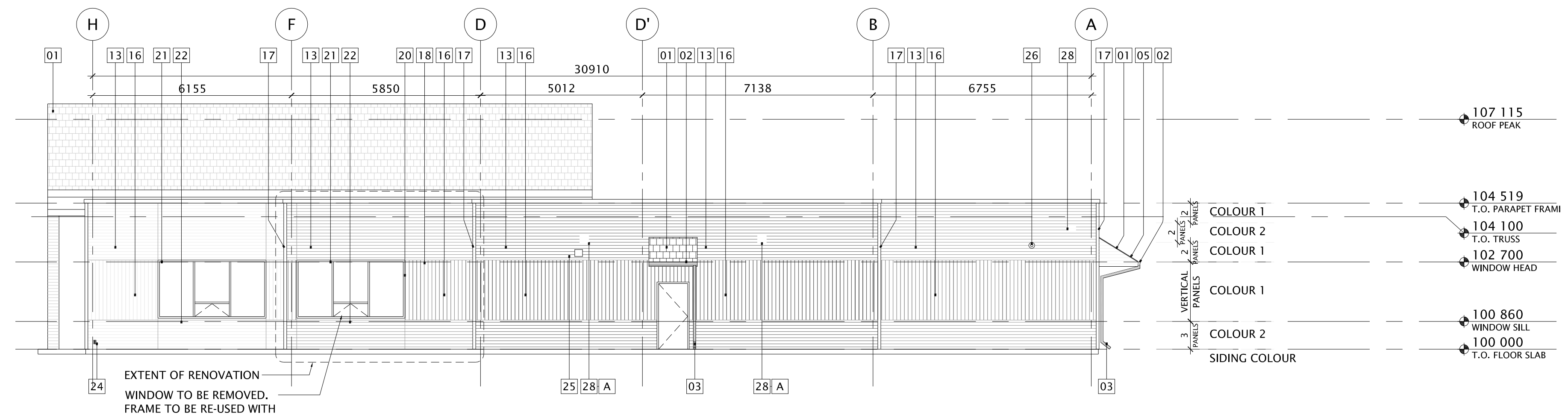




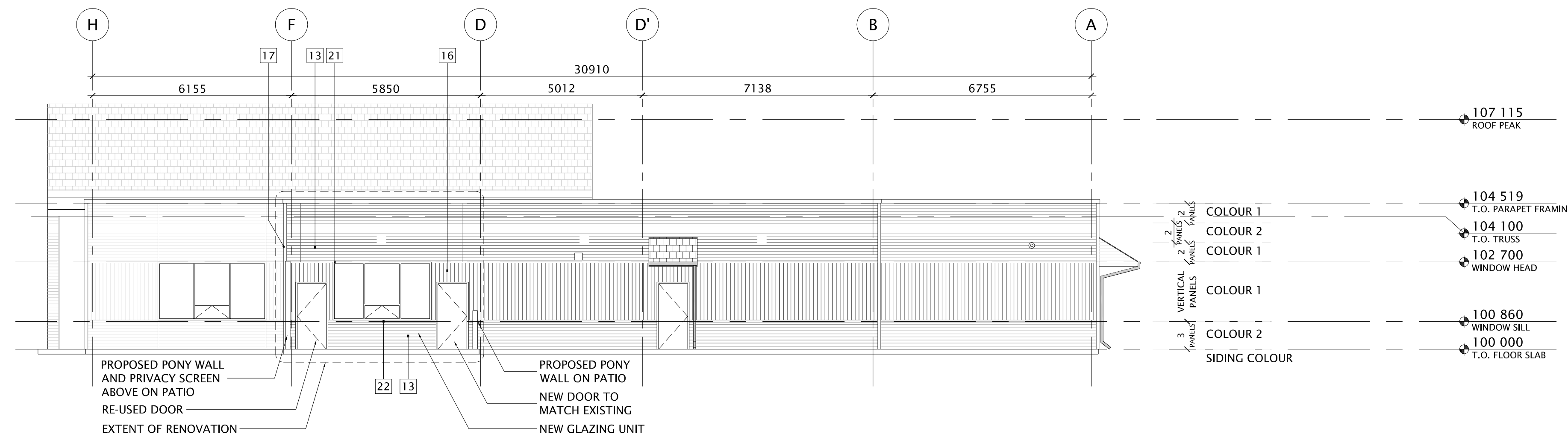
01
A30-00-01
EXISTING NORTH ELEVATION
INNISFAIL PDSTC LUNCHROOM EXPANSION
1:100



02
A30-00-01
PROPOSED NORTH ELEVATION
INNISFAIL PDSTC LUNCHROOM EXPANSION
1:100



03
A30-00-01
EXISTING WEST ELEVATION
INNISFAIL PDSTC LUNCHROOM EXPANSION
1:100



04
A30-00-01
PROPOSED WEST ELEVATION
INNISFAIL PDSTC LUNCHROOM EXPANSION
1:100

MATERIAL LEGEND	COLOUR	REMARKS
01 ASPHALT SHINGLES	BURGUNDY	
02 PRE-FINISHED METAL GUTTER	BURGUNDY	
03 PRE-FINISHED METAL DOWNSPOUT	BURGUNDY	LEADING TO CONCRETE SPLASH PAD.
04 PRE-FINISHED METAL TRIM	BURGUNDY	UNDER SIDING OVER SHINGLES.
05 PRE-FINISHED METAL CABLE WALL TRIM	BURGUNDY	UNDER SHINGLES OVER SIDING.
06 PRE-FINISHED METAL CABLE END TRIM	BURGUNDY	WRAPPED AROUND END OF METAL DECK.
07 STRUCTURAL BEAM		ENCASED WITHIN PLYWOOD.
08 PRE-FINISHED OWSJ		AS ARCHITECTURAL ACCENT.
09 EXPOSED TO EXTERIOR STRUCTURAL BEAM.		PAINT TO MATCH METAL DECK ABOVE.
10 SKYLIGHT		
11 STRUCTURAL COLUMN	BURGUNDY	SUPPORTING CANOPY
12 PRE-FINISHED HORIZONTAL WOOD FIBRE SIDING	SEE ELEV. FOR COLOUR	TO BACK OF CANOPY. ALTERNATE JOINTS UNTIL FULL PIECE CAN SPAN.
13 PRE-FINISHED HORIZONTAL WOOD FIBRE SIDING	SEE ELEV. FOR COLOUR	ALL JOINTS TO LINE UP VERTICALLY.
14 PRE-FINISHED HORIZONTAL WOOD FIBRE SIDING	SEE ELEV. FOR COLOUR	TO SIDE OF CANOPY.
15 PRE-FINISHED HORIZONTAL WOOD FIBRE SIDING	SEE ELEV. FOR COLOUR	ALL JOINTS STAGGERED.
16 PRE-FINISHED VERTICAL WOOD FIBRE SIDING	SEE ELEV. FOR COLOUR	ABSOLUTELY NO JOINTS. TYPICAL.
17 PRE-FINISHED OUTSIDE CORNER POST	BURGUNDY	CONTINUOUS THROUGH HORIZONTAL AND VERTICAL TRANSITIONS. INSIDE CORNER POSTS AS WELL. TYPICAL.
18 PRE-FINISHED BELT LINE	BEIGE	TO TRANSITION FROM HORIZONTAL TO VERTICAL. TRANSITION PORTION TO LINE UP WITH WINDOW HEAD DRIP CAP.
19 PRE-FINISHED BELT LINE	BEIGE	TO TRANSITION FROM VERTICAL TO HORIZONTAL. BOTTOM OF BELT LINE TO BE 840mm ABOVE START OF SIDING.
20 PRE-FINISHED J-MOULDING	BURGUNDY	TO JAMBS OF ALL WINDOWS AND DOORS.
21 PRE-FINISHED DRIP CAP	BURGUNDY	OVER OPENING. TYPICAL OF ALL WINDOWS.
22 PRE-FINISHED WINDOW SILL FLASHING	BURGUNDY	ALWAYS SLOPING AWAY FROM WINDOW. TYP. ALL WINDOWS.
23 PRE-FINISHED J-MOULDING	BURGUNDY	TO HEAD OF DOOR OPENING, AS WELL AS JAMBS.
24 ELECTRICAL RECEPTACLE	BURGUNDY	MOUNTS 300mm A.F.F. APPLY J-MOULDING TRIM TO ALL 4 SIDES AND SEAL WITH CAULKING.
25 EXHAUST DUCT	BRUSHED ALUMINIUM	THROUGH WALL TO HOOD WITH SCREEN. APPLY J-MOULDING TRIM TO ALL 4 SIDES AND SEAL WITH CAULKING.
26 'B' VENT		THROUGH WALL C/W WALL CAP. CUT SIDING TO FIT TIGHT AND CAULK
27 PRE-FINISHED METAL LOUVRE		TO COLD AIR TRAP. APPLY J-MOULDING TRIM TO ALL 4 SIDES AND SEAL WITH CAULKING.
28 WALL MOUNTED LUMINAIRE	BURGUNDY	SEAL ANY PENETRATIONS THROUGH SIDING USING CAULKING. REFER TO ELECTRICAL.
28 A WALL MOUNTED LUMINAIRE	BURGUNDY	SEAL ANY PENETRATIONS THROUGH SIDING USING CAULKING. BOTTOM OF FIXTURE TO ALIGN WITH BOTTOM OF SIDING COLOUR BAND. REFER TO ELECTRICAL.
29 OUTLINE OF DECK FENCING		ENCASING ENTIRE CORNER.
30 CEMENTITIOUS BOARD	BURGUNDY (TBC)	HORIZONTAL ORIENTED TO A MINIMUM OF 300mm BELOW GRADE, ALONG ALL GRADE BEAMS. TYPICAL & CAULK ALL JOINTS.
31 DECK FRAMING CEMENTITIOUS BOARD		HORIZONTAL TO COVER BOTH LEVELS OF JOISTS.
32 CONCRETE PAD		ARCHITECTURALLY FINISHED.
33 PAINTED TUBULAR STEEL HANDRAIL		
34 RAIN WATER LEADER		
35 ALL TRIM AT BOTTOM OF LOWER WINDOWS TO MATCH 'COLOUR 1'	(TBC)	
36 'COLOUR 1' = BEIGE (PROPOSED TO MATCH EXISTING) 'COLOUR 2' = BURGUNDY (PROPOSED TO MATCH EXISTING)		

DATE	ISSUED FOR	REV
2018-02-07	ISSUED FOR 60% REVIEW	
2018-02-14	ISSUED FOR DP	
2018-03-02	ISSUED FOR 95% REVIEW	
2018-03-29	ISSUED FOR TENDER	

This drawing has been prepared solely for the use of the CLIENT and there are no representations of any kind made by NORR Architects Engineers Planners to any party with whom NORR Architects Engineers Planners has not entered into a contract.

This drawing shall not be used for construction purposes until the seal appearing hereon is signed and dated by the Architect or Engineer.

Project Component
LUNCHROOM EXPANSION

Keyplan

Consultants

Architectural: NORR Architects Engineers Planners
Structural: NORR Architects Engineers Planners
Mechanical: NORR Architects Engineers Planners
Electrical: NORR Architects Engineers Planners

Seal(s)

NORR

2300, 411 - 1st Street SE,
Calgary, AB Canada T2G 4Y5
norr.com

NORR ARCHITECTS ENGINEERS PLANNERS
A Partnership of Limited Companies

Victor Smith, Architect, A.A.A., B.Arch, M.A.S.C.
Bruce G. MacKinnon, Architect, A.A.A., M.A.S.C., M.A.S.T.P.
A. Brian Robertson, Architect, A.A.A., B.Arch, M.A.S.C.
Ardian Trumbo, P.Eng., A.P.E.G.A.
Chris P. P. Eng., A.P.E.G.A.

Project Manager	Drawn
D. HIDER	
Project Leader	Checked
D. HIDER	

Client
RCMP

Project
INNISFAIL PDSTC LUNCHROOM EXPANSION

Drawing Title
BUILDING ELEVATIONS

Check Scale (may be photo reduced)
0 1inch 0 10mm

Project No. **NCCA17-0228**
Drawing No. **A30-00-01**

PLOT DATE: March 28, 2018 TIME: 12:51 PM FULL PATH AND FILENAME: P:\RCMP_PROJECTS\NCCA17-0228 - RCMP - DTF LUNCHROOM EXPANSION\00-DELIVARCH_PROD\SHEETS\A30-00-01.DWG PLOTSTYLE TABLE: PMA-STD-100.ctb

PLOT DATE: March 28, 2018 TIME: 12:51 PM FULL PATH AND FILENAME: P:\RCMP_PROJECTS\NCCA17-0228 - RCMP - DTF LUNCHROOM EXPANSION\00-DELIVARCH_PROD\SHEETS\A31-00-01.DWG PLOTSYCLE TABLE: PMA-STD-100.rbt

DATE	ISSUED FOR	REV
2018-02-07	ISSUED FOR 60% REVIEW	
2018-02-14	ISSUED FOR DP	
2018-03-02	ISSUED FOR 95% REVIEW	
2018-03-29	ISSUED FOR TENDER	

This drawing has been prepared solely for the use of the CLIENT and there are no representations of any kind made by NORR Architects Engineers Planners to any party with whom NORR Architects Engineers Planners has not entered into a contract.

This drawing shall not be used for construction purposes until the seal appearing hereon is signed and dated by the Architect or Engineer.

Project Component
LUNCHROOM EXPANSION
 Keyplan

Consultants
 Architectural: NORR Architects Engineers Planners
 Structural: NORR Architects Engineers Planners
 Mechanical: NORR Architects Engineers Planners
 Electrical: NORR Architects Engineers Planners

Seal(s)

NORR
 2300, 411 - 1st Street SE,
 Calgary, AB Canada T2G 4Y5
 norr.com

NORR ARCHITECTS ENGINEERS PLANNERS
 A Partnership of Limited Companies
 NORR is a registered member of the International Brotherhood of Architects and Engineers (I.B.A.E.)

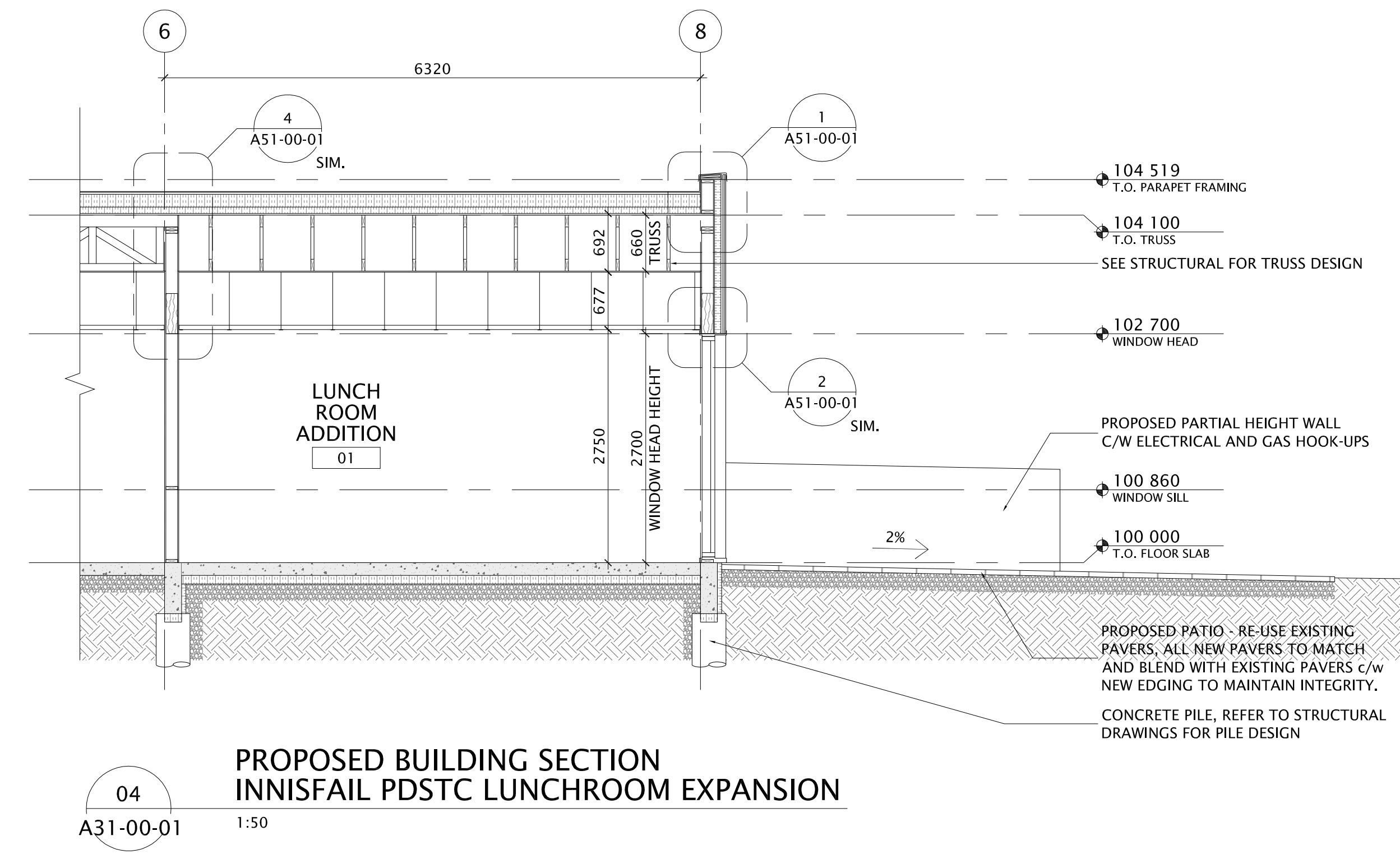
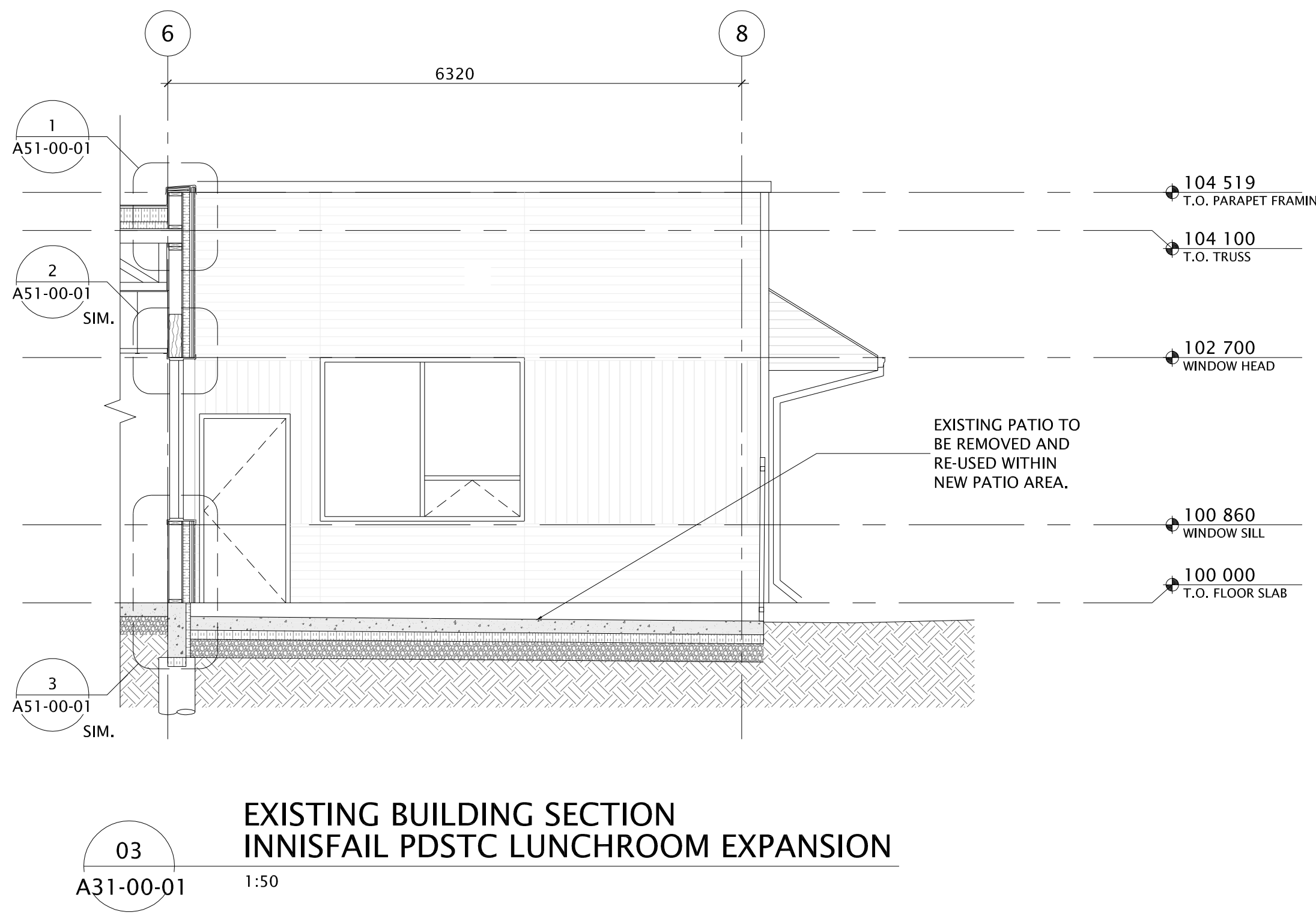
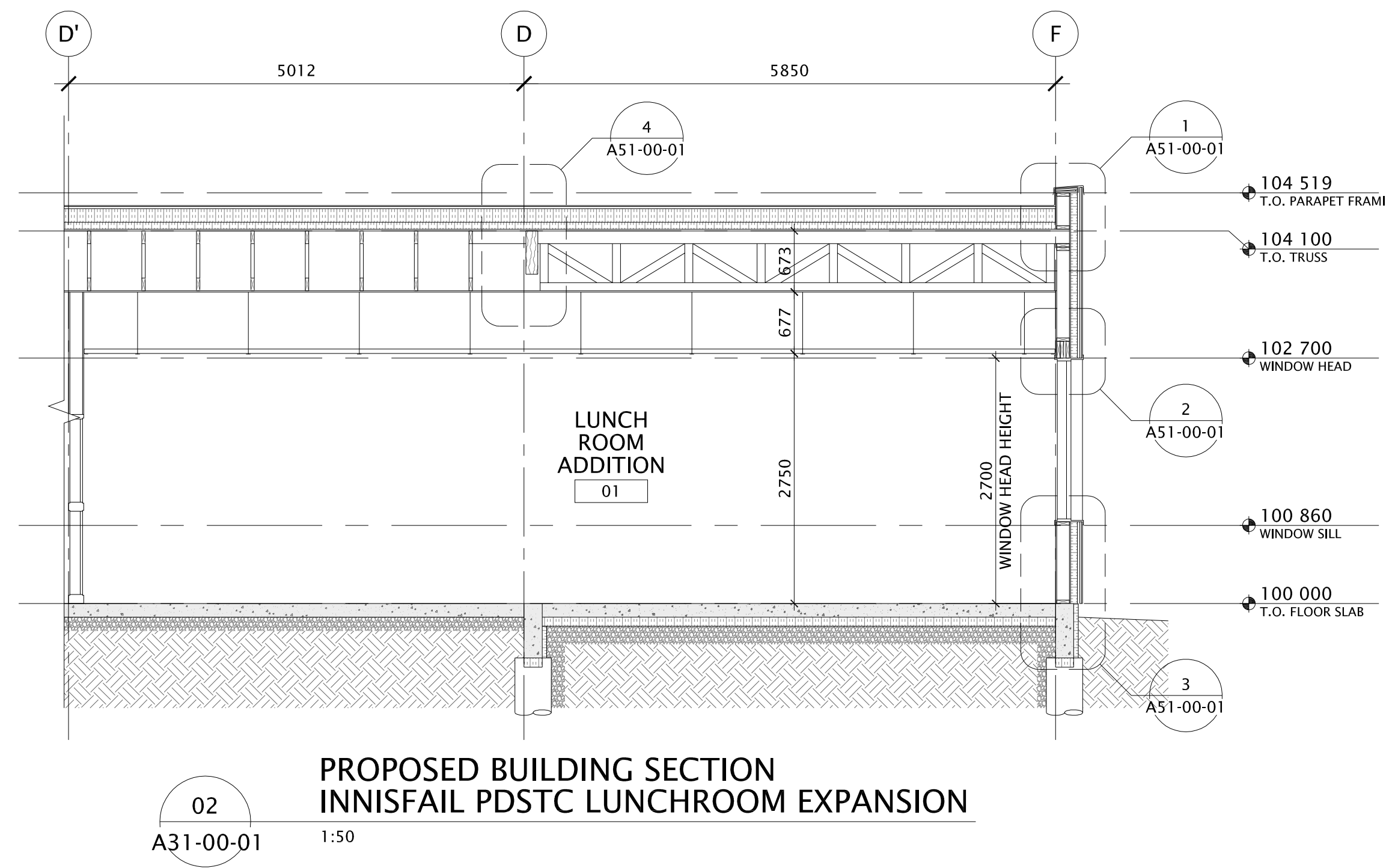
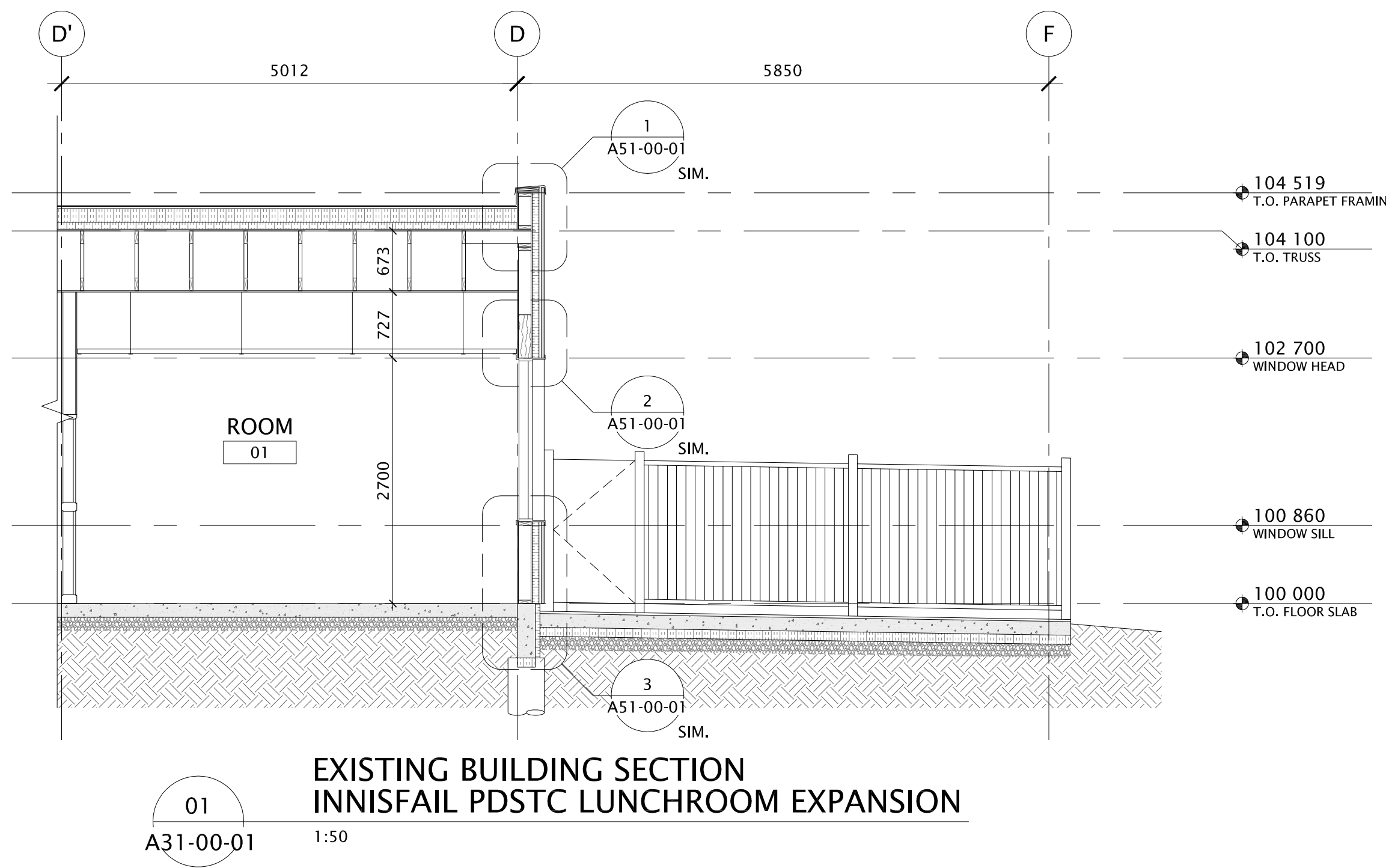
Victor Steinhilber, Architect, A.A.A., B.Arch, M.A.S.C.
 Bruce G. Macdonald, Architect, A.A.A., M.A.S.C., M.A.S.T.P.
 A. Brian Robertson, Architect, A.A.A., B.Arch, M.A.S.C.
 Arden Trudell, P.Eng., A.P.E.C.A.
 Chris Hill, P.Eng., A.P.E.C.A.

Project Manager
 D. HIDER
 Project Leader
 D. HIDER
 Client
RCMP

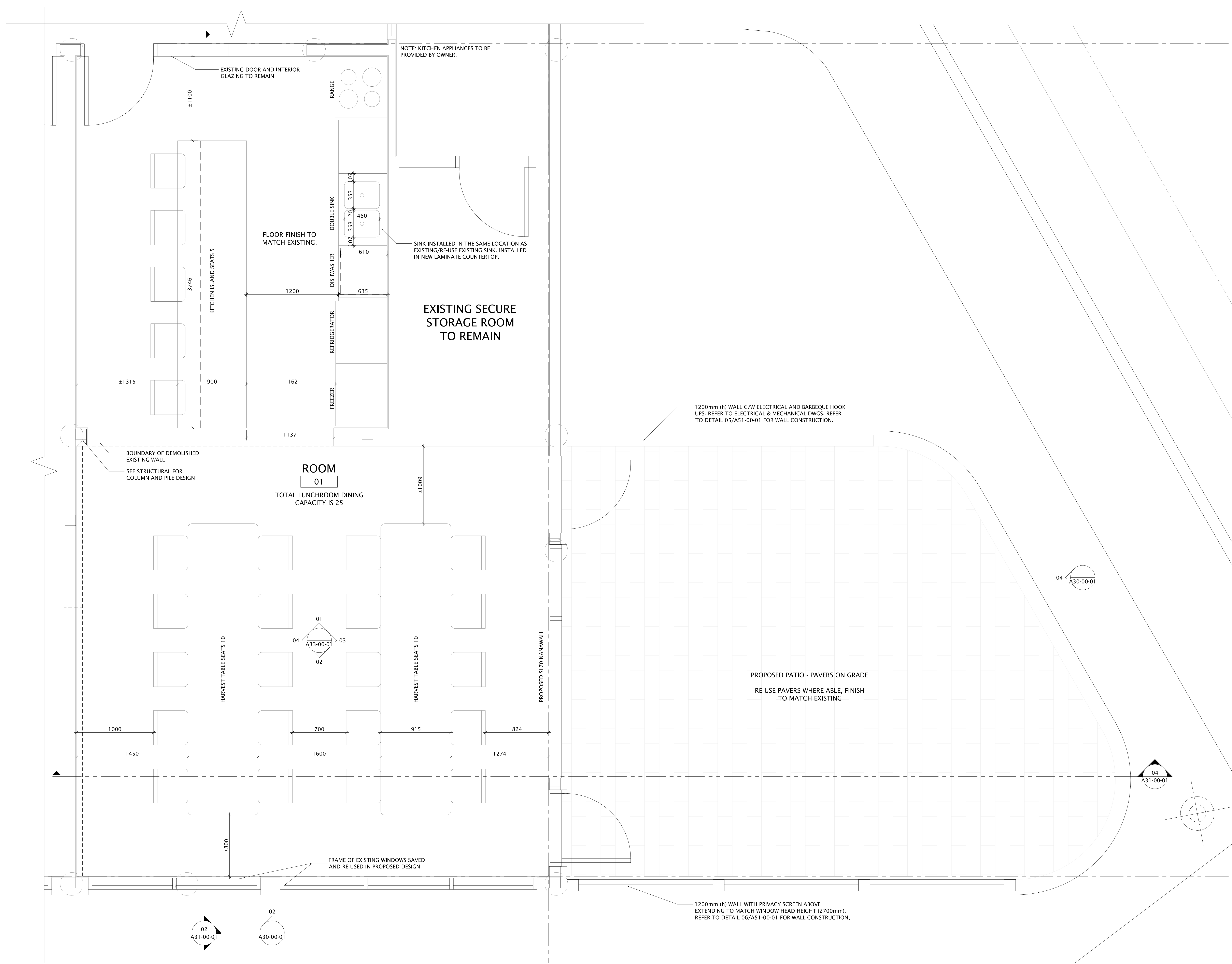
Project
INNISFAIL PDSTC LUNCHROOM EXPANSION

Drawing Title
BUILDING SECTIONS

Check Scale (may be photo reduced)
 0 10mm
 Project No. **NCCA17-0228**
 Drawing No. **A31-00-01**



PLOT DATE: March 28, 2018 TIME: 12:51 PM FULL PATH AND FILENAME: P:\RCMP_PROJECTS\NCCA17-0228 - RCMP - DTF LUNCHROOM EXPANSION\500-DELIVARCH_PROD\SHEETS\A40-00-01.DWG PLOTSYLE TABLE: PMA-STD-100.cbr



01 ENLARGED LUNCHROOM PLAN
A40-00-01 1:20

DATE	ISSUED FOR	REV
2018-02-07	ISSUED FOR 60% REVIEW	
2018-02-14	ISSUED FOR DP	
2018-03-02	ISSUED FOR 95% REVIEW	
2018-03-29	ISSUED FOR TENDER	

This drawing has been prepared solely for the use of the CLIENT and there are no representations of any kind made by NORR Architects Engineers Planners to any party with whom NORR Architects Engineers Planners has not entered into a contract.

This drawing shall not be used for construction purposes until the seal appearing hereon is signed and dated by the Architect or Engineer.

Project Component
LUNCHROOM EXPANSION

Keyplan

Consultants

Architectural: NORR Architects Engineers Planners
Structural: NORR Architects Engineers Planners
Mechanical: NORR Architects Engineers Planners
Electrical: NORR Architects Engineers Planners

Seal(s)

NORR

2300, 411 - 1st Street SE,
Calgary, AB Canada T2G 4Y5
norr.com

NORR ARCHITECTS ENGINEERS PLANNERS
A Partnership of Limited Companies

For More Information, Contact Us: For More Help, Go To: www.norr.com
NORR is a registered member of the International Brotherhood of Architects and Engineers (I.B.A.E.)

Victor Smith, Architect, A.A.A., B.Arch, M.A.S.C.
Bruce G. MacKinnon, Architect, A.A.A., M.A.S.C., M.A.S.T.P.
A. Shaheed, Structural Engineer, A.A.A., B.Arch, M.A.S.C.
Adrian Trudell, P.Eng., A.P.E.G.A.
Chris Hill, P.Eng., A.P.E.G.A.

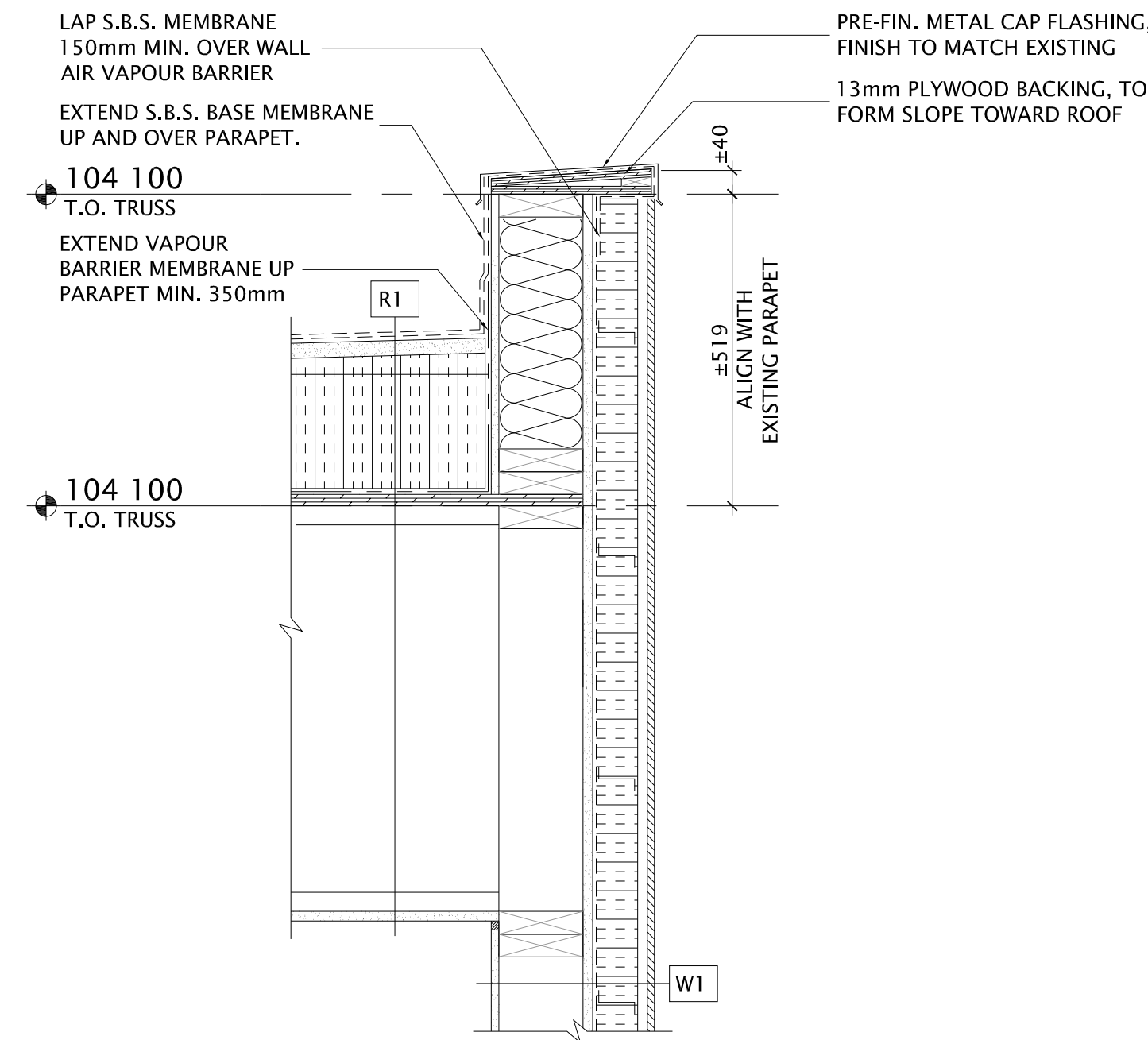
Project Manager D. HIDER	Drawn
Project Leader D. HIDER	Checked
Client RCMP	

Project
**INNISFAIL PDSTC
LUNCHROOM EXPANSION**

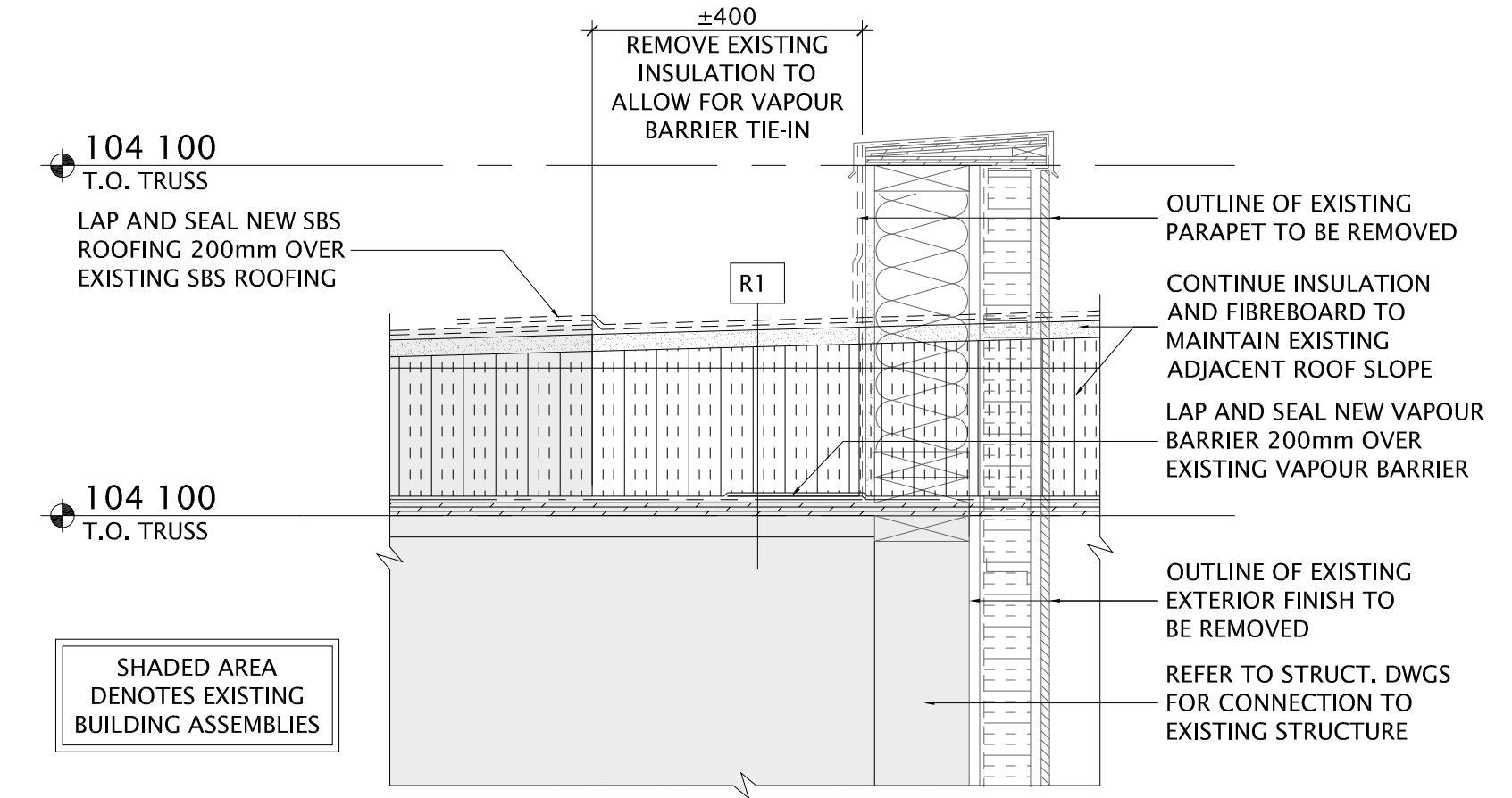
Drawing Title
ENLARGED PLAN

Check Scale (may be photo reduced)	0 1inch 0 10mm
Project No.	NCCA17-0228
Drawing No.	A40-00-01

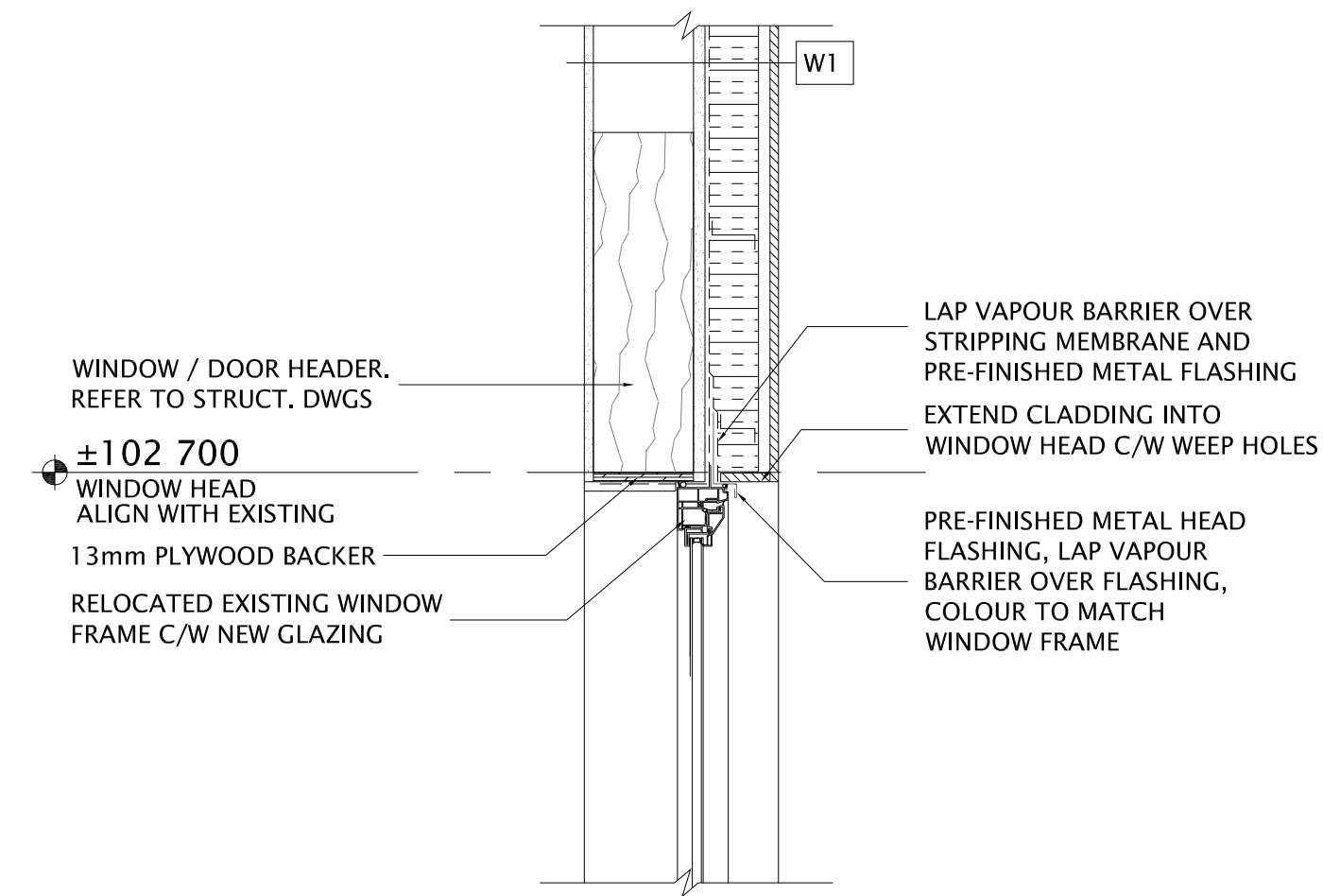
PLOT DATE: March 28, 2018 TIME: 12:51 PM FULL PATH AND FILENAME: P:\RCMP_PROJECTS\NCCA17-0228 - RCMP - DTF LUNCHROOM EXPANSION\500-DELIVARCH_PROD\SHEETS\A51-00-01.DWG PLOTSTYLE TABLE: PMA-STD-100.ctb



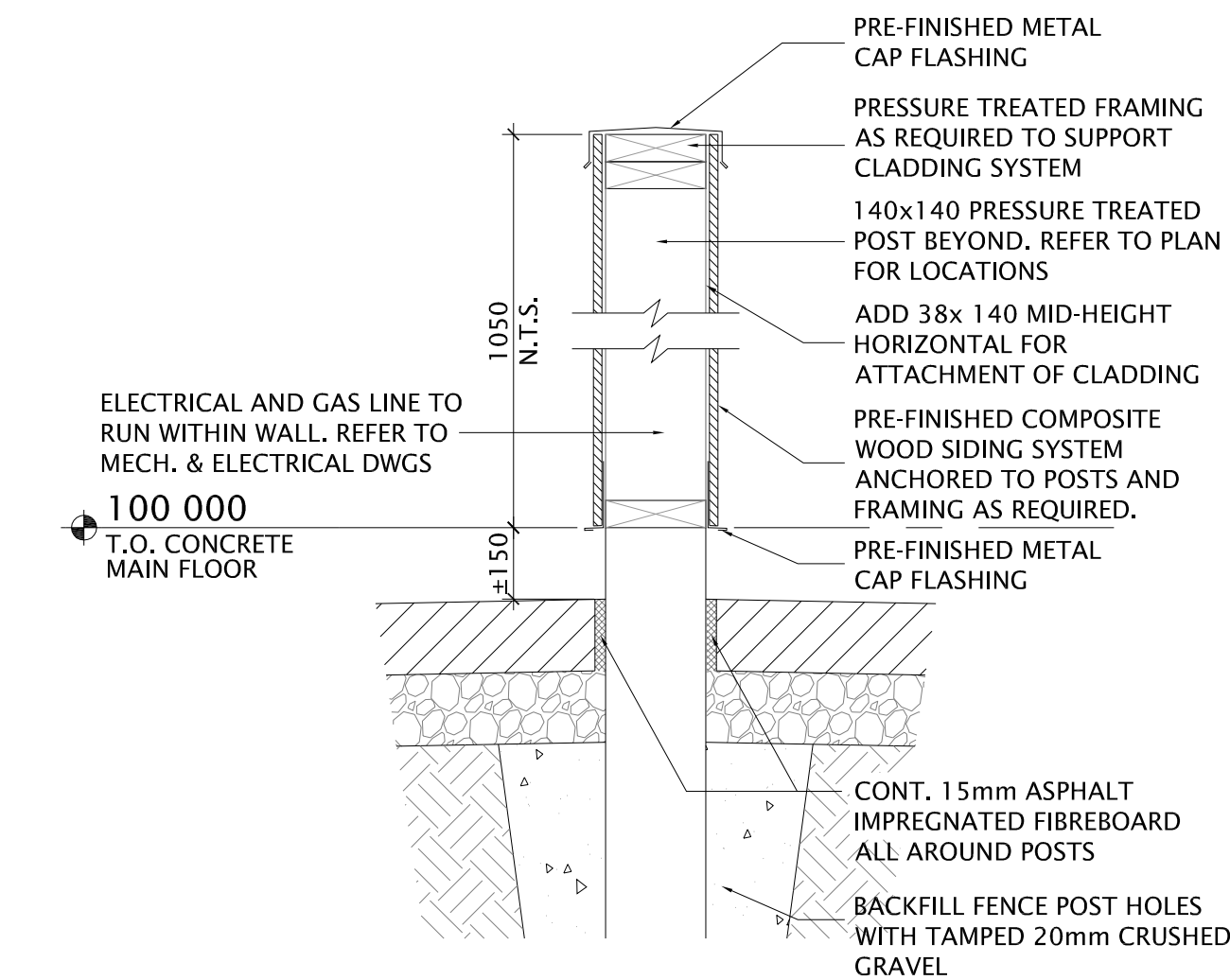
01 SECTION DETAIL - PARAPET
A51-00-01 1:10



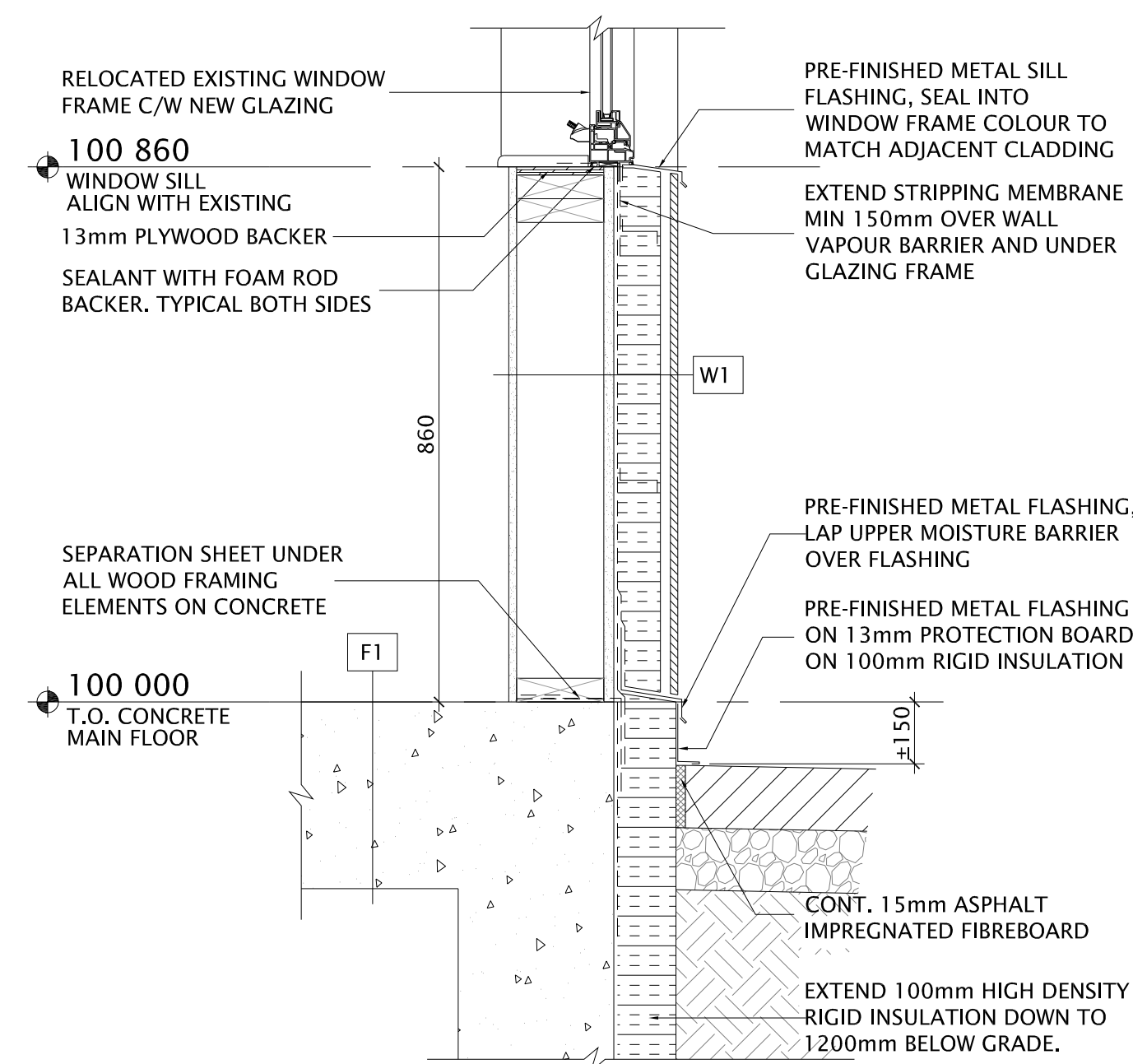
04 SECTION DETAIL - ROOF CONNECTION
A51-00-01 1:10



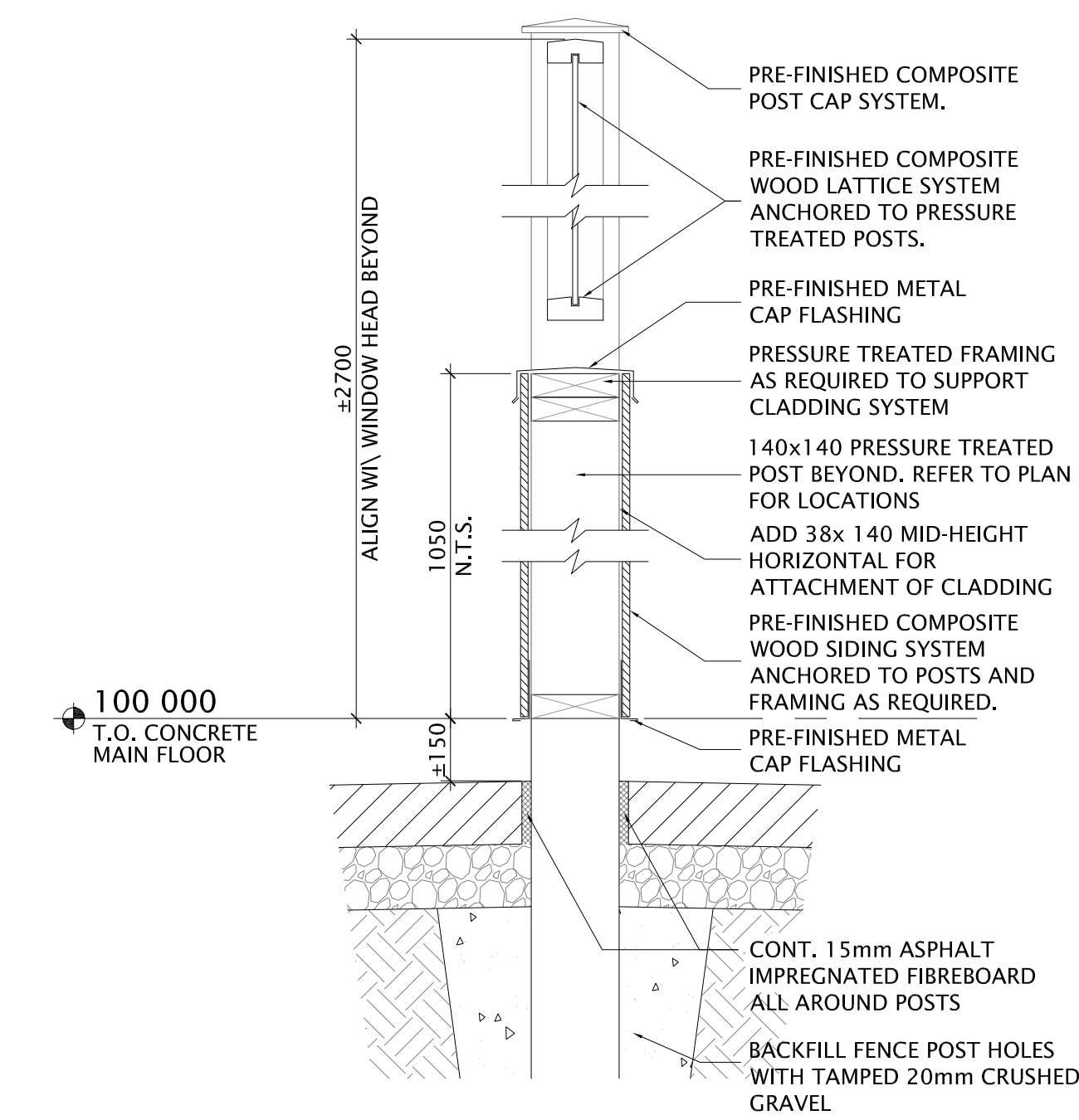
02 SECTION DETAIL - WINDOW HEAD
A51-00-01 1:10



05 SECTION DETAIL EXTERIOR PARTIAL HEIGHT WALL
A51-00-01 1:10



03 SECTION DETAIL - WALL BASE
A51-00-01 1:10



06 SECTION DETAIL EXTERIOR PARTIAL HEIGHT LATTICE WALL
A51-00-01 1:10

DATE	ISSUED FOR	REV
2018-02-07	ISSUED FOR 60% REVIEW	
2018-02-14	ISSUED FOR DP	
2018-03-02	ISSUED FOR 95% REVIEW	
2018-03-29	ISSUED FOR TENDER	

This drawing has been prepared solely for the use of the CLIENT and there are no representations of any kind made by NORR Architects Engineers Planners to any party with whom NORR Architects Engineers Planners has not entered into a contract.
This drawing shall not be used for construction purposes until the seal appearing hereon is signed and dated by the Architect or Engineer.

Project Component
LUNCHROOM EXPANSION
Keyplan

Consultants
Architectural: NORR Architects Engineers Planners
Structural: NORR Architects Engineers Planners
Mechanical: NORR Architects Engineers Planners
Electrical: NORR Architects Engineers Planners

Seal(s)

NORR
2300, 411 - 1st Street SE,
Calgary, AB Canada T2G 4Y5
norr.com
NORR ARCHITECTS ENGINEERS PLANNERS
A Partnership of Limited Companies
NORR is a registered provider of training under the Accredited Construction Education Program.

Victor Shih, Architect, AIA, B.Arch, M.Arch.
Bruce G. Macdonald, Architect, AIA, M.Arch, M.A.S.P.
A. Shaik-Babji, Architect, AIA, B.Arch, M.Arch.
Ardan Trudka, P.Eng., A.P.E.C.A.
Chris Hill, P.Eng., A.P.E.C.A.

Project Manager
D. HIDER
Project Leader
D. HIDER
Client
RCMP

Project
**INNISFAIL PDSTC
LUNCHROOM EXPANSION**

Drawing Title
SECTIONS DETAILS

Check Scale (may be photo reduced)
0 1inch 0 10mm

Project No. NCCA17-0228
Drawing No. A51-00-01