

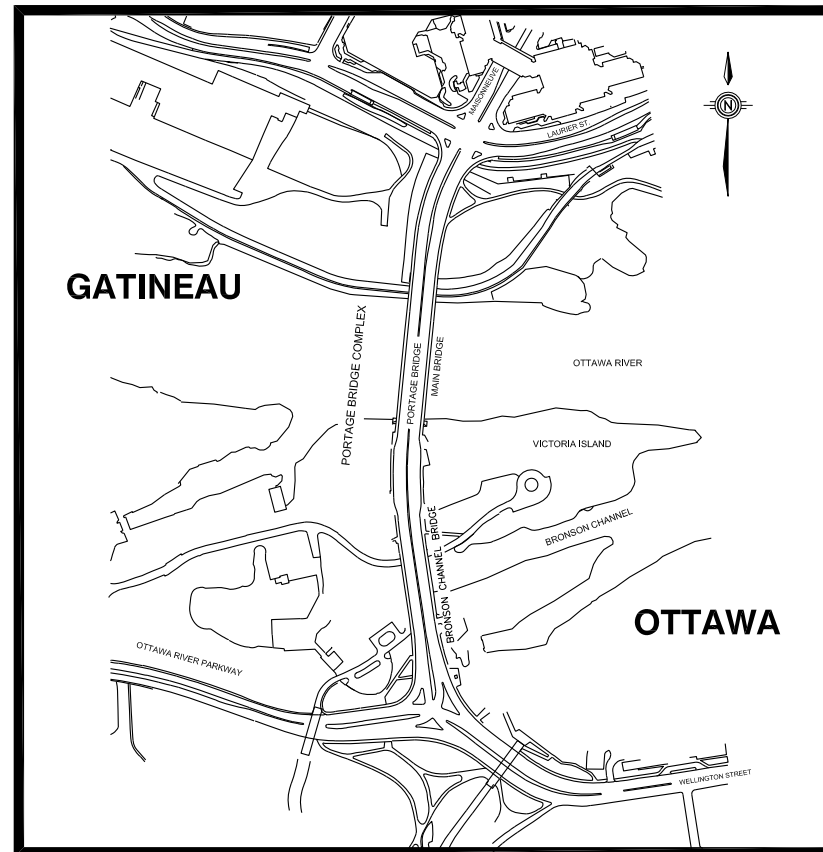
National Capital Commission Commission De La Capitale Nationale

Canada



National Capital
Commission

Commission
de la Capitale Nationale



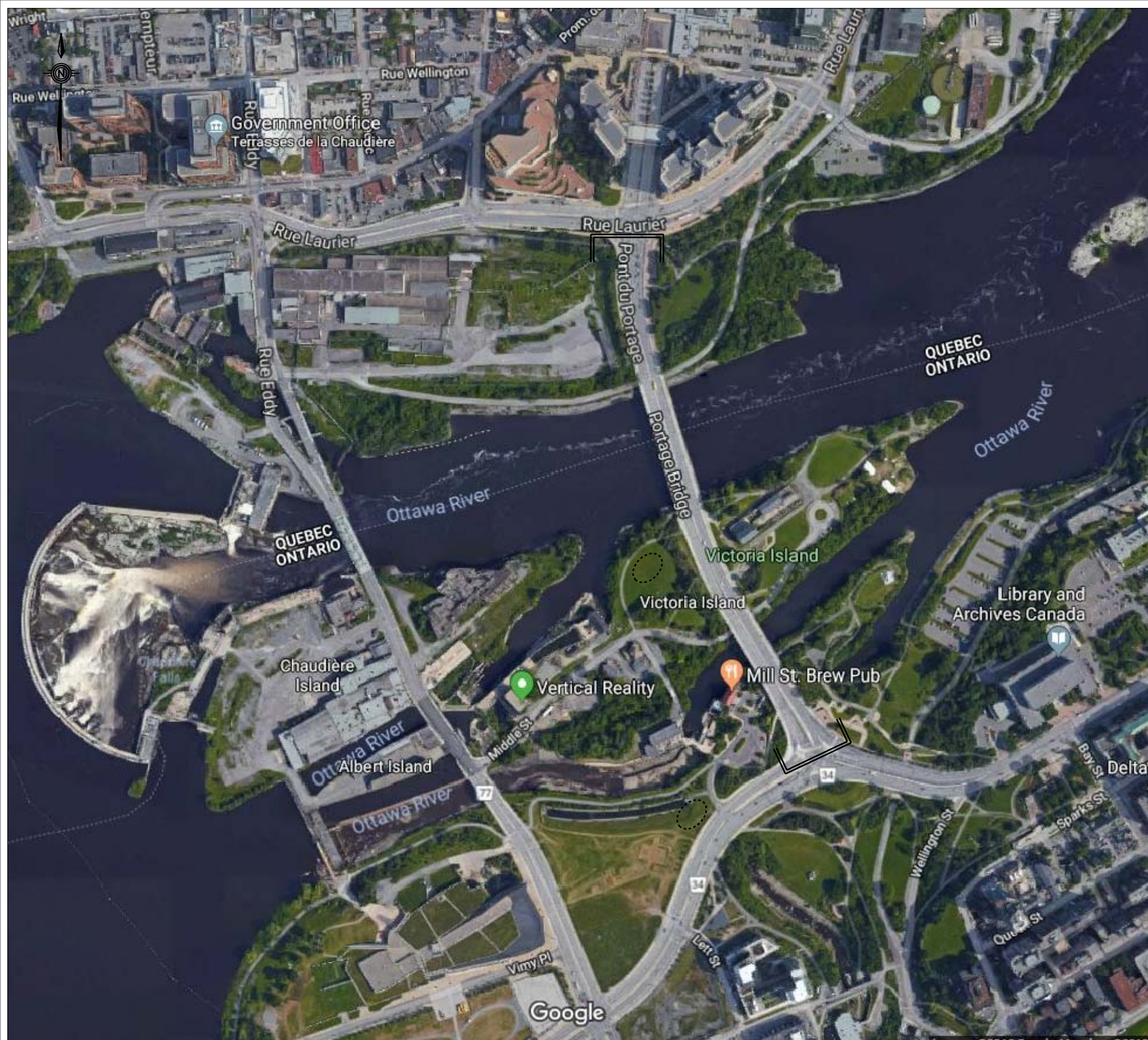
WSP PROJECT NUMBER: 141-20906-16

LIST OF DRAWINGS

- 00 COVER SHEET
- 01 OVERALL SITE PLAN
- 02 REMOVALS PLAN - NORTH HALF
- 03 REMOVALS PLAN - SOUTH HALF
- 04 SECTIONS - REMOVALS
- 05 SECTION AND DETAILS - REMOVALS
- 06 RECONSTRUCTION PLAN - NORTH HALF
- 07 RECONSTRUCTION PLAN - SOUTH HALF
- 08 SECTIONS - RECONSTRUCTION
- 09 SECTION AND DETAILS - RECONSTRUCTION
- 10 PARAPET WALL END TREATMENT
- 11 MAIN BRIDGE APPROACH SLABS
- 12 SINGLE CATCH BASIN AND MAIN BRIDGE DECK DRAIN DETAILS
- 13 DOUBLE CATCH BASIN DETAILS
- 14 PARAPET WALL AND RAILING DETAILS
- 15 PARAPET REINFORCING AT CATCH BASIN
- 16 EXPANSION JOINT REMOVALS
- 17 EXPANSION JOINT REPAIRS
- 18 PAVEMENT MARKING
- 19 PEDESTRIAN/CYCLIST DETOUR PLAN

PORTAGE BRIDGE SURFACE REPAIRS AND CYCLE TRACK IMPROVEMENT

OTTAWA - GATINEAU
CONTRACT NO. 175


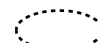


SITE PLAN

NOTES:

1. THE STORAGE AREA ON THE WEST OF THE MILL STREET BREW PUB IS ON CONTAMINATED SOILS. THERE IS NO EXCAVATION ALLOWED IN THIS AREA.
2. GEOTEXTILE AND GRANULAR SURFACE SHALL BE INSTALLED ON THE STORAGE AREA PRIOR TO THE USE OF THE AREA.
3. ALL GRASSY AREAS USED FOR STORAGE AND CONSTRUCTION DEPOT TO BE REINSTATED WITH TOP SOIL AND SOD THAT SHALL BE WATERED, MOWED AND MAINTAINED UNTIL FULLY ESTABLISHED.
4. OTHER DISTURBED SURFACES TO BE REINSTATED TO ORIGINAL OR BETTER CONDITION.
5. STORAGE AND CONSTRUCTION DEPOT TO BE FENCED WITH MODULAR FENCING OR EQUIVALENT.

LEGENDS:

-  WORK AREA
-  CONSTRUCTION DEPOT




Capital Planning and Real Asset Management Branch
 Direction de l'aménagement de la capitale et gestion de l'immobilier

Design and Construction Division
 Division design et construction

director - Claude Robert - directeur

consultant
expert-conseil



300-2611 QUEENSWAY DRIVE
 OTTAWA (ONTARIO)
 CANADA K2B 8K2
 TELEPHONE: 613-829-2800 FAX: 613-829-8299
 WWW.WSP.COM

Issued or revised émis ou révisé		
no.	description	date

project/projet

**PORTAGE BRIDGE
 SURFACE REPAIRS AND
 CYCLE TRACK
 IMPROVEMENT**

Drawing Title/Titre du dessin

SITE PLAN

approved by approuvé par	
designed by conçu par	Z.F.W.
drawn by dessiné par	H.L.
date	MAY 2018
scale	échelle AS / TI
NCC project no. no. du projet de la CCN	sheet no. no. de la feuille

I:\ENRAME_P\141-2020-16 Portage Bridge Surface Reconstruction\3.0 Technical By Decision\3.1.7 Day-By-Day\Drawings\141-2020-16_B01_01-1.dwg
 Created: May 22, 2018 - 9:08am
 Drawn: H.L.



Issued or revised
 émis ou révisé

no.	description	date

project/projet

**PORTAGE BRIDGE SURFACE
 REPAIRS AND CYCLE
 TRACK IMPROVEMENT**

**BOULEVARD DE LA
 CONFÉDÉRATION
 COMPLEXE DU
 PONT DU PORTAGE**

OTTAWA - GATINEAU

Drawing Title/Titre du dessin

**PORTAGE BRIDGE
 COMPLEX
 COMPLEXE DU
 PONT DU PORTAGE**
REMOVALS PLAN - NORTH HALF

approved by
 approuvé par

designed by
 conçu par

drawn by
 dessiné par

date

NCC project no.
 no. de projet de la CCN

scale
 échelle

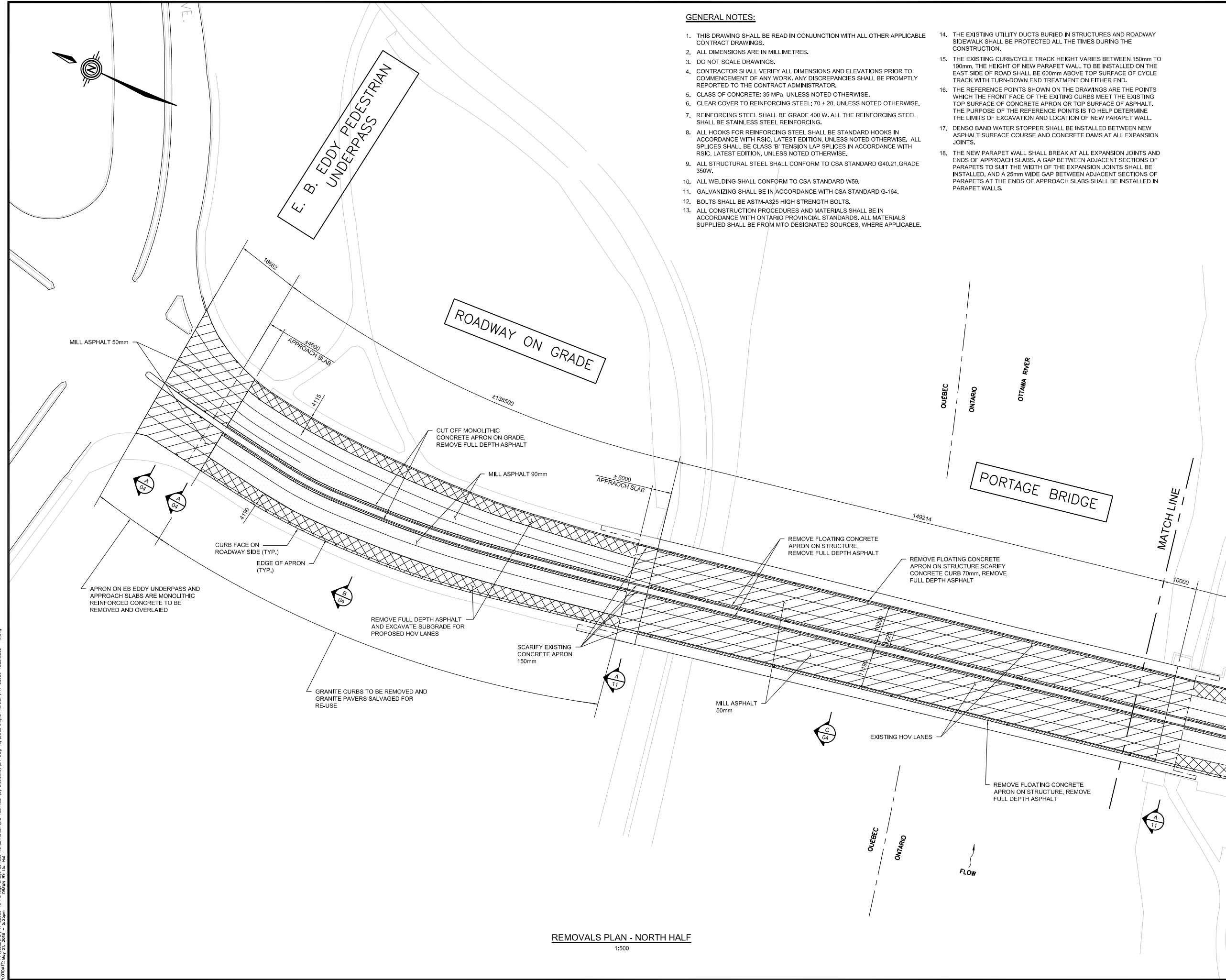
sheet no.
 no. de la feuille

AS / TI

02

GENERAL NOTES:

1. THIS DRAWING SHALL BE READ IN CONJUNCTION WITH ALL OTHER APPLICABLE CONTRACT DRAWINGS.
2. ALL DIMENSIONS ARE IN MILLIMETRES.
3. DO NOT SCALE DRAWINGS.
4. CONTRACTOR SHALL VERIFY ALL DIMENSIONS AND ELEVATIONS PRIOR TO COMMENCEMENT OF ANY WORK. ANY DISCREPANCIES SHALL BE PROMPTLY REPORTED TO THE CONTRACT ADMINISTRATOR.
5. CLASS OF CONCRETE: 35 MPa, UNLESS NOTED OTHERWISE.
6. CLEAR COVER TO REINFORCING STEEL: 70 ± 20, UNLESS NOTED OTHERWISE.
7. REINFORCING STEEL SHALL BE GRADE 400 W. ALL THE REINFORCING STEEL SHALL BE STAINLESS STEEL REINFORCING.
8. ALL HOOKS FOR REINFORCING STEEL SHALL BE STANDARD HOOKS IN ACCORDANCE WITH RSIC, LATEST EDITION, UNLESS NOTED OTHERWISE. ALL SPLICES SHALL BE CLASS 'B' TENSION LAP SPLICES IN ACCORDANCE WITH RSIC, LATEST EDITION, UNLESS NOTED OTHERWISE.
9. ALL STRUCTURAL STEEL SHALL CONFORM TO CSA STANDARD G40.21, GRADE 350W.
10. ALL WELDING SHALL CONFORM TO CSA STANDARD W59.
11. GALVANIZING SHALL BE IN ACCORDANCE WITH CSA STANDARD G-164.
12. BOLTS SHALL BE ASTM-A325 HIGH STRENGTH BOLTS.
13. ALL CONSTRUCTION PROCEDURES AND MATERIALS SHALL BE IN ACCORDANCE WITH ONTARIO PROVINCIAL STANDARDS. ALL MATERIALS SUPPLIED SHALL BE FROM MTO DESIGNATED SOURCES, WHERE APPLICABLE.
14. THE EXISTING UTILITY DUCTS BURIED IN STRUCTURES AND ROADWAY SIDEWALK SHALL BE PROTECTED ALL THE TIMES DURING THE CONSTRUCTION.
15. THE EXISTING CURB/CYCLE TRACK HEIGHT VARIES BETWEEN 150mm TO 190mm, THE HEIGHT OF NEW PARAPET WALL TO BE INSTALLED ON THE EAST SIDE OF ROAD SHALL BE 600mm ABOVE TOP SURFACE OF CYCLE TRACK WITH TURN-DOWN END TREATMENT ON EITHER END.
16. THE REFERENCE POINTS SHOWN ON THE DRAWINGS ARE THE POINTS WHICH THE FRONT FACE OF THE EXISTING CURBS MEET THE EXISTING TOP SURFACE OF CONCRETE APRON OR TOP SURFACE OF ASPHALT. THE PURPOSE OF THE REFERENCE POINTS IS TO HELP DETERMINE THE LIMITS OF EXCAVATION AND LOCATION OF NEW PARAPET WALL.
17. DENSO BAND WATER STOPPER SHALL BE INSTALLED BETWEEN NEW ASPHALT SURFACE COURSE AND CONCRETE DAMS AT ALL EXPANSION JOINTS.
18. THE NEW PARAPET WALL SHALL BREAK AT ALL EXPANSION JOINTS AND ENDS OF APPROACH SLABS. A GAP BETWEEN ADJACENT SECTIONS OF PARAPETS TO SUIT THE WIDTH OF THE EXPANSION JOINTS SHALL BE INSTALLED, AND A 25mm WIDE GAP BETWEEN ADJACENT SECTIONS OF PARAPETS AT THE ENDS OF APPROACH SLABS SHALL BE INSTALLED IN PARAPET WALLS.



REMOVALS PLAN - NORTH HALF
 1:500

I:\NAME P:\Users\2018\141-20906-16 Portage Bridge Surface Rehabilitation\3.0 Technical\Discipline\3.7 Design\Drawings\141-20906-16_R01_02 - M.dwg
 Created: May 21, 2018 9:22am
 Drawn: H.L.

no.	description	date

project/projet

**PORTAGE BRIDGE
 SURFACE REPAIRS AND
 CYCLE TRACK
 IMPROVEMENT**

Drawing Title/Titre du dessin

**REMOVALS PLAN -
 SOUTH HALF**

approved by
 approuvé par

designed by
 conçu par Z.F.W.

drawn by
 dessiné par H.L.

date MAY 2018

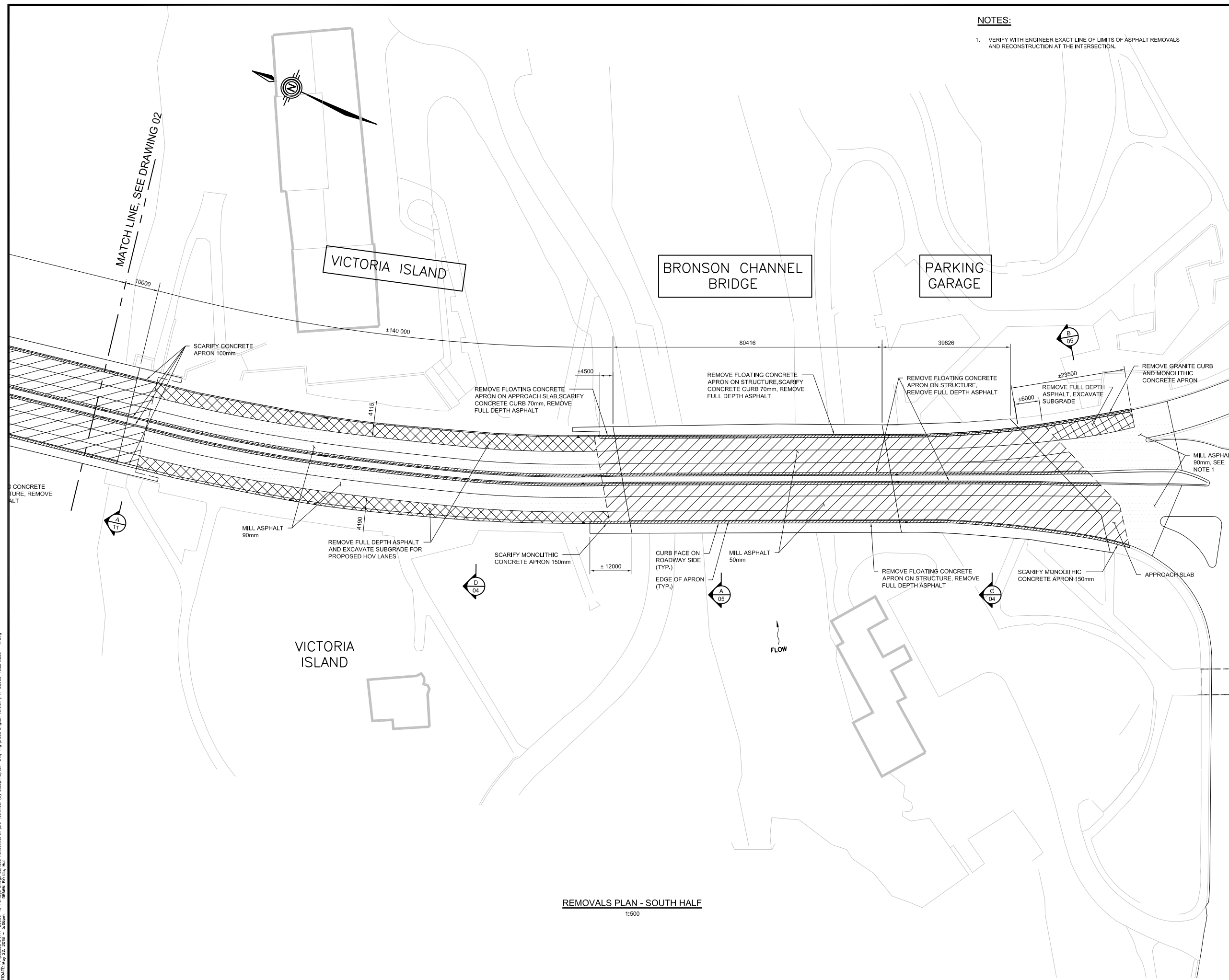
scale
 échelle AS / TI

NCC project no.
 no. du projet de la CCN

sheet no.
 no. de la feuille

NOTES:

1. VERIFY WITH ENGINEER EXACT LINE OF LIMITS OF ASPHALT REMOVALS AND RECONSTRUCTION AT THE INTERSECTION.



REMOVALS PLAN - SOUTH HALF
 1:500

I:\NAME P\141-2006-16 Portage Bridge Surface Rehabilitation\3.0 Technical by Discipline\3.7 Day-Fig\DWG\English version\141-2006-16_BRM_03 - M.dwg
 Created: May 22, 2018 10:58 AM
 Drawn: H.L.

consultant
expert-conseil



300-2611 QUEENSHAW DRIVE
 OTTAWA (ONTARIO)
 CANADA K2B 8K2
 TELEPHONE: 613-829-2800 FAX: 613-829-8299
 WWW.WSP.COM

Issued or revised
émis ou révisé

no.	description	date

project/projet

PORTAGE BRIDGE
 SURFACE REPAIRS AND
 CYCLE TRACK
 IMPROVEMENT

Drawing Title/Titre du dessin

SECTIONS - REMOVALS

approved by
approuvé par

designed by
conçu par

Z.F.W.

drawn by
dessiné par

H.L.

date

MAY 2018

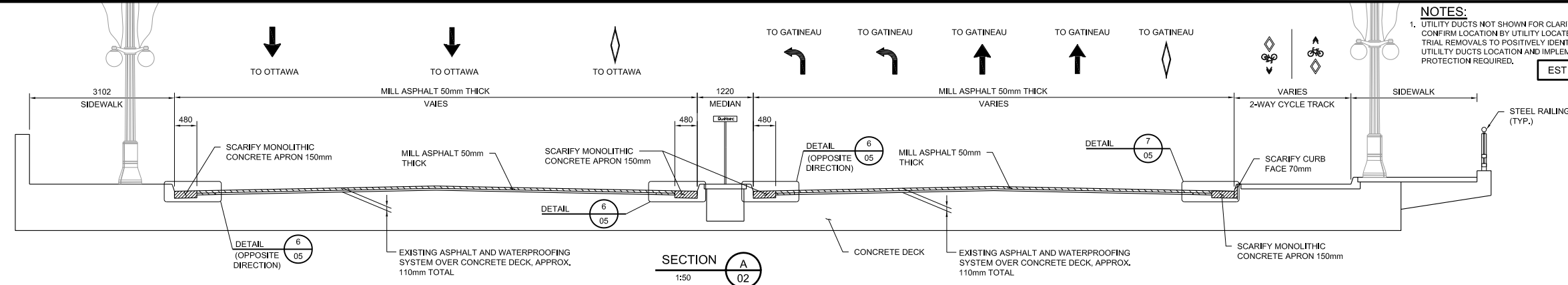
scale
échelle

AS / TI

NCC project no.
no. du projet de la CCN

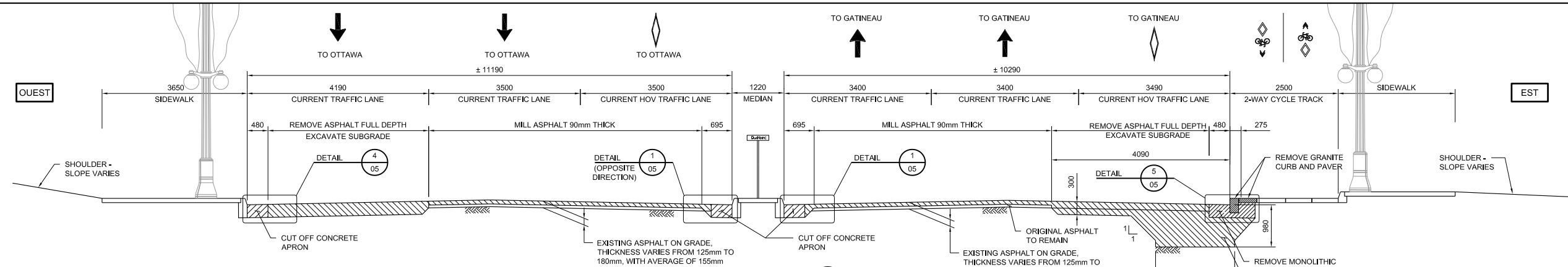
sheet no.
no. de la feuille

NOTES:
 1. UTILITY DUCTS NOT SHOWN FOR CLARITY.
 CONFIRM LOCATION BY UTILITY LOCATES AND
 TRIAL REMOVALS TO POSITIVELY IDENTIFY
 UTILITY DUCTS LOCATION AND IMPLEMENT ALL
 PROTECTION REQUIRED.

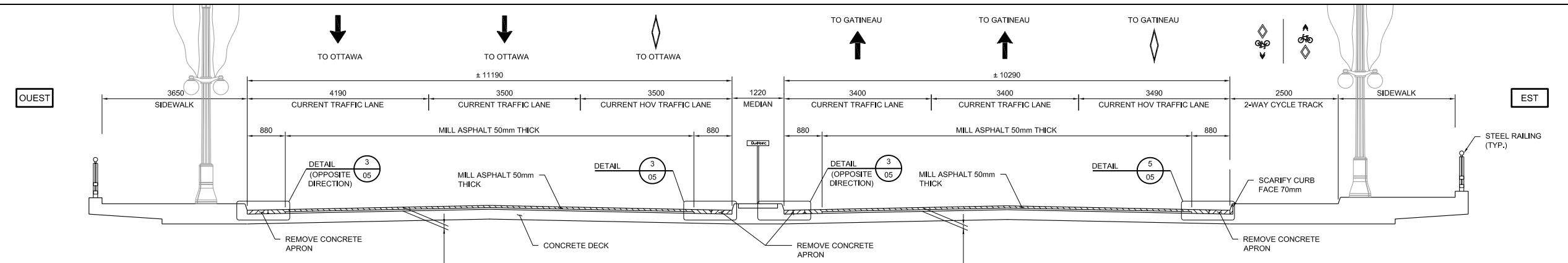


CROSS SECTION AT E.B. EDDY PEDESTRIAN UNDERPASS

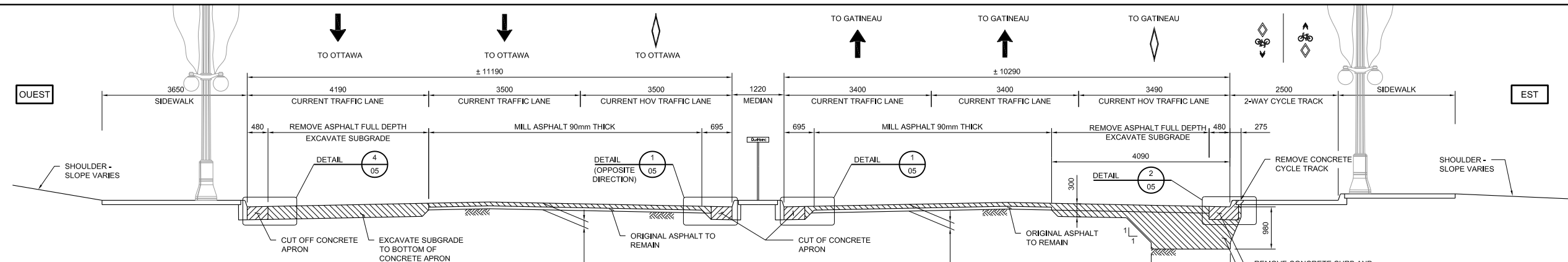
(APPROACH SLABS SIMILAR)



CROSS SECTION - ROADWAY ON GRADE

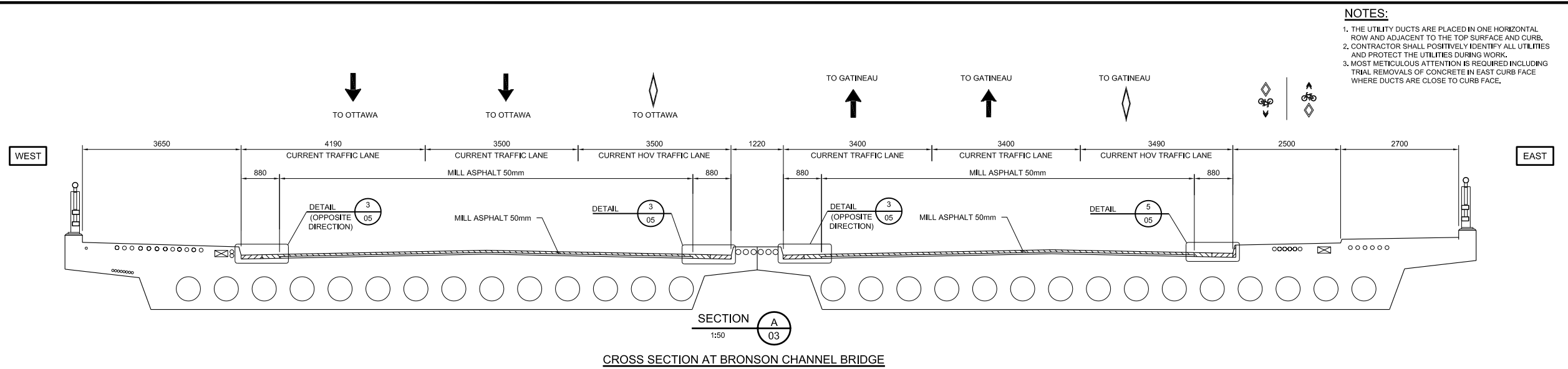


CROSS SECTION AT MAIN BRIDGE AND PARKING GARAGE

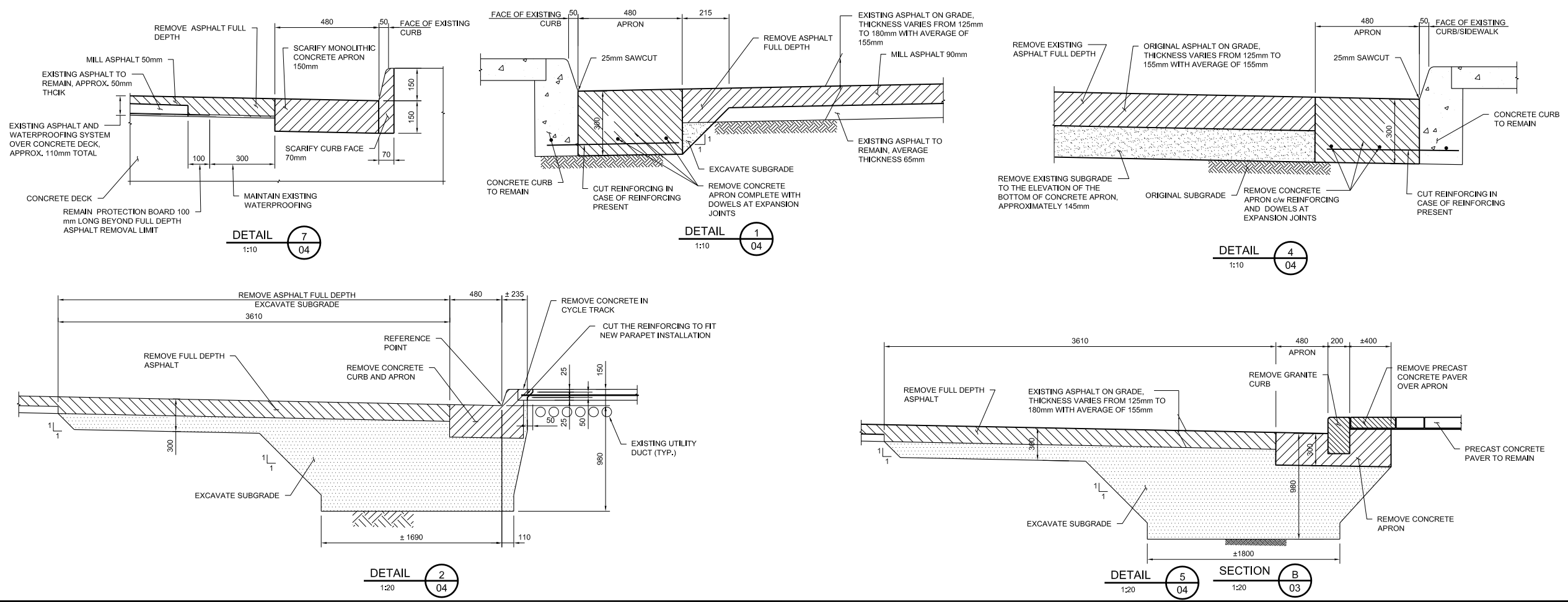
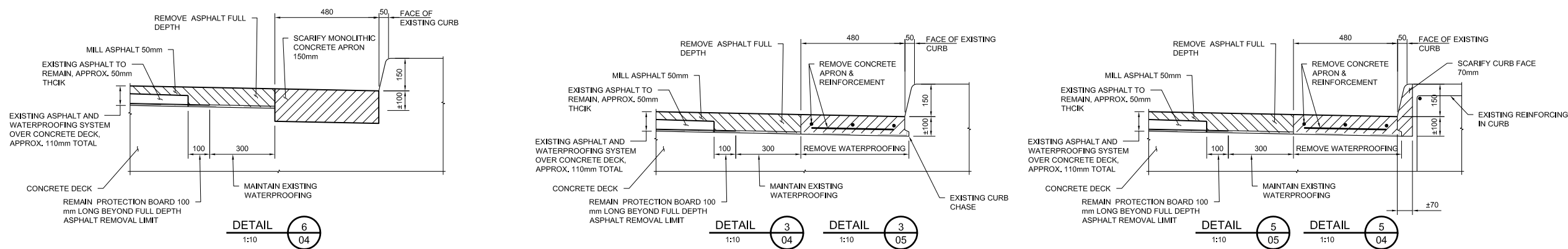


CROSS SECTION ON GRADE - VICTORIA ISLAND

\NAME: P:\Users\141-2096-16\Portage Bridge Surface Rehabilitation\3.0 Technical\Discipline\3.7 Design\Figures\English\version\141-2096-16_BRM_04-14.dwg
 DATE: 2018-05-22 2:08 PM
 DRAWN BY: H.L.



- NOTES:**
1. THE UTILITY DUCTS ARE PLACED IN ONE HORIZONTAL ROW AND ADJACENT TO THE TOP SURFACE AND CURB.
 2. CONTRACTOR SHALL POSITIVELY IDENTIFY ALL UTILITIES AND PROTECT THE UTILITIES DURING WORK.
 3. MOST METICULOUS ATTENTION IS REQUIRED INCLUDING TRIAL REMOVALS OF CONCRETE IN EAST CURB FACE WHERE DUCTS ARE CLOSE TO CURB FACE.



Capital Planning and Real Asset Management Branch
 Direction de l'aménagement de la capitale et gestion de l'immobilier

Design and Construction Division
 Division design et construction

director - Claude Robert - directeur

consultant
 expert-conseil

300-2611 QUEENSHAW DRIVE
 OTTAWA (ONTARIO)
 CANADA K2B 8K2
 TELEPHONE: 613-829-2800 FAX: 613-829-8299
 WWW.WSP.COM

Issued or revised
 émis ou révisé

**PORTAGE BRIDGE
 SURFACE REPAIRS AND
 CYCLE TRACK
 IMPROVEMENT**

**SECTIONS AND DETAILS -
 REMOVALS**

approved by
 approuvé par

designed by
 conçu par Z.F.W.

drawn by
 dessiné par H.L.

date MAY 2018 scale AS / TI

NCC project no. sheet no.
 no. du projet de la CCN no. de la feuille

no.	description	date

no.	description	date

project/projet

**PORTAGE BRIDGE
SURFACE REPAIRS AND
CYCLE TRACK
IMPROVEMENT**

Drawing Title/Titre du dessin

**RECONSTRUCTION PLAN -
NORTH HALF**

approved by
approuvé par

designed by
conçu par

Z.F.W.

drawn by
dessiné par

H.L.

date

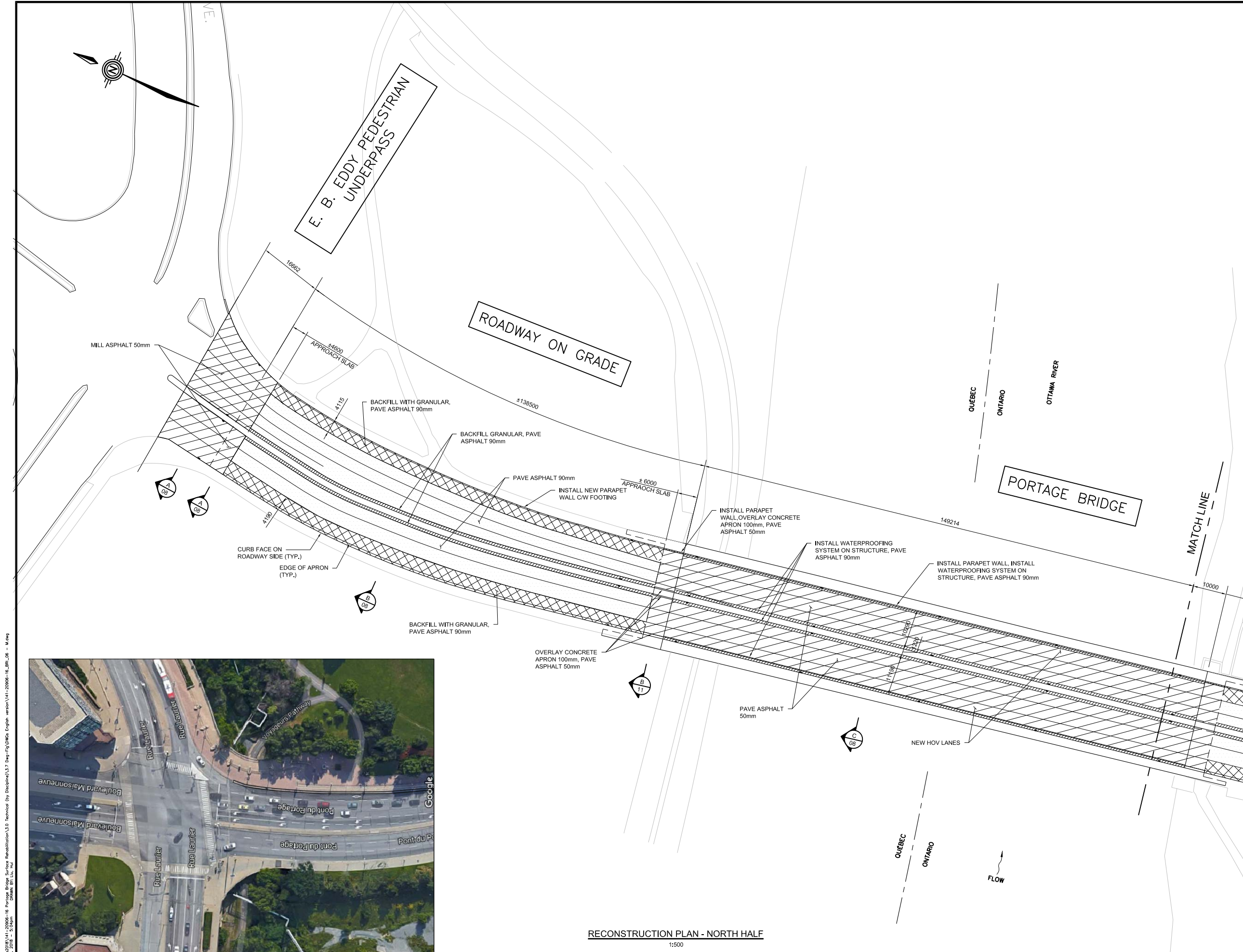
MAY 2018

scale
échelle

AS / TI

NCC project no.
no. du projet de la CCN

sheet no.
no. de la feuille



RECONSTRUCTION PLAN - NORTH HALF
1:500

\NAME P:\data\2018\141-2026-16 Portage Bridge Surface Rehabilitation\3.0 Technical By Discipline\3.7 Design\Drawings\141-2026-16_R06_06 - M.dg
 CONSULTANT: WSP | DATE: MAY 22, 2018 | 2:04pm
 DRAWING: 01141_06

no.	description	date

no.	description	date
project/projet		

**PORTAGE BRIDGE
SURFACE REPAIRS AND
CYCLE TRACK
IMPROVEMENT**

Drawing Title/Titre du dessin

**RECONSTRUCTION PLAN -
SOUTH HALF**

approved by
approuvé par

designed by
conçu par

Z.F.W.

drawn by
dessiné par

H.L.

date

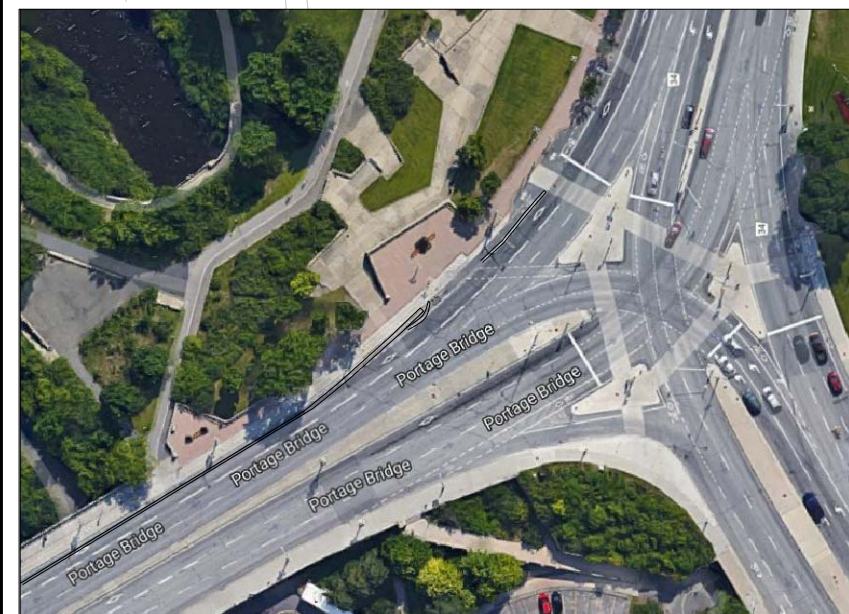
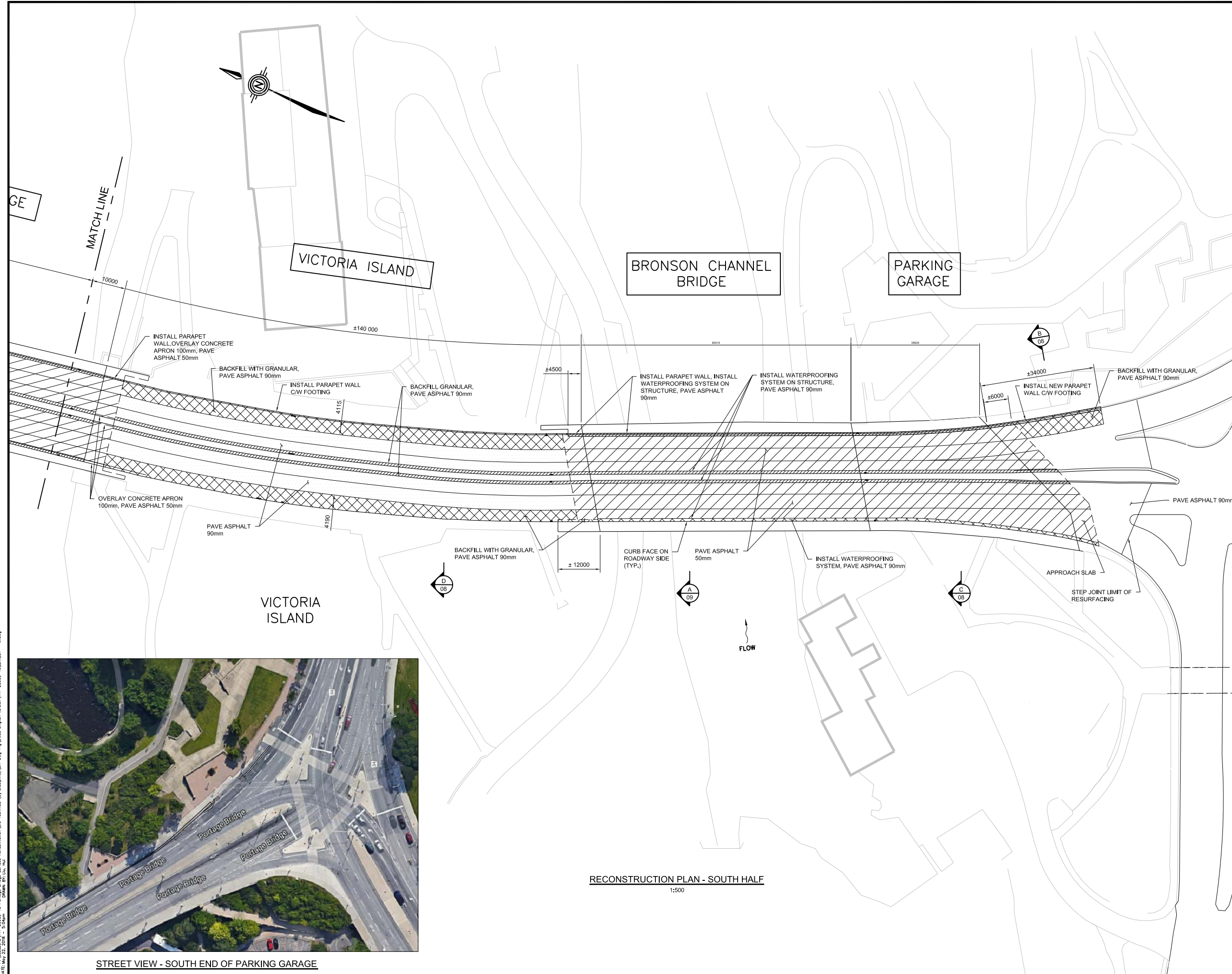
MAY 2018

scale
échelle

AS / TI

NCC project no.
no. du projet de la CCN

sheet no.
no. de la feuille



STREET VIEW - SOUTH END OF PARKING GARAGE

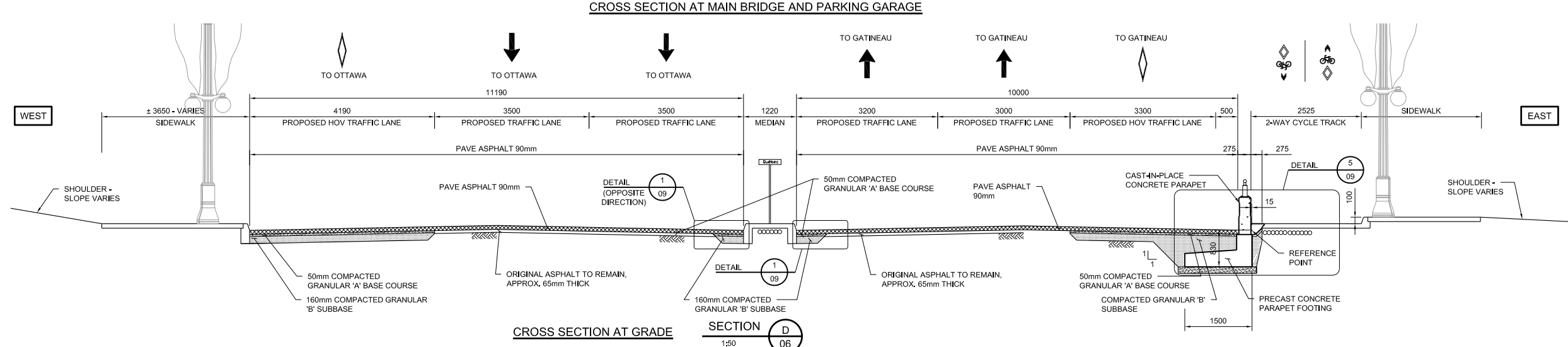
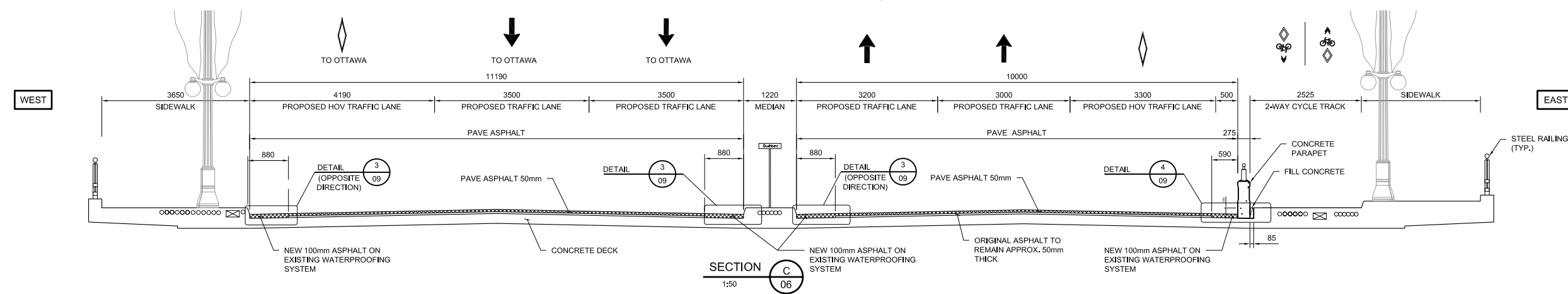
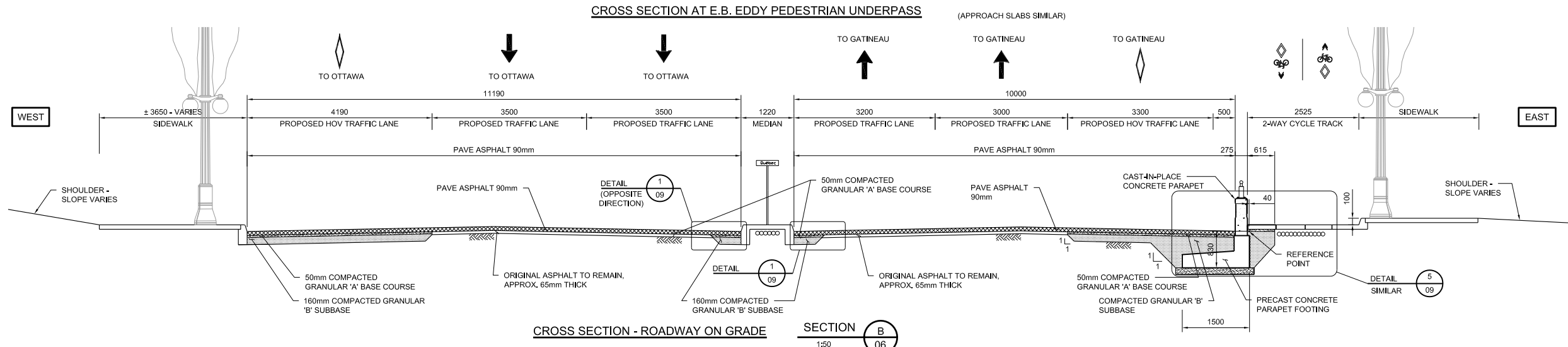
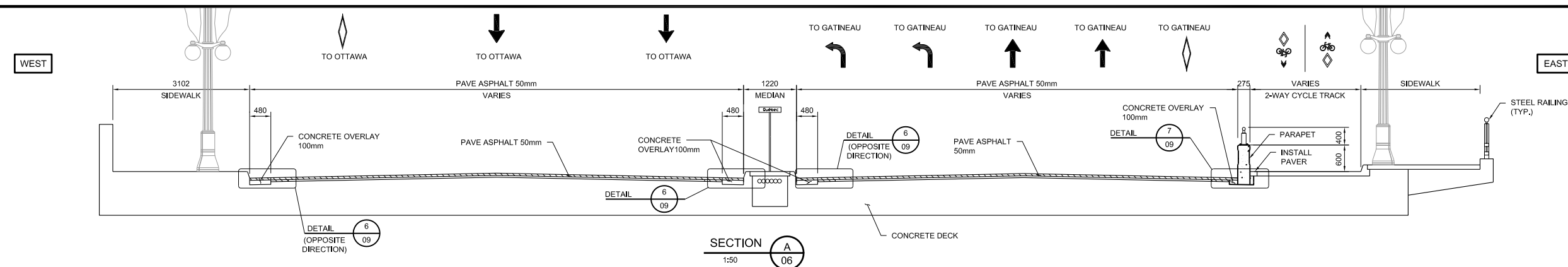
RECONSTRUCTION PLAN - SOUTH HALF
1:500

I:\NAME P. J... 2018\141-20906-16 Portage Bridge Surface Rehabilitation\3.0 Technical By Discipline\3.7 Design\3.7.1 Design\141-20906-16_BRM_07 - M.dwg
 CONSULTANT: WSP | DATE: MAY 22, 2018 | 2:04pm | DRAWN BY: H.L.

no.	description	date

**PORTAGE BRIDGE
 SURFACE REPAIRS AND
 CYCLE TRACK
 IMPROVEMENT**

**SECTIONS -
 RECONSTRUCTIONS**



\NAME: P:\data\2018\141-2006-16 Portage Bridge Surface Rehabilitation\3.0 Technical\Discipline\3.7 Eng-Fig\Draws_Engin\version\141-2006-16_Br_08-14.dwg
 DATE: 2018 MAY 23 2:08 PM
 DRAWN BY: J.L.H.

no.	description	date

no.	description	date

project/projet

**PORTAGE BRIDGE
 SURFACE REPAIRS AND
 CYCLE TRACK
 IMPROVEMENT**

Drawing Title/Titre du dessin

**MAIN BRIDGE
 APPROACH SLABS**

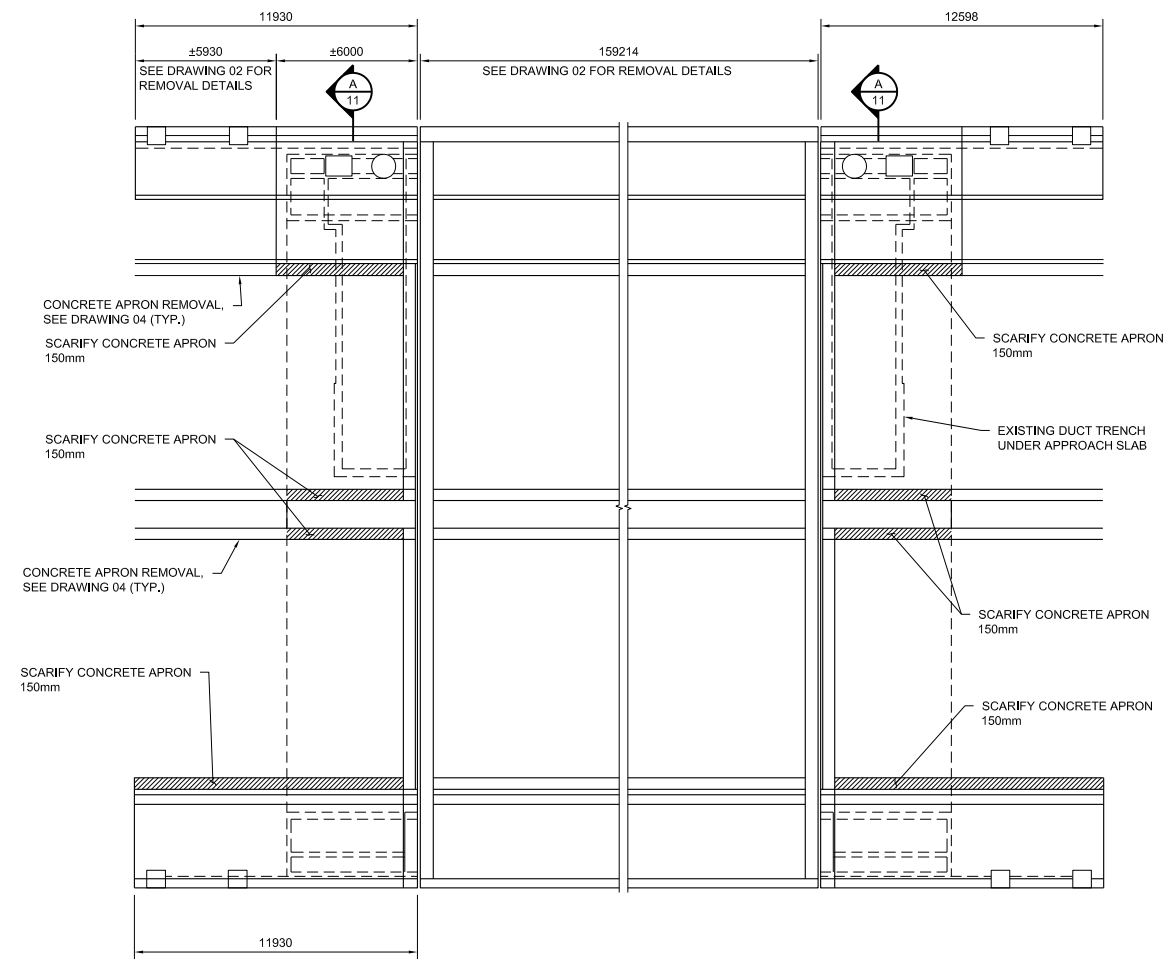
approved by
 approuvé par

designed by
 conçu par Z.F.W.

drawn by
 dessiné par H.L.

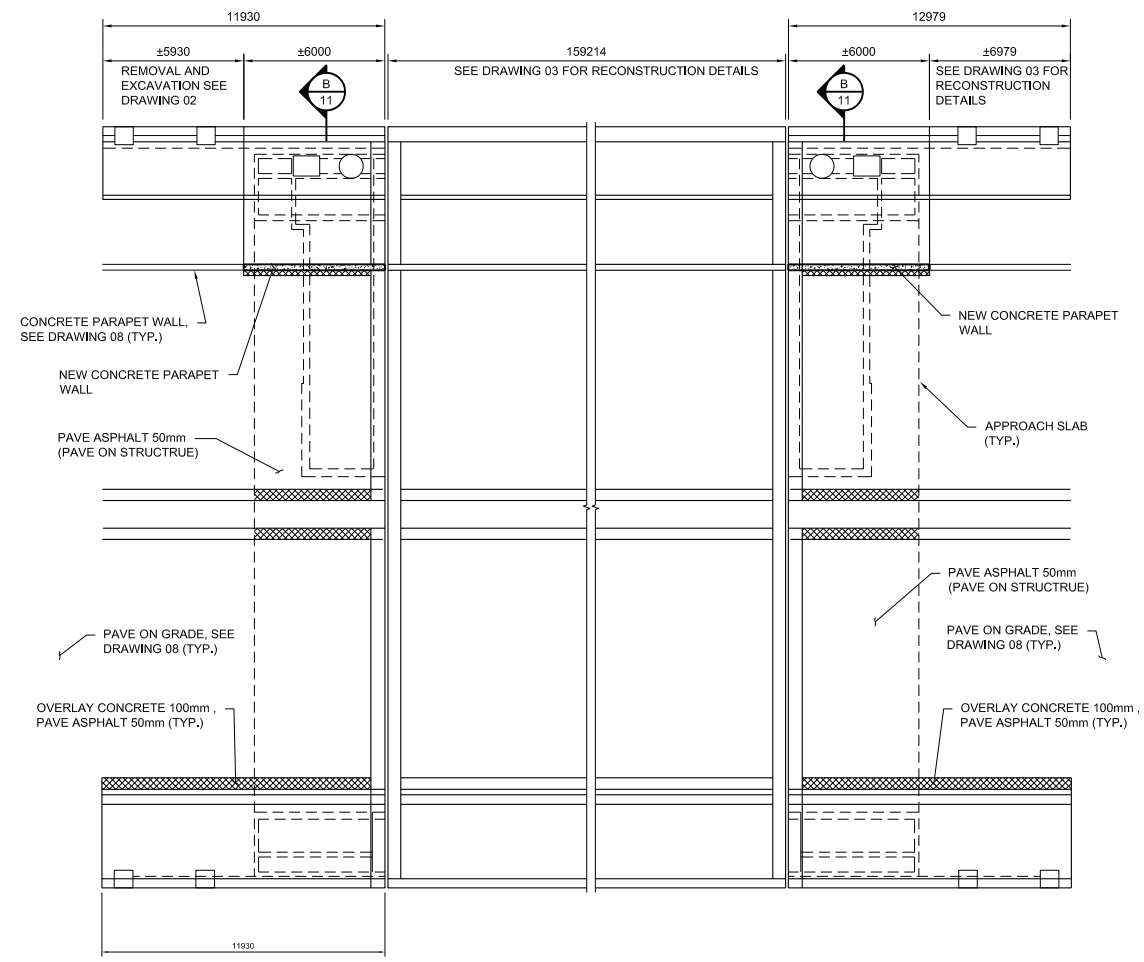
date MAY 2018 scale AS / TI
 échelle

NCC project no. sheet no.
 no. du projet de la CCN no. de la feuille



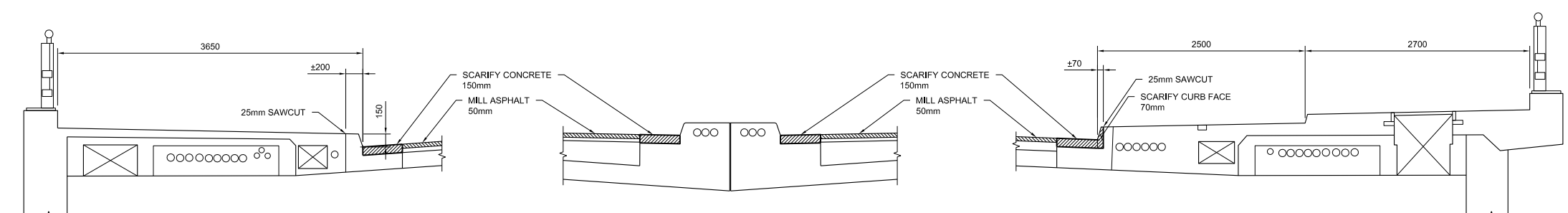
MAIN BRIDGE APPROACH SLAB PLAN - REMOVALS

1:150

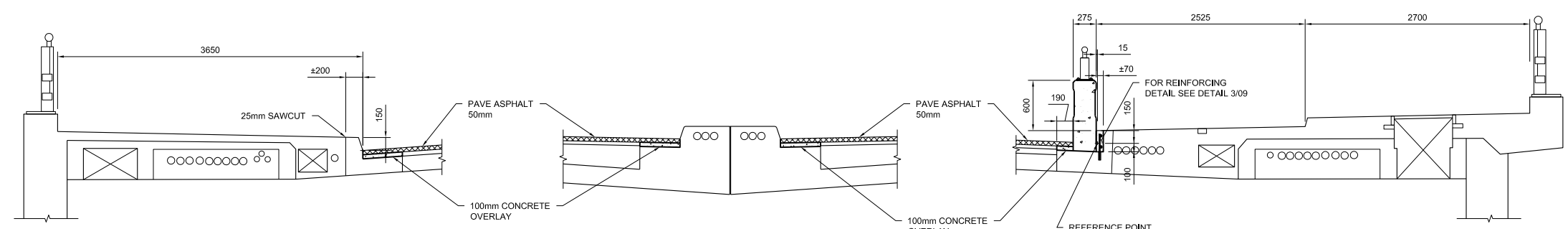


MAIN BRIDGE APPROACH SLAB PLAN - RECONSTRUCTION

1:150



SECTION A
 1:30



SECTION B
 1:30

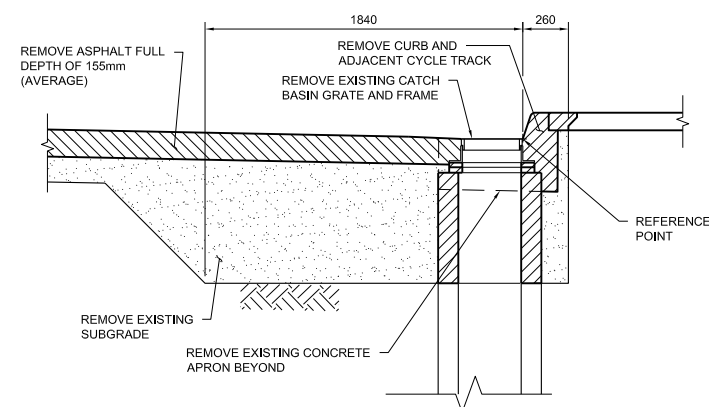
I:\NAME P:\Users\2018141-20206-16 Portage Bridge Surface Rehabilitation\3.0 Technical by Discipline\3.7 Design\3.7.17 Fig-Fig-DWG-English version\11-20096-16_BRM_11-11.dwg
 CONSULTANT MAY 22, 2018 - 2:05pm
 DRAWN BY H.L.



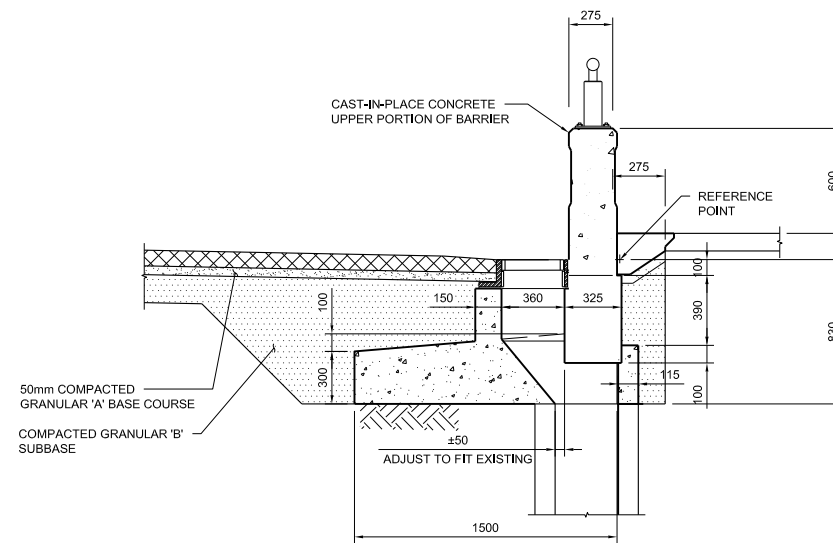
no.	description	date

**PORTAGE BRIDGE
 SURFACE REPAIRS AND
 CYCLE TRACK
 IMPROVEMENT**

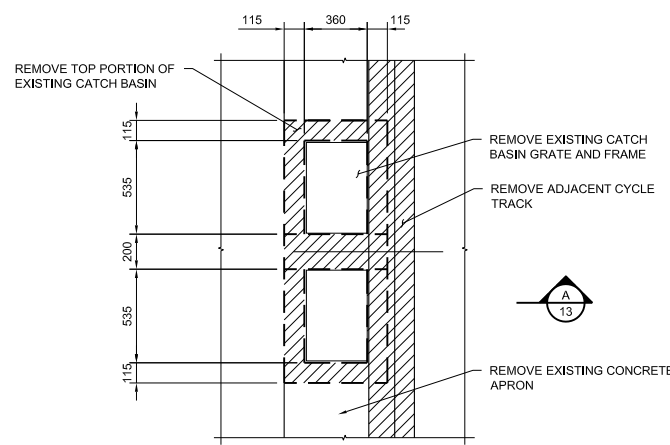
**DOUBLE CATCH BASIN
 DETAILS**



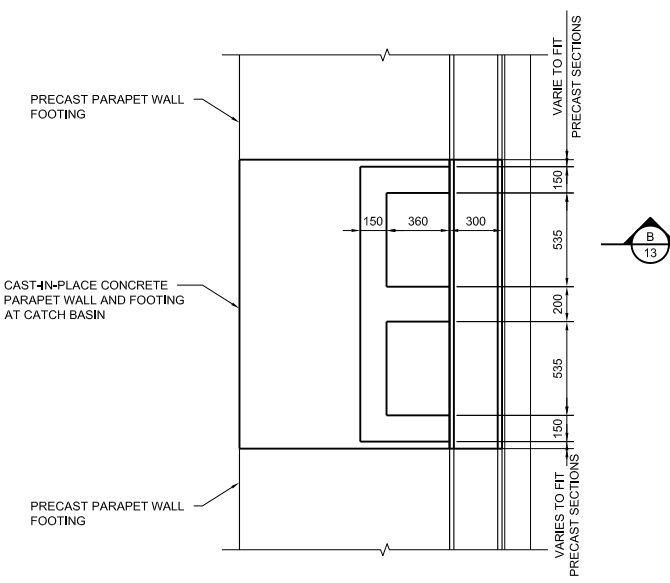
SECTION A
 1:20
 REMOVALS



SECTION B
 1:20
 RECONSTRUCTION



PLAN - DOUBLE CATCH BASIN
 1:20
 REMOVALS (1 LOCATION ON EAST SIDE OF MAIN BRIDGE)



PLAN - DOUBLE CATCH BASIN
 1:20
 RECONSTRUCTION

I:\NAME P_U\2018\14-2018-16 Portage Bridge Surface Rehabilitation\3.0 Technical (by Discipline)\3.7 Design\Figures\English version\14-2018-16_R14-13-14.dwg
 DATE: MAY 22, 2018 10:49 AM
 DRAWN BY: H.L.



no.	description	date

project/projet

PORTAGE BRIDGE
SURFACE REPAIRS AND
CYCLE TRACK
IMPROVEMENT

Drawing Title/Titre du dessin

PARAPET WALL AND
RAILING DETAILS

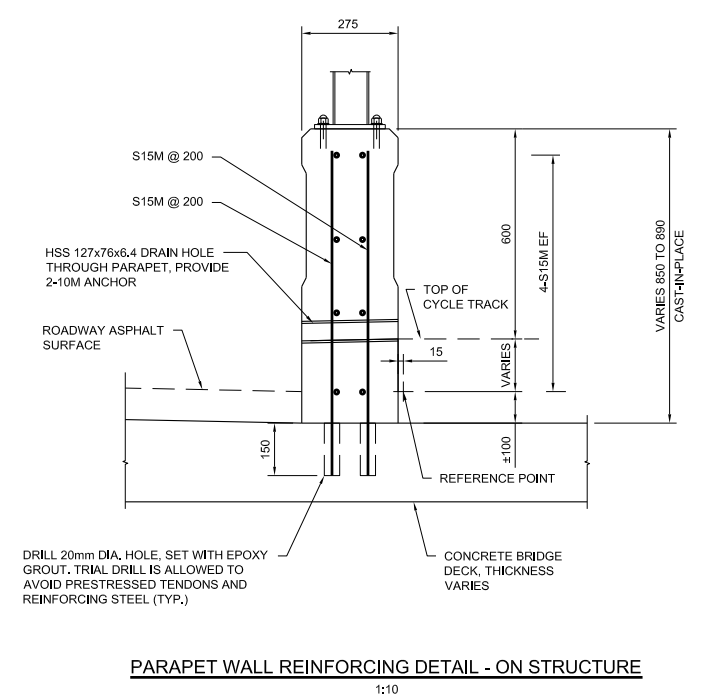
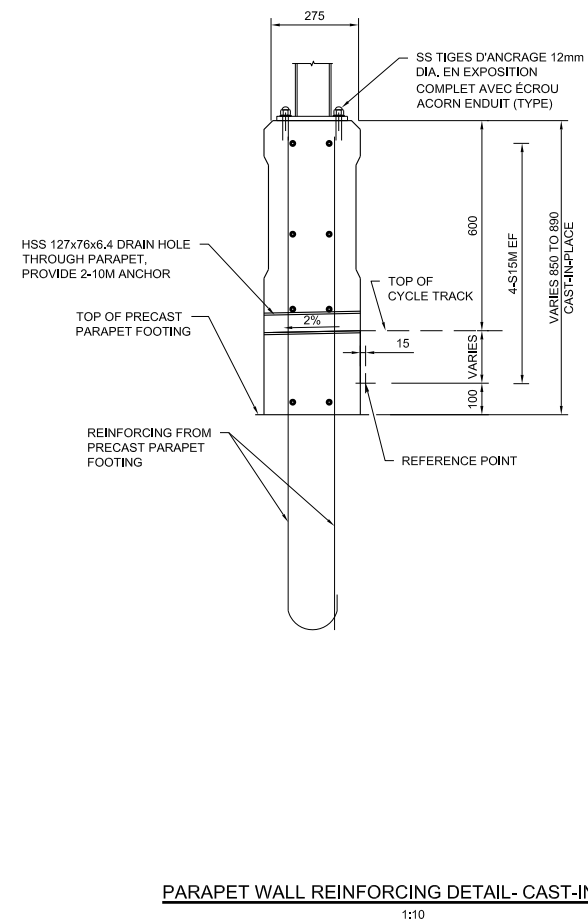
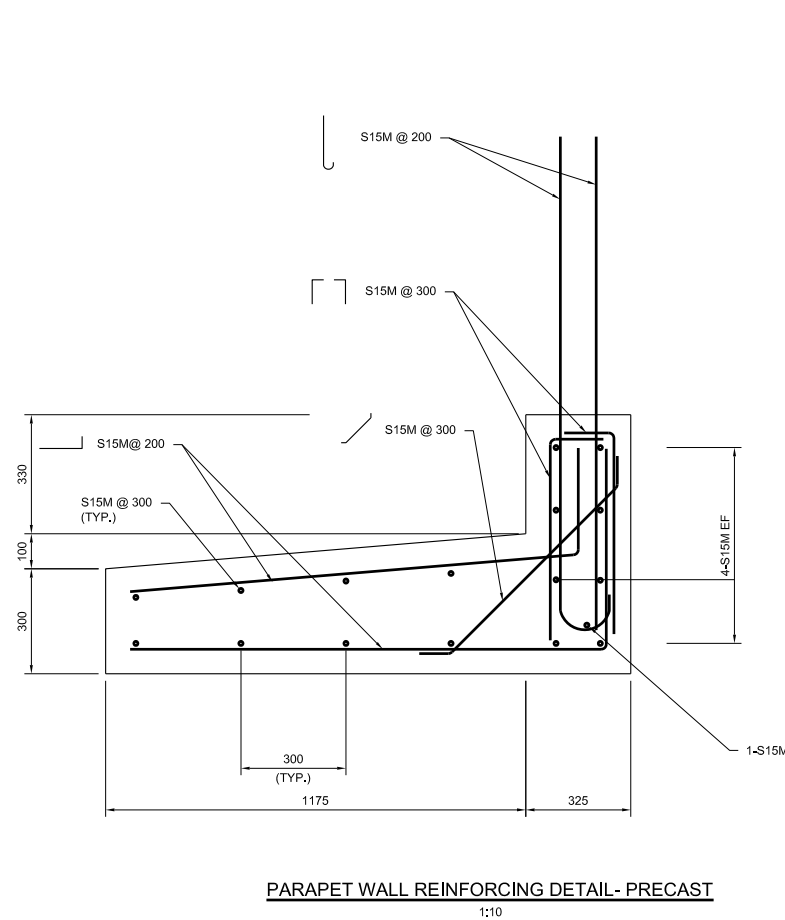
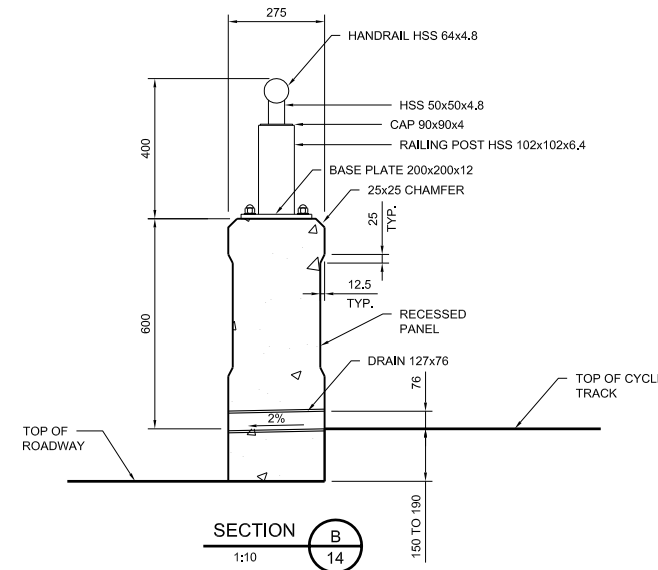
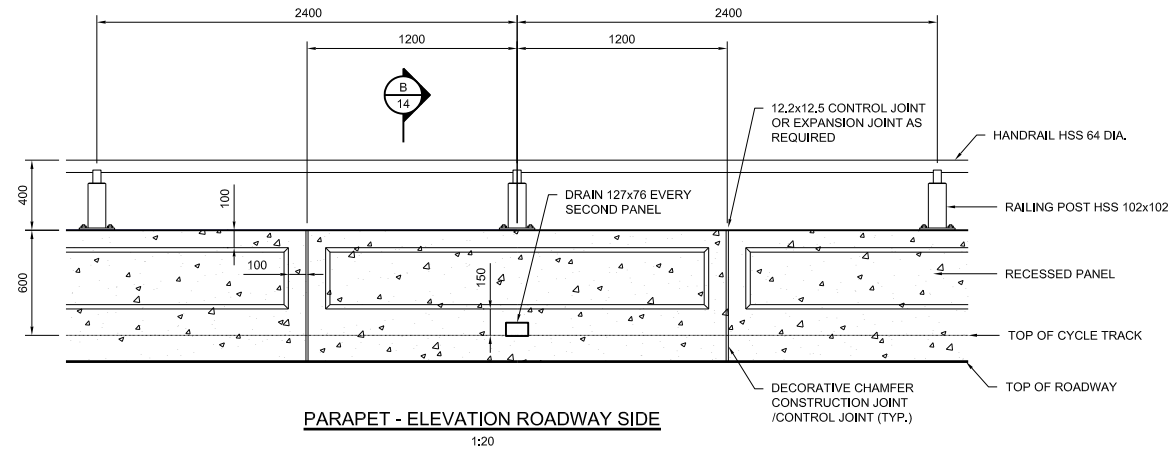
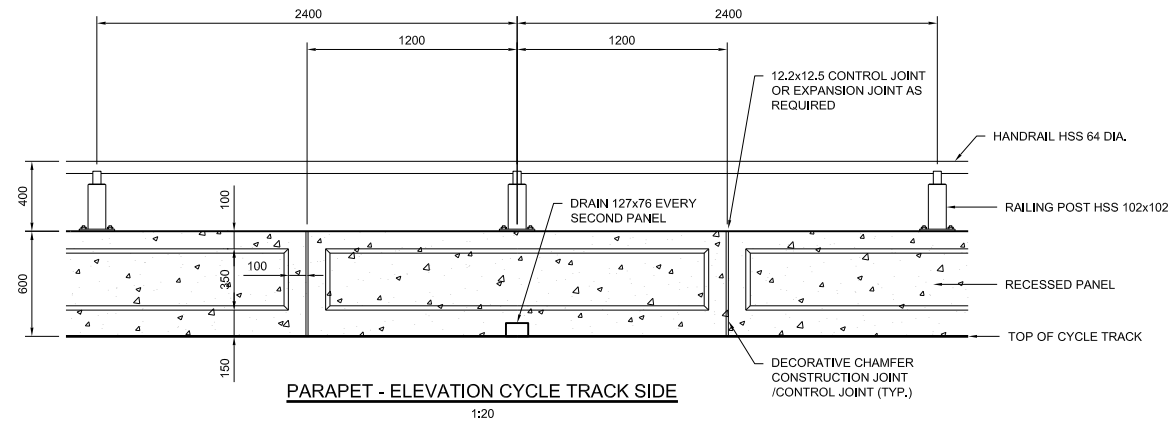
approved by
approuvé par

designed by
conçu par Z.F.W.

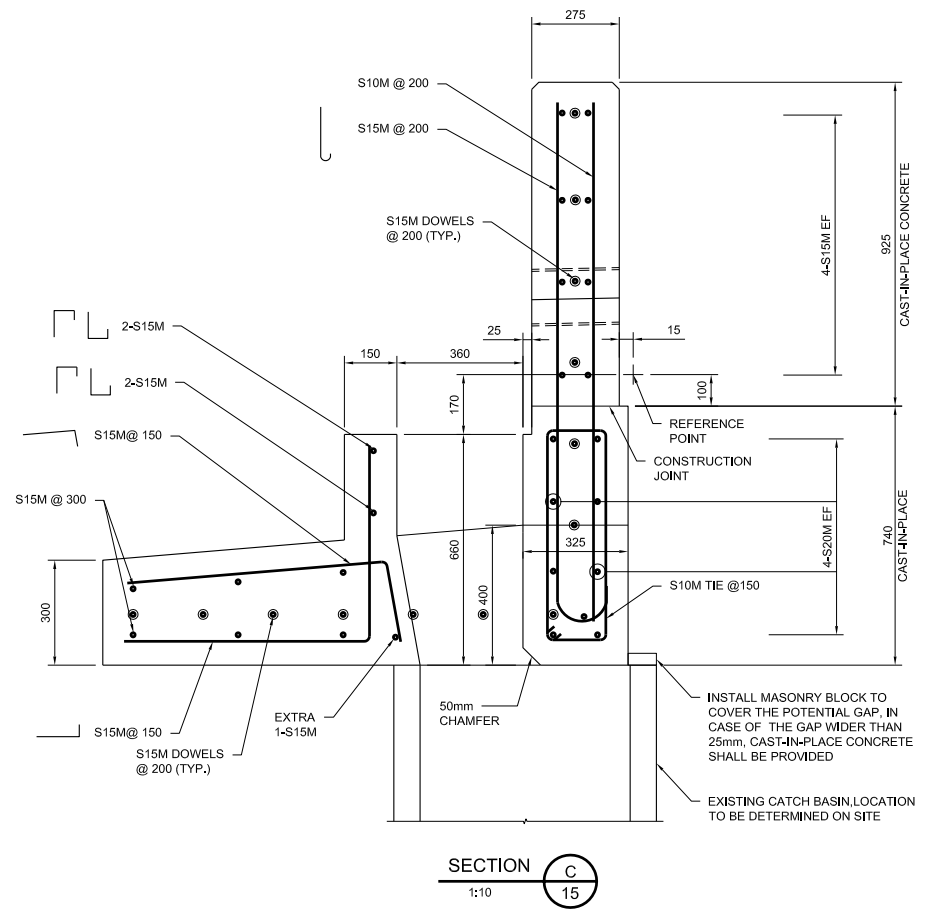
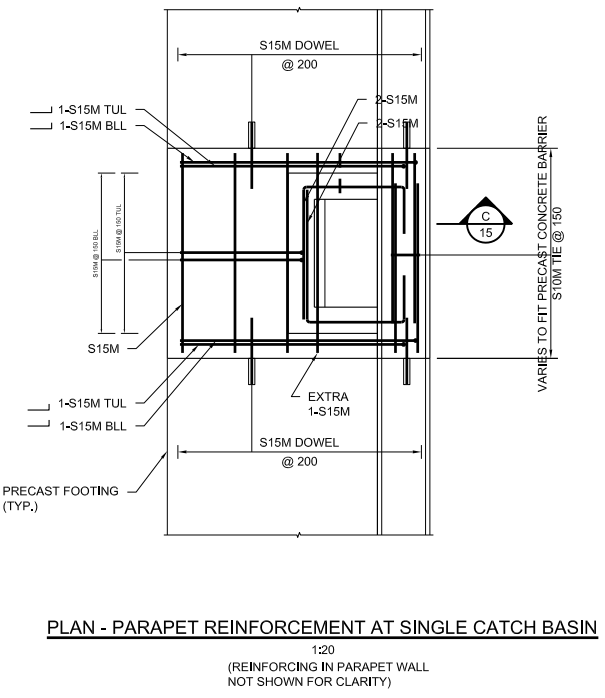
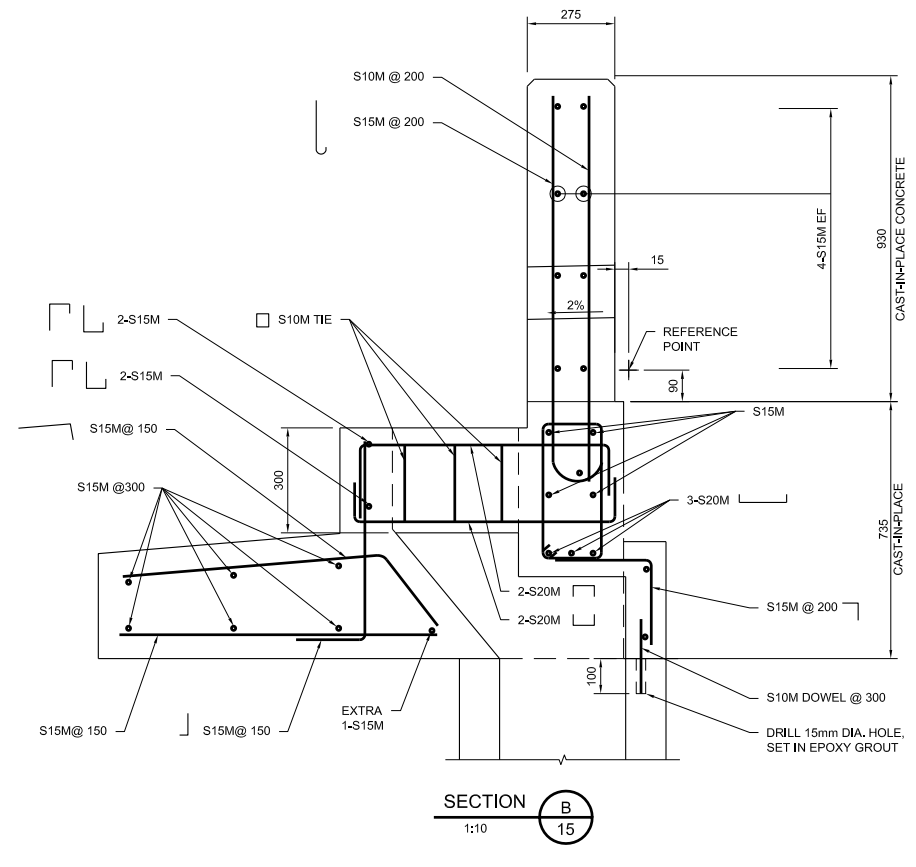
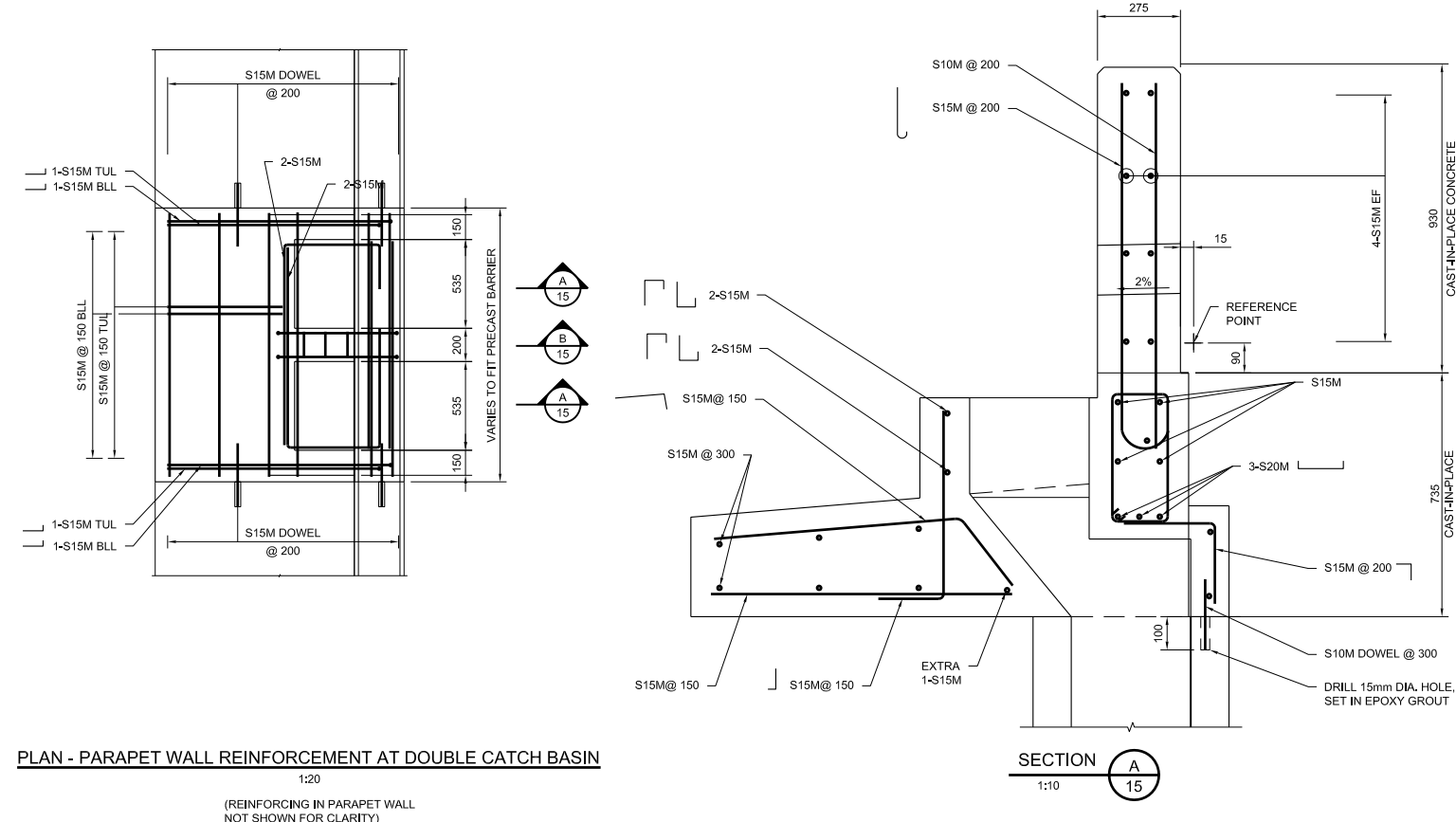
drawn by
dessiné par H.L.

date MAY 2018 scale AS / TI

NCC project no. sheet no.
no. du projet de la CCN no. de la feuille



I:\NAME P:\Users\2018141-20906-16 Portage Bridge Surface Rehabilitation\3.0 Technical By Discipline\3.7 Design\Figures English version\14-20906-16_Rail_14-M.dwg
 Created: May 22, 2018 - 4:23pm
 Drawn: H.L.



Issued or revised émis ou révisé		
no.	description	date

project/projet

**PORTAGE BRIDGE
 SURFACE REPAIRS AND
 CYCLE TRACK
 IMPROVEMENT**

**PARAPET REINFORCING
 AT CATCH BASIN**

approved by approuvé par		
designed by conçu par	Z.F.W.	
drawn by dessiné par	H.L.	
date date	MAY 2018	scale échelle AS / TI
NCC project no. no. du projet de la CCN		sheet no. no. de la feuille

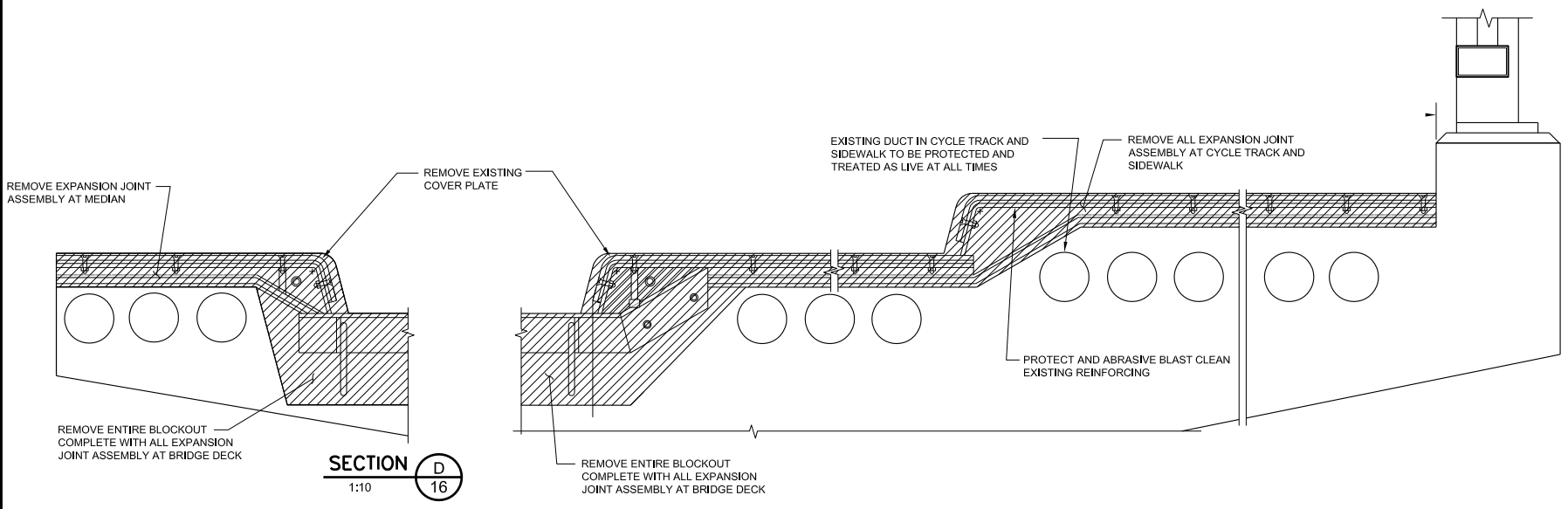
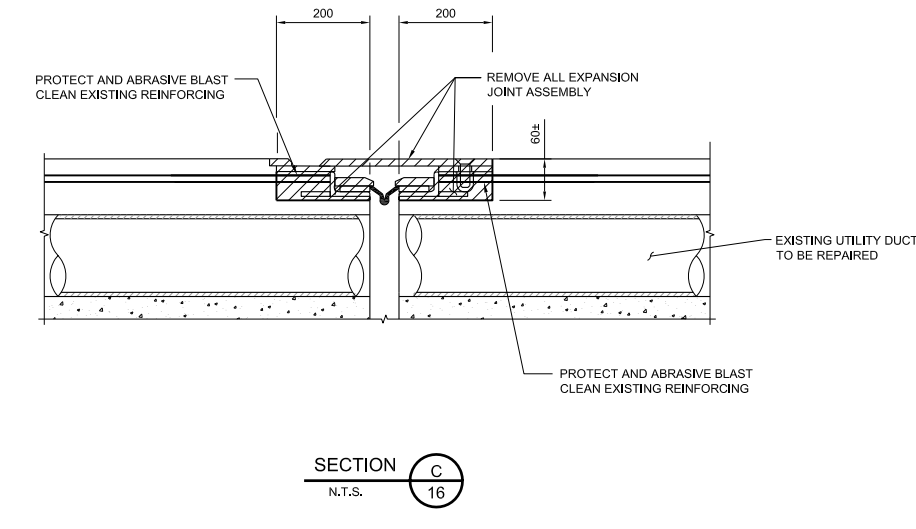
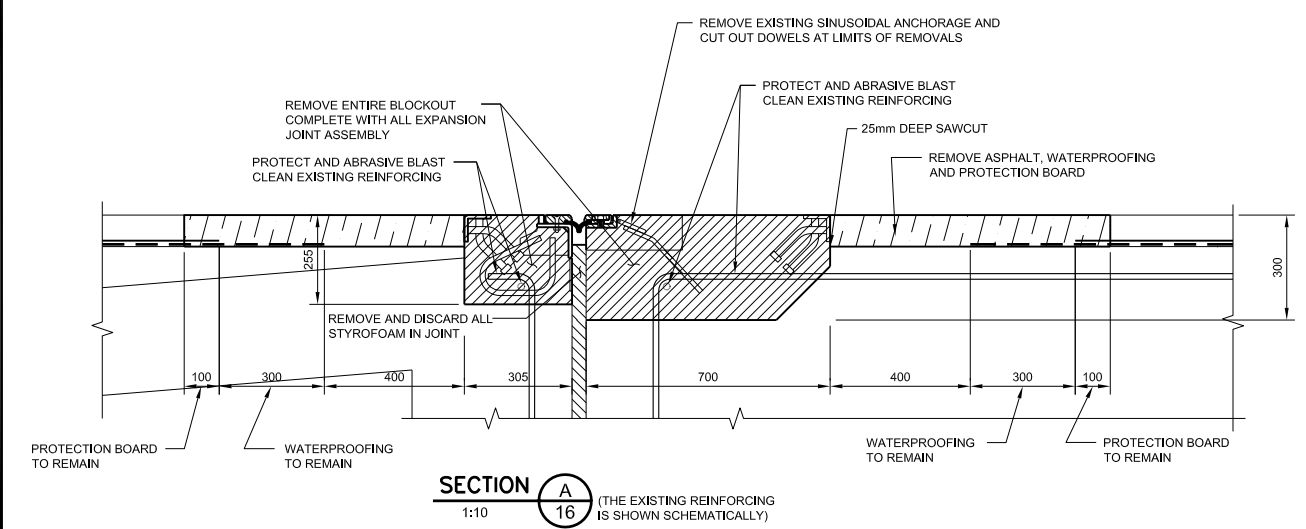
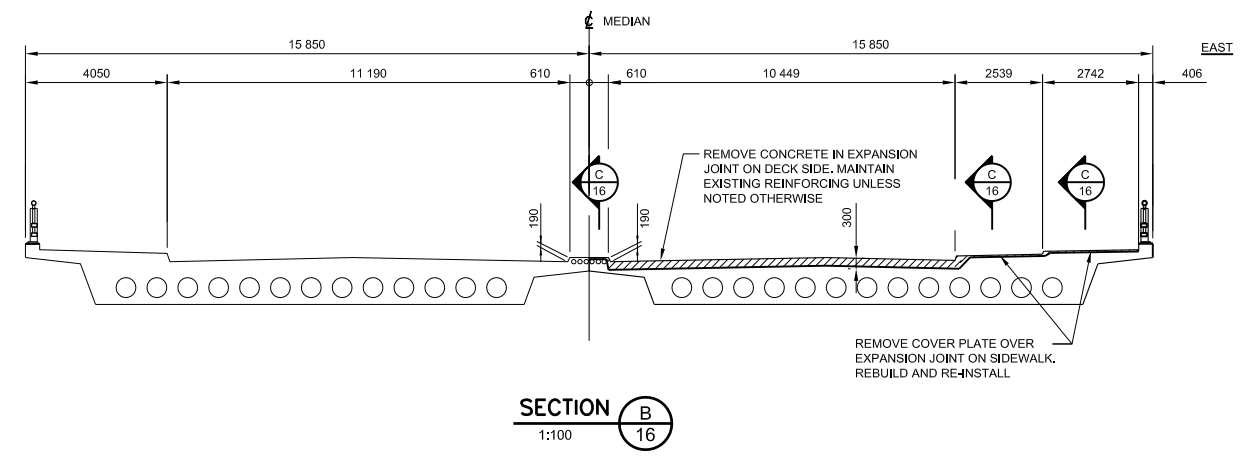
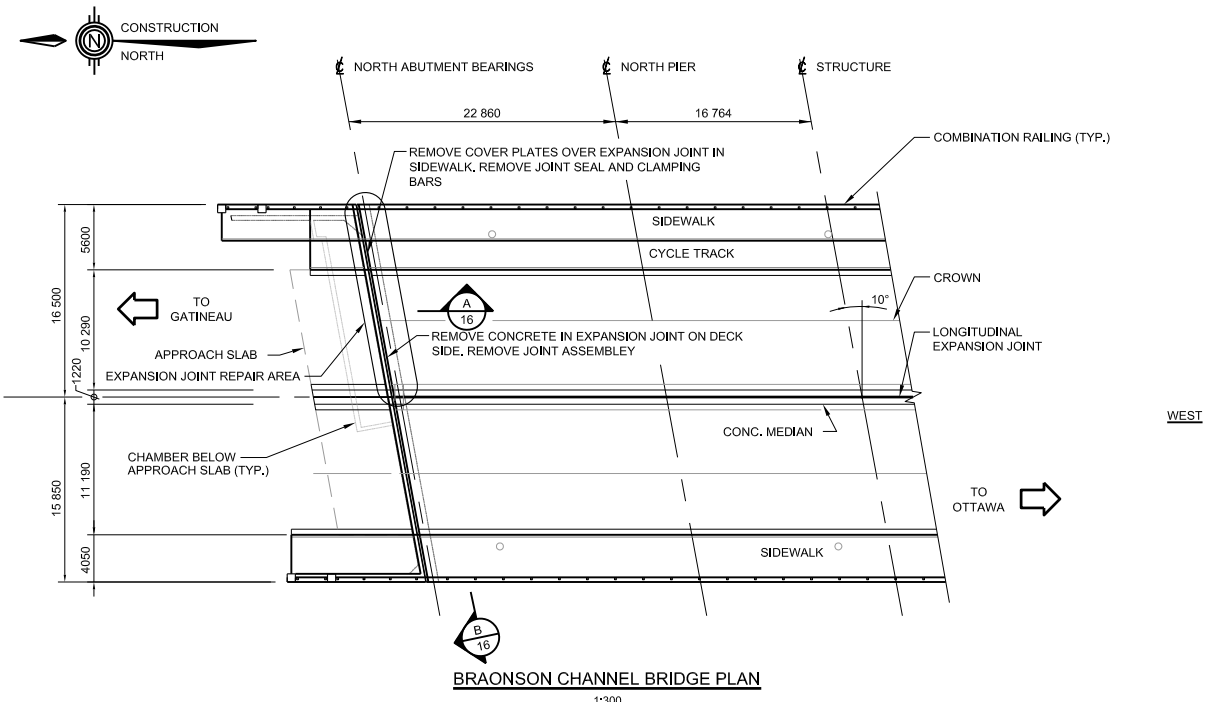
I:\NAME P.\Users\2018141-2018-16 Portage Bridge Surface Repairs and Cycle Track Improvement\11-2018-16_PRR-15-14.dwg
 DATE: MAY 22, 2018 11:45 AM
 I:\NAME P.\Users\2018141-2018-16 Portage Bridge Surface Repairs and Cycle Track Improvement\11-2018-16_PRR-15-14.dwg
 DATE: MAY 22, 2018 11:45 AM

no.	description	date

**PORTAGE BRIDGE
SURFACE REPAIRS AND
CYCLE TRACK
IMPROVEMENT**

**EXPANSION JOINT
REMOVALS**

approved by approuvé par	
designed by conçu par	Z.F.W.
drawn by dessiné par	H.L.
date	MAY 2018
scale échelle	AS / TI
NCC project no. no. du projet de la CCN	sheet no. no. de la feuille

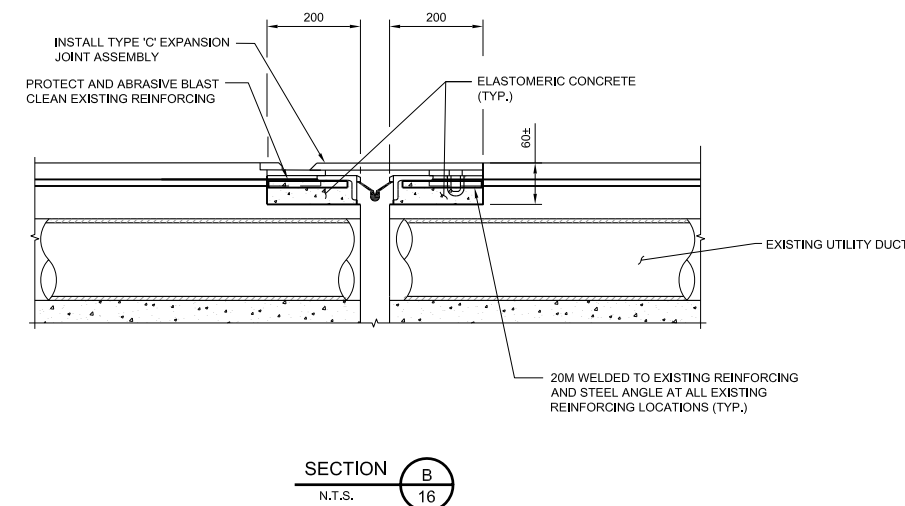
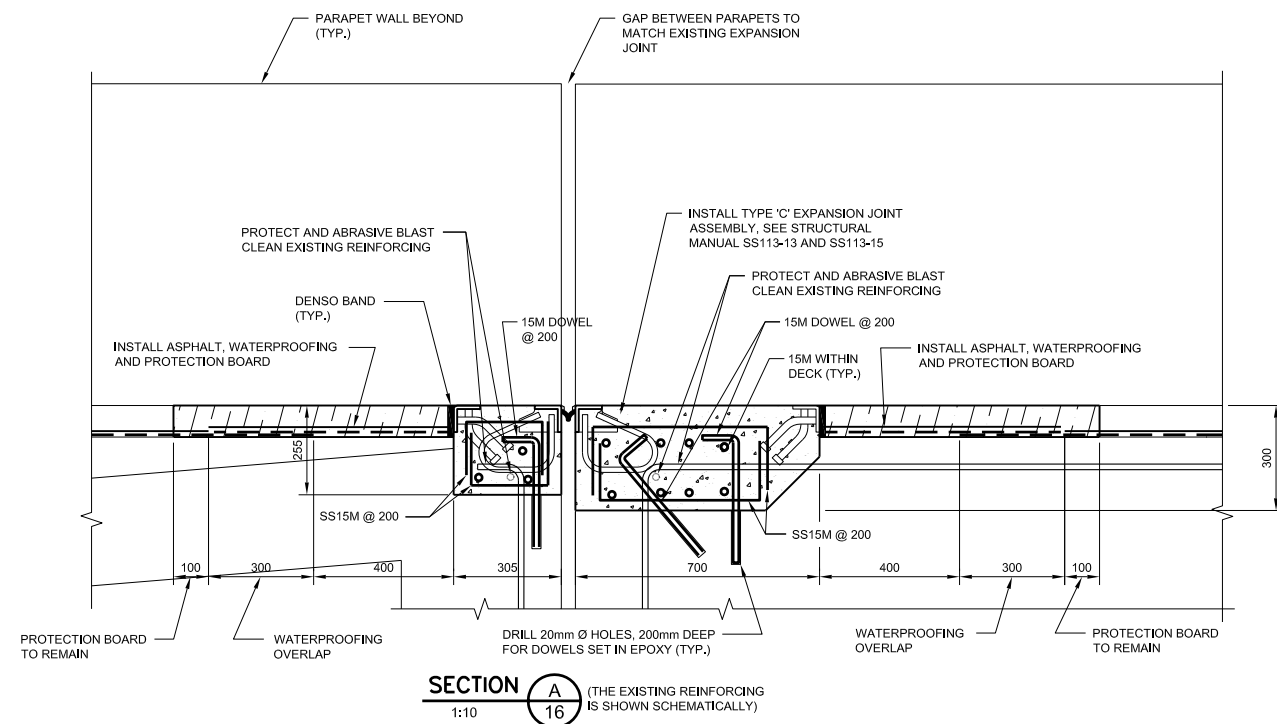


- NOTES:**
1. THE EAST CURB LANE WAS REPAIRED IN THE PAST WITH EXTENSIVE WELDING AND DOWELLING WITH INSTALLATION OF STEEL PLATES AND WILL BE VERY DIFFICULT TO REMOVE.
 2. POSTTENSIONING ANCHORS ARE PRESENT UNDER THE JOINT IN THE BACK OF THE DECK SURFACE THAT SHALL BE LEFT UNDISTURBED.
 3. ALLOW FOR CLEANING THE GAP OF THE EXPANSION JOINT AS WORK PROGRESSES
 4. THE EXISTING STYROFOAM TO BE REMOVED FULL HEIGHT OF DECK/BALLAST WALL.
 5. DUCTS ARE PRESENT IN SIDEWALK AND MEDIAN IMMEDIATELY UNDER ARMOURING.
 6. THE BOLTS OF CLAMP DOWN BARS WERE WELDED DOWN AND IMPOSSIBLE TO REMOVE WITHOUT CUTTING.
 7. THE CLAMPING BARS WERE WELDED TO ARMOURING AND WILL NEED TO BE CUT FOR REMOVALS.
 8. ALLOW VARIATION IN DEPTH OF REMOVALS AS CONDITION OF CONCRETE MAY BE POOR WITHIN EXPANSION JOINT GAP.
 9. WORK WILL NEED TO BE CARRIED OUT IN STAGES AS SUIT THE METHODOLOGY AND TRAFFIC CONTROL.
 10. IMMEDIATELY UPON AWARD, RETAIN SPECIALIZED PERSONNEL TO SURVEY THE JOINT TO RECONSTRUCT IN PROPER FITTING GEOMETRY AS REQUIRED FOR SHOP DRAWINGS PREPARATION.

I:\NAME P:\Users\2018141-20986-16 Portage Bridge Surface Rehabilitation\3.0 Technical By Discipline\3.7 Eng-Fig\DWG English version\141-20986-16_BRM-16-14.dwg
 DATE: MAY 22, 2018 9:45:30 AM
 DRAWN BY: H.L.

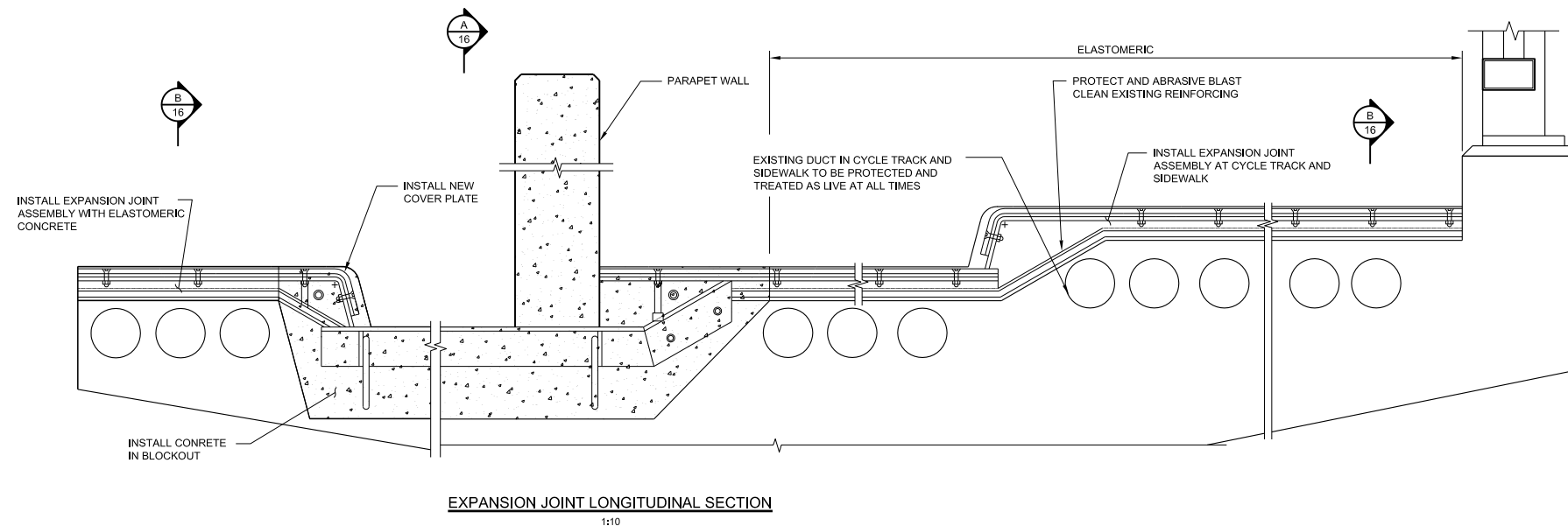
NOTES:

1. ELECTROMETRIC CONCRETE IS REQUIRED OVER BICYCLE TRACK AND SIDEWALK.
2. NEW JOINT CLASS C, GAP TO MATCH THE GAP ON THE JOINT OVER SBL AT THE TIME OF INSTALLATION. ALL COMPONENTS TO BE HOT DIP GALVANIZED.
3. THE NEW ASSEMBLY TO BE AS PER STANDARD MTO DRAWINGS FOR CLASS C JOINT AS AMENDED IN THE CONTRACT.
4. THE ARRANGEMENT OF NEW REINFORCING STEEL IS SHOWN SCHEMATIC ONLY AS IT WILL REQUIRE BEST FIT AND ARRANGEMENT TO FIT THE NEW JOINTS, DOWELS AND EXISTING EXPOSED REINFORCING STEEL.
5. ALL EXISTING REINFORCING STEEL SHALL BE PRESERVED WHERE POSSIBLE.
6. THE INSTALLATION WILL BE IN STAGES AS REQUIRED TO SUIT TRAFFIC CONTROL AND STAGING, THE WELDED CONSTRUCTION JOINTS TO BE OF DOUBLE STRENGTH TO NORMALLY UTILIZED DUE TO EXTREME LOADS BY TRAFFIC ON THIS JOINT.



SECTION A
1:10 (THE EXISTING REINFORCING IS SHOWN SCHEMATICALLY)

SECTION B
N.T.S.



EXPANSION JOINT LONGITUDINAL SECTION
1:10

Issued or revised
émis ou révisé

no.	description	date

project/projet

**PORTAGE BRIDGE
SURFACE REPAIRS AND
CYCLE TRACK
IMPROVEMENT**

Drawing Title/Titre du dessin

**EXPANSION JOINT
REPAIRS**

approved by
approuvé par

designed by
conçu par Z.F.W.

drawn by
dessiné par H.L.

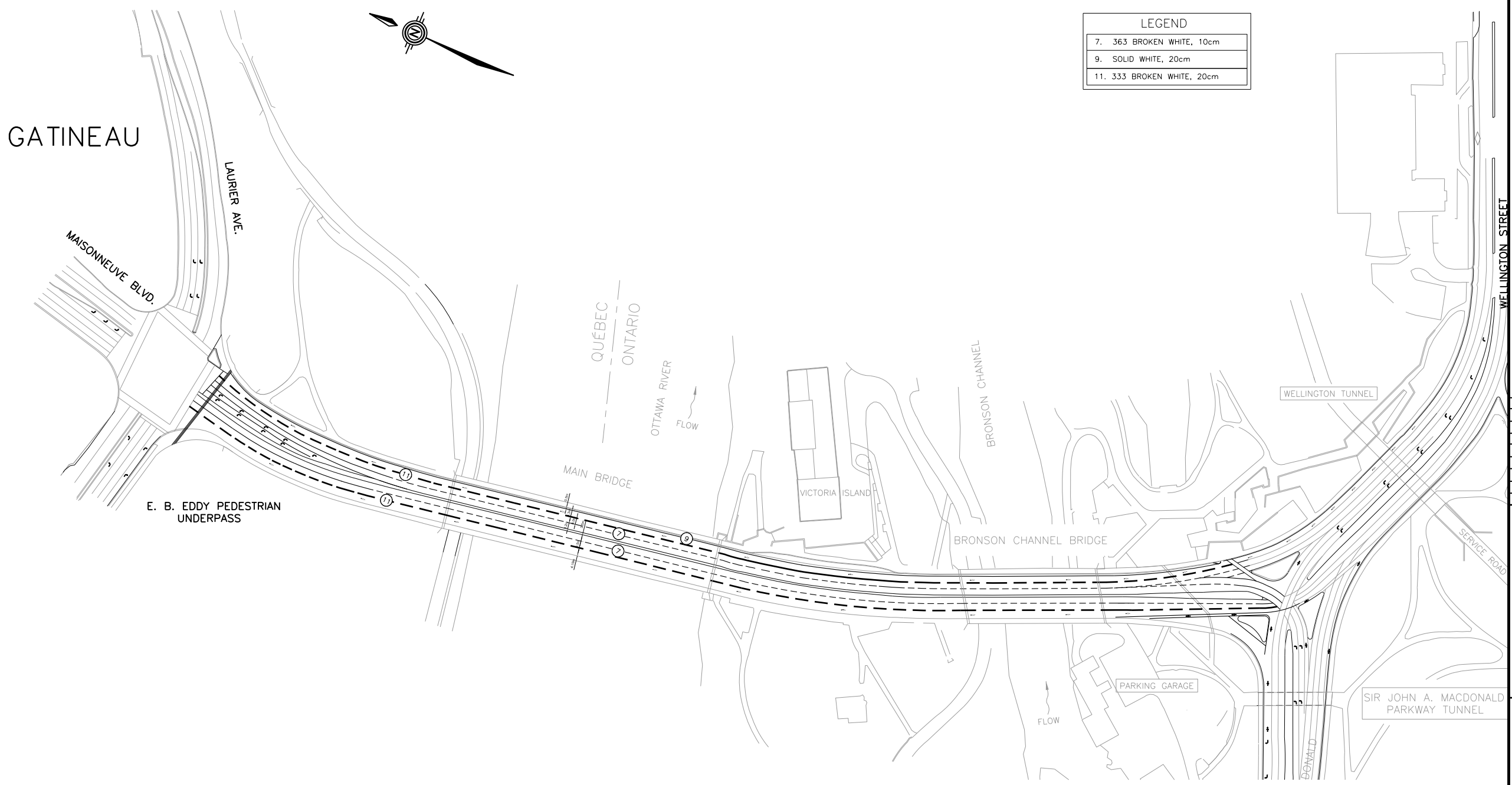
date MAY 2018 scale AS / TI
échelle

NCC project no. sheet no.
no. du projet de la CCN no. de la feuille

NOTES:

1. CONTRACTOR SHALL INVENTORY ALL LINES TYPES, LOCATION, SYMBOLS, COLOURS AND REPLICATE THESE ON COMPLETED ASPHALT SURFACE.
2. CONTRACTOR SHALL OBLITERATE EXISTING AND INSTALL TEMPORARY PAVEMENT MARKINGS AS REQUIRED FRO TRAFFIC CONTROL PLAN.
3. CONTRACTOR SHALL OBLITERATE TEMPORARY PAVEMENT MARKINGS AND INSTALL TEMPORARY PAVEMENT MARKINGS AS WORK PROGRESSES.
4. TEMPORARY PAVEMENT MARKINGS IN FINAL LOCATION SHALL BE PLACED AS FINAL COURSE OF ASPHALT IS PLACED.
5. FOLLOWING THE PAVEMENT OF TOP COURSE OF ASPHALT THE SURFACE SHALL BE FREE FROM ANY PAVEMENT MARKING IMPERFECTIONS AND STAINS AND SMUDGES WITH ONLY PERMANENT PAVEMENT MARKINGS VISIBLE.
6. CONTRACTOR SHALL PROVIDE ALL NECESSARY PHYSICAL BARRICADES TO ASSURE SEPARATION AS WELL AS ALL REQUIRED PROTECTION TO PEDESTRIANS FROM ALL CONSTRUCTION ACTIVITIES AND RISKS ON EAST SIDEWALK.
7. CONTRACTOR SHALL PROVIDE ALL NECESSARY PHYSICAL BARRICADES TO ASSURE SEPARATION AS WELL AS ALL REQUIRED PROTECTION TO PEDESTRIANS FROM ALL CONSTRUCTION ACTIVITIES AND RISKS ON EAST SIDEWALK.

LEGEND	
7.	363 BROKEN WHITE, 10cm
9.	SOLID WHITE, 20cm
11.	333 BROKEN WHITE, 20cm



Issued or revised émis ou révisé		

no.	description	date

project/projet

**PORTAGE BRIDGE
 SURFACE REPAIRS AND
 CYCLE TRACK
 IMPROVEMENT**

Drawing Title/Titre du dessin

PAVEMENT MARKING

approved by approuvé par	
designed by conçu par	Z.F.W.
drawn by dessiné par	H.L.
date	MAY 2018 scale échelle AS / TI
NCC project no. no. du projet de la CCN	sheet no. no. de la feuille

\\ENRAME_P\Mapa2018\141-20206-16 Portage Bridge Surface Reconstruction\3.0 Technical By Decision\3.17 Prop-Fig\Draws_Engin\141-20206-16_BM_16-14.dwg
 Created: May 22, 2018 - 2:58pm
 Drawn: H.L.



Issued or revised
émis ou révisé

no.	description	date

project/projet

**PORTAGE BRIDGE
SURFACE REPAIRS AND
CYCLE TRACK
IMPROVEMENT**

Drawing Title/Titre du dessin

**PEDESTRIAN/CYCLIST
DETOUR PLAN**

approved by
approuvé par

designed by
conçu par

Z.F.W.

drawn by
dessiné par

H.L.

date

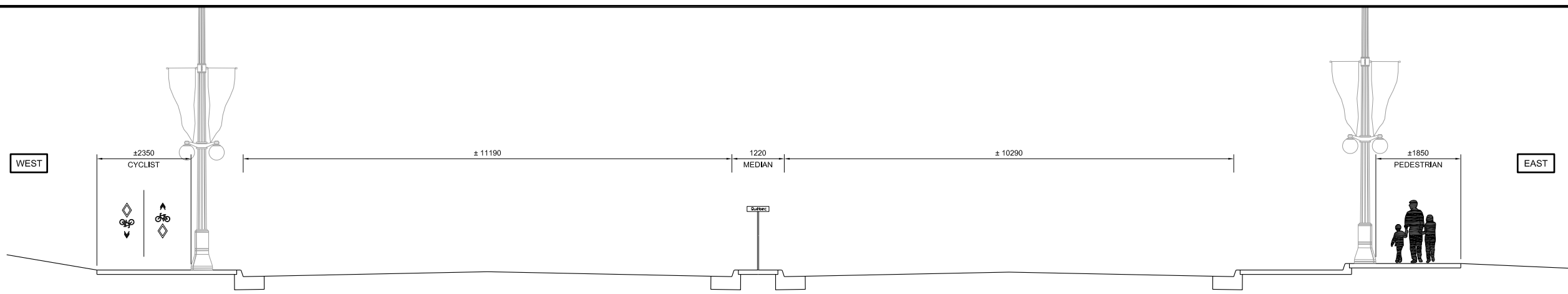
MAY 2018

scale
échelle

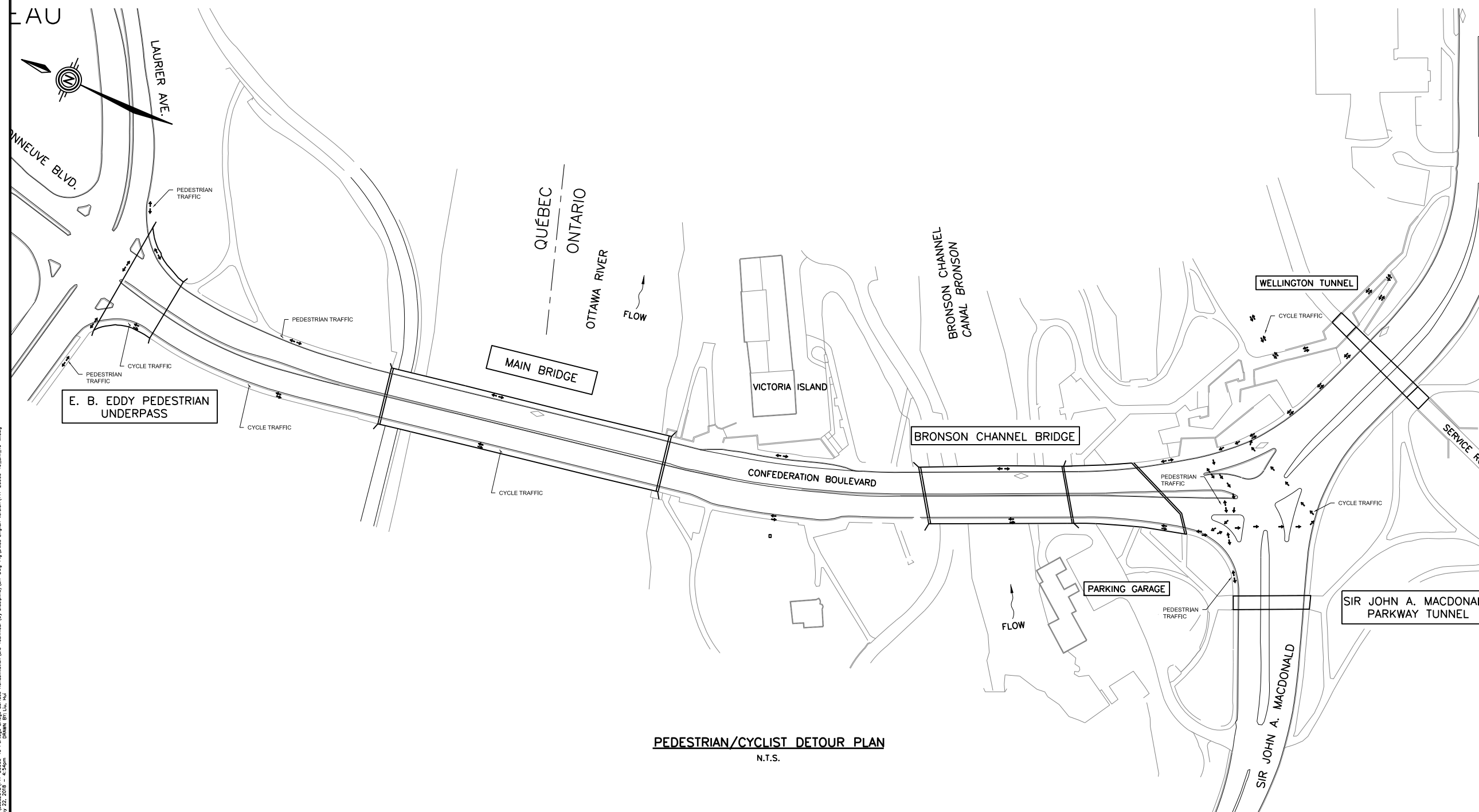
AS / TI

NCC project no.
no. du projet de la CCN

sheet no.
no. de la feuille



CROSS SECTION - PEDESTRIAN/CYCLIST DETOUR
1:50



PEDESTRIAN/CYCLIST DETOUR PLAN
N.T.S.

I:\NAME P:\data\2018\141-2096-16 Portage Bridge Surface Rehabilitation\3.0 Technical (by Discipline)\3.7 Eng-Fig\DWG_Engin version\141-2096-16_BRM_19-14.dwg
 Created: May 22, 2018 - 2:45pm
 Drawn: H.L.