

GENERAL NOTES:

FABRIC / LINER NOTES:

EXTERIOR FABRIC WILL DEFLECT UNDER LOAD, THEREFORE ALL BUILDING ACCESSORIES (LIGHTING, HVAC, SPRINKLERS, ETC) MUST BE LOCATED BENEATH THE INNER CHORD OF THE TRUSS. ANYTHING ABOVE THIS MUST BE REVIEWED AND APPROVED IN WRITING BY BUILDING MANUFACTURER SEVERE DAMAGE TO THE BUILDING AND ACCESSORIES MAY RESULT FROM FAILURE TO COMPLY WITH THIS REQUIREMENT.

MATERIAL STORAGE:

MATERIAL STORED ON SITE PRIOR TO ERECTION SHOULD BE STORED IN A MANNER TO PREVENT PHYSICAL DAMAGE OR DETERIORATION.

MISSING / DAMAGED MATERIAL

ANY MISSING OR DAMAGED MATERIAL MUST BE REPORTED IMMEDIATELY TO THE ENGINEER.

NOTES:

1. REQUIRED BEARING CAPACITY FOR BUILDING AND FOUNDATION 3132 psf (150 kpa)
2. ENSURE THAT PROPER BRACING & SUPPORT IS PROVIDED DURING ERECTION TO PREVENT COLLAPSE OR DAMAGE
3. 1" DIA. WEDGE ANCHORS EMBEDDED 12" INTO CONCRETE BLOCK.
4. CONCRETE BLOCKS TO HAVE A MINIMUM COMPRESSIVE STRENGTH OF 25 MPa F2 4%-7% AIR ENTRAINED
5. CONCRETE BLOCK FOUNDATION SITING ON EXISTING UNDISTURBED SOIL BASE

DESIGN NOTES:

- | | |
|-----------------------|--------------------------|
| 1.) SNOW LOAD (1/50): | 1.4 kpa (1/50) 29.2 psf |
| RAIN LOAD (1/50): | 0.1 kpa (1/50) 2.1 psf |
| WIND LOAD (1/50): | 0.49 kpa (1/50) 10.2 psf |

LOAD CASE:	SIDE A				SIDE B			
	HORIZONTAL		VERTICAL		HORIZONTAL		VERTICAL	
	X _A (kips)	X _A (kN)	Y _A (kips)	Y _A (kN)	X _B (kips)	X _B (kN)	Y _B (kips)	Y _B (kN)
DEAD	0.60	2.67	1.24	5.52	-0.60	-2.67	1.24	5.52
LIVE	13.79	61.36	25.03	111.35	-13.79	-61.36	25.06	111.49
SNOW BALANCED	13.15	58.50	23.86	106.15	-13.15	-58.50	23.89	106.29
SNOW UNBALANCED	9.64	42.88	8.31	36.97	-9.64	-42.88	26.72	118.89
WIND: PERPENDICULAR	2.61	11.60	17.79	79.16	-6.95	-30.91	10.84	48.21
WIND: PARALLEL	-10.89	-48.45	-29.46	-131.07	10.89	48.46	-25.92	-115.33

Note:
Negative values of Y reactions indicates uplift forces.

LOADING CHART

SCALE: NOT TO SCALE

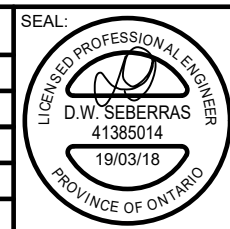
LEGAL:

THIS DRAWING IS PROPERTY OF SEBERRAS PROFESSIONAL SERVICES INC. AND REPRODUCTION IN WHOLE OR IN PART WITHOUT THE EXPRESSED WRITTEN CONSENT OF SEBERRAS PROFESSIONAL SERVICES INC. IS PROHIBITED.

ANY DISCREPANCY OR CONCERNS WITH RESPECT TO THIS DRAWING IS TO BE REPORTED TO THE ENGINEER IMMEDIATELY.

DRAWING NOT TO SCALE UNLESS NOTED OTHERWISE.

2.	ISSUED FOR BUILDING PERMIT	19/03/18
1.	ISSUED FOR GENERAL REVIEW	16/03/18



CHECKED BY:

D.S.

FIRM BCIN:

30361

DRAWN BY:

B.B.

ENGINEERING BY:

SEBERRAS PROFESSIONAL SERVICES LTD.

CELL: (905) 536-7144
FAX: (519) 448-4801
EMAIL: dseberras@hotmail.com

CUSTOMER ADDRESS:
RCMP ACADEMY - DEPOT DIVISION
5600 - 11 AVENUE
REGINA, SASKATCHEWAN

PROJECT:
100' x 220' CONCRETE BLOCK FOUNDATION

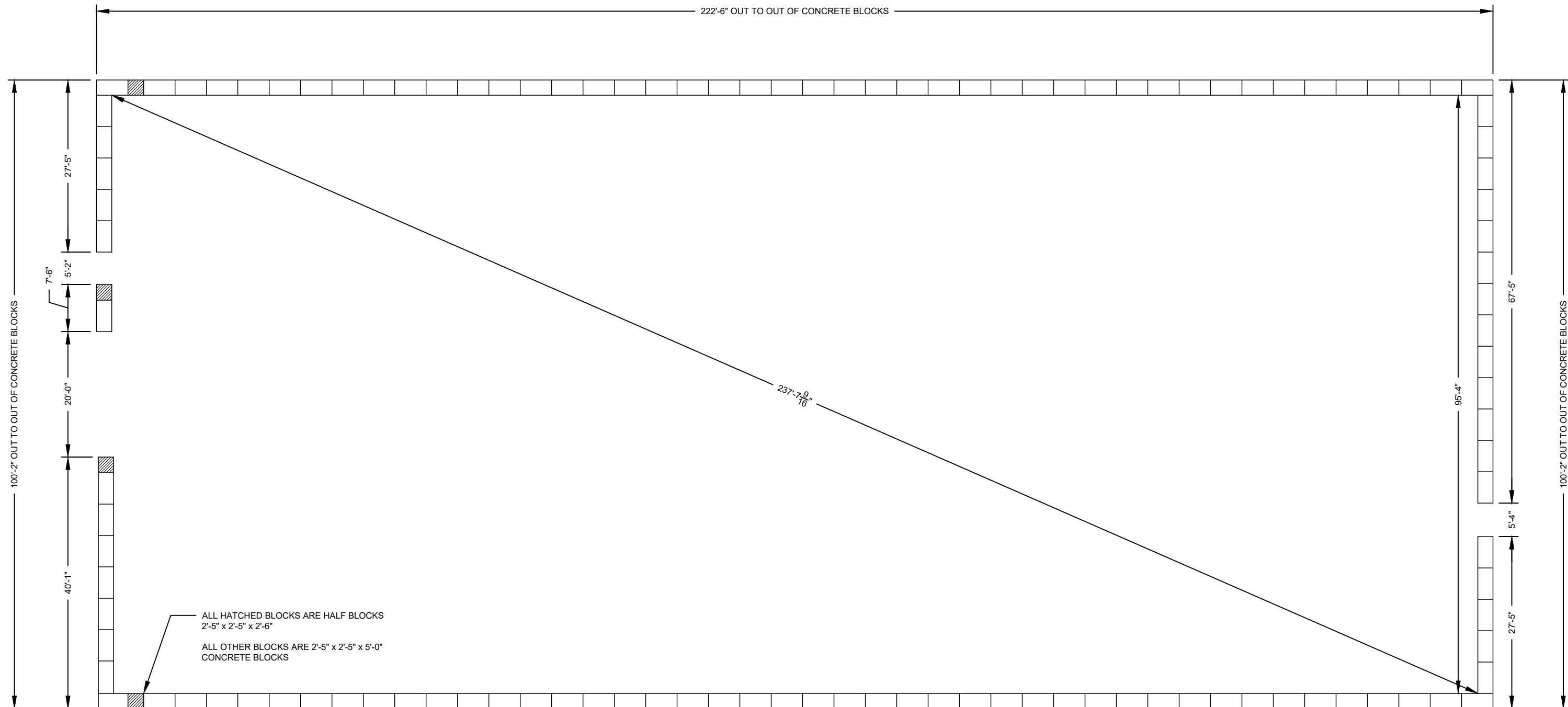
DRAWING TITLE:

NOTES

PROJECT NO.:
18353

SCALE:
N/A

SHEET:
S-1



ALL HATCHED BLOCKS ARE HALF BLOCKS
2'-5" x 2'-5" x 2'-6"

ALL OTHER BLOCKS ARE 2'-5" x 2'-5" x 5'-0"
CONCRETE BLOCKS

LEGAL:
THIS DRAWING IS PROPERTY OF SEBERRAS PROFESSIONAL SERVICES INC. AND REPRODUCTION IN WHOLE OR IN PART WITHOUT THE EXPRESSED WRITTEN CONSENT OF SEBERRAS PROFESSIONAL SERVICES INC. IS PROHIBITED.

ANY DISCREPANCY OR CONCERNS WITH RESPECT TO THIS DRAWING IS TO BE REPORTED TO THE ENGINEER IMMEDIATELY.

DRAWING NOT TO SCALE UNLESS NOTED OTHERWISE.

2.	ISSUED FOR BUILDING PERMIT	19/03/18
1.	ISSUED FOR GENERAL REVIEW	16/03/18



CHECKED BY:
D.S.

FIRM BCIN:
30361

DRAWN BY:
B.B.

ENGINEERING BY:
SEBERRAS PROFESSIONAL SERVICES LTD.

CELL: (905) 536-7144
FAX: (519) 448-4801
EMAIL: dseberras@hotmail.com

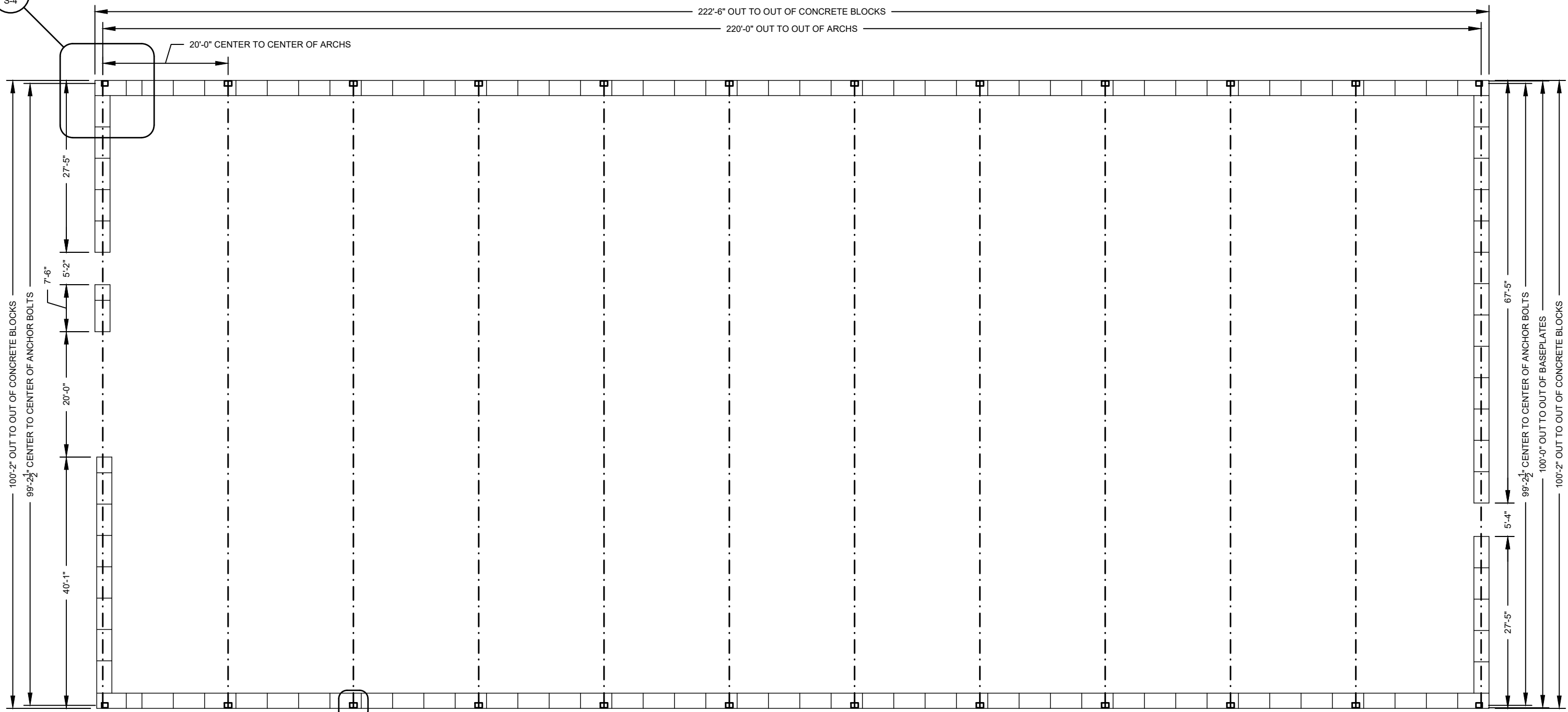
CUSTOMER ADDRESS:
RCMP ACADEMY - DEPOT DIVISION
5600 - 11 AVENUE
REGINA, SASKATCHEWAN

PROJECT:
100' x 220' CONCRETE BLOCK FOUNDATION

DRAWING TITLE:
GROUND BLOCK LAYER PLACEMENT

PROJECT NO.: **18353** SCALE: **1/16" = 1'-0"** SHEET: **S-2**

D1
S-4



D2
S-5

LEGAL:
THIS DRAWING IS PROPERTY OF SEBERRAS PROFESSIONAL SERVICES INC. AND REPRODUCTION IN WHOLE OR IN PART WITHOUT THE EXPRESSED WRITTEN CONSENT OF SEBERRAS PROFESSIONAL SERVICES INC. IS PROHIBITED.
ANY DISCREPANCY OR CONCERNS WITH RESPECT TO THIS DRAWING IS TO BE REPORTED TO THE ENGINEER IMMEDIATELY.
DRAWING NOT TO SCALE UNLESS NOTED OTHERWISE.

2.	ISSUED FOR BUILDING PERMIT	19/03/18
1.	ISSUED FOR GENERAL REVIEW	16/03/18

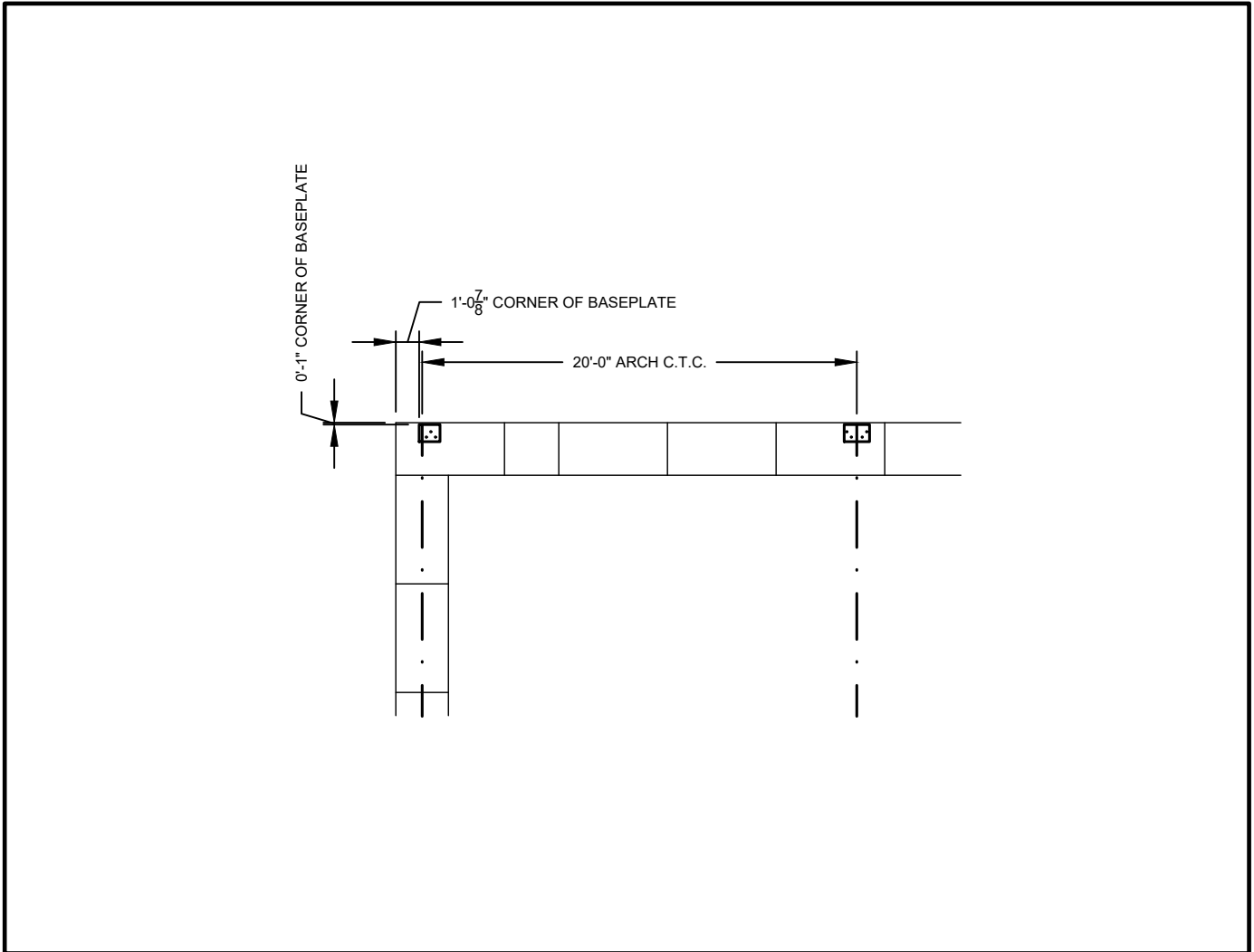


CHECKED BY:
D.S.
FIRM BCIN:
30361
DRAWN BY:
B.B.

ENGINEERING BY:
SEBERRAS PROFESSIONAL SERVICES LTD.
CELL: (905) 536-7144
FAX: (519) 448-4801
EMAIL: dseberras@hotmail.com

CUSTOMER ADDRESS:
RCMP ACADEMY - DEPOT DIVISION
5600 - 11 AVENUE
REGINA, SASKATCHEWAN
PROJECT:
100' x 220' CONCRETE BLOCK FOUNDATION

DRAWING TITLE:
GROUND BLOCK LAYER
PROJECT NO.: 18353
SCALE: 1/16" = 1'-0"
SHEET: S-3



DETAIL 1: BASEPLATE STARTING POSITION (TOP LEFT CORNER) SECOND LAYER
 SCALE: 1/8" = 1'-0"

LEGAL:
 THIS DRAWING IS PROPERTY OF SEBERRAS PROFESSIONAL SERVICES INC. AND REPRODUCTION IN WHOLE OR IN PART WITHOUT THE EXPRESSED WRITTEN CONSENT OF SEBERRAS PROFESSIONAL SERVICES INC. IS PROHIBITED.
 ANY DISCREPANCY OR CONCERNS WITH RESPECT TO THIS DRAWING IS TO BE REPORTED TO THE ENGINEER IMMEDIATELY.
 DRAWING NOT TO SCALE UNLESS NOTED OTHERWISE.

2.	ISSUED FOR BUILDING PERMIT	19/03/18
1.	ISSUED FOR GENERAL REVIEW	16/03/18

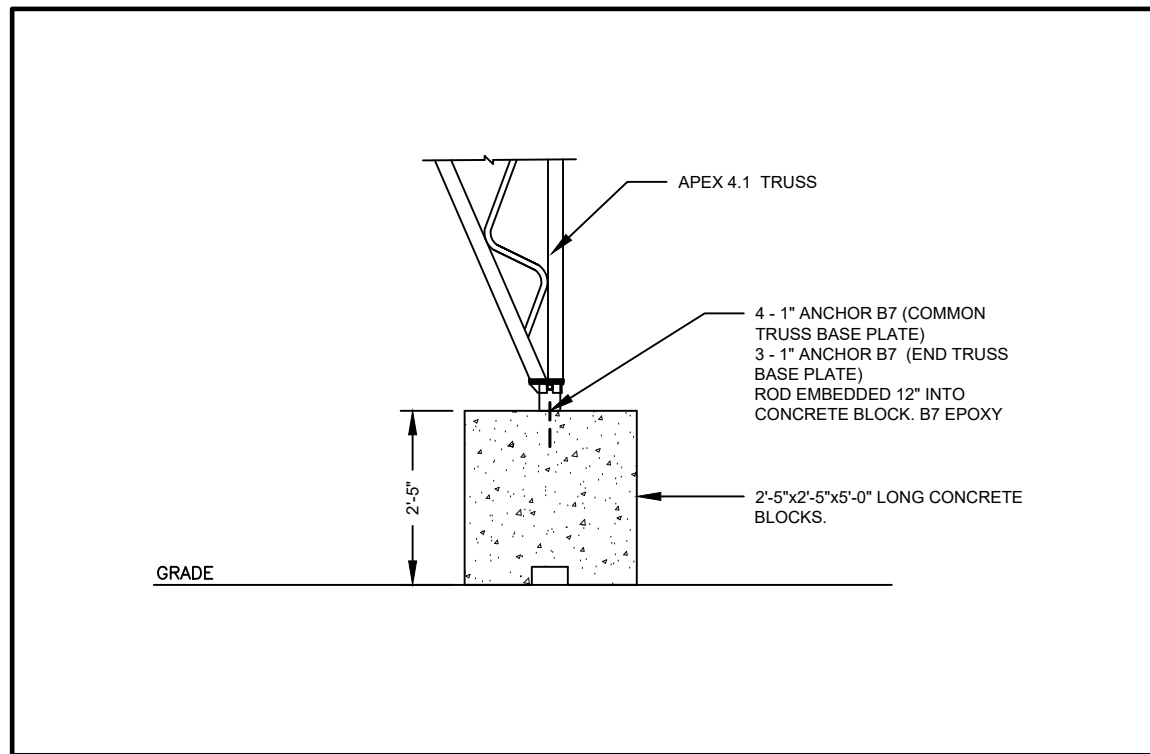


CHECKED BY:
D.S.
 FIRM BCIN:
30361
 DRAWN BY:
B.B.

ENGINEERING BY:
SEBERRAS PROFESSIONAL SERVICES LTD.
 CELL: (905) 536-7144
 FAX: (519) 448-4801
 EMAIL: dseberras@hotmail.com

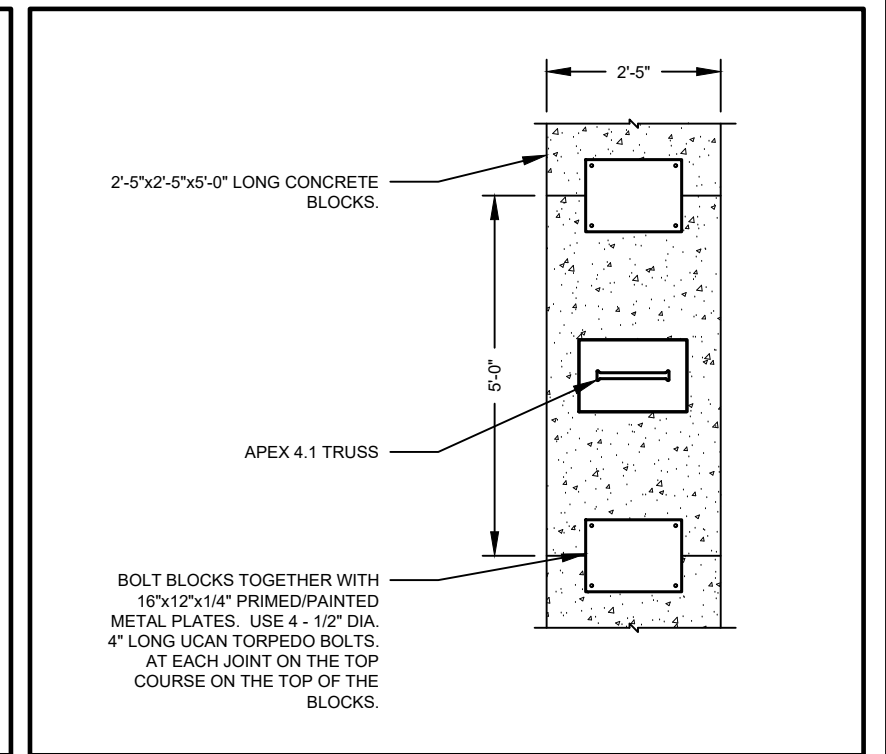
CUSTOMER ADDRESS:
 RCMP ACADEMY - DEPOT DIVISION
 5600 - 11 AVENUE
 REGINA, SASKATCHEWAN
 PROJECT:
100' x 220' CONCRETE BLOCK FOUNDATION

DRAWING TITLE:
 FOUNDATION DETAILS
 PROJECT NO.: **18353** SCALE: **1/8" = 1'-0"** SHEET: **S-4**



DETAIL 1: FOUNDATION AND WALL SECTION

SCALE: 3/8" = 1'-0"

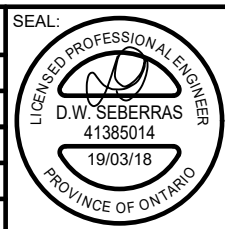


DETAIL 2: TRUSS AND STEEL PLATE LOCATION

SCALE: 3/8" = 1'-0"

LEGAL:
THIS DRAWING IS PROPERTY OF SEBERRAS PROFESSIONAL SERVICES INC. AND REPRODUCTION IN WHOLE OR IN PART WITHOUT THE EXPRESSED WRITTEN CONSENT OF SEBERRAS PROFESSIONAL SERVICES INC. IS PROHIBITED.
ANY DISCREPANCY OR CONCERNS WITH RESPECT TO THIS DRAWING IS TO BE REPORTED TO THE ENGINEER IMMEDIATELY.
DRAWING NOT TO SCALE UNLESS NOTED OTHERWISE.

2.	ISSUED FOR BUILDING PERMIT	19/03/18
1.	ISSUED FOR GENERAL REVIEW	16/03/18



CHECKED BY:
D.S.
FIRM BCIN:
30361
DRAWN BY:
B.B.

ENGINEERING BY:
SEBERRAS PROFESSIONAL SERVICES LTD.
CELL: (905) 536-7144
FAX: (519) 448-4801
EMAIL: dseberras@hotmail.com

CUSTOMER ADDRESS:
RCMP ACADEMY - DEPOT DIVISION
5600 - 11 AVENUE
REGINA, SASKATCHEWAN
PROJECT:
100' x 220' CONCRETE BLOCK FOUNDATION

DRAWING TITLE:
FOUNDATION DETAILS
PROJECT NO.: 18353
SCALE: 3/8" = 1'-0"
SHEET: S-5