

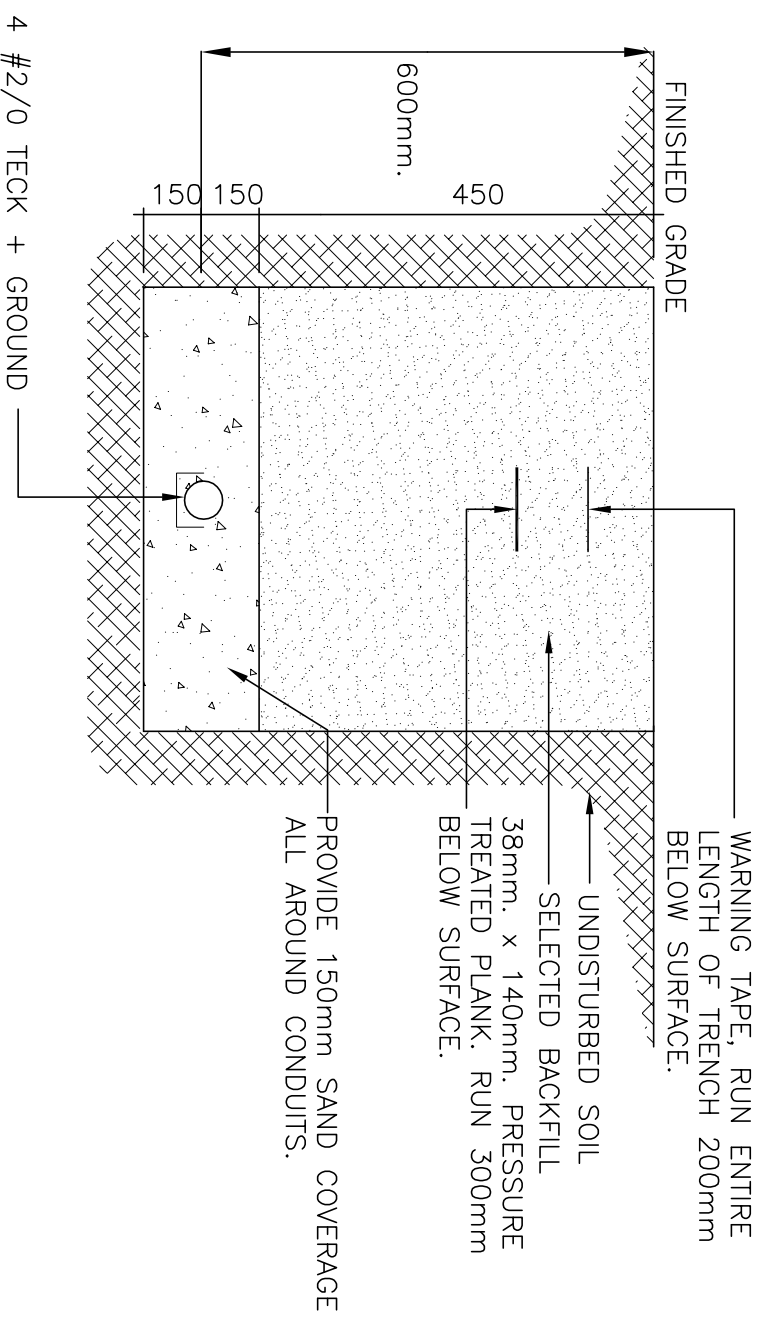
ELECTRICAL ADDENDUM #1
Terra Nova National Park
New Kitchen Shelter, Newman Sound
Issued May 28, 2018

The following shall be added to the Electrical plans and specification to form the complete tender documents for the above noted project:

Reference Electrical Drawing E2 – Floor Plans – Electrical Layouts, Panel Schedules and Details

1. Reference partial electrical distribution system - single line diagram and trench detail. See sketch ESK-1 for revised partial electrical distribution system - single line diagram and trench detail.
2. Reference panel schedule for K1. Service entrance rated main breaker for Panel K1 shall be rated 125 Amps, 3 pole, c/w mounting hardware, IC rating to match. Coordinate on site. Delete reference to 100 Amp 3 pole main breaker.

-END OF ADDENDUM-

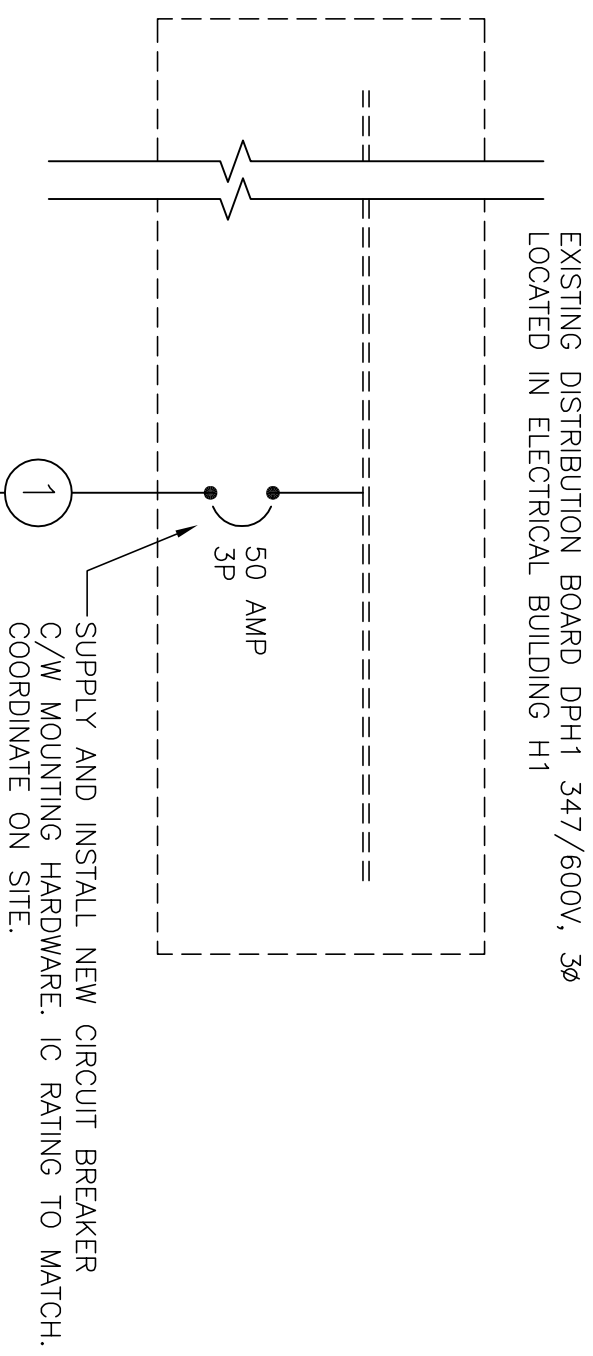


TRENCH DETAIL – KITCHEN BUILDING

SCALE : N.T.S.

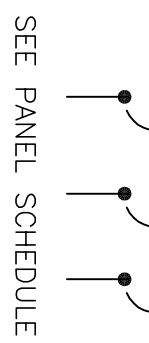
BROKEN LINE INDICATES EXISTING.
SOLID LINE INDICATES NEW.

SYMBOL	WIRE AND CONDUIT SIZE
①	3 #6 RW90 + 1 #8 TW GROUND IN 27mm EMT CONDUIT
②	4 #2/0 TECK + GROUND
③	1 #6 TW GROUND IN 21mm EMT CONDUIT. CONNECT TO EXISTING GROUNDING BUS. COORDINATE ON SITE.



PARTIAL ELECTRICAL DISTRIBUTION SYSTEM SINGLE LINE DIAGRAM

SCALE : N.T.S.



Mechanical & Electrical Consultant:

Project:

Drawing title:



NEW KITCHEN SHELTER
NEWMAN SOUND

TERRA NOVA NATIONAL PARK GLOVERTOWN NL

REVISED TRENCH DETAIL
AND PARTIAL ELECTRICAL
DISTRIBUTION SYSTEM

Date:
MAY 28, 2018

NO.	REVISION DESCRIPTION	DATE	DESIGNED BY:	DRAWN BY:	APPROVED BY:	SCALE:
1	ISSUED WITH ADDENDUM NO. 1	28 05/18	K.N.	D.R.	K.N.	AS NOTED
	REVISION DESCRIPTION					

project no.: PCA NO. 457
dwg no.: ESK-1