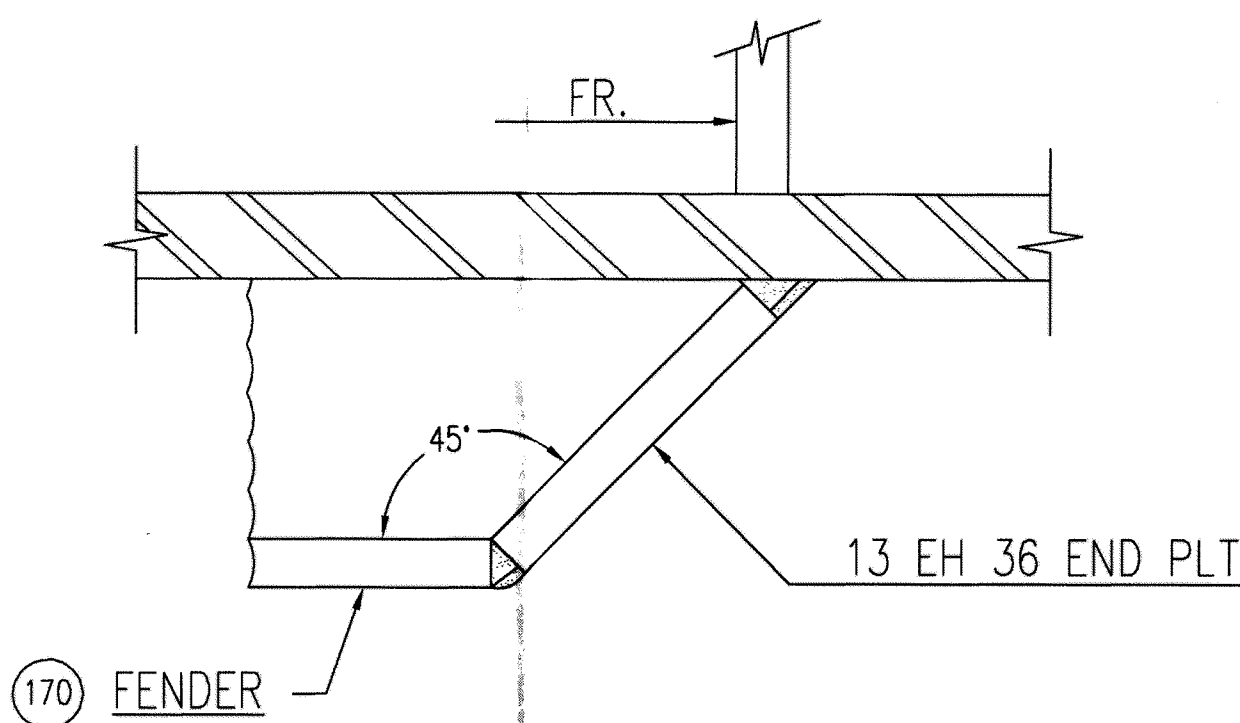
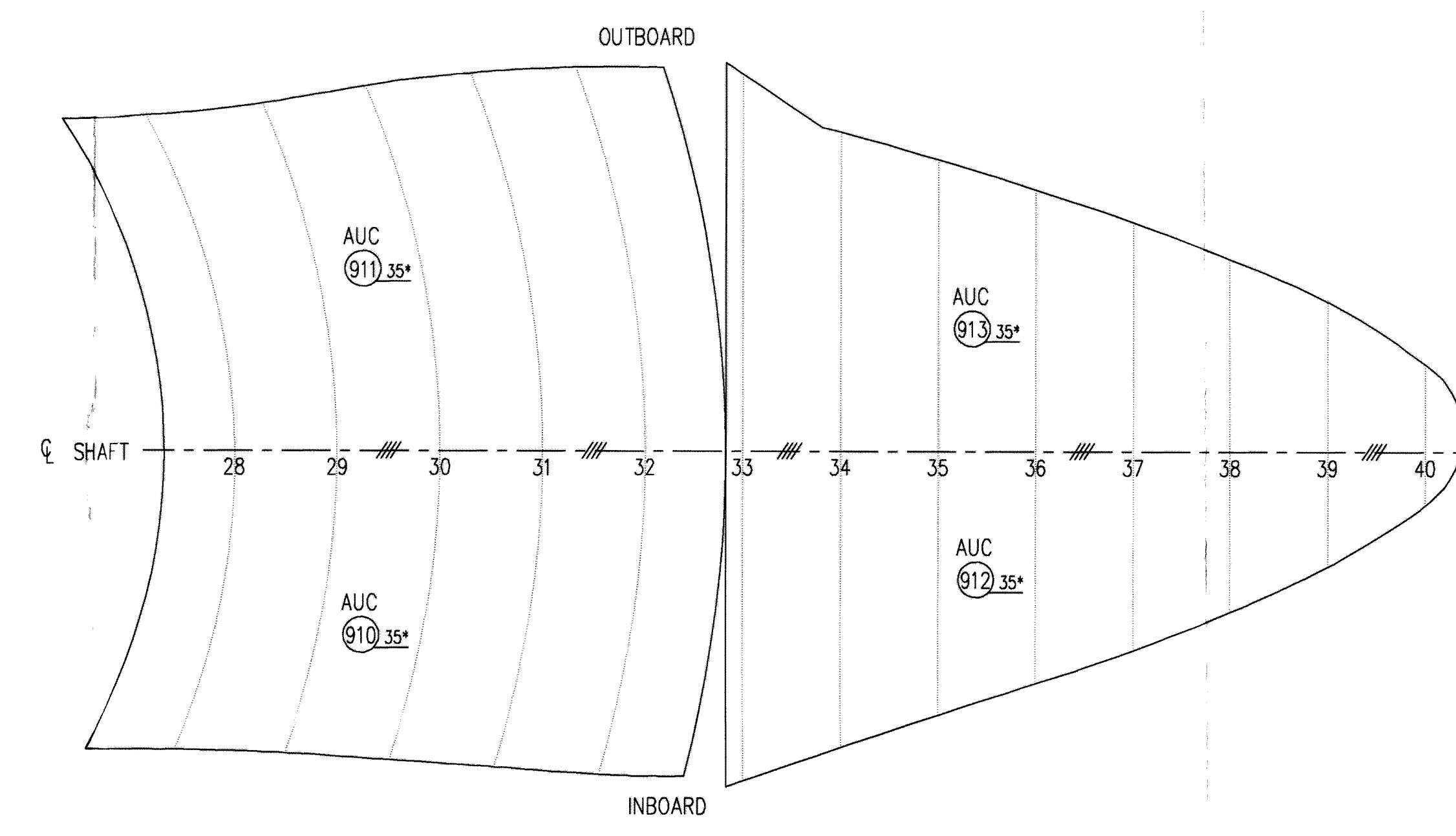


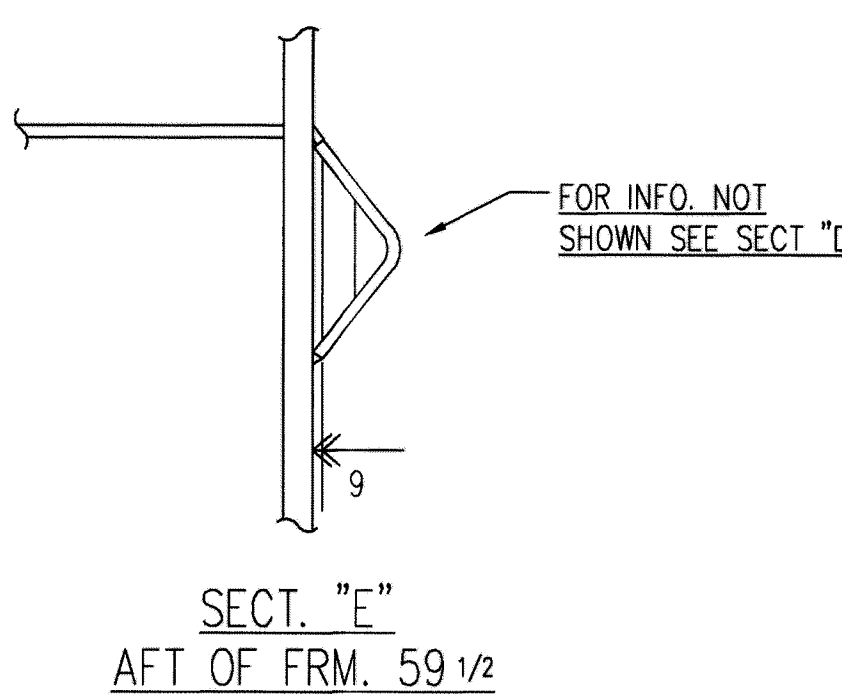
DETAIL OF FENDER
CLOSING PIECE AT UNIT SHELL BUTTS
FENDER FITTED AFTER SHELL BUTT ACCEPTED (X-RAYED)



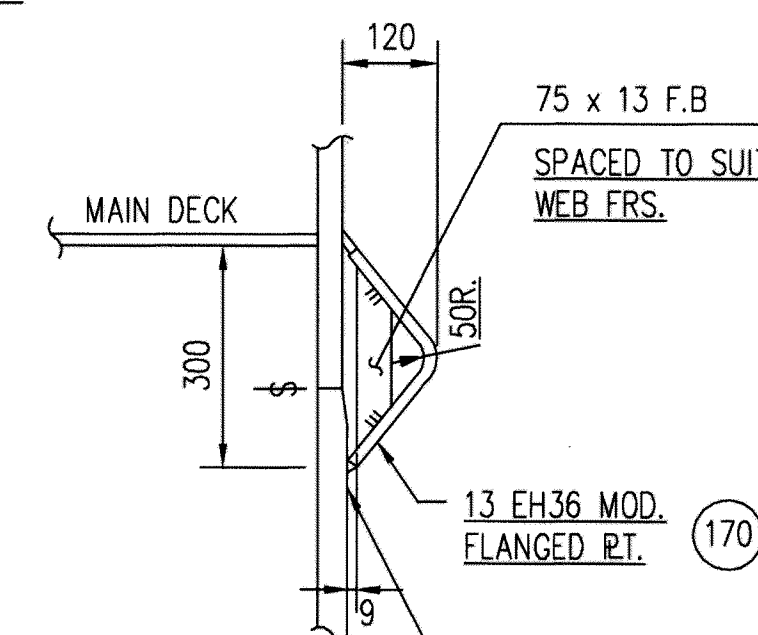
FENDER END PLATE



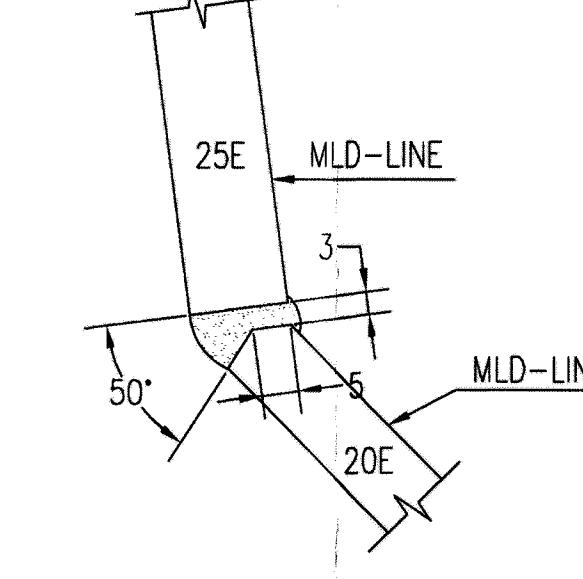
EXPANSION OF BOSS PLATING
1:25



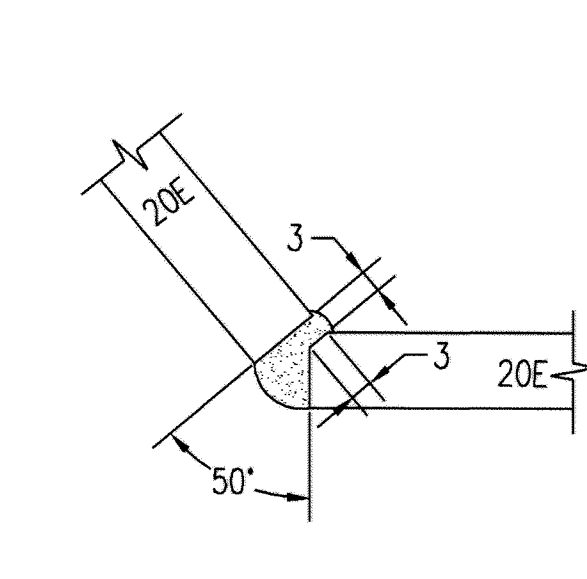
SECTION "E"
AFT OF FRM. 59 1/2



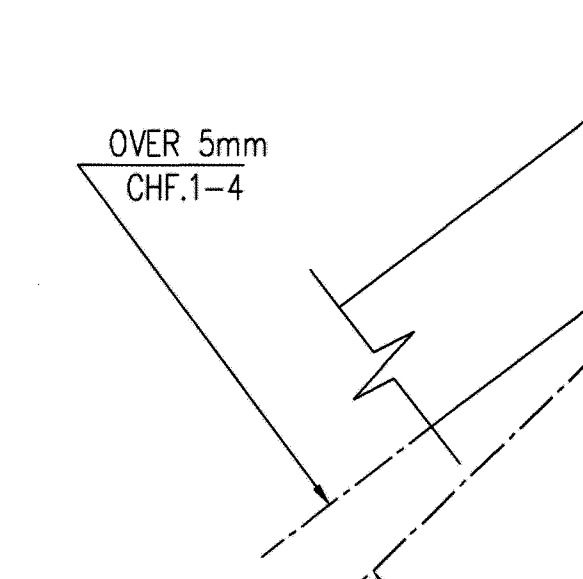
SECTION "D"
FWD OF FR. 59 1/2



DETAIL "A"
SCALE 1:2



DETAIL "B"
SCALE 1:2



DETAIL "C"
SCALE 1:2

THK	a
25mm	8mm
32mm	10mm
38mm	12mm
41mm	13mm

REF. ENG. DWG. # 71-01-06

MIN. SEA INLET AREA REQ'D = 0.8843m² TOTAL

USING 25.4mm Ø HOLES = 1311 HOLES

NUMBER OF HOLES SHOWN = 1333

AREA OF HOLES = 0.8751m²

PLATE AREA CONTAINING HOLES = 6.056m²

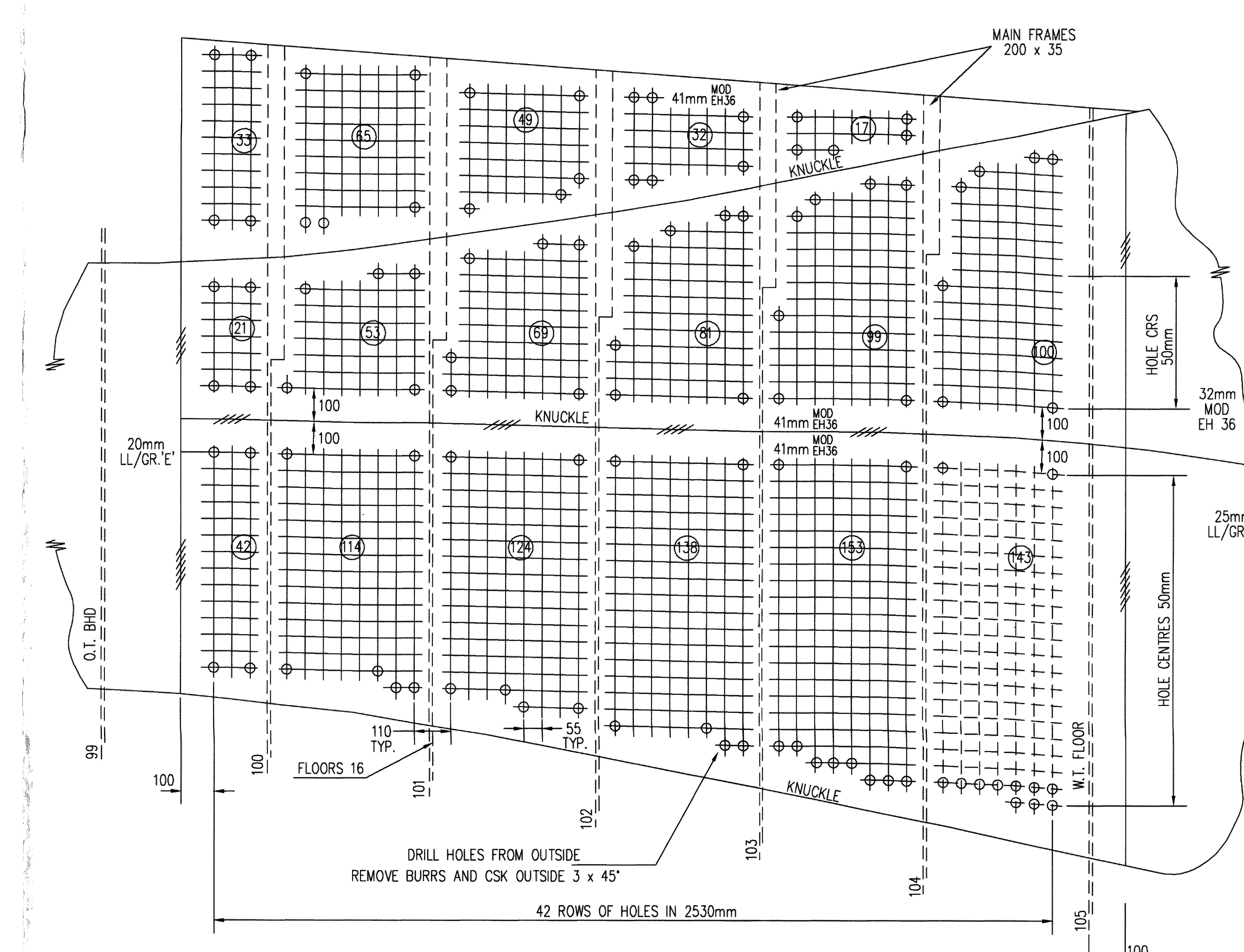
PLATE AREA REMOVED = 11%

DETAILS OF SEA INLET

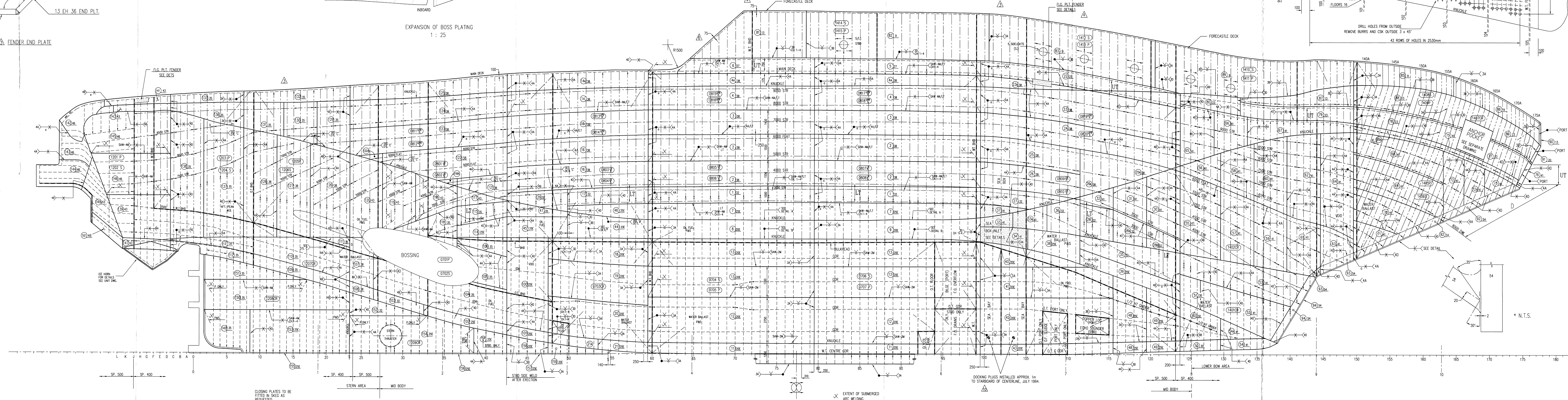
2 REQ'D - 1 AS DRAWN STBD

1 TO OPPOSITE HAND PORT

SCALE 1:10



DRILL HOLES FROM OUTSIDE
REMOVE BURRS AND CSK OUTSIDE 3 x 45°



-NOTE-

- * ALL WELD SYMBOLS & EDGE PREPARATIONS ARE SUBJECT TO REVIEW AT THE COMPLETION OF EACH UNIT. NO SHELL PLATES ARE TO BE CUT BEFORE CROSS CHECKING WITH FINAL UNIT CONSTRUCTION DRC.
- * THIS DRAWING HAS BEEN SCANNED FROM HAND DRAWN PAPER DRAWINGS AND THEREFORE MAY CONTAIN INHERENT INACCURACIES.

1	REDESIGNING PLATES THAT WERE INSTALLED IN JULY 1994, AND	18/06/99	C.J.S.
2	REDESIGNING PLATES THAT WERE INSTALLED IN JULY 1994, AND	18/06/99	C.J.S.
3	REDESIGNING PLATES THAT WERE INSTALLED IN JULY 1994, AND	18/06/99	C.J.S.
4	REDESIGNING PLATES THAT WERE INSTALLED IN JULY 1994, AND	18/06/99	C.J.S.
5	REDESIGNING PLATES THAT WERE INSTALLED IN JULY 1994, AND	18/06/99	C.J.S.
6	REDESIGNING PLATES THAT WERE INSTALLED IN JULY 1994, AND	18/06/99	C.J.S.
7	REDESIGNING PLATES THAT WERE INSTALLED IN JULY 1994, AND	18/06/99	C.J.S.
8	REDESIGNING PLATES THAT WERE INSTALLED IN JULY 1994, AND	18/06/99	C.J.S.
9	REDESIGNING PLATES THAT WERE INSTALLED IN JULY 1994, AND	18/06/99	C.J.S.
10	REDESIGNING PLATES THAT WERE INSTALLED IN JULY 1994, AND	18/06/99	C.J.S.
11	REDESIGNING PLATES THAT WERE INSTALLED IN JULY 1994, AND	18/06/99	C.J.S.
12	REDESIGNING PLATES THAT WERE INSTALLED IN JULY 1994, AND	18/06/99	C.J.S.
13	REDESIGNING PLATES THAT WERE INSTALLED IN JULY 1994, AND	18/06/99	C.J.S.
14	REDESIGNING PLATES THAT WERE INSTALLED IN JULY 1994, AND	18/06/99	C.J.S.
15	REDESIGNING PLATES THAT WERE INSTALLED IN JULY 1994, AND	18/06/99	C.J.S.
16	REDESIGNING PLATES THAT WERE INSTALLED IN JULY 1994, AND	18/06/99	C.J.S.
17	REDESIGNING PLATES THAT WERE INSTALLED IN JULY 1994, AND	18/06/99	C.J.S.
18	REDESIGNING PLATES THAT WERE INSTALLED IN JULY 1994, AND	18/06/99	C.J.S.
19	REDESIGNING PLATES THAT WERE INSTALLED IN JULY 1994, AND	18/06/99	C.J.S.
20	REDESIGNING PLATES THAT WERE INSTALLED IN JULY 1994, AND	18/06/99	C.J.S.
21	REDESIGNING PLATES THAT WERE INSTALLED IN JULY 1994, AND	18/06/99	C.J.S.
22	REDESIGNING PLATES THAT WERE INSTALLED IN JULY 1994, AND	18/06/99	C.J.S.
23	REDESIGNING PLATES THAT WERE INSTALLED IN JULY 1994, AND	18/06/99	C.J.S.
24	REDESIGNING PLATES THAT WERE INSTALLED IN JULY 1994, AND	18/06/99	C.J.S.
25	REDESIGNING PLATES THAT WERE INSTALLED IN JULY 1994, AND	18/06/99	C.J.S.
26	REDESIGNING PLATES THAT WERE INSTALLED IN JULY 1994, AND	18/06/99	C.J.S.
27	REDESIGNING PLATES THAT WERE INSTALLED IN JULY 1994, AND	18/06/99	C.J.S.
28	REDESIGNING PLATES THAT WERE INSTALLED IN JULY 1994, AND	18/06/99	C.J.S.
29	REDESIGNING PLATES THAT WERE INSTALLED IN JULY 1994, AND	18/06/99	C.J.S.
30	REDESIGNING PLATES THAT WERE INSTALLED IN JULY 1994, AND	18/06/99	C.J.S.
31	REDESIGNING PLATES THAT WERE INSTALLED IN JULY 1994, AND	18/06/99	C.J.S.
32	REDESIGNING PLATES THAT WERE INSTALLED IN JULY 1994, AND	18/06/99	C.J.S.
33	REDESIGNING PLATES THAT WERE INSTALLED IN JULY 1994, AND	18/06/99	C.J.S.

SHELL EXPANSION
 "AS FITTED"
 DRAWN BY: P.C.
 DATE: 18/06/99
 APPROVED BY: J.G.
 DATE: 18/06/99
 SCALE: 1:50
 REF. NO.
 SHEET 1/1

* THIS DRAWING HAS BEEN APPROVED BY:
 -LLOYDS ON 14/04/82
 -G&M ON 20/04/82