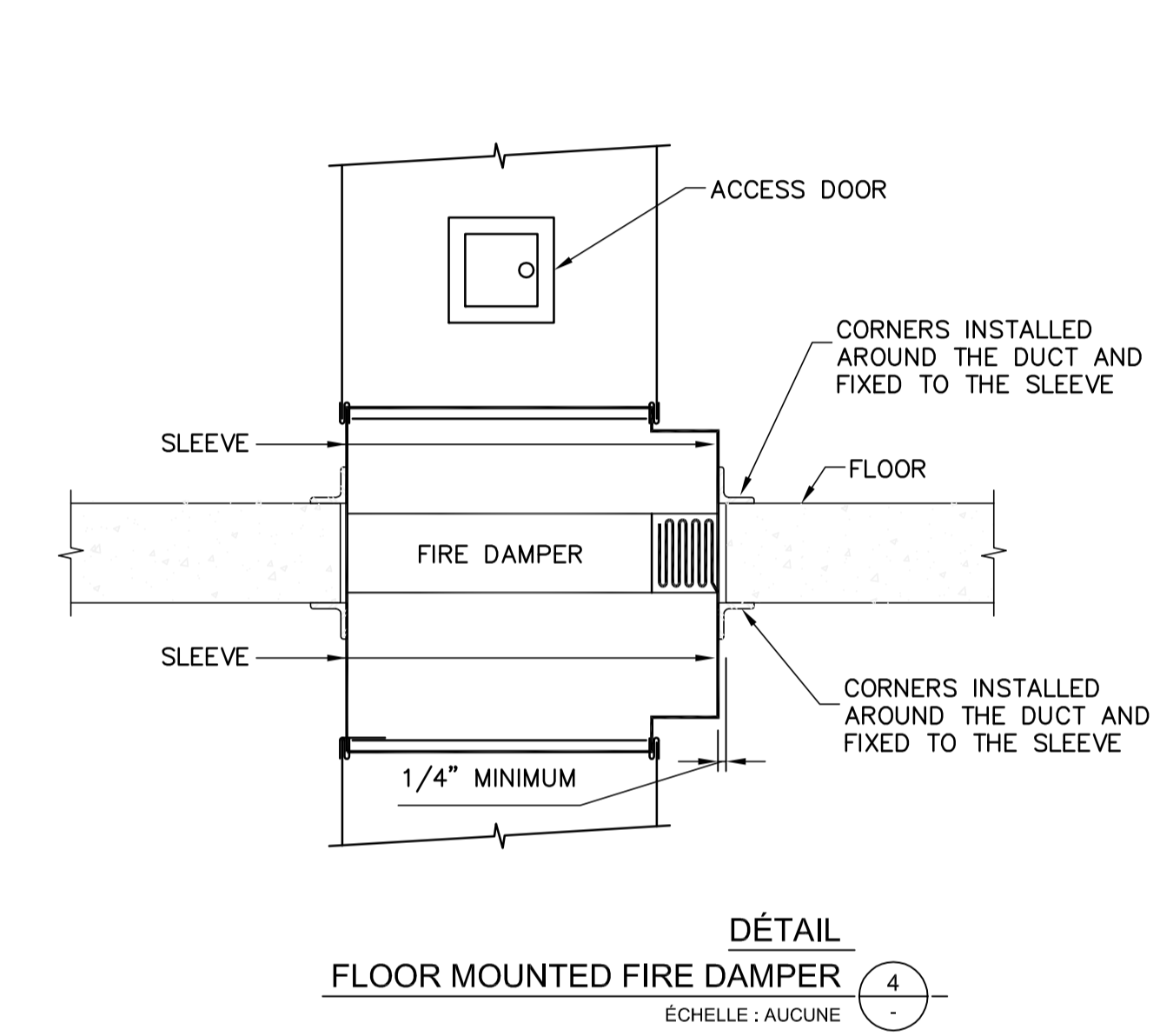
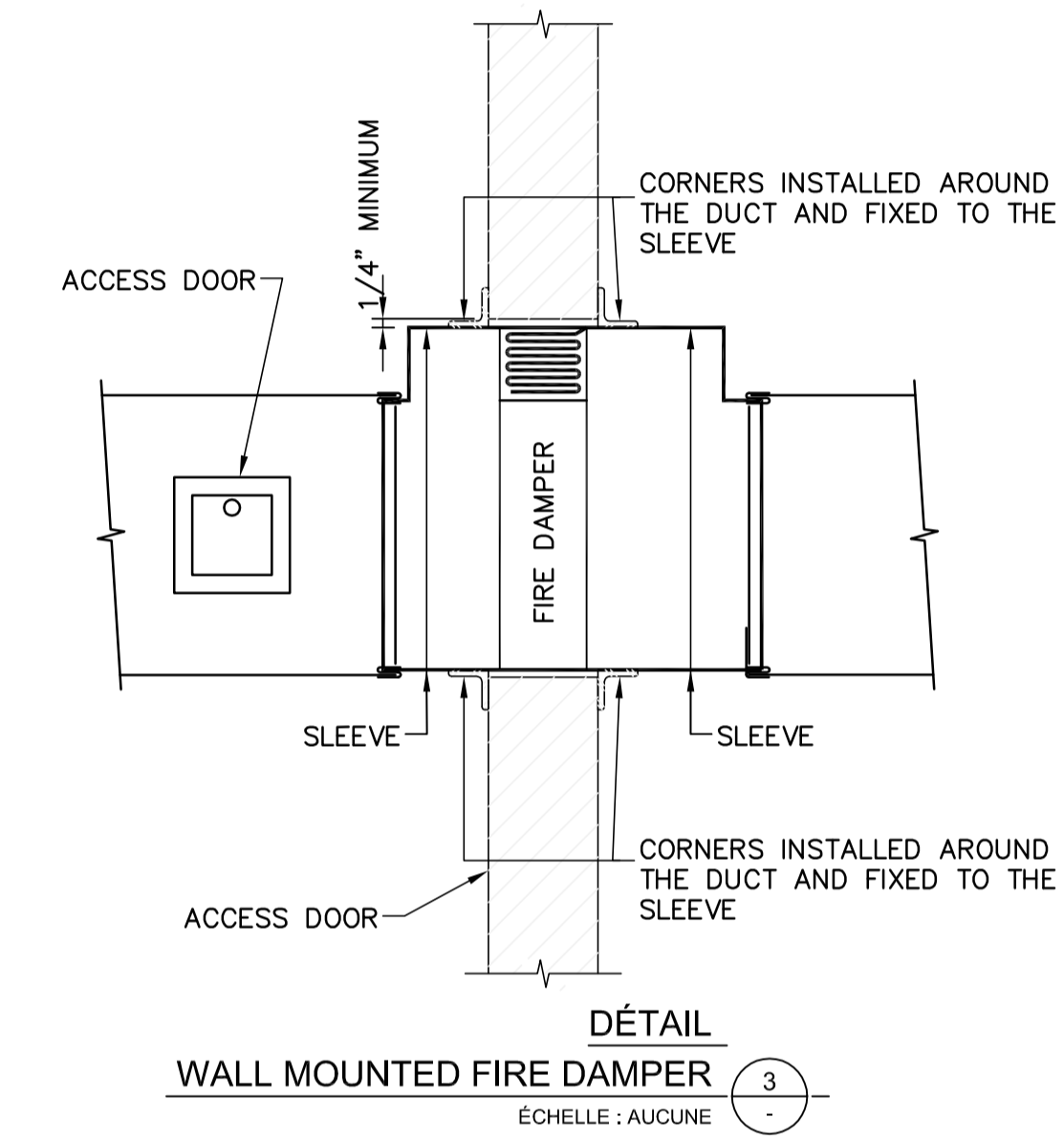
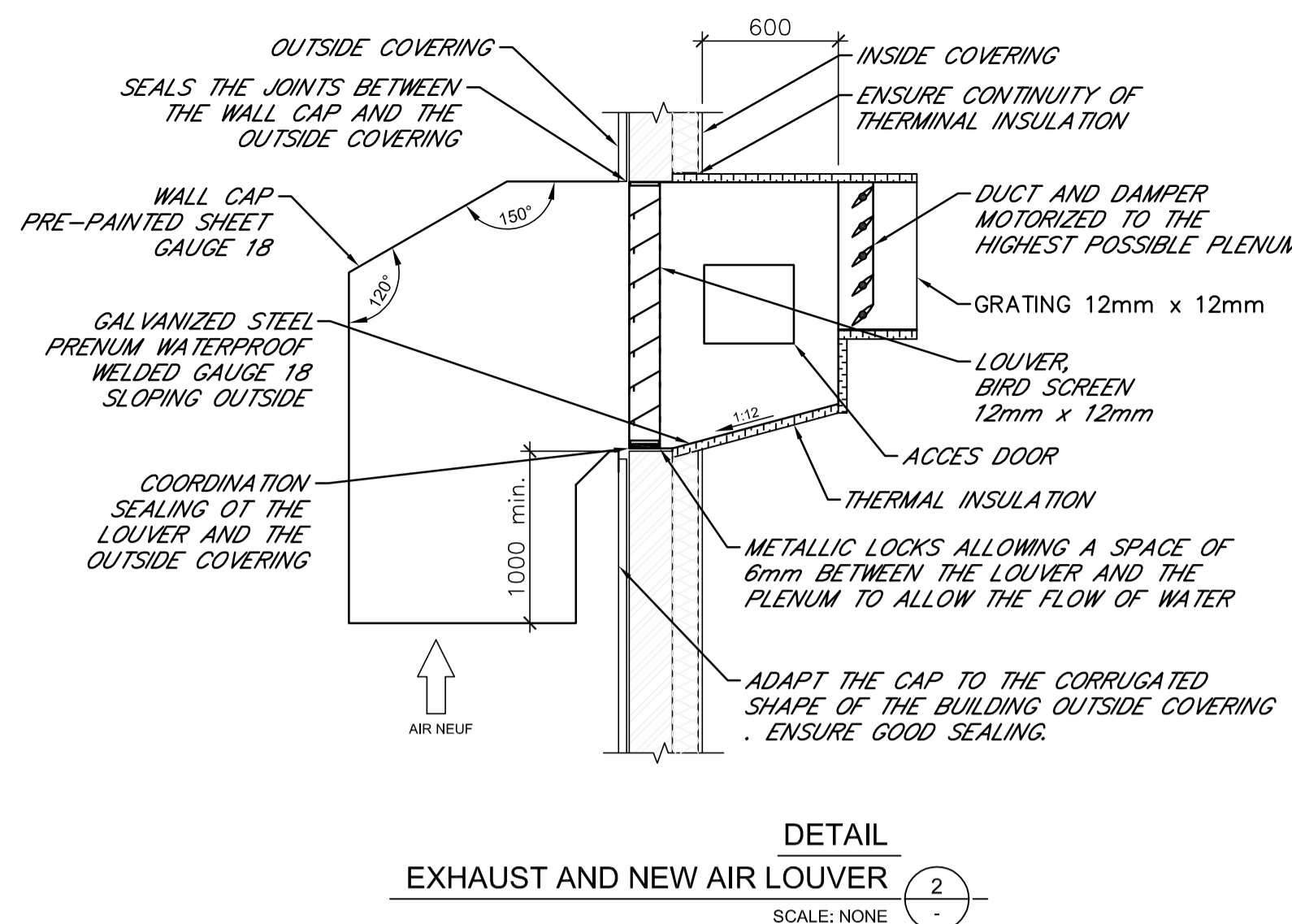
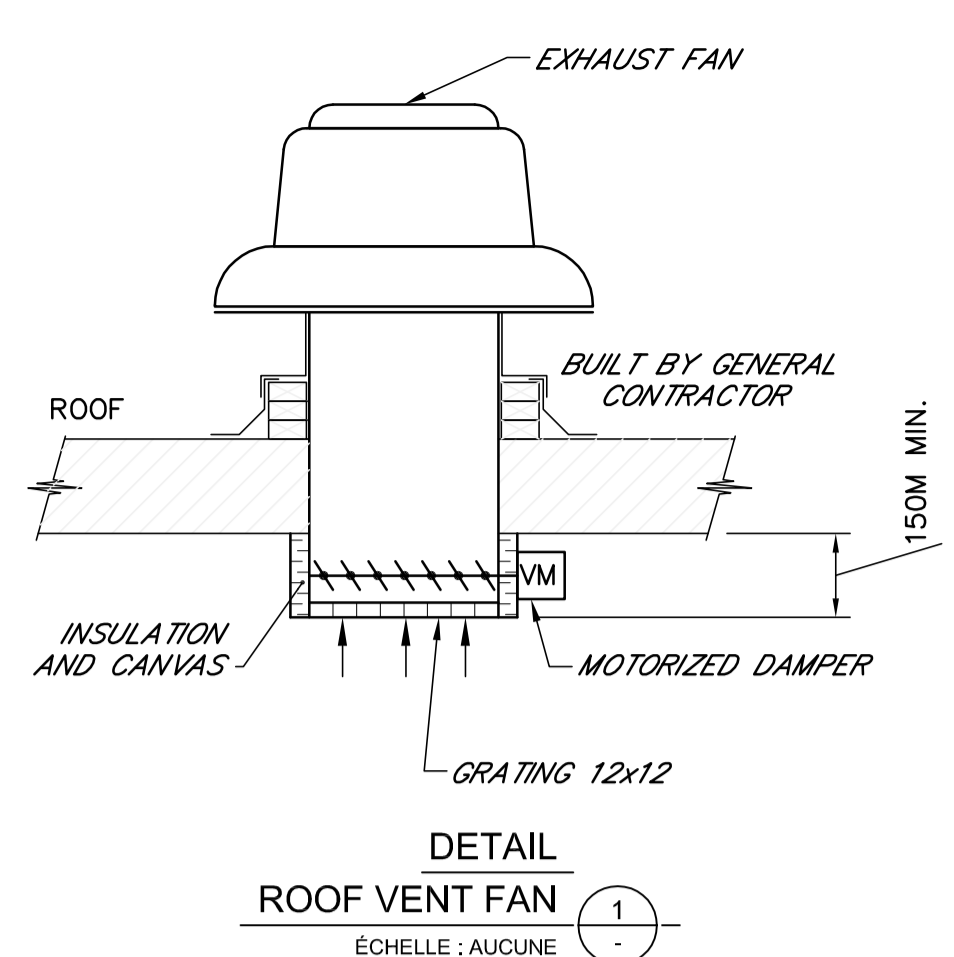


SPECIFICATIONS	
EQUIPEMENT	DESCRIPTION
DUCT HEATER CC1	OIL # 2 (MAZOUT) BURNER ON A FLOOR HEAT EXCHANGER WITH DRUM AND QUALITY 316 STAINLESS STEEL TUBES MAIN POWER SUPPLY (240V/1/60) CONNECTION TERMINAL ALL ELECTRICAL AND MECHANICAL COMPONENTS REQUIRED FOR UNIT OPERATION PRE-PURGE PERIOD ALL SAFETY CHECKS GALVANIZED 18 AWG EXTERNAL AND GALVANIZED PANELS 22 AWG INTERIOR PANELS 2 INCHES THICKNESS (51MM) HIGH TEMPERATURE INSULATION WITH 1.02LB / FT3 DENSITY LIFTING LEGS ON TWO SIDES OF THE EQUIPMENT FOR EASY HANDLING AND INSTALLATION ACCESS PANEL FOR EXCHANGER TUBES (FOR CLEANING) POWER AIR TEMPERATURE CONTROLLER BASIC CONTROL PANNEL
DUCT HEATER CC2	OIL # 2 (MAZOUT) BURNER ON A FLOOR HEAT EXCHANGER WITH DRUM AND QUALITY 316 STAINLESS STEEL TUBES MAIN POWER SUPPLY (240V/1/60) CONNECTION TERMINAL ALL ELECTRICAL AND MECHANICAL COMPONENTS REQUIRED FOR UNIT OPERATION PRE-PURGE PERIOD ALL SAFETY CHECKS GALVANIZED 18 AWG EXTERNAL AND GALVANIZED PANELS 22 AWG INTERIOR PANELS 2 INCHES THICKNESS (51MM) HIGH TEMPERATURE INSULATION WITH 1.02LB / FT3 DENSITY LIFTING LEGS ON TWO SIDES OF THE EQUIPMENT FOR EASY HANDLING AND INSTALLATION ACCESS PANEL FOR EXCHANGER TUBES (FOR CLEANING) POWER AIR TEMPERATURE CONTROLLER BASIC CONTROL PANNEL
WALL-MOUNTED FLAP CM1	IN ALUMINIUM SPRING SHAFT BIRD PARTS DIAMETER 150mm (6 ")
FILTER FIL1	30/30 TYPE: 50mm (2 ") THICKNESS OF 30% EFFICIENCY EFFECTIVENESS: MERV 8
SUPPLY GRID GA1	DOUBLE DEFLECTION DIMENSIONS TO PLANS COLOR AT THE CHOICE OF THE ARCHITECT
RETOUR GRID GR1	SINGLE DEFLECTION INTEGRATED BALANCING SHUTTER DIMENSIONS TO PLANS COLOR AT THE CHOICE OF THE ARCHITECT
RETOUR GRID GR2	STEEL FLOOR GRILLE 100x250mm (4 "x10") DIMENSION TO PLANS
KITCHEN HOOD HO1	FLOW 71 l / s (150 CFM) CONNECTION 120V/1/60 POWER 42.7 WATTS SONES 1.5 DIMENSION 600x495x190 3 SPEED CERTIFIED HVI 2100 STAINLESS STEEL C/A NECESSARY OF INSTALLATION COAL FILTER
LOUVER PA1	DIMENSION: 800x1000mm (32 "x40") BIRD SCREEN 12x12mm (1/2 "x1 / 2") IN ALUMINIUM POINT OF WATER PENETRATION @1047 FPM THONCKNESS OF 2mm, ANGLE 35°; FOR A 1200x1200mm (48"x48") LOUVER THE PERCENTAGE OF FREE SPACES IS 53.9%
SUPPLY FAN VA1	FLOW RATE: 2476 l / s @ 34.7Pa (5250 CFM @ 1.4 "H2O) MOTOR: 3HP CONNECTION: 240V / 1/60 C/A VIBRATION ISOLATORS - SUSPENSION, SPRING WITH SUSPENSION SUPPORTS SPEED VARIATOR, 1.5 SF NON-FUSED DISC SWITCH (NEMA 1)
SUPPLY FAN VA2	FLOW RATE: 2080 l / s @ 34.7Pa (4400 CFM @ 1.4 "H2O) MOTOR: 3HP CONNECTION: 240V / 1/60 C/A VIBRATION ISOLATORS - SUSPENSION, SPRING WITH SUSPENSION SUPPORTS SPEED VARIATOR, 1.5 SF NON-FUSED DISC SWITCH (NEMA 1)

ROOF EXHAUST FAN VE1	FLOW RATE: 103 l / s @ 124Pa (218 CFM @ 0.5 "H2O) MOTOR: 1 / 4HP CONNECTION: 240V / 1/60 C/A VIBRATION ISOLATORS - SUSPENSION, SPRING WITH SUSPENSION SUPPORTS SPEED VARIATOR, 1.5 SF NON-FUSED DISC SWITCH (NEMA 1)
ROOF EXHAUST FAN VE2	FLOW RATE: 113 l / s @ 124Pa (240 CFM @ 0.5 "H2O) MOTOR: 1 / 4HP CONNECTION: 240V / 1/60 C/A VIBRATION ISOLATORS - SUSPENSION, SPRING WITH SUSPENSION SUPPORTS SPEED VARIATOR, 1.5 SF NON-FUSED DISC SWITCH (NEMA 1)
WALL EXHAUST FAN VE3-1 A VE3-3	V3-1 FLOW RATES: 311 L/S @ 31PA (660 CFM @ 0.125 "H2O) V3-2 FLOW RATES: 235 L/S @ 31PA (720 CFM @ 0.125 "H2O) V3-3 FLOW RATES: 235 L/S @ 62 PA (500 CFM @ 0.25 "H2O) ENGINE: 1/2HP CONNECTION: 240V/1/60 C/A VIBRATION ISOLATORS SPEED VARIATOR NON-FUSED DISC SWITCH (NEMA 3R) MOTORIZED SHUTTER AND ACTUATOR TAMCO 9000 ECT
CILING EXHAUST FAN VE4	FLOW RATE: 47 l / s @ 50Pa (100 CFM @ 0.2 "H2O) MOTOR: 1 / 4HP CONNECTION: 120V / 1/60 C/A VIBRATION ISOLATORS SPEED VARIATOR NON-FUSED DISC SWITCH (NEMA 3R) MOTORIZED SHUTTER AND ACTUATOR TAMCO 9000 ECT
CO NO2	120V WITH TRANSFORMATOR INTEGRATED WITH REMOTE SENSOR E3SRMNO2



STANDARD INSULATION BOARD - VENTILATION				
FLUID	THICKNESS	TYPE OF INSULATION	LINING IF APPARENT (SEE NOTE)	NOTES
INSULATION ACOUSTIC	25mm (1")	- FLEXIBLE INSULATION MADE OF INORGANIC FIBERGLASS, - BLACK WOVEN FIBERGLASS COATING, WITH A COATING SEALER FOR BORDERS, DENSITY OF 32KG / M³ (2.0LB / FT³)		INSTALL 6 METERS DOWNSTREAM AND UPSTREAM OF ALL VENTILATION UNITS. ALL DUCTS SHALL BE ENLARGED SO AS TO RETAIN THE INTERIOR OF THE INSULATION TO THE DIMENSIONS SHOWN ON THE PLANS. COAT THE INSULATION TIPS WITH A SEALANT.
FRESH AIR ON LENGTH	50mm (2")			
FRESH AIR, MIXING CHAMBER	50mm (2")			
EVACUATION, 3m FROM OUTSIDE OR TO MINIMUM MOTORIZED SHUTTER	50mm (2")	- RIGID FIBERGLASS INSULATION WITH ECOSE TECHNOLOGY (AT LEAST 60% RECYCLED) WITH FSK COATING, DENSITY 36KG / M³ (2.25LB / FT³)	CANVAS, COTTON OF 220G / M² PLAIN WEAVE, COATED WITH HEAT-INSULATING GLUE AND FLAME RETARDANT, DILUTED ACCORDING TO STANDARD ASTM C921	INSTALL WITH MECHANICAL FASTENERS TO DUCTS SEAL THE VAPOR BARRIER WITH A 75 MM ALUMINIUM TAPE INSTALL CORNERS OF METAL (75X50 MM FOR INSULATION 50 MM AND 50X25 MM FOR INSULATION 25 MM)
RECTANGULAR DUCT LOCATED IN THE ATTIC	50mm (2")	- CERTIFIED GREENGUARD "CHILDREN AND SCHOOLS"		
AIR CONDITIONING, RELATED, RECTANGULAR	25mm (1")	- CERTIFIED: ASTM C612, ASTM C 1136 TYPE II		
ROOF UNIT, POWER SUPPLY OR RETURN 3m FROM AN EXTERNAL DISTRIBUTION	50mm (2")	- R VALUE INSTALLED: RSI = 0.75 (R-4.3) / 25 MM EP. - FLAME PROPAGATION INDEX <25 - SMOKE PROPAGATION INDEX <50		
AIR CONDITIONING, RECTANGULAR OR ROUND, NOT INSULATED ACOUSCALLY	25mm (1")	- FIBERGLASS MATTRESS INSULATION WITH TECHNOLOGY ECOSE (AT LEAST 60% RECYCLED) WITH FSK COATING, DENSITY 24KG / M³ (1.5LB / FT³)	CANVAS, COTTON OF 220G / M² PLAIN WEAVE, COATED WITH HEAT-INSULATING GLUE AND FLAME RETARDANT, DILUTED ACCORDING TO STANDARD ASTM C921	SEAL STEAM WITH 75 mm ALUMINIUM TAPE
DRYING EVACUATION, 3m FROM THE OUTSIDE WALL	50mm (2")	- CERTIFIED GREENGUARD "CHILDREN AND SCHOOLS"		
ROUND DUCT IN THE ATTIC	50mm (2")	- R VALUE INSTALLED: RSI = 0.56 (R-3.2) / 25MM EP. - FLAME PROPAGATION INDEX <25 - SMOKE PROPAGATION INDEX <50		
ROUND EVACUATION	50mm (2")			
RECTANGULAR DUCT LOCATED OUTSIDE THE BUILDING	2x50mm (2"x2")	- FIBERGLASS MATTRESS INSULATION WITH TECHNOLOGY ECOSE (AT LEAST 60% RECYCLED) WITH FSK COATING, DENSITY 24KG / M³ (1.5LB / FT³)	PROVIDE AND INSTALL A 0.5 MM THICK ALUMINIUM LINER WITH A CORRUGATED SURFACE AND 0.5 MM THICK STAINLESS STEEL FASTENERS WITH A WIDTH OF 20 MM AND INSTALLED AT INTERVALS OF 300 M	INSTALL THE TWO ROWS OF STAGGERED INSULATION. (OFFSET JOINTS)
ROUND DUCT LOCATED OUTSIDE THE BUILDING	2x50mm (2"x2")	- CERTIFIED GREENGUARD "CHILDREN AND SCHOOLS"		
		- R VALUE INSTALLED: RSI = 0.56 (R-3.2) / 25MM EP. - FLAME PROPAGATION INDEX <25 - SMOKE PROPAGATION INDEX <50		

Client:

Transports Canada / Transport Canada
 Travaux publics et Services Gouvernementaux Canada / Public Works and Government Services Canada
 USC - MPO/TC / CSU - DFO/TC

Plan c/c:

Professionnels: ARCHITECTES

Guilmette Larue
 184, boul. Saint-Joseph Est
 Montréal (Québec) H2T 1H5
 Téléphone/phone (514) 286-6663
 Télécopieur/fax (514) 286-1017

POUR SOUMISSION
 NE PAS UTILISER POUR LA CONSTRUCTION
 FOR TENDER
 DO NOT USE FOR CONSTRUCTION

SNC-LAVALIN 2018-05-28

REV.	DATE	EMISSIIONS	PAR	VER.	APP.	
1	2018-05-28	EMIS POUR SOUMISSION		T.Lab.	M.Lor.	M.Lor.
0	2017-03-10	EMIS POUR SOUMISSION		D.Hou.	M.Lor.	M.Lor.

Consortium Avaata / Stavibel

Projet:

Aéroport Kuujuaq Airport
 Réfection de l'édifice Polyvalent
 Multipurpose building restoration

Titre:

MÉCANIQUE - VENTILATION
 MECHANICAL - VENTILATION

SPÉCIFICATIONS ET DÉTAILS
 SPECIFICATIONS AND DETAILS

Dessiné par: Dany Houle, tech.	Date ong.: 2016-11-30
Conçu par: Martin Lord, ing.	Chargé de projet: Gilles Marcotte, ing.
Véifié par: Martin Lord, ing.	Projet n°: R.079464.001
Approuvé par: Martin Lord, ing.	Référence: 635404-0000
Echelle: Telle qu'indiquée	Dessin n°: Q121Q612M022
	Rév. n°: 1