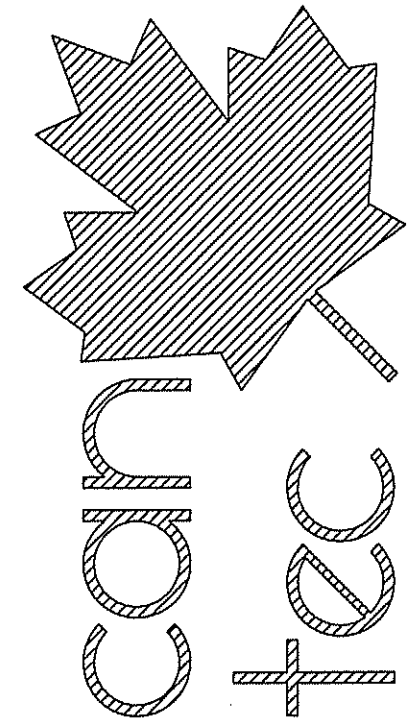


KUGAARUK V120

INTERIOR / EXTERIOR RENOVATIONS

CONSTRUCTION

THIS DRAWING MUST NOT BE SCALED.
 THE GENERAL CONTRACTOR SHALL VERIFY ALL DIMENSIONS, DATUMS AND LEVELS PRIOR TO COMMENCEMENT OF WORK AND IS HELD RESPONSIBLE FOR REPORTING ANY DISCREPANCY OR OMISSION TO CAN-TEC SERVICES LTD. IMMEDIATELY.
 THIS DRAWING IS THE EXCLUSIVE PROPERTY OF CAN-TEC SERVICES LTD. AND CAN BE REPRODUCED ONLY WITH THE PERMISSION OF CAN-TEC SERVICES LTD. IN WHICH CASE THE REPRODUCTION MUST BEAR THEIR NAME AS THE ENGINEERING/DRAFTING FIRM.



ENGINEERING AND DRAFTING
 1848 MAIN STREET, WINNIPEG, MANITOBA
 Tel: (204) 943-7222 Fax: (204) 947-5717
<http://www.cantecservices.ca/>

SEALED BY:

PROJECT TITLE
INTERIOR AND EXTERIOR RENOVATIONS V120

SHEET TITLE
TITLE PAGE

SCALE
 15 10 19 AS NOTED

LOCATION
 KUGAARUK, NUNAVUT

CONSTRUCTION

A0.0

REVISION #: 01
 JOB NO.
17-058-01-30

CHECKED BY
 RS

DRAWN BY
 RQS

DRAWING LIST


DRAWING LIST

- A0.0 TITLE PAGE
- A1.0 DEMOLITION PLAN
- A2.0 MAIN FLOOR PLAN
- A3.0 ELEVATIONS
- A4.0 WINDOW SECTIONS AND DETAILS
- A4.1 DETAILS
- A4.2 DETAILS
- A4.3 DETAILS
- A8.0 DOORS & WINDOWS SCHEDULE


- M1.0 MECHANICAL
- E1.0 ELECTRICAL

CONSULTANT LIST

PRIME CONSULTANT:



MECHANICAL ENGINEERING:



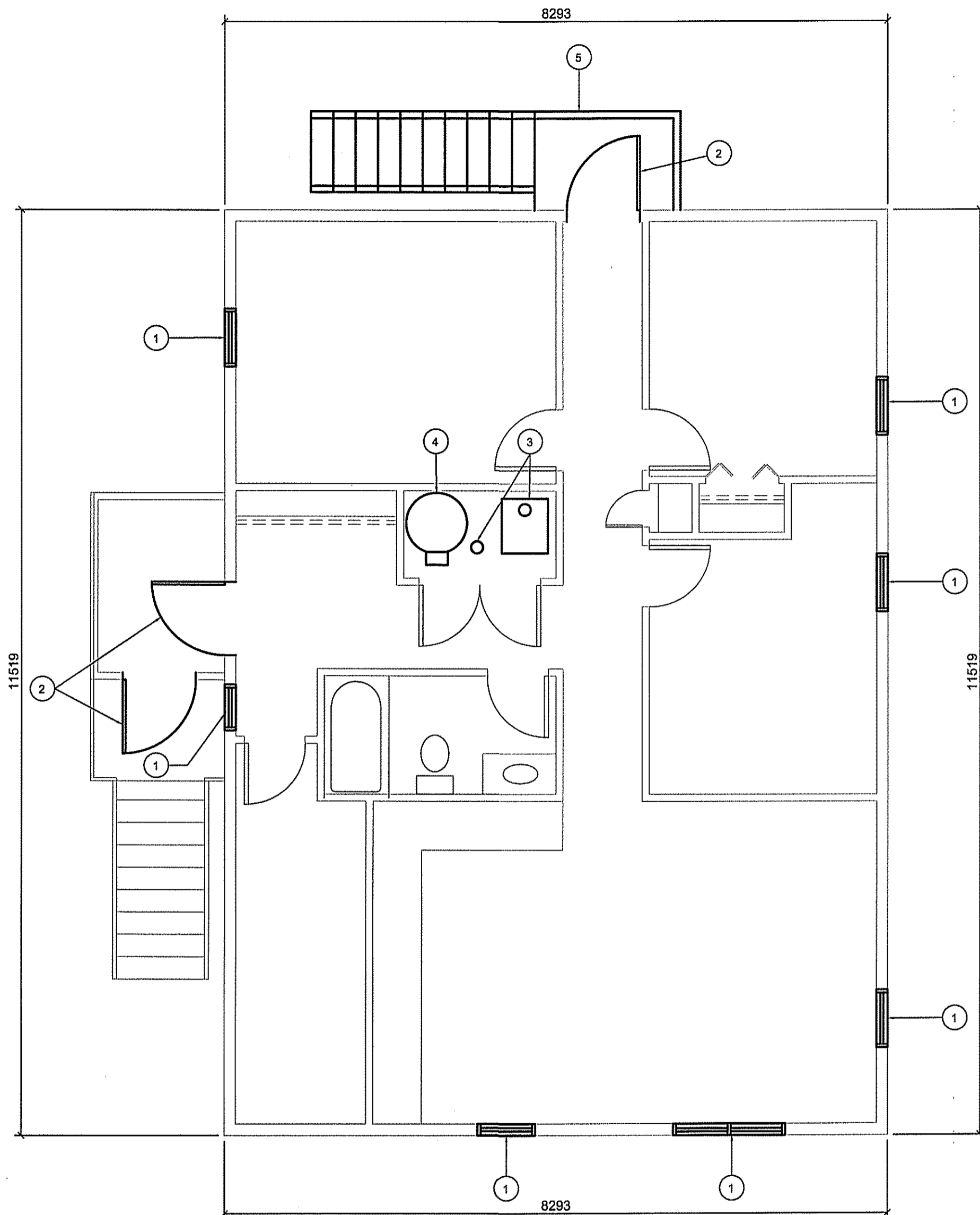
DRAWING SYMBOLS

	NUMBERED NOTE		DETAIL SECTION
	WINDOW NUMBER		DETAIL NUMBER
	WALL / ROOF IDENTIFIER		SHEET SECTION LOCATED
	DOOR NUMBER		ELEVATION IDENTIFIER
			DETAIL NUMBER
			SHEET ELEVATION LOCATED
			DETAIL MARKER (SEE SPECIFICATION BOOK)

ABBREVIATION LIST

ACOUSTIC	ACST	DRYWALL	DW	LAVATORY	LAV	ROOM	RM
ADHESIVE	ADH	EACH	EA	LAY-IN ACOUSTIC TILE	LAT	ROUGH OPENING	RO
ADJUSTABLE	ADJ	EACH WAY	EW	LEFT HAND	LH	RUBBER	RB
AGGREGATE	AGGR	EAST	E	LEFT HAND REVERSE	LHR	RVT	RESILIENT SHEET FLOORING
AIR VAPOUR BARRIER	AVB	ELECTRICAL	ELEC	LENGTH	LG	SCHEDULE	SCHED
ALTERNATE	ALT	ELEVATION	EL	LIGHT	LT	SCREW	SCR
ALUMINUM	ALUM	ELEVATOR	ELEV	LOUVRE	LVR	SECTION	SECT
APARTMENT	APT	EPOXY	EP	MANUFACTURE	MFG	SELF ADHESIVE	SA
APPROXIMATE	APPROX	EQUAL	EQ	MARK	MK	SHEATHING	SHTG
ARCHITECTURE	ARCH	EQUALLY SPACED	EQ SP	MASONRY OPENING	MO	SHEET	SHT
BEAM	BM	EQUIPMENT	EQUIP	MATERIAL	MAT	SHEET VINYL	SV
BENCH MARK	BM	EXISTING	EXIST	MECHANICAL	MECH	SIMILAR	SIM
BETWEEN	BTWN	EXPANSION	EXP	MINIMUM	MIN	SOLID CORE	SC
BLOCK	BLK	EXTERIOR	EXT	MISCELLANEOUS	MISC	SOUTH	S
BOARD	BD	EXTRUDE	EXTR	NEAR FACE	NF	SPECIFICATION	SPEC
BOTH SIDES	BS	FACE TO FACE	F/F	NEAR SIDE	NS	SPRUCE, PINE OR FIR	S/P/F
BOTH WAYS	BW	FAR SIDE	FS	NORTH	N	STAIN	ST
BOTTOM	BOT	FIBREBOARD	FBRBD	NOT APPLICABLE	N/A	STAINLESS STEEL	SS
BUILDING	BLDG	FINISH	FIN	NOT IN CONTRACT	NIC	STANDARD	STD
CARPET	CPT	FLOOR	FL	NOT TO SCALE	NTS	STEEL	STL
CAST IRON	CI	FLOOR DRAIN	FD	NUMBER	NO	STRUCTURAL	STRUCT
CEILING	CLG	FLOORING	FLG	ON CENTRE	O/C	SQUARE FEET	SF
CEMENT BOARD	CBD	FLUORESCENT	FLR	OUT TO OUT	O/O	TEMPORARY	TEMP
CENTRE	CTR	FOOTING	FTG	OUTSIDE DIAMETER	OD	THROUGH	THRU
CENTRE TO CENTRE	C/C	FOUNDATION	FDN	OUTSIDE FACE	OF	TO MATCH EXISTING	TME
CERAMIC TILE	CT	FULL SIZE	FS	OVER-HEAD	OH	TONGUE AND GROOVE	T&G
CIRCLE	CIRC	GALVANIZED	GALV	PAINT	PT	TOP AND BOTTOM	T&B
CLEAR	CLR	GALVANIZED IRON	GI	PAINTED	PTD	TOP OF	T/O
COLUMN	COL	GAUGE	GA	PARTITION	PTN	TYPICAL	TYP
COMPLETE WITH	C/W	GLASS	GL	PLYWOOD	PLYWD	UNDER SIDE	U/S
CONCRETE	CONC	HARDWARE	HDW	PRECAST	PC	UNDERCUT	UCUT
CONCRETE BLOCK	CBLK	HEIGHT	HGT	PRECAST CONCRETE	PC CONC	URINAL	UR
CONSTRUCTION	CONST	HEXAGON	HEX	PREFABRICATION	PREFAB	VAPOUR BARRIER	VB
CONTINUOUS	CONT	HOLLOW CORE	HC	PREFINISHED	PREFIN	VERTICAL	VERT
CONTROL JOINT	CJ	HOLLOW METAL	HM	PRESSED STEEL	PS	VINYL ASBESTOS TILE	VAT
COUNTERSINK	CSK	HORIZONTAL	HORIZ	QUANTITY	QTY	VINYL COVE BASE	VCB
COVERED SHEET VINYL	CSV	INCLUSIVE	INCL	QUARRY TILE	QT	VINYL TILE	VT
DETAIL	DTL	INSIDE DIAMETER	ID	RADIUS	R	VINYL WALL COVERING	VWC
DEMOLISH	DEMO	INSIDE FACE	IF	RAINWATER LEADER	RWL	WATER CLOSET	WC
DIAGONAL	DIAG	INSULATE	INSUL	REFERENCE	REF		

01	ISSUED FOR CONSTRUCTION	18 03 22	RS
REV. #	REVISION	DATE (YY MM DD)	REV. BY



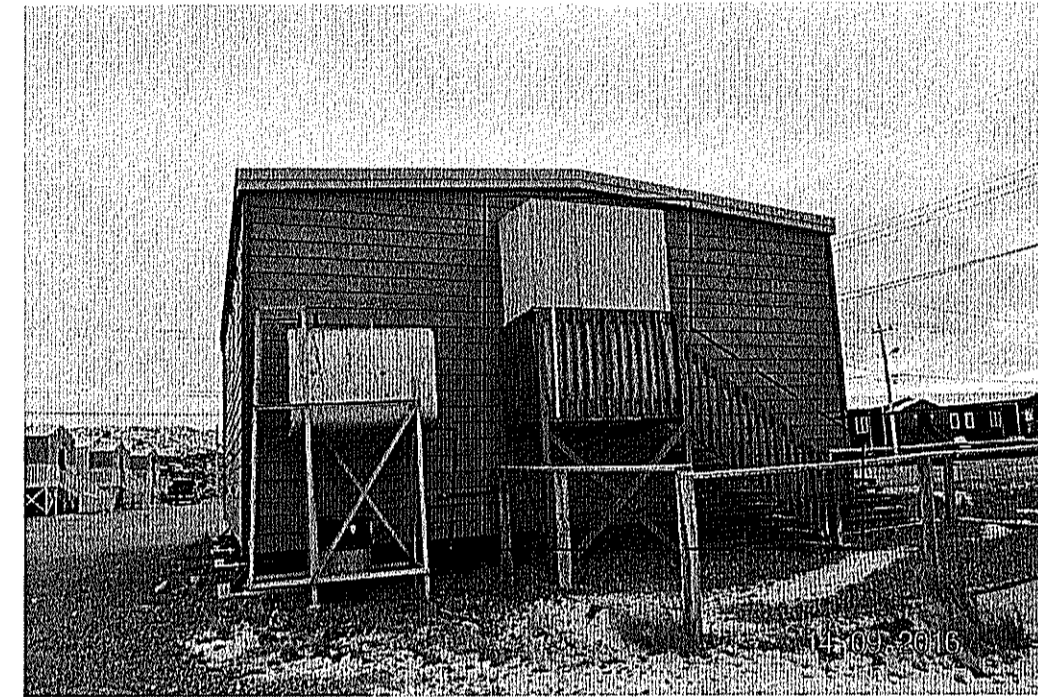
1 DEMOLITION PLAN
A1.0 SCALE: 1:50

DRAWING NOTES #

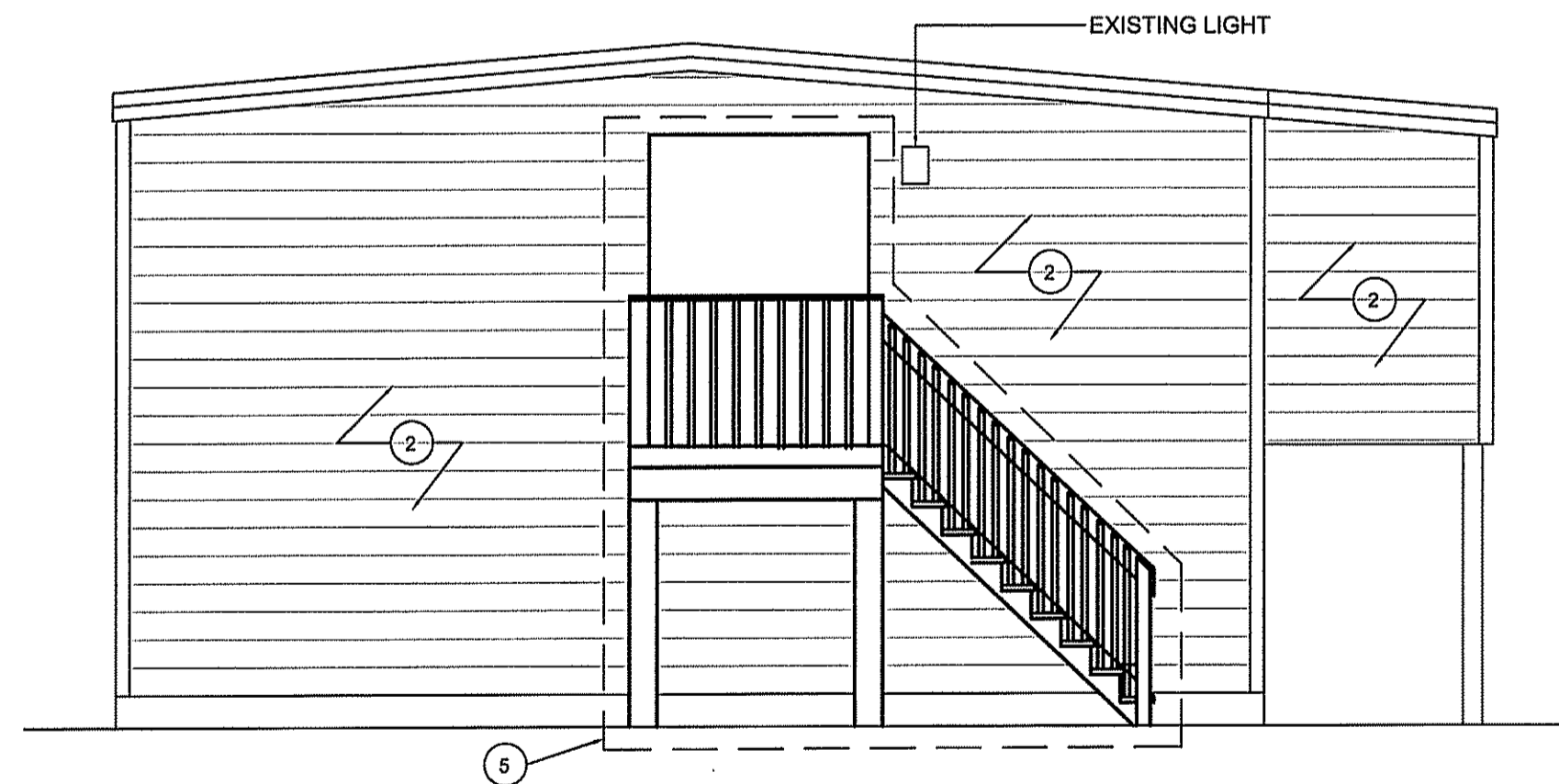
1. REMOVE WINDOW
2. REMOVE EXTERIOR DOOR
3. REMOVE FURNACE AND CHIMNEY
4. EXISTING HOT WATER TANK TO REMAIN
5. REMOVE EXISTING STAIRS, AND ENTRY VESTIBULE (SEE DETAIL THIS SHEET)

DEMOLITION NOTES

1. ALL DEMOLISHED MATERIALS TO BE REMOVED FROM SITE AND DISPOSED OF AS PER LOCAL CODES
2. REMOVE ALL WINDOW AND EXTERIOR DOOR CASINGS.

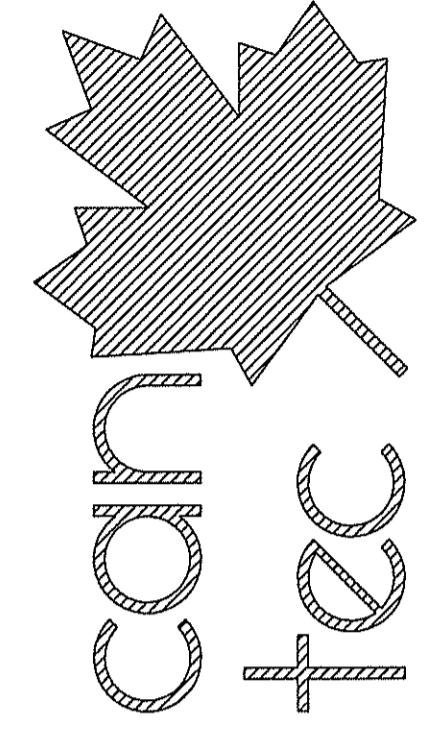


2 REAR VESTIBULE AND STAIRS
A1.0 SCALE: NTS



3 REAR ELEVATION
A1.0 SCALE: NTS

THIS DRAWING MUST NOT BE SCALED.
THE GENERAL CONTRACTOR SHALL VERIFY ALL DIMENSIONS, DATUMS AND LEVELS PRIOR TO COMMENCEMENT OF WORK AND IS HELD RESPONSIBLE FOR REPORTING ANY DISCREPANCY OR OMISSION TO CAN-TEC SERVICES LTD. IMMEDIATELY.
THIS DRAWING IS THE EXCLUSIVE PROPERTY OF CAN-TEC SERVICES LTD. AND CAN BE REPRODUCED ONLY WITH THE PERMISSION OF CAN-TEC SERVICES LTD. IN WHICH CASE THE REPRODUCTION MUST BEAR THEIR NAME AS THE ENGINEERING/DRAFTING FIRM.



SEALD BY:
1948 MAIN STREET, WINNIPEG, MANITOBA Tel: (204) 943-7222 Fax: (204) 947-5717 <http://www.cantecservices.ca/>

PROJECT TITLE
INTERIOR AND EXTERIOR RENOVATIONS V120

SHEET TITLE
DEMOLITION PLAN

DATE (YY MM DD)
15 10 19

SCALE
AS NOTED

CHECKED BY
RS

DRAWN BY
RQS

LOCATION
KUGAARUK, NUNAVUT

CONSTRUCTION
A1.0
REVISION #: 01
JOB NO.
17-058-01-30

01 ISSUED FOR CONSTRUCTION 18 03 22 RS
REV. # REVISION DATE (YY MM DD) REV. BY

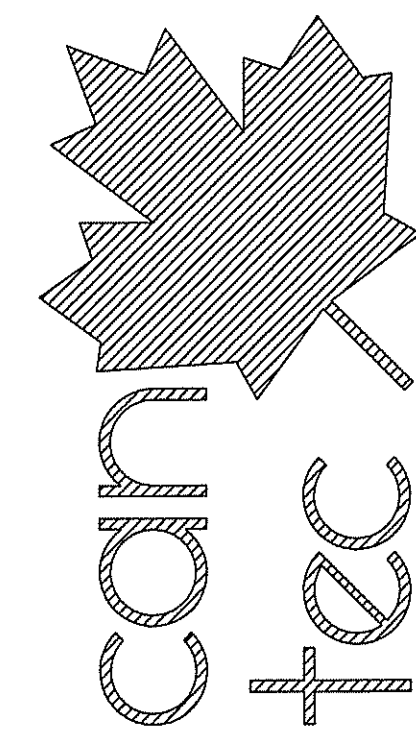
THIS DRAWING MUST NOT BE SCALED.

THE GENERAL CONTRACTOR SHALL VERIFY ALL DIMENSIONS, DATUMS AND LEVELS PRIOR TO COMMENCEMENT OF WORK AND IS HELD RESPONSIBLE FOR REPORTING ANY DISCREPANCY OR OMISSION TO CAN-TEC SERVICES LTD. IMMEDIATELY.

THIS DRAWING IS THE EXCLUSIVE PROPERTY OF CAN-TEC SERVICES LTD. AND CAN BE REPRODUCED ONLY WITH THE PERMISSION OF CAN-TEC SERVICES LTD. IN WHICH CASE THE REPRODUCTION MUST BEAR THEIR NAME AS THE ENGINEERING/DRAFTING FIRM.

http://www.cantecservices.ca/

ENGINEERING AND DRAFTING
1948 MAIN STREET, WINNIPEG, MANITOBA Tel: (204) 943-7222 Fax: (204) 947-5717



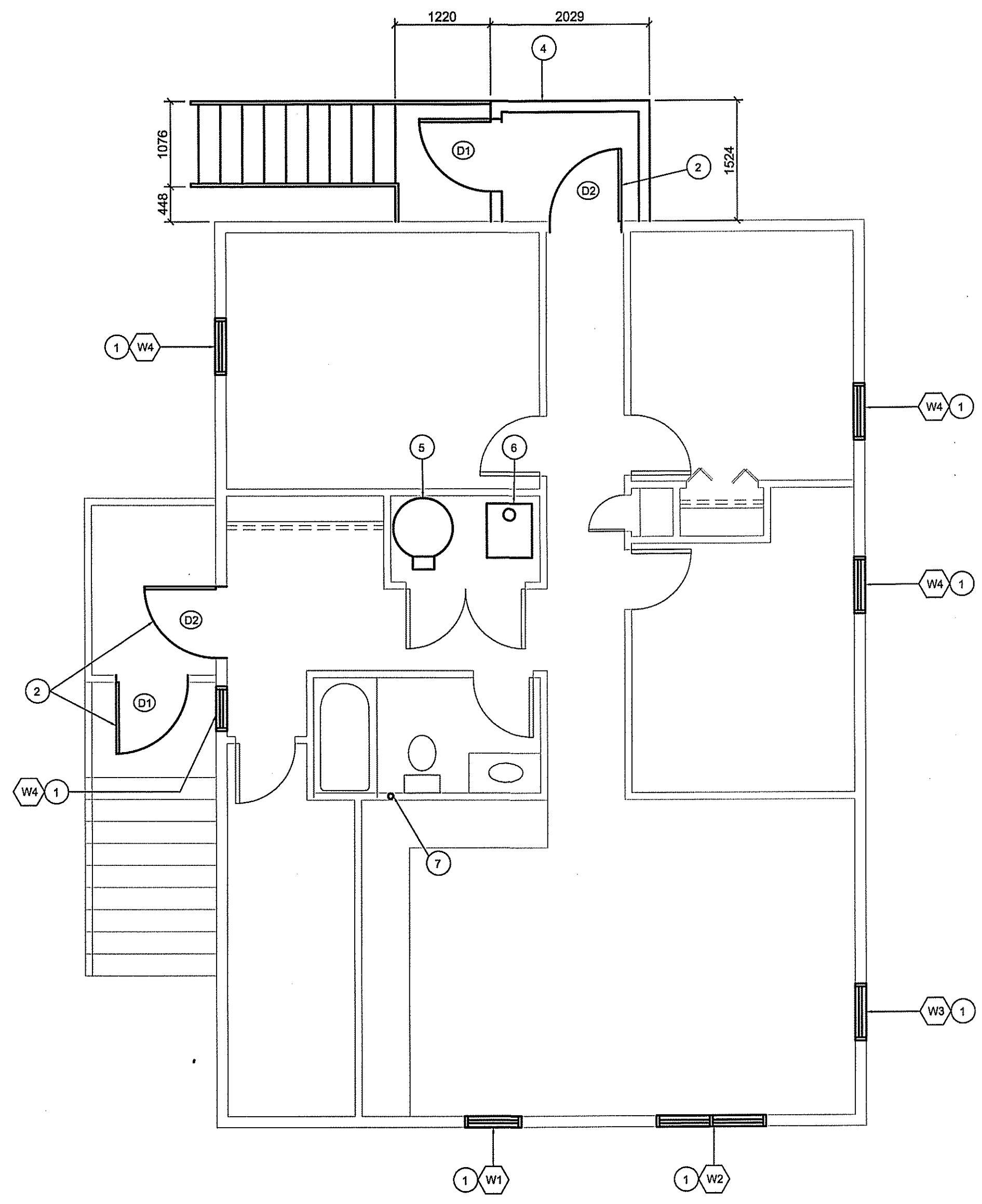
SEALED BY:

DRAWING NOTES #

1. INSTALL NEW WINDOWS, EXTERIOR TRIP AND INTERIOR CASING. NEW CASING TO BE PAINTED TO MATCH EXISTING TRIM
2. INSTALL NEW EXTERIOR DOOR AND STORM DOOR
3. INSTALL NEW EXTERIOR DOOR
4. INSTALL NEW EXTERIOR LANDING, STAIRS AND NEW HANDRAILS. SEE DETAIL SHEET A4.0
5. EXISTING HOT WATER TANK - SEE MECHANICAL
6. INSTALL NEW FURNACE AND CHIMNEY - SEE MECHANICAL
7. MAKE GOOD ANY DAMAGE DONE TO WALL BY THE INSTALLATION OF NEW ARCTIC VENT

GENERAL NOTES

1. INSTALL NEW WINDOW CASING AROUND ALL NEW WINDOWS
2. REPAIR DAMAGE TO CEILING AND WALLS AS REQUIRE TO INSTALL NEW ARCTIC VENT



1 RENOVIATION PLAN
A2.0 SCALE: 1:50

PROJECT TITLE
INTERIOR AND EXTERIOR RENOVATIONS V120

SHEET TITLE
RENOVIATION PLAN

DATE (YY MM DD) 15 10 19
SCALE AS NOTED
DRAWN BY RQS
CHECKED BY RS

LOCATION
KUGAARUK, NUNAVUT

CONSTRUCTION

A2.0

REVISION #: 01

JOB NO. 17-058-01-30

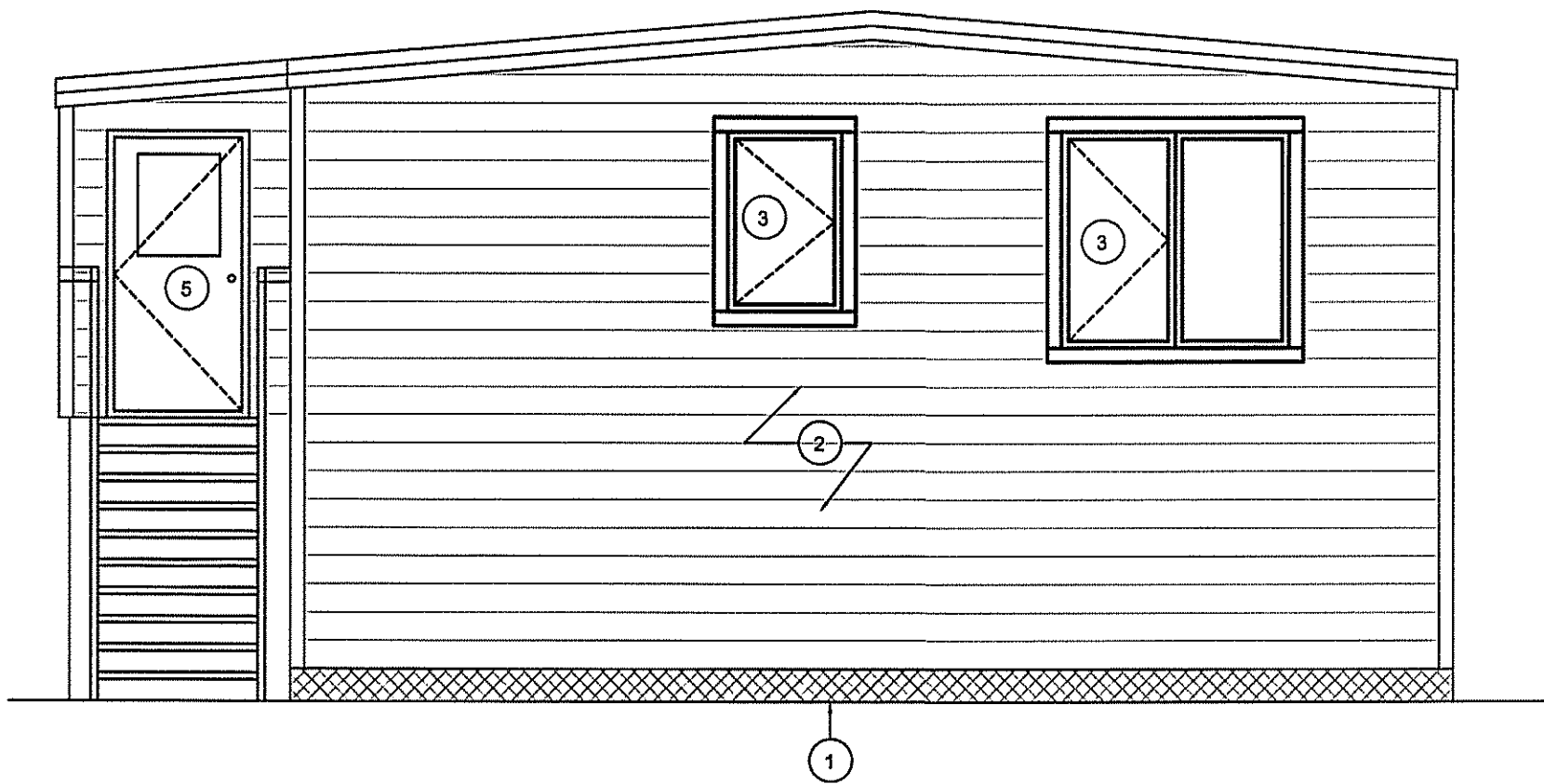
01	ISSUED FOR CONSTRUCTION	18 03 22	RS
REV. #	REVISION	DATE (YY MM DD)	REV. BY

THIS DRAWING MUST NOT BE SCALED.

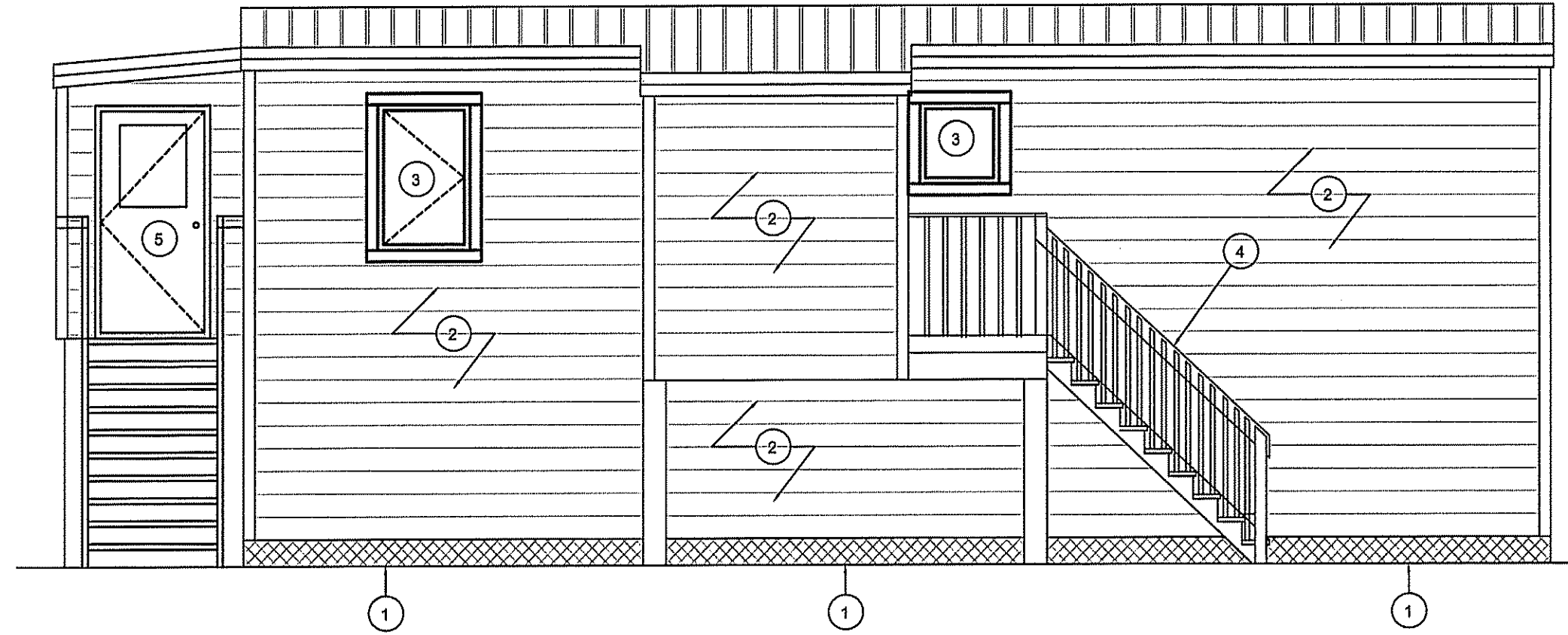
THE GENERAL CONTRACTOR SHALL VERIFY ALL DIMENSIONS, DATUMS AND LEVELS PRIOR TO COMMENCEMENT OF WORK AND IS HELD RESPONSIBLE FOR REPORTING ANY DISCREPANCY OR OMISSION TO CAN-TEC SERVICES LTD. IMMEDIATELY.

THIS DRAWING IS THE EXCLUSIVE PROPERTY OF CAN-TEC SERVICES LTD. AND CAN BE REPRODUCED ONLY WITH THE PERMISSION OF CAN-TEC SERVICES LTD. IN WHICH CASE THE REPRODUCTION MUST BEAR THEIR NAME AS THE ENGINEERING/DRAFTING FIRM.

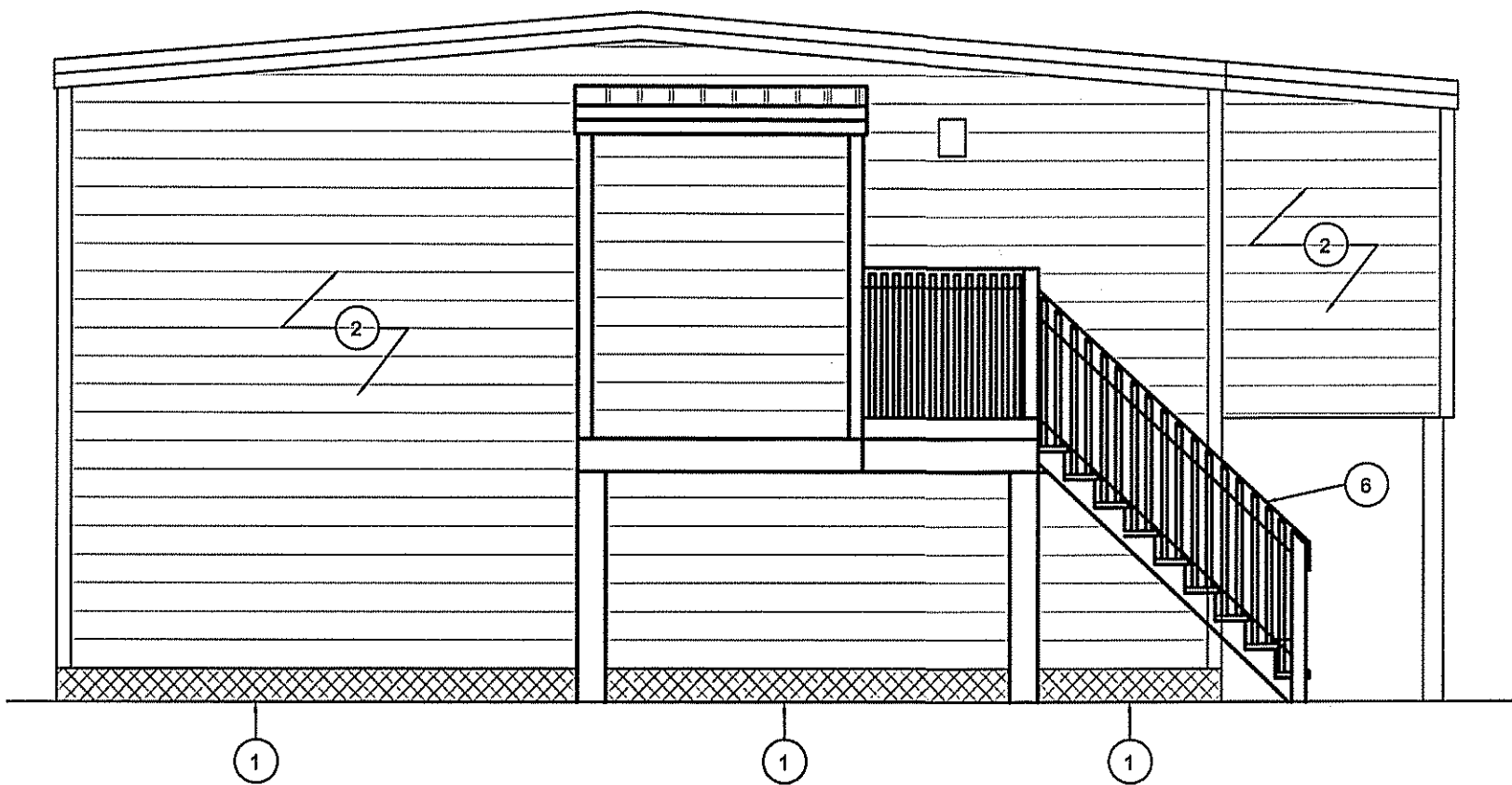
http://www.cantecservices.ca/



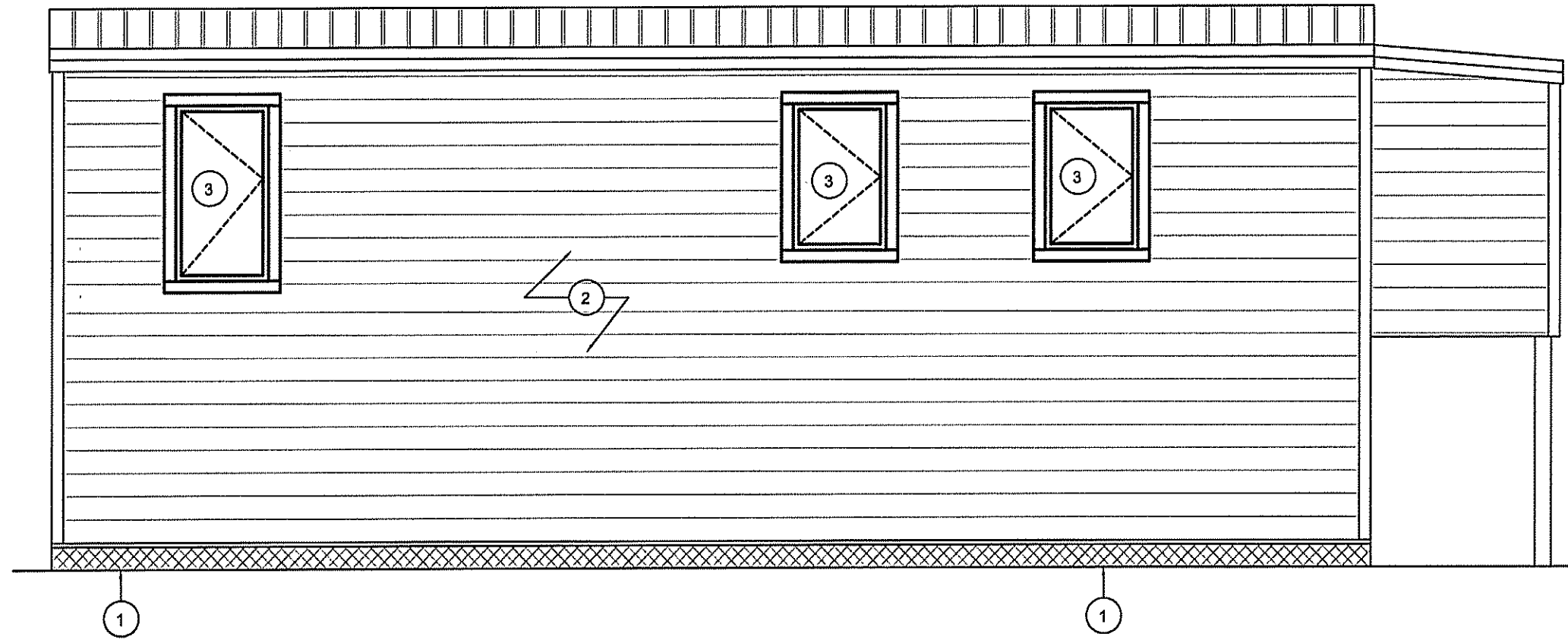
1 FRONT ELEVATION
A3.0 SCALE: 1:50



2 LEFT ELEVATION
A3.0 SCALE: 1:50



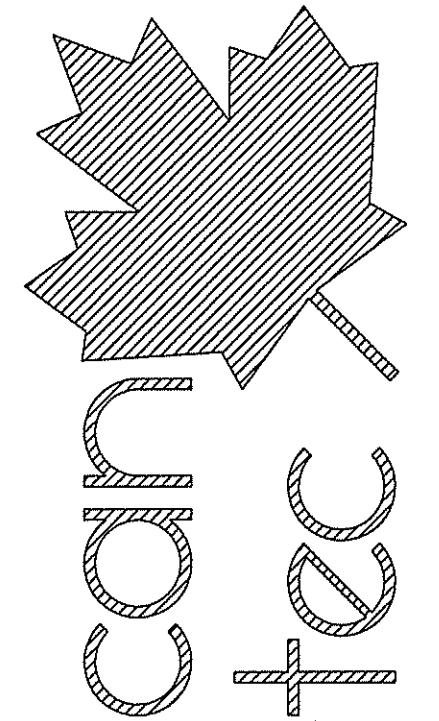
2 REAR ELEVATION
A3.0 SCALE: 1:50



2 RIGHT ELEVATION
A3.0 SCALE: 1:50

DRAWING NOTES: (#)

- 1. INSTALL NEW SKIRTING
- 2. RE-SECURE AND RE-STAIN EXISTING SIDING AND TRIM
- 3. INSTALL NEW WINDOW AND TRIM
- 4. RE-PAINT EXTERIOR DECK AND STAIRS
- 5. INSTALL NEW EXTERIOR DOOR
- 6. INSTALL NEW REAR DECK AND VESTIBULE



ENGINEERING AND DRAFTING
1648 MAIN STREET, WINNIPEG, MANITOBA Tel: (204) 943-7222 Fax: (204) 947-5717

SEALED BY:

PROJECT TITLE
INTERIOR AND EXTERIOR RENOVATIONS V120

SHEET TITLE
ELEVATIONS

DATE (YY MM DD)
15 10 19

SCALE
AS NOTED

CHECKED BY
RS

DRAWN BY
RQS

LOCATION
KUGAARUK, NUNAVUT

CONSTRUCTION

A3.0

REVISION #: 01

JOB NO.

17-058-01-30

01	ISSUED FOR CONSTRUCTION	18 03 22	RS
REV. #	REVISION	DATE (YY MM DD)	REV. BY

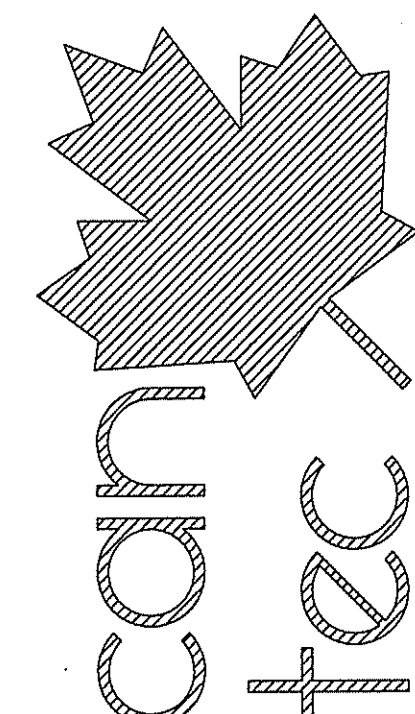
THIS DRAWING MUST NOT BE SCALED.

THE GENERAL CONTRACTOR SHALL VERIFY ALL DIMENSIONS, DATUMS AND LEVELS PRIOR TO COMMENCEMENT OF WORK AND IS HELD RESPONSIBLE FOR REPORTING ANY DISCREPANCY OR OMISSION TO CAN-TEC SERVICES LTD. IMMEDIATELY.

THIS DRAWING IS THE EXCLUSIVE PROPERTY OF CAN-TEC SERVICES LTD. AND CAN BE REPRODUCED ONLY WITH THE PERMISSION OF CAN-TEC SERVICES LTD. IN WHICH CASE THE REPRODUCTION MUST BEAR THEIR NAME AS THE ENGINEERING/DRAFTING FIRM.

http://www.cantecservices.ca/

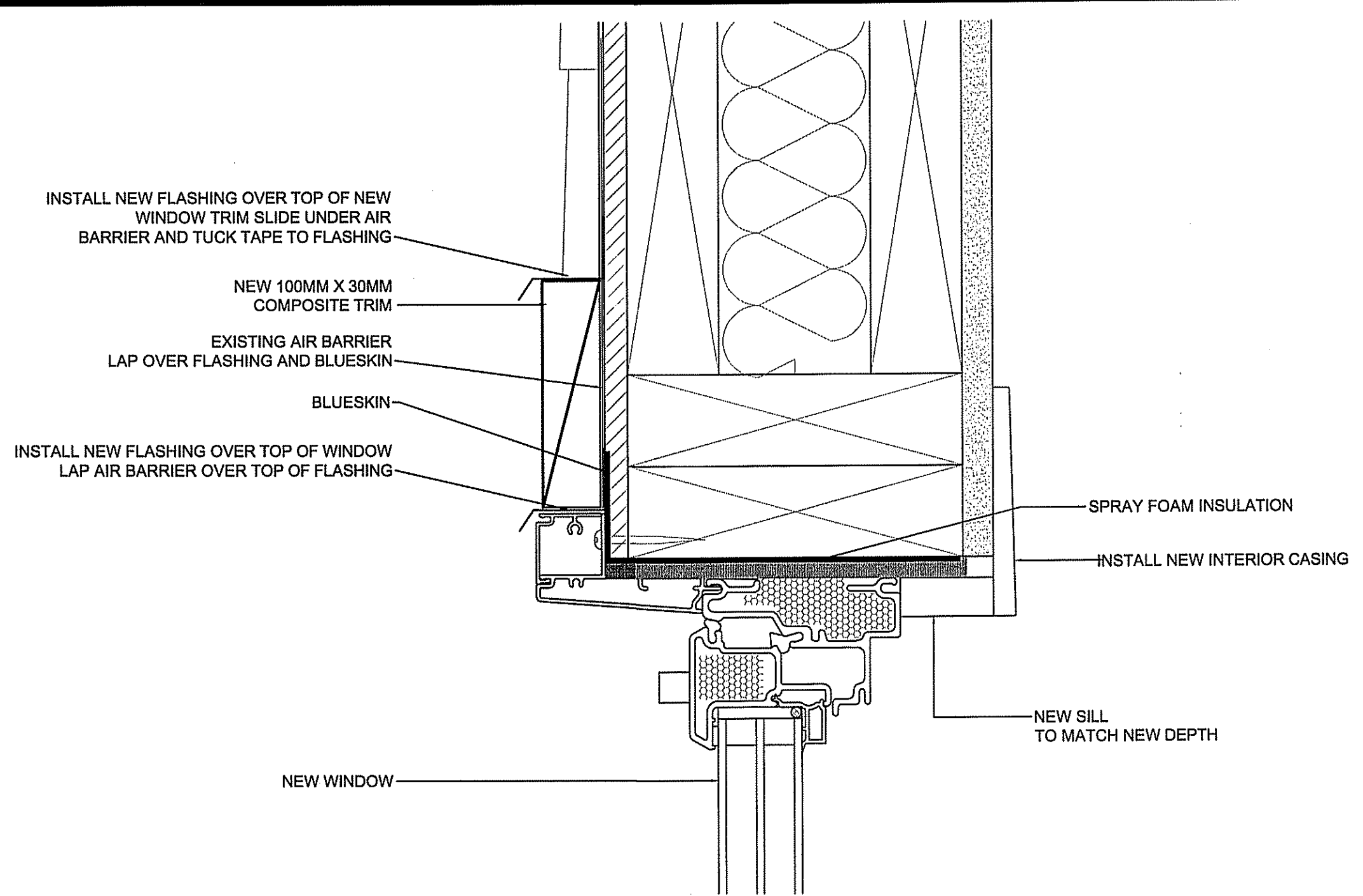
ENGINEERING AND DRAFTING
1948 MAIN STREET, WINNIPEG, MANITOBA
Tel: (204) 943-7222 Fax: (204) 947-5717



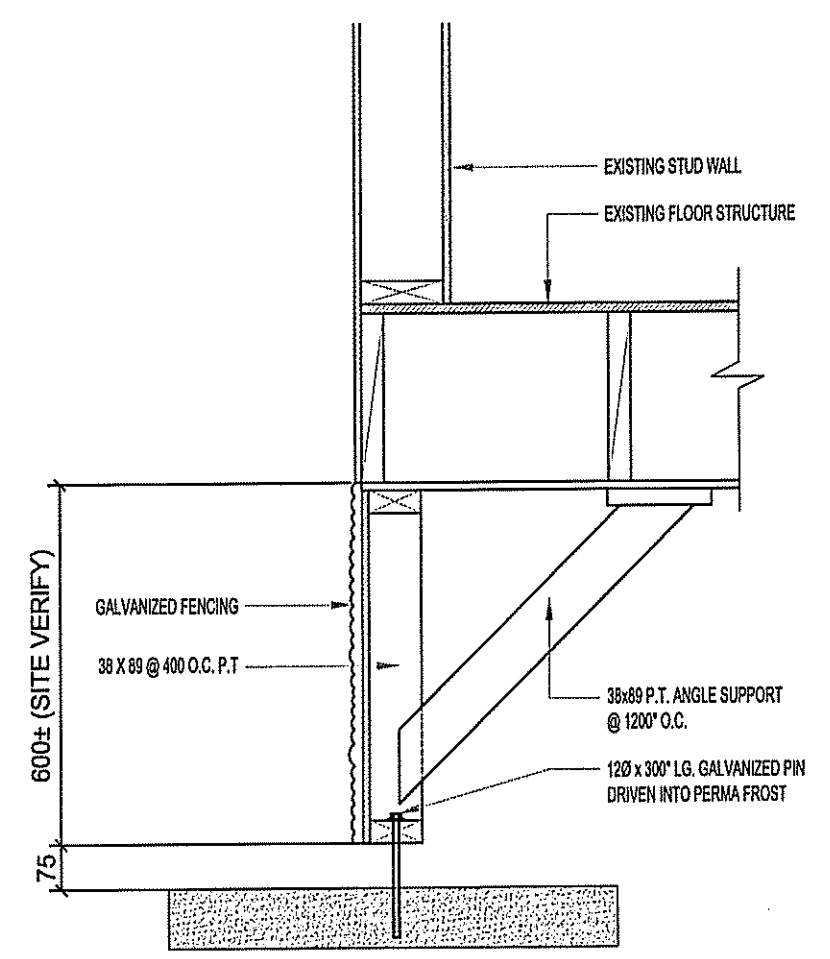
SEALED BY:

WINDOW REPAIR NOTES

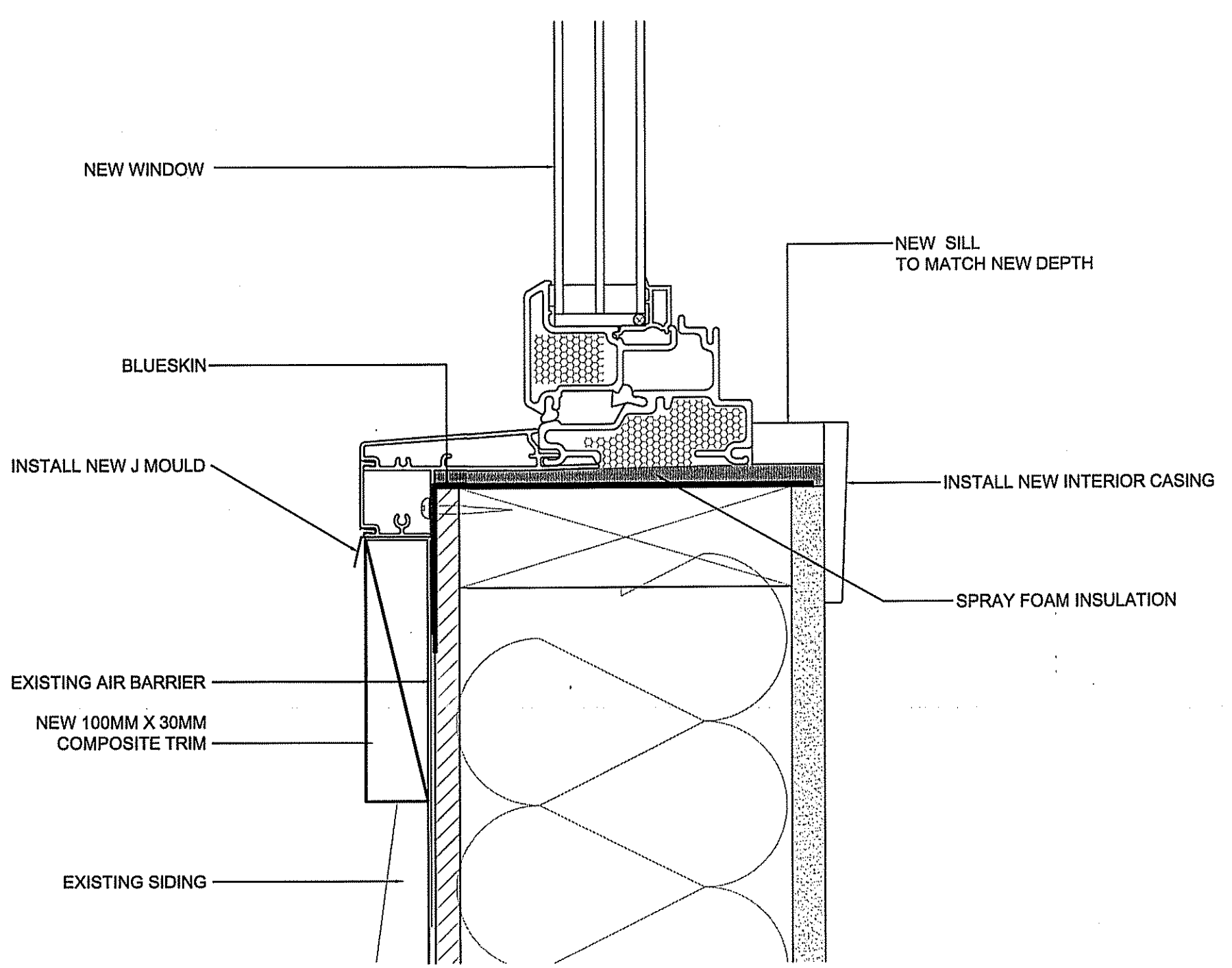
1. REMOVE EXISTING WINDOW AND REPLACE WINDOW
2. CUT BACK EXISTING WOOD SIDING TO ALLOW FOR INSTALLATION OF NEW WINDOW AND EXTERIOR TRIM.
3. INSTALL NEW FLASHING AND J-MOULD AS SHOWN ON DETAIL.



1 WINDOW HEAD REPAIR DETAIL
A4.0 SCALE: 1:2



3 DETAIL OF SKIRTING
A4.0 SCALE: NTS



2 WINDOW HEAD REPAIR DETAIL
A4.0 SCALE: 1:2

PROJECT TITLE
INTERIOR AND EXTERIOR RENOVATIONS V120

SHEET TITLE
DOOR & WINDOW DETAIL SECTION

DATE (YY MM DD)
15 10 19

SCALE
AS NOTED

CHECKED BY
RS

DRAWN BY
RQS

LOCATION
KUGAARUK, NUNAVUT

CONSTRUCTION

A4.0

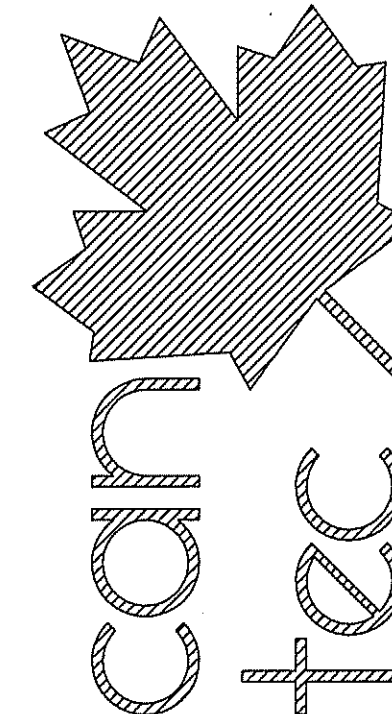
REVISION #: 01

JOB NO. 17-058-01-30

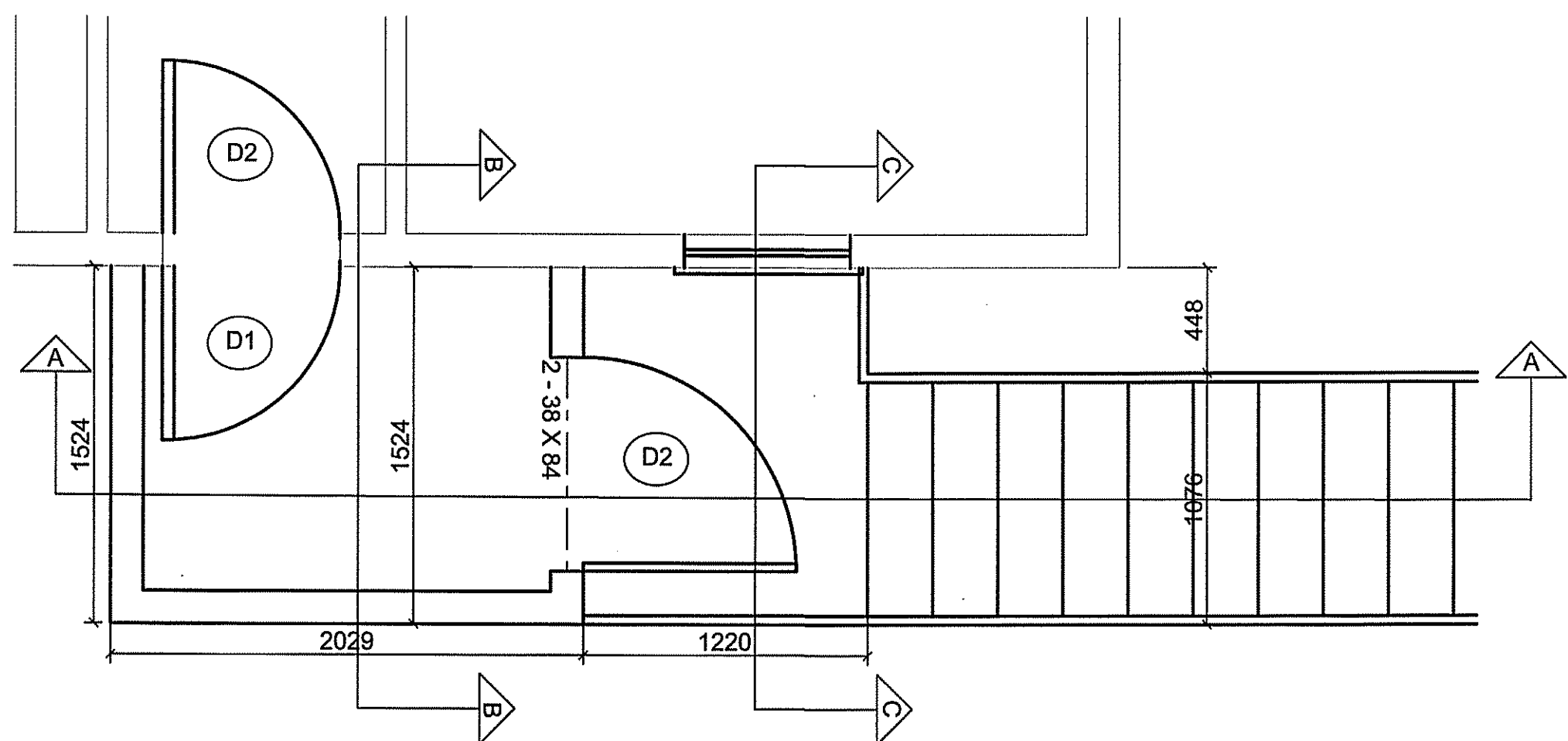
01	ISSUED FOR CONSTRUCTION	18 03 22	RS
REV. #	REVISION	DATE (YY MM DD)	REV. BY

THIS DRAWING MUST NOT BE SCALED.
 THE GENERAL CONTRACTOR SHALL VERIFY ALL DIMENSIONS, DATUMS AND LEVELS PRIOR TO COMMENCEMENT OF WORK AND IS HELD RESPONSIBLE FOR REPORTING ANY DISCREPANCY OR OMISSION TO CAN-TEC SERVICES LTD. IMMEDIATELY.
 THIS DRAWING IS THE EXCLUSIVE PROPERTY OF CAN-TEC SERVICES LTD. AND CAN BE REPRODUCED ONLY WITH THE PERMISSION OF CAN-TEC SERVICES LTD. IN WHICH CASE THE REPRODUCTION MUST BEAR THEIR NAME AS THE ENGINEERING/DRAFTING FIRM.

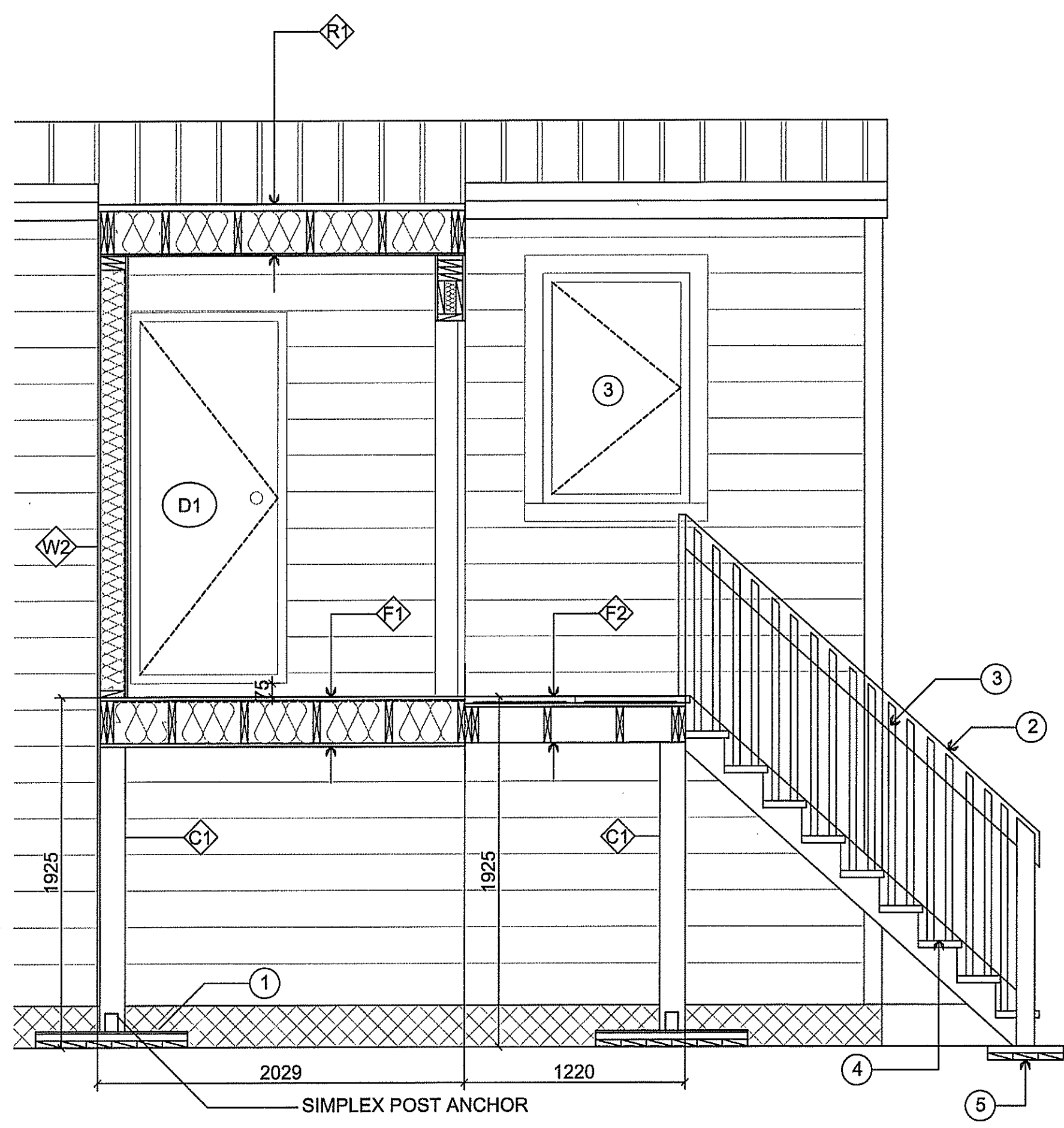
http://www.can-tec-services.ca/



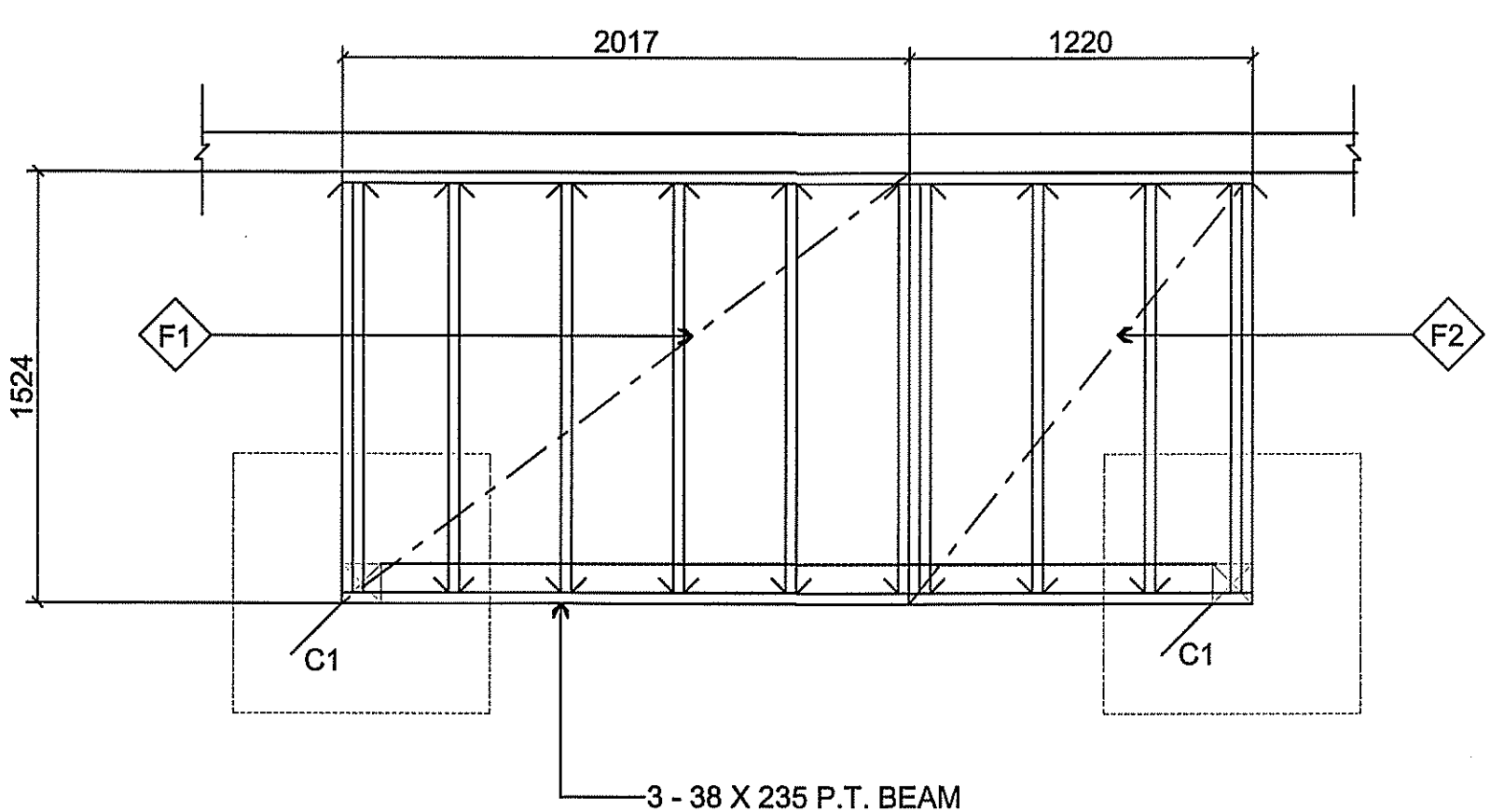
ENGINEERING AND DRAFTING
 1948 MAIN STREET, WINNIPEG, MANITOBA Tel: (204) 943-7222 Fax: (204) 947-5717



1 VESTIBULE PLAN
 A4.1 SCALE: 1:25



3 SECTION A
 A4.1 SCALE: 1:25



2 FRAMING PLAN
 A4.1 SCALE: 1:25

FLOOR SCHEDULE

- F1 19 PLYWOOD GIS
10 MIL AVB
38 X 235 N.2 SP JOISTS @ 400 O.C.
MINERAL FIBER INSULATION
1/2" PLYWOOD
- F2 STEEL GRATING - GRIP SPAN
38 mm DEEP
38 X 235 P.T. JOISTS @ 4000.C.

POST SCHEDULE

- C1 140 X 140 P.T. POST.
762 X 762 X 254 CONCRETE PAD

ROOF SCHEDULE

- R1 26 GA STEEL ROOFING TO MATCH
EXISTING ICE + WATER SHIELD.
12 mm PLYWOOD
38 X 184 JOISTS @ 400 O.C.
FIBERGLASS INSULATION
6 MIL AVB
1/2" PLYWOOD - PAINTED

DRAWING NOTES

- 1 FOOTING PAD 762 X 762 X 100
- 2 HAND RAIL 914 HIGH P.T.
- 3 PICKETS 38 X 38 @ 75 mm BETWEEN EACH PICKET
- 4 GRIP SPAN STAIR TREADS - 280 mm
- 5 2 LAYERS 38 X 40 P.T. PAD UNDER STAIR END

WALL SCHEDULE

- W1 EXISTING WALL
- W2 HARDIE BOARD SIDING COLOR TO MATCH EXISTING
AIR BARRIER
13" PLYWOOD
38 X 89 # 2 SP STUDS @400 O.C.
6 MIL AVB
13 G1S PLYWOOD PAINTED

PROJECT TITLE
INTERIOR AND EXTERIOR RENOVATIONS V002
 SHEET TITLE
DETAILS

DATE (YY MM DD)
 15 10 19
 SCALE
 AS NOTED
 CHECKED BY
 RS
 DRAWN BY
 RQS
 LOCATION
 KUGAARUK, NUNAVUT

CONSTRUCTION

A4.1

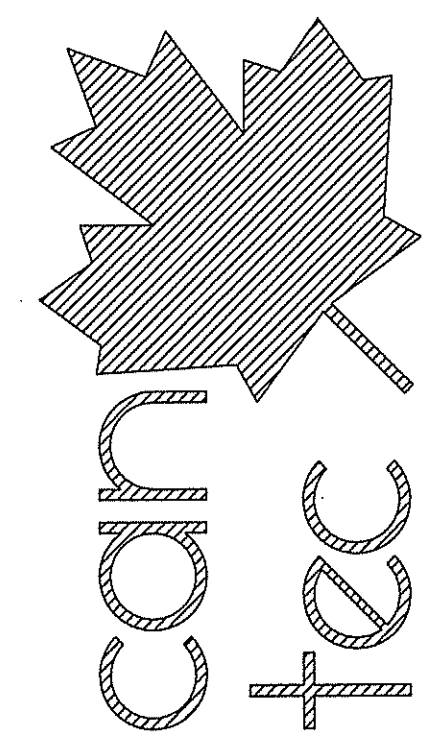
REVISION #: 01

JOB NO.
17-058-01-30

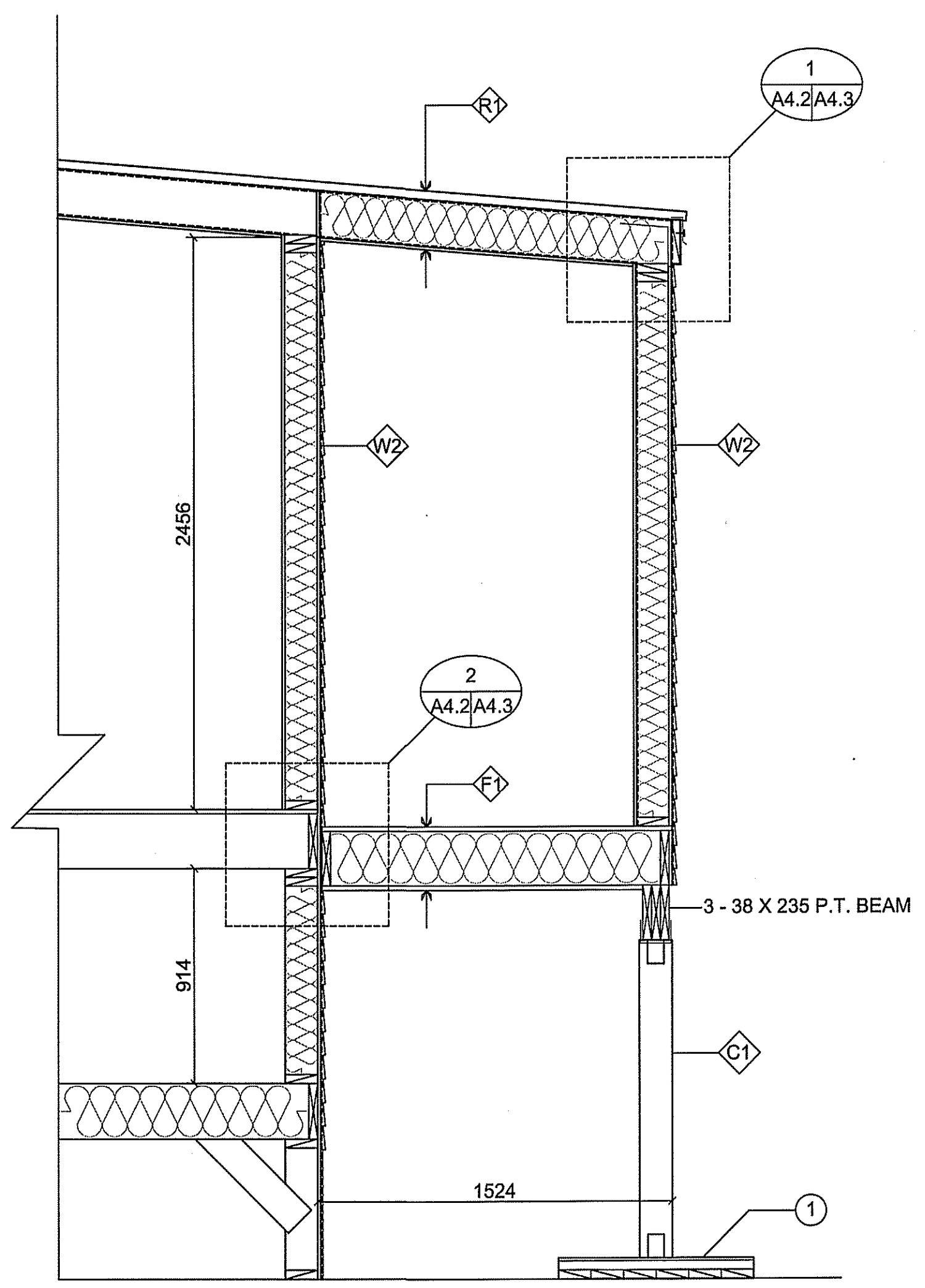
01 ISSUED FOR CONSTRUCTION 18 05 02 RS
 REV. # REVISION DATE (YY MM DD) REV. BY

THIS DRAWING MUST NOT BE SCALED.
 THE GENERAL CONTRACTOR SHALL VERIFY ALL DIMENSIONS, DATUMS AND LEVELS PRIOR TO COMMENCEMENT OF WORK AND IS HELD RESPONSIBLE FOR REPORTING ANY DISCREPANCY OR OMISSION TO CAN-TEC SERVICES LTD. IMMEDIATELY.
 THIS DRAWING IS THE EXCLUSIVE PROPERTY OF CAN-TEC SERVICES LTD. AND CAN BE REPRODUCED ONLY WITH THE PERMISSION OF CAN-TEC SERVICES LTD. IN WHICH CASE THE REPRODUCTION MUST BEAR THEIR NAME AS THE ENGINEERING/DRAFTING FIRM.

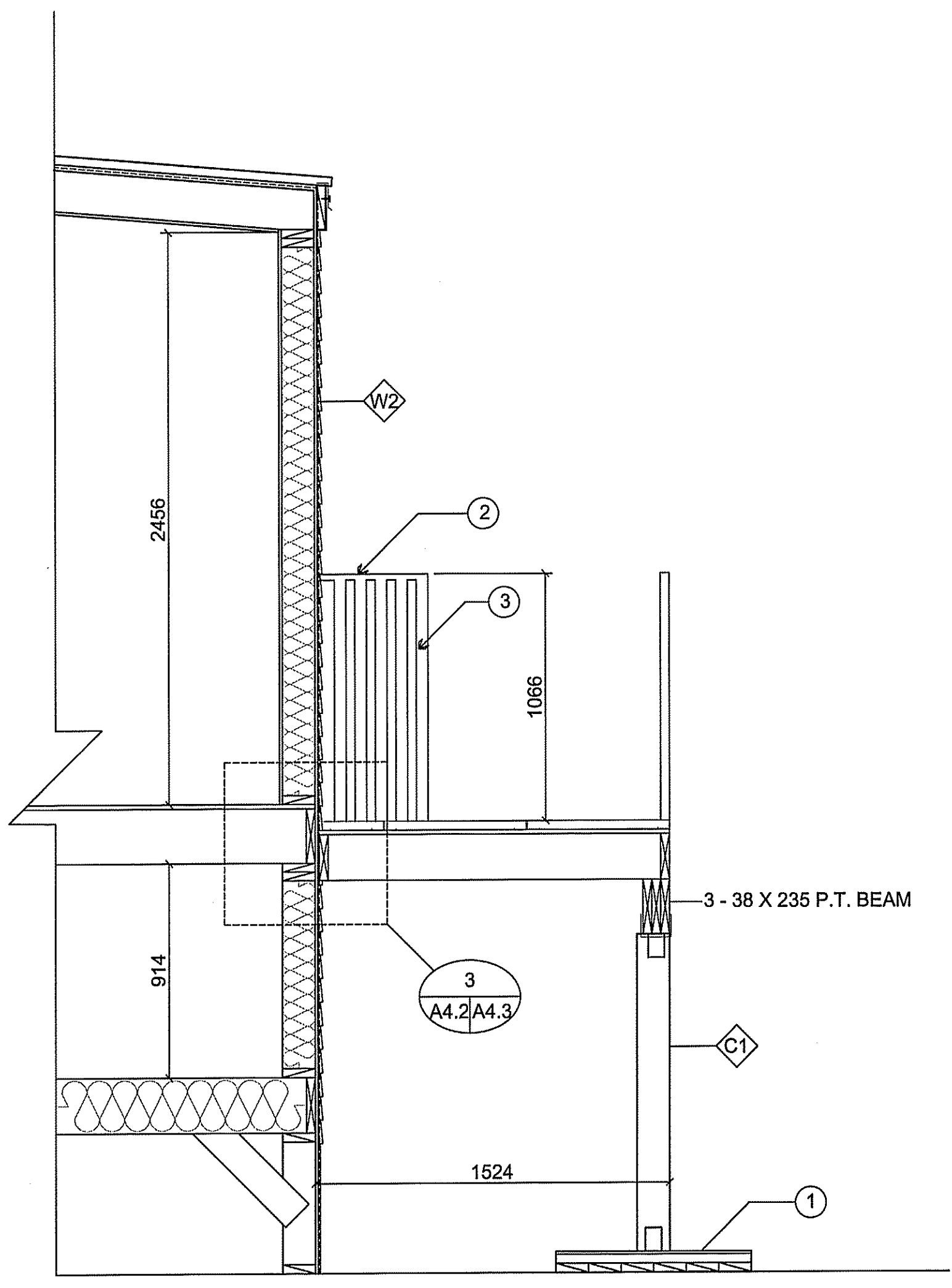
http://www.canteccservices.ca/



ENGINEERING AND DRAFTING
 1848 MAIN STREET, WINNIPEG, MANITOBA
 Tel: (204) 943-7222 Fax: (204) 947-5717



4 SECTION B
 A4.2 SCALE: 1:20



5 SECTION C
 A4.2 SCALE: 1:20

SEALED BY:

PROJECT TITLE
INTERIOR AND EXTERIOR RENOVATIONS V002

SHEET TITLE
DETAILS

DATE (YY MM DD)
 15 10 19

DRAWN BY
 RQS

CHECKED BY
 RS

SCALE
 AS NOTED

LOCATION
 KUGAARUK, NUNAVUT

CONSTRUCTION

A4.2

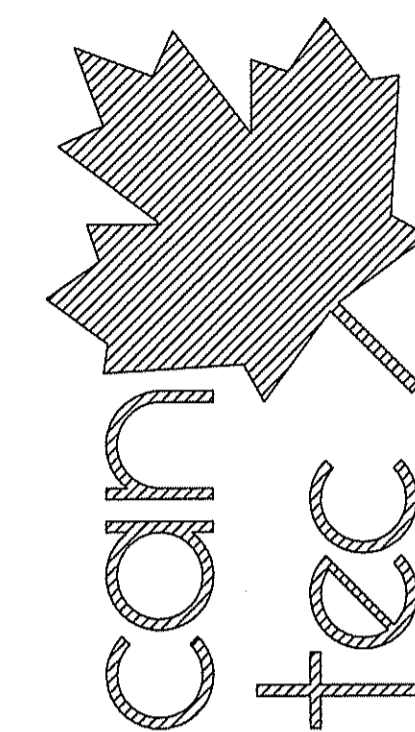
REVISION #: 01

JOB NO.
17-058-01-30

01	ISSUED FOR CONSTRUCTION	18 05 02	RS
REV. #	REVISION	DATE (YY MM DD)	REV. BY

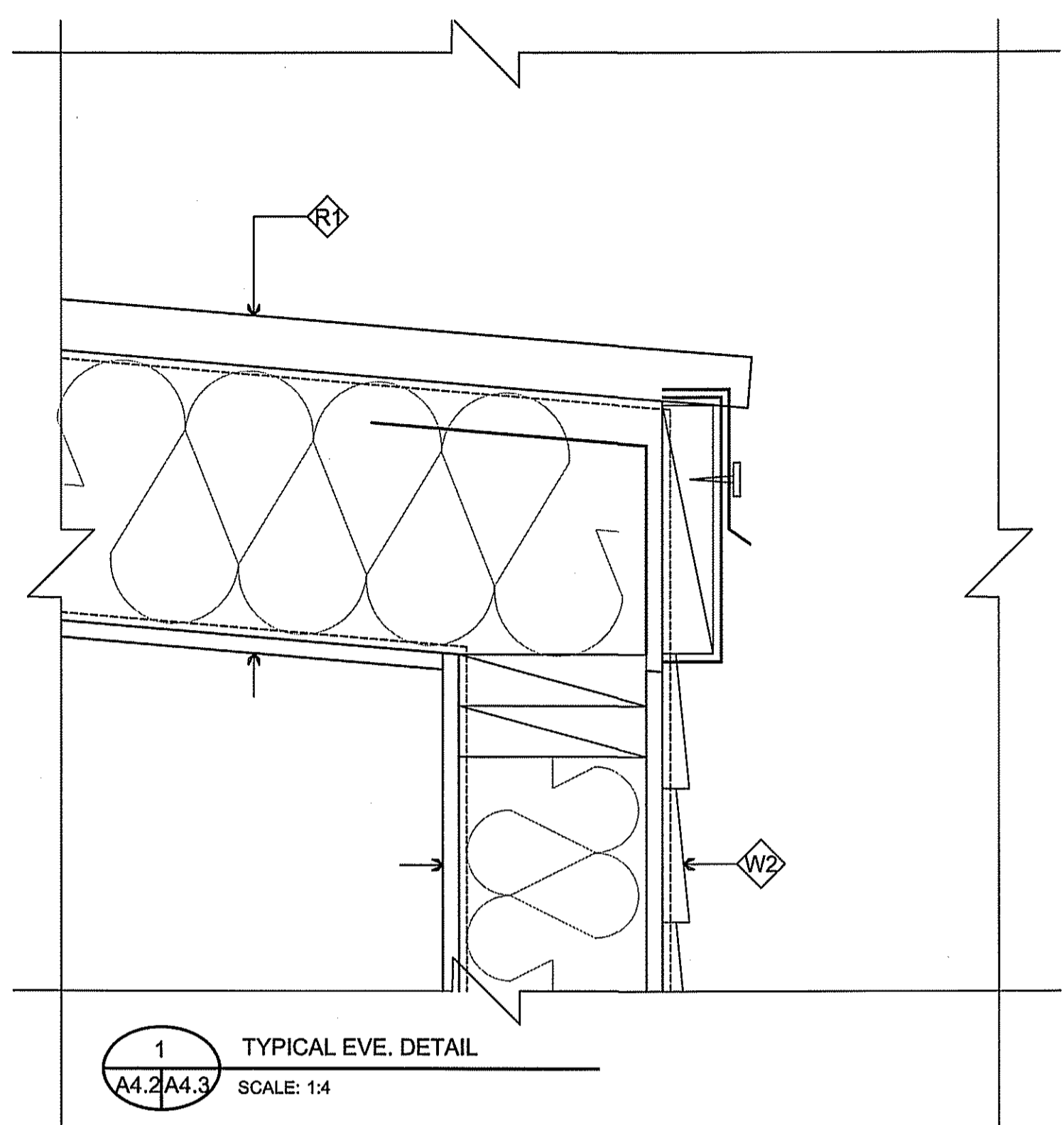
THIS DRAWING MUST NOT BE SCALED.
 THE GENERAL CONTRACTOR SHALL VERIFY ALL DIMENSIONS, DATUMS AND LEVELS PRIOR TO COMMENCEMENT OF WORK AND IS HELD RESPONSIBLE FOR REPORTING ANY DISCREPANCY OR OMISSION TO CAN-TEC SERVICES LTD. IMMEDIATELY.
 THIS DRAWING IS THE EXCLUSIVE PROPERTY OF CAN-TEC SERVICES LTD. AND CAN BE REPRODUCED ONLY WITH THE PERMISSION OF CAN-TEC SERVICES LTD. IN WHICH CASE THE REPRODUCTION MUST BEAR THEIR NAME AS THE ENGINEERING/DRAFTING FIRM.

http://www.cantecservices.ca/

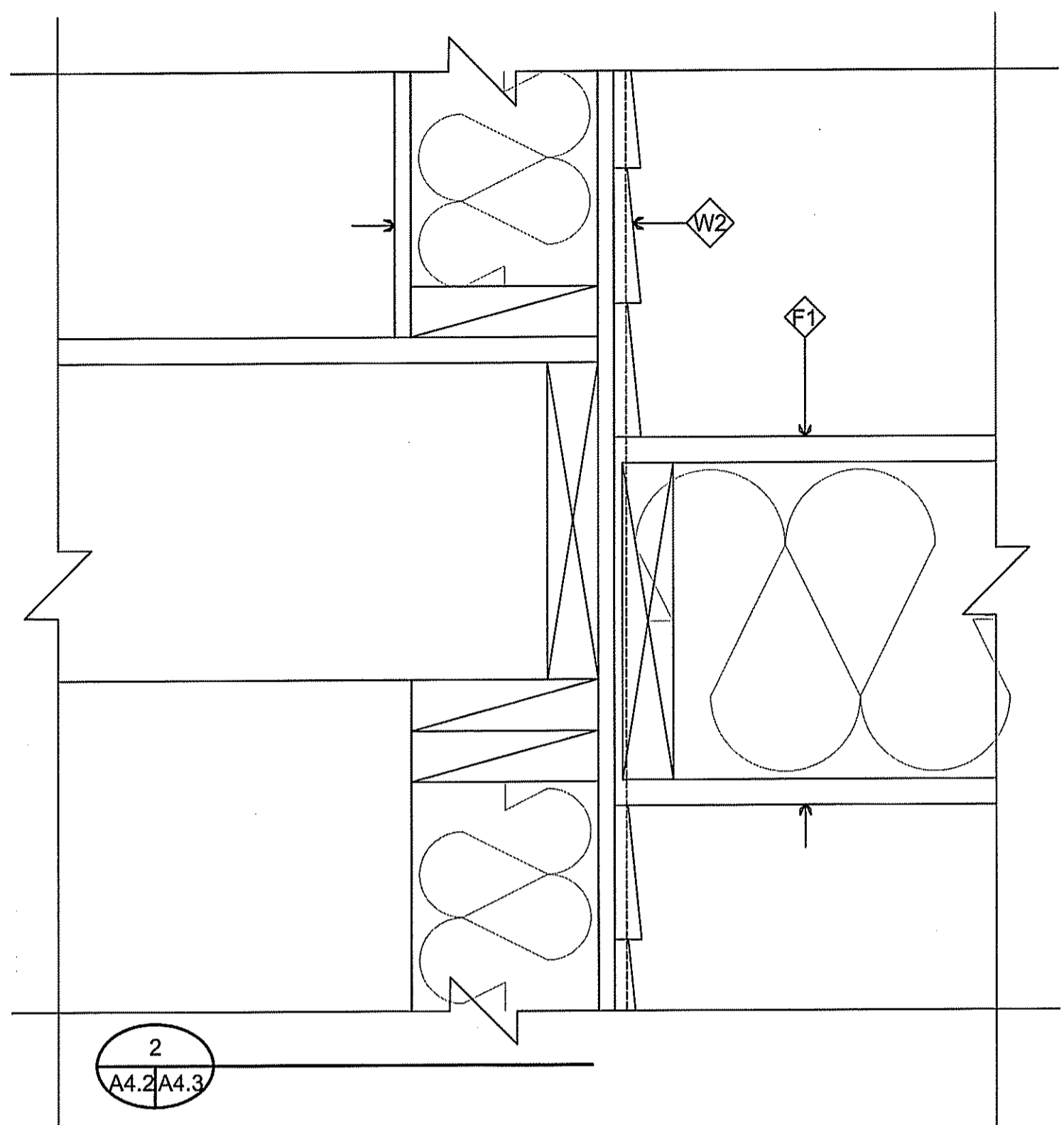


ENGINEERING AND DRAFTING
 1948 MAIN STREET, WINNIPEG, MANITOBA
 Tel: (204) 943-7222 Fax: (204) 947-5717

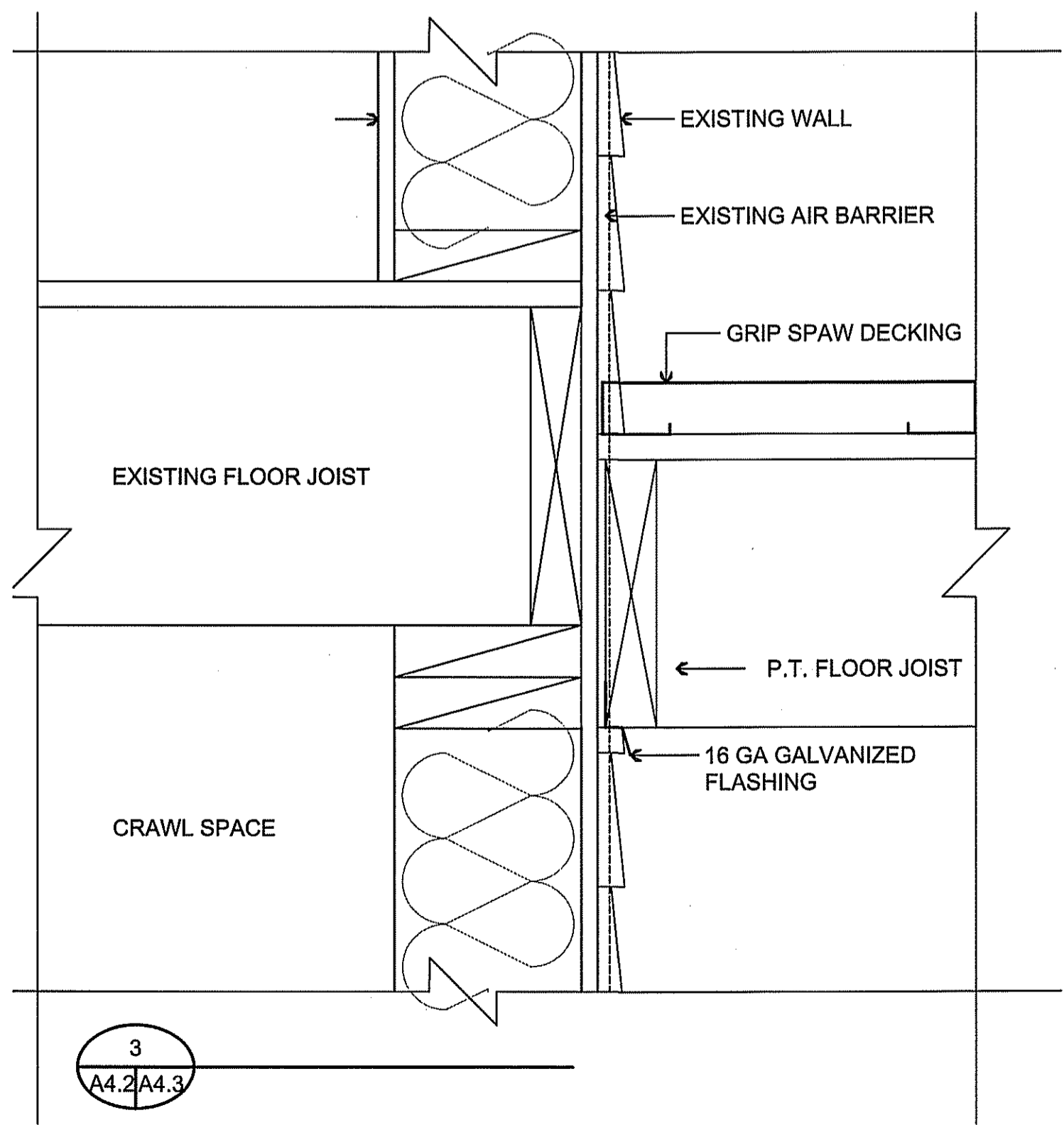
SEALED BY:



1 TYPICAL EVE. DETAIL
 A4.2/A4.3 SCALE: 1:4



2
 A4.2/A4.3



3
 A4.2/A4.3

PROJECT TITLE
INTERIOR AND EXTERIOR RENOVATIONS V002
 SHEET TITLE
DETAILS
 DATE (YY MM DD)
 15 10 19
 SCALE
 AS NOTED
 LOCATION
 KUGAARUK, NUNAVUT

CHECKED BY
 RS

DRAWN BY
 RQS

SCALE
 AS NOTED

LOCATION
 KUGAARUK, NUNAVUT

CONSTRUCTION

A4.3

REVISION #: 01

JOB NO.
 17-058-01-30

REV. #	REVISION	DATE (YY MM DD)	REV. BY
01	ISSUED FOR CONSTRUCTION	18 05 02	RS

DOOR SCHEDULE (D#)

MARK	SIZE	TYPE	ELEV	FRAME	HARDWARE	REMARKS
D1	914 X 2032 X 38	INSULATED FIBERGLASS STORM DOOR	B	A	2	WINDOW 1/2 LITE
D2	914 X 2032 X 38	INSULATED FIBERGLASS EXTERIOR DOOR	A	A	1	
D3	914 X 2032 X 38	INSULATED FIBERGLASS STORM DOOR	B	A	2	WINDOW 1/2 LITE
D4	914 X 2032 X 38	INSULATED FIBERGLASS EXTERIOR DOOR	A	A	1	

NOTES:

1. ALL DOORS ACTUAL SIZES TO BE VERIFIED ON SITE.
2. SEE DOOR STANDARD SECTION DETAILS
3. INSTALL NEW CASING AROUND ALL DOORS SEE SPEC. FOR DETAILS

DOOR HARDWARE GROUPS

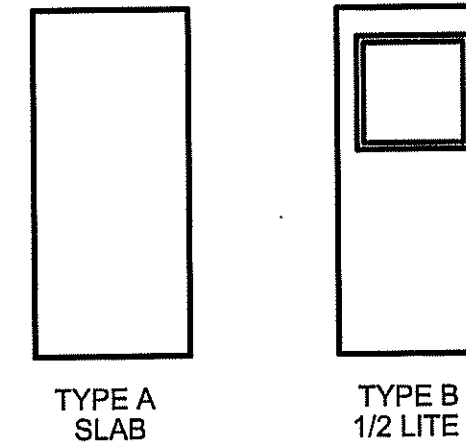
Grp 1	HINGES	Complete by Door supplier		
	LOCKSET	AL53PD NEP	626	SCHLAGE
	DEADLOCK	B660P	626	SCHLAGE
	FLOOR STOP	S100 Series	626	STD. METAL
	DOOR VIEWER	698	626	CANAROPA
	WHEATHERSTRIP, SWEEPS AND THRESHOLD COMPLETE BY DOOR SUPPLIER			

DOOR HARDWARE GROUPS

Grp 2	HINGES	Complete by Door supplier		
	LOCKSET	AL53PD NEP	626	SCHLAGE
	FLOOR STOP	S100 Series	626	STD. METAL
	WHEATHERSTRIP, SWEEPS AND THRESHOLD COMPLETE BY DOOR SUPPLIER			

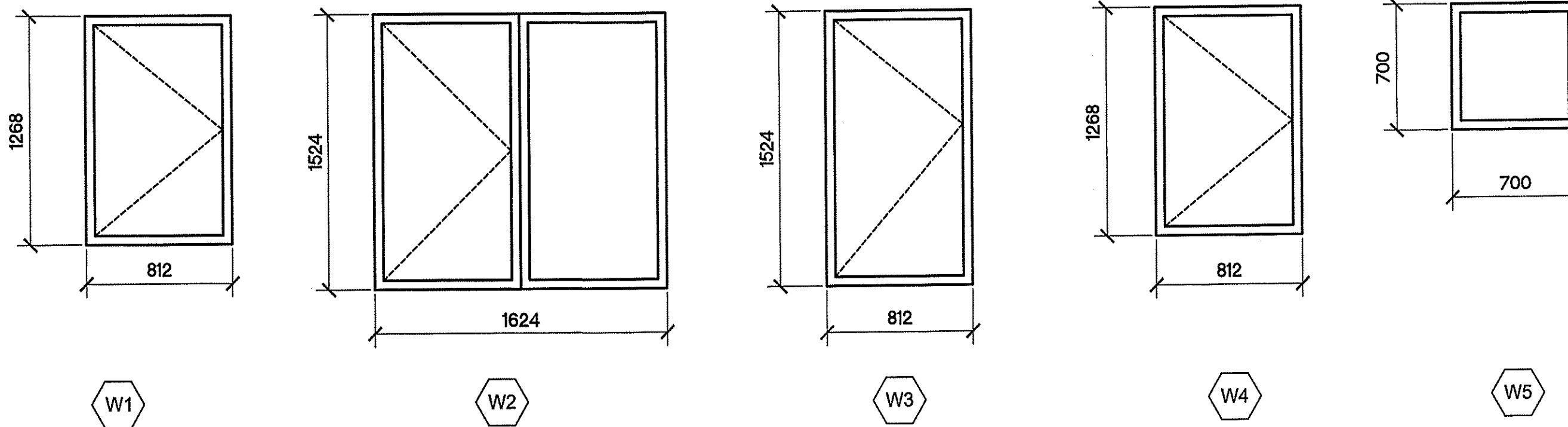
DOOR DETAILS

DOOR ELEVATIONS



DOOR FRAME DETAILS

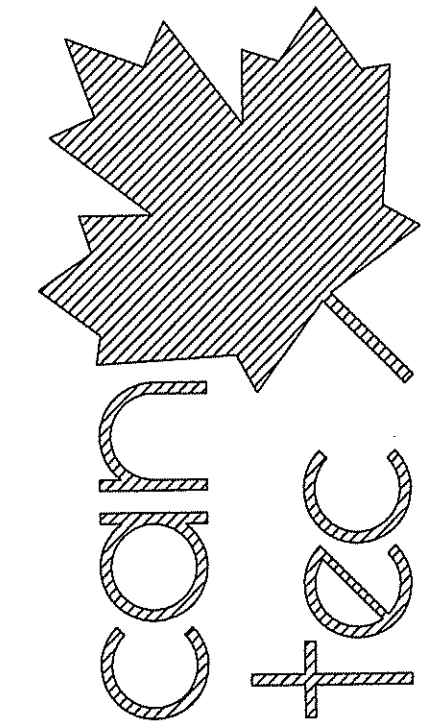
A - MANUF SUPPLIED WOOD DOOR FRAMES C/W THERMALLY BROKEN THRESHOLD



NOTES:

1. 6 MIL POLY RETURNED INTO ROUGH WINDOW OPENING AND SEALED TO WOOD FRAMING
2. AIR BARRIER RETURNED INTO ROUGH WINDOW OPENING AND SEALED TO WOOD FRAMING
3. SPRAY FOAM INSULATION INTO SPACES BETWEEN WINDOW AND ROUGH OPENING
4. PROVIDE PRE FINISHED POST FORMED GALVANIZED STEEL FLASHING FULL WIDTH OF WINDOW AT TOP OF WINDOW
5. BEDROOM WINDOWS MUST MEET NBC EGRESS REQUIREMENTS AS PER 9.7.1.3.2
6. INSTALL NEW WINDOW AND DOOR CASING TO ALL UNITS BEING REPLACED.

THIS DRAWING MUST NOT BE SCALED.
 THE GENERAL CONTRACTOR SHALL VERIFY ALL DIMENSIONS, DATUMS AND LEVELS PRIOR TO COMMENCEMENT OF WORK AND IS HELD RESPONSIBLE FOR REPORTING ANY DISCREPANCY OR OMISSION TO CAN-TEC SERVICES LTD. IMMEDIATELY.
 THIS DRAWING IS THE EXCLUSIVE PROPERTY OF CAN-TEC SERVICES LTD. AND CAN BE REPRODUCED ONLY WITH THE PERMISSION OF CAN-TEC SERVICES LTD. IN WHICH CASE THE REPRODUCTION MUST BEAR THEIR NAME AS THE ENGINEERING/DRAFTING FIRM.



ENGINEERING AND DRAFTING
 1648 MAIN STREET, WINNIPEG, MANITOBA Tel: (204) 943-7229 Fax: (204) 947-5717
<http://www.cantecservices.ca/>

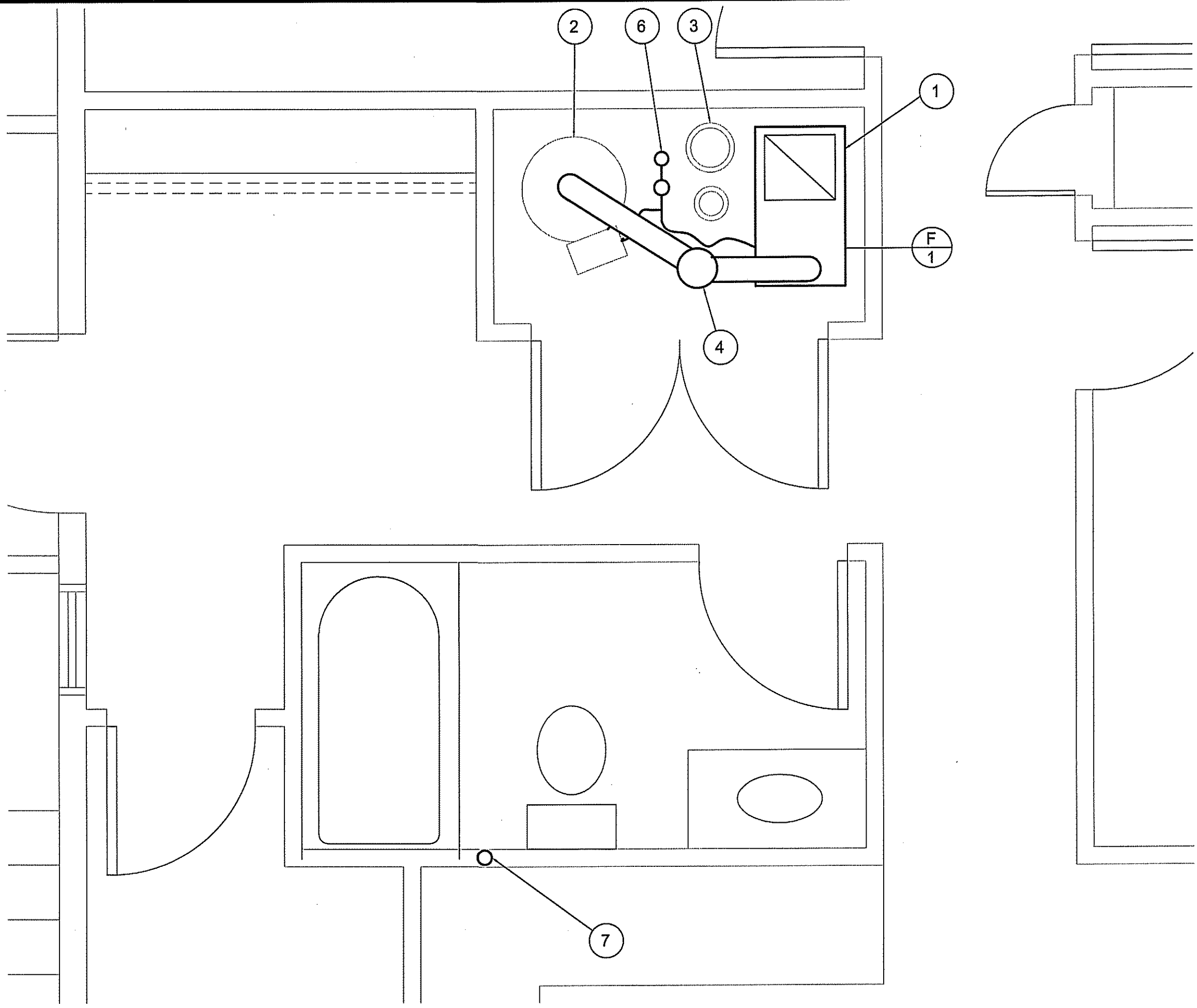
SEALED BY:

PROJECT TITLE
INTERIOR AND EXTERIOR RENOVATIONS V120
 SHEET TITLE
DOORS & WINDOWS SCHEDULE / DETAILS
 DATE (YY MM DD)
 15 10 19
 SCALE
 AS NOTED
 CHECKED BY
 RS
 DRAWN BY
 RQS
 LOCATION
 KUGAARUK, NUNAVUT

CONSTRUCTION
A8.0
 REVISION #: 01
 JOB NO.

01 ISSUED FOR CONSTRUCTION 18 03 22 RS
 REV. # REVISION DATE (YY MM DD) REV. BY

17-058-01-30



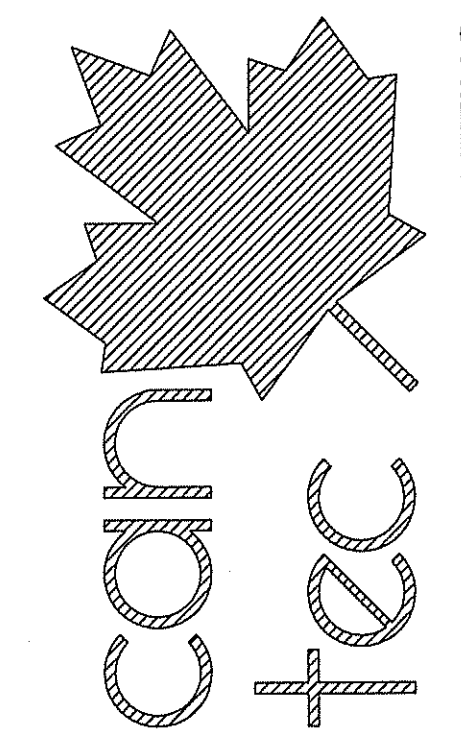
DRAWING NOTES: #

1. REMOVE AND REPLACE EXISTING FURNACE. (FURNACE IS A DOWN DRAFT FURNACE) - SITE VERIFY
2. EXISTING HOT WATER TANK TO REMAIN
3. EXISTING 200Ø COMBUSTION AIR
4. INSTALL COMPLETE NEW CHIMNEY FROM NEW FURNACE AND EXISTING HOT WATER TANK.
5. EXISTING FRESH AIR TO RETURN OF FURNACE PLENUM
6. EXISTING FUEL LINE FROM CRAWL SPACE SEE FUEL TANK DRAWINGS FOR REPLACEMENT DETAILS.
7. REMOVE EXISTING VENT THROUGH ROOF TO BE REMOVED AND REPLACED WITH ARCTIC VENT. SUPPLY POWER FROM EXISTING ELECTRICAL PANEL SITE VERIFY EXACT LOCATION
8. INSTALL NEW GENERATOR CONNECTION

SPECIFICATION:

ARCTIC VENT: HEAT LINE INDUSTRIES
ELECTRIC - ARCTIC VENT.

THIS DRAWING MUST NOT BE SCALED.
THE GENERAL CONTRACTOR SHALL VERIFY ALL DIMENSIONS, DATUMS AND LEVELS PRIOR TO COMMENCEMENT OF WORK AND IS HELD RESPONSIBLE FOR REPORTING ANY DISCREPANCY OR OMISSION TO CAN-TEC SERVICES LTD. IMMEDIATELY.
THIS DRAWING IS THE EXCLUSIVE PROPERTY OF CAN-TEC SERVICES LTD. AND CAN BE REPRODUCED ONLY WITH THE PERMISSION OF CAN-TEC SERVICES LTD. IN WHICH CASE THE REPRODUCTION MUST BEAR THEIR NAME AS THE ENGINEERING/DRAFTING FIRM.



ENGINEERING AND DRAFTING
1948 MAIN STREET, WINNIPEG, MANITOBA Tel: (204) 943-7222 Fax: (204) 947-5717
<http://www.cantecservices.ca/>

SEALED BY:

PROJECT TITLE
INTERIOR AND EXTERIOR RENOVATIONS V120

SHEET TITLE
MECHANICAL AND ELECTRICAL

DATE (YY MM DD) 18 03 25
SCALE AS NOTED
DRAWN BY RQS
CHECKED BY RS

LOCATION
KUGAARUK, NUNAVUT

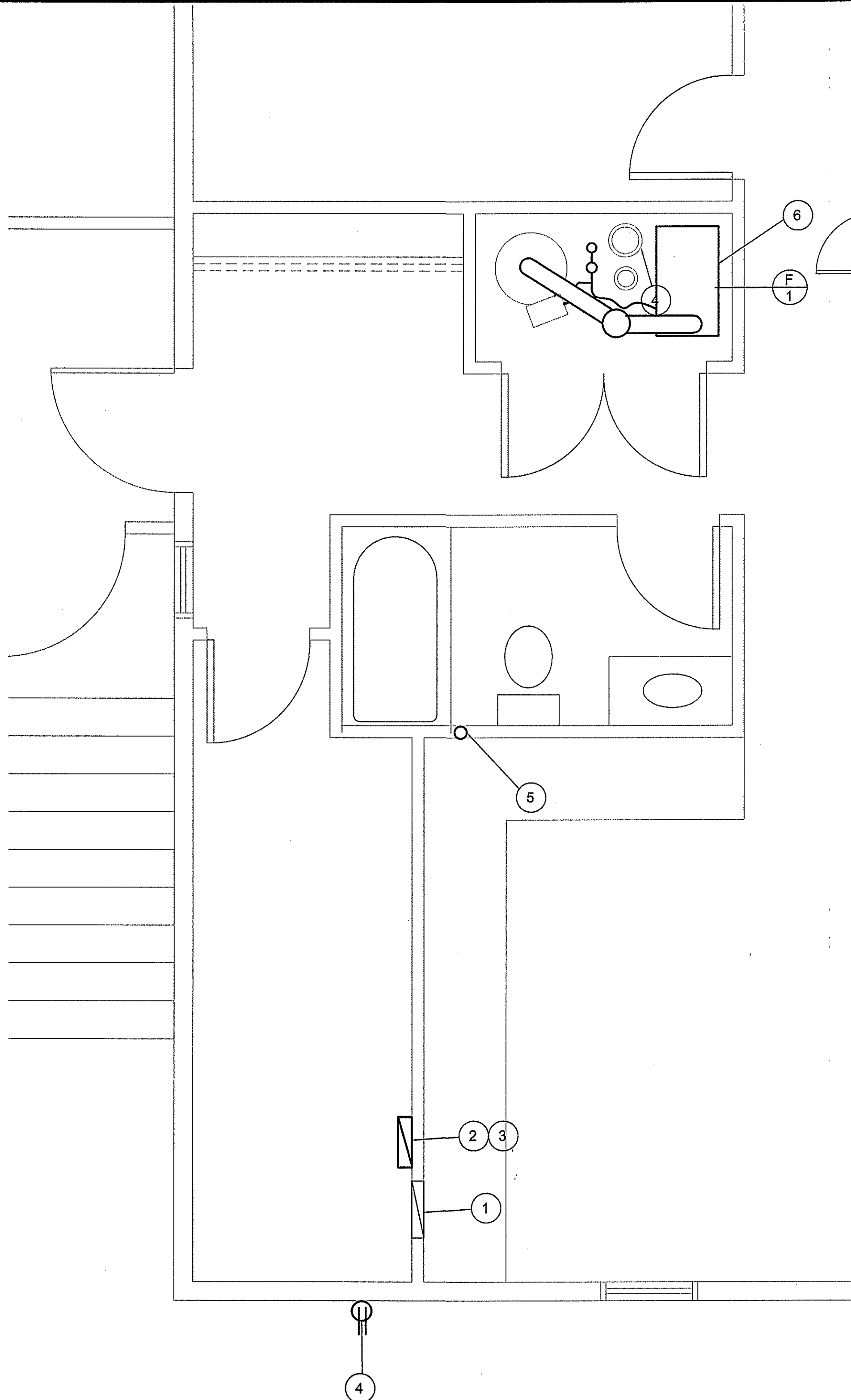
CONSTRUCTION

M1.0

REVISION #: 01

JOB NO. 17-058-01-30

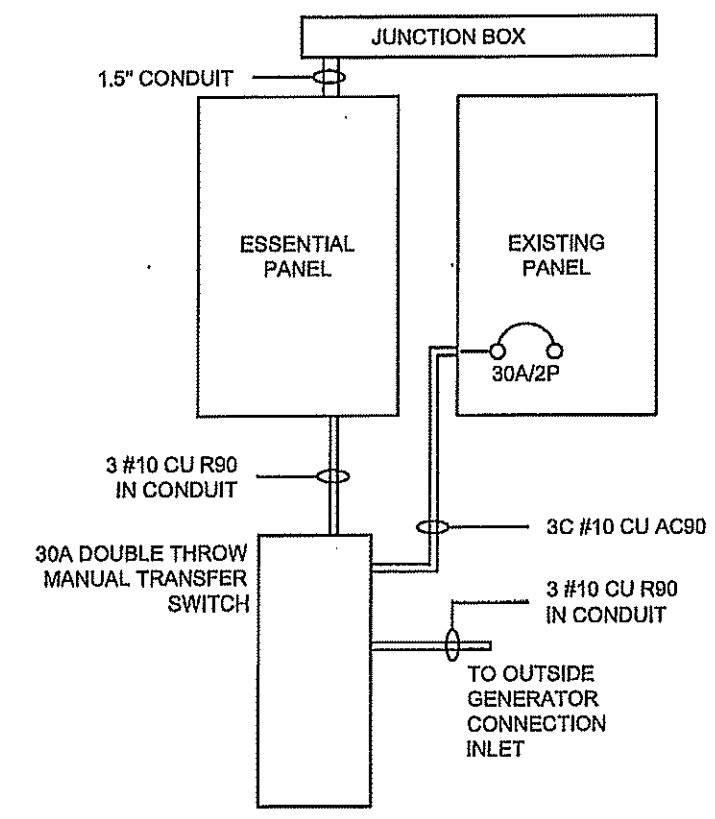
REV. #	REVISION	DATE (YY MM DD)	REV. BY
01	ISSUED FOR CONSTRUCTION	18 03 22	RS



1 PARTIAL MAIN FLOOR PLAN
E1.0 SCALE: 1:25

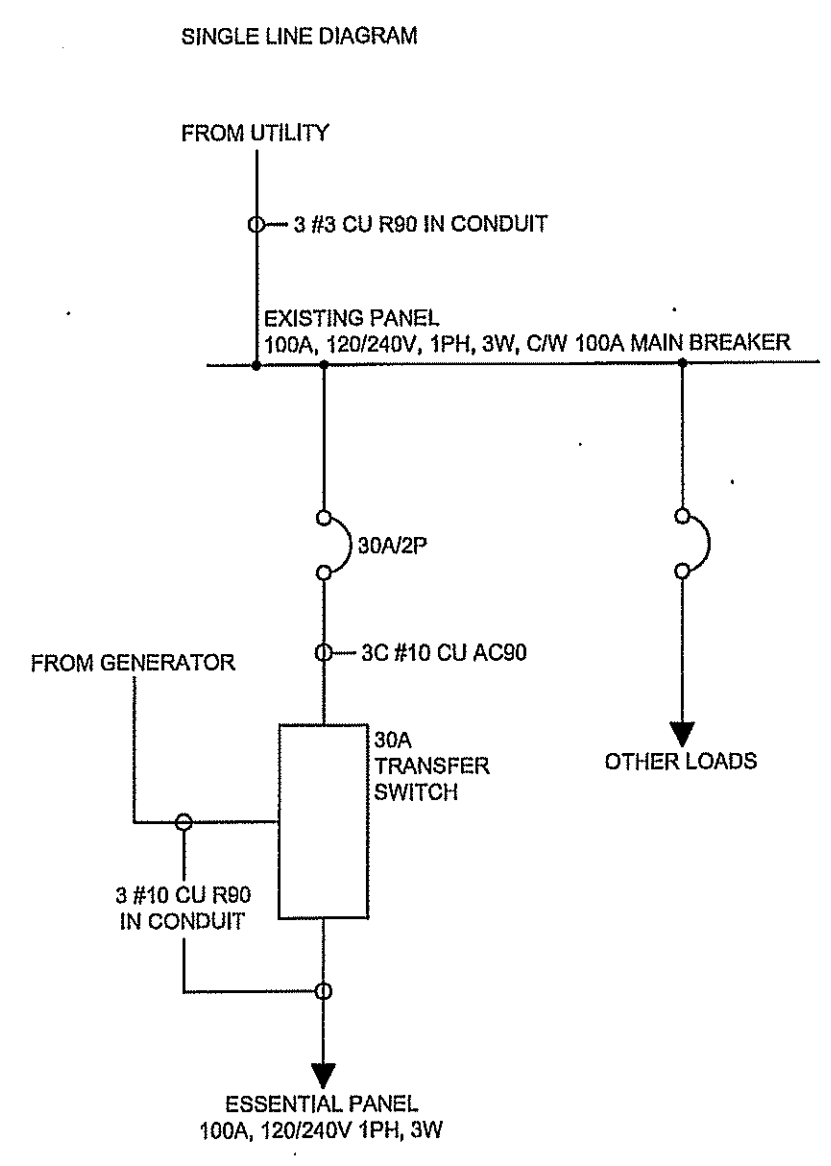
- DRAWING NOTES: #**
- EXISTING ELECTRICAL PANEL
 - NEW ESSENTIAL PANEL
 - NEW TRANSFER SWITCH
 - NEW GENERATOR CONNECTION
 - NEW POWER FOR ARCTIC VENT
 - DISCONNECT FURNACE AND RECONNECT NEW FURNACE.

- NOTES:**
- INSTALL IN ESSENTIAL PANEL, FURNACE, HOT WATER TANK, WATER PUMPS, MICROWAVE, FRIDGE, HEAT TAPE (IF IN BUILDING), COUNTER RECEPTACLES, LIGHTS.
 - ADJUST ESSENTIAL PANEL TO ACCOMMODATE GENERATOR ON SITE,
 - MODIFY SINGLE LINE DIAGRAM AS REQUIRED TO FIT SITE CONDITIONS.

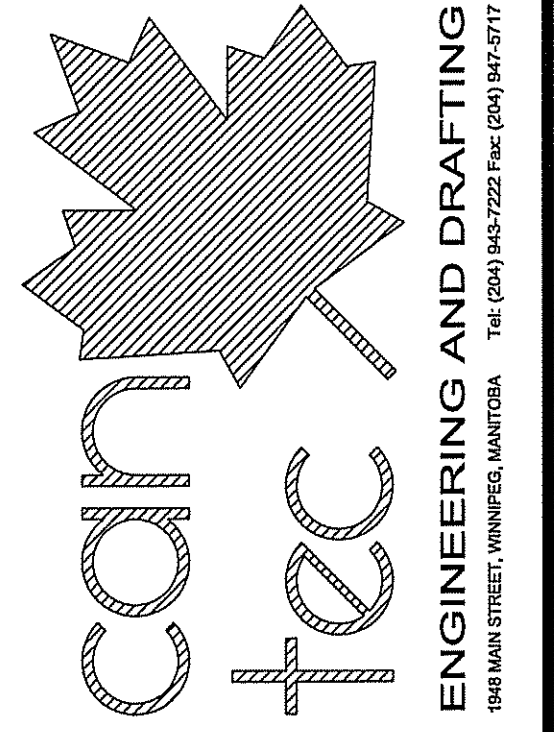


- NOTES:**
- NEW COMPONENTS SURFACE MOUNTED.
 - REMOVE CIRCUITS (SHOWN ON DIRECTORY) FROM EXISTING PANEL AND REEFED THEM FROM NEW ESSENTIAL PANEL THROUGH JUNCTION BOX.
 - DO NOT GROUND THE CONNECTION FROM GENERATOR.
 - ADJUST LAYOUT OF COMPONENTS AS NECESSARY TO FIT AVAILABLE SPACE.

2 TYPICAL GENERATOR CONNECTION
E1.0 SCALE: NTS



THIS DRAWING MUST NOT BE SCALED.
THE GENERAL CONTRACTOR SHALL VERIFY ALL DIMENSIONS, DATUMS AND LEVELS PRIOR TO COMMENCEMENT OF WORK AND IS HELD RESPONSIBLE FOR REPORTING ANY DISCREPANCY OR OMISSION TO CAN-TEC SERVICES LTD. IMMEDIATELY.
THIS DRAWING IS THE EXCLUSIVE PROPERTY OF CAN-TEC SERVICES LTD. AND CAN BE REPRODUCED ONLY WITH THE PERMISSION OF CAN-TEC SERVICES LTD. IN WHICH CASE THE REPRODUCTION MUST BEAR THEIR NAME AS THE ENGINEERING/DRAFTING FIRM.
http://www.can-tec-services.ca/



1688 MAIN STREET, WINNIPEG, MANITOBA TEL: (204) 943-7222 Fax: (204) 947-5717

PROJECT TITLE: **INTERIOR AND EXTERIOR RENOVATIONS V120**
SHEET TITLE: **ELECTRICAL PLAN**
DATE (YY MM DD): 18 03 25
SCALE: AS NOTED
CHECKED BY: RS
DRAWN BY: RQS
LOCATION: KUGAARUK, NUNAVUT

CONSTRUCTION
E1.0
REVISION #: 01
JOB NO. 17-058-01-30

01	ISSUED FOR CONSTRUCTION	18 03 22	RS
REV. #	REVISION	DATE (YY MM DD)	REV. BY