

REVISION HISTORY						
ZONE	REV	DESCRIPTION	DATE	DWN. DESS.	CKD. VER.	APPV. APP.

PROJECT : MARTHA BLACK HVAC
PROJECT No. : 4316-3
CUSTOMER : CCGS
TITLE: FIELD CONNECTIONS DRAWING
DRAWING No.: 4316-320-XXXXXXXX

RATED VOLTAGE	VOLT	PHASE	Hz
MAIN VOLTAGE	600	L1, L2, L3	60
PANEL AUXILIARY VOLTAGE #1	120	L, N	60

TABLE OF CONTENTS	
MANUFACTURING INFORMATION	p. 2-14
GENERAL ARRANGEMENT (EXTERNAL VIEWS)	p. 3 & 7
BACK PLATE LAYOUT	p. 4 & 8
BACK PLATE DRILL PATTERN	p. 5 & 9
JUNCTION BOX DETAILS	p. 6
BILL OF MATERIALS	p. 10-11
WIRING LIST	p. 12-13
CABLE LIST	p. 14
WIRING DIAGRAMS	p. 20-27
ELECTRICAL SCHEMATICS	p. 40-80
3 PHASE POWER DISTRIBUTION	p. 41-42
120 VAC POWER DISTRIBUTION	p. 45
120 VAC HARDWIRED LOGIC	p. 46-48
ALARM STATUS DRY CONTACTS	p. 49-50

WIRE COLOR CODE

POWER CIRCUITS	
600 VAC (all phases)	BLACK
120 VAC (L)	BLACK
120 VAC (L) Switched	RED
120 VAC (N)	WHITE
CONTROL CIRCUITS	
120 VAC (L)	BLACK
120 VAC (N)	WHITE
DRY CONTACT	RED
GROUNDING	
GROUNDING	GREEN

WIRE SIZE

600 VAC	min 14 AWG
120 VAC	14 AWG

DRAFT - CHECK BY
ENGINEERING
PENDING

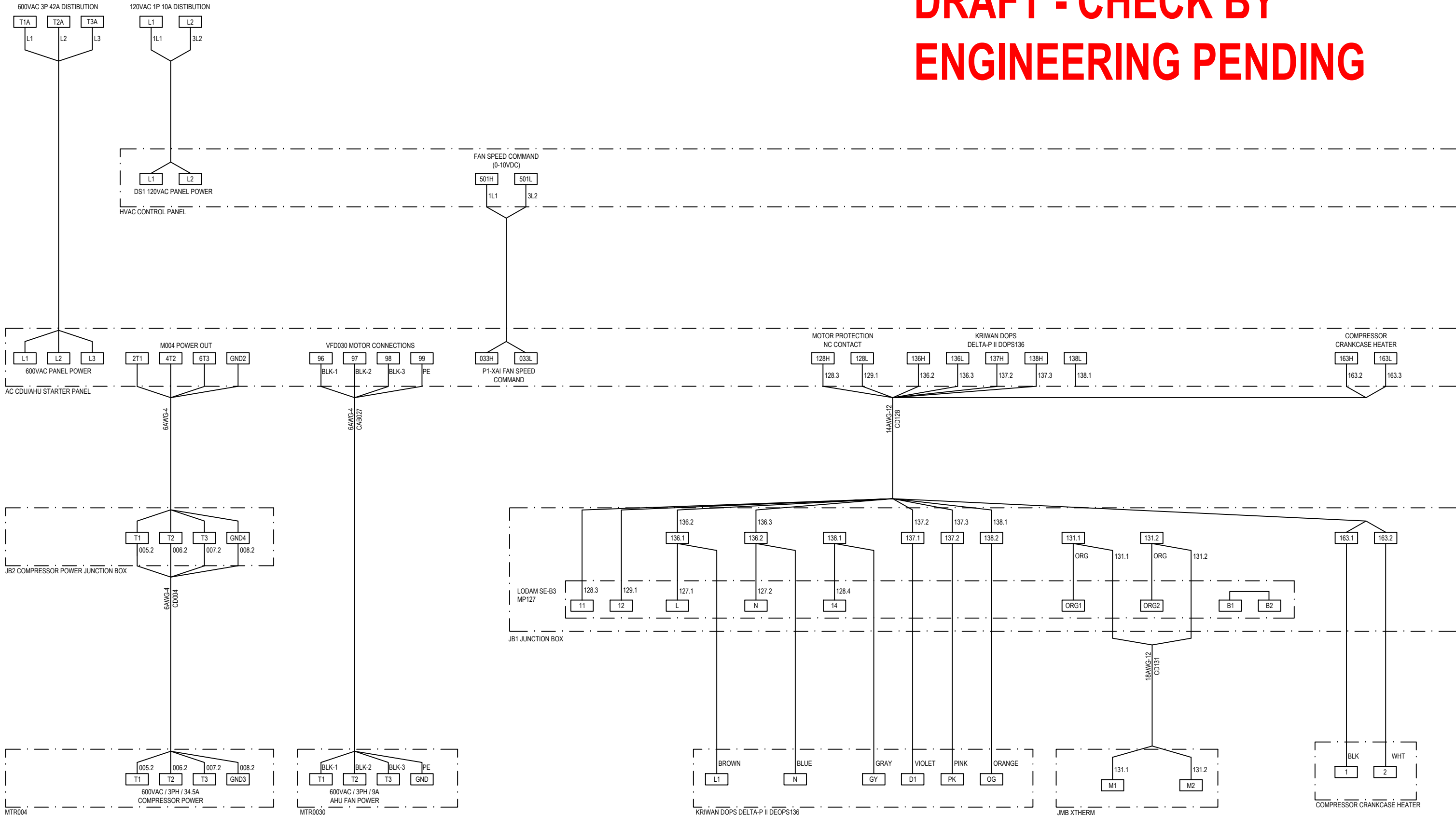
CONFIDENTIAL
All information contained in this document is the property of Bronswerk Marine Inc. and is strictly confidential. This document shall not be copied, reproduced, passed on or brought to the notice of third parties without Bronswerk Marine Inc's written permission.



4050 PLACE DE JAVA
BROSSARD, QUEBEC, CANADA J4Y 0C4
TEL.: (450) 659-6571
FAX.: (450) 659-1035

CUSTOMER/CLIENT CCGS			PROJECT/PROJET MARTHA BLACK		
DWN/DESS	FG. CUIILLERIER	TITLE/TITRE AC CDU/AHU STARTER PANEL	DWG. No./No. DESS. 4316-S320-102		
CKD/VER	E. GAGNON				
APPVL/APP	A. SAN CRISTOBAL				
QA / AQ	-	DATE (Y/M/D) 2018/06/26			REV.: -
FILENAME / FICHIER 4316-320-XYZ.DWG		PREV PAGE -	PAGE 1	NEXT PAGE 2	TOTAL PAGES 5

DRAFT - CHECK BY
ENGINEERING PENDING



LOCAL NOTES:

1. WIRE SIZE ARE GIVEN AS INDICATION ONLY. ELECTRICAL CONTRACTOR TO SELECT WIRE SIZE ACCORDING TO EQUIPMENT LOAD.

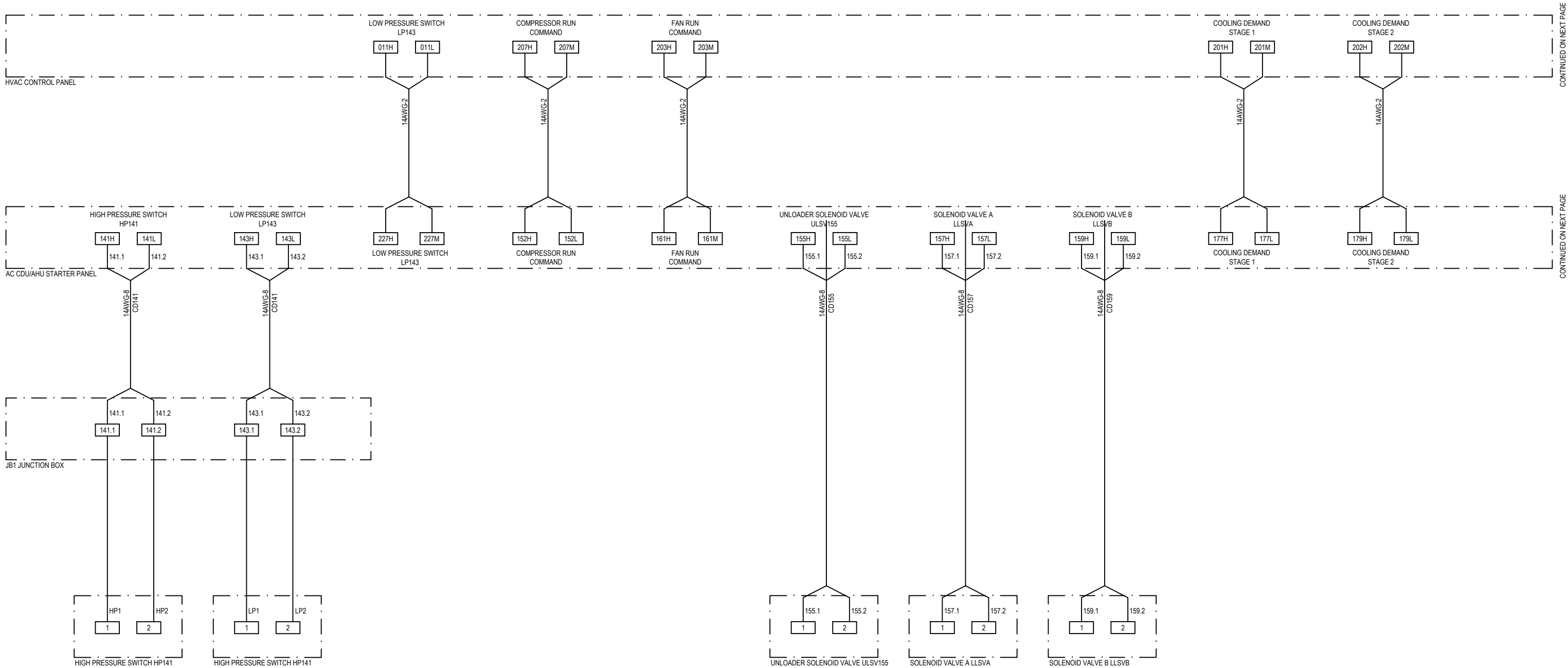
CONFIDENTIAL
All information contained in this document is the property of Bronswerk Marine Inc. and is strictly confidential. This document shall not be copied, reproduced, passed on or brought to the notice of third parties without Bronswerk Marine Inc's written permission.



4050 PLACE DE JAVA
BROSSARD, QUEBEC, CANADA J4Y 0C4
TEL.: (450) 659-6571
FAX.: (450) 659-1035

CUSTOMER/CLIENT CCGS			PROJECT/PROJET MARTHA BLACK			
DWN/DESS	FG. CUILLERIER		TITLE/TITRE AC CDU/AHU STARTER PANEL			
CKD/VER	E. GAGNON					
APPVL/APP	A. SAN CRISTOBAL					
QA / AQ	-		DWG. No./No. DESS.			REV.: -
DATE (Y/M/D) 2018/06/26			4316-S320-102			FMT: B
FILENAME / FICHIER 4316-320-XYZ.DWG			PREV PAGE 1	PAGE 2	NEXT PAGE 3	TOTAL PAGES 5

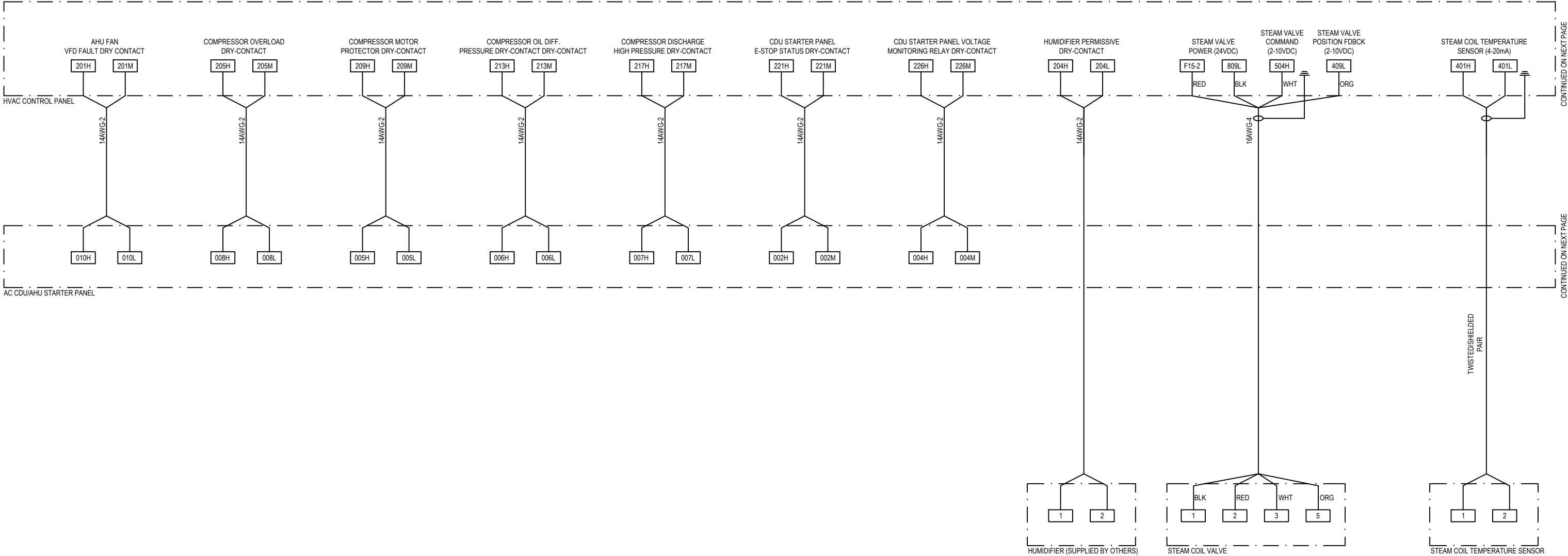
DRAFT - CHECK BY
ENGINEERING PENDING



LOCAL NOTES:

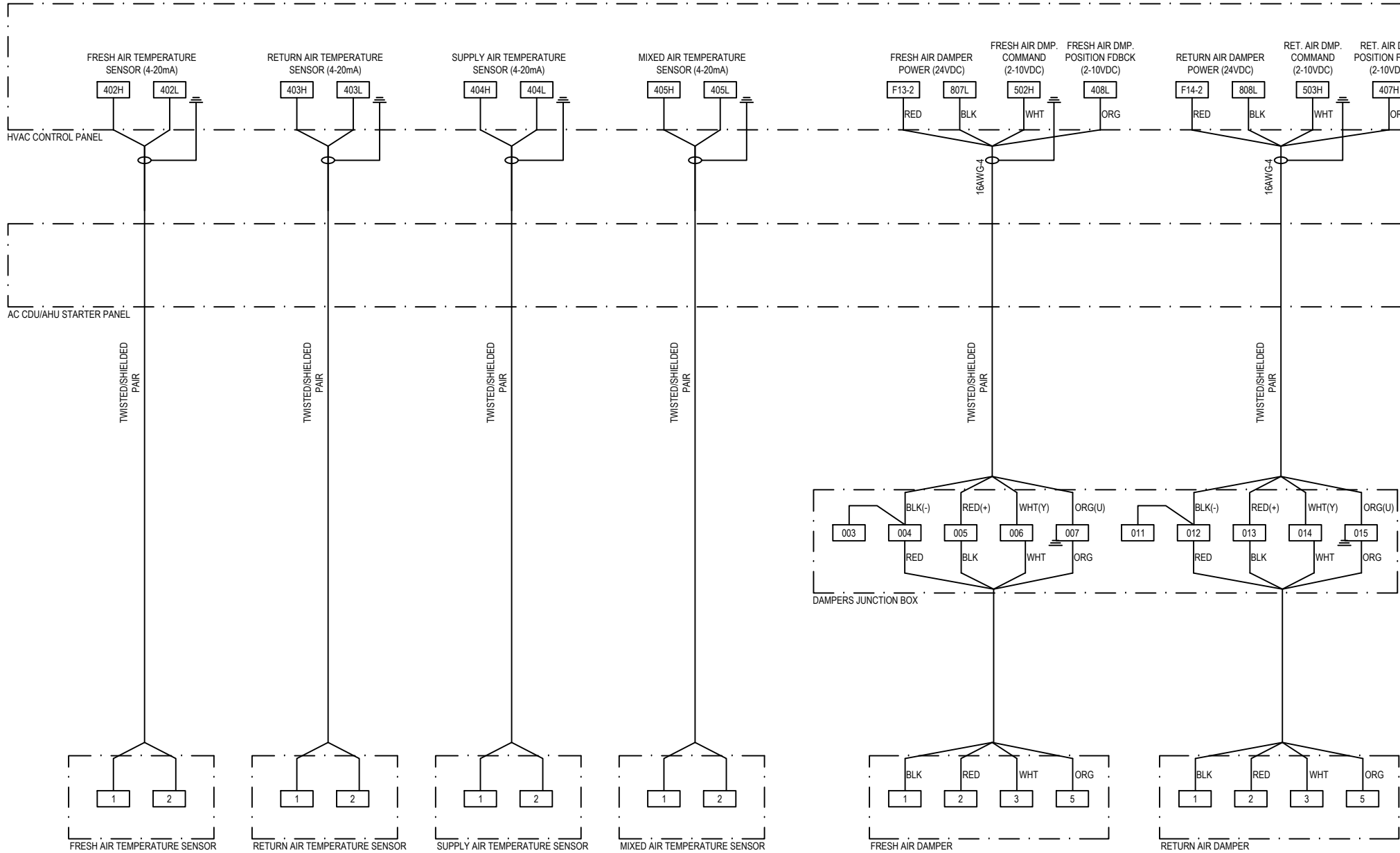
1. WIRE SIZE ARE GIVEN AS INDICATION ONLY. ELECTRICAL CONTRACTOR TO SELECT WIRE SIZE ACCORDING TO EQUIPMENT LOAD.

DRAFT - CHECK BY
ENGINEERING PENDING



LOCAL NOTES:

1. WIRE SIZE ARE GIVEN AS INDICATION ONLY. ELECTRICAL CONTRACTOR TO SELECT WIRE SIZE ACCORDING TO EQUIPMENT LOAD.



LOCAL NOTES:

1. WIRE SIZE ARE GIVEN AS INDICATION ONLY. ELECTRICAL CONTRACTOR TO SELECT WIRE SIZE ACCORDING TO EQUIPMENT LOAD.

CONFIDENTIAL
All information contained in this document is the property of Bronswerk Marine Inc. and is strictly confidential. This document shall not be copied, reproduced, passed on or brought to the notice of third parties without Bronswerk Marine Inc's written permission.



4050 PLACE DE JAVA
BROSSARD, QUEBEC, CANADA J4Y 0C4
TEL.: (450) 659-6571
FAX.: (450) 659-1035

CUSTOMER/CLIENT CCGS		PROJECT/PROJET MARTHA BLACK	
DWN/DESS	FG. CUILLERIER	TITLE/TITRE AC CDU/AHU STARTER PANEL	
CKD/VER	E. GAGNON		
APPVL/APP	A. SAN CRISTOBAL		
QA / AQ	-	DWG. No. DESS 4316-S320-102	
DATE (Y/M/D)	2018/06/26	REV.: -	FMT: B
FILENAME / FICHIER	4316-320-XYZ.DWG	PREV PAGE 4	TOTAL PAGES 5
PAGE 5	NEXT PAGE -		