

CABIN COMFORT AND ENVIRONMENTAL RESEARCH RAISED PLATFORM DESIGN NRC , OTTAWA



GENERAL NOTES

- CONTRACTORS TO CHECK AND VERIFY ALL DIMENSIONS ON SITE PRIOR TO DEMOLITION OR CONSTRUCTION AND REPORT ANY ERRORS OR OMISSIONS TO DEPARTMENTAL REPRESENTATIVE.
- CONTRACTORS MUST VISIT THE SITE & FULLY FAMILIARIZE THEMSELVES WITH THE SCOPE OF THE WORK.
- PREVENT THE SPREAD OF DUST & DEBRIS BEYOND THE WORK AREA AND CLEAN ALL SURFACES AT COMPLETION.
- MAKE GOOD ALL SURFACES AFFECTED BY THIS WORK.
- COORDINATE ALL SHUTDOWNS WITH THE DEPARTMENTAL REPRESENTATIVE.
- PROVIDE ALL LABOUR AND MATERIAL REQUIRED TO FORM A COMPLETE, FUNCTIONAL SYSTEM AS DESCRIBED ON DRAWINGS.



No.	Date	Revision	By:
5	06 28 2018	ISSUED FOR TENDER	KWC
4	04 25 2018	ISSUED FOR COMPLIANCE REVIEW	KWC
3	04 24 2018	ISSUED FOR 100% CLIENT REVIEW	KWC
2	04 03 2018	ISSUED FOR 95% CLIENT REVIEW	KWC
1	01 23 2018	ISSUED FOR 50% CLIENT REVIEW	KWC
No.	Date	Revision	By: Parr

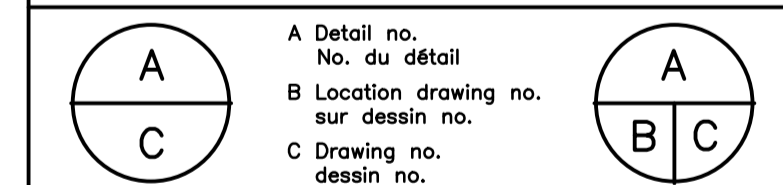
Date Printed Date imprimée

383 Parkdale Avenue, Suite 201
Ottawa Ontario Canada K1Y 4R4

KWC ARCHITECTS INC.

PHONE (613) 238-2117
FAX (613) 238-6595
E MAIL kwc@kwc-arch.com

- Verify all dimensions and site conditions and be responsible for same
- Vérifier toutes les dimensions et l'état des lieux et en assumer la responsabilité



project project

U-72 CABIN COMFORT AND ENVIRONMENTAL RESEARCH

OTTAWA, ON

drawing dessin

COVER SHEET

designed	CD/MM	conçu		date	MARCH 2018	date	
drawn	CD	dessiné		scale	AS NOTED	échelle	
checked	MM	vérifié		sheet	1 of/de	feuille	4
approved	MM	approuvé		W.O.no.	XX	D.T.no.	

dwg.no. 5577 - A000 dessin no.

DRAWING LIST

5127-A000 COVER SHEET

ARCHITECTURAL

A1012929-01 - A100 COVER
A1012929-01 - A100 RAISED PLATFORM - PLANS AND SECTION & ELEVATIONS
A1012929-01 - A101 RAISED PLATFORM - SECTIONS AND STAIR DETAILS
A1012929-01 - A102 RAISED PLATFORM - RAMP DETAILS

STRUCTURAL

LEA18021-S01 RAISED PLATFORM - PLAN AND DETAILS
LEA18021-S02 RAISED PLATFORM - PLAN AND DETAILS

MECHANICAL (M/A)

N/A

ELECTRICAL (E/A)

N/A

LEGEND

APPLICABLE TO ALL ARCHITECTURAL DRAWINGS :

- xx → DRAWING NOTE
- X/XXX ELEVATION REFERENCE
- A X B C INTERIOR ELEVATION REFERENCE
- ELEVATION LETTER
- DETAIL NUMBER
- X/XXX SECTION DETAIL REFERENCE
- DRAWING NUMBER
- X/XXX DETAIL REFERENCE
- DOOR TAG
- W-X WALL TYPE
- CEILING TYPE
- CEILING TAG
- CEILING HEIGHT IN mm, AFF
- ELEVATION HEIGHT
- ELEVATION DATUM (IN PLAN)
- 1 HR FIRE RATED WALL ASSEMBLY, 3/4 HR FIRE RATED DOOR ASSEMBLY
- NEW DOOR
- FLOOR FINISH TRANSITION

ABBREVIATIONS

&	AND
C	CENTRE LINE
Ø	DIAMETRE
±	PLUS OR MINUS
NO.	NUMBER
NTS	NOT TO SCALE
OBC	ONTARIO BUILDING CODE
OC	ON CENTRE
PCF	POWDER COAT FINISH
PS	PRESSED STEEL
PREFAB	PREFABRICATED
PREFIN	PREFINISHED
PT	PAINT
R	RISERS
REV	REVERSE
RM.	ROOM
RWB	RESILIENT WALL BASE
SIM	SIMILAR
TH	THRESHOLD
T/O	TOP OF
TYP	TYPICAL
ULC	UNDERWRITER'S LABORATORIES OF CANADA
U/S	UNDERSIDE
W/	WITH
F1	RAISED PLATFORM FLOOR ASSEMBLY. REFER ALSO TO STRUCTURAL DRAWINGS
	-38 MM GALVANIZED METAL DECK. REFER TO STRUCTURAL.
	-19MM BIRCH PLYWOOD.
	-2MM SLIP RETARDANT SHEET VINYL SAFETY FLOORING
	PROVIDE S.P.F. WOOD BLOCKING AT ALL REQUIRED PLYWOOD SEAMS WHERE FASTENERS DO NOT ALIGN WITH TOPS OF METAL FLUTES.
	ADHERE SHEET VINYL TO PLYWOOD AS PER MANUFACTURERS INSTRUCTIONS. REFER TO SPECIFICATIONS.
W1	HALF WALL ASSEMBLY
	-13 GYPSUM W.B. WITH PAINT FINISH
	-92MM METAL STUDS @ 400MM MAX O.C.
	CONTINUOUS BONDING SEALANT BOTTOM TRACK AT ANY AREA OF WALL IN CONTACT WITH CONCRETE SLAB. ***DO NOT USE MECHANICAL FASTENERS INTO CONCRETE. SLAB CONTAINS RADIANT PIPING.***
	PROVIDE DEFLECTION TOP TRACK
	ACOUSTICALLY SEAL CONTINUOUSLY WALL PERIMETER AND AT ALL WALL OPENINGS AND PENETRATIONS.

SPECIFICATIONS

1. GENERAL REQUIREMENTS

- REFER TO NRC BOOK SPECIFICATIONS

2. SITE CONSTRUCTION

- LEGALLY DISPOSE OFF-SITE ALL DEMOLISHED MATERIAL & NEW WASTE ITEMS REQUIRING REMOVAL, EXCAVATION, ETC.
- PROTECT ALL EXISTING STRUCTURES BUILDING ELEMENTS AND UTILITIES.
- REPLACE AND/OR REPAIR ANY DAMAGE TO PUBLIC OR PRIVATE PROPERTY CAUSED BY THIS CONTRACT AT NO EXPENSE TO THE OWNER.
- PROVIDE HOARDINGS, BRACING, SHORING, COVERS, ETC. AS REQUIRED.
- CO-ORDINATE AND CARRY OUT ALL NEW STRUCTURAL AND ARCHITECTURAL DRAWINGS AND DOCUMENTS AND ANY OTHER DOCUMENTS INCLUDED IN CONTRACT BY NRC.
- DO NOT COVER-UP ANY WORK UNTIL PROPERLY INSPECTED BY THE PERTINENT CONSULTANT AND/OR AUTHORITY.

5. METALS

- SEE APPLICABLE STRUCTURAL ENGINEERING DRAWINGS AND DETAILS, AND SPECIFICATIONS BY VARIOUS MANUFACTURES.
- SUPPLY AND INSTALL ALL MISCELLANEOUS METALS AS SHOWN ON THE DRAWINGS. SHOP PRIME AND TOUCH UP WELDS IN THE FIELD.
- PROVIDE SHOP DRAWINGS OF ALL ITEMS FOR THE ARCHITECT'S REVIEW.
- INTERIOR PARTITIONING - REFER TO ASSEMBLIES ON DRAWINGS
 - PROVIDE PRODUCT DATA SHEETS OF ALL LIGHT GAUGE METAL FRAMING ITEMS FOR THE ARCHITECT'S REVIEW.
 - THE INSTALLER SHALL BE RESPONSIBLE FOR THE DESIGN OF ALL INTERIOR STEEL STUD FRAMING INCLUDING GALVANIZING, GAUGES, BEARING CAPACITIES, SPANS, SPACING, TRACKS & ACCESSORIES, LOADS, DEFLECTION, ETC., INCLUDING PROVIDING ANY MISCELLANEOUS STEEL FRAMING.
- MISCELLANEOUS STEEL RAMP, STAIRS & GUARDRAILS. THE INSTALLER SHALL BE RESPONSIBLE FOR THE STRUCTURAL DESIGN OF ALL STEEL STAIRS & GUARDRAILS. THE INSTALLER SHALL PROVIDE:
 - DESIGN DRAWINGS SIGNED AND SEALED BY AN ONTARIO STRUCTURAL ENGINEER, AND AS REQUIRED BY THE NATIONAL BUILDING CODE, 2015, AND
 - INSPECTIONS DURING CONSTRUCTION AND FINAL WRITTEN CERTIFICATION SIGNED AND SEALED BY THE ENGINEER THAT THE INSTALLATION HAS BEEN COMPLETED IN ACCORDANCE WITH THE APPROVED DESIGN DRAWINGS.
- SHOP DRAWINGS TO INDICATE INDICATE CONSTRUCTION DETAILS, SIZES OF STEEL SECTIONS AND THICKNESS OF STEEL SHEET AND FASTENER SIZES & TYPES.

6. FASTENERS TO BE TYPICALLY

- BASE PLATE WELDED TO BASE SLEEVE AT ALL RAMP AND STAIR RAILING SUPPORTS TYPICAL** - 12MM S.S. BOLTS W/ S.S. NUT AND WASHER OR WELD BASE PLATE TO STRINGER/SUPPORT STEEL. FABRICATION ENG. TO FINALIZE CONNECTION.
- HANDRAIL BRACKETS TYPICAL** - (MOUNTING PLATES TO SUPPORT POST AND MOUNTING SADDLES TO HANDRAIL. #10 MIN. 16MM S.S. SELF TAPPING COUNTER SUNKEN FLAT HEAD SCREWS.
- HANDRAIL SPLICES TYPICAL** - #10 10MM S.S. SOCKET CAP SETTING SCREW AT UNDER SIDE OF SPLICE JOINT.
- GUARD RAILS AND BALUSTER PANEL FASTENERS & SUPPORT POST BASE FASTENER FOR STAIRS AND RAMPS TYPICAL** - 12MM S.S. COUNTER SUNK PANCAKE HEAD THRU BOLTS. STEEL TO BE PREDRILLED IN SHOP OR ON SITE PRIOR TO FASTENING.
- PLYWOOD: STAINLESS STEEL (S.S.) FLUSH MOUNTED FLAT HEAD SCREW WITH WOOD REAMER, FIELD SPACING - 400MM MAX SEAM/EDGE SPACING- 300MM MAX. CONFIRM WITH MANUFACTURES RECOMMENDATION / INSTRUCTIONS.**
- ALUMINUM THRESHOLDS AND AND NOSING TYPICAL** - #10 MIN. S.S. SELF TAPPING COUNTER SUNKEN FLAT HEAD SCREWS. USE APPROPRIATE SCREW DEPTH AND EMBEDMENT AT EACH CONDITION.
- FABRICATION ENG. TO FINALIZE SPACING AND BOLT/WELD ANCHOR TYPES AND SIZES AND EMBEDMENT DEPTHS.

6. WOOD AND PLASTICS

- SUPPLY & INSTALL ROUGH AND FINISHED CARPENTRY AS REQUIRED FOR A COMPLETE PROJECT, INCLUDING ALL FRAMING, PLYWOOD, SHEATHING, FENCING & EXTERIOR WORK, SETTING OF ROUGH BUCKS, CANTS, CURBS, SLEEPERS, VAPOUR BARRIER, HATCHWAYS, STRAPPING, FURRING, METER EQUIPMENT BOARDS, DOORS AND TRIM, HARDWARE, FLASHING, INSULATION, SUB-FLOORING, CABINETRY & MILLWORK, ETC. INSTALL NAILS, SCREWS, BOLTS AND SUNDRY ANCHORS AS REQUIRED FOR SOUND CONSTRUCTION. USE APPROVED NON-CORROSIVE FASTENERS WHEREVER THERE IS THE POSSIBILITY OF STAINING OR CORROSION. EXAMINE THE DRAWINGS TO DETERMINE THE TOTAL SCOPE OF THIS WORK. AND PROVIDE SHOP DRAWINGS FOR THE ARCHITECT'S REVIEW.
 - PLYWOOD SUB-FLOOR: TO BE FSC, CERTIFIED RUSSIAN/BALTIC BIRCH, GRADE NA-BB. THICKNESS 19MM. TONGUE & GROOVE EDGES, JOINED TO 2MM GAP MAX. FASTENERS TO BE MIN NO. 10 ZINC PLATED, FLAT HEAD COUNTER SUNKEN (TEK) SCREW W/ SELF TAPPING THREAD, SELF-DRILLING POINT (REAMER) SELECT SCREW DEPTHS FOR FULL PENETRATION THRU GALVANIZED STRUCTURAL METAL DECK. SCREW SPACING 150MM O.C. MAX AT EDGES AND INTERMEDIATE JOINTS AND 300MM MAX FIELD SPACING. REFER TO MANUFACTURES RECOMMENDATIONS COORDINATE WITH STRUCTURAL DRAWINGS.
 - PROVIDE ADDITIONAL WOOD BLOCKING WITHIN DECK FLUTES WHERE PLYWOOD PANEL EDGES OR FASTENING LOCATIONS DON'T ALIGN WITH TOP SIDE OF DECKING PROFILE. COORDINATE WITH STRUCTURAL.
 - ALL BUILT-IN WOOD BLOCKING ETC. TO BE BUILT OF S.P.F. DRY NO. 1 OR BETTER LUMBER OR PLYWOOD.
 - REFER TO MANUFACTURES RECOMMENDATIONS FOR EACH PRODUCT.

4. CAULKING AND SEALING

- CAULK AND SEAL TO ENSURE A COMPLETE SEAL AT THRESHOLDS, ETC., AND BETWEEN DIFFERENT INTERIOR MATERIALS. PACK SPACES DEEPER THAN 13mm (1/2") AND WIDER THAN 6mm (1/4") WITH CLOSED-CELL POLYETHYLENE ROD FILLER.
- PRODUCTS:
 - MOISTURE RESISTANT SEALANT: FUNGUS AND MILDEW RESISTANT SILICONE CAULK. TREMSIL 600' BY TREMCO. OR DOW CORNING 786.
 - INTERIOR SEALANTS EQUAL TO 'ACRYLIC LATEX CAULK' BY TREMCO CANADA LTD.
 - ACOUSTIC CAULKING EQUAL TO 'ACOUSTICAL SEALANT' BY TREMCO CANADA LTD.
 - BEDDING MATERIAL: 'ETHAFOAM' CLOSED-CELL POLYETHYLENE ROPE, SIZED TO ALLOW 25% (MIN) COMPRESSION WHEN INSERTED IN JOINT.
 - PRIMERS: AS RECOMMENDED BY THE SEALING MANUFACTURERS.
 - COLOURS: TO MATCH ADJACENT MATERIALS AND TO ARCHITECTS APPROVAL.
 - PROVIDE PRODUCT DATA SUBMITTAL AND COLOUR SELECTION CHART FOR ARCHITECT'S APPROVAL.

9. FINISHES

INTERIOR PARTITIONING, PAINTING ETC.

- THE INSTALLER SHALL BE RESPONSIBLE FOR THE DESIGN OF ALL INTERIOR STEEL STUD FRAMING INCLUDING GALVANIZING, GAUGES, BEARING CAPACITIES, SPANS, SPACING, TRACKS & ACCESSORIES, LOADS, DEFLECTION, ETC., INCLUDING PROVIDING ANY MISCELLANEOUS STEEL FRAMING. THE INSTALLER SHALL ALSO PROVIDE:
 - INTERIOR PARTITIONING METAL STUD SYSTEMS - PROVIDE ALL GWB, SHEATHING, ETC. AS REQ'D FOR A COMPLETE JOB. BUILT-IN WOOD BLOCKING SUPPORTS FOR ALL GUARD RAILS, HANDRAILS, . ETC.
 - GYPSUM W.B. TAPE AND FILL JOINTS IN GYPSUM WALL BOARD (GWB), WITH 3 COATS APPROVED JOINT COMPOUND. SAND IN ACCORDANCE WITH QUALITY CONTROL STANDARDS ESTABLISHED ON SITE WITH THE DEPARTMENTAL REPRESENTATIVE, FOR A LEVEL 4 FINISH.

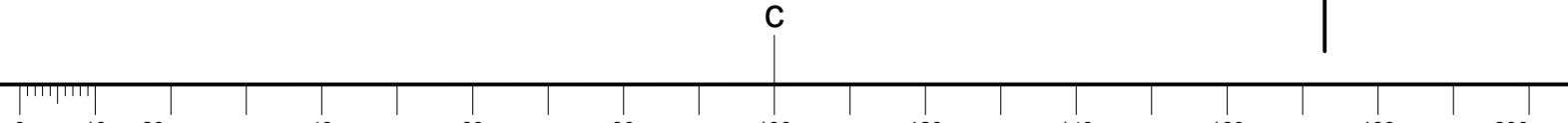
9. FINISHES cont.

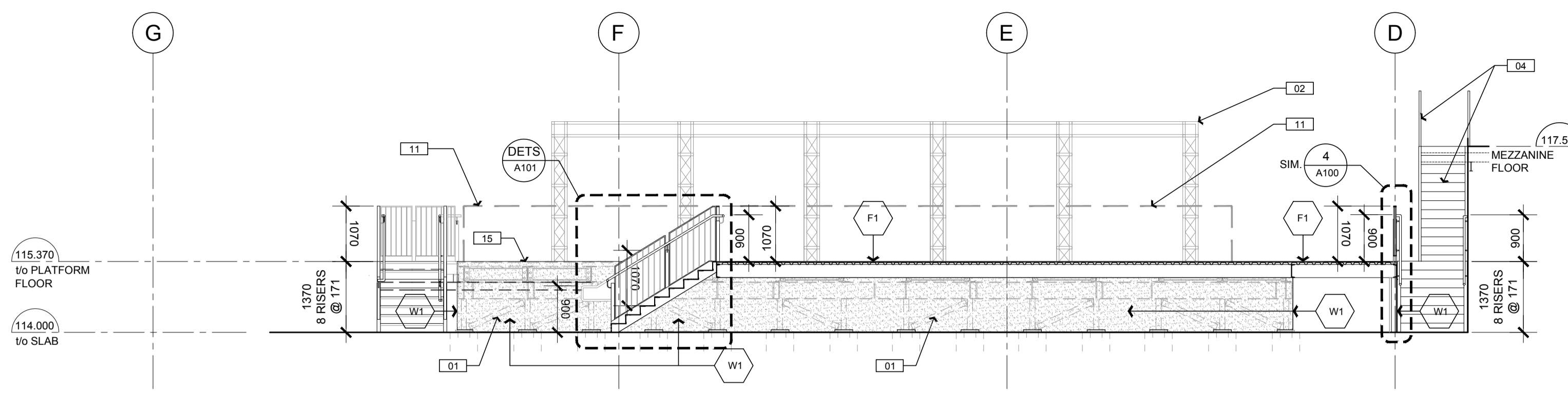
- GYPSUM W.B. TAPE AND FILL JOINTS IN GYPSUM WALL BOARD (GWB), WITH 3 COATS APPROVED JOINT COMPOUND. SAND IN ACCORDANCE WITH QUALITY CONTROL STANDARDS ESTABLISHED ON SITE WITH THE DEPARTMENTAL REPRESENTATIVE, FOR A LEVEL 4 FINISH.
- PROVIDE UNDER LAYS, SUBSTRATES, ADHESIVES, GROUT, ETC., AS RECOMMENDED BY THE RESPECTIVE MANUFACTURERS.
- VINYL FLOORING TYPE 01 - ASTM F 1363 TYPE 2, GRADE 1 (RESILIENT) VINYL SHEET FLOORING 'SLIP RETARDANT SAFETY EXCLUSIVE TEXTURED, PARTICLE ENHANCED FLOORING. THICKNESS: 2.0MM, WIDTH: 2.0M(6'-7"). LENGTH: UP TO 20M (66 FT) ROLL. FULL SPREAD OR SPRAY ADHESIVE. HEAT WELDED JOINTS/SEAMS. COLOUR: SUBSTRATE PREPARATION AND ADHESIVE AS PER MANUFACTURERS INSTRUCTIONS. FROM SRF COLOUR RANGE: MOUNTAIN TOP 31507. WELD ROD LIGHT GRAY WS008.
- PLATFORM FLOORING & STAIR LANDINGS: USE VINYL SHEET FLOORING TYPE 01
- PLATFORM RAMP AND RAMP LANDINGS: ALSO USE VINYL SHEET FLOORING TYPE 01
- DIRECT GLUE-DOWN IN ACCORDANCE WITH PRODUCT SELECTION SHOWN ON THE DRAWINGS & MANUFACTURERS RECOMMENDATIONS/INSTRUCTIONS. SEE ALSO 'GENERAL' NOTES HEREIN.
- PROVIDE PLASTIC CAP/EDGE TRIMS AS REQUIRED AND APPROVED BY ARCHITECT.
- RESILIENT BASE - VINYL, TO ASTM F1981 TYPE TV, GROUP I (SOLID), 4 3/8" HIGH, JOHNSONITE TIGHTLOCK RESILIENT WALL BASE, IN CONTINUOUS LENGTHS OF MINIMUM 75 FT., COLOUR: 121 CEMENT (TO MATCH EXISTING)
 - WALL BASE: WATER-BASED, SOLVENT-FREE, ACRYLIC ADHESIVE. EQUIVALENT TO JOHNSONITE #960 WALL BASE ADHESIVE.
- PAINTING
 - ALL PAINTING: ONE PRIMER COAT AND TWO FINISH COATS, AND IN ACCORDANCE WITH THE MANUAL OF THE ONTARIO PAINTING CONTRACTORS ASSOCIATION AND MPI. PAINTING CONTRACTOR TO REPAIR MINOR IMPERFECTIONS IN FINISH PRIOR TO PRIMING, PRIOR TO INSTALLING FIRST FINISH COAT(S). RE-PRIME ANY PATCHES PRIOR TO CONTINUING.

- ACCEPTABLE PRODUCTS: SHERWIN WILLIAMS - GAUNTLET GRAY SW 7019 SEMI-GLOSS; FOR ALL STEEL HANDRAILS, GUARD RAILS, CHANNELS, ANGLES, BRACKETS MOUNTING PLATES AND CLIPS. TO MATCH EXISTING GRAY.
- SHERWIN WILLIAMS - FROSTY WHITE SW 6196 FLAT; FOR ALL OTHER NON METAL SURFACES.
- BRAND AS APPROVED BY THE DEPARTMENTAL REPRESENTATIVE. ALL OTHER PAINT FLAT.
- REMOVE ALL DIRT, GREASE, ETC. BEFORE PAINTING.
- PRIME AND PAINT EXPOSED STEEL LINTELS, & MISC. STEEL STAIRS, GUARDS, HANDRAILS, ETC. PAINT ALL GWB NOT COVERED WITH OTHER MATERIALS, FOR A COMPLETE JOB.
- USE PLASTIC FILLER AT IRREGULAR SURFACE LOCATIONS AS RECOMMENDED BY MANUFACTURER
- PROVIDE PATCHING, LEVELING AND SMOOTHING COMPOUNDS OVER PLYWOOD SUBSTRATE PRIOR TO ADHERING FLOOR AS RECOMMENDED BY MANUFACTURER.
- USE FULL WIDTH SHEETS OF VINYL WHERE EVER POSSIBLE. CUT EDGES OF FLOORING TO BE CUT STRAIGHT AND SQUARE WITHIN MANUFACTURES TOLERANCES.

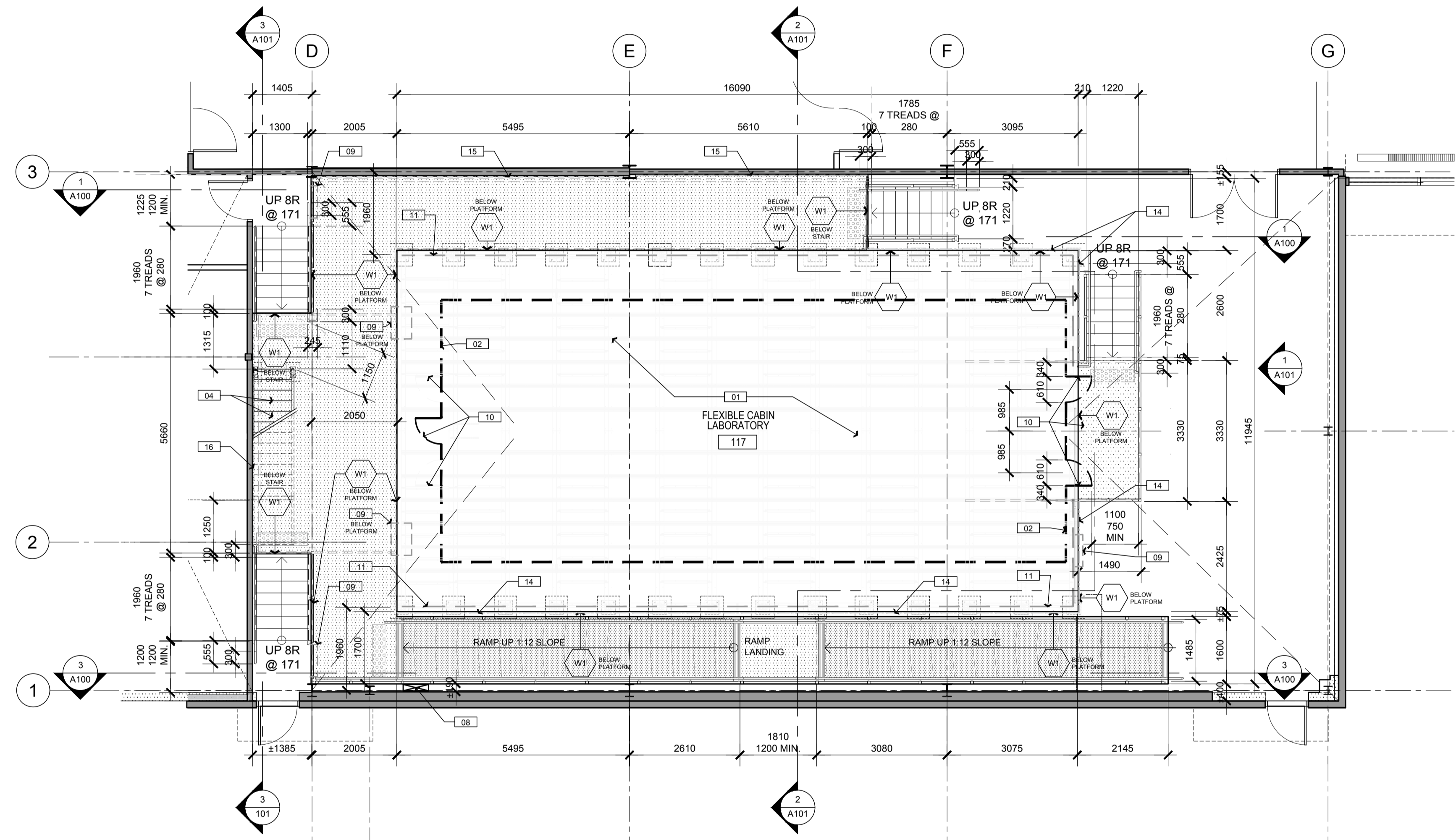
10. SPECIALTIES

- PROVIDE SHOP DRAWINGS OF ALL ITEMS NOTED HEREIN FOR ARCHITECT'S REVIEW.
- SUPPLY AND INSTALL THRESHOLDS AND NOSINGS, AS NOTED ON THE DRAWINGS.
- ACCEPTABLE PRODUCTS:
 - RAMP TRANSITION THRESHOLD - EXTRUDED ALUMINUM, 100MM WIDTH, 6.4MM HIGH, RIDGED (SLIP RESISTANT) SADDLE SURFACE WITH INTEGRATED ABRASIVE EPOXY PHOTO-LUMINESCENT SAFETY STRIPS. RAMP EDGE TO BE MIN 1525MM WIDE CUT TO SUIT RAMP WIDTH ON SITE.
 - RAMP NOSING EDGE - EXTRUDED ALUMINUM, 150MM WIDTH, 125MM PROFILE THICKNESS, 19MM DROP, RIDGED (SLIP RESISTANT) SADDLE SURFACE WITH INTEGRATED ABRASIVE EPOXY PHOTO-LUMINESCENT SAFETY STRIP. RAMP EDGE TO BE MIN 1525MM WIDE CUT TO SUIT RAMP WIDTH ON SITE.
 - STAIR NOSING - EXTRUDED ALUMINUM, 75X50MM WIDTH, 6.4MM HIGH, RIDGED (SLIP RESISTANT) SURFACE WITH INTEGRATED ABRASIVE EPOXY PHOTO-LUMINESCENT SAFETY STRIPS. STAIR NOSING TO BE MIN 1525MM WIDE CUT TO SUIT RAMP WIDTH ON SITE. ADHERE TO STEEL WITH ADHESIVE RECOMMENDED BY THE MANUFACTURES, AND COMPATIBLE WITH PLYWOOD SUBSTRATE. MECHANICALLY FASTEN AND RECOMMENDED SPACING AND COUNTER SUNKEN, FLAT HEAD #10 S.S. METAL, SELF TAPPING SCREWS.
 - TACTILE WARNING TILE - RESILIENT TILE, 300X300MM, 3MM THICK, WITH 4MM TRUNCATED DOME FIELD PATTERN. INSTALL STRAIGHT AND SQUARE TO ADJACENT FRONT EDGE OF STAIR. INSTALL 4 TILES WIDE FLUSH WITH ADJACENT FLOORING SURFACE. COLOUR 'SAFETY YELLOW'. ADHERE TO SUB-FLOORING WITH ADHESIVE RECOMMENDED BY THE MANUFACTURE AND COMPATIBLE WITH PLYWOOD SUBSTRATE.
 - REFER TO PLATFORM PLAN FOR ALL THRESHOLD, RAMP EDGE AND TACTILE WARNING TILE LOCATIONS.
 - USE ADHESIVES AND FASTENERS AS PER MANUFACTURERS INSTRUCTIONS. COORDINATE WITH EACH SUBSTRATE CONDITION.
 - ACCESS HATCHES - REMOVABLE ACCESS DOOR, SIZE: 760MM X 760MM., GAUGE 14, FINISH: PRIMED GREY BAKED ENAMEL, PAINTABLE. (PAINT TO MATCH ADJACENT WALL SURFACE) FLUSH STAINLESS STEEL CAM TYPE ACCESS LATCHES (4-SIDES)
 - PERIMETER TRIM ANGLE - 50X50MM X 3MM CLEAR ANODIZED ALUMINUM ANGLE. FASTENED WITH RECESSED, FLAT HEAD # 10, STAINLESS STEEL 19MM WOOD SCREWS @ 300MM MAX.O.C.

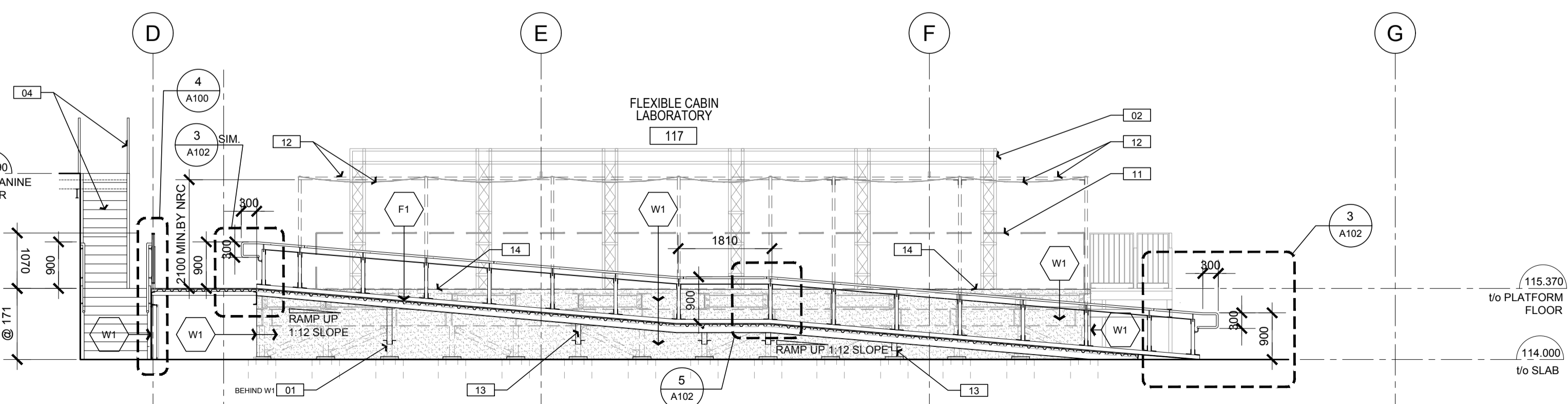




1
PARTIAL PLATFORM SECTION
SCALE 1:75



2
PARTIAL FLOOR PLAN
SCALE 1:75



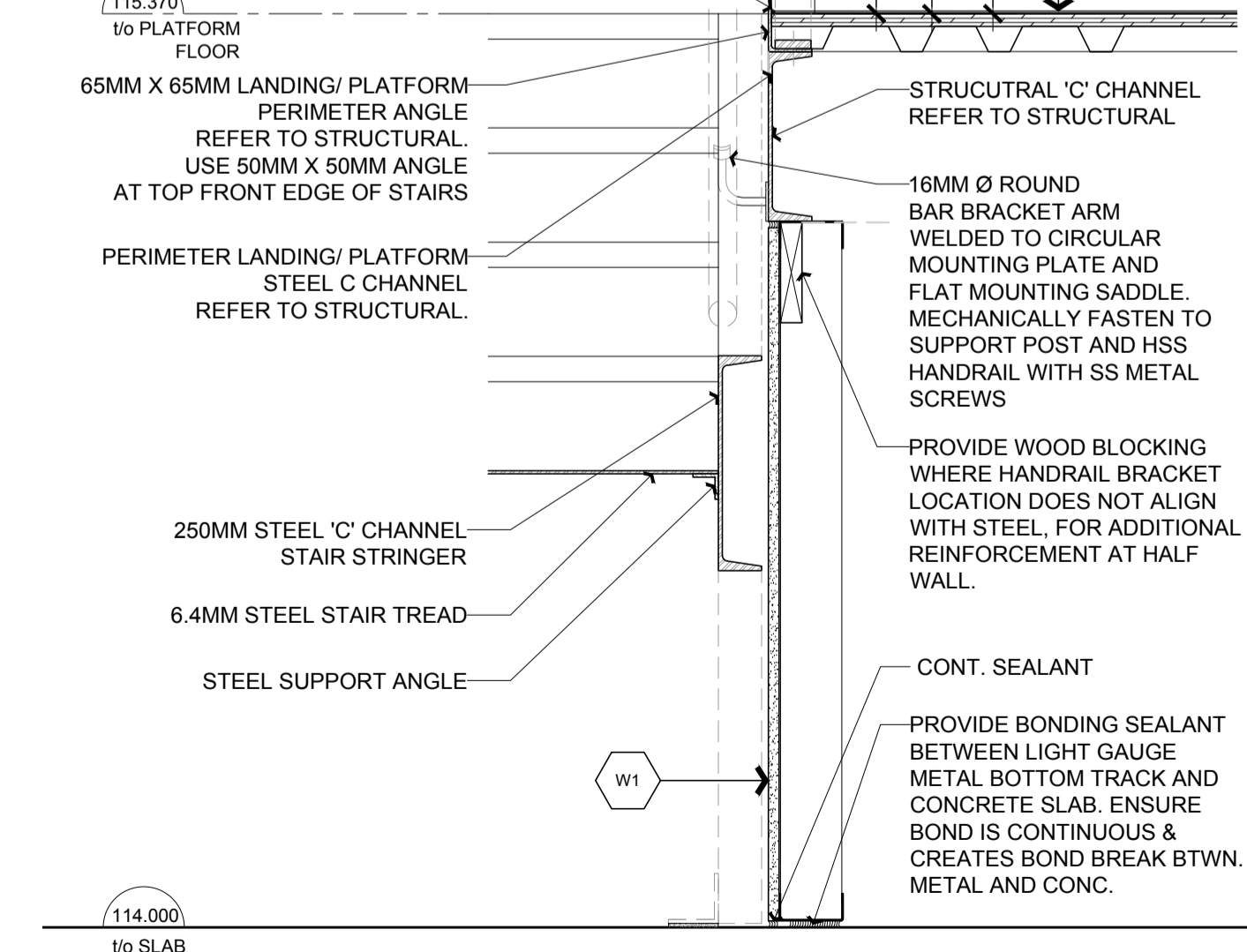
3
PARTIAL PLATFORM SECTION
SCALE 1:75

GENERAL LEGEND - SHEET AD.01 & AD.02
THIS LEGEND APPLIES TO DRAWING SHEET AD.01 ONLY.

- INDICATES PLATFORM FLOORING FINISH 01- SLIP RETARDANT SHEET VINYL FLOORING COLOUR: MOUNTAIN TOP WELD ROD: LIGHT GRAY WS008.
- INDICATES PLATFORM FLOORING FINISH 01- SLIP RETARDANT SHEET VINYL FLOORING - MOUNTAIN TOP COLOUR: MOUNTAIN TOP WELD ROD: LIGHT GRAY WS008.
- INDICATES NEW 610MM X 1220MM RESILIENT TACTILE WARNING STRIP AT THE TOP EDGES OF RAMP AND EACH STAIR. COLOUR: YELLOW. LOCATE 280MM (ONE FULL TREAD WIDTH BACK FROM FRONT EDGE OF STAIR/RAMP, CENTER AND PARALLEL WITH FRONT EDGE OF STAIR.
- INDICATES NEW EXTRUDED ALUMINUM RAMP THRESHOLD TRANSITION STRIP AND/OR RAMP NOSING EDGE LOCATION. REFER TO SPECIFICATIONS AND DETAILS.
- INDICATES EXISTING WALL ASSEMBLY

- W1 HALF WALL ASSEMBLY**
-13 GYPSUM W.B. WITH PAINT FINISH
-92MM METAL STUDS @ 400MM MAX O.C.
CONTINUOUS BONDING SEALANT BOTTOM TRACK AT ANY AREA OF WALL IN CONTACT WITH CONCRETE SLAB. ****DO NOT USE MECHANICAL FASTENERS INTO CONCRETE. SLAB CONTAINS RADIANT PIPING.****
PROVIDE DEFLECTION TOP TRACK
ACOUSTICALLY SEAL CONTINUOUSLY WALL PERIMETER AND AT ALL WALL OPENINGS AND PENETRATIONS.
- F1 RAISED PLATFORM FLOOR ASSEMBLY. REFER ALSO TO STRUCTURAL DRAWINGS**
-38 MM GALVANIZED METAL DECK. REFER TO STRUCTURAL.
-19MM BIRCH PLYWOOD
-2MM SLIP RETARDANT SHEET VINYL SAFETY FLOORING
PROVIDE S.P.F. WOOD BLOCKING AT ALL REQUIRED PLYWOOD SEAMS WHERE FASTENERS DO NOT ALIGN WITH TOPS OF METAL FLUTES.
ADHERE SHEET VINYL TO PLYWOOD AS PER MANUFACTURERS INSTRUCTIONS. REFER TO SPECIFICATIONS.

- 65MM X 65MM DEMOUNTABLE GUARD RAIL SUPPORT POSTS @ 1220MM MAX ENSURE ALL STAIR GUARD AND LANDING POSTS HAVE STEEL POST CAPS
- 38 MM HSS HANDRAIL SURFACE MOUNTED TO NEW GUARD POSTS AND HALF WALL. ALIGN BRACKETS FOR MIN. 50MM DIMENSION BETWEEN WALL/GUARD AND BACK OF HANDRAIL
- 19MM X 50MM BAR STEEL DE-MOUNTABLE GUARD RAIL FRAME MECHANICALLY FASTENED TO SUPPORT POSTS.
- 13MM X 100MM X 100MM MIN. STEEL BASE. PLATE WELDED TO 51X51X 100MM HSS BASE SLEEVE ANCHOR BOLTED OR WELDED TO STEEL ANGLE AND THROUGH BOLTED TO BASE OF HANDRAIL SUPPORT POST. FABRICATION ENG. TO FINALIZE SIZE AND ANCHORING OF BASE PLATE/BRACKET. PROVIDE ADDITIONAL BLOCKING UNDER PLYWOOD WHERE REQUIRED
- CONTINUOUS SEALANT APPLIED WITH STRAIGHT EDGE TAPE LINE FOR CLEAN FINISH AT LINOLEUM PERIMETER. COLOUR TO BE MATCHED WITH LINOLEUM



4
SECTION DETAIL - TYPICAL STAIR HANDRAIL/GUARD
SCALE 1:10

GENERAL NOTES
PRIOR TO COMMENCEMENT OF WORK, NOTIFY DEPARTMENTAL REPRESENTATIVE OF ANY DISCREPANCIES NOTED IN THE CONTRACT DOCUMENTS.
A. ALL GRID TO GRID DIMENSIONS ARE PLUS/MINUS. PRIOR TO COMMENCEMENT OF WORK, REVIEW SITE CONDITIONS AND VERIFY ALL DIMENSIONS. NOTIFY DEPARTMENTAL REPRESENTATIVE OF ANY DISCREPANCIES.
B. DO NOT SCALE DRAWINGS.
C. ALL DIMENSIONS ARE INDICATED IN MILLIMETERS UNLESS OTHERWISE SPECIFIED.

DRAWING NOTES - SHEET(S) A100, A101

- THESE NOTES APPLY TO DRAWING SHEET(S) A100, A101 ONLY.
- EXISTING FCL STRUCTURAL STEEL SUPPORT PLATFORM. BY NRC
 - EXISTING FCL SUPPORT APARATUS. BY NRC.
 - EXISTING FCL CABIN ENCLOSURE. BY NRC.
 - EXISTING SERVICE STAIR TO MEZZANINE.
 - EXISTING SURFACE MOUNTED ELECTRICAL RACEWAYS.
 - EXISTING DUCT ABOVE.
 - EXISTING RACEWAY ABOVE.
 - VERTICAL MECHANICAL RETURN DUCT TO BE ROUTED TO PLENUM BELOW PLATFORM. COORDINATE WITH NRC DEPARTMENTAL REP.
 - PAINTED METAL ACCESS HATCH INTO CONCEALED SPACE BELOW PLATFORM. BY NRC. REFER TO SPECIFICATIONS.
 - APPROXIMATE CABIN DOOR LOCATION BY NRC.
 - CONSTRUCTION SAFETY RAIL BY NRC.
 - FUTURE STEEL FRAMED FABRIC STRUCTURE BY NRC.
 - STRUCTURAL SUPPORT BRACKETS. REFER TO STRUCTURAL.
 - PROVIDE PRE-FINISHED OR CLEAR ANODIZED METAL TRIM ANGLE. REFER TO 1A102. LINE BELOW INDICATES LOCATION.
 - PROVIDE 100MM RESILIENT BASE ALONG BOTTOM OF EXISTING LIGHT GAUGE METAL GYPSUM WALLS. REFER TO 2A102. LINE BELOW INDICATES LOCATION.



GENERAL NOTES

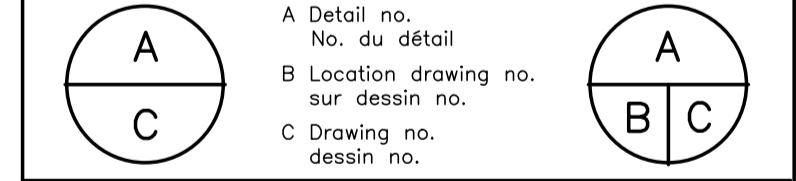
- CONTRACTORS TO CHECK AND VERIFY ALL DIMENSIONS ON SITE PRIOR TO DEMOLITION OR CONSTRUCTION AND REPORT ANY ERRORS OR OMISSIONS TO DEPARTMENTAL REPRESENTATIVE.
- CONTRACTORS MUST VISIT THE SITE & FULLY FAMILIARIZE THEMSELVES WITH THE SCOPE OF THE WORK.
- PREVENT THE SPREAD OF DUST & DEBRIS BEYOND THE WORK AREA AND CLEAN ALL SURFACES AT COMPLETION.
- MAKE GOOD ALL SURFACES AFFECTED BY THIS WORK.
- COORDINATE ALL SHUTDOWNS WITH THE DEPARTMENTAL REPRESENTATIVE.
- PROVIDE ALL LABOUR AND MATERIAL REQUIRED TO FORM A COMPLETE, FUNCTIONAL SYSTEM AS DESCRIBED ON DRAWINGS.



No.	Date	Revision	By	For
5	06 28 2018	ISSUED FOR TENDER		KWC
4	04 25 2018	ISSUED FOR COMPLIANCE REVIEW		KWC
3	04 24 2018	ISSUED FOR 100% CLIENT REVIEW		KWC
2	04 03 2018	ISSUED FOR 99% CLIENT REVIEW		KWC
1	01 23 2018	ISSUED FOR 50% CLIENT REVIEW		KWC

kwc
383 Parkdale Avenue, Suite 201
Ottawa Ontario Canada K1Y 4R4
KWC ARCHITECTS INC.
PHONE (613) 238-2117
FAX (613) 238-6595
E MAIL kwc@kwc-arch.com

- Verify all dimensions and site conditions and be responsible for same
- Vérifier toutes les dimensions et l'état des lieux et en assumer la responsabilité



project
U-72 CABIN COMFORT AND ENVIRONMENTAL RESEARCH
OTTAWA, ON
drawing
RAISED PLATFORM PLAN + SECTIONS

designed	conçu	date	date
CD		Feb. 2018	
drawn	dessiné	scale	échelle
CD		AS SHOWN	
checked	vérifié	sheet	feuille
MM		2 of/ de 4	
approved	approuvé	W.O.no.	D.T.no.
MM			

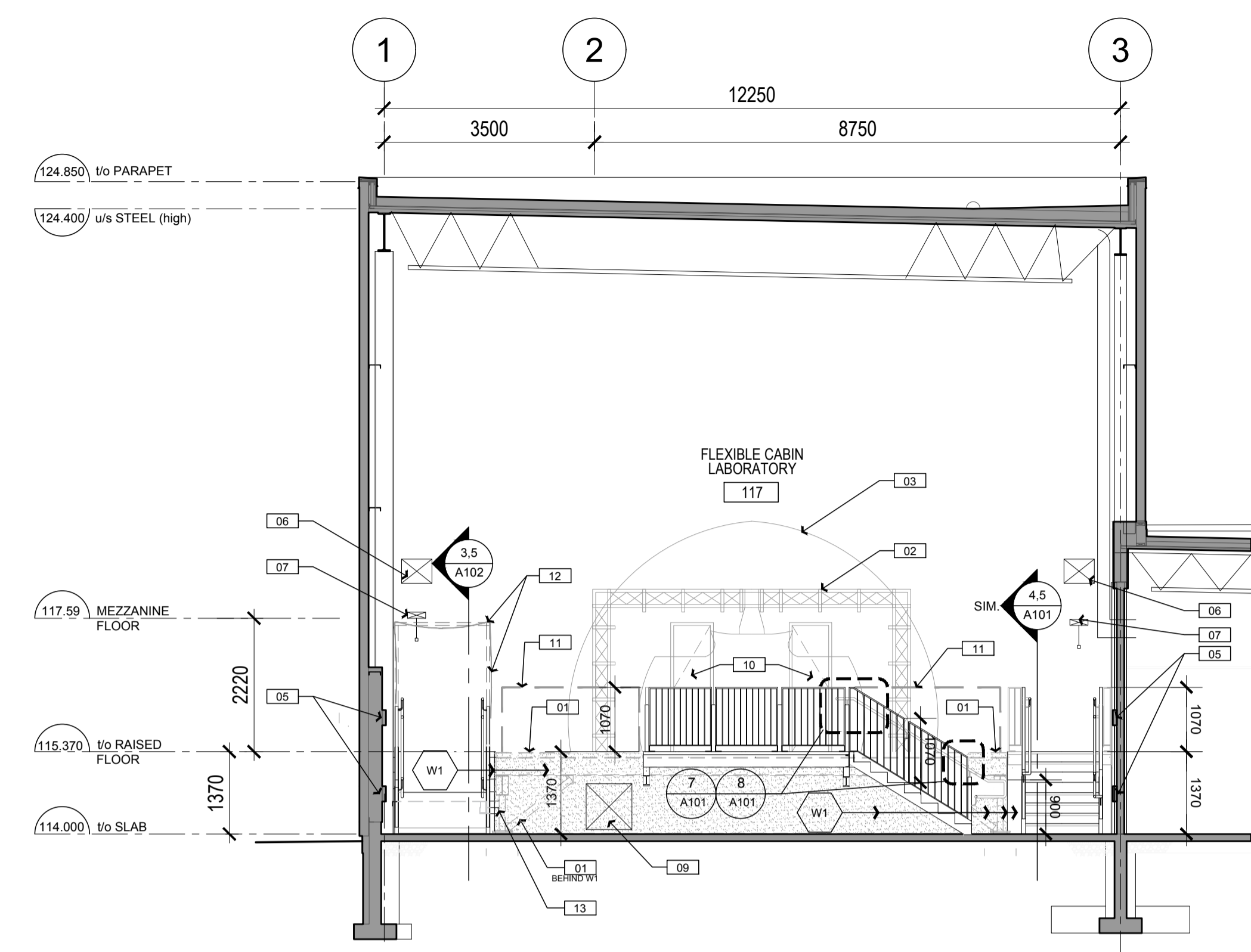
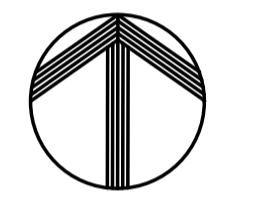
GENERAL NOTES

GENERAL NOTES
 PRIOR TO COMMENCEMENT OF WORK, NOTIFY DEPARTMENTAL REPRESENTATIVE OF ANY DISCREPANCIES NOTED IN THE CONTRACT DOCUMENTS.
 A. ALL GRID TO GRID DIMENSIONS ARE PLUS/MINUS. PRIOR TO COMMENCEMENT OF WORK, REVIEW SITE CONDITIONS AND VERIFY ALL DIMENSIONS. NOTIFY DEPARTMENTAL REPRESENTATIVE OF ANY DISCREPANCIES.
 B. DO NOT SCALE DRAWINGS.
 C. ALL DIMENSIONS ARE INDICATED IN MILLIMETERS UNLESS OTHERWISE SPECIFIED.

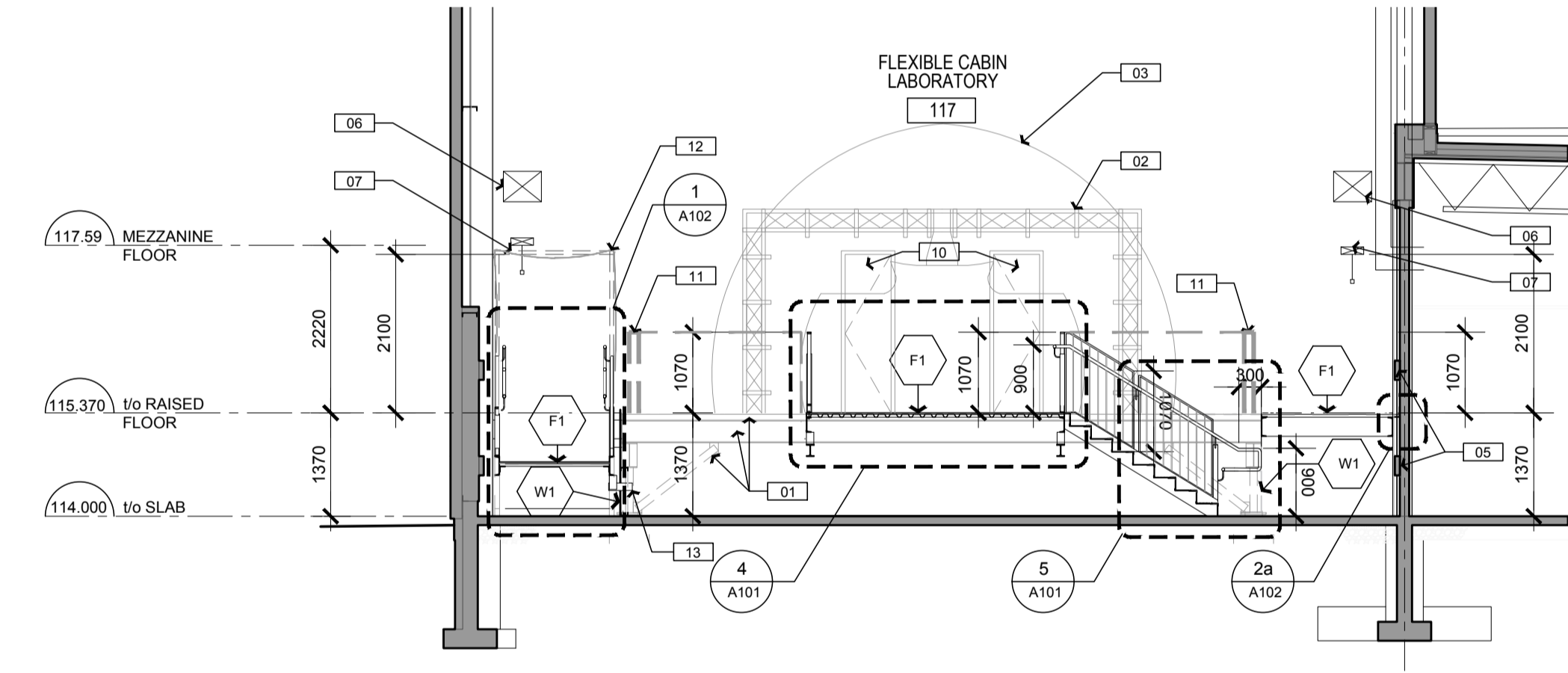
DRAWING NOTES - SHEET(S) A100, A101

- THESE NOTES APPLY TO DRAWING SHEET(S) A100, A101 ONLY.
- EXISTING FCL STRUCTURAL STEEL SUPPORT PLATFORM. BY NRC.
 - EXISTING FCL SUPPORT APPARATUS. BY NRC.
 - EXISTING FCL CABIN ENCLOSURE. BY NRC.
 - EXISTING SERVICE STAIR TO MEZZANINE.
 - EXISTING SURFACE MOUNTED ELECTRICAL RACEWAYS.
 - EXISTING DUCT ABOVE.
 - EXISTING RACEWAY ABOVE.
 - FUTURE VERTICAL MECHANICAL RETURN DUCT TO BE ROUTED TO PLENUM BELOW PLATFORM. COORDINATE WITH NRC DEPARTMENT REP.
 - PAINTED METAL ACCESS HATCH INTO CONCEALED SPACE BELOW PLATFORM. BY NRC. REFER TO SPECIFICATIONS.
 - APPROXIMATE CABIN DOOR LOCATION BY NRC.
 - CONSTRUCTION SAFETY RAIL BY NRC.
 - FUTURE STEEL FRAMED FABRIC STRUCTURE BY NRC.
 - STRUCTURAL SUPPORT BRACKETS. REFER TO STRUCTURAL.
 - PROVIDE PRE-FINISHED OR CLEAR ANODIZED METAL TRIM ANGLE. REFER TO 1/A102 LINE BELOW INDICATES LOCATION.
 - PROVIDE 100MM RESILIENT BASE ALONG BOTTOM OF EXISTING LIGHT GAUGE METAL GYPSUM WALLS. REFER TO 2/A102 LINE BELOW INDICATES LOCATION.

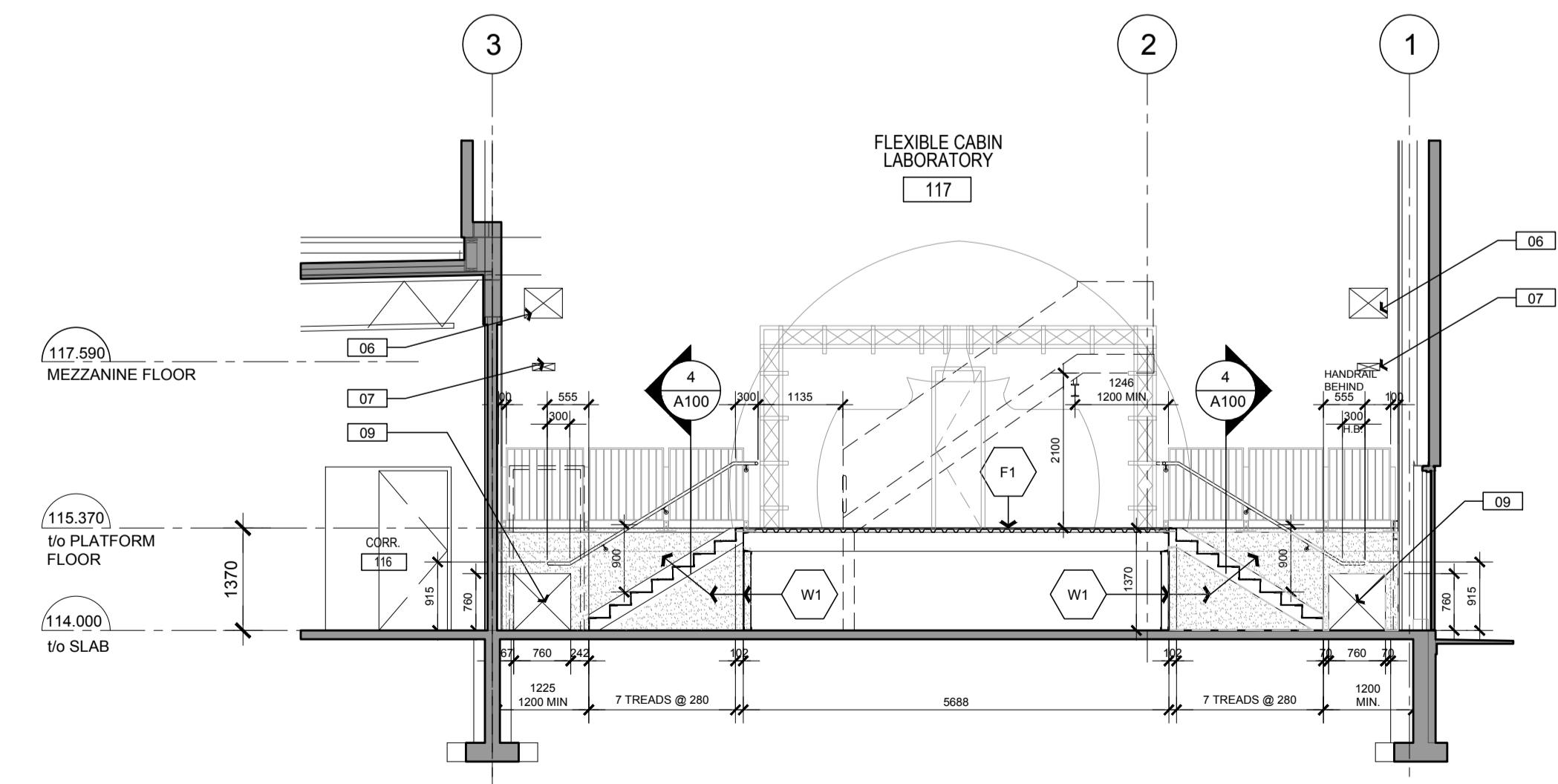
NORTH



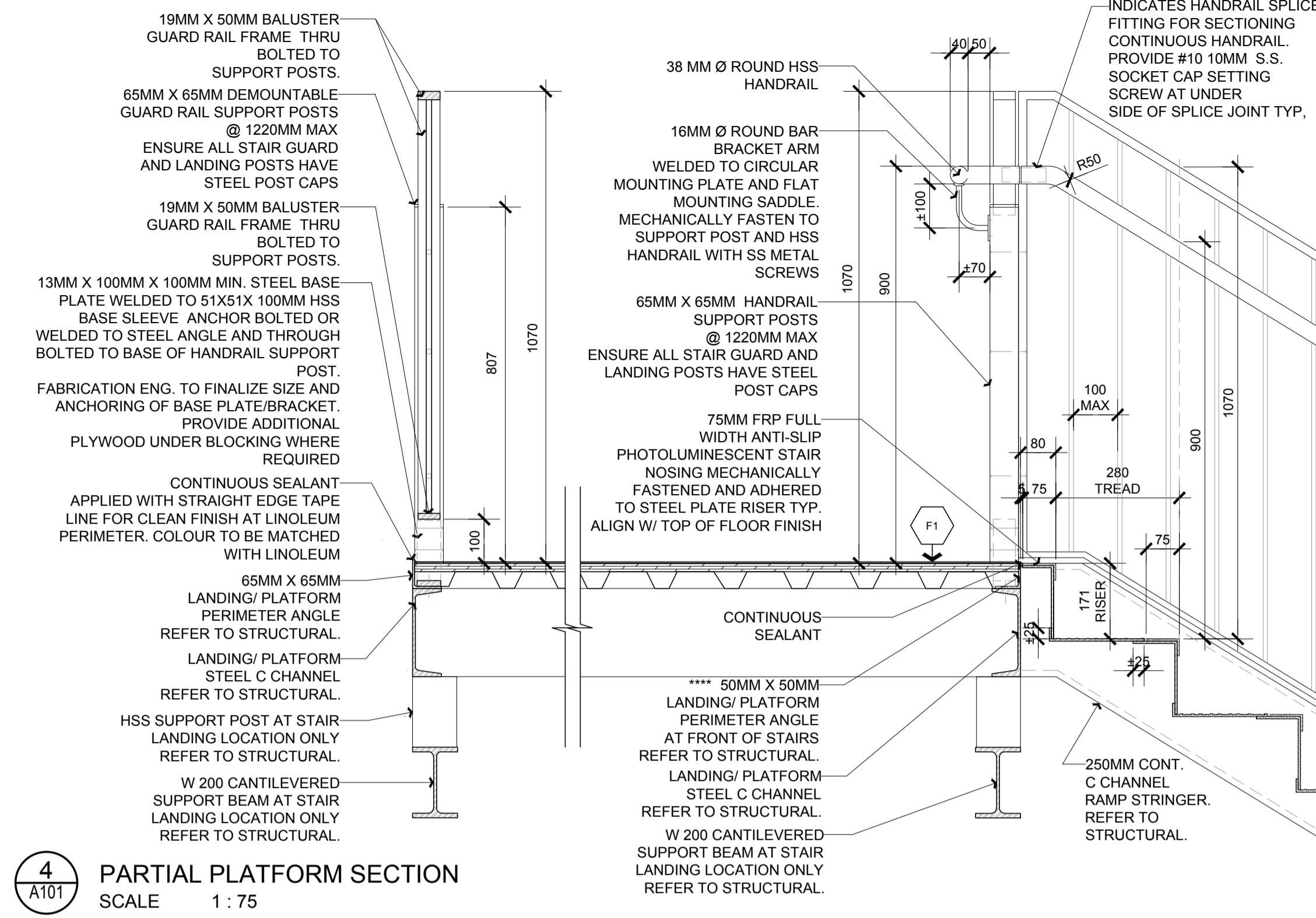
1 PARTIAL PLATFORM SECTION
 SCALE 1:75



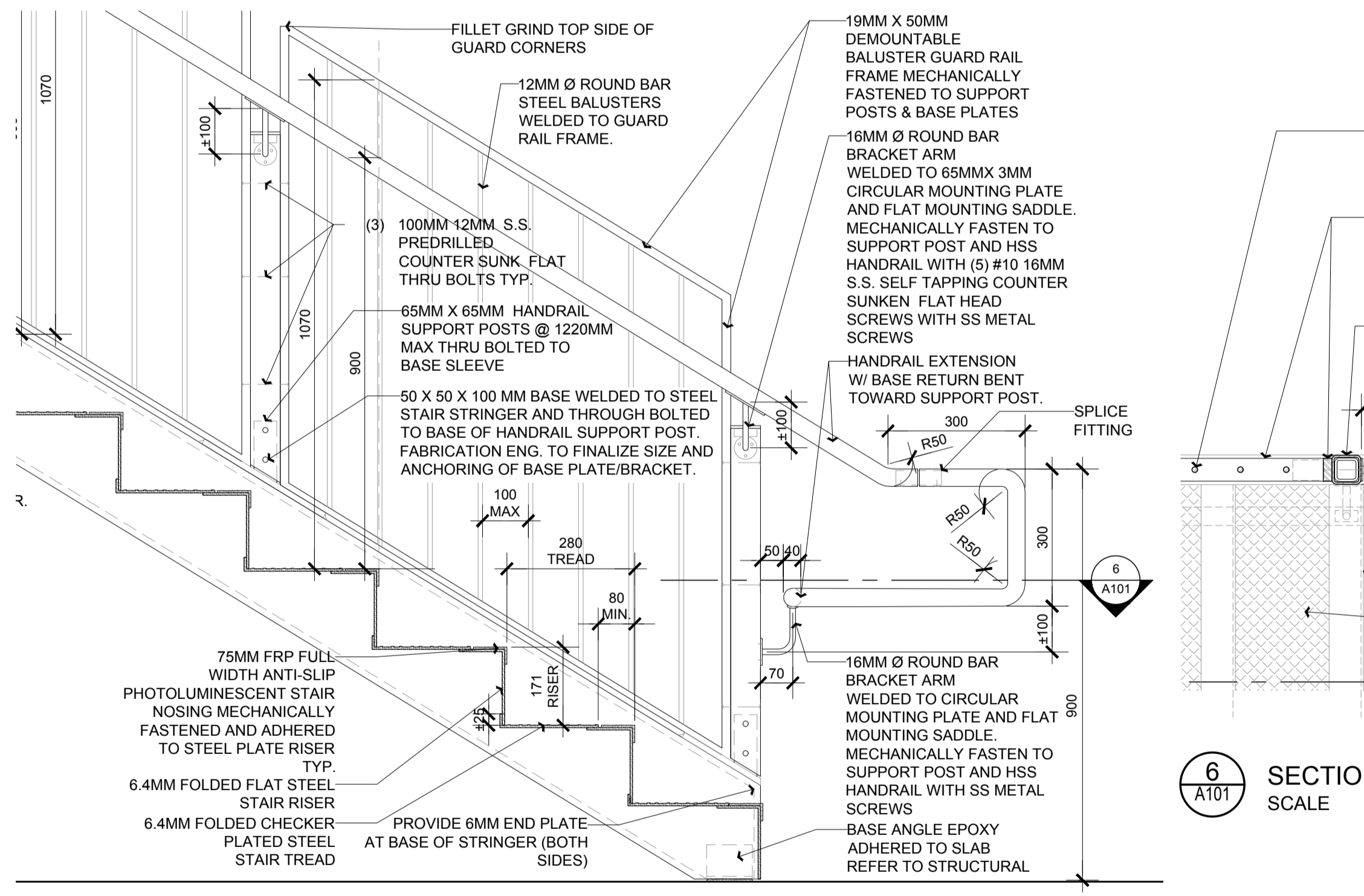
2 PARTIAL PLATFORM SECTION
 SCALE 1:75



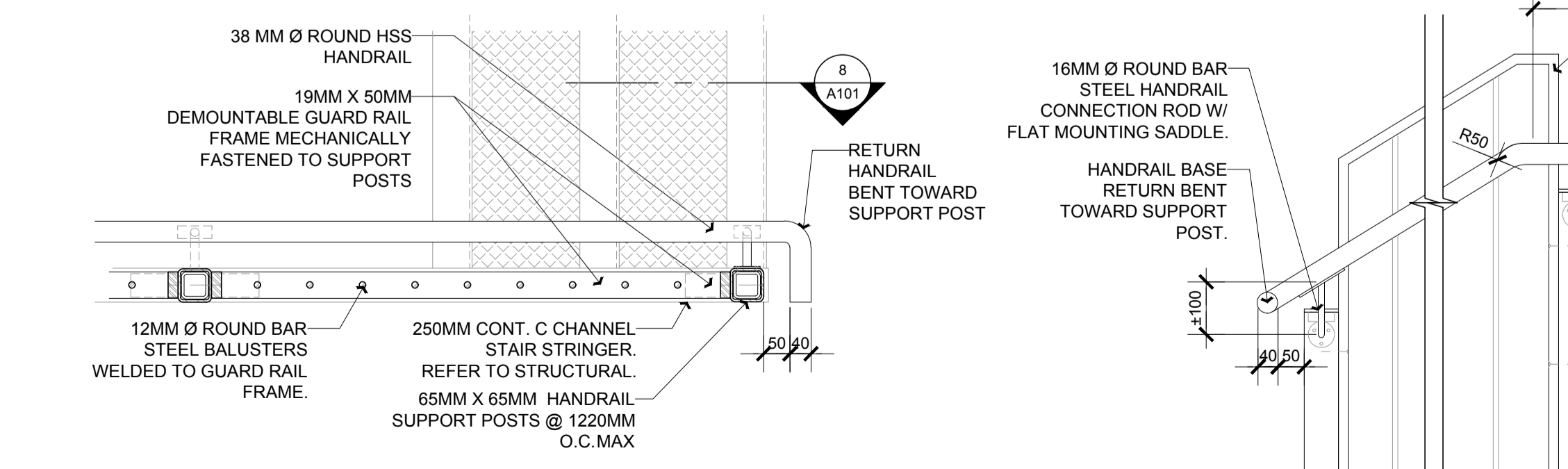
3 PARTIAL PLATFORM SECTION
 SCALE 1:75



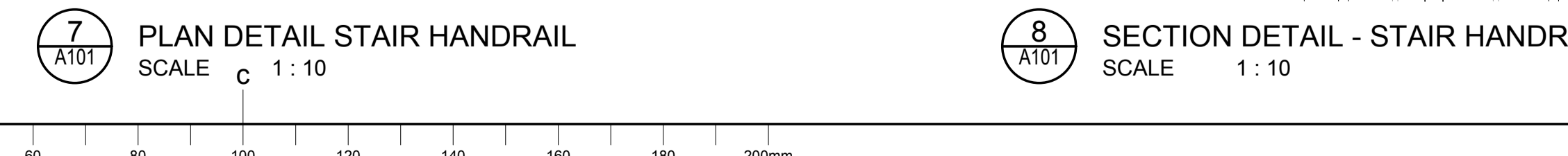
4 PARTIAL PLATFORM SECTION
 SCALE 1:75



5 SECTION DETAIL - STAIR HANDRAIL
 SCALE 1:10



6 SECTION DETAIL - STAIR HANDRAIL
 SCALE 1:10



7 PLAN DETAIL STAIR HANDRAIL
 SCALE 1:10

8 SECTION DETAIL - STAIR HANDRAIL
 SCALE 1:10

No.	Date	Revision	By	For
5	06 28 2018	ISSUED FOR TENDER		KWC
4	04 25 2018	ISSUED FOR COMPLIANCE REVIEW		KWC
3	04 24 2018	ISSUED FOR 100% CLIENT REVIEW		KWC
2	04 03 2018	ISSUED FOR 99% CLIENT REVIEW		KWC
1	01 23 2018	ISSUED FOR 50% CLIENT REVIEW		KWC

kwc
 383 Parkdale Avenue, Suite 201
 Ottawa Ontario Canada K1Y 4R4
KWC ARCHITECTS INC.
 PHONE (613) 238-2117
 FAX (613) 238-6595
 E MAIL kwc@kwc-arch.com

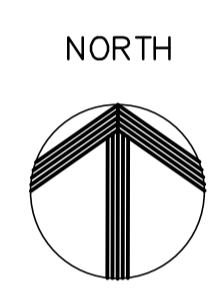
- Verify all dimensions and site conditions and be responsible for same.
- Vérifier toutes les dimensions et l'état des lieux et en assumer la responsabilité

A	A Detail no. No. du détail	A
B	B Location drawing no. sur dessin no.	B
C	C Drawing no. dessin no.	C

project	U-72 CABIN COMFORT AND ENVIRONMENTAL RESEARCH			project
drawing	RAISED PLATFORM SECTIONS + STAIR DETAILS			dessin
designed	conçu	date	date	
CD		Feb. 2018		
drawn	dessiné	scale	échelle	
CD		AS SHOWN		
checked	vérifié	sheet	feuille	
MM		3 of/ de 4		
approved	approuvé	W.O.no.	D.T.no.	
MM				
dwg.no.				dessin no.

GENERAL NOTES

- CONTRACTORS TO CHECK AND VERIFY ALL DIMENSIONS ON SITE PRIOR TO DEMOLITION OR CONSTRUCTION AND REPORT ANY ERRORS OR OMISSIONS TO DEPARTMENTAL REPRESENTATIVE.
- CONTRACTORS MUST VISIT THE SITE & FULLY FAMILIARIZE THEMSELVES WITH THE SCOPE OF THE WORK.
- PREVENT THE SPREAD OF DUST & DEBRIS BEYOND THE WORK AREA AND CLEAN ALL SURFACES AT COMPLETION.
- MAKE GOOD ALL SURFACES AFFECTED BY THIS WORK.
- COORDINATE ALL SHUTDOWNS WITH THE DEPARTMENTAL REPRESENTATIVE.
- PROVIDE ALL LABOUR AND MATERIAL REQUIRED TO FORM A COMPLETE, FUNCTIONAL SYSTEM AS DESCRIBED ON DRAWINGS.



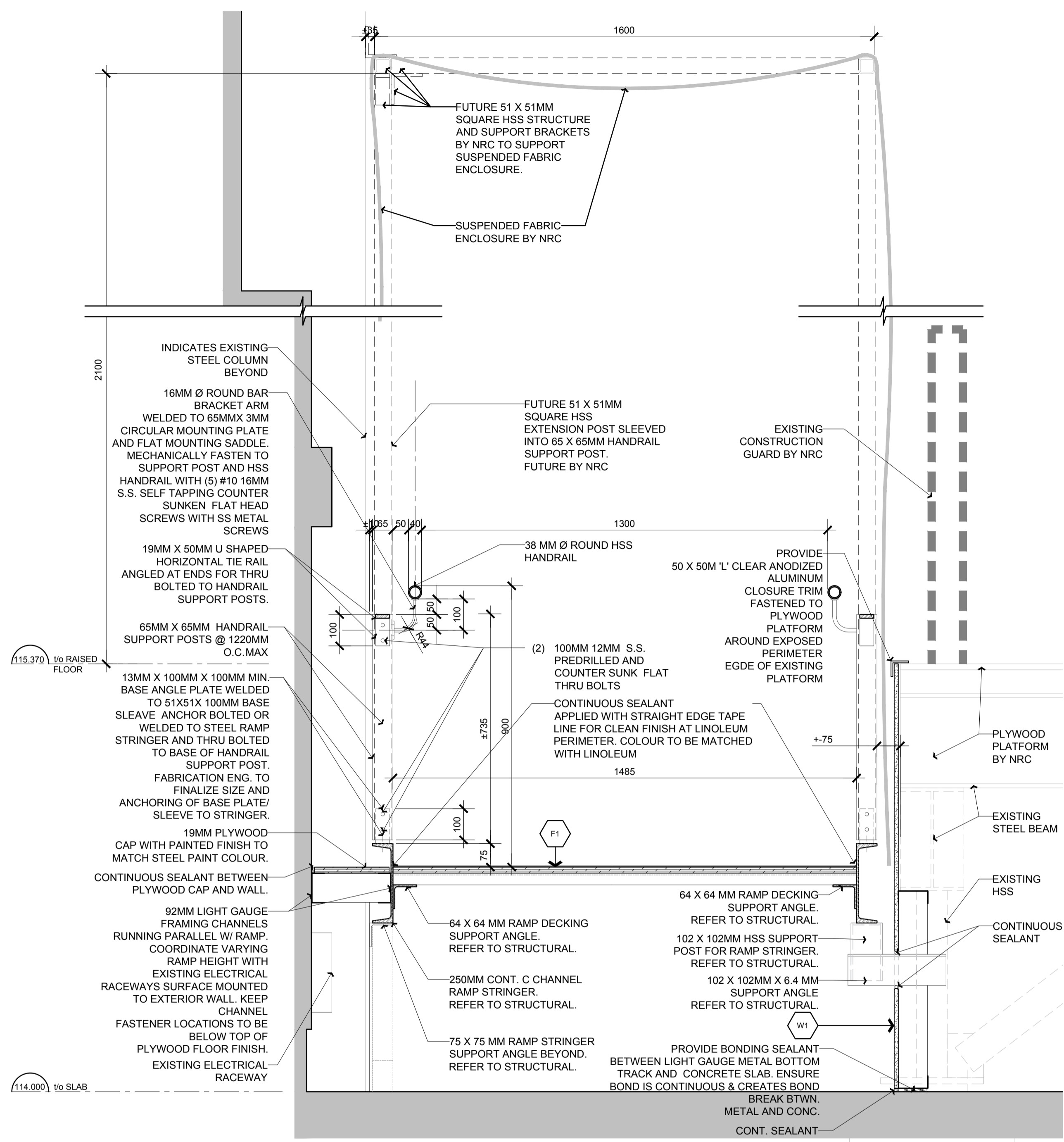
No.	Date	Revision	By	Par
5	06 28 2018	ISSUED FOR TENDER		KWC
4	04 25 2018	ISSUED FOR COMPLIANCE REVIEW		KWC
3	04 24 2018	ISSUED FOR 100% CLIENT REVIEW		KWC
2	04 03 2018	ISSUED FOR 99% CLIENT REVIEW		KWC
1	01 23 2018	ISSUED FOR 50% CLIENT REVIEW		KWC

kwc 383 Parkdale Avenue, Suite 201
 Ottawa Ontario Canada K1Y 4R4
KWC ARCHITECTS INC.
 PHONE (613) 238-2117
 FAX (613) 238-6595
 E MAIL kwc@kwc-arch.com

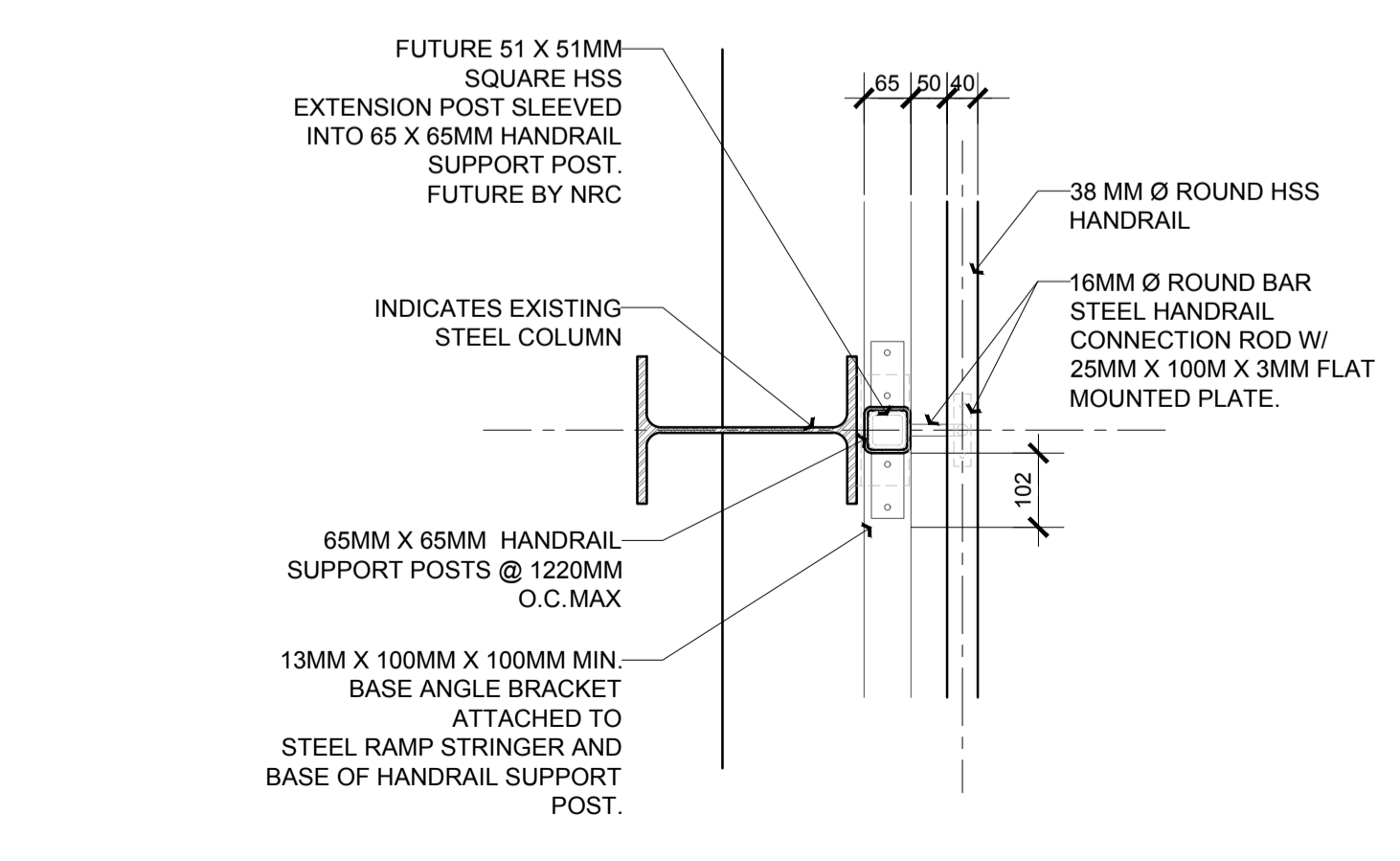
- Verify all dimensions and site conditions and be responsible for same
- Vérifier toutes les dimensions et l'état des lieux et en assumer la responsabilité

A	A Detail no. No. du détail	A
B	B Location drawing no. sur dessin no.	B
C	C Drawing no. dessin no.	C

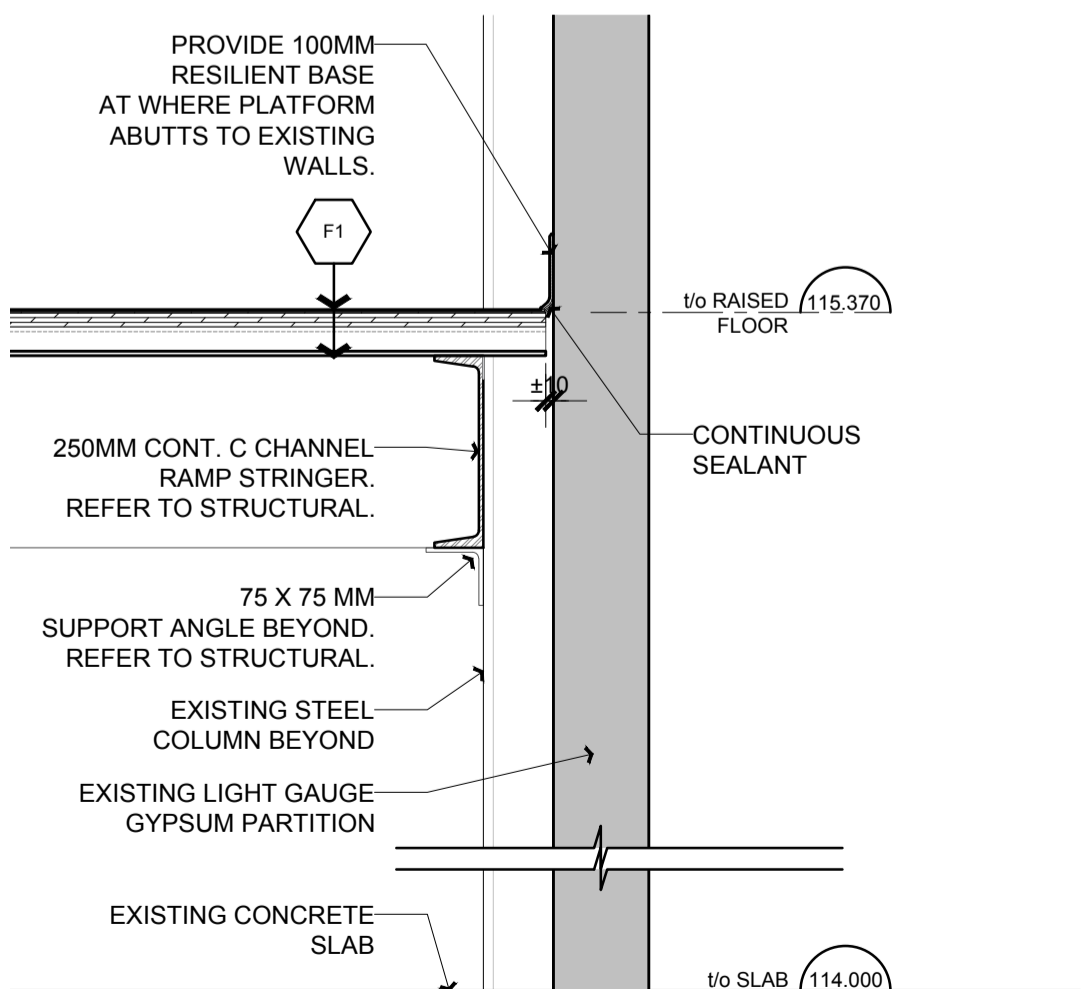
project	project		
U-72 CABIN COMFORT AND ENVIRONMENTAL RESEARCH			
OTTAWA, ON			
drawing	dessin		
RAISED PLATFORM RAMP DETAILS			
designed	conçu	date	date
CD		Feb. 2018	
drawn	dessiné	scale	échelle
CD		AS SHOWN	
checked	vérifié	sheet	feuille
MM		4	4
approved	approuvé	W.O.no.	D.T.no.
MM			
dwg.no.	dessin no.		
5577 - A102			



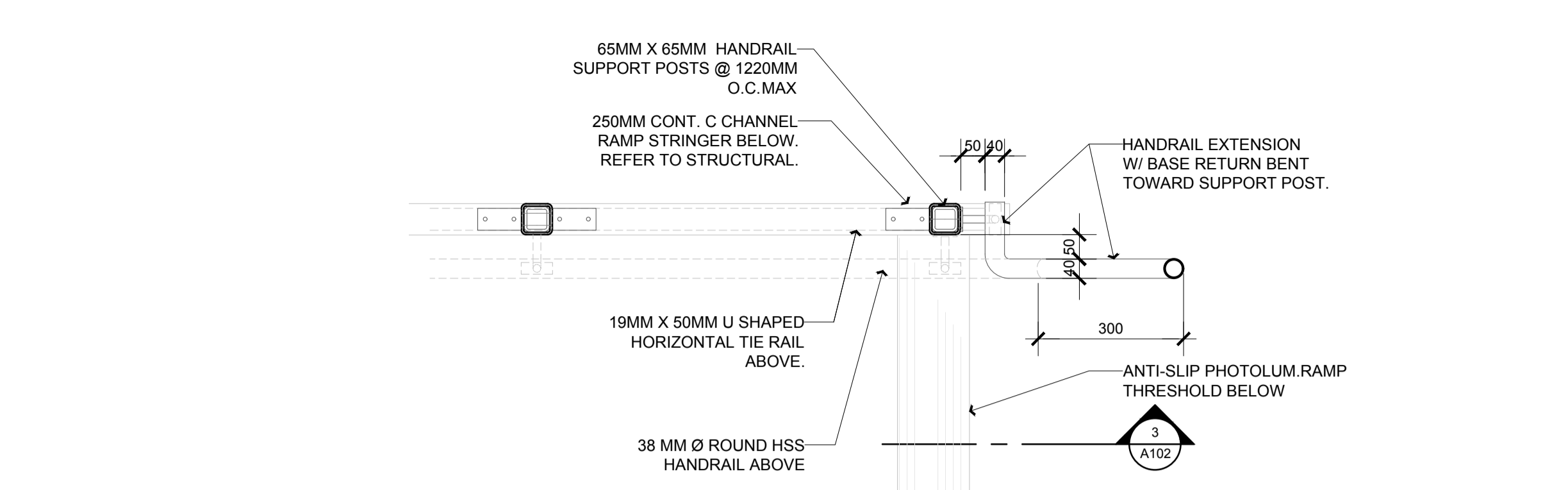
1 SECTION DETAIL
 SCALE 1:10



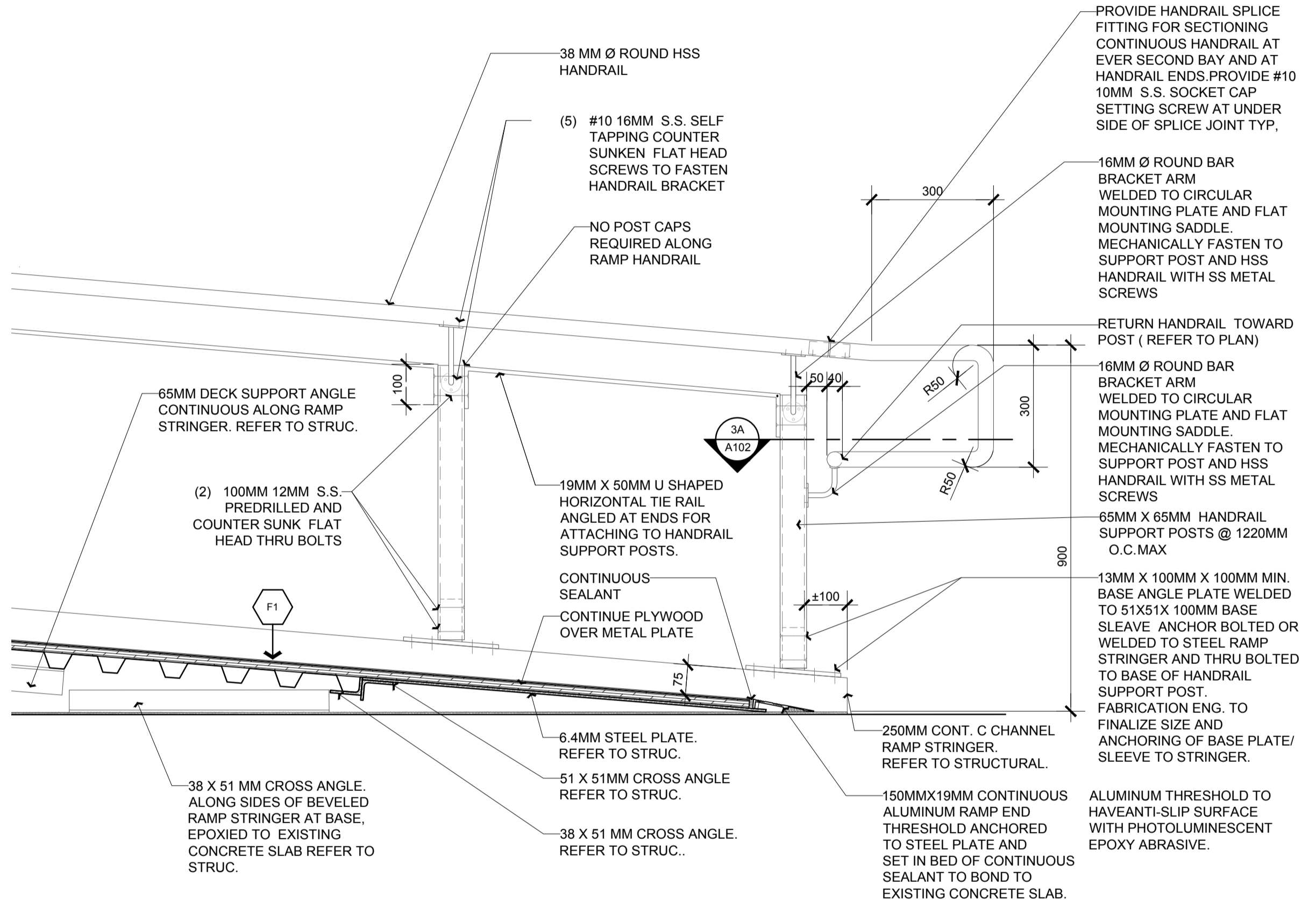
2 PLAN DETAIL
 SCALE 1:10



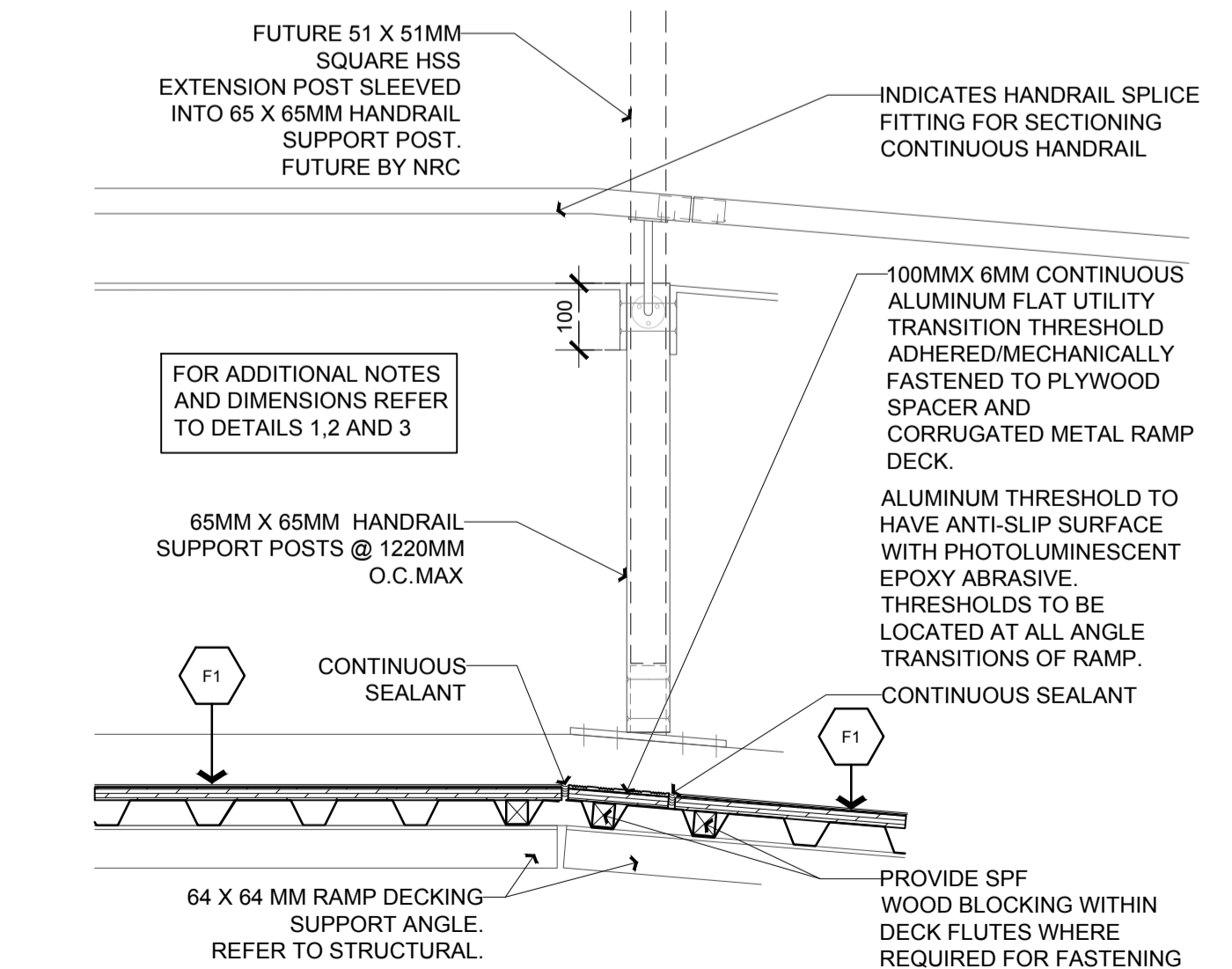
2a SECTION DETAIL
 SCALE 1:10



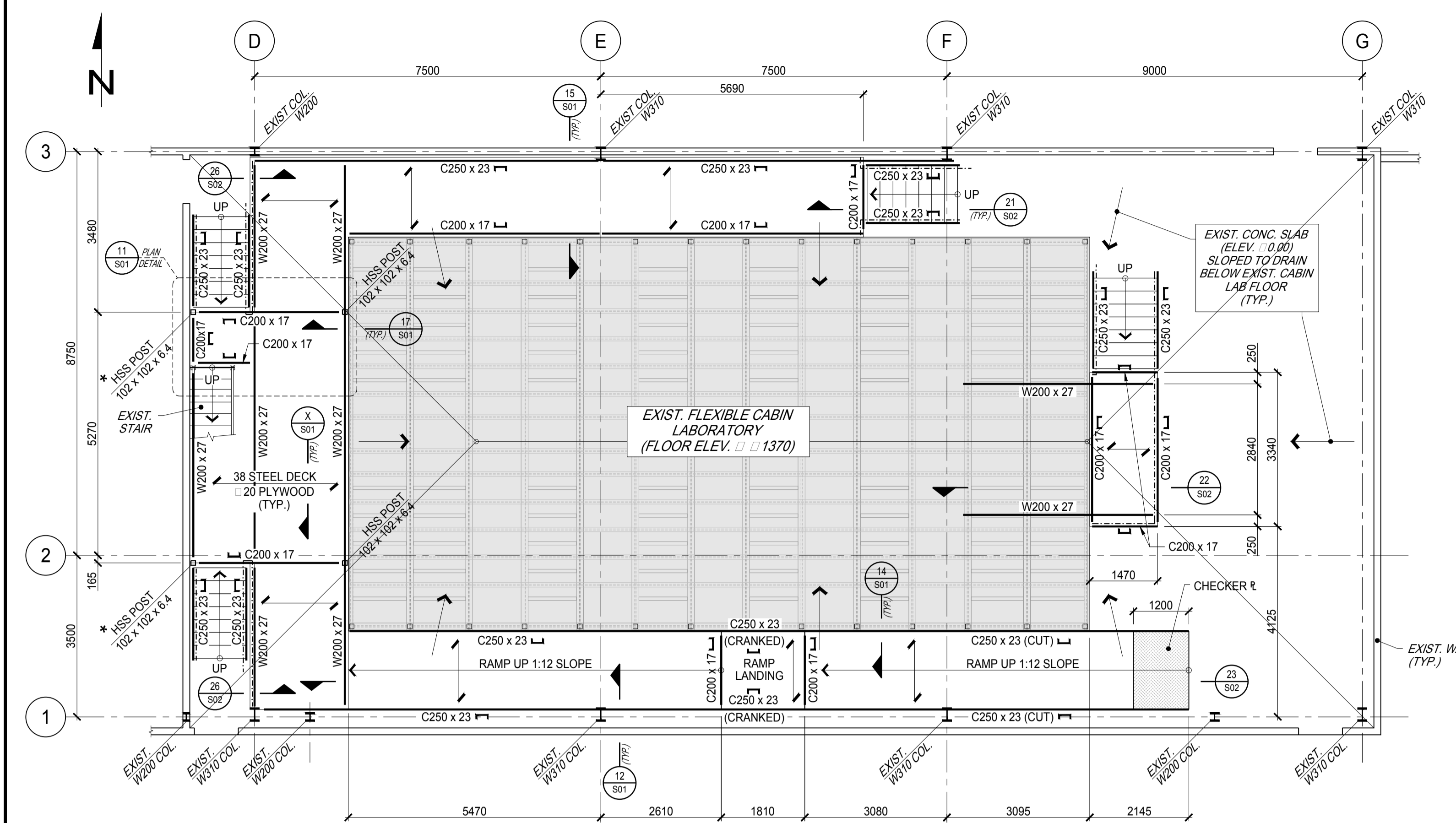
4 SECTION DETAIL
 SCALE 1:10



3 SECTION DETAIL
 SCALE 1:10

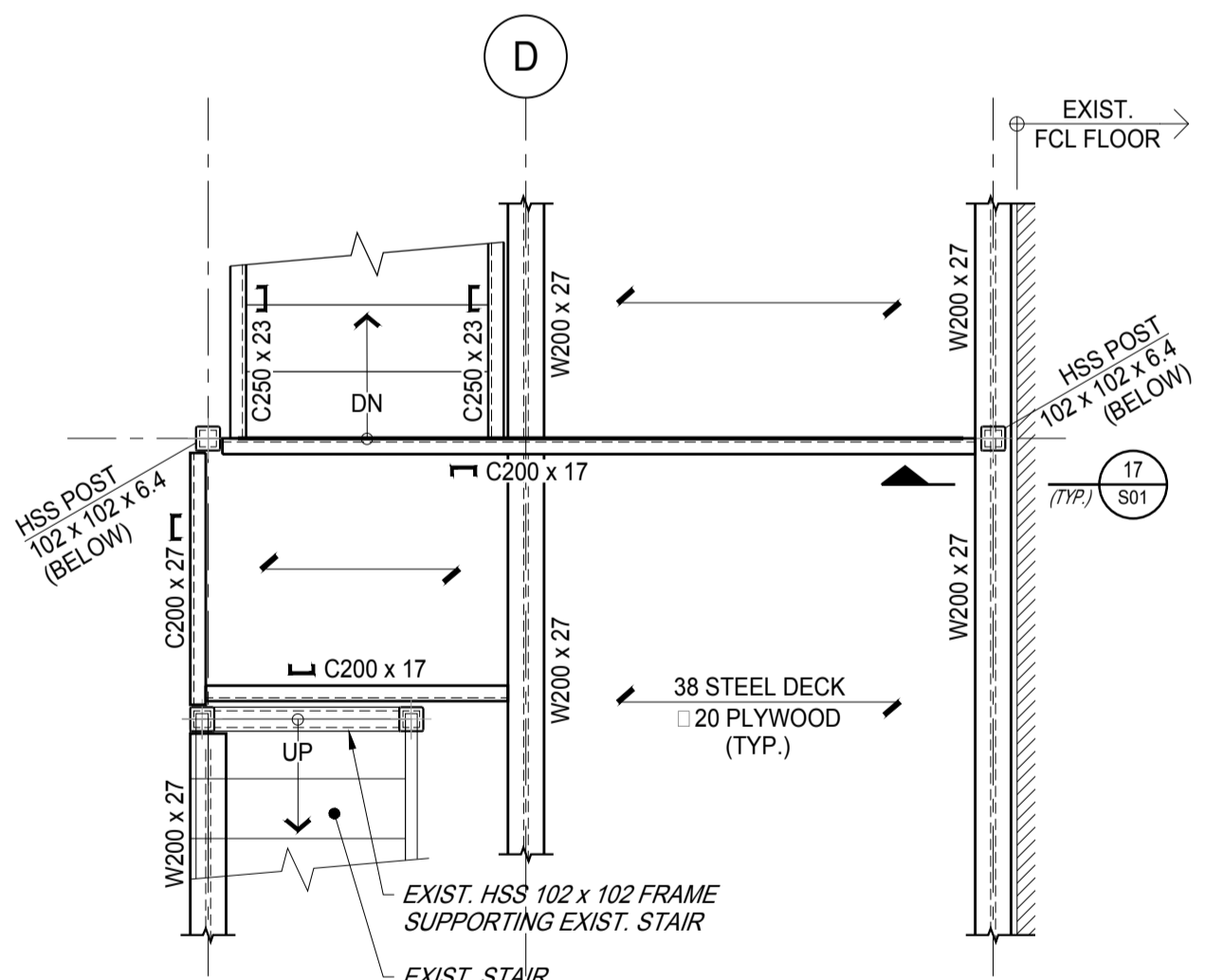


5 SECTION DETAIL
 SCALE 1:10

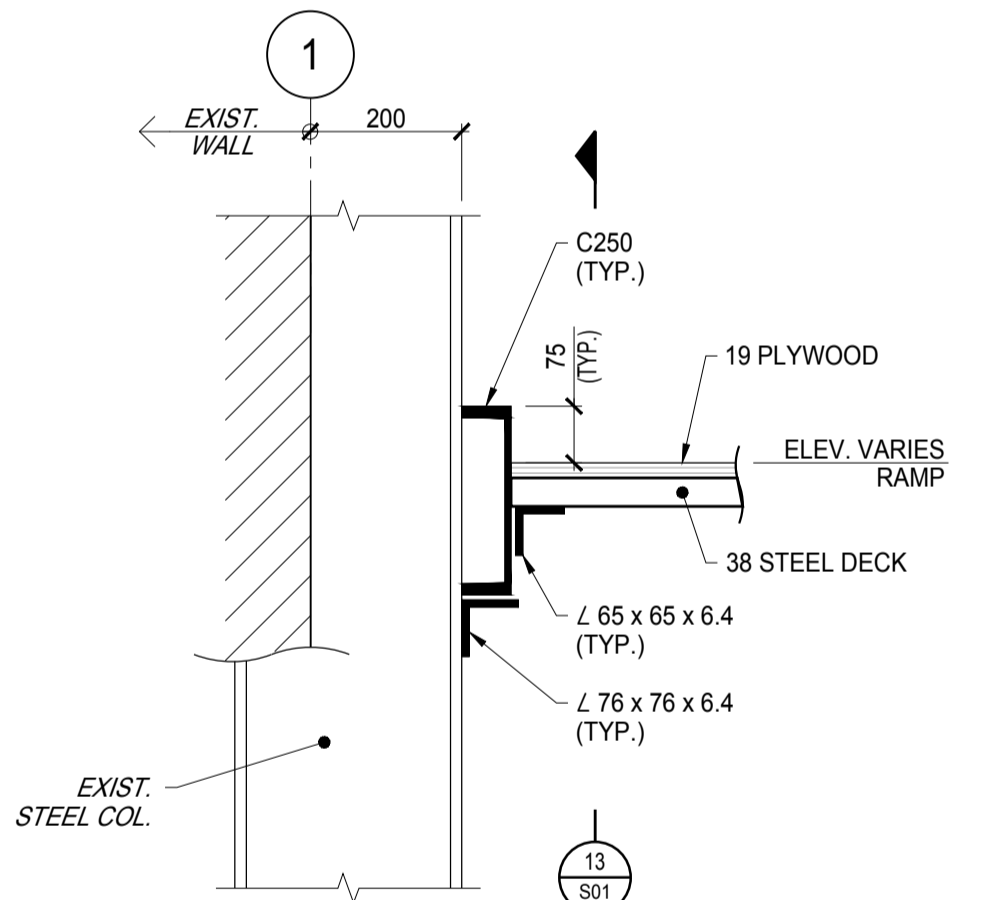


PLATFORM PLAN

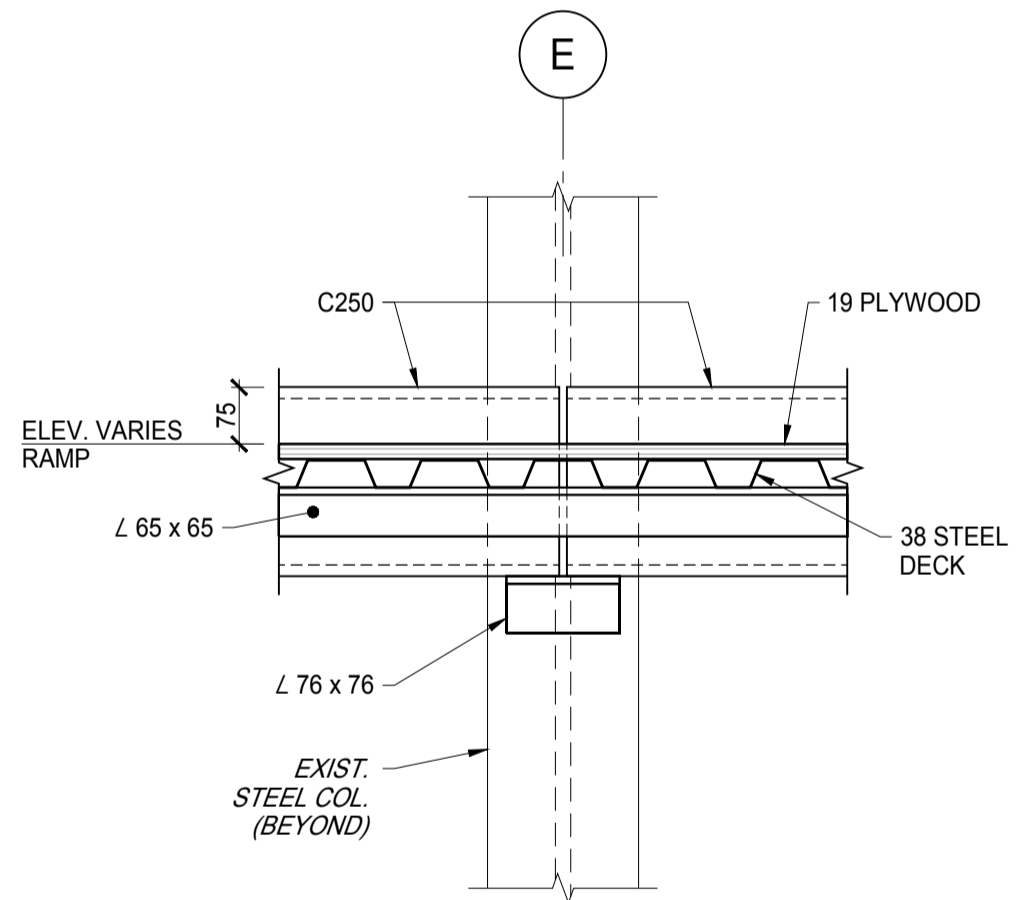
- SCALE 1:75
- TOP OF EXISTING PLYWOOD FLOOR @ 1370
 - DESIGN LIVE LOAD @ 4.80 P (100 LBS./SQ. FT.)
 - *FOR BASE PLATE DETAILS, REFER TO DETAIL Y/S01
 - GUARDS (REFER TO ARCHITECTURAL DRAWINGS)



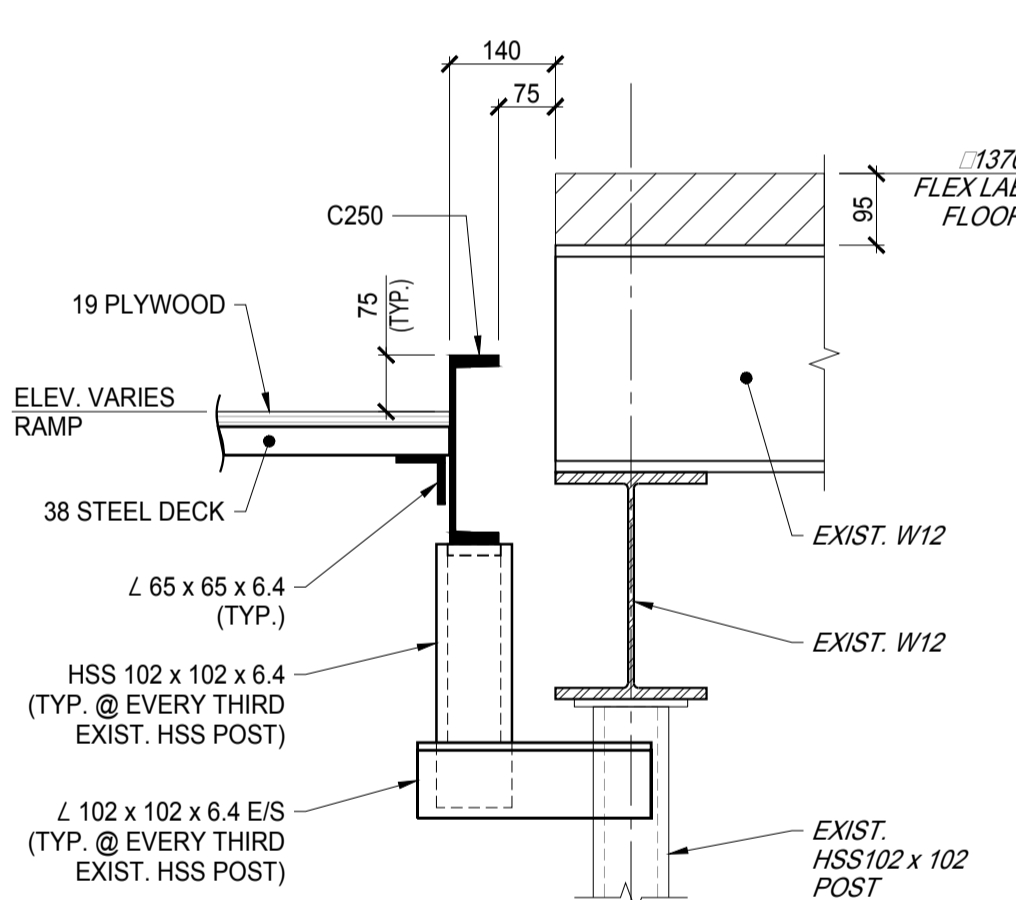
11 PLAN DETAIL
SCALE 1:30



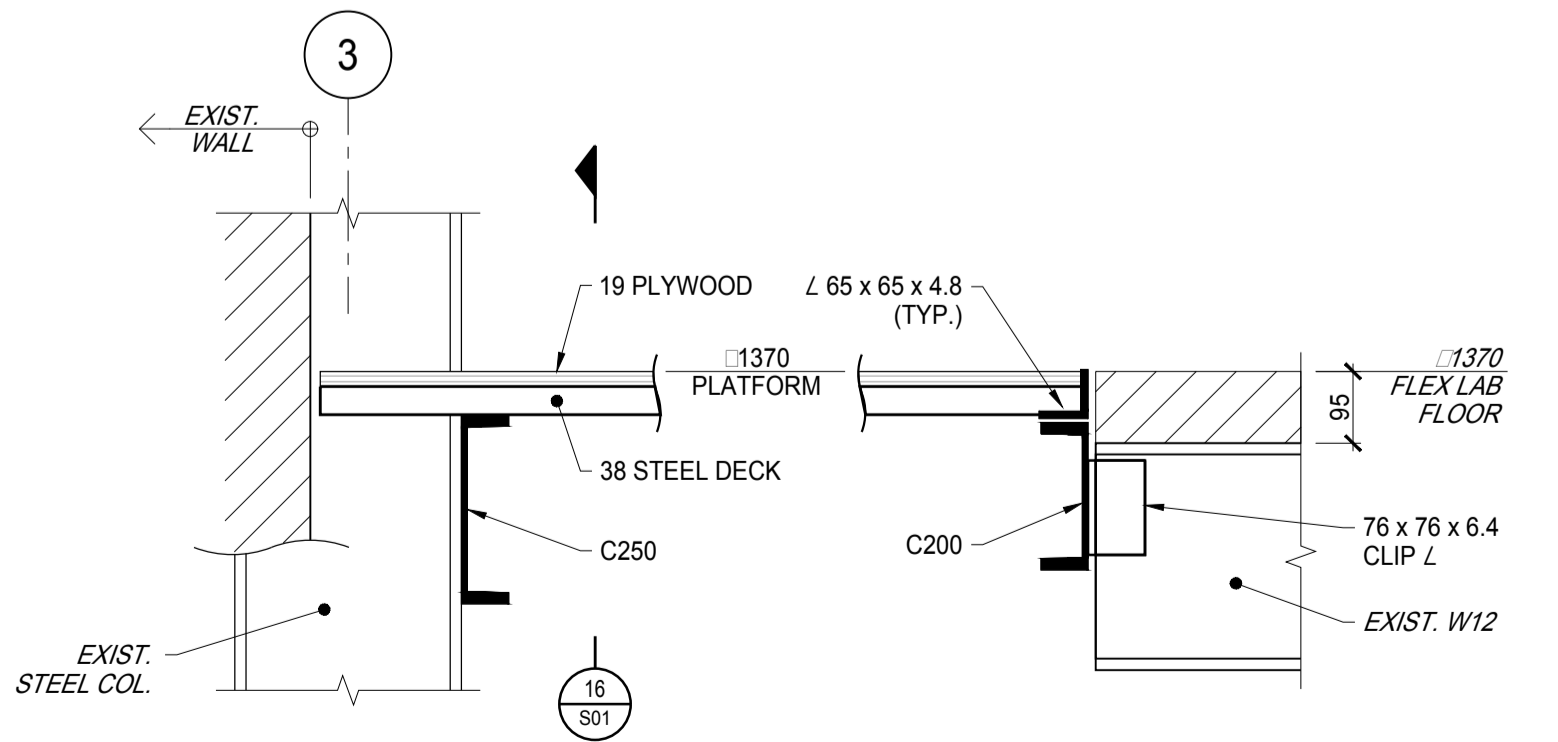
12 SECTION - RAMP
SCALE 1:10



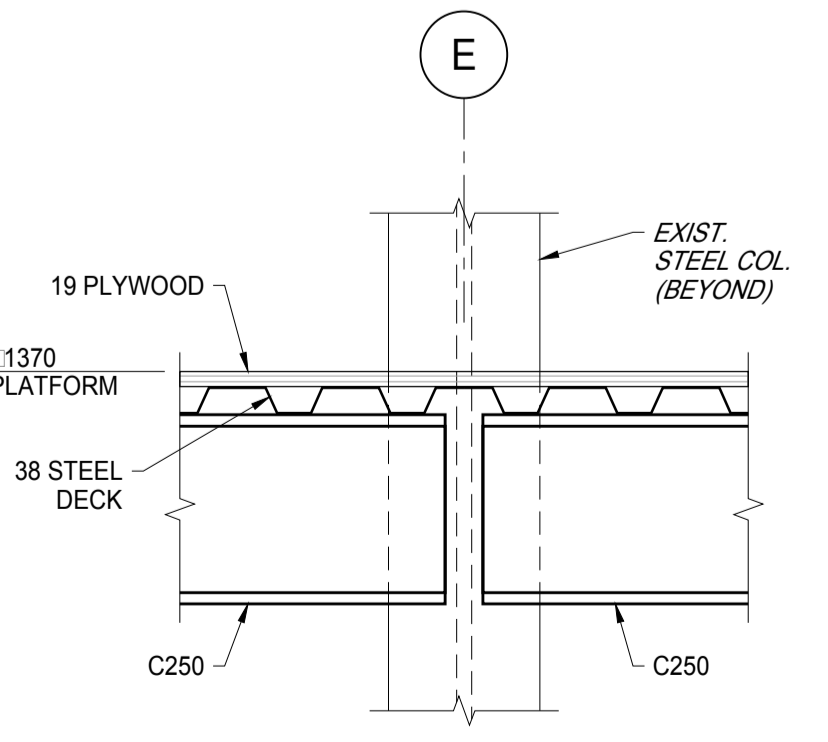
13 SECTION
SCALE 1:10



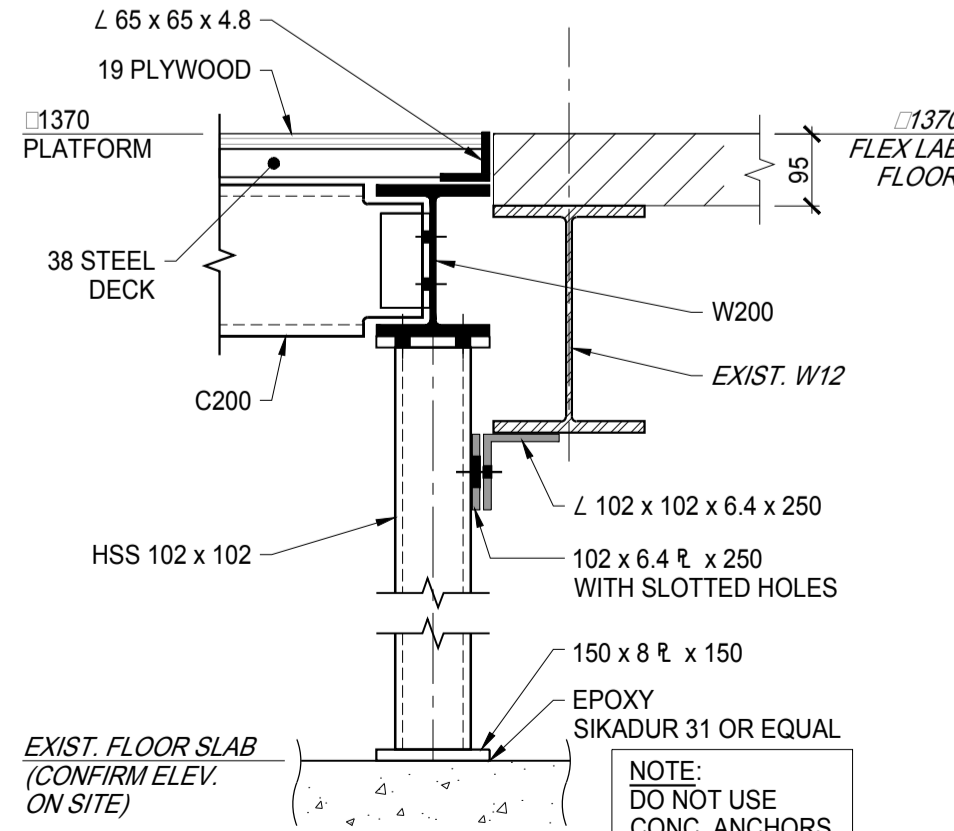
14 SECTION
SCALE 1:10



15 SECTION
SCALE 1:10



16 SECTION
SCALE 1:10



17 SECTION
SCALE 1:10

REFERENCE DRAWINGS:

- ARCHITECTURAL DRAWING A100, A101 AND A102 PREPARED BY KWC ARCHITECTS INC.

GENERAL NOTES:

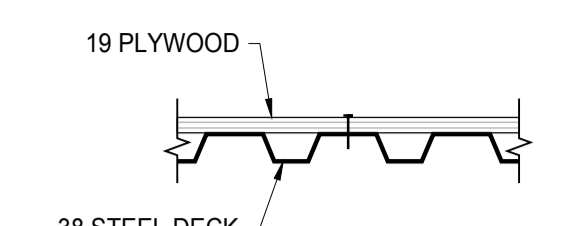
- STRUCTURAL STEEL:**
- ALL STRUCTURAL STEEL SHALL CONFORM TO CSA G40.20-04 AND CSA G40.21-04.
 - ALL STRUCTURAL STEEL SHALL RECEIVE ONE COAT OF PRIMER CONFORMING TO CAN/CGSB 1-40-97, "ANTI-CORROSIVE STRUCTURAL STEEL ALKYD PRIMER."
 - ALL WELDING MATERIALS SHALL CONFORM TO CSA W48.06.
 - WELDING SHALL CONFORM TO CSA W59-03 (R2008) AND SHALL BE CARRIED OUT BY WELDERS QUALIFIED BY THE CANADIAN WELDING BUREAU.
 - ALL BOLTS SHALL BE 19 mm DIA. HIGH TENSILE BOLTS CONFORMING TO ASTM F3125, GRADE A325.
 - THE STRUCTURAL STEEL CONTRACTOR SHALL SUBMIT SHOP DRAWINGS FOR REVIEW BEFORE THE START OF FABRICATION. NOTIFY ENGINEER OF ANY DISCREPANCIES.
 - THE CONTRACTOR SHALL VERIFY DIMENSIONS ON SITE BEFORE THE START OF FABRICATION.
 - ALL STRUCTURAL STEEL WORK SHALL CONFORM TO CAN/CSA S16-14.

STEEL DECK:

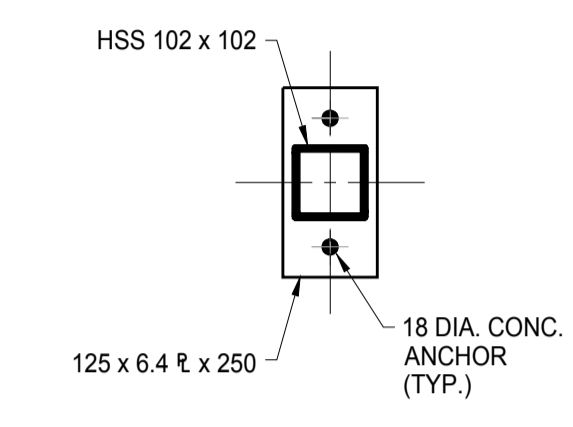
- THE STEEL DECK SHALL CONFORM TO ASTM A653M, GRADE 200.
- THE DECK SHALL BE 38 mm DEEP x 1.52 mm THICK.
- THE DECK SHALL BE GALVANIZED IN ACCORDANCE WITH ASTM A653M.
- THE DECK SHALL BE FASTENED TO STRUCTURAL STEEL SUPPORTING MEMBERS WITH #12 SELF-DRILLING SCREWS @300 mm SPACING. SIDE LAPS SHALL BE #10 SCREWS @600 mm.

PLYWOOD:

- FOR PLYWOOD SPECIFICATIONS AND FASTENING TO STEEL DECK, REFER TO ARCHITECTURAL DRAWINGS.



X DETAIL (TYPICAL)
SCALE 1:10



Y DETAIL (TYPICAL BASE PL @2 LOCATIONS)
SCALE 1:10



No.	Date	Revision	By
2	JUNE 28/18	RE-ISSUED FOR TENDER	R.L.
1	MAY 9/18	ISSUED FOR TENDER	R.L.
0	MAR 22/18	PRELIMINARY	R.L.

- Vérifier toutes les dimensions et l'état des lieux et en assumer la responsabilité.

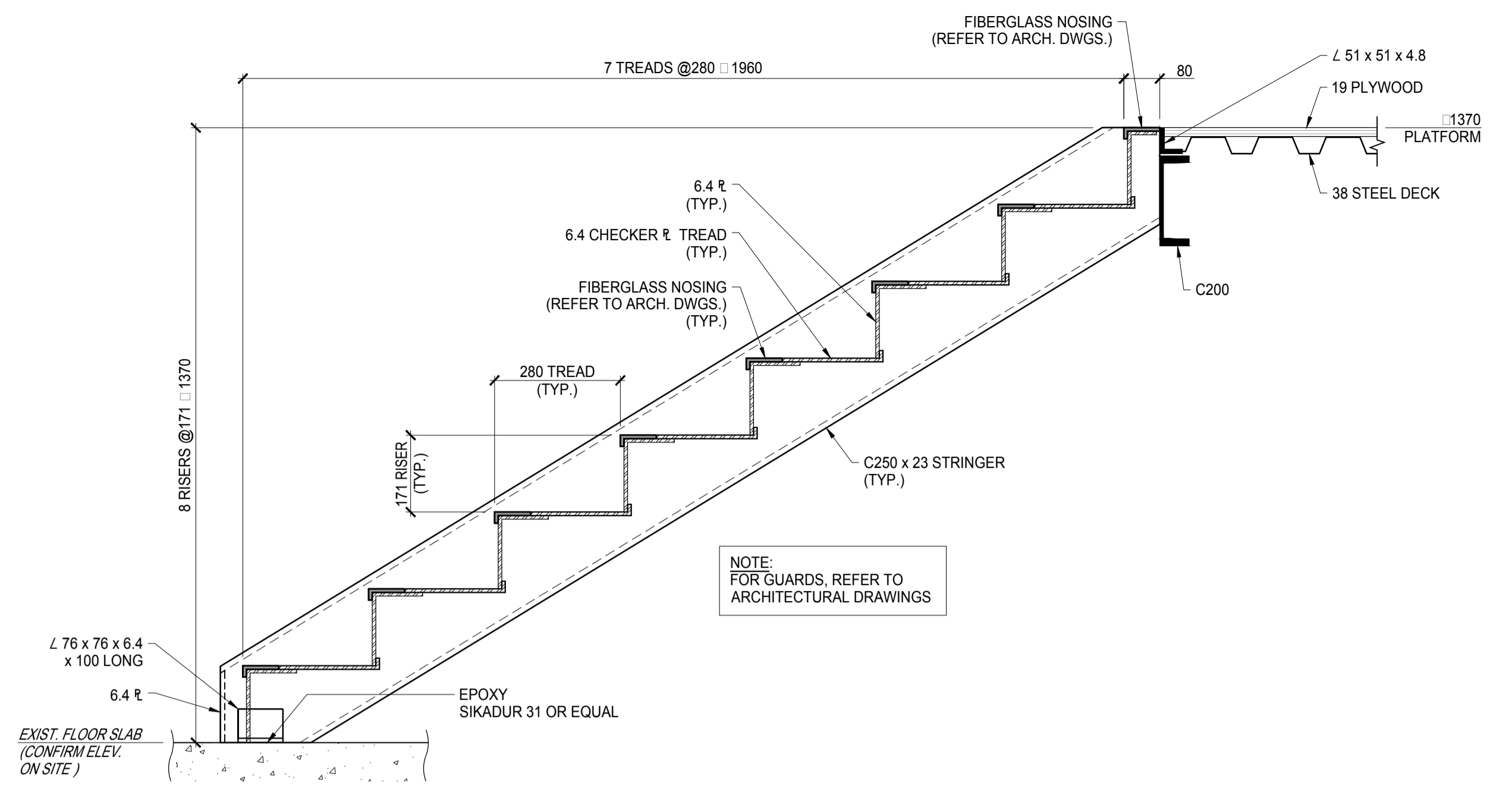
A	A.D.T. no.	A
C	No. du détail	B
	B. Loc. ton dr. no.	C
	C. Dr. no.	

BUILDING U-72
CABIN COMFORT AND ENVIRONMENTAL RESEARCH
 UPLANDS CAMPUS

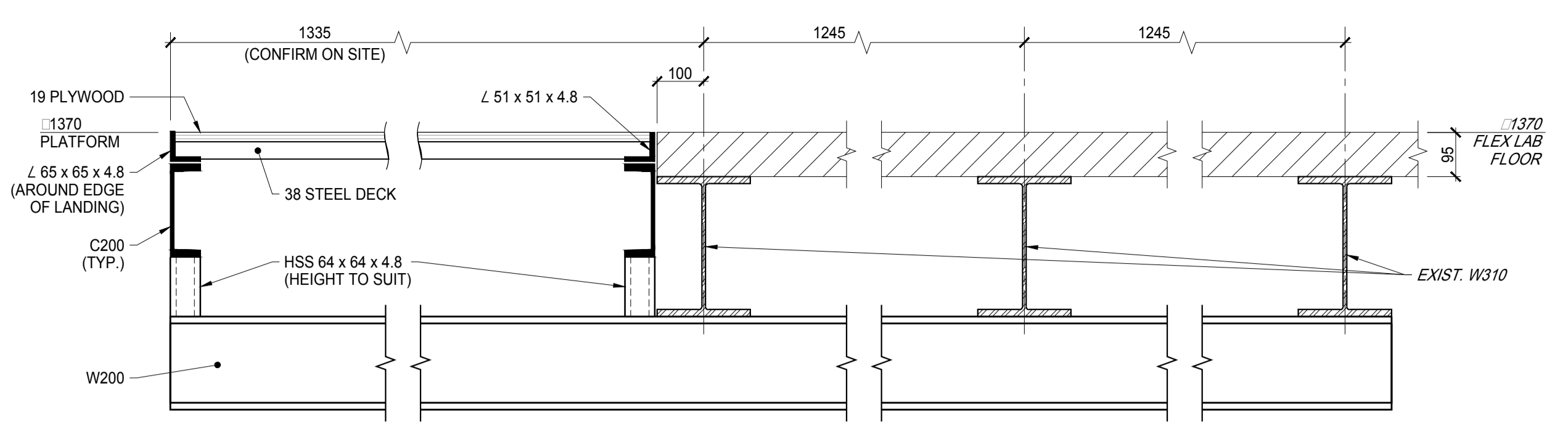
STRUCTURAL:
RAISED PLATFORM PLAN AND DETAILS

designé par	composé par	date
R.L.	R.L.	FEBRUARY, 2018
dessiné par	échelle	
D.M.D.	AS SHOWN	
vérifié par	no. de détail	
R.L.	S01	S02
approuvé par	W.O. no.	D.T. no.

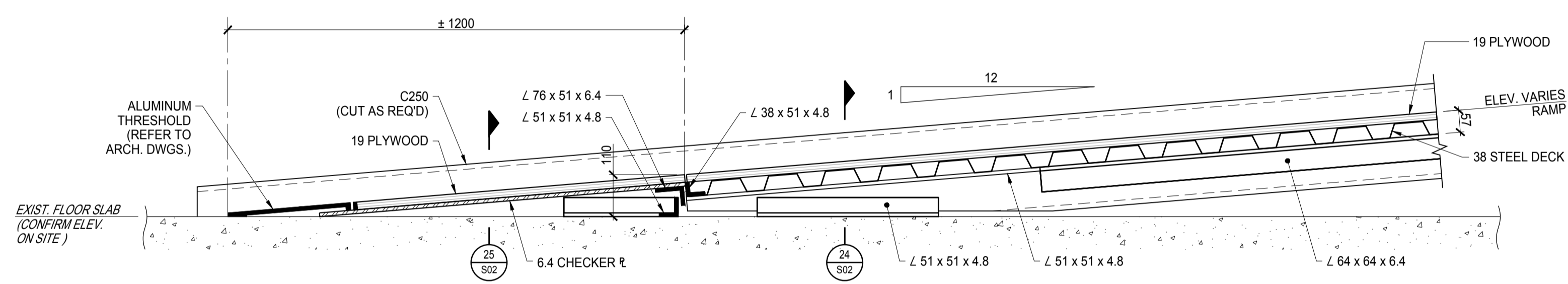
5577-S01



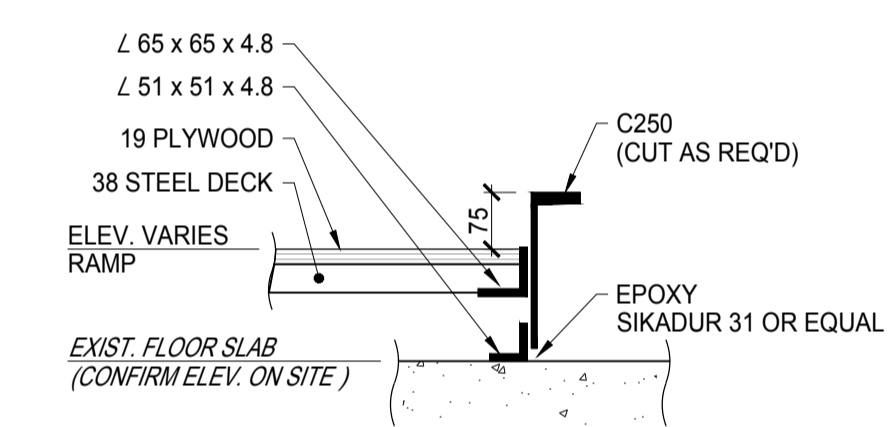
21 SECTION
 S02 (TYPICAL STAIR)
 SCALE 1:10



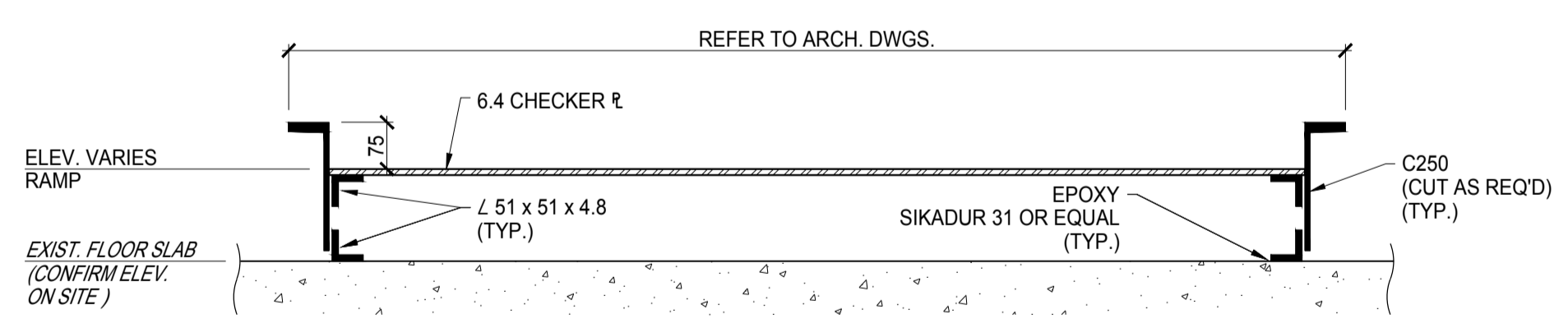
22 SECTION
 S02
 SCALE 1:10



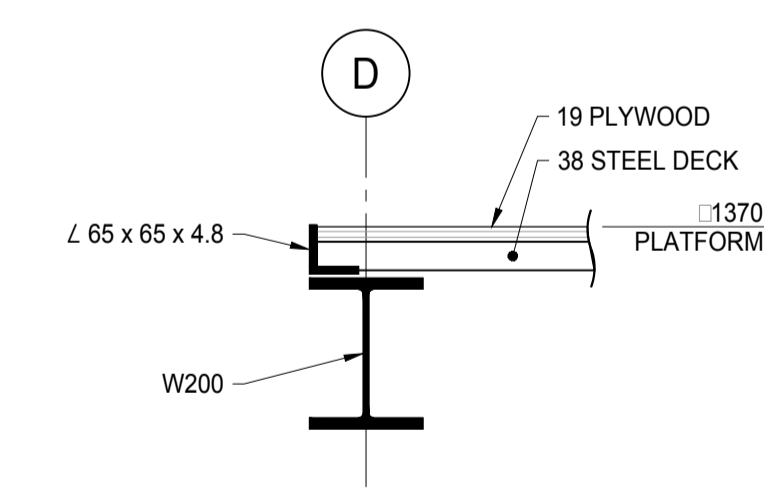
23 SECTION - RAMP
 S02
 SCALE 1:10



24 SECTION
 S02
 SCALE 1:10



25 SECTION - RAMP
 S02
 SCALE 1:10



26 SECTION
 S02
 SCALE 1:10

No.	Date	Revision	By
2	JUNE 28/18	RE-ISSUED FOR TENDER	R.L.
1	MAY 9/18	ISSUED FOR TENDER	R.L.
0	MAR 22/18	PRELIMINARY	R.L.

• Vérifier toutes les dimensions et l'état des lieux et en assumer la responsabilité.
 • Vérifier toutes les dimensions et l'état des lieux et en assumer la responsabilité.

A	A D.T. no.	A
C	No. du détail	B
	B Loc. ton dr. no.	C
	C Dr. no.	
	D D.T. no.	

BUILDING U-72
CABIN COMFORT AND
ENVIRONMENTAL RESEARCH
 UPLANDS CAMPUS

STRUCTURAL:
RAISED PLATFORM DETAILS

design	R.L.	compute	FEBRUARY, 2018
drawn	D.M.D.	designé	AS SHOWN
checked	R.L.	vérifié	S02
approved		W.O. no.	S02

5577-S02

