

The following changes to the tender documents are effective immediately and will form part of the contract documents:

This addendum consists of two (2) pages plus the following list of attached drawings:

No.	Drawing Title	Issue Date
RA1.1	Podium	3 July 2018
RA1.2	Floor Plan Modifications	13 July 2018
RA1.3	Ceiling Modifications	13 July 2018
RA1.4	Finishes Modifications	13 July 2018
RA1.5	Partial Basement Plan	13 July 2018
M6R1	HVAC Plan	11 July 2018
E5R1	Lighting Plan	11 July 2018
E7R1	Life Safety Plan	11 July 2018
T3R1	Telecommunications Layout	11 July 2018
T4R1	Access Control/Intrusion Alarm Layout	11 July 2018
T5R1	Sound Masking Plan	11 July 2018

## 1.2 CHANGES TO THE PROJECT MANUAL

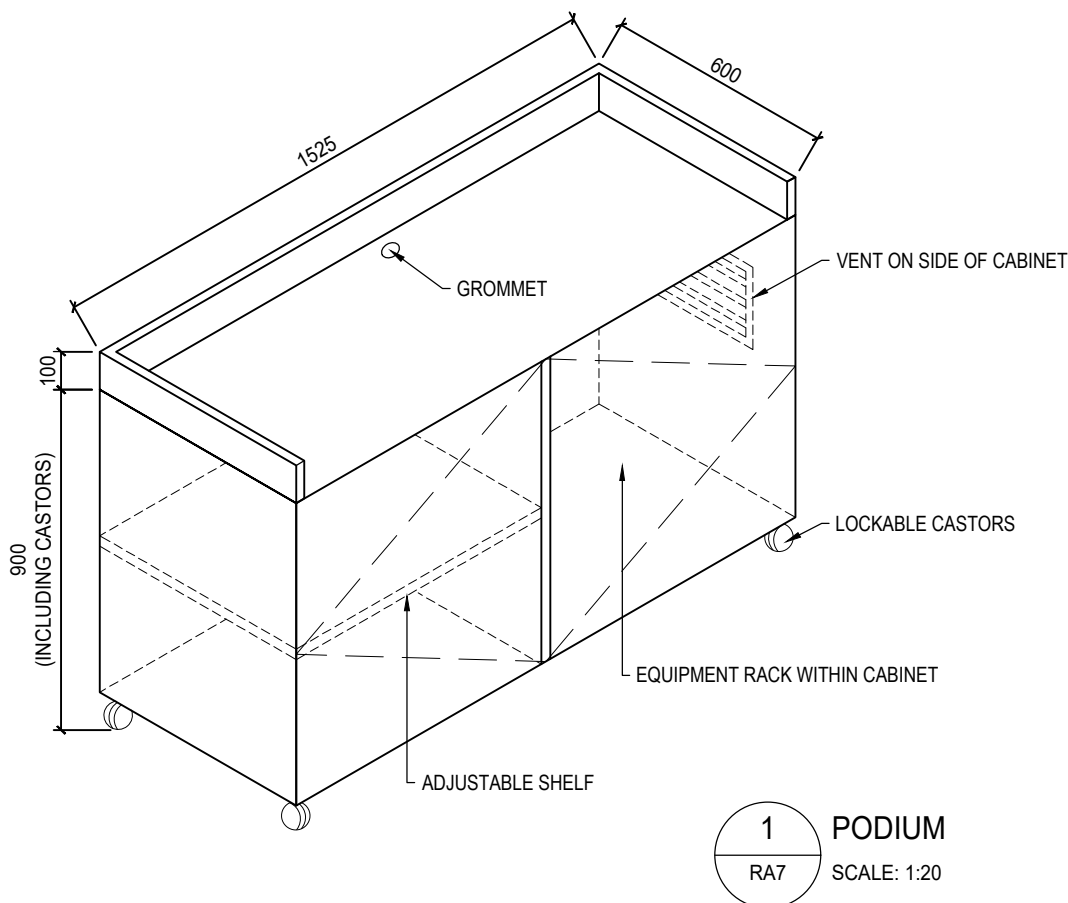
- .1 SECTION 01 62 00 – Product Exchange Procedures
  - .1 **Add** specification section.
- .2 SECTION 10 74 46 – Window Wells
  - .1 **Add** specification section. Refer to Drawing RA1.5 for location.
- .3 SECTION 26 09 23.01 – Metering and Switchboard Instruments
  - .1 **Add** specification section.
- .4 SECTION 26 52 00 – Emergency Lighting
  - .1 **Revise** Paragraph 2.1.4 to read “operating time: 60 minutes”.

## 1.3 CHANGES TO DRAWINGS

- .1 DRAWING RA1.1 Podium
  - .1 Diagram provides further clarification to keynote 17 on Sheet A4.
- .2 DRAWING RA1.2 Floor Plan Modifications
  - .1 **Add** Room D476D. Relocate D476C and rename as D476D. Hardware type to remain as indicated in Door Schedule.
  - .2 Wall types and locations have been modified to suit door relocation.
- .3 DRAWING RA1.3 Ceiling Modifications
  - .1 **Revise** extent of acoustic ceiling tile and drywall ceilings as indicated.

- .2 Refer to Mechanical, Electrical and Telecommunications drawings for modifications to other systems.
- .4 DRAWING RA1.4 Finishes Modifications
  - .1 **Revise** extent of carpet types and paint colours as indicated.
- .5 DRAWING RA1.5 Partial Basement Plan
  - .1 **Add** Area Well on North side of building to accommodate Mechanical systems.
- .6 DRAWINGS M6R1 – HVAC Plan
  - .1 **Add** fire damper in ductwork penetrating Room 483.
  - .2 **Revise** air transfers above Rooms 475 and 486.
  - .3 **Delete** air transfer, security bar, and fire damper in east corridor.
  - .4 **Add** fire damper and secure bar to existing duct in corridor crossing new W5 wall.
- .7 DRAWING E12 – Luminaire Schedule
  - .1 Refer to luminaire schedule. **Revise** Type G catalogue numbers as follows:
    - .1 Axis Lighting – BRLED-750-80-35-FL-S29-W-120-O(DALI)-1-DS
    - .2 Focal Point – FSM2L-FL-625LF-35K-1C-UNV-D11-XF1-WH-29FT
    - .3 A-Light – ACL5-29FT-LH-35-U-HE-G-W-D3(DALI)
- .8 DRAWING E5 – Lighting Plan
  - .1 **Revise** lighting in Room 476D to match attached drawing E5R1.
- .9 DRAWING E7 – Life Safety Plan
  - .1 **Revise** egress signage in Room 476D to match attached drawing E7R1.
- .10 DRAWING E13 – Lighting Control Schedule
  - .1 **Revise** lighting in room 476D to match attached drawing E5R1
  - .2 Refer to lighting control schedule. **Add** L25 to read as follows: Room: 476D; Luminaire type: A; Luminaire quantity: 2; Ceiling mount PIR occupancy sensor; Dali bus number 3; circuit number 24-U1-A/4; zone operation 2.
  - .3 **Revise** Zone operation for L24 from 1 to 2.
- .11 DRAWING T3 – Telecommunications Layout
  - .1 **Revise** intercom in Room 476D to match attached drawing T3R1.
- .12 DRAWING T4 – Access Control/Intrusion Alarm
  - .1 **Revise** access control/intrusion in Room 476D to match attached drawing T4R1.
- .13 DRAWING T5 – Sound Masking Layout
  - .1 **Revise** sound masking paging speaker for Room 476D to match attached drawing T5R1.

**END OF ADDENDUM NUMBER NO. 1**

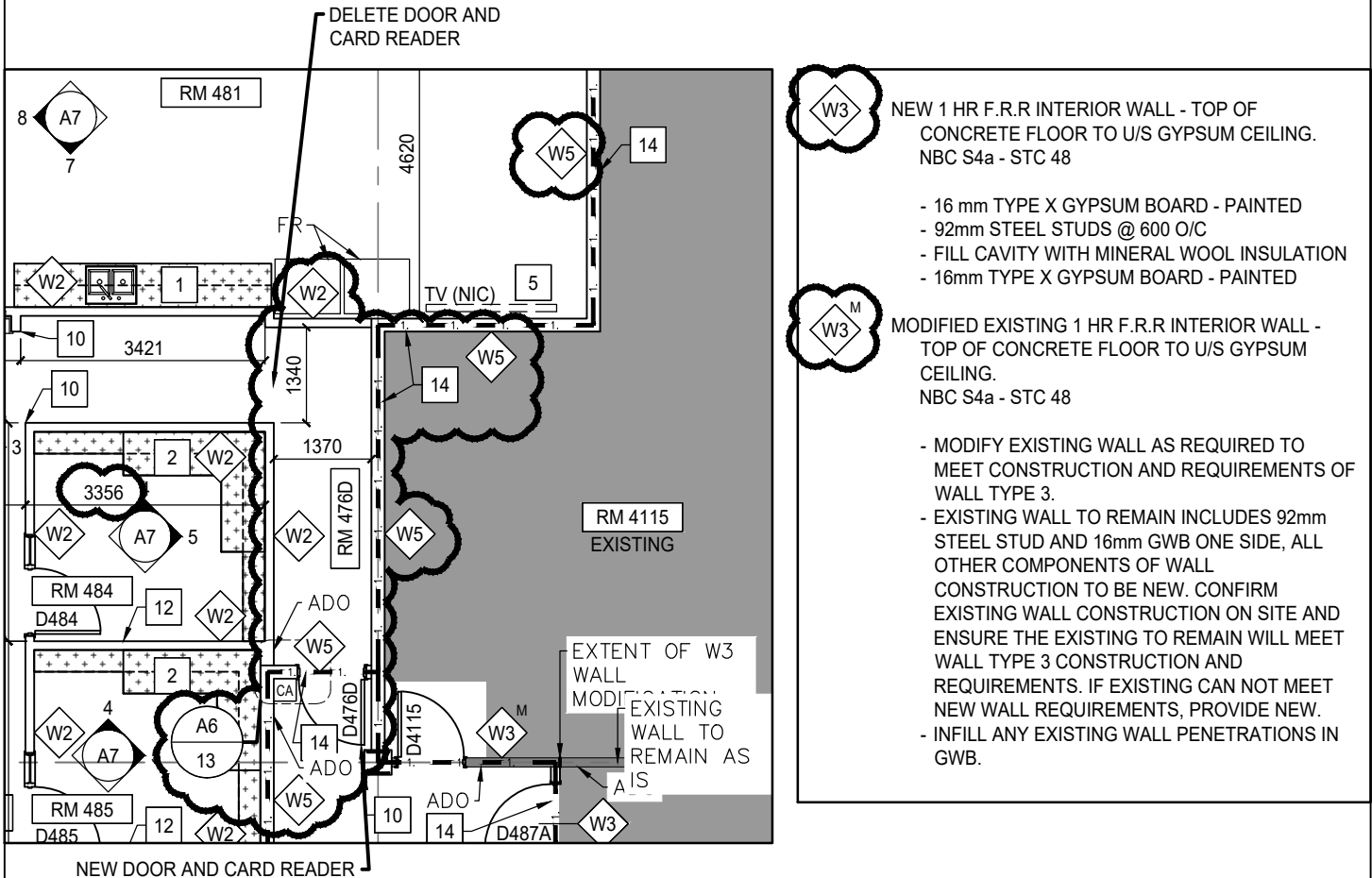


NOTES:

1. PODIUM DESCRIBED AND LOCATED IN DRAWING A4, KEYNOTE 17.

**DO NOT SCALE DRAWINGS**

Project title/Titre du projet <b>Interior Alterations - Suite 483 Renovation &amp; Fit Up</b> <b>1091 Portage Avenue</b> <b>Winnipeg, Manitoba</b>		Drawing title/Titre du dessin <b>NEW ELEVATION FOR SHEET A7</b> <b>PODIUM</b> <b>ADDENDA 1</b>	
Approved by/Approuvé par N/A	PWGSC Project Manager/Administrateur de Projets TPSGC Mark Arrojado	Scale/Echelle As Noted	
Designed by/Concept par TS	PWGSC, Architectural and Engineering Resources Manager/ Ressources Architectural et de Directeur d'Ingénierie, TPSGC	Date/Date 2018-07-03	
Drawn by/Dessiné par HA	Project No./No. du projet R.076524.002	Sheet/Feuille <b>1 of 4</b>	Revision/ Revision <b>RA1.1</b>



# 1 FLOOR PLAN MODIFICATIONS

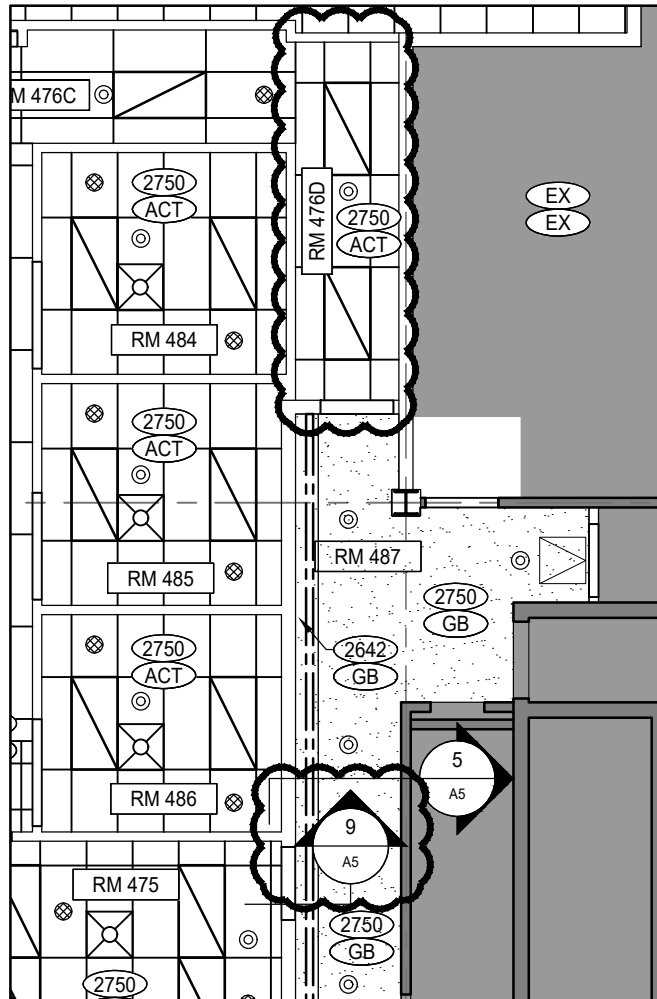
RA4 SCALE: 1:100

## GENERAL NOTES:

1. REVISE WALL TYPES AS INDICATED WITHIN REVISION BUBBLES.
2. REVISE WALL TYPE W3 AND W3(M).
3. ADD NEW CORRIDOR "ROOM 476D"
4. DELETE DOOR D476C AND CARD READER.
5. ADD D476D AND CARD READER IN NEW CORRIDOR 476D.
6. ADD ADO ON BOTH SIDES OF DOOR D476D AS INDICATED.
7. NEW LOCATION FOR DETAIL 13/A6. CARD READER LOCATION IN DETAIL 12/A6 TO BE REVISED.
8. NEW 1 HR FRR SEPARATION TO BE REVISED, DICTATED BY WALL TYPE REVISIONS.
9. MILLWORK ALONG WEST WALL (ELEVATION 4/A7) IN ROOM 484 TO INCREASE BASED ON NEW WALL DEPTH.

## DO NOT SCALE DRAWINGS

Project title/Titre du projet <b>Interior Alterations - Suite 483 Renovation &amp; Fit Up</b> <b>1091 Portage Avenue</b> <b>Winnipeg, Manitoba</b>		Drawing title/Titre du dessin <b>REVISIONS TO SHEET A4</b> <b>PARTIAL 4th FLOOR PLAN</b> <b>ADDENDUM 1</b>	
Approved by/Approuvé par <b>N/A</b>	PWGSC Project Manager/Administrateur de Projets TPSGC <b>Mark Arrojado</b>	Scale/Echelle <b>As Noted</b>	
Designed by/Concept par <b>TS</b>	PWGSC, Architectural and Engineering Resources Manager/ Ressources Architectural et de Directeur d'Ingénierie, TPSGC	Date/Date <b>2018-07-03</b>	
Drawn by/Dessiné par <b>HA</b>	Project No./No. du projet <b>R.076524.002</b>	Sheet/Feuille <b>2 of 5</b>	Revision/ Revision <b>RA1.2</b>



1

## CEILING MODIFICATIONS

RA5

SCALE 1:100

### NOTES:

1. DELETE GYPSUM CEILING AND COVE LIGHTING IN AREA DEFINED ABOVE. ADD ACT AND LIGHT FIXTURES AS SHOWN.
2. NEW LOCATION FOR DETAIL 9/A5.

## DO NOT SCALE DRAWINGS

### Project title/Titre du projet

Interior Alterations - Suite 483 Renovation & Fit Up  
1091 Portage Avenue  
Winnipeg, Manitoba

### Drawing title/Titre du dessin

REVISIONS TO SHEET A5  
CEILING MODIFICATIONS  
ADDENDUM 1

### Approved by/Approuvé par

N/A

PWGSC Project Manager/Administrateur  
de Projets TPSGC Mark Arrojado

### Scale/Echelle

As Noted

### Designed by/Concept par

TS

PWGSC, Architectural and Engineering Resources Manager/  
Ressources Architectural et de Directeur d'ingénierie,  
TPSGC

### Date/Date

2018-07-03

### Drawn by/Dessiné par

HA

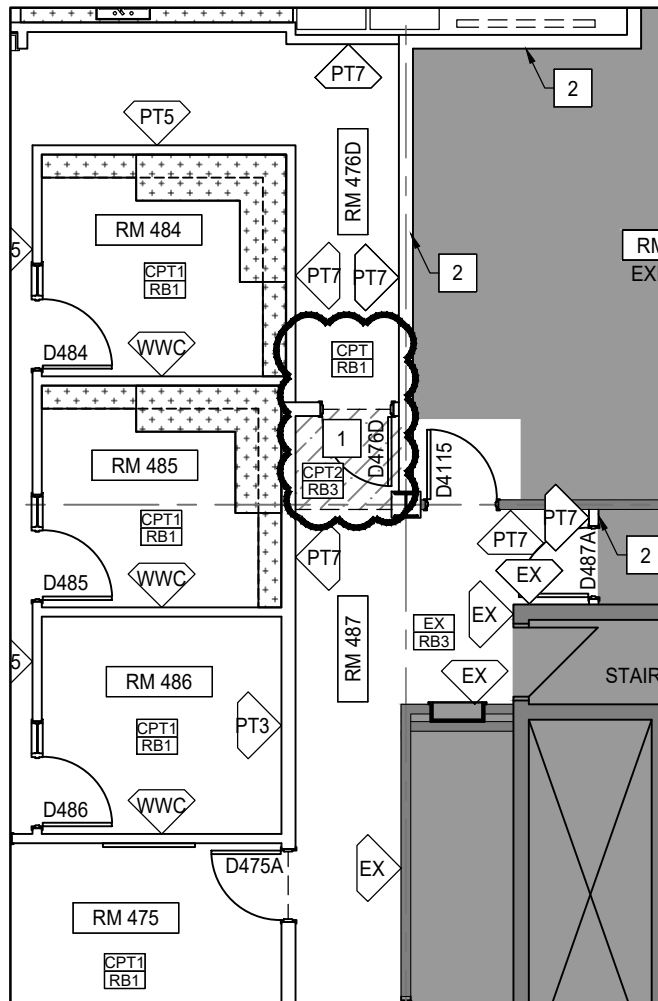
Project No./No. du  
projet R.076524.002

### Sheet/Feuille

3 of 5

### Revision/Revision

RA1.3



## FINISHES MODIFICATIONS

SCALE: 1:100

### NOTES:

1. REVISE EXTENT OF CLIENT PROVIDED CARPET, KEYNOTE 1.

## DO NOT SCALE DRAWINGS

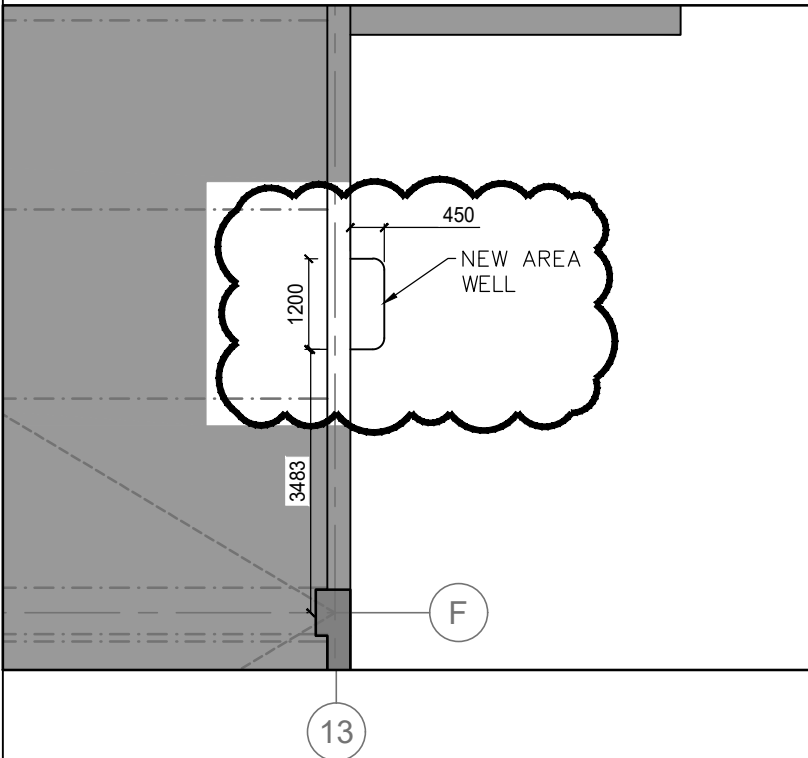
Project title/Titre du projet

**Interior Alterations - Suite 483 Renovation & Fit Up**  
**1091 Portage Avenue**  
**Winnipeg, Manitoba**

Drawing title/Titre du dessin

**REVISIONS TO SHEET A4.1**  
**FINISHES MODIFICATIONS**  
**ADDENDUM 1**

Approved by/Approuvé par	N/A	PWGSC Project Manager/Administrateur de Projets TPSGC <b>Mark Arrojado</b>	Scale/Echelle	<b>As Noted</b>
Designed by/Concept par	TS	PWGSC, Architectural and Engineering Resources Manager/ Ressources Architectural et de Directeur d'Ingénierie, TPSGC	Date/Date	<b>2018-07-03</b>
Drawn by/Dessiné par	HA	Project No./No. du projet <b>R.076524.002</b>	Sheet/Feuille	<b>4 of 5</b>
			Revision/Revision	<b>RA1.4</b>



**1** AREA WELL LOCATION  
RA5 SCALE: 1:100

GENERAL NOTES:

1. REMOVE EXISTING SIDEWALK IN LOCATION OF NEW AREA WELL.
2. DEPTH TO BE DETERMINED BY LOCATION OF MECHANICAL LINES.
3. INSTALL AREA WELL FLUSH WITH EXISTING SIDEWALK.
4. PATCH AND REPAIR EXISTING SIDEWALK AS NEEDED AROUND EDGE OF NEW AREA WELL.
5. PROVIDE NEW METAL GRATE COVER, FLUSH WITH SIDEWALK SURFACE.

**DO NOT SCALE DRAWINGS**

Project title/Titre du projet

**Interior Alterations - Suite 483 Renovation & Fit Up  
1091 Portage Avenue  
Winnipeg, Manitoba**

Drawing title/Titre du dessin

**REVISIONS TO SHEET A4  
PARTIAL BASEMENT PLAN  
ADDENDUM 1**

Approved by/Approuvé par

N/A

PWGSC Project Manager/Administrateur  
de Projets TPSGC **Mark Arrojado**

Scale/Echelle

**As Noted**

Designed by/Concept par

TS

PWGSC, Architectural and Engineering Resources Manager/  
Ressources Architectural et de Directeur d'Ingénierie,  
TPSGC

Date/Date

**2018-07-03**

Drawn by/Dessiné par

HA

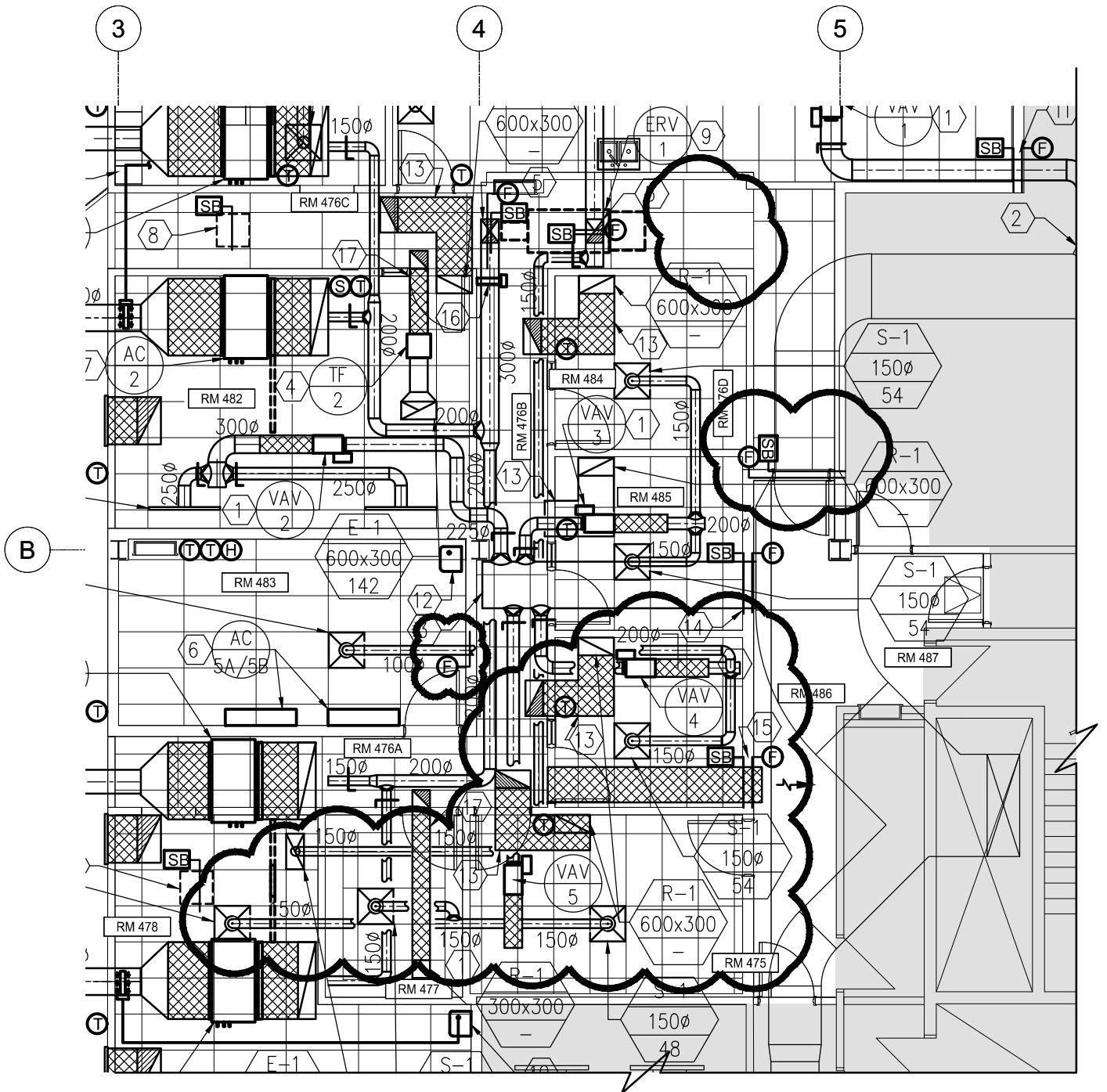
Project No./No. du  
projet **R.076524.002**

Sheet/Feuille

**5 of 5**

Revision/ Revision

**RA1.5**



1 PARTIAL FOURTH FLOOR NEW HVAC LAYOUT  
M6 1:100

Project title/Titre du projet

**Interior Alterations - Suite 483 Renovation & Fit Up**  
**1091 Portage Avenue**  
**Winnipeg, Manitoba**

Drawing title/Titre du dessin

**REVISIONS TO SHEET M6**  
**PARTIAL HVAC PLAN**  
**ADDENDA 1**

Approved by/Approuvé par

N/A

PWGSC Project Manager/Administrateur  
de Projets TPSGC Mark Arrojado

Scale/Echelle

As Noted

Designed by/Concept par

DH

PWGSC, Architectural and Engineering Resources Manager/  
Ressources Architectural et de Directeur d'Ingénierie,  
TPSGC

Date/Date

2018-07-11

Drawn by/Dessiné par

IS

Project No./No. du  
projet R.076524.002

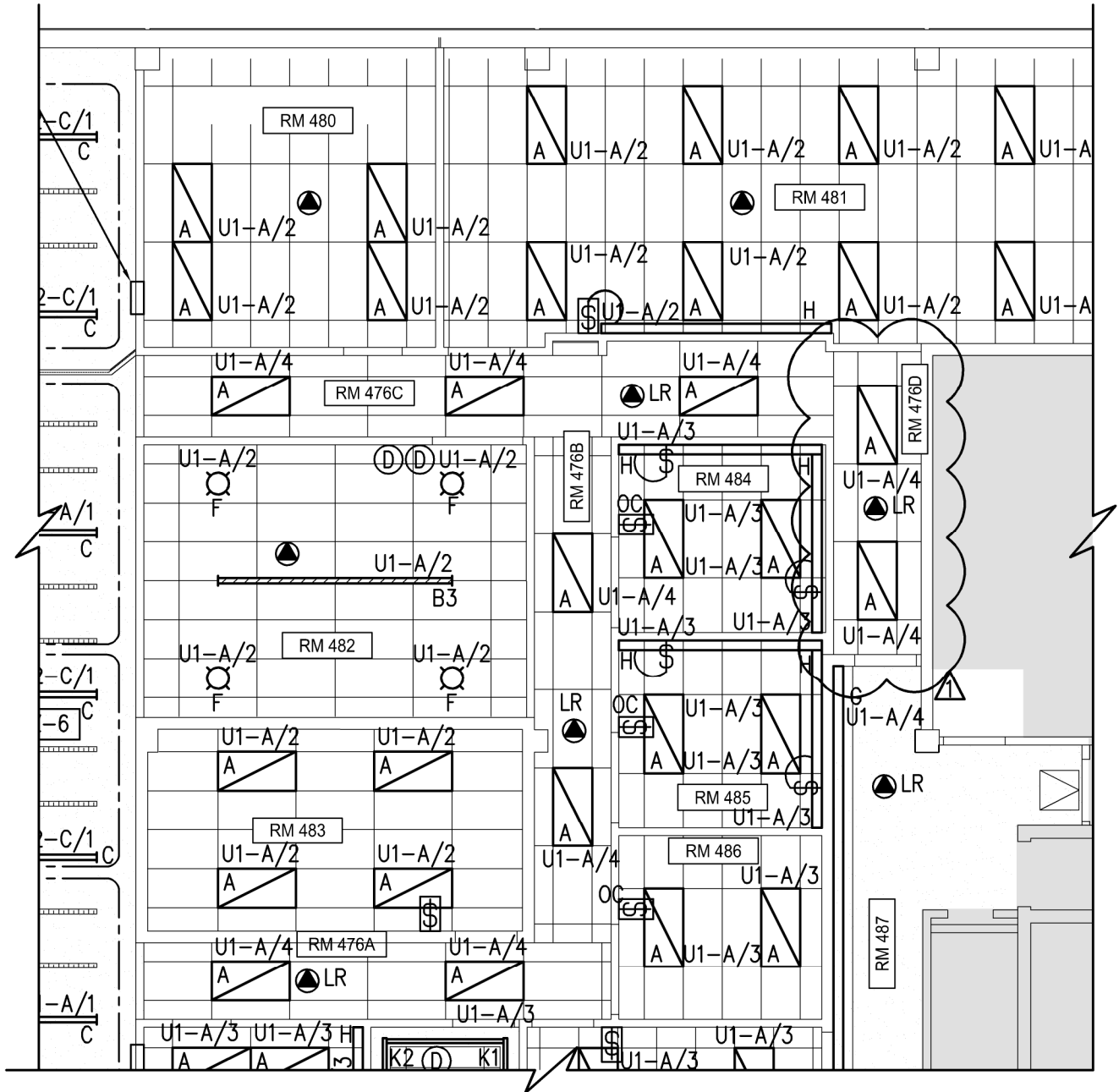
Sheet/Feuille

1 of 1

Revision/Revision

M6R1





1  
E5R1

FOURTH FLOOR LIGHTING PLAN  
1:100

Project title/Titre du projet

Interior Alterations - Suite 483 Renovation & Fit Up  
1091 Portage Avenue  
Winnipeg, Manitoba

Drawing title/Titre du dessin

REVISIONS TO SHEET E5R1  
FOURTH FLOOR LIGHTING PLAN  
ADDENDA 1

Approved by/Approuvé par

HCC

PWGSC Project Manager/Administrateur  
de Projets TPSGC Mark Arrojado

Scale/Echelle

As Noted

Designed by/Concept par

PL

PWGSC, Architectural and Engineering Resources Manager/  
Ressources Architectural et de Directeur d'ingénierie,  
TPSGC

Date/Date

2018-07-11

Drawn by/Dessiné par

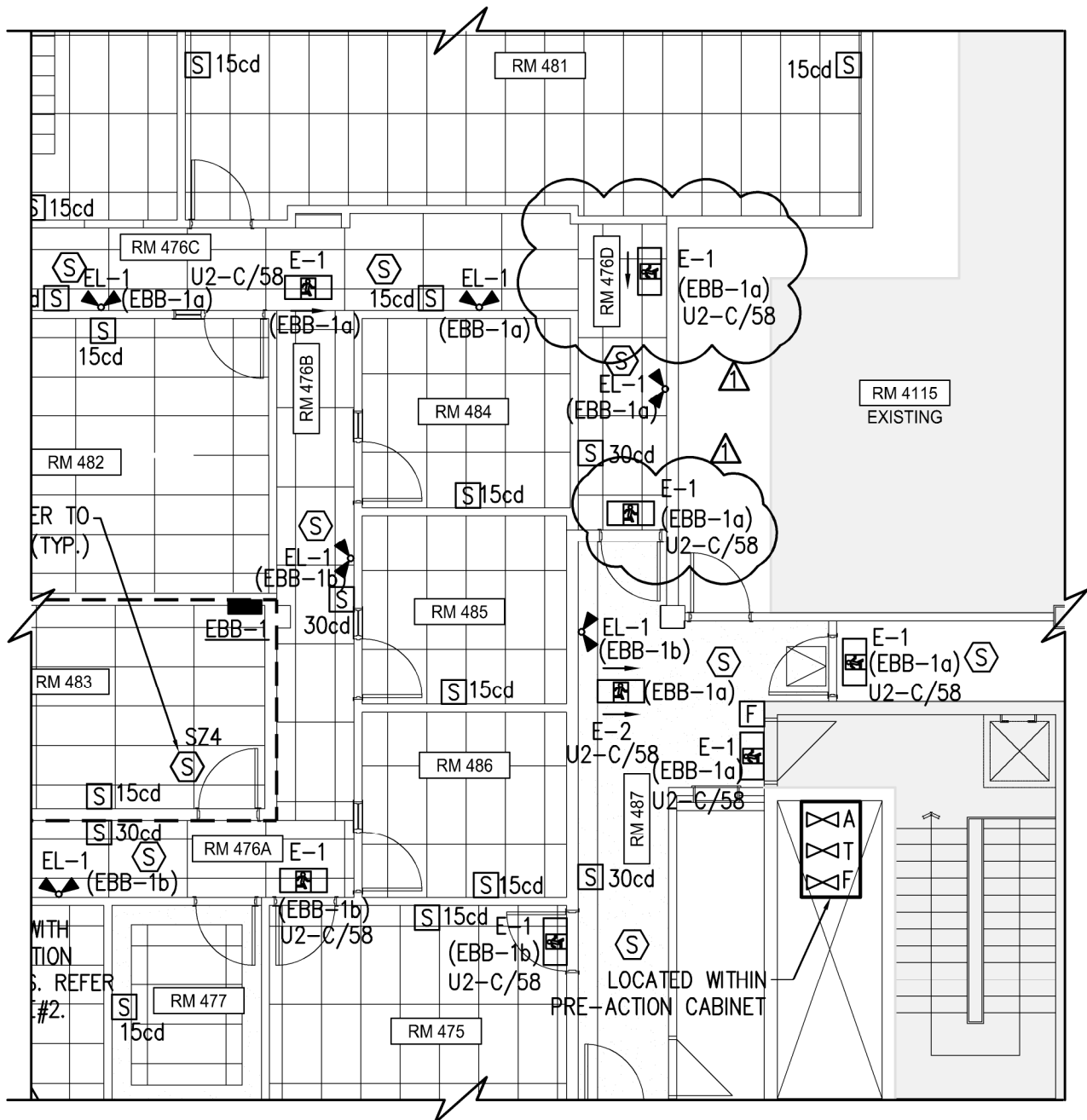
RD

Project No./No. du  
projet R.076524.002

Sheet/Feuille

1 OF 1

Revision/Revision  
E5R1



1  
E7R1

# FOURTH FLOOR LIFE SAFETY SYSTEMS PLAN

1:100

Project title/Titre du projet

**Interior Alterations - Suite 483 Renovation & Fit Up**  
**1091 Portage Avenue**  
**Winnipeg, Manitoba**

Drawing title/Titre du dessin

**REVISIONS TO SHEET E7R1**  
**FOURTH FLOOR LIFE SAFETY SYSTEMS PLAN**  
**ADDENDA 1**

Approved by/Approuvé par

HCC

PWGSC Project Manager/Administrateur  
de Projets TPSGC **Mark Arrojado**

Scale/Echelle

As Noted

Designed by/Concept par

PL

PWGSC, Architectural and Engineering Resources Manager/  
Ressources Architectural et de Directeur d'Ingénierie,  
TPSGC

Date/Date

2018-07-11

Drawn by/Dessiné par

RD

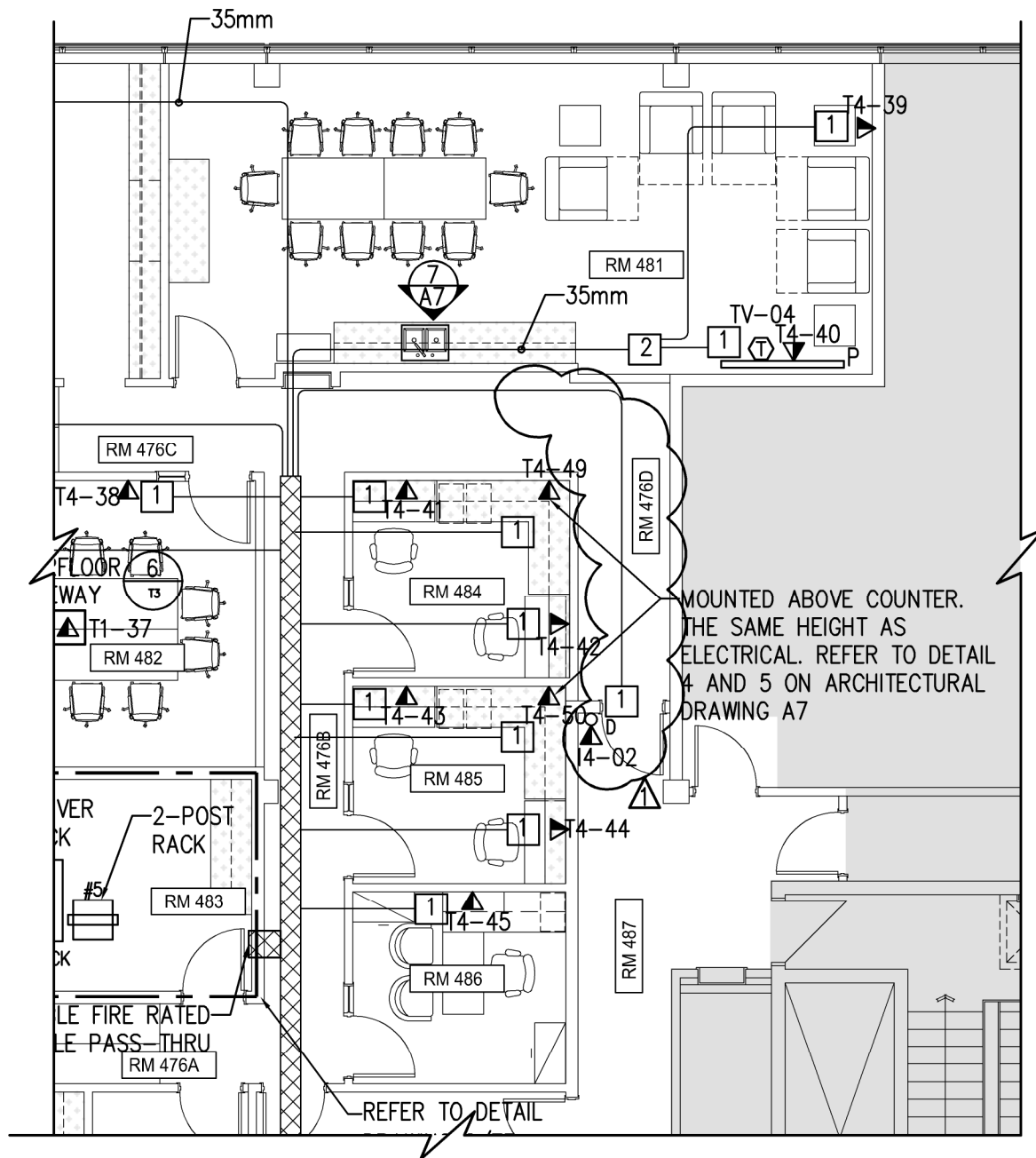
Project No./No. du  
projet **R.076524.002**

Sheet/Feuille

**1 OF 1**

Revision/Revision

**E7R1**



NEW TELECOMMUNICATIONS LAYOUT  
1:100

Project title/Titre du projet

**Interior Alterations - Suite 483 Renovation & Fit Up**  
**1091 Portage Avenue**  
**Winnipeg, Manitoba**

Drawing title/Titre du dessin

**REVISIONS TO SHEET T3R1**  
**NEW TELECOMMUNICATIONS LAYOUT**  
**ADDENDA 1**

Approved by/Approuvé par

KO

PWGC Project Manager/Administrateur  
de Projets TPSGC **Mark Arrojado**

Scale/Echelle

As Noted

Designed by/Concept par

KO

PWGC, Architectural and Engineering Resources Manager/  
Ressources Architectural et de Directeur d'Ingénierie,  
TPSGC

Date/Date

2018-07-11

Drawn by/Dessiné par

RD

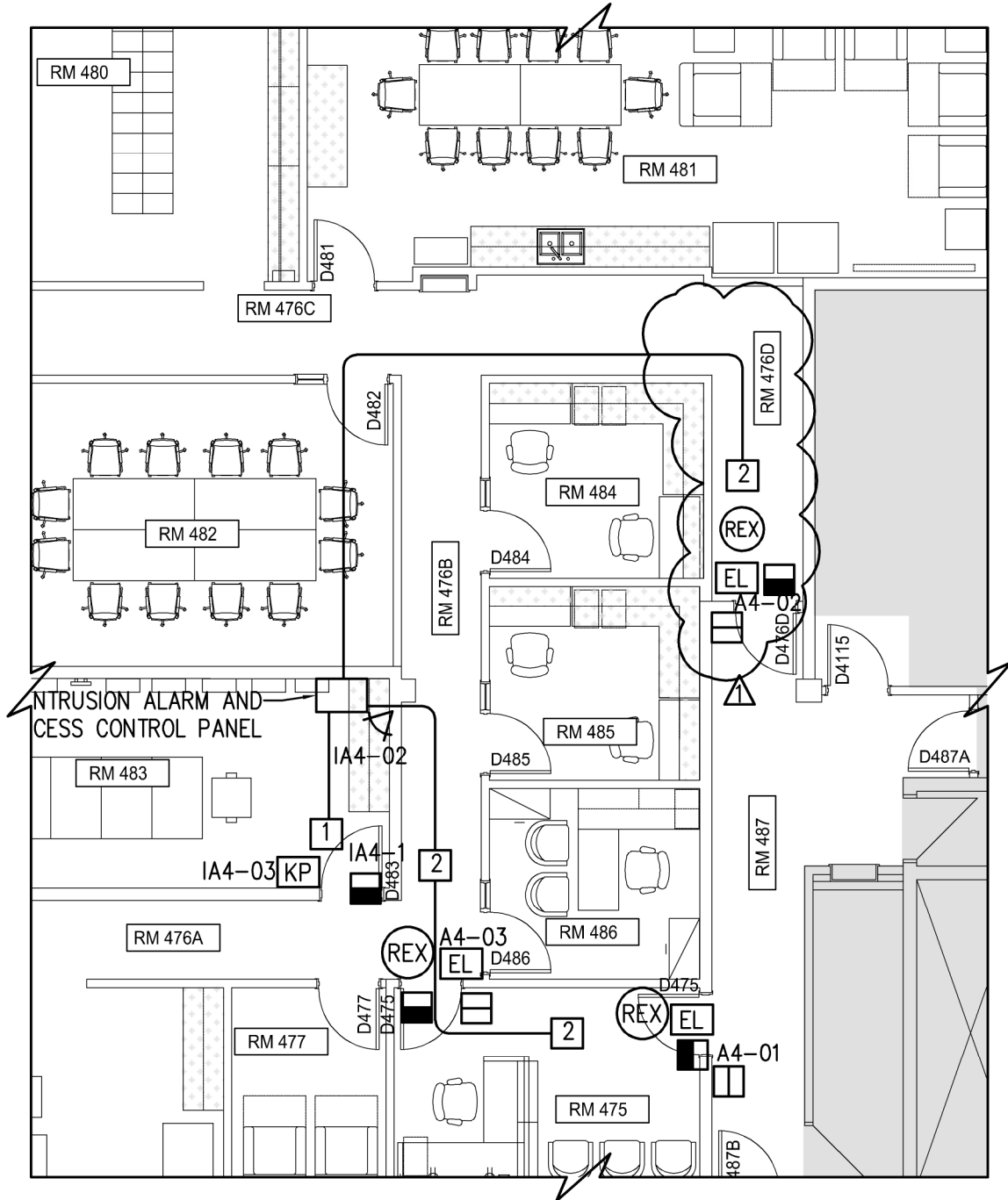
Project No./No. du  
projet **R.076524.002**

Sheet/Feuille

**1 OF 1**

Revision/ Revision

**T3R1**



 **1** NEW ACCESS CONTROL/INTRUSION LAYOUT  
T4R1 1:100

Project title/Titre du projet

**Interior Alterations - Suite 483 Renovation & Fit Up**  
**1091 Portage Avenue**  
**Winnipeg, Manitoba**

Drawing title/Titre du dessin

**REVISIONS TO SHEET T4R1**  
**NEW ACCESS CONTROL/INTRUSION LAYOUT**  
**ADDENDA 1**

Approved by/Approuvé par

KO

PWGC Project Manager/Administrateur  
de Projets TPSGC **Mark Arrojado**

Scale/Echelle

**As Noted**

Designed by/Concept par

KO

PWGC, Architectural and Engineering Resources Manager/  
Ressources Architectural et de Directeur d'Ingénierie,  
TPSGC

Date/Date

**2018-07-11**

Drawn by/Dessiné par

RD

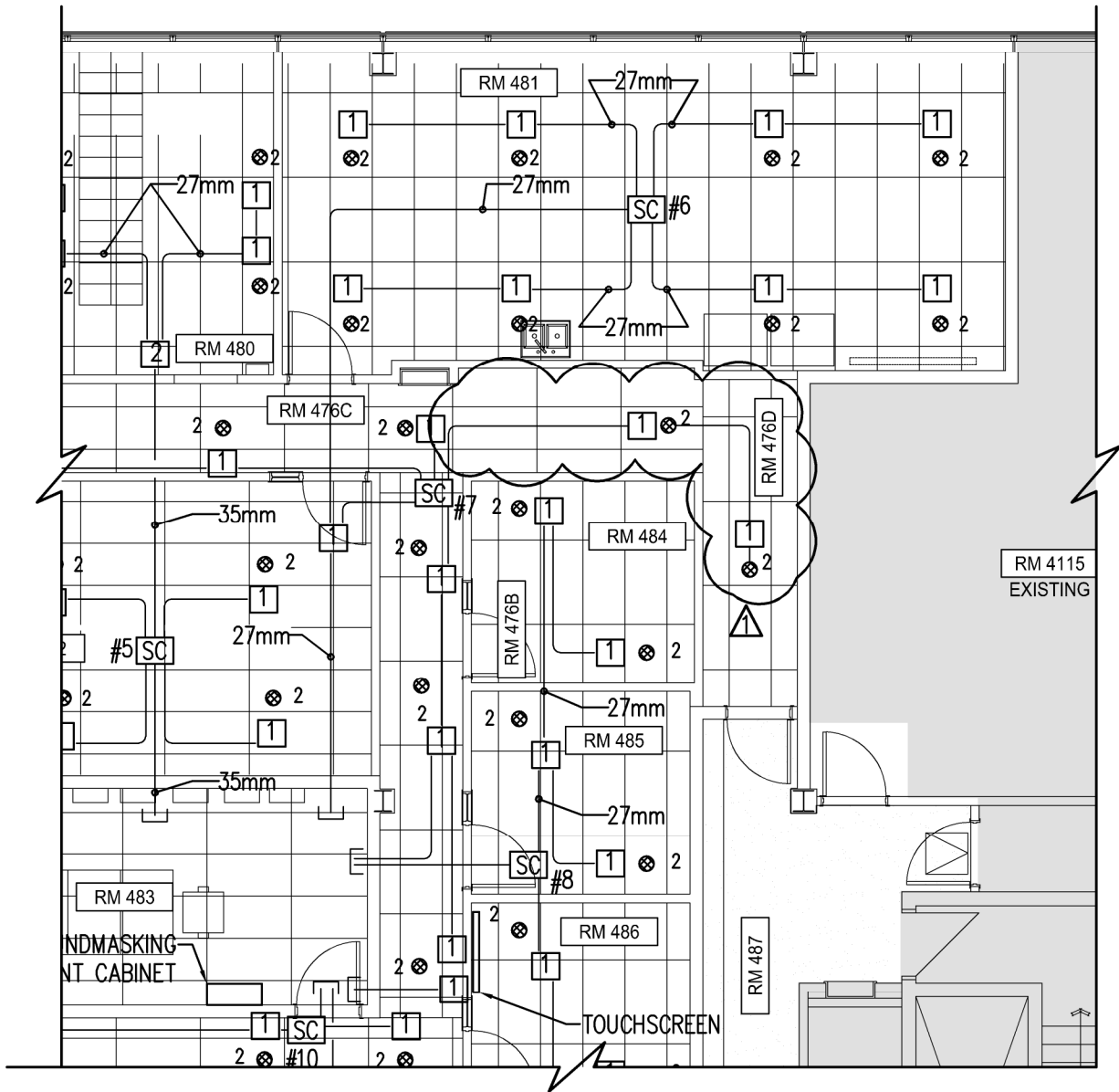
Project No./No. du  
projet **R.076524.002**

Sheet/Feuille

**1 OF 1**

Revision/Revision

**T4R1**



NEW SOUNDMASKING PLAN  
1:100

Project title/Titre du projet

Interior Alterations - Suite 483 Renovation & Fit Up  
1091 Portage Avenue  
Winnipeg, Manitoba

Drawing title/Titre du dessin

REVISIONS TO SHEET T5R1  
NEW SOUNDMASKING PLAN  
ADDENDA 1

Approved by/Approuvé par

KO

PWGC Project Manager/Administrateur  
de Projets TPSGC Mark Arrojado

Scale/Echelle

As Noted

Designed by/Concept par

KO

PWGC, Architectural and Engineering Resources Manager/  
Ressources Architectural et de Directeur d'ingénierie,  
TPSGC

Date/Date

2018-07-11

Drawn by/Dessiné par

RD

Project No./No. du  
projet R.076524.002

Sheet/Feuille

1 OF 1

Revision/ Revision  
T5R1

**Part 1        General**

**1.1        SUBSTITUTIONS**

- .1 Departmental Representative will consider requests for Substitutions during Bidding period for specification sections with listed acceptable products.
- .2 Document each request with complete data substantiating compliance of proposed Substitution with Contract Documents.
- .3 Request constitutes a representation that the Bidder:
  - .1 Has investigated proposed Product and determined that it meets or exceeds the quality level of the specified Product.
  - .2 Will provide the same warranty for the Substitution as for the specified Product.
  - .3 Will coordinate installation and make changes to other Work that may be required for the Work to be complete with no additional cost to Owner.
  - .4 Waives claims for additional costs or time extension that may subsequently become apparent.
  - .5 Will reimburse Departmental Representative for review or redesign services associated with re-approval by authorities.
- .4 Substitutions will not be considered when they are indicated or implied on Shop Drawing or product data submittals, without separate written request, or when acceptance will require revision to the Contract Documents.
- .5 Substitution submissions must identify the effect on adjacent or related components. Burden of proof of identifying impact on related work is on proposer.
- .6 Departmental Representative reserves the right to accept or reject any proposed products and execution and reserves the right to disclose or not to disclose reasons for such rejection.
- .7 Substitution Submittal Procedure:
  - .1 Submit three (3) copies of request for Substitution for consideration. Limit each request to one (1) proposed Substitution.
  - .2 Submit samples, product literature, photographs, and specifications to completely describe the products and execution proposed and to enable the Consultant to properly evaluate the proposal.
  - .3 Submit MSDS, product data, and certified test results attesting to the proposed Product equivalence. Burden of proof is on proposer.
  - .4 Departmental Representative will evaluate the request and advise in writing.
  - .5 Specific requirements for requests during Bid Period:
    - .1 The Departmental Representative will notify Bidders in writing of decision to accept or reject request.
    - .2 Submit requests for approval of products and execution, in writing, at least 7 (seven) days before bid closing, to the Departmental Representative.

**END OF SECTION**

**Part 1            General**

**1.1                REFERENCES**

- .1    ASTM International
  - .1    ASTM A653/A653M-13, Standard Specification for Steel Sheet, Zinc-Coated (Galvanized) or Zinc-Iron Alloy-Coated (Galvannealed) by the Hot-Dip Process.

**1.2                SUBMITTALS**

- .1    Submit in accordance with Section 01 33 00 - Submittal Procedures.
- .2    Product Data:
  - .1    Submit manufacturer's instructions, printed product literature, and data sheets for window wells. Include product characteristics, performance criteria, physical size, and finish.

**1.3                DELIVERY, STORAGE, AND HANDLING**

- .1    Deliver, store, and handle materials in accordance with Section 01 61 00 - Common Product Requirements and with manufacturer's written instructions.
- .2    Deliver materials to site in original factory packaging, labelled with manufacturer's name and address.

**Part 2            Products**

**2.1                WINDOW WELLS**

- .1    Steel sheet, 1.6 mm thick (16 gauge), corrugated; galvanized to ASTM A653, G90 thickness; formed to shape with roll-formed bead or hem at top edge. Complete with flanges with pre-punched holes for attachment to foundation wall.

**Part 3            Execution**

**3.1                EXAMINATION**

- .1    Verify conditions are acceptable for window well installation in accordance with manufacturer's written instructions.
  - .1    Visually inspect substrate.
  - .2    Inform Departmental Representative of unacceptable conditions.
  - .3    Proceed with installation only after unacceptable conditions have been remedied.

**3.2            INSTALLATION**

- .1        Install window well at location indicated.
- .2        Attach solidly to foundation wall with fasteners as recommended by window well manufacturer.
- .3        Install window well square, plumb, and straight without twist or distortion.

**3.3            CLEANING**

- .1        Progress Cleaning: Clean in accordance with Section 01 74 11 - Cleaning.
- .2        Leave Work area clean at end of each day.
- .3        Final Cleaning: Upon completion remove surplus materials, rubbish, tools and equipment in accordance with Section 01 74 11 - Cleaning.
- .4        Waste Management: Remove waste materials in accordance with Section 01 74 21 - Construction/Demolition Waste Management and Disposal.

**3.4            PROTECTION**

- .1        Protect installed products and components from damage during construction.
- .2        Repair damage to adjacent materials caused by window well installation.

**END OF SECTION**



## **PART 1 GENERAL**

### **1.1 Related Requirements**

- .1 This Section covers items common to Sections of Divisions 26, 27 and 28. These sections supplement requirements of Division 1.

### **1.2 Reference Standards**

- .1 American National Standards Institute (ANSI)
  - .1 ANSI C39.1-1981, Requirements, Electrical Analog Indicating Instruments.
- .2 CSA International
  - .1 CAN3-C17-M84 (R2008), Alternating - Current Electricity Metering.

### **1.3 Action And Informational Submittals**

- .1 Submit in accordance with Section 01 33 00 - Submittal Procedures.
- .2 Product Data:
  - .1 Submit manufacturer's instructions, printed product literature and data sheets for metering and switchboard instruments and include product characteristics, performance criteria, physical size, finish and limitations.
  - .2 Include meter, outline dimensions, panel drilling dimensions and installation cutout template.

### **1.4 Delivery, Storage And Handling**

- .1 Deliver, store and handle materials in accordance with Section with manufacturer's written instructions and 01 61 00 - Common Product Requirements.
- .2 Delivery and Acceptance Requirements: deliver materials to site in original factory packaging, labelled with manufacturer's name and address.
- .3 Storage and Handling Requirements:
  - .1 Store materials in dry location, indoors, off ground and in accordance with manufacturer's recommendations in clean, dry, well-ventilated area.
  - .2 Store and protect metering and switchboard instruments from nicks, scratches, and blemishes.
  - .3 Replace defective or damaged materials with new.

## **PART 2 PRODUCTS**

### **2.1 Meter**

- .1 Electronic type.
- .2 To measure true line/phase/max/min RMS voltages and currents, neutral currents, frequency, harmonics, KW, KVAR, KVA, power factor, Peak Demand

and complete with Ethernet communication ports, communication software and modem.

- .3 System ready to permit both local (PC based) and remote monitoring by modem connection without additional equipment or modifications.
- .4 Meters to be used for Customer information.
- .5 The meters will be capable of remote communication utilizing a ethernet port installed in meter.
- .6 System to have backup storage power to key components so that no data is lost during power outages. The system shall continue to function after resumption of power. Data to be retained for 8500 hours with a 20 year shelf life.
- .7 System unit and have sufficient memory to record seven days of data without writing over recorded data in the event of a communications failure.
- .8 Failure of the building electrical normal power system shall not result in loss of date and will not require manual restarting of the metering system.
- .9 System to be fully solid state and compatible with all associated equipment and be supplied complete with all required current and potential transformers and communications software.
- .10 Polyphase, element energy meter: to CAN3-C17.
- .11 Combination energy and demand meter: to CAN3-C17.
- .12 Accuracy: Utility grade
- .13 Mounted in existing DS switchgear.
- .14 Allow for remote sensing.

## **2.2 Meter Socket**

- .1 Meter socket to be mounted internally to the existing DS switchgear.

## **PART 3 EXECUTION**

### **3.1 Examination**

- .1 Verification of Conditions: verify that conditions of substrate previously installed under other Sections or Contracts are acceptable for metering and switchboard instruments installation in accordance with manufacturer's written instructions.
  - .1 Visually inspect substrate in presence of Departmental Representative.
  - .2 Inform Departmental Representative of unacceptable conditions immediately upon discovery.
  - .3 Proceed with installation only after unacceptable conditions have been remedied and after receipt of written approval to proceed from Departmental Representative.

### **3.2 Metering Installation**

- .1 Make connections in accordance with diagrams.

- .2 Connect metre and instrument transformer cabinets to ground.

### **3.3 Field Quality Control**

- .1 Conduct tests in accordance with Section 26 05 00 - Common Work Results for Electrical and in accordance with manufacturer's recommendations.
- .2 Perform simulated operation tests with metering, instruments disconnected from permanent signal and other electrical sources.
- .3 Verify correctness of connections, polarities of meters, instruments, potential and current transformers, transducers, signal sources and electrical supplies.
- .4 Perform tests to obtain correct calibration.
- .5 Do not dismantle meters and instruments.

### **3.4 Cleaning**

- .1 Progress Cleaning: clean in accordance with Section 01 74 11 - Cleaning.
  - .1 Leave Work area clean at end of each day.
- .2 Final Cleaning: upon completion remove surplus materials, rubbish, tools and equipment in accordance with Section 01 74 11 - Cleaning.
- .3 Waste Management: separate waste materials for recycling reuse in accordance with Section 01 35 21 - LEED Requirements 01 74 21 - Construction/Demolition Waste Management and Disposal.
  - .1 Remove recycling containers and bins from site and dispose of materials at appropriate facility.

### **3.5 Protection**

- .1 Protect installed products and components from damage during construction.
- .2 Repair damage to adjacent materials caused by metering and switchboard instrument installation.

**END OF SECTION**