



Correctional Service
of Canada

Service Correctionnel
du Canada

LIST OF DRAWINGS

CIVIL

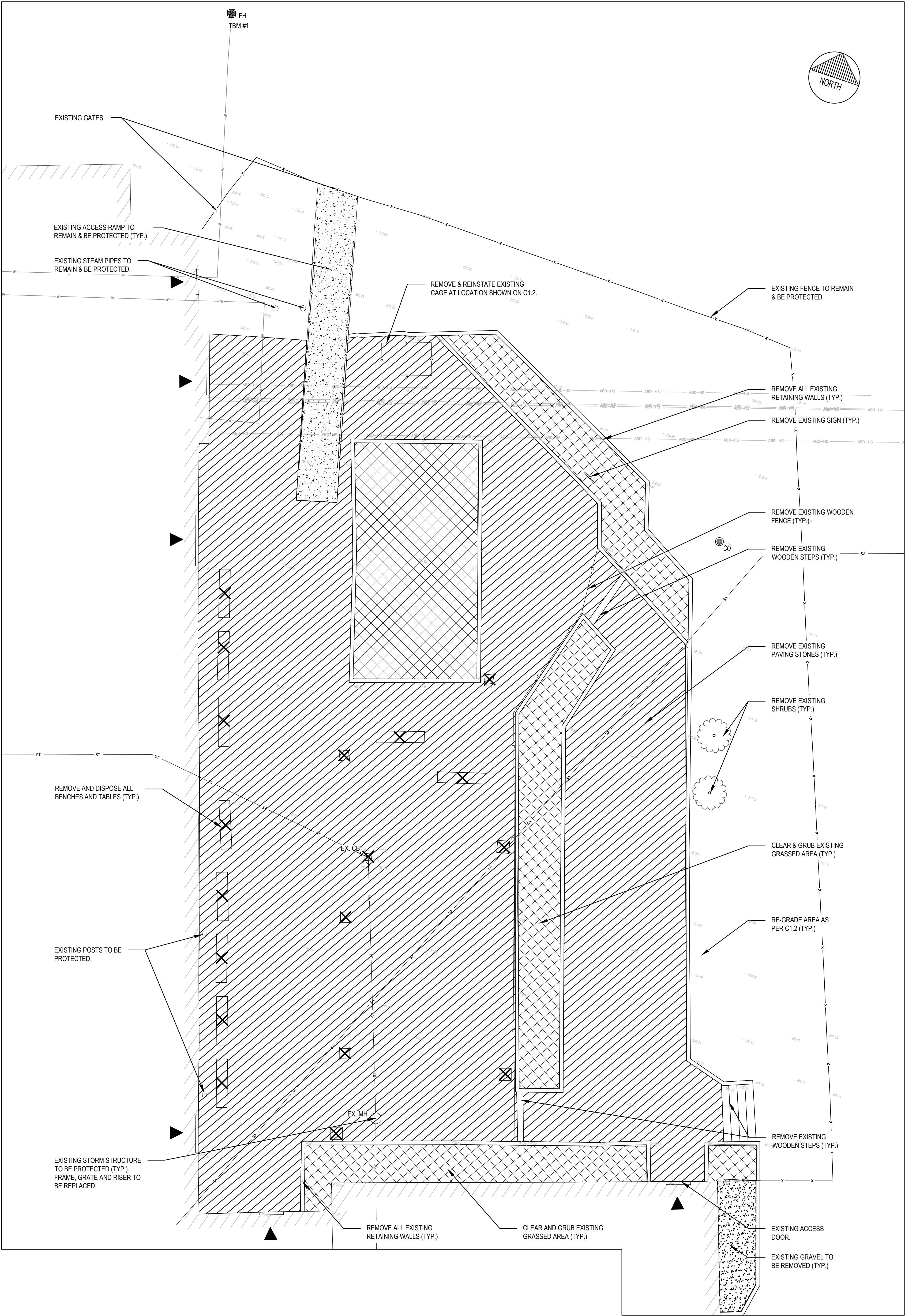
C1.1	REMOVALS
C1.2	SITE PLAN & GRADING
C1.3	DETAILS

CAMPBELLFORD, ONTARIO.

WARKWORTH INSTITUTION

WW27 COURTYARD REMEDIATION

CSC Proj. No.: 460-2716-0



NOTES:

1. CONTRACTOR TO VERIFY LOCATION OF ALL BURIED SERVICES PRIOR TO START OF CONSTRUCTION.
2. TOPOGRAPHIC INFORMATION PROVIDED BY WSP CANADA INC. (AUGUST, 2017).
3. ELEVATIONS ARE GEODETIC.
4. ALL DISTURBED AREAS TO BE REINSTATED USING 100mm OF TOPSOIL AND SOD UNLESS OTHERWISE NOTED.
5. CATCHBASIN AND MANHOLE TO BE LOCKED AS PER CSC TECHNICAL GUIDELINES.
6. GRADING TO BE A MAXIMUM OF 3H:1V.
7. CONTRACTOR TO REVIEW SITE ACCESS CONSTRAINTS.
8. CONTRACTOR TO REMOVE ALL BENCHES, GARBAGE CANS AND TABLES.

LEGEND:

- EXISTING INTERLOCK EDGE
- EXISTING STORM PIPE
- EXISTING METAL FENCE
- EXISTING WOODEN FENCE
- EXISTING WOODEN FENCE REMOVAL
- EXISTING WATERMAIN PIPE
- EXISTING SANITARY PIPE
- EXISTING STORM PIPE REMOVAL
- ABANDONED STEAM PIPE
- EXISTING CATCH BASIN
- EXISTING CATCH BASIN REMOVAL
- EXISTING HYDRANT
- EXISTING MANHOLE
- SITE TEMPORARY BENCH MARK
- EXISTING SANITARY CLEANOUT
- EXISTING SIGN
- EXISTING RETAINING WALL
- EXISTING RETAINING WALL REMOVAL
- EXISTING BUILDING
- PAVING STONE REMOVAL
- CLEARING & GRUBBING
- GRAVEL REMOVAL
- EXISTING CONCRETE
- EXISTING GRADES

TEMPORARY BENCH MARK

T.B.M. #	ELEVATION (m)	DESCRIPTION
1	201.13	TOP OF FLANGE OF FIRE HYDRANT



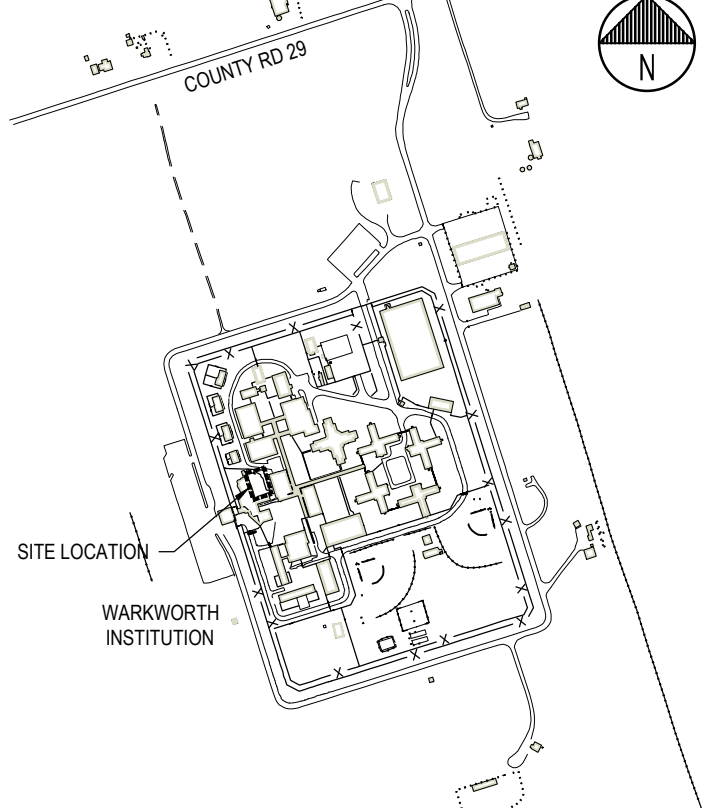
Correctional Service
of Canada
Service Correctionnel
du Canada

consultant



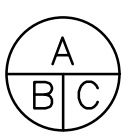
1224 GARDINERS ROAD, SUITE 201
KINGSTON, ONTARIO
CANADA K7P 0Z2
PHONE: 613-541-1271 FAX: 613-541-3523
WWW.WSPGROUP.COM

key plan



04		
03		
02		
01	ISSUED FOR TENDER	2018-06-15
revision		date

Do not scale drawings.
Verify all dimensions and conditions on site and immediately
notify the Departmental Representative of all discrepancies.



- A Detail No.
- B drawing no. - where detail required
- C drawing no. - where detailed

project title
titre du projet
CAMPBELLFORD ONTARIO
WARKWORTH INSTITUTION

WW27 COURTYARD REMEDIATION

drawing title
titre du dessin
REMOVALS

drawn by
dessiné par **MH**

designed by
conc par **MH/KC**

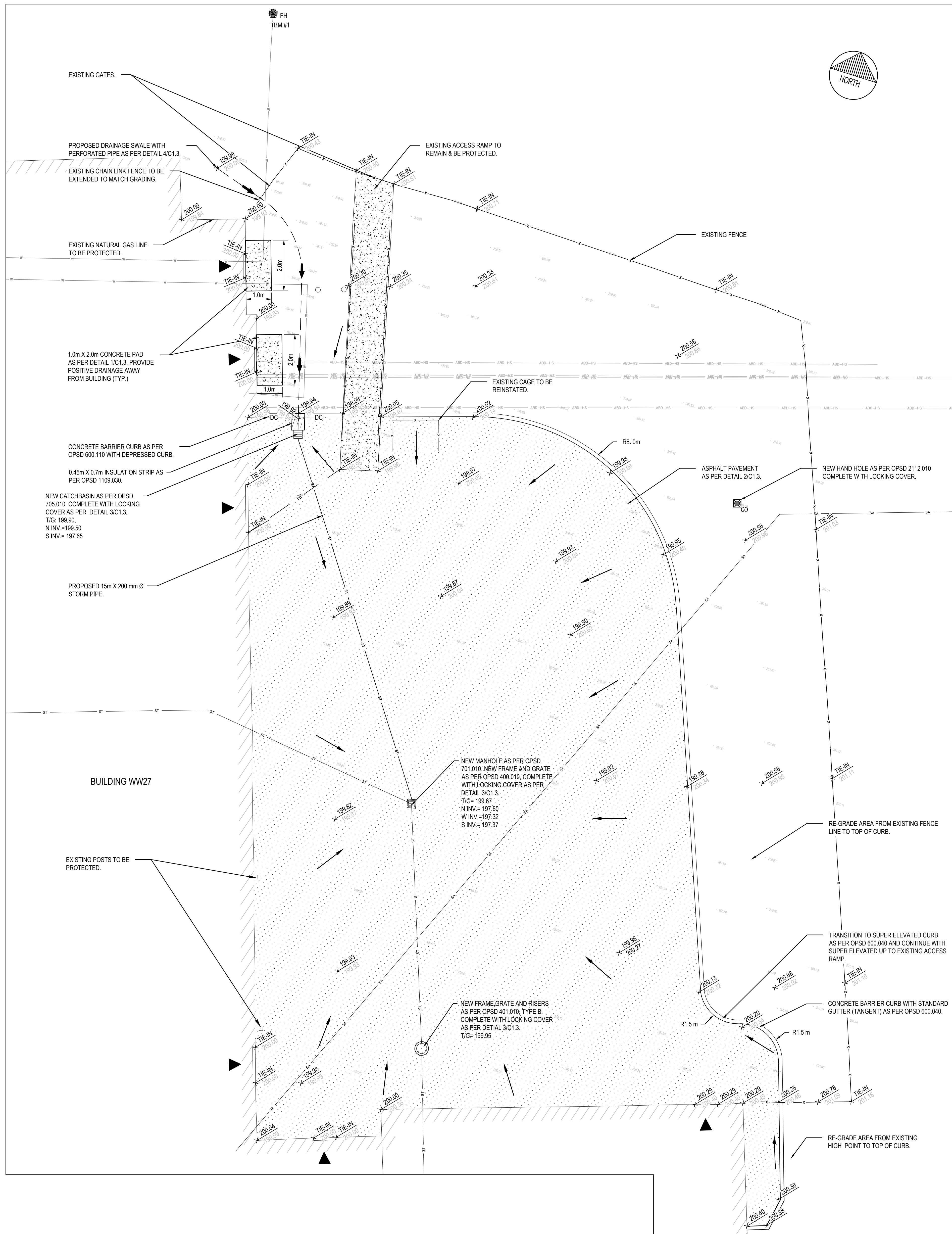
approved by
approuvé par **MF**

bld offre project manager
administrateur de projets

project date
date du projet **2018-06-15**

project no.
no. du projet **460-2716-0**

drawing no.
dessiné no. **C1.1**



NOTES:

- CONTRACTOR TO VERIFY LOCATION OF ALL BURIED SERVICES PRIOR TO START OF CONSTRUCTION.
- TOPOGRAPHIC INFORMATION PROVIDED BY WSP CANADA INC. FINISHED FLOOR ELEVATION (FFE) HAS BEEN INFERRED BY THE SURVEY BUT WAS NOT MEASURED.
- ELEVATIONS ARE GEODETIC.
- ALL DISTURBED AREAS TO BE REINSTATED USING 100mm OF TOPSOIL AND SOD UNLESS OTHERWISE NOTED.
- CATCHBASIN AND MANHOLE TO BE LOCKED AS PER CSC TECHNICAL GUIDELINES.
- GRADING TO BE A MAXIMUM OF 3H:1V.
- CONTRACTOR TO REVIEW SITE ACCESS CONSTRAINTS.
- ALL FRAME AND GRATE SHALL BE LOCKING AS PER DETAIL 3/C1.3.
- CONTRACTOR SHALL CONFIRM ALL EXISTING INVERTS PRIOR TO SHOP DRAWINGS SUBMISSION. A COPY OF THE INVERTS SHALL BE PROVIDED TO THE DEPARTMENT REPRESENTATIVE.
- PHASING AND ACCESS TO AND FROM SITE SHALL BE COORDINATED WITH DEPARTMENT REPRESENTATIVE.

LEGEND:

DC	NEW DEPRESSED CURB
ST	NEW STORM PIPE
ST	NEW PERFORATED PIPE & SWALE
ST	EXISTING STORM PIPE
X	EXISTING METAL FENCE
W	EXISTING WATERMAIN
SA	EXISTING SANITARY PIPE
ABD-HS	ABANDONED STEAM PIPE
HP	HIGH POINT GRADE LINE
54.00	SURFACE FLOW DIRECTION
54.00	FINISHED GROUND ELEVATION
54.00	EXISTING GROUND ELEVATION
54.00	EXISTING CATCH BASIN
54.00	EXISTING HYDRANT
54.00	EXISTING MANHOLE
54.00	NEW MANHOLE FRAME & GRATE
54.00	NEW CATCH BASIN
54.00	EXISTING SANITARY CLEANOUT
54.00	SITE TEMPORARY BENCH MARK
54.00	NEW CONCRETE
54.00	EXISTING BUILDING
54.00	EXISTING CONCRETE
54.00	NEW ASPHALT
54.00	INSULATION
54.00	EXISTING GRADES

TEMPORARY BENCH MARK

T.B.M. #	ELEVATION (m)	DESCRIPTION
1	201.13	TOP OF FLANGE OF FIRE HYDRANT



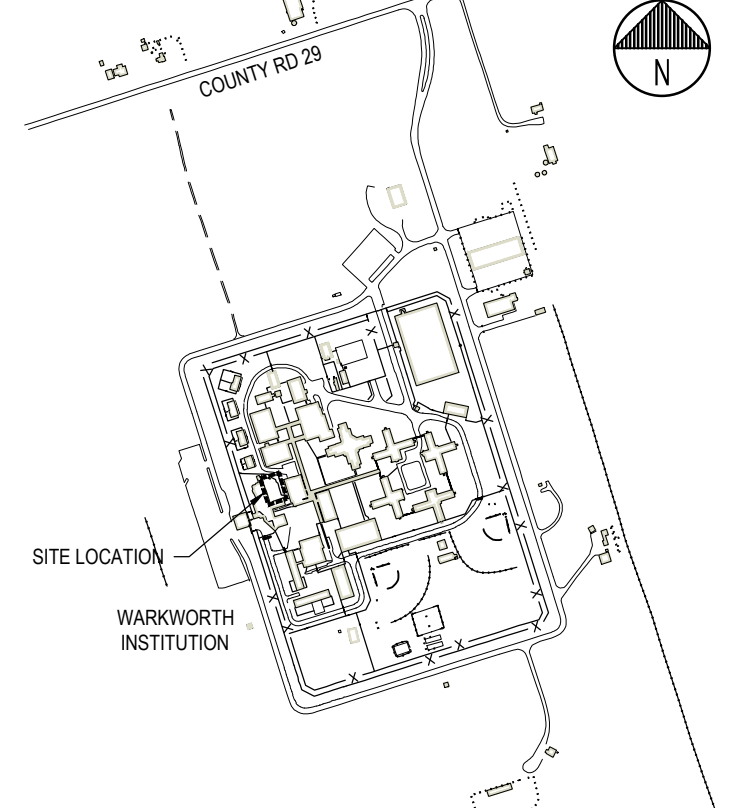
Correctional Service
of Canada
Service Correctionnel
du Canada

consultant



1224 GARDINERS ROAD, SUITE 201
KINGSTON, ONTARIO
CANADA K7P 6Z2
PHONE: 613-541-1211 FAX: 613-541-3523
WWW.WSPGROUP.COM

key plan



04		
03		
02		
01	ISSUED FOR TENDER	2018-06-15
revision		date

Do not scale drawings.
Verify all dimensions and conditions on site and immediately
notify the Departmental Representative of all discrepancies.

A	Detail No.
B	No. du détail
C	drawing no. - where detail required
	dessin no. - où détail exigé
	drawing no. - where detailed
	dessin no. - où détaillé

project title
titre du projet
CAMPBELLFORD ONTARIO
WARKWORTH INSTITUTION

WW27 COURTYARD REMEDIATION

drawing title
titre du dessin
SITE PLAN & GRADING

drawn by
dessiné par
MH

designed by
conc. par
MH/KC

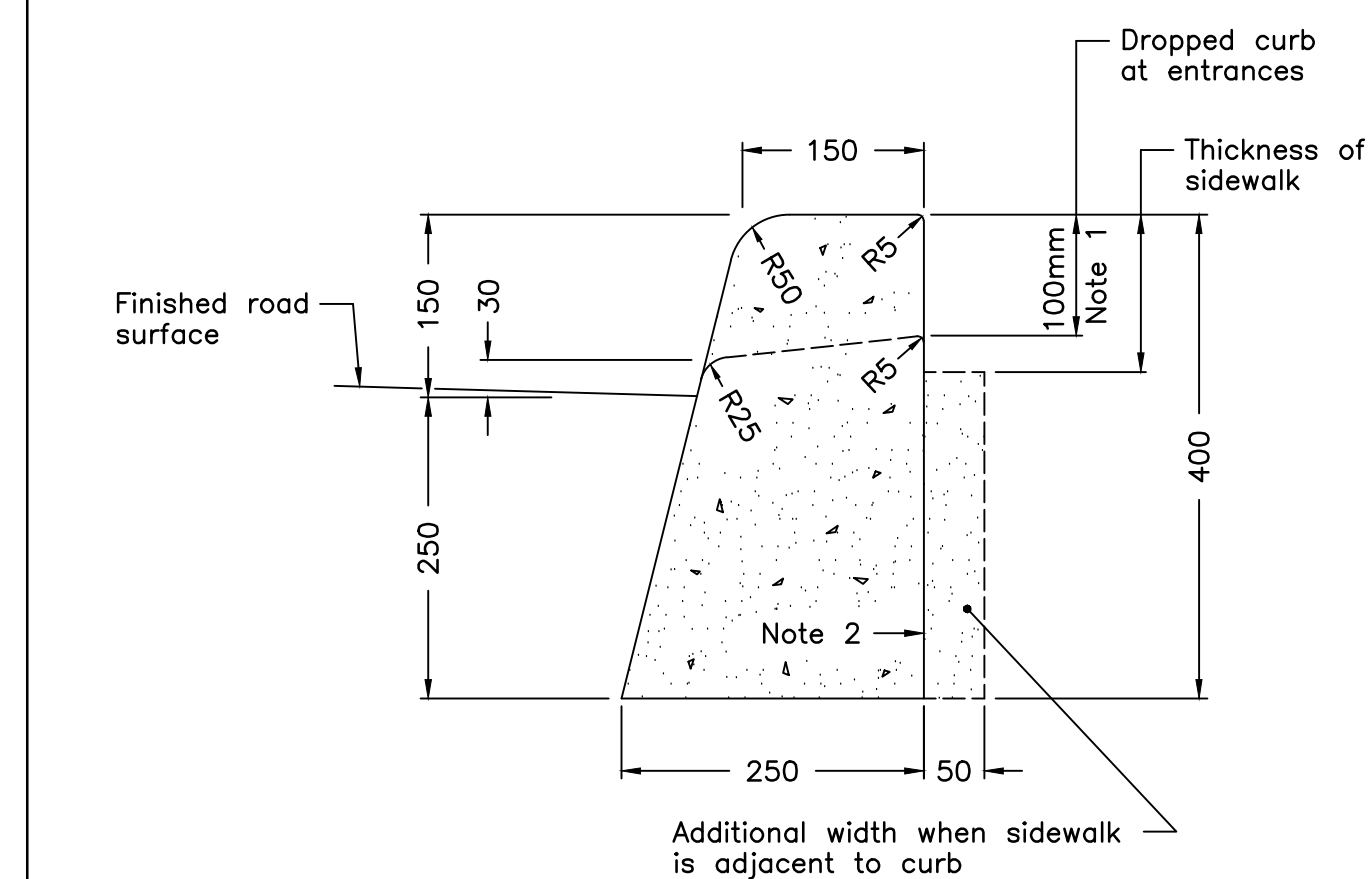
approved by
approuvé par
MF

bid
offre
project manager
administrateur
de projets

project date
date du projet
2018-06-15

project no.
no. du projet
460-2716-0

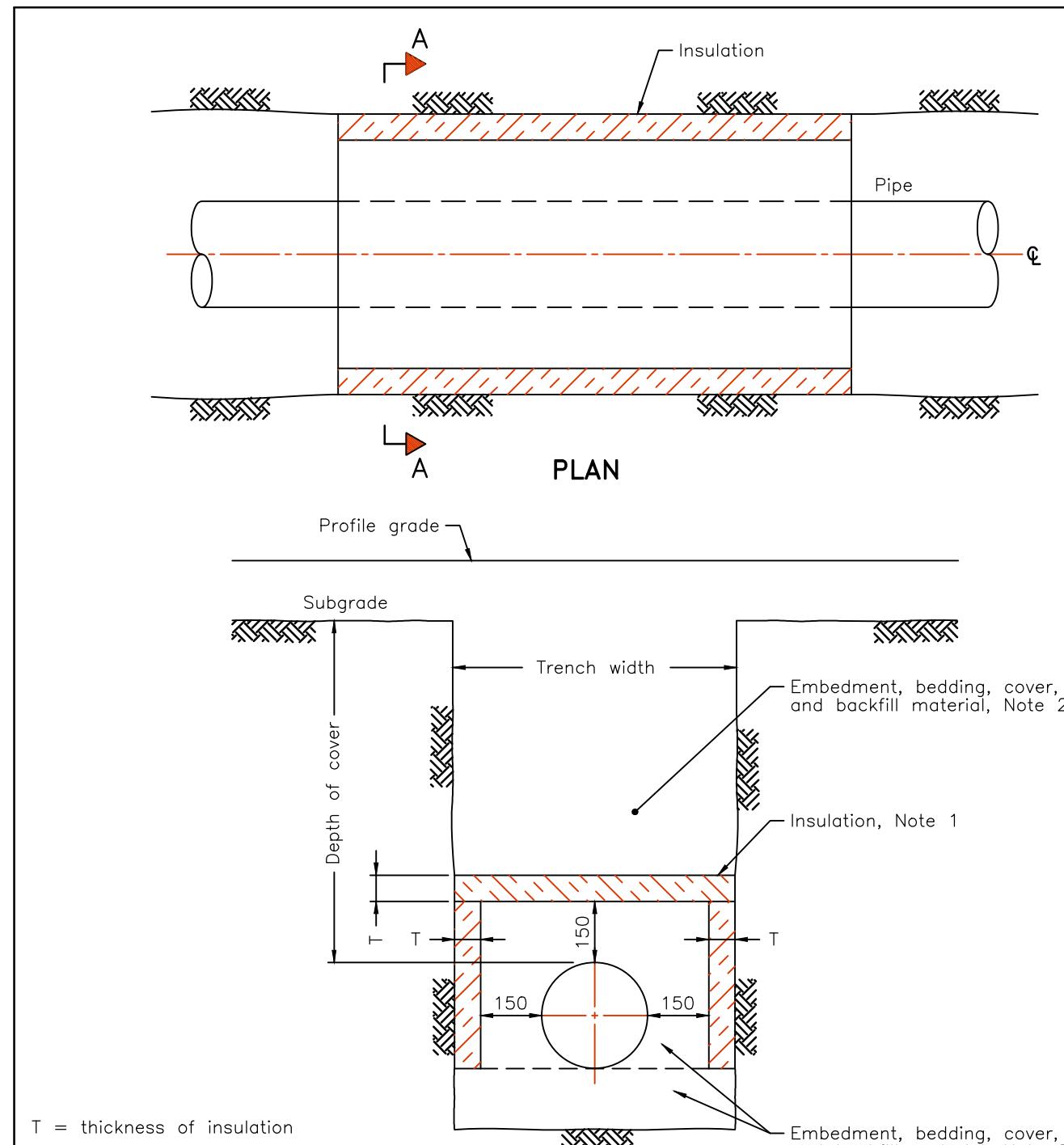
drawing no.
dessiné no.
C1.2



NOTES:

- 1 When sidewalk is continuously adjacent, the dropped curb at entrances shall be reduced to 75mm.
 2 For slipforming procedure a 5% batter is acceptable.
 A Treatment at entrances shall be according to OPSD 351.010.
 B Outlet treatment shall be according to the OPSD 610 Series.
 C The transition from one curb type to another shall be a minimum length of 3.0m, except in conjunction with guide rail where it shall be according to the OPSD 900 Series.
 D All dimensions are in millimetres unless otherwise shown.

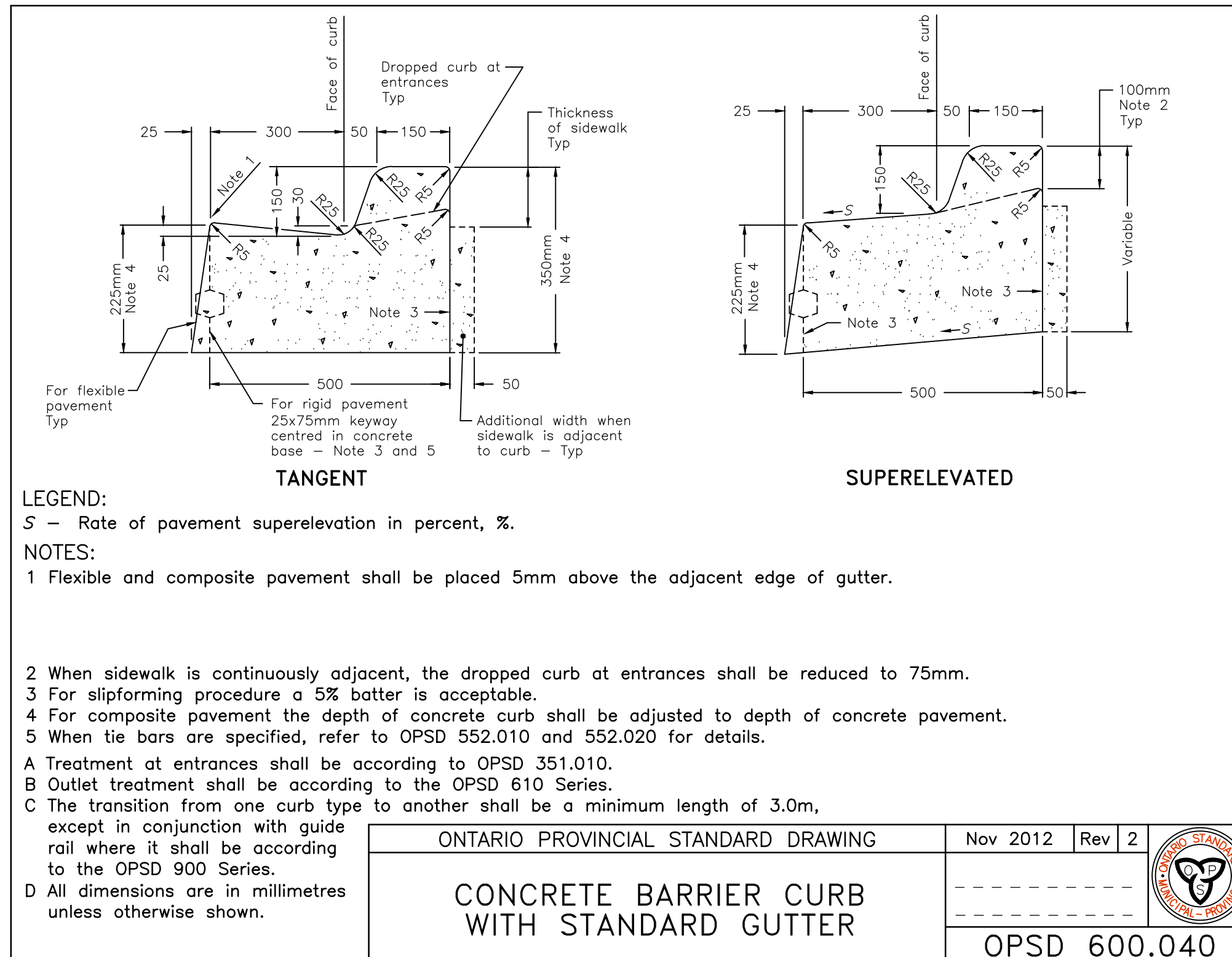
ONTARIO PROVINCIAL STANDARD DRAWING	Nov 2012	Rev 2	
CONCRETE BARRIER CURB			
			OPSD 600.110



NOTES:

- 1 The insulation material shall be extruded polystyrene according to OPSD 1605 with a minimum compressive strength of 275 kPa.
 2 Pipe embedment or bedding, cover, and backfill shall be according to:
 a) Flexible OPSD 802.010, 802.013, 802.020, and 802.023.
 b) Rigid – OPSD 802.030, 802.031, 802.032, 802.033, 802.035, 802.050, 802.051, 802.052, and 802.053.
 A Minimum insulation thickness shall be 50mm.
 B Joints shall be staggered for multiple insulation sheets.
 C All dimensions are in millimetres unless otherwise shown.

ONTARIO PROVINCIAL STANDARD DRAWING	Nov 2015	Rev 0	
INSULATION FOR SEWERS AND WATERMAINS IN SHALLOW TRENCHES			
			OPSD 1109.030



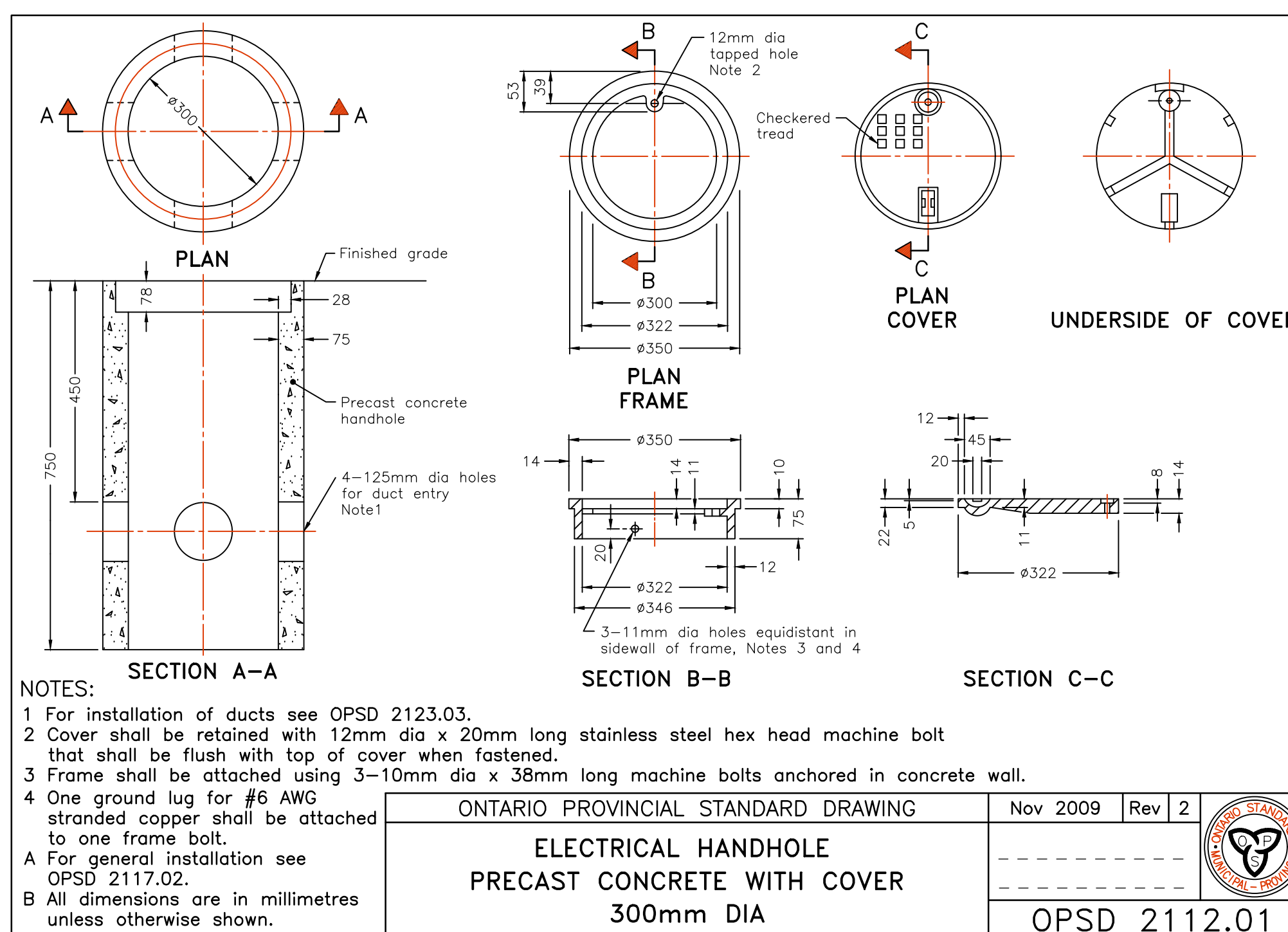
LEGEND:

S = Rate of pavement superelevation in percent, %.

NOTES:

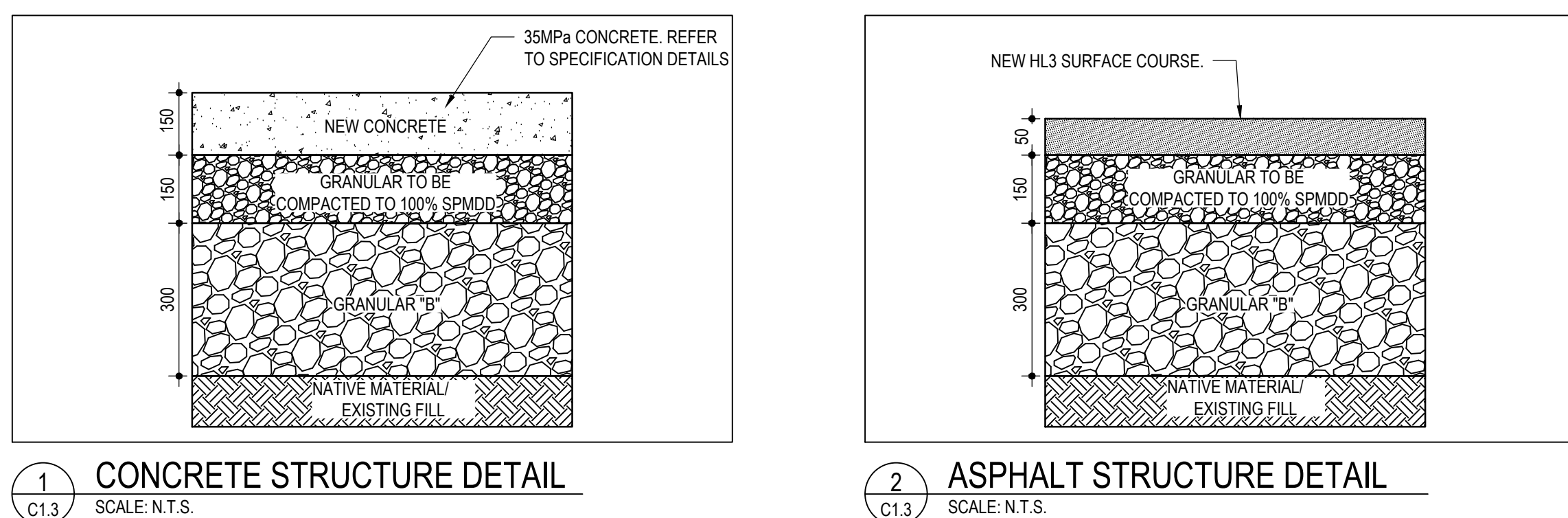
- 1 Flexible and composite pavement shall be placed 5mm above the adjacent edge of gutter.

- 2 When sidewalk is continuously adjacent, the dropped curb at entrances shall be reduced to 75mm.
 3 For slipforming procedure a 5% batter is acceptable.
 4 For composite pavement the depth of concrete curb shall be adjusted to depth of concrete pavement.
 5 When tie bars are specified, refer to OPSD 552.010 and 552.020 for details.
 A Treatment at entrances shall be according to OPSD 351.010.
 B Outlet treatment shall be according to the OPSD 610 Series.
 C The transition from one curb type to another shall be a minimum length of 3.0m, except in conjunction with guide rail where it shall be according to the OPSD 900 Series.
 D All dimensions are in millimetres unless otherwise shown.



NOTES:

- 1 For installation of ducts see OPSD 2123.03.
 2 Cover shall be retained with 12mm dia x 20mm long stainless steel hex head machine bolt that shall be flush with top of cover when fastened.
 3 Frame shall be attached using 3-10mm dia x 38mm long machine bolts anchored in concrete wall.
 4 One ground lug for #6 AWG stranded copper shall be attached to one frame bolt.
 A For general installation see OPSD 2117.02.
 B All dimensions are in millimetres unless otherwise shown.

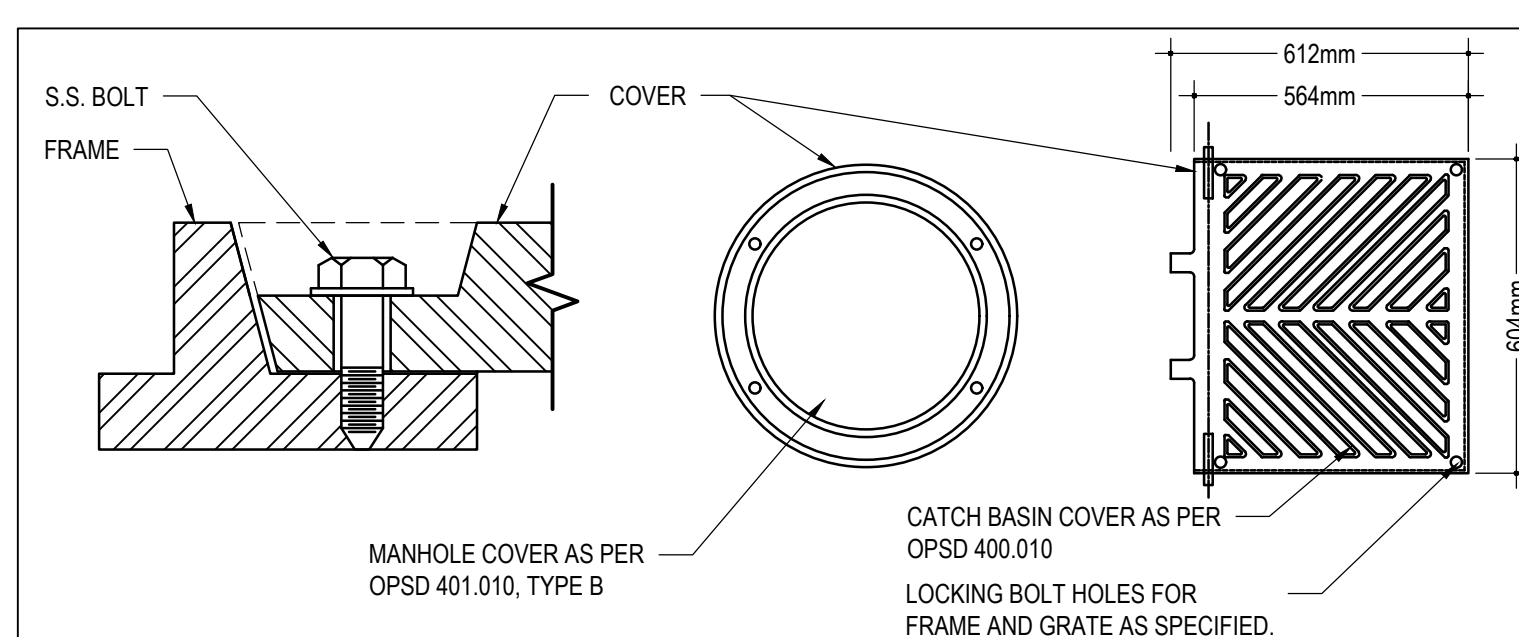


1 CONCRETE STRUCTURE DETAIL

SCALE: N.T.S.

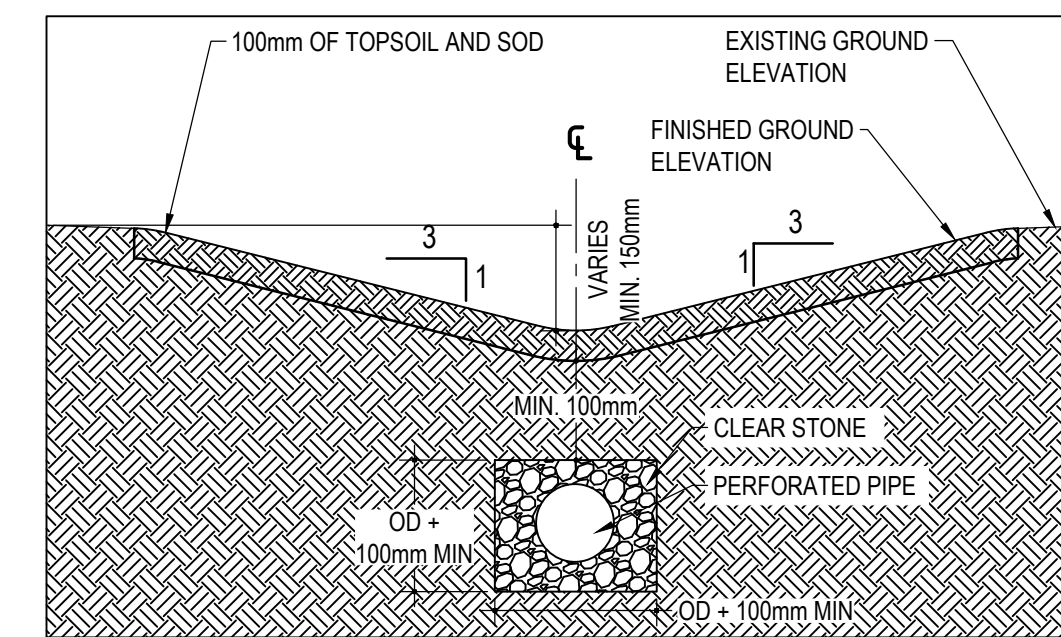
2 ASPHALT STRUCTURE DETAIL

SCALE: N.T.S.



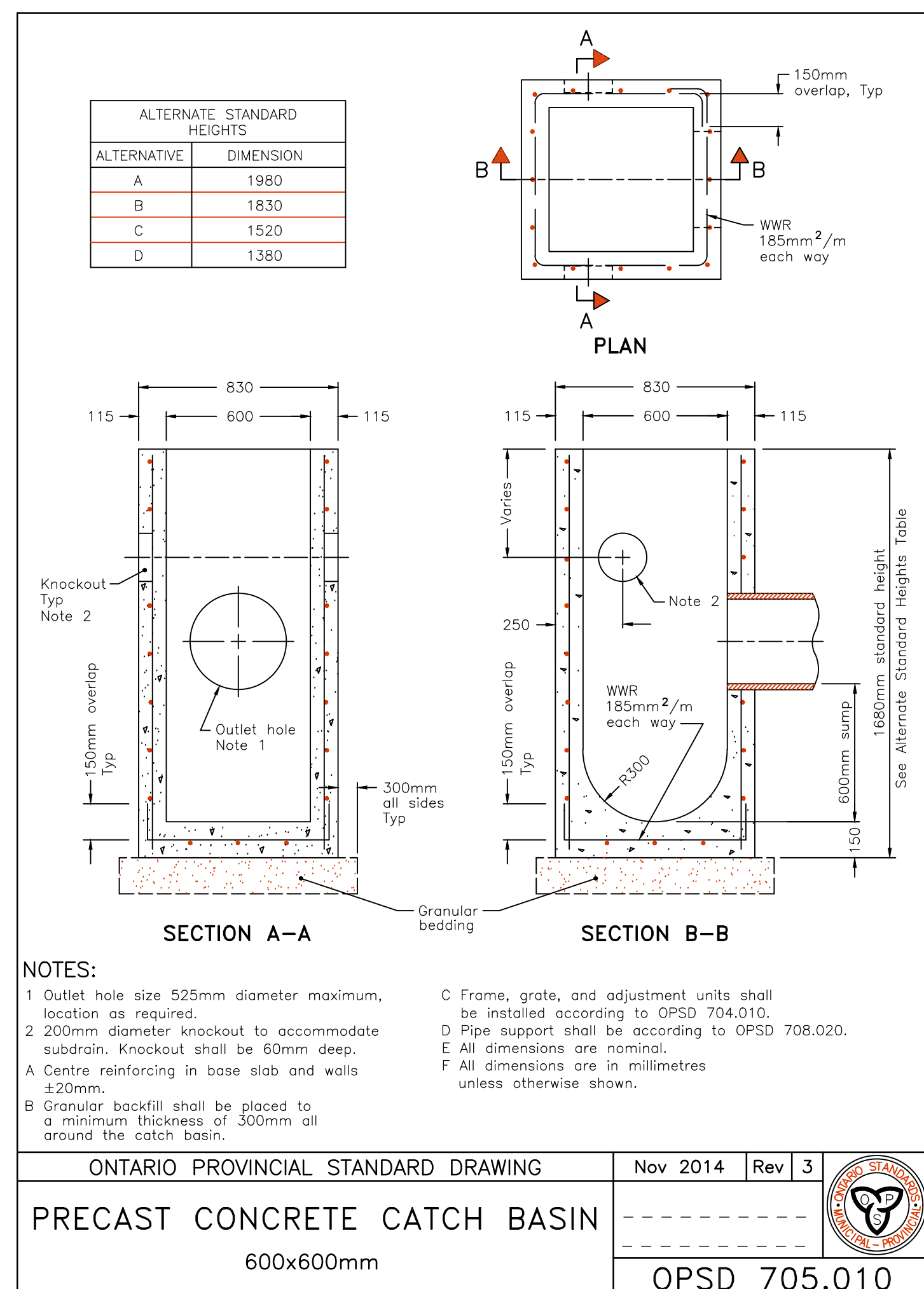
3 SECURITY MANHOLE COVER

SCALE: N.T.S.



4 SWALE CROSS-SECTION DETAIL

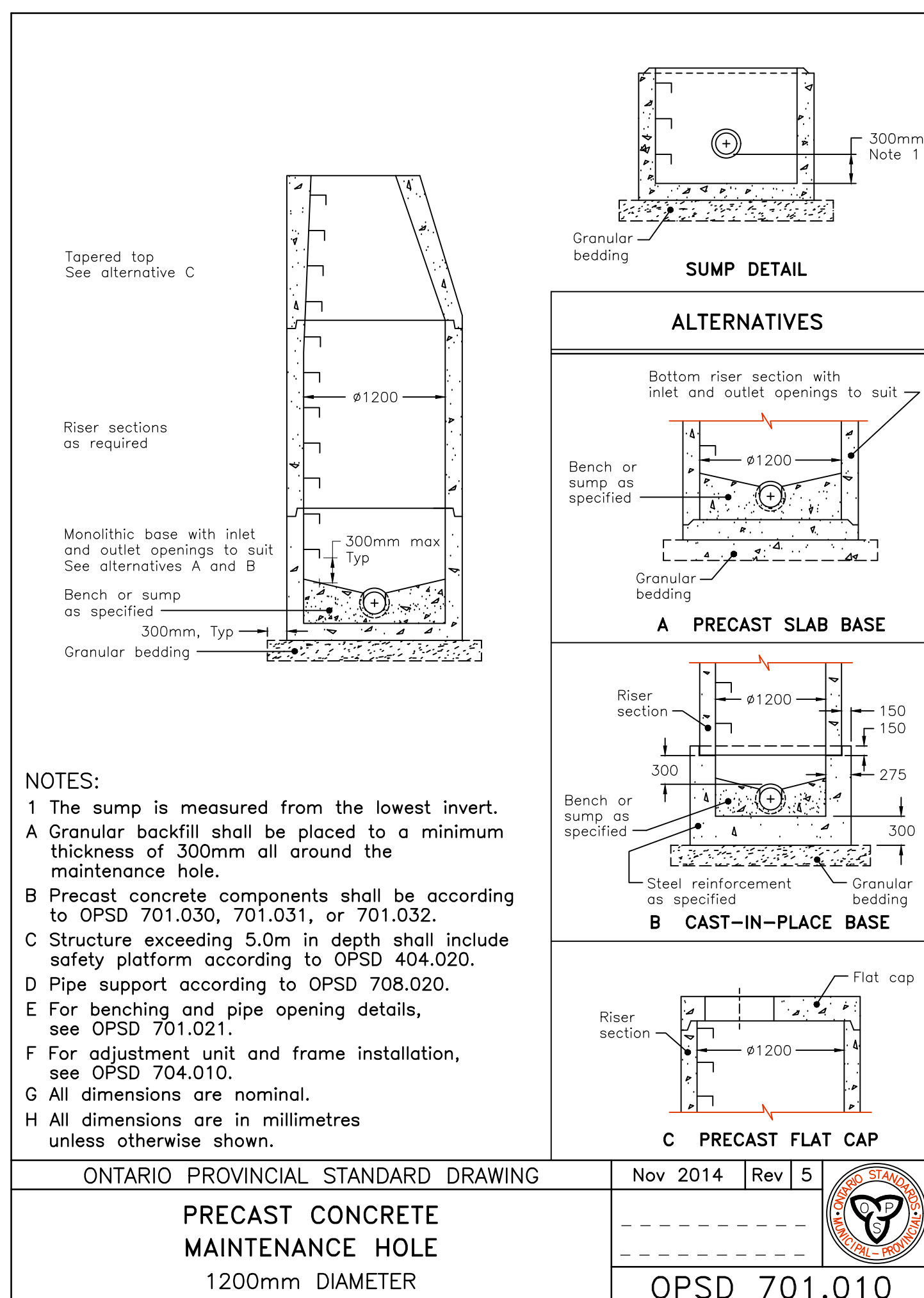
SCALE: N.T.S.



NOTES:

- 1 Outlet hole size 525mm diameter maximum, location as required.
 2 200mm diameter knockout to accommodate subdrain. Knockout shall be 60mm deep.
 A Centre reinforcing in base slab and walls ±20mm.
 B Granular backfill shall be placed to a minimum thickness of 300mm all around the catch basin.
 C Frame, grate, and adjustment units shall be installed according to OPSD 704.010.
 D Pipe support shall be according to OPSD 708.020.
 E All dimensions are nominal.
 F All dimensions are in millimetres unless otherwise shown.

ONTARIO PROVINCIAL STANDARD DRAWING	Nov 2014	Rev 3	
PRECAST CONCRETE CATCH BASIN			
600x600mm			OPSD 705.010



NOTES:

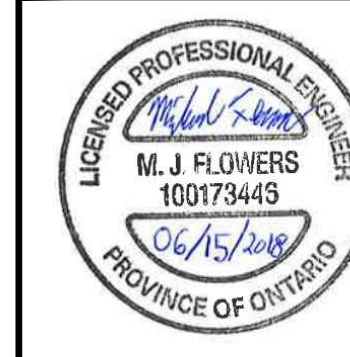
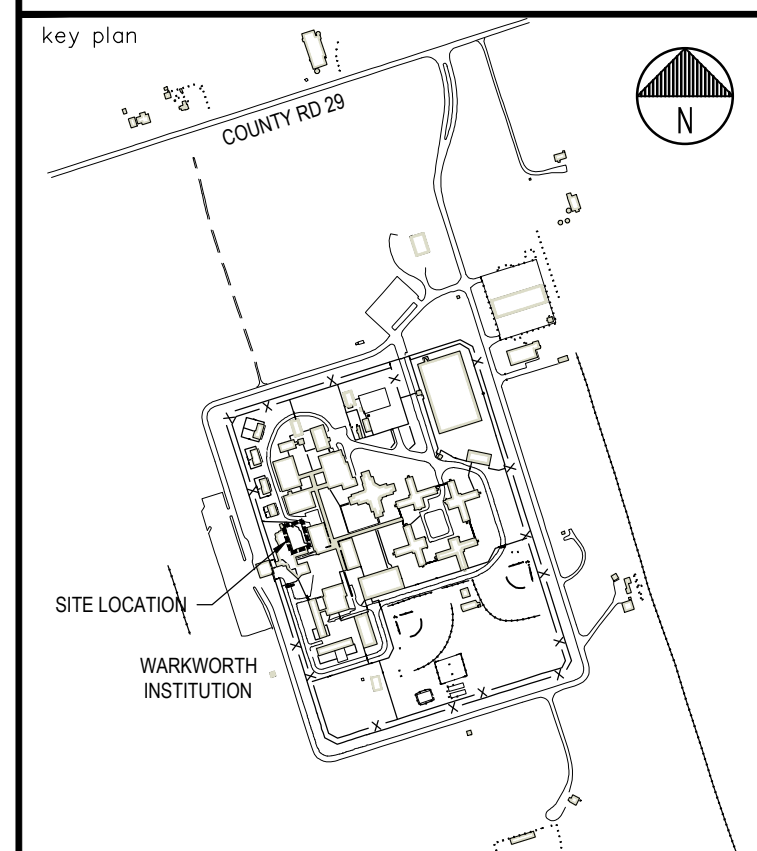
- 1 The sump is measured from the lowest invert.
 A Granular backfill shall be placed to a minimum thickness of 300mm all around the maintenance hole.
 B Precast concrete components shall be according to OPSD 701.030, 701.031, or 701.032.
 C Structure exceeding 5.0m in depth shall include safety platform according to OPSD 404.020.
 D Pipe support according to OPSD 708.020.
 E For benching and pipe opening details, see OPSD 701.021.
 F For adjustment unit and frame installation, see OPSD 704.010.
 G All dimensions are nominal.
 H All dimensions are in millimetres unless otherwise shown.

ONTARIO PROVINCIAL STANDARD DRAWING	Nov 2014	Rev 5	
PRECAST CONCRETE MAINTENANCE HOLE			
1200mm DIAMETER			OPSD 701.010

consultant

wsp

1224 GARDINERS ROAD, SUITE 201
 KINGSTON, ONTARIO
 CANADA K7P 0Z2
 PHONE: (613) 321-7744 FAX: (613) 321-7743
 WWW.VISPGROUP.COM



04		
03		
02		
01	ISSUED FOR TENDER	2018-06-15
revision		date

Do not scale drawings.
 Verify all dimensions and conditions on site and immediately notify the Departmental Representative of all discrepancies.

A	Detail No.
B	No. du détail
C	drawing no. - where detail required
	dessin no. - où détail exigé
	drawing no. - where detailed
	dessin no. - où détaillé

project title
 titre du projet
CAMPBELLFORD **ONTARIO**
WARKWORTH INSTITUTION

WW27 COURTYARD REMEDIATION

drawing title
 titre du dessin
DETAILS

drawn by
 dessiné par **MH**

designed by
 conc par **MH**

approved by
 approuvé par **MF**

bid
 offre project manager
 administrateur de projets

project date
 date du projet **2018-06-15**

project no.
 no. du projet **460-2716-0**

drawing no.
 dessin no. **C1.3**