

The following changes to the tender documents are effective immediately and will form part of the contract documents:

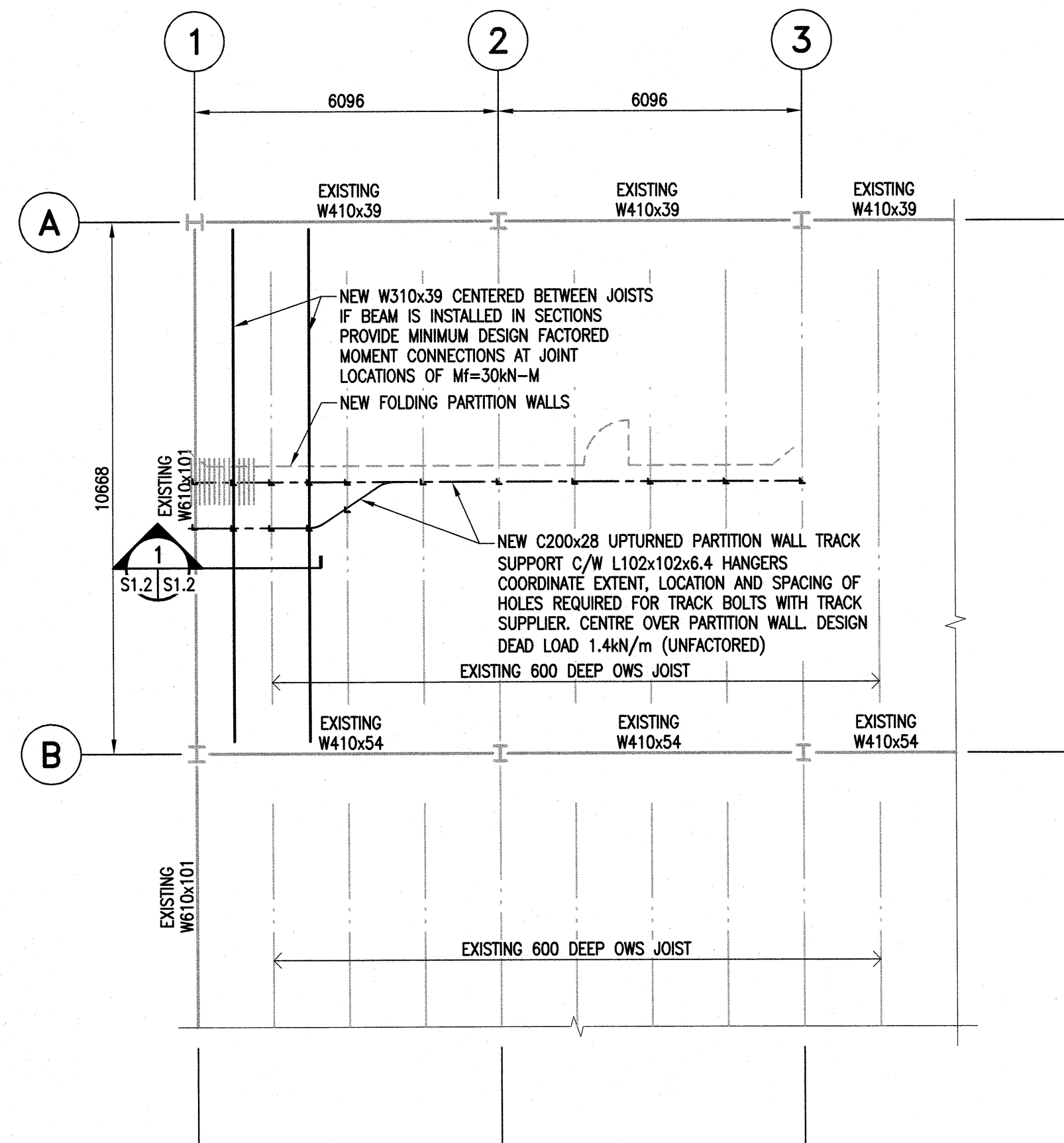
This addendum consists of one (1) page plus the following list of attached drawings:

No.	Drawing Title	Issue Date
RA3.1	Revisions to Sheet A5 Retractable Wall Section Modifications	23 July 2018
S1.2	Partial Roof Plan Sections and Notes	23 July 2018

#### 1.1 CHANGES TO THE DRAWINGS

- .1 DRAWING RA3.1 Revisions to Sheet A5 Retractable Wall Section Modifications
  - .1 **Replace** detail 7/A5 with RA3.1.
- .2 DRAWING S1.2 Partial Roof Plan Sections and Notes
  - .1 **Add** drawing S1.2 Partial Roof Plan Sections and Notes
- .3 DRAWING E9
  - .1 Refer to partial single line distribution diagram. Refer to note indicating 2#18A WG twisted pair for start signal interlock. This note for both ATS-1 and ATS-2 are to reference note #10.
  - .2 **Add** note #10 to read as follows:
    - .1 ATS start signal to be wired thru an auxiliary contact on the new 400A-3P circuit breaker to the generator control panel. When either of the main circuit breakers on SD-6B-E1-A or SD-6B-E2-B are left open using the kirk-key interlock, the generator associated with the open breaker will not receive a start signal. The intent is to have only a single generator run at a time.

**END OF ADDENDUM**



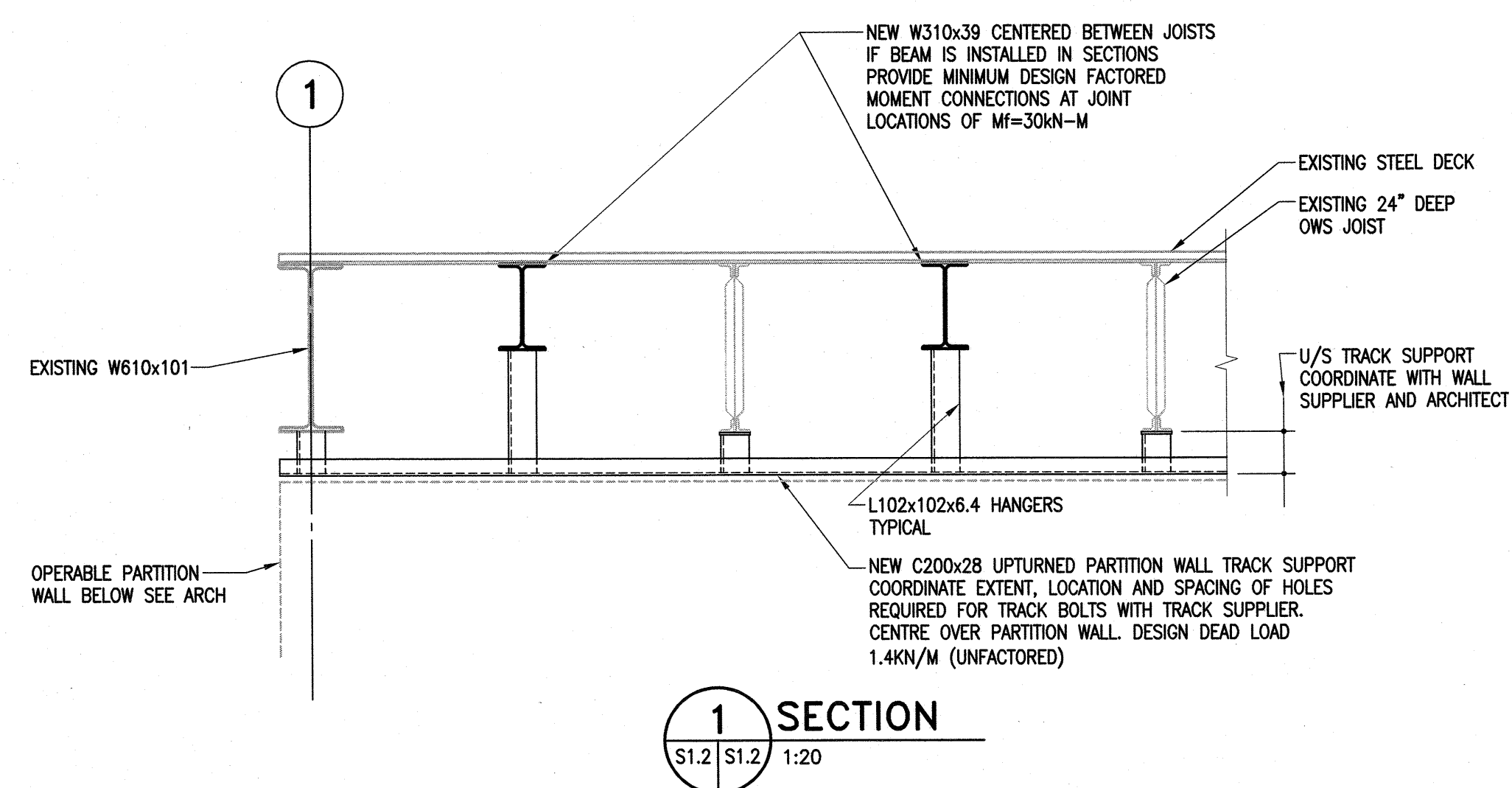
### EXISTING ROOF PLAN

1 : 100

ROOF LOADING:

DEAD LOAD = 1.2kPa

SNOW LOAD = 1.72kPa



### SECTION

S1.2/S1.2 1:20

### GENERAL NOTES

#### STRUCTURAL STEEL REQUIREMENTS

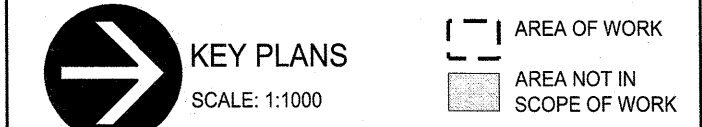
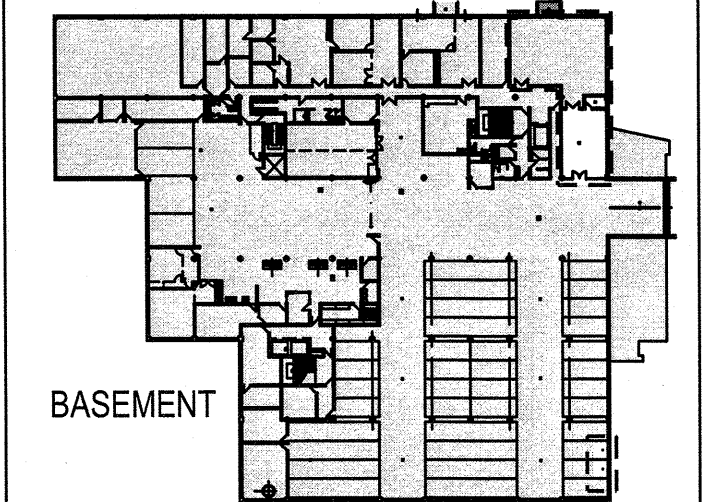
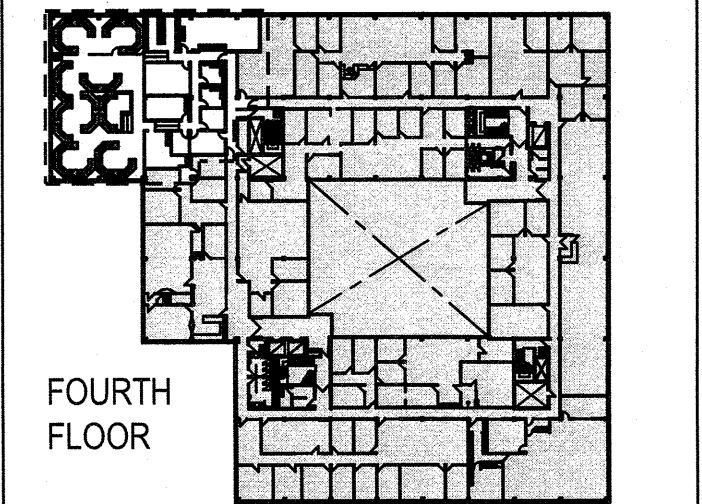
1. STRUCTURAL STEEL TO CONFORM TO CSA-C40.21, "STRUCTURAL QUALITY STEELS" AND CSA-C40.20 "GENERAL REQUIREMENTS FOR ROLLED OR WELDED STRUCTURAL QUALITY STEEL".
2. ALL ANGLES, CHANNELS AND PLATES SHALL BE C40.21-300W.
3. FABRICATION AND ERECTION OF STRUCTURAL STEEL SHALL BE PERFORMED IN ACCORDANCE WITH CSA S16-14, "DESIGN OF STEEL STRUCTURES".
4. ALL WELDING SHALL CONFORM TO THE LATEST EDITION OF CSA W59, "WELDED STEEL CONSTRUCTION". FABRICATORS SHALL BE PROPERLY CERTIFIED IN ACCORDANCE WITH CSA W47.1, "CERTIFICATION OF COMPANIES FOR FUSION WELDING OF STEEL STRUCTURES".
5. ALL BOLTED CONNECTIONS TO USE A325 HIGH STRENGTH BOLTS. MINIMUM CONNECTION SHALL CONSIST OF 2 BOLTS.
6. ALL STRUCTURAL STEEL IS TO RECEIVE ONE COAT OF CISC/CPMA 1-73a QUICK DRYING SHOP PRIMER. STEEL TO BE CLEANED IN CONFORMANCE WITH SSPC-SP2.
7. FABRICATOR TO NOTIFY ENGINEER OF ANY PROPOSED MEMBER SUBSTITUTIONS AND CHANGED CONNECTION DETAILS.
8. THE STRUCTURAL STEEL SUPPLIER SHALL PROVIDE AND BE RESPONSIBLE FOR ALL HOLES IN STEEL SECTIONS REQUIRED BY OTHER TRADES. SECTION SHALL BE STRENGTHENED WHERE REQUIRED TO GUARANTEE THE ORIGINAL STRENGTH OF THE BEAM. ANY CUTTING OF STEEL AT THE JOB SITE SHALL BE DONE ONLY AS DIRECTED AND APPROVED BY THE ENGINEER.
9. STRUCTURAL STEEL SUPPLIER IS TO SUBMIT ENGINEERING DRAWINGS BEARING THE SEAL OF A PROFESSIONAL ENGINEER REGISTERED IN THE PROVINCE OF MANITOBA COVERING THE DESIGN OF CONNECTIONS, TO THE PROJECT DESIGN ENGINEER FOR REVIEW PRIOR TO FABRICATION. CONNECTION DESIGN TO INCLUDE FOR ALL ADJUSTABLE CONNECTIONS REQUIRED TO SUIT FABRICATION AND ERECTION PROCEDURES AND TOLERANCES.



Certificate of Authorization

Crosier Kilgour & Partners Ltd.

No. 235 Date: 2018-07-23



5		
4		
3		
2		
1		
0	ISSUED FOR ADDENDUM #3	2018 07 23
Revision	Description	Date

Client

PSPC/SPAC

SUITE 100-167 LOMBARD AVENUE  
WINNIPEG, MANITOBA

Project title  
INTERIOR ALTERATIONS  
1091 PORTAGE AVENUE  
WINNIPEG, MANITOBA

SUITE 483  
RENOVATION & FIT UP

Designed by  
AUG

Drawn by  
JLP

Approved by  
--

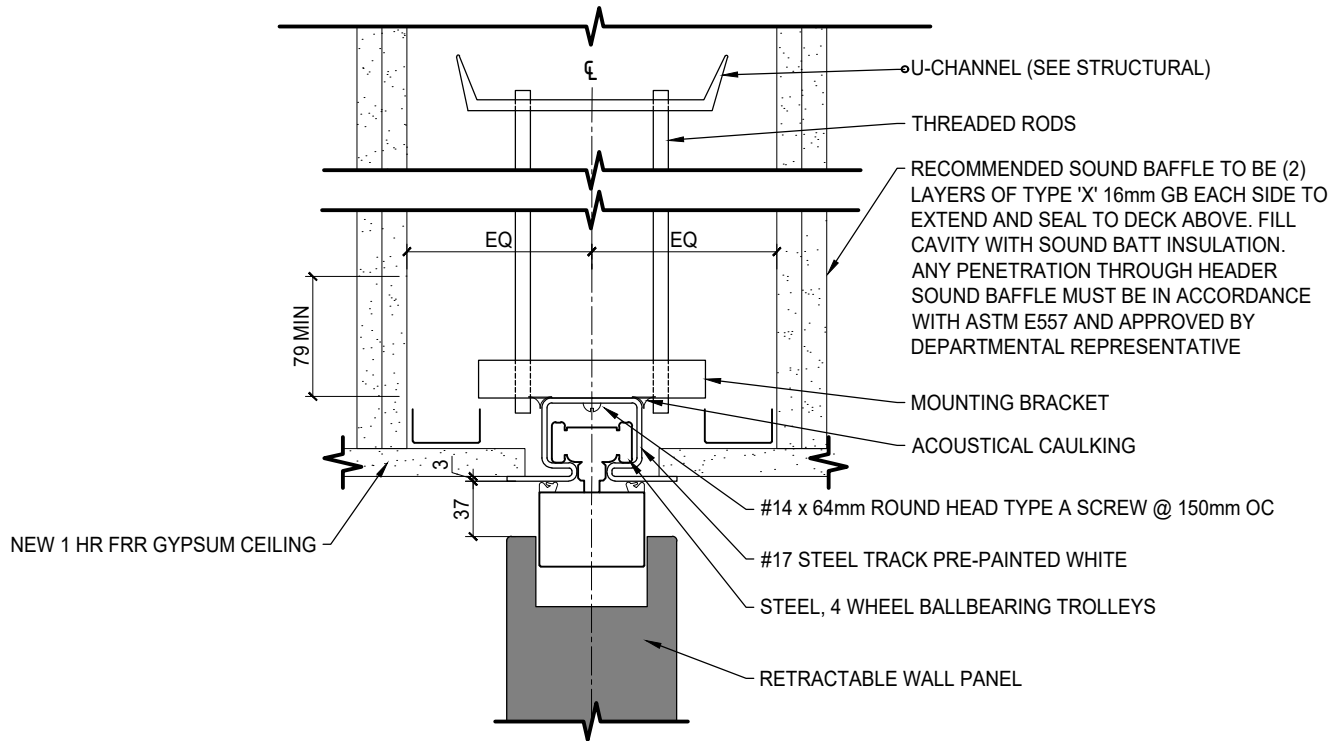
PWGSC Project Manager  
MARK ARROJADO

Drawing title

PARTIAL ROOF PLAN  
SECTIONS AND NOTES

Project no.	Drawing no.	Revision no.
R.076524.002	S1.2	0

OF 2



1

## RETRACTABLE WALL SECTION REVISIONS

RA3.1

SCALE: NTS

### DO NOT SCALE DRAWINGS

Project title/Titre du projet

Interior Alterations - Suite 483 Renovation & Fit Up  
1091 Portage Avenue  
Winnipeg, Manitoba

Drawing title/Titre du dessin

REVISIONS TO SHEET A5  
RETRACTABLE WALL SECTION MODIFICATIONS  
ADDENDUM 3

Approved by/Approuvé par

N/A

PWGSC Project Manager/Administrateur  
de Projets TPSGC Mark Arrojado

Scale/Echelle

As Noted

Designed by/Concept par

TS

PWGSC, Architectural and Engineering Resources Manager/  
Ressources Architectural et de Directeur d'ingénierie,  
TPSGC

Date/Date

2018-07-23

Drawn by/Dessiné par

HA

Project No./No. du  
projet R.076524.002

Sheet/Feuille

1 of 1

Revision/ Revision  
**RA3.1**