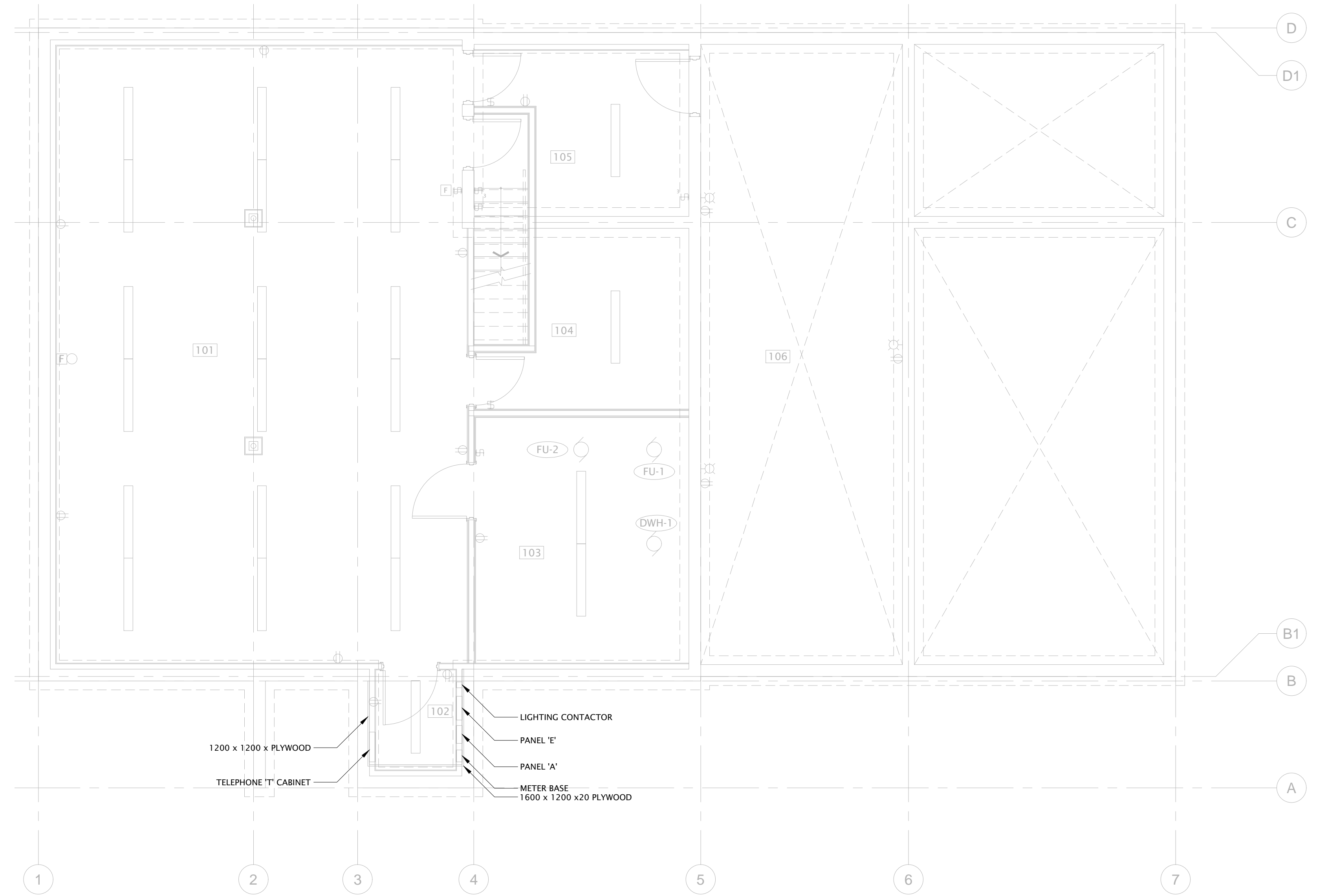


PLOT DATE: May 24, 2018 TIME: 12:40 PM FULL PATH AND FILENAME: \\CALNAS01\CALGARY\NORR\PROJECTS\RCMP - PROJECTS\NCCA16-0157-00 RCMP CONSORT RENOVATIONS\500-DELIV\ELECTRICAL\500-01.DWG PLOTSYCLE TABLE: ---

LEGEND OF SYMBOLS				OCT 2014			
LIGHTING		MECHANICAL		COMMUNICATION SYSTEMS		FIRE ALARM	
	RECESSED LED / INCANDESCENT / COMPACT FLUORESCENT LUMINAIRE		MOTOR		VOICE OUTLET		SMOKE ALARM
	SURFACE LED / INCANDESCENT / COMPACT FLUORESCENT LUMINAIRE		MOTOR C/W DISCONNECT SWITCH		COMBINATION VOICE/DATA OUTLET		FIXED HIGH TEMPERATURE 200°F HEAT DETECTOR (88°C)
	WALL LED / INCANDESCENT / COMPACT FLUORESCENT LUMINAIRE		FUSED KNIFE SWITCH	SECURITY SYSTEMS			FIXED HIGH TEMPERATURE 135°F HEAT DETECTOR (58°C)
	RECESSED FLUORESCENT LUMINAIRE		MOTOR IDENTIFICATION TAG (REFER TO MECHANICAL SCHEDULE)				PUSH BUTTON
	FLUORESCENT STRIP LUMINAIRE	POWER			MAGNETIC DOOR HOLD OPEN		FIRE ALARM COMBINATION HORN AND STROBE
	EMERGENCY POWER BATTERY PACK C/W LIGHTING HEADS		SINGLE/SPECIAL PURPOSE RECEPTACLE		THERMOSTAT		FIRE ALARM BOX
	SINGLE REMOTE EMERGENCY LIGHTING HEAD - CEILING MOUNT		DUPLEX RECEPTACLE		HUMIDISTAT		
	SINGLE REMOTE EMERGENCY LIGHTING HEAD - WALL MOUNT		GROUND FAULT RECEPTACLE				
	SWITCH - SINGLE, TWO, AND THREE GANG		CEILING MOUNTED JUNCTION/SLAB BOX				
	SWITCH - 3 WAY		FLOOR MOUNTED JUNCTION/SLAB BOX				
	PHOTO ELECTRIC CELL						

LIST OF DRAWINGS	
Sheet Number	Sheet Title
E00-01	BASEMENT POWER AND LIGHTING PLAN - EXISTING
E01-00	MAIN FLOOR POWER AND LIGHTING PLAN - DEMOLITION
E02-00	NEW MAIN FLOOR POWER AND LIGHTING PLAN
E03-00	ELECTRICAL DETAILS & SPECIFICATIONS

- GENERAL NOTES:**
- REFER TO MAIN FLOOR PLAN - POWER & LIGHTING PLAN ON DRAWING E02-00 FOR NEW LAYOUTS. ALL ELECTRICAL DEVICES IN THE BASEMENT ARE EXISTING TO REMAIN.
 - ELECTRICAL DEVICES DENOTED WITH AN 'R' REPRESENTS ITEMS TO BE REMOVED.
 - ELECTRICAL CONTRACTOR TO VERIFY ALL WIRING AND CONNECTIONS IN ELECTRICAL PANEL AND UPDATE THE PANEL SCHEDULE FOR EACH PANEL. THE PANEL SCHEDULE SHOULD INCLUDE BREAKER SIZE AND POLES, LOAD TYPE AND ESTIMATED LOAD POWER.
 - CONTRACTOR TO VERIFY THE LOCATION OF ALL ELECTRICAL EQUIPMENT INCLUDING ALL LIGHTING FIXTURES, POWER AND TELECOM RECEPTACLES, SECURITY AND DOOR HARDWARE, WHETHER OR NOT SHOWN ON THIS DRAWING PACKAGE.
 - CONTRACTOR TO VERIFY CONNECTIONS ON ALL POWER RECEPTACLES (INCLUDING NEW OR EXISTING), LABEL THEM ALL AND REPLACE IF NOT WORKING.
 - ALL LIGHTING SWITCHES TO BE VERIFIED AND REPLACED IF NEEDED.



01 BASEMENT POWER AND LIGHTING PLAN - EXISTING
E00-01 1:50

DATE	ISSUED FOR	REV
2016-10-28	ISSUED FOR CLIENT REVIEW	A
2018-05-23	ISSUED FOR CLIENT REVIEW	B

This drawing has been prepared solely for the use of the CLIENT and there are no representations of any kind made by NORR Architects Engineers Planners to any party with whom NORR Architects Engineers Planners has not entered into a contract.

This drawing shall not be used for construction purposes until the seal appearing hereon is signed and dated by the Architect or Engineer.

Project Component
CONSTRUCTION DRAWINGS
Keyplan

Consultants
Civil: ARROW ENGINEERING
Landscape: N/A
Architectural: NORR ARCHITECTS ENGINEERS PLANNERS
Structural: NORR ARCHITECTS ENGINEERS PLANNERS
Mechanical: NORR ARCHITECTS ENGINEERS PLANNERS
Electrical: NORR ARCHITECTS ENGINEERS PLANNERS

Seal(s)

NORR
2300, 411 - 1st Street SE,
Calgary, AB Canada T2G 4Y5
norr.com
NORR ARCHITECTS ENGINEERS PLANNERS
A Partnership of Limited Companies
Plan, Measure, Analyze, Design, Build, Operate, Maintain, Improve
NORR is a trademark owned by the registered group of companies and is used under license.
Your Draft Architect: A.A.A. B.Arch, M.Arch.
Drafts: C. McEwen, Architect, A.A.A., M.Arch, M.A.B.C.
A. Shah, Registered Architect, A.A.A., B.Arch, M.A.B.C.
Allen Tisdale, P.Eng., A.P.E.C.A.
Chris Piel, P.Eng., A.P.E.C.A.

Project Manager	Drawn
D.HIDER	A. MOHAMMADZADEH
Project Leader	Checked
D.HIDER	D.HIDER

Client
ROYAL CANADIAN MOUNTED POLICE
K DIVISION
CONSORT DETACHMENT

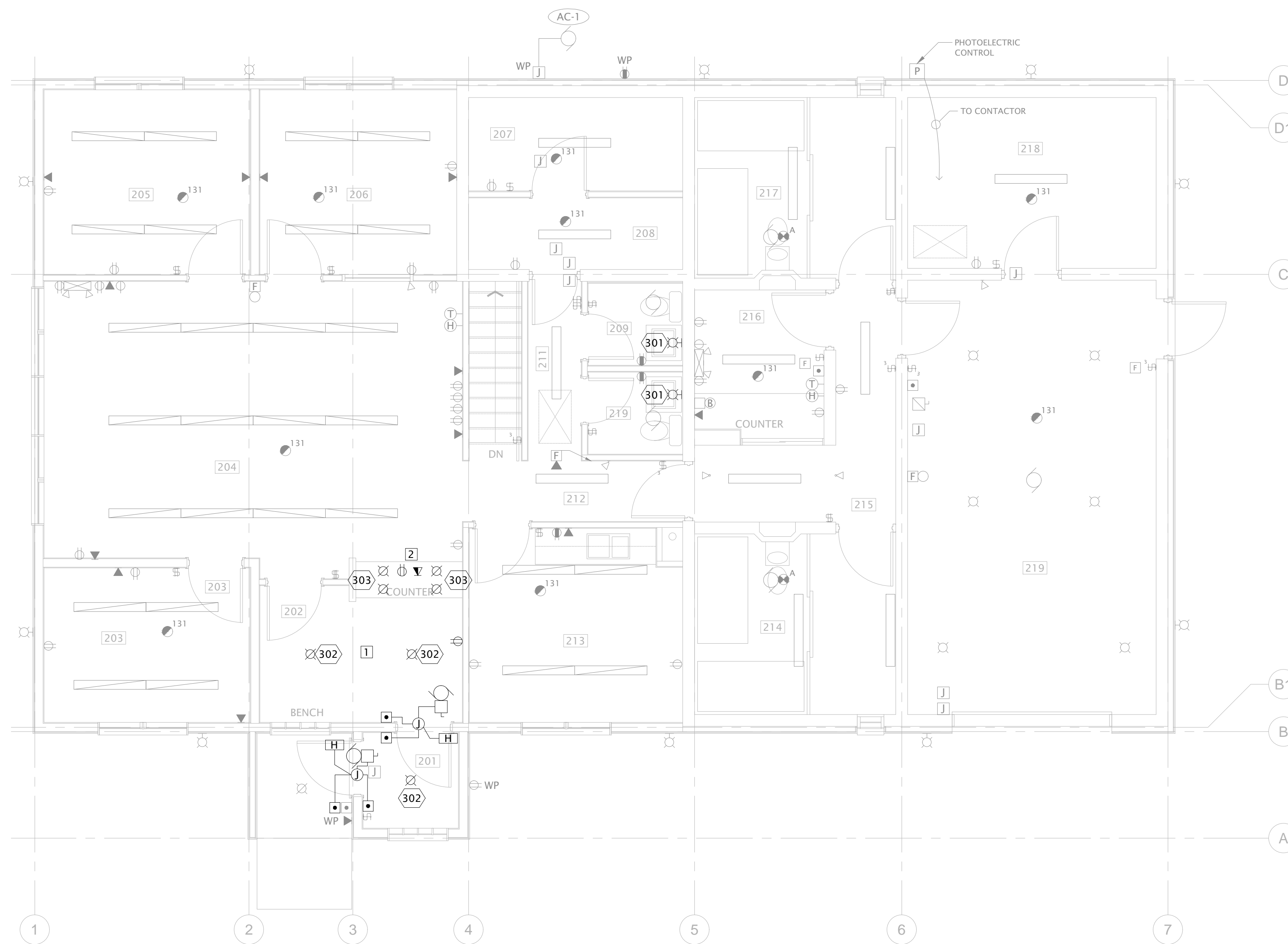
Project
DETACHMENT RENOVATIONS
CONSORT, ALBERTA

Drawing Title
BASEMENT FLOOR PLAN
POWER & LIGHTING PLAN

Check Scale (may be photo reduced)
0 1inch 0 10mm

Project No. NCCA-16-0157
Drawing No. E00-01

PLOT DATE: May 24, 2018 TIME: 12:45 PM FULL PATH AND FILENAME: \\CALNAS01\CALGARY\NORR\PROJECTS\RCMP - PROJECTS\NCCA16-0157-00 RCMP CONSORT RENOVATIONS\500-DELIVERABLES\500-00.DWG PLOTS\STYLE TABLE: ----



01 NEW MAIN FLOOR POWER AND LIGHTING PLAN
E02-00 1:50

GENERAL NOTES:

1. REFER TO MAIN FLOOR PLAN - POWER & LIGHTING PLAN ON DRAWING E02-00 FOR NEW LAYOUTS. ALL ELECTRICAL DEVICES IN THE BASEMENT ARE EXISTING TO REMAIN.
2. ELECTRICAL CONTRACTOR TO VERIFY ALL WIRING AND CONNECTIONS IN ELECTRICAL PANEL AND UPDATE THE PANEL SCHEDULE FOR EACH PANEL. THE PANEL SCHEDULE SHOULD INCLUDE BREAKER SIZE AND POLES, LOAD TYPE AND ESTIMATED LOAD POWER.
3. CONTRACTOR TO VERIFY THE LOCATION OF ALL ELECTRICAL EQUIPMENT INCLUDING ALL LIGHTING FIXTURES, POWER AND TELECOM RECEPTACLES, SECURITY AND DOOR HARDWARE, WHETHER OR NOT SHOWN ON THIS DRAWING PACKAGE.
4. CONTRACTOR TO VERIFY CONNECTIONS ON ALL POWER RECEPTACLES (INCLUDING NEW OR EXISTING), LABEL THEM ALL AND REPLACE IF NOT WORKING.
5. ALL LIGHTING SWITCHES TO BE VERIFIED AND REPLACED IF NEEDED.
6. ALL NEW LIGHTING FIXTURES OR POWER RECEPTACLES TO BE CONNECTED TO THE EXISTING CIRCUIT. CONTRACTOR TO VERIFY THE LOAD.
7. THE MAIN ENTRANCE VESTIBULE DOOR OPERATOR TO BE CONNECTED TO THE BUILDING SECURITY SYSTEM AND THE DOOR TO BE LOCKED AFTER HOURS.
8. ELECTRICAL CONTRACTOR SHALL COMPLETE A DETAILED SURVEY OF ALL ELECTRICAL COMPONENTS ON THE EXTERIOR AND INTERIOR OF BUILDING AND MARKUP ON A SET OF AS-BUILT DRAWINGS. MARKUPS WILL INCLUDE CIRCUIT DESIGNATIONS.
9. MAIN ENTRANCE AND VESTIBULE HANDICAP PUSHBUTTON TO BE MS SEDCO PRODUCT 59R4-HSS (STAINLESS STEEL WITH BLUE PAINT FILLED LEGEND) OR APPROVED EQUAL.
10. ELECTRICAL CONTRACTOR TO PROVIDE NEW 15A-1P CIRCUITS FOR EACH NEW DOOR OPERATOR.
11. CAT5E CABLE TO BE USED FOR NEW TELECOMMUNICATION

REFERRAL NOTES:

- 1 ALL WALL MOUNTED ELECTRICAL TO BE ADJUSTED TO NEW WALL
- 2 COORDINATE ELECTRICAL DEVICES WITH ARCHITECTURAL MILLWORK.

DATE	ISSUED FOR	REV
2016-10-28	ISSUED FOR CLIENT REVIEW	A
2018-05-23	ISSUED FOR CLIENT REVIEW	B

This drawing has been prepared solely for the use of the CLIENT and there are no representations of any kind made by NORR Architects Engineers Planners to any party with whom NORR Architects Engineers Planners has not entered into a contract.

This drawing shall not be used for construction purposes until the seal appearing hereon is signed and dated by the Architect or Engineer.

Project Component
CONSTRUCTION DRAWINGS

Keyplan

Consultants
 Civil: ARROW ENGINEERING
 Landscape: N/A
 Architectural: NORR ARCHITECTS ENGINEERS PLANNERS
 Structural: NORR ARCHITECTS ENGINEERS PLANNERS
 Mechanical: NORR ARCHITECTS ENGINEERS PLANNERS
 Electrical: NORR ARCHITECTS ENGINEERS PLANNERS

Seal(s)

NORR

2300, 411 - 1st Street SE,
 Calgary, AB Canada T2G 4Y5
 norr.com

NORR ARCHITECTS ENGINEERS PLANNERS
 A Partnership of Limited Companies

From MidKnox Architects (Alberta) Inc. From MidKnox Holdings Inc.
 NORR is a trademark owned by the Corporation Group Inc. and is used under license.

Vicor Smith, Architect, A.A.A., B.Arch, M.A.R.C.
 Brian G. McKeown, Architect, A.A.A., B.Arch, M.A.R.C.
 A. Shari Babbarwal, Architect, A.A.A., B.Arch, M.A.R.C.
 Ashish Todiwal, P.Eng., A.P.E.C.A.
 Chris Hill, P.Eng., A.P.E.C.A.

Project Manager	Drawn
D.HIDER	A.MOHAMMADZADEH
Project Leader	Checked
D.HIDER	D.HIDER

Client
ROYAL CANADIAN MOUNTED POLICE
 K DIVISION
 CONSORT DETACHMENT

Project
DETACHMENT RENOVATIONS
 CONSORT, ALBERTA

Drawing Title
MAIN FLOOR PLAN
 POWER & LIGHTING PLAN

Check Scale (may be photo reduced)
 0 1inch 0 10mm

Project No. NCCA-16-0157
 Drawing No. E02-00

