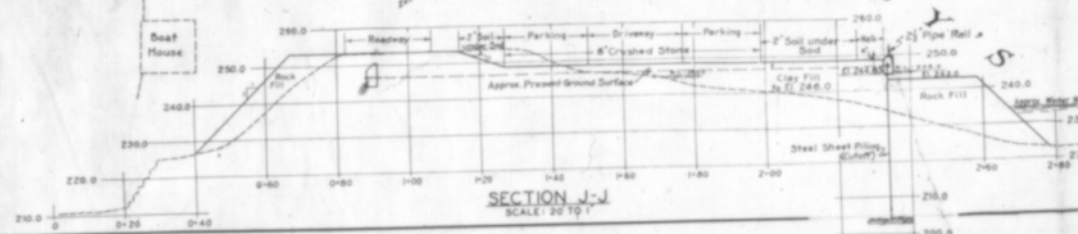


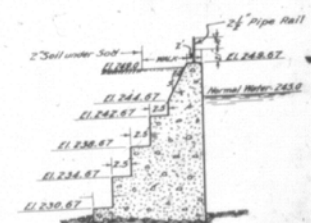
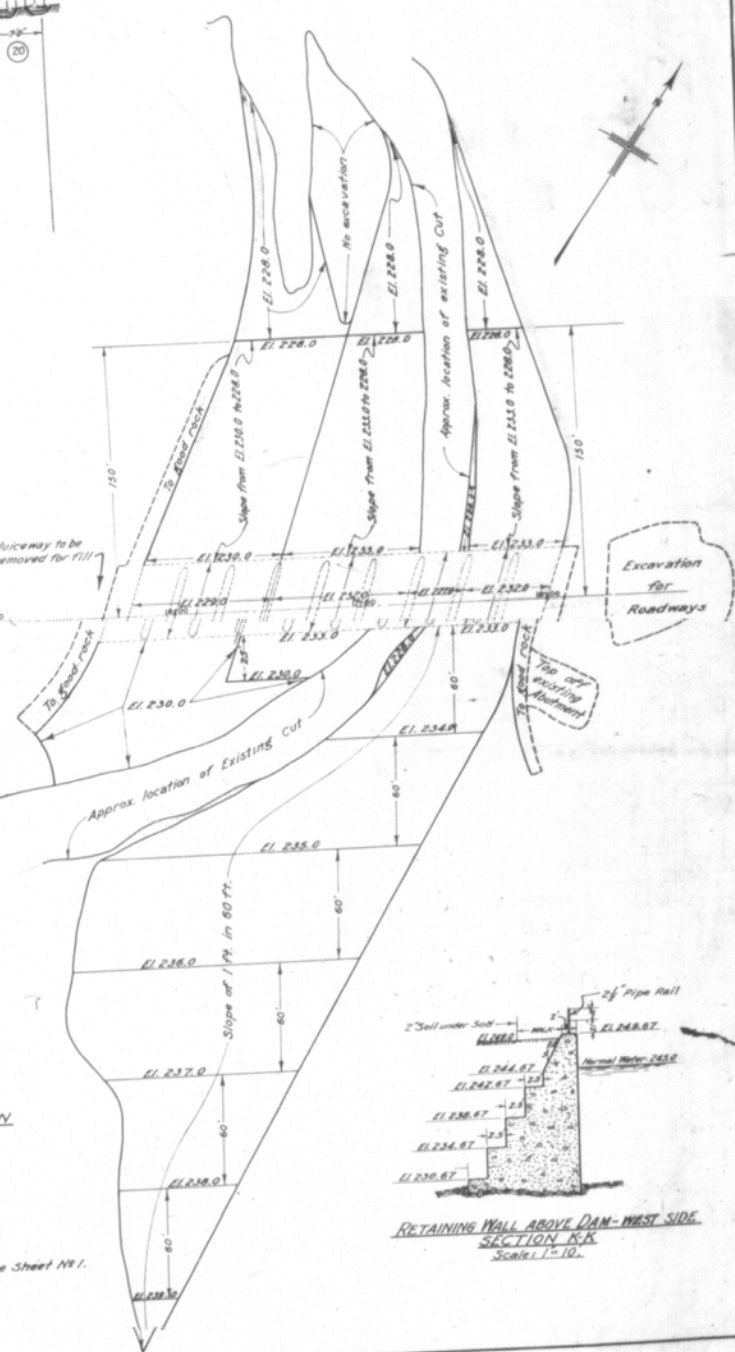
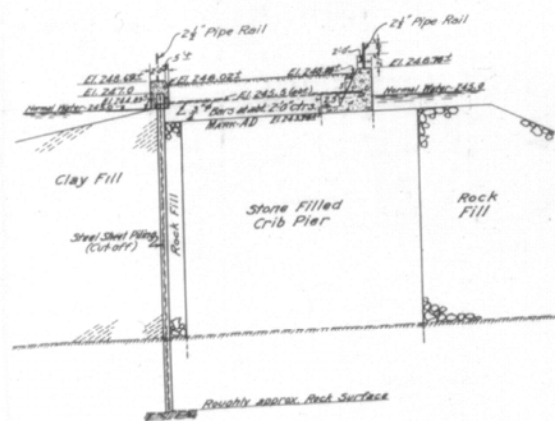
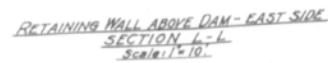
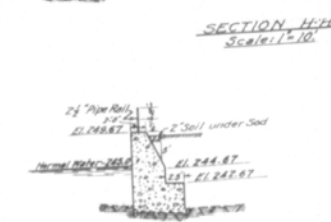
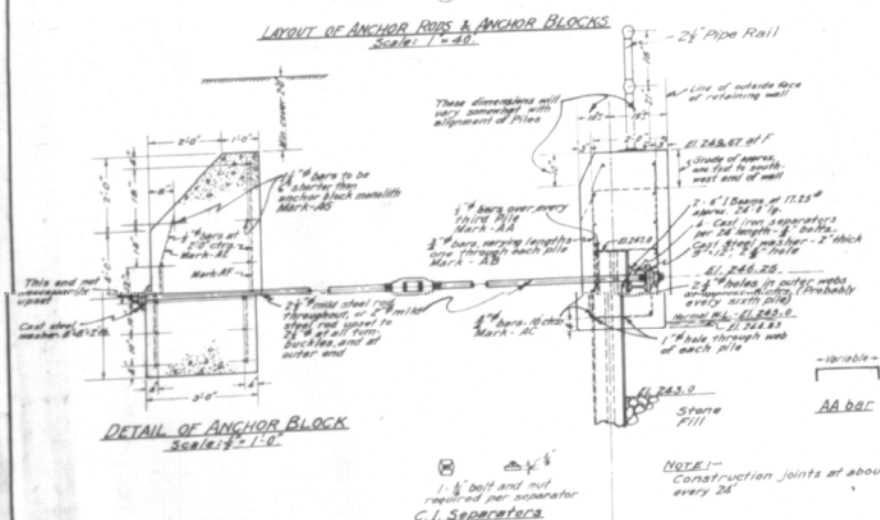
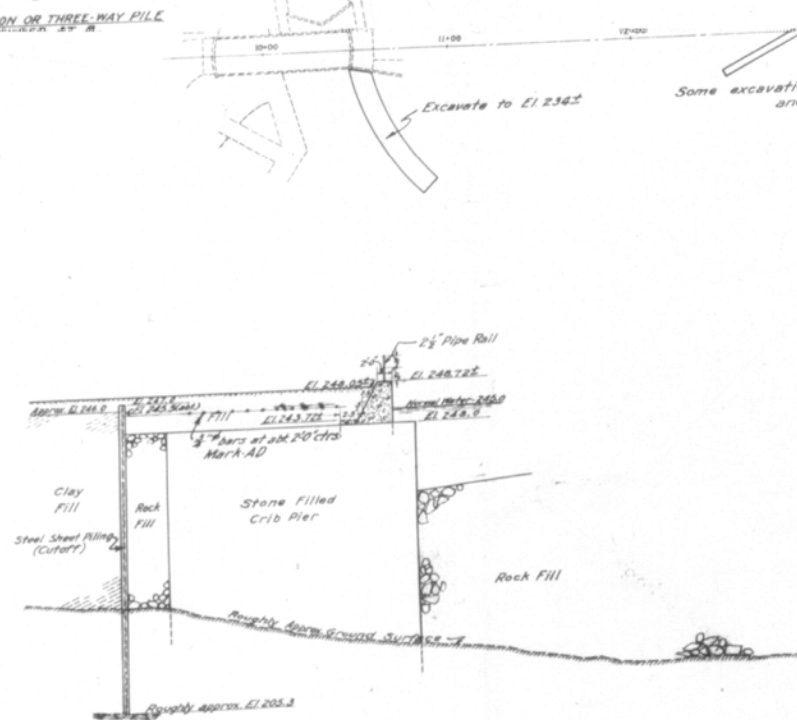
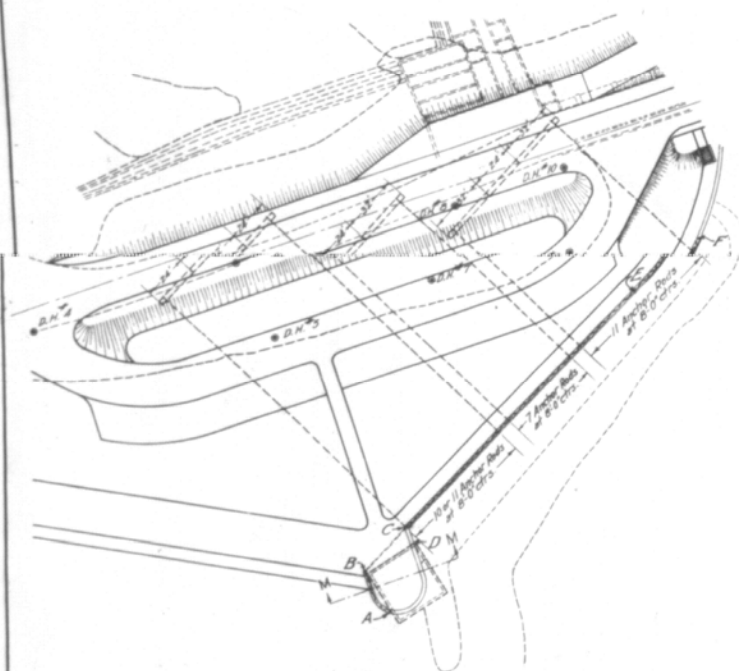
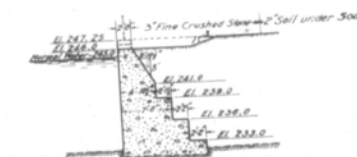
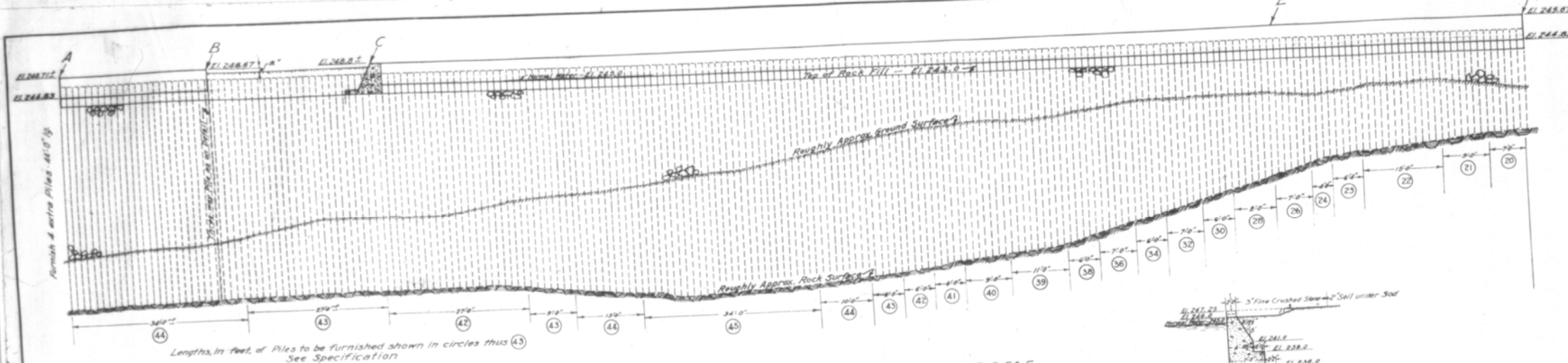
DEPARTMENT OF RAILWAYS AND CANALS
RIDEAU CANAL
GENERAL HOGSBACK DAM GRADING
GENERAL PLAN SHOWING GRADING
SCALE: 40 FT. TO 1 IN.

Chief Engineer's Office
Ottawa, June 18th 1933
W. J. D. Jones
Chief Engineer
Drawn by A. F. W.
Traced by A. F. W.
Checked by A. F. W.

NOTE: Approximate Elevations of Rock Surface are shown in Parentheses.

NOTE: For detail of Sections G, H, K and L, see Sheet No. 5.





DEPARTMENT OF RAILWAYS AND CANALS
RIDEAU CANAL
HOGSBACK DAM
EXCAVATION, CUT-OFF AND OTHER DETAILS

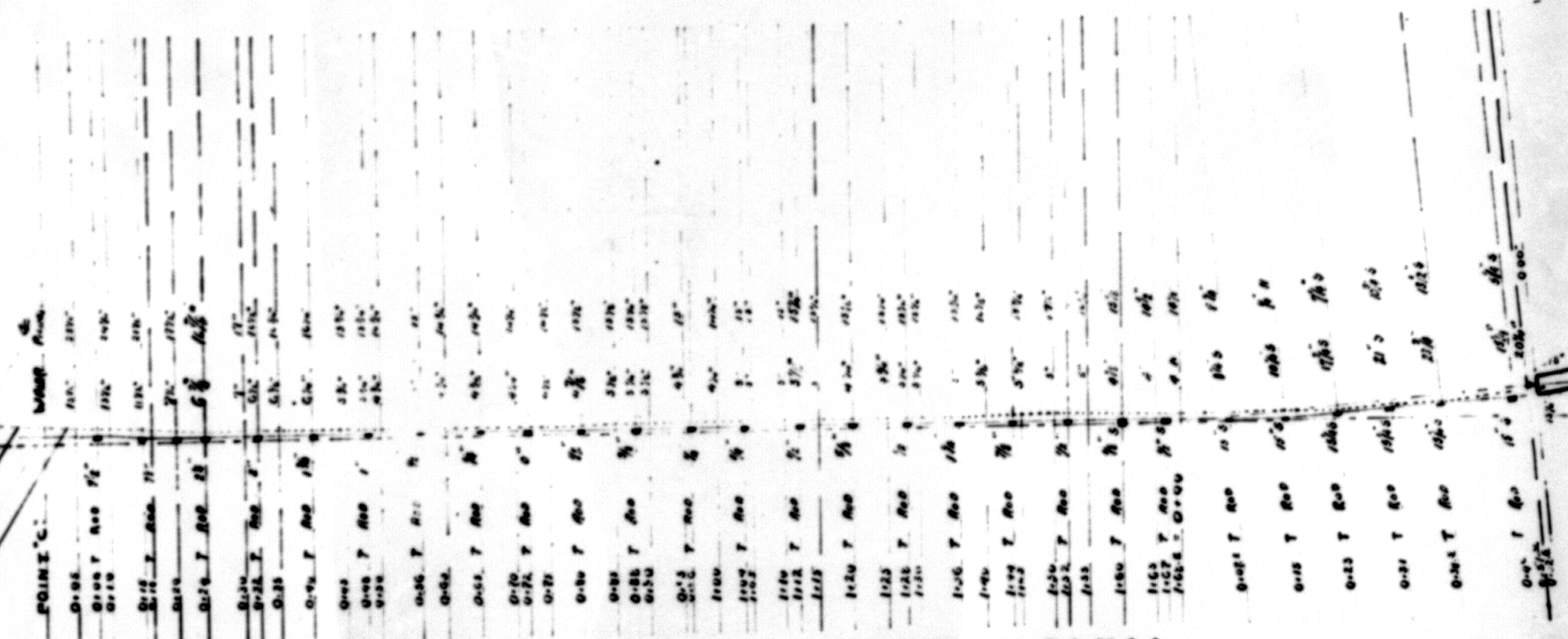
Chief Engineer's Office,
Ottawa, June 29th 1933.

Liouhua
Chief Engineer

Drawn by A. B. C.
Traced by A. B. C.
Checked by J. H. A.

4715-6
B-72

LOOKOUT



RIDEAU CANAL **HOGGSBACK**

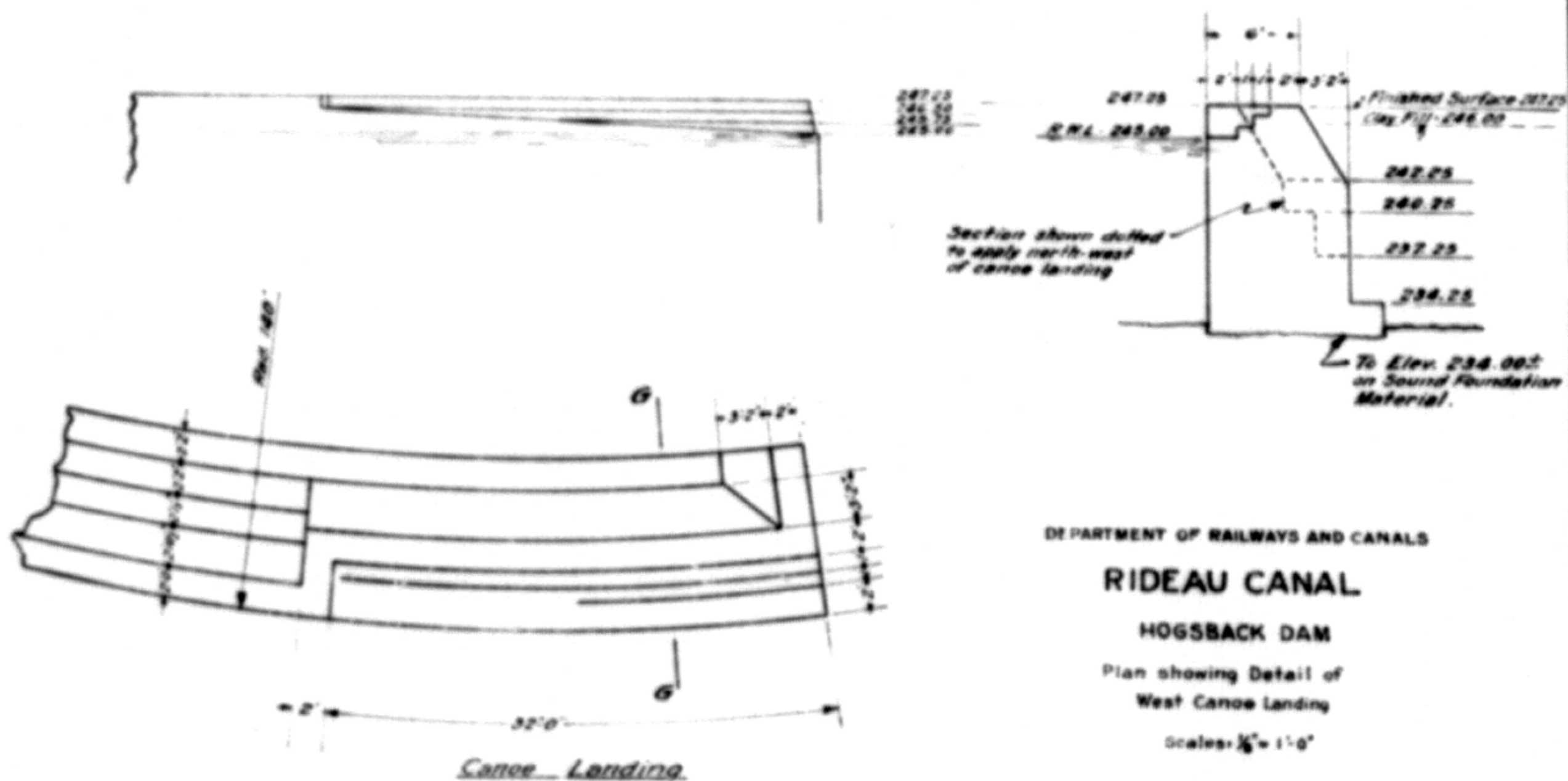
PRESENT LINE OF STEEL SHEET PILING MAY 11 1936

SCALE
1 INCH = 10 FEET

--- SURVEY LINE
--- CL SHEET PILING
--- WATER
--- NUT SOUTH END T RO

WEST
ABUTMENT

SURVEY LINE
SURVEY LINE



Chief Engineers Office,
Ottawa, Dec. 10 1935.

Chief Engineer
4757 - B-72.

R-11-118

4757 - B-72.

Chief Engineer

Chief Engineers Office,
Omaha, Nov. 16th 1933.

Scales as shown

OF WEST WALL AND CANOE LANDING

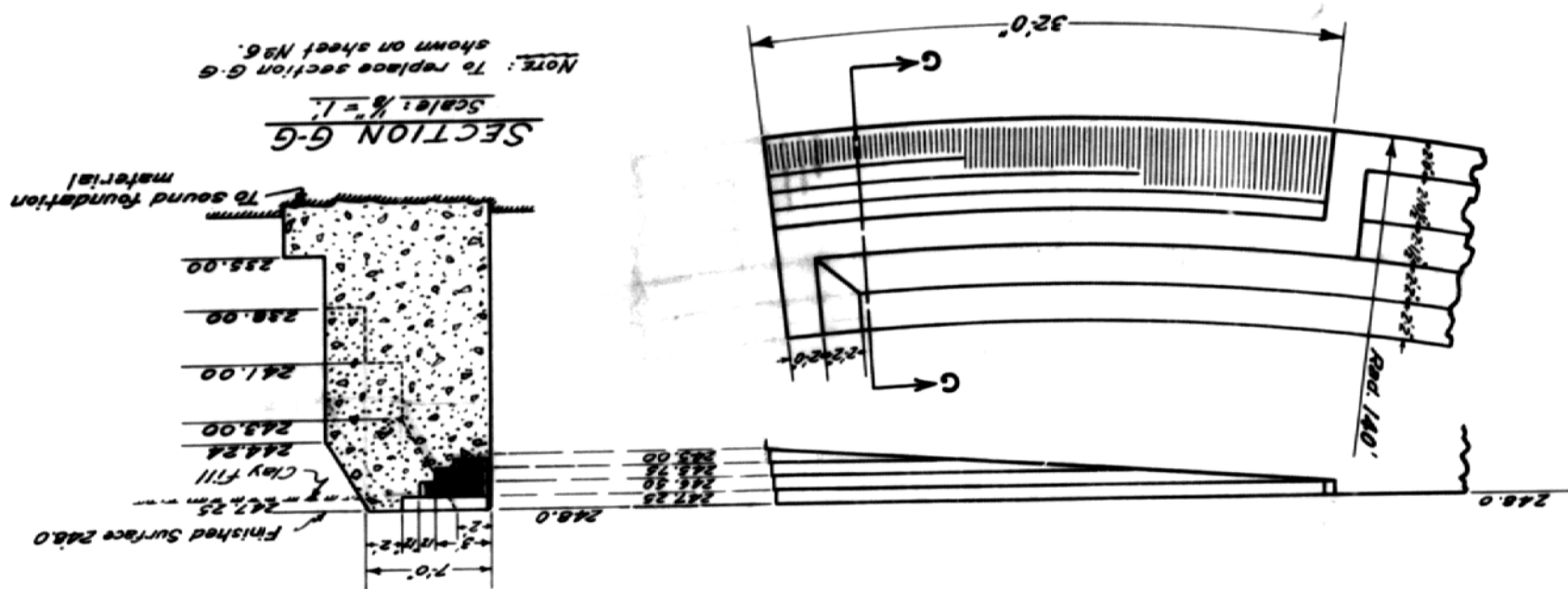
PLAN SHOWING GRADING AS REVISED AND DETAIL

HOGSBACK DAM

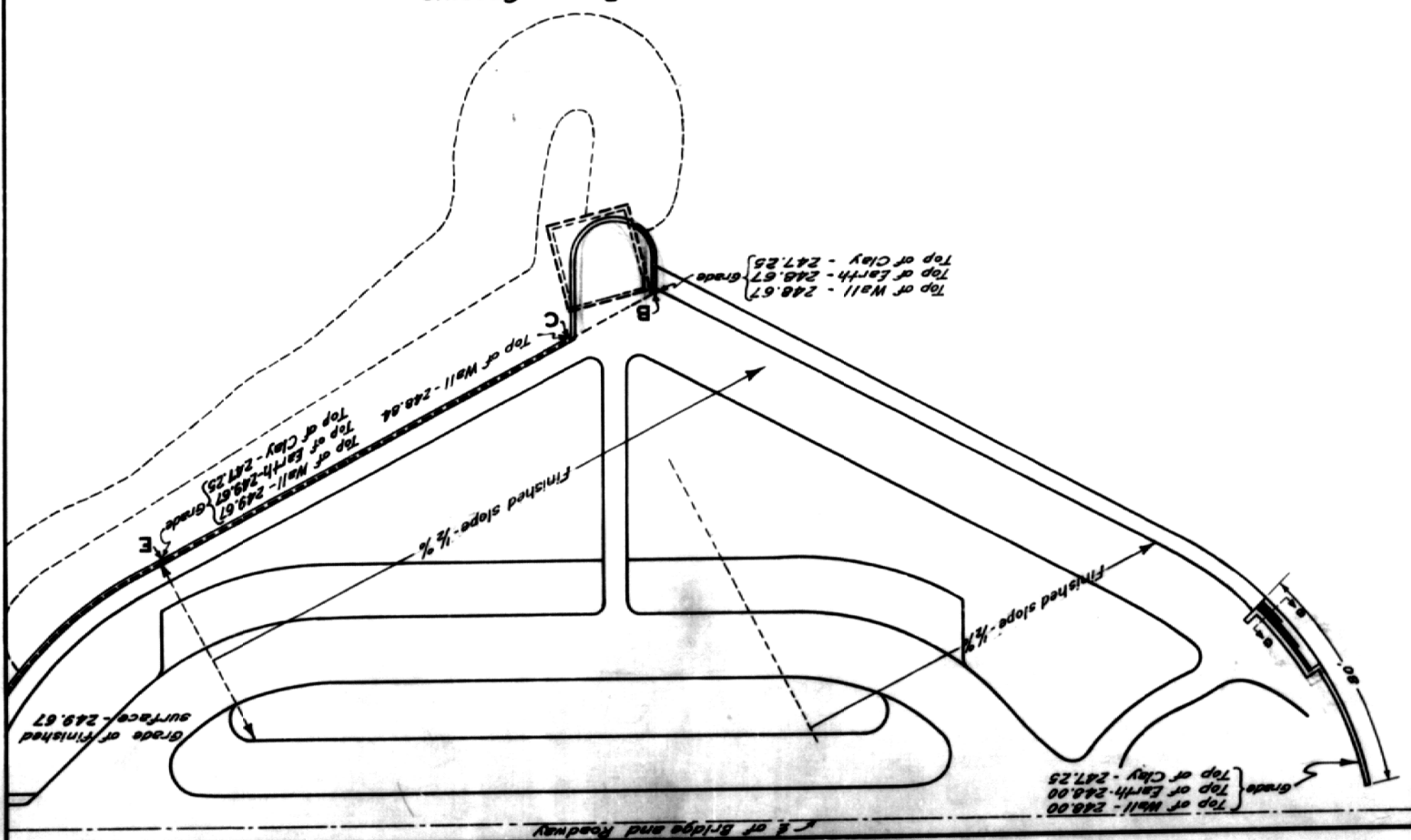
RIDEAU CANAL

DEPARTMENT OF RAILWAYS AND CANALS

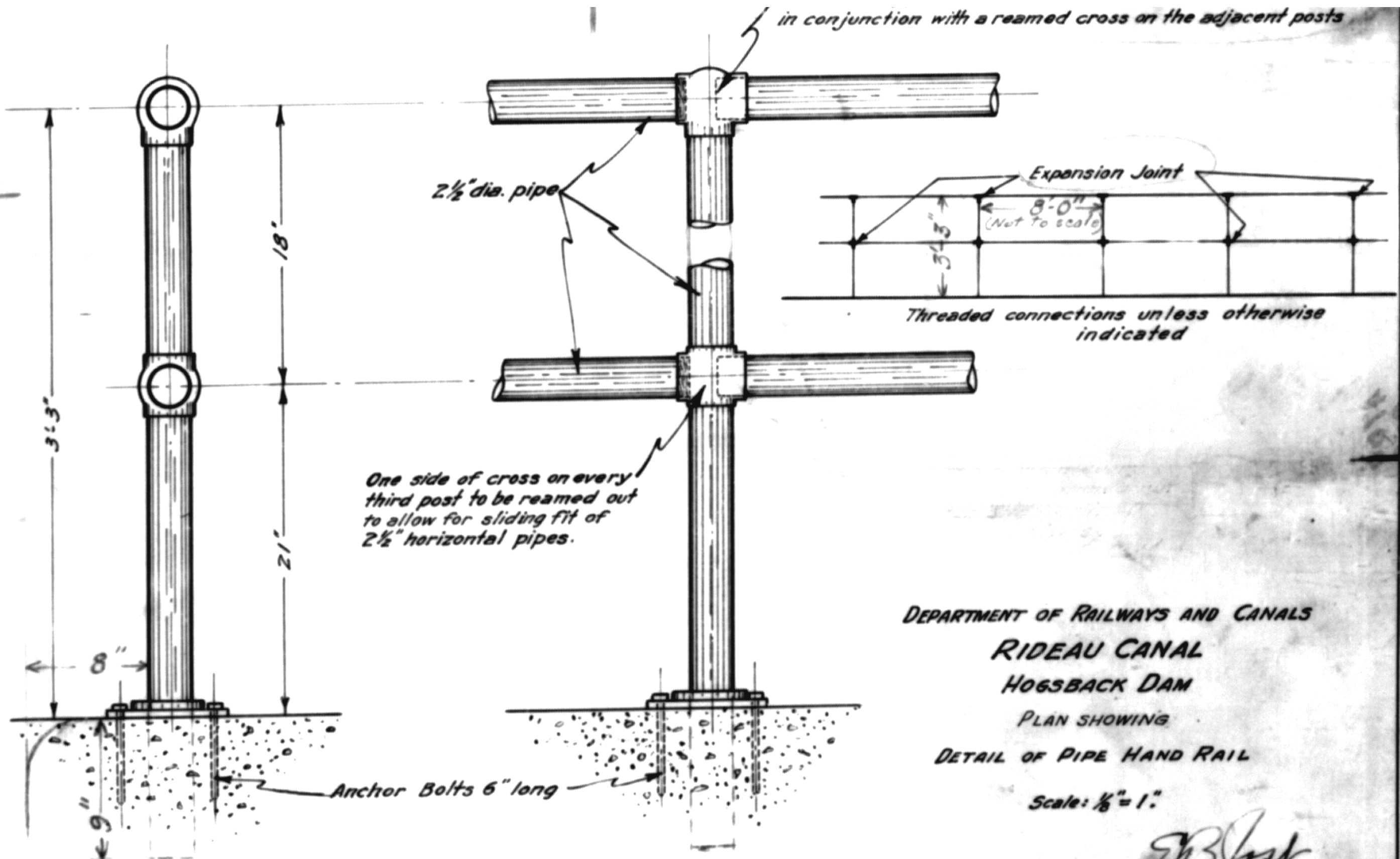
Note: This is a revision of portion of work as shown on exhibited plan No 4715.6 B-72.



PLAN SHOWING REVISED GRADING
Scale: 1"=40'

N.E. of Bridge and Roadway

811-118



DEPARTMENT OF RAILWAYS AND CANALS

RIDEAU CANAL

HOGSBACK DAM

PLAN SHOWING

DETAIL OF PIPE HAND RAIL

Scale: 1/8" = 1'

Chief Engineer's Office,
Ottawa, Dec. 13, 1935

E. B. Foster
for Chief Engineer
4766