

SIPU MUIN

INSTALLATION D'UN SYSTÈME DE PROTECTION INCENDIE DE TYPE AÉROSOL DES SALLES:

- PORT PROPULSION ENGINE
- STBD PROPULSION ENGINE
- PORT LIFT ENGINE
- STBD LIFT ENGINE
- APU CABINET

TRAVAUX EXÉCUTÉ PAR:



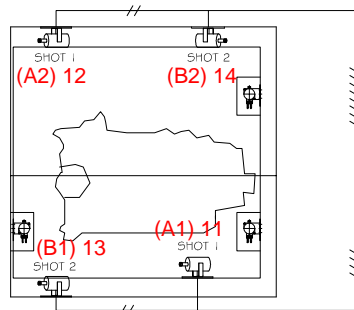
TEL: (418) 842-2942
FAX: (418) 842-3413
WWW.S-E-N.CA

NOTE GÉNÉRALE: TRAVAUX DE MODIFICATION EN ROUGE EXCUTÉ PAR PROTECTION INCENDIE GLB QUÉBEC INC.

[illegible]

A1 B1
A2 B2

STBD LIFT ENGINE

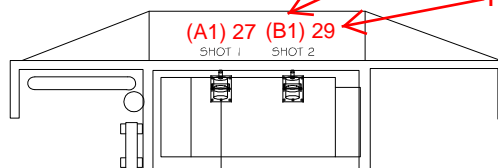


APU CABINET

SHOT

-NUMBER OF CABLE

(A1) 27 (B1) 29



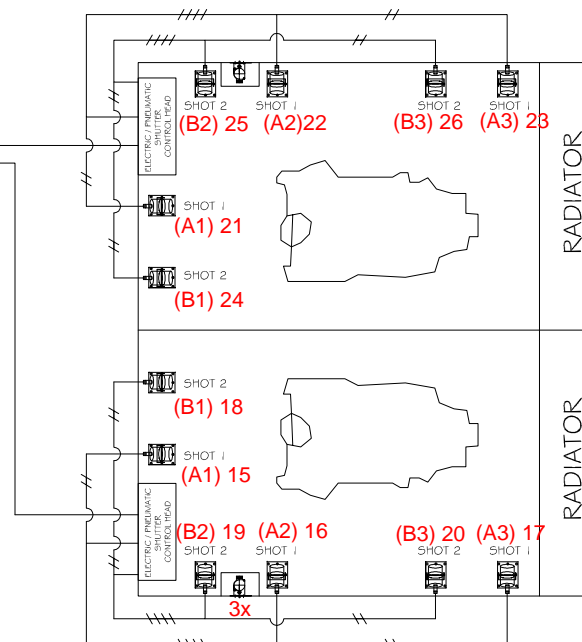
SHOT

A1	B1
A2	B2
A3	B3

DISCHARGE
CONTROL PANEL

PILOT CONTROL
ROOM

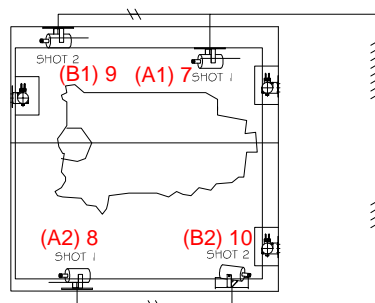
STDB PROP. ENGINE



RADIATOR

RADIATOR

PORT PROP. ENGINE



PORT LIFT ENGINE

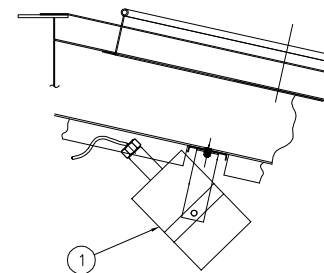
ELECTRIC / ~~PNEUMATIC~~
SHUTTER
CONTROL HEAD

NOTE:
THE POSITION OF DEVICE IN
PLAN IS INDICATIVE ONLY.

NOTE GÉNÉRALE: TRAVAUX DE MODIFICATION EN ROUGE EXCUTÉ PAR PROTECTION INCENDIE GLB QUÉBEC INC.

[illegible]

DRAWING VERIFY BY		
NO	NAME OF INGENEER	DATE



NOTE GÉNÉRALE: TRAVAUX DE MODIFICATION EN ROUGE EXCUTÉ PAR PROTECTION INCENDIE GLB QUÉBEC INC.

TRAVAUX EXÉCUTÉ PAR :

[illegible]

