

5		
4	RE-ISSUED FOR TENDER (STAMPED)	2018/08/07
3	ISSUED FOR TENDER (STAMPED)	2018/05/31
2	ISSUED FOR TENDER	2018/03/29
1	99% DESIGN SUBMISSION	2018/02/21
0	50% DESIGN SUBMISSION	2017/11/23
Revision	Description	Date

Client client

**PUBLIC WORKS &
GOVERNMENT SERVICES**

**100-167 LOMARD AVENUE
WINNIPEG, MB. R3B 0T6**

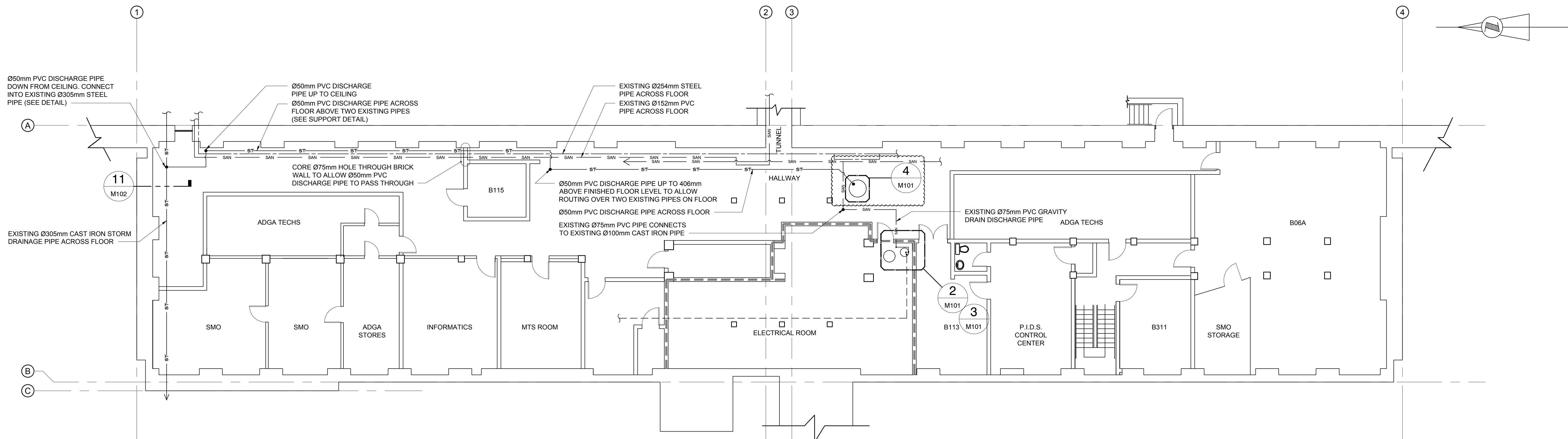
Project
**CORRECTIONAL SERVICE CANADA
STONY MOUNTAIN INSTITUTION
STONY MOUNTAIN, MB
NAB STORM DRAINAGE**

Designed by MAH	Conçu par
Drawn by JF	Dessiné par
Approved by RLG	Approuvé par
PWGSC Project Manager TIM LODGE	Administrateur de Projets TPSC
Drawing Title	Titre du dessin

**BASEMENT PLAN -
MECHANICAL PIPING
PLAN**

Project no./No. du projet R.086418.001	Drawing no./No. du dessin M101	Revision no. 4
--	--	--------------------------

1 OF 2



1 BASEMENT PLAN

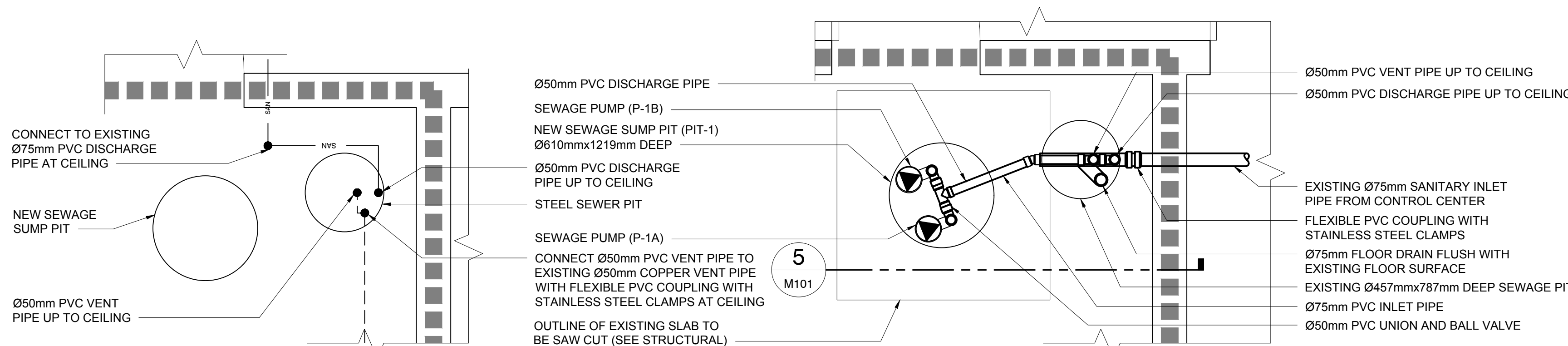
M101 SCALE: 1:100

LINE TYPES LEGEND

ITEM	SYMBOL	REMARKS
SANITARY SEWER DRAIN PIPING	SAN	
SANITARY SEWER VENT PIPING	ST	
STORM DRAIN PIPING	ST	
FIRE RATED WALLS		1 HOUR, EXISTING

PIPING SCHEMATIC LEGEND

ITEM	SYMBOL	REMARKS
EQUIPMENT - PUMP (P-#)		

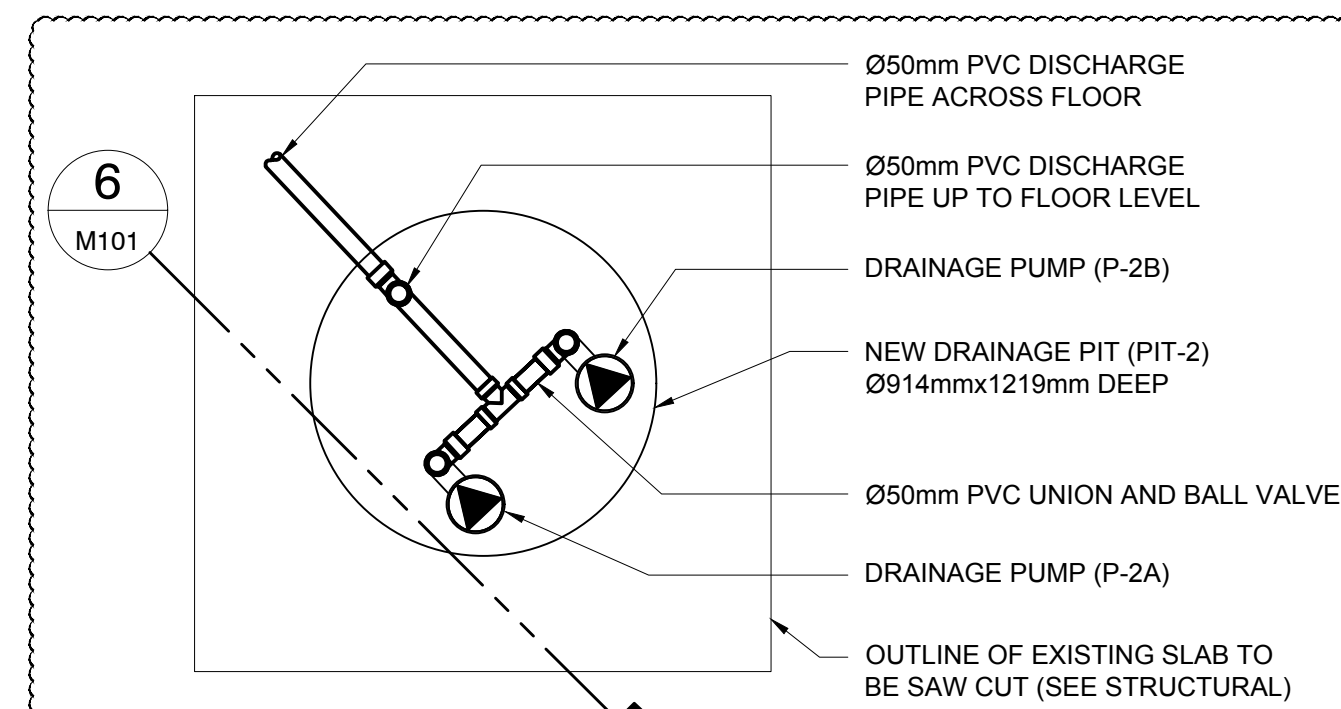


**SEWER PUMP/PIT
PIPING CONNECTIONS PLAN**

M101 SCALE: 1:20

3 SEWER PUMP/PIT PLAN

M101 SCALE: 1:20



4 NEW DRAINAGE PUMP/PIT DETAIL

M101 SCALE: 1:20

SEWER PUMP/PIT CONSTRUCTION NOTES:

PERFORM WORK IN TWO STAGES TO MINIMIZE DOWNTIME OF CONTROL CENTER WASHROOM:

STAGE 1

KEEP EXISTING SEWAGE PUMP IN SERVICE DURING THIS STAGE

1. INSTALL NEW PIT IN HOLE, DO NOT BACKFILL (SEE STRUCTURAL).
2. CORE HOLES FOR DISCHARGE, VENT, AND INLET PIPES THROUGH SIDEWALL OF EXISTING PIT. COORDINATE HOLE LOCATIONS WITH NEW PIT ASSEMBLY AND ENSURE HOLES ARE ABOVE HIGH LIQUID LEVEL IN EXISTING PIT.
3. INSTALL SEWAGE PUMPS IN NEW PIT.
4. INSTALL DISCHARGE PIPING FROM NEW SEWAGE PUMPS THROUGH WALL OF NEW PIT (ACCORDING TO MANUFACTURER'S INSTRUCTIONS) AND INTO EXISTING PIT THROUGH CORED HOLE.
5. CONNECT VENT AND INLET PIPES TO NEW PIT AND INSTALL THROUGH WALL OF EXISTING PIT. ROUTE VENT AND DISCHARGE PIPES UP TO CEILING THROUGH OPEN TOP OF EXISTING PIT. LOCATE PIPED TO ALLOW REMOVAL OF EXISTING SEWAGE PUMP.

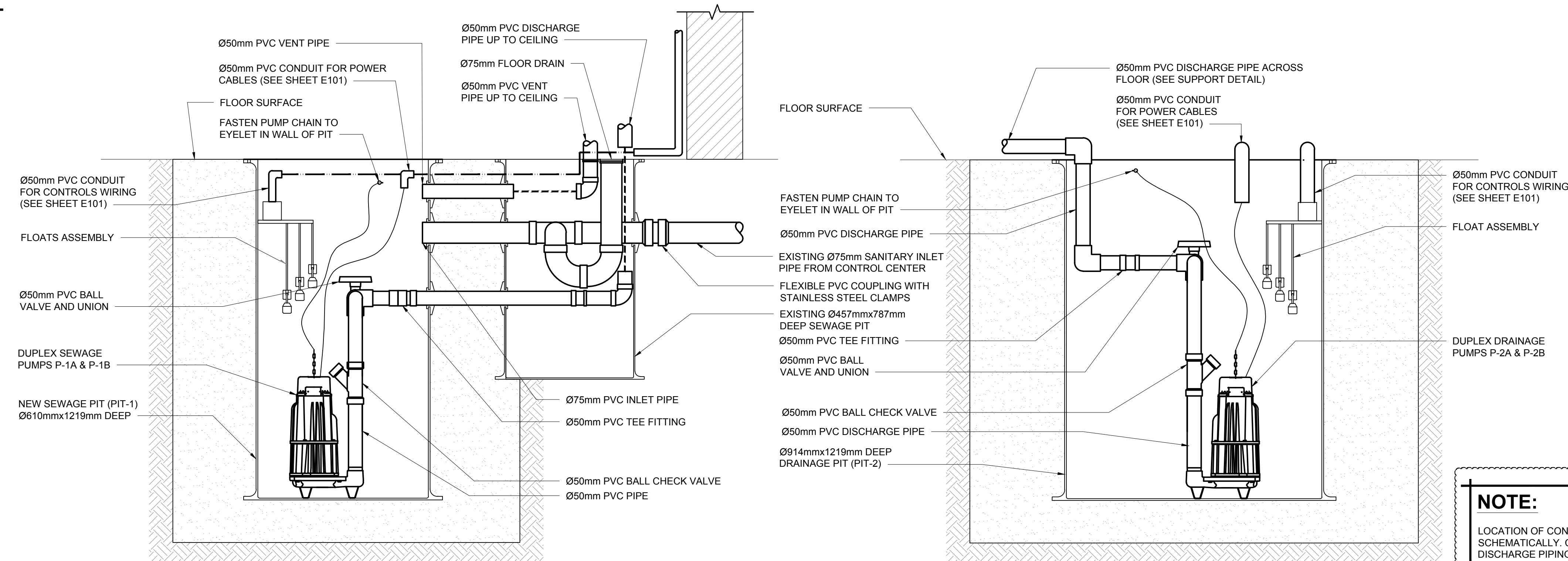
STAGE 2

REMOVE EXISTING SEWAGE PUMP FROM SERVICE ONLY WHEN NEW PUMPS ARE INSTALLED. ELECTRICAL AND CONTROLS SHOULD BE COMPLETE PRIOR TO REMOVAL OF EXISTING PUMP

1. REMOVE AND DISPOSE OF EXISTING SEWAGE PUMP, EXISTING VENT, AND DISCHARGE PIPES AS SHOWN.
2. CONNECT EXISTING 075mm INLET TO NEW 075mm INLET PIPE. USE PVC COUPLING INSIDE EXISTING PIT AND FLEXIBLE PVC COUPLING WITH STAINLESS STEEL CLAMPS UPSTREAM OF EXISTING PIT. CUT AND REMOVE SECTION OF EXISTING PIT WALL AND REMOVE FILL TO GAIN ACCESS TO PIPE UPSTREAM OF PIT.
3. INSTALL 075mm FLOOR DRAIN INLINE INLET PIPING IN EXISTING PIT. INSTALL TOP OF FLOOR DRAIN FLUSH WITH EXISTING FLOOR SURFACE. SECURE EXISTING CONDENSATE LINES FROM AIR HANDLER AND AIR CONDITIONER UNITS TO INDIRECTLY DRAIN INTO FLOOR DRAIN.
4. CONNECT NEW VENT AND DISCHARGE PIPES INTO EXISTING SYSTEMS AT CEILING HEIGHT.
5. COMMISSION NEW PUMPS PRIOR TO BACKFILLING. SEE STRUCTURAL FOR DETAILS.

DRAINAGE PUMP/PIT CONSTRUCTION NOTES:

1. INSTALL PIT IN HOLE (SEE STRUCTURAL).
2. INSTALL DRAINAGE PUMPS IN PIT AS SHOWN. INSTALL ACCORDING TO MANUFACTURER'S INSTRUCTIONS.
3. INSTALL DISCHARGE PIPING FROM PUMPS UP THROUGH STEEL GRATE COVER AND ACROSS FLOOR AS SHOWN.
4. ROUTE DISCHARGE PIPING THROUGH HALLWAY AS SHOWN AND CONNECT TO EXISTING 0305mm CAST IRON STORM DRAIN PIPE. CONNECT 075mm PVC PIPE TO 0305mm STEEL PIPE USING STEEL TAPING SADDLE (SEE DETAIL).



5 SEWER PUMP/PIT SECTION

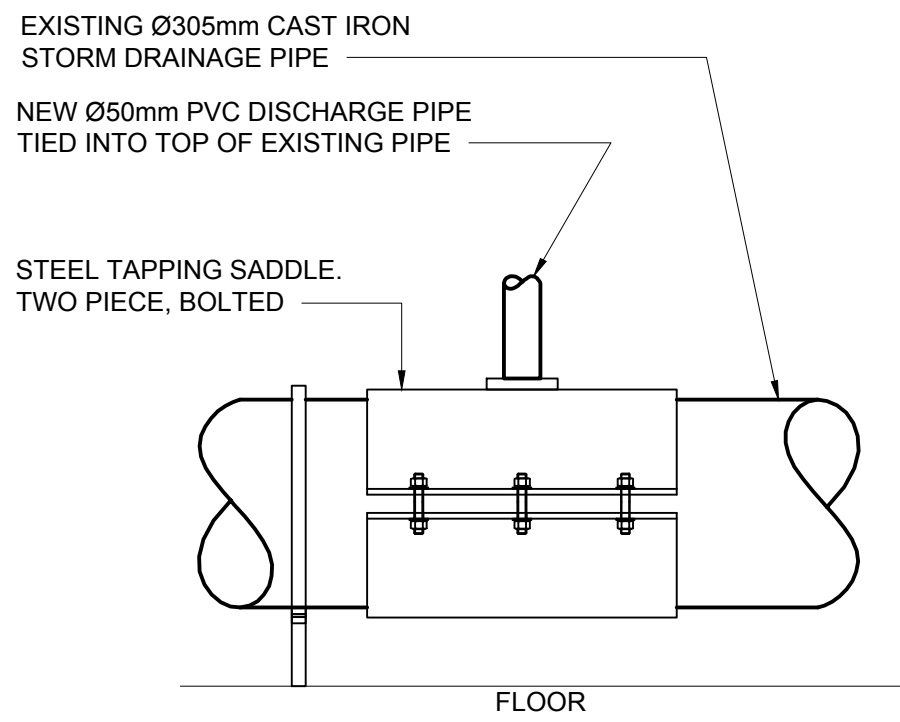
M101 SCALE: 1:10

6 DRAINAGE PUMP/PIT SECTION

M101 SCALE: 1:10

NOTE:

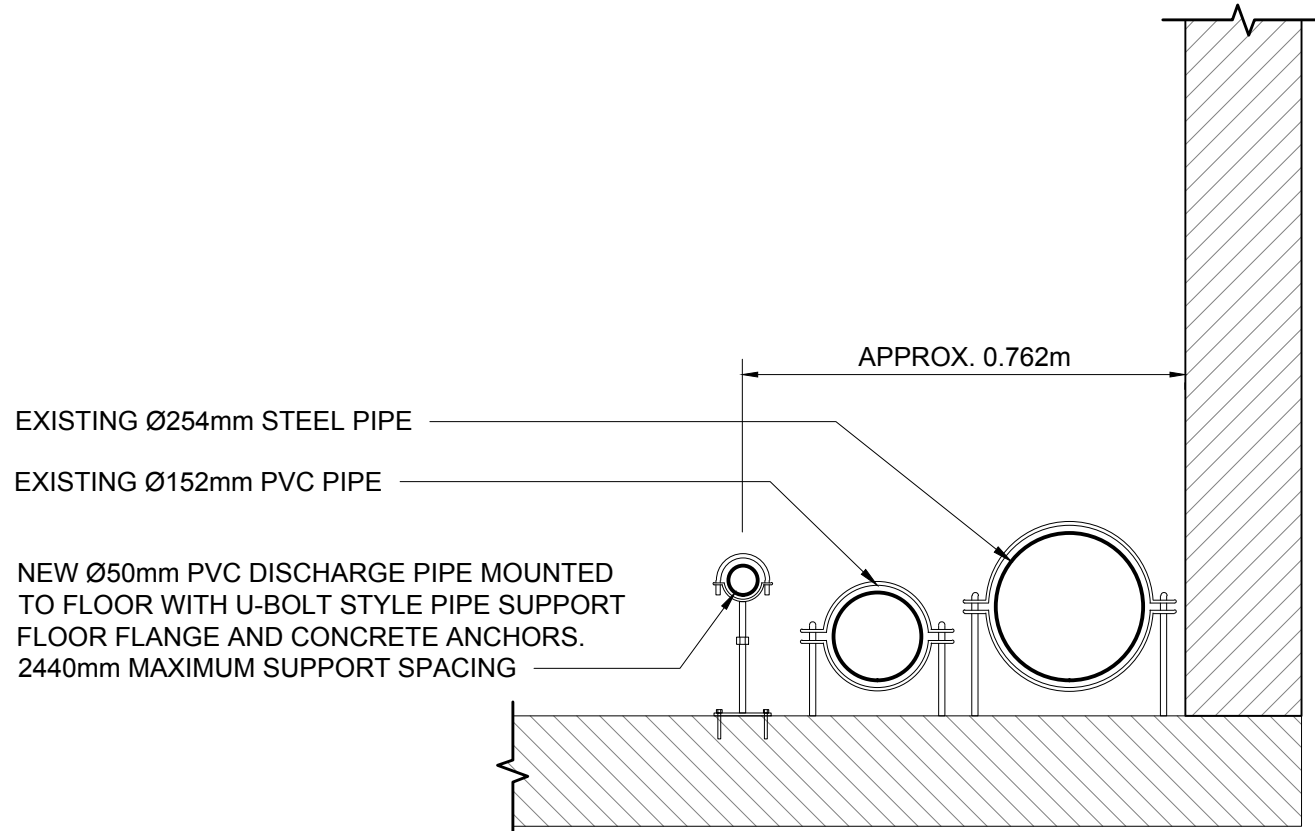
LOCATION OF CONDUIT AND FLOATS ARE SHOWN SCHEMATICALLY. COORDINATE WITH LOCATION OF DISCHARGE PIPING.



7
M102

**STORM DRAINAGE
PIPE TIE-IN DETAIL**

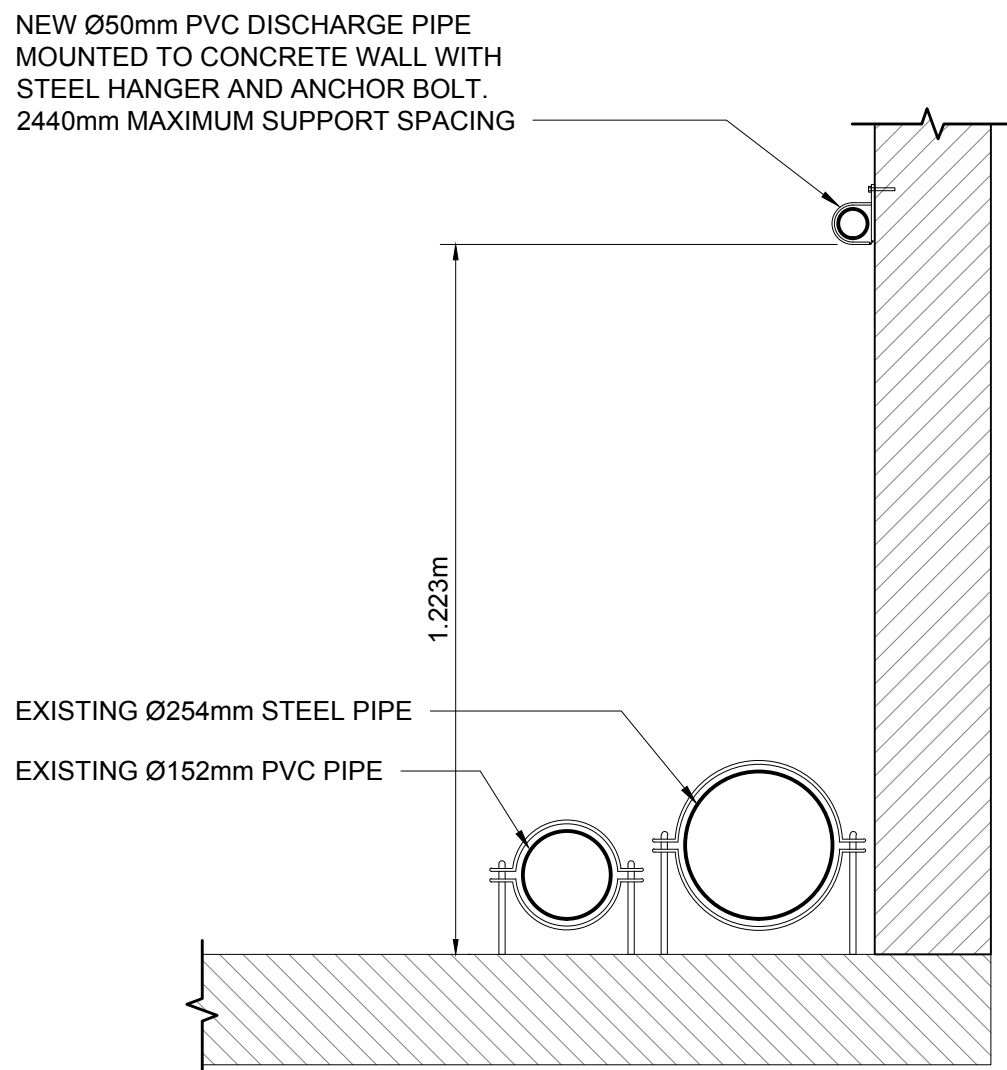
N.T.S.



8
M102

**TYPICAL
PIPE FLOOR MOUNTING DETAIL**

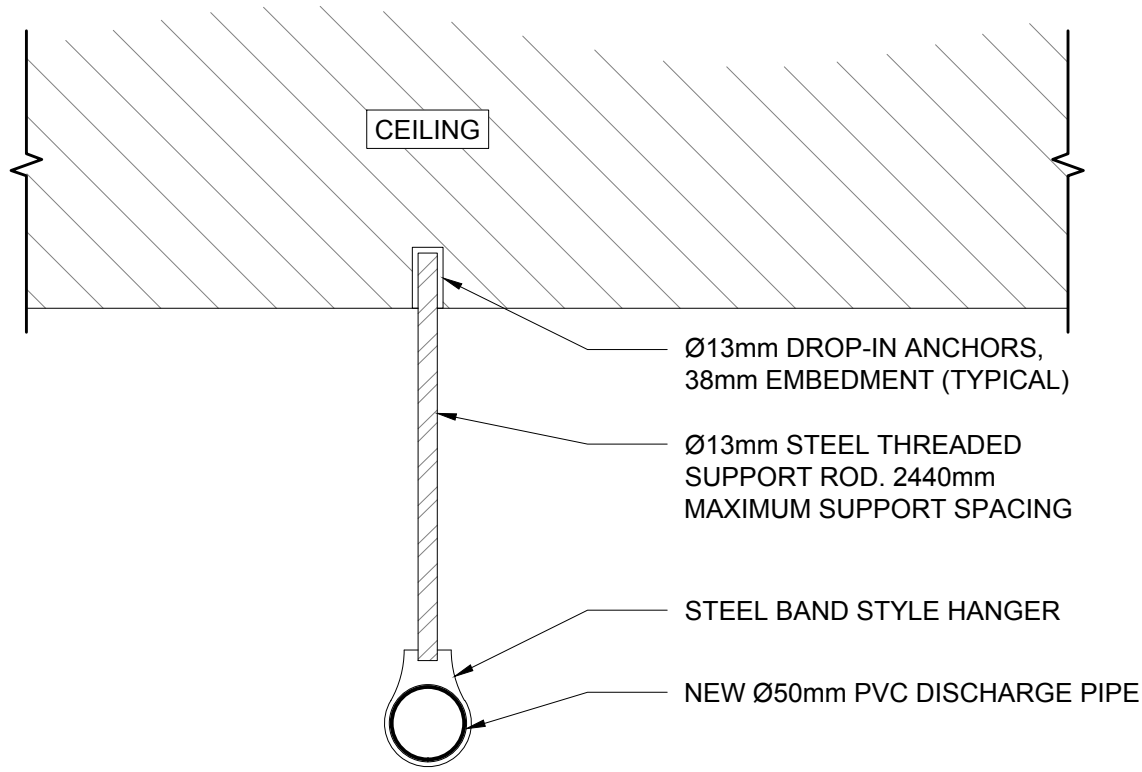
N.T.S.



9
M102

**TYPICAL
PIPE WALL MOUNTING DETAIL**

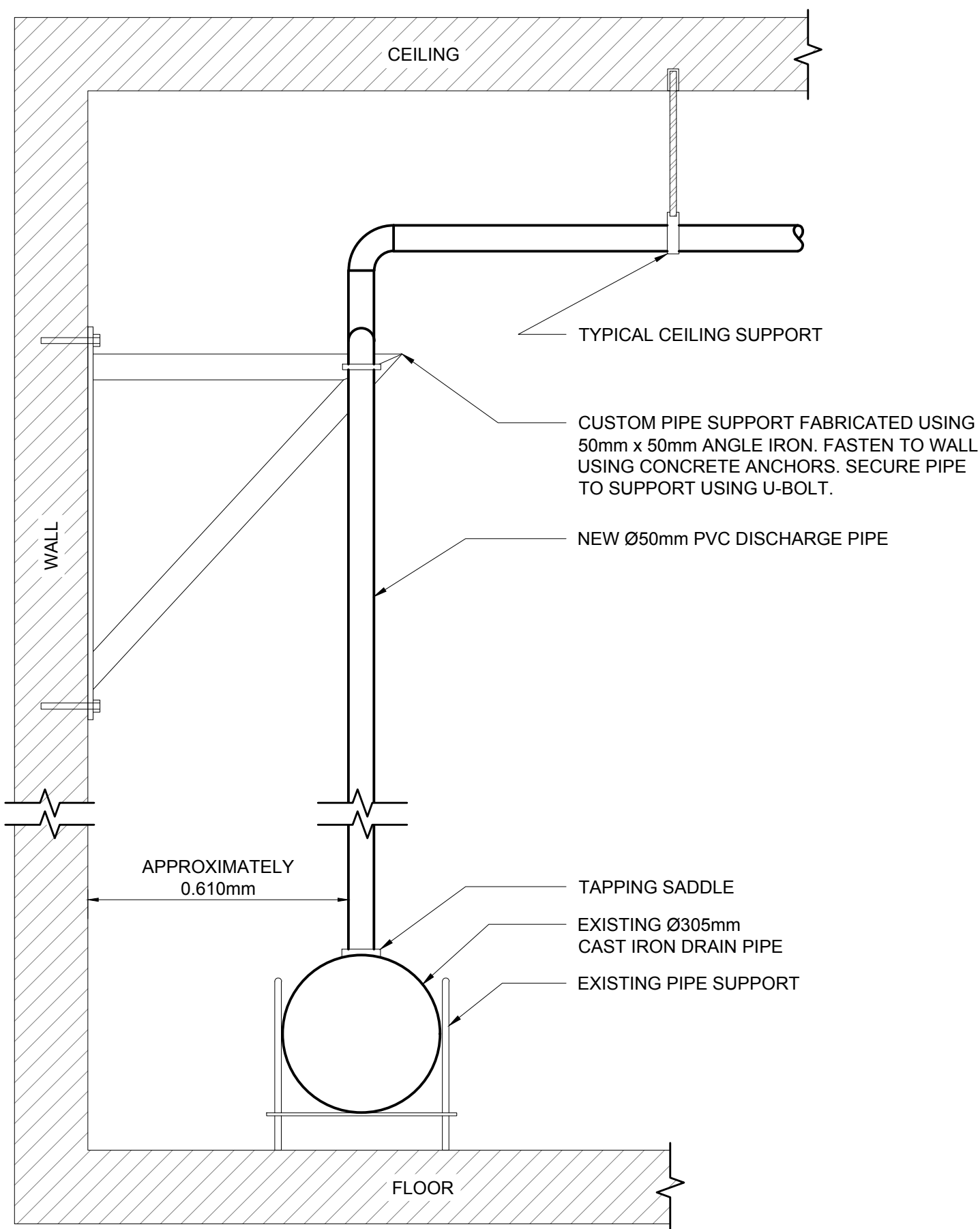
N.T.S.



10
M102

**TYPICAL
PIPE CEILING MOUNTING DETAIL**

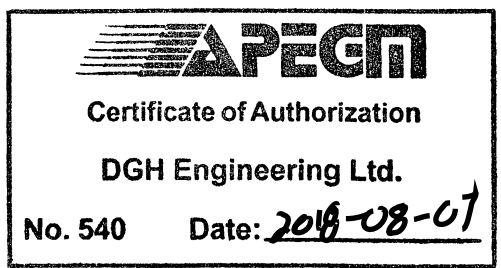
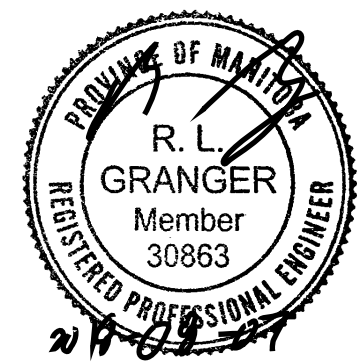
N.T.S.



11
M102

WALL MOUNT DETAIL

N.T.S.
SHEET REF.: M101



5		
4	RE-ISSUED FOR TENDER (STAMPED)	2018/08/07
3	ISSUED FOR TENDER (STAMPED)	2018/05/31
2	ISSUED FOR TENDER	2018/03/29
1	99% DESIGN SUBMISSION	2018/02/21
0	50% DESIGN SUBMISSION	2017/11/23
Revision	Description	Date

Client client

**PUBLIC WORKS &
GOVERNMENT SERVICES**

**100-167 LOMARD AVENUE
WINNIPEG, MB. R3B 0T6**

Project Project

**CORRECTIONAL SERVICE CANADA
STONY MOUNTAIN INSTITUTION
STONY MOUNTAIN, MB**

NAB STORM DRAINAGE

Designed by Conçu par
MAH

Drawn by Dessiné par
JF

Approved by Approuvé par
RLG

PWGSC Project Manager Administrateur de Projets TPSGC
TIM LODGE

Drawing Title Titre du dessin

**BASEMENT PLAN -
MECHANICAL PIPING
DETAILS**

Project no./No. du projet Drawing no./No. du dessin Revision no.

R.086418.001 M102 4

2 OF 2