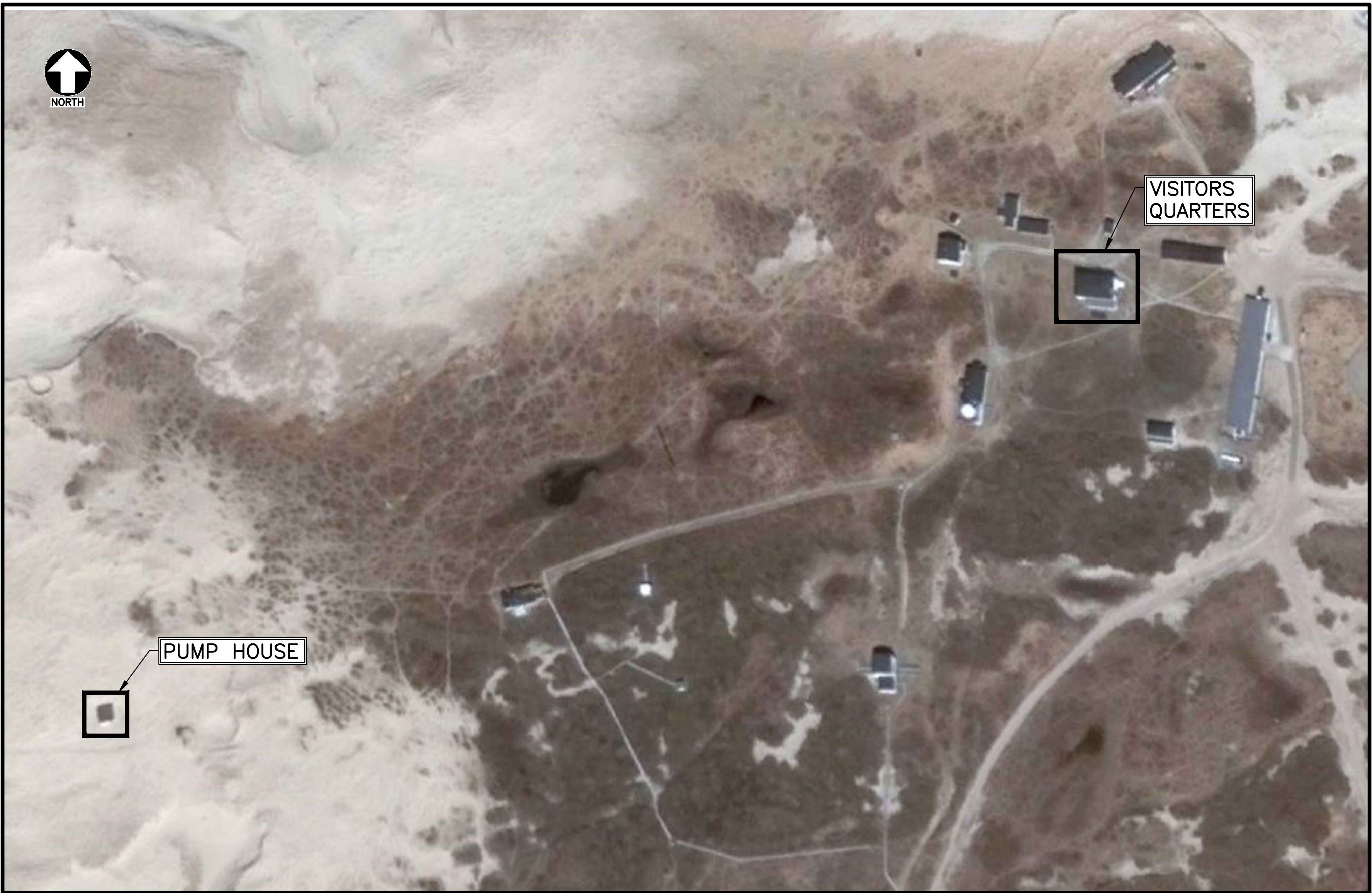


Contract No. 170825.01

SABLE ISLAND WATER INFRASTRUCTURE UPGRADE

DRAWING LIST	
Drawing Number	Drawing Title
000	COVER SHEET
PROCESS	
P01	PROCESS FLOW DIAGRAM
P02	PUMP HOUSE EXISTING AND PROPOSED PLANS
ELECTRICAL	
E01	LEGEND, PLANS & SINGLE LINE DIAGRAM
E02	SCHEDULES

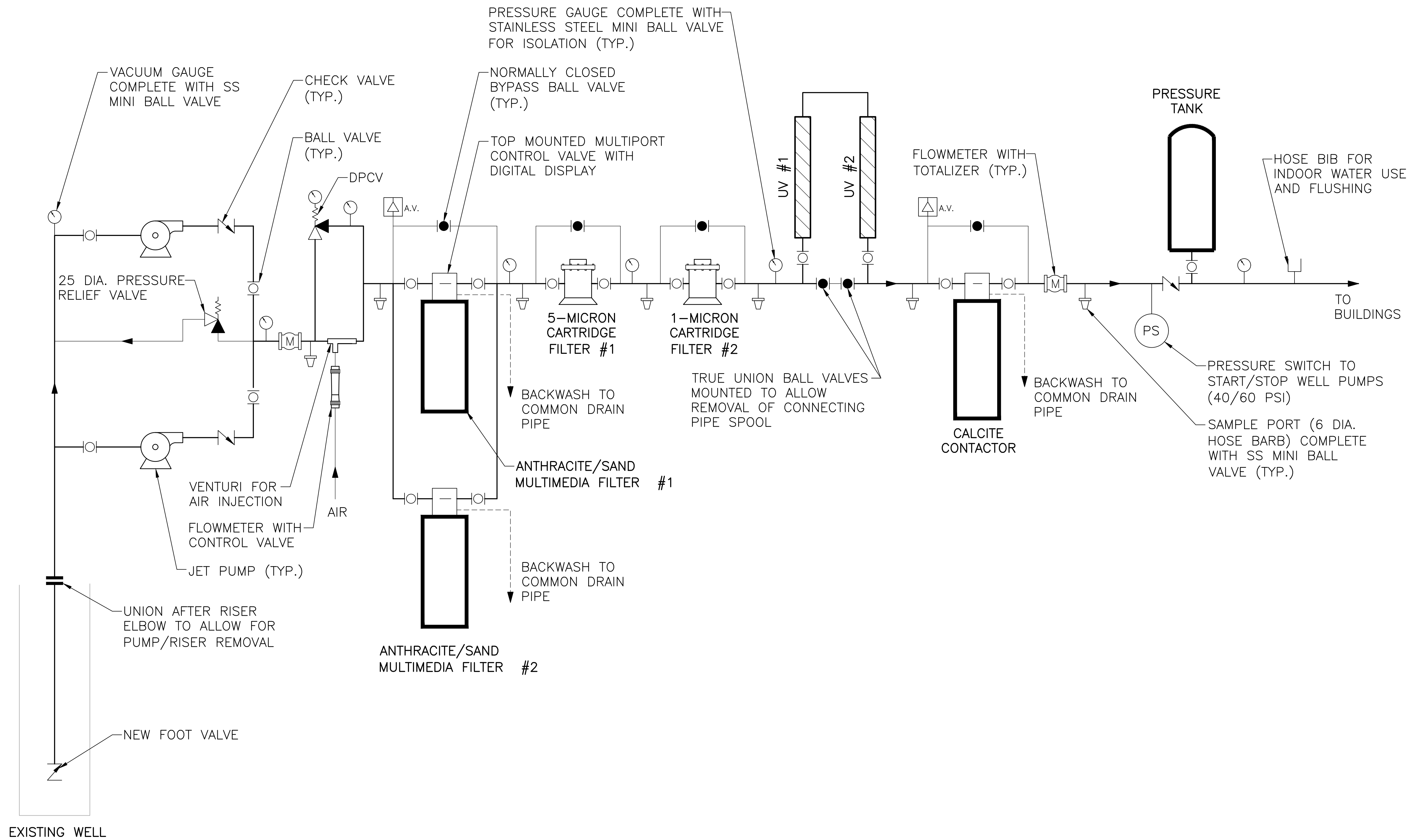


Project No. 170825.01

ISSUED FOR
TENDER

MAY 17, 2018

DRAWING NAME: K:\PROJECTS\170825.01 SABLE ISLAND NATIONAL PARK RESERVE WATER\20 CAD\06 PROCESS\170825.01_P01.DWG LAYOUT NAME: P01 DATE: DATE: May-14-18 3:56:38 PM CAD OPERATOR: WAJARI



NOTES:

0	ISSUED FOR TENDER	MAY 17/18	BB
B	ISSUED FOR APPROVAL	APR 27/18	BB
A	ISSUED FOR 100% REVIEW	FEB 28/18	BB
No.	Description	Date	By

Revision or Issue

SABLE ISLAND WATER
INFRASTRUCTURE UPGRADE

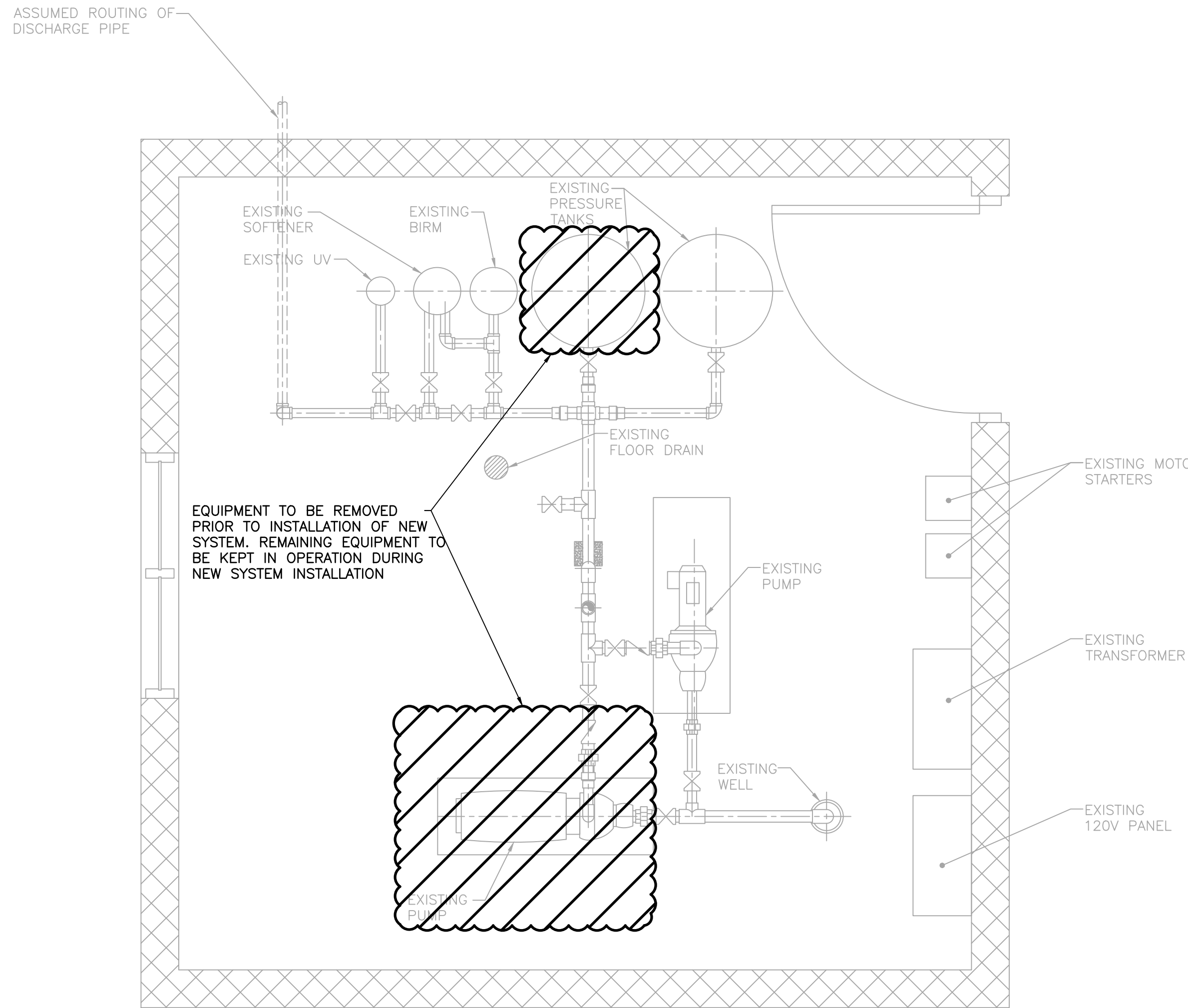
PROCESS

PROCESS FLOW
DIAGRAM

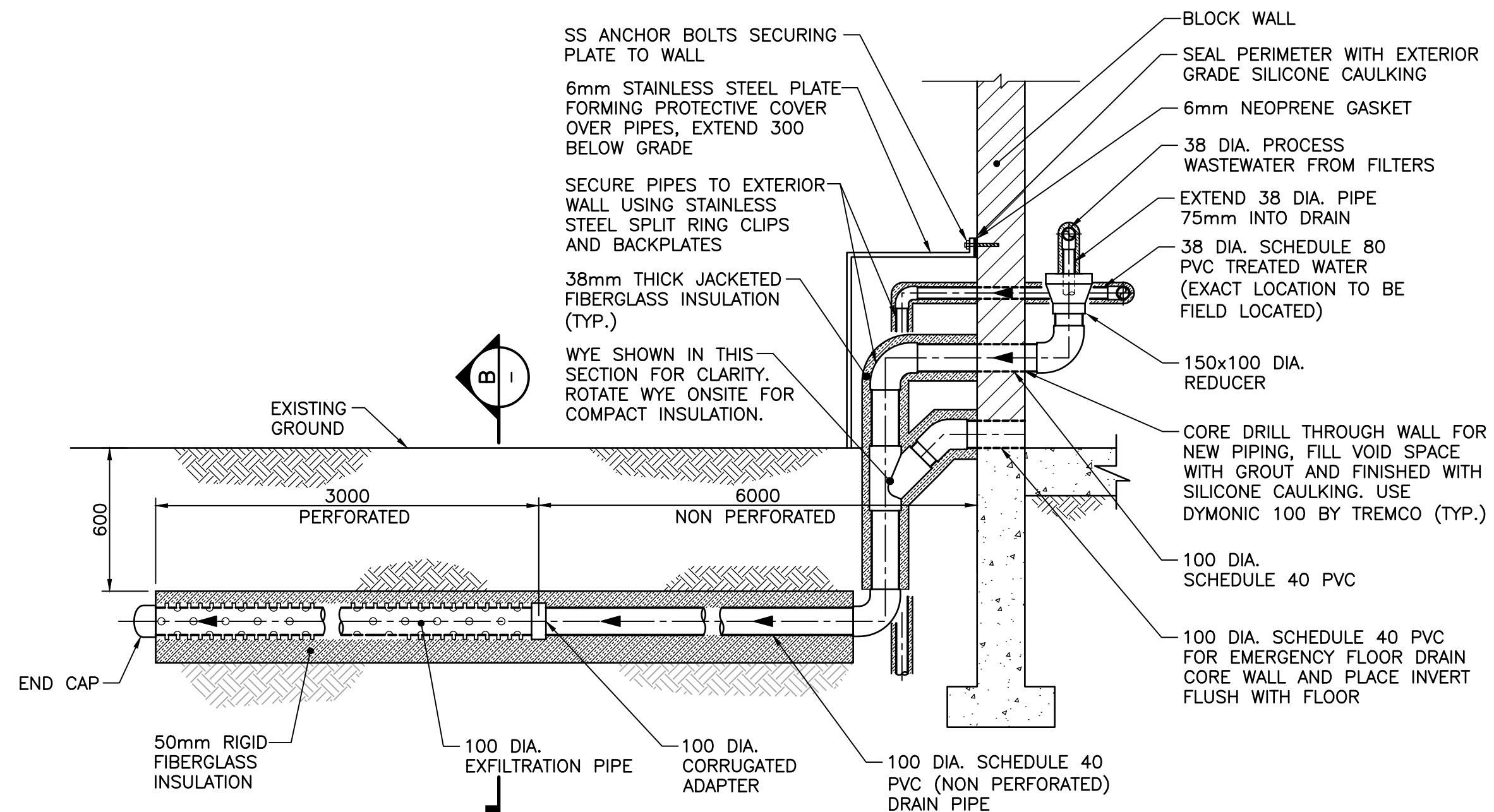


CBCL No 170825.01	Contract No	Date SEPT 2017	Scale NTS
Designed BB	Drawn MYA	Checked WD	Approved
Sheet No 1 of 2	Drawing No P01		

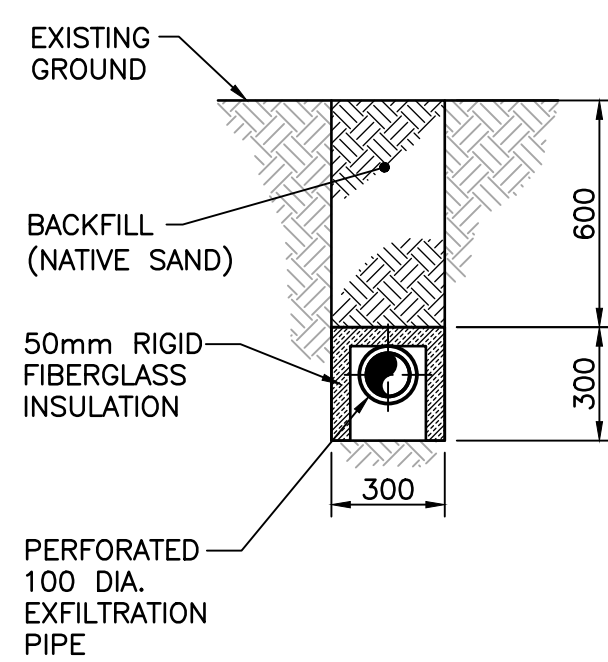
DRAWING NAME: \\P02\DATA\DATA\PROJECTS\170825.01 SABLE ISLAND NATIONAL PARK RESERVE WATER\30 CAD\08 PROCESS\170825.01_P02.DWG LAYOUT NAME: P02 DATE: 15-11-18 1:35:28 PM CAD OPERATOR: MALAWI



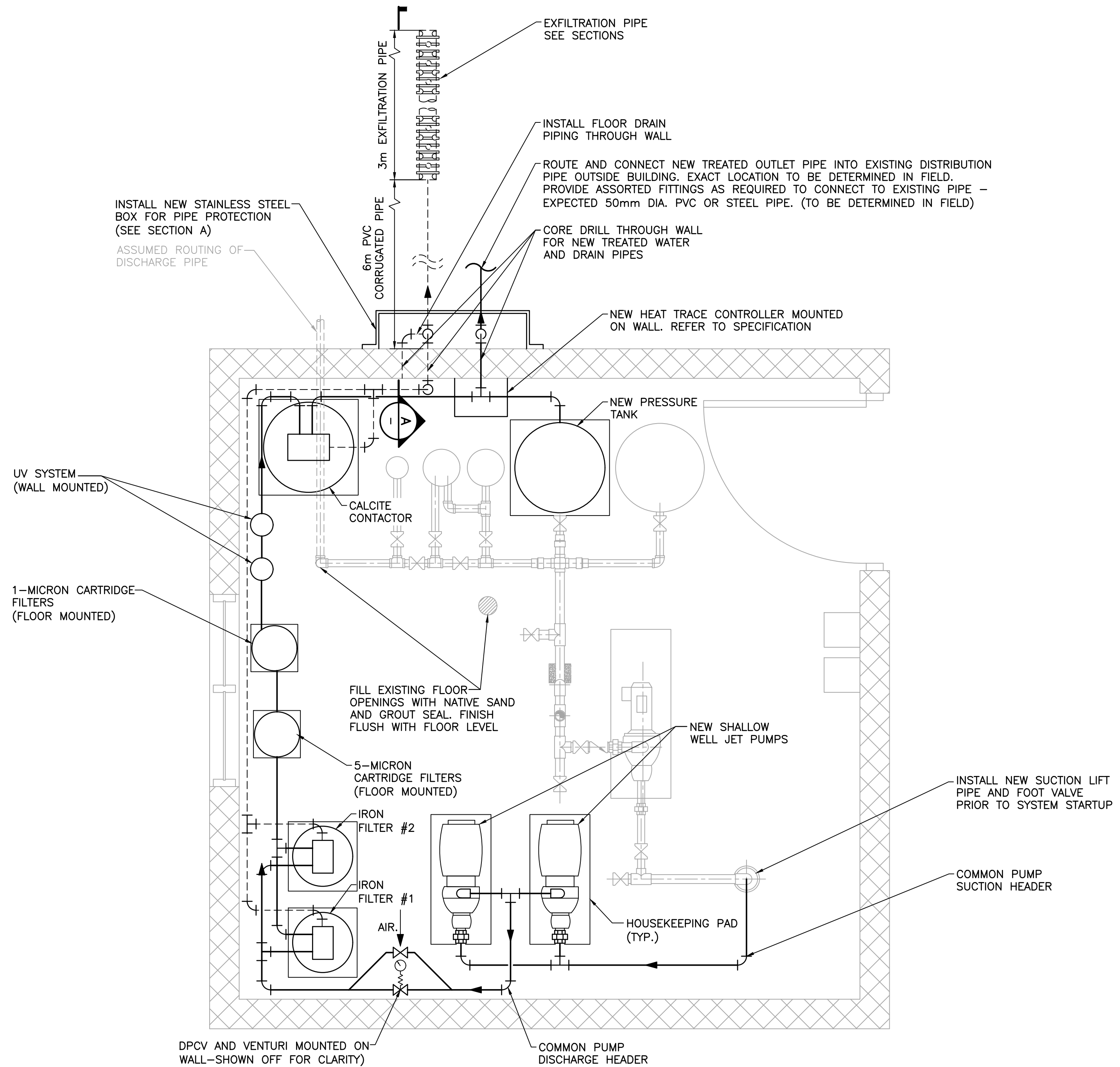
PLAN- EXISTING PUMP HOUSE
1:20



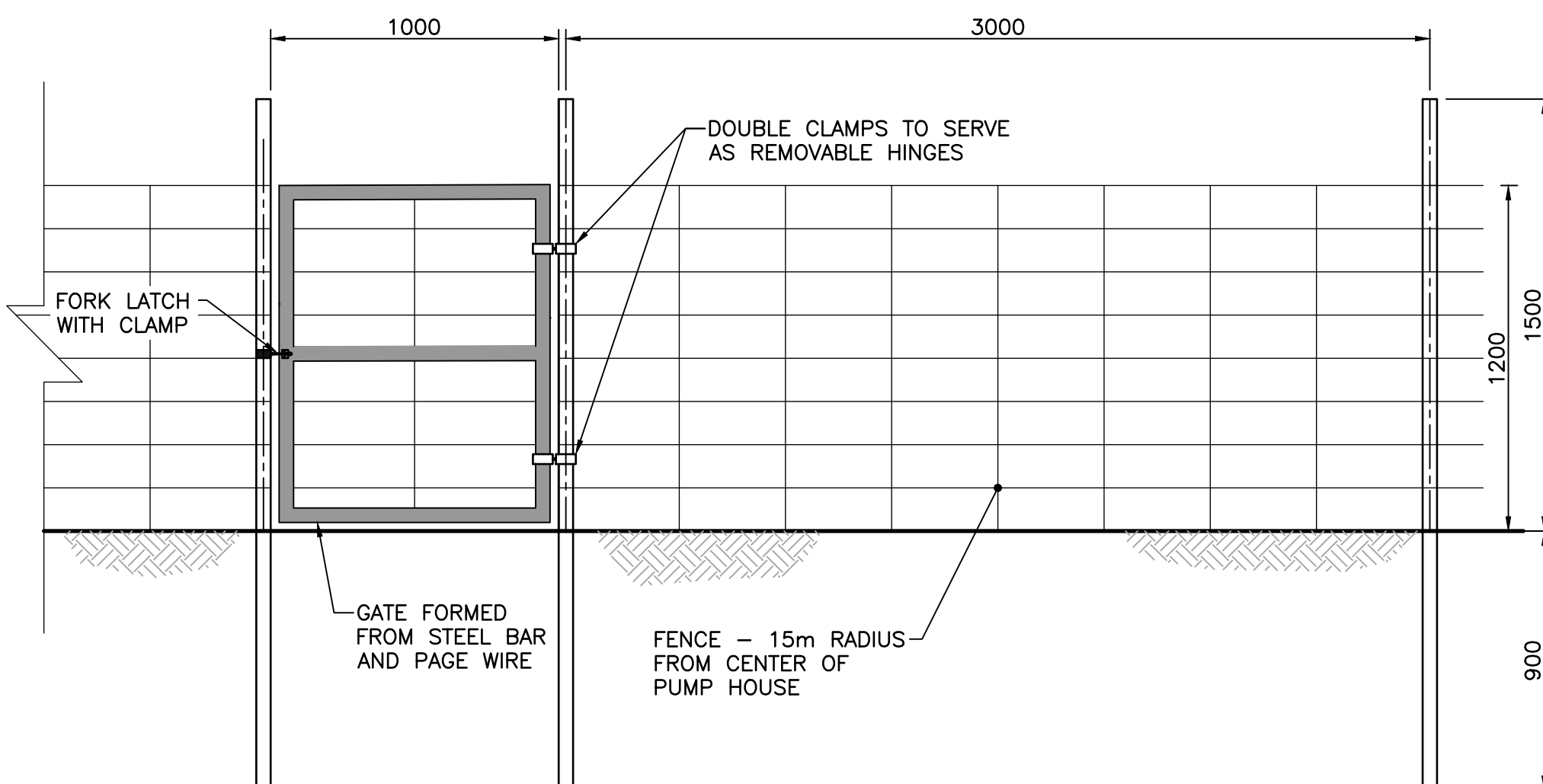
A SECTION- EXFILTRATION TRENCH AND PIPE
1:20



B SECTION
1:20



PLAN- NEW PUMP HOUSE
1:20



DETAIL- TYPICAL FENCE
1:20

NOTES:

1. ALL EXISTING EQUIPMENT, PIPE, VALVES AND SUPPORTS TO BE REMOVED AFTER NEW SYSTEM COMPLETED.
2. SUPPLY 50mm THICK CONCRETE HOUSEKEEPING PADS BENEATH ALL NEW FLOOR-MOUNTED EQUIPMENT. SECURE PADS TO EXISTING CONCRETE FLOORS USING SS ANCHOR BOLTS.
3. ALL MAJOR PIPING TO BE 38mm PVC SCHEDULE 80 AND INSULATED ACCORDING TO SPECIFICATIONS UNLESS OTHERWISE NOTED. FITTINGS TO BE THREADED OR SOLVENT WELDED. PROVIDED ALL NECESSARY FITTINGS AND ADAPTERS REQUIRED TO MAKE CONNECTIONS TO NEW EQUIPMENT. ALL PIPE AND EQUIPMENT OPENINGS TO BE COVERED AND PROTECTED PRIOR TO INSTALLATION. WIPE DOWN OPENINGS WITH DISINFECTANT (BLEACH) SOLUTION AND ALLOW TO FULLY DRY PRIOR TO CONNECTION.
4. PROVIDE PIPE STAYS/CLIPS/HANGERS AT 1m INTERVALS MAXIMUM TO MINIMIZE PIPE VIBRATION DURING OPERATION. BOLT PIPE SUPPORTS TO FLOOR OR WALL USING STAINLESS STEEL FASTENERS ONLY. ELBOWS AND TEES TO BE SUPPORTED WITHIN 150mm EACH SIDE. PIPES TO BE MOUNTED AS NEAR TO WALLS AND FLOOR AS POSSIBLE WHILE ALLOWING SUFFICIENT CLEARANCE FOR INSTALLATION AND ACCESS TO ALL EQUIPMENT AND VALVES.
5. SCOPE OF WORK INCLUDES INSTALLATION OF FLOW METER WITH TOTALIZER AND PRESSURE TANK AT THE VISITOR'S QUARTERS IN BASEMENT. EXACT LOCATION TO BE DETERMINED IN THE FIELD. BUILDING PLUMBING IS COPPER, CONTRACTOR REQUIRED TO PROVIDE PIPING AND FITTINGS AS REQUIRED TO CONNECT NEW PRESSURE TANK.

No.	Description	Date	By
0	ISSUED FOR TENDER	MAY 17/18	
B	ISSUED FOR APPROVAL	APR 27/18	BB
A	ISSUED FOR 100% REVIEW	FEB 28/18	BB

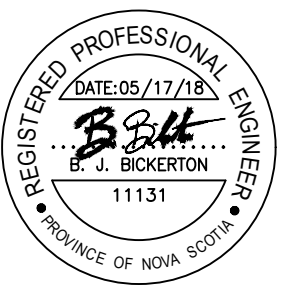
Revision or Issue

SABLE ISLAND WATER INFRASTRUCTURE UPGRADE

PROCESS PUMP HOUSE EXISTING AND PROPOSED PLANS

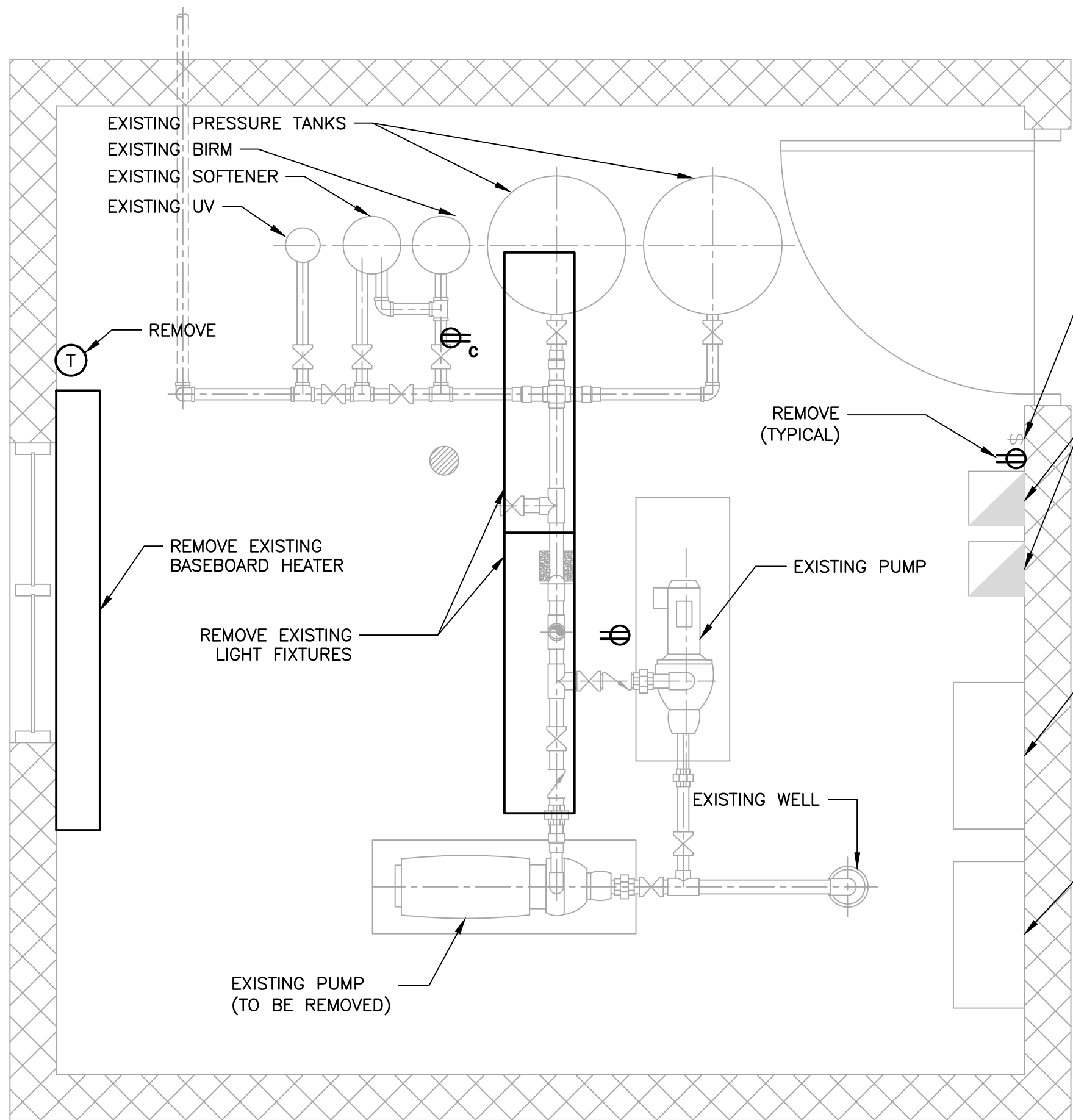


CBCL No 170825.01	Contract No	Date SEPT 2017	Scale 1:20
Designed BB	Checked WD	Drawn MYA	Approved
Sheet No 2 of 2	Drawing No		

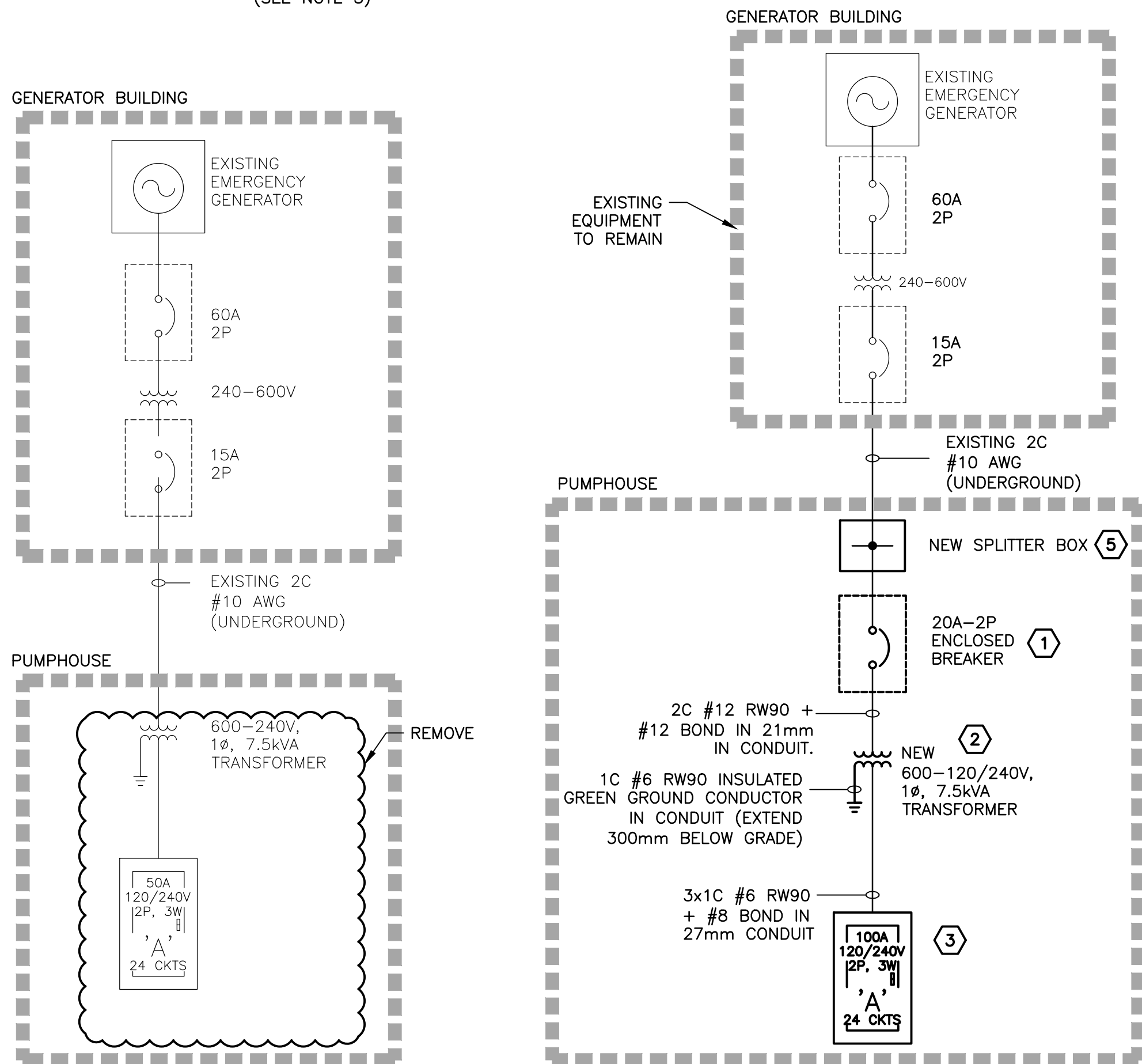


P02

DRAWING NAME: K:\PROJECTS\170825.01 SABLE ISLAND NATIONAL PARK RESERVE WATER\20 CAD\05 ELEC\170825.01_E01.DWG LAYOUT NAME: E01 DATE: DATE May-17-18 2:55:50 PM CAD OPERATOR: MALIARI



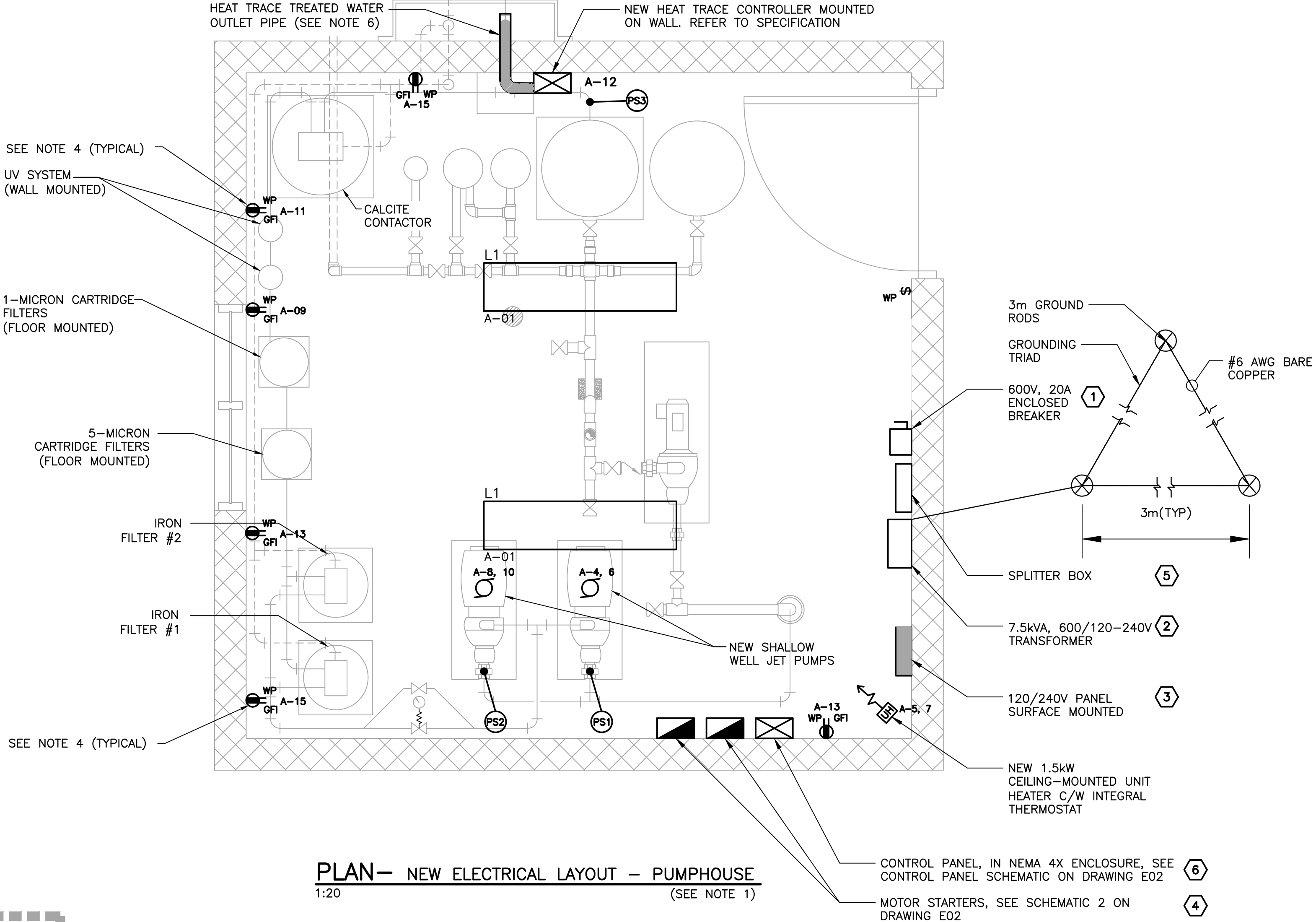
DEMOLITION PLAN—PUMP HOUSE
1:20 (SEE NOTE 5)



EXISTING SINGLE LINE DIAGRAM

NEW SINGLE LINE DIAGRAM

1 SINGLE LINE DIAGRAM
N.T.S.



PLAN— NEW ELECTRICAL LAYOUT — PUMPHOUSE
1:20 (SEE NOTE 1)

ELECTRICAL LEGEND			
SINGLE LINE DIAGRAM LEGEND		POWER/CONTROLS	
	CIRCUIT BREAKER.		UNIT HEATER
	TRANSFORMER.		CONTROL PANEL
	GENERATOR		DISCONNECT SWITCH.
	ENCLOSED BREAKER		MOTOR STARTER
	BILL OF MATERIALS ITEM. REFER TO DRAWING E02		MISCELLANEOUS EQUIPMENT, IDENTIFIED BY ANNOTATION
LIGHTING			THERMOSTAT
XX	SURFACE MOUNTED LIGHT FIXTURE. XX = LIGHT TYPE, REFER TO LIGHTING FIXTURE SCHEDULE.	E	EXISTING
\$	LIGHT SWITCH	WP	WEATHER PROOF
		GFI	GROUND FAULT CIRCUIT INTERRUPTER
		C	CEILING MOUNTED

NOTES:

- ALL ELECTRICAL EQUIPMENT IS NEW UNLESS OTHERWISE NOTED.
- ALL DIMENSIONS ARE IN MILLIMETERS UNLESS OTHERWISE NOTED.
- INSTALL NEW ELECTRICAL EQUIPMENT TO MINIMIZE ELECTRICAL SHUT-DOWN. COORDINATE SHUT-DOWN AND ESTIMATED DOWN TIME WITH OWNER.
- RECEPTACLE LOCATIONS TO BE COORDINATED WITH OWNER ON SITE.
- UNLESS NOTED OTHERWISE, ALL ELECTRICAL, PROCESS, AND MECHANICAL EQUIPMENT IN THIS SPACE SHALL BE REMOVED. ALL EXISTING WIRING AND CONDUIT SHALL BE REMOVED BACK TO ITS SOURCE.
- PROVIDE SELF REGULATING HEAT TRACE URECOM UTC-2030 (12W/m) OR APPROVED EQUAL. HEAT TRACE CABLE TO START IN BUILDING AND SHALL EXTEND 1.2m BELOW GRADE. LOCATE END SEAL AND POWER CONNECTION KITS WITHIN THE BUILDING.

0	ISSUED FOR TENDER	MAY 17/18	BB
B	ISSUED FOR APPROVAL	APR 27/18	BB
A	ISSUED FOR REVIEW	MAY 01/18	BB
No.	Description	Date	By
Revision or Issue			
SABLE ISLAND WATER INFRASTRUCTURE UPGRADE			
ELECTRICAL			
LEGEND, PLANS & SINGLE LINE DIAGRAM			
CBCL LIMITED Consulting Engineers			
CBCL No 170825.01	Contract No	Date SEPT 2017	Scale AS NOTED
		Designed DK	Drawn TS
		Checked LH	Approved
Sheet No 1 of 2		Drawing No E01	

