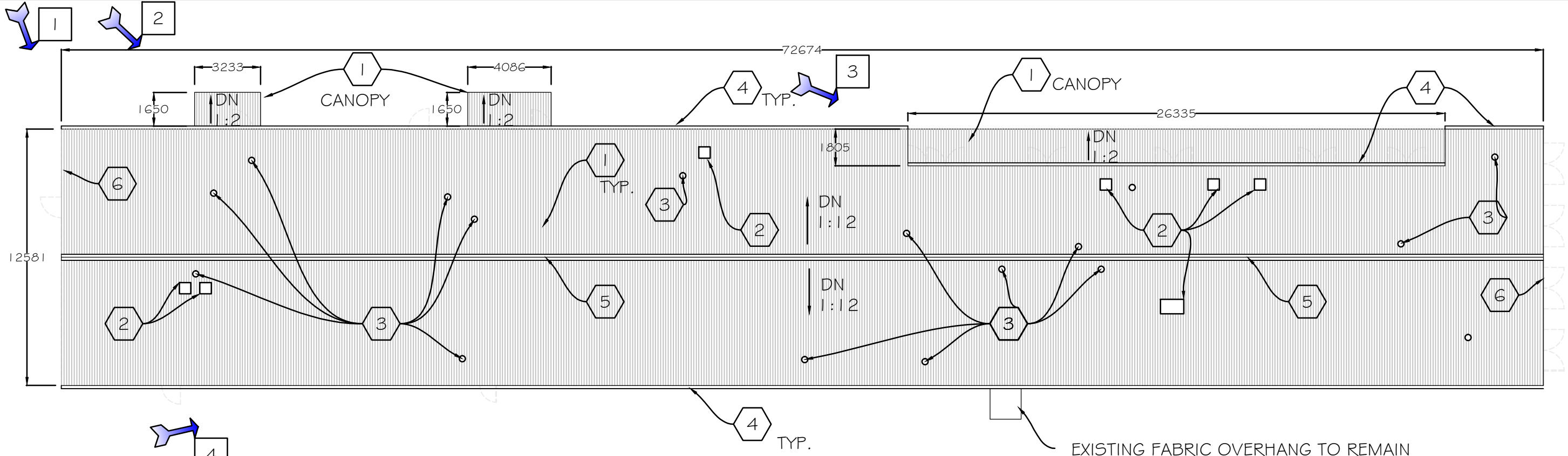


Client/client CORRECTIONAL SERVICE CANADA	Project title/Titre du projet MISSION MEDIUM INSTITUTION 8751 STAVE LAKE STREET, MISSION, BC BUILDING M ROOF IMPROVEMENT	Drawing title/Titre du dessin SITE PLAN	Consultant Signature & Date Only	PWGSC Project Manager/Administrateur de Projets TPSGC PAUL RITHALER	Project No./No. du projet R.097978.001	
			Designed by/Concept par MAX CHENG	PWGSC Regional Manager, Architectural and Engineering Services/ Gestionnaire régionale, Services d'architecture et de génie, TPSGC PREETIPAL PAUL	Sheet/Feuille A01	Revision/ Révision 0
			Drawn by/Dessiné par MAX CHENG	Date/Date 2018-07-06	OF	





1 ROOF PLAN - BUILDING M

Scale: 1:200

GENERAL NOTES

1. POWER WASH EXISTING METAL ROOF CLADDING, CANOPIES, OVERHANG, FLASHING AND GUTTERS.
2. APPLY NEW ROOFING ASSEMBLY OVER EXISTING METAL ROOF CLADDING, CANOPIES AND GUTTERS. NEW ROOFING ASSEMBLY CONSISTS OF PRIMER, BASE COAT, REINFORCEMENT LAYER AND TOP FINISH COAT. SEE SPECIFICATION FOR PRODUCT AND INSTALLATION DETAILS.
3. EXISTING ROOF VENTS AND PLUMBING STACKS TO REMAIN.
4. EXISTING FABRIC OVERHANG ON EAST BUILDING ELEVATION TO REMAIN.
5. CONTRACTOR TO FIELD VERIFY ROOF AND CANOPIES' DIMENSIONS AND SLOPES. CLAIM ADDITIONAL COSTS FOR DIMENSION AND ROOF SLOPE DISCREPANCIES WILL NOT BE ENTERTAINED.



LEGEND

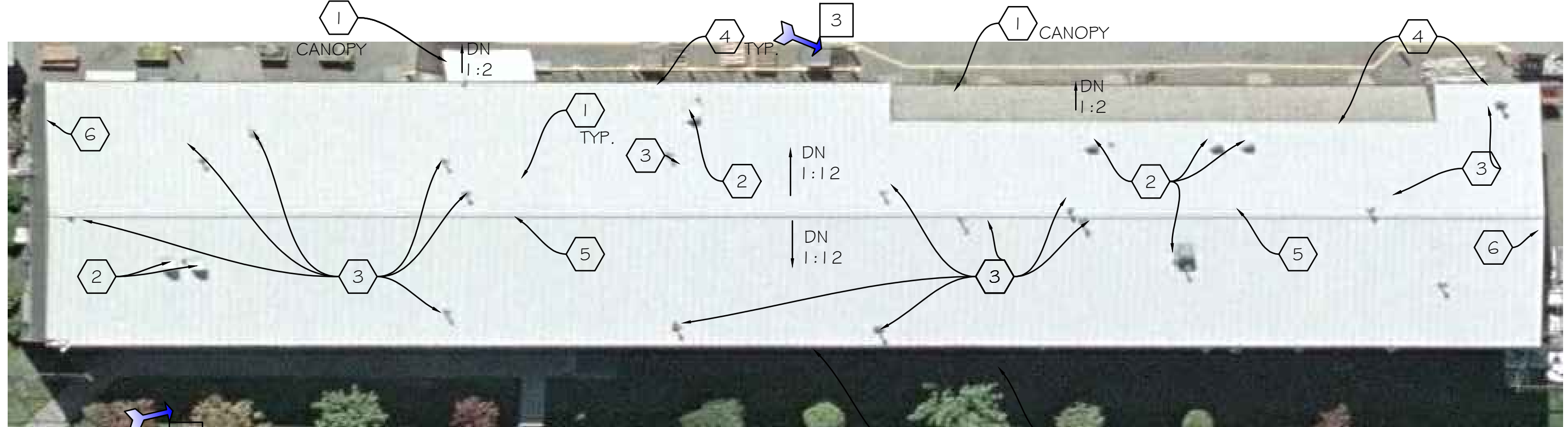
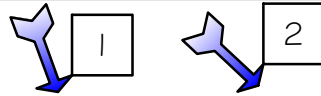
- PHOTO VIEWING DIRECTION
- PHOTO NUMBER LISTED ON A5

LEGEND

- POWER WASH EXISTING METAL ROOF CLADDING, CANOPIES AND FLASHING. APPLY NEW ROOFING ASSEMBLY OVER EXISTING ROOF SYSTEM FOR ENTIRE BUILDING M INCLUDING CANOPIES
- EXISTING VENT TO REMAIN, SEE DETAIL #1/A4 FOR DETAILS
- EXISTING PLUMBING STACK TO REMAIN SEE DETAIL #2/A4 FOR DETAILS
- EXISTING GUTTERS AND DOWNSPOUTS TO REMAIN. POWER WASH AND CLEAN GUTTERS, NEW ROOFING INSIDE THE EXISTING GUTTER, SEE DETAIL #4/A4
- EXISTING RIDGE FLASHING TO REMAIN APPLY NEW ROOFING ASSEMBLY OVER RIDGE FLASHING. TYPICAL
- EXISTING GABLE-END FLASHING TO REMAIN. APPLY NEW ROOFING ASSEMBLY OVER FLASHING, SEE DETAIL #3/A4

Client/client CORRECTIONAL SERVICE CANADA	Project title/Titre du projet MISSION MEDIUM INSTITUTION 8751 STAVE LAKE STREET, MISSION, BC BUILDING M ROOF IMPROVEMENT	Drawing title/Titre du dessin ROOF PLAN AND GENERAL NOTES	Consultant Signature & Date Only	PWGSC Project Manager/Administrateur de Projets TPSC PAUL RITHALER	Project No./No. du projet R.097978.001	
			Designed by/Concept par MAX CHENG	PWGSC Regional Manager, Architectural and Engineering Services/ Gestionnaire régionale, Services d'architecture et de génie, TPSC PREETIPAL PAUL	Sheet/Feuille A02	Revision/Revision 0
			Drawn by/Dessiné par MAX CHENG	Date/Date 2018-07-06	OF	





1 ROOF AERIAL PHOTO - BUILDING M
Scale: N.T.S.



LEGEND

- PHOTO VIEWING DIRECTION
- PHOTO NUMBER LISTED ON A5

AERIAL PHOTO DOESN'T MATCH CURRENT CONDITION EXACTLY. USE IT AS REFERENCE ONLY. SEE DETAILS AND SCOPE ON A02

EXISTING FABRIC OVERHANG TO REMAIN

LEGEND

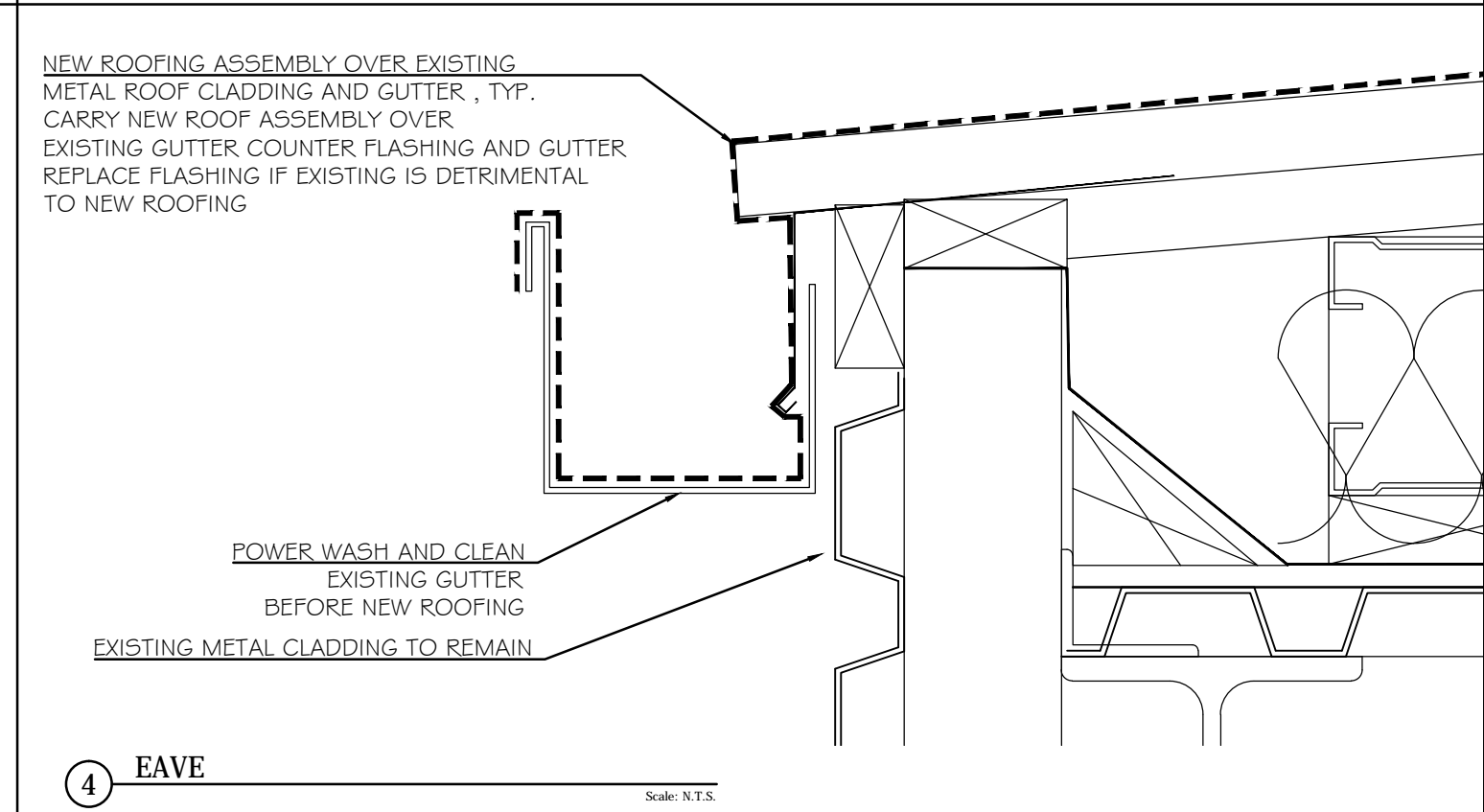
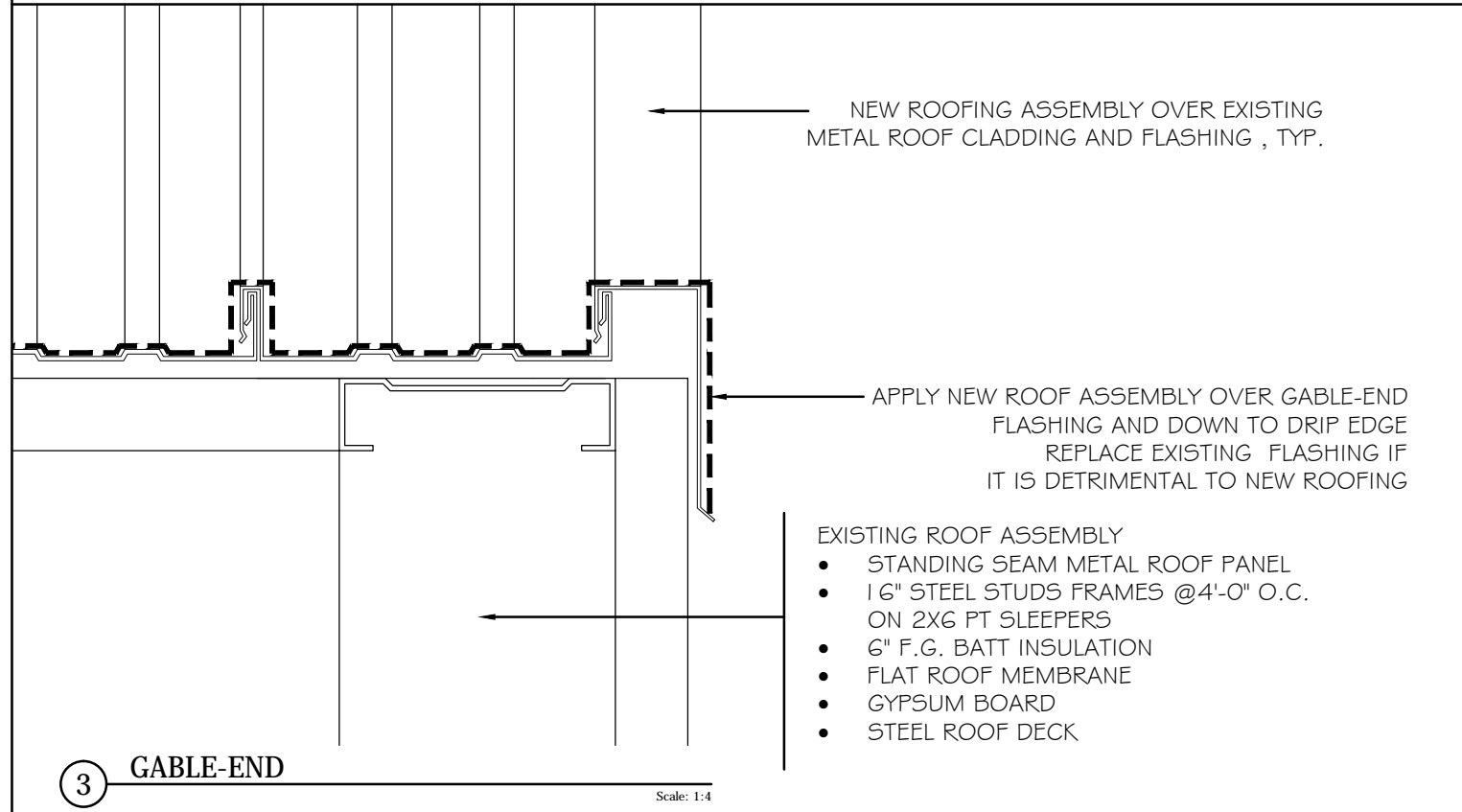
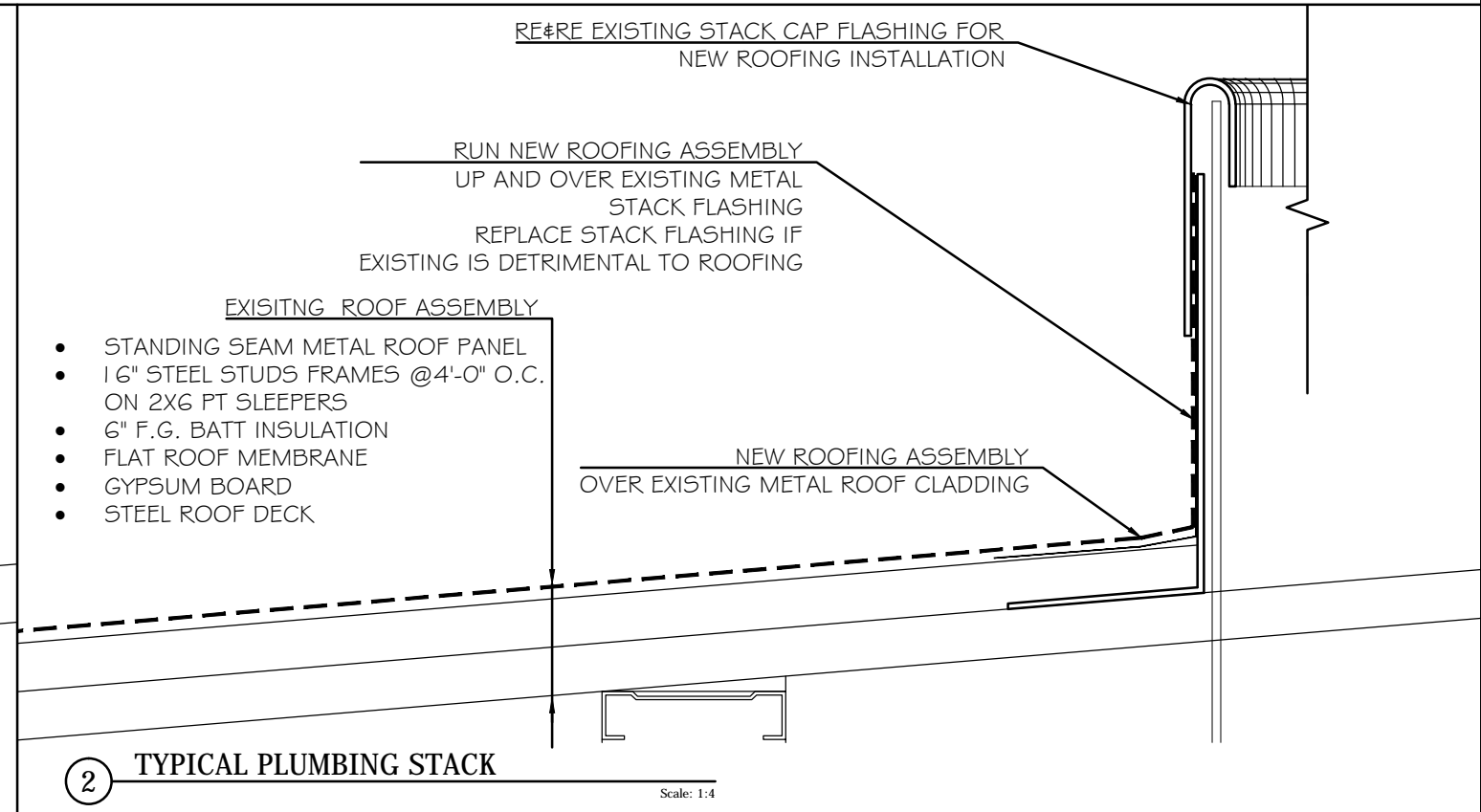
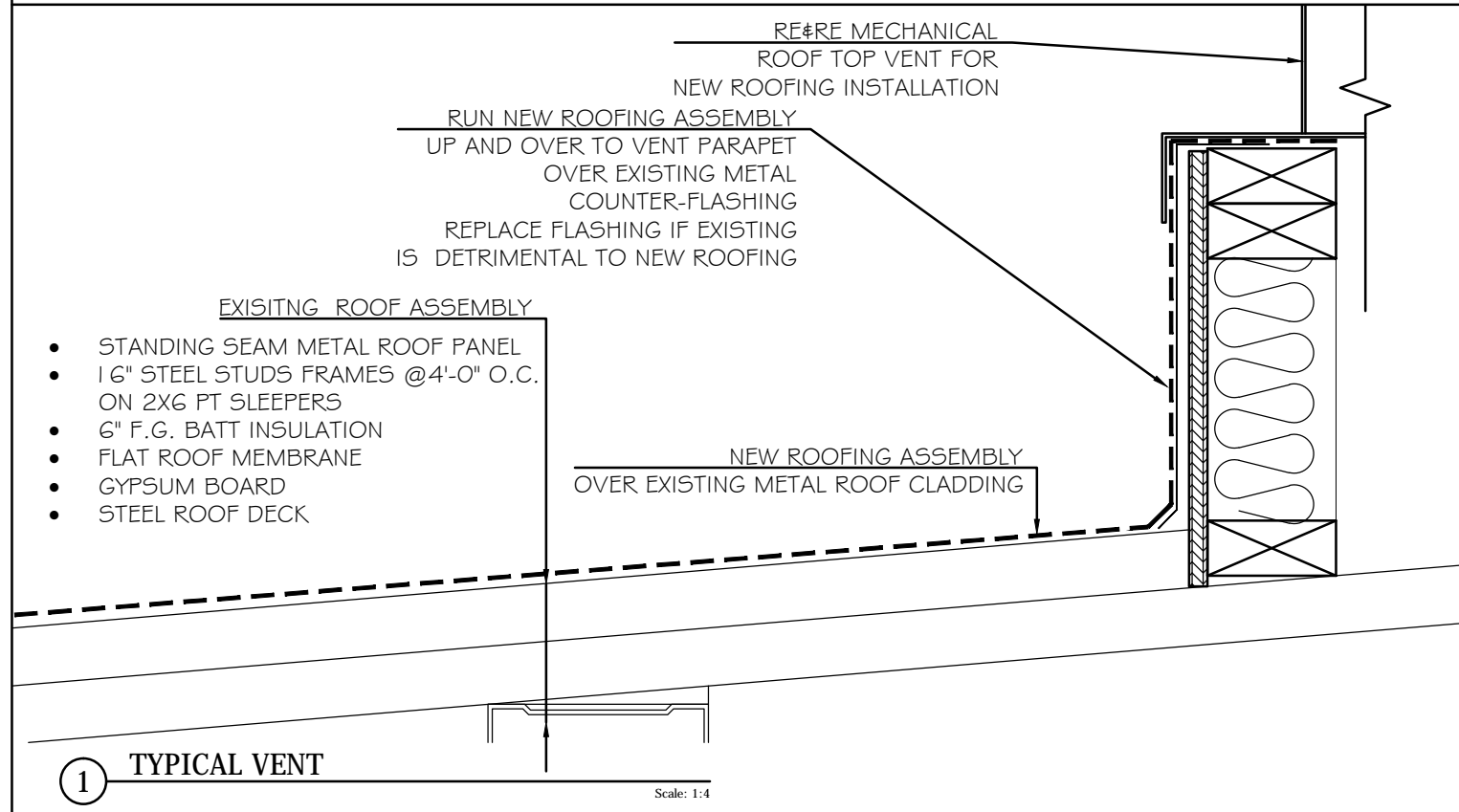
- POWER WASH EXISTING METAL ROOF CLADDING, CANOPIES AND FLASHING. APPLY NEW ROOFING ASSEMBLY OVER EXISTING ROOF SYSTEM FOR ENTIRE BUILDING M INCLUDING CANOPIES
- EXISTING VENT TO REMAIN, SEE DETAIL#1/A4 FOR DETAILS
- EXISTING PLUMBING STACK TO REMAIN SEE DETAIL #2/A4 FOR DETAILS
- EXISTING GUTTERS AND DOWNSPOUTS TO REMAIN. POWER WASH AND CLEAN GUTTERS, AND NEW ROOFING INSIDE THE EXISTING GUTTER, SEE DETAIL #4/A4
- EXISTING RIDGE FLASHING TO REMAIN APPLY NEW ROOFING ASSEMBLY OVER RIDGE FLASHING. TYPICAL
- EXISTING GABLE-END FLASHING TO REMAIN. APPLY NEW ROOFING ASSEMBLY OVER FLASHING, SEE DETAIL #3/A4

GENERAL NOTES

1. POWER WASH EXISTING METAL ROOF CLADDING, CANOPIES, OVERHANG, FLASHING AND GUTTERS.
2. APPLY NEW ROOFING ASSEMBLY OVER EXISTING METAL ROOF CLADDING, CANOPIES AND GUTTERS. NEW ROOFING ASSEMBLY CONSISTS OF PRIMER, BASE COAT, REINFORCEMENT LAYER AND TOP FINISH COAT. SEE SPECIFICATION FOR PRODUCT AND INSTALLATION DETAILS.
3. EXISTING ROOF VENTS AND PLUMBING STACKS TO REMAIN.
4. EXISTING FABRIC OVERHANG ON EAST BUILDING ELEVATION TO REMAIN.
5. CONTRACTOR TO FIELD VERIFY ROOF AND CANOPIES' DIMENSIONS AND SLOPES. CLAIM ADDITIONAL COSTS FOR DIMENSION AND ROOF SLOPE DISCREPANCIES WILL NOT BE ENTERTAINED.

Client/client CORRECTIONAL SERVICE CANADA	Project title/Titre du projet MISSION MEDIUM INSTITUTION 8751 STAVE LAKE STREET, MISSION, BC BUILDING M ROOF IMPROVEMENT	Drawing title/Titre du dessin ROOF AERIAL PHOTO AND GENERAL NOTES	Consultant Signature & Date Only	PWGSC Project Manager/Administrateur de Projets TPSG PAUL RITHALER	Project No./No. du projet R.097978.001	
			Designed by/Concept par MAX CHENG	PWGSC Regional Manager, Architectural and Engineering Services/ Gestionnaire régionale, Services d'architecture et de génie, TPSG PREETIPAL PAUL	Sheet/Feuille A03	Revision/Revision 0
			Drawn by/Dessiné par MAX CHENG	Date/Date 2018-07-06	OF	





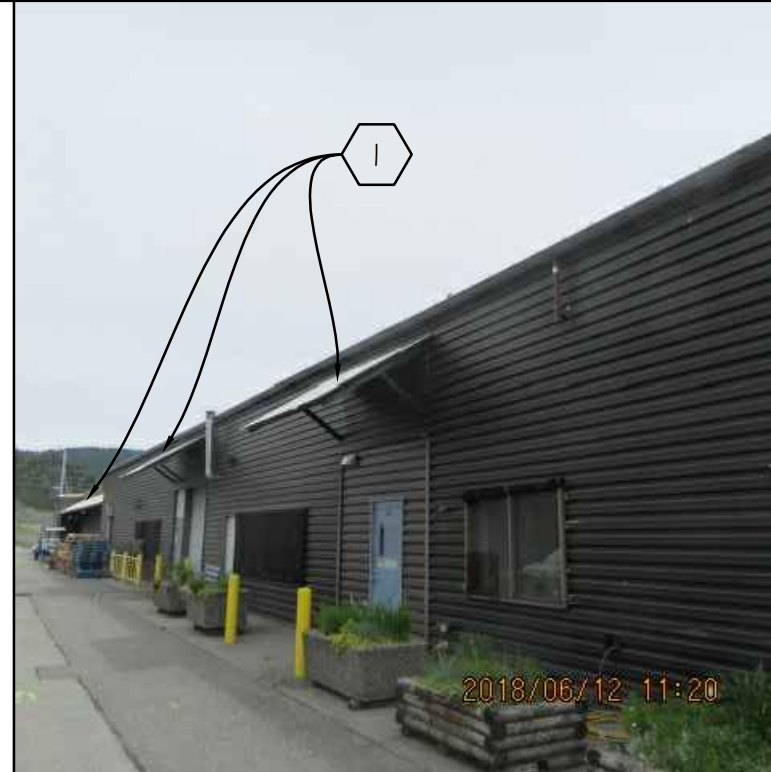
Client/client CORRECTIONAL SERVICE CANADA	Project title/Titre du projet MISSION MEDIUM INSTITUTION 8751 STAVE LAKE STREET, MISSION, BC BUILDING M ROOF IMPROVEMENT	Drawing title/Titre du dessin DETAILS	Consultant Signature & Date Only		PWGSC Project Manager/Administrateur de Projets TPSGC PAUL RITHALER		Project No./No. du projet R.097978.001		
			Designed by/Concept par MAX CHENG		PWGSC Regional Manager, Architectural and Engineering Services/ Gestionnaire régionale, Services d'architecture et de génie, TPSGC PREETIPAL PAUL		Sheet/Feuille A04		Revision/ Revision 0
			Drawn by/Dessiné par MAX CHENG		Date/Date 2018-07-06		OF		





1 PHOTO OF EXISTING CONDITION

Scale: N.T.S.



2 PHOTO OF EXISTING CONDITION

Scale: N.T.S.



3 PHOTO OF EXISTING CONDITION

Scale: N.T.S.



4 PHOTO OF EXISTING CONDITION

Scale: N.T.S.

- LEGEND
- 1 POWER WASH EXISTING METAL ROOF CLADDING, CANOPIES AND FLASHING. APPLY NEW ROOFING ASSEMBLY OVER EXISTING ROOF SYSTEM FOR ENTIRE BUILDING M INCLUDING CANOPIES
 - 2 EXISTING VENT TO REMAIN, SEE DETAIL# 1/A4 FOR DETAILS
 - 3 EXISTING PLUMBING STACK TO REMAIN SEE DETAIL #2/A4 FOR DETAILS
 - 4 EXISTING GUTTERS AND DOWNSPOUTS TO REMAIN. POWER WASH AND CLEAN GUTTERS, AND NEW ROOFING INSIDE THE EXISTING GUTTER, SEE DETAIL #4/A4
 - 5 EXISTING RIDGE FLASHING TO REMAIN APPLY NEW ROOFING ASSEMBLY OVER RIDGE FLASHING. TYPICAL
 - 6 EXISTING GABLE-END FLASHING TO REMAIN. APPLY NEW ROOFING ASSEMBLY OVER FLASHING, SEE DETAIL #3/A4
 - 7 EXISTING TO REMAIN

Client/client
CORRECTIONAL SERVICE CANADA

Project title/Titre du projet
MISSION MEDIUM INSTITUTION
8751 STAVE LAKE STREET, MISSION, BC
**BUILDING M
ROOF IMPROVEMENT**

Drawing title/Titre du dessin
PHOTOS OF EXISTING CONDITION

Consultant Signature & Date Only
Designed by/Concept par
MAX CHENG
Drawn by/Dessiné par
MAX CHENG

**PWGSC Project Manager/Administrateur
de Projets TPSGC**
PAUL RITHALER
PWGSC Regional Manager, Architectural and Engineering Services/
Gestionnaire régionale, Services d'architecture et de génie, TPSGC
PREETIPAL PAUL
Date/Date
2018-07-06

**Project No./No. du
projet**
R.097978.001
Sheet/Feuille
A05
OF
**Revision/
Revision**
0

