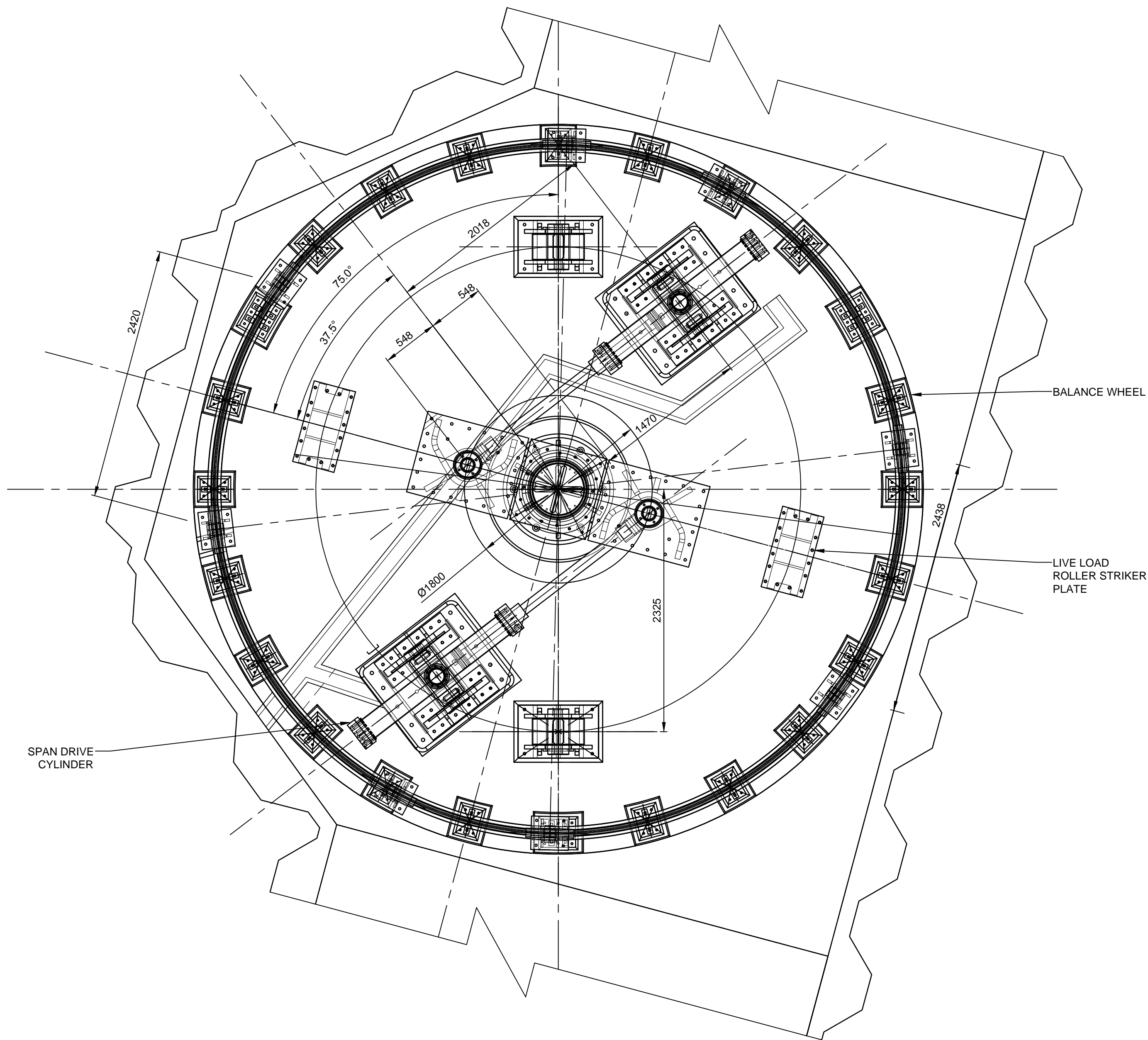


NEW ELECTRICAL TRENCH - TYP. DETAIL

(FOR LOCATION OF NEW TRENCH SEE SITE PLAN DWG. xxx.)

1:10



PIVOT PIER MACHINERY SPAN FULLY OPEN

1:30

REFER TO M-03 FOR ADDITIONAL INFORMATION AND DIMENSIONS

NOTES:

1. GENERALLY, THE CONCRETE REPAIR WORK SHALL BE COORDINATED SUCH THAT THE ELEVATIONS ARE MET TO ENSURE PROPER CLEARANCE FOR THE MACHINERY ASSEMBLIES THROUGHOUT THE RANGE OF OPERATION OF THE SWING SPAN AND THE MACHINERY. THE DETAILS PROVIDED ACCOUNT FOR A 25 mm TO 50 mm GROUT PAD TO BE POURED TO FILL THE VOID BETWEEN THE MACHINERY COMPONENT BASE AND THE CONCRETE PIER OR PLINTH TOP. THE COMPONENTS SHALL BE FINAL ALIGNED USING LEVELING NUTS / JACKING SCREWS IN ORDER TO ACHIEVE THE FINAL ELEVATION DESIRED THEN LOCKED IN PLACE WITH THE TOP NUT ABOVE THE BASE COMPONENT. THE GROUT PAD SHALL BE POURED TO ENSURE FULL CONTACT BETWEEN THE BASE COMPONENT AND PIER. FINALLY, THE ANNULAR SPACE BETWEEN THE BASE COMPONENT HOLE AND ANCHOR BOLT SHALL BE FILLED WITH A NON-SHRINK GROUT TO SECURE THE FINAL LOCATION.
2. MECHANICAL MOUNTING BOLTS SHALL MEET OR EXCEED STRENGTH REQUIREMENTS OF STRUCTURAL BOLTS. REFER TO SPECIFICATIONS.
3. ALL WORK FOR THE HYDRAULIC/MECHANICAL SYSTEMS SHOWN ON MECHANICAL DRAWINGS SHALL BE PAID FOR UNDER ITEMS "SECTION 24 05 00" AND "SECTION 29 05 00".
4. DIMENSIONS INDICATED ON THE CONTRACT DRAWINGS ARE NOMINAL AND INTENDED FOR INFORMATION. MANY OF THE DIMENSIONS INDICATED ON THE CONTRACT DRAWINGS HAVE BEEN OBTAINED FROM EXISTING DRAWINGS OR FROM INFORMATION PROVIDED BY VARIOUS MACHINERY MANUFACTURERS. THE DIMENSIONS HAVE NOT BEEN FIELD VERIFIED OR OBTAINED FROM CERTIFIED DRAWINGS FROM THE VARIOUS MANUFACTURERS. ALL DIMENSIONS INDICATED ON THE CONTRACT DRAWINGS MUST BE VERIFIED IN THE FIELD OR FROM CERTIFIED DRAWINGS FROM THE VARIOUS MACHINERY MANUFACTURERS BY THE CONTRACTOR. NOTIFY THE DEPARTMENTAL REPRESENTATIVE OF ANY DIMENSIONAL DEVIATIONS FOUND DURING THE VERIFICATION. MAKE ALL REQUIRED FIELD MEASUREMENTS AND OBTAIN CERTIFIED DIMENSIONS FOR ALL MANUFACTURED PRODUCTS NECESSARY BEFORE SHOP DRAWINGS, FABRICATION, AND INSTALLATION MAY PROCEED. THE CONTRACTOR IS SOLELY RESPONSIBLE FOR CONVERTING DIMENSIONS FROM METRIC TO IMPERIAL UNITS, OR VICE VERSA, AS REQUIRED.
5. FINAL THICKNESSES SHOWN FOR ALL COMPONENTS. PROVIDE ADDITIONAL THICKNESS TO COMPENSATE FOR MATERIAL REMOVAL DURING MACHINING.
6. STRESS RELIEVE ALL WELDMENTS AND SUPPORTS BY HEAT TREATMENT AFTER WELDING AND PRIOR TO FINAL MACHINING.
7. ALL DISCREPANCIES AND/OR CONFLICTS SHALL BE BROUGHT TO THE ATTENTION OF THE DEPARTMENTAL REPRESENTATIVE FOR REVIEW AND CLARIFICATION.
8. ALL DIMENSIONS ARE IN MILLIMETERS UNLESS OTHERWISE NOTED. SURFACE FINISH IS IN MICROMETERS. ELEVATION IS IN METERS.
9. ALL DIMENSIONS ARE TO BE FIELD VERIFIED AS REQUIRED TO ENSURE PROPER FIT AND FUNCTION WITH EXISTING MACHINERY AND STRUCTURE.
10. COORDINATE MECHANICAL DRAWINGS WITH ALL BRIDGE STRUCTURAL AND ELECTRICAL DRAWINGS AS NECESSARY.
11. ANY MATERIAL NOT SPECIFIED SHALL BE CSA G40.20/G40.21 380A.
12. ANY MATERIAL SPECIFIED AS STAINLESS STEEL BUT OTHERWISE NOT DESCRIBED SHALL BE ASTM A666 TYPE 316.
13. LUBRICATION GROOVES ARE REQUIRED FOR ALL BRONZE BEARINGS AND ARE SHOWN ON VARIOUS SHEETS.
14. SELF LUBRICATING BEARINGS SHALL BE BRONZE ASTM B148 C95800 WITH TREPANNED LUBRICANT AND STAINLESS STEEL ASTM A564/A564M TYPE 630 CONDITION A.

PARSONS



04		
03		
02		
01	ISSUED FOR TENDER	2018-07-20
revision		date

Do not scale drawings.
Verify all dimensions and conditions on site and immediately notify the Departmental Representative of all discrepancies.

A	Detail No.
B	No. du detail
C	drawing no. - where detail required dessin no. - ou detail exige
	drawing no. - where detailed dessin no. - ou detaille

project title
titre du projet
Ontario
HAMLET BRIDGE
(BRIDGE 57 & 58)
SWING AND FIXED BRIDGES

drawing title
titre du dessin
MECHANICAL NOTES

drawn by dessine par	THOMAS NIEDZWIADK
designed by conc par	JEFF KEYT
approved by approuve par	JEFF KEYT
bid offre	JULIO LEON
project date date du projet	2018-07-20
project no. no. du projet	R.073593.001
drawing no. dessine no.	M-02