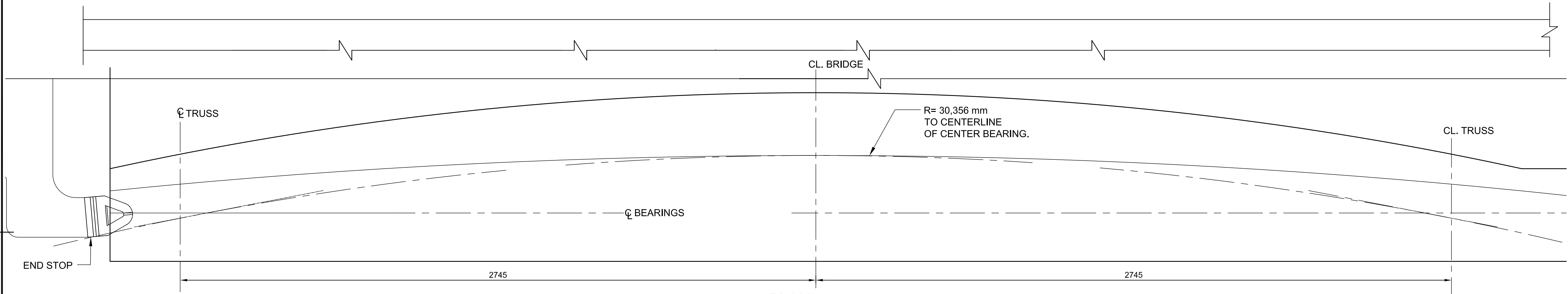
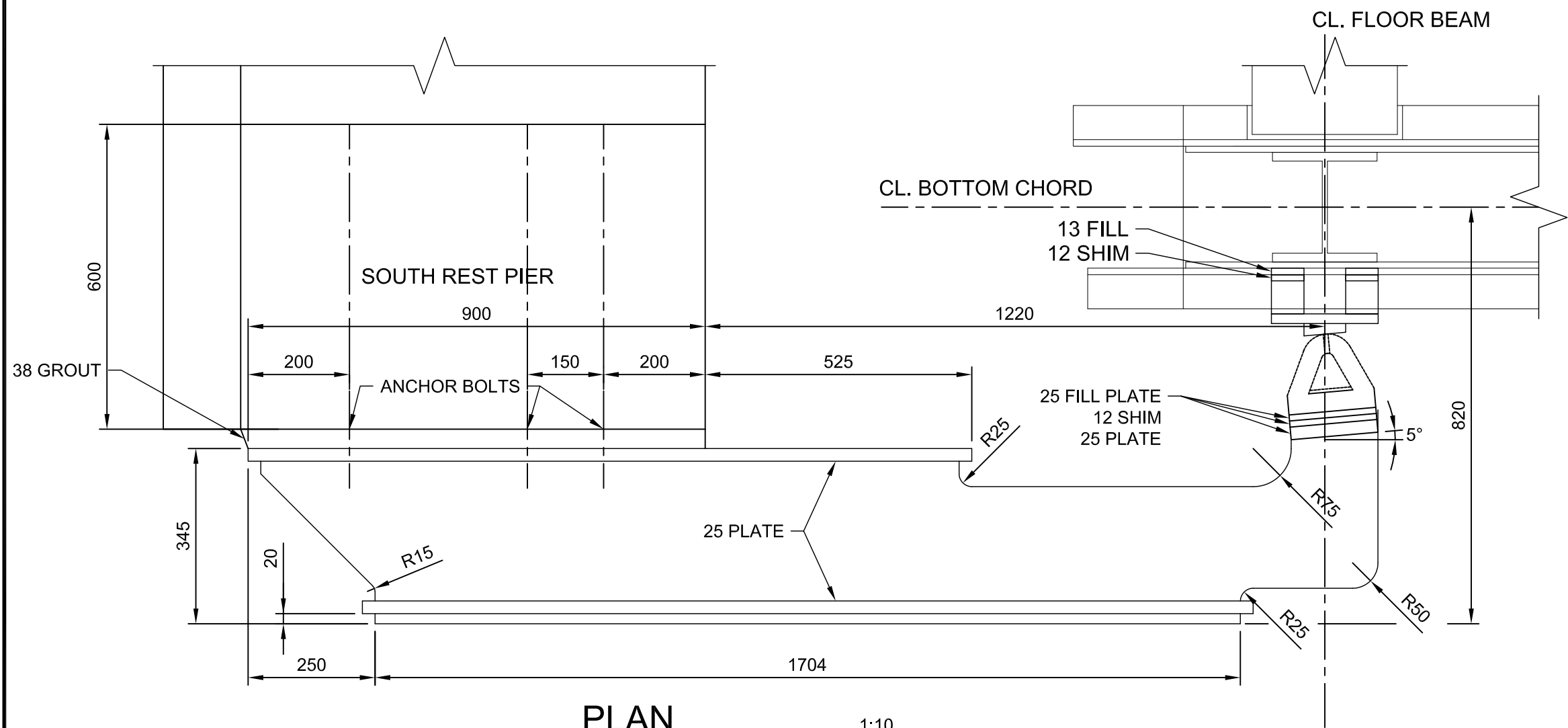


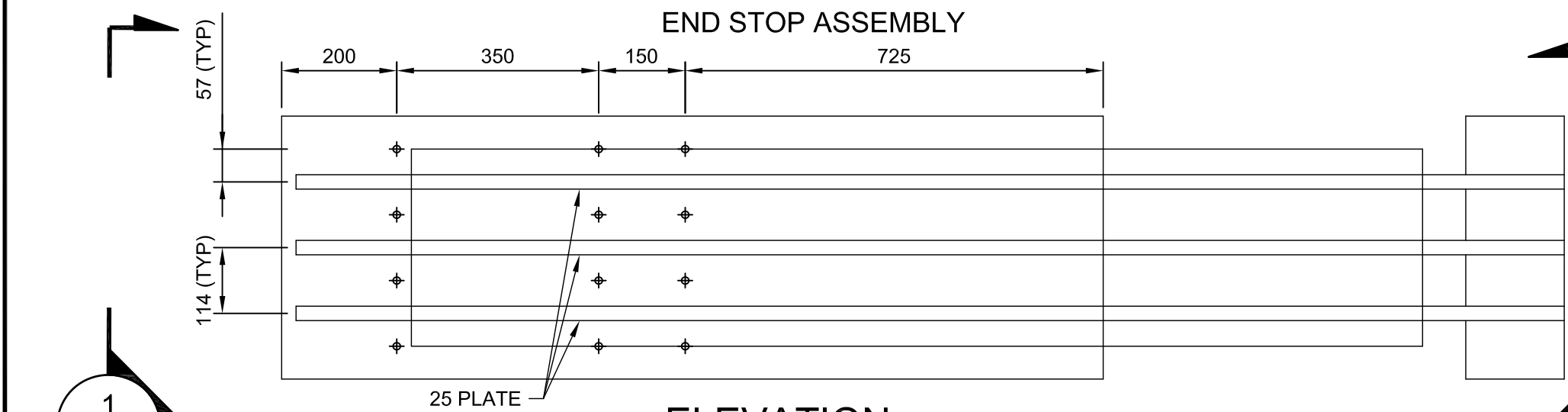
ELEVATION 1:10  
WEST END OF SWING SPAN FULLY OPEN  
OVER SOUTH REST PIER



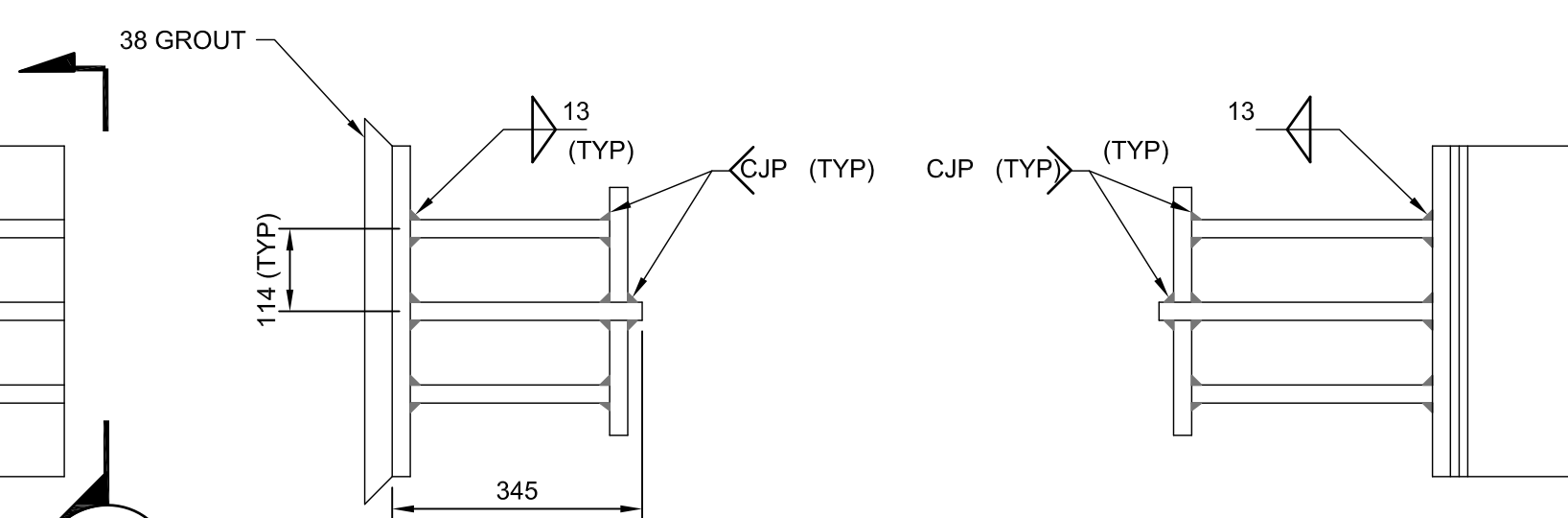
PLAN 1:10



PLAN 1:10



ELEVATION 1:10  
END STOP  
ASTM A709/ A709M



SECTION 1:10  
END STOP

SECTION 1:10  
END STOP

NOTES:

- SEE SHEET M-01 AND M-02 FOR GENERAL NOTES APPLICABLE TO THIS DRAWING.
- DETAILS FOR THE STRIKE PLATE ARE SHOWN ON DRAWING M-20.
- REFER TO M-20 FOR ADDITIONAL END STOP DETAILS

PARSONS



04		
03		
02		
01	ISSUED FOR TENDER	2018-07-20
revision		date

Do not scale drawings.  
Verify all dimensions and conditions on site and immediately  
notify the Departmental Representative of all discrepancies.

A	Detail No.
B	No. du détail
B	drawing no. - where detail required
B	dessin no. - où détail exigé
C	drawing no. - where detailed
C	dessin no. - où détaillé

project title  
titre du projet  
Ontario

HAMLET BRIDGES  
(BRIDGE 57 & 58)  
SWING AND FIXED BRIDGES

drawing title  
titre du dessin  
SOUTH REST PIER PLAN  
AND SECTION

drawn by  
dessiné par  
GREG TAYLOR

designed by  
conç par  
JEFF KEYT

approved by  
approuvé par  
JEFF KEYT

bid  
offre  
JULIO LEON

project manager  
administrateur  
de projets

project date  
date du projet  
2018-07-20

project no.  
no. du projet  
R.073593.001

drawing no.  
dessiné no.  
M-10