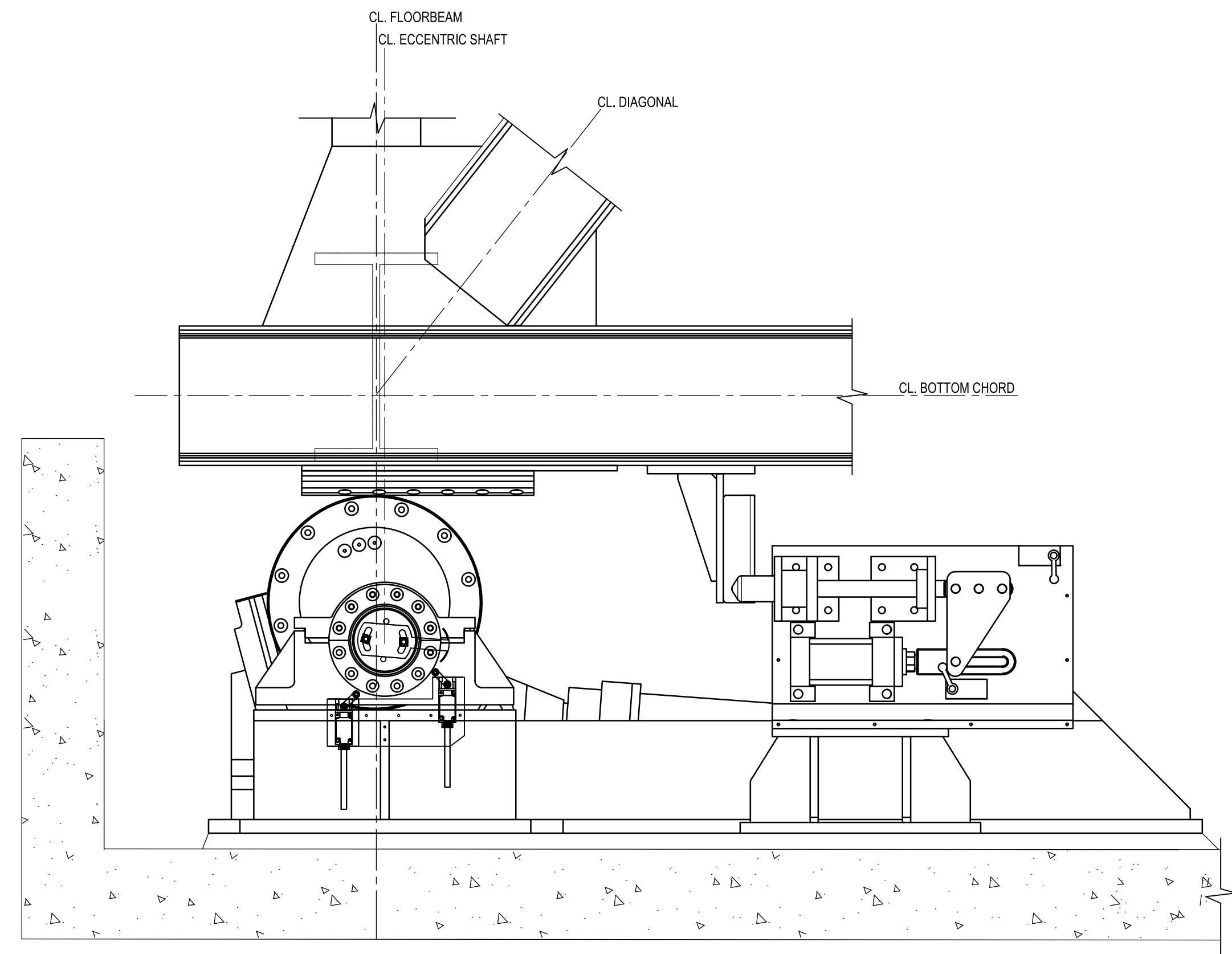
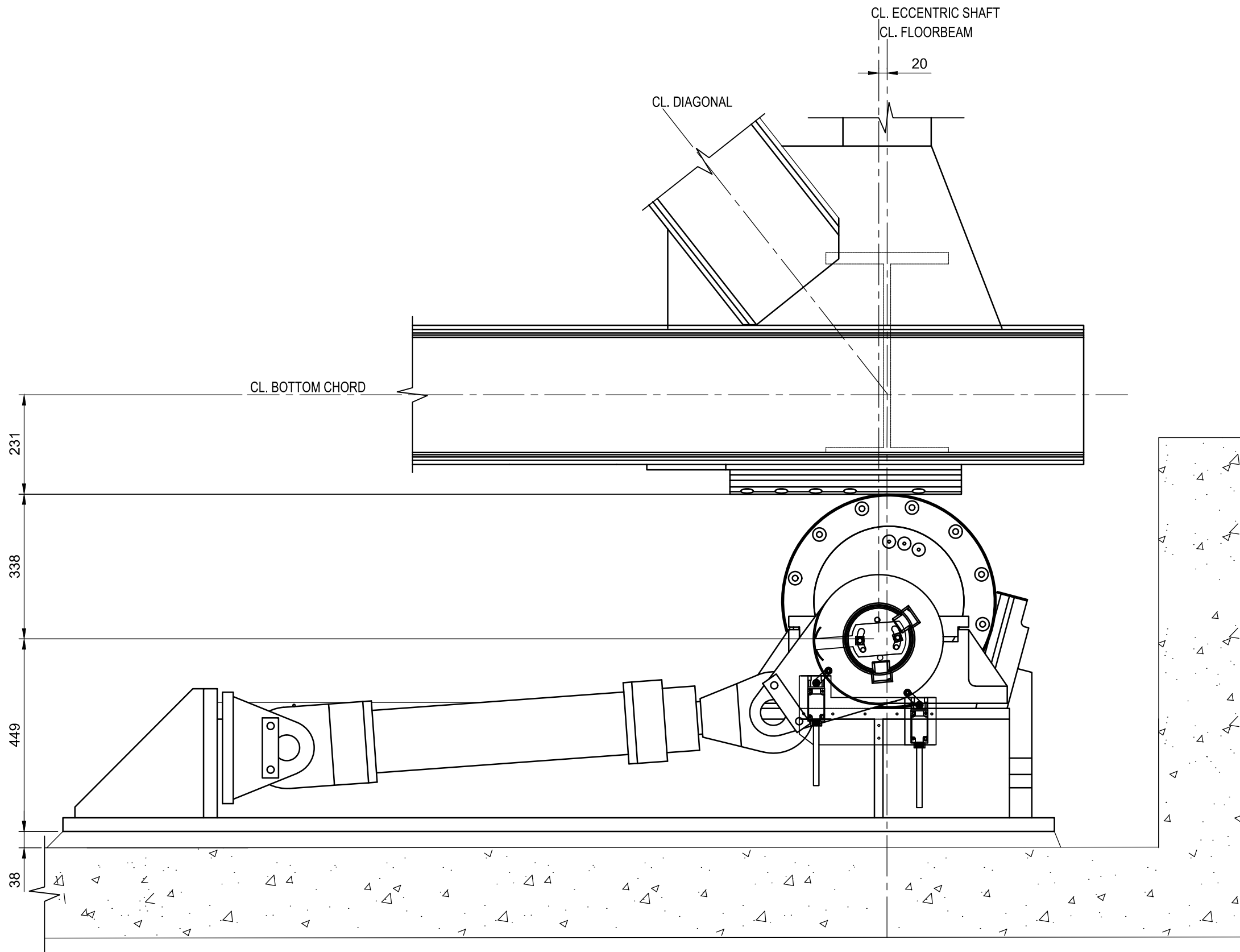


NOTES:

1. SEE GENERAL NOTES ON SHEET M-01 AND M-02 APPLICABLE TO THIS SHEET.
2. ADJUST SHIMS AT EACH END LIFT SHOE (EL6) TO ACHIEVE THE REQUIREMENTS PROVIDED IN THE SPECIFICATIONS.
3. MECHANICAL MOUNTING BOLTS COORDINATE WITH STRUCTURAL BOLTS.
4. PIPING SHOWN (SEE DRAWING M-11) IS A GENERAL LAYOUT AND SHALL BE LOCATED BY THE CONTRACTOR FOR PROPER FUNCTION AND TO AVOID INTERFERENCES.
5. LOCATE ELECTRICAL JUNCTION BOXES AND CONDUITS ON THE ABUTMENT WALL AS SHOWN (SEE DRAWING M-11) . CONTRACTOR TO DESIGN FOR PROPER FUNCTION AND TO AVOID INTERFERENCES.
6. NEW END LIFT ASSEMBLIES SHALL BE COORDINATED WITH THE SOUTH ABUTMENT REHABILITATION WORK, THE SWING SPAN ALIGNMENT, AND THE END LOAD REACTIONS REQUIRED IN THE SPAN. THE HYDRAULIC CYLINDER INSTALLATION AND TESTING SHALL BE COORDINATED WITH THE HYDRAULIC WORK.
7. THE END LIFT ROLLERS ARE USED TO EXERT THE PROPER END LIFT REACTION TO SUPPORT AND STABILIZE THE SPAN UNDER LIVE LOAD TRAFFIC. THE END LIFTS ARE DESIGNED SO THAT APPROXIMATELY 50 MM MINIMUM CLEARANCE IS PROVIDED BETWEEN THE ROLLER AND LOAD PLATE IN THE DISENGAGED POSITION. AS THE NORTH-WEST LOAD PLATE PASSES OVER THE SOUTH-WEST END LIFT ROLLER DURING SPAN ROTATION, MORE CLEARANCE IS PROVIDED WITH SHIMS. THAT IS, THE NORTH-WEST LOAD PLATE CAN BE INSTALLED HIGHER IN ELEVATION (FEWER SHIMS BETWEEN THE TRUSS AND LOAD PLATE BUT MORE SHIMS TO RAISE HEIGHT OF ECCENTRIC WHEEL ASSEMBLY) TO ALLOW IT TO PASS OVER THE SOUTH-WEST ROLLER WITH MORE CLEARANCE.
8. MINIMUM CLEARANCE FOR SWINGING IS 25MM. ADJUST SHIMS AT LOAD PLATE TO ACHIEVE THIS CLEARANCE AND SWING SPA N DEFLECTION. SOUTH END LIFT TO BE MOUNTED LOWER THAN NORTH END LIFT. ADDITIONAL FILL PLATE PROVIDED AT SOUTH LOAD PLATE.



**1** SOUTHWEST END LIFT ELEVATION  
M-13/M-14 (SHOWN FULLY RAISED) 1:8



**2** NORTHWEST END LIFT ELEVATION  
M-13/M-14 (SHOWN FULLY RAISED) 1:8

04		
03		
02		
01	ISSUED FOR TENDER	2018-07-20
revision		date

Do not scale drawings.  
Verify all dimensions and conditions on site and immediately  
notify the Departmental Representative of all discrepancies.

<div><div>A</div><div>B</div><div>C</div></div>	<div>A</div> <div>B</div> <div>C</div>	<div>Detail No.</div> <div>No. du détail</div> <div>drawing no. — where detail required</div> <div>dessin no. — où détail exigé</div> <div>drawing no. — where detailed</div> <div>dessin no. — où détaillé</div>
---	--	---

project title  
titre du projet  
**Ontario**  
**HAMLET BRIDGES**  
**(BRIDGE 57 & 58)**  
**SWING AND FIXED BRIDGES**

drawing title  
titre du dessin  
**WEST ABUTMENT**  
**ELEVATIONS**

drawn by  
dessine par  
**GREG TAYLOR**

designed by  
conc par  
**JEFF KEYT**

approved by  
approuve par  
**JEFF KEYT**

bid  
offre  
**JULIO LEON**

project manager  
administrateur  
de projets

project date  
date du projet  
**2018-07-20**

project no.  
no. du projet  
**R.073593.001**

drawing no.  
dessine no.  
**M-14**