

NOTES:

- (1) SEE HYDRAULIC SPECIFICATIONS FOR COMPONENT SPECIFICATIONS.
- (2) HYDRAULIC PUMPS ARE 100% CAPACITY EACH. ONE PUMP IS REQUIRED TO OPERATE THE SPAN.
- (3) SEE SHEET H3 FOR HOSE & TUBING SCHEDULE.

PARSONS



04		
03		
02		
01	ISSUED FOR TENDER	2018-07-20
revision		date

Do not scale drawings.
Verify all dimensions and conditions on site and immediately
notify the Departmental Representative of all discrepancies.

<div><div>A</div><div>B</div><div>C</div></div>	<div>A Detail No. No. du détail</div> <div>B drawing no. - where detail required dessin no. - où détail exigé</div> <div>C drawing no. - where detailed dessin no. - où détaillé</div>
---	--

project title
titre du projet

Ontario

HAMLET BRIDGES
(BRIDGE 57 & 58)
SWING AND FIXED BRIDGES

drawing title
titre du dessin

HYDRAULIC POWER UNIT

drawn by
dessiné par

IMRAN SIDDIQUI

designed by
conçue par

JEFF KEYT

approved by
approuvé par

JEFF KEYT

bid
offre

JULIO LEON

project manager
administrateur de projets

project date
date du projet

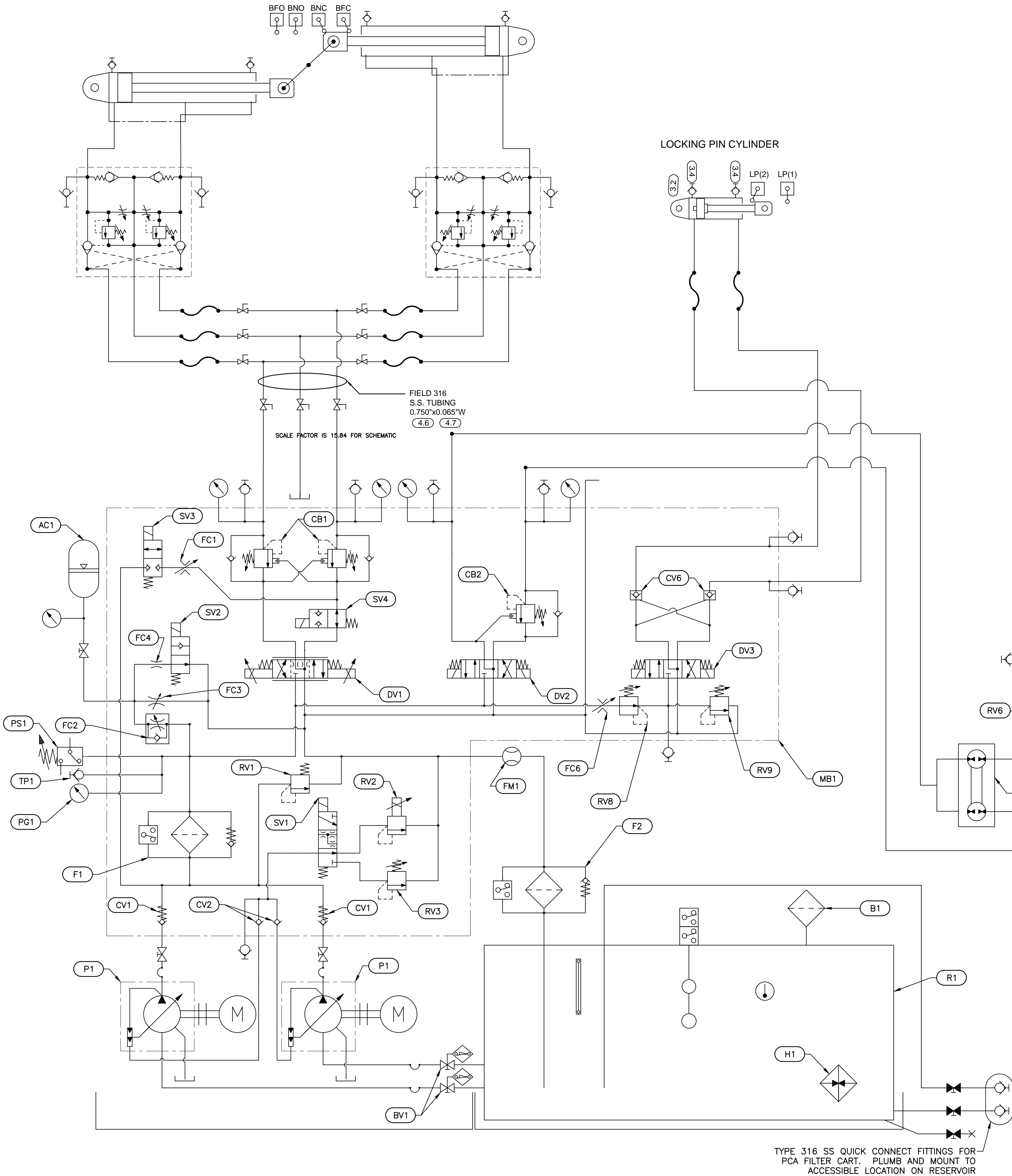
2018-07-20

project no.
no. du projet

R.073593.001

drawing no.
dessiné no.

M-21



TYPE 316 SS QUICK CONNECT FITTINGS FOR
PCA FILTER CART. PLUMB AND MOUNT TO
ACCESSIBLE LOCATION ON RESERVOIR