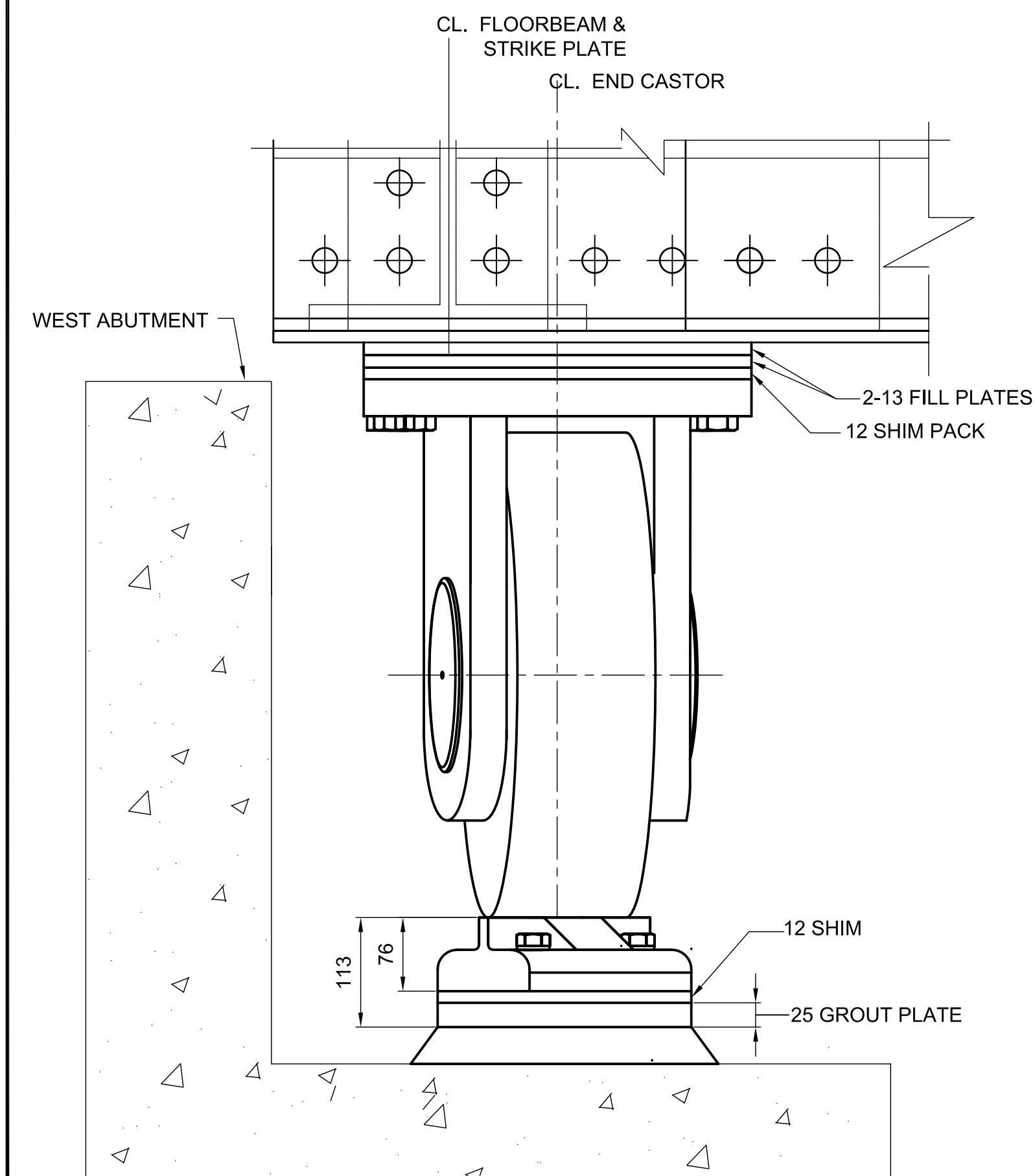


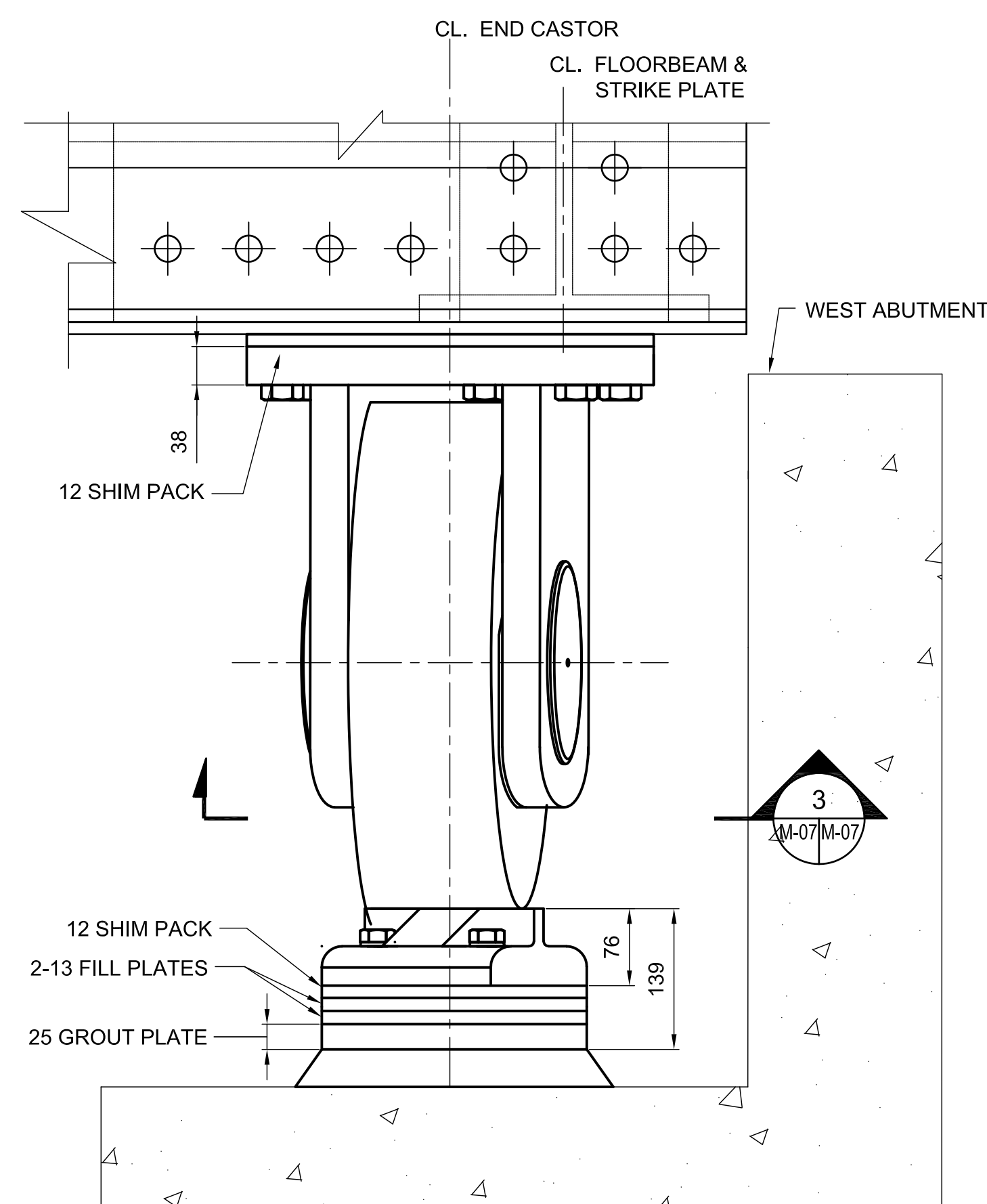
PLAN 1:10

NOTES:

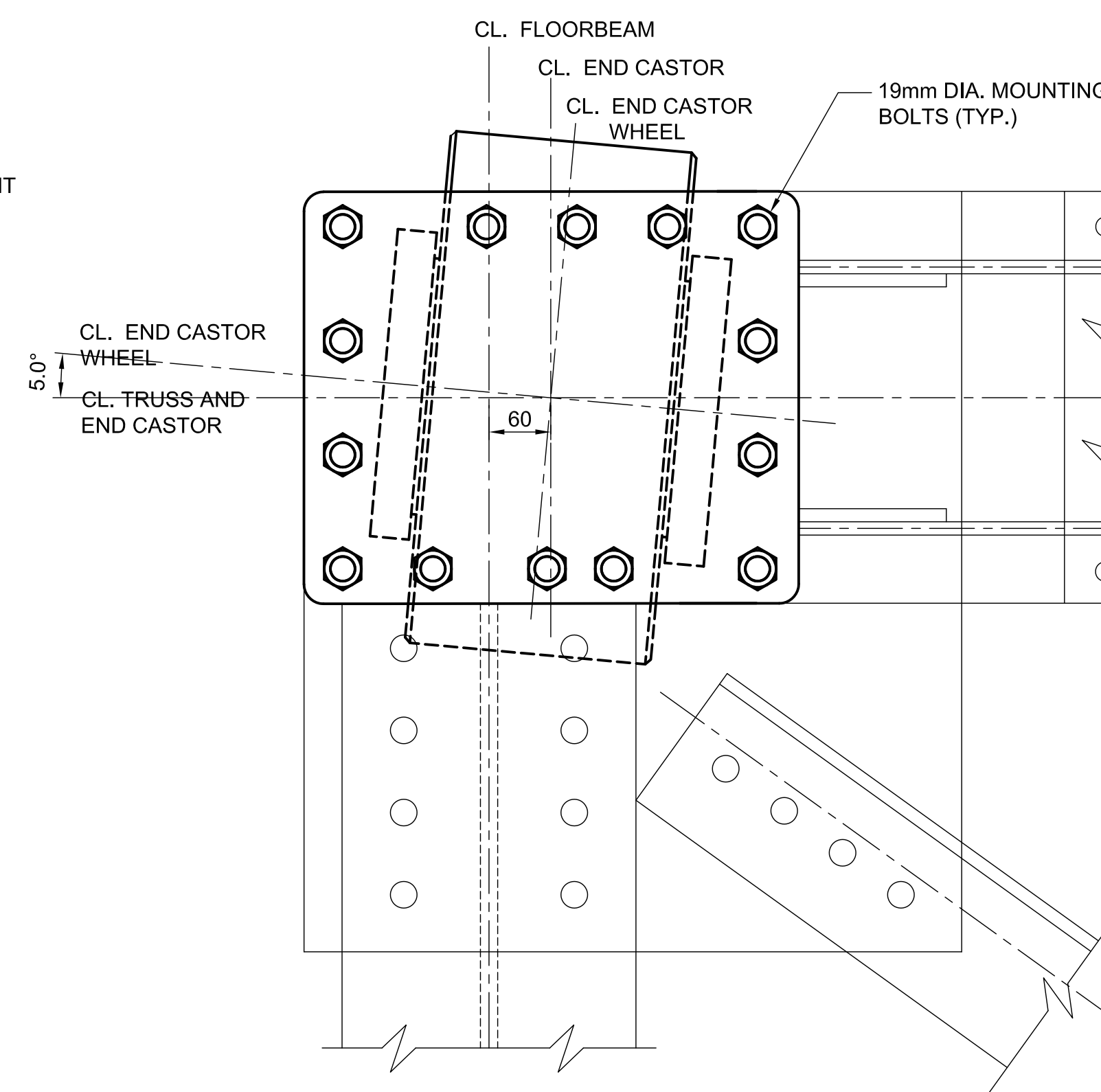
1. SEE SHEET M-01 AND M-02 FOR GENERAL NOTES APPLICABLE TO THIS DRAWING.
2. DETAILS FOR THE END STOP AND STRIKE PLATE ARE SHOWN ON DRAWING M-20.
3. SEE DRAWING M-20 FOR STRIKE PLATE AND END STOP DETAILS.



1 NORTHEAST CASTOR ELEVATION 1:5



2 SOUTHEAST CASTOR ELEVATION 1:5

3 DETAIL 1:5
NORTH EAST SHOWN
SOUTHEAST OPPOSITE HAND

PARSONS



04		
03		
02		
01	ISSUED FOR TENDER	2018-07-20
revision		date

Do not scale drawings.
Verify all dimensions and conditions on site and immediately
notify the Departmental Representative of all discrepancies.

A	Detail No.
B	No. du détail
C	drawing no. - where detail required dessin no. - où détail exigé
	drawing no. - where detailed dessin no. - où détaillé

project title
titre du projet

Ontario

HAMLET BRIDGES
(BRIDGE 57 & 58)
SWING AND FIXED BRIDGES

drawing title
titre du dessin
EAST PIER PLAN
AND SECTION

drawn by
dessiné par
GREG TAYLOR

designed by
conçu par
JEFF KEYT

approved by
approuvé par
JEFF KEYT

bid
offre
JULIO LEON

project manager
administrateur
de projets

project date
date du projet
2018-07-20

project no.
no. du projet
R.073593.001

drawing no.
dessiné no.
M-11