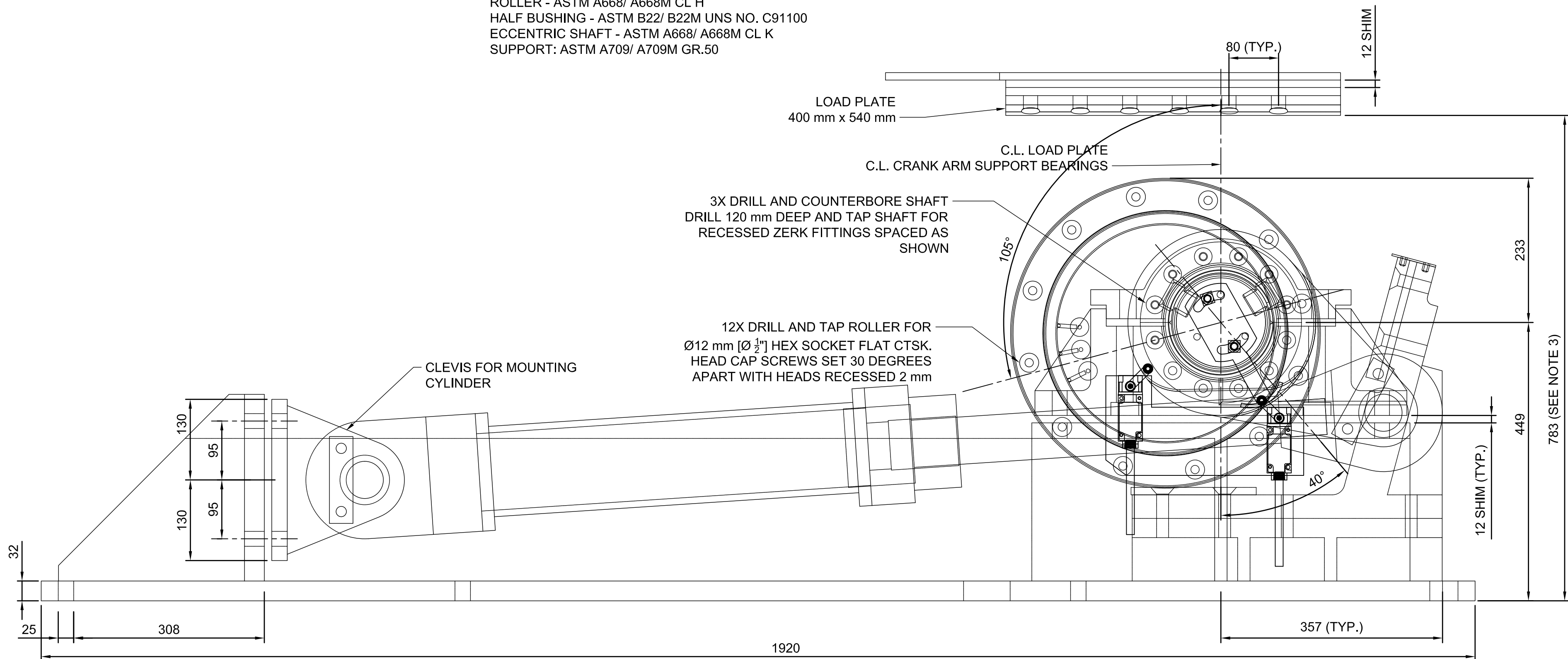


**A** SECTION 1:5  
END LIFT ASSEMBLY  
MATERIAL: LOAD PLATE - ASTM A668/ A668M CL H  
ROLLER - ASTM A668/ A668M CL H  
HALF BUSHING - ASTM B22/ B22M UNS NO. C91100  
ECCENTRIC SHAFT - ASTM A668/ A668M CL K  
SUPPORT: ASTM A709/ A709M GR.50



**ELEVATION** 1:5  
END LIFT ASSEMBLY - FULLY LOWERED POSITION

**NOTES:**

- (1) SEE DRAWING M-01 AND M-02 FOR GENERAL NOTES, FITS AND FINISHES APPLICABLE TO THIS DRAWING. SEE SCOPE OF WORK ITEM 2.8 FOR SUGGESTED INSTALLATION REQUIREMENTS.
- (2) COORDINATE END LIFT ASSEMBLY POSITION WITH APPROACH SPAN ALIGNMENT AND ECCENTRIC SHAFT FULLY RAISED. REACTION TO ACCOMMODATE SWING SPAN LIVE LOAD.
- (3) BOTTOM FLANGE OF BOTTOM CHORD SHOWN IN RAISED POSITION TO SHOW MAXIMUM CLEARANCE.
- (4) PRESSURE TEST CYLINDERS IN SHOP. CRITERIA FOUND IN SPECIFICATIONS.
- (5) COORDINATE HYDRAULIC CONNECTIONS WITH HYDRAULIC WORK.
- (6) PROVIDE STAINLESS STEEL, TYPE 316 ANCHOR BOLTS AS SHOWN. ALL ANCHOR BOLTS CONNECTING SUPPORT TO MASONRY SHALL MEET THE GENERAL REQUIREMENTS PER DRAWING M-01 AND M-02
- (7) SEE DETAIL 1 ON M-05 FOR ROD END.

END LIFT CYLINDER DATA	
BORE Ø	125 mm
ROD Ø	75 mm
TOTAL STROKE	525 mm
WORKING STROKE	505 mm
RESERVE STROKE, EXTENDED	10 mm
RESERVE STROKE, RETRACTED	10 mm
ROD END CUSHION LENGTH	MFR'S STD
BLIND END CUSHION LENGTH	MFR'S STD
SPEED, CONSTANT VELOCITY	50 MM/SEC
ROD END SERVICE PRESSURE	13.8 MPA
BLIND END SERVICE PRESSURE	16.9 MPA
ROD END SERVICE FORCE	112 kN
BLIND END SERVICE FORCE	201 kN
ROD END MAX FORCE	168 kN
BLIND END MAX FORCE	301 kN



04		
03		
02		
01	ISSUED FOR TENDER	2018-07-20
revision		date

Do not scale drawings.  
Verify all dimensions and conditions on site and immediately  
notify the Departmental Representative of all discrepancies.

<b>A</b>	Detail No.
<b>B</b>	No. du détail
<b>C</b>	drawing no. - where detail required dessin no. - où détail exigé
<b>C</b>	drawing no. - where detailed dessin no. - où détaillé

project title titre du projet	Ontario
HAMLET BRIDGES (BRIDGE 57 & 58) SWING AND FIXED BRIDGES	

drawing title titre du dessin	END LIFT DETAILS I
----------------------------------	--------------------

drawn by dessiné par	THOMAS NIEDZWIADK	
designed by conc par	JEFF KEYT	
approved by approuvé par	JEFF KEYT	
bid offre	JULIO LEON	project manager administrateur de projets
project date date du projet	2018-07-20	
project no. no. du projet	R.073593.001	
drawing no. dessiné no.	M-16	