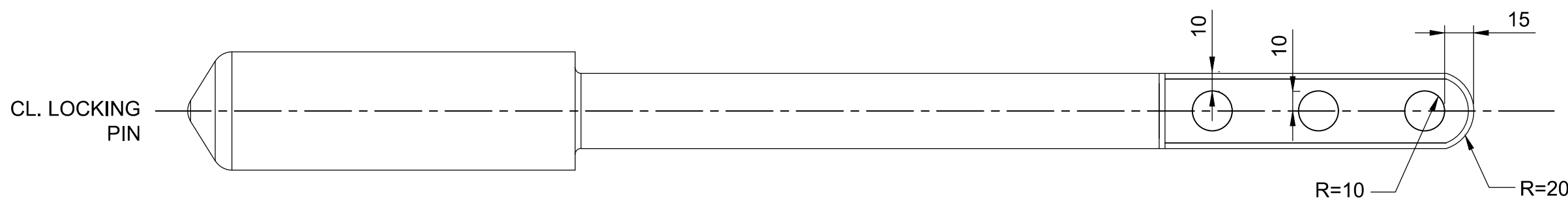


LOCKING PIN

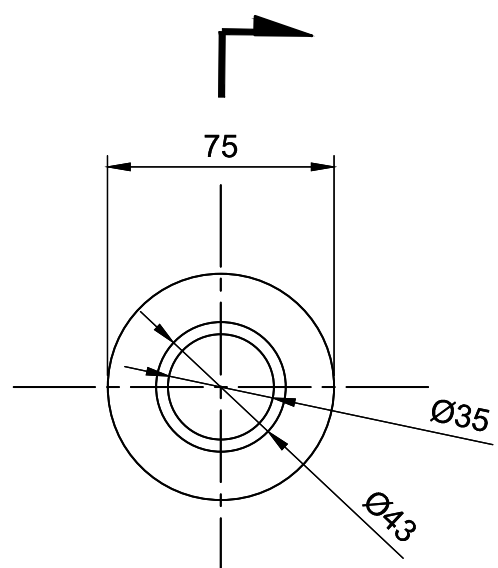
1:2.5

ASTM A668 CLASS E



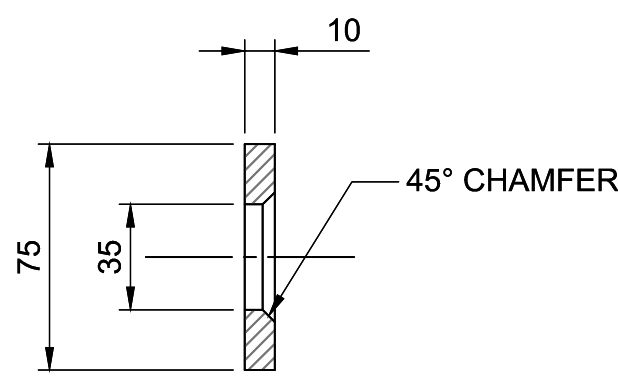
SECTION

1:2.5



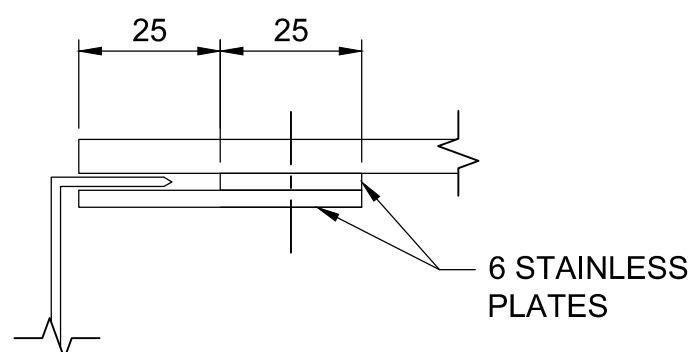
WASHER-ELEVATION

1:2.5



SECTION

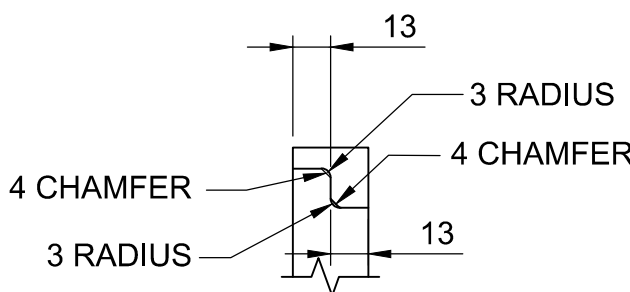
1:2.5



1 DETAIL

BUSHING

ASTM B22 C911



B SECTION

BUSHING

1:2.5

NOTES:

- SEE GENERAL NOTES ON SHEETS M-01 AND M-02.
- SPRING DATA MATERIAL-SPRING-TEMPERED STEEL
END TYPE-CLOSED AND FLAT
OVERALL LENGTH305MM
OD 106MM
ID 85MM
WIRE DIAMETER 10.3MM
WIRE SHAPE - ROUND
COMPRESSED LENGTH 121.2MM
MAXIMUM LOAD 2.46kN
RATE 13.3 N/MM



Public Works and
Government Services Canada
Travaux publics et
Services gouvernementaux Canada

PARSONS



| | | |
|----------|-------------------|------------|
| 04 | | |
| 03 | | |
| 02 | | |
| 01 | ISSUED FOR TENDER | 2018-07-20 |
| revision | | date |

Do not scale drawings.
Verify all dimensions and conditions on site and immediately
notify the Departmental Representative of all discrepancies.

| | |
|---|---|
| A | Detail No. |
| B | No. du détail |
| C | drawing no. - where detail required dessin no. - où détail exigé |
| | drawing no. - where detailed dessin no. - où détaillé |

project title
titre du projet

Ontario

HAMLET BRIDGES
(BRIDGE 57 & 58)
SWING AND FIXED BRIDGES

drawing title
titre du dessin
LOCKING PIN DETAILS

drawn by
dessine par
GREG TAYLOR

designed by
conc par
JEFF KEYT

approved by
approuve par
JEFF KEYT

bid
offre
JULIO LEON

project manager
administrateur
de projets

project date
date du projet
2018-07-20

project no.
no. du projet
R.073593.001

drawing no.
dessine no.
M-19