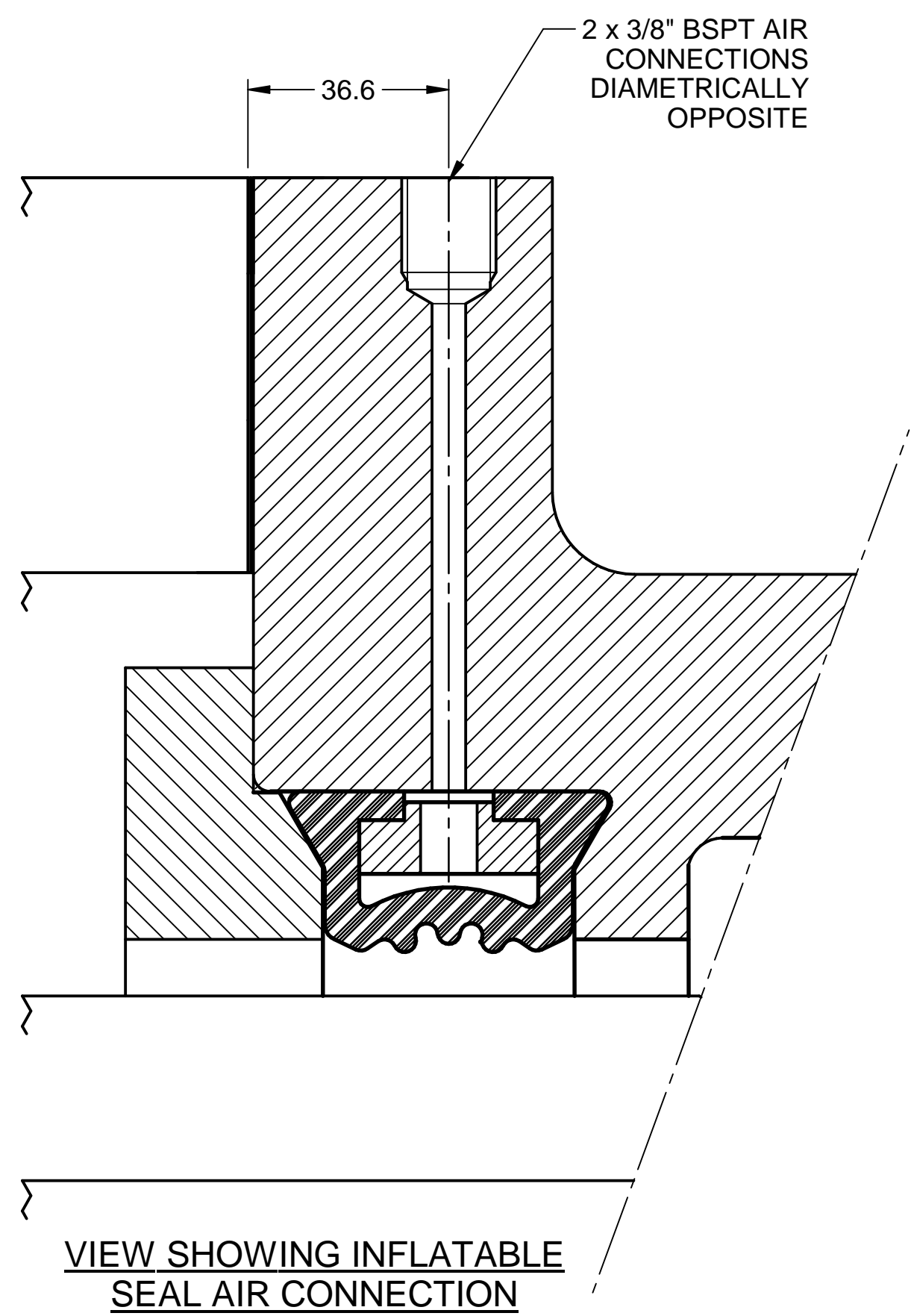
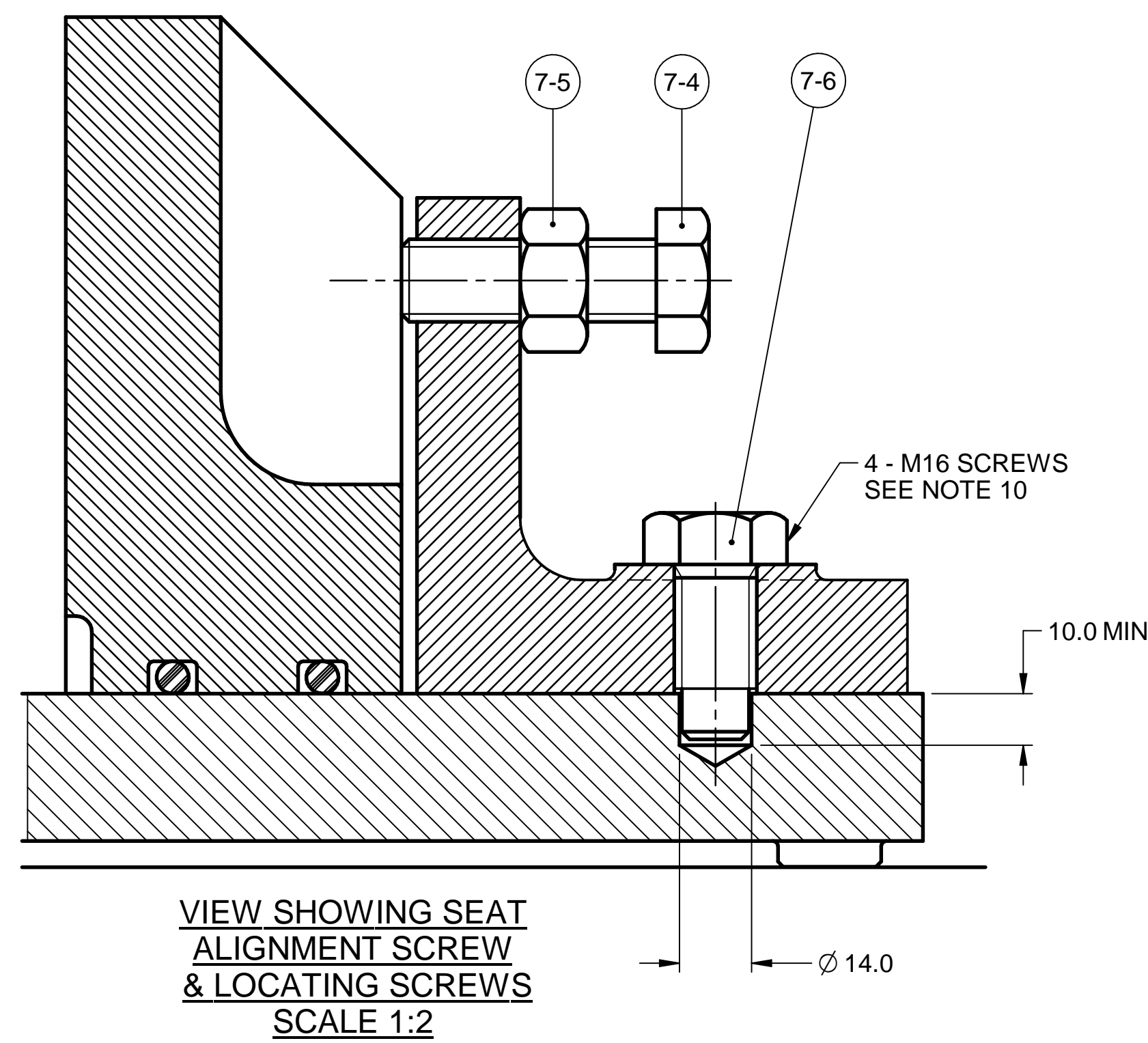


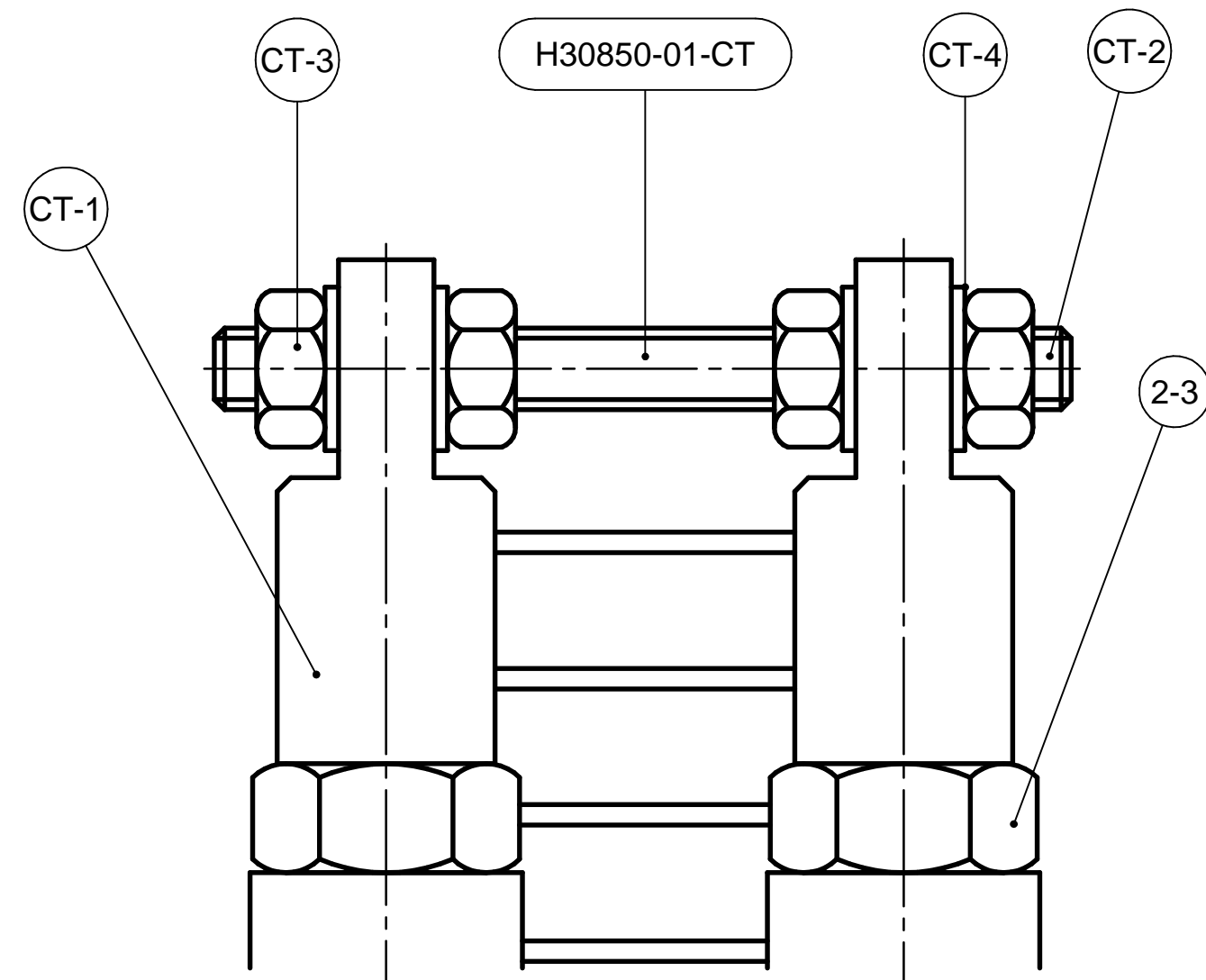
VIEW SHOWING MOUNTING RING BUTT BOLTS



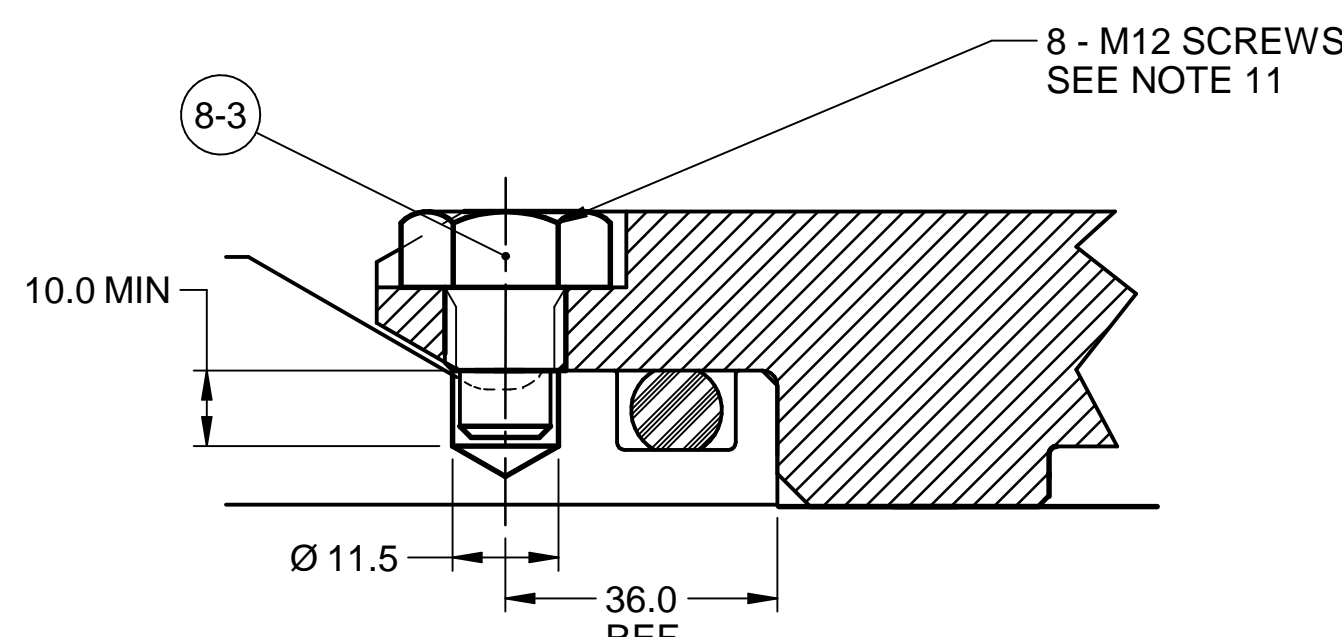
VIEW SHOWING INFLATABLE SEAL AIR CONNECTION



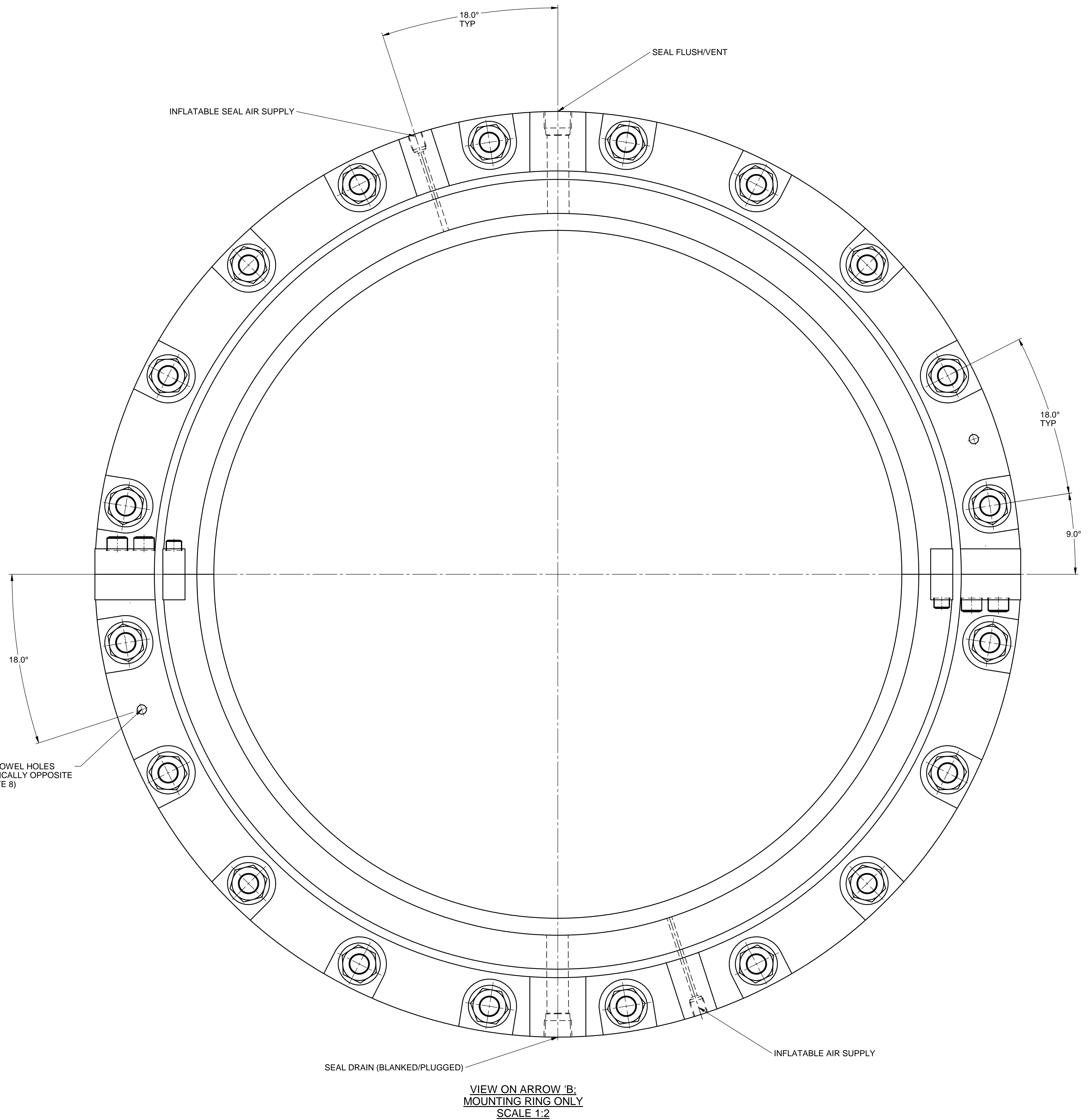
VIEW SHOWING SEAT ALIGNMENT SCREW & LOCATING SCREWS
SCALE 1:2



VIEW ON ARROW 'A' SHOWING COMPRESSION TOOL ASSEMBLY LOCKED FOR TRANSIT PURPOSES
REMOVE BEFORE ROTATING SHAFT
(NOT TO SCALE)



VIEW SHOWING OFFSET SPLIT LINER SCREWS



VIEW ON ARROW 'B': MOUNTING RING ONLY
SCALE 1:2

INSTALLATION

CLASSIFICATION: LR	1ST ANGLE:	ACCESS CODE: 4	OWNER: COG	YARD: -	CUSTOMER: WCA
FLUIDS: INTERNAL EXTERNAL	WATER AIR		VESSEL NAME: OCGS TERRY FOX	USED ON: ICEBREAKER	REF/FUNC. LOC.: 100015596
PRESSURES, BAR: INTERNAL EXTERNAL DIFFERENTIAL	MIN NOM MAX		DRAWN BY: W. CROOK	CHECKED BY: J. BURT	MAX. MASS:
SHAFT MOVEMENTS: AXIAL INBOARD, mm AXIAL OUTBOARD, mm RADIAL, mm ANGULAR, °	- - - -	2.5 8.5 10 -	DRAWN DATE: 2 MAR 2015	DATE REVISED: 5 OCT 2015	SHEET: 2 OF 2
SHAFT SPEED, RPM	- 120	-	SEAL CODE BASED ON: 41615/910/41/1013/38/75/41863 FL = 429 ± 3.3	TITLE: GA OF 840 MOD 800 TYPE MA SEAL	
TEMPERATURE, °C: INTERNAL EXTERNAL	-5 -40	-40	Wärtsilä UK Ltd., 4, Marple's Way, Havant, Hampshire, PO9 1NX, UK	SIZE: A0	DRAWING NUMBER: H30850-01
			© 2015 Registered Office: Wärtsilä UK Ltd., Havant, Hampshire, UK	REV: C	