



Parks
Canada

Parcs
Canada

Canada

Sable Island National Park Reserve

Water Infrastructure Upgrade Bidders Meeting

August 2018





Introduction

- Sable Island is situated 300 km southeast of Halifax, about 175 km from Canso. The island is primarily sand dunes with a few fresh water ponds. Today the island operates as a National Park Reserve and weather station.
- The island hosts a hand full of staff from Parks Canada and Department of Environment and Climate Change Canada, located at Main Station.
- The island's variable weather poses a challenge for access.





Main Station

- The island has numerous buildings including a weather station, maintenance garage, emergency generator building, food warehouse and several residential buildings.
- The island electrical power is supplied by onsite generators.





Site Plan





Water Supply

- All of the potable water for Main Station comes from the Pumphouse. When the Pumphouse is deactivated there is no alternate source for drinking or sanitary water.





The Project

- The purpose of this project is to fully replace and upgrade all of the water pumping, treatment and electrical equipment in the Pumphouse.
- Install a new pressure tank in the Visitors Quarters.
- Remove the old equipment from the Pumphouse.
- Stage removals to maintain water supply during the work as indicated.
- Complete the work as quickly as possible to minimise downtime, in Fall 2018.



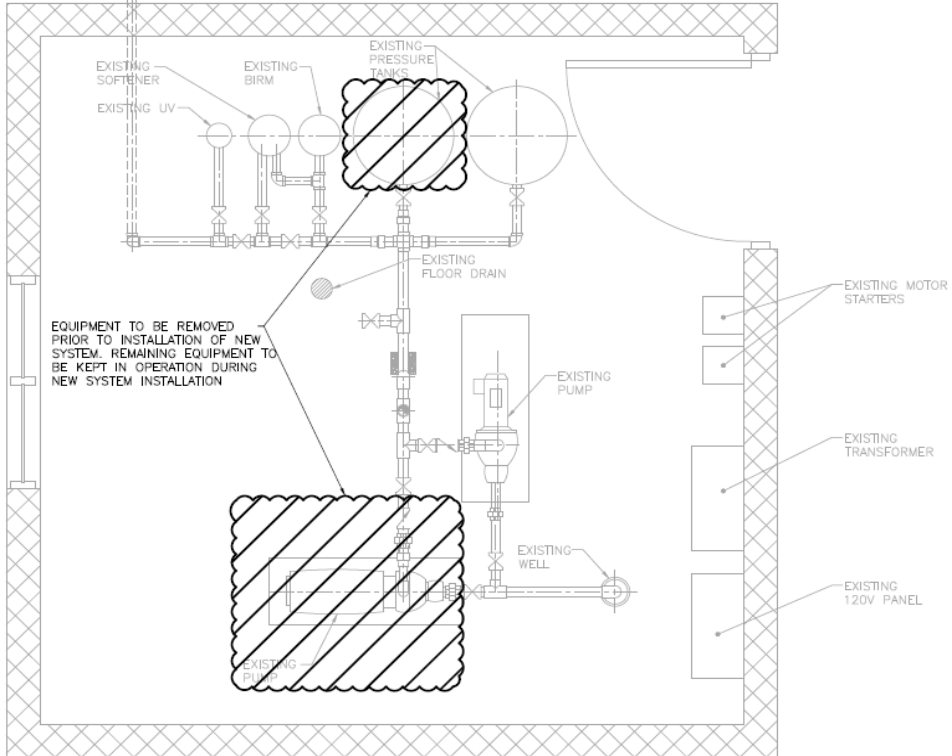
The Pumphouse

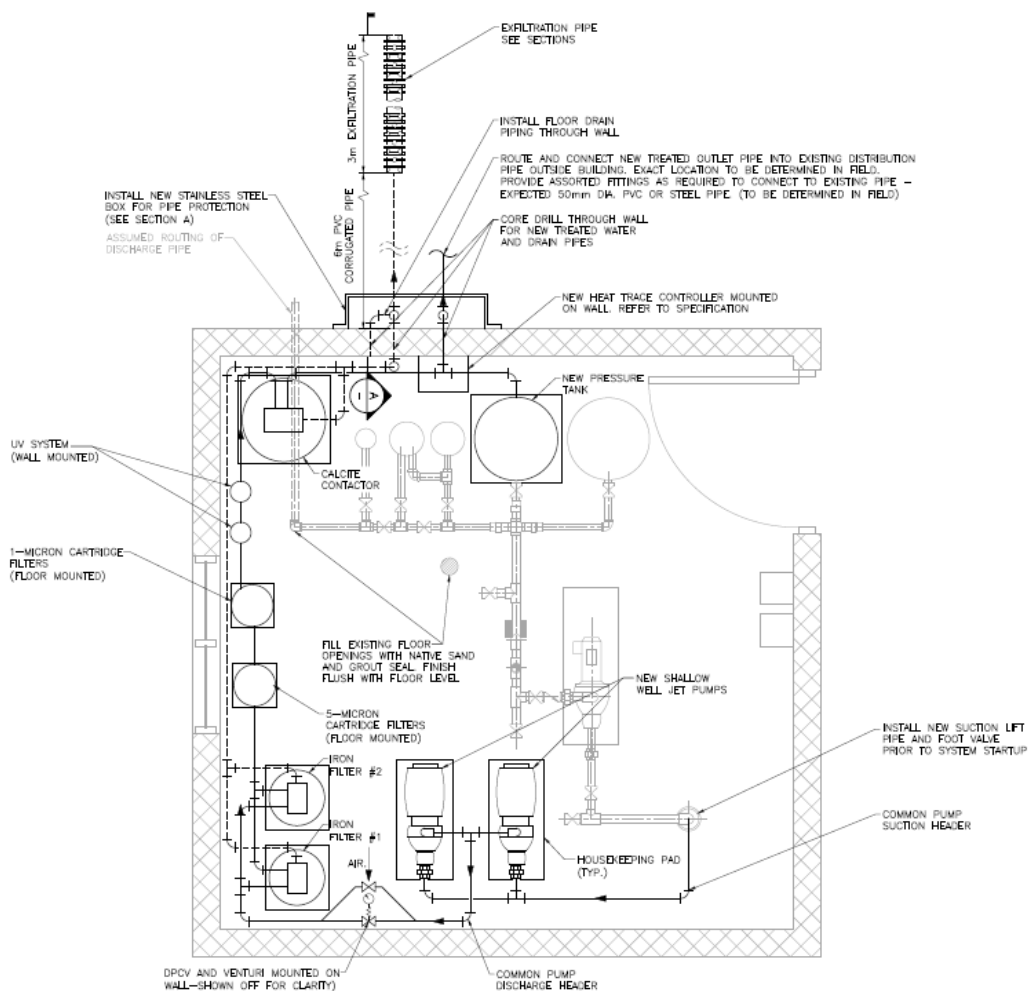




Existing Pumphouse Layout

ASSUMED ROUTING OF
DISCHARGE PIPE





PLAN— NEW PUMP HOUSE

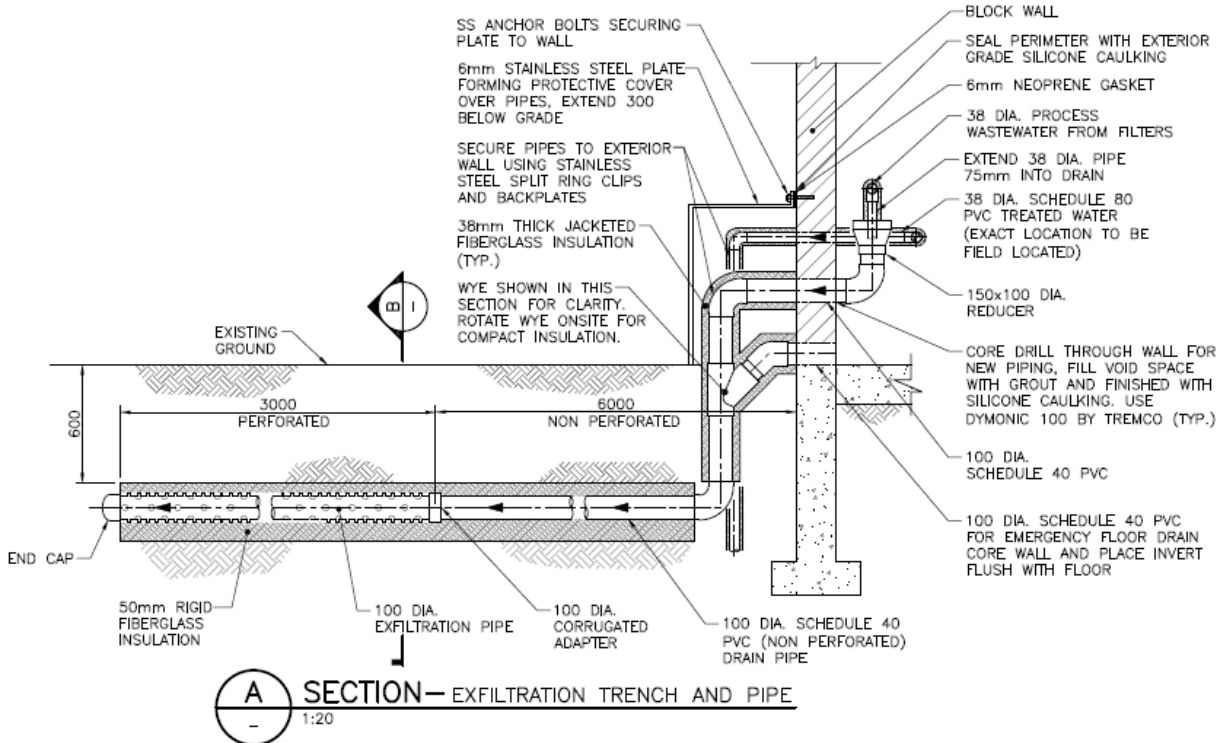
1:20



Required Excavation

PLAN— EXISTING PUMP HOUSE

1:20





Water Feed Visitors Quarters





Equipment on the Island

- Parks Canada has a skidsteer on the island, Bobcat T650.
- Parks Canada staff can assist the contractor with unloading aircraft and moving larger items to the Pumphouse.





Travel / Access

- Travel to and from the island is typically by means of fixed wing aircraft. Helicopter options are available, as well as by barge.
- Weather and wildlife can impact the ability to land on the island. Contractor to factor in travel delays into their bid, plan the most effective way to bring materials and personnel to the island.
- The contractor is responsible to make their own travel arrangements and coordinate with PCA staff.
- Fixed wing aircraft land on South Beach.
- Helipad located at Main Station.





Fixed Wing

Air charter companies currently servicing the island include:

- Air Borealis - operates a Twin Otter
- Sable Aviation - operates a BN-2A Britten Norman Islander





Helicopter

- Vision Air Helicopters - operates a S-76 A++





Accommodations

- Accommodations on the island will be provided by Parks Canada in the Visitors Quarters building for the project.
- Rooms will be assigned to the Contractor. Depending on availability the contractor may need to have 2 people (max) per room.
- The house has several bedrooms with a common kitchen, washrooms and living area. Washer and dryer are available.
- There may be other personnel staying in the Visitor Quarters at the same time in the other bedrooms, common areas must be shared.
- The contractor is responsible to provide their own bedding, food, water, towels and other personal items.





Points of Interest

- All work must abide by federal and provincial codes and standards, most stringent will govern, as well as the Parks Canada BIA in the specifications.
- Weather delays are very common while travelling to and from Sable Island. The Contractor must plan for delays in their bid. Delays could last several days, and depend on the type of aircraft being used.
- Do not make any contact with the animals.
- Sensitive ecosystem, minimize any disturbance to the grass and environment.
- Offsite disposal is not part of this contract. Contractor is responsible to supply packing materials to contain all garbage and old equipment on pallets, and move to the designated area on the island for Parks Canada to remove at a later date. Ensure waste is stored and secured so it does not get blown around by the wind.



Questions?

