

Solicitation No. – N° de l’invitaion
EA003-191143/A

Amd. No. - N° de la modif.
1

Buyer ID – Id de l’acheteur
PWD005

Client ref. No. - N° de ref. du client
R.089926.001

File No. N° du dossier
PWD-8-41086

CCC No./N° CCC – FMS No/N° VME

ADDENDUM NO. 1

**THE FOLLOWING AMENDMENT TO THE BID DOCUMENTS IS EFFECTIVE IMMEDIATELY. THE
ADDENDUM SHALL FORM A PART OF THE CONTRACT DOCUMENTS.**

SPECIFICATIONS:

1. Changes to Architectural Specifications:

- 1.1. 06 83 16 STRUCTURAL FIBREGLASS REINFORCED PANELING: Acceptable Alternate Product – “GLASBORD FSI, CLASS ‘A’ AS MARKETED BY CRANE COMPOSITES. PRODUCT TO BE SUPPLIED AND INSTALLED WITH ALL ASSOCIATED TRIMS, FASTENERS AND ACCESSORIES AS RECOMMENDED BY THE MANUFACTURER.”
- 1.2. 08 36 13 SECTIONAL DOORS: SECTION 3.2.1 REMOVE “LOCATE IN LOCATIONS SHOWN ON DRAWINGS OR DETERMINED ON SITE WITH DEPARTMENTAL REPRESENTATIVE.” REPLACE WITH “MOUNT MANUAL CONTROL STATION 1220mm ABOVE FINISHED FLOOR.”

2. Changes to Mechanical Specifications:

- 2.1. 22 42 03 COMMERCIAL WASHROOM FIXTURES: SECTION 2.3.3 LAVATORY TRIM, “CHANGE TRIM LISTED IN SPECIFICATION TO MATCH TYPE SPECIFIED IN SCHEDULE ON MECHANICAL DRAWINGS.”

3. Changes to Appendices:

- 3.1. REMOVE APPENDIX ‘A’ LEED, REPLAEC WITH NEW APPENDIX ‘A LEED’.
- 3.2. REMOVE APPENDIX ‘B’ GEOTECH, REPLACE WITH NEW APPENDIX ‘B’ GEOTECH.
- 3.3. REMOVE APPENDIX ‘C’ CEEA PED OLD PERLICAN CP2, REPLACE WITH CEEA PED CP2 TWILLINGATE.
- 3.4. REMOVE APPENDIX ‘D’ COMMISSIONING PLAN_DRAFT_OLD PERLICAN, REPLACE WITH APPENDIX ‘D’ TWILLINGATE RCMP HAZMAT SURVEY FINAL REPORT.
- 3.5. REMOVE APPENDIX ‘E’ SAMPLE COMMISSIONING FORMS, REPLACE WITH APPENDIX ‘E’ TWILLINGATE ASBESTOS REASSESSMENT PROJECT ABATEMENT.
- 3.6. ADD APPENDIX ‘F’ TWILLINGATE RCMP BUILDING-FINAL REPORT.
- 3.7. ADD APPENDIX ‘G’ TWILLINGATE RCMP ASBUILTS.
- 3.8. ADD APPENDIX ‘H’ COMMISSIONING PLAN_DRAFT_TWILLINGATE.
- 3.9. ADD APPENDIX ‘I’ SAMPLE COMMISSIONING FORMS.

DRAWINGS:

1. Changes to Architectural Drawings:

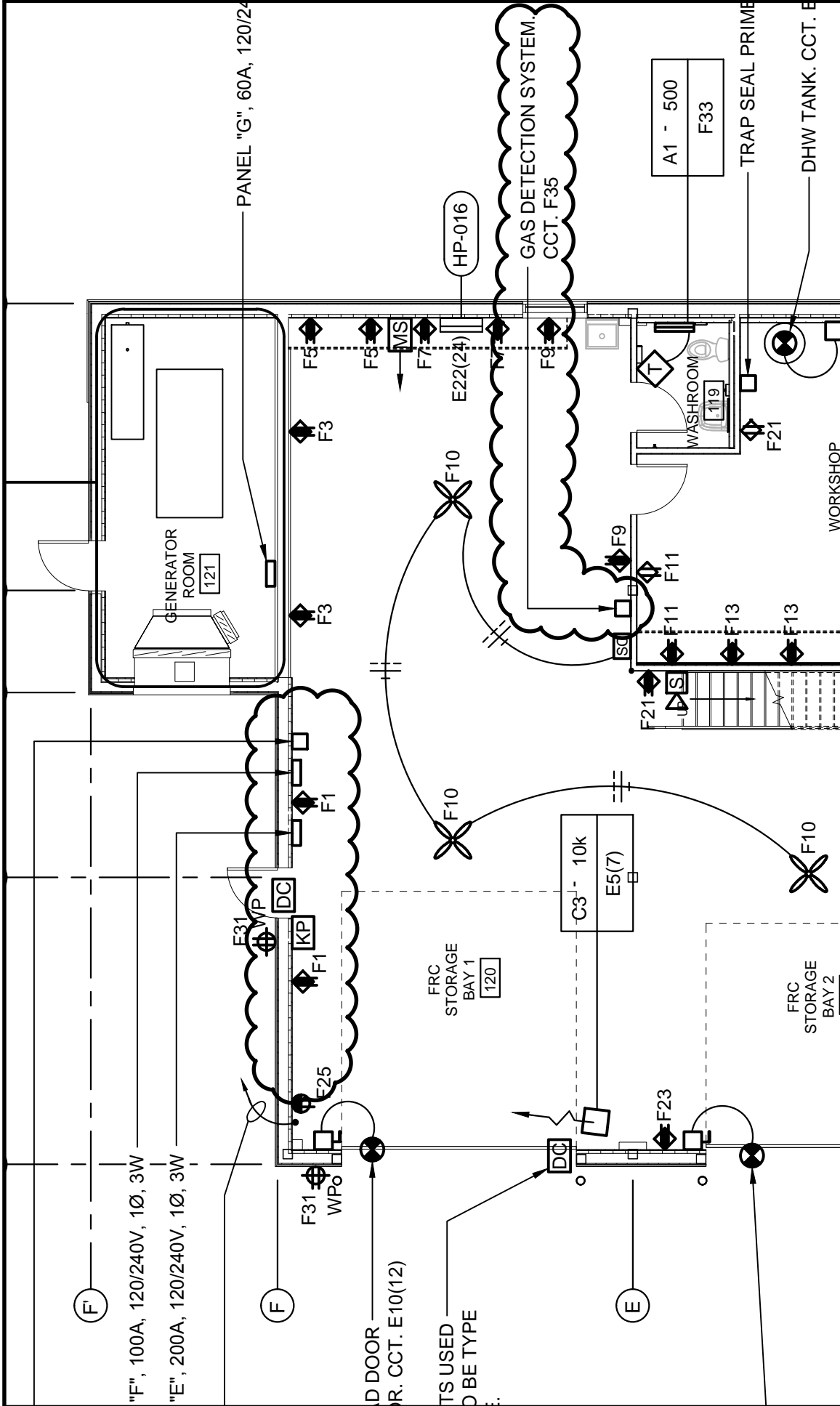
- 1.1. REFERENCE DETAIL 4 ON DRAWING A103 (EQUIPMENT SCHEDULE): REPLACE E:010 DESCRIPTION WITH “TACKBOARD: FACTORY FRAMED, 1200mm HIGH X 2500mm WIDE; 6mm

THICK CORK SURFACE LAMINATED TO 6mm HARDBOARD BACKING; EXTRUDED ALUMINUM FRAME TO HAVE SATIN ANODIZED FINISH.”

2. Changes to Electrical Drawings:

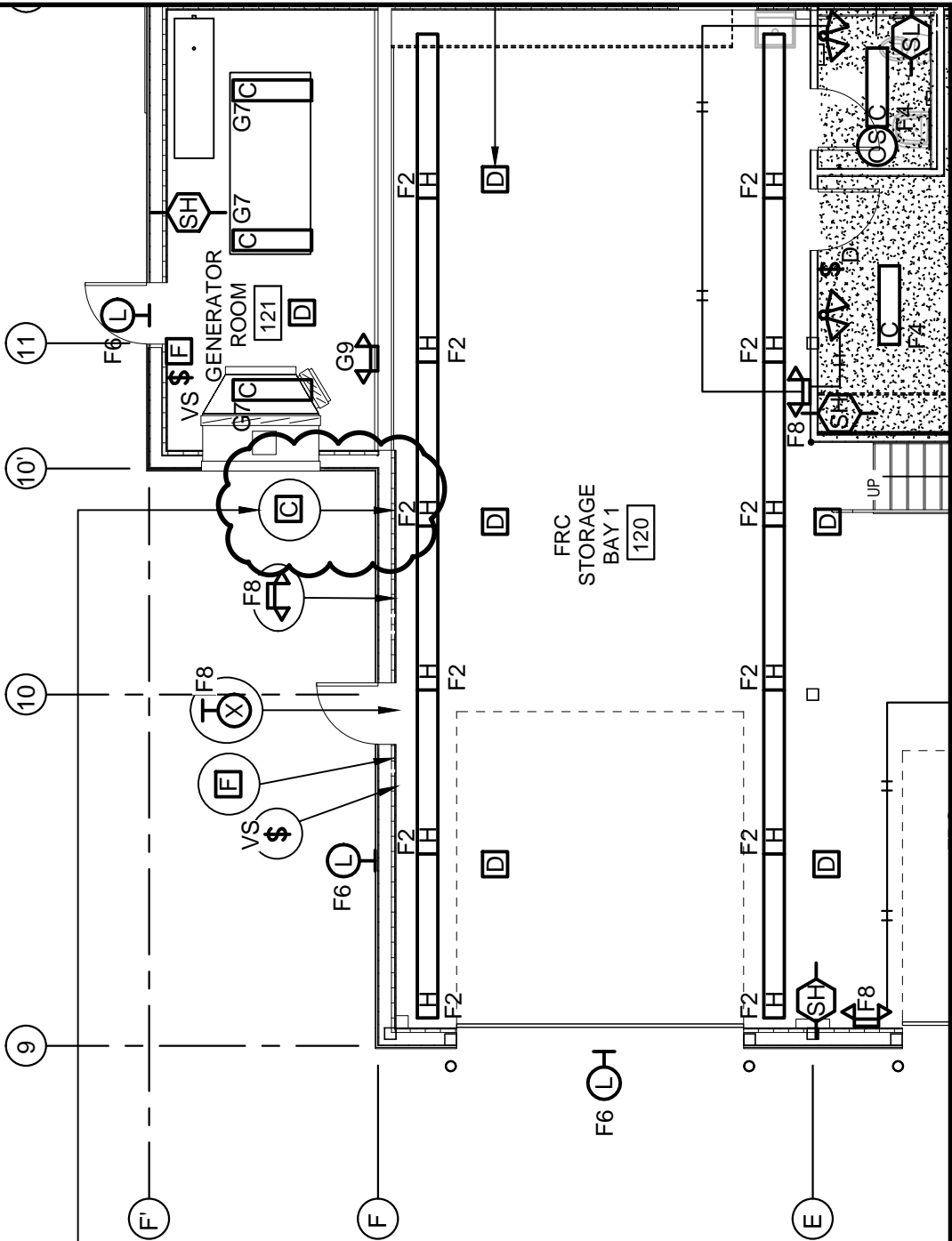
- 2.1. ELECTRICAL EQUIPMENT LAYOUT IN GENERATOR ROOM TO BE ARRANGED AS PER SKETCH ESK001. REFERENCE DRAWING E107.
- 2.2. PANELS ‘E’ AND ‘F’ TO BE RELOCATED AS SHOWN ON THE ATTACHED SKETCH ESK002. REFERENCE DRAWING E106.
- 2.3. ADD POWER CONNECTION FOR GAS DETECTION SYSTEM IN FRC STORAGE AS SHOWN ON SKETCH ESK002. SYSTEM TO BE POWERED FROM NEW 15A, 1P BREAKER ON CIRCUIT F35 AND WIRE TO BREAKER USING 2- #12 AWG RW90 COPPER PLUS 1 - #21 AWG COPPER BOND IN 21MM CONDUIT AS PER SKETCH ESK004. INCLUDE LOCK-ON DEVICE FOR THIS BREAKER/CIRCUIT. REFERENCE DRAWINGS E106 AND E703.
- 2.4. CONTACTOR FOR EXTERIOR LIGHTING AT FRC STORAGE TO BE RELOCATED AS SHOWN ON DKETCH ESK003. REFERENCE DRAWING E106.

By submission of its bid, the Bidder confirms that it has read and understands the requirements expressed in all addenda and has included all costs of these requirements in its Total Bid Amount.



 Public Works and Government Services Canada Travaux publics et Services gouvernementaux Canada	Tender Soumission	Project DFO FACILITY - SAR STATION - TWILLINGATE		Drawing title REVISED PANEL LOCATIONS - FRC STORAGE	
		Project number R.089926.001		no. du projet R.089926.001	
PWGSC Project Manager PWGSC L1 (2004)	Administrator de projets TPSGC	designed JB	date 2018.08.20	designed JB	date 2018.08.20
		drawn JB	date 2018.08.20	approved BR	date 2018.08.21
		project number ESK002		no. du dessin ESK002	

CONTACTOR FOR CONTROL OF
EXTERIOR LIGHTING ON FRC BUILDING.
REFER TO DETAIL: 4 / 603



 Public Works and Government Services Canada	Travaux publics et Services gouvernementaux Canada	project DFO FACILITY - SAR STATION - TWILLINGATE	project REVISED CONTACTOR LOCATION - FRC STORAGE
Tender	Submission	no. du projet R.089926.001	no. du dessin ESK003
PWGSC Project Manager PWGSC L1 (2004)		Administrateur de projets TP-SGC	date 2018.08.20
		approved BR	date 2018.08.21
		drawn JB	date 2018.08.20
		designed JB	date 2018.08.20
		approved BR	date 2018.08.21

PANEL F

LOCATION: FRC STORAGE MOUNTING: SURFACE 100 AMP. MAINS.
 SERVICE: 120/240V, 1Ø, 3W BRANCH CIRCUIT I.C. 10,000 AMPS RMS SYM.

LOAD DESCRIPTION	LOAD	WIRE	BKR	CIRCUIT	BKR	WIRE LOAD	LOAD DESCRIPTION	PHASE LOAD	
								A	B
REC - STORAGE BAY 1 120	800	12	20	2	15	12	750	1550	
REC - STORAGE BAY 1 120	800	12	20	3	15	12	325		1125
REC - STORAGE BAY 1 120	800	12	20	5	15	12	60	860	
REC - STORAGE BAY 1 120	800	12	20	7	15+	12	812		1612
REC - STORAGE BAY 1 120	800	12	20	9	15	12	360	1160	
REC - WORKSHOP 123	800	12	20	11	15	12	50		850
REC - WORKSHOP 123	800	12	20	13	15		886	1686	
REC - WORKSHOP 123	800	12	20	15	2P	12	886		1686
REC - WORKSHOP 123	800	12	20	17	20			800	
REC - WORKSHOP 123	800	12	20	19	20				800
REC - WORKSHOP 123	800	12	20	21	22			800	
REC - STORAGE BAY 2 122	1200	12	20	23	15				1200
REC - WATER METER	200	12	15	25				200	
REC - STORAGE LOFT 214	800	12	20	27					800
REC - STORAGE LOFT 214	800	12	20	29				800	
REC - EXTERIOR	800	12	15	31					800
REC - EXTERIOR	800	12	15	32					800
REC - EXTERIOR	800	12	15	33				500	
REC - EXTERIOR	800	12	15	34					
GAS DETECTION	100	12	15+	35					-
GAS DETECTION	100	12	15+	36					-
GAS DETECTION	100	12	15+	37					-
GAS DETECTION	100	12	15+	38					-
GAS DETECTION	100	12	15+	39					-
GAS DETECTION	100	12	15+	40					-
GAS DETECTION	100	12	15+	41					-
GAS DETECTION	100	12	15+	42					-

COMMENTS: ● - GROUND FAULT BREAKER. + - INDICATES C/W LOCK-ON DEVICE.	CONNECTED LOAD	17.2 KW.	TOTAL WATTS	8356
	ESTIMATED DEMAND	10.3 KW.	TOTAL AMPS	73.9

 Public Works and Government Services Canada	Travaux publics et Services gouvernementaux Canada	project DFO FACILITY - SAR STATION - TWILLINGATE	project REVISED PANEL SCHEDULE	designed	conqu	date
				drawn	dessiné	date
			approved	approuvé	date	2018.08.20
			BR	BR	date	2018.08.21
no. du projet R.089926.001			drawing no. ESK004		no. du dessin	