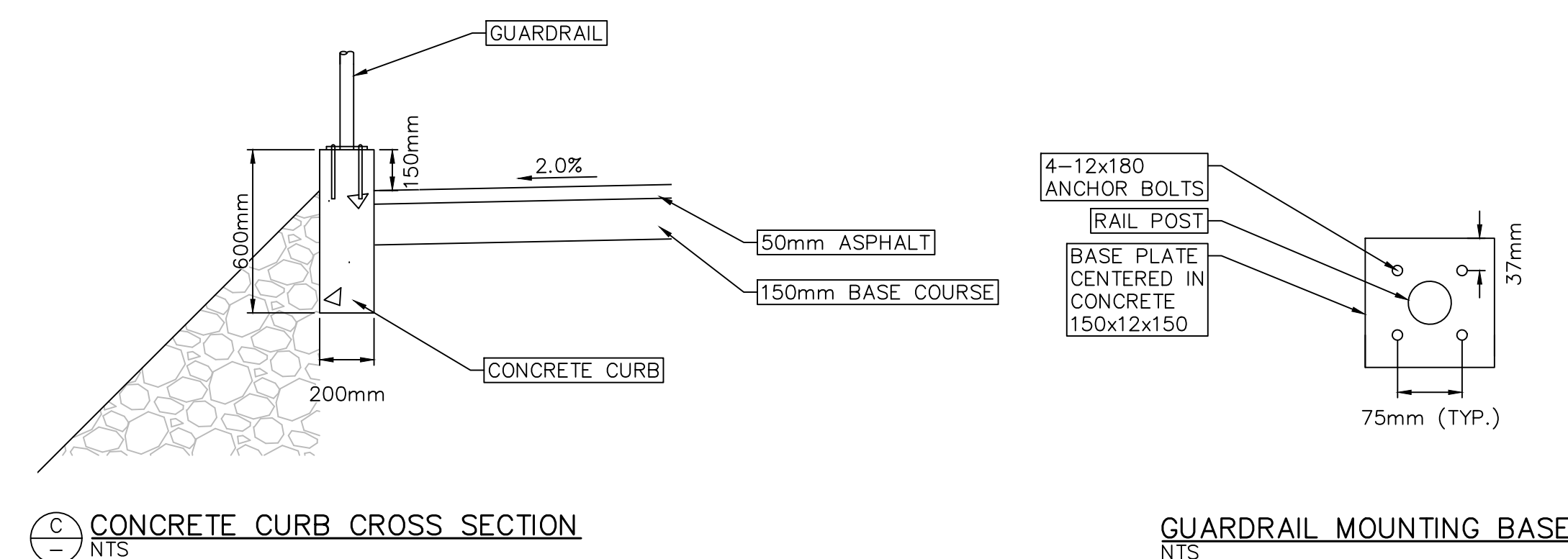
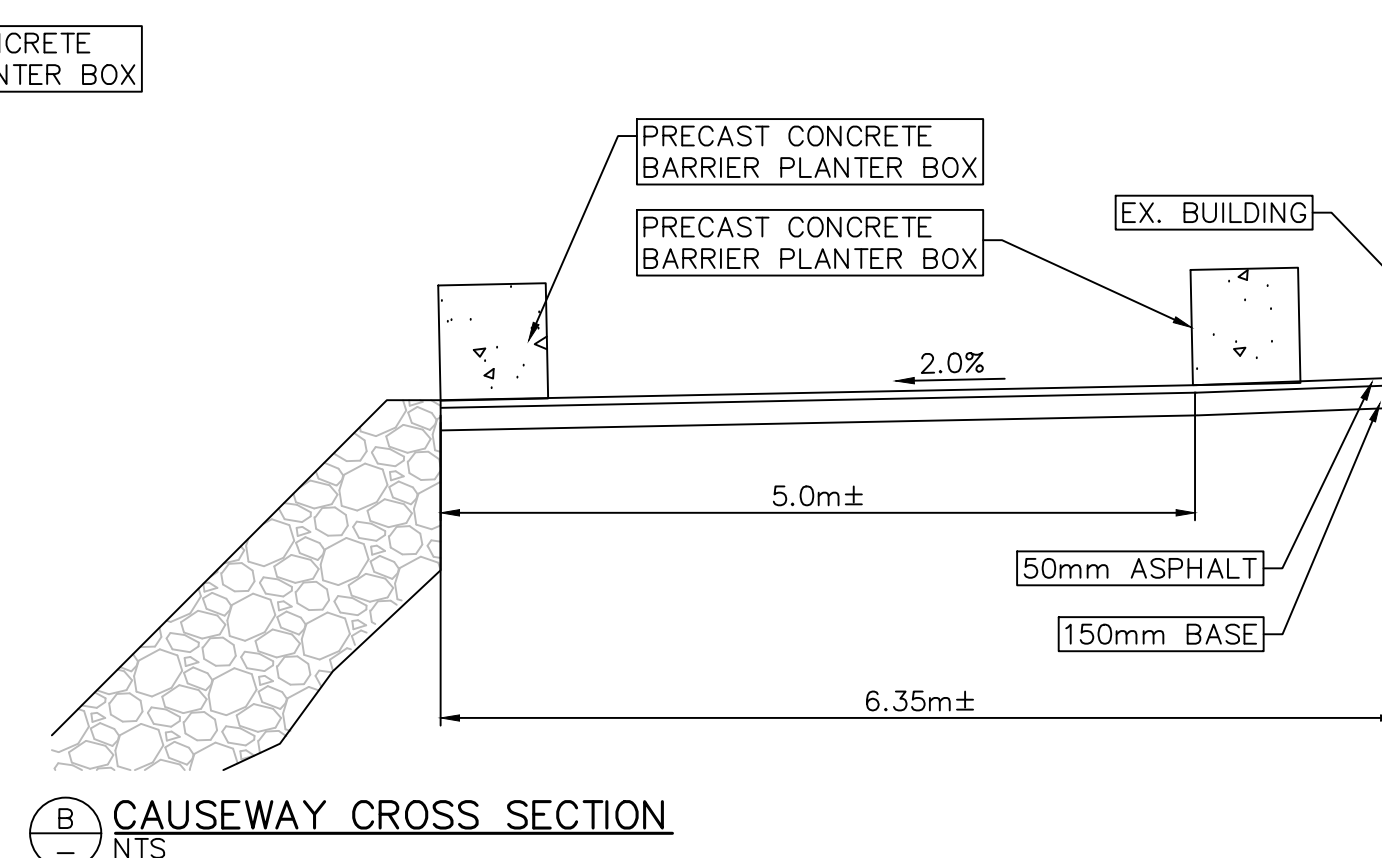


*FISHERIES AND OCEANS CANADA*  
*SMALL CRAFT HARBOURS*

**DEEP BAY**  
**CAUSEWAY RESURFACING**

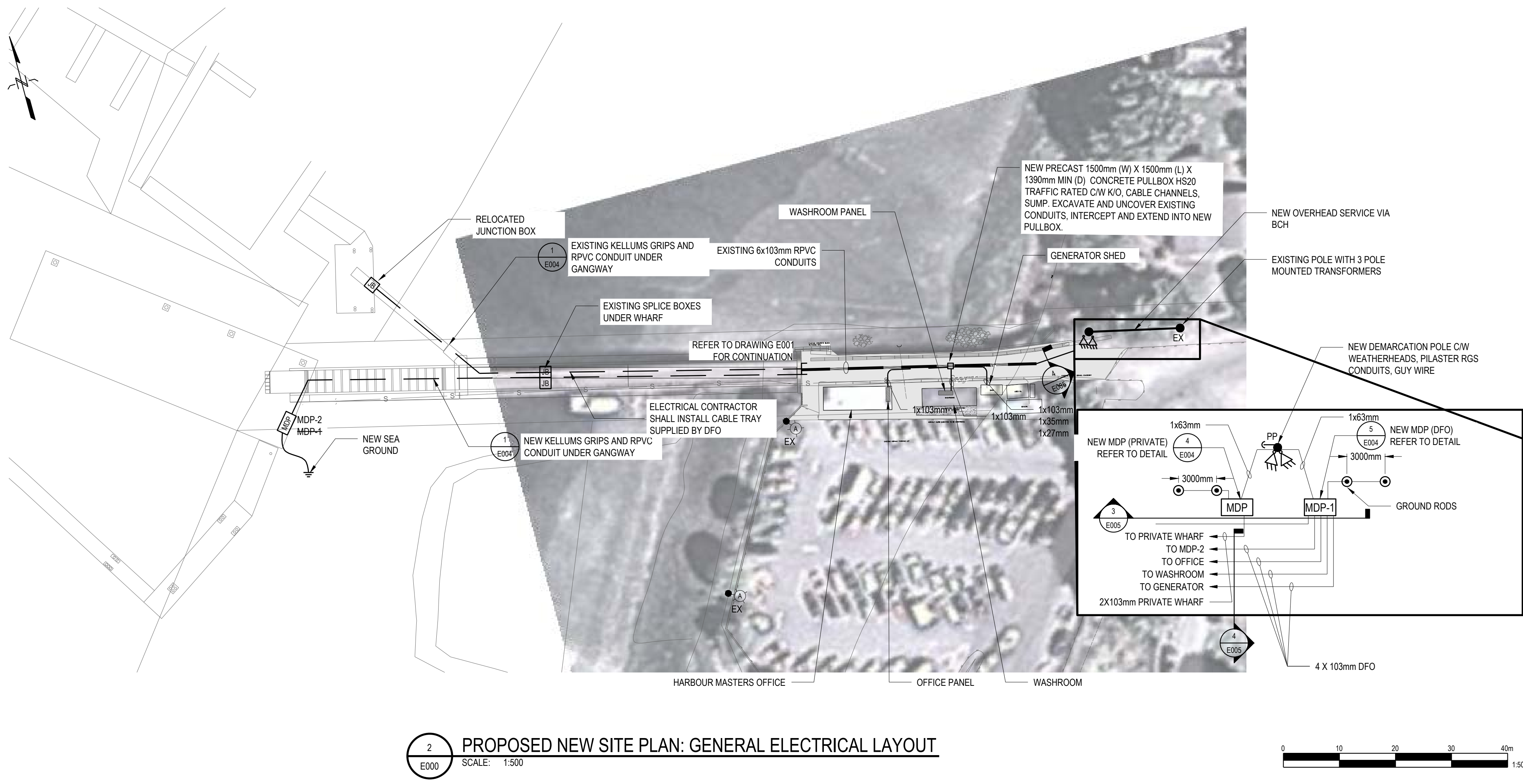
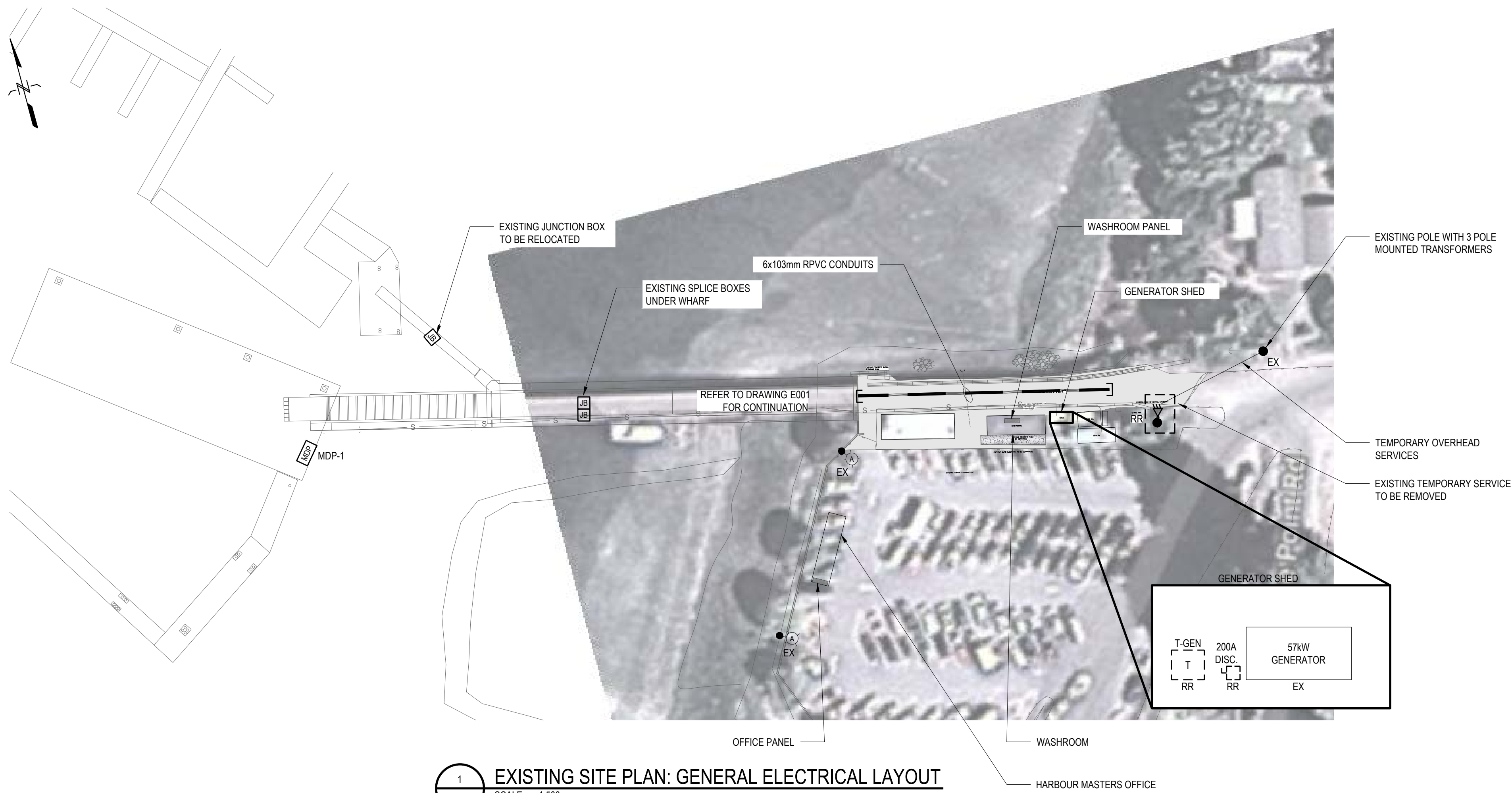
DRAWING LIST					
DRAWING NO.	DRAWING TITLE	REVISION			
		A	B	C	D
C00	COVER SHEET, GENERAL NOTES AND DRAWING LIST	X	X		
C01	SITE PLAN, GRADING PLAN AND DETAILS	X	X		

- GENERAL NOTES:
- 1. INFORMATION ON EXISTING STRUCTURES AND UTILITIES IS BASED ON ESTIMATED CONSTRUCTION EXTENTS, AND IS APPROXIMATE ONLY.
  - 2. ALL DIMENSIONS ARE IN METRIC UNITS, UNLESS NOTED OTHERWISE.
  - 3. ALL WORK TO BE IN ACCORDANCE WITH THE CONTRACT DOCUMENTS AND SPECIFICATIONS.
  - 4. CONTRACTOR TO MEASURE AND CONFIRM ALL OFFSETS IN THE FIELD PRIOR TO CONSTRUCTION. ANY DISCREPANCIES ARE TO BE REVIEWED WITH THE DEPARTMENTAL REPRESENTATIVE.



- NOTES:
1. LOCATIONS OF EXISTING UNDERGROUND MAINS ARE APPROXIMATIONS ONLY, AND MUST BE CONFIRMED BY CONTRACTOR.
  2. CONTRACTOR TO COORDINATE INSTALLATION OF UTILITIES WITH UTILITY PROVIDERS.
  3. ANY AREAS DISTURBED BY CONSTRUCTION ACTIVITIES ARE TO BE RESTORED TO A CONDITION EQUAL TO OR BETTER THAN THAT WHICH EXISTED PRIOR TO CONSTRUCTION.
  4. COORDINATE ELECTRICAL DUCT RUNS AND CONCRETE SLEEVES WITH ELECTRICAL DESIGN.
  5. PRECAST CONCRETE PLANTER BOXES TO BE (MACKAY BARRIER RECTANGULAR PLANTER 78"L x 28"W x 30"H)





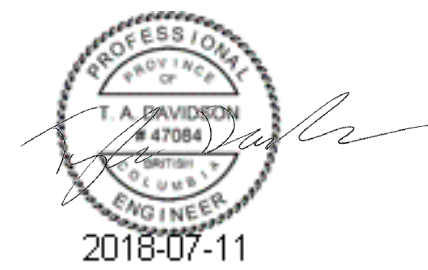
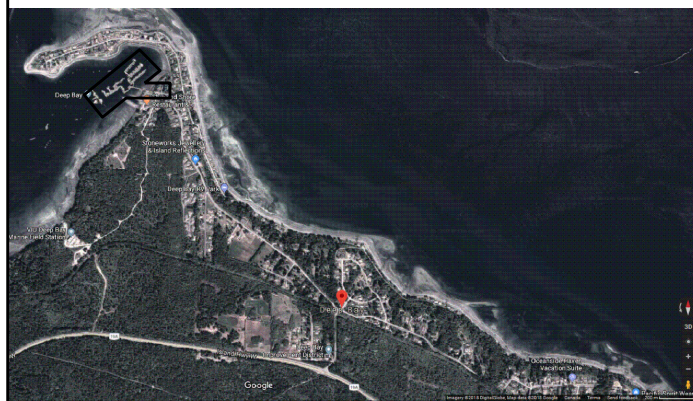
DRAWING LIST	
Drawing Number	Drawing Title
E000	SITE PLAN - EXISTING AND PROPOSED GENERAL ELECTRICAL LAYOUT
E001	SITE PLAN - EXISTING ELECTRICAL FLOAT LAYOUT
E002	SINGLE LINE DIAGRAM - PHASE I - EXISTING
E003	SINGLE LINE DIAGRAM - NEW
E004	ELECTRICAL DETAILS
E005	RECEPTACLE CABINET (RC), FLOAT AND TRENCH DETAILS
E006	TRANSFORMER RECEPTACLE CABINET (TRC) DETAILS
E007	ELECTRICAL SCHEDULES AND LOAD CALCULATIONS

ABBREVIATIONS	
AHJ	Authority Having Jurisdiction
XXF	CB Frame Rating (amps)
XXT	CB Trip Setting (amps)
BCH	B.C. Hydro
CB	Circuit Breaker or Breaker
CT	Current Transformer
CCT	Circuit
CEC	Canadian Electrical Code
DFO	Department of Fisheries & Oceans
MDP	Main Distribution Panel
NIC	Not In Contract
P	Pole
PH	Phase
RC	Receptacle Cabinet (c/w RCP & receptacle outlets)
RCP	RC Panel
SCH	Small Craft Harbour
SEE	Service Entrance Enclosure
TRC	Transformer Receptacle Cabinet (c/w TRCP, TRF and RCP)
TRF	Transformer
TRCP	TRC Panel
WP	Weatherproof Outlet
2P	Two pole CB (1 phase use)
3P	Three pole CB (3 phase use)
EX	Existing to Remain
RE	Existing to be Replaced
RR	Existing to be Removed

### ELECTRICAL SYMBOL SCHEDULE AND ANNOTATIONS

	SURFACE CEILING MOUNTED LUMINAIRE
	WALL MOUNTED LUMINAIRE
	EXTERIOR LUMINAIRE WITH POLE ASSEMBLY
	POWER POLE
	OVERHEAD UTILITY SERVICE MAST
	JUNCTION BOX
	PULL BOX
	EQUIPMENT CONNECTION
	SPECIAL CONNECTION
	PANEL
	MAIN DISTRIBUTION PANEL
	RECEPTACLE CABINET No.1
	TRANSFORMER RECEPTACLE CABINET No.1
	TRANSFORMER
	DOWNHAUL GUY WITH ANCHOR AND GUARD
	LV CIRCUIT BREAKER
	DISCONNECT SWITCH
	UTILITY POWER METER
	CONNECTION POINT
	CABINET RECEPTACLES
	REFERENCE NOTE (1 DENOTES SEE NOTE 1)
	PANEL IDENTIFICATION TAG
	NEW EQUIPMENT
	EXISTING EQUIPMENT TO REMAIN
	EXISTING EQUIPMENT TO BE REMOVED
	GROUND ROD

SITE KEY PLAN:



### DO NOT SCALE DRAWINGS

5		
4		
3	RE-ISSUED FOR TENDER	18/07/11
2	ISSUED FOR TENDER	18/06/19
1	ISSUED FOR COORDINATION	18/06/12
0	ISSUED FOR REVIEW	18/04/25

Revision/Revision	Description/Description	Date/Date
Client/client		

### FISHERIES AND OCEANS SMALL CRAFT HARBOURS

401 BURRARD STREET, SUITE 200  
VANCOUVER, BC

Project title/Titre du projet  
DEEP BAY, B.C.

### DEEP BAY HARBOUR ELECTRICAL SUPPLY

Approved by/Approuvé par

Designed by/Concept par  
T.D.

Drawn by/Dessiné par  
H.W./P.P.

PWGSC Project Manager/Administrateur de Projets TPSGC  
D.B.

PWGSC, Architectural and Engineering Resources Manager/  
Ressources Architectural et de Directeur d'Ingénierie, TPSGC

Client/client

DFO - SCH

Drawing title/Titre du dessin

### SITE PLAN - EXISTING AND PROPOSED GENERAL ELECTRICAL LAYOUT

Project No./No. du  
projet  
131-19108-24

Sheet/Feuille  
E000  
01 OF 08

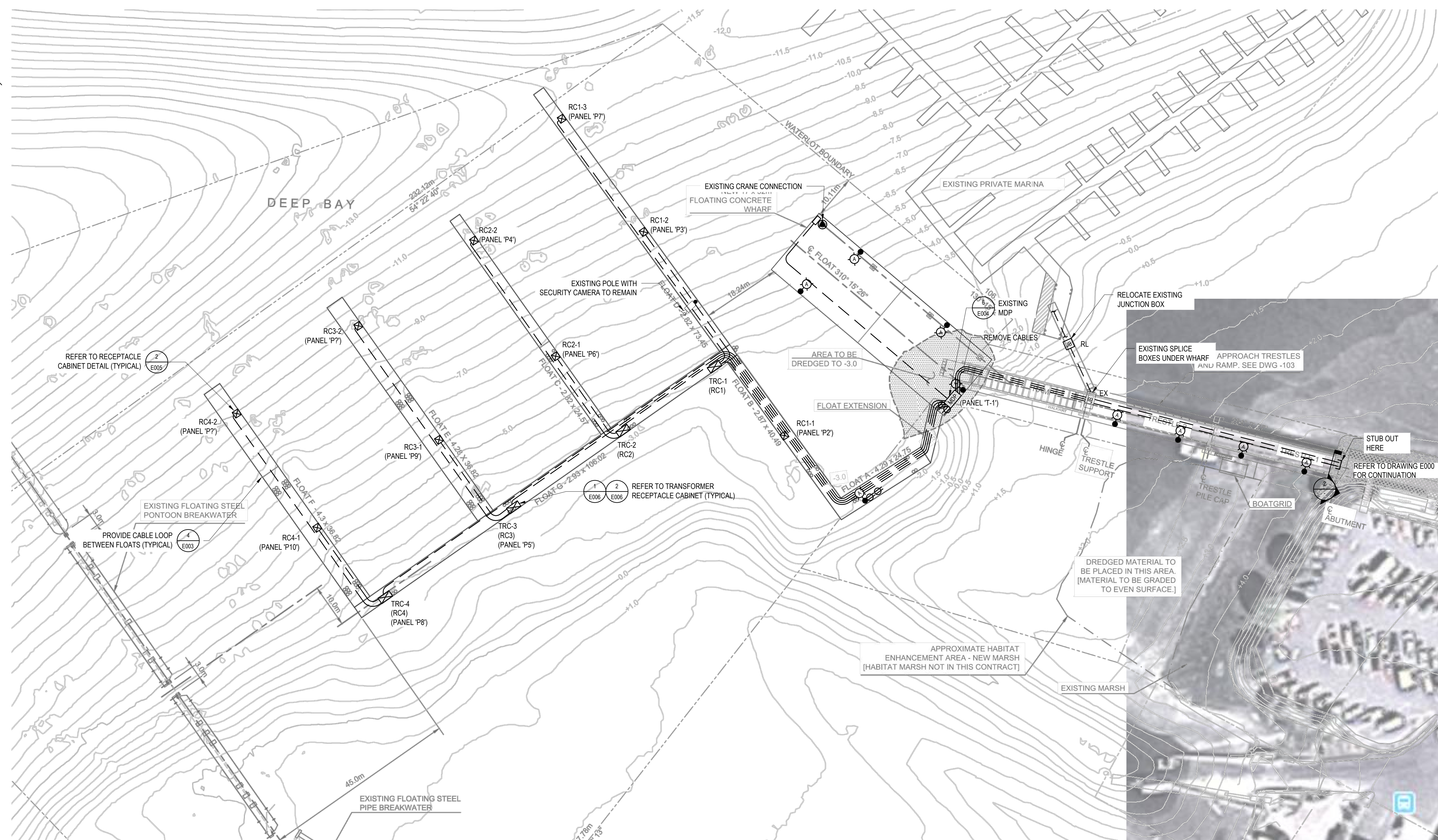
Revision no./  
La Révision  
no.  
3



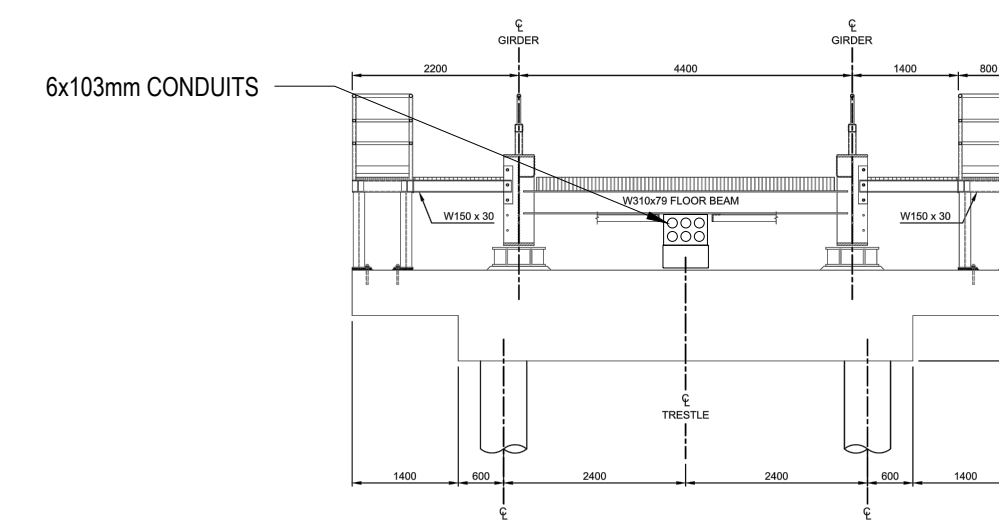


5		
4		
3	RE-ISSUED FOR TENDER	18/07/11
2	ISSUED FOR TENDER	18/06/19
1	ISSUED FOR COORDINATION	18/06/12
0	ISSUED FOR REVIEW	18/04/25

Revisión no La Révision no.	
-----------------------------------	--




1 SITE PLAN - EXISTING ELECTRICAL FLOAT LAYOUT  
E001 SCALE: 1:500



2 SECTION - TRESTLE - FOR INFORMATION ONLY  
 F001 SCALE: N.T.S.








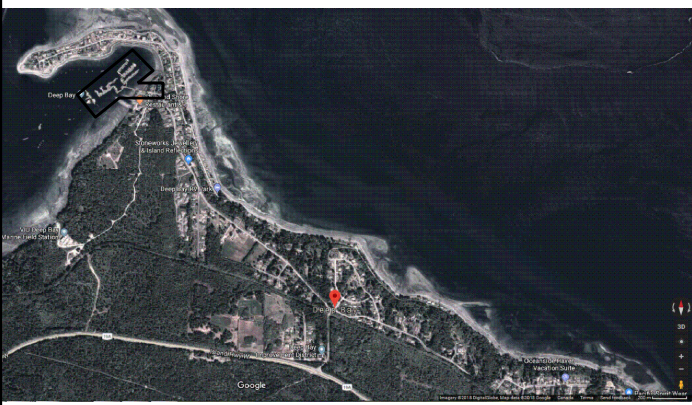
FISHERIES AND OCEANS  
CANADA

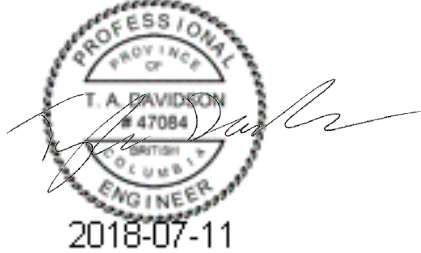
REAL PROPERTY AND SAFETY  
AND SECURITY



301-3600 Uptown Blvd  
Victoria BC, Canada  
V8Z 0B9  
T: 1 250-384-5510  
F: 1 250-386-2844  
wsp.com

SITE KEY PLAN:





2018-07-11

**DO NOT SCALE DRAWINGS**

5		
4		
3	RE-ISSUED FOR TENDER	18/07/11
2	ISSUED FOR TENDER	18/06/19
1	ISSUED FOR COORDINATION	18/06/12
0	ISSUED FOR REVIEW	18/04/25

Revision/	Description/Description	Date/Date
Revision		

Client/client

**FISHERIES AND OCEANS  
SMALL CRAFT HARBOURS**

**401 BURRARD STREET, SUITE 200  
VANCOUVER, BC**

Project title/Titre du projet  
**DEEP BAY, B.C.**

**DEEP BAY HARBOUR  
ELECTRICAL SUPPLY**

Approved by/Approuvé par

Designed by/Concept par  
T.D.

Drawn by/Dessiné par  
H.W./P.P.

PWGSC Project Manager/Administrateur de Projets TP5GC  
D.B.

PWGSC, Architectural and Engineering Resources Manager/  
Ressources Architectural et de Directeur d'Ingénierie, TP5GC

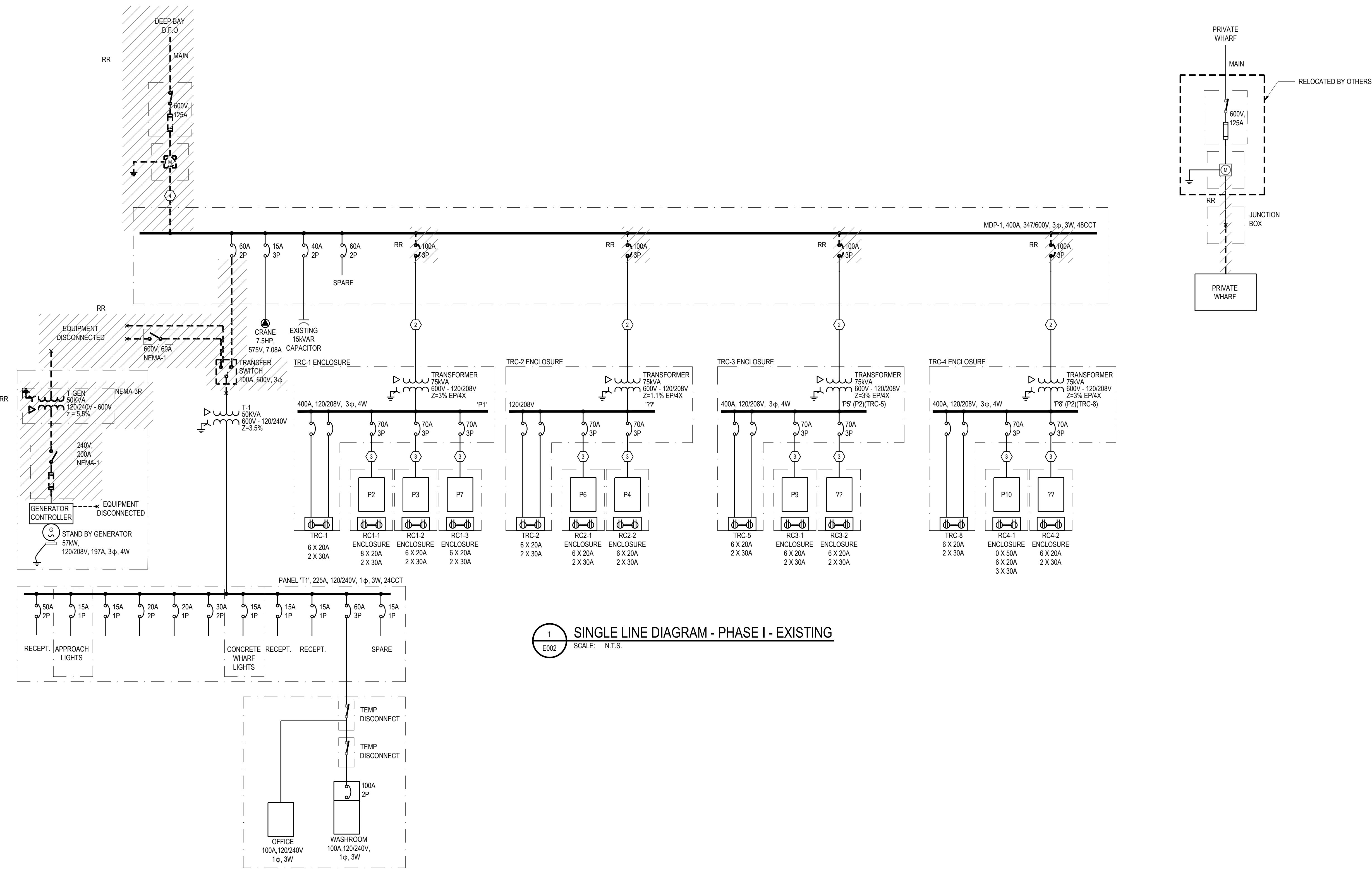
Client/client  
DFO - SCH

Drawing title/Titre du dessin

**SINGLE LINE DIAGRAM -  
EXISTING**

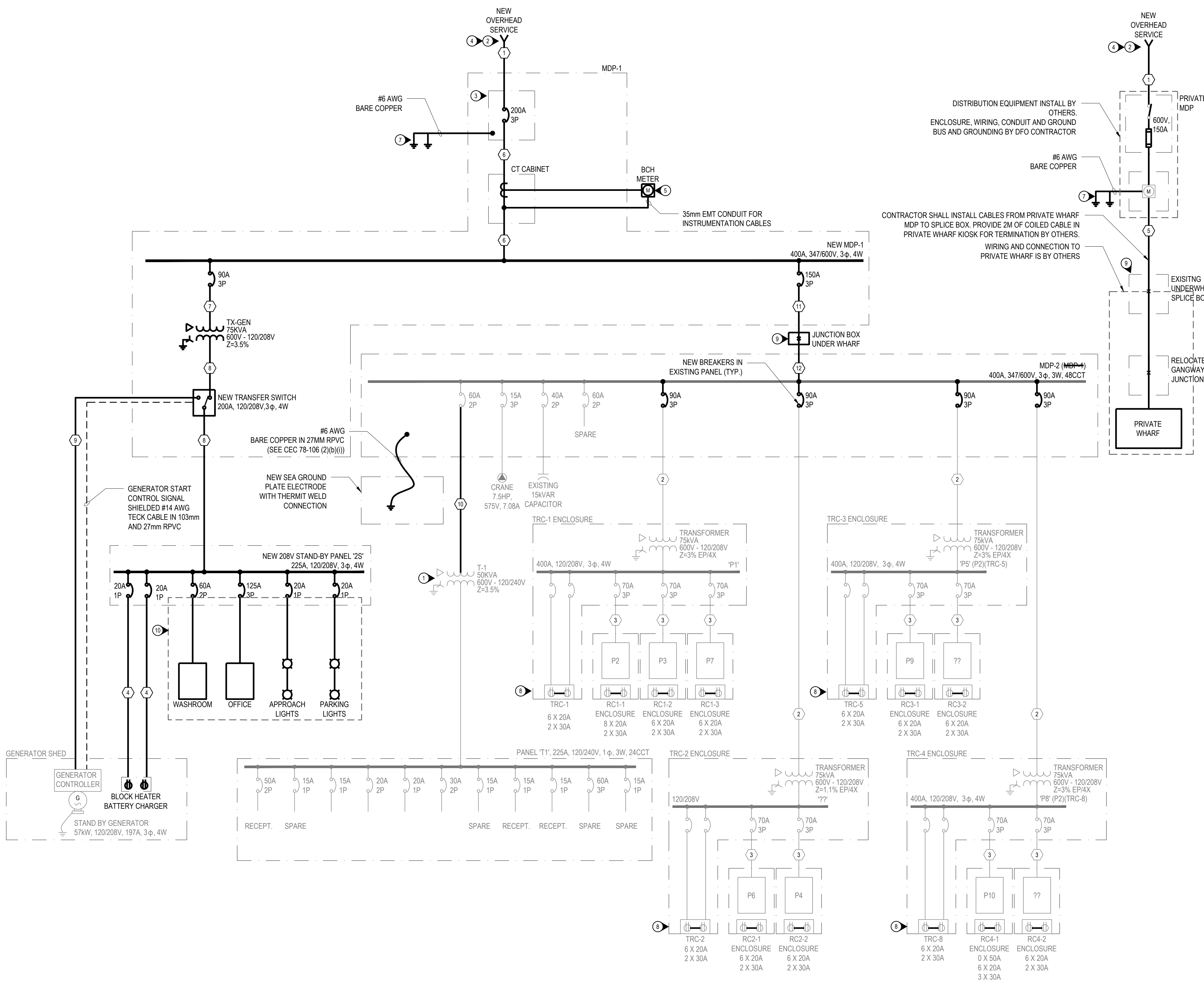
Project No./No. du projet <b>131-19108-24</b>	Sheet/Feuille <b>E002</b> 03 OF 08	Revision no./ La Révision no. <b>3</b>
---	--	---

FEEDER SCHEDULE:	
①	NOT USED
②	3C #4 TYPE G
③	4C #4 TYPE G
④	4C 4/0 TYPE G



1 SINGLE LINE DIAGRAM - PHASE I - EXISTING  
E002 SCALE: N.T.S.





SEE DETAIL 3/E004 FOR GROUNDING BUS DETAILS

SEE FACTORED LOAD CALCULATIONS AND PANEL SCHEDULES FOR BREAKER AND RECEPTACLE DETAILS

- SLD - GENERAL NOTES:**
- ALL BCH WORK IS N.I.C.
  - PROVIDE MEANS THE PURCHASE, DELIVERY, INSTALLATION, CONNECTION, COMMISSIONING AND MISCELLANEOUS REQUIRED FOR A FULLY FUNCTIONING AND SAFE OPERATING SYSTEM.
  - PROVIDE ALL EQUIPMENT UNLESS NOTED OTHERWISE.
  - PROVIDE BONDING TO GROUND AND EARTH GROUND TEST RESULTS TO DFO REPRESENTATIVE FOR APPROVAL PRIOR TO ENERGIZATION.
  - ALL EQUIPMENT RATED, CONNECTED, AND OPERATED AS 3 PHASE, 4 WIRE OR 3 PHASE, 3 WIRE EXCEPT WHERE NOTED.

- SLD - KEYNOTES:**
- PROVIDE HOUSEKEEPING PAD AND RECONNECT EXISTING CABLES. MOUNT TRANSFORMER 6" (155mm) FROM WALL.
  - METER POLE, ASSEMBLY, AND LOCATION TO BE APPROVED BY BCH AND DFO.
  - MOUNT DISCONNECT SWITCH IN ENCLOSURE.
  - PROVIDE SECONDARY CABLES, CONDUIT, MISCELLANEOUS AS REQUIRED UPSTREAM OF SAFETY SWITCH TO WEATHERHEAD AT TOP OF POLE FOR BCH TO CONNECT AS REQUIRED.
  - PROVIDE METER SOCKET WITH TEST SWITCH COMPARTMENT AND METER ENCLOSURE AS PER BCH REQUIREMENTS.
  - PROVIDE NEUTRAL FROM METER SOCKET TO WEATHERHEAD. CONNECT METER SOCKET NEUTRAL TO GROUND ROD.
  - PROVIDE GROUND RODS AND REQUIRED CONNECTIONS ADJACENT TO POLE. MAINTAIN 3000mm SEPARATION FROM OTHER GROUNDING SYSTEMS.
  - RCP SECTION IN THE TRC IS INCLUDED IN THE TRCP PANEL.
  - JUNCTION BOX FOR CABLE TRANSITION. PROVIDE LUG KITS FOR CABLE SPLICING.
  - INSTALL BY OTHERS

- FEEDER SCHEDULE:**
- 4C 3/0 AWG Cu IN 63mm RGS/RPVC CONDUIT
  - EXISTING 3C #4 TYPE G
  - EXISTING 4C #4 TYPE G
  - 2C #10 AWG Cu TECK CABLE IN 103mm/35mm RPVC CONDUIT
  - 4C 4/0 AWG Cu TECK CABLE IN 103mm RPVC CONDUITS, CABLE TRAY
  - 4C 3/0 AWG Cu IN 53mm EMT CONDUIT
  - 3C #3 AWG Cu IN 35mm EMT CONDUIT
  - 3C 3/0 AWG Cu IN 63mm EMT CONDUIT
  - 4C 3/0 AWG Cu TECK CABLE IN 103mm RPVC CONDUIT
  - 3C #6 AWG Cu IN 35mm EMT CONDUIT
  - 4C 3/0 AWG Cu TECK CABLE IN 103mm RPVC CONDUITS, CABLETRAY
  - 4C 3/0 AWG Cu TYPE G IN 103mm RPVC CONDUITS, CABLETRAY

1 SINGLE LINE DIAGRAM - NEW  
E003 SCALE: N.T.S.

FISHERIES AND OCEANS CANADA  
REAL PROPERTY AND SAFETY AND SECURITY

301-3600 Uptown Blvd  
Victoria BC, Canada  
V8Z 0B9  
T: 1 250-384-5510  
F: 1 250-386-2844  
wsp.com

SITE KEY PLAN:

2018-07-11

**DO NOT SCALE DRAWINGS**

Revision/	Description/Description	Date/Date
5		
4		
3	RE-ISSUED FOR TENDER	18/07/11
2	ISSUED FOR TENDER	18/06/19
1	ISSUED FOR COORDINATION	18/06/12
0	ISSUED FOR REVIEW	18/04/25

Client/client

**FISHERIES AND OCEANS  
SMALL CRAFT HARBOURS**

401 BURRARD STREET, SUITE 200  
VANCOUVER, BC

Project title/Titre du projet  
**DEEP BAY, B.C.**

**DEEP BAY HARBOUR  
ELECTRICAL SUPPLY**

Approved by/Approuve par

Designed by/Concept par  
T.D.

Drawn by/Dessine par  
H.W./P.P.

PWGSC Project Manager/Administrateur de Projets TP5GC  
D.B.

PWGSC, Architectural and Engineering Resources Manager/  
Ressources Architectural et de Directeur d'Ingénierie, TP5GC

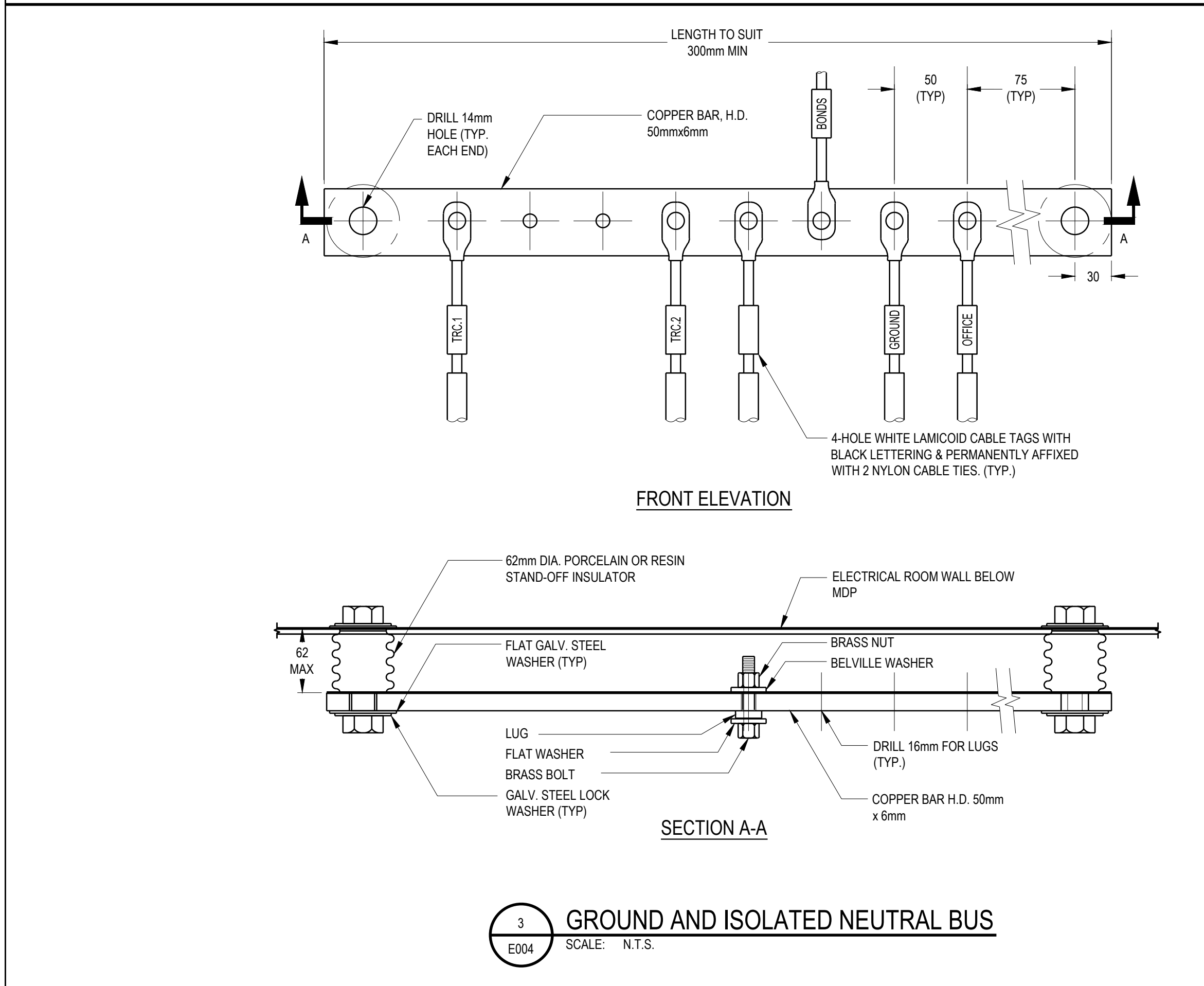
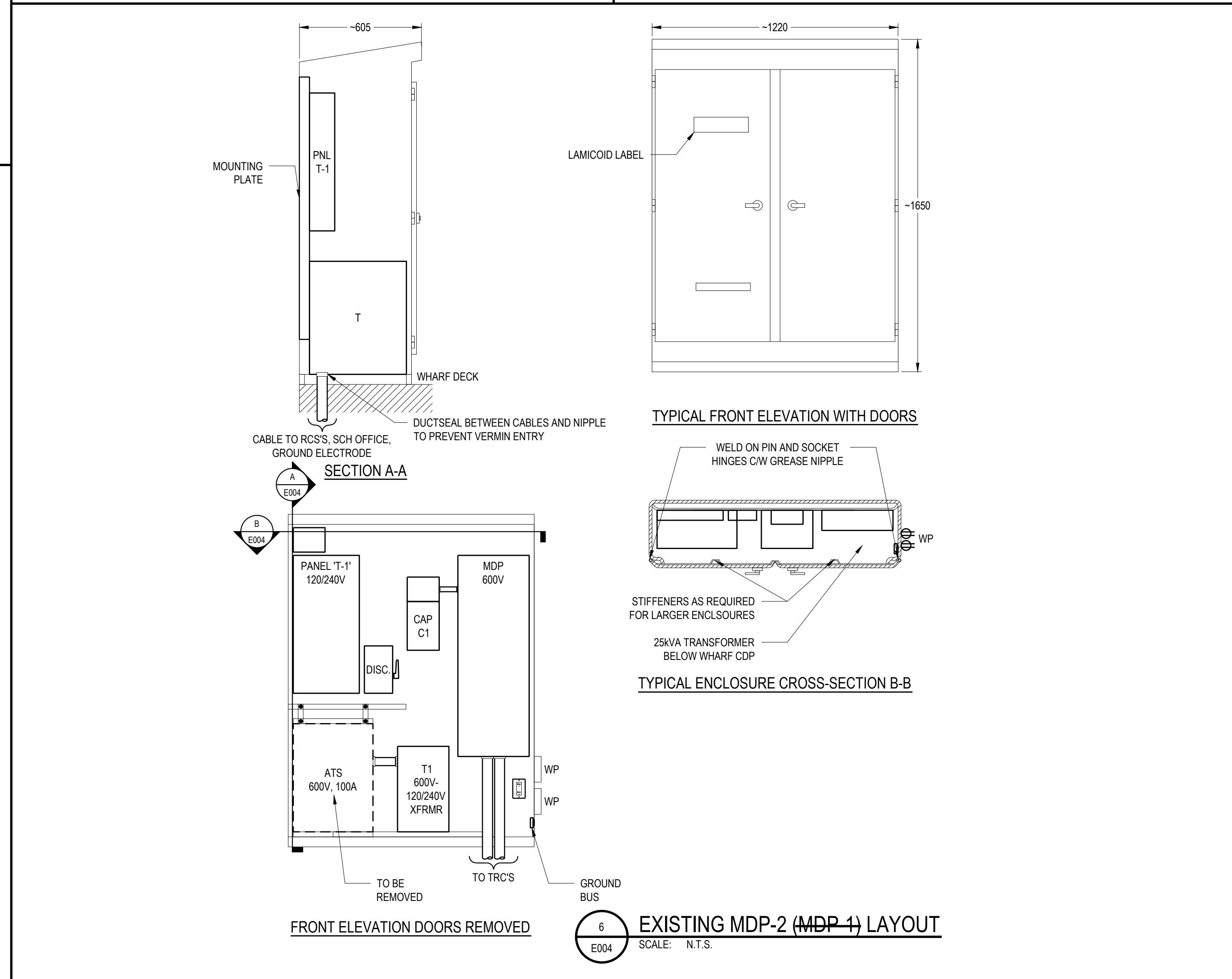
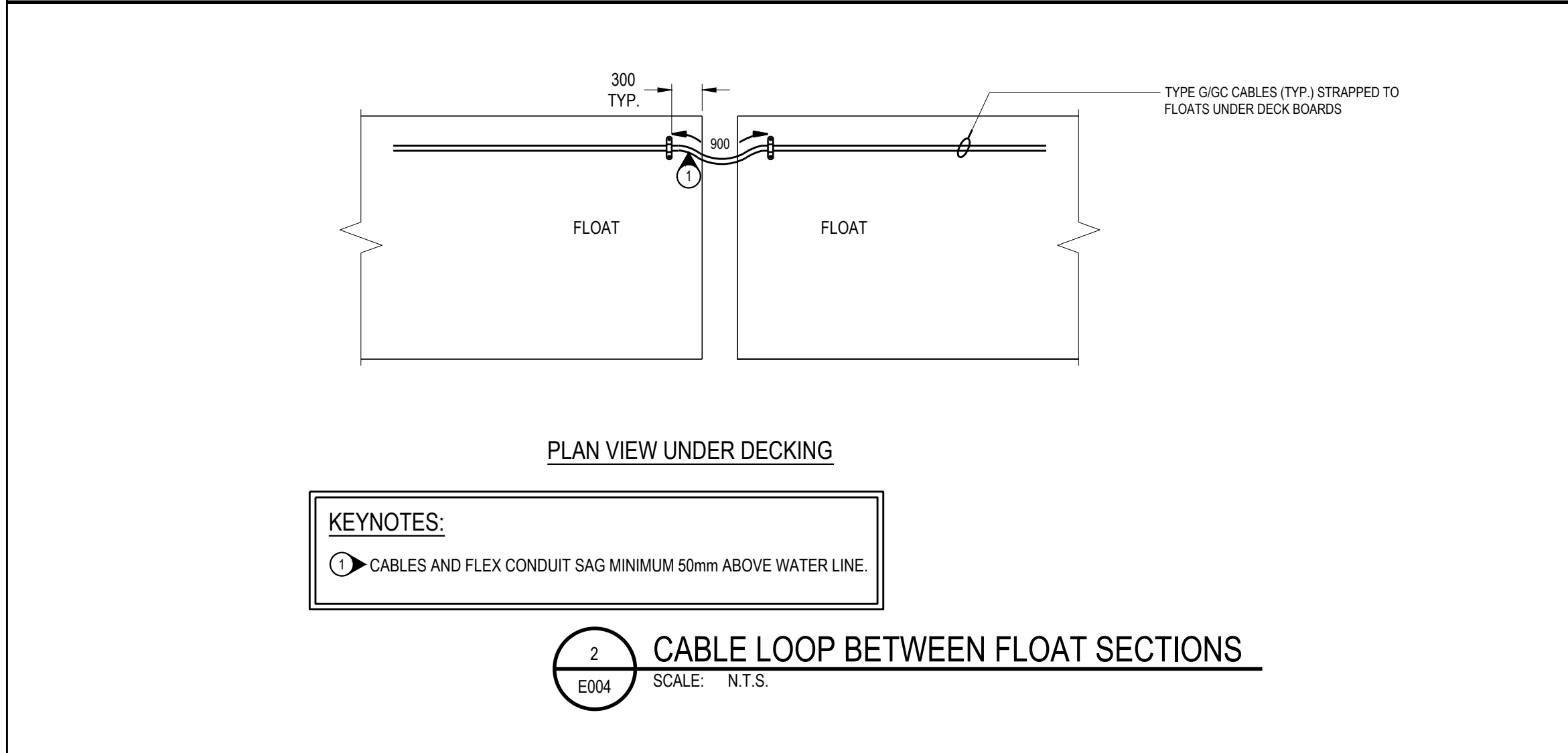
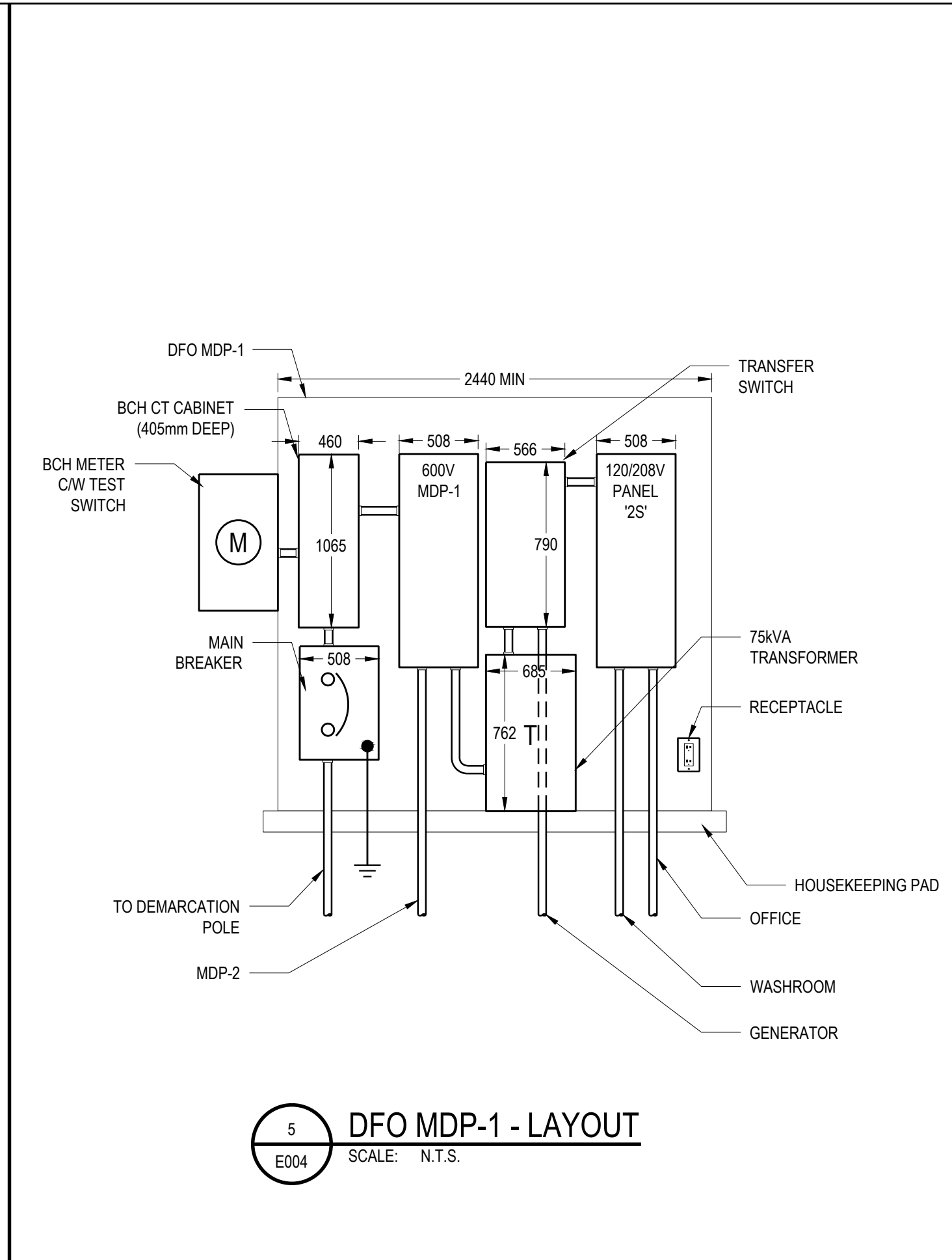
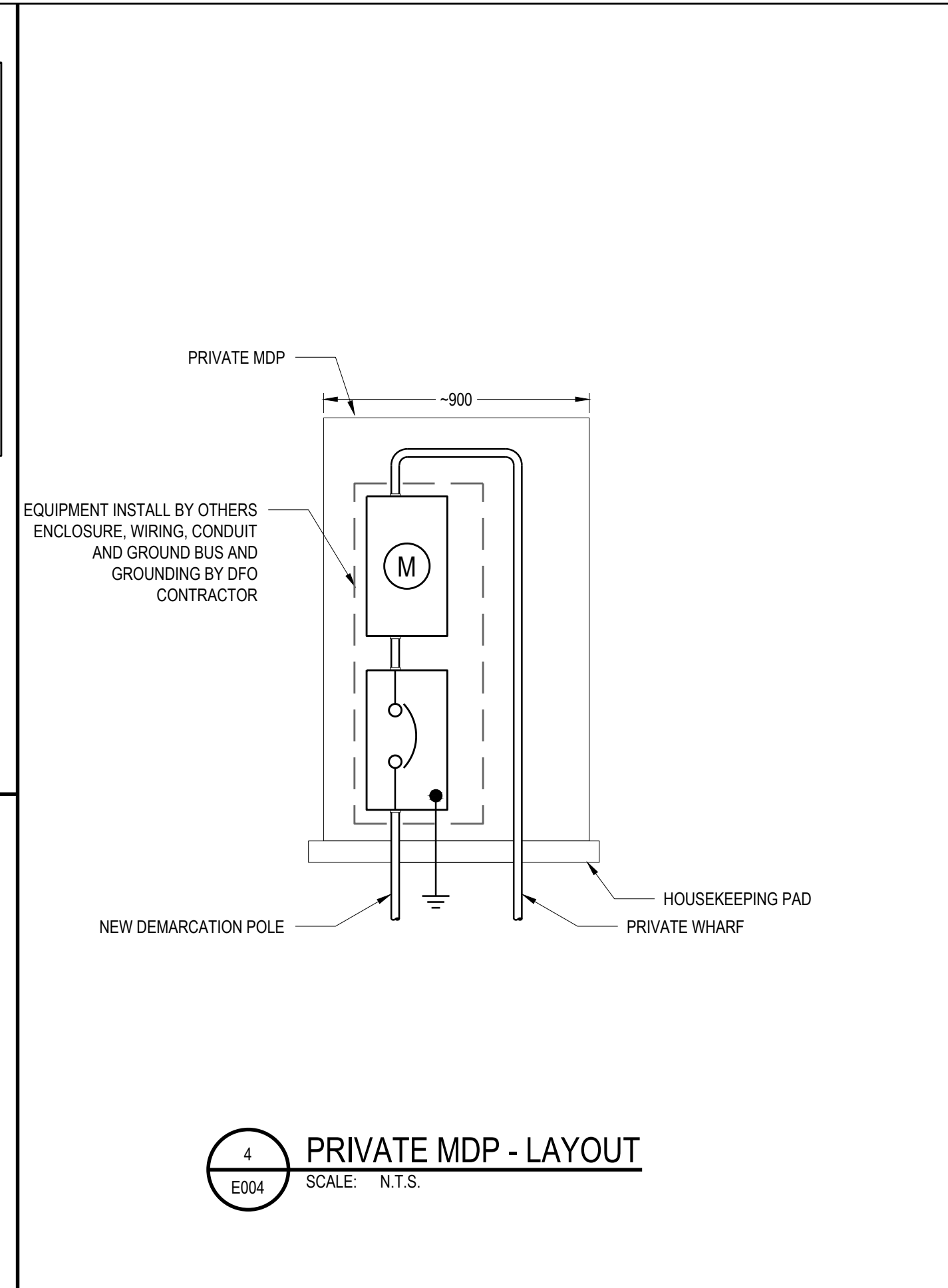
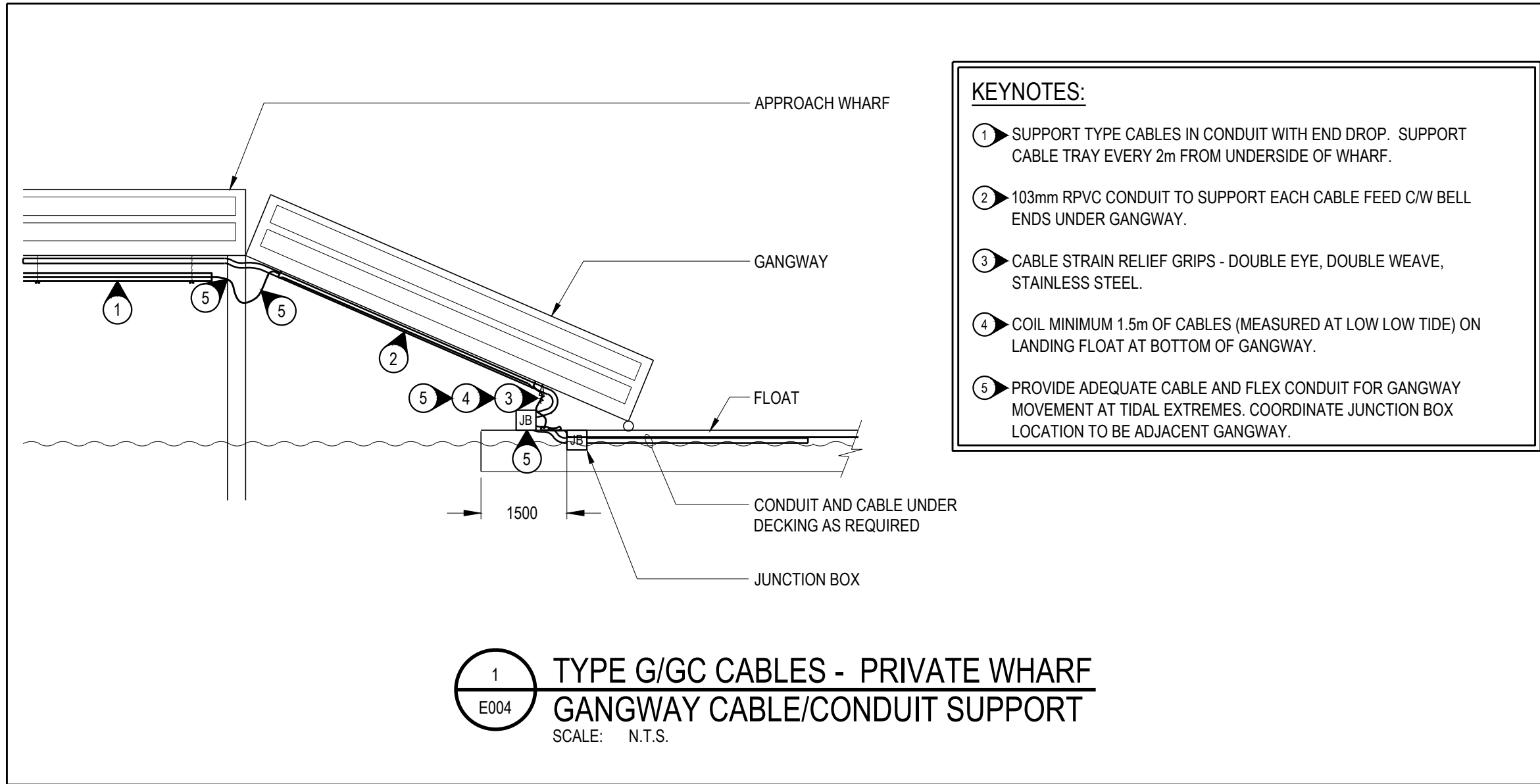
Client/client  
DFO - SCH

Drawing title/Titre du dessin

**SINGLE LINE DIAGRAM - NEW**

Project No./No. du projet <b>131-19108-24</b>	Sheet/Feuille <b>E003</b> 04 OF 08	Revision no./ La Révision no. <b>3</b>
--	--	--





**FISHERIES AND OCEANS CANADA**

REAL PROPERTY AND SAFETY AND SECURITY

**wsp**

301-3600 Uptown Blvd  
Victoria BC, Canada  
V8Z 0B9  
T: 1 250-384-5510  
F: 1 250-386-2844  
wsp.com

SITE KEY PLAN:

**DO NOT SCALE DRAWINGS**

Revision/Revision	Description/Description	Date/Date
5		
4		
3	RE-ISSUED FOR TENDER	18/07/11
2	ISSUED FOR TENDER	18/06/19
1	ISSUED FOR COORDINATION	18/06/12
0	ISSUED FOR REVIEW	18/04/25

Client/client

**FISHERIES AND OCEANS SMALL CRAFT HARBOURS**

401 BURNARD STREET, SUITE 200 VANCOUVER, BC

Project title/Titre du projet  
**DEEP BAY, B.C.**

**DEEP BAY HARBOUR ELECTRICAL SUPPLY**

Approved by/Approuvé par

Designed by/Concept par  
T.D.

Drawn by/Dessiné par  
H.W./P.P.

PWGSC Project Manager/Administrateur de Projets TP50C D.B.

PWGSC, Architectural and Engineering Resources Manager/Ressources Architectural et de Directeur d'Ingénierie, TP50C

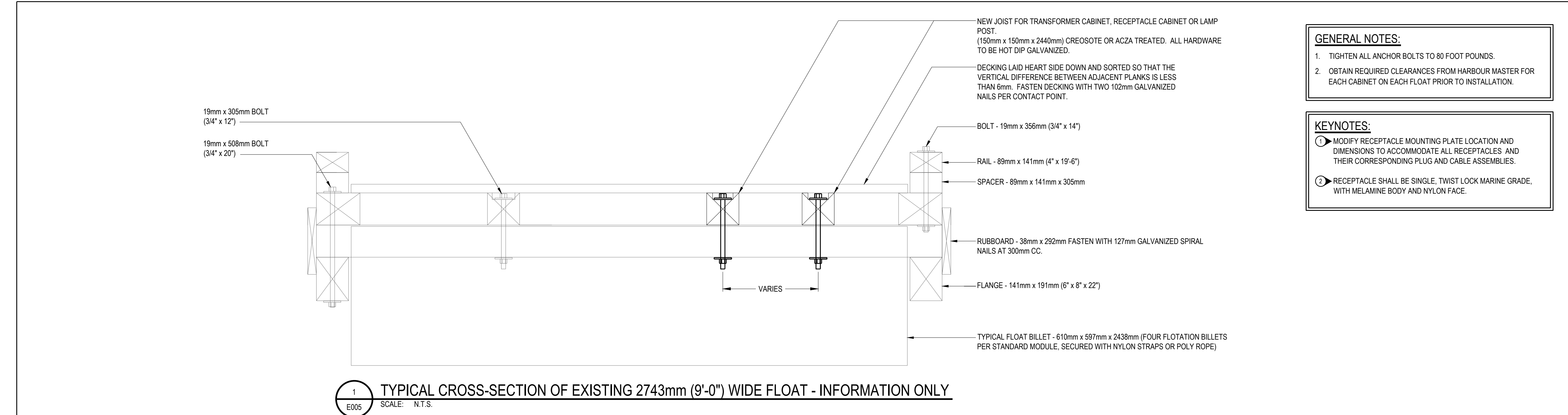
Client/client  
DFO - SCH

Drawing title/Titre du dessin

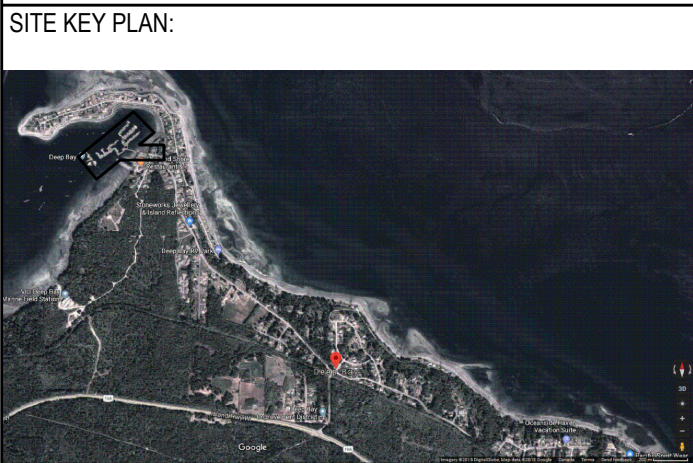
**ELECTRICAL DETAILS**

Project No./No. du projet	Sheet/Feuille	Revision no./La Révision no.
131-19108-24	E004 05 OF 08	3





- GENERAL NOTES:**
  - TIGHTEN ALL ANCHOR BOLTS TO 80 FOOT POUNDS.
  - OBTAIN REQUIRED CLEARANCES FROM HARBOUR MASTER FOR EACH CABINET ON EACH FLOAT PRIOR TO INSTALLATION.
- KEYNOTES:**
  - MODIFY RECEPTACLE MOUNTING PLATE LOCATION AND DIMENSIONS TO ACCOMMODATE ALL RECEPTACLES AND THEIR CORRESPONDING PLUG AND CABLE ASSEMBLIES.
  - RECEPTACLE SHALL BE SINGLE, TWIST LOCK MARINE GRADE, WITH MELAMINE BODY AND NYLON FACE.



DO NOT SCALE DRAWINGS		
5		
4		
3	RE-ISSUED FOR TENDER	18/07/11
2	ISSUED FOR TENDER	18/06/19
1	ISSUED FOR COORDINATION	18/06/12
0	ISSUED FOR REVIEW	18/04/25
Revision/Revision	Description/Description	Date/Date
Client/client		

**FISHERIES AND OCEANS  
SMALL CRAFT HARBOURS**

401 BURRARD STREET, SUITE 200  
VANCOUVER, BC

Project title/Titre du projet  
**DEEP BAY, B.C.**

**DEEP BAY HARBOUR  
ELECTRICAL SUPPLY**  
-

Approved by/Approuvé par

Designed by/Concepté par  
T.D.

Drawn by/Dessiné par  
H.W./P.P.

PWGSC Project Manager/Administrateur de Projets TP5GC  
D.B.

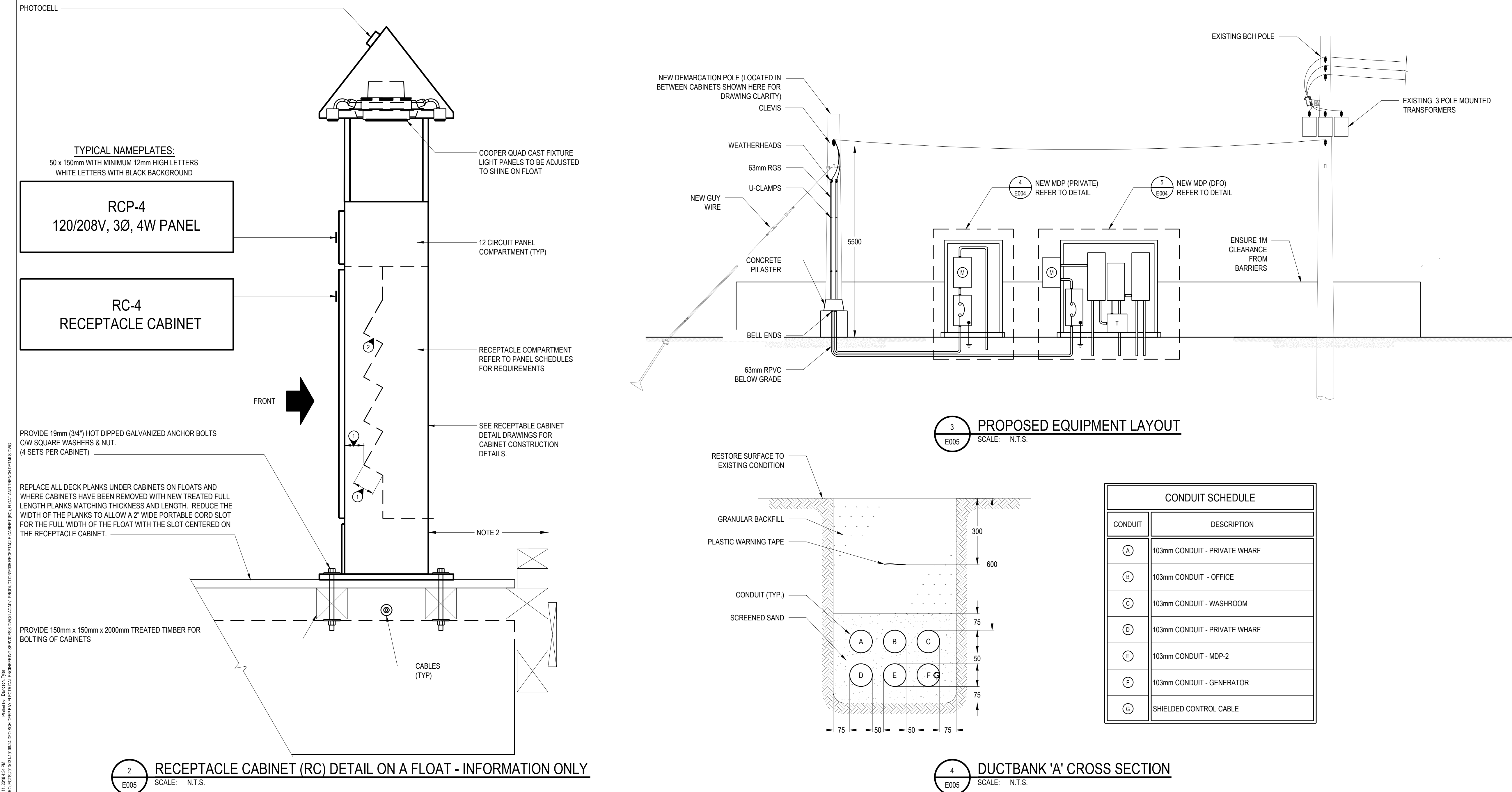
PWGSC, Architectural and Engineering Resources Manager/  
Ressources Architectural et de Directeur d'Ingénierie, TP5GC

Client/client  
DFO - SCH

Drawing title/Titre du dessin

**RECEPTACLE CABINET (RC),  
FLOAT AND TRENCH DETAILS**

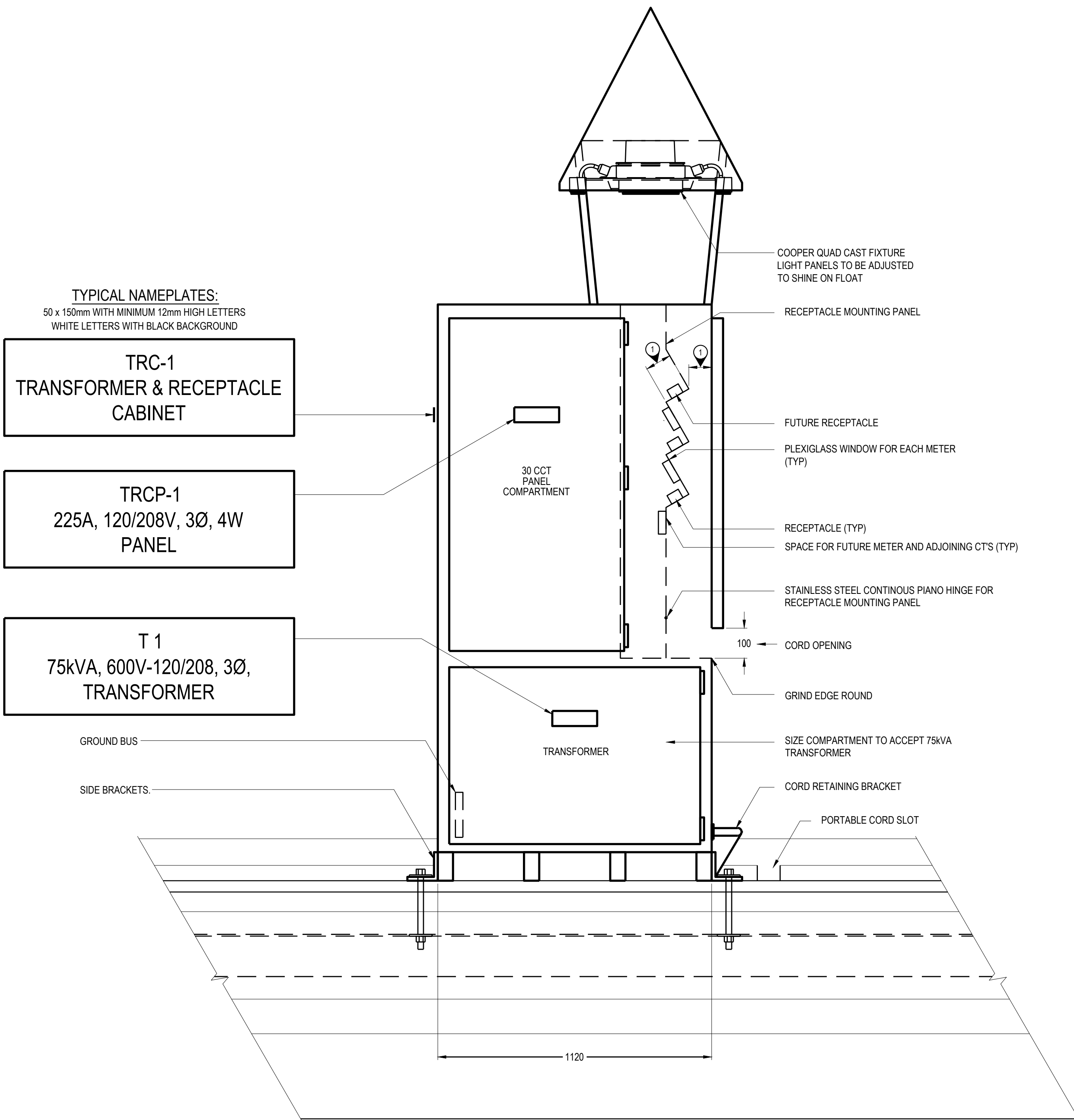
Project No./No. du projet <b>131-19108-24</b>	Sheet/Feuille <b>E005</b> 06 OF 08	Revision no./La Révision no. <b>3</b>
--	--	--



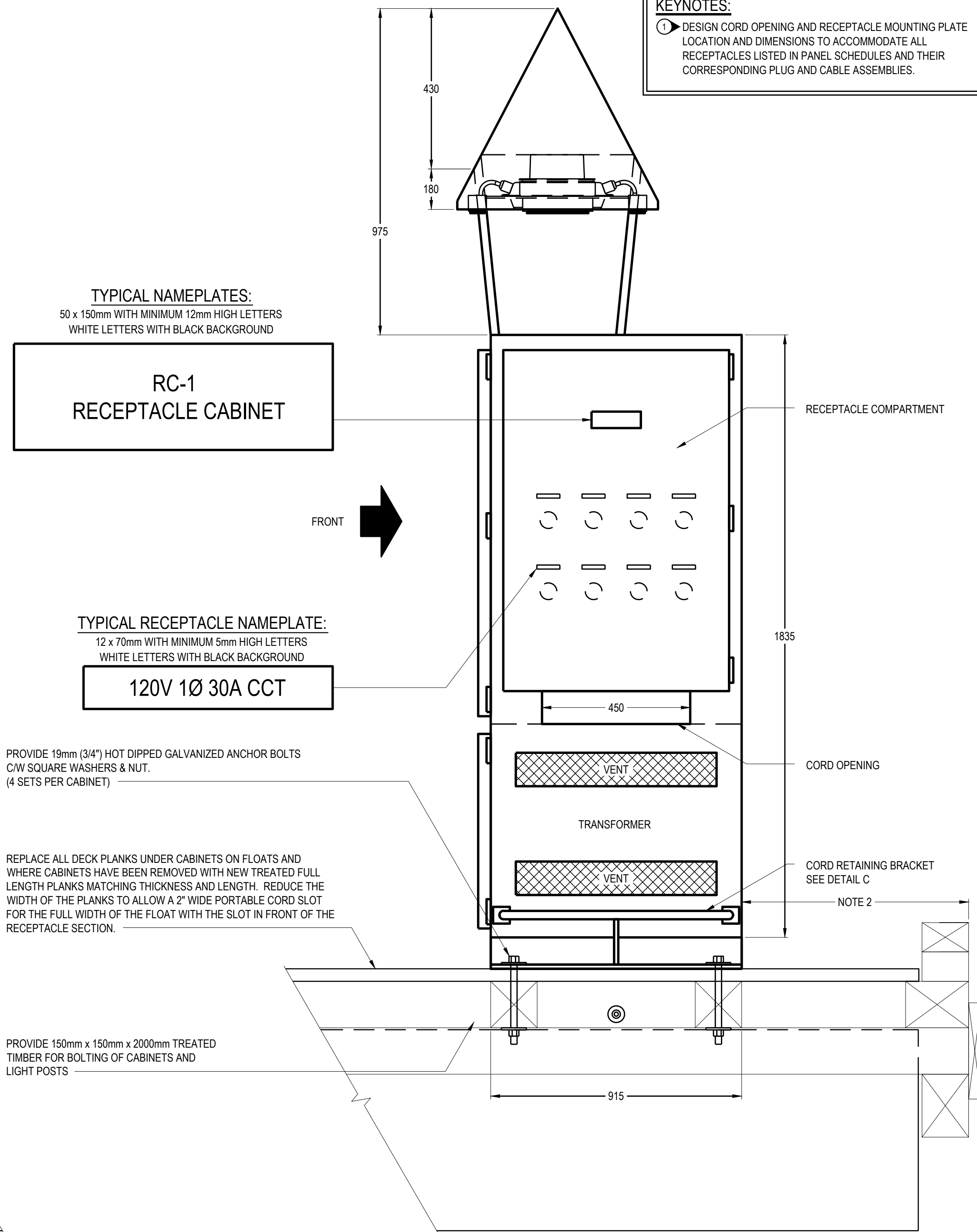
Prepared by: Davidson, Tyler  
File Name: V:\PROJECTS\2017\19108\24 DFO SCH DEEP BAY ELECTRICAL ENGINEERING SERVICES\DWG\AD01-PRODUCTION\RCR RECEPTACLE CABINET (RC), FLOAT AND TRENCH DETAILS.DWG  
Plot Date: JUN 11, 2018 11:43 AM



Proj Date: JUN 11, 2018 4:34 PM  
Proj Name: V:\PROJECTS\2018\19108-24 DFO DEEP BAY ELECTRICAL ENGINEERING SERVICES\DWG\AD01-PRODUCTION\001 TRANSFORMER RECEPTACLE CABINET (TRC) DETAILS.DWG  
Printed by: Davidson, Tyler



1  
E006  
DETAIL - TRANSFORMER AND RECEPTACLE CABINET (TRC) ON FLOAT - FRONT VIEW - INFORMATION ONLY  
SCALE: 1:10

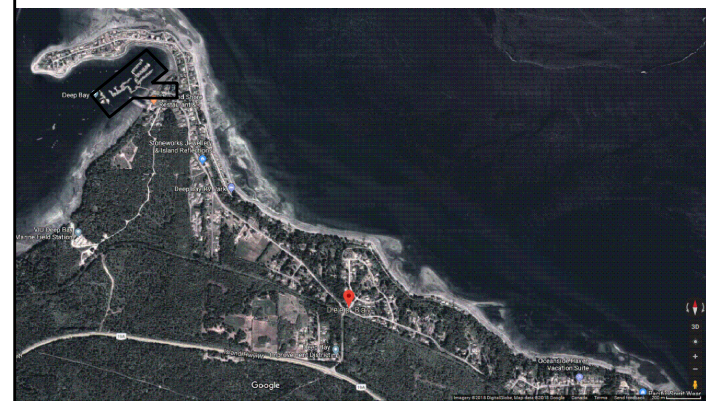


2  
E006  
DETAIL - TRC CABINET - SIDE VIEW - INFORMATION ONLY  
SCALE: 1:10

- GENERAL NOTES:**
1. TIGHTEN ALL ANCHOR BOLTS TO 80 FOOT POUNDS.
  2. OBTAIN REQUIRED CLEARANCES FROM HARBOUR MASTER FOR EACH CABINET ON EACH FLOAT PRIOR TO INSTALLATION.
- KEYNOTES:**
1. DESIGN CORD OPENING AND RECEPTACLE MOUNTING PLATE LOCATION AND DIMENSIONS TO ACCOMMODATE ALL RECEPTACLES LISTED IN PANEL SCHEDULES AND THEIR CORRESPONDING PLUG AND CABLE ASSEMBLIES.



SITE KEY PLAN:



**DO NOT SCALE DRAWINGS**

5		
4		
3	RE-ISSUED FOR TENDER	18/07/11
2	ISSUED FOR TENDER	18/06/19
1	ISSUED FOR COORDINATION	18/06/12
0	ISSUED FOR REVIEW	18/04/25

Revision/ Revision	Description/Description	Date/Date
Client/client		

**FISHERIES AND OCEANS  
SMALL CRAFT HARBOURS**

401 BARRARD STREET, SUITE 200  
VANCOUVER, BC

Project title/Titre du projet  
**DEEP BAY, B.C.**

**DEEP BAY HARBOUR  
ELECTRICAL SUPPLY**

Approved by/Approuvé par

Designed by/Concept par  
T.D.

Drawn by/Dessiné par  
H.W./P.P.

PWGSC Project Manager/Administrateur de Projets TP50C  
D.B.

PWGSC, Architectural and Engineering Resources Manager/  
Ressources Architectural et de Directeur d'Ingénierie, TP50C

Client/client

DFO - SCH

Drawing title/Titre du dessin

**TRANSFORMER RECEPTACLE  
CABINET (TRC) DETAILS**

Project No./No. du  
projet  
**131-19108-24**

Sheet/Feuille  
**E006**  
07 OF 08

Revision no./  
La Révision  
no.  
**3**



Rated Voltage:	- 208V 3 phase
Locations:	- Receptacle Cabinets on floats, in TRC's or RC's.
Mounting:	- surface (inside top RC)
Circuits:	- 12
Bus Size:	- 100A
Fault Current Rating:	- 22kA Bus 10KA Breakers

description	bkr	cct		cct	bkr	description
L5-20R receptacle	20	1		2	30	L5-30R receptacle
L5-20R receptacle	20	3		4	30	L5-30R receptacle
L5-20R receptacle	20	5		6	15	RC Light
L5-20R receptacle	20	7		8	20	SPARE
L5-20R receptacle	20	9		10	20	SPARE
L5-20R receptacle	20	11		12		SPACE

Rated Voltage:	- 208V 3 phase
Location:	- mounted inside TRC enclosure
Mounting:	- surface (inside top of TRC)
Circuits:	- '18
Bus Size:	- 400A
Fault Current Rating:	- 22kA Bus 10KA Breakers

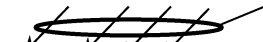
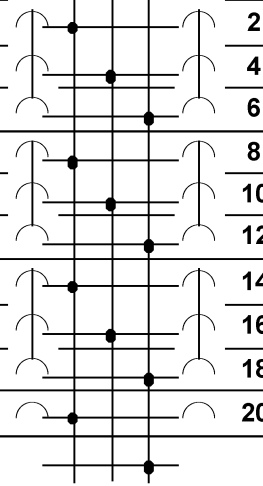
from TRC transformer

description	bkr	cct		cct	bkr	description
L5-20R receptacle	20	1		2	30	L5-30R receptacle
L5-20R receptacle	20	3		4	30	L5-30R receptacle
L5-20R receptacle	20	5		6	15	RC light
L5-20R receptacle	20	7		8		
L5-20R receptacle	20	9		10	70	RC1-2 (46A)
L5-20R receptacle	20	11		12		
		13		14		
RC1-1 (46A)	70	15		16	70	RC1-3 (46A)
		17		18		

Rated Voltage:	- 208V 3 phase
Location:	- mounted inside enclosure
Mounting:	- surface (inside top of TRC)
Circuits:	- 30
Bus Size:	- 225A
Fault Current Rating:	- 22kA Bus 10KA Breakers

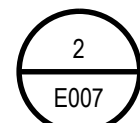
description	bkr	cct			cct	bkr	description
WASHROOM [60A]	100	1			2	125	OFFICE [125A]
		3			4		
		5			6		
SPACE		7			8		SPACE
		9			10		
		11			12		
APPROACH LIGHTS	20	13			14	20	Block heater
PARKING LIGHTS	20	15			16	20	Battery Charger
spare	15	17			18	20	Receptacle
spare	15	19			20	15	spare
spare	15	21			22	15	spare
spare	15	23		etc	24	15	spare

Rated Voltage: - 347/600V 3 phase  
Location: - wharf  
Mounting: - surface (inside top of mdp enclosure)  
Circuits: - 24  
Bus Size: - 400A  
Fault Current Rating: - 22kA Bus 10KA Breakers

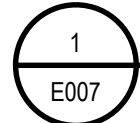
								
description	bkr	cct		cct	bkr	description		
MDP-1[150A]	150	1		2	90	T-GEN[90A]		
		3		4				
		5		6				
		7		8				
		9		10				
		11		12				
		13		14				
		15		16				
		17		18				
		19		20				
			etc					

MDP Factored Load Calculations: 3ph 600V EXISTING SUPPLY, EXISTING LOAD							
Load at Service Entrance							
Receptacle count	rec'pt	qty	amps	vols	ph	kW	Total kW
1st 4 highest rated		0	50	208	1	0.00	1.00
		4	30	120	1	14.4	1.00
							14.4
Next 4 highest rated		4	30	120	1	14.4	0.65
							9.4
Next 5 highest rated		5	30	120	1	18.0	0.50
		13	30	120	1	46.8	0.25
Next 16 highest rated		3	20	120	1	7.2	0.25
Next 20 highest rated		20	20	120	1	48.0	0.20
Next 20 highest rated		20	20	120	1	48.0	0.15
Remaining receptacles		37	20	120	1	88.8	0.10
<b>Total plug/receptacles</b>		<b>106</b>					<b>71.9</b>
Cabinet Lighting Fixture	70W	10			0.7	1.00	7.0
Dock Approach Fixtures	70W	7			0.5	1.00	3.4
Winch motor (7.5hp, 575v, 7.2A)		1			5.6	1.00	5.6
Washroom / Office load (est.)							
building	50W/m <sup>2</sup>	144	m <sup>2</sup>			1.00	7.2
water heater		1			1.9	1.00	1.9
elec heat		2			1.3	0.75	1.9
<b>Estimated MDP load</b>							<b>98.9</b>
<b>Load at Service Entrance</b>		<b>600</b>	<b>volts</b>	<b>3</b>	<b>ph</b>	<b>95</b>	<b>amps</b>

TRC-1 Factored Load: 600V 3 phase								
Load at each TRC ( supplies 4 RC's)								
receptacle count	rec/pt	qty	amps	volts	ph	kW	mult	Total (kW)
1st 4 highest rated	L5-50R	0	50	208	1	0.0	1.00	0.0
	L5-30R	4	30	120	1	14.4	1.00	14.4
next 4 highest rated	L5-30R	4	30	120	1	14.4	0.65	9.4
next 5 highest rated	L5-20R	5	20	120	1	12.0	0.50	6.0
next 16 highest rated	L5-20R	20	20	120	1	48.0	0.25	12.0
next 20 highest rated	L5-20R	1	30	120	1	3.6	0.20	0.7
<b>Total plug/receptacles</b>		<b>34</b>						<b>42.5</b>
Float Lighting Fixture	70W	0				0.1	1.00	0.0
Cabinet Lighting Fixture	70W	4				0.3	1.00	0.3
<b>Estimated TRC Load (kW)</b>								<b>42.8</b>
<b>Feeder ampacity:</b>								
from MDP to TRC's	volts	ph	amps					
	<b>600</b>	<b>3</b>	<b>41</b>					



SCALE: N.T.S.



## SCALE: N.T.S.

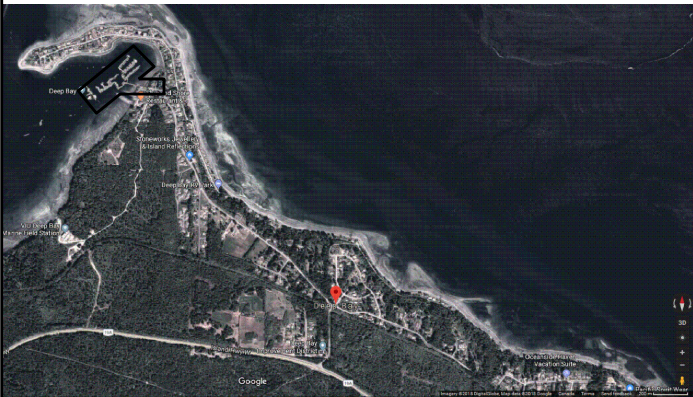


FISHERIES AND OCEANS  
CANADA



301-3600 Uptown Blvd  
Victoria BC, Canada  
V8Z 0B9  
T+ 1 250-384-5510  
F+ 1 250-386-2844  
wsp.com

SITE KEY PLAN:



**DO NOT SCALE DRAWINGS**

5		
4		
3	RE-ISSUED FOR TENDER	18/07/11
2	ISSUED FOR TENDER	18/06/19
1	ISSUED FOR COORDINATION	18/06/12
0	ISSUED FOR REVIEW	18/04/25

Revision/ Revision	Description/Description	Date/Date
Client/client		

**FISHERIES AND OCEANS  
SMALL CRAFT HARBOURS**

401 BURNARD STREET, SUITE 200  
VANCOUVER, BC

Project title/Titre du projet  
DEEP BAY, B.C.

## DEEP BAY HARBOUR ELECTRICAL SUPPLY

Approved by/Approuve par	
--------------------------	--

Designed by/Concept par T.D.
---------------------------------

Drawn by/Dessine par  
H.W./P.P.

PWGSC Project Manager/Administrateur de Projets TPSGC  
D.B.

PWGSC, Architectural and Engineering Resources Manager/  
Ressources Architectural et de Directeur d'ingénierie, TPSGC

Client/client
---------------

Drawing title/Titre du dessin
-------------------------------

## ELECTRICAL SCHEDULES AND LOAD CALCULATIONS

Project No./No. du  
projet

131-19108-24

Sheet/Feuille  
**E007**  
08 OF 08

Revision no./  
La Révision  
no.