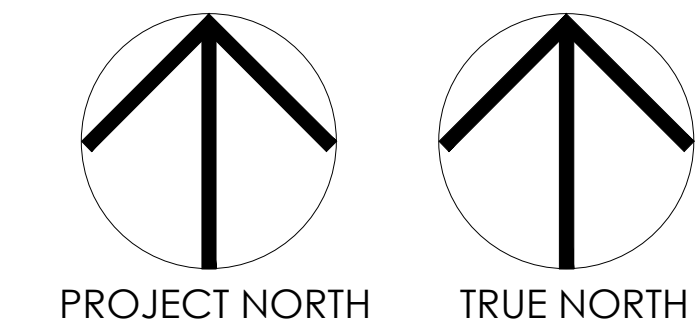


GENERAL NOTES
This drawing and all its contents are protected by copyright, and shall not be reproduced, in whole or in part without the expressed written consent of Casola Koppe Architects Ltd. These drawings are not to be scaled. All dimensions are to face of stud or sheathing unless noted otherwise. Contractor must verify all dimensions, drawings, details and specifications. Any discrepancies are to be reported to Casola Koppe Architects Ltd. prior to proceeding with work; this includes any errors or omissions.

ARCHITECT
casola-koppe
ARCHITECTS
#300 - 1410 1st street sw, calgary, alberta T2R 0V8
bus (403) 287-9960 fax (403) 287-9962 info@ckarch.ca



5		
4		
3		
2		
1	ADDENDUM #4	2018/08/30
0	ISSUED FOR TENDER	2018/05/25

Revision	Description	Date
Client		client

**CORRECTIONAL SERVICES
CANADA**

Project

**CHURCHILL UNIT
REDEVELOPMENT**

Designed by
PM

Drawn by
MW, RH

Approved by

PWGSC Project Manager
EH

Drawing title

**CHURCHILL UNIT
LARGE SCALE PLANS
AND ELEVATIONS**

Project no./No. du projet

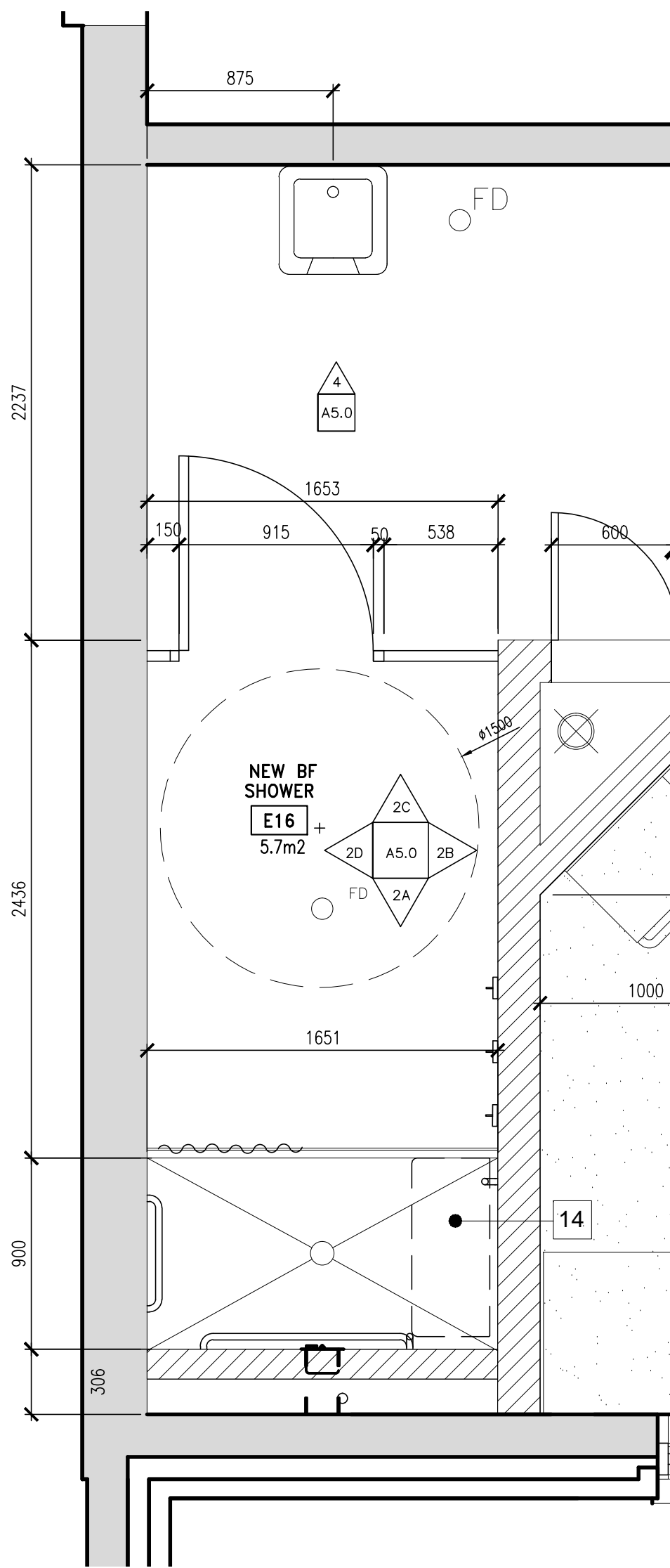
R.082215.001

Drawing no./No. du dessin

A5.0

Revision no.

1

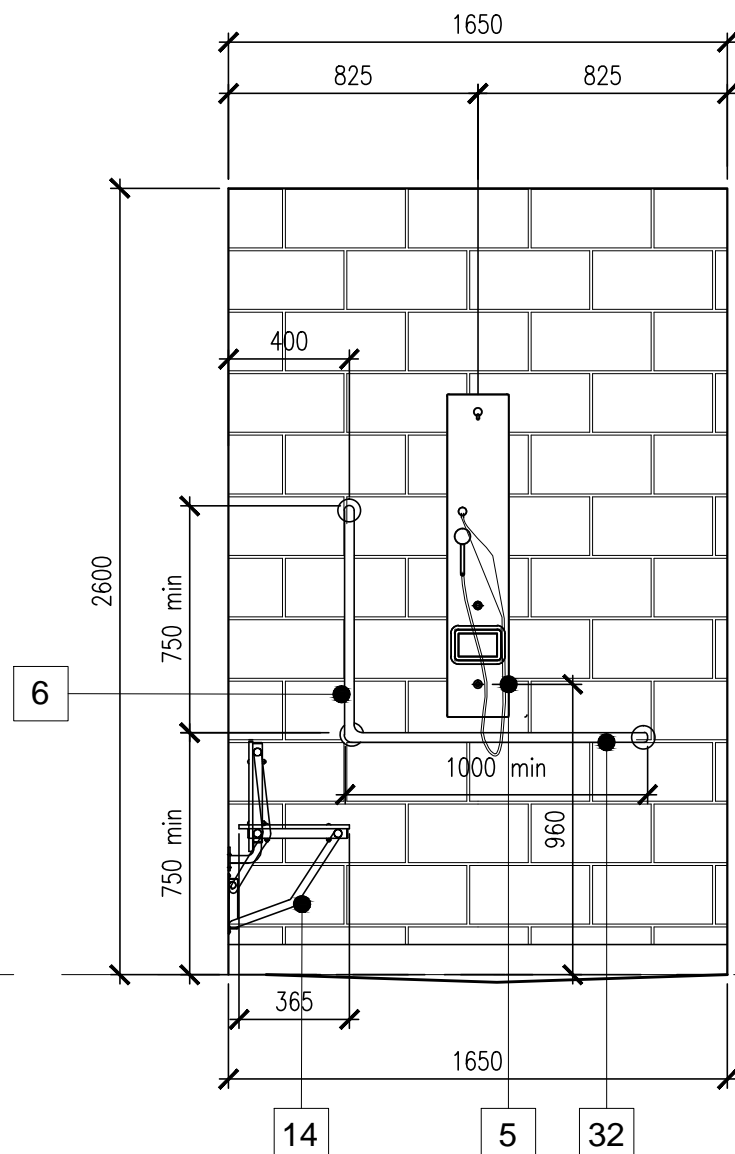


NEW BARRIER FREE SHOWER

1 : 25

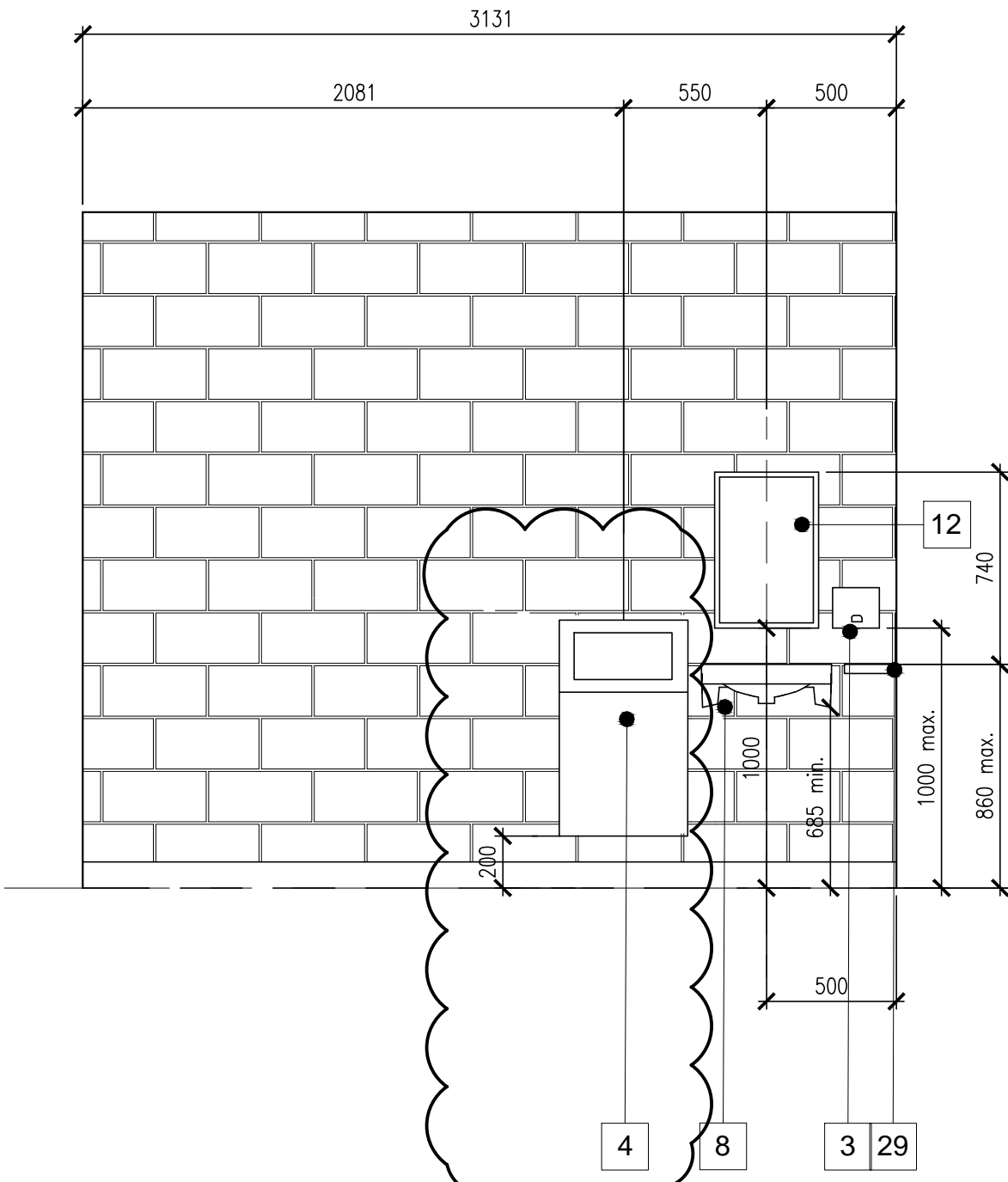
INTERIOR ELEVATIONS LEGEND:

- 1 DOUBLE ROLL SURFACE MOUNTED TOILET TISSUE DISPENSER - MOUNTED 600mm FROM FLOOR TO C.L.
- 2 PAPER TOWEL DISPENSER - SURFACE MOUNTED, 1000mm FROM FLOOR TO UNDERSIDE, UNLESS OTHERWISE NOTED
- 3 SOAP DISPENSER - SURFACE MOUNTED, 1000mm FROM FLOOR TO UNDERSIDE
- 4 SURFACE MOUNTED PLASTIC GARBAGE CAN.
- 5 SHOWER CONTROL UNIT - SURFACE MOUNTED
- 6 VERTICAL GRAB BAR - SHOWER
- 7 HORIZONTAL GRAB BAR - SHOWER
- 8 STAINLESS STEEL, SEAMLESS LAVATORY, 860mm MAX. FROM FLOOR TO TOP OF LAVATORY
- 9 STAINLESS STEEL, SEAMLESS TOILET, 460mm MAX. FROM FLOOR TO TOP OF TOILET
- 10 STAINLESS STEEL, SEAMLESS LAV/TOILET COMBO, 850mm MAX. FROM FLOOR TO TOP OF LAVATORY.
- 11 SAFETY TOWEL/ROBE HOOK - 1200mm FROM FLOOR TO C.L.
- 12 SAFETY MIRROR - BARRIER FREE - 1000mm FROM FLOOR TO UNDERSIDE. TYPICAL - 1450mm FROM FLOOR TO UNDERSIDE.
- 13 SHOWER CURTAIN AND COLLAPSIBLE ROD 1800mm FROM FLOOR TO C.L. OF ROD
- 14 FOLD-DOWN SHOWER SEAT 430mm FROM FLOOR TO BOTTOM OF BENCH
- 15 BED - PLASTIC - REFER TO SPECIFICATIONS
- 16 LOCKER
- 17 SHELF - METAL & SECURED/ANCHORED.
- 18 RUBBER COVE BASE
- 19 PAINTING OVER CONCRETE, GLOSS ENAMEL 100mm (4")
- 20 CELL - PAINTED GLOSS ENAMEL COVE BASE
- 21 TELEPHONE JACK
- 22 WHITEBOARDS
- 23 STAINLESS STEEL, SEAMLESS SINK
- 24 STORAGE UNIT
- 25 EXISTING INTERIOR WINDOW, TO BE RE-PAINTED
- 26 POLYCOM HARDENED WALL UNIT.(N.I.C.) PROVIDE BACKING AS REQUIRED
- 27 BARRIER FREE WASHROOM SIGNAGE
- 28 BARRIER FREE PUSH BUTTON POWER ASSISTED DOOR OPENER
- 29 STAINLESS STEEL SHELF 400 LONG X 200 WIDE
- 30 MILLWORK CABINETS. REFER TO DWG. A5.1
- 31 EXISTING WINDOW TO BE REGLAZED AND REPAINTED
- 32 BARRIER FREE GRAB BAR
- 33 CALL BATTION. RECESSED IN BLOCK WALL
- 34 6mm LEXAN SPIT SHIELD WITH STAINLESS STEEL FRAME SCREWED TO GATE WITH SECURITY SCREWS
- 35 CABINET ON ROLLERS



**ELEVATION A
NEW BARRIER FREE SHOWER**

1 : 25



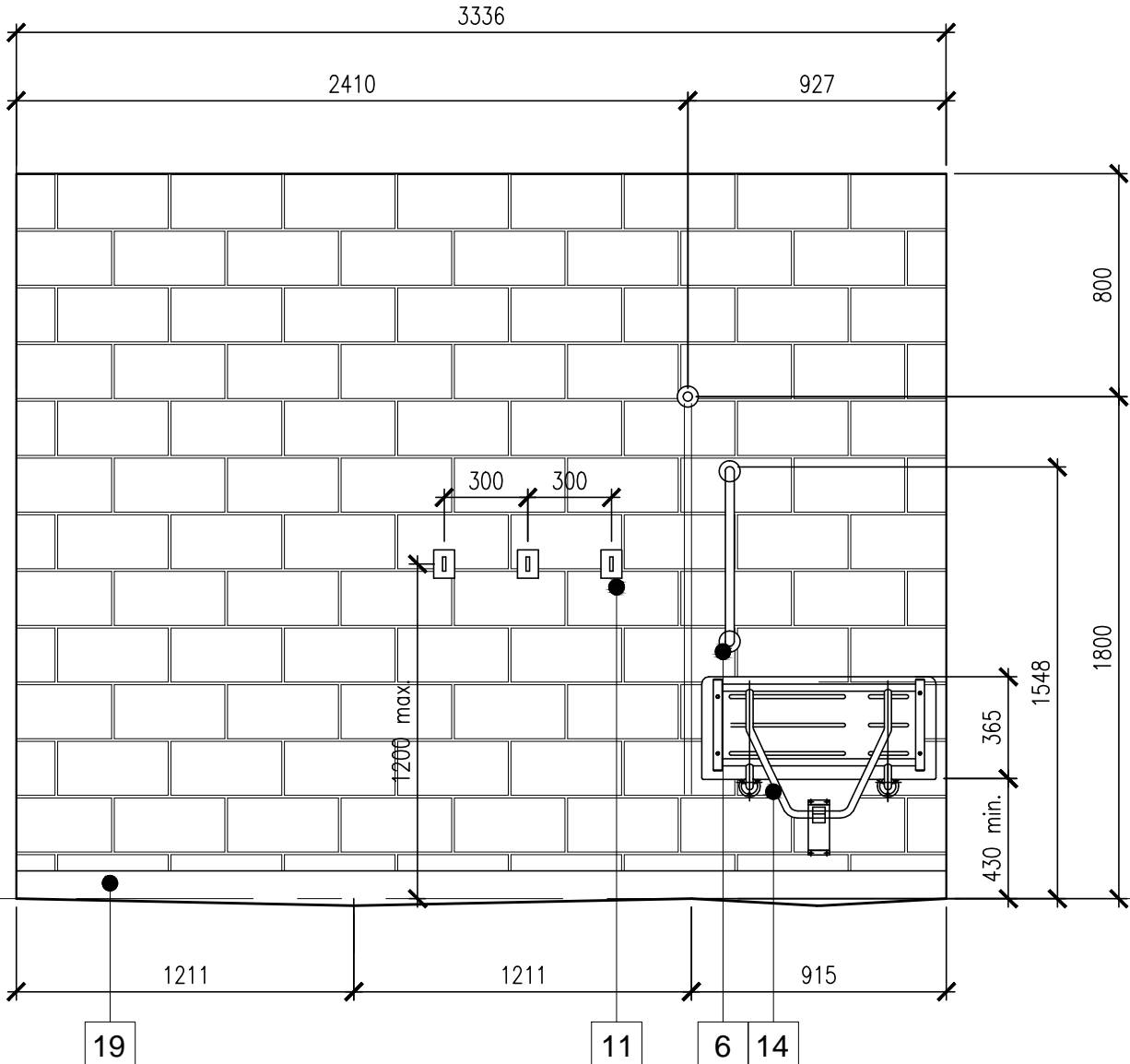
**ELEVATION A
NEW BARRIER FREE WASHROOM**

1 : 25

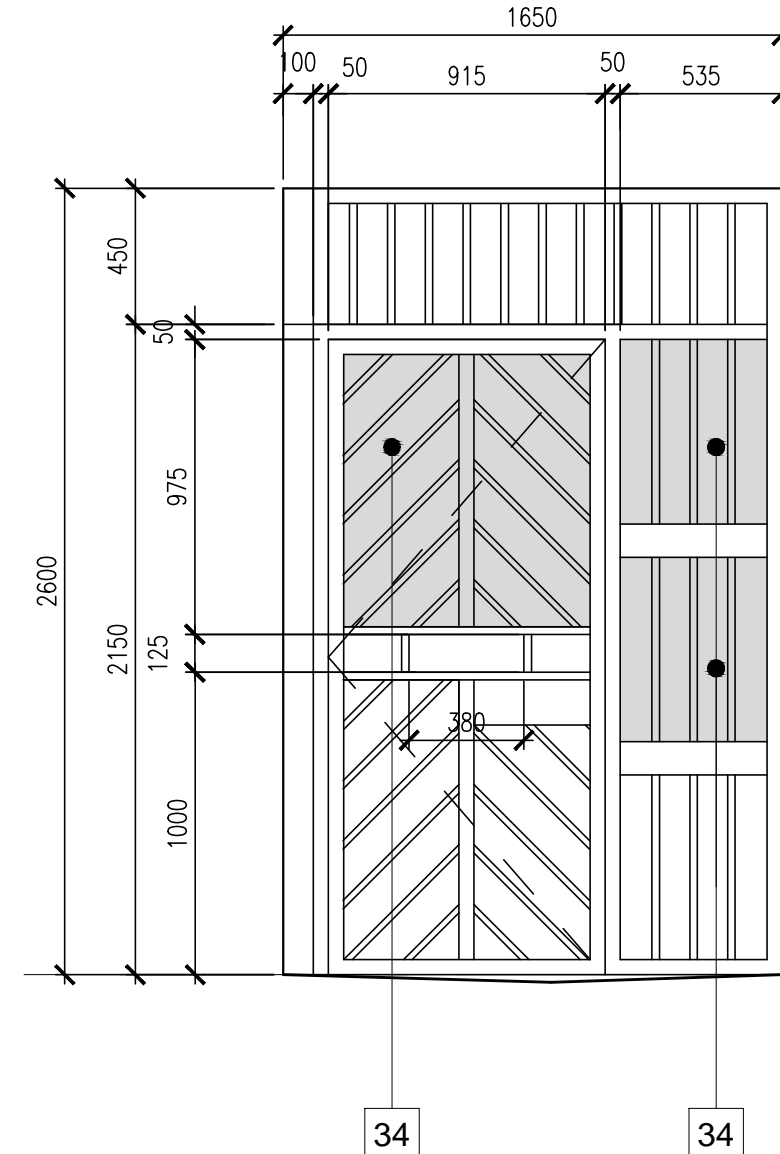
WASHROOM ACCESSIBLE DESIGN REQ.:

ALL ACCESSORIES BY SUPPLIER TO ADHERE TO THE FOLLOWING AS PER CSA Standards B-651-12;

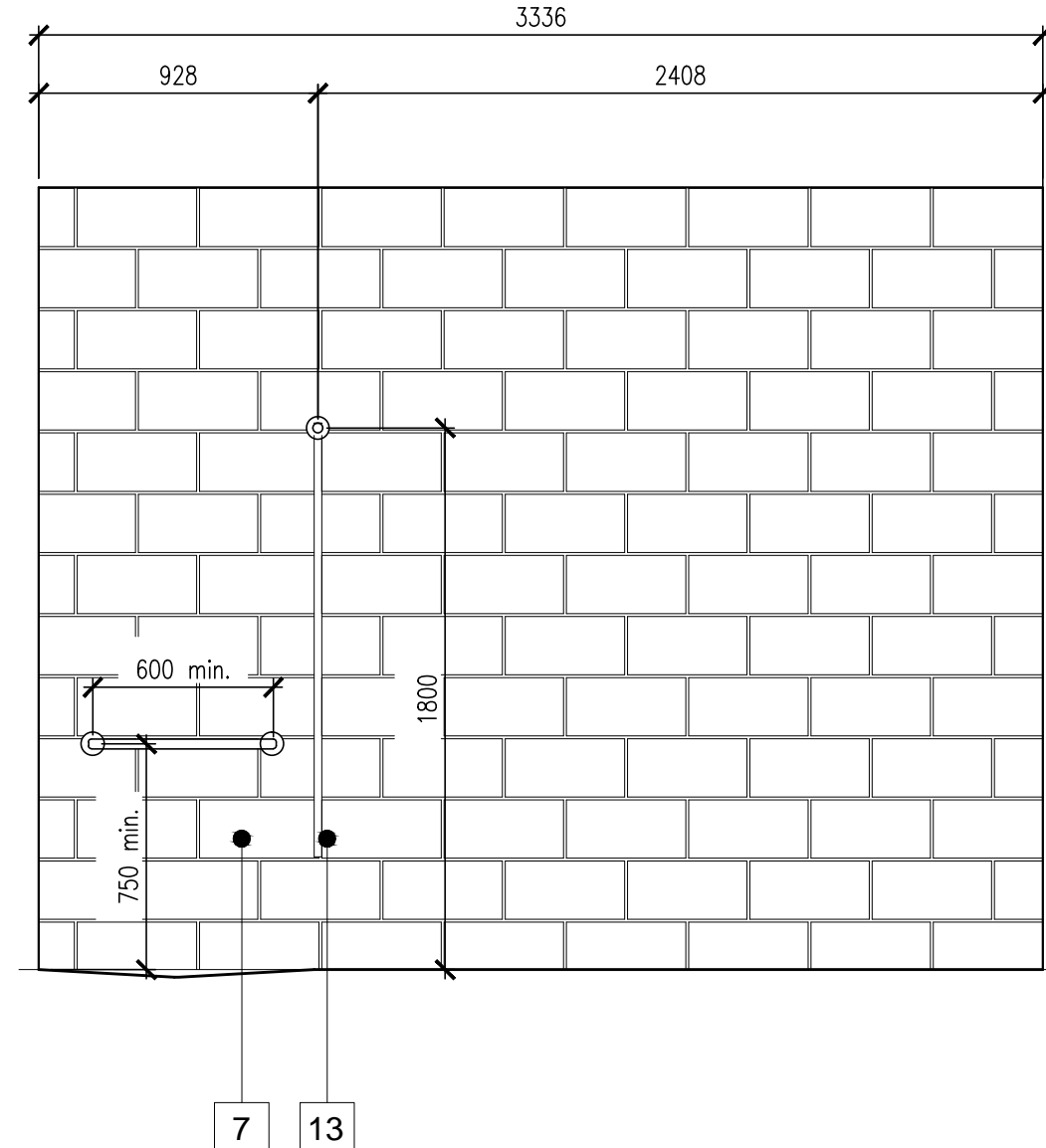
1. SHALL HAVE NO DIMENSION LESS THAN 1700MM
2. SHALL HAVE A TURNING DIAMETER NOT LESS THAN 1500.
3. DESIGNED TO PERMIT A PERSON USING A WHEELCHAIR TO BACK IN ALONG SIDE THE WATERCLOSET.
4. MINIMUM DOOR WIDTH - 900MM
5. DOOR CAPABLE OF BEING LOCKED FROM THE INSIDE, BUT RELEASED FROM THE OUTSIDE
6. DOOR TO HAVE: OPERATING MECHANISMS LOCATED NOT LESS THAN 900MM AND NOT MORE THAN 1000MM AFF.
7. IF AN OUTWARD SWINGING DOOR, A DOOR PULL NOT LESS THAN 140MM LONG LOCATED ON THE INSIDE SO THAT ITS MIDPOINT IS NOT LESS THAN 200mm AND NOT MORE THAN 300mm FROM THE SIDE, AND NOT LESS THAN 900mm AND NOT MORE THAN 1000mm ABOVE FLOOR.
8. LAVATORY (SINK):
 - CENTERLINE = 460 mm FROM WALL
 - CLEARANCE UNDERNEATH = 760WIDE, 735 HIGH@FRONT, 685 HIGH @ A POINT 205 BACK FROM FRONT, 230 HIGH OVER A DISTANCE FROM A POINT 280-430 BACK FROM FRONT
 - EXPOSED PARTS TO BE INSULATED IF PRESENT A BURN HAZARD.
 - FACET HANDLES TO BE LEVER TYPE WITHOUT SPRINGLOADING
 - SOAP AND TOWEL DISPENSERS NOT TO BE MORE THAN 1200 ABOVE FLOOR
9. MIRROR:
 - BOTTOM EDGE IS NOT MORE THAN 1000 AFF
 - INCLINED TO THE VERTICAL TO A PERSON IN A WHEELCHAIR
10. WATER CLOSETS (TOILET): BARRIER FREE
 - SEAT LOCATED NOT LESS THAN 430 AND NOT MORE THAN 485mm AFF.
 - HAND OPERATED FLUSHING CONTROLS THAT ARE EASILY ACCESSIBLE TO WHEELCHAIR USER
 - EQUIPPED WITH A SEAT LID OR OTHER BACK SUPPORT
11. GRAB BARS: LOCATED HORIZONTAL BESIDE THE WATERCLOSET, 1200mm LONG, POSITION BETWEEN 300 & 330 ABOVE TOILET SEAT, MIDPOINT @ FRONT EDGE OF THE TOILET
 - LOAD = 1.3kN
 - DIAMETER BETWEEN 30 & 40 mm
 - CLEARANCE FROM WALL BETWEEN 35 & 45 mm



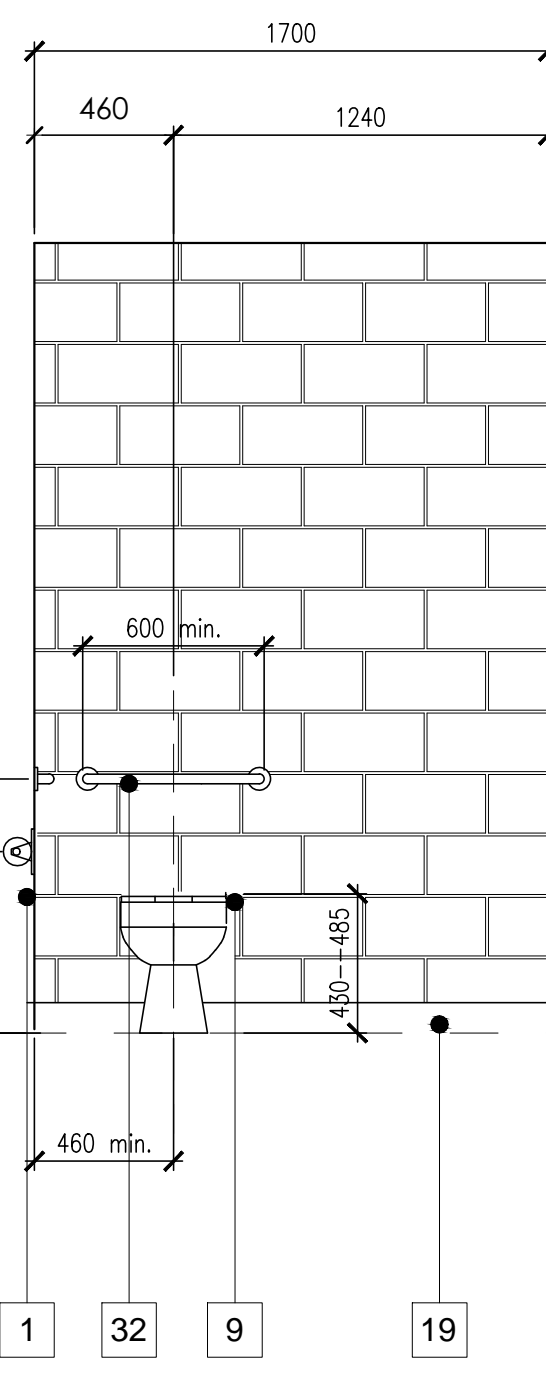
ELEVATION B



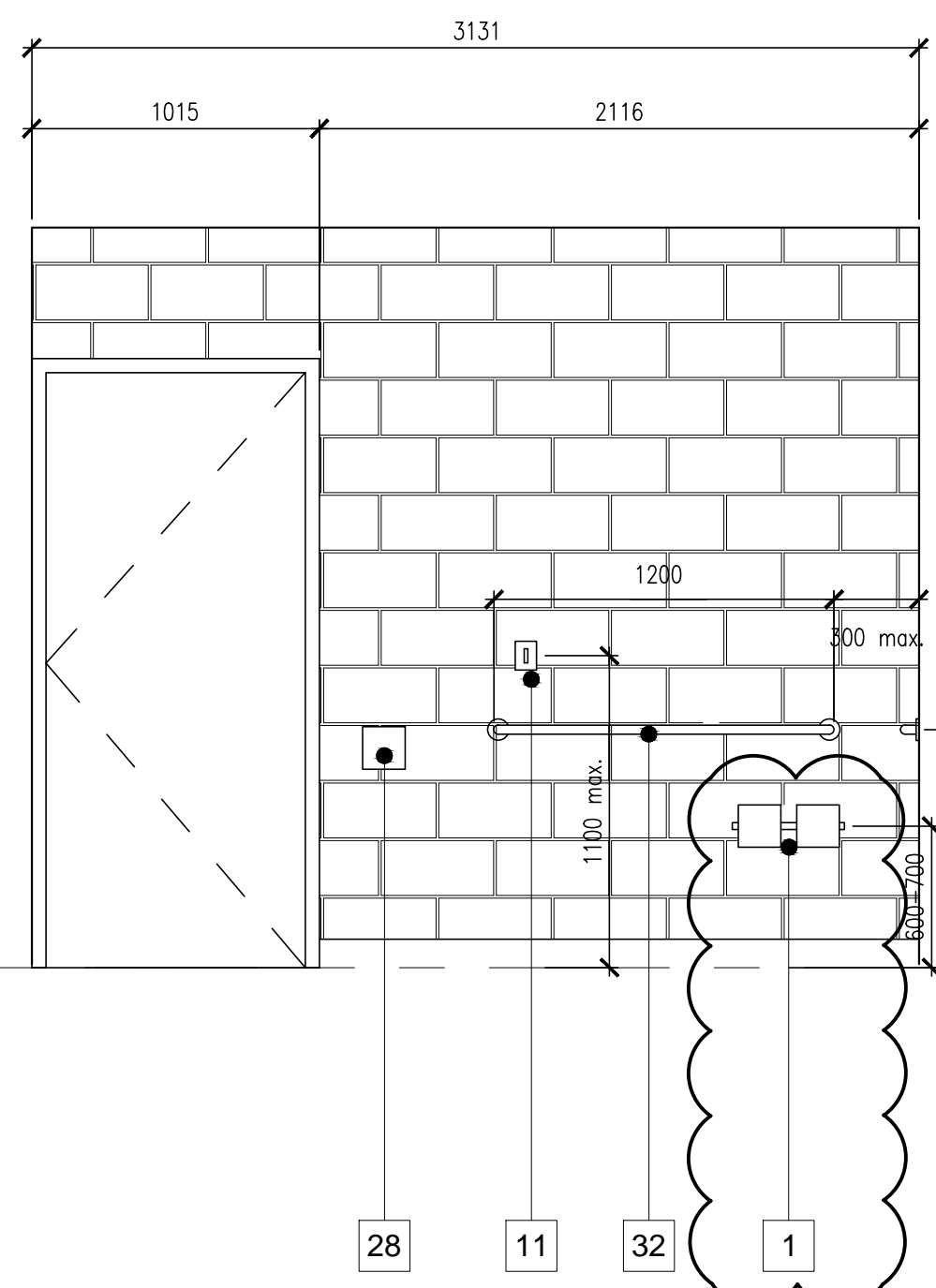
ELEVATION C



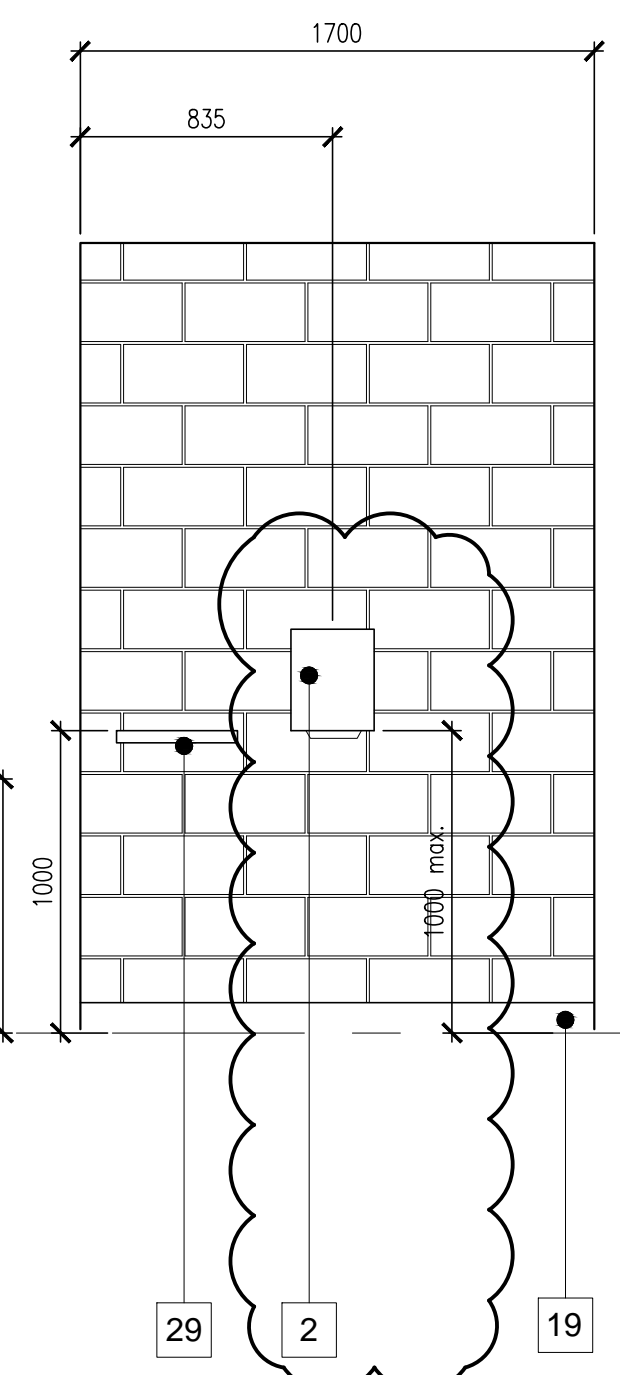
ELEVATION D



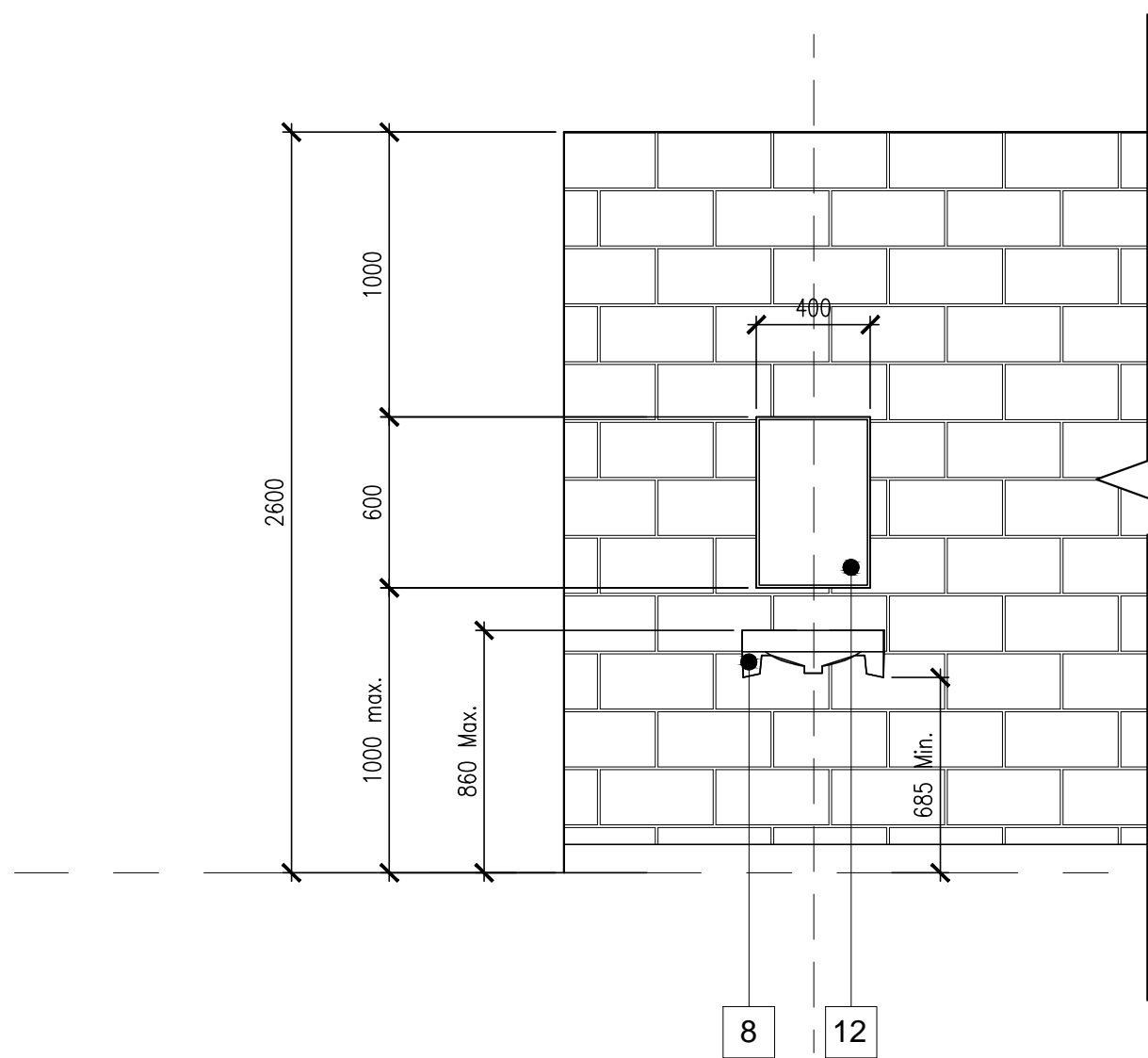
ELEVATION B



ELEVATION C

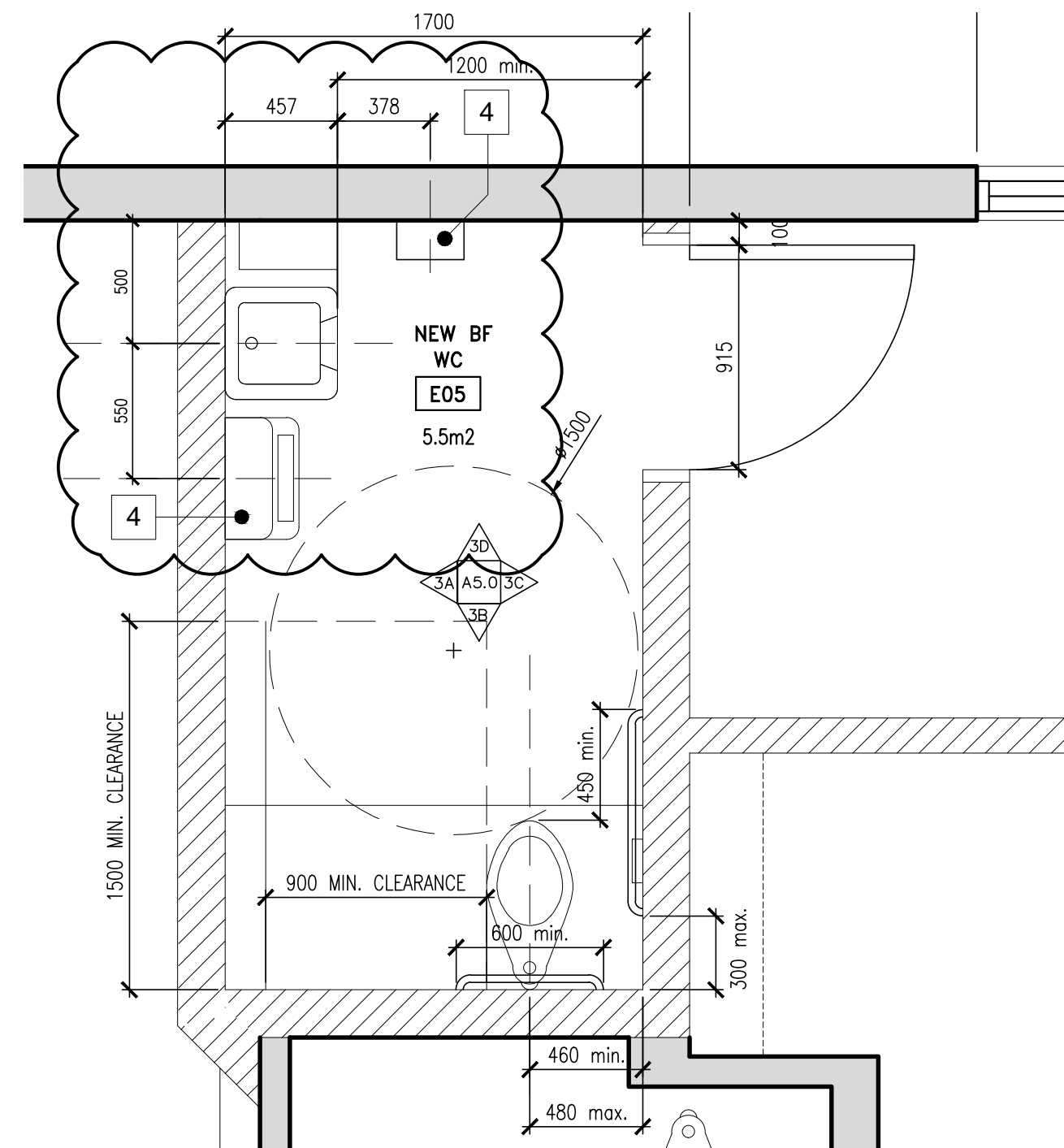


ELEVATION D



NEW BARRIER FREE SINK

1 : 25



NEW BARRIER FREE WASHROOM

1 : 25