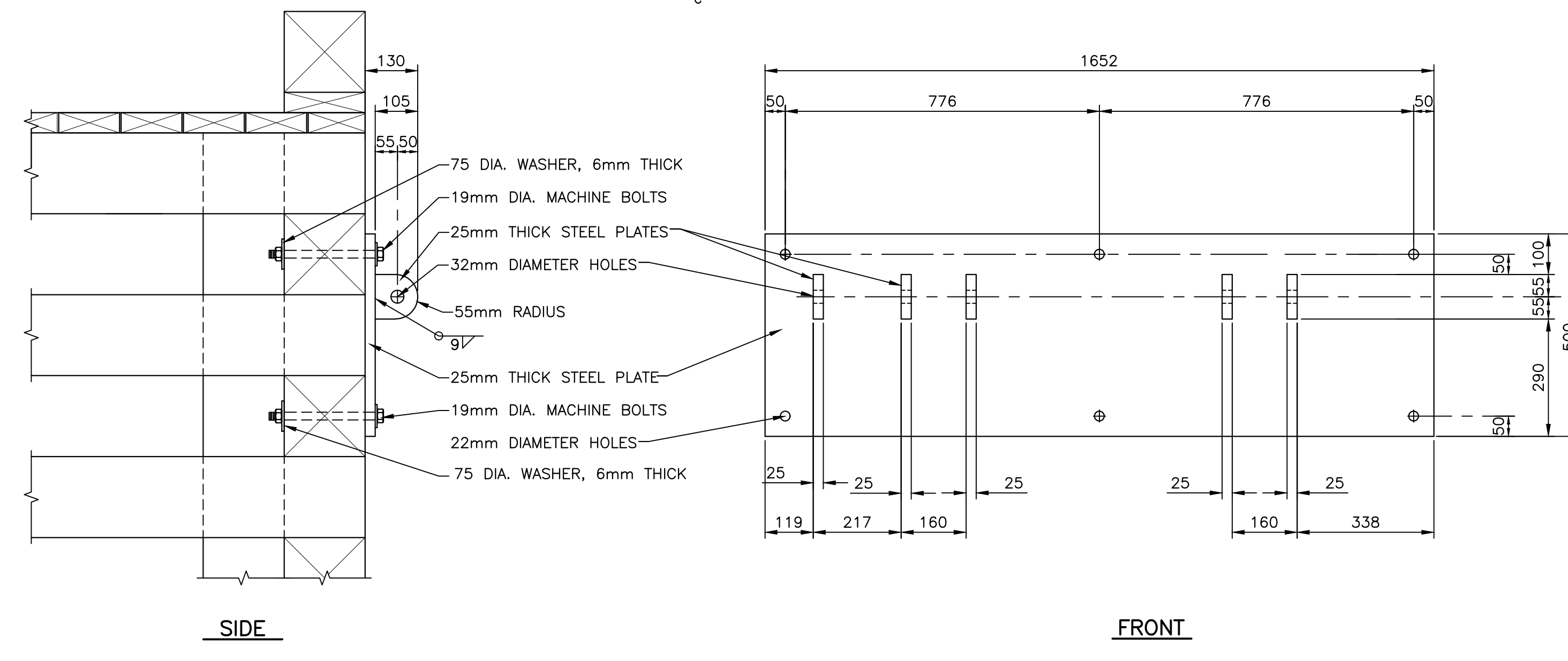
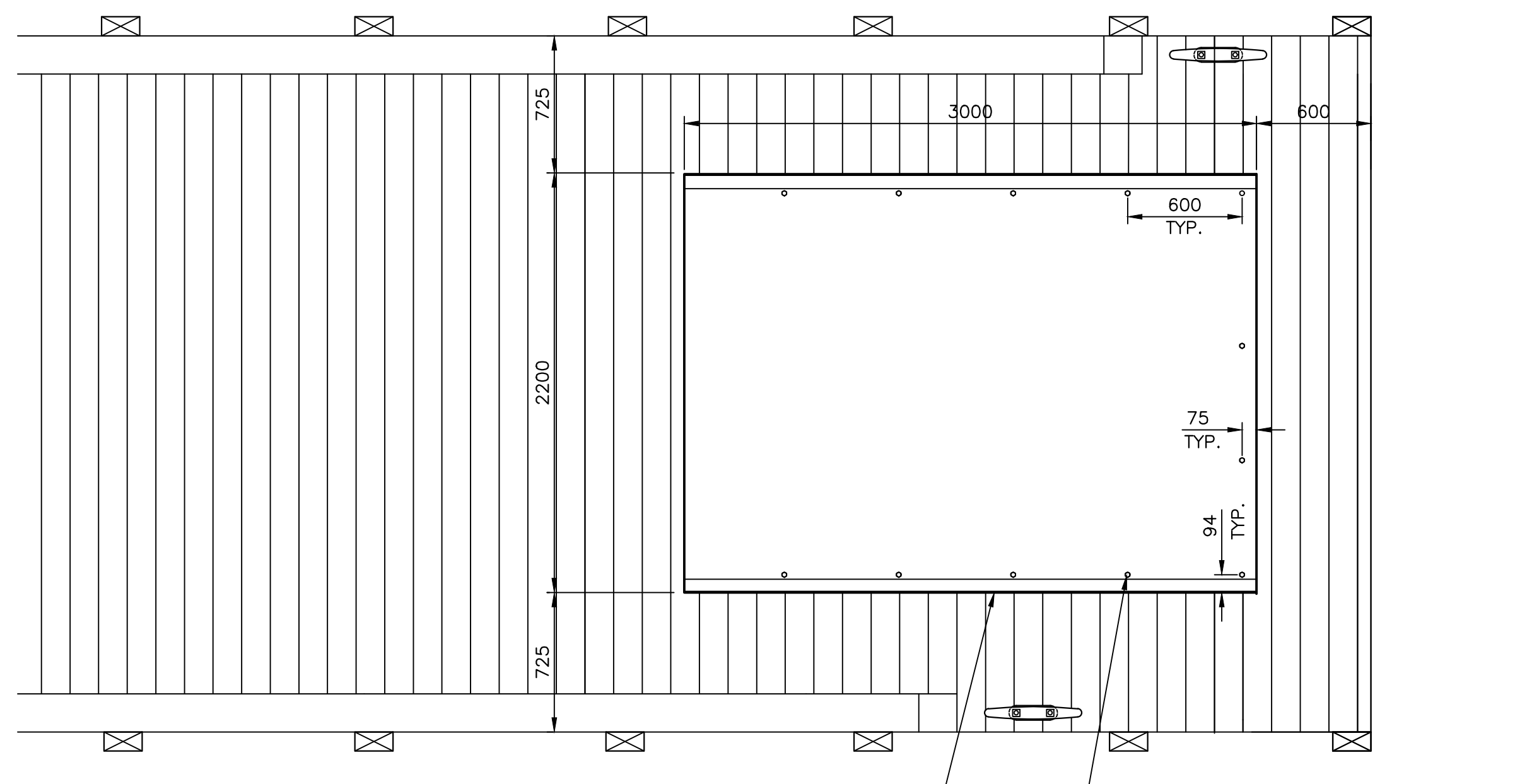


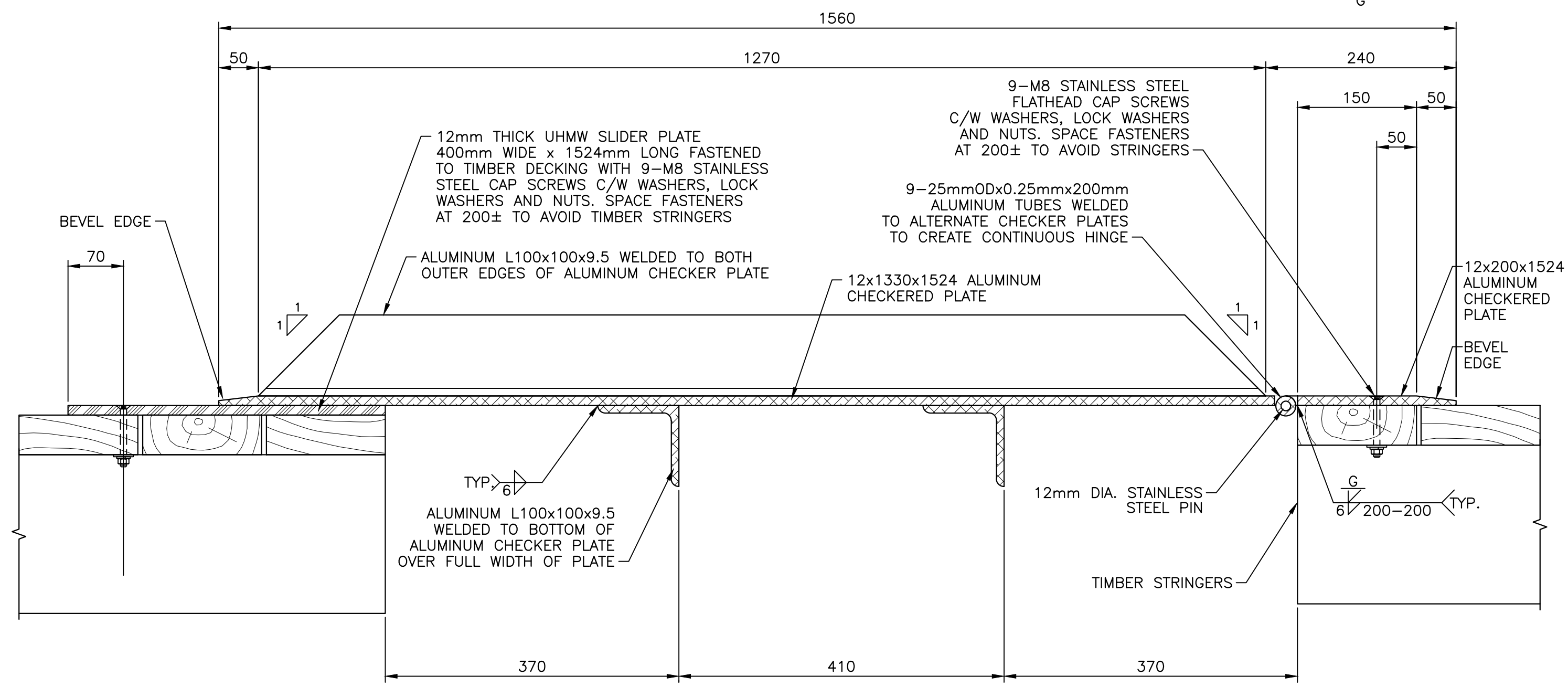
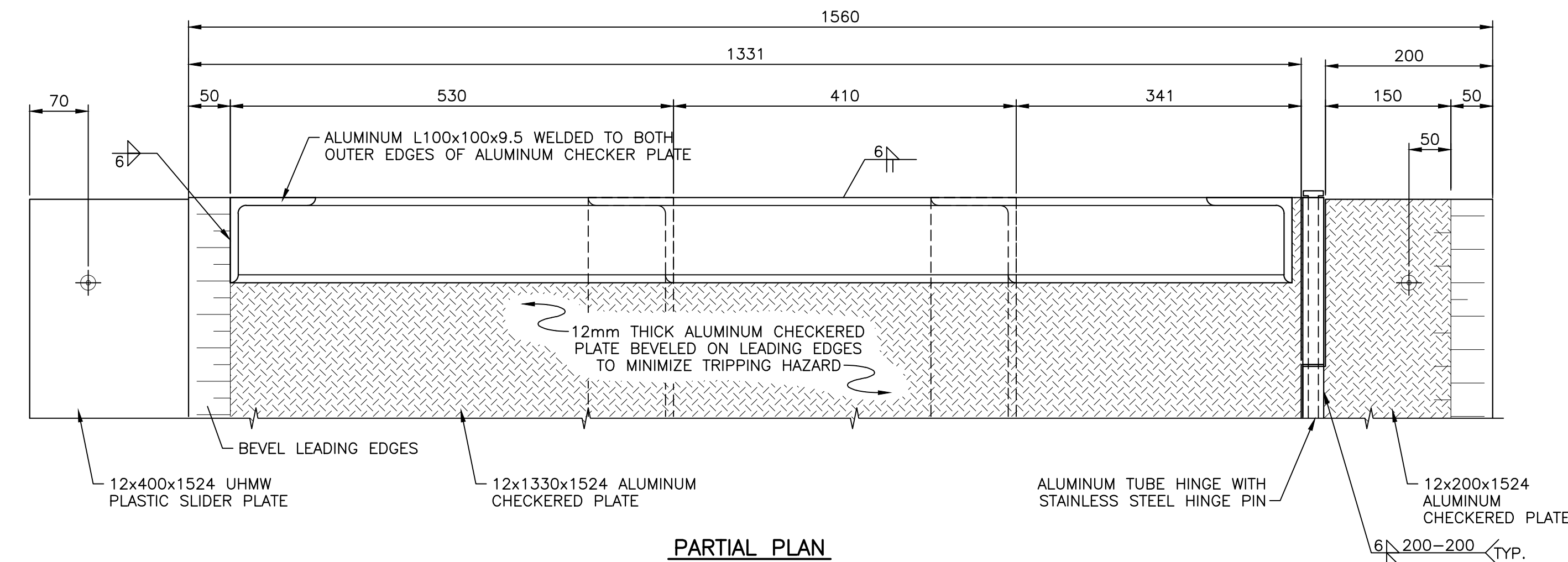
**TYPE 1 DOCK BRACKET DETAIL (12 REQUIRED)**  
SCALE: 1:10  
**1**  
517



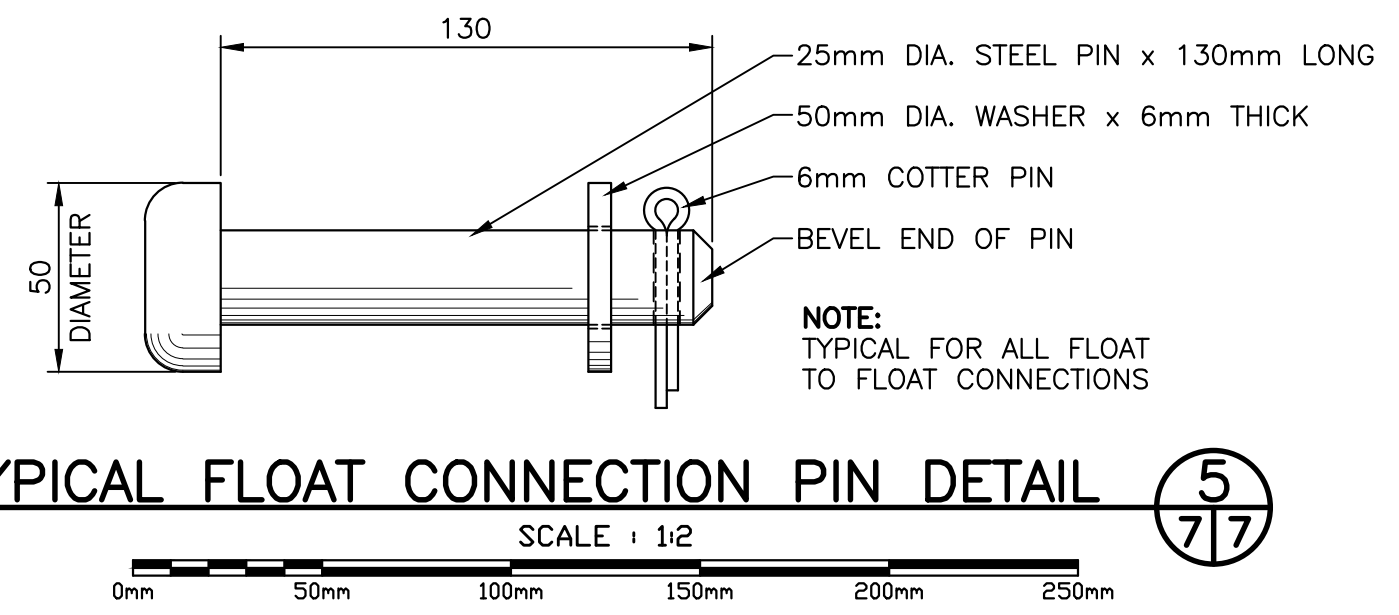
**TYPE 2 DOCK BRACKET DETAIL**  
(12 REQUIRED - 6 WITH 6 OPPOSITE HAND)  
SCALE: 1:10  
**2**  
517



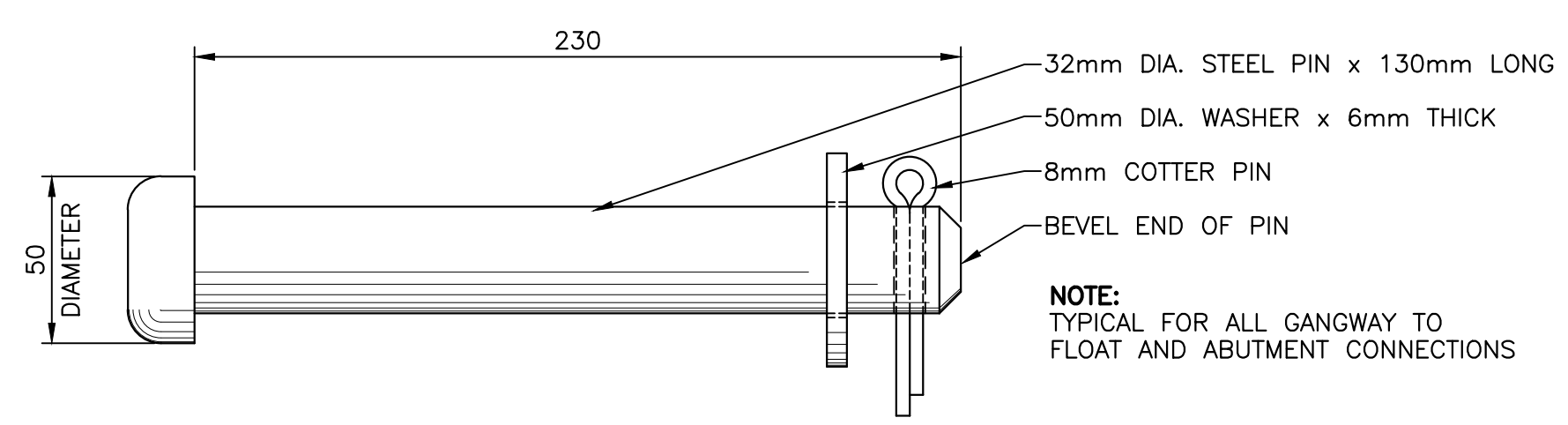
**GANGWAY WEAR PLATE DETAIL (2 REQUIRED)**  
SCALE: 1:25  
**3**  
217



**FLOATING DOCK BRIDGING PLATE ASSEMBLY DETAIL**  
SCALE: 1:5  
**4**  
217



**TYPICAL FLOAT CONNECTION PIN DETAIL**  
SCALE: 1:2  
**5**  
717



**TYPICAL RAMP CONNECTION PIN DETAIL**  
SCALE: 1:2  
**6**  
717

0	ISSUED FOR TENDER	AUG. 2018
revisions		date

project  
**FLOATING WHARVES  
GUNNING COVE  
SHELburne COUNTY  
NOVA SCOTIA**  
project

drawing  
**MISCELLANEOUS  
FLOATING WHARF  
CONNECTION DETAILS**  
design

designed M. HIMMELMAN/K. McCARTHY conçu  
date JUNE 2018  
drawn R.L. SMELTZER dessiné  
date JUNE 2018

approved  
date  
Tender Submission

PWGC Project Manager Administrateur de projets TP/GC  
project number no. du projet  
**R.098182.001**

drawing no. no. du dessin  
**Sht.7 of 10**