

Fisheries and  
Oceans Canada  
Coast Guard

Pêches  
et Océans  
Garde cotiere

# ROBIN HOOD BAY TRANSMITTER FACILITY RENOVATIONS ST. JOHN'S NEWFOUNDLAND CANADA

**PROJECT NO. F6839-185502**  
**DATE: MAY 23, 2018**  
**ISSUED: ISSUED FOR TENDER**

DRAWING LIST:

ARCHITECTURAL

01N1007A034A101 FLOOR PLAN, DOOR SCHEDULE, NOTES AND EXISTING PHOTOS

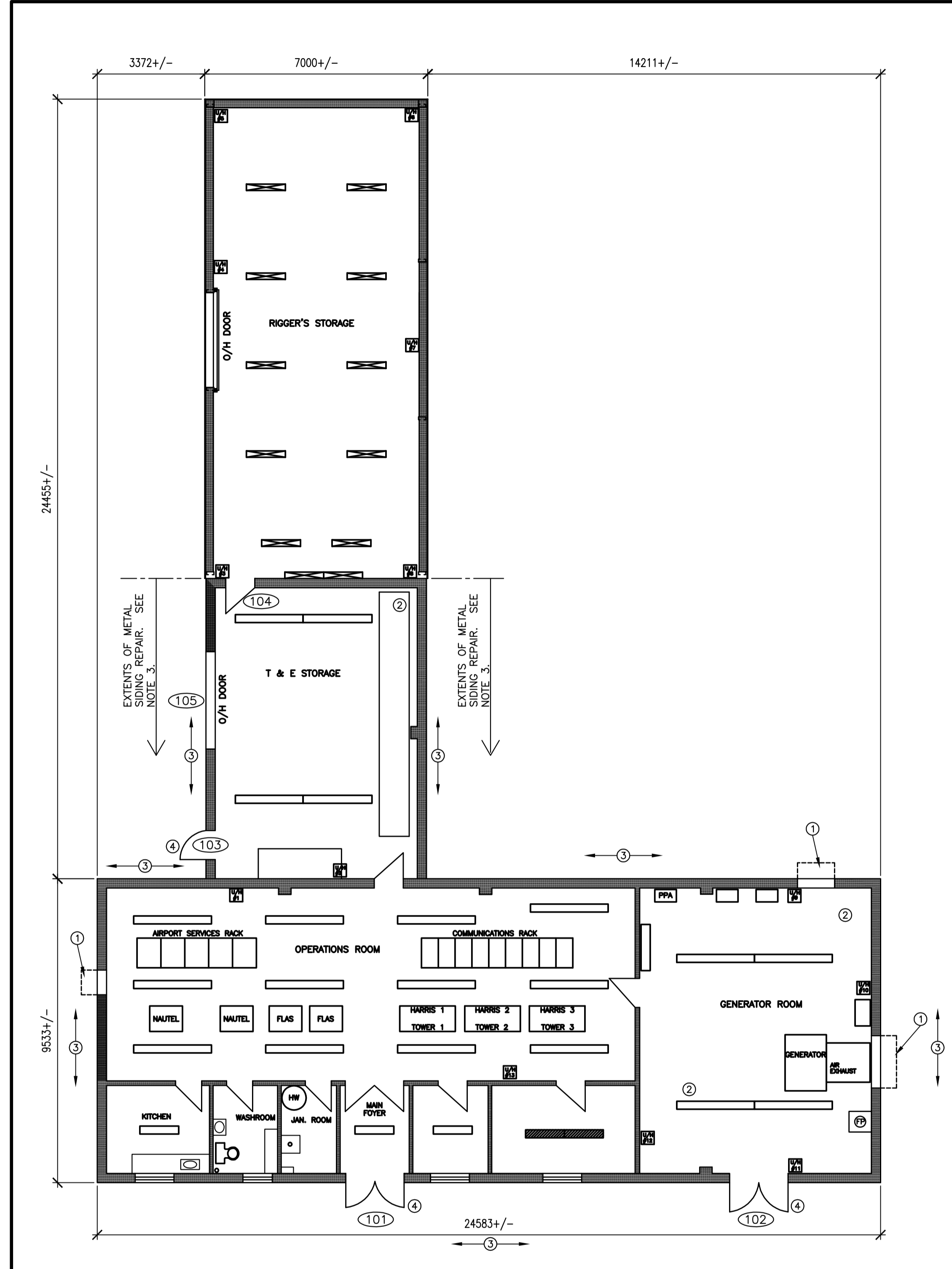
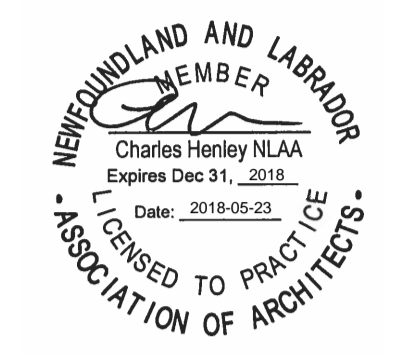
MECHANICAL

01N1007A034M100 MECHANICAL PLUMBING AND HVAC

ELECTRICAL

01N1007A034E1 ELECTRICAL LEGEND, EXISTING AND REVISED FLOOR PLANS  
01N1007A034E2 LIGHTING FIXTURE SCHEDULE, PANEL SCHEDULES AND RISER DIAGRAM

**Canada**



2 FLOOR PLAN  
SCALE: 1:100



5 PHOTOS - EXISTING CONDITIONS

<p><b>KEYNOTES:</b></p> <ol style="list-style-type: none"> <li>WALL MOUNTED VENTILATION HOOD.</li> <li>REPAIR DAMAGE/MISSING ROOF BATT INSULATION AND BARRIER IN THESE AREAS. ALLOW FOR TOTAL OF 9m<sup>2</sup>. SEE ALSO PHOTOS 1, 2 AND 3.</li> <li>METAL SIDING REPAIR. REMOVE ALL EXISTING CAULKING AT TOP AND BOTTOM OF WALL, AND AT ALL PENETRATIONS (DOORS, WINDOWS, VENT HOODS, ETC.) RE-CAULK WALL WITH NEW CAULKING, INCLUDING ALL PENETRATIONS. FIX/REPLACE MISSING, RUSTED, AND/OR LOOSE FASTENERS WHERE REQUIRED. SEE PHOTOS 7 AND 8 FOR EXAMPLES.</li> <li>SUPPLY AND INSTALL NEW PERIMETER FLASHINGS AT NEW DOORS. CAULK FLASHING.</li> </ol>	<p><b>SPECIFICATIONS:</b></p> <p>CAULKING: MULTI-COMPONENT, CHEMICALLY CURING POLYURETHANE SEALANT, DYMERIC OR APPROVED ALTERNATE.</p> <p>OVERHEAD SECTIONAL DOOR: INSULATED STEEL OVERHEAD SECTIONAL DOORS WITH INTERLOCKING STEEL SECTIONS OF MINIMUM UNCOATED STEEL THICKNESS OF 0.85MM, COMPLETE WITH MINIMUM Z275 GALVANIZED COATING. INCLUDE ALL STANDARD COMMERCIAL GRADE HARDWARE INCLUDING BUT NOT LIMITED TO TRACK, TRACK SUPPORTS, SPRING COUNTERBALANCE, ROLLERS, HINGES, AND WEATHERSTRIPPING. PREFINISHED WITH FACTORY APPLIED SMP FINISH, COLOUR CHOSEN BY OWNER FROM MANUFACTURER'S STANDARD RANGE. OPERATION: MANUAL CHAIN HOIST, 2 HANDLES EITHER SIDE, C/W CABLE FAIL SAFE DEVICE.</p> <p>HOLLOW METAL DOORS AND FRAMES: INSULATED STEEL DOORS AND FRAMES WITH MINIMUM STEEL THICKNESS OF 1.6MM C/W Z275 GALVANIZED COATING. POLYSTYRENE OR POLYISOCYANURATE CORE.</p>
--	---

4 SPECIFICATIONS AND KEYNOTES

<p><b>DOOR HARDWARE</b></p> <ul style="list-style-type: none"> <li>COMMERCIAL QUALITY. STAINLESS STEEL FINISH UNLESS NOTED OTHERWISE.</li> <li>KEYING TO MATCH CURRENT BUILDING'S MASTER KEY SYSTEM.</li> <li>VERIFY DOORS AND FRAMES ARE PROPERLY PREPARED AND REINFORCED TO ACCOMMODATE SPECIFIED HARDWARE.</li> <li>INSTALL HARDWARE USING ONLY MANUFACTURER SUPPLIED AND APPROVED FASTENERS.</li> <li>SURFACE CLOSURES AND OVERHEAD STOPS ARE TO BE ATTACHED THROUGH THE DOOR USING "SEX BOLTS"</li> </ul> <p><b>HG-01 (DOOR 103)</b></p> <ul style="list-style-type: none"> <li>3 - FIVE KNUCKLE FULL MORTICE HINGE.</li> <li>1 - MORTICE LOCK SET, FUNCTION F04</li> <li>1 - SURFACE CLOSURE (COMPATIBLE WITH OVERHEAD STOP)</li> <li>1 - OVERHEAD STOP (COMPATIBLE WITH SURFACE CLOSURE)</li> <li>1 - THRESHOLD</li> <li>1 - DOOR SWEEP</li> <li>1 - SET WEATHER STRIPPING</li> </ul> <p><b>HG-02 (DOORS 101 &amp; 102)</b></p> <ul style="list-style-type: none"> <li>6 - FIVE KNUCKLE FULL MORTICE HINGE.</li> <li>1 - MORTICE LOCK SET, FUNCTION F04</li> <li>1 - ASTRIGAL</li> <li>1 - SET MANUAL FLUSH BOLTS</li> <li>1 - SURFACE CLOSURE (COMPATIBLE WITH OVERHEAD STOP)</li> <li>2 - OVERHEAD STOP (COMPATIBLE WITH SURFACE CLOSURE)</li> <li>1 - THRESHOLD (FULL WIDTH OF DOUBLE DOORS)</li> <li>2 - DOOR SWEEP</li> <li>2 - SET WEATHER STRIPPING</li> </ul>	<p><b>DOOR AND FRAME OPENING NUMBERS</b></p> <p><b>DOOR/FRAME ELEVATIONS</b></p> <p><b>HG-03 (DOOR 104)</b></p> <ul style="list-style-type: none"> <li>1 - SURFACE CLOSURE</li> <li>1 - OVERHEAD STOP</li> <li>1 - THRESHOLD</li> <li>1 - DOOR SWEEP</li> <li>1 - SET WEATHER STRIPPING</li> </ul> <p><b>HG-04 (DOOR 105)</b></p> <ul style="list-style-type: none"> <li>MANUALLY OPERATED SECTIONAL OVERHEAD DOOR ASSEMBLY.</li> <li>ALL HARDWARE SUPPLIED AND INSTALLED WITH SECTIONAL OVERHEAD DOOR ASSEMBLY.</li> </ul>
--	---

3 DOOR AND FRAME NOTES

FRAME NUMBER	FROM ROOM	TO ROOM	FRAME SIZE		TYPE	ELEV.	FINISH	DOOR			HARD. GROUP	DOOR / FRAME NOTES
			A	B				TYPE	ELEV.	FINISH		
101	FOYER	EXTERIOR	2-914	2134	PSF	F1	PT	HMI	D1	PT	H1	THERMALLY BROKEN FRAME
102	GENERATOR ROOM	EXTERIOR	2-914	2134	PSF	F1	PT	HMI	D1	PT	H1	THERMALLY BROKEN FRAME
103	T & E STORAGE	EXTERIOR	914	2134	PSF	F1	PT	HMI	D1	PT	H2	THERMALLY BROKEN FRAME
104	T & E STORAGE	RIGGER'S STORAGE	914	2134	EX-PSF	EX	EX	EX-HMI	EX	EX	H3	NEW HARDWARE ON EXISTING DOOR AND FRAME
105	T & E STORAGE	EXTERIOR	3050	3050	--	--	--	--	--	--	H4	OVERHEAD DOOR C/W NEW HARDWARE

CONTRACTOR TO CONFIRM ALL DOOR SIZES ON SITE.

1 DOOR AND FRAME SCHEDULE

ROBIN HOOD BAY TRANSMITTER FACILITY RENOVATIONS ST. JOHN'S, NL CANADA

FLOOR PLAN, DOOR SCHEDULE, NOTES AND EXISTING PHOTOS

designed	conçu
date 2018.01.08	
drawn DT	dessiné
date 2018.01.08	
approved	approuvé
date	
Tender	Soumission
PWGSC Project Manager	Administrateur de projets TPSGC
project number	no. du projet
<b>F6839-185502</b>	
drawing no.	no. du dessin
<b>01N1007A034A101</b>	

HEAT PUMP EVAPORATOR UNIT SCHEDULE									
TAG	TYPE	SUPPLIER:	COOLING CAPACITY (KW)	HEATING CAPACITY (KW)	MOTOR DATA				REMARKS
					MCA	VOLTS	PHASE	CYCLES	
EV-1	WALL MOUNTED	MECHANICAL CONTRACTOR	3.5	4.0	0.4	208/230	1	60	CONTRACTOR TO INSTALL C/W ALL REFRIGERATION PIPING AND CONTROLS
EV-2	WALL MOUNTED	MECHANICAL CONTRACTOR	5.3	5.9	0.5	208/230	1	60	CONTRACTOR TO INSTALL C/W ALL REFRIGERATION PIPING AND CONTROLS
EV-3	CEILING MOUNTED	MECHANICAL CONTRACTOR	3.5	4.0	0.4	208/230	1	60	C/W ALL REFRIGERATION PIPING AND CONTROLS
EV-4	WALL MOUNTED	MECHANICAL CONTRACTOR	5.3	5.9	0.5	208/230	1	60	C/W ALL REFRIGERATION PIPING AND CONTROLS
EV-5	WALL MOUNTED	MECHANICAL CONTRACTOR	7.0	7.8	0.6	208/230	1	60	C/W ALL REFRIGERATION PIPING AND CONTROLS
EV-6	WALL MOUNTED	MECHANICAL CONTRACTOR	7.0	7.8	0.6	208/230	1	60	C/W ALL REFRIGERATION PIPING AND CONTROLS

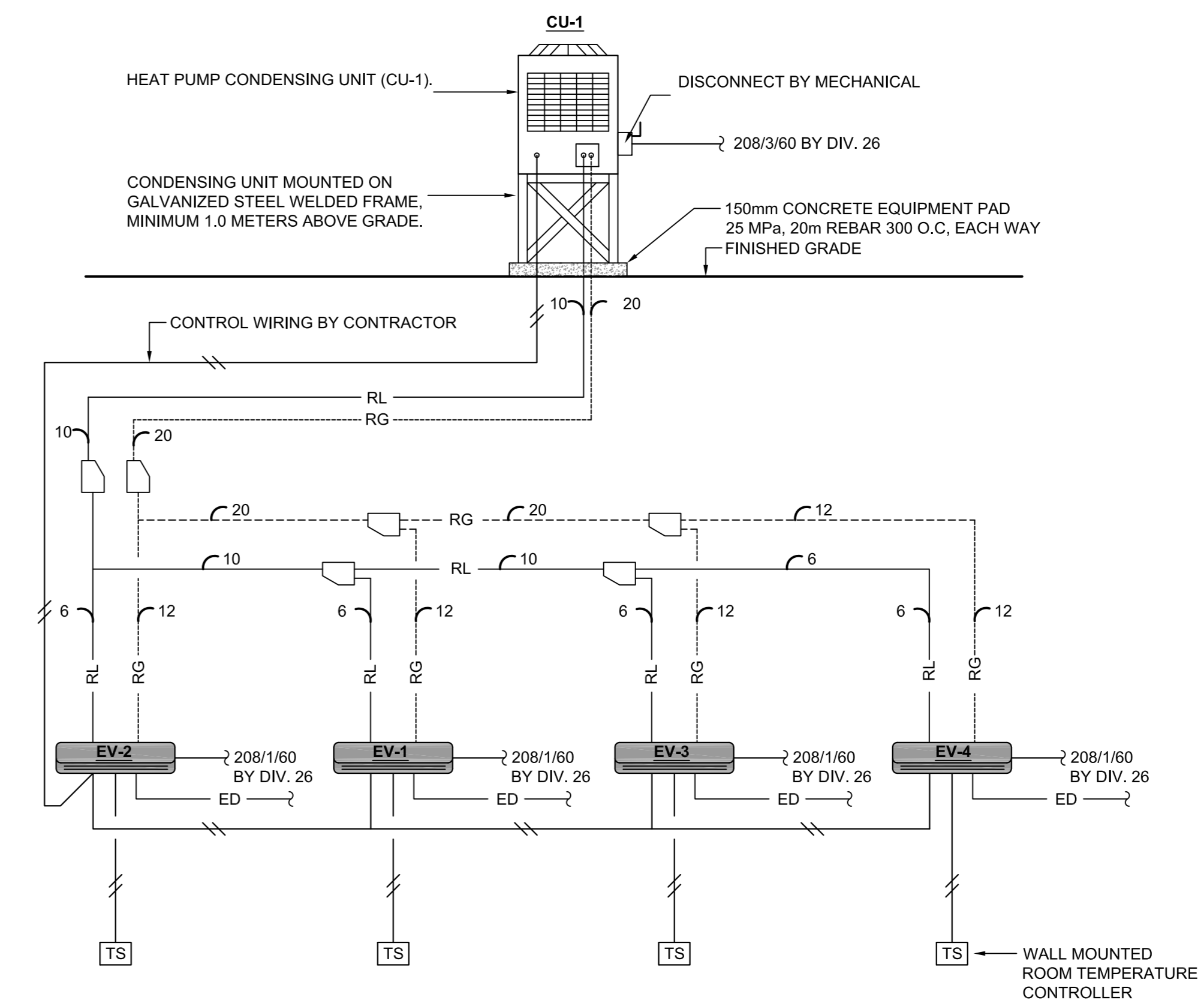
  

HEAT PUMP CONDENSING UNIT SCHEDULE										
TAG	TYPE	SUPPLIER:	COOLING CAPACITY (KW)	HEATING CAPACITY (KW)	MOTOR DATA				REMARKS	
					MCA (A)	MOCF (A)	VOLTS	PHASE		CYCLES
CU-1	SUPPORT STAND	MECHANICAL CONTRACTOR	21.1	23.7	27.6	35	208/230	3	60	CONTRACTOR TO INSTALL C/W ALL REFRIGERATION PIPING AND CONTROLS
CU-2	SUPPORT STAND	MECHANICAL CONTRACTOR	16.7	16.7	29.1	35	208/230	1	60	CONTRACTOR TO INSTALL C/W ALL REFRIGERATION PIPING AND CONTROLS

DESIGN CONDITIONS: AMBIENT CONDITIONS: 35C, COOLING COP OF 4.2

**EQUIPMENT SCHEDULES**  
N.T.S.

**2**  
M100



**HEAT PUMP SCHEMATIC (CU-1)**  
N.T.S.

**3**  
M100

**SPECIFICATION - REFRIGERATION**

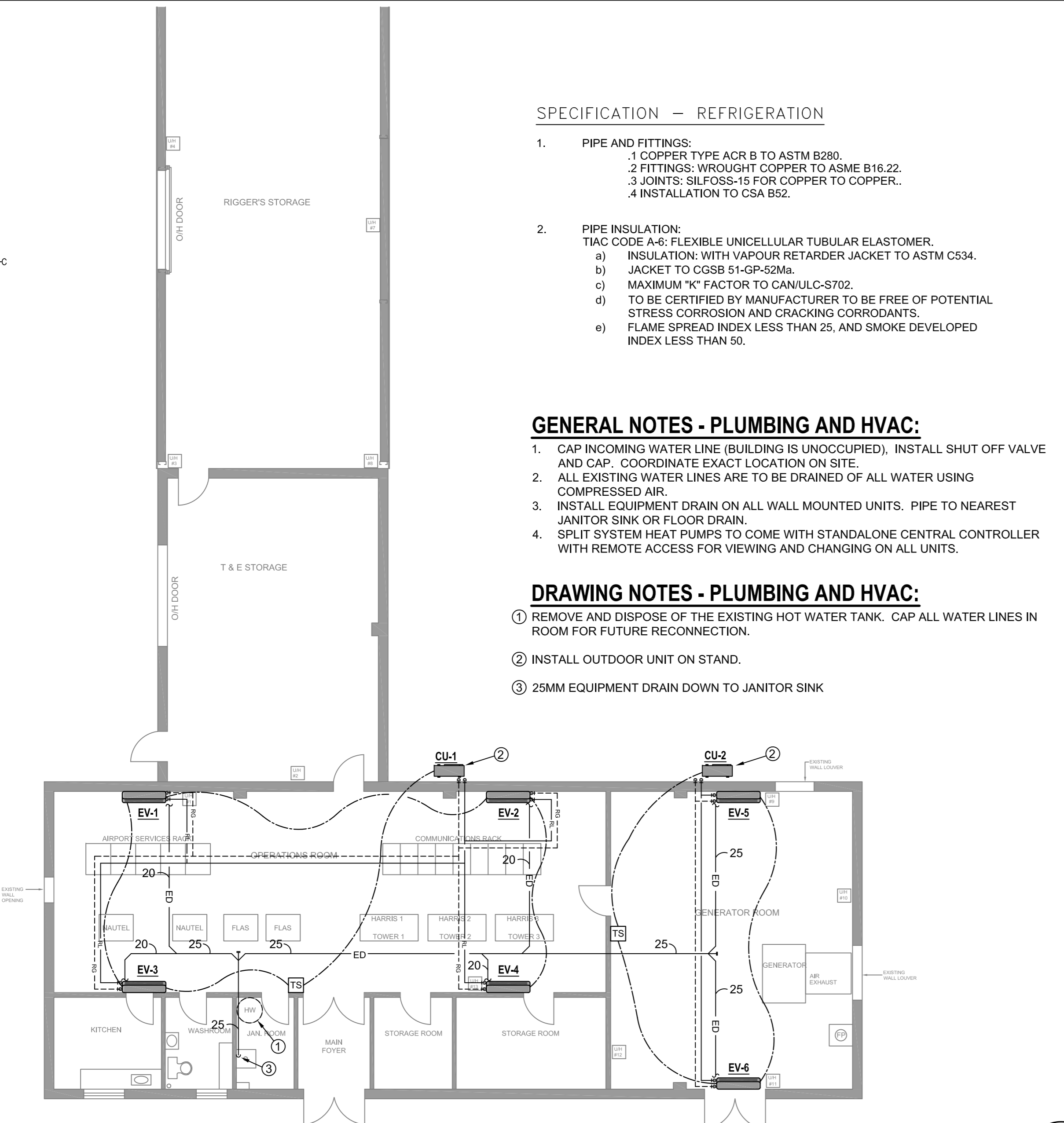
- PIPE AND FITTINGS:
  - COPPER TYPE ACR B TO ASTM B280.
  - FITTINGS: WROUGHT COPPER TO ASME B16.22.
  - JOINTS: SILFOSS-15 FOR COPPER TO COPPER.
  - INSTALLATION TO CSA B52.
- PIPE INSULATION:
  - TIAC CODE A-6: FLEXIBLE UNICELLULAR TUBULAR ELASTOMER.
  - INSULATION: WITH VAPOUR RETARDER JACKET TO ASTM C534.
  - JACKET TO CGSB 51-GP-52Ma.
  - MAXIMUM "K" FACTOR TO CAN/ULC-S702.
  - TO BE CERTIFIED BY MANUFACTURER TO BE FREE OF POTENTIAL STRESS CORROSION AND CRACKING CORRODANTS.
  - FLAME SPREAD INDEX LESS THAN 25, AND SMOKE DEVELOPED INDEX LESS THAN 50.

**GENERAL NOTES - PLUMBING AND HVAC:**

- CAP INCOMING WATER LINE (BUILDING IS UNOCCUPIED), INSTALL SHUT OFF VALVE AND CAP. COORDINATE EXACT LOCATION ON SITE.
- ALL EXISTING WATER LINES ARE TO BE DRAINED OF ALL WATER USING COMPRESSED AIR.
- INSTALL EQUIPMENT DRAIN ON ALL WALL MOUNTED UNITS. PIPE TO NEAREST JANITOR SINK OR FLOOR DRAIN.
- SPLIT SYSTEM HEAT PUMPS TO COME WITH STANDALONE CENTRAL CONTROLLER WITH REMOTE ACCESS FOR VIEWING AND CHANGING ON ALL UNITS.

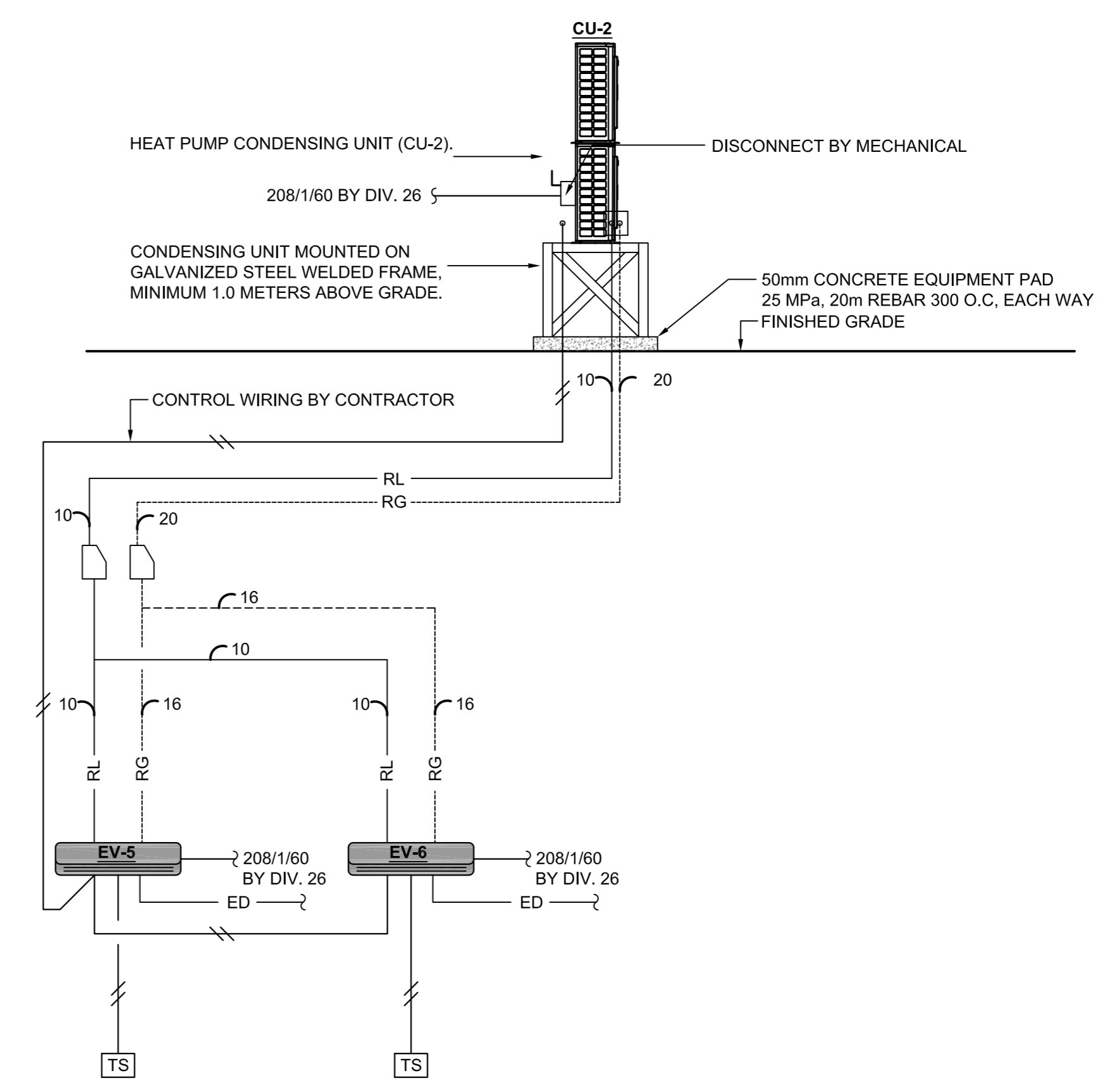
**DRAWING NOTES - PLUMBING AND HVAC:**

- REMOVE AND DISPOSE OF THE EXISTING HOT WATER TANK. CAP ALL WATER LINES IN ROOM FOR FUTURE RECONNECTION.
- INSTALL OUTDOOR UNIT ON STAND.
- 25MM EQUIPMENT DRAIN DOWN TO JANITOR SINK



**PLUMBING AND HVAC FLOOR PLAN**  
SCALE: 1:100

**1**  
M100



**HEAT PUMP SCHEMATIC (CU-2)**  
N.T.S.

**4**  
M100

**PERMIT AND SEAL**

PROVINCE OF NEWFOUNDLAND AND LABRADOR  
ENGINEERING PERMIT J0291  
STANTEC CONSULTING LTD.  
04862  
Signature or Member Number (Member-in-Responsible Charge)



0	ISSUED FOR TENDER	MAY 23 2018
revisions		date
project	ROBIN HOOD BAY TRANSMITTER FACILITY RENOVATIONS	project
drawing	MECHANICAL PLUMBING AND HVAC	descri
designed	B. DAWE	comp
date	2017.01.10	
drawn	C. ADAMS	descri
date	2018.05.23	
approved	B. DAWE	approv
date	2018.05.23	
Tender	AARON SLANEY PWGSC Project Manager	Submission
project number	F6839-185502	no. du projet
drawing no.	01N1007A034M100	no. du dessin

## ELECTRICAL SPECIFICATIONS

### 1. SCOPE OF WORK:

THIS WORK SHALL INCLUDE BUT NOT BE LIMITED TO:

- DEMOLITION OF EXISTING ELECTRICAL EQUIPMENT INCLUDING LIGHT FIXTURES, JUNCTION BOXES, CONDUIT AND WIRE.
  - INSTALLATION OF NEW EXTERIOR LIGHTING FIXTURES. FIXTURES SUPPLIED BY CCG.
  - SUPPLY AND INSTALLATION OF NEW DISCONNECT SWITCHES, JUNCTION BOXES, CONDUIT AND WIRE FOR POWER CONNECTIONS TO NEW MECHANICAL INDOOR AND OUTDOOR MINI-SPLIT UNITS (CONDENSERS AND EVAPORATORS).
  - SUPPLY AND INSTALLATION OF NEW BREAKERS IN EXISTING PANELS FOR POWER CONNECTIONS TO NEW MECHANICAL INDOOR AND OUTDOOR MINI-SPLIT UNITS.
2. THE COMPLETE ELECTRICAL INSTALLATION SHALL CONFORM TO THE LATEST EDITION OF THE CANADIAN ELECTRICAL CODE AND LOCAL BY LAWS CURRENTLY IN FORCE IN THE PROVINCE AND MUNICIPALITY.
  3. ALL WORK SHALL BE PERFORMED BY PERSONS HAVING QUALIFICATIONS AS REQUIRED BY ANY AUTHORITY HAVING JURISDICTION AND WHO ARE COMPETENT IN THEIR TRADE.
  4. ALL WORK SHALL BE SUBJECT TO INSPECTION BY LOCAL INSPECTION AUTHORITY, THE OWNER OR HIS REPRESENTATIVE. MAKE CHANGES AND ALTERATIONS REQUIRED BY INSPECTION AUTHORITY WITHOUT CHARGE TO OWNER.
  5. PAYMENT FOR PERMITS AND DEPOSITS FOR THE WORK SHALL BE INCLUDED IN THE TENDER PRICE.

6. BEFORE SUBMITTING A PROPOSAL FOR THE WORK COVERED BY THE SPECIFICATIONS, EACH BIDDER SHALL VISIT AND INSPECT THE SITE OF THE RENOVATIONS IN ORDER THAT HE MAY BE THOROUGHLY FAMILIAR WITH THE SITE AND LOCAL CONDITIONS, WITH THE CHARACTER AND DETAILS OF THE DEMOLITION AND NEW CONSTRUCTION AND WITH ALL MATTERS WHICH CAN, IN ANY WAY, AFFECT THE WORK COVERED BY THE SPECIFICATIONS. NO CLAIM WILL BE ENTERTAINED OR ALLOWED FOR ANY LABOUR, MATERIALS OR OTHER EXTRAS THAT MAY BE REQUIRED FOR THE PROPER EXECUTION AND COMPLETION OF THE CONTRACT, WHICH COULD HAVE BEEN DETERMINED BY SITE EXAMINATION.
7. CONTRACTOR SHALL SUPPLY AND INSTALL ALL MATERIALS EXCEPT AS OTHERWISE SPECIFIED. ALL MATERIALS AND EQUIPMENT SHALL BE NEW AND BEAR CSA APPROVAL.
8. ALL PANELBOARDS SHALL BE EQUIPPED WITH HINGED COVER, LOCK AND KEY AND COMPLETE TYPEWRITTEN CIRCUIT SCHEDULE. ALL CIRCUIT BREAKERS SHALL BE OF THE BOLT-ON TYPE FOR ALL PANELS. WHERE MULTI-POLE BREAKERS ARE SPECIFIED PROVIDE A COMMON TRIP BREAKER. HANDLE TIE BARS WILL NOT BE ACCEPTED. CCG TO SUPPLY AND INSTALL BREAKERS FOR MINI-SPLIT A/C UNITS, AS PER REQUIREMENTS OF CONTRACTOR SUPPLIED UNITS.
9. WIRING: IN GENERAL, UNLESS OTHERWISE NOTED, SHALL BE RW90 COPPER CABLES IN EMT.
10. ALL WIRING DEVICES SHALL BE SPECIFICATION GRADE WHITE COLOR COMPLETE WITH STAINLESS STEEL COVERPLATES.
11. CONTRACTOR SHALL BE RESPONSIBLE FOR COORDINATION WITH WORK OF OTHER TRADES, UNLESS OTHERWISE NOTED, MECHANICAL EQUIPMENT CONTROL WIRING (<50V) SHALL BE COMPLETED BY THE MECHANICAL CONTRACTOR.
12. GUARANTEE: THIS CONTRACTOR SHALL GUARANTEE ALL NEW MATERIALS AND WORKMANSHIP FOR A PERIOD OF ONE YEAR FROM DATE OF COMPLETION OF THE WORK AND FINAL ACCEPTANCE.
13. PROVIDE SHOP DRAWINGS FOR ALL NEW ELECTRICAL EQUIPMENT FOR REVIEW BY THE ENGINEER PRIOR TO ORDERING MATERIALS.
14. PROVIDE O&M MANUALS INCLUDING REVIEWED SHOP DRAWINGS, AS-BUILT DRAWINGS AND WARRANTIES.

## ELECTRICAL LEGEND

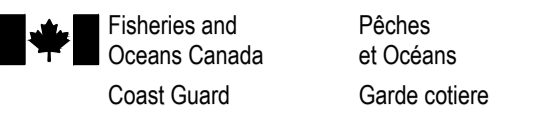
- LED LUMINAIRE TYPE "C", WALL MOUNTED.
- JUNCTION BOX.
- SAFETY DISCONNECT SWITCH SIZED TO SUIT.
- DIRECT CONNECTION TO MECHANICAL EQUIPMENT.

## LIST OF SUBSCRIPTS

- ER - INDICATES EXISTING TO BE REMOVED
- WP - INDICATES WEATHERPROOF

## LIST OF DRAWINGS

- E-101 - ELECTRICAL LEGEND, EXISTING AND REVISED FLOOR PLANS.
- E-102 - LIGHTING FIXTURE SCHEDULE, PANEL SCHEDULES AND RISER DIAGRAM.



PROVINCE OF NEWFOUNDLAND AND LABRADOR

**ENGINEERING PERMIT J0291**

**STANTEC CONSULTING LTD.**

04642

Signature or Member Number  
(Member-in-Responsible Charge)

0	ISSUED FOR TENDER	MAY 23 2018
revisions		date
project		project

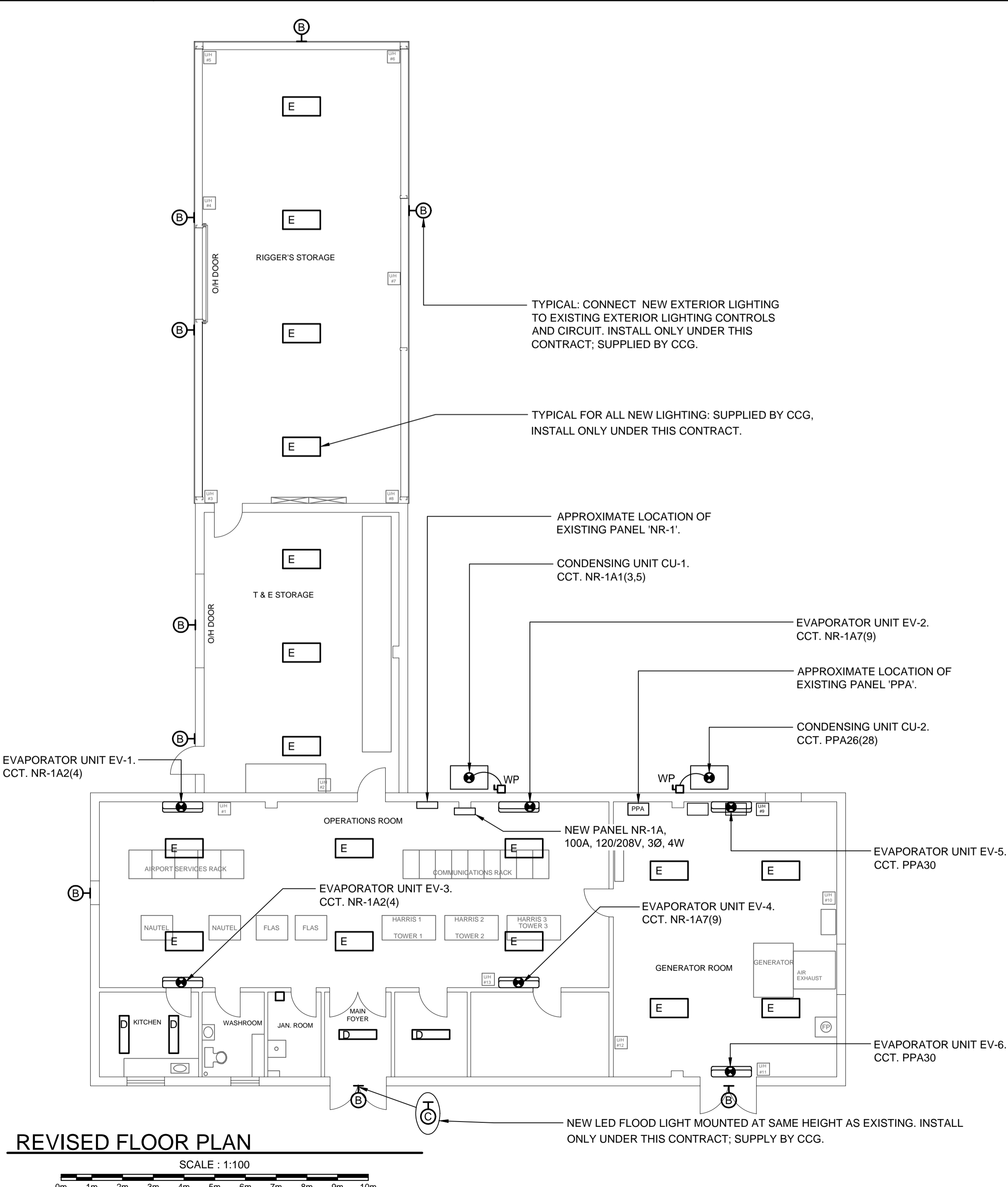
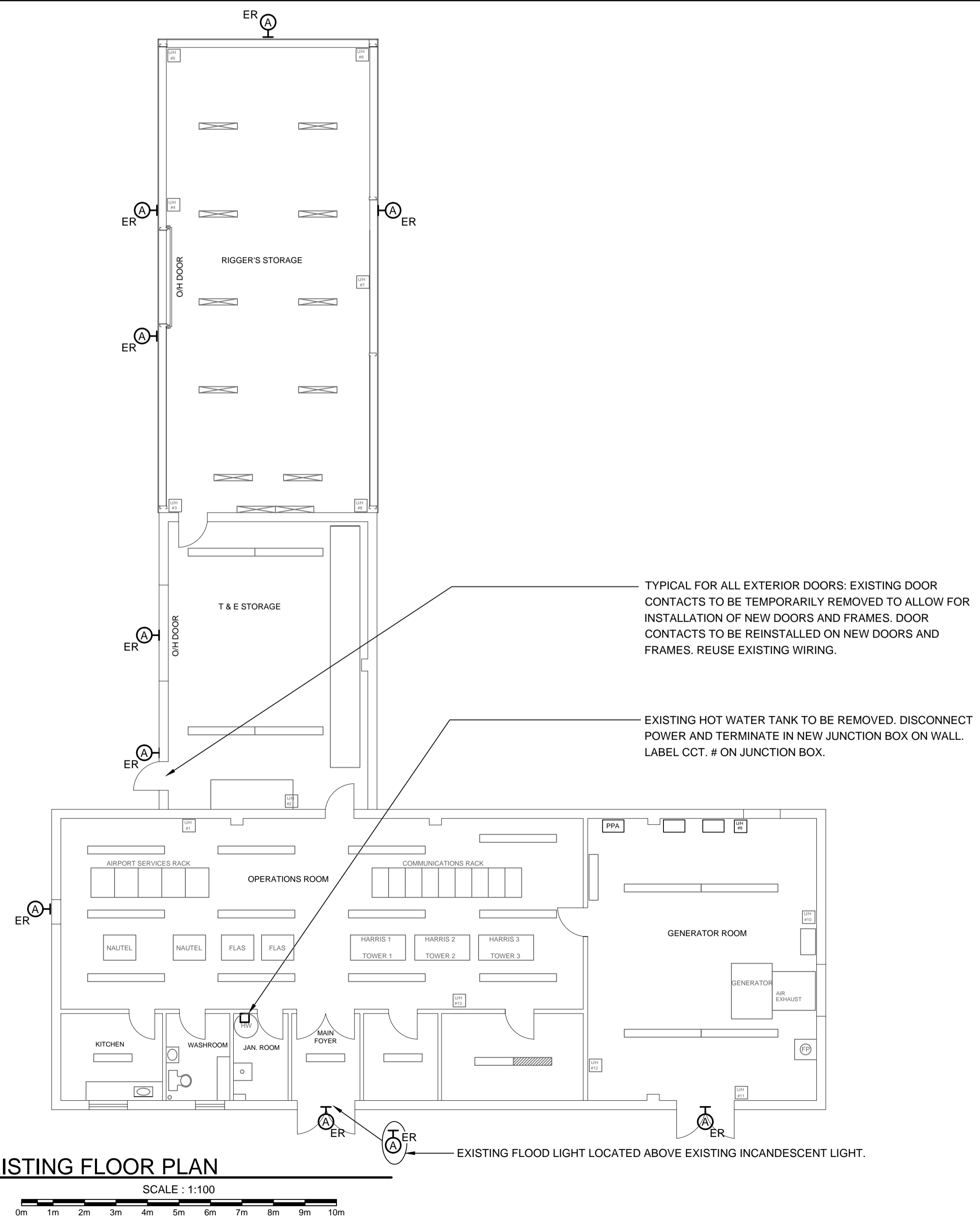
## ROBIN HOOD BAY TRANSMITTER FACILITY RENOVATIONS

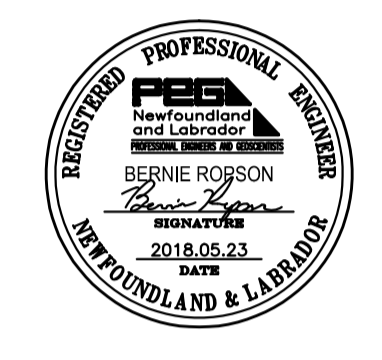
## ELECTRICAL LEGEND, SPECIFICATIONS, REVISED AND EXISTING FLOOR PLANS

designed	JB/MR	compu
date	2018.01.09	
drawn	JB/MR	dessin
date	2018.01.09	
approved	BR	approuvé
date	2018.02.27	
Tender	AARON SLANEY	Submission
PWGSC Project Manager	Administrateur de projets TPSGC	
project number		no. du projet

F6839-185502

01N1007A034-E101





PROVINCE OF NEWFOUNDLAND AND LABRADOR  
ENGINEERING PERMIT J0291  
STANTEC CONSULTING LTD.  
04642  
Signature or Member Number (Member-in-Responsible Charge)

0	ISSUED FOR TENDER	MAY 23 2018
revisions		date
project		project

ROBIN HOOD BAY TRANSMITTER FACILITY RENOVATIONS

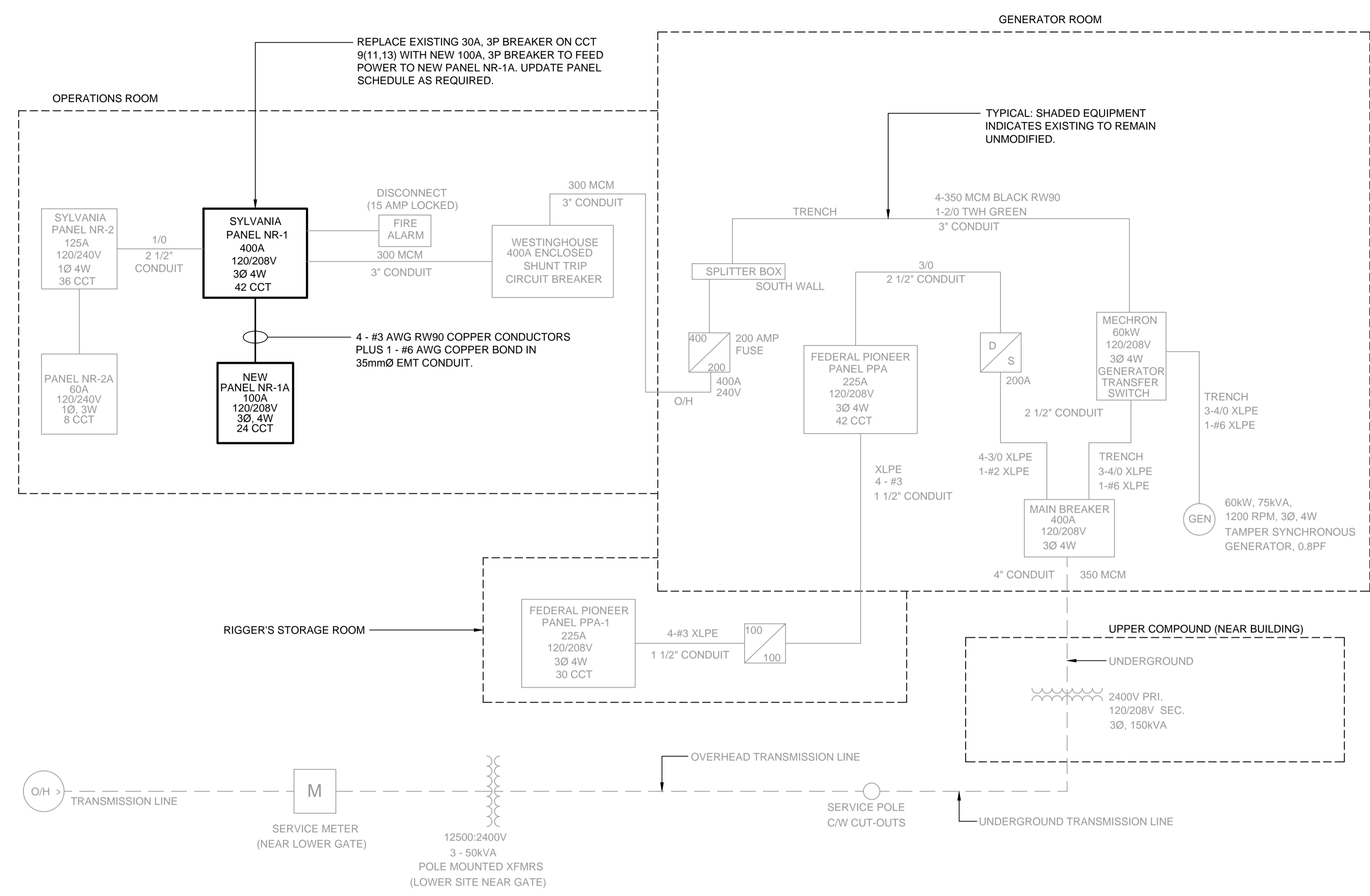
LIGHTING FIXTURE SCHEDULE, PANEL SCHEDULES AND RISER DIAGRAM

designed	JB/MR	compu
date	2018.01.09	
drawn	JB/MR	dessinf
date	2018.01.09	
approved	BR	approuv
date	2018.02.27	
Tender	AARON SLANEY	Submission
	PWGSC Project Manager	Administrateur de projets TPSGC
project number		no. du projet

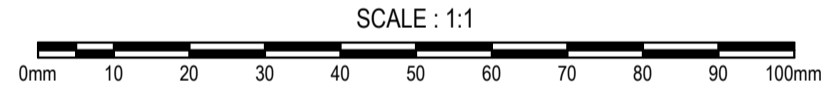
F6839-185502  
01N1007A034-E102

### LIGHTING FIXTURE SCHEDULE

TAG	TYPE A	TYPE B	TYPE C	TYPE D	TYPE E
<b>GENERAL DATA</b>	FIXTURE	EXISTING	LED	LED	LED
MANUFACTURER		LUMARK	LUMARK	RC LIGHTING	RC LIGHTING
CATALOG NO.	FIXTURE	XTOR4B-W	NFFLD-C40-E-UNV-66-S-CB	SEAL4-50N/D10 RCL	ARBAY2-90N RCL
SHIELDING		TEMPERED GLASS	TEMPERED GLASS	POLYCARBONATE	PMMA
<b>LAMP DATA</b>	NO. OF LAMPS PER FIXTURE	TO BE	1	1	1
LAMP WATTAGE			38	128	90
LAMP DESIGNATION	REMOVED	LED	LED	LED	LED
<b>MOUNTING DATA</b>	LOCATION		WALL	WALL	CEILING
METHOD			SURFACE	SURFACE	SURFACE
MOUNTING HEIGHT			SEE ARCH.	SEE ARCH.	SEE ARCH.
CEILING OR WALL FINISH			SEE ARCH.	SEE ARCH.	SEE ARCH.
<b>ELECTRICAL CHARACTERISTIC</b>	FIXTURE VOLTAGE		120V	120V	120V
BALLAST TYPE			LED DRIVER	LED DRIVER	LED DRIVER
TOTAL FIXTURE WATTAGE			38	128	90
<b>REMARKS</b>		SUPPLIED BY CCG. INSTALLED UNDER THIS CONTRACT.	SUPPLIED BY CCG. INSTALLED UNDER THIS CONTRACT.	SUPPLIED BY CCG. INSTALLED UNDER THIS CONTRACT.	SUPPLIED BY CCG. INSTALLED UNDER THIS CONTRACT.



EXISTING ELECTRICAL RISER DIAGRAM



#### EXISTING

LOAD DESCRIPTION	LOAD	WIRE	BKR	CIRCUIT			BKR	WIRE	LOAD	LOAD DESCRIPTION	PHASE LOAD						
				1	2	20					A	B	C				
EXISTING CIRCUIT		12	15	1	2	20				EXISTING CIRCUIT	-	-	-				
EXISTING CIRCUIT		10	A	5	6	30	12			EXISTING CIRCUIT	-	-	-				
EXISTING CIRCUIT		12	15	9	10	30	10			EXISTING CIRCUIT	-	-	-				
EXISTING CIRCUIT		12	15	11	12	2P	10			EXISTING CIRCUIT	-	-	-				
EXISTING CIRCUIT		12	15	13	14	20	12			EXISTING CIRCUIT	-	-	-				
EXISTING CIRCUIT		12	15	15	16	2P	12			EXISTING CIRCUIT	-	-	-				
EXISTING CIRCUIT		10	2P	17	18	20	12			EXISTING CIRCUIT	-	-	-				
EXISTING CIRCUIT		10	2P	19	20	2P	12			EXISTING CIRCUIT	-	-	-				
EXISTING CIRCUIT		10	2P	21	22	15	12			EXISTING CIRCUIT	-	-	-				
EXISTING CIRCUIT		10	2P	23	24	15	12			EXISTING CIRCUIT	-	-	-				
EXISTING CIRCUIT		100	A	25	26	35	10	4825		CONDENSING UNIT CU-2	-	-	-				
EXISTING CIRCUIT		3	3P	27	28	2P	10	250		EVAPORATOR UNITS EV-5, EV-6	-	-	-				
EXISTING CIRCUIT		12	2P	29	30	15	12			EXISTING CIRCUIT	-	-	-				
EXISTING CIRCUIT		12	2P	31	32	2P	12			EXISTING CIRCUIT	-	-	-				
EXISTING CIRCUIT		12	2P	33	34	20	12			EXISTING CIRCUIT	-	-	-				
EXISTING CIRCUIT		10	A	35	36	15	12			EXISTING CIRCUIT	-	-	-				
EXISTING CIRCUIT		10	3P	37	38	60	6			EXISTING CIRCUIT	-	-	-				
EXISTING CIRCUIT		10	3P	39	40	A	6			EXISTING CIRCUIT	-	-	-				
EXISTING CIRCUIT		10	3P	41	42	3P				EXISTING CIRCUIT	-	-	-				
COMMENTS: ● - GROUND FAULT BREAKER. + - INDICATES C/W LOCK-ON DEVICE.											CONNECTED LOAD	---	KW.	TOTAL WATTS	---	---	---
											ESTIMATED DEMAND	---	KW.	TOTAL AMPS	---	---	---

#### NEW

LOAD DESCRIPTION	LOAD	WIRE	BKR	CIRCUIT			BKR	WIRE	LOAD	LOAD DESCRIPTION	PHASE LOAD						
				1	2	15					A	B	C				
EXISTING CIRCUIT	2786		35	1	2	15	12	83		EVAPORATOR UNITS EV-1, EV-3	2869						
CONDENSING UNIT CU-1	2786	10	A	3	4	2P	12	83		EVAPORATOR UNITS EV-1, EV-3			2786				
EVAPORATOR UNITS EV-2, EV-4	104	12	15	7	8						104						
EVAPORATOR UNITS EV-2, EV-4	104	12	2P	9	10						104						
SPACE				11	12					SPACE							
SPACE				13	14					SPACE							
SPACE				15	16					SPACE							
SPACE				17	18					SPACE							
SPACE				19	20					SPACE							
SPACE				21	22					SPACE							
SPACE				23	24					SPACE							
COMMENTS: ● - GROUND FAULT BREAKER. + - INDICATES C/W LOCK-ON DEVICE.											CONNECTED LOAD	8.7	KW.	TOTAL WATTS	2973	2973	2786
											ESTIMATED DEMAND	8.7	KW.	TOTAL AMPS	24.8	24.8	23.2

