

Fisheries Pêches
and Oceans et Océans
Real Property Services Immobiliers

GREENING OF GOVERNMENT OPERATIONS
SOUTH BASE BOUY MAINTENANCE FACILITY
ST. JOHN'S
NEWFOUNDLAND AND LABRADOR

PROJECT NO. F6879-189205

Canada

EQUIPMENT SCHEDULE

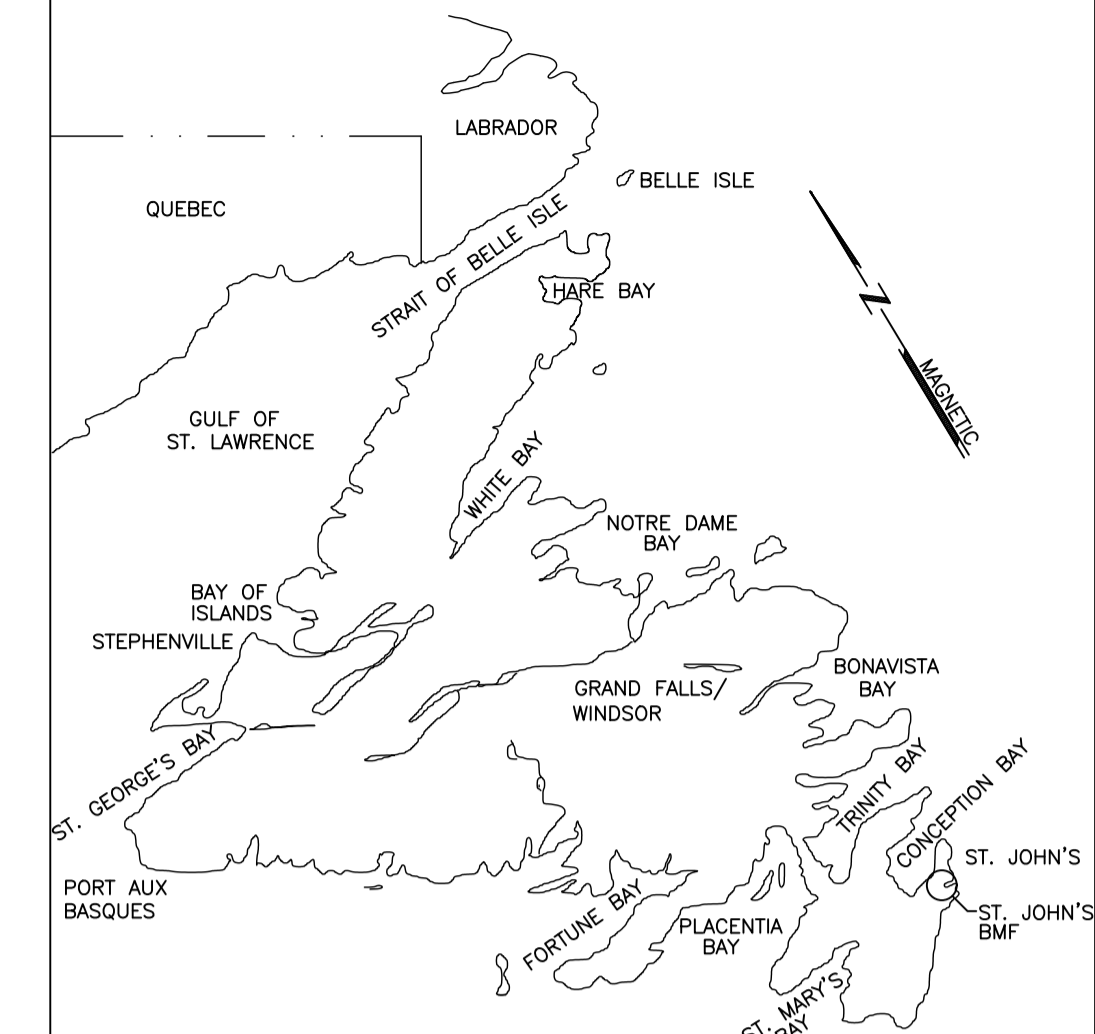
DF1 - DESTRATIFICATION CEILING FAN
 BIGASS FAN MODEL POWERFOIL X3.0
 PFX3-14. 4267mm DIA. FAN, 118 RPM
 MAX. SPEED, 1.1 KW MOTOR, -/-/60,
 - AMP MOCP. 115 KG WEIGHT. C/W
 SMART SENSE TECHNOLOGY CONTROLLER,
 STANDARD MOUNTING OPTION.

DF2 - DESTRATIFICATION CEILING FAN
 BIGASS FAN MODEL POWERFOIL X3.0
 PFX3-14. 4267mm DIA. FAN, 118 RPM
 MAX. SPEED, 1.1 KW MOTOR, -/-/60,
 - AMP MOCP. 115 KG WEIGHT.
 C/W SMART SENSE TECHNOLOGY
 CONTROLLER, STANDARD MOUNTING
 OPTION.

CLEARANCES:
 DISTANCE FROM CEILING: 1.5m
 DISTANCE FROM FLOOR: 3m
 DISTANCE FROM OBSTRUCTION AND
 BUILDING STRUCTURE: 0.61m

1. FAN MUST BE GEAR-DRIVEN
2. FAN TO USE A BALDOR MOTOR
3. THE FAN GEARBOX SHALL BE A NITROSEAL DRIVE, AND SHALL INCLUDE A HIGH-EFFICIENCY, HERMETICALLY SEALED, NITROGEN-FILLED, OFFSET HELICAL GEAR REDUCER WITH 11 ARC MINUTES OF BACKLASH OR LESS OVER THE LIFE OF THE UNIT
4. FAN TO BE EQUIPPED WITH A DELTA VFD
5. FAN TO BE BACKED WITH A 15 YEAR NON-PRORATED WARRANTY
6. FAN TO INCLUDE 8 AIRFOILS, EACH EQUIPPED WITH AIRFENCE TECHNOLOGY TO OPTIMIZE PERFORMANCE

7. FAN EQUIPPED WITH C-FACE MOTOR ADAPTER FOR EASY ACCESS (IN THE CASE OF AN ISSUE OR WARRANTY CLAIM, MOTOR CAN BE REMOVED/REPLACED WITHOUT HAVING TO TAKE DOWN THE FAN)
8. SMART SENSE AUTOMATED CONTROL SYSTEM (WITH TEMPERATURE SENSORS) ARE TO BE INCLUDED AS AN OPTIONAL CONTROL SYSTEM WITH EACH FAN, PROVIDING THE OPPORTUNITY TO OPTIMIZE PERFORMANCE FOR SUMMER AND WINTER OPERATION.



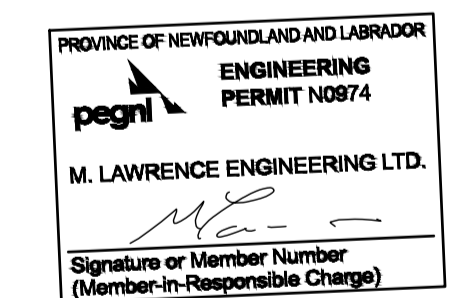
KEY LOCATION PLAN

M. LAWRENCE ENGINEERING LTD

Consulting Engineers
HALIFAX NS
 902-222-5364
 WWW.MLENGINEERING.CA

CONSULTANT

STAMP



1	ISSUED FOR TENDER	18/04/09	M.L.	M.L.
no.	revision	date	by	approved
no.	revision	date	par	approve

Project - projet

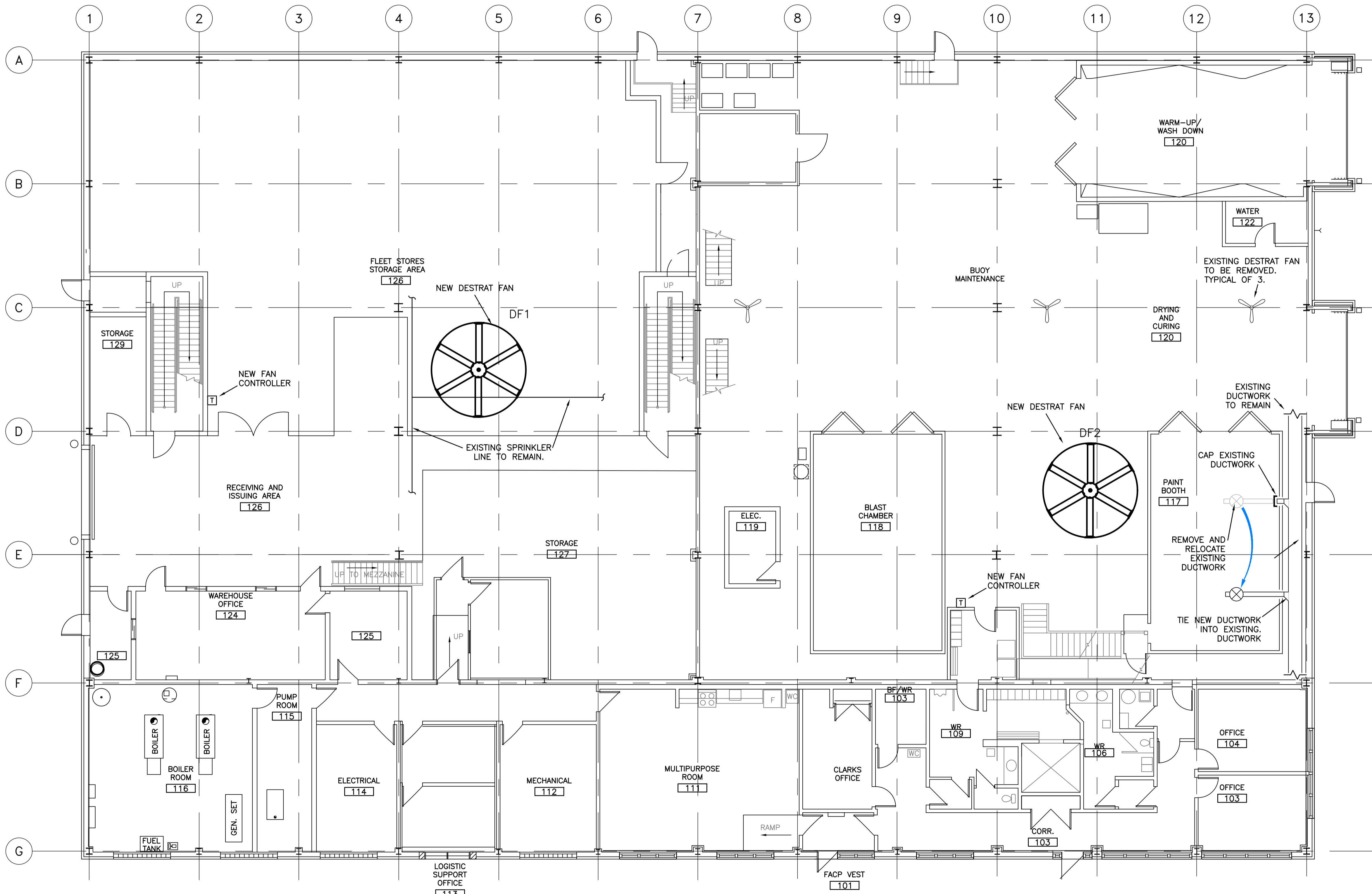
ST. JOHN'S BMF - GREENING OF GOVERNMENT OPERATIONS

Drawing - dessin

LEVEL 1 - NEW MECHANICAL LAYOUT

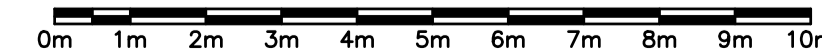
drawn - dessiné	H. OSBORNE	designed - dessiné par	M. LAWRENCE
date - date	FEBRUARY 2018	checked - vérifié	M. LAWRENCE
scale - échelle	AS SHOWN	approved for tender - approuvé pour l'offre	

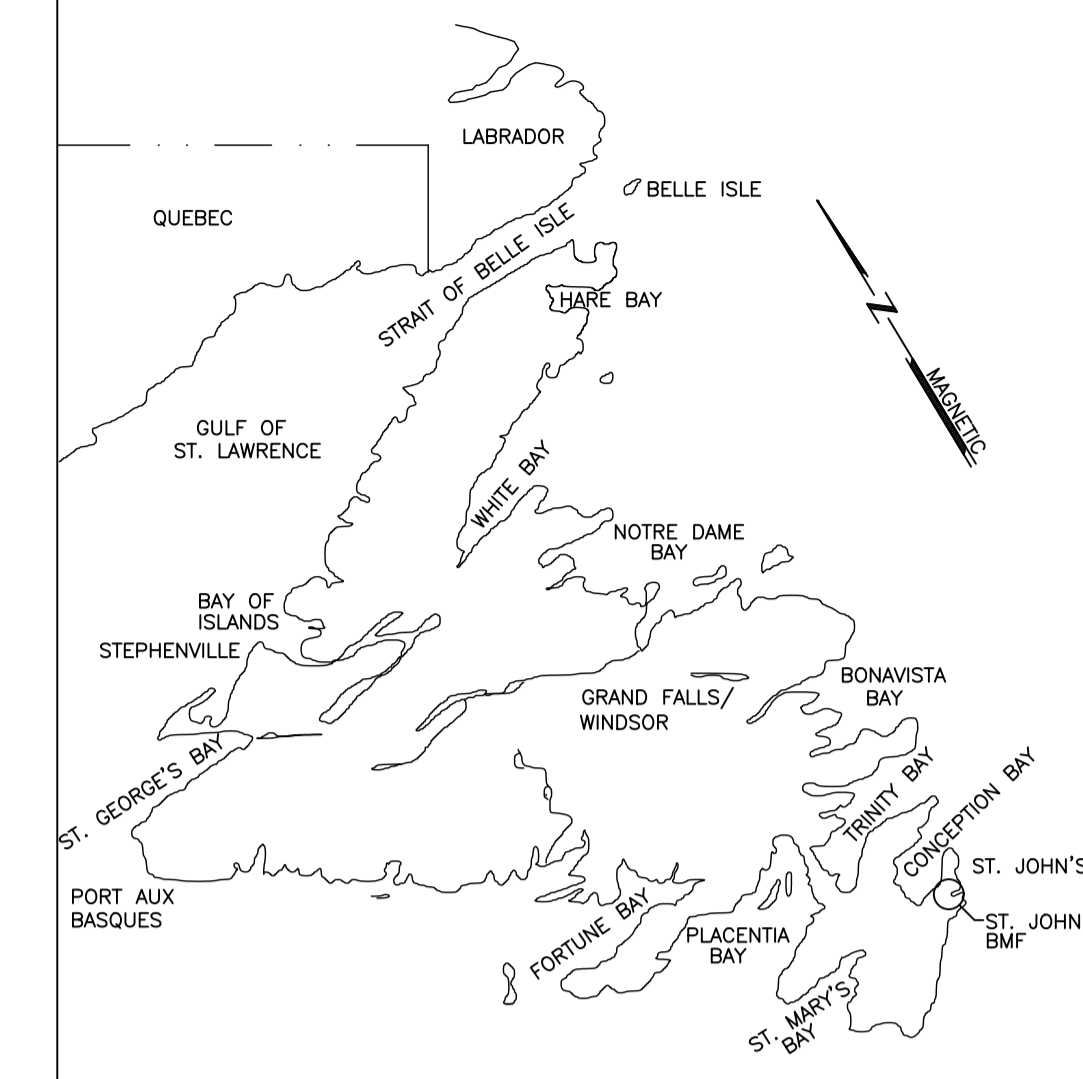
project no. - projet no.	drawing no. - no du dessin	sheet - feuille
F6879-189205	01N1001A487	ME-2



VENTILATION - LEVEL 1

SCALE : 1:100



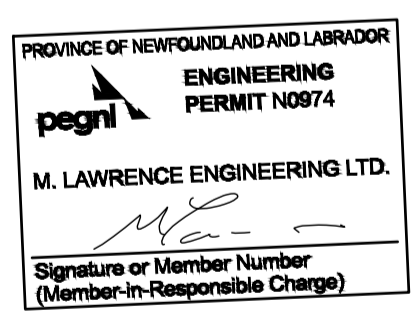


KEY LOCATION PLAN

M. LAWRENCE ENGINEERING LTD
Consulting Engineers
HALIFAX NS
902-222-5364
WWW.MLENGINEERING.CA

CONSULTANT

STAMP

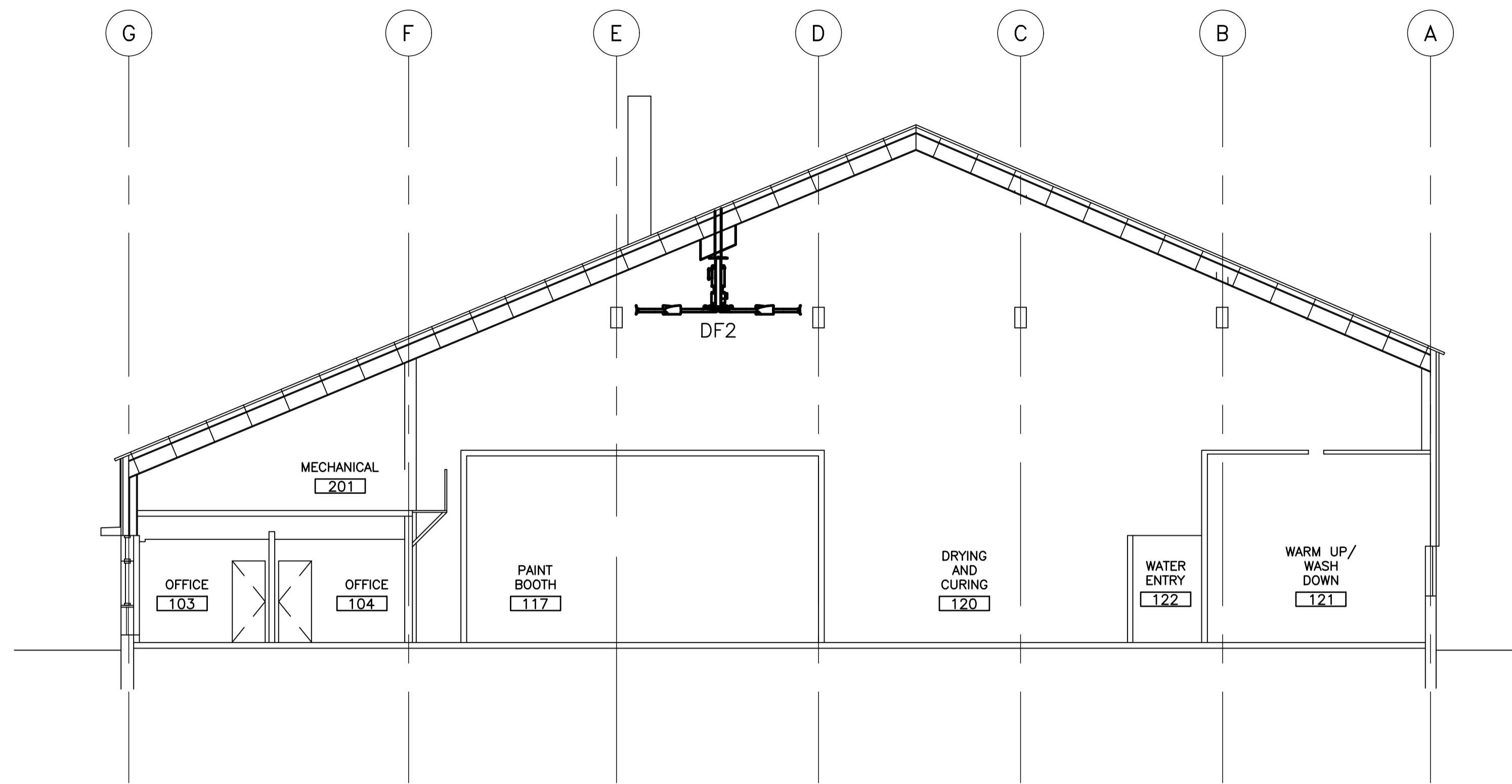


1	ISSUED FOR TENDER	18/04/09	M.L.	M.L.
no.	revision	date	by	approved
no.	revision	date	par	approuvé

Project - projet
ST. JOHN'S BMF - GREENING OF GOVERNMENT OPERATIONS

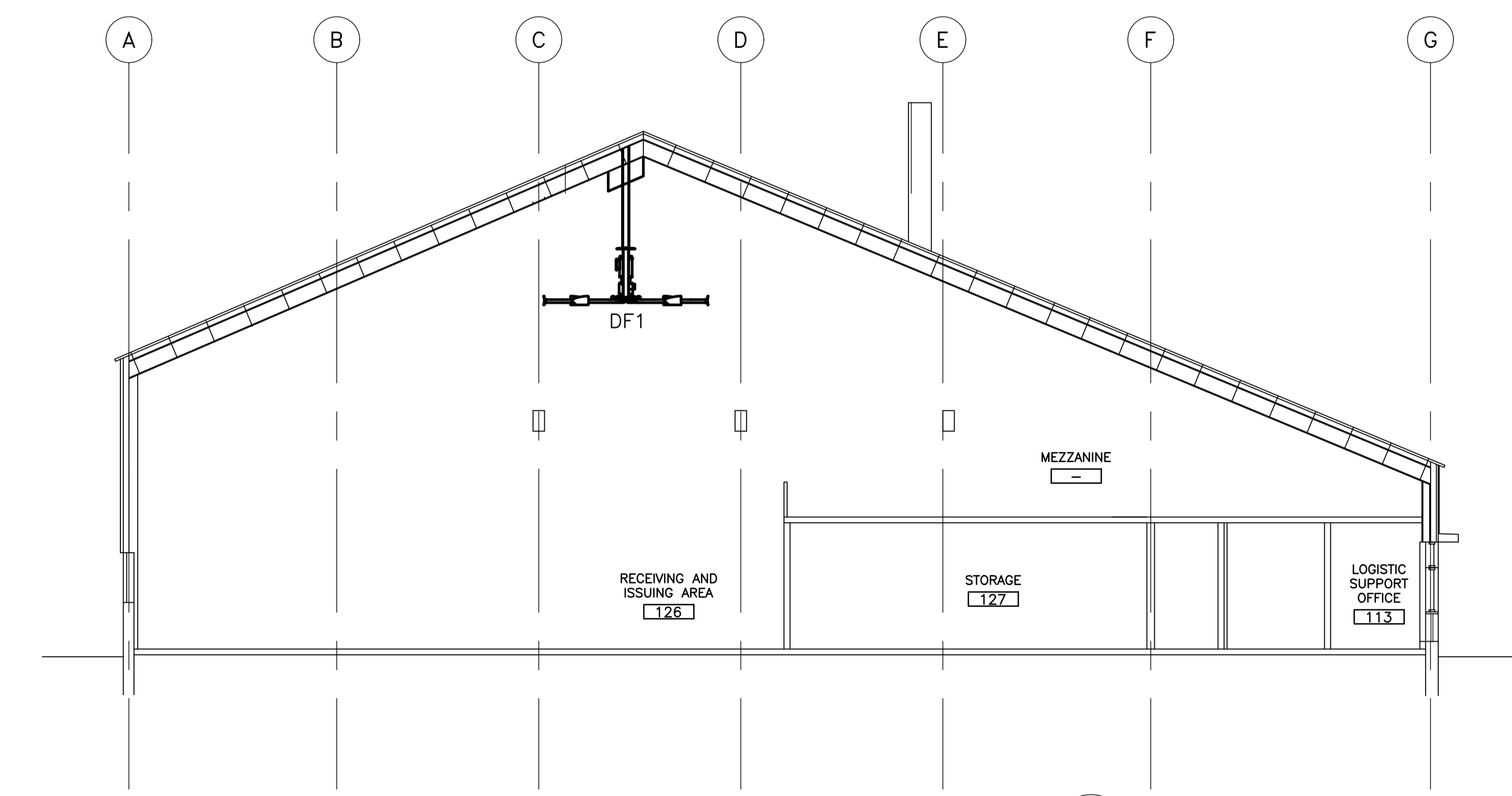
Drawing - dessin
NEW MECHANICAL CROSS SECTIONS

drawn - dessiné	H. OSBORNE	designed - dessiné par	M. LAWRENCE
date - date	FEBRUARY 2018	checked - vérifié	M. LAWRENCE
scale - échelle	AS SHOWN	approved for tender - approuvé pour l'offre	
project no. - projet no.	F6879-189205	drawing no. - no du dessin	01N1001A487
		sheet - feuille	ME-3



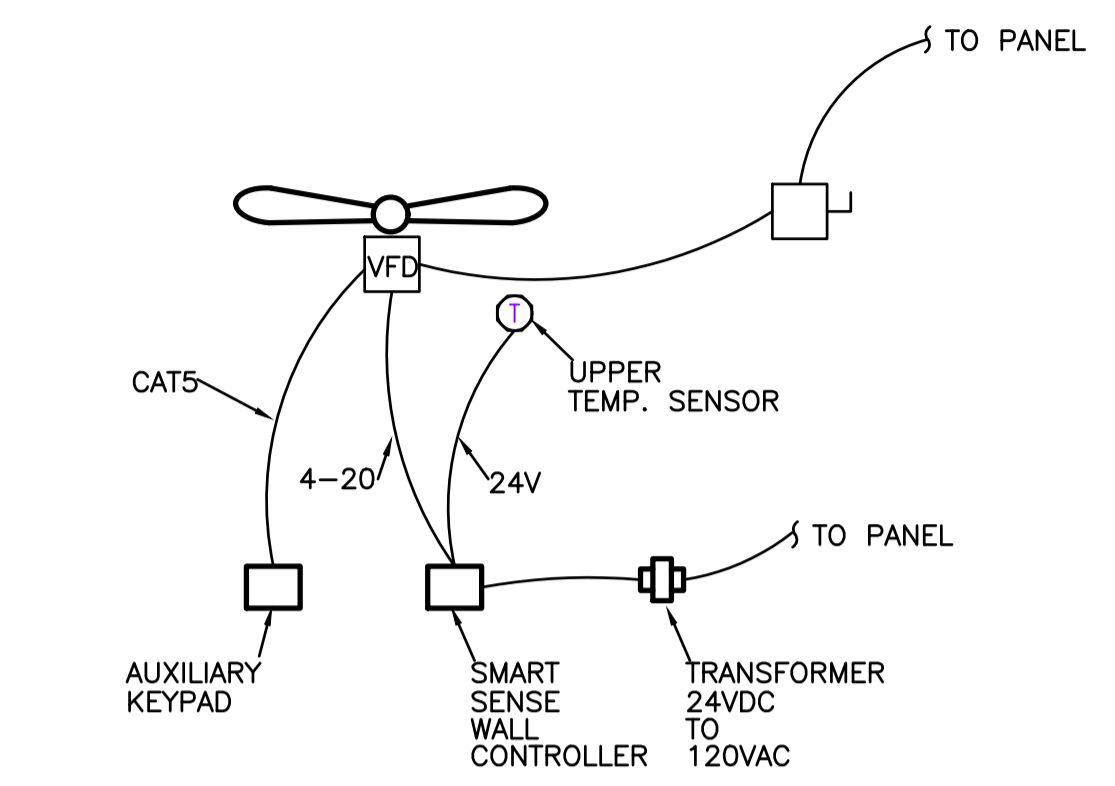
DRYING AND CURING CROSS SECTION

SCALE : 1:100



RECEIVING AND ISSUING CROSS SECTION

SCALE : 1:100



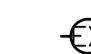





FAN WIRING DIAGRAM

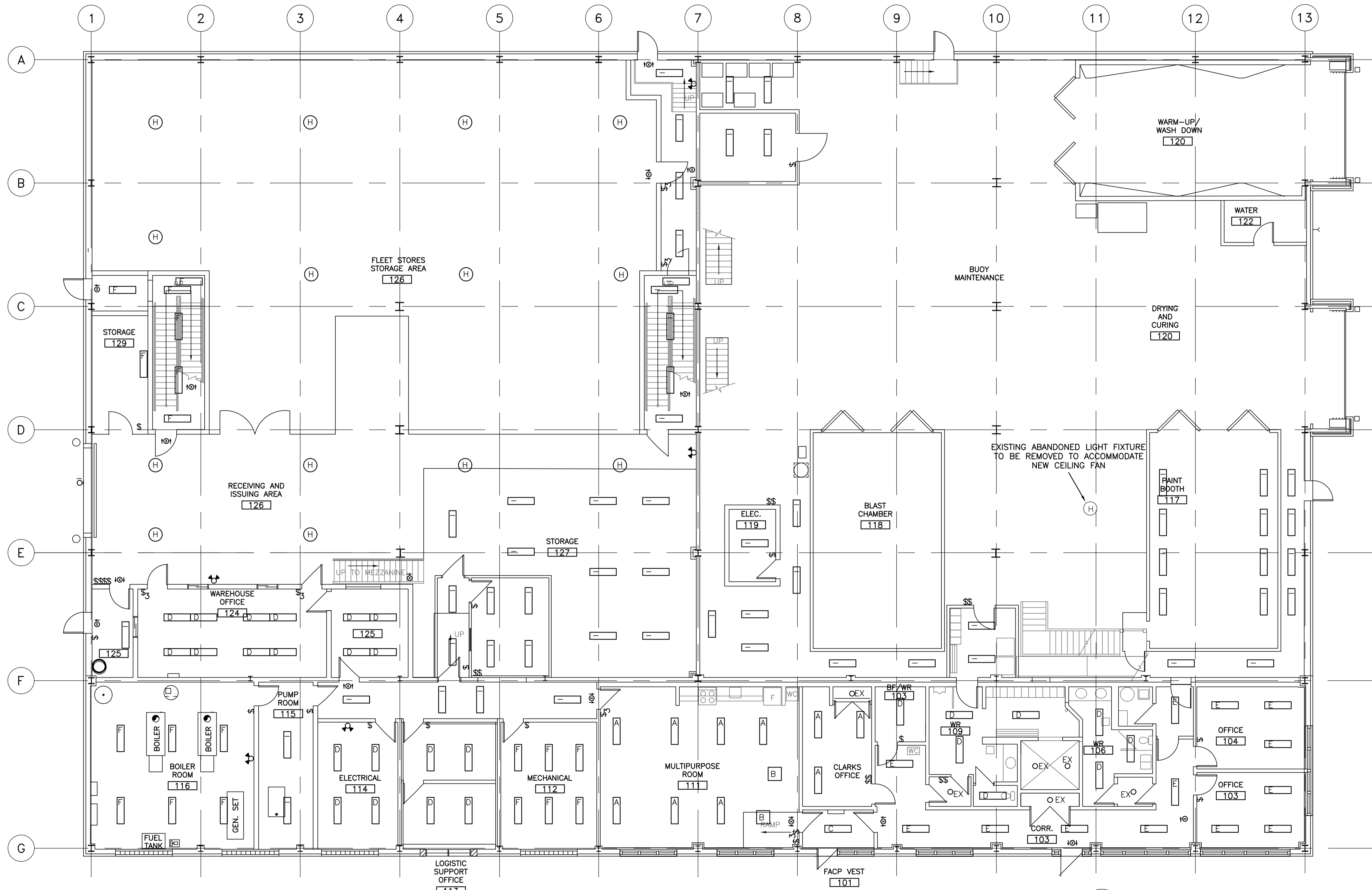
3
ME3

ELECTRICAL NOTES

- FLEET STORE STORAGE AREA 126
- SUPPLY AND INSTALL NEW 30 AMP, 2 POLE BREAKER IN CIRCUIT LOCATION 14,16 AND A 15 AMP, 1 POLE BREAKER IN CIRCUIT LOCATION 18 IN PANEL 'LC' WITHIN ELECTRICAL ROOM 114.
 - SUPPLY AND INSTALL FEEDER (2#10AWG R90 + 1#12AWG R90 BOND IN 19mm EMT) FROM THE 30 AMP, 2 POLE BREAKER TO THE DESTRAT FAN IN ROOM 126.
 - PROVIDE 30 AMP, 3 POLE NON-FUSED DISCONNECT SWITCH, AS DETAILED IN FAN WIRING DRAWING.
 - SUPPLY AND INSTALL FEEDER (2#12AWG R90 + 1#12AWG R90 BOND IN 19mm EMT) FROM THE 15 AMP, 1 POLE BREAKER TO THE 120VAC/24VDC TRANSFORMER LOCATED NEAR THE DESTRAT FAN CONTROLLER
 - SUPPLY AND INSTALL ALL CONTROL DRAWING AND AS PER MANUFACTURER'S RECOMMENDATIONS.
 - CONTRACTOR TO PROVIDE UPDATED, TYPE-WRITTEN PANEL SCHEDULE UPON COMPLETION.
 - PROVIDE FIRE STOPPING AT ALL LOCATIONS WHERE CONDUIT PENETRATE WALLS, FLOORS AND CEILINGS.
 - SUPPLY AND INSTALL LAMICOID PLATE ON DISCONNECT SWITCH AS FOLLOWS: PANEL LC -CCT 14,16.
- BUOY MAINTENANCE/DRYING AND CURING AREA 120
- SUPPLY AND INSTALL NEW 30 AMP, 2 POLE BREAKER IN CIRCUIT LOCATION 22,24, AND A 15 AMP, 1 POLE BREAKER IN CIRCUIT LOCATION 26 IN PANEL 'LA' WITHIN ELECTRICAL ROOM 119.
 - SUPPLY AND INSTALL FEEDER (2#10AWG R 90 + 1#12AWG R90 BOND IN 19mm EMT) FROM THE 30 AMP, 2 POLE BREAKER IN THE DESTRAT FAN IN ROOM 120.
 - PROVIDE 30 AMP, 3 POLE NON-FUSED DISCONNECT SWITCH, AS DETAILED IN FAN WIRING DRAWINGS.
 - SUPPLY AND INSTALL FEEDER (2#12AWG R90 + 2#12AWG R90 BOND IN 19mm EMT) FROM THE 15 AMP, 1 POLE BREAKER TO THE 120VAC/24VDC TRANSFORMER LOCATED NEAR THE DESTRAT FAN CONTROLLER.
 - SUPPLY AND INSTALL ALL CONTROL CABLING AS DETAILED IN FAN WIRING DRAWINGS AND AS PER MANUFACTURER RECOMMENDATIONS.
 - CONTRACTOR TO PROVIDE UPDATED, TYPE-WRITTEN PANEL SCHEDULE UPON COMPLETION.
 - PROVIDE FIRE STOPPING AT ALL LOCATIONS WHERE CONDUITS PENETRATE WALL, FLOORS AND CEILINGS.
 - SUPPLY AND INSTALL LAMICOID PLATE ON DISCONNECT SWITCH AS FOLLOWS: PANEL LA - CCT 22,24.

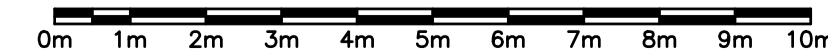
LIGHTING LEGEND

-  EXISTING LIGHTING FIXTURE, WALL MOUNTED.
-  EXISTING FLUORESCENT LIGHTING FIXTURE TO BE CHANGED TO LED. LETTER DENOTES TYPE. SEE LIGHTING FIXTURE SCHEDULE & SPECIFICATIONS FOR DESCRIPTION.
-  EXISTING SINGLE POLE TOGGLE SWITCH.
-  EXISTING THREE WAY SWITCH
-  EXIT SIGN.
-  EMERGENCY LIGHTING BATTERY UNIT C/W TWO HEADS.

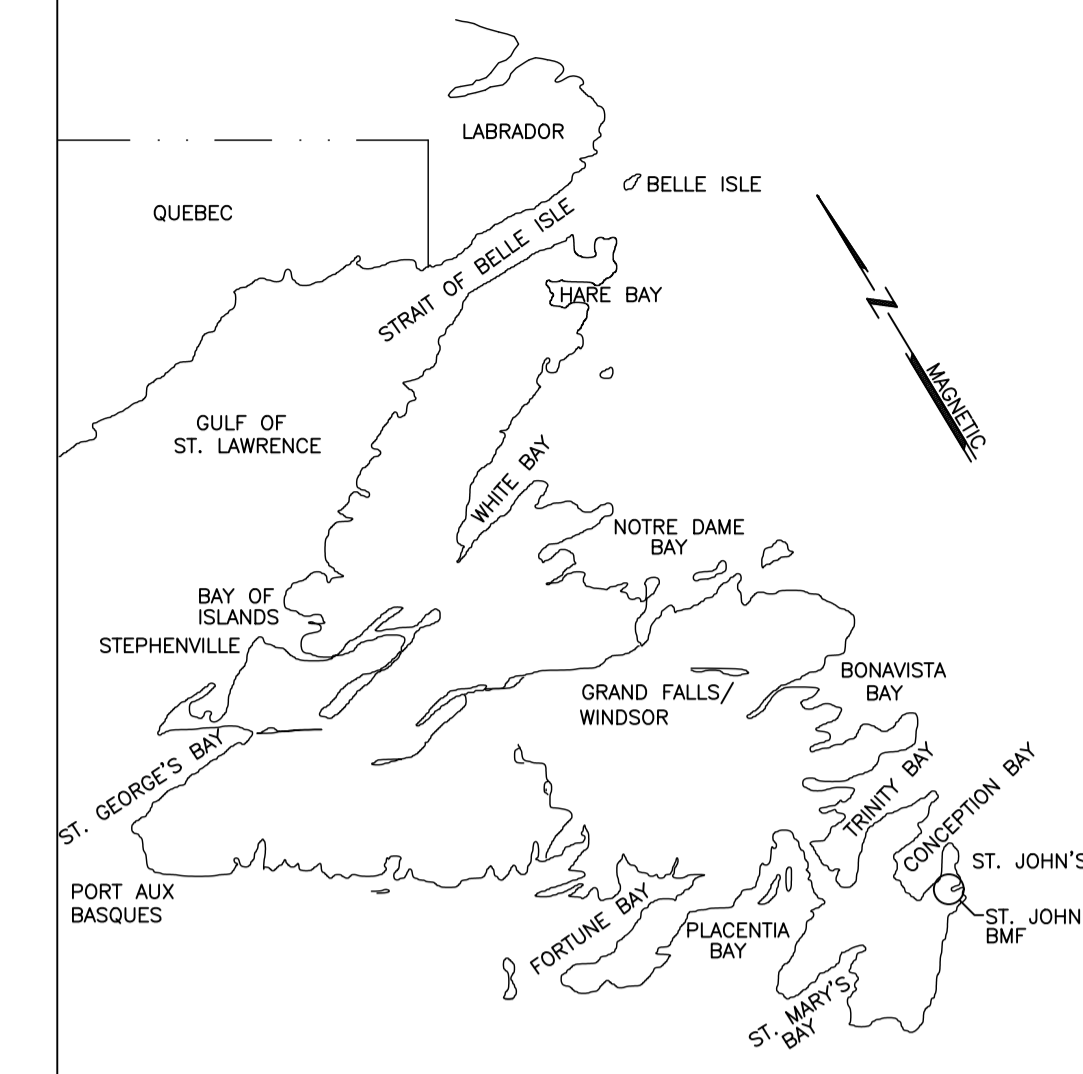


LIGHTING - LEVEL 1

SCALE : 1:100



1
ME4



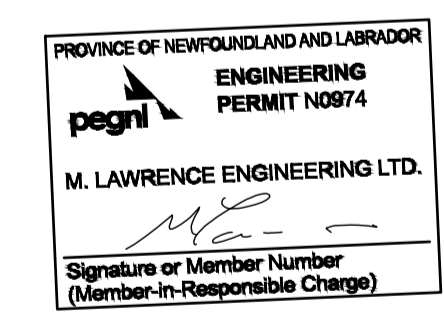
KEY LOCATION PLAN

M. LAWRENCE ENGINEERING LTD

Consulting Engineers
HALIFAX NS
 902-222-5364
 WWW.MLENGINEERING.CA

CONSULTANT

STAMP



1	ISSUED FOR TENDER	18/04/09	M.L.	M.L.
no.	revision	date	by	approved
	revision	date	par	approve

Project - projet
ST. JOHN'S BMF - GREENING OF GOVERNMENT OPERATIONS

Drawing - dessin
LEVEL 1 - NEW LIGHTING LAYOUT

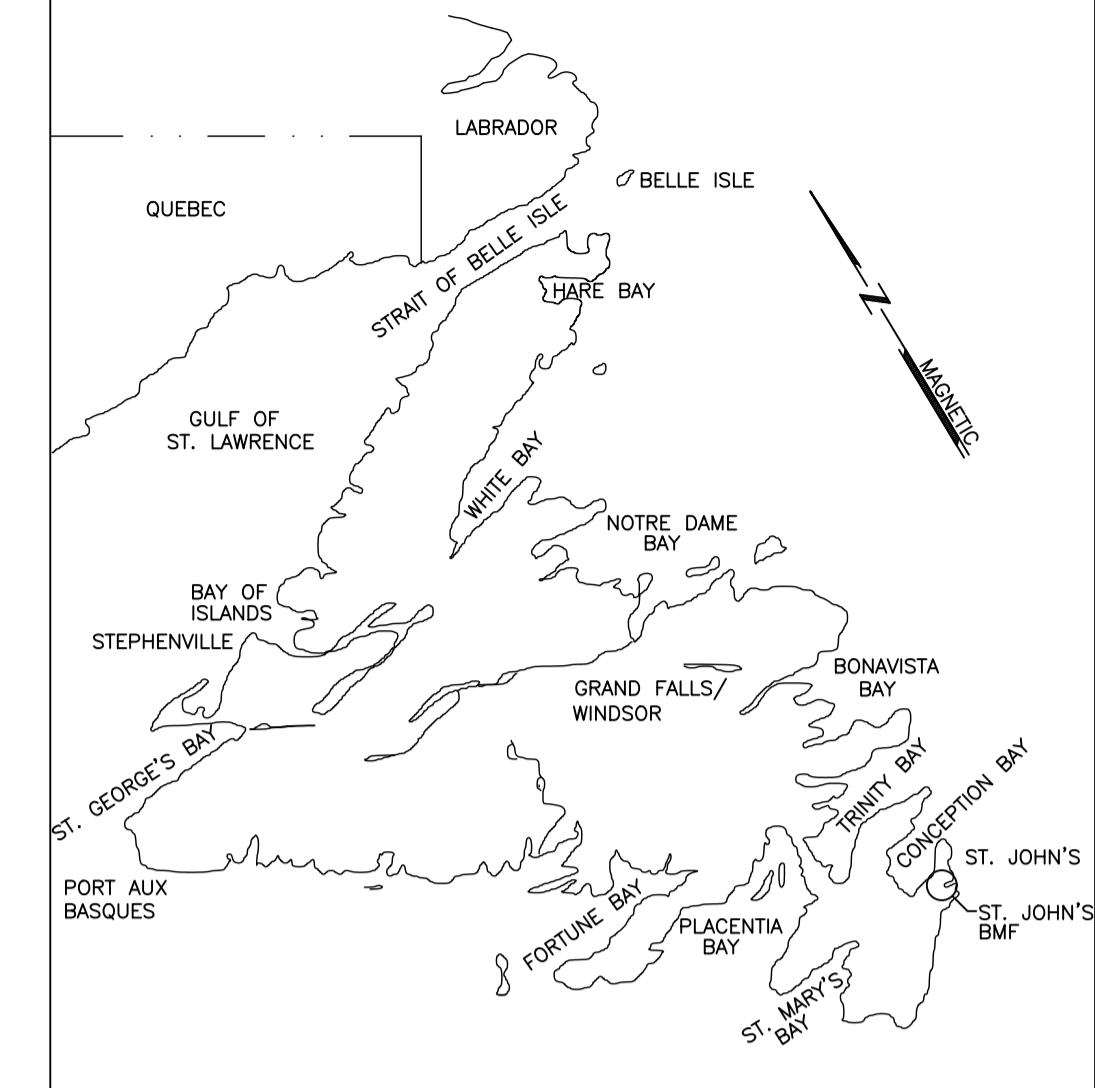
drawn - dessiné	H. OSBORNE	designed - dessiné par	M. LAWRENCE
date - date	FEBRUARY 2018	checked - vérifié	M. LAWRENCE
scale - échelle	AS SHOWN	approved for tender - approuvé pour l'offre	
project no. - projet no.	F6879-189205	drawing no. - no du dessin	01N1001A487
		sheet - feuille	ME-4

LIGHT FIXTURE SCHEDULE

SYMBOL	TYPE	EXISTING FIXTURE DESCRIPTION	NEW FIXTURE DESCRIPTION	MANUFACTURER	CAT. NO.	COLOR TEMPERATURE (K)	OUTPUT /LAMP REQUIREMENT	WATTAGE	VOLTAGE
	A	2'x4' FLUORESCENT T12 TROFFER, 2-LAMP, FLUSH MOUNTED	2'x4' LED TROFFER c/w ACRYLIC LENS, FLUSH MOUNTED	LITHONIA	2GTL-4-40L-SLD-LP835	3500	LED DRIVER/ 4309 LUM	31W	120V
	B	2'x2' FLUORESCENT T8 U-BULB TROFFER, 2-LAMP, FLUSH MOUNTED	2'x2' LED TROFFER c/w ACRYLIC LENS, FLUSH MOUNTED	LITHONIA	2GTL-2-40L-SLD-LP835	3500	LED DRIVER/ 4038 LUM	34W	120V
	C	1'x4' FLUORESCENT T12 TROFFER, 2-LAMP, FLUSH MOUNTED	1'x4' LED TROFFER c/w ACRYLIC LENS, FLUSH MOUNTED	LITHONIA	GTL-4-40L-SLD-LP835	3500	LED DRIVER/ 3751 LUM	40W	120V
	D	1'x4' FLUORESCENT T12 TROFFER, 2-LAMP, SURFACE MOUNTED	4' LED WRAPAROUND FIXTURE c/w PRISMATIC DIFFUSER, SURFACE MOUNTED	LITHONIA	LBL4-4000LM-80CRI-35K-ZT-MVOLT	3500	LED DRIVER/ 4188 LUM	32W	120V
	E	1'x4' FLUORESCENT T12 TROFFER, 2-LAMP, SURFACE MOUNTED	1'x4' LED TROFFER c/w ACRYLIC LENS, FLUSH MOUNTED	LITHONIA	GTL-4-40L-SLD-LP835	3500	LED DRIVER/ 3751 LUM	40W	120V
	F	1'x4' FLUORESCENT T12 LOW-BAY, 2-LAMP, SURFACE MOUNTED	4' LED STRIP c/w WIREGUARD, SURFACE MOUNTED	LITHONIA	ZL1D-L48-SMR-5000LM-FST-MVOLT-35K c/w WG248	3500	LED DRIVER/ 5456 LUM	41W	120V
	G	1'x4' FLUORESCENT T8 TROFFER, 2-LAMP, SURFACE MOUNTED	4' LED WRAPAROUND FIXTURE c/w PRISMATIC DIFFUSER, SURFACE MOUNTED	LITHONIA	LBL4-4000LM-80CRI-35K-ZT-MVOLT	3500	LED DRIVER/ 4188 LUM	32W	120V
	H	METAL HALIDE HIGH-BAY, 400W	LED HIGH-BAY FIXTURE c/w CLEAR DIFFUSER	LITHONIA	JCBL-24000LM-ACCR-MVOLT-GZ10-35K-80CRI	3500	LED DRIVER/ 18065 LUM	188W	120V
	I	1'x4' FLUORESCENT T8 LOW-BAY, 2-LAMP, SURFACE MOUNTED	4' LED STRIP c/w WIREGUARD, SURFACE MOUNTED	LITHONIA	ZL1D-L48-SMR-5000LM-FST-MVOLT-35K c/w WG248	3500	LED DRIVER/ 5456 LUM	41W	120V
	X	EXIT SIGN	LED EXIT SIGN	LUMACELL	LA1WU				120V

LIGHTING LEGEND

- EXISTING LIGHTING FIXTURE, WALL MOUNTED.
- EXISTING FLUORESCENT LIGHTING FIXTURE TO BE CHANGED TO LED. LETTER DENOTES TYPE. SEE LIGHTING FIXTURE SCHEDULE & SPECIFICATIONS FOR DESCRIPTION.
- EXISTING SINGLE POLE TOGGLE SWITCH.
- EXISTING THREE WAY SWITCH
- EXIT SIGN.
- EMERGENCY LIGHTING BATTERY UNIT C/W TWO HEADS.

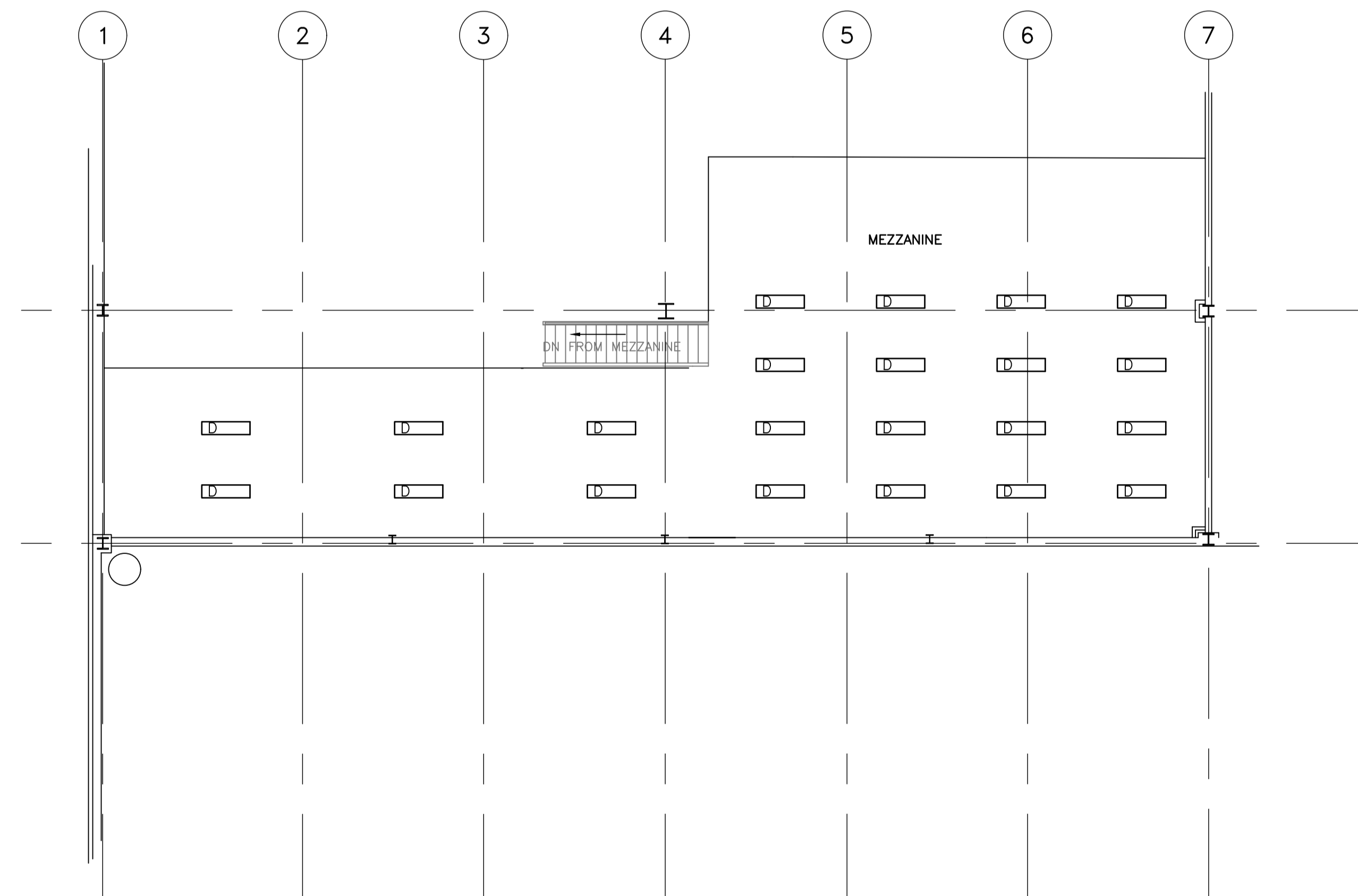
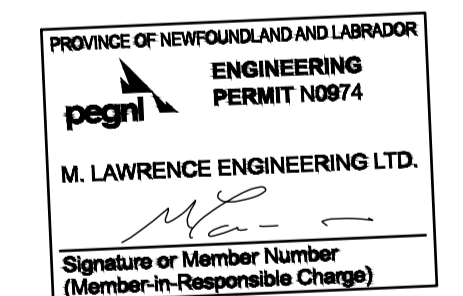


KEY LOCATION PLAN

M. LAWRENCE ENGINEERING LTD
Consulting Engineers
HALIFAX NS
902-222-5364
WWW.MLENGINEERING.CA

CONSULTANT

STAMP



LIGHTING - MEZZANINE LEVEL

SCALE : 1:100



1
ME5

1	ISSUED FOR TENDER	18/04/09	M.L.	M.L.
no.	revision	date	by	approved
no.	revision	date	par	approve

Project - projet

ST. JOHN'S BMF - GREENING OF GOVERNMENT OPERATIONS

Drawing - dessin

MEZZANINE LEVEL - NEW LIGHTING LAYOUT

drawn - dessiné	H. OSBORNE	designed - dessiné par	M. LAWRENCE
date - date	FEBRUARY 2018	checked - vérifié	M. LAWRENCE
scale - échelle	AS SHOWN	approved for tender - approuvé pour l'offre	
project no. - projet no.	F6879-189205	drawing no. - no du dessin	01N1001A487
		sheet - feuille	ME-5